

CONTINUING OUR OCCASIONAL SERIES OF BAD PUNS AND CLICHES, WE PRESENT

# MAY you find what you're looking for in

## WHATS ON

### Rock, etc:

Sussex University, Mandela Hall

- 18th THE SKIDS.
- 24th THE PIRANHAS, THE MOLESTERS.
- 25th WAYNE COUNTY AND THE ELECTRIC CHAIRS.



THE SKIDS  
Hanbury Arms, Kempton.

- 4th. THE PARROTS, DEVILS DYKES.
- 11th. WOODY & THE SPLINTERS PARROTS
- 18th. LILLETTES & WOODY & THE SPLINTERS.

The co-op organizing gigs at Hanbury want to apologize for dates missed last month.  
Richmond, Grand Parade.

- Tues; Sun. ROCK'n' ROLL
- Mon. Divorced & Single Club.
- Fri. Over 30's Club.
- Every Tues. Various rock bands, Ring 603974 for details.

### Northern

Fri, Sat, Sun, WOODBINE. Conference Centre.

- 19th BRIGHTON TATTOO.
- 27th, 28th, 29th, THE HARLEM GLOBETROTTERS.
- 31st THE TUBES.

Springfield, Nr. London Rd Station.

- Fridays
- 4th I CAN'T SEE MY LITTLE WILLY.
  - 11th ANDREW FRANK, MIKE MANN.
  - 18th BRIAN BLANCHARD.
  - 25th COME ALL YE.

- Sunday
- 6th STEVE TURNER.
  - 13th MARTIN BRADLEY, WARWICK DOWN.
  - 20th ALAN TAYLOR.
  - 27th COME ALL YE.

Alhambra, seafront

- BETTER LOOKING.
- FAN CLUB.
- VANDELS.
- SHARAFIA.
- TINSELS.
- ACCENT.
- BETTER LOOKING.
- FAN CLUB.
- LITTLE JIMMIES.
- TEN MEN.
- SPLITTING IMAGE.
- THE PIRANHAS.

Every Sunday-The Piranhas ? Ring

S.W.P. Public Meetings

- Wed. 9th May. 8.00pm.  
After the Election...  
What Now For Socialists?  
Speaker Tony Cliff,  
central committee, s.w.p.  
editor of Socialist Worker  
Resource Centre, North Rd.

THE first issue of Rock Against Sexism's dRAsTic measures is now out price 5p with a long article 'Love Sex - Hate Sexism' by Lucy Toothpaste. Among RAS's aims is to fight sexism in music and to use music to fight sexism at large.

More info from: RAS, 121 Grandison Road, London SW11. Badges (as illustrated) 15p plus 10p postage.



VOICE COLLECTIVE MEETINGS  
8.00pm EVERY SUNDAY.  
7 VICTORIA ROAD.  
ALL WELCOME.

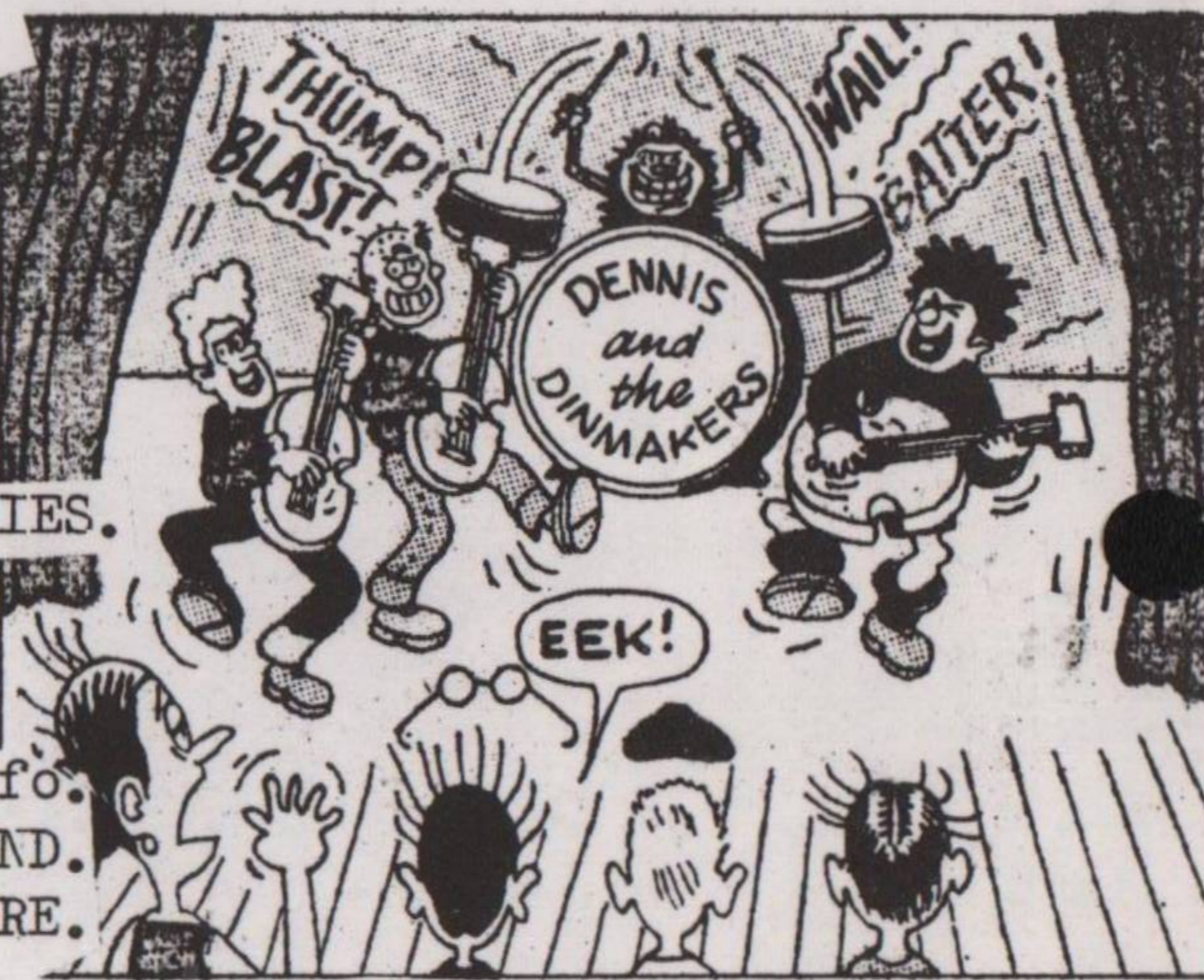
### Classical, etc.

The Dome

- 5th LONDON SYMPHONY ORC.
- 6th " " " " "
- 7th JAZZ-  
2.30-STAN TRACY, GEORGE FAME & THE BLUE FLAMES, ART BLAKEY & JAZZ MESSENGER.
- 7.30-SALUTE TO SACHMO. MARYLN MONTGOMERY  
GEORGE MELLY,  
ALEX WEALTH, GEORGE SMITH  
GEORGE CHISHOLM.
- 8th STRING QUARTET
- 11th LONTANO ENSEMBLE.
- 12th JOHN WILLIAMS.
- 13th B.B.C. ORC.
- 16th ENGLISH CHAMBER ORC.
- 19th BRIGHTON YOUTH ORC. (afternoon)  
PHILHARMONIC ORC. (evening)
- 23rd RENAISSANCE.
- 30th, 31st, 1st, 2nd, CRESCENT OPERATIC SOCIETY.

NEED A ROOM TO MEET IN?  
Cost: 80p per evening. Write c/o  
7 Victoria Road for details.

- ACTION MEN.
- EXECUTIVES.
- FAN CLUB.
- ACCENT.
- SHARAFIA.
- FAN CLUB.
- CHICANE.
- TEN MEN.
- LITTLE JIMMIES.
- EXECUTIVES.
- TEAM BEAT.
- TINSELS.
- Ring for info.
- DIRTY WEEKEND.
- SECOND NATURE.
- ACCENTS.

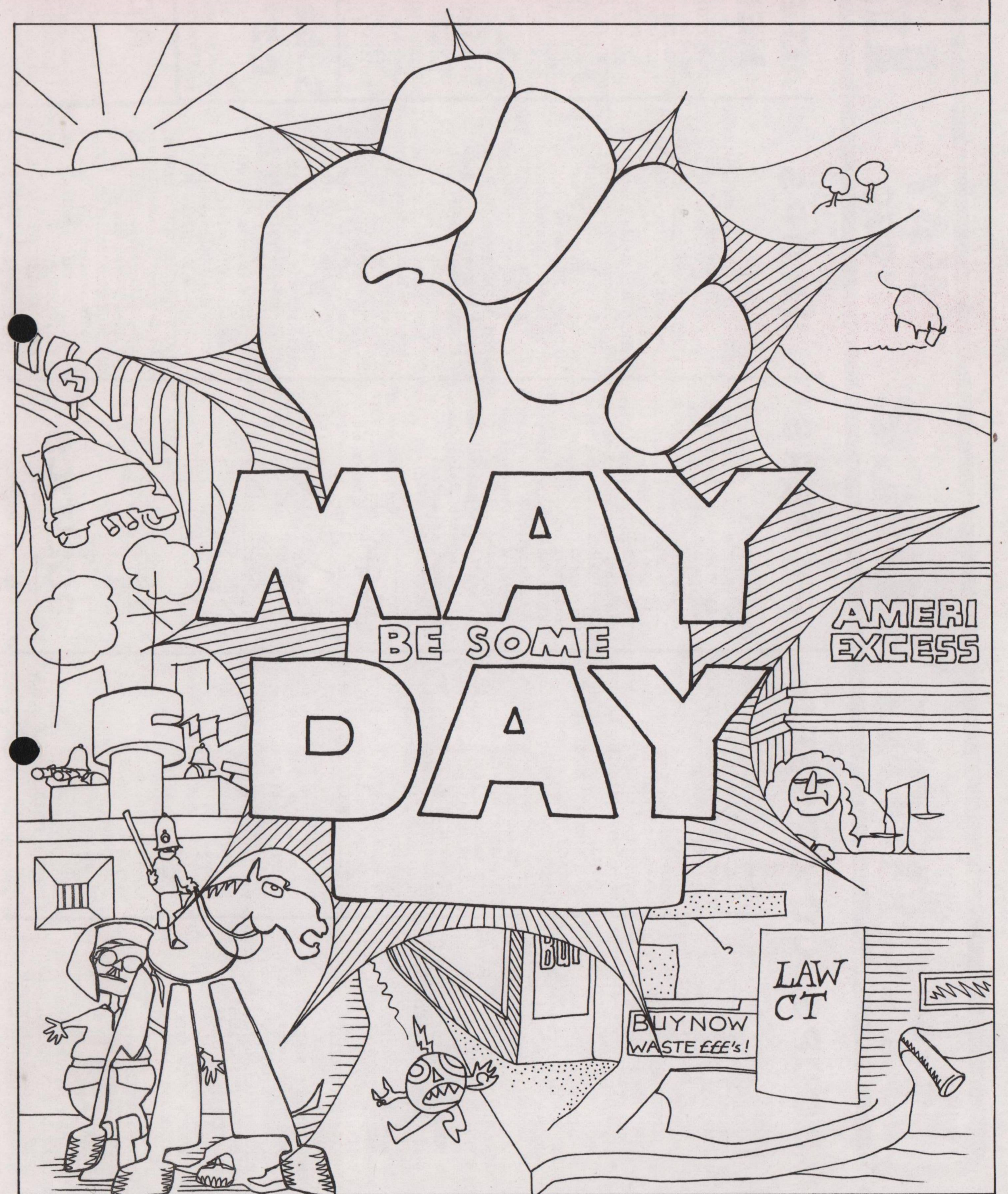


### BIRTH CENTRE

- BIRTH CENTRE
- Birth centre jumble sale Westhill C.A.'s All Saints Hall 5th May, 11am. 5p entrance
  - Birth centre stall at jumble sale, Union Hall 14th May.
  - 14th May, Friends Centre 8.00pm. Introductory Talk, plus 2 films 'Hello Baby' & 'A Child Is Born' followed by a discussion. 50p
  - Regular Meetings  
18th May, 67 Hythe Rd 8.00pm.  
1st May, Yoga in pregnancy classes 3.00pm, Lansdowne House, Lansdowne Square, Hove 738029. £3 per Month Please Book.

# Brighton Voice

May '79  
No. 56, 15p



### GROUPS, CO-OPS, ETC.

**ANIMAL ACTIVISTS:** anti factory farming etc. V. Smith 366, Portland Rd. Hove 411484.  
**ANOREXIC AID:** 1st Monday of month. Noreen 682054 or Penny 735362

**BEE KEEPERS ASSOCIATION:** Brighton & Lewes Division of Sussex Beekeepers. Lyn Hawkins, 14 The Lees, Peasehaven 4522

**BING CROSBY CLUB:** 737357 (am)  
**BRIGHTON HOSTEL:** 18 Dorset Gdns Soup run bottom West St 10 - 11 pm daily. Help needed 682089

**BRIGHTON SOCIETY:** Environmental group. S. Montford 10, Clermont Road.

**BUS USERS ACTION GROUP:** R. Spridge, 7, Tivoli Rd., 562172

**CAMPAGN FOR HOMOSEXUAL EQUALITY:** 202950 8 - 10 pm daily.

**CAMPAGN FOR NUCLEAR DISARMAMENT:** 28633

**COMMUNITY ARTS WORKSHOP:** Dance, drama, mime, music. St. Anne's Hall, St. Georges Rd. Kemp town. 697493 for dtls

**CONFERENCE OF SOCIALIST ECONOMISTS:** K. Smith, 10 Warleigh Rd.

**FEDERATION OF TENANTS ASSOCIATIONS (BTOW):** 72, Swanborough Place.

**FRIENDS CENTRE:** meeting Place with F.E. classes. 16, Ship Street. 27835

**FRIENDS OF THE EARTH:** Margaret McLlroy, 32, Over St. 696425

**FRIENDS OF THE WESTERN BUDDHIST ORDER:** Yoga, lectures etc. Beginners meditation Mon 7.15 19, George St. 693971

**SOCIETY FOR ANGLICAN-CHINESE UNDERSTANDING:** D. Puroi, 12, Berkeley Row, Lewes. 24144.  
**SUSSEX COUNTY SKATEBOARD ASSOC.** 737357.

**TRADES COUNCIL:** Coordinating group of local trades unions affiliated to the TUC. Andy Durr, 235, Ditchling Rd. 505314.

**LABOUR HISTORY PROJECT & LABOUR HISTORY PRESS:** as above.

**TRADES & LABOUR CLUB:** Meeting place for trades unionists. 16, Lewes Rd. 601101.

**TRANSFORD 2000:** Wilf Martin, 49, Benfield Rd., Portslade. 416105. Meetings second Tues. of month. Btn. Station. 7pm.

**UNITED NATIONS ASSOCIATION:** Nancy Dore, 157 Surrenden Rd. 501370.

**WEST PIER SOCIETY:** John Lloyd, 5, Belle Vue Gardens. 603705.

**WEST HILL COMMUNITY ASSOCIATION** 21359.

**WIDOWS CLUB:** 47, Tivoli Crescent, Dyke Rd. Meet 8pm, fourth Wednesday each month. Unitarian Hall, New Road.

**WOMEN AGAINST FASCISM AND RACISM:** contact c/o Resource Centre.

**WOMEN FIGHT RAPE GROUP:** Contact Women's Centre.  
**WOMENS CENTRE:** at back of Resource Centre. Open: Tue, Wed, Thur, Sat: 11 - 2 & Tue, Wed: 6.30 - 8 pm. Pregnancy tests, rights, etc. 605911.

**WOMENS INTERNATIONAL LEAGUE FOR PEACE & FREEDOM:** 684604 and Lewes 4161.

**WOMENS LIBERATION:** Meet Resource Centre every third

### PAPERS

**CARE:** Paper of the ANTI-RACIST, ANTI-FASCIST CO-ORDINATING COMMITTEE: Campaigning paper, excellent, nationwide, from Public House Bookshop, or File 3,5, Huntley Street, London.

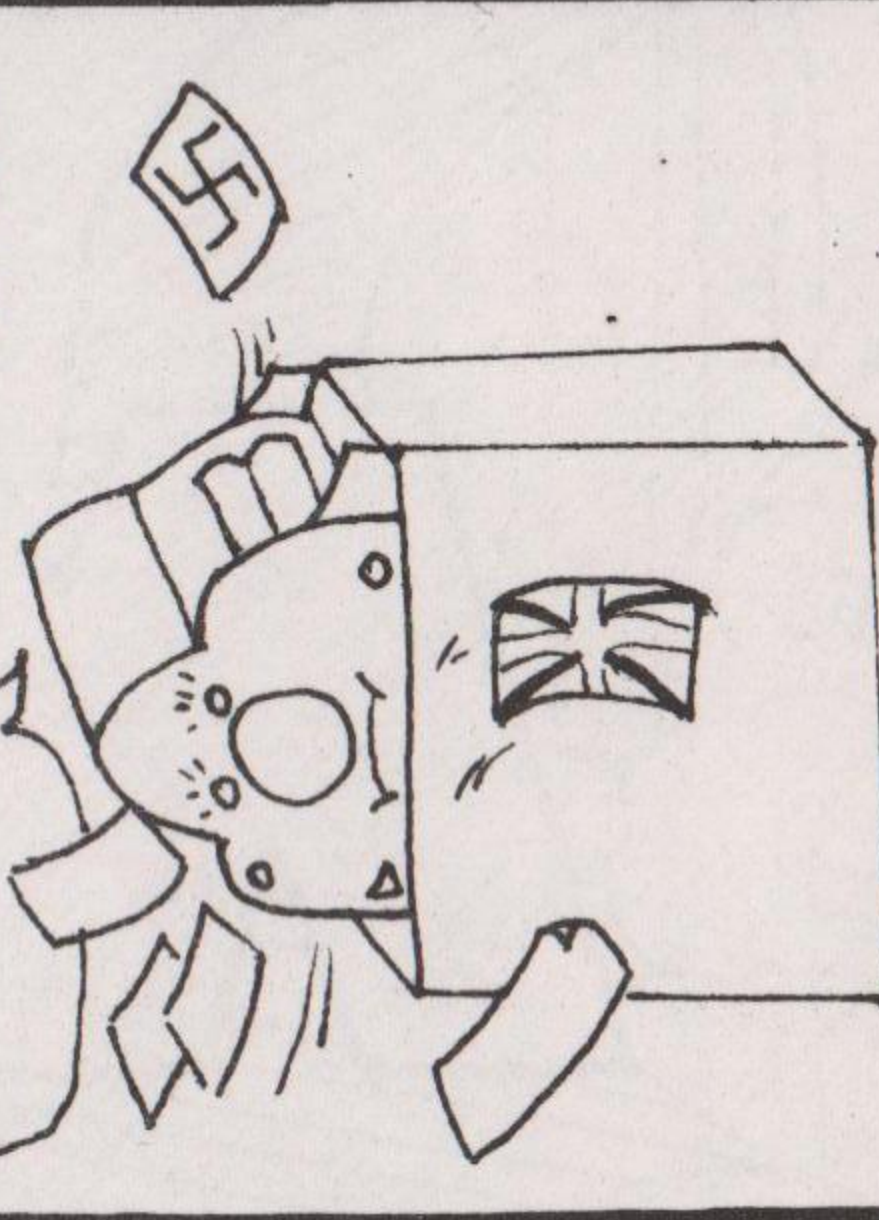
**BULK ORDERS / DONATIONS:** MOVING TARGET: Brighton's film magazine, from good bkshops.

**QUEENSPARK:** Paper for the Queens Park area; 18, Windmill street Brighton.

**WAYBILL:** Newsheet of T&GWU, 1/402 Brighton & Hove District Busmen, from Conway Street Depot, Hove

**WHOLE EARTH:** Alternative technology, organic living, local environmental action. 11, George St. 691318.

**OUR PRESS WILL NOT PRINT SEXIST, RACIST OR IMPERIALIST PAPERS.**



Printed and Published By Pendkarn Ltd. 7 Victoria Rd. Brighton

### POLITICS

**ANTI FASCIST COMMITTEE:** c/o 179, Lewes Road, Bton.  
**ANTI NAZI LEAGUE:** 12, Little

### SHOPS

**ANANDA:** 19, Bond Street. Odds & ends, Indian crafts, incense, etc.

**BRIGHTON HOSTEL SHOP:** Charity shop, 105, Islington Road. Open 10 - 4. Articles wanted.

**GREENS:** Vegetarian Restaurant, 7, Victoria Road, 27878.

**Eves:** Wed-Sat 6-10. Sun 12-5. Takeaway. Catering. P'haven 2751

**INFINITY:** 25, North Road, 603563.  
**FOOD:** Macrobiotic/wholefood supplies. Open 9.30 - 5.00 closed all day Wednesday.

**BAKERY & PIE SHOP:** Open 9 - 5, except Wednesday, 9 - 5.30.  
**BULK STORE:** Bulk supplies. Open Tues. - Sat: 9.30 - 1 & 2 - 5.

**TEMP TOWN BOOKS:** 91, St. George's Road; Radical literature: new and second-hand books.

**ELIC HOUSE BOOKSHOP:** 21 Little Preston St. 28357. Member of the Federation of Alternative Booksellers. Real books and mags, records and cassettes of ethnic and improvised music. Basement is open for continuous sessions & courses. See Whats On PULSE: Sussex Univ. wholefood cafe

**SCR Falmer House:** Feminist collective. Mon-Fri. 12-2.

**SAXONS VEGETARIAN RESTAURANT:** 48 George St. Btn. 680753 Mon-Sat. 11.30-5. Also Fri & Sat. 7.15-11. Bring own wine.

**SOLOVITZ BOOKSHOP:** 28 Trafalgar St. Btn. alternative books & mags. basement reading room. Tel. 692880.

**SIMPSON SUPPLIES:** Wholefood, reading publications etc. environmental centre. 11 George St. Btn. 691318. Mon-Sat. 9.30-5.50. Closed Thurs.

### ALTERNATIVE MEDICINE

**ACUPUNCTURIST:** Peter Deadman B.A. Brighton & Lewes; Lewes 77996  
**ACUPUNCTURIST:** J.P. Scott, ALEXANDRA TECHNIQUE: S.J. Scott

33, Surrenden Crescent, Brighton 559379, Appt. only

**HOMEOPATH:** Robert Withers, Brighton 699212, Appt. only.

79, Mill Street Falmer.

**MASSAGE:** Introductory courses & SHIATSU; Contact Public House Bookshop, 28357, (No wankers, please).

**SECOND SUN HEALING:** Through direct action & increased understanding. 7, Terminus Road, Brighton 29248.

**SHIATSU:** Reflexology, Swedish massage, Bach flower remedies Marek Urbanowicz, The Palmeira Clinic; 6, Palmeira Square, Hove. Brighton 734465, Appts.

### Subscriptions £2-50 for 12

**BACK ISSUES & "Region Six"** Special Report available from 7, Victoria Road, Brighton 27878.

### A DVICE

**AGE CONCERN:** Old people's welfare. Mon-Fri 10-12.30 & 2-4pm 57 Ditchling Rd. B'ton 683275  
**BIT BY BIT:** Help & info (voluntary social work unit) 24hrs, 27878.  
 Visits by app't only. Volunteers wanted.

**DANGER PREVENTION:** (Area Health Authority) 23344

# ONE-MAN BAND ON PIER?

Amenity groups often get into petty internal squabbles, but the fight presently going on within the West Pier Society is something different. What is at stake is the future of a major community-based initiative in this town. If John Lloyd, the Society's Secretary, has his way this will now exclude popular participation and any semblance of control by the people of Brighton.

John Lloyd has set up the West Pier Company using £600 donated by the public to save the pier, and nobody but the SELF-APPOINTED company directors can find out what is going on or what commitments are being made. But undoubtedly these commitments are large. The Voice understands that if an appeal gets going the first £20,000 will not go to the Pier but to pay the fund-raisers and office rents, etc.

Worst of all, this all appears to have been done behind everyone's

back. The opponents of the present situation say it was specifically agreed the members would be consulted before any decisions were taken and any Company was to be democratic and controlled by the people who paid for it - the membership. How this got turned on its head is a sad

This town once had a fine Pier that was cynically left to rot by an uncaring owner. Nobody had any power to stop him destroying our amenities. We are now threatened with a situation that bears the same marks of lack of accountability. It is a lesson we all need to note. If



story of lack of frankness by the Officers occupied with a weak and divided Committee that could agree on nothing, not even the minutes of its own meetings. Nor could it organise an A.G.M. properly.

anything is a scandal it is this subversion of years of community effort into a personalised campaign that excludes any control by the people of this town.

## TORIES INCREASE F.E. FEES BY 40%

East Sussex County Council have announced a cut of £100,000 in this year's Further Education budget. That means a 25% cut.

It appears that Tory Council leader Green went on a fact-finding tour of West Sussex where fees for Adult Education classes are much higher than in East Sussex and liked what he saw. So he has imported them into his own area of power, safe in the knowledge that Tory groups all over the country have been pressing for a party commitment to make all Adult Education, except literacy, self-financing.

The local result is that fees for Further Education classes will have to go up by an unbelievable 40% from September. In hard cash this means that a 20 week course will now cost £14 instead of £10.

#### EFFECTS

\*\* Already over the last 3 years there has been a drop of 5,000 retired people enrolling on courses in East Sussex. This drop is almost entirely due to the impact

of increased charges. To provoke an even bigger drop by this 40% increase is to mount a massive attack on the opportunities of life available to retired people. It also makes no economic sense. Economies in educational provision, like economies in any leisure-time activity, are known to trigger off higher financial demands elsewhere - doctors' surgeries for example.

\*\* Colleges may be able to meet the cut without too much difficulty, but the independent adult education centres will be seriously threatened. In Brighton the Friends Centre will become extremely vulnerable and the cut

may well put the Principal's job at risk. Needless to say the increase in fees will sour much of the easy-going atmosphere there as in all other centres. £14 is a lot of money to exact from poor people and people out of work who have come to regard adult education as a social lifeline, where friends and contacts are made and extended, and new skills and insights gained.

\*\* Tory policy appears to make an exception to Adult Literacy, but there have been jealous Tory eyes cast on the achievements of educators in this vital area, and when the Adult Literacy Unit finishes at the Friends Centre in March 1980 will the Tories take the chance to finish it for good? Cuts of this nature are widely canvassed in Tory pressure groups and the 25% slashing of vital educational support this year must be taken as a warning of long term Tory intentions to dismantle the whole of Adult Education seen as a social service.

All Art  
to the  
People

Artists should be able to expect a living if their work contributes to the development of the community. But at present community-minded artists have to take up full or part-time employment intrades for which they feel nothing, and which are usually unconnected with their art. Their understandable lack of motivation in these jobs means that they don't do the jobs very well and in addition their art suffers through lack of time and attention. The alternatives are limited. Some, like myself, live on social security in order to develop their art full time, but are troubled by the high costs of monopoly-produced materials and the unwillingness of the employment authorities to discuss or recognise the problems presented to them.

One of the conditions of the employment system is that each person must be registered under the heading of a skill or trade. Once this is done, suitable vacancies can be matched with suitable applicants. But there's no employment heading which says 'artist'. Art as a trade is not allowed to exist. Attempts by artists to show their real abilities to the employment authorities by taking along photographs of sculptures, paintings etc or reviews of exhibitions, books and so on, are met by incomprehension and rejection. Artists are then coerced into unsuitable jobs and any resistance can result in termination of benefits and other enforced hardships.

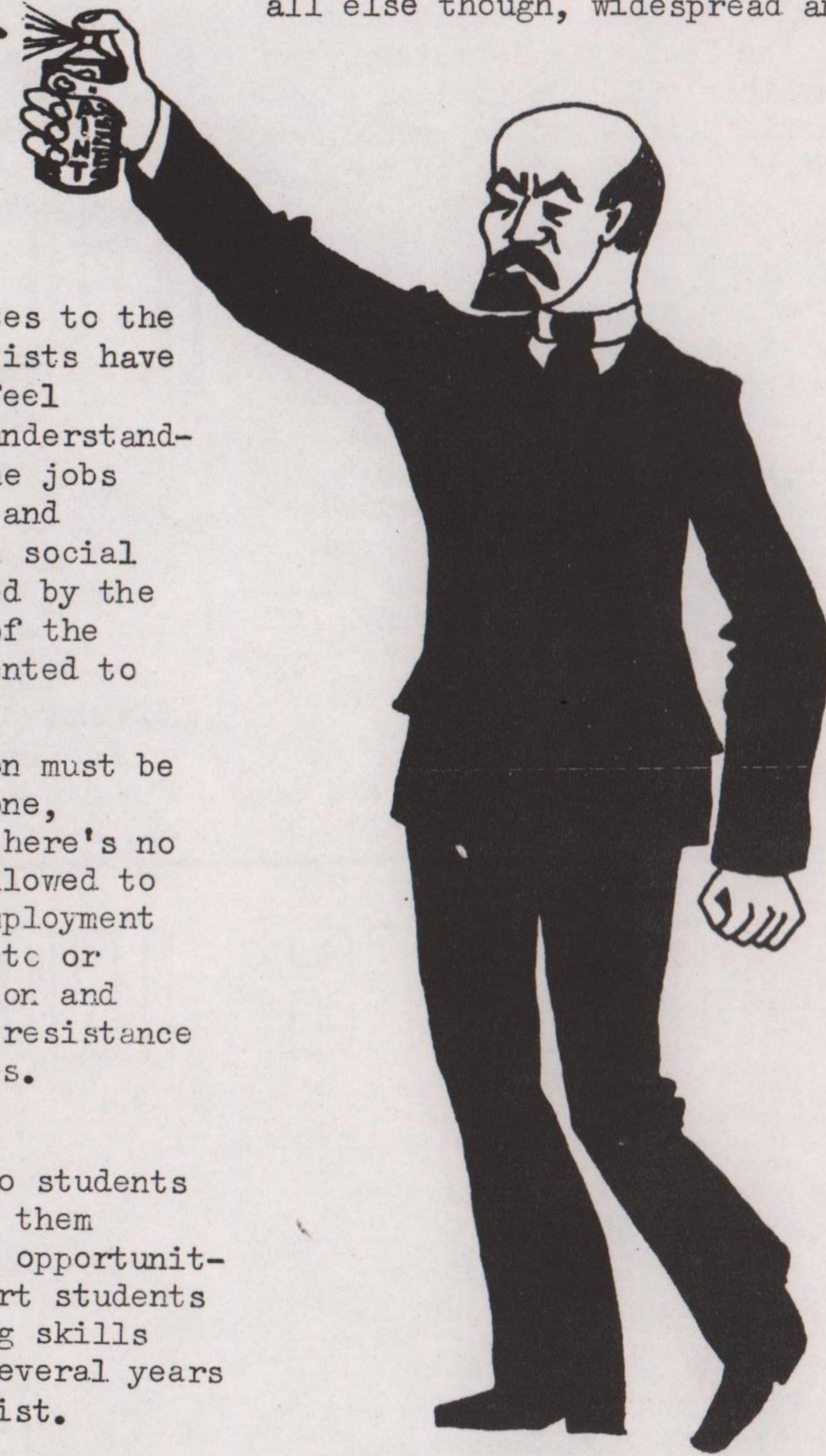
What about the route to being a professional artist through the art galleries, in Brighton or elsewhere? Well, these galleries are all privately run and usually charge 40% commission on anything sold. Some charge weekly hanging fees which leave the artist with high costs to meet if the show is commercially unsuccessful. Artists invited to exhibit are placed in the position of either over-pricing their work in order to meet the gallery's commission, or undercutting the amount needed to cover time and materials in order to sell the work for a reasonable sum.

Other outlets locally include Art Societies' exhibitions, which consist of work by people happy to remain amateurs, and shows by art colleges and the Polytechnic, which are closed to artists outside the college establishment. The public have access only to see and buy the work on display.

No preparation is given to students by their colleges to help them confront the lack of work opportunities, and the majority of art students find themselves possessing skills carefully nurtured over several years for which no vacancies exist.

As for public galleries, the quota of new works purchased is ever decreasing, and the atmosphere cultivated within these places creates a huge gulf between the work and the people to whom art supposedly addresses itself. And here the circle becomes complete, because until the work of artists does integrate itself more fully within the community artists cannot claim the right to earn a living by their contributions.

Certain things, then, are necessary in order to create more contact between the fine arts and the people. And we can start in Brighton. More exhibition space is needed, and this could be provided by groups of people renting halls privately and giving public showings of their work. Local shops could donate any free wall space to the work of new artists. Mixed media events could be staged. Magazines could be put together and distributed to serve as an outlet for Brighton art; local publications approached with a view to collaborating on graphic projects or using more illustrations. Above all else though, widespread and



basic information is required from artists, explaining in clear and honest language what they are doing and wish to achieve. Discussions could then take place within the community itself.

In such ways we could work towards a Brighton art, reinstated as the expressive voice of the people.

Such an aim needs much cooperation and help, initially among the artists themselves. Can we please declare open a new, shared art?

(From a longer article by John Michals. See also letter page)



STOP  
BRIGHTON'S



# DEATH SALES FAIRS

Dear Sir/Madam,

The Defence Components Exhibition, due to take place at the Metropole Hotel, Brighton, 24-26 April, will doubtless not make much impact on the people of Brighton, many of whom may not even be aware of it.

This is no ordinary exhibition; in the words of the official handout, it is "an unprecedented occasion" offering a market place confidently expected to attract "designers, main contractors and users from all over the world". It will be sponsored by the Defence Manufacturers' Association and officially opened by Sir Ronald Ellis, Head of Defence Sales, Ministry of Defence. Such a Trade Fair in our own town raises two questions of extreme importance to us all: one is economic, the other moral.

With an annual arms export worth more than £800m, Britain is the third largest arms supplier in the world. British arms factories possess an extremely high level of technology. This may be considered by some people to be an excellent state of affairs. It is highly profitable, for one thing. And is it not, after all, one of our main concerns to expand the export trade? And doesn't this trade provide jobs for many at a time of mass unemployment?

We believe that this attitude represents a tragically shortsighted view. A high level of arms manufacture distorts our already ailing economy, is inflationary, and a burden on the taxpayer. Recent events have shown the economic dangers of arms sales. At the time of his overthrow the Shah of Iran had ordered arms from Britain worth £2 500m, representing employment for 20 000 people. These orders have been cancelled; redundancies have already begun. Those who saw the BBC "Tonight" programme of February 21

learned that the Shah, who spent one third of all his considerable oil revenues on arms, possessed more Chieftan tanks than the British Army, and had put in a further order for 1 200 "Super-Chieftans" - an order which has now been cancelled. An entire Rolls-Royce factory was making the engines for these tanks. While Rolls-Royce was developing the new technology required to do this, the capital risk was taken by the Government on behalf of the taxpayers.....

No more arms death sales  
No more arms bazaars



Now we are left with hundreds of half built tanks, missiles etc, said to be worth £600m but virtually unsaleable unless another "friendly" power comes along.

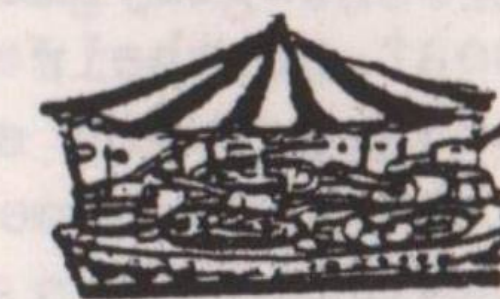
It seems to us a very curious and lamentable state of affairs, that we should use so much of the experience, skill and imagination of British designers and engineers to manufacture weapons of destruction. Does anybody doubt that the needs of our own people, and especially those of the impoverished countries of the Third World, are for the tools of peaceful construction? The factories which produce tanks could as easily make tractors; the amount of investment embodied in the manufacture of arms could be diverted to a thousand peaceful uses. If we are so efficient in producing arms, why are we less efficient in producing other goods for export? That is the economic question.

But it is also a moral question. Do we really believe that the prosperity of Britain can be achieved by producing, for instance, "cluster bombs with a high killing capacity" as a recent British arms sales promotion film has it?

We are living in a world beset by terrible dangers. Peace is threatened by conflicts which may, if not stopped, engulf us all. Our national concern must be to preserve peace by actively working for reconciliation between nations, rather than shortsightedly to seek economic gains by enabling people to kill each other.

Yours sincerely,

- Frank Allauin MP, Chairman of the Labour Party
- Ruth Atkinson, Sec Sussex University Health Service
- Quintin Barry, Parliamentary Candidate, Kemp Town LP
- Dr John Beale, Parl Cand. Pavilion Ecology Party
- Dr Robert Boakes, Sussex University
- Geoffrey Bowes, Recording Clerk Religious Society of Friends
- Brighton, Hove and District Trades Union Council
- Bton Preparative Meeting of the Religious Soc of Friends
- Peter Bunker
- Rev G Coates, St John the Baptist
- Rev Richard Eckersley, St Nicholas
- Dennis Forrester JP, Headmaster St Johns School
- Prof Duncan Forrester, Edinburgh Univ
- Rev Margaret Forrester, St Georges West Edin.
- Rev Denis Hayes, St Pancras Lewes
- Rev Seamus Hester, "
- Rev Bruce Hallyar, St Andrews Moulsecombe
- Dr H.E. Hosseini, Sussex University
- Gabriel Josipovici, "
- Prof Laurence Lerner, "
- Dr Robin Luckham, "
- Sandy Merritt, Sec Campaign Against the Arms Trade
- Sheila Oakes, Sec National Peace Council
- Prof David Pocock, Sussex University
- Coun Don Ranger, East Sussex C.C.
- Alan Staley, Brighton Peace Forum
- Dr R.J. Suffolk, Sussex University
- Alan Tuckett, Principal Friends Centre
- Rev John White, St Giles Snoreham
- Ray Watkinson



CAMPAIGN  
AGAINST  
ARMS  
TRADE

HERE TO STAY HERE TO FIGHT



Brighton Polytechnic and Sussex University have recently been in occupation. These occupations formed part of the on-going national campaign, as well as the local one, against attacks by the state on overseas students.

It is important that these attacks are not seen in isolation. They form part of:

- \*a consistent series of racist attacks by the state.
- \*a concerted attack on all students, narrowing the access to Further and Higher Education.

Just as Immigration Controls reflect the true racist nature of the state, so quotas, discriminatory tuition fees accommodation charges, special deposits, etc, imposed on overseas students reflect a real change in policy. In order to explain this change it's necessary to examine Britain's role with relation to the Third World countries.

### EDUCATION ?

Almost 80% of the overseas students in British universities and colleges come from what used to be British colonies. The present relationship of these countries to Britain is bound up with that historical relationship - IMPERIALISM.

For Britain imperialism meant the reaping of super profits and for the colonies it meant the start of under development. Under-development means the development of some countries (the imperialist ones) at the expense of others (the colonised ones).

In the colonised countries the traditional economies and ways of living were destroyed. Their peoples forced to work for their coloniser's

Similarly traditional education systems were destroyed, replaced by Missionaries, who trained people to be 'civilised' in the western sense.

In this way a class of western educated people was created. When this was fully established 'independence' was granted, and the government of the country handed over to this responsible class - forever looking to the west for their values, systems of government, and continuing the flow of capital to the British coffers.

To ensure the maintenance of this unequal relationship, it became important to "educate" people in Britain. Education in Britain is never value free. If you train as a lawyer, you learn that rights are expensive to defend, and that property is sacred.



IF BRITAIN PLAYS SO IMPORTANT A ROLE IN MAINTAINING THIS RELATIONSHIP, THROUGH EDUCATION, THEN WHY THE PRESENT ATTACKS ON OVERSEAS STUDENTS?

\*Firstly, Britain's role in relation to the Third World is changing. Britain's ruling class, facing an economic crisis, can no longer afford to "educate" as many people from these

countries. Increasingly, France and West Germany are taking over, and the number of overseas students in these countries is rapidly growing. Also, economic and social relationships within Third World countries themselves are changing, with the development of national liberation struggles. This, in turn, has obviously affected students' attitudes to their education.

\*Secondly, the attacks have to be seen against the background the government is making in public expenditure. A cut-back in the number of overseas students means fewer students all round. Fewer students need fewer courses: this means fewer tutors to teach, cleaners to clean, etc - ie an overall loss of jobs.

### HOW DOES THE GOVERNMENT HOPE TO INTRODUCE THE CUTS THROUGH OVERSEAS STUDENTS?

The government can do this by exploiting the inherent racism of British people, resulting from Britain's Imperialist past. This means that British workers believe they have more in common with the British ruling class, than with workers in eg Ghana.

In the same way, the government has been able to pass the racist IMMIGRATION LAWS

without much opposition from the labour movement.

It is up to us collectively to oppose the government further using racism as a means of "explaining" the economic crisis. The cause of the crisis is the capitalist system, which cannot provide all working people with jobs, and maintain decent standards of living.

On a practical level, we must unite together and support:

- \*a demonstration organized locally by Sussex Federation, on May 2 or 3 ... details from Poly or University,
- \*joint discussion forums at the Univ. on Thursdays, organized by both Trade Unionists and students. It is hoped that these will improve relations, and provide the basis for more co-operation and joint activity between students and workers on the campus.

## May Day COLOUR - IN

BRING A BIT OF COLOUR TO MAY DAY - AND THE REST OF THE YEAR. FOR THE BEST COLOURED FRONT PAGE WE WILL BE GIVING THE LUCKY COLOURER A FREE YEAR'S SUBSCRIPTION TO THE VOICE. ( 2 YEARS SUBSCRIPTION FOR THE RUNNER-UP? )

SEND YOUR COMPLETED FRONT PAGES TO BRIGHTON VOICE 7 VICTORIA ROAD, BRIGHTON. WE HOPE TO DISPLAY THEM ALL AT THE CO-OP FAIR AT THE END OF MAY.

cont. p. 12 ->

On Friday 20th of April the Executives played at the Alhambra. They were quick to point out that the Strangers had become rich and famous from being sexist and that they had every intention of following suit. Their performance was certainly stereo-typically 'macho'-that is, pelvic and self-congratulatory. More importantly, though, most of their words were impossible to hear...their supposed 'political' interlude especially, when the only audible words were 'National Front'

and 'put it up, put it up'. They failed to respond at all to one woman's protest over a microphone that we could not hear the words and that the few we could hear sounded sexist.

But if their words weren't audible their visual effects certainly conveyed their message. The cardboard lifesize figure of a woman in skimpy clothing with her head looking backwards over one shoulder, tongue invitingly between teeth, confirmed their pretensions to equal the sexism of

## executive assault

## welding together safely

Last week Brighton Work Hazard Group in conjunction with the Workers Education Association organised a public meeting on the hazards of welding. The Panorama documentary on 'welders lung was shown, and followed by a talk by Robin Young of Aston University, Safety and Hygiene Dept., and a detailed discussion.

The fumes welders are exposed to is a mixture of substances from the parent metal, the electrodes and coverings. The gases can be Nitrogen Dioxide, Ozone and even Phosgene if solvents are used in the process. Many of these fumes are lung irritants and some certainly have long term effects-Twice as many welders die of pneumonia as the average worker.

Disease caused by the fumes are metal fume fever from Zinc and Copper gases, poisoning from Cadmium, Nickel and Magnesium, and lung irrita-

tion and increased vulnerability to lung infections from Ozone exposure. There is also known to be a lung cancer risk from Chrome and Nickel fumes, and possibly from Cadmium and Beryllium.

The meeting also discussed ways of trying to reduce the levels workers were exposed to in a number:-

1. Finding out what is in the welding rod and parent metal before welding it. Having all boxes clearly labelled and getting measurements made of all the fumes.
2. Some rods produce 10 times as much fume as others. Substitute cleaner for dirtier rods.
3. Do not weld plated, galvanised, painted, or dirty metal. Get it stripped first.
4. Welding alloyed material or welding in confined spaces may lead to dangerously high levels of fume. Ventilation is obviously important

and workers should try and get the best possible, whilst remembering the problem at source should be cut down as much as possible. Respirators are often uncomfortable, do not do the job, or not well maintained-they should be used only in conjunction with other improvements or temporarily whilst other ways of alleviating the problem are sought.

The Hazards Group is hoping to arrange more meetings on various hazards, and if you would like one on a specific problem, contact the group. Also, if any other information is wanted, or you want to get involved in the Group, please write to;

BRIGHTON WORK HAZARDS GROUP, c/o THE RESOURCE CENTRE, NORTH ROAD, BRIGHTON, or 'phone, BRIGHTON 686302.

### Socialist Bookbus

In response to our call for Left groups in Brighton to provide us with information on their activities, we received this first piece from the S.W.P.

The bookbus is an old mobile library converted into a travelling bookshop with a wide range of books and pamphlets. These cover: socialist politics, women's issues, history, trade unionism and fiction. There are also tape recordings, calendars, posters, badges and various travelling photo exhibitions.



Think of socialist propaganda and what is the first thing that comes to mind? - closely typed tatty leaflets, worthy but dull slabs of print, relieved by the occasional mug shot or splash of colour of the newspaper title.

The Socialist Bookbus is the beginnings of an attempt to rescue socialist ideas from boredom and jargon and express them in everyday language using 20th Century methods - Film, photos, badges tapes, etc.. "Socialists Unlimited" is an open ended group of socialists willing to aid or link up with anyone who has ideas or projects to express socialist ideas in new and accessible ways "we want to take socialist, which are after all an imaginative leap forward to a future better society and put them in the language of the imagination".

Future projects include jigsaw puzzles, wallcharts, slideshows and video. Anyone interested can contact them at the address below.

# S.W.P. CULTURE SHOCK

As well as taking these to areas of the country normally starved of socialist literature, the bus carries projection equipment and films. This has made it possible to set up a national circuit and film club for the type of films - documentaries, thrillers and comedies - that are often denied a showing outside the major cities. We believe that it is possible to get our message across and give people an enjoyable night out.

Films already shown include: Harlan County, Blacks Britannica and Hearts and Minds. The next shows are:

WEDNESDAY 23 MAY - Brother Can You Spare a Dime? About the Depression years in the USA with film of Billie Holiday, Woody Guthrie, silent movies and archive newsreel film of workers struggle and unemployment.

TUESDAY 19 JUNE - Modern Times Charlie Chaplin's comedy about individual and city life that later got him hounded out of the USA by McCarthy.

AND... Por Primera Vez A Cuban short about a travelling film show!

Both films are at 8.00pm at the Resource Centre, North Rd, Brighton and at the University during the day. Membership is 60p for the night.



Socialists Unlimited and the Bookbus can be contacted at 265 Seven Sisters Rd, London N4. The Bookbus desperately needs cash to meet a £700 repair bill - all donations, however small, are welcome.

Brighton SWP



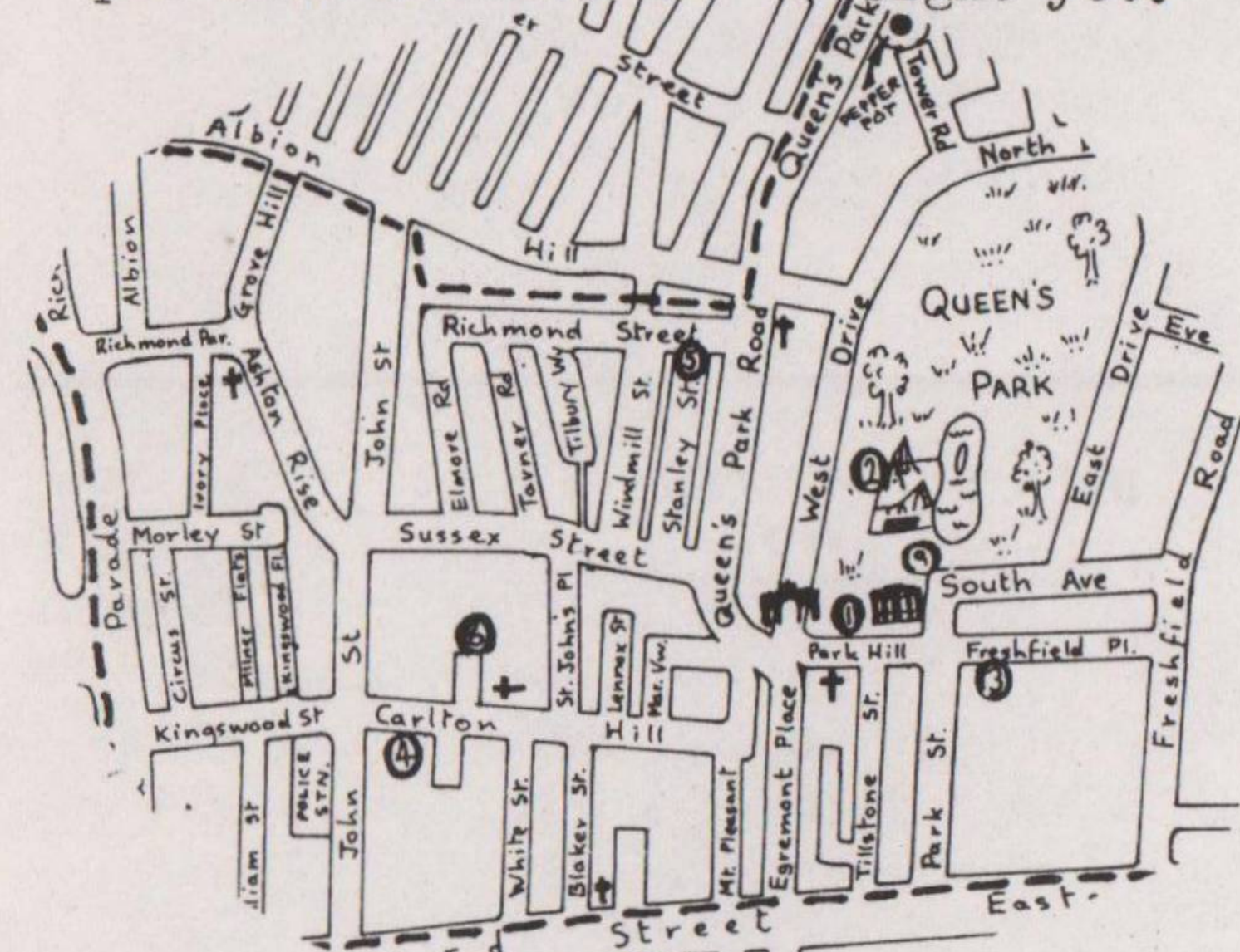
ALL POWER TO THE IMAGINATION.

# Queen's Park

FORMERLY PRIOR HOUSE

## Community Association.

Queens Park C.A. is run by and for the people (6-7000) living in the area around the park and Sussex St. The area immediately around the park (eg. West Drive) gives an impression of great prosperity but this is misleading. Many young families live in the relatively cheap terraced houses in the area, whilst on the western edge there are 1300 Council properties. About 1/4 of the areas population are elderly. The problems of the area are mainly those of the old and young-respectively, loneliness, cold, lack of shops, and little open play space other than the park. Suggestions for an adventure playground to be set up on an empty site in Sussex St. seem to have been squashed by the Council. The C.A. did win approval for a sand pit in the park, but ended up paying for and building it themselves. Also, the Spa Nursery flourishes, although the original plans for a community hall there were dropped by the council on grounds of expense. Efforts still continue to acquire a community centre, but no positive results are in sight yet.



Since it was set up in 1976 out of the ashes of the Prior House campaign to get Prior Hse. back for the community (unsuccessfully) the association has slowly grown, through the issues already mentioned, and social events. A recent jumble sale raised £97. There are OAP socials, weekly toddlers groups a playscheme planned for August; the annual summer Festival (July 7th); a Barn Dance at the Boys Club, Edward St., May 4th.

*A S.T.E.P. in the right direction!*

We talked to Mike Sherrad who is one of the 10 Special Temporary Employment Programme (STEP) workers in the Brighton Community Care and Development project set up by the Resource Centre. Mike is a full time paid worker for Queens Park. Since starting work in December he has been building up a network of street contacts, now about 40. This means much more effective communication between people in the area and the C.A. Mike has also worked in cooperation with social services in setting up the Neighbourhood Care scheme

It has been said that volunteers in Community Associations are saving Social Services money by doing unpaid social work. Mike fully agreed that social services must be made

to meet their responsibilities fully towards social work but stressed the inability of a bureaucracy like social services to deal with problems, like loneliness, from a community base. It was important that these 2 strands of 'caring', social and community work, be maintained to the full and therefore that Social Services were prepared to fund community development and the sharing of resources within the communities properly. C.A. volunteers must have access to sufficient resources in the way that social workers do, to develop community networks and increase a community's identity and capacity to tackle common problems collectively. The existence of a full time worker helps the C.A. to maintain a more obvious presence in the community; eg. Mike hopes to increase the regularity of the newsletter which has only appeared 3 times since 1976. This should not be confused with Queen Spark Books who are an independent organization.

### Politics ---

As a politically non-aligned and non-religious organization, Queens Park avoids any explicit party involvement, although any N.F. activity would meet with a quick response. The C.A. are also lobbying candidates in the Borough elections in conjunction with the Brighton Community Lobby, to find out attitudes to community groups. Queens Park straddles 2 Tory wards, Pier and Queens Park, but most of the councillors have shown little interest in the C.A.

### --- and Involvement.

The A.C.M. last November attracted 40 people, although it is difficult to measure involvement since there aren't any 'campaign' issues at present. Meetings are open, and collectively organised and run. As is often the case, however, it seems to be mainly the articulate middle class residents who get most involved. Everyone in the C.A. is aware of this problem, which they are trying to overcome.

In order to develop as a social pressure group the association must have the support of, and really represent, the local people.

Queens Park are embarking on a campaign to show the relevance of the association to all the people in the area,

If you live in the area and would like to help, contact Mike Sherrad, 71 Richmond St. 2-6 Mon, Tues, Wed.

Part of Queens Park C.A.



# GEORGE ST. ROUND 5 BEGINS



George St. looking North.

A new scheme for the George St. area (off St Jame's St) is at this very moment being considered by our councillors, representative or not. The plan, for some 33,000 sq ft of supermarket, ancilliary offices and stores, plus a 2 story car-park on top, is a variation on an old theme.

### THE STORY SO FAR

Over two years ago now Brighton Council approved a plan for a supermarket, car-park, and office block. The plan had been submitted by Green Elms, a subsidiary of Joe Lyons, and had to be passed on to East Sussex County Council because the office block was contrary to the County Structure Plan. East Sussex quite rightly rejected the plan, because, apart from the office block being contrary to the Structure Plan, it was completely out of scale with the surrounding buildings, and would have caused traffic snarl ups.

A few months later the plan was resubmitted (unaltered) to the town council. This time it was approved without any further reference to the County Council. The Ombudsman later described this as an act of maladministration, forcing the town council to apologise! The damage had been done however and commercial values conferred on the land. This meant that alternative uses for the land for useful things like housing were effectively prevented.

However the development was effectively shelved because the Town Council decided not to sell 3 properties which it owned on the site while they negotiated a revised scheme with the developers. But now Joe Lyons have sold their interests to Allied Suppliers (Cavenhams of Reading) and now they're at it.

### PROTEST

The latest proposals contain no office block, but they are for a bigger supermarket, and a much bigger car-park on 2 storeys above the store. The George St Society has asked the Dept. of the Environment to 'call in' the plan, on the grounds that it is premature to decide on it until after the Public Inquiry into the Central Area

District Plan. The CADP (see last Voice) acknowledges that the area is one of complex planning problems. The plan zones the area for rehabilitation of existing housing, and for new housing, shops, and car-parking, but doesn't specify how much of which. It seems likely that the proposed development points the way to future interpretation of the CADP (eg, the station hyper market) by the Council. Howard Allaway, Chairperson, George St Soc., points out that the proposal is a 'gross overdevelopment of the site which will aggravate traffic congestion in all the streets around it'. He also points out that, although the office block has been abandoned, the plan still does not satisfy the other 2 objections of ESCC to a scheme of this nature. Brighton Council is proposing another Churchill Sq that none of us wants.

### ALTERNATIVE

The Society has repeatedly proposed new housing and renovation of the houses in Little George St., which have been left to rot by the property company. This would result

in 30 badly needed dwellings plus 40 car parking spaces for residents and visitors. Coastal Counties Housing Association are interested in the alternative plan (however see Voice 54 for doubts about CCHA) but the commercial valuation of the site kills any housing plans. The Society has tried all ways to get the original planning approval removed, but without success. In any case Brighton Council have always turned down the alternative plan as 'inconsistent with the CADP! More likely it is inconsistent with private views held by some councillors.

### FUTURE

So far the D of E is not very encouraging about 'calling in' the new plan; and the Society is still waiting to hear whether the D of E will uphold the appeal against the Council's last refusal of the Societies alternative plan. Of course there is always the hope that things will be different after May 3rd. (Hmmm...). Some councillors see the scheme as 'essential to bring back

*continued on page 14.*



Backs of derelict houses in Little George St.

# Tory hands in car park tills

The passion of Tory councillors for more and more car parks has become a mania. Wherever they see an unused space they earmark it for cars and when they can't actually see an unused space they make one, at the expense of housing and other vital community interests. Get the people out, get the cars in! That is their local priority - just one of the many reasons why people who care for Brighton and its many local communities will want to get rid of the Tories this month.

Look more closely at this old, old issue. They have been bringing in National Car Parks ever since the Theobalds tightened their acquisitive grip on the town. Who among the Tories is financially tied up with the NCP? Answer - they all are, otherwise why would they continually hand over large tracts of building land to this outside company? None of the profits reach the people of Brighton.

Look closely at the proposed West St. development - the so-called Ziggurat hotel and monster supermarket. Before planning committee met, a private deal was done by the Planning Dept. and the developers. The developers agreed to pay the planning department £200,000 for the Council to construct adequate car parking. In return, presumably the department agreed to push the plans forward. In the end the Tories on the planning committee rejected this particular deal, after labour cries of 'corruption'. BUT THEY ACCEPTED THE ZIGURAT AND SUPERMARKET AND WILL THEREFORE HAVE TO FIND ROOM FOR CAR PARKS. So the result will be the same: more demolition for more car parks.

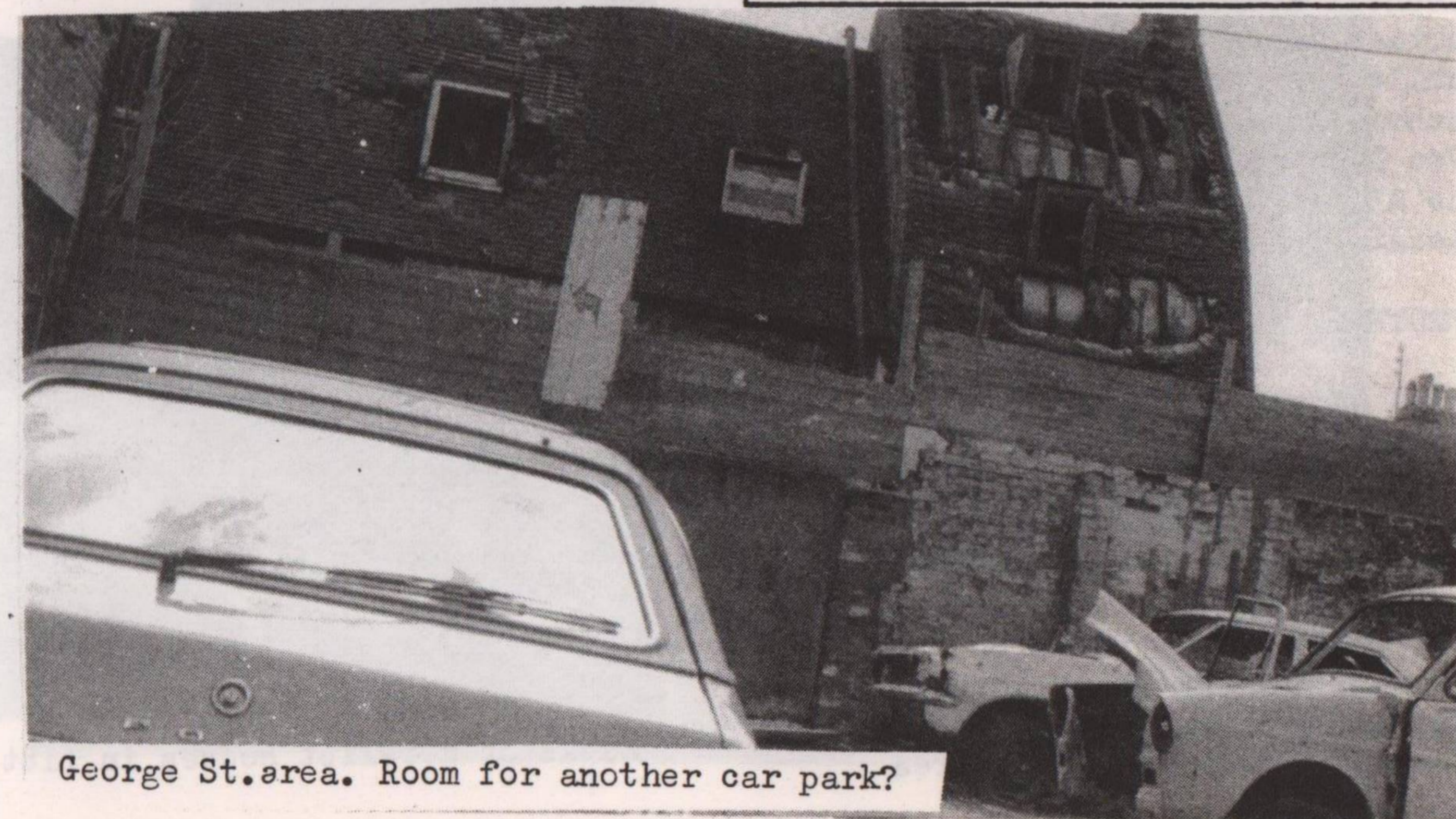
NOTE. The 100,000 sq.ft. of shopping which the Tories have allowed for the West St. site is the amount which was rejected for the station site on the grounds that it would generate too much traffic. Tory answer: if there are too many cars, build more car parks.

Look closely at the George St. development. The Tories have agreed to provide £200,000 of public money for a car park to serve the proposed supermarket there. The developers are delighted, but not the residents who don't want the development at all. They are rightly calling the car park a 'scandalous way of using public money' since it is virtually a gift to a private supermarket.

Look closely at the King St./Bond St. multi park which the Tories have promised. This means accepting the traffic congestion which is making the North Laines area impossible for pedestrians and residents, and, still worse, accepting that the North Laines conservation area will not be rescued from the demolition gangs and the property speculators but will be allowed to degenerate even further. We don't need David Hencke in The Guardian to tell us about Brighton Rot.

And finally look at the Lewes Road barracks. The Min. of Defence is likely to hand over the site to the town within the next ten years, finally admitting that it is the worst waste of space outside Aldershot. There are already plans for its development, and the aim is a mixture of housing and light industry. That's fine. But the Tories also want a huge lorry park there for the lorries which service the exhibitions at the Metropole and Brighton Centre.

Looking at all these developments it is obvious that the Tories on Brighton Council must make a very profitable business out of car parks. Using their power as public landlords of Council property, and confusing it with their power as public planners on the planning committee, they carve up the town for the sole benefit of cars, car-parking companies, and property developers - and that means themselves. 'Car parks for us' should be their electoral slogan. It would truly represent the reality of Tory 'planning' in this town.



George St. area. Room for another car park?

# RATS-IT'S THE RATES

This month most householders have been faced with another rates demand. After initial shock at another swingeing increase (£25-30 per year for the average domestic householder) most people will resign themselves to the delayed reflex action of financing a local state over whose detailed running and parcelling out of cash they have little or no control. Anyway, you might say, we need local government, housing, fire service street cleaners...so we've got to pay for them. But didn't this Tory council scorn them when they respected colleagues picket lines at Sheepcote tip? And didn't these same Tories then dock them a days wages and engage private contractors from Worthing to destroy grass turf at the Level? Just what then does the Council spend our money on?



Well the total increase for the average domestic rate payer over last year was £28. The local medias self congratulation that 'this was the smallest increase in East Sussex seems a deceptive claim and offers no crumbs of comfort to those who have to find the 14% extra. And if we have to play the percentages game this is over 4% more than the average increase in industrial wages last year (before tax), and 2-3% ahead of inflation (as judged through the retail price index)

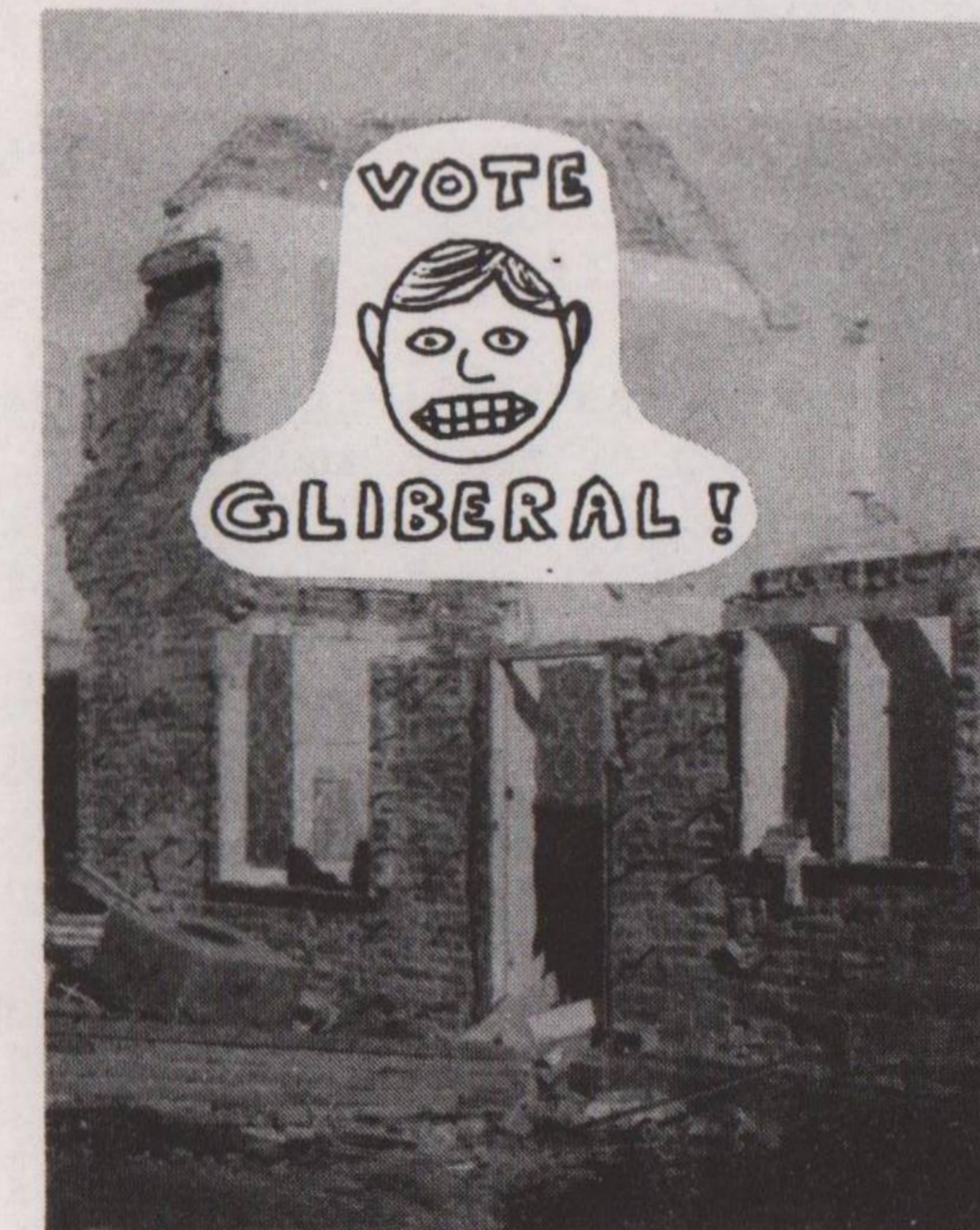
So where did it all go? Well, it didn't go on the refuse collectors and street cleaners. They were down 11%. It didn't go on housing. That was down 26%.

But something must have gone up. *Continued on Page 11*

# Odds AND sods

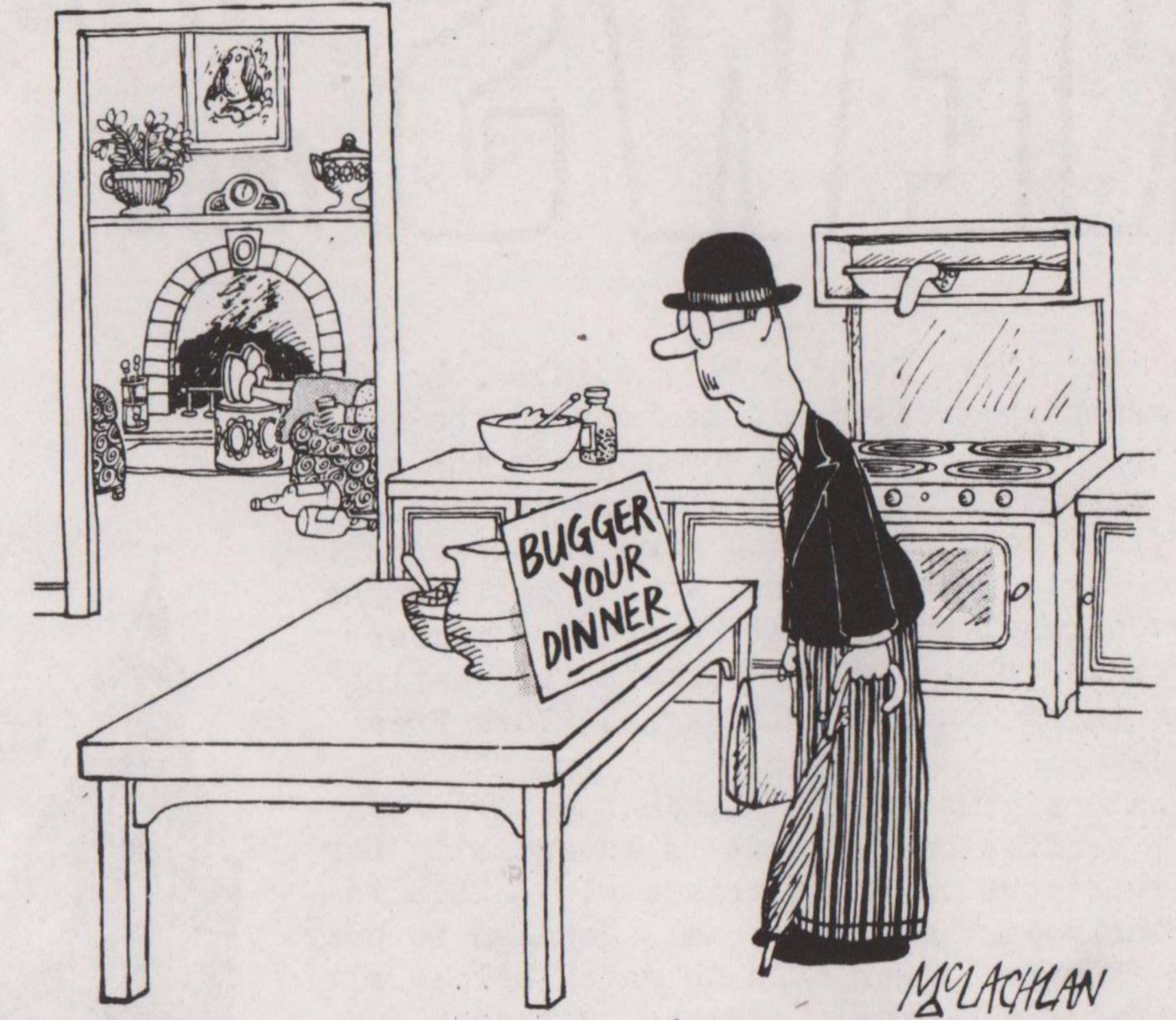
## OUT OF FOCUS

"Focus", the Liberal Party newsletter for Montpelier Ward (edited by Cllr. David Rogers, the boy wonder) recently quoted a piece from the "Guardian" to show how the local libs are getting noticed nationally. It dealt with a "dedicated campaign" to remove a "particularly ugly and obtrusive poster site" - but unaccountably failed to quote the following sentence which made it clear that the ugly and obtrusive face on the relevant poster was none other than David Steel!



## NO (PRINTABLE) COMMENT

The highest-paid executive in the country (Victor Lowndes, head of the Playboy empire at £227,000 per year) recently threw a party for 200 or so at one of his luxury homes, during which he had a stroke of luck, winning £21,000 at backgammon - "more than enough to pay for the celebrations". No comment....

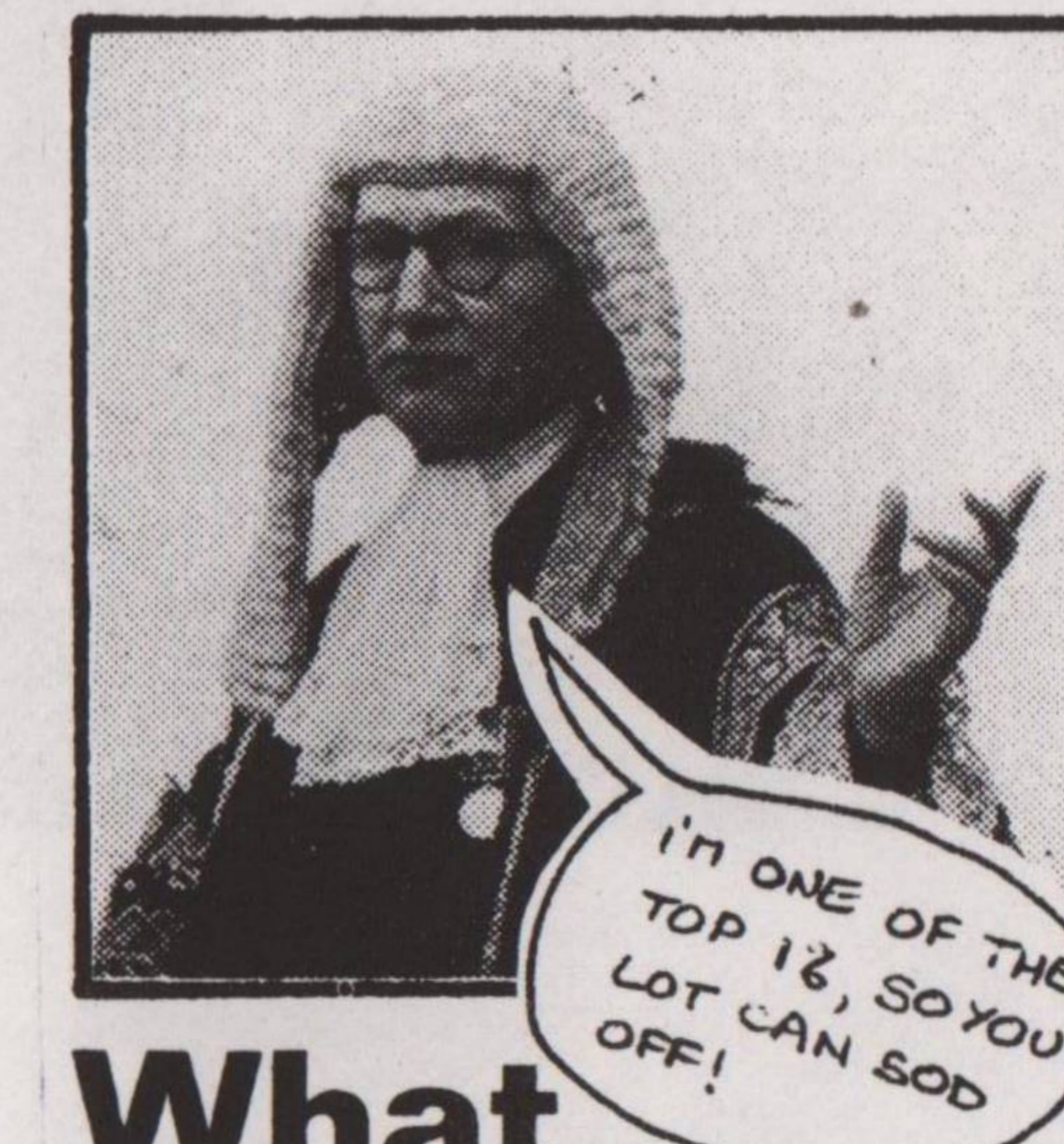


## SLAVE REQUIRED

Open University students please note: your Vice-Chancellor is on the lookout for a resident housekeeper, to run the household, cook for his family and "cater for special occasions". £1854 pa and a flat is offered, and its only a six day week with the odd weekend off as well. Don't all rush...

## WHY WE'RE (IN THE) RED

Between 1974 and 1976 the top 10% of the population increased their share of the national wealth from 57 1/2% to 60% of the total. The richest 1% increased their share from 22 1/2% to 25% - and the 'bottom half' of the population are supposed to be grateful for their 5 1/2% which is all that's left for them.



# What Denning said

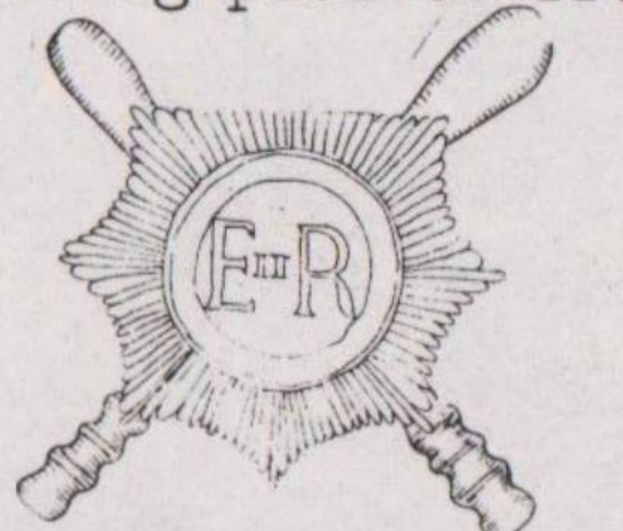
## OFFICIAL DISCRIMINATION

Did you read about the Tavistock Institute's survey on racial discrimination in the civil service? Probably not, because it was almost entirely ignored/suppressed by the straight press.

It shows that out of all applicants for jobs in the DHSS headquarters, white applicants were twice as likely to be considered for clerical officer, as opposed to clerical assistant, posts. In the potential "officer" group, whites were five times as likely to be interviewed and eight times as likely to be offered a job. Having started with 1.5% black applicants, the DHSS ended up with 2 1/2% black employees. No wonder the NF think they're on to a good thing...

## rates-cont.

Yes--Roads: up by 30% :Conference Centres-up by 31%, providing much needed entertainment for deprived big business;-The Police-up by a record 33% so that they can effectively carry out their duty of obstructing pickets from carry-



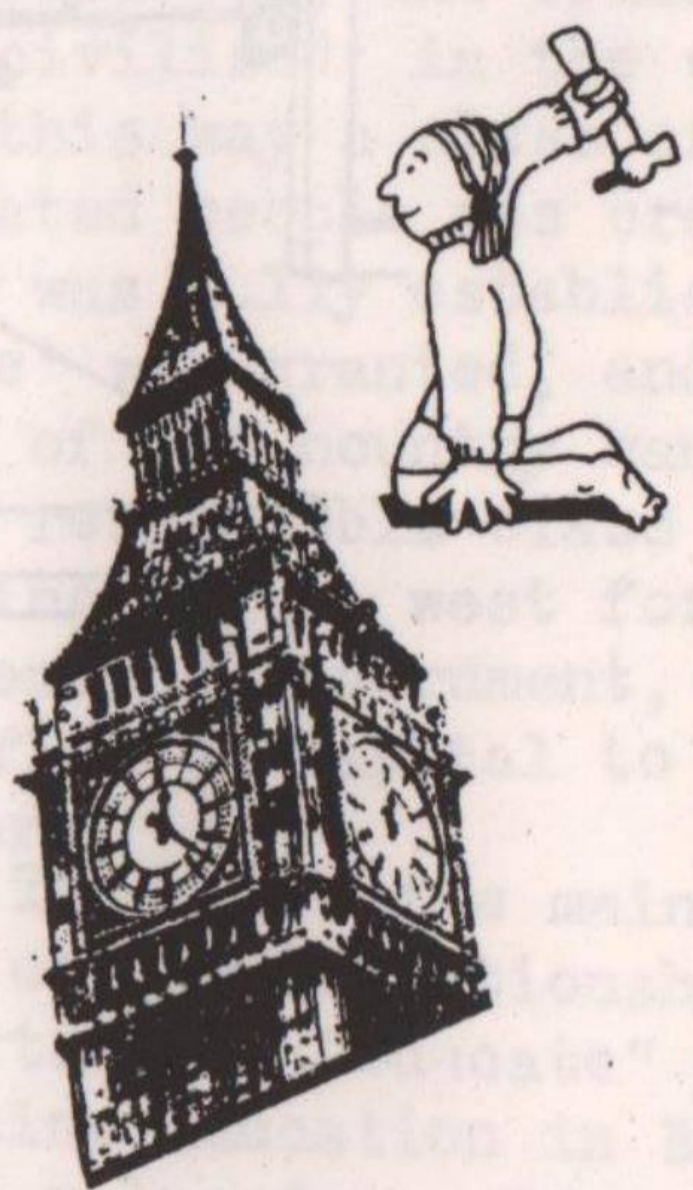
ing out their legal rights, and who, according to the Police Federation, want to erode those rights even further by collating mug shots, finger prints and personal records of every person in the area for their neutral computer files as a prelude to issuing us with I.D. cards. (echos of South Africa?)

Happy ratepaying, folks.

# NEWS from the free press

York: Yorkshire Evening Post editor John White has recently treated all members of the Institute of Journalists working for the paper to an expensive meal at an exclusive club as a reward for scabbing on NUJ members during the strike earlier this year. No information has yet been received of what reward IOJ members are giving their NUJ co-workers for getting them a 1 1/2% increase in wages. (York Free Press).

Manchester: The greater Manchester Transcendental Meditation Movement is advertising for 150 levitators to stop strikes (!). This is apparently part of a national campaign to prove that "We no longer need to watch helplessly as industrial unrest, strikes, violence and disorder gradually paralyse the nation". (New Manchester Review).



The ultra right wing, National Association For Freedom has become associated in peoples minds with the National Front (never!) they were rather worried about this and have changed their name to the "Freedom Association", don't expect any change in policy or actions though, the same gang of retired army officers are still running the show. (STATE RESEARCH)

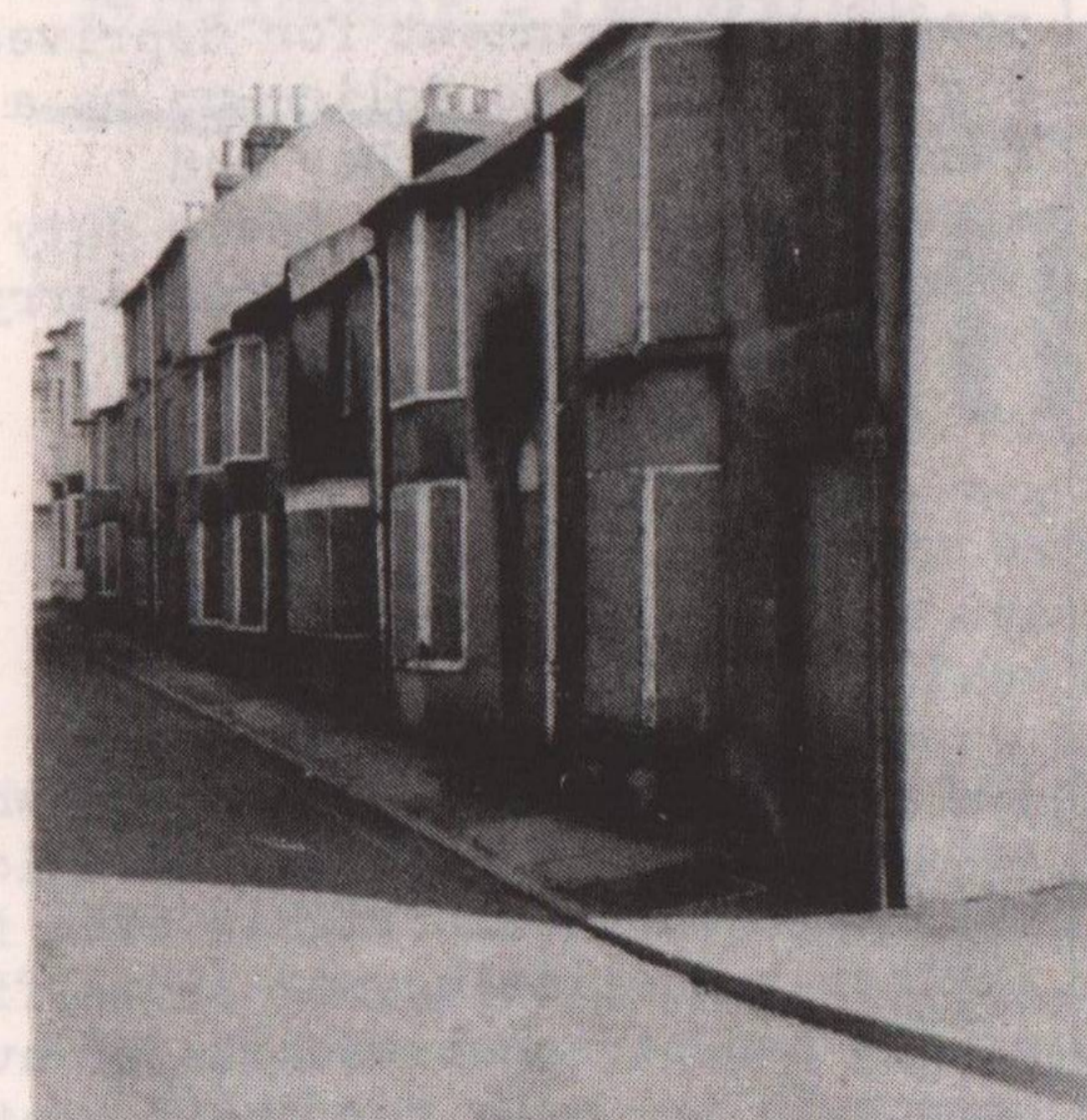
Rochdale: Sterling Fashions took on a (rather desperate) trainee machinist, to be paid at a very generous £1.00 per hour. However, when she had worked a week in hand, she was told the real rate was only 79 p. Not surprisingly, she left. (Shades of CBR). (Rochdale Alternative Paper).

Workers at Naburn Hospital who have just benefited from a generous and freely offered rise will be pleased to hear that others have also gained from the bountiful spirit abroad in the area. Their Unit Administrator, for instance, has just been presented with a brand-new executive chair, costing £350. How nice to know one's employers place such value on one's bum! (York Free Press)

## feeling bitter about watneys ?

### Brighton's homeless are

These houses, in Phoenix Place, Brighton, all owned by Watney's, have had holes deliberately knocked through each roof in order to make them uninhabitable.



Not only do they deprive us of a decent drink in their innumerable tied pubs, they also stop us having somewhere to go home to afterwards...

## ASSAULT cont. from p 6.

the Stranglers. It made the woman into a pure sex object. I attempted to remove this cardboard figure from the arms of the lead singer of the Executives who was dancing with it on stage. I was punched viciously in the face and knocked back into the audience.

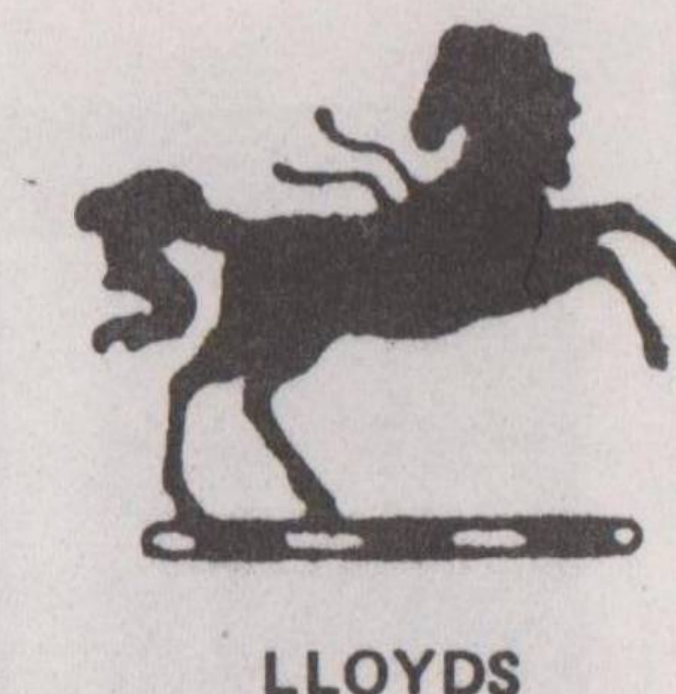
Later, he was challenged outside by a small group of women and he told me aggressively (I thought that he was going to hit me again) to read his lyrics and speak to the woman he lives with. He said he was making a parody of sexism in music and that I shouldn't have interfered. Yet again a band using parody as an excuse for sexism on stage. I was told that I have a 'on track mind', but I know-and knew on that particular occasion; that the audience does not have a sufficiently raised (collective) consciousness to interpret such behaviour as ironic. What is more, for parody to work there must be some critical perspective; that is behaviour or lyrics must be contradicted in words or gestures to indicate how it might, and should, be different.

The lead singer of the Executives has obviously some spurious notion about the sanctity of art and the untouchability of of the performer. but art is communication and even if his intention was to parody sexism it did not work and his response to criticism was violent and in no way anti-sexist. I urge all the readers of Brighton Voice to boycott any future appearances of the Executives.

J.S.



# THE



# BIG 4 BANKS

# £1,085M PROFITS IN 1978

## This Could Provide

- 25 SMALL HOSPITALS
- 100 HEALTH CENTRES
- 40,000 COUNCIL HOUSES
- 100 COMMUNITY CENTRES

Thanks to Community Action for this page

# smash capitalism!

# Letters

"A Policeman's Lot..."

Dear Voice,  
Your magazine fights prejudice in particular prejudice against homosexuals and radical minorities. Yet it itself is guilty of one particular type of prejudice... prejudice against the police. Your March issue carries a cartoon in which one copper says to another; 'I'm really into brutality man'; and many other articles talk about police brutality without any mention of the good and vital work done by the police. The minority groups that you support don't hesitate to call the police when their meetings are broken up and their members beaten up by N.F. bully boys. Of course there are some coppers who are prejudiced against minority groups and there are some who lose their cool at times; this is true of any profession. But most people who join the force do so with the desire to help people, and they don't deserve the contempt and ridicule meted out to them by magazines such as yours.

In your March issue you published an article about the armed policemen of West Germany. I know that the image of the friendly neighbourhood bobby is fast dying, and soon our own police force will follow the example of its continental counterpart and equip each of its officers

with a gun, but at present the vast majority of British bobbies defend themselves AND US with nothing more than a rubber truncheon and a brief course in judo. They are proud of this peaceful image and wish to keep it, but if we continue to slander them they will lose their self-respect and the moment when they arm themselves and accept the role of 'pigs' will come much sooner.

Yours sincerely,  
K. Maine.

Clarendon Gardens

Dear Voice,  
In Kempton there is a serious lack of open amenity space, in fact the last one is the one opposite Brighton College. The Clarendon Gardens Action Group Committee was formed with the sole intention of preserving this space for use by children and people in this area as it has been for the last six years. This is also the only site in the area with mature elm trees and which, for a minimal cost, could be preserved.

In support of our campaign we have a petition of a thousand signatures from local residents, expressing their support for our activities. It is proposed to use this site for a childrens play area and a garden for all to enjoy.

If anyone is interested in support

## ALTERNATIVE



COMICS

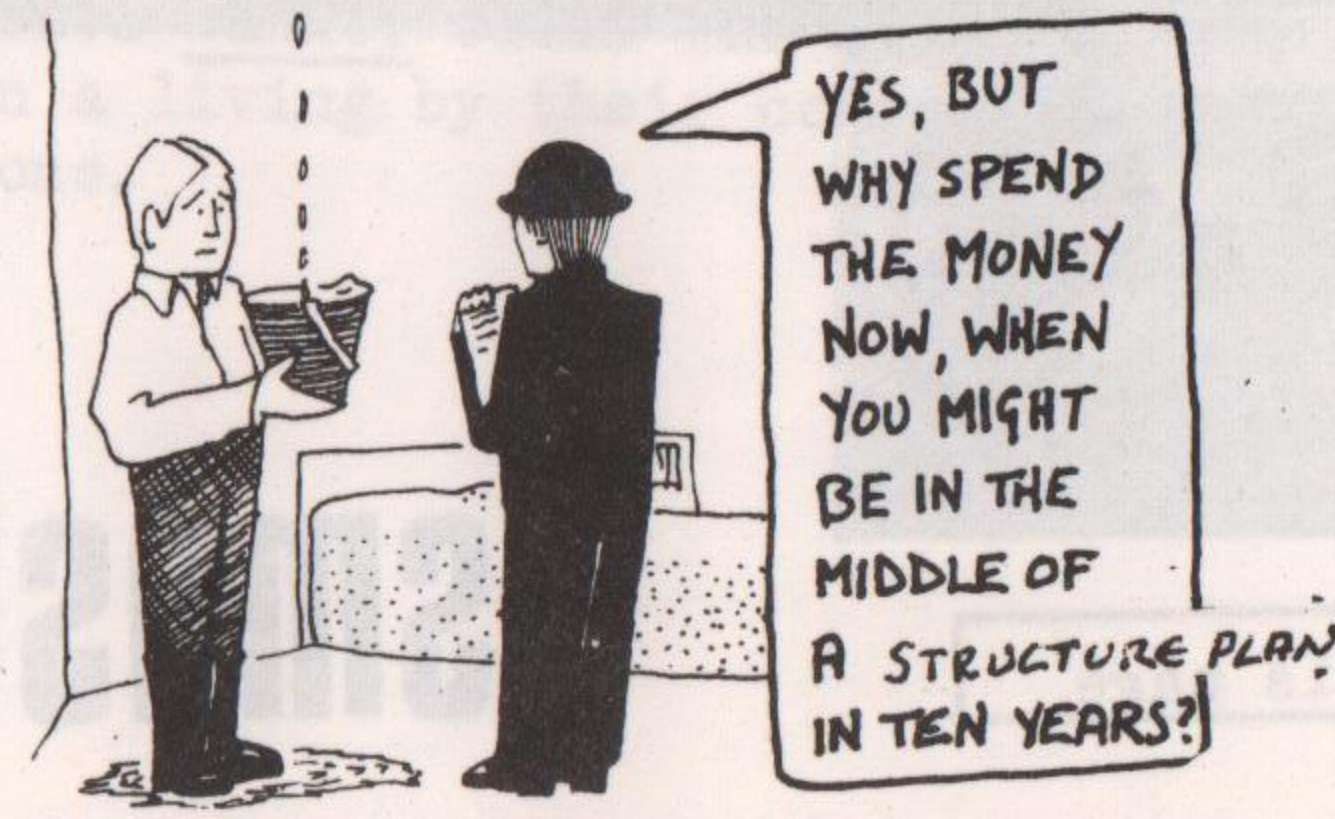
Is anyone interested in helping to start a local comic for kids that is non-racist, non sexist and FUN!  
All kinds of skills needed plus ENTHUSIASM!!  
Please contact Charlotte Muse B'ton 696897.

## George Street Continued.

life into the St James St area' - an area which is thriving without it but there you are. Some of the shops in St James St would no doubt benefit from extra trade. Brighton Car Concessionaires might even sell the occasional Ferrari on an impulse buy! But lets face it a lot of the small shops would quite simply close. And yet the Council is concerned about the financial interest of the area. So who's got a finger in the pie?

Uncertainty about the future of the area has existed for years. At least Green Elms have been forced to give up. We must fight the 'nominal commercial values' of the site so that badly needed housing develop-

ment can go ahead. If Allied Suppliers get approval for their scheme the site will once again have commercial value and that may well mark the end. Don't let the planners and the property companies have their way! Support the George St Society!



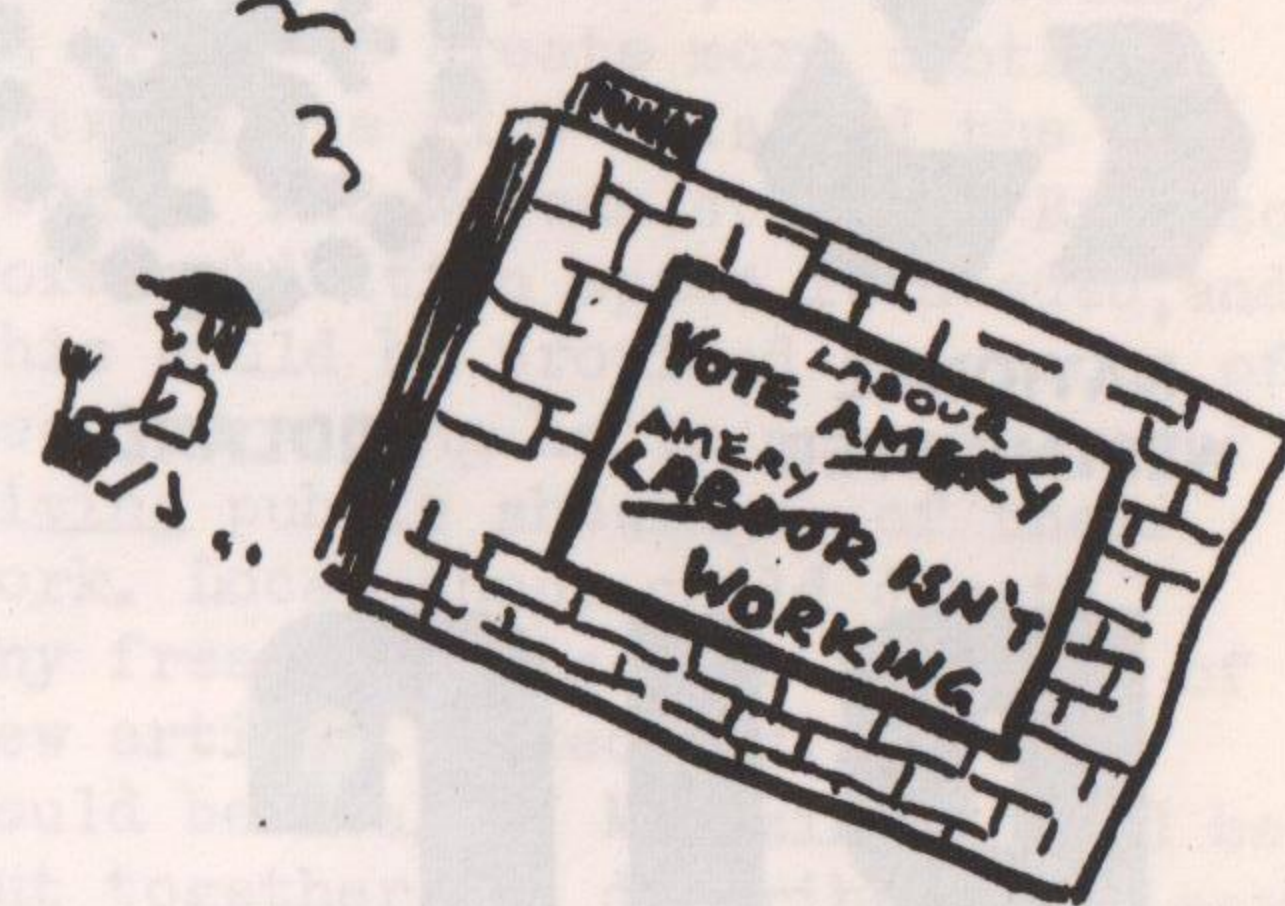
ing our project, please contact us at St. Annes Hall, St. Georges Rd, Kemptown We would be grateful for their support.

Yours sincerely  
Joanna Stapylton,  
Secretary.

## Art for the Community

Dear Brighton Voice,  
I am an artist living on the dole. I want my work to be more available, in more places, at more honest prices more of the time. I want to feel like I have a real chance of making a living by what I do best and have been trained for, by what makes me happy. I don't have any money or plan just a need to fulfill myself and a desire to contribute towards the work of others.

I'd like to see something set up in Brighton that would help artists help themselves: but in a more integrated way than exists at present, less pretentious, more simple. I'd also like to meet other people who fell similar things, perhaps we could pool ideas/resources?  
I live in the basement of 55 Tisbury Rd, Hove and my name is John Michals.



**GAY RURAL AID & INFO NETWORK** (GRAIN): Clyde Oliver, 69 North St, Lewes.  
**GAY TEACHERS:** David or Bob 733836.  
**GEORGE STREET AREA SOCIETY:** (Save George St. Campaign) Howard Alloway, 7, Steine Gdns, 693763.  
**GINGERBREAD:** Self help pressure group for one parent families Basement, 6, Marlborough Place, 774087.  
**HANOVER COMMUNITY ASSOCIATION:** Southover St., self-build community centre. 688380.  
**TWO FLIERS HOUSING CO-OP:** Collective ownership and control of housing for young single people. Contact Brenda Lewes 2029, Ray 776577, or Bob 737677.  
**HUNT SABOTEURS ASSOCIATION:** Vince Smith, 386, Portland Rd Hove, 411484.  
**INDEPENDENT LABOUR PUBLICATIONS (ILP):** (Brighton Branch). Socialist Discussion Groups, production of pamphlets, etc. For details contact G. Kent, 34 East Slope, Sussex University.  
**KINGSLIFFE CONSERVATION SOCIETY:** Ms. N. Marlow, 18, Bedford Street.  
**LESBIAN GROUP:** Jill, 696298  
**LINK UP:** Sussex University Community Action. 680380.  
**NATIONAL ABORTION CAMPAIGN:** Contact Women's Centre. N.C.C.I. See 'Advice'.  
**PROJECT ADVENTURE PLAYGROUND:** Hove. 737357, 738712 or 411565.  
**RESOURCE CENTRE:** Top of North Rd., 607141. Basic resources for the community: meeting space, duplicating, screen printing, community press, transport, directory of meeting space and much more. **RIGHT TO WORK CAMPAIGN:** 19, Elm Grove. 687848.  
**S.M.A.C.H.S.:** 132, Ladysmith Rd 602900.  
**SOCIALIST ENVIRONMENTAL RESOURCES ASSOCIATION (SERA):** Socialist solutions for a just and sustainable society. K. Beuret, 301, E. Slope, Sussex University.

**WORKERS VOICE GROUP:** based on Womens Voice paper. Sue 210660  
**WORKERS EDUCATIONAL ASSOCIATION** Stirling Smith, c/o Queen's Park Road. 680654.  
**WORKERS MUSIC ASSOCIATION:** Basement, 28, Livingstone Rd, Hove.  
**WORK HAZARDS GROUP:** Info and resources on health and safety at work. Meets every other Monday at the Resource centre. Write to 68 Compton Road or phone 686302  
**WORKING ASSOCIATION OF MOTHERS:** Linda Kinsella, 551341. Baby sitting, social events, creche etc.  
**WORKING WEEKENDS ON ORGANIC FARMS:** Don Fynches, 56, High Street, Lewes. 6286.  
**YOUNG UNEMPLOYED'S CLUB:** Weds., 11.30 - 2. Institute, Queens Square.  
**COMMUNITY TRANSPORT:** Resource Centre high-top transit and driver. Brighton 607141.  
**MERLIN:** Lewes Work Collective. Gardening, decorating, tutoring, mechanics etc. (Over forty skills). 5, Mount Place, Lewes 5234.  
**MOUSECOOMBE CHILDRENS DANCE TROUPE:** Morris dancing etc. for OAP's, children's homes, etc. B'ton 691713.  
**PURE JOY:** Whole Foods Catering Collective. 19, Hammy Way, Shoreham by Sea. S'ham 62301.  
**VARIETY WITH THE VENTURAS:** Charity concert party, OAF clubs, children's homes, etc. B'ton 737357

Newport Street, London WC2.  
**ANARCHIST COMMUNIST ASSOCIATION:** Brighton 693829.  
**BIG FLAME:** 68, Compton Road, or phone Brighton 721283, for details of meetings etc.  
**BRIGHTON ANTI-NUCLEAR GROUP:** Nick at 18, Bloomsbury Place, Kemp Town.  
**COMMUNIST PARTY G.B.:** Contact Sec: P. Goffin, 95a, St. George's Rd. (587333) meetings 1st. Wed of month at the Standford Arms, 7.45pm phone for details  
**COMMUNIST PARTY OF BRITAIN (ML):** 37 Gloucester Rd. 684404.  
**COOPERATIVE PARTY, B'ton:** 86 London Rd. 683076. Hove. J. Cattell, 29, Foredown Drive. Portslade  
**FABIAN SOCIETY:** G. Forbes, 66 Meadow Way, Burgess Hill. Tel. 963-43723  
**LABOUR PARTY:** B'ton; 179 Lewes Rd. 602592. Sec M. Hall 22 Port Hall Pl., 57704; Hove 40 Cooper St. Sec J. Cattell 29 Foredown Dr. Portslade  
**LIBERAL PARTY:** Brighton Pavilion F. His, Gordon House, 14a, Ship Street. Contact: 25315 (day) 26560 (evening). Brighton, Kemp Town; A. Frampton, 32, Brownleaf Rd., 36817. Hove & Portslade: J. McCormack, 11, Wellington Avenue, Hove, Phone 738462.  
**NEW COMMUNIST PARTY:** M. Chaplin, 83, Edburton Ave., Brighton.  
**SOCIALIST CHALLENGE:** c/o International Marxist Group, Student Union, University of Sussex.  
**SOCIALIST WORKERS' PARTY:** 19, Elm Grove, Brighton 687848.  
**YOUNG COMMUNISTS (BRIGHTON):** C. Murray, c/o 16, Waterloo St Hove, Brighton 733836.  
**YOUNG LIBERALS:** c/o Councillor D. Rogers, 8, Gullford Street, Brighton 26011.  
**YOUNG SOCIALISTS (L.P.):** Contact Brighton-P. Byrne, 64, Coleman Street or 601599.  
Hove-57, Blatchington Road. Lewes-A. Bryant, 16, Willow Walk. Newhaven 6299.

**SUNRISE RESTAURANT:** 16 North Rd. B'tn. Whole food, vegetarian. Run by Friends of the Western Buddhist Order. Mon-Thur 12-5, Fri & Sat 2-6 & 7-10pm.  
**THREE ROOMS CAFE:** 14 Blatchington Rd, Hove. Vegetarian. Mon-Sat 10-3. Tel. 779933  
**WINDHORSE BOOKSHOP:** 19 George St. B'tn. Buddhism, books. Indian clothes, gifts, candles, incense, cards. 10-5, daily.  
**WORKERS BOOKSHOP (B'tn.):** Marxist-Leninist classics & working class history. 37 Glouc. Rd. Tel. 684404. Sat. only 9-5.  
**THIS POSTER IS PUBLISHED AS PART OF BRIGHTON VOICE** Please check your entry. If we have left you out, made mistakes or the info. is no longer up to date, please let us know. This service is absolutely free, so why not use it.....?  
**BRIGHTON VOICE INFORMATION** 7 VICTORIA RD., BRIGHTON.  
**BRIGHTON VOICE** is an alternative paper produced by people living and working in the area. It aims to cover news which the commercial press, because of its political and social bias distorts. There is no editor - we are all involved in all parts of the production process. The paper is not produced for profit: we publish it because we hope you will find it interesting and useful. It is not aligned with, or funded by, any political party or grouping. The Voice depends entirely on support from its readers. If you have some spare time and would like to help in writing/production/distribution, we meet every Sunday at 8.30 pm at 7 Victoria Rd. (side entrance or phone 27878 at the same time) We support individuals and groups of people trying to take control over their own lives, and try to report things from their point of view. We hope readers will draw their own conclusions and the news will be helpful to others in the same circumstances

**CITIZENS' ADVICE BUREAU** B'ton: 17 Ditchling Rise 601664, Mon-Fri 10-4pm & Tues 6-8pm; 2 St Georges Place Mon-Fri 10-4pm & 2-4pm  
Hove: Town Hall (Tisbury Rd) 734811, Mon/Wed/Fri 10-12.30 & 12.15-4pm; Tue/Thu 10-4pm  
**COMMUNITY HEALTH COUNCIL** Advice on problems/difs. with the NHS: Btn 3824, Hove 71186  
**FAMILY PLANNING CLINIC:** 18/19 Western Rd 734258  
Lewes, Newhaven & University Health Centre - Btn 23344  
**GAY SWITCHBOARD:** Info & Advice 202930, 8-10pm every night  
**HOUSING ADVICE CENTRE (council):** 73 Grand Pde 29801, Mon-Fri 9-4.30pm  
**LABOUR WEEKLY ADVICE CENTRE:** 179 Lewes Rd, 10.30-11.30; Quinton Barry & Dave Hill, prospective parl. candidates for Kemp Town & Pavillion  
**LEGAL & WELFARE INFO DESK:** Union Hall, Air St. Sats. 10-4pm  
**LIBERARIES:** do not offer advice but have books which will inform you of your rights. Community info also available  
**NATIONAL COUNCIL FOR CIVIL LIBERTIES**  
**NATIONAL COUNCIL FOR CIVIL LIBERTIES (Sussex):** 689385 or c/o Public House Bookshop (see 'SHOPS')  
**PREGNANCY ADVISORY SERVICE (B'tn):** Pregnancy testing, counselling abortions, vasectomies: Wistons, 138 Dyke Rd, 509726  
**RENT TRIBUNAL:** rent disputes, security of tenure etc, 137 Preston Rd, 506381  
**RIGHTS CENTRE (B'tn):** Advice on legal problems. Central Free Church, Queens Sq. Tue 5.30-7.30; Thu 12.30-2, 5.30-7.30 Phone 202492  
**JAMARIANS:** For those in despair Btn 77277 (24hr); Hove 102 Clarendon Rd  
**SQUATTERS & TENANTS ADVISORY SERVICE:** Advice to the homeless & those with housing problems  
**C/C Resource Centre, North Rd**  
**WOMENS AID:** Refuge for battered women, 506325

**WOMENS VOICE GROUP:** based on Womens Voice paper. Sue 210660  
**WORKERS EDUCATIONAL ASSOCIATION** Stirling Smith, c/o Queen's Park Road. 680654.  
**WORKERS MUSIC ASSOCIATION:** Basement, 28, Livingstone Rd, Hove.  
**WORK HAZARDS GROUP:** Info and resources on health and safety at work. Meets every other Monday at the Resource centre. Write to 68 Compton Road or phone 686302  
**WORKING ASSOCIATION OF MOTHERS:** Linda Kinsella, 551341. Baby sitting, social events, creche etc.  
**WORKING WEEKENDS ON ORGANIC FARMS:** Don Fynches, 56, High Street, Lewes. 6286.  
**YOUNG UNEMPLOYED'S CLUB:** Weds., 11.30 - 2. Institute, Queens Square.  
**COMMUNITY TRANSPORT:** Resource Centre high-top transit and driver. Brighton 607141.  
**MERLIN:** Lewes Work Collective. Gardening, decorating, tutoring, mechanics etc. (Over forty skills). 5, Mount Place, Lewes 5234.  
**MOUSECOOMBE CHILDRENS DANCE TROUPE:** Morris dancing etc. for OAP's, children's homes, etc. B'ton 691713.  
**PURE JOY:** Whole Foods Catering Collective. 19, Hammy Way, Shoreham by Sea. S'ham 62301.  
**VARIETY WITH THE VENTURAS:** Charity concert party, OAF clubs, children's homes, etc. B'ton 737357



## GROUPS, CO-OPS, Etc.

**ANIMAL ACTIVISTS:** anti factory farming etc. V. Smith 386, Portland Rd. Hove 411484  
**ANOREXIC AID:** 1st Monday of month. Noreen 682054 or Penny 735362  
**BEE KEEPERS ASSOCIATION:** Brighton & Lewes Division of Sussex Beekeepers. Lyn Hawkins, 14 The Lees, Peacehaven 4522  
**BING CROSBY CLUB:** 737357 (am)  
**BRIGHTON HOSTEL:** 18 Dorset Gdns Soup run bottom West St 10 - 11 pm daily. Help needed 682089  
**BRIGHTON SOCIETY:** Environmental group. S. Montford 10, Clermont Road.  
**BUS USERS ACTION GROUP:** R. Sprigge, 7, Tivoli Rd., 562172  
**CAMPAIGN FOR HOMOSEXUAL EQUALITY:** 202930 8 - 10 pm daily.  
**CAMPAIGN FOR NUCLEAR DISARMAMENT:** 28633  
**COMMUNITY ARTS WORKSHOP:** Dance, drama, mime, music. St. Anne's Hall, St. Georges Rd. Kempdown. 697493 for dtls  
**CONFERENCE OF SOCIALIST ECONOMISTS:** K. Smith, 10 Warleigh Rd.  
**FEDERATION OF TENANTS ASSOCIATIONS (BTON):** 72, Swanborough Place.  
**FRIENDS CENTRE:** meeting Place with F.E. classes. 16, Ship Street. 27835  
**FRIENDS OF THE EARTH:** Margaret McIlroy, 32, Over St. 696425  
**FRIENDS OF THE WESTERN BUDDHIST ORDER:** Yoga, lectures etc. Beginners meditation Mon 7.15 19, George St. 693971  
**GAY CHRISTIANS:** Martin 680868  
**GAY RURAL AID & INFO NETWORK (GRAIN):** Clyde Oliver, 69 North St. Lewes.  
**GAY TEACHERS:** David or Bob 733838.  
**GEORGE STREET AREA SOCIETY:** (Save George St. Campaign) Howard Allaway, 7, Steine Gdns, 693763.  
**GINGERBREAD:** Self help pressure group for one parent families Basement, 6, Marlborough Place, 774087.  
**HANOVER COMMUNITY ASSOCIATION:** Southover St., self-build community centre. 688380.  
**TWO PIERS HOUSING CO-OP:** Collective ownership and control of housing for young single people. Contact Brenda Lewes 2029, Ray 776577, or Bob 737677.  
**HUNT SABOTEURS ASSOCIATION:** Vince Smith, 386, Portland Rd Hove. 411484.  
**INDEPENDENT LABOUR PUBLICATIONS (ILP). (BRIGHTON BRANCH).** Socialist Discussion Groups, production of pamphlets, etc. For details contact G. Kent, 34 East Slope, Sussex University  
**KINGSCLIFFE CONSERVATION SOCIETY:** Ms. N. Marlow, 18, Bedford Street.  
**LESBIAN GROUP:** Jill, 696298  
**LINK UP:** Sussex University Community Action. 680380.  
**NATIONAL ABORTION CAMPAIGN:** Contact Women's Centre. N.C.C.L: See 'Advice'.  
**PROJECT ADVENTURE PLAYGROUND:** Hove. 737357, 738712 or 411565.  
**RESOURCE CENTRE:** Top of North Rd., 607141. Basic resources for the community: meeting space, duplicating, screen printing, community press, transport, directory of meeting space and much more.  
**RIGHT TO WORK CAMPAIGN:** 19, Elm Grove. 687848.  
**S.M.A.C.H.S.:** 132, Ladysmith Rd 602900.  
**SOCIALIST ENVIRONMENTAL RESOURCES ASSOCIATION (SERA):** Socialist solutions for a just and sustainable society. K. Beuret, 301, E. Slope, Sussex University.

**SOCIETY FOR ANGLO-CHINESE UNDERSTANDING:** D. Furoi, 12, Berkeley Row, Lewes. 2414.  
**SUSSEX COUNTY SKATEBOARD ASSOC.** 737357.  
**TRADES COUNCIL:** Coordinating group of local trades unions affiliated to the TUC. Andy Durr, 235, Ditchling Rd. 505314.  
**LABOUR HISTORY PROJECT & LABOUR HISTORY PRESS:** as above.  
**TRADES & LABOUR CLUB:** Meeting place for trades unionists. 16, Lewes Rd. 601101.  
**TRANSPORT 2000:** Wilf Martin, 49, Benfield Rd., Portslade. 416105. Meetings second Tues. of month, Btn. Station. 7pm.  
**UNITED NATIONS ASSOCIATION:** Nancy Dore, 157 Surrenden Rd. 501370.  
**WEST PIER SOCIETY:** John Lloyd, 5, Belle Vue Gardens. 603705.  
**WEST HILL COMMUNITY ASSOCIATION** 21359.  
**WIDOWS CLUB:** 47, Tivoli Crescent, Dyke Rd. Meet 8pm, fourth Wednesday each month. Unitarian Hall, New Road.  
**WOMEN AGAINST FASCISM AND RACISM:** contact c/o Resource Centre.  
**WOMEN FIGHT RAPE GROUP:** Contact Women's Centre.  
**WOMENS CENTRE:** at back of Resource Centre. Open: Tue, Wed, Thur, Sat: 11 - 2 & Tue, Wed: 6.30 - 8 pm. Pregnancy tests, rights, etc. 605911.  
**WOMENS INTERNATIONAL LEAGUE FOR PEACE & FREEDOM:** 684604 and Lewes 4161.  
**WOMENS LIBERATION:** Meet Resource Centre every third Monday. For info: 605911.  
**WOMENS VOICE GROUP:** based on Womens Voice paper. Sue 21060  
**WORKERS EDUCATIONAL ASSOCIATION** Stirling Smith, Queen's Park Road. 680654.  
**WORKERS MUSIC ASSOCIATION:** Basement, 28, Livingstone Rd. Hove.  
**WORK HAZARDS GROUP:** Info and resources on health and safety at work. Meets every other Monday at the Resource centre. Write to 68 Compton Road or phone 686302

**WORKING ASSOCIATION OF MOTHERS:** Linda Kinsella, 551341. Baby sitting, social events, creche etc.  
**WORKING WEEKENDS ON ORGANIC FARMS:** Don Pynches, 56, High Street, Lewes. 6286.  
**YOUNG UNEMPLOYED'S CLUB:** Weds., 11.30 - 2. Institute, Queens Square.

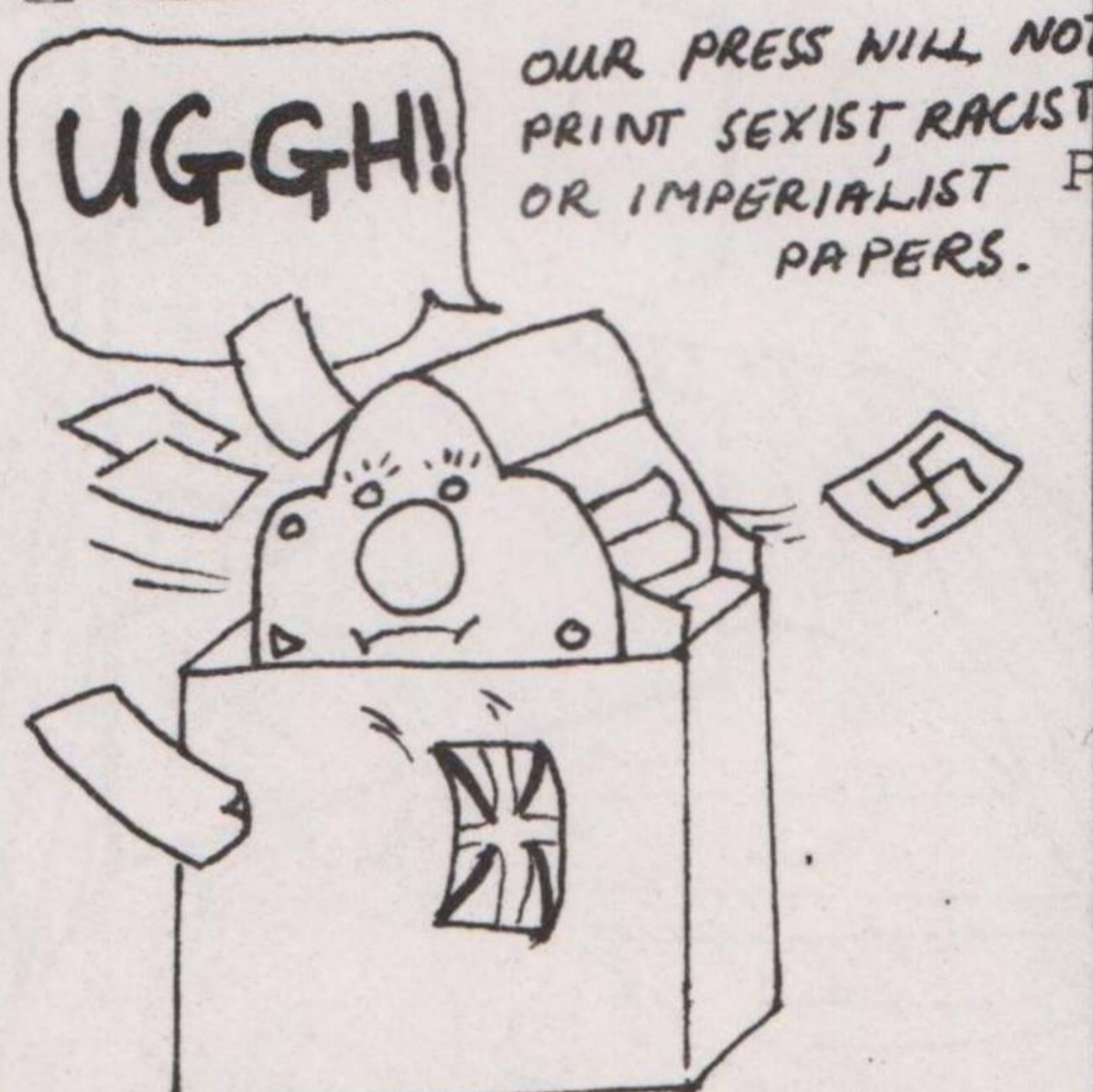
## WORK etc

**COMMUNITY TRANSPORT:** Resource Centre high-top transit and driver. Brighton 607141.  
**MERLIN:** Lewes Work Collective. Gardening, decorating, tutoring, mechanics etc. (Over forty skills). 5, Mount Place, Lewes. Lewes 5234.  
**MOULSECOMBE CHILDRENS DANCE TROUPE:** Morris dancing etc. for OAP's, children's homes, etc. B'ton 691713.  
**PURE JOY:** Whole Foods Catering Collective. 19, Hammy Way, Shoreham by Sea. S'ham 62301.  
**VARIETY WITH THE VENTURAS:** Charity concert party, OAP clubs, children's homes, etc. B'ton 737357

PLEASE SEND ARTICLES FOR THE JUNE ISSUE OF THE VOICE BY 20TH MAY.

## PAPERS

**CARF:** Paper of the ANTI-RACIST, ANTI-FASCIST CO-ORDINATING COMMITTEE: Acampaigning paper, excellent, nationwide, from Public House Bookshop, or Flat 3,5, Huntley Street, London. Bulk orders / Donations.  
**MOVING TARGET:** Brighton's film magazine, from good bkshops..  
**QUEENSPARK:** Paper for the Queens Park area; 18, Windmill street Brighton.  
**WAYBILL:** Newsheet of T&GWU, 1/402 Brighton & Hove District Busmen, from Conway Street Depot, Hove  
**WHOLE EARTH:** Alternative technology, organic living, local environmental action. 11, George St. 691318.



Printed and Published By Pendkarn Ltd. 7 Victoria Rd. Brighton

## POLITICS

**ANTI FASCIST COMMITTEE:** c/o 179, Lewes Road, Bton.  
**ANTI NAZI LEAGUE:** 12, Little Newport Street, London WC2.  
**ANARCHIST COMMUNIST ASSOCIATION:** Brighton 693829.  
**BIG FLAME:** 68, Compton Road, or phone Brighton 721283, for details of meetings etc.  
**BRIGHTON ANTI-NUCLEAR GROUP:** Nick at 18, Bloomsbury Place, Kemp Town.  
**COMMUNIST PARTY G.B.:** Contact Sec: P. Goffin, 95a, St. George's Rd. (687335) meetings 1st. Wed of month at the Stanford Arms, 7.45pm phone for details  
**COMMUNIST PARTY OF BRITAIN (ML):** 37 Gloucs. Rd. 684404  
**COOPERATIVE PARTY, B'ton:** 86 London Rd. 683076. Hove: J. Cattell, 29, Foredown Drive, Portslade  
**FABIAN SOCIETY:** G. Forbes, 66 Meadow Way, Burgess Hill. Tel. 963-43723  
**LABOUR PARTY:** B'ton; 179 Lewes Rd. 602592. Sec M. Hill 22 Port Hall Pl. 557704; Hove 40 Cowper St. Sec J. Cattell 29 Foredown Dr. Portslade. Lewes; 3, North St. Lewes, 4312  
**LIBERAL PARTY:** Brighton Pavilion F. Hix, Gordon House, 14a, Ship Street. Contact: 25315 (day) 26560 (evening). Brighton, Kemp Town.; A. Frampton, 32, Brownleaf Rd., 36817. Hove & Portslade: J. McCormack, 11, Wellington Avenue, Hove, Phone 738462.  
**NEW COMMUNIST PARTY:** M. Chaplin, 83, Edburton Ave., Brighton.  
**SOCIALIST CHALLENGE:** c/o International Marxist Group, Student Union, University of Sussex.  
**SOCIALIST WORKERS' PARTY:** 19, Elm Grove, Brighton 687848.  
**YOUNG COMMUNISTS (BRIGHTON):** C. Murray, c/o 16, Waterloo St Hove, Brighton 733838.  
**YOUNG LIBERALS:** c/o Councillor D. Rogers, 8, Guilford Street, Brighton 26011.  
**YOUNG SOCIALISTS (L.P.):** Contact Brighton-P. Byrne, 64, Coleman Street or 601559. Hove-53, Blatchington Road. Lewes-A. Bryant, 16, Willow Walk. Newhaven 6299.

## SHOPS

**ANANDA:** 19, Bond Street. Odds & ends, Indian crafts, incense, etc.  
**BRIGHTON HOSTEL SHOP:** Charity shop, 105, Islingwood Road. Open 10 - 4. Articles wanted.  
**GREENS:** Vegetarian Restaurant, 7, Victoria Road, 27878. Eves. Wed-Sat 6-10. Sun 12-3. Takeaway. Catering P'Haven 2751  
**INFINITY:** 25, North Road, 603563.  
**FOOD:** Macrobiotic/wholefood supplies. Open 9.30 - 5.00 Closed all day Wednesday.  
**BAKERY & PIE SHOP:** Open 9 - 5, except Wednesday, 9 - 5.30.  
**BULK STORE:** Bulk supplies. Open Tues. - Sat.; 9.30 - 1 & 2 - 5.  
**KEMP TOWN BOOKS:** 91, St. George's Road; Radical literature: new and second-hand books.  
**PUBLIC HOUSE BOOKSHOP:** 21 Little Preston St. 28357. Member of the Federation of Alternative Booksellers. Real books and mags, records and cassettes of ethnic and improvised music. Basement is open for continuous sessions & courses. See Whats On  
**PULSE:** Sussex Univ. wholefood cafe SCR Falmer House. Feminist collective. Mon-Fri. 12-2.  
**SAXONS VEGETARIAN RESTUARANT:** 48 George St. Btn. 680733 Mon-Sat. 11.30-5. Also Fri & Sat. 7.15-11. Bring own wine.  
**SOLSTICE BOOKSHOP:** 28 Trafalgar St. Btn. alternative books & mags. basement reading room. Tel. 692880.  
**SIMPLY SUPPLIES:** Wholefood, reading, publications etc. environmental centre. 11 George St. Btn. 691318. Mon-Sat. 9.30-5.30. Closed Thurs.  
**SUNRISE RESTUARANT:** 16 North Rd. Btn. Whole food, vegetarian. Run by Friends of the Western Buddhist Order. Mon-Thur 12-5, Fri & Sat 12-6 & 7-10pm.  
**THREE ROOMS CAFE:** 14 Blatchington Rd, Hove. Vegetarian. Mon-Sat 10-3. Tel. 779933  
**WINDHORSE BOOKSHOP:** 19 George St. Btn. Buddhism, books, Indian clothes, gifts, candles, incense, cards. 10-5. daily.  
**WORKERS BOOKSHOP (Bton.):** Marxist-Leninist classics & working class history. 37 Glouc. Rd. Tel. 684404. Sat. only 9-5.

THIS POSTER IS PUBLISHED AS PART OF BRIGHTON VOICE  
Please check your entry. If we have left you out, made mistakes or the info. is no longer up to date, please let us know. This service is absolutely free, so why not use it.....?  
**BRIGHTON VOICE INFORMATION 7 VICTORIA RD. BRIGHTON.**  
**BRIGHTON VOICE** is an alternative paper produced by people living and working in the area. It aims to cover news which the commercial press, because of its political and social bias distorts.  
There is no editor- we are all involved in all parts of the production process. The paper is not produced for profit: we publish it because we hope you will find it interesting and useful. It is not aligned with, or funded by, any political party or grouping.  
The Voice depends entirely on support from its readers. If you have some spare time and would like to help in writing/production/distribution, we meet every Sunday at 8.30 pm at 7 Victoria Rd. (side entrance) or phone 27878 at the same time.  
We support individuals and groups of people trying to take control over their own lives, and try to report things from their point of view. We hope readers will draw their own conclusions and the news will be helpful to others in the same circumstances

## ALTERNATIVE MEDICINE

**ACUPUNCTURIST:** Peter Deadman B.Ac Brighton & Lewes; Lewes 77996  
**ACUPUNCTURIST:** J.P. Scott, ALEXANDRA TECHNIQUE: S.J. Scott 33, Surrenden Crescent, Brighton 559379, Appt. only  
**HOMEOPATH:** Robert Withers, Brighton 699212, Appt. only. 79, Mill Street Falmer.  
**MASSAGE:** Introductory courses & SHIATSU; Contact Public House Bookshop, 28357, (No wankers, please).  
**SECOND SUN HEALING:** Through direct action & increased understanding. 7, Terminus Road, Brighton 29248.  
**SHIATSU:** Reflexology, Swedish massage, Bach flower remedies Marek Urbanowicz, The Palmeira Clinic; 6, Palmeira Square, Hove. Brighton 734465, Appts.

## Subscriptions £2-50 for 12

BACK ISSUES & "Region Six", Special Report available from 7, Victoria Road, Brighton 27878.

## ADVICE

**AGE CONCERN:** Old people's welfare. Mon-Fri 10-12.30 & 2-4pm 57 Ditchling Rd. B'ton 683275  
**BIT BY BIT:** Help & info (voluntary social work unit) 24hrs, 27878. Vists by app't only. Volunteers wanted.  
**CANCER PREVENTION:** (Area Health Authority) 23344  
**CITIZENS' ADVICE BUREAUX** B'ton: 17 Ditchling Rise 601664, Mon-Fri 10-4pm & Tues 6-8pm; 2 St Georges Place Mon-Fri 10-1pm & 2-4pm Hove: 'Town Hall (Tisbury Rd) 734811, Mon/Wed/Fri 10-12.30 & 12.15-4pm; Tue/Thu 10-4pm  
**COMMUNITY HEALTH COUNCIL** Advice on problems/difs. with the NHS: Btn 33824, Hove 71186  
**FAMILY PLANNING CLINIC:** 18/19 Western Rd 734258 Lewes, Newhaven & University Health Centre - Btn 23344  
**GAY SWITCHBOARD:** Info & Advice 202930, 8-10pm every night  
**HOUSING ADVICE CENTRE (council):** 73 Grand Pde 29801, Mon-Fri 9-4.30pm  
**LABOUR WEEKLY ADVICE CENTRE:** 179 Lewes Rd, 10.30-11.30; Quinton Barry & Dave Hill, prospective parl. candidates for Kemp Town & Pavilion  
**LEGAL & WELFARE INFO DESK:** Union Hall, Air St. Sats. 10-4pm  
**LIBRARIES:** do not offer advice but have books which will inform you of your rights. Community info also available  
**NATIONAL COUNCIL FOR CIVIL LIBERTIE**  
**NATIONAL COUNCIL FOR CIVIL LIBERTIES (Sussex):** 689385 or c/o Public House Bookshop (see 'SHOPS')  
**PREGNANCY ADVISORY SERVICE (Bton):** Pregnancy testing, counselling abortions, vasectomies: Wistons, 138 Dyke Rd, 509726  
**RENT TRIBUNAL:** rent disputes, security of tenure etc, 137 Preston Rd, 506381  
**RIGHTS CENTRE (Bton):** Advice on legal problems. Central Free Church, Queens Sq, Tue 5.30-7.30; Thu 12.30-2, 5.30-7.30 Phone 202492  
**SAMARITANS:** For those in despair Btn 772277 (24hr); Hove 102 Clarendon Rd  
**SQUATTERS & TENANTS ADVISORY SERVICE:** Advice to the homeless & those with housing problems C/O Resource Centre, North Rd  
**WOMENS AID:** Refuge for battered women, 506325