

Argus aids the deserving poor

Every December, the money collected in the Argus Christmas Appeal is doled out to the people the paper (and the town) ignores the rest of the year. And, to make sure they don't waste the charitable offering, Social Services staff are instructed to buy 'suitable' food rather than hand over the money - £5 per lucky family.

Last Christmas, however, social workers revolted against this hangover from the 19th. century and demanded cash instead of a few tins of fruit, a couple of jellies and a pud, all wrapped up in a seasonal Mickey Mouse carrier bag (really). The eventual compromise was £5-worth of Sainsbury's vouchers - over-stamped 'food only'...

+ + + + + Rubbish-BIM

Mr. Roy Close, Director-General of the British Institute of Management, has written to the Inland Revenue with 'a plea for the hard-pressed middle manager'. While taking a token swipe at various perks, he asks that any campaign against them should go hand in hand with large tax cuts, and admits that some members receive 'holidays, yachts, flats, furniture, clothes and even servants'.

Tea cosy - for capitalists

Devoted readers of this page (there must be one?) will remember a piece on the appalling conditions suffered by tea plantation workers and their families. The issue was raised at the end of last year at the annual general meeting of Brook Bond Leibig, one of the largest companies, when an attempt to get workers' wages raised by 15p per day was rejected as 'impracticable' by Sir Humphrey Prideaux, company chairperson. At the same time, he proposed a 500% rise in the salary paid to non-executive directors, from £1,000 to £5,000 per year (i.e. approximately £15 per day).

THIS MONTH'S



RIP-OFF

Tanks a million?

John Coyne is just an ordinary guy from Cincinnati, Ohio, USofA - except for his tank, which he bought second-hand from the army. Prosecuted for driving a vehicle without inflatable tyres, he has just won an appeal which confirms the citizen's right to do pretty well anything he likes that isn't specifically forbidden by the Constitution. I suppose it could be a great blow for civil liberties, apart from the fact he's probably a fascist.

World Development Movement supporters pointed out that their suggested rise would reduce dividends by only 0.1p per share, but Sir Humphrey told the meeting that he and his wife had just returned from a (free) trip to inspect the plantations and that 'the vast majority of children there are happy and healthy'. Furthermore, 'an increasing number of (unspecified) experts now believe that the international standard of malnutrition does not apply to children of a smaller physiognomy'. Makes you proud to be British, don't it?

Social Services joke

After a close contest, the 1979 prize for Supreme Tactlessness and Insensitivity has been awarded jointly to Denis Allen, East Sussex Director of Social Services and Julia (call me Thatcher) Cumberlege Chairthing of the Social Services Committee.

After proposing to close the Brighton Children's Homes, sack the staff and cart the kids off to Crowborough, etc. they sent each Home a Christmas card wishing them 'a merry Christmas and a happy and prosperous new year'.

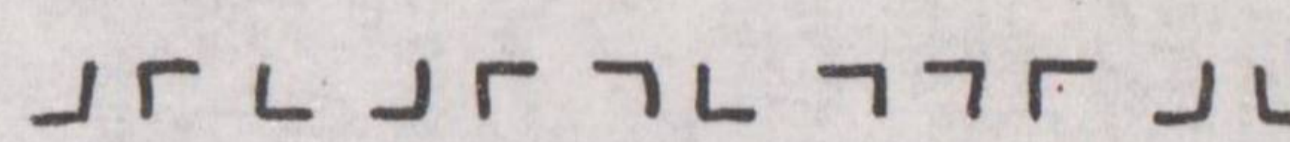


Equality in death

A sharp rise in the number of women smokers has resulted in a similar increase in cancer deaths.

Compared with 1969, 50% more women now die from cancer of the lung, trachea and bronchus - but over three times as many men kill themselves in the same way.

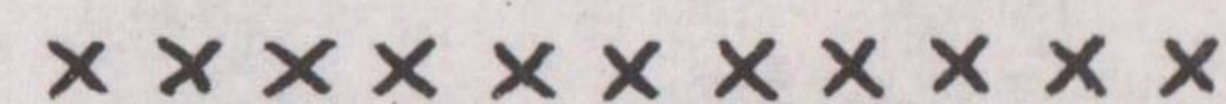
Why the hell do you do it? Presumably most of you don't want to die - much less pay capitalism vast sums to kill you when they'd be more than happy to do it free of charge. Doesn't it seem a bit stupid?



Poor results for homework

Nearly half of those working at home earn less than 40p per hour. This is revealed in a survey by the Low Pay Unit, proving conclusively how employers can people who desperately need money but can't go out to work.

The report can be obtained from 9 Poland St., London, W.1., price £1-10p.



STOP PRESS STOP PRESS STOP PRESS

Merseyside police dogs are to have a welcome rest from biting lumps out of local citizens. The recently-deceased Emma Burdekin has left £100 in her will to buy each of them a steak.....

TORY CUTS:- THE HUMAN COST

FOUR CHILDREN INJURED

The full meaning of the Torys' cuts in essential social services was felt by four Moulsecomb schoolchildren last month when they were the victims of a tragic road accident.

At lunchtime on Monday, January 21st two vehicles collided on Moulsecomb Way, one of them careering into a bus shelter where the children were standing. All four were injured and one was kept in hospital with serious leg injuries.

Yet three months ago, this accident would probably not have happened, because the lollipop lady who used to escort children across the road at this point was deemed "unnecessary" by the Tory East Sussex County Council.

In its frantic efforts to find new social services to axe, the council had sent an 'expert' to Moulsecomb to check the traffic flow. The resulting report claimed that Moulsecomb Way was "safe" for children to cross on their own, despite being a major bus-route. Accordingly, the Barons of the E.S.C.C., sitting in Lewes, chopped this crossing patrol, along with others in its area. But what had conveniently been overlooked was that the Allenwest factory, one of the major sources of traffic on the estate, was on strike at the time of the survey.

Despite having this pointed out to them, the Council refused to back down, and removed the patrol from Moulsecomb Way - a road crossed by over 300 children several times a day (making it one of the busiest school-crossings in the E.S.C.C. area). They preferred instead to spend hundreds of pounds hiring a private contractor to REMOVE zebra-crossings which protestors had painted on the roads to give the children at least some protection from the traffic.

DEATH RISK

There are no school warning-signs for drivers where the lollipop lady used to stand, and the no-parking rule which used to keep the crossing clear has now been allowed to lapse. These were clearly two major factors contributing to the accident.

But worried parents fear that even the accident will not convince the Tories that the crossing patrol is necessary; "they'll wait until a child is killed before they give us back our patrol," said one mother, "and it'll happen sooner or later."

The parents have been waging a brave and resourceful campaign since the

patrols were taken away. Apart from the painting of over a dozen unofficial zebra-crossings, they have mounted successful pickets of Moulsecomb Way, E.S.C. Council meetings and of Radio Brighton (which along with the Evening Argus and the Brighton And Hove Gazette has seemed reluctant to publish the full facts). More dramatically, unknown sympathisers of the Parents' case caused an estimated £500 of damage to the premises and vans of the non-union contractors brought in to remove the zebra-crossings (Council workmen had refused to do it) by spraying them with the words "CHILD KILLERS."

Even the local policeman was removed from the area by his superiors when they felt he was too sympathetic to the kids' case. Instead the estate is patrolled by several panda cars and even plainclothes C.I.D. So far there have been two arrests; the cases will be heard in February and will be reported in the BRIGHTON VOICE.

It is clear that the Tories are prepared to spend any amount of money for contractors, workmen and squads of police, but are not prepared to find £880 from their ample coffers to protect the lives of over 300 children. SO FAR FOUR CHILDREN HAVE PAID THE PRICE. Can we allow this callousness and blind stupidity to continue?

CHILDREN'S HOMES TO CLOSE? SEE P.8

GROUPS

AMNESTY INTERNATIONAL (BITN & HOVE GROUP) Tel. Colin or Mary 400832... ANOREXIC AID: Penny 775084...

WOMEN

LESBIAN GROUP: Jill, 696298... WILDS CLUB: 47 Tivoli Cres., Dyke Rd. Meet 8pm, fourth Wednesday each month...

BIRTH

BIRTH CENTRE (BRIGHTON): Info & support group. Pregnancy, Birth & Early Infant Child care. Yoga in Pregnancy classes and Infant Swimming classes. Contact 689194/28357

ADVICE

AGE CONCERN: Old people's welfare. Mon-Fri 10-12. 2-4pm 57 Ditchling Rd. Brighton B8275

SERVICES

ALTERNATIVE EXCHANGE SERVICE: Exchange your skills, services, labour. 682955. COMMUNITY TRANSPORT: Resource Centre high-top transit and driver. 607141...

SHOPS

ANANDA: 19, Bond Street, Odds & ends, Indian crafts, incense, etc. INFINITY: 25, North Rd. 603563...

ALTERNATIVE MEDICINE

ACUPUNCTURIST: Peter Deadman B.Ac. B'tn & Lewes; Lewes 77996... ALEXANDRA TECHNIQUE: S.J. Scott 33, Surrenden Crescent...

WORKING WEEKENDS ON ORGANIC FARMS

WORKING WEEKENDS ON ORGANIC FARMS: Don Pynches, 19 Bradford Rd. Lewes 6286

PAPERS

QUEENSPARK: Paper for the Queens Park area; 18 Windmill St., B'ton. WAYBILL: Newsheet of TAGWU, 1/402 B'ton & Hove District...

SAXONS VEGETARIAN RESTAURANT

SAXONS VEGETARIAN RESTAURANT: 48, George Street Btn. 680733 Mon-Sat. 11.30 - 5 also Fri & Sat. 7.15 - 11. Bring own wine.

Subscriptions £2-50 for 12

BACK ISSUES & "REGION SIX" Special Report are available from BRIGHTON VOICE c/o Public House Bookshop 21 Little Preston St. Brighton.

See

of the B.M.A. and the Royal College of Obstreticians. Benyon's amendment proposes that the Secretary of State should be able to lower the time-limit even further 'by statutory instrument' - i.e. without a new bill being drafted and the opportunity to challenge it.

See

The time limit for abortion, now at 28 weeks, will be cut to 20 weeks, a proposal which gained the opposition

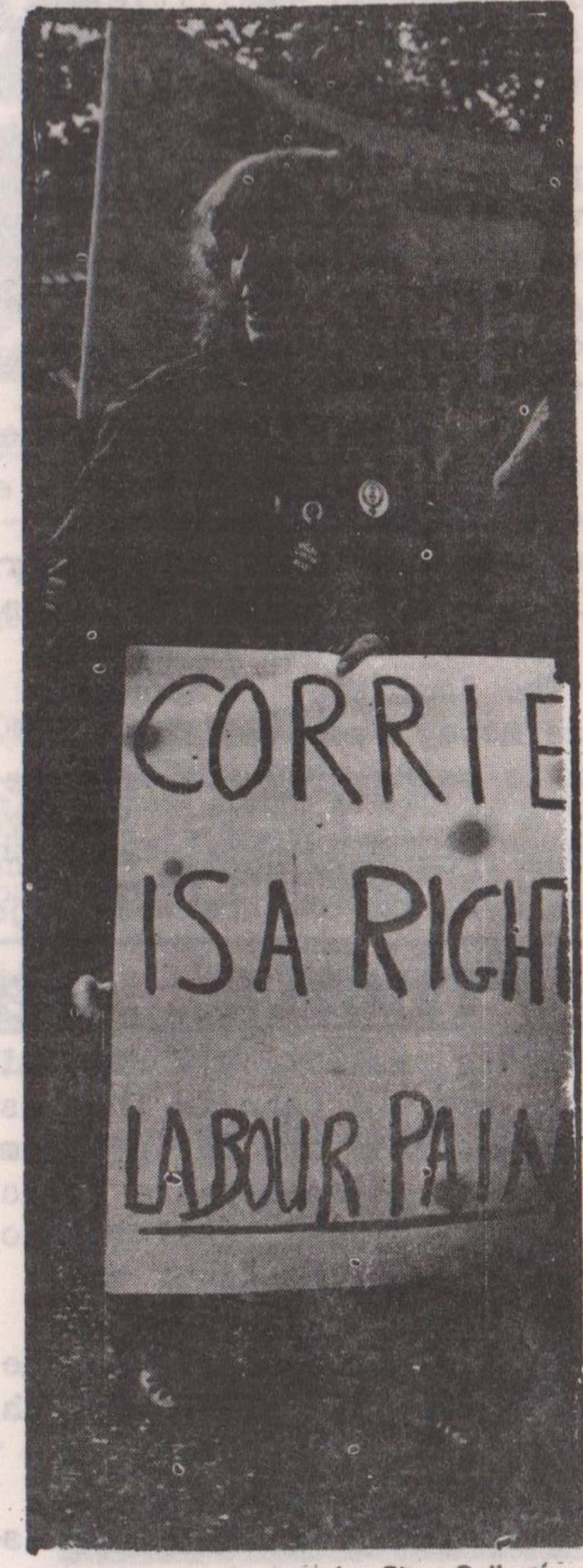
Defend the 1967 Abortion Act

Sisters we are singing We must choose Brothers join us singing We must choose For ten thousand years We must choose We have born our kids in fear We must choose

45 We Must Choose

As a chant. The solo singer takes every other line, improvising around this skeletal tune, with the crowd/chorus replying in between. Musical notation for 'We Must Choose'.

We'll not be shouted down or cheated We must choose We'll see this Benyon* Bill defeated We must choose Enough of fears and sorrow We must choose We'll build a better world tomorrow We must choose



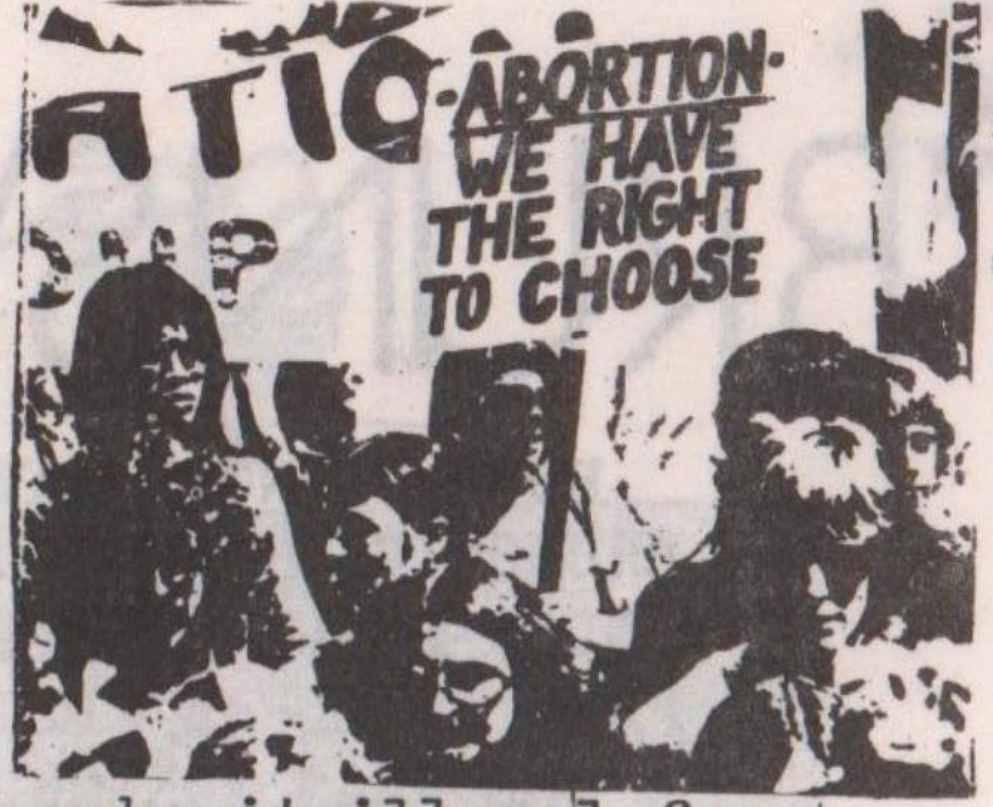
Union Place Collective

Women under attack

No Return to the Backstreets!

- LOCAL AND NATIONAL EVENTS 1. 1st Feb. Dusk to Dawn Vigil in memory of all the women who have died from back street abortions. 4pm - 4am War Memorial, Old Steine.

the Bill would make it illegal for the staff of referral agencies to have any association with the clinics. Family planning doctors could not work in abortion clinics, no one who had worked in an abortion unit could take any job working with pregnant women, the BPA's counselling service, which is aimed at discovering the real wishes of patients, would have to cease.



BRUNSWICK'S FUTURE

HOVE COUNCIL HAVE ALMOST FINALISED THEIR PLANS FOR THE FUTURE OF BRUNSWICK TOWN. CRITICISMS OF THE DRAFT PLAN WERE HEARD ON 17TH JAN, AND A PUBLIC INQUIRY, THE LAST CHANCE TO VOICE OBJECTIONS TO THE PLAN, WILL BE HELD IN THE WEEK BEGINNING 25TH FEB.

THE PLAN ACKNOWLEDGES THE NEED FOR HOUSING IMPROVEMENTS, BETTER SOCIAL FACILITIES, AND MORE AMENITIES FOR THE OLD AND DISABLED. GENERALLY IT AIMS TO PRESERVE EXISTING PATTERNS OF LAND USE AND PROPERTY OWNERSHIP, WITH MINOR ADJUSTMENTS IN LOCATION OF HOUSING, INDUSTRY, AND COMMERCE.

To meet the needs of the largest migrant group into the area, the 15-24 age group, many of whom are single, the plan encourages the purchase of properties by registered housing associations and co-ops, for conversion into communal housing.

The Council intends to see the return of vacant property (10% of total) to residential use, but is reluctant to use compulsory purchase powers. Maximum Improvement Grants, implemented with "as much flexibility as possible", will be available, but they can only be granted for self-contained units, not shared accommodation, for which only Special Grants for the addition of missing amenities are available.

So grants cannot be guaranteed for much of the property in the area. And the plan acknowledges a conflict of interests between the Borough Housing Dept, which aims at high levels of improvement, and the Borough Environmental Health and Planning Dept, which is concerned with minimum standards.

HOUSING

A limited amount of change from residential use will be allowed, and conversion is preferred to re-development, as a way of maintaining and increasing the housing stock. The costs of conversion work present a problem, since Building Societies do not normally lend for conversions, or for work on shared accommodation. Rather than provide Council mortgages, the Council is discussing with the Building Societies the possibility of a change in their lending policies. No Council action is proposed to ensure low prices and rents.

The Lansdowne Centre is the only community centre in the area. A Youth Club, a playgroup, the Brunswick Action Group Advice Centre, and groups of pensioners, single-parent families, and mothers, all use its facilities. The plan notes that the centre is unable to meet local needs, and there is a commitment to look for a new site or sites.

The second commitment is to open an information centre/cafe in the centre of the area, mainly for old people. It will open for a trial period of 6 months, staffed by voluntary groups under the supervision of Hove Social Services; it is hoped that it can be financed by an Urban Aid Grant.

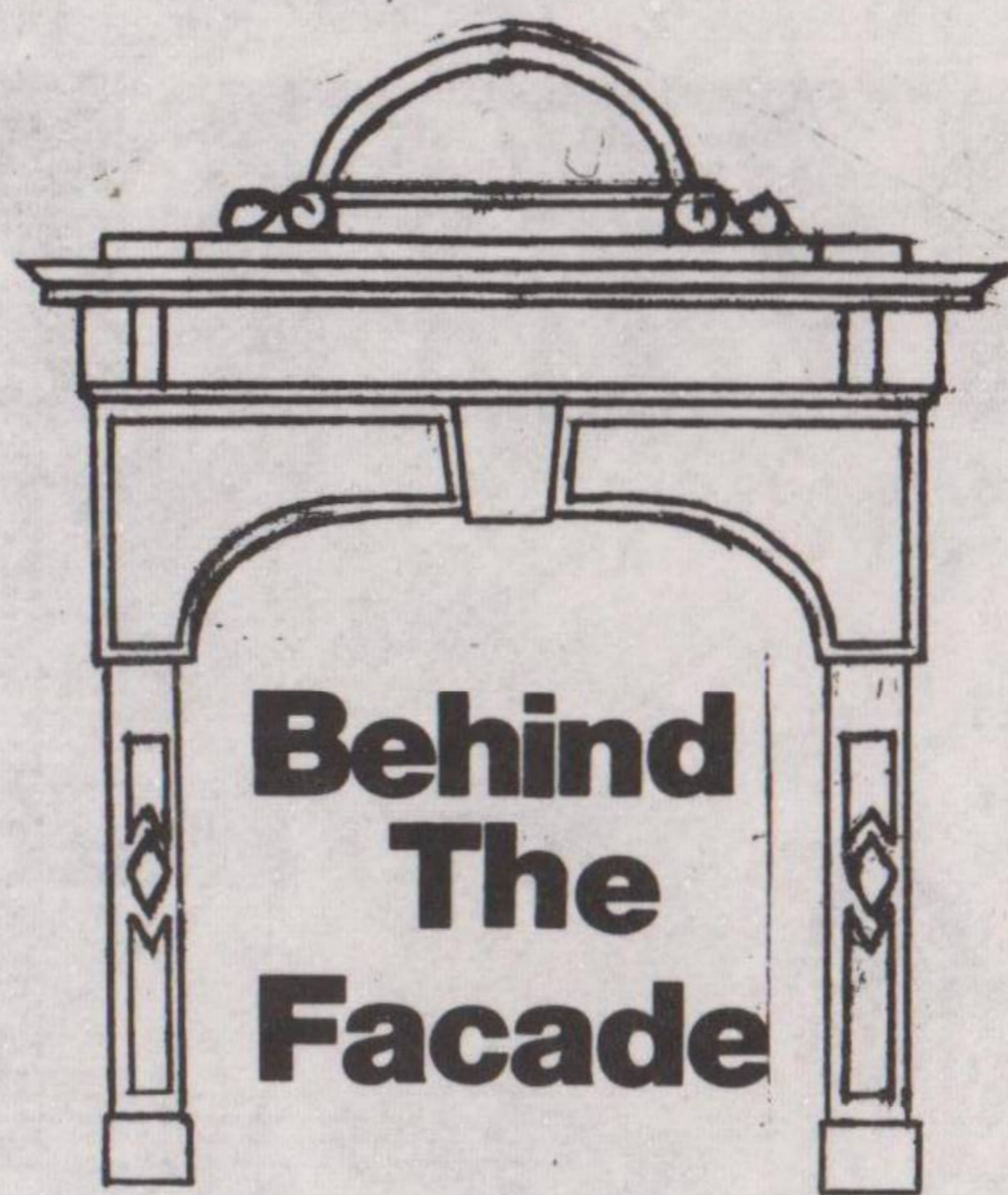


The Lansdowne Centre is vital to the plan's social facilities policies. It is leased by East Sussex County Council Education Dept, who threatened to close it in September, to save £12,000pa. They were persuaded to keep it open by Hove Council, and settled for saving money by moving the warden to another job, leaving his job vacant.

The caretaker's retirement in the summer will mean more problems for users, and the Education Committee will reconsider the closure option when the lease comes up for renewal later this year. The Committee is annoyed because money budgeted for education is being used for what is mainly a social facility. Last year an offer from Hove Social Services to take over the centre was rejected.

In Private Landlord's Hands

Brunswick's problems are not unique, only more extreme than in the rest of the town. They are the problems caused when a laissez-faire Council allows profit-minded landlords to exploit the basic needs of the young, the old, and all those who cannot, or will not, compete in the private sector. The plan notes that Market Forces have not been able to ensure adequate maintenance of listed properties. It's not surprising; the lower the maintenance costs, the higher the profits.



Brunswick's population is 6,000 of which 37% are pensioners. 2,000 people live alone.

The total housing stock is just under 4,000 dwelling, with a density of over 110 per hectare, compared with less than 50 anywhere else in the Boro. Many of these comprise only 1 or 2 rooms. 12% are vacant. Almost all dwellings are privately rented.

Over 40% of dwellings lack one or more of the three basic amenities.

30% of children are in one-parent families

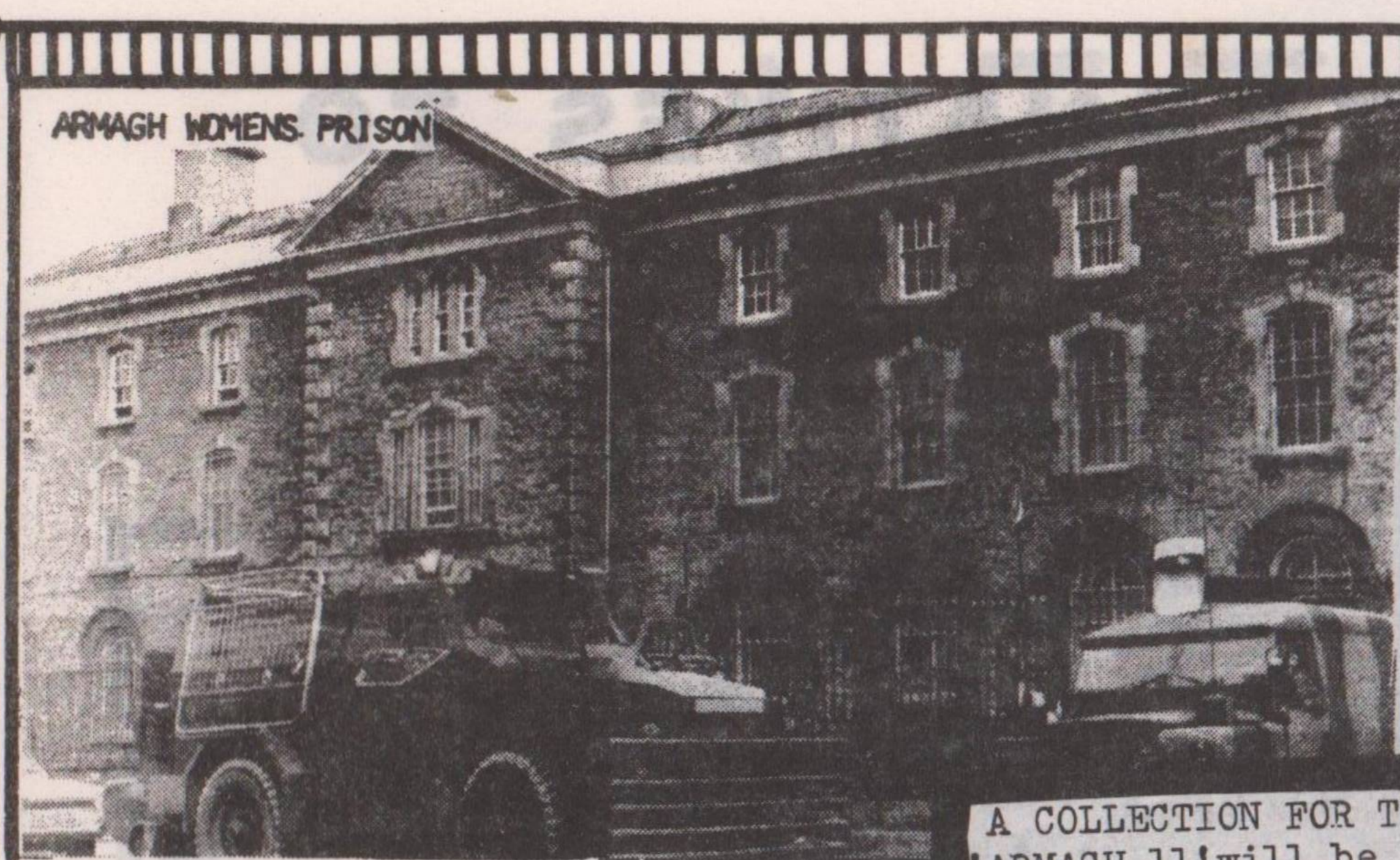
The Unemployment rate is over 17%



Offices and shops (62% of total) far outnumber other employers, mainly hotels and light industry, which is in decline. 1,500 people are employed in the area. Over 75% do not live in Brunswick.



And this doesn't just apply to listed properties. The Council should be intervening to guarantee low rents, high standards, and adequate facilities. They should be handing out mortgages and buying property. There are too many petty rivalries between Council Depts who don't give a damn about the people they're meant to serve. It's time they started doing their job properly. But then a lot of them have too many private interests to look after first.



A COLLECTION FOR THE 'ARMAGH 11' will be taken on 20th...or, please write:

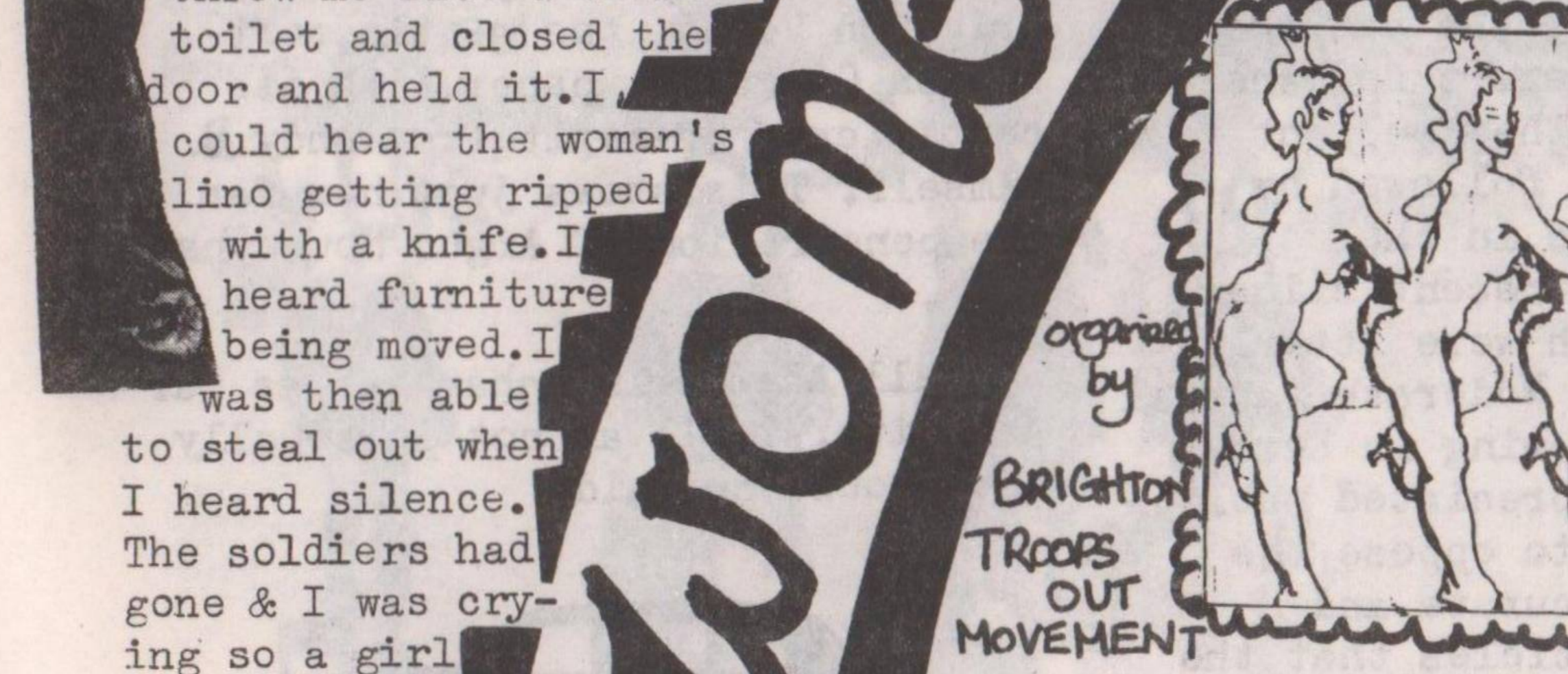
"locked up for 21 hours a day...no education, handicraft work...one 30 minute visit with our families per month (6 hours a year)...letters infrequent and censored...no food parcels, so all losing weight...catching infections from dirt and filth in bathrooms, toilets, sinks...overpowering stench...beatings from the screws...as well as the generally bad medical conditions: Valium is prescribed for everything from major skin burns to a breast abscess...one woman prisoner had to have 4 guards present, when she gave birth by caesarian section to a daughter...

These are the conditions suffered by the 37 women in Armagh Gaol, Northern Ireland who are protesting for political status - to be treated as political prisoners, and not as criminals, as they have been locked up because of their direct involvement in the fight against British Imperialism - against the British army's presence in the North of Ireland. As Women against Imperialism (Belfast) put it: "IRISH WOMEN, treated as second class citizens anyway, are treated as less than human beings in gaol!" (Nov. 10th, 1979).

"defiantly MILITANT"
Protesting POW's in 'B' Wing, Armagh Gaol, have described the changing role of women in the struggle as the war continues: "One would almost think that they had drawn up a strategy of resistance, first passive, then obstructive, and then finally, defiantly militant. We feel that women everywhere who fight for equality and liberation are bonded to us in a spirit of solidarity!"

The BRITISH ARMY: Keeping the peace in Northern Ireland
"I was playing a wee house with Ann - and Deirdre in Ardmonagh Garden Flats on Friday 18th March. The Brits came running up the stairs and started kicking the doors down. They caught hold of me, threw me downstairs... then they brought me back to a flat..."

One yelled in my face, a tall one with glasses, "Do you know who lives here?" I said, "No!" He said, "You're a liar!" He then asked me to give my name and address and I wouldn't give it for I was frightened. He then grabbed me by the jumper and threw me into a women's toilet and closed the door and held it. I could hear the woman's lino getting ripped with a knife. I heard furniture being moved. I was then able to steal out when I heard silence. The soldiers had gone & I was crying so a girl brought me down to my mammy!"



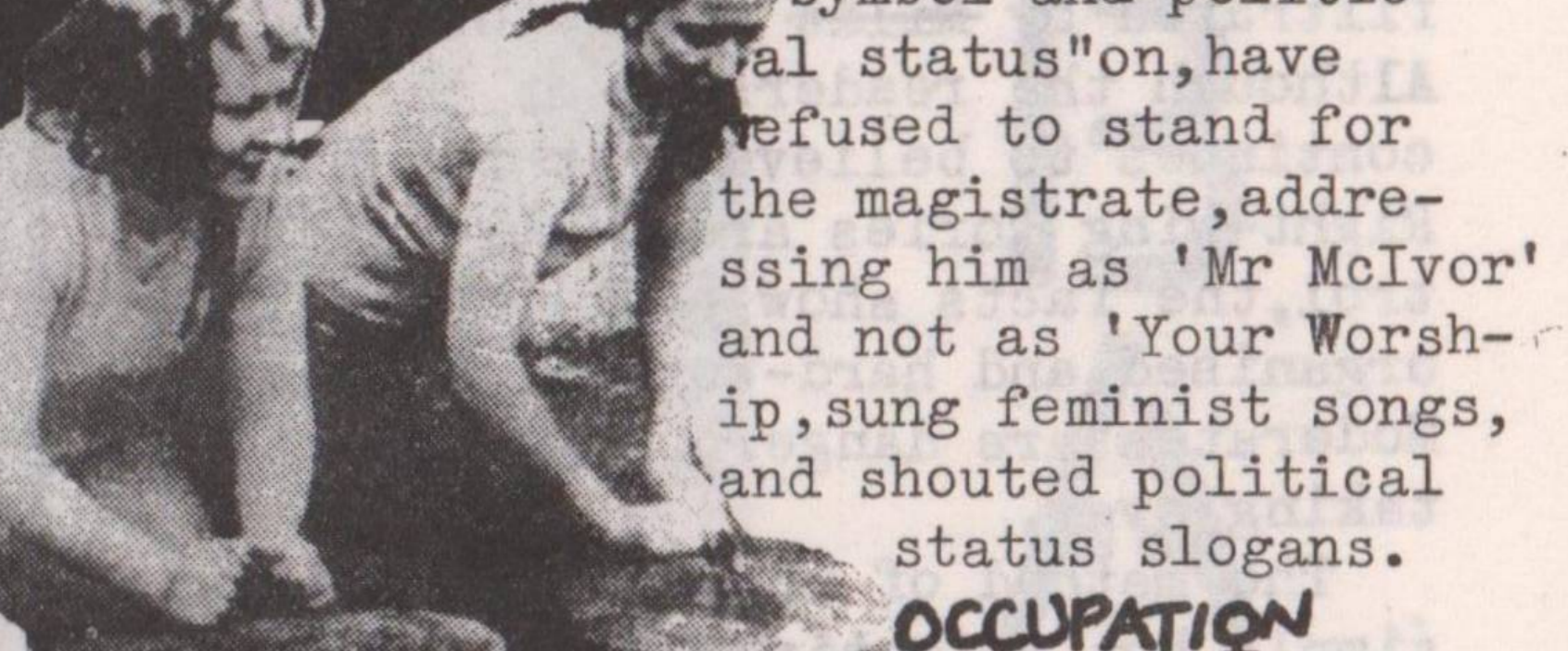
A must for all those who think that Military Intelligence is a contradiction in terms!..

ARMAGH 11

On INTERNATIONAL WOMEN'S DAY, last year, in solidarity with the women prisoners, there was a successful picket of Armagh Gaol. This peaceful picket was attacked by the Royal Ulster Constabulary (RUC) and the "Armagh 11" were arrested. These 11 women face 23 charges of "assaulting" the RUC.

Their case still hasn't been settled, after 2 hearings, and so money is badly needed for the campaign, organizing creches, etc...and childcare should land in gaol.

Women against Imperialism, c/o 52, Broadway, Belfast 12....thanks. In court, the women, wearing T-shirts with a feminist symbol and "political status" on, have refused to stand for the magistrate, addressing him as 'Mr McIvor' and not as 'Your Worship', sung feminist songs, and shouted political status slogans.



On Jan. 2nd, & another adjournment, the women and 50 supporters (from as far as Dublin & England) occupied the court-room for 15 mins forcing magistrate etc, to retreat, to the sounds of 'The Army is marching' & political status slogans. They then marched to the prison, chanting and exchanging greetings with prisoners.

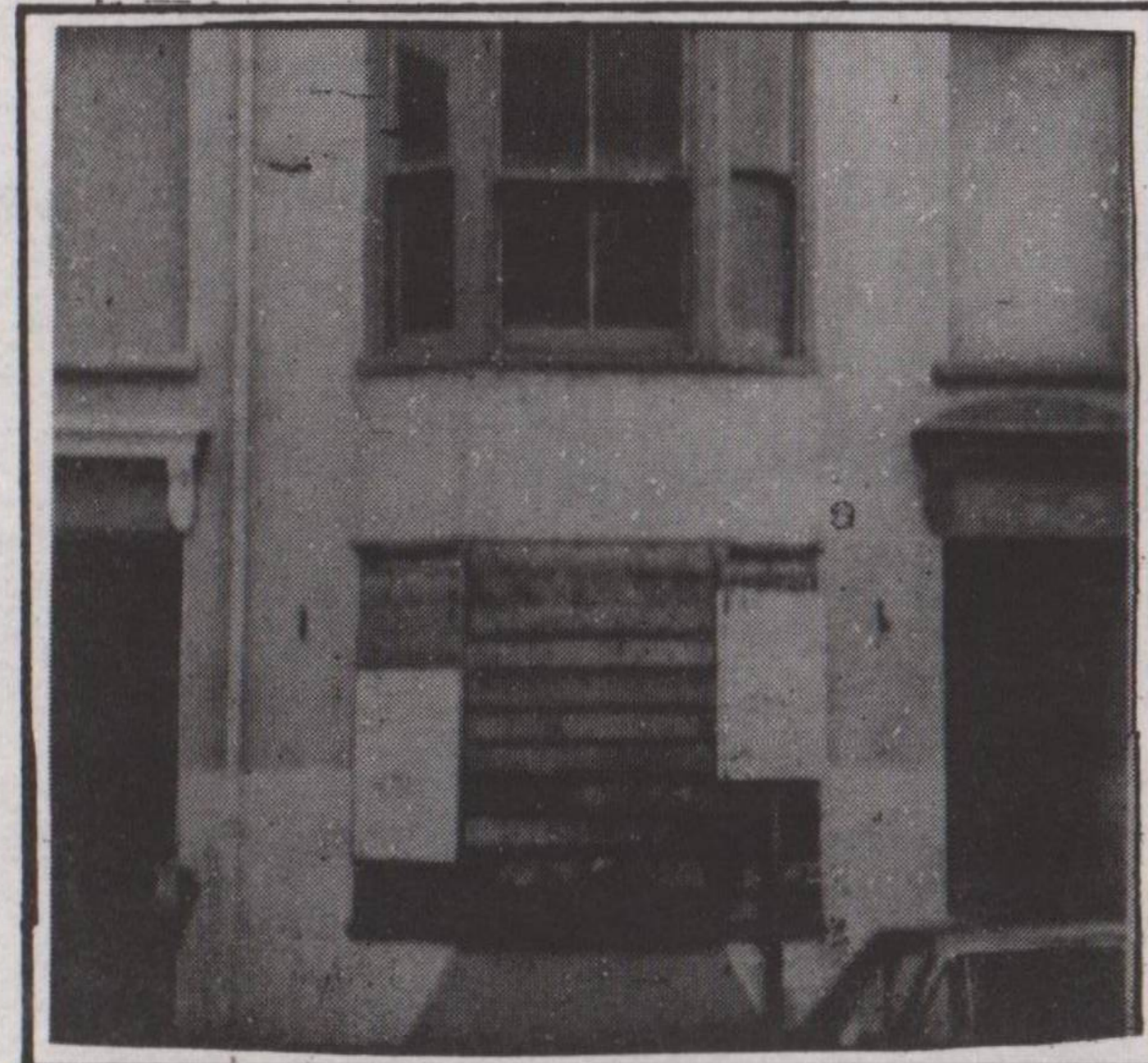
This year's Socialist Feminist conference, to be held in the Autumn, is to be on Women & Imperialism...in Brighton, a Q and Imperialism Group is being started. Please contact Brighton Women's Centre for details (605911).

WOMEN CAMOUFLAGED

*** CAMOUFLAGE ***
IS AN ALL-WOMEN THEATRE GROUP:
... "The 1980 Spit and Polish Girly Show" ...
SHOWS THE BRITISH ARMY IN ALL THE DIFFERENT AREAS IT OPERATES IN, AND HOW THESE RELATE ... Ireland/Nato/Strikebreaking etc.... OR ... as they put it:
It's 1980:
And from the Rhine to the Rock of Gibraltar From Derry to Cyprus to Hong Kong Hearty British Army lads have gathered To show that England's greatness lingers on See them SPIT on the myth that the British are finished And POLISH up the image of an Empire in decline From the Rock of Gibraltar to the Rhine..."

organised by BRIGHTON TROOPS OUT MOVEMENT

at 8pm
WOMEN and MEN WELCOME



ARGUS INFILTRATED BY THE GLADS

Following the Argus exposé of the Militants on Monday 28 Jan...

It is difficult to say when it began, but there is now no doubt that the Argus has been successfully infiltrated by ~~Will~~ Moderates. Although the readership of the Argus continues to believe that the Extreme Right-wing Tories are still in control, the facts show that the well-organised and hard-working band of Moderates are dangerously close to taking over.

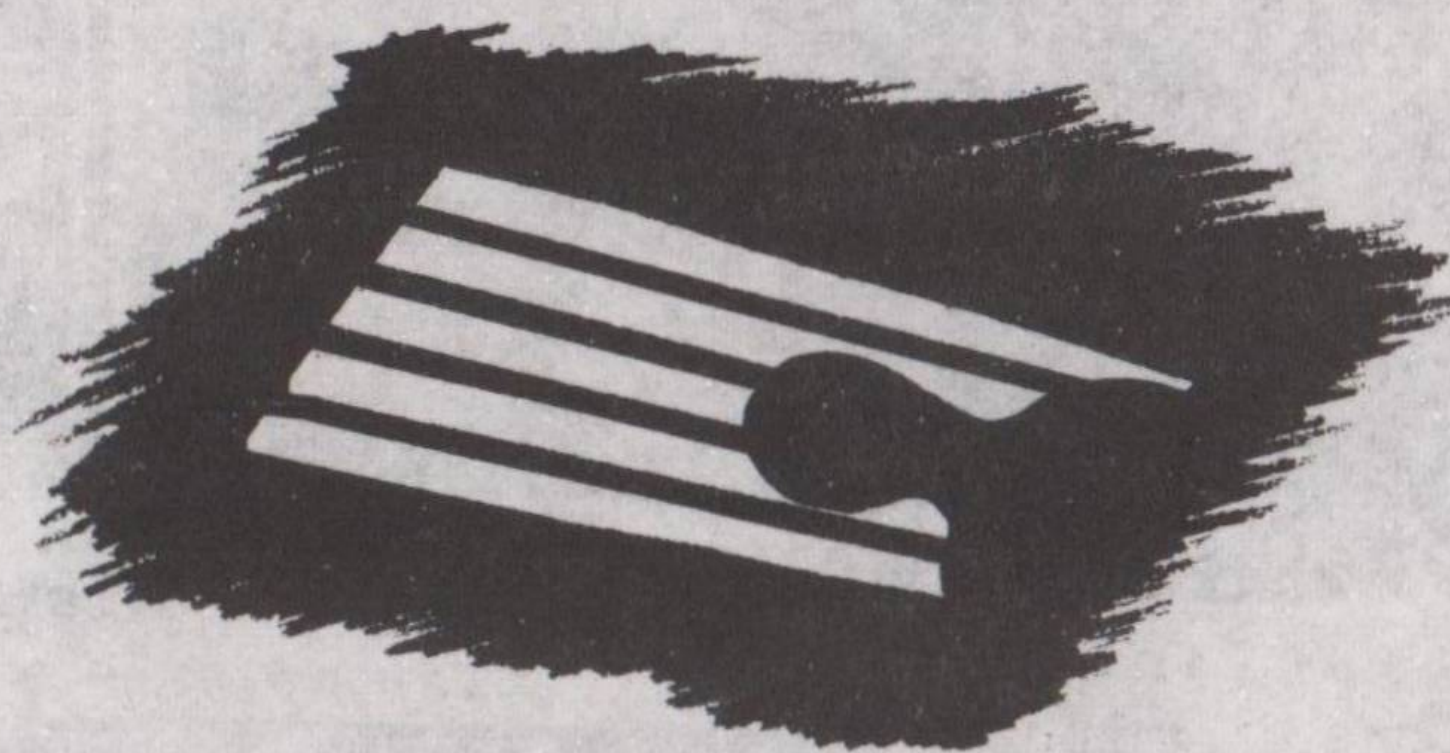
The method of the Moderates is simple but effective. They pick on departments within the Argus where the meetings are poorly attended and where the Tory Editor is too old to do more than the routine business of management. These old stalwarts are happy to see younger people taking an interest and innocently give way to the well-drilled campaign of the Moderates. As one old Tory said to us 'They come to the meetings with prepared articles of extreme dullness and Moderation which they read out in a boring monotone. The same happens in each department. It is very, well coordinated.'

What do the Moderates stand for? They take their inspiration from Will Gladstone who lived over a 100 years ago and was later found dead, in bed. They do not advocate action but depend on reason to gain their dangerously Moderate ends.

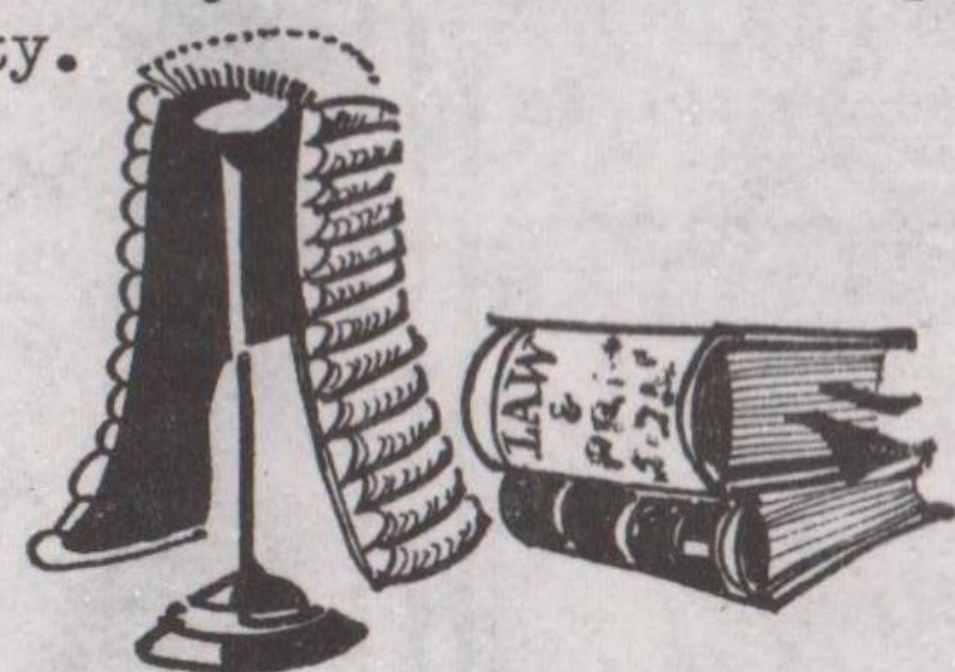
The man at the centre of the Moderate conspiracy is little known Adam Trimmingham, who, at first glance does not seem to be a man of moderation with his two cats and his wife Elaine, who, as it happens, is editorial assistant to the Gazette. Adam admits that he has only recently become a dedicated Moderate. 'In the last years of the 1960s I was an unconscious Moderate. I come from Uxbridge where there is a strong Moderate tradition in the Church Youth Clubs and Rotary Societies. But 1970 was a turning point when our successful campaign to get the Moderate Edward Heath elected, and the local success of extreme Moderate Andy Bowden in Kempton, confirmed me in my opposition to the prejudiced propaganda of the Argus.'

'But,' he continued, 'I did not leave the paper but, unlike most other moderate and sensible groups of the Centre, stayed inside it. I work really hard at the day-to-day tasks of the paper, selling

ALTERNATIVES TO PRISON



A Brighton based group is trying to overcome some of the deficiencies of our prison system. They feel that prison is a totally alienating experience, an endless bureaucratic process which isolates 'criminals' from personal contact, making them less and less capable of coping with everyday life in the outside world. They say it breaks up families, because it puts intolerable strain on the wives, husbands and children of inmates. It drives alcoholics and the mentally ill further downwards. It gnaws away the individual's personality.

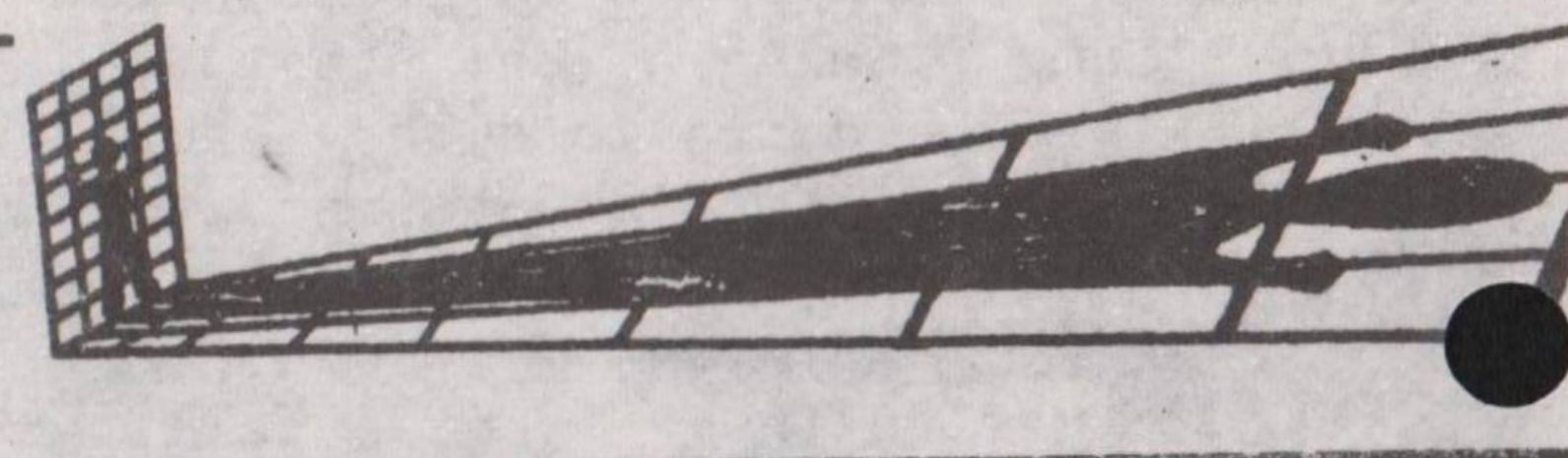


The BRIGHTON ALTERNATIVE TO PRISON PROJECT, formed 6 months ago, aim to give prisoners the kind of informal support which the system deprives them of. The group stresses the importance of ordinary friendship and company, and the establishment of caring relationships. It

also provides practical help through literacy and numeracy classes, employment counselling, weekly meetings of gamblers Anonymous and advice with drinking problems.

The group is backed up by an advisory committee of experts from the fields of housing, law and the social services. The B.A.P.P. hopes soon to open a visitors centre, run by the prisoner's families in conjunction with local probation and welfare services. The centre will be a source of information and mutual support for prisoners.

With the constant rise in the prison population the need for groups like B.A.P.P. will increase. The continuation of their work is dependent on volunteers coming forward. If you are interested in their work, further information can be obtained from; B.A.P.P. Room 1, The Institute, Central Free Church, Queens Square, Brighton. Tel. 25998. Mon, Wed, Thur, 3.30 - 6 pm. Tues. 9.30 am - 12.30 pm.



raffle tickets and spreading our message into such Moderate papers as the Observer.'

This is the man with the soft-spoken voice and the diffident manner who will go to the extremes of Moderation. His report for the Observer, for which the fee went into Moderate funds, followed by his full page article in the Argus, have been the recent climax of his campaign. Both were utterly boring, cautious and Moderate factual accounts of the Left-wing in Kempton, giving much appreciated publicity to those trying to oppose the Thatcher cuts. So accurate and helpful were these articles that the Labour movement in Kempton fears being 'Trimmed' after he has taken

over the Argus.

The threat is not an idle one. The Moderates have already undermined the sleeping partner of the Argus, the Brighton and Hove Gazette, whose best front-page stories are regularly taken from Brighton Voice, the gentle, soft-spoken Community paper with its certificate of merit from Andy B. himself. This shows just how far the penetration of Argus House has gone.

Will Adam Trimmingham get as far as Editor? 'I am not personally ambitious' he said.



NATURAL & NORMAL

First the Evening Argus and now the Mid-Sussex Times have been having a field day this year with written attacks on gay people and the ensuing correspondence. Apart from the obligatory quotes from the gospels, you can be pretty sure that two little words will enter into the arguments of non-gay people who feel uneasy or positively hostile to moves towards acceptance. These two overused, misused but almost magical words are 'natural' and 'normal'. They are thrown about with wild abandon and most often by those who seem to have little understanding of what the words actually mean. By some curious slight of hand, 'natural' and 'normal' is translated into monogamous, conventional heterosexuality, preferably in the missionary position, preferably married. Gay sexuality is then, by definition, UN-normal and UN-natural. But where do we get these concepts with such certainty?



natural

For natural we should, of course, turn to nature. So, on to the birds and bees. And what a good example the bees set us. M.W. (moral watchdog) would be overjoyed, if we emulated the busy, industrious, humble, bumble bee. After all the majority of the hive are asexual. What a pity if they were to waste any of their honey-productive time in carnal pleasure. No, that sort of nastiness is handed over to the Queen bee who gets it all over with in one glorious mating flight. No need after that for nasty degrading sex, once in a life time is quite sufficient. And its so natural!

But perhaps we ought to look at the birds. They have been studied in depth because of their intense pair bonds. A Californian seagulls study showed that in a lot of nests the eggs never seemed to hatch. Turns out that the two birds cuddling and cooing together in these situations were both females. Lesbian seagulls! It rocked the N.S.P.B. to it very roots - but not half as much as it must have shaken M.W.

We'd better skip over elephants, Rhino and Baboons also. Studies in the wild have shown that these species often form same-sex relationships. The main difference with our situation seems to

be that these individuals are not attacked or isolated by their fellow creatures but are left alone to be natural in their own way while others of different inclination get on with propagating the species.

The sexual behaviour of the animal kingdom is incredibly varied, ranging from the deadly mating of some spiders to the exuberant courtship of whales, the lifelong monogamy of swans, the harems of promiscuous bull sealions. It seems a little superfluous to go into the sex-lives of the whole animal kingdom but it does serve to illustrate the misuse of the term 'natural' to justify our own particular customs, and even our prejudices. But of course you can't win when you confront the moral watchdogs with the variety of behaviour in nature, including 'naturally-occurring' homosexuality. "Oh, well," they say, "if you want to behave like animals...!"

normal

The word 'normal' has been similarly abused. Basically, it means a sort of average behaviour, within the whole range of possibilities - but it has been twisted to mean the minimum acceptable behaviour to those who decide the conditions of what is and is not to be approved of. Few people could deny that a large number of people, perhaps the majority,

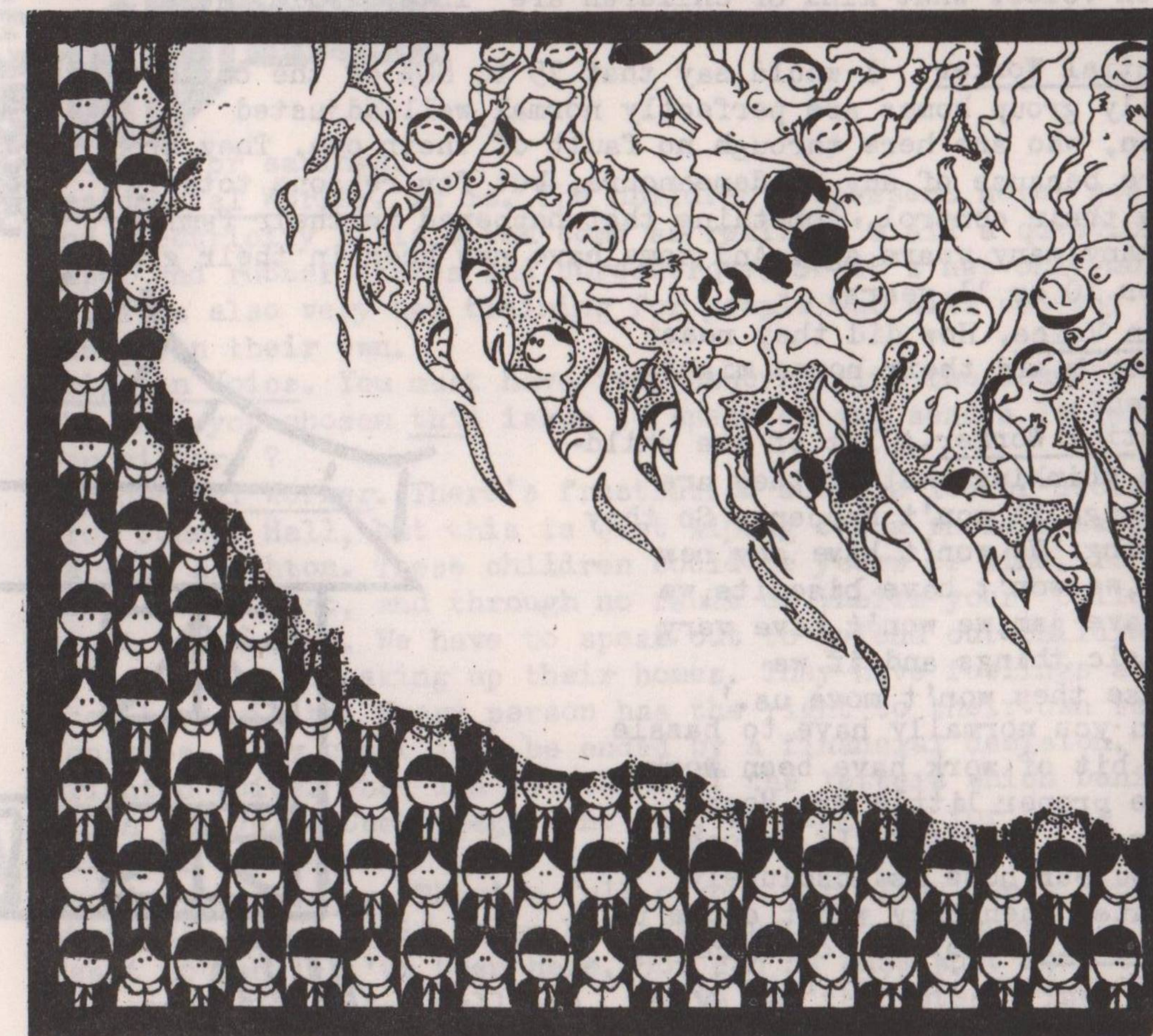
do not fulfill all of these conditions which form the basis of our concept of 'normality'. Not only that, but in attempting to restrict the human urge to introduce variety into sexual behaviour, different cultures have set very different models of what is 'normal' and this tends to make the general concept somewhat ridiculous. It is so tied in with prevailing and changing social attitudes specific for each culture that it is clearly a social construct with a purpose one needs to question. In Rome, for example, it was considered perfectly normal at one time to throw Christians to the lions. In Britain, public executions were quite normal until comparatively recently. Is 'normal' necessarily right for everyone?

ab-normal

The concept of normality also has the effect of declaring a great many people 'abnormal' and making sure they suffer for it. This isn't just gay people, it includes unmarried couples, illegitimate children and women who refuse to accept the extremely oppressive and stultifying feminine role. At one time left-handed people were considered 'abnormal' and forced to change. But trying to get everyone to conform to one single type of behaviour is neither possible

THE PRAIRIE FIRE

Cont. P.12



VOICE INTERVIEW

cruelty to kids

CHILDREN'S HOMES FOR THE CHOP?

THE PLAN TO CLOSE ALL CHILDREN'S HOMES IN BRIGHTON HAS BEEN VIGOROUSLY OPPOSED BY ALL THOSE IN DIRECT CONTACT WITH THE CHILDREN OR DIRECTLY RESPONSIBLE FOR THEIR CARE. THIS DEFENCE OF THE CHILDREN HAS BEEN CONDEMNED BY DENNIS ALLEN, HEAD SOCIAL WORKER IN EAST SUSSEX, AND JULIA CUMBERLEDGE, CHAIRPERSON OF THE SOCIAL SERVICES COMMITTEE, AS 'DISLOYAL' AND 'HARMFUL TO THE CHILDREN'! NEEDLESS TO SAY ALLEN IS TOTALLY OUT OF TOUCH WITH GRASSROOTS SOCIAL WORK AND MS. CUMBERLEDGE IS A TORY. SO WHAT DID WE EXPECT? NOTHING. NOT FROM THEM, ANYWAY. BUT THEY HOLD THE PURSE STRINGS AND THEY MAKE THE DECISIONS. SO WE HAVE TO TELL THEM, OVER AND OVER AGAIN, WHAT A CRUEL AND INHUMAN DECISION IT IS.

WHO BETTER TO TELL THEM THIS THAN A RESIDENTIAL WORKER IN ONE OF THE HOMES, WHO, FOR SEVERAL YEARS HAS BEEN A SUBSTITUTE PARENT TO THE CHILDREN IN HER CARE. SHE NOT ONLY CARES, SHE KNOWS. AND SHE KNOWS FAR MORE THAN THE DECISION MAKERS AT THE TOP, FOR SHE LIVES, DAY IN AND DAY OUT WITH THE CHILDREN WHOSE LIVES ARE THREATENED.

Brighton Voice. If the homes were closed, how many children would be affected?

Residential Worker. About 50, in 8 family group homes. Their ages range from 5 or 6 years to 18. They would be sent out of their homes into large institutions in Hastings, Hailsham and Crowborough. The Crowborough home has 20 beds, which makes it a totally different kind of place from the family homes here in Brighton. It cost a lot of money which they have to justify, and as they can't fill it with children from the Crowborough area they are filling it with children from Brighton, regardless of the fact that some of these children have spent most of their lives in a small family home like this one. It's their home, and they feel about it in exactly the same way as other children feel about theirs. Their school and all their friends are here too.

Brighton Voice. What kind of children are 'in care' in these family homes?

Residential Worker. I would say that 75 to 80% of the children in family group homes are perfectly normal, well-adjusted children, who are here through no fault of their own. They are not here because of any misdemeanours, but for reasons totally outside their control, something that happened in their family, often many, many years ago. And some have now been in their group home for 10 or 11 years.

Brighton Voice. How did they react when they heard their homes might be closed?

Residential Worker. A lot of the children are thinking that if they are good enough it won't happen. So they are saying 'We won't have any new clothes, we won't have biscuits, we won't have jam, we won't have very, very basic things and if we economise they won't move us.' Children you normally have to hassle to do a bit of work have been working like proper little Mrs Mopps clearing up. They say 'If anyone comes and our home is absolutely immaculate, then they won't close us'

Brighton Voice. How do you think it will affect them if they have to move?

Residential Worker. They have come into a family group home and here

they have built up trust and relationships. They know they have to leave at 18, so the residential worker has to wean them at 18 from a home which provides everything, a tricky job in itself. But suddenly to pluck them from what has become their nest and their home and push them miles away, just for the sake of finances... well, you can imagine the problems.

Brighton Voice. Can you give examples of how the children treat you as parents?

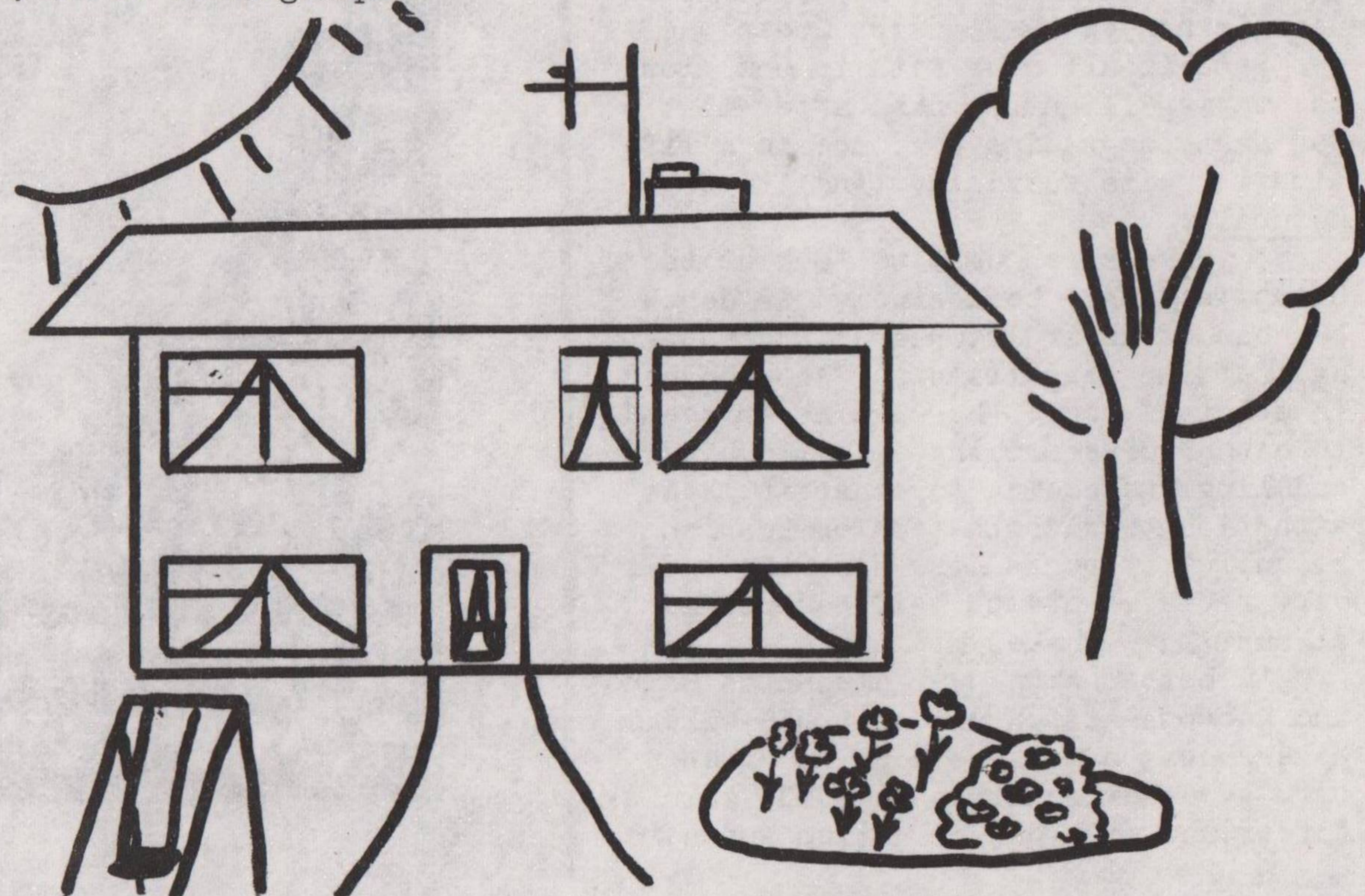
Residential Worker. They confide a lot of their hopes and dreams, like the things they want to do when they leave school. Then they are coming to terms with why they are in care. It's impossible to live with a small group of children without feeling emotion - both ways. It may not be professional to talk like that, but it's real.

Brighton Voice. Will you have any say in who goes where?

Residential Worker. Well, they say they are going to start reviews on all the children in care. They'll look at their confidential files - but they won't actually visit the children themselves. So they won't have a face - they won't really know the children. So it'll just be numbers.

Brighton Voice. So you and all the other residential workers are convinced that the children will suffer?

Residential Worker. Yes. We feel it will be going back years and years and years in child care. It'll just be 'We feed you, we house you, we clothe you, and you thank us: morning, noon and night you thank us.' I think it's terrible and I don't see why our children should have to suffer like this.



Brighton Voice. Quite a lot of the media are saying that the children are to be placed with foster parents. What do you say to that?

Residential Worker (long pause)...I'm trying to think of something serious to say... Well, what can I say? We can't even find foster homes now for the children who need them, and if they close the homes we are talking about an extra 40 or 50. And it's not as if they are all single children. Many are here with their brothers and sisters. Fostering 2 or 3 is entirely different from fostering 1 child.

Brighton Voice. Would the children prefer to be fostered?

Residential Worker. Some would just see it as a way out, rather like a shot-gun marriage, something hurriedly put together to avoid

Brighton Voice. And where are these family group homes situated?

Residential Worker. They're all in normal residential estates and part of the community. The neighbours borrow things from us and if I need a pint of milk I can borrow from them - just like any other families. And the children do quite a lot of community work.

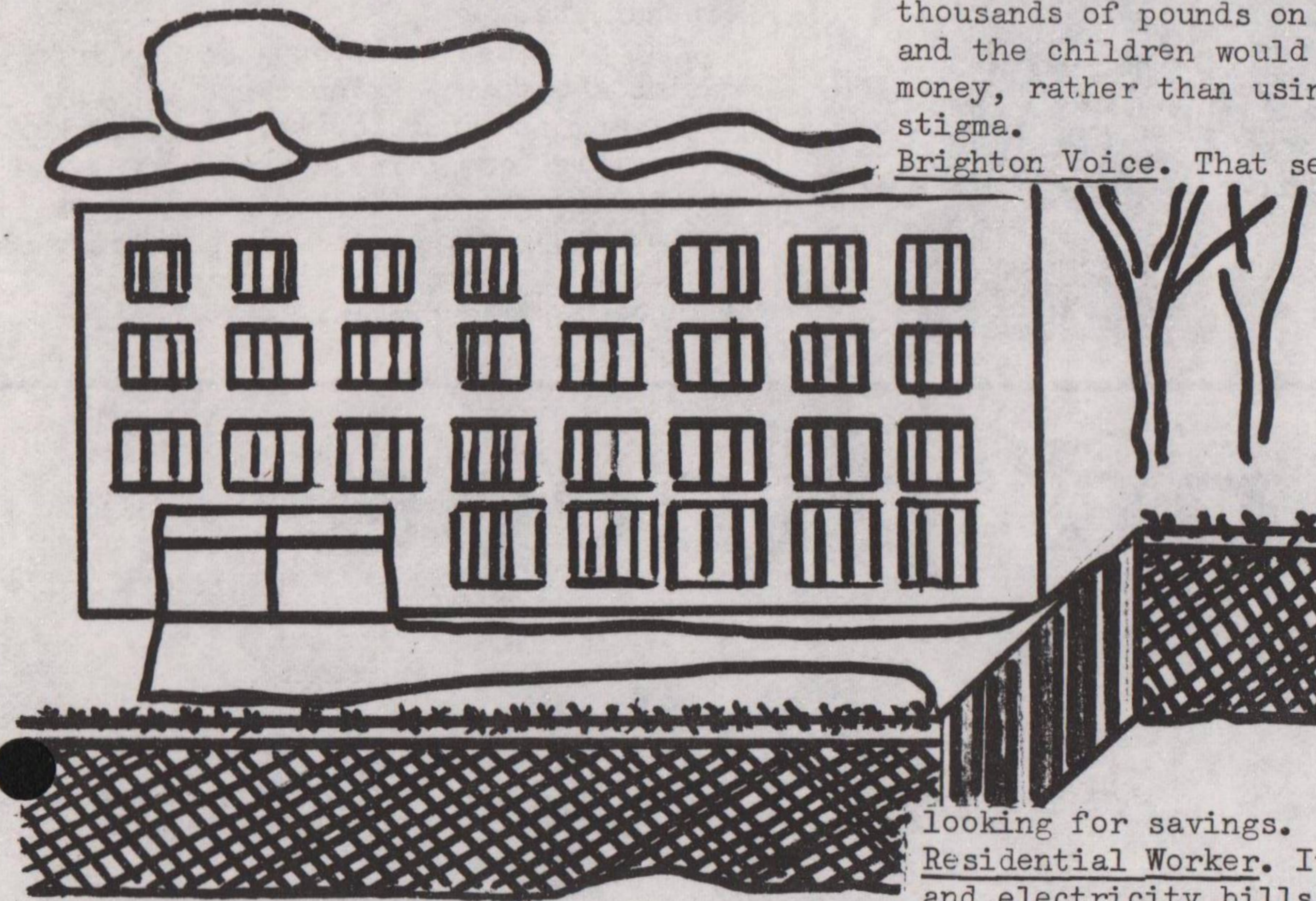
Brighton Voice. Would the neighbours support you in your fight against closure?

Residential Worker. Yes, I think so. We're planning a house to house survey to find out what people do think of us. Some of them don't know we are a 'home': they just think we are a big family.

Brighton Voice. Are these small units more costly?

Residential Worker. Yes, but that's partly the fault of the Council and the administration. Unfortunately we are only allowed to shop at certain shops under contract. We can't shop around in the markets and hunt for bargains. We could save the council thousands and thousands of pounds on the children's clothes by shopping around, and the children would learn so much more if they were spending real money, rather than using a book in triplicate which is a kind of stigma.

Brighton Voice. That seems a very important point if they are



These two drawings were done by one of the teenagers in a family group home when she heard she might be moved from her group home (pictured on the left) to a larger institution outside Brighton (on the right)

sending them to the big institutions outside Brighton. They'd much prefer not to be moved at all, but to stay on in their family group homes where they are very secure.

You ask our children what life is like here - they have their moans, but as one child said at school when there was a talk on 'kids in care' and a picture of strict family homes was painted, she spoke up and said 'It's not like that at all. I live in one - anytime you want to come home to tea you're more than welcome. In fact you can come home now if you want to. Food is not locked away from me. If I'm hungry I can go and eat it'.

That's true. Take the mornings. The children get up when they wake up and come down and make their own breakfasts. They're not got up by a member of staff to have breakfast all together when the member of staff says so. They don't like the thought of that at all. Here it's a normal chaotic breakfast time and a normal rush to get off to school.

looking for savings.

Residential Worker. It is. The children at present never see the gas and electricity bills which come as real: it's all a question of paper and rubber stamps and bureaucracy. So it's not only more costly, it's also very bad training for people who will one day have to manage on their own.

Brighton Voice. You must have felt annoyed with the Council before, why have you chosen this issue to speak out and send a letter to Councillors?

Residential Worker. There's frustration about a lot of decisions from County Hall, but this is just wiping out a whole area of child care in Brighton. These children could be yours or mine. You could have an accident, and through no fault of theirs your children might be in care. We have to speak out to defend our children. It's inhuman, breaking up their homes. They have feelings and they have rights. Every person has the right to their own relationships. They can't just be ended by a financial decision.

Brighton Voice. What did you think of the letters which Denis Allen and Julia Cumberlege sent you, blaming you for being disloyal and so on?

Residential Worker. They're full of hot air. They don't know what it's like. Denis Allen has never been to our home, at least not while I've been here. How can he know what he's talking about. No, I can tell you, we've got to protest. The children would never understand if we abandoned them. We owe it to them. That's where our loyalty lies.

DEATH BY MISADVENTURE

Official home office statistics just released show that a staggering total of 245 people died in police custody between Jan.1970 and June 1979.Of these 143 deaths were not from 'natural' causes,according to the inquest.These figures break down as follows.

ACCIDENTAL DEATH	39
SUICIDE	36
MISADVENTURE	26
OPEN VERDICT	15
MANSLAUGHTER	
(not by police)	2
NO VERDICT	2
(NO INQUEST HELD)	23



In 1970 only 3 people died from non-natural causes;by 1978 this figure had increased to 30,but no explanation has been forthcoming.The police federation has,as usual,reacted with hysteria to requests for further information,even from establishment figures,and while no one is suggesting that all 143 were murdered,there is a strong suspicion of ill treatment in many of these cases, not to mention plenty of others.

Nobody knows how many people are beaten up every week in police stations all over the country - including here in Brighton and Hove.Brighton Voice has printed a series of accusations over the years and been attacked by Andrew Bowden and others for questioning the 'official story'.Now the well publicised deaths in Liverpool and Tyneside have even raised the hackles of the 'white liberals',who are demanding that the whole question be examined by the Royal commission on criminal procedure that has been snoring away since 1977.

However it is unlikely that the Tories will agree to even this total waste of time ;anything that dents their Law and order stance will be to embarrassing particularly during a period when it is only the police and the army that are being protected from the cuts in public expenditure.

What you must do is pass on any information about attacks on those in custody to us,and at least for the record,make an official complaint.We will print the stories we receive and do anything we can to help and get as wide publicity as possible for them.The conspiracy of silence must be broken.

bits and pieces

Prison Notes...

Home Office
H M PRISON
Parkhurst Newport Isle of Wight PO30 5NX
Telephone 0983 (Newport IoW) 523855 ext

Dear Sirs,
I am writing on behalf of Mr. H.. to whom you wrote on 16th Dec. and sent the 'Voice'. He has asked me to thank you and to say he has decided not to have your publication but appreciates the offer.
Yours sincerely,
Bob Rudd (Chaplain)

~~Brighton
NOT FOR
Voice
PRISONERS~~

Thanks...

Dear Collective
Thanks for the free Xmas issue - very nice to get something given!
However inside back cover you mentioned "Security guards,... given powers of citizen's arrest"- NOBODY CAN BE GIVEN powers of citizen's arrest - everybody has them, even you!!
Basically anybody can arrest somebody if they have reason to think they have committed an 'inditable offence'-something punishable by imprisonment of over 7 years, (e.g. a pig kicking you, theft of property, -CONSPIRACY-!!)
Happy New Year,
lots of love,
Chris Reader

Official Racism...

The night the Athina B, Brighton Beach's newest tourist attraction, arrived, 3 rescued Indian crew members were taken away to Shoreham police station, as they had defective papers. Then on Thursday night they were taken to Heathrow detention centre. The next day they were put on a plane to Delhi, stopping off in Athens; where, the idea was, they would receive compensation for their belongings left on the ship.
The Joint Council for the Welfare of Immigrants, supported by Sussex NCCL, who tried to block the deportation, when they contacted the Home Office, received this explanation for refusing them temporary visas:-
"3rd World seamen are highly motivated to abscond..."

LETTER

FROM



The Brigade at Work

CUBA

In October last year 8 young workers and students from Britain joined 250 other W.Europeans to make up the 5th Jose Marti International Brigade to Cuba.This report was written by one of the people who went on this trip.

The 4-6 week stay was an opportunity to live and work with Cuban and European 'Brigadistas',and to visit freely many places - schools, factories,hospitals,ports,and other institutions - in Cuba.We stayed in the Julio-Antonio Mella International Camp 40 miles from Havana,the capital.The solid wooden buildings house dormitories,dining rooms,TV and games rooms,shops and lecture halls.From here we drove to our work site,a partially finished housing estate built for local textile workers.Most of us were un-

skilled,but we benefitted from the patient and persistent supervision of skilled Cuban workers.While plastering walls,mixing cement,etc., there developed an atmosphere of enthusiastic co-operation and we felt in practice the emphasis on productivity,rather than intensity of labour.

Most Cuban housing is built in this way - micro brigades - volunteers from work centres under skilled supervision.In Alawai we saw the potential of the micro brigades; a city built entirely by 'brigadistas'. In the evenings were organised films, lectures,and seminars on aspects of Cuban life - education,health,etc.

Equally important were the social evenings in the camp,days on the beach, spent discussing Cuba and our experiences. The people were friendly and eager to answer questions.Conversation is easy to strike up .

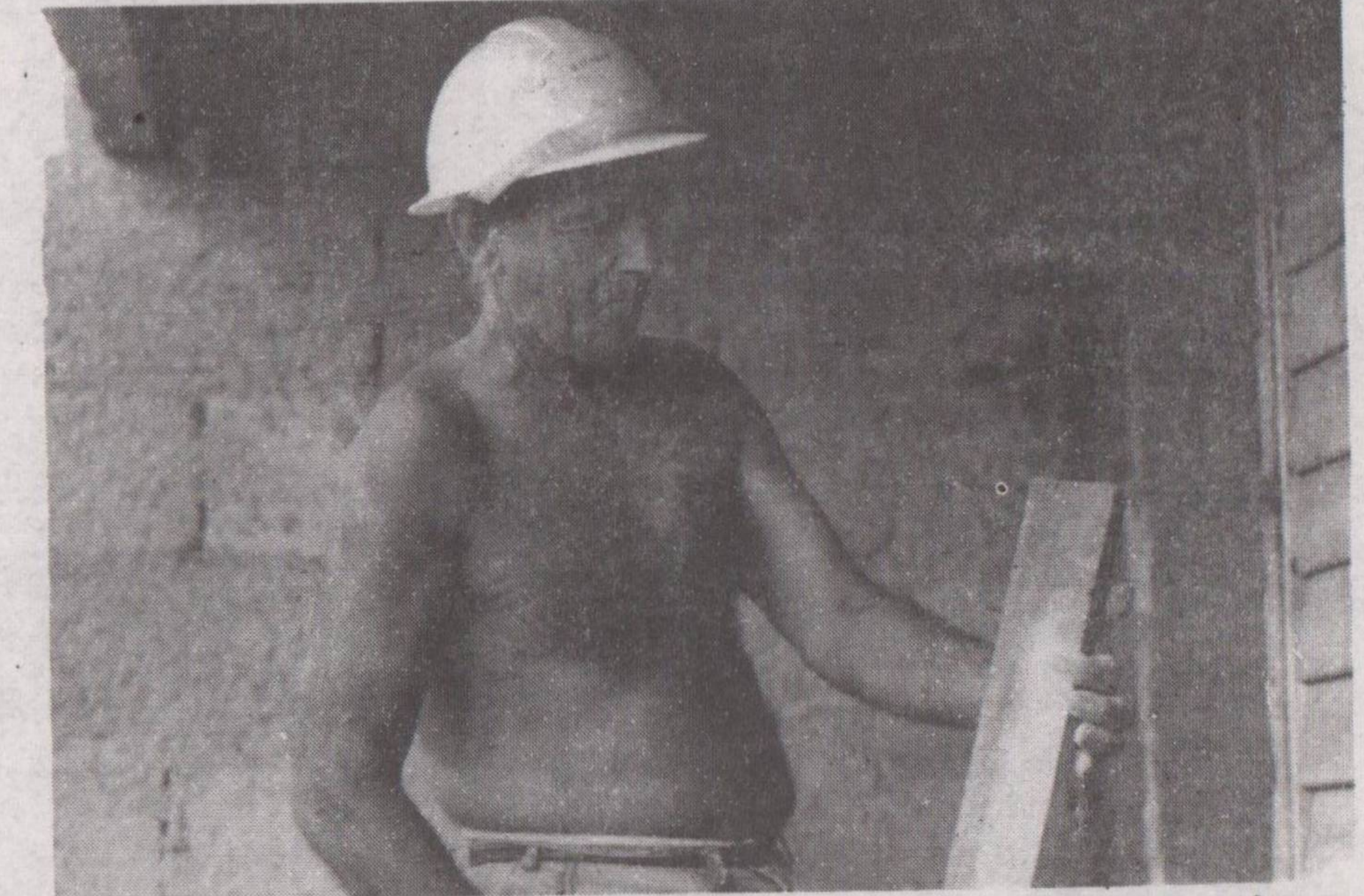
Cuba is a country that transformed its material and social conditions in the 2 decades since the revolution against U.S. Imperialism.Everyone now has enough to eat,clothes to wear,free health and education.It is a country still struggling against under-development and U.S. economic blockades.But the enthusiasm and involvement of the people is in sharp contrast to the divisions and inequalities of our 'advanced' industrial crisis ridden society.

If anyone is interested in hearing more about Cuba,last or next years brigade,or the CUBA - BRITAIN RESOURCE CENTRE,which provides info.and organises events about Cuba,contact -

The Britain Cuba Resource Centre,
c/o 76 Sydenham Park Rd.,
London,SE26 4LL
01 - 699 - 7082

or locally,Chris Br.681217
or Marigold,Lewes 6335

Cuban Children leaving School



'A Skilled Worker Supervised Us..'

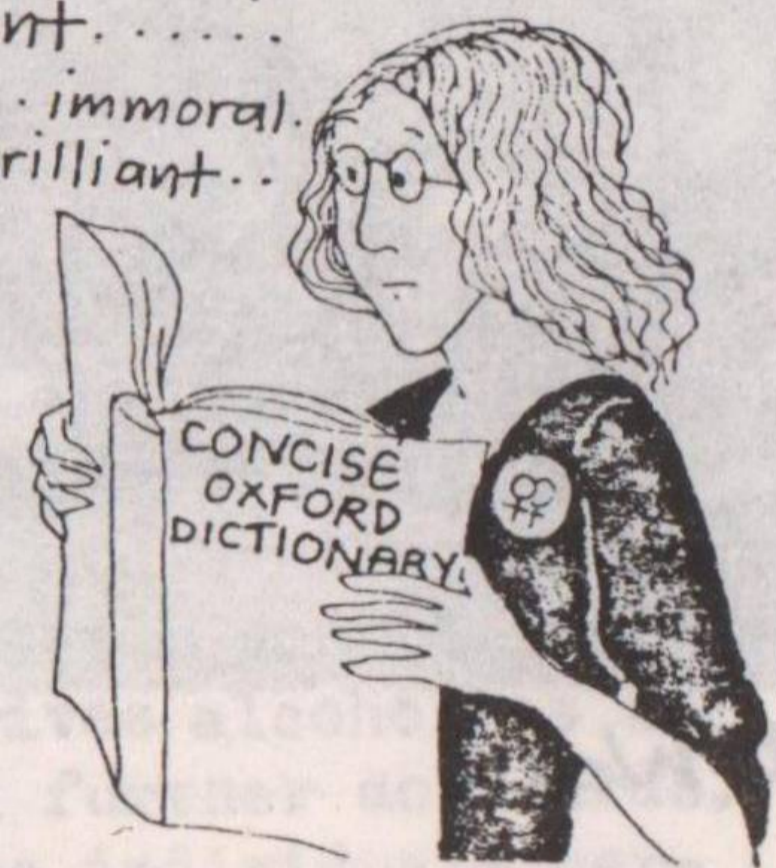
GAY NORMALITY(cont) from page 7.

nor, I would suggest, desirable. Indeed, the Kinsey studies in America showed that almost half of the male sample had engaged in at least one homosexual act, some for a substantial period. Between 5-10% of American males considered themselves exclusively homosexual. Of course, the way in which Moral Watchdogs respond to the demonstration that nearly as many people are breaking a single rule of normality as are keeping to it is to redefine what 'normal' means. Thus we arrive at the incredible double think that gay sex is perfectly normal if it is a temporary phase while exactly the same behaviour is abnormal if it is chosen on a more lasting basis! What is more incredible is the speed with which such an illogical premise is accepted. Again the M.W.s of this world want it both ways.

What is also clear is that the slight majority of exclusively heterosexual people are not 'normal' IN EVERY OTHER RESPECT SUCH AS in every respect such as monogamy, marriage etc. and we arrive at the situation where those who fit every condition are very, very few indeed. But each of us seems very keen to point the finger at someone to prove how 'normal' and therefore acceptable we are. A sort of pecking order of degrees of normality which keeps us divided and at each others throats rather than a society which respects, even welcomes the differences which

exist and nevertheless is able to work together. But what if everyone was gay? What would happen to the human race? For that to happen there would have to be something really awful about heterosexuality and I think that is a ridiculous red herring. Is heterosexuality so bad that you fear such a thing? I think

Hmm..... 'Gay'.....
...indicating mirth,
light-hearted,
sportive.... airy,
off-hand.... cheeky,
impertinent.....
dissolute... immoral
showy.... brilliant..



the differences of sex, race, temperament etc. are an enriching part of human existence. It is when people use those differences to cast stones that others must stand up and say, Enough! Your prejudice and arrogance are less acceptable than the behaviour which you are criticizing.

And why gays should be criticized any more than non-gays is something which I still find puzzling. I would never presume to impose my private and public behavior as a model for anyone else but I reserve the right to be myself and not have such impositions placed on me. Those who initiate such scare-mongering campaigns are doing little more than air their own prejudice and ignorance and it should be seen as such. It is unfortunate that a section of the local press has hastened to provide them with a platform without always allowing balanced articles.

(B.Kennedy, Sussex Univ. Gay Soc)



As a separate news item could you reveal that the Mid-Sussex Times cut a letter I wrote on behalf of Gaysoc so that no mention was there of the fact that the paper will not advertise Gay Switchboard. Could they feel less than proud of their censorship! No other part of my letter was touched. M.K.

AMNESTY... a Gay reply

Dear Brighton Voice,

Perhaps we in Gaysoc can clarify the feelings of many gay people towards Amnesty International. As a movement to reduce imprisonment and torture of those with beliefs which run counter to the dominant ideology, it deserves the support of all of us. We have no wish to be destructive of A.I. On the other hand when such a group opposes the suggestion that people imprisoned for homosexuality should be adopted as prisoners of conscience, then that group may legitimately be criticised and its hypocrisy exposed. This opposition happened when the Dutch, American, French, W. German, Danish and Norwegian A.I. groups proposed such a move. The British delegation, supported by Ireland and Australia, opposed such a policy, saying it would lead to A.I. supporting "exhibitionists, prostitutes, child molesters and other deviants." The American delegation accused the British of telling lies to the world, but nevertheless the motion fell. The British A.I. were not, as they

tried to make out later, passively upholding A.I. policy. They were actively preventing A.I. policy from moving into areas that they disapprove of - perhaps because accusations of denial of human rights might get too close to home? Whatever the reasons, imprisonment torture and murder of gay people simply for being gay or jointly expressing their sexuality can proceed with perhaps a few embarrassed coughs from Amnesty. The 'ambiguous statement' in the last issue of Brighton Voice reveals a half-hearted attempt to compromise over this issue. What A.I. are now saying is that while they will not adopt those imprisoned for homosexuality, they will consider those who have advocated gay rights or who have done something else (like prayed?) and where the homosexuality may be a pretext. Gee, thanks! Perhaps we ought to help those who have advocated freedom of religion as long as they don't actually go to church, or write letters in support of opponents of right-wing oppression as

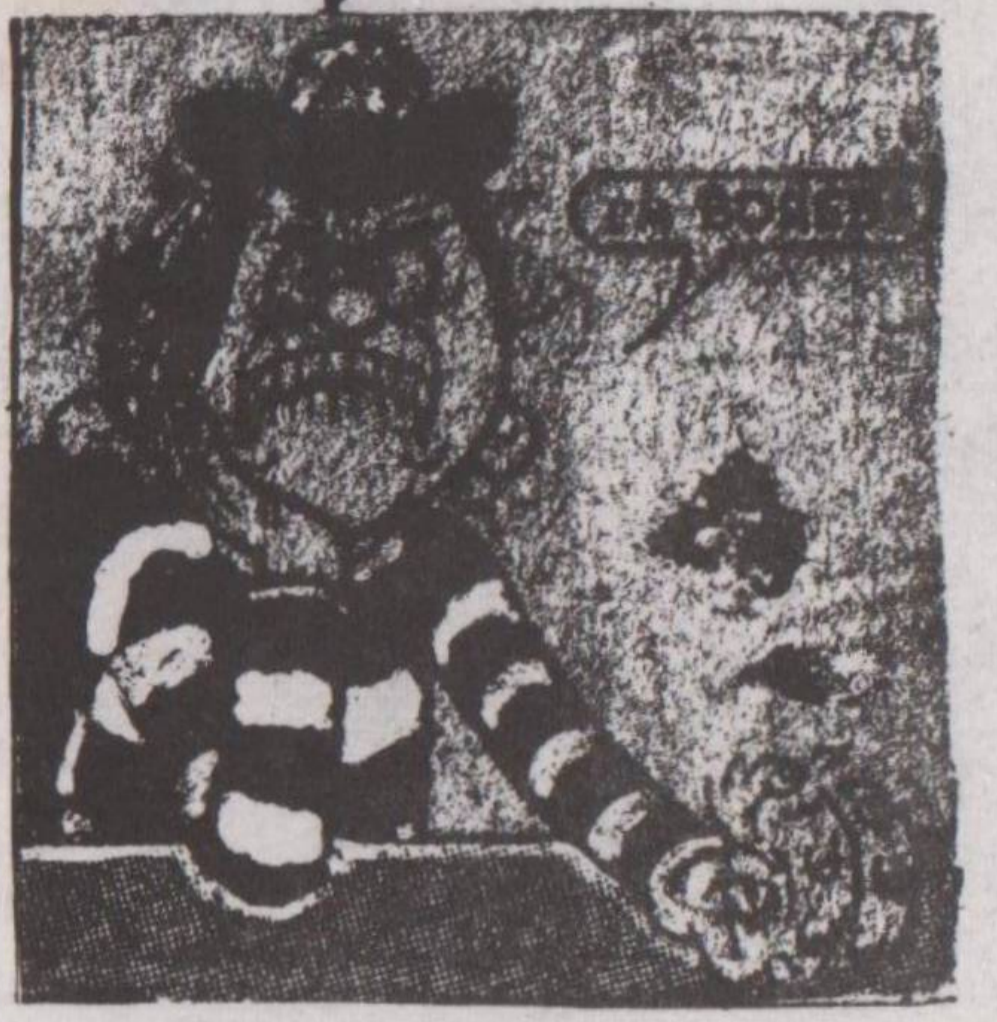
long as they don't join a union or go on a protest march. Of course we poor stupid gays should realise that our freedom to love and live in harmony and peace, free from outside harassment, is so much less important than our over-riding need to follow Zen Buddhism and read the Daily Worker over breakfast. Lest this sound cynical and bitter, let us say, **YOU BET!** By declaring consenting gay relationships outside of their brief and outside of their protection, we believe A.I. has seriously damaged its credibility and consistency in its fight against the use of state powers on those with peaceful and conscientiously-held beliefs. Short sightedly, it has defended the status-quo rather than proclaimed clearly and loudly that the freedom for consensual and self-determined sexuality is one of the most precious freedoms that exists.

love and sexuality,

SUSSEX UNI. GAYSOC

what's on

W.E.A courses at the Institute
Queens Square, Bxton
7.30-9.30 10 thursdays from jan 1st
Women In Literature
Trade Unions & The Economy
Phone Stirling Smith B,ton
680654 for details



Labour Party
Young Socialists
Feb 2nd
Youth against the Tories
March 12.30 culminating
in rally Central Hall
Westminster Addressed
by Tony Benn

RESOURCES CENTRE
Feb 2nd Ecology Party
jumble sale
Feb 9th Benefit with
The Piranhas, Parrots,
Mocking Birds, Golinski
Brothers.
Feb 15th
Anti-Valentines Day Party
Feb 20th
Anti Nuclear Campaign meeting
Feb 23rd
Rock Against Racism



CAMPAIGN AGAINST CORRIE

Stanford Arms;
2nd Tuesday of each month
7.45. Communist Party of G.B.
Every other Tuesday at 8.00pm
Womens Voice

National week of action 1st-8th feb
1st feb dusk to dawn virgil in memory
of all women who have died from
Back street abortions
4pm-4am Warmemorial Old Steine
2nd demonstration 11am Brunswick Square
Rally 12.30am The Level B,ton
5th Rally & mass lobby of parliament
2pm Central Hall Westminster
(phone 2194 re transport)
8th National Assembly of Women
2pm Central Hall Westminster

folk:
springfield hotel:
3rd pete chris coe
10th bert jansch &
24th hedgehog pie
marlborough:

feb 6th martin carthy
13th stuart reed
susssex university:
feb 13th strawhead
shakespeare head
spring st, B,ton:
thurs joe & paul
sun nick burbridge
tim cleary



Dewers Arms Lewes;
feb 8th 7-11pm
Swing Back The 60s
Proceeds to the All Saints
Community Theatre Company

Salisbury Hall
Grand Parade
Feb 20th
1980 Spit & Polish
Girly Show & Music

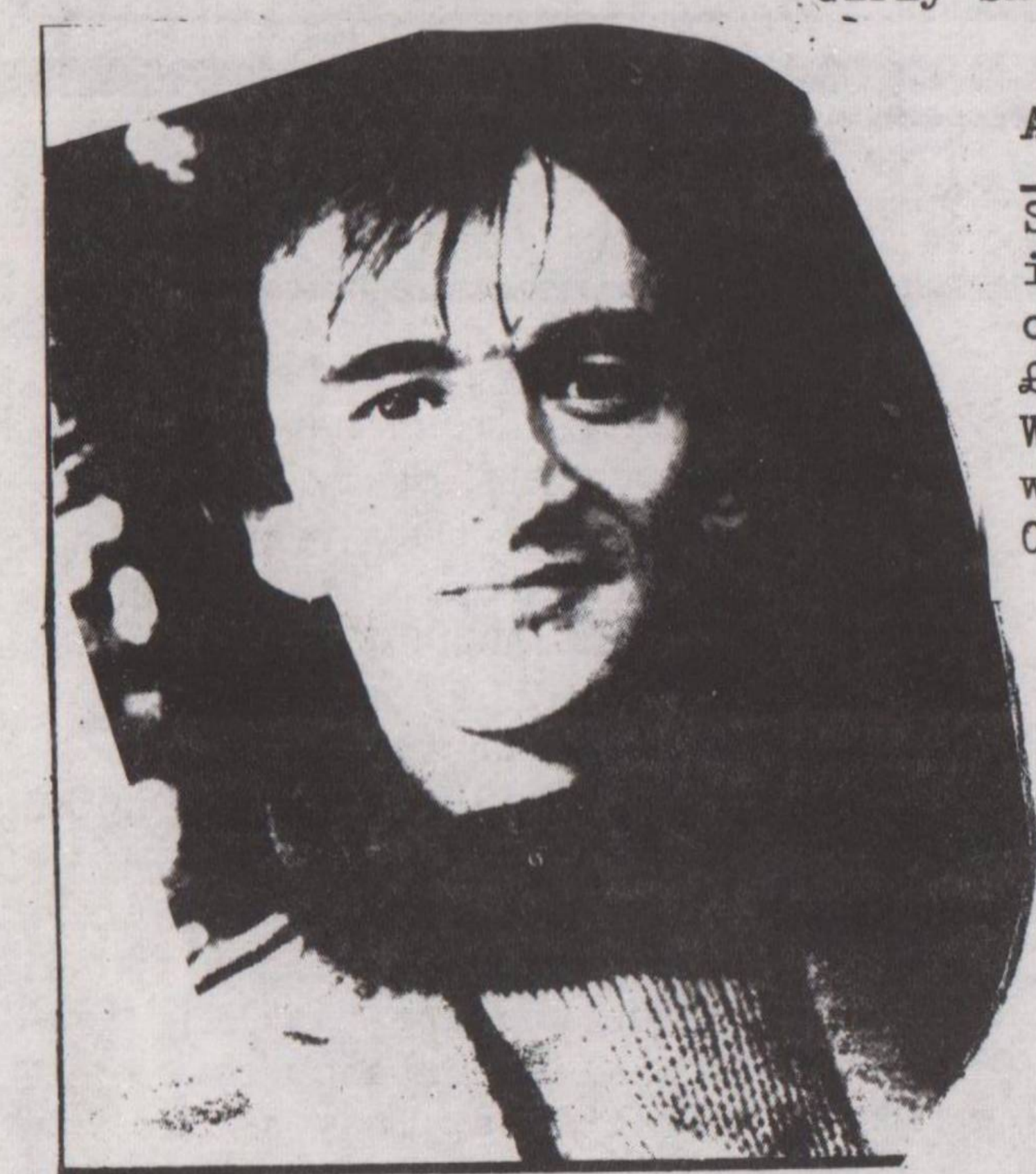
Northern
1st feb Raw Deal
2nd Airport
6th Panama jazz band
7th lipstick(debut)
8th Tinsel
9th Airport
14th RawDeal
15th Tinsel
16th Airport
28th
28th ABA
29th Tinsel
March 1st Airport

ACCOMODATION WANTED IN HASTINGS

Single Woman seeks accomodation
in Hastings. Pref. Communal house
or poss. self contained flat
£10 -£20 pw.
Would be willing to share in/help
with childcare
CONTACT BRIGHTON 683930.

OUT NOW! OUT NOW!

LIVE AND LEARN: QueenSpark
The life story of Les Moss,
local trade-unionist and
communist. The story of his
struggles in his own words.
(Review in the next issue)



STOP CRUELTY TO ANIMALS!

Readers may quite well be disturbed by recent exposure of cruel experiments currently being conducted, quite legally, at Sussex University. One such experiment is Peter Lenni's practice of boring holes through the skulls of cats, so as to implant a 'heat probe' and stimulate the optic nerve. This is performed apparently to test the reaction to varying lighting techniques, and is typical of obscenities being carried out daily in thousands of laboratories throughout the world.

Professor MacIntosh has claimed that by performing the above act, scientists at Sussex have managed to deduce that a child born with a squint should be encouraged to use that eye early, to save it from becoming useless. This is common sense ...

Other animals are being used in cruel experiments which form part of the Psychological Behaviour Patterns course. So far only 20 students have refused to continue with this course.

Equally horrifying experiments on animals are performed throughout the country in order to test commercial products - shampoos, weedkillers, paintstrippers, cosmetics and pharmaceutical products ('Miracle cures').

Illegal?

The laws surrounding Experiments on Animals have not been reviewed since the 1876 Cruelty to Animals Act was passed. Since that date, not one prosecution against a vivisector has been heard in court.

I don't suppose, surely, for one moment, that this could be because it is the Home Office Secretary (responsible for issuing the licence necessary to 'test' Nerve Gases & Germs for Warfare, along with Chemical Sprays for use by the specially trained Riot Control Squad) who is allowing this torture to continue unchallenged?

At this moment, both in this country and America, monkeys are

being strapped into electric chairs, shot full of chronic amounts of radioactive material and then forced to run treadmills until they die. This experiment is carried out to decide how long troops could operate in a Nuclear War Zone, suffering the effects of the Neutron Bomb ...



Anadin' gives you all round relief

wela colour confidence

indigestion? pains?

colours confidence

indigestion? pains?

Factory Farms

Animals on factory farms are also subjected to unbelievable cruelty. For example... calves cramped in Veal Units, injected with hormones and flesh-whitening agents. A sick

aspect of our smooth, glossy, supposedly Civilised Age ...

Crops and other plant foods which should be nourishing the whole of humanity, including the starving Third World, are being fed to animals in Factory Farms. And every day marshes are drained and woodlands felled to be sprayed with chemicals and used to grow forced crops, to be fed to the victims in Factory Farms.

Alternatives

If we could wean ourselves from our dependence on animals for food, vast areas of land could be given over to tree planting, and integrated Forest would, eventually, restore the Natural Balance. Dust Bowls could be reclaimed and soil erosion checked; with careful planning, several species of tree could provide more than adequate food and fuel.

What can the individual do to help turn the Tide of Apathy and Indifference surrounding cruelty to animals? Boycott the products of the factory farm. Refuse to create a market for polluting and unnecessary products (most drugs are simply masking the side-effects of illness caused by imbalance). Adopt a more natural diet. Contact others to work positively towards changes. Listed below are 5 groups, all very active in the field. They will be only too glad to pass on their aims, ideas and suggestions for ways in which you can help.

Helen Archer, Animal Aid (see Info Page for details of local group)

- 1) **COMPASSION IN WORLD FARMING:** 20 Lavant St, Petersfield, Hants (Oppose Factory Farming, hope to reclaim Forest and Hedgerows)
- 2) **ANIMAL AID:** 111 Estridge Way, Tunbridge, Kent (oppose F/F & Vivisection fighting cruelty to animals by peaceful/non-violent methods)
- 3) **VEGAN SOCIETY:** 47 Highlands Rd, Leatherhead, Surrey (advocate diet free of bloodshed, challenges life-style based on cruel practices, and is now recognised as an Educational Charity).
- 4) **INTERNATIONAL PRIMATE PROTECTION LEAGUE:** Regent Arcade House, 19-25 Argyll St, London W1V 2DU (representatives in 32 countries)
- 5) **HENRY DOUBLEDAY RESEARCH:** Convent Lane, Bocking, Braintree, Essex (working on project of developing freely available plant foods (pods et etc) and tree planting schemes)

TOWARDS A NUCLEAR FUTURE?

The atomic question has sparked off a debate much more far reaching than it could have been imagined when the issues were first considered. The gravest feature is that these problems does not really take place among honest citizens, but is dominated by an elite of experts.

TOWARDS A NUCLEAR FUTURE is the title of a theatre piece which will help to alter that. It is being presented by the Pip Simmons Theatre Group at the Gardner Arts Centre, from March 4-8.

In it the false hopes of a nuclear future (already begun) are present-

ted in the form of a contest between those for and against, with protest songs, solos and short documentaries. The supposed murder of Karen Silkwood who knew too much about leaks in a plutonium installation, Harrisburg, the danger of nuclear terrorism and black-mail are all brought up in a way which exposes not only the arguments, but also the methods of its presentation. Throughout, the idea is not to take sides so much as to open up the debate, to expose the flaws in the arguments, but above all to produce dramatic theatre.

Through the last decade the Pip Simmons Theatre Group have worked closely with the Mickery Theatre in Amsterdam, and they regularly tour all over Europe with pieces such as **GEORGE JACKSON'S BLACK AND WHITE MINSTREL SHOW**, and those of you who saw their treatment of **THE TEMPEST** will certainly not have forgotten it!

There is no doubt that they are a brilliantly inventive, experimental theatre group who are tackling issues of crucial importance to our future life-styles. They should not be missed!

7.15 15 Park Crescent Cl. or phone 692971

GINGERBREAD: Selfhelp pressure group for one parent families Basement 6 Marlborough Pl. Mon-Thurs 9-11 or phone 697208 or 688664

HUNT SABOTEURS AND ANIMAL ACTIVISTS: Trevor Scott, Fl. 5, 4 Powis Sq, Btn. 202276

LINK UP: Sussex University Community Action. 680390. Please send for copy of PRAXIS our free magazine.

PROJECT ADVENTURE PLAYGROUND: Hove 737357, 738712 or 411565.

PARENTS HELP LINE: 688633

RESOURCE CENTRE: Top of North Rd., 607743. Basic resources for the community: meeting space, duplicating, screenprinting, community press, transport, directory of meeting space and much more.

RIGHT TO WORK CAMPAIGN: 19 Elm Grove. 687848

SAVE THE FAMILY PLANNING CLINICS CAMPAIGN: c/o F.P.A. 13a Western Road. 774075

SOCIALIST ENVIRONMENTAL RESOURCES ASSOCIATION (SERA): Socialist solutions for a just and sustainable society. c/o Resource Centre.

SUSSEX COUNTY SKATEBOARD ASSOC. 737357 (am)

TRADES UNION COUNCIL: Coordinating group of local trade unions affiliated to the TUC. Ann Jones, 70 Hartington Rd. 601559.

LABOUR HISTORY PROJECT & LABOUR TRADES & LABOUR CLUB: Meeting place for trade unionists. 16 Lewes Road. 601101

TRANSPORT 2000: Meetings 2nd Tues. of month, B'ton Station 7pm.

UNITED NATIONS ASSOCIATION: Nancy Dore, 157 Surrenden Rd. 501370.

WORKERS MUSIC ASSOCIATION: Basement, 28 Livingstone Rd, Hove.

WORKERS EDUCATION ASSOCIATION: Brighton 680654.

PROJECT (B.A.P.P.): info, advice, employment-counselling literacy & numeracy for those at particular risk of being sent to prison. Room 1, The Institute, Central Free Church Queens Square. Phone 25998 Mon & Wed 3.30-6pm, Tues 9.30-12.30. Phone 607141 Fri 2.15-6pm.

CANCER PREVENTION: (Area Health Authority) 23344

CITIZENS' ADVICE BUREAU: B'ton: 17 Ditchling Rise 601664, Mon-Fri 10-4pm & Tues 6-8pm; 2 St Georges Place Mon-Fri 10-1pm & 2-4pm Hove: Town Hall (Tisbury Rd) 734811, Mon/Wed/Fri 10-12.30 & 12.15-4pm; Tue/Thu 10-4pm

CLAIMANTS UNION: Room 6, The Institute, Queens Square. Tues, 11-2. Self-organisation/ Self help for claimants/ ex-claimants. 202492

COMMUNITY HEALTH COUNCIL: Advice on problems/difs. with the NHS. B'tn 33824, Hove 71186

HOUSING ADVICE CENTRE (council): 73 Grand Pde 29801, Mon-Fri 9-4.30pm

LABOUR WEEKLY ADVICE CENTRE: 179 Lewes Rd. 10.30-11.30

LEGAL & WELFARE INFO DESK: Union Hall, Air St. Sats. 10-4pm

LIBRARIES: do not offer advice but have books which will inform you of your rights. Community info also available

NATIONAL COUNCIL FOR CIVIL LIBERTIES (Sussex): 689385 or c/o Public House Bookshop (see 'SHOPS')

PREGNANCY ADVISORY SERVICE (B'tn): Pregnancy testing, counselling abortions, vasectomies: Wistons, 138 Dyke Rd, 509726

RENT TRIBUNAL: rent disputes, security of tenure etc, 157 Preston Rd, 506381

RIGHTS CENTRE (B'tn): Advice on legal problems. Central Free Church, Queens Sq, Tue 5.30-7.30; Thu 12.30-2. 5.30-7.30 Phone 202492

SAMARITANS: For those in despair B'tn 772277 (24hr); Hove 102 Clarendon Rd

CLARENDON GARDEN ACTION GROUP: Campaign to save green space in densely populated Kemp Town. Sec. Joanna Stapleton 689143.

GEORGE STREET AREA SOCIETY: (Save George St. Campaign) Howard Allaway, 7, Steine 693763.

HANOVER COMMUNITY ASSOCIATION: 33 Southover St. Self-build community centre. 694873

KINGSCLIFFE CONSERVATION SOC.: Ms. N. Marlow, 18 Bedford St. NORTH LAINE COMMUNITY ASS'N: Cnt. Marion Graham 680950

QUEENS PARK COMMUNITY ASSOC.: Make Sherrred, 71 Richmond St. Mon, 2-4/Tues. 2-4, 6-8 B'tn 699376

SQUATTERS & TENANTS ADVISORY SERVICE: Advice to the homeless & those with housing problems C/C Resource Centre, North Rd

TWO PIERS HOUSING CO-OP: Collective ownership and control of housing for young single people. Contact Natalya Belcher c/o 9 Grange Road, Lewes. Lewes 2029

WEST HILL COMMUNITY ASSOCIATION 21359.

WEST FIER SOCIETY: John Lloyd, 5 Belle Vue Gardens, 603705.

ANTI-FASCIST COMMITTEE: c/o 179 Lewes Rd, B'ton. ANTI-NAZI LEAGUE: c/o Resource Centre.

Anti Nuclear Campaign Contact: Margaret McIlroy: 30 Over St. Brighton. Tel: B'ton 696425

BIG FLAME: 68 Compton Rd, or phone B'ton 721283, for details of meetings, etc.

BRIGHTON ANTI-NUCLEAR GROUP: Nick at 18 Bloomsbury Place, COMMUNIST PARTY G.B.: contact Sec. P. Coffin, 95a Saint George's Rd. (687336) meet-1st. Wed. of month at the Stamford Arms, 7.4.5. Phone for details.

COMMUNIST PARTY OF BRITAIN (ML): 37 Gloucester Rd. - 684404.

COOPERATIVE PARTY, B'ton: 86 London Rd. 683076. Hove: J. Cattell, 29 Foredon Drive, Portslade.

ECOLOGY PARTY: B'ton Branch. Sec. Val Collett, 680750. Meet fortnightly at the Marlborough Hotel. Tue. 8pm.

FABLIANSOCIETY: G. Forbes, '66 Meadow Way, Burgess Hill, Tel. 963-43723.

INDEPENDENT LABOUR PUBLICATIONS (ILP) (BRIGHTON BRANCH) Socialists Discussion Groups, production of pamphlets, etc. For details contact Gary Kent 4 Brigden St, B'tn 558070.

MORE POLITICS

LABOUR PARTY: B'tn-179 Lewes Rd 602592 Sec. Nobby Clark, above. Hove-40 Cowper St. Sec. J. Cattell, 29 Foredon Dr., Portslade, Lewes-3 North St. Tel. Lewes 4312.

LIBERAL PARTY: B'tn Pavillion F.Hix, Gordon House, 14a Ship St. Contact: 25315 (day) 26560 (evening). Brighton, Kemp Town. A. Framton, 32 Brownleaf Rd. 36817. Hove & Portslade: J. McCormack, 11 Wellington Avenue, Hove 738462.

MIDSUSSEX ANARCHISTS: c/o Resource Centre.

NEW COMMUNIST PARTY: M. Chaplin 83 Edburton Ave., Brighton.

SOCIALIST CHALLENGE: c/o International Marxist Group, Student's Union, University of Sussex. Or tel. 605092.

SOCIALIST WORKER'S PARTY: 19 Elm Grove, B'tn 687848.

UNITED TROOPS OUT MOVEMENT: details of local branch from Box UP, 2a St Pauls Rd London N.1

YOUNG LIBERALS: c/o Councillor D. Rogers, 8 Guilford Street. Brighton 26014. (L.P.)

YOUNG SOCIALISTS (L.P.): B'tn. Carl Wiper, 28 Bernard Rd. Tel. 609510

Hove: C. Walder, 120 Clarendon Villas, Tel. 722218

Lewes: A. Pryan, 16 Willow Walk, Newhaven 6299.

Let us know c/o Public House Bookshop, 21 Little Preston St. 28357.

The information page is a free service to all individuals and groups trying to take control of their own lives.

The Voice depends entirely on support from its readers. If you have some spare time and would like to help in writing/production/distribution, contact us via Public House Bookshop, 21 Little Preston St.

TRADES COUNCIL BULLETIN

Feb 1980

no 11

'EDUCATION' UNDER THE TORIES.

"The Government was elected to promote higher standards of achievement in Education..." was how the Tories introduced proposals for education cuts in July 1979. The first day back at school provided the following insights into how achievement will be promoted into the Eighties.

Staff replacements are now to be vetted by the Chairman of Finance and General Purposes Committee, and Council Leader, David Green. Heads will have to strongly justify reappointments after resignations. Appointments may be delayed for weeks or even months and presumably the point of the exercise is to stop some replacements. So who teaches the kids in the meantime? NUT members in Hove are determined not to hide this cut; "no cover" for unreplaced teachers is already planned.

The internal decoration of schools has been stopped indefinitely, except for toilets and areas where food is prepared or consumed. Many schools are several years behind in maintenance. Presumably the idea is to condition children to crumbling hospitals and decaying council housing by teaching them in decrepit schools!

Education Committee members are noted for their fine grasp of modern education. An NUT delegation spent a frustrating few hours at Lewes last December. When they complained about a 2½ year freeze on money for books, paper, paint etc they were told to 'use their ingenuity'. Another teacher complained that outdoor toilets that he used over thirty years ago were still in use. 'Outdoor toilets are good for the soul' was the cheerful reply.



"The great advantage as I see it is that our holidays will remain uninterrupted by school terms"

The teachers pay negotiations are now moving into their second year. It is obvious that hard up local authorities will use the final pay award - assuming that there are any teachers left when the money comes through - to demand improved productivity i.e bigger classes. Bigger classes might look good in financial terms but of course the children suffer, especially the less able and socially deprived.

The decline in teachers' pay underlines the weakness of teacher unions. If the labour movement is serious about defending education it is to be hoped that all unions, political parties and parents' organisations will unite in the continued fight to resist Tory cuts. There can be little doubt that the school meals and nursery services will be further threatened after the next budget. Both services are vital, especially for working class families and single parents, if they are cut it will be the main body of junior and secondary schools which will be attacked next.

One final fact to counter the soothing platitudes about standards from county hall. East Sussex comes a proud 5th in the league table of Tory Axemen. Only 4 local education authorities out of 104 cut more than East Sussex from their 1979-80 budgets.

Jon Mager (NUT)

Overseas Students

-Why should we care?

When the Labour cuts hit the University in 1977 the management tried to sack craftsmen. They were stopped by the first industrial action ever seen on campus, with the threat of more to come. However, natural wastage has taken its toll, with around 15 technical posts and 10 manual posts left unfilled. With 75% of University expenditure going on wages, any further cuts can only spell serious reduction in the workforce.

Tory plans mean exactly that: on top of the general 3% cut in spending for the current year, they propose to remove all financial support for overseas students. The University is meant to get the money back by charging so-called "economic fees" to all overseas students of £2,000 or more, an increase of at least 100% on present fees which have already shot up steeply until they are far above those paid by home students.

To the public, especially those with racial prejudice, this may seem fair: why should we go on "sub-



sidising "foreigners? But the fact is that foreign students contribute more to both our economy and our research programmes than they take out. The fact is that the fee rises are a dishonest method of making another swingeing cut in educational expenditure. The Tory govt know very well that Universities won't be able to recoup the money (and even if they could it would mean using public resources for the private education market).

The new cut can't yet be quantified. It could be as much as 20%. Even if a 10% cut implies the loss of 200 jobs in a workforce of around 2,000, over the next three years.

This is such a crazy policy its hard to know where to begin arguing against it. Spin-off effects will be drastic: essential research programmes cut, people paid public money to stay at home instead of supplying a service, a massive increase in the local unemployed - for these jobs will NOT be switched into the productive sector, a serious deterioration in the higher education service (including adult education), considerable loss of trained manpower. (The claim by Rhodes Boyson that more places will be made available for home students is simply a lie).

And that's on pure economic grounds, the grounds chosen by the govt itself. Even more important, it's part of the massive run-down of the fabric of welfare and public services which has been built up slowly over the years to push back the naked brutalities of capitalism.

More immediately, they are an attack on the jobs of University workers. Response of the TU Branches on campus has been swift and united. We support the campaign against the East Sussex cuts which affect us in our daily lives, as well as the jobs of people in our sister unions. On campus, we will press the management to put up a real resistance by refusing to implement the fee rises and the cuts. We shall picket the University governing body to support this demand. We shall fight enforced redundancies by industrial actions. And we shall resist "natural wastage" - which means one of our members or potential members on the dole queue - by a policy of non-cooperation.

attack on unionists rights

The Trades Council has unanimously condemned an attempt by East Sussex County Council to prevent its workers from publicly criticising council policies.

Following Press coverage of the opposition of Social Service Workers to a proposal to close Brighton Children's Homes and distribute the children throughout the county, some were threatened and others disciplined.

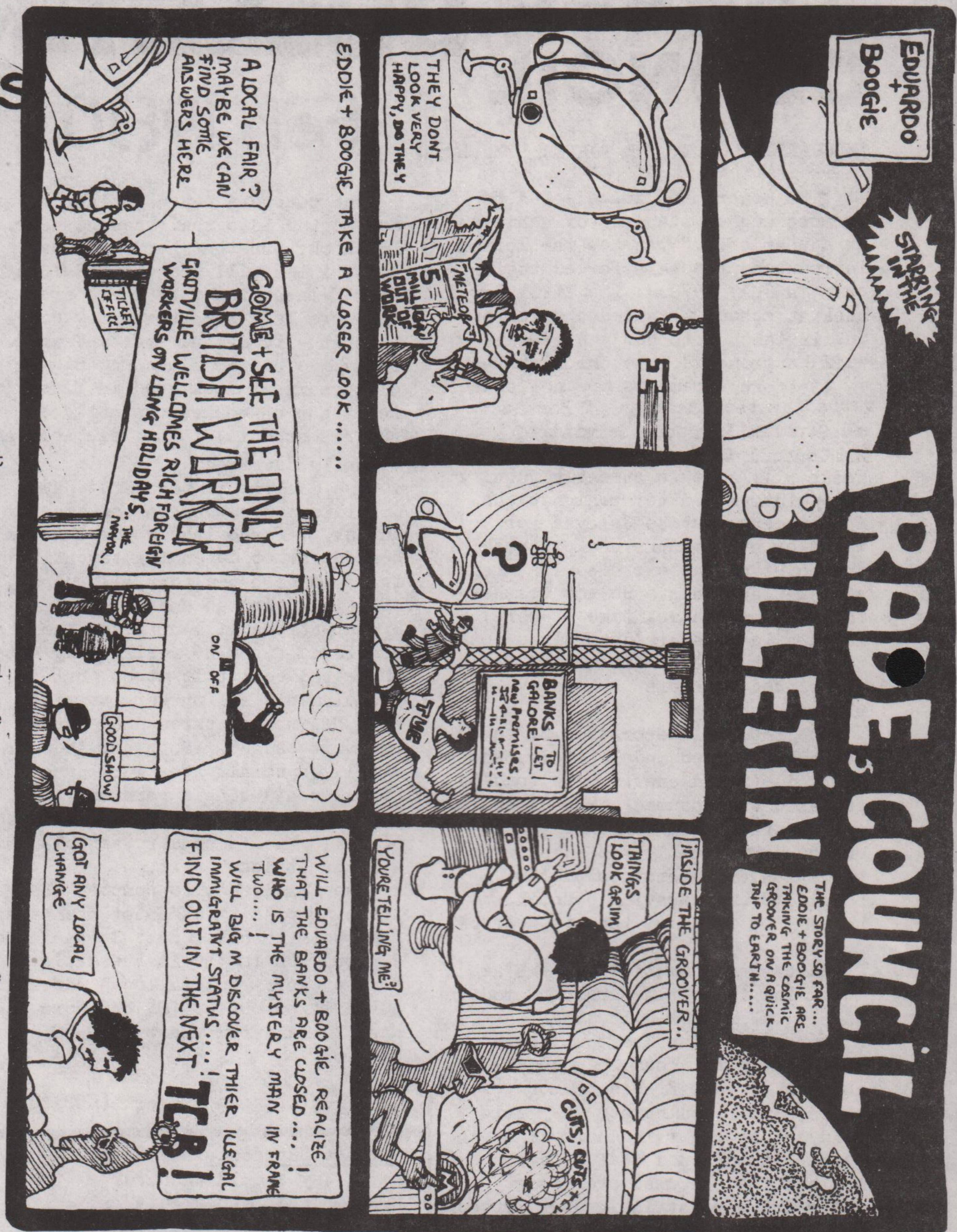
Angry delegates spoke out against this act and passed a strongly worded resolution - it was pointed out that council workers are not restricted by the official secrets act and so have the same rights as other citizens and ratepayers to comment on matters of general public interest. Any attempt to bypass these can only be interpreted as an attack on people doing all that they can to defend those people least able to fight back.

The majority of councillors have no interest in defending the more disadvantaged sections of the community and in this situation, it is mainly the public service workers who are equipped with the information necessary to mount a counter attack. The present government is aware of this and having failed have now resorted to threats and action against trade unionists exercising their democratic rights.

Please support those disciplined by asking your branch to voice its protest. The person to contact is
Julia Cumberledge,
Chairperson,
East Sussex County Council,
Social Services Committee,
County Hall, LEWES.

Trades Union Council Secretary Ann Jones moved the resolution supporting the social services members at the South East Regional council of the TUC in January - the motion was carried unanimously.

The general principle that trade unionists must retain the right of free speech was endorsed by the meeting. In her speech Ann Jones explained that these Social Workers were so angry at the proposal to close residential childrens homes that they had no alternative but to sign a protest letter and release it to the press. This type of intimidation by an employer had also been utilized against S.C.P.S. members in the Post Office during the telecommunications strike last year and was yet another method of attack against the Trade Union Movement which we must be aware of and act against.



Postscript....

Following the disciplinary action against certain social workers a secret ballot was held to decide whether a series of one day strikes or a policy of "non cooperation" should be introduced if East Sussex go ahead with there plans to shut eight childrens homes in the town. - in persuit of their vigorous campaign against 'waste'. No doubt the result of the vote will be made known at the next Trades Council Meeting along with proposals for further action.

BRIGHTON VOICE *****

This supplement is edited by the Brighton Trades Union Council in conjunction with BRIGHTON VOICE. No. 64, February 1980



National Council for Civil Liberties
UNSURE ABOUT PICKET RIGHTS?
OR ANY OTHER CIVIL LIBERTY PROBLEM?
IF SO CONTACT

SUSSEX N.C.C.L.

21, LITTLE PRESTON STREET,
BRIGHTON.
OR PHONE
689385

MEMBERSHIP: £1 PER YEAR.

JOIN NOW AND HELP

DEFEND CIVIL LIBERTIES.