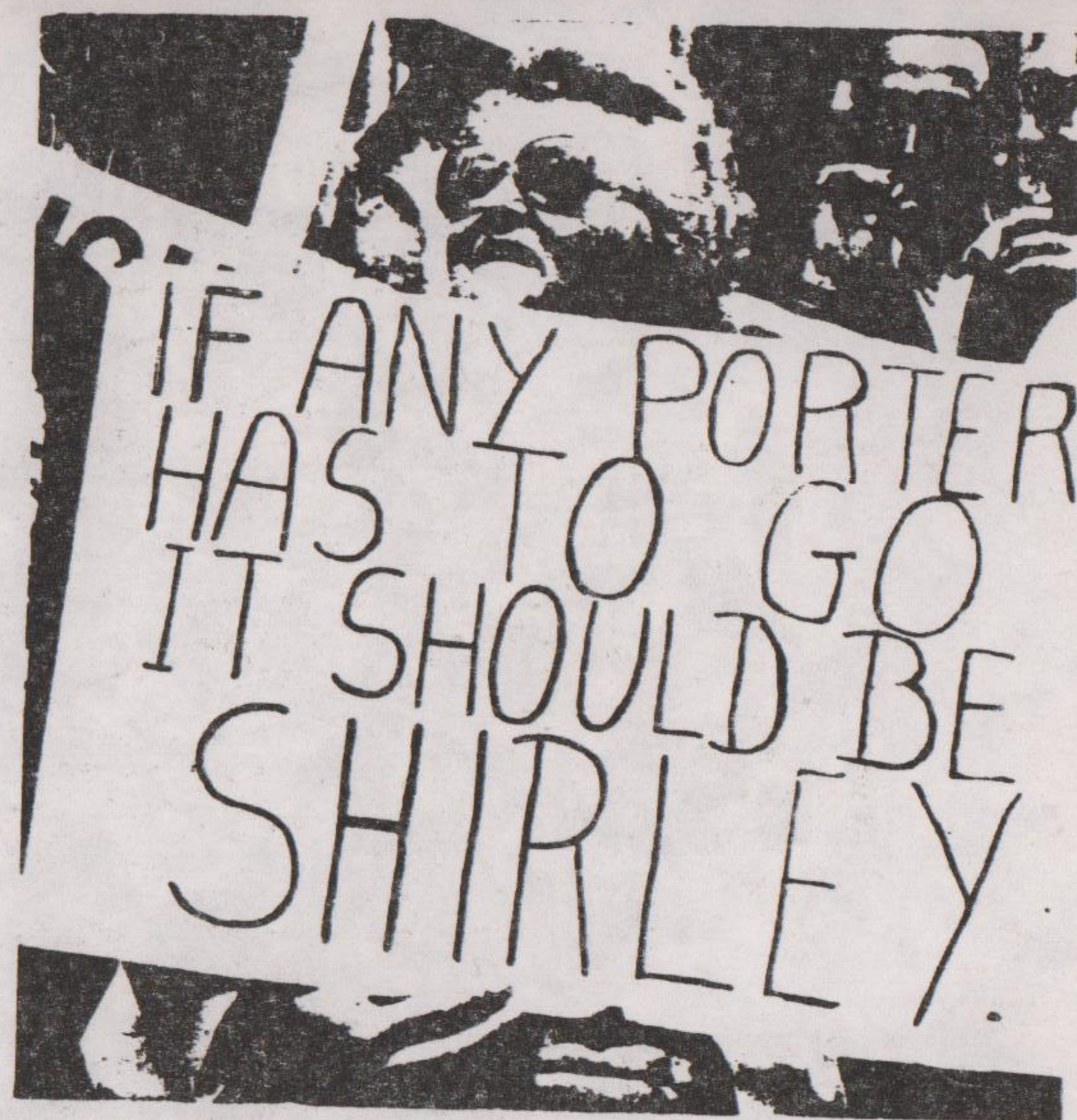


Sources reveal to us that some education establishments are doing their own little bits of privatisation. One is the Roehampton Institute in south west London. Among their ventures include a TV studio and a printroom both having to make money for the Institute. This means as they need to make money they avoid doing internal work as they go for more outside work. They are not fighting the cuts but making up for lost revenue by taking facilities outside.



A leaflet is being distributed jointly by the Community Resistance To The Poll Tax group and the Anti-Poll Tax Union which provides several ideas for sabotaging the registration of payees.

The leaflet suggests that any registration forms sent by post be returned and marked 'Not at home'; alternatively you inform the Registration Officer that the dog ate the form. One delaying tactic is given where you return the form after a couple of weeks and ask a question relating to the form. The same process can be repeated ad infinitum.

The leaflet advises that the resistance to the tax must be a collective one if it is to work. It mentions organised anti-Poll Tax groups in several Edinburgh suburbs and neighbourhoods. In one estate virtually every house displays 'No Poll Tax' posters on the windows. The leaflet also suggests that when the Poll Tax canvassers come around they should be harassed and generally made unwelcome.



THE SLAVE

14564 5

MAY 1988

RESISTING THE CUTS

Since 11th March 3 libraries in Hackney have been occupied by NALGO members and supporters. Yeah, for 8 weeks! These libraries were due to close the next day, along with 3 other services currently shut down. A library service is being run from the buildings, and will continue to be until all 6 services are fully restored. After initial doubts many local people are using the services provided by the branches, as well as helping to run them alongside regular library workers and other trade unionists.

Support is still needed, so if you can do anything to help get in touch with the contact at the end of this piece. NALGO members are not on strike, so running the occupation is enormously difficult for library workers, as they are doing it in their spare time. Solidarity action is also needed, as the current position is a stalemate, with the Council hoping the occupation will go away so it can avoid bad publicity in acting against it. To win a lot more pressure has to be put on the Council, the occupation only keeps the issue alive.

The pressure for solidarity has got to come from below, because the Hackney library dispute is in direct and total opposition to the cuts and re-deployment. Significantly little has been done by the branch "leadership" of NALGO to build on this resistance. Despite the branch vote to accept the re-deployment agreement, in the areas worst affected by the cuts-Housing and Libraries -there has been some resistance. This suggests that the negotiation orientated branch structure is out-of-step with the members needs in practise, which is a fighting organisation. (And when did you last see so many managers at a union meeting? - It's time to kick them out of the union.)

For workers not yet forced to fight the cuts, or expecting a more savage round next year, there are lessons to be learned. The chief thing is that occupation gets you public support, something you can build upon. It also gives you something positive to fight for, but you'll probably need solidarity action to escalate and win. The rest is up to you.

For supporting the dispute, the best people to contact are:

Dave Keane, Eastway Library 985-8265 (Switchboard) or
Ingrid Smiets or Neill Roberts at Woodberry Down Library 800-4293

A full set of occupation tips in the next issue.

REVERSE THE

CLOSURES!

NEXT!

LOCAL AUTHORITY WORKERS' NETWORK

Produced by the London group.

CONTACTS:-

NORTH PO Box 96, Doncaster 4, South Yorkshire
SOUTH c/o 84b Whitechapel High Street, London E1

Next meeting is on Thursday 19th May at 17 Turners Road, London E3 at 8pm. All rebellious slaves welcome. All slave owners, would be owners and spies are not.



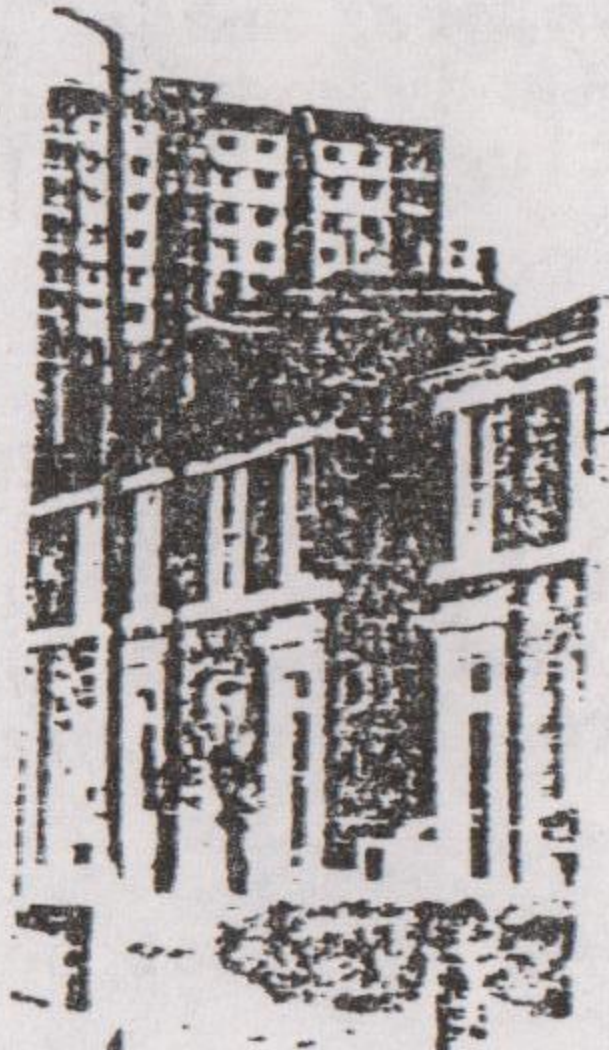
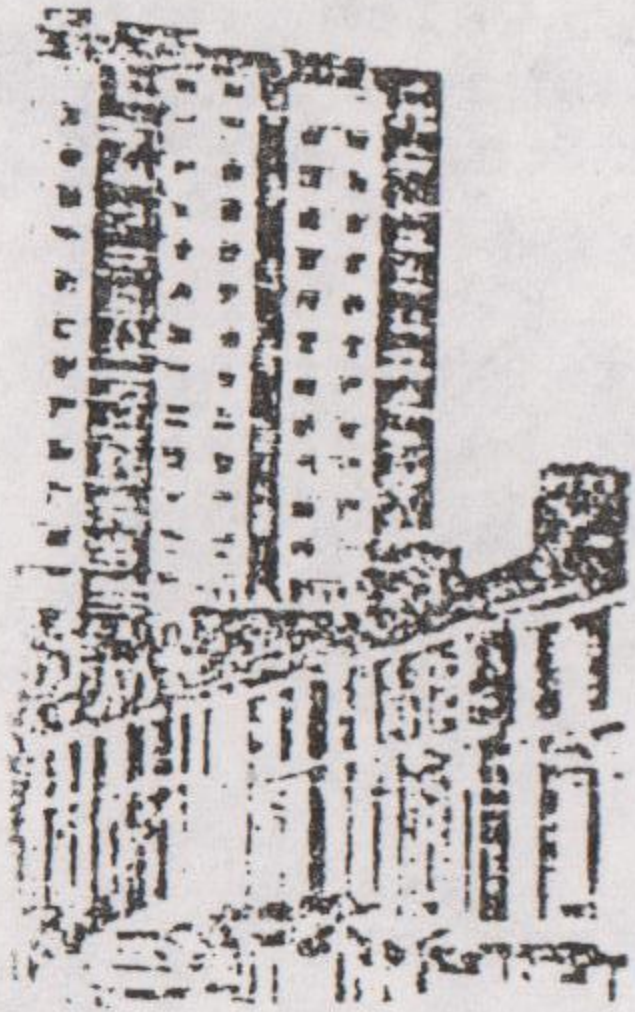
OCCUPY!

A building in South London part of the Geoffrey Chaucer School annexe is being occupied at the moment by the Youth Club running there. In mid April, the building was taken over by Southwark Council, with the Youth Club members still in occupation.

This is the thin end of the wedge! It's clear that the ILEA break-up is already beginning, through the back door. It is being implemented by the same ILEA bureaucrats who send out 'caring' letters to ILEA employees, explaining that the situation is not good, but, of course, it's out of their hands. 'Blame the Tories' (we've heard that before!).

Occupations are the way ahead!

Meanwhile, some painters have been sacked outright, and letters have gone out to all employees suggesting that people offer themselves up for redundancies. Then the management decide whether they want to 'let people go'. Hmm.



WHAT IS MISSING
FROM THIS
PICTURE?
THE LIBRARY

FORCING A CLOSURE

The Tramshed is a popular venue in Wollwich. Among the events it puts on are comedy acts, jazz and rock bands. It has a very wide appeal. Labour run Greenwich Council have decided to cut the amount of funding it gives the Tramshed. The funding will drop from £33,000 to £18,000. This will mean the Tramshed will close down as it does not have enough money to survive. Meanwhile Greenwich Council have decided to keep funding The Albany Empire a venue in Deptford to the tune of £18,000. The Albany happens to be outside the borough. The difference between the two venues is quite simple, The Albany puts on events which have a political bias towards the Labour Party. The Tramshed on the other hand does not. Needless to say the Labour Council has decided it is worth closing down the venue that does not tow the party line.



STRIKE TO BEAT THE BIGOTS

The Campaign against Clause 28 - banning any attempt by local authorities to "intentionally promote homosexuality" - will soon move into the stage of non-implementation in the workplace. It will almost certainly become law in June.

The Clause, part of the Local Government Bill, openly threatens the Rights of Lesbians and Gay men, and will inevitably lead to an increase in violence against them.

The succesful demonstrations on January 9th, February 20th, April 20th and April 30th have shown the strength of anger against the Clause. However, despite this, the Clause looks set to become law. This makes it all the more important to organise campaigns within council workers' unions aimed at non-implementation, and support for those victimised for upholding such policies. NALGO has a national conference policy to support non-implementation of all aspects of the Bill. This must be joined by Local Teachers Associations and translated into action.

Teachers in Bradford recently struck in support of a teacher sacked by the LEA, for answering students' questions about homosexuality. He was reinstated, following a climbdown by Bradford LEA. This shows how Clause 28 can be fought when it becomes law. Teachers, and indeed all council workers, must have the confidence that colleagues will support them with industrial action.

