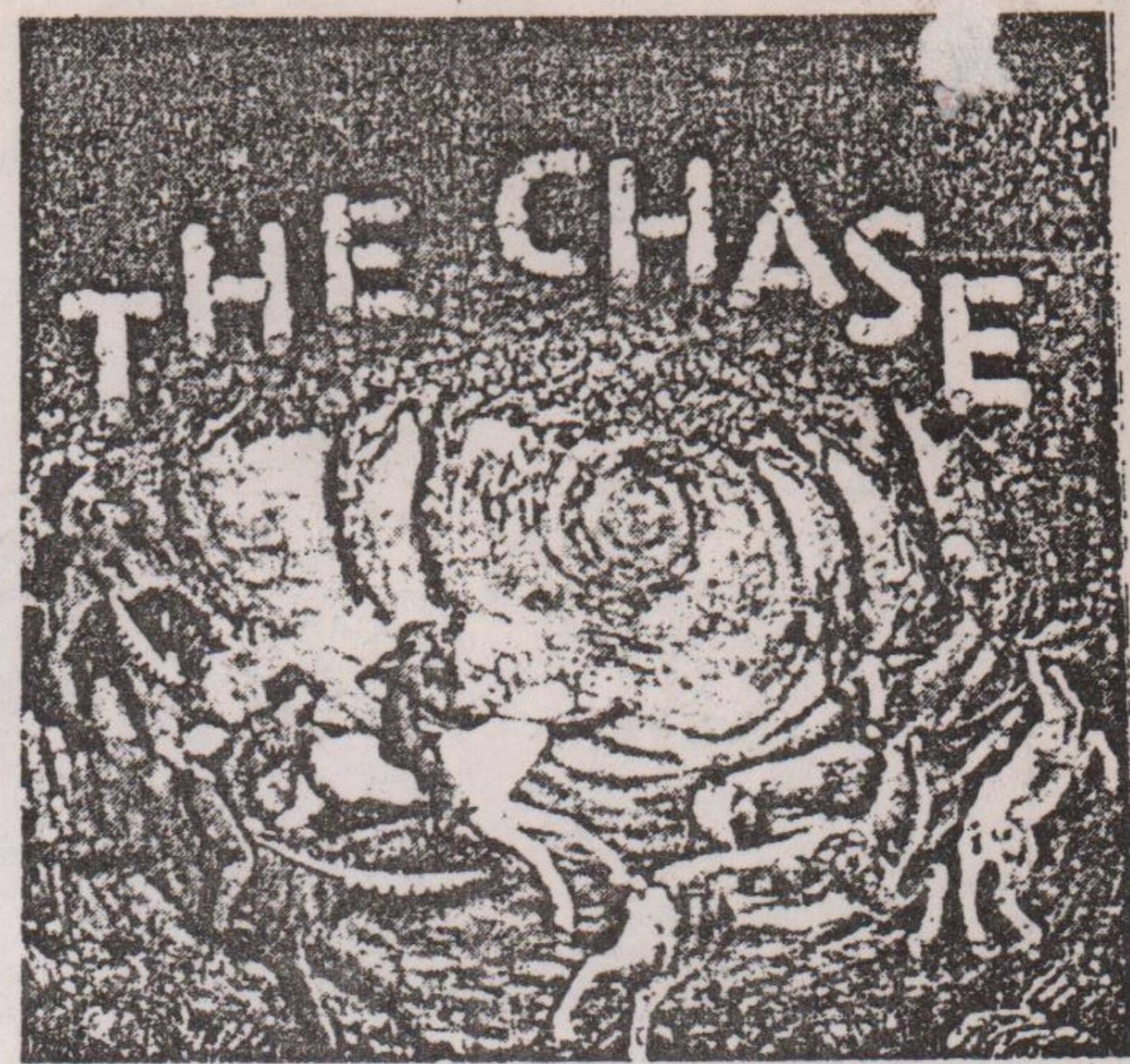


# ST ANNS NEWS



ISSUE SEVEN



FULL DETAILS ON PAGE 4

\* INSIDE \*\* INSIDE \*\* INSIDE \*\* INSIDE \*\* INSIDE \*

## DISTRICT HEATING EXCLUSIVE

by RON BELL

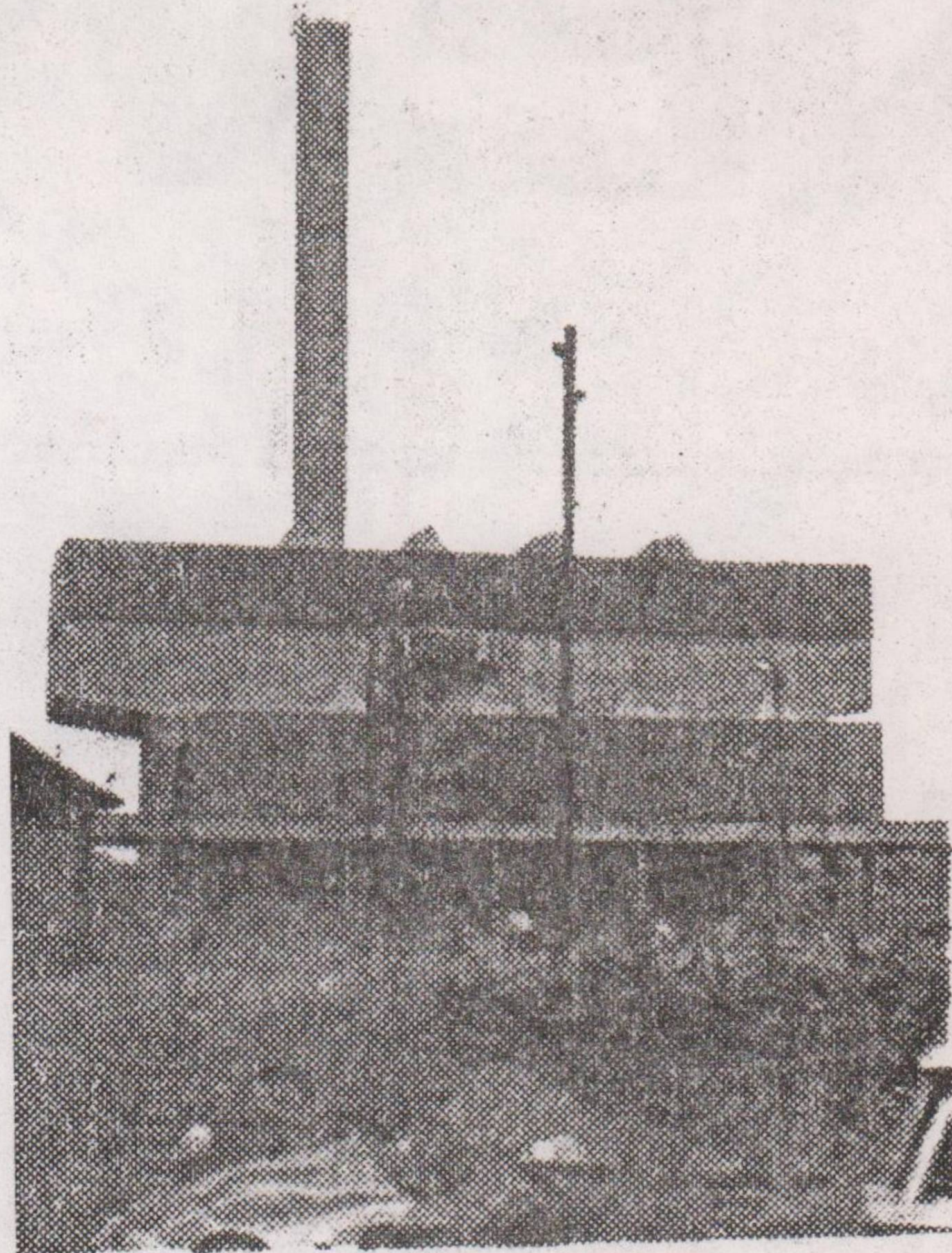
## DISTRICT HEATING FINAL DRAFT REPORT by RON BELL

W.S. Atkins & Partners, the firm appointed to carry out an independent investigation into the controversial district heating scheme, have now produced their draft final report. St Anns News can exclusively reveal some of the recommendations put forward by W.S. Atkins in their reports. These are as follows :-

- \* TIME CLOCK CONTROLS
- \* RADIATORS IN ALL BEDROOMS
- \* NEW METERING SYSTEM (Either flow meters or electronically operated pre-payment meters)
- \* REDUCTION IN STANDING CHARGE TO £39

W.S. Atkins say that a reduction in the standing charge will mean that the present unit price will increase from 26p a therm to 49.7p a therm. They point out that this will result in cheaper overall heating charges for low consumers but dearer ones for high consumers.

This draft final report has now gone to the three main parties - Nottingham City Council, Notts. County Council and British Coal - for their comments. The final report will be published in the

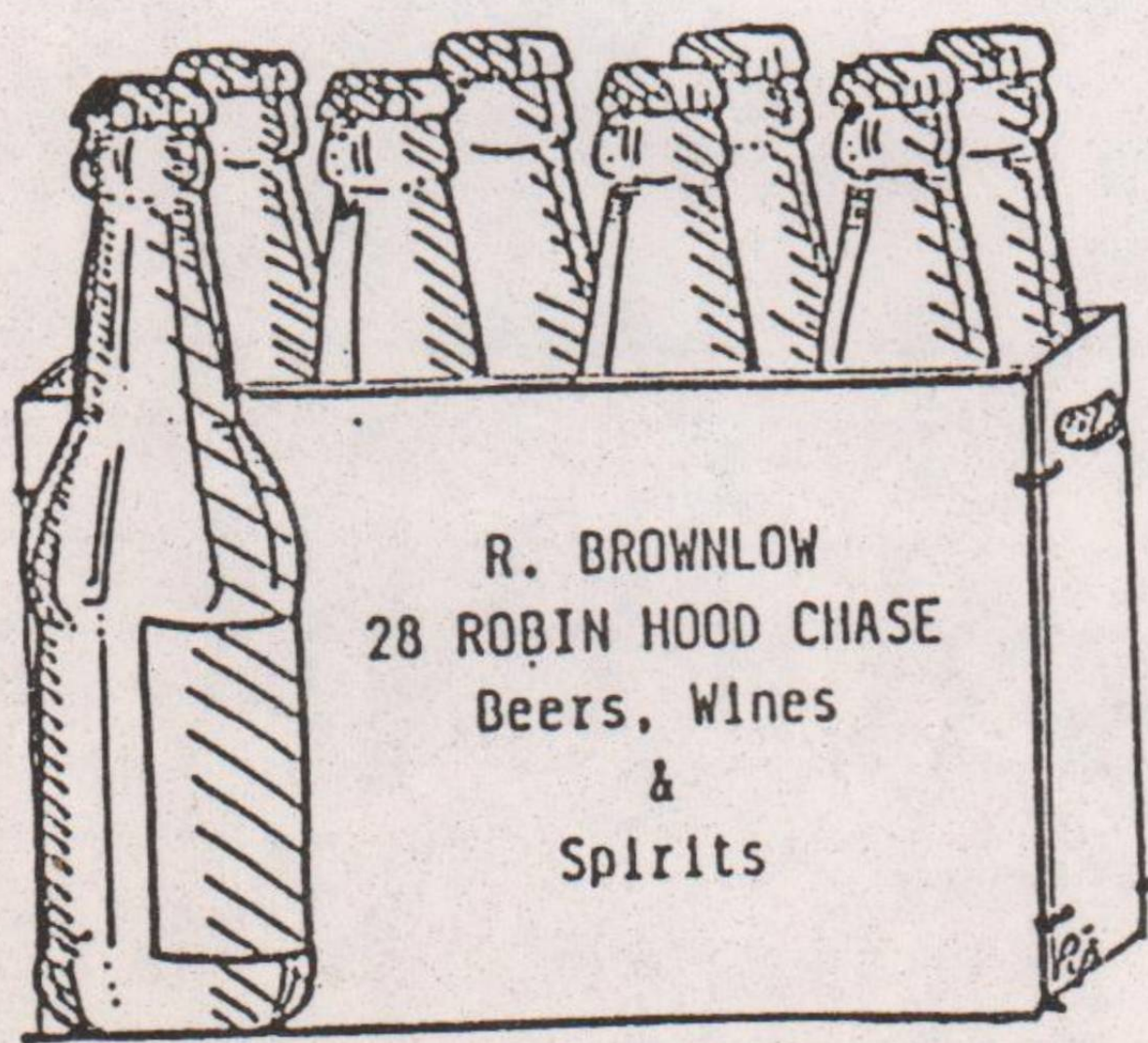


next couple of months. St Anns Heating Group (STAHG) have been campaigning against the district heating scheme for the past three years and have fought to get this present investigation. They have engaged an engineer to give technical advice on the W.S. Atkins reports.

Having studied the draft final report, STAHG are concerned that W.S. Atkins have failed to tackle one of the most important issues - the current level of charges for district heating.

STAHGs technical advisor has informed the group that the current level of pre-payment charges are twice as much as they should be. The pre-payment charges are based on the number of therms needed to heat a flat or house. However, STAHG believe that British Coal have overestimated this number by 100%!

If this point can be proved then the way is open for tenants to sue British Coal for overcharging over the years. STAHGs heating engineer has now written to W.S. Atkins urging them to address this important issue in their final report.



## ACNA CENTRE 6 MONTHS AFTER THE FIRE

by John Aghoghogbe

On the 8th of January of this year - for those of us who can still remember - two arsonists struck down our local ACNA (Afro-Caribbean National Artistic) centre causing extensive damage. The building stands roofless, burnt down and the cindered crossbeams crying out for replacement.

At the time of the attack the ethnic minority community and local community did extremely well to contain their bitter, angry feelings to see this beloved communal centre so wilfully and defencelessly abused.

I went to interview the centre manager, Mr G. Powe, to find out more about the centre and why renovation has taken so long.

"The building is a listed building which needs to be put back as it was. The delay in starting renovation work has been because of the difficulty in finding specialist firms to take on the work. A technical meeting was held recently between the necessary bodies to discuss details of the renovation process."

That meeting produced an agreement with the cost of renovation amounting to a total of £194 000, not including contents. Work is to begin on 1 July 1987 and scheduled to take six to seven months.

The ACNA Centre is a registered company formed in 1969, primarily to acquire premises to house black organisations in the city. Originally sited at 121 Derby Road, until moving in 1977 to Hungerhill Road, St Anns and officially opening in September 1978.

The philosophy behind the motivation of the centre is to promote the cultural and educational enlightenment of its members, cultural understanding between persons of all races and creeds as well as facilitating social intercourse between members. Mr G. Powe said 'More than 2000 people, a large majority of which are members, are involved weekly in

one form or another with the centre. Since being an established centre in 1979 it aims to serve the needs of its' members and the community. There exists an Old Age Pensioners luncheon club, supplementary school, a surgery to deal with aspects of peoples problems such as immigration and so on, a welfare rights office, seminar activity, leisure activities and a social club. This is but a sample of the exciting opportunities open to the public at their disposal. One major feature of ACNA is its joint employment agency with JIPAC that provides employment to people throughout Nottingham and particularly those in the St Anns area.'

Mr Powe proudly said that 'ACNA Centre, being the first centre of its kind in England receive visitors from different parts of the county who come to find out how and why the centre has been made viable in its' running technique.

As always, organisations of this kind have problems, especially when located in the heart of the community, and to this, Mr Powe answered,

"protests have come from all quarters, such as neighbours complaining of the centre being noisy and a nuisance in the community. The city council has backed up these complaints, but strong support coming from the residents have helped overcome these problems.

The ACNA centre is open and accessible to all members of the public, of all cultures and race. It is unfortunate that most of the white members of the public have the preconceived notion that it is confined only to the black community. The centre welcomes all to join and participate freely in its activities.

ACNA centre is very much part of our community and we hope all goes well and it is closed no longer than we need endure.

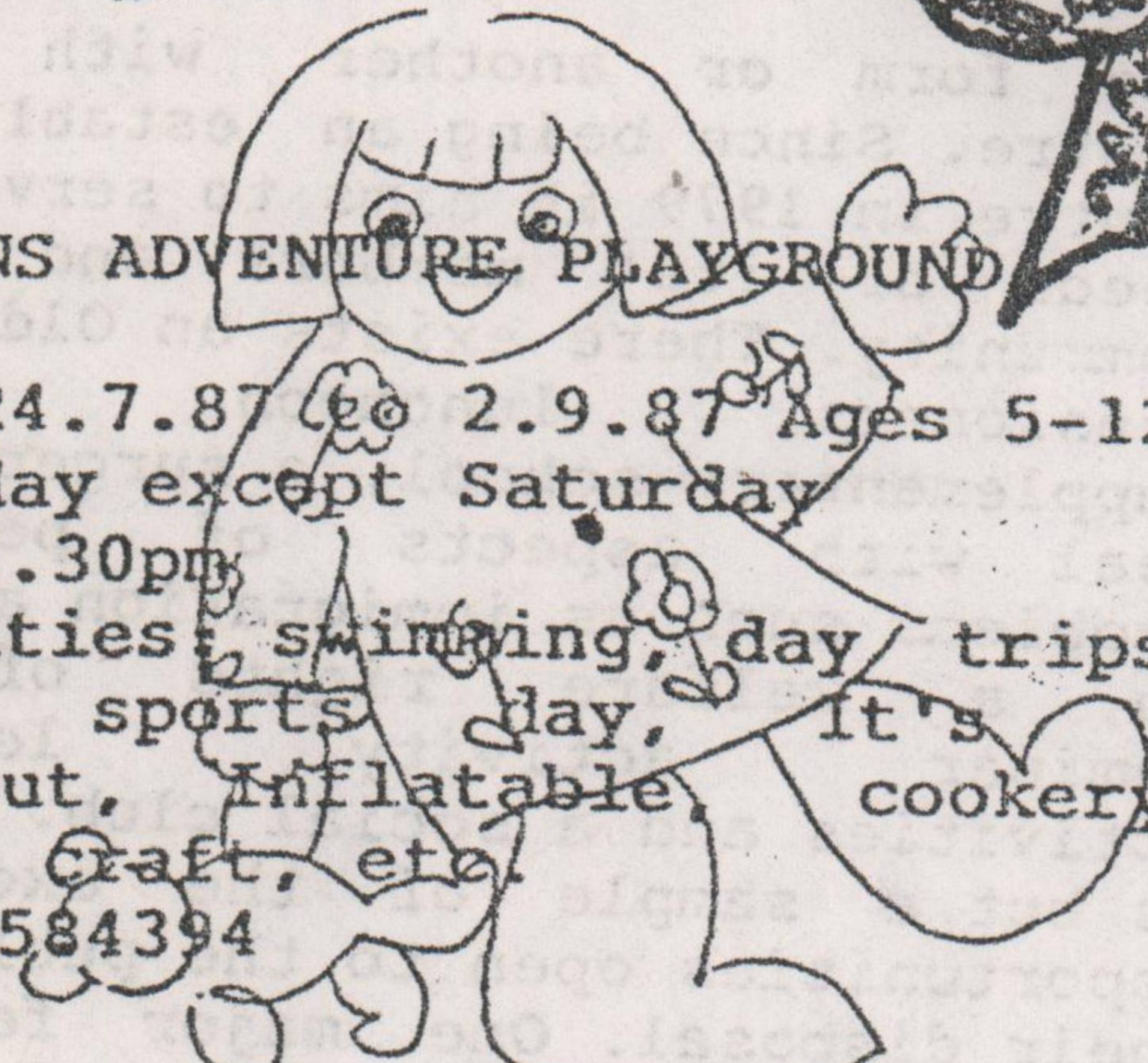
# PLAYSCHEME



## ST ANNS ADVENTURE PLAYGROUND

From 24.7.87 to 2.9.87 Ages 5-12  
Everyday except Saturday

10am-4.30pm  
Activities: swimming, day trips,  
silly sports day, it's A  
Knockout, Inflatables, cookery,  
arts & Craft, etc.  
Phone 584394



## WELLS COMMUNITY CENTRE

Starts August 4th for four weeks  
Ages 5-11, under 5 with parents  
Tues. & Thurs 10am-12 noon  
1pm-3pm

Day trips every Wednesday to  
Wollaton Park, Sherwood Forest,  
Sundown Pools, Corner & Drayton  
Manor Park consecutively.

## PAKISTAN CENTRE

From 2nd-15th August 9am-5pm  
Tel: 582973

## UKAIDI COMMUNITY LINK

From 10th August - 21st August  
11.30am-3.30pm  
Tel: 585466

## ST EDWARDS R.C. SCHOOL

From 26th July. One week only  
Morning or afternoon

## STONEBRIDGE CITY FARM

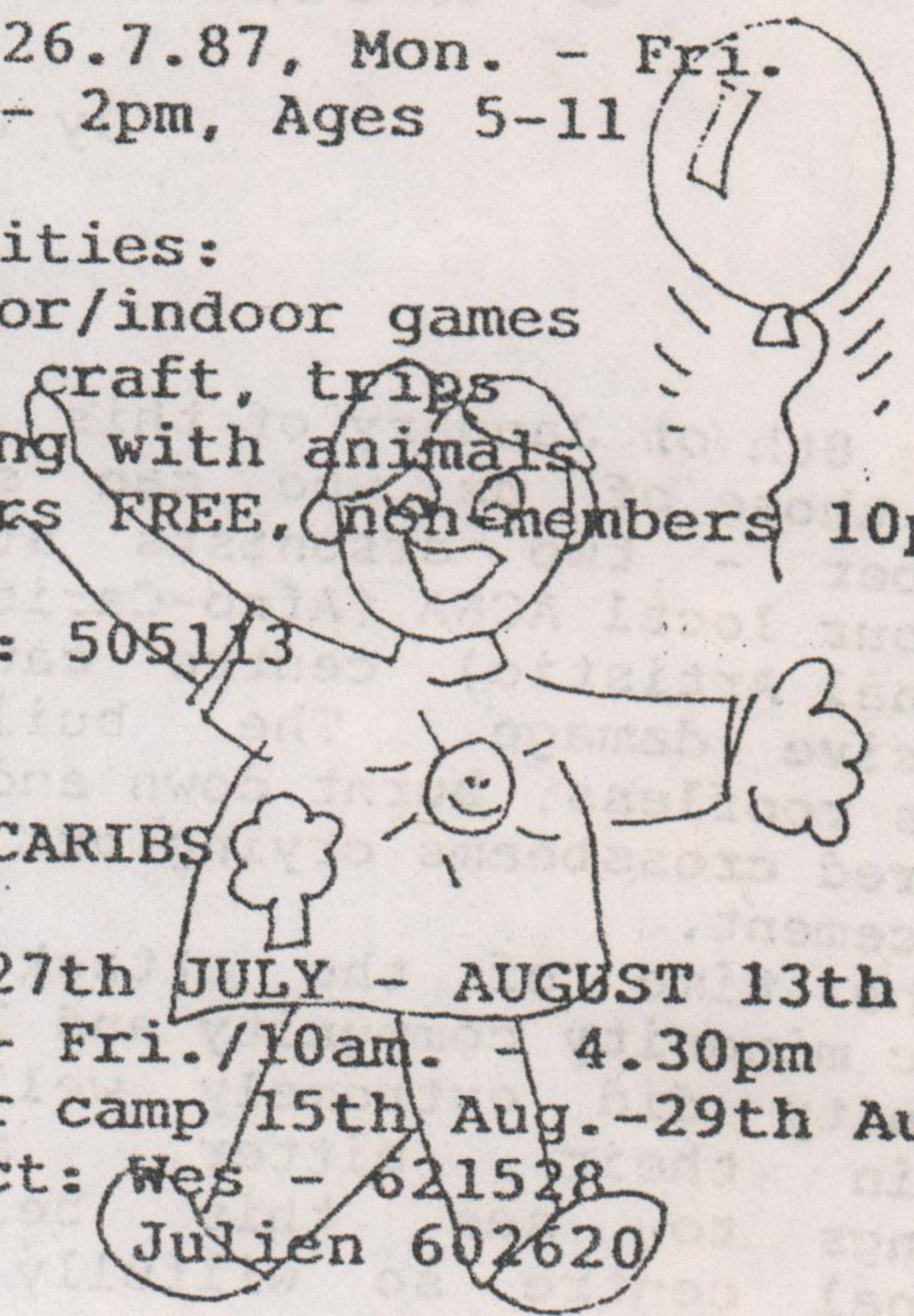
From 26.7.87, Mon. - Fri.  
10am - 2pm, Ages 5-11

Activities:  
outdoor/indoor games  
art & craft, trips  
working with animals  
members FREE, non-members 10p

Phone: 505113

## AFRO-CARIBS

From 27th JULY - AUGUST 13th  
Mon. - Fri./10am. - 4.30pm  
Summer camp 15th Aug.-29th Aug.  
Contact: Wes - 621528  
Julien 602620



## SEVENTH DAY ADVENTIST CHURCH

From 24th-27th August/10am-4pm

## MANVERS SECONDARY SCHOOL

One week only from 26-7-87  
Morning or afternoon

## NOTTINGHAM SOCIETY for the DEAF

From 28th July - 25th August  
10am-4pm  
Tel: 700516

CHASE FISH BAR  
11.30 - 2pm Monday to Saturday  
7 - 11.30pm Monday to Thursday  
Weekend 7 - 12pm

FOR LEGAL ADVICE CONTACT

**FREETH CARTWRIGHT & SKETCHLEY**

WILLOUGHBY HOUSE

20 LOW PAVEMENT

NOTTINGHAM

TEL: 506861

EMERGENCY NO: 472287

LEGAL AID  
SCHEME

FREE INITIAL  
INTERVIEW

QUALIFIED ADVICE  
ON ALL LEGAL MATTERS

including:

THE DISTRICT HEATING SCHEME

WELFARE BENEFITS

EMPLOYMENT

ACCIDENT CLAIMS

HOUSING

CRIMINAL MATTERS

DIVORCE

TASTY WHOLESOME SNACKS  
LUNCHTIMES AT CLINTON ST WEST

**VEGGIES**

10% OFF WITH THIS ADVERT  
TEL: 585666 FOR FREEZER SERVICE

**D. B. M. TRANSPORT**

A BETTER REMOVAL & LIGHT HAULAGE  
SERVICE, ANYTIME, ANYWHERE

- \* D.H.S.S. WELCOME
- \* CONTRACTS WELCOME
- \* FREE ESTIMATES
- \* ALSO SINGLE ITEM & HOUSE CLEARANCE



**NOTTINGHAM 706018**  
**822356**

**J & A CARPETS**

142 SREINTON DALE  
TEL: 580562

NOTTINGHAM  
ESTABLISHED 1972

CARPETS FROM £1.95 SQR. YD.  
CUSHION FLOOR FROM £2.45 SQR. YD

EXPERT FITTING SERVICES AVAILABLE

NO DEPOSIT TERMS ON  
WEEKLY COLLECTION SERVICE  
WRITTEN DETAILS ON REQUEST

**ALSO**

FULL RANGE OF DIVAN BEDS  
AT DISCOUNT PRICES  
FROM £39.00 (SINGLE)  
£99.00 (DOUBLE)

FREE LOCAL DELIVERY

DHSS GIRO CHEQUES ACCEPTED

FOR IMMEDIATE ESTIMATE  
WITHOUT OBLIGATION CALL  
OR TEL. THE ABOVE NUMBER

CLOSED ALL DAY THURSDAY

BUTCHERS  
J & RW FLINT  
Off Licence  
GENERAL STORE  
8 RANSOM Rd

OPEN  
8 am  
TO  
9.30 pm  
everyday

S. & C. AGYEPONG  
The friendly  
and helpful  
NEWSAGENTS  
77 The Wells Road

KIDS CORNER

# in control

I liked it when Sarah jumped off the boxes

I thought it was great and the cart wheels

bit was great and the high ladders bit was quite good and when

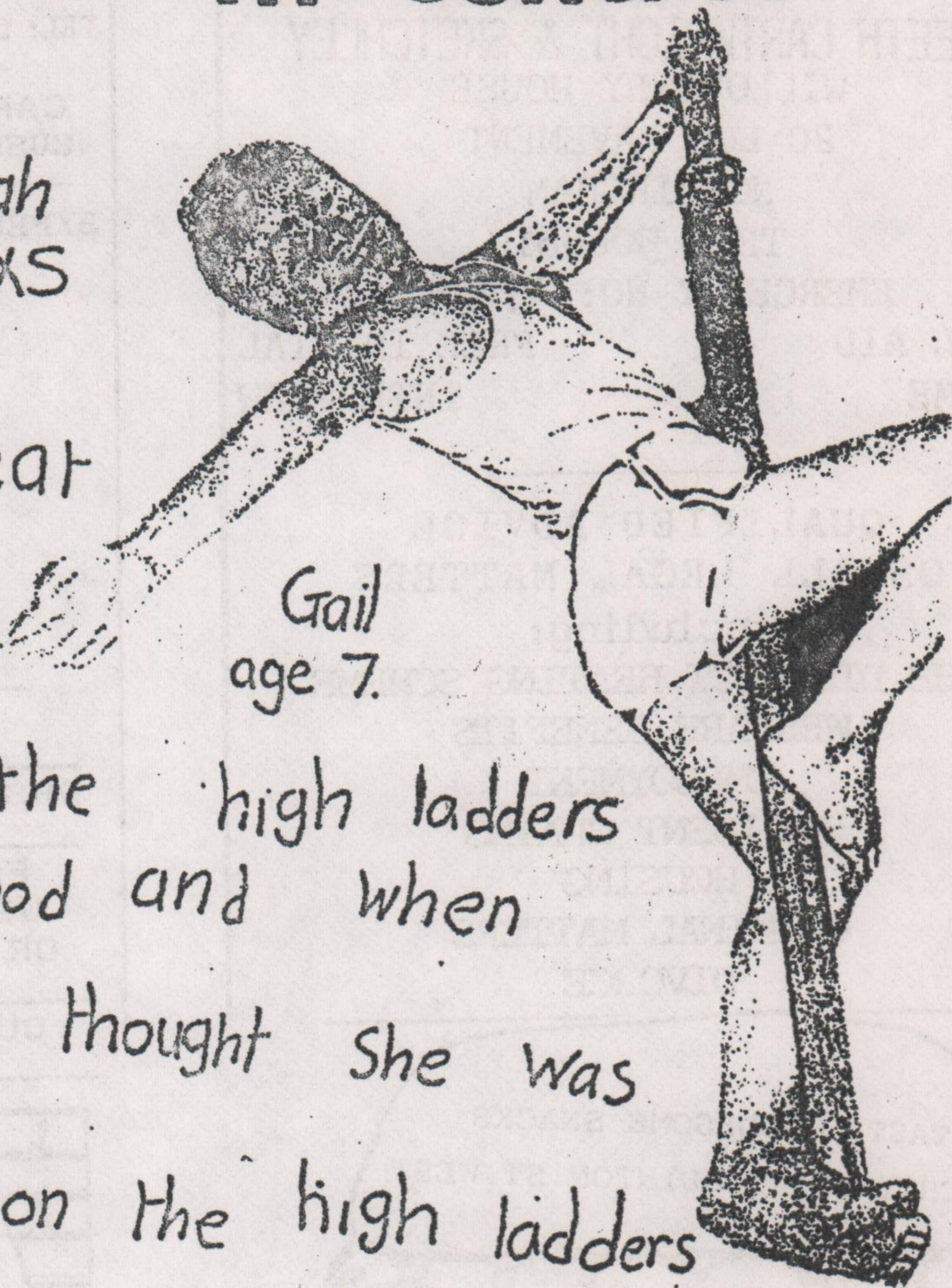
I saw Coralene I thought she was clever enough to go on the high ladders

there was gymnastics there was lots of mums and Dads to see it

I liked the muscles

because they had weight lifters and Jerome lifted the big one up we did some singing and gymnastics and we jogged round the track six times to get some money for hot countries.

David Bell  
age 6

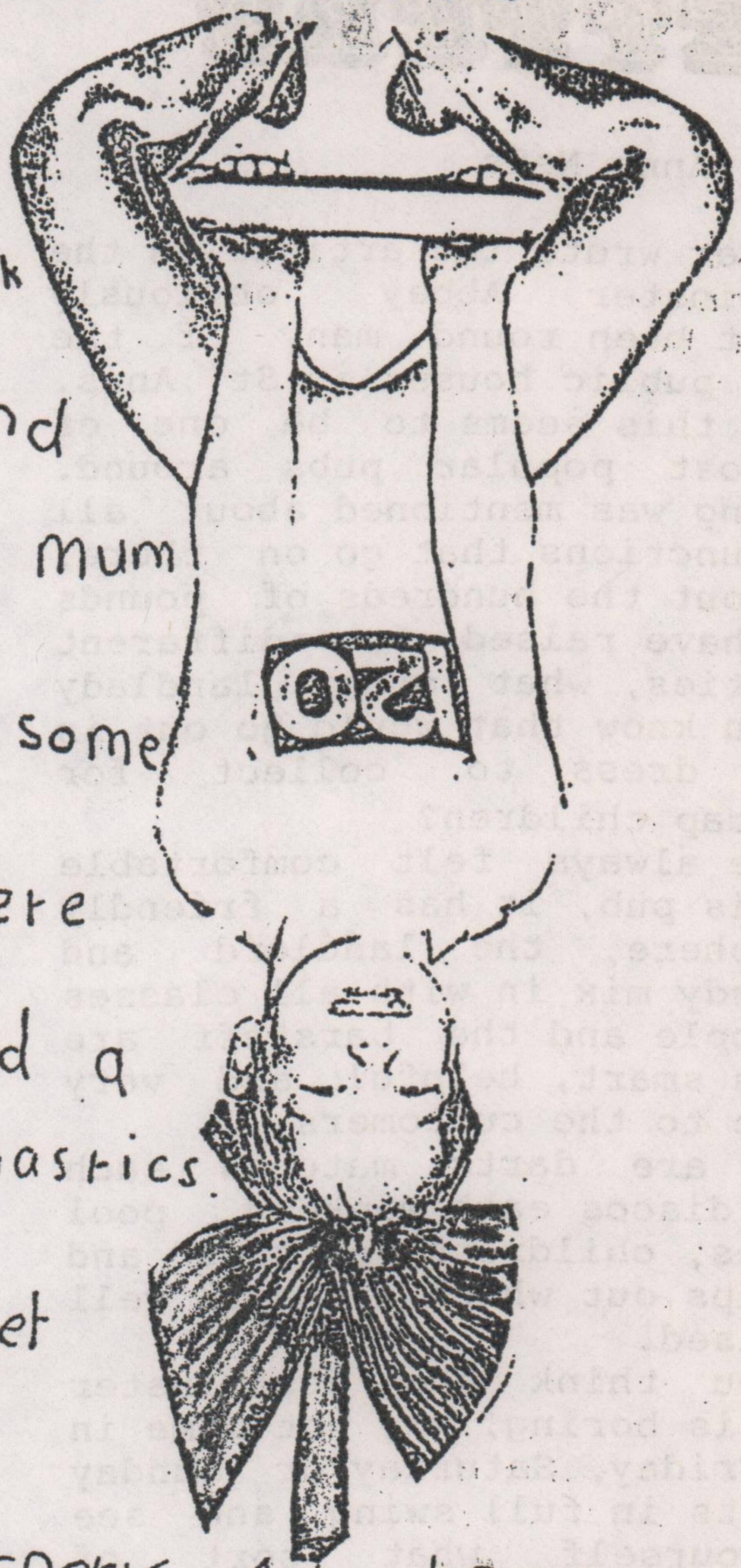


Gail  
age 7.



# ST ANNS WELL INFANT SCHOOL

on Friday we did sports  
 and 1000 there was floor work  
 and a pole and a bar and  
 some boxes and all the mum  
 and dads has to put some  
 money in the boxes there  
 was some ladders and a  
 balancing bar and gymnastics.



Janet  
 Page 7



We had sports Aid 1000

on Friday and I like gymnastics  
 because they do some vaults

and I saw John climbing the  
 pole and Mums and Dads was

clapping and we sang lots of  
 songs and music

Philip

# LETTERS

To St Anns News

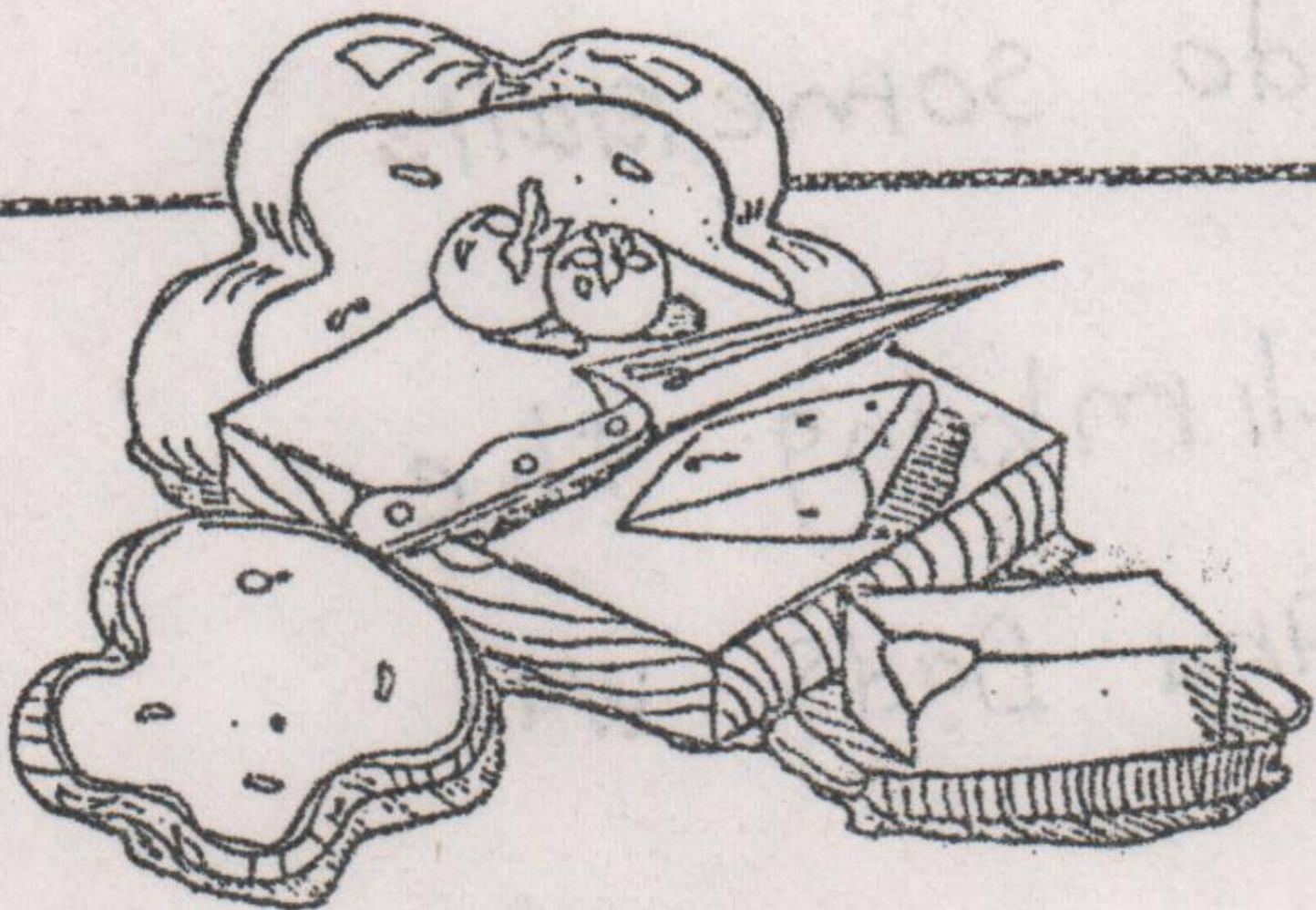
Whoever wrote the article on the Westminster Abbey obviously hasn't been round many of the other public houses in St Anns. To me this seems to be one of the most popular pubs around. Nothing was mentioned about all the functions that go on there, or about the hundreds of pounds they have raised for different charities, what other landlady do you know that would go out in fancy dress to collect for handicap children?

I have always felt comfortable in this pub, it has a friendly atmosphere, the landlord and landlady mix in with all classes of people and the barstaff are always smart, helpful and very polite to the customers.

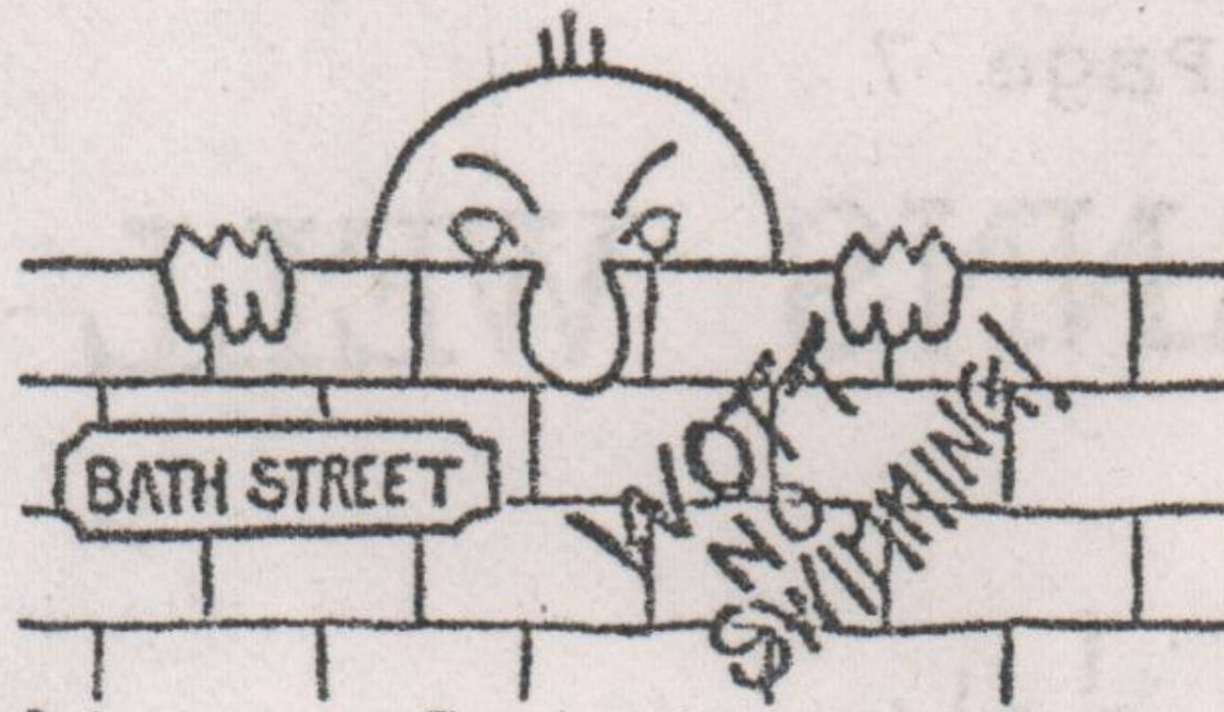
There are darts matches each week, discos each weekend, pool matches, childrens parties and daytrips out which are all well organised.

If you think the Westminster Abbey is boring, why not come in on a Friday, Saturday or Sunday when its in full swing and see for yourself what sort of establishment this really is? I think you'll be quite surprised.

W. Dickinson  
14 Hudson St  
Gordon Rd



CHASE  
FOODMARKET  
10 ROBIN HOOD CHASE  
TELEPHONE: 501500



There will be no swimming at Victoria Leisure Centre until September due to alterations.



WANTED

Keen under 13s  
If interested  
Contact N. Rozee 502919

## LOOK INN

We visited the Pint & Pot on St Anns Well Road on a Saturday evening. It's a big, spacious pub, made cosier by low ceilings and muted lighting. Although there were quite a lot of people there, it didn't look crowded. We liked this, as it meant we got served quickly and found seats easily. On the other hand, if you want an exciting, lively pub, or one with 'character' then this isn't the one for you. The seating was in good condition and very comfy, and the juke box wasn't too loud. The toilets were clean but unfortunately had no toilet paper. There are seats outside, a playground nearby, and children are allowed in on weekday lunchtimes. It's possible to take a wheelchair up the small step, and we were pleased to see special toilets provided for people with disabilities.

And a most important point - the Mansfield bitter (at 77p a pint) was fine.