

City Issues

DERBY'S ALTERNATIVE NEWSPAPER

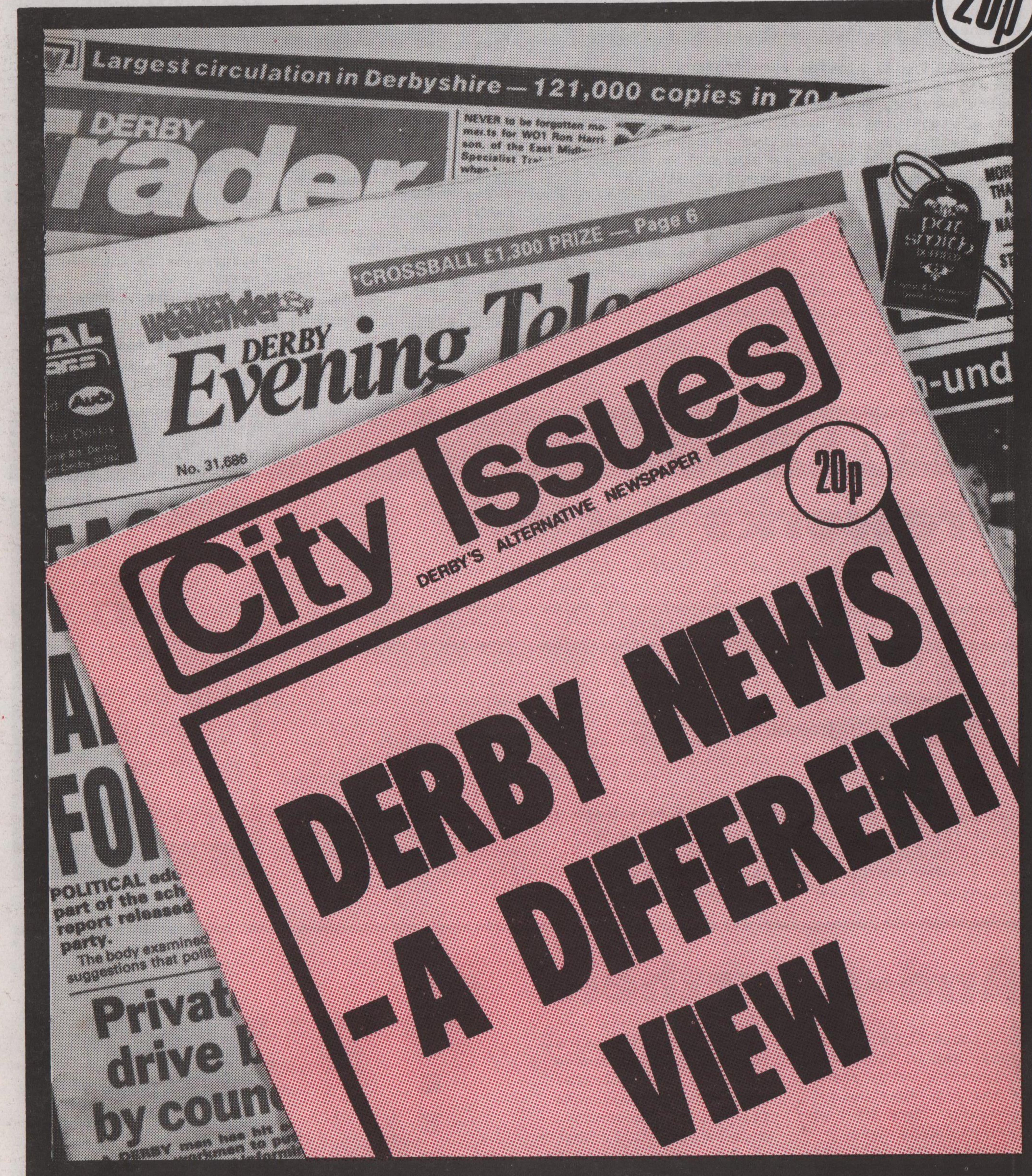
Now you've read the first City Issues, help us produce the second. We need people to write articles, take photos, help with the layout, and to sell and distribute it.

Come along to our editorial meetings - Mondays at 7.00pm at the Print Workshop, 1 Co-operative Street or ring Derby 48154.

City Issues

no.1
DERBY'S ALTERNATIVE NEWSPAPER

20p



QUEEN MARY CLOSURE ■ PENSIONERS ORGANISE
LOCAL UNEMPLOYMENT ■ QUALCAST POLLUTION
PLUS WHAT'S ON IN DERBY

EDITORIAL

What is City Issues?

CITY ISSUES is Derby's new alternative newspaper - an alternative to the existing local papers because it reports news and issues that don't get a look in elsewhere or are merely given lip-service.

CITY ISSUES will provide a mouthpiece for groups campaigning for better houses and homes, a decent Health Service, the right to work, improved education, a bigger say in local government, more control over their lives, for equality of opportunity, an end to sexism and racism, a pleasant environment and a peaceful, safe, co-operative city.

CITY ISSUES is written and produced by people involved in these struggles - not by professional journalists. Our meetings are open to anyone interested in these issues and we will only be successful if YOU contribute to the paper. We want you to tip us off about what's going on in Derby or write news stories.

You've made a start by buying the paper - NOW COME AND JOIN US!

PRINTED BY RAMOTH,
NOTTINGHAM.

ADVERTISING RATES:
Classified Ads - 5p/word,
25p/Box no. Commercial
Ads - Rates given on
request. All What's On,
City Dates - Free.

EDITORIAL MEETINGS:
Every Monday 7.00pm at
Derby Community Print
Workshop, 1 Co-operative
Street, Normanton.
Everyone who wants to
help is welcome.

NEXT ISSUE:
Deadline for all copy:
articles, graphics and
adverts is 28th November.

THANKS FOR DONATIONS TO:

Claire Torkington
Polly Laurance
Simon Bennett
Margaret Mansfield
Robin Wood
Phillip Whitehead
Harry Pearce
Ann Morisy
Tina Glover
British Pensioners'
Action Group
Derby Trades Council
Derby and Burton Branch
of the NUJ
Blagreaves Ward Labour
Party
Alvaston Ward Labour Party
Kingsway Ward Labour Party

Also to the many other
donors who wished to
remain anonymous.

NEWS

Fireworks Factory

The emptying of Red Stars into a packing box - the procedure which was thought most likely to have caused the latest accident at the Church Wilne pyrotechnics factory - has now stopped.

Mr John Kent, Managing Director of Hales and Weller, said the factory is now looking for an alternative substance that would give the same effect for Roman Candles, if this cannot be found then a safer process for dealing with the stars

will be sought. Prohibition notices had been served on the Hales and Weller works for this procedure, by the explosives inspector of the Health and Safety Executive, Mr Alan Duckworth. The accident was the third in twelve months at the factory but the inspector is now reasonably satisfied with the general level of safety there and the improvements that have been made. Staff, too, have noticed an increase in the number

of safety precautions, since the most recent accident in June. However, a note of caution from the inspector was that any factory, especially one which is involved in a multitude of operations as the pyrotechnics factory is, does run a high safety risk. A sobering thought indeed for those carrying out the operations, despite the comprehensive safety precautions the company has made to protect its staff.

Derby and Burton
Branch of the
NUJ
wish
City Issues well
and give it
their full
support

Anti-Apartheid

On October 6th a group of people met in Mickleover to launch a Derby branch of the Anti-Apartheid Movement. More than one hundred people have expressed interest, and the group intends to hold a public meeting with a speaker from South Africa late in January.

Ron Moodley of the group said, "The time has come for us in Derby to stand up and be counted with the

rest of humanity against the evil and oppressive regime of South Africa. A regime which prevents its people from sharing what is rightfully theirs and what is right where it is going wrong."

For further information contact Moira Harnett (Derby 381174) or Ron Moodley (Derby 518181).



NEWS

PENSIONERS ORGANISED

The organisers of the Pensioners Action Day

Wednesday 28th September was National Pensioners Action Day. Throughout the country pensioners from many different organisations voiced their protest at a Government which has failed to increase pensions in line with rising fuel and food prices.

In Derby, pensioners from organisations such as the Transport and General Retired Members and the British Pensioners and Trade Unions Action Association held a rally in the Market Place. A float kindly loaned by the East Midlands Co-operative Society formed the centre-piece of the display, and the day's events included music by a retired pensioners band, led by Mr Varney, and speeches by Margaret Beckett, MP; Mrs Woods, Lady Mayor of Derby; Councillor Bob Newton; Phillip Whitehead and the Reverend C. Bowles, Bishop of Derby. The major aim of the day was to publicise pensioners demands and obtain signatures for a petition demanding the implementation of the Declaration of Intent. More than 2,500 signatures were obtained.

DECLARATION OF INTENT

The 'Declaration of Intent' or Pensioners Charter is list of demands which request that pensioners have a right to choice, dignity, independence and security. The demands include that all pensioners should as of right



have access to:

- A pension of not less than half average earnings for a married couple and not less than a third for a single person
- Plentiful, suitable accommodation
- Nationwide concessionary public transport schemes
- Comprehensive health care
- Affordable heating and lighting
- The full range of community and personal social services including home helps, meals on wheels etc.
- A regular tax-free Christmas bonus of £20 to rise in line with inflation



Pensioners in Derby and nationwide feel that these demands are not unreasonable as they are already accepted in other countries. The British state pension is already below that paid by other countries in the E.E.C.

The Derby branch of the British Pensioners and Trade Unions Action Association was formed in March 1982 after the National Secretary, Fred Baker, spoke of the need for local

groups. A meeting was held in the Council House, a committee was formed and volunteers appointed.

Initially members numbered 25 - the register now shows 147 names from as far apart as Ashbourne and Salford.

The British Pensioners meet in the Council House at 2pm. on the first Wednesday of each month. The membership fee is 50p yearly. All pensioners are made very welcome.

WARNING GOVERNMENTS CAN SERIOUSLY DAMAGE YOUR HEALTH

QUEEN MARY CLOSURE - AN END TO CHOICE

For many years a favorite activity of government has been re-organising the Health Service, generally with a view to increasing efficiency. Success or failure in this activity is open to debate but one essential feature has come out all the attempts at what is usually termed "development".

CENTRALISATION

Proposals for the "development" of South Derbyshire Area Health Authority are now virtually complete and will involve the closure of the Queen Mary Maternity Hospital and the Women's Hospital. They are to be replaced by a purpose built block at the City Hospital. Robert Alderton, Chief Administrator for South Derbyshire AHA, has confirmed to City Issues that these developments are planned to be complete by 1985-86. The belief seems to be that centralisation of services is self-evidently a "good thing". The example of the Queen Mary raises doubts about this view.

An Action Committee has been set up to try and save the Queen Mary though their main concern is maintaining the choice of facility available to pregnant women. At present the Queen Mary offers both G.P. and Consultant units. The former allows a women to be attended by her own G.P. and/or Midwife and also to have a "domino" delivery where she goes into hospital for a matter of hours simply for the actual birth. G.P.'s themselves have been a little ambiguous supporting the



retention of facilities yet also backing the transfer to the City. In more recent months facilities have been provided for women in labour to move around and choose the position in which they wish to give birth. It is the fear of the Action Group and many mothers who have used or may wish to use the facilities that



the type of service provided at the Queen Mary will be lost in a transfer to the City Hospital. Many pregnant women who have used the City have complained of being treated as if they were ill rather than about to give birth. It is also true that the City is already understaffed in its present maternity unit.

CONCERN

Local Conservative M.P. Greg ("Silent") Knight has been helpful to the Action Group at a recent meeting but was clearly not fully aware of the RHA's plans. Edwina Curry M.P., perhaps seeing no publicity for herself in the issue, replied to the Action Group that as the Queen Mary was not in her constituency it was not really a matter for her. City Issues was unable to contact her for further comment. Margaret Beckett M.P. expressed concern over the consultative processes by which the decision to close the Queen Mary was being taken and showed herself sympathetic to the Action Group.

There may well be sound administrative and health care reasons for centralising maternity facilities at the City Hospital (it should be remembered that this is only a part of the Regional and Area Health Authority Developments) but the questions of quality and nature of provision and the related consultation processes are still to be adequately resolved.

THE NHS IN THEIR HANDS



Government Ministers rarely lie. They do however, have a view of reality which is generally not that shared by other mere mortals, and hence their version of the truth is often a little difficult to comprehend. Take for example the much stated view that "The Health Service is safe with us" as first coined by the Prime Minister during the election campaign earlier this year. The more recent announcement of 5,000 job cuts may appear to contradict the previous view. But does it?

WHAT KIND OF NHS

All of the many commitments to the Health Service made by the Secretary of State for Social Services, Norman Fowler and by the Prime Minister fail to state what kind of Health Service they intend to support. After all the United States has a Health Service but one which is only a minimum emergency provision for the poor - and the rules as to what constitutes poverty are strictly applied. The evidence suggests that we are heading on the same path with quality of health care being decided by how much patients can pay, down to a level below which the State will provide an emergency service.

Since the Tories came to office in 1979 cuts in health care facilities have taken place. This is not the view of the government but of those who work in the NHS and it is reasonable to assume that they should know more about it than members of a government who do not use the service. For example Norman Fowler argues that Health Service spending in "real terms" has increased, this is true (though he has not made this claim of the most recent wave of "cost cutting"). What he does not take into account is demographic change and new innovation which means that many Health Authorities have stood still in "real terms". (Demographic change is best illustrated by the steady increase in those over 75 requiring care who cost nine times as much per head than those of working ages, according to the DHSS, HMSO). At best the government claims a 1.5% increase in spending for 1982-83 which does not cover inflation or the above mentioned changes or the essential fact that the service was underfinanced and staffed in the first place. Now we are faced with cuts in staff. And let us not be misled by the announcement of an increase of 520 jobs for Trent Regional Health Authority (RHA). This is effectively a cut

because 1,100 jobs are required to meet the RHA's needs. Newly built facilities will be unopened through lack of doctors and nurses. These staff cuts come on top of budgetary restrictions which have already been met by keeping facilities closed, not filling vacancies and rationalisation. It should also be remembered that the present redundancies, which will involve doctors and nurses for the first time, are not being carried out to meet the finance targets but are on top of those targets.

The principle underlying the cuts is that of "improving efficiency" yet commonsense dictates that understaffed and underfinanced organisations will not be efficient.

PRIVATISATION

There is of course another means by which efficiency is said to be introduced namely, privatisation. It is claimed that laundry, cleaning and meals services can be run more cheaply by private companies. The drugs industry and its blatant profiteering suggests otherwise. We shall examine this more closely in future City Issues but for now it is sufficient to say that there is considerable doubt as to whether it

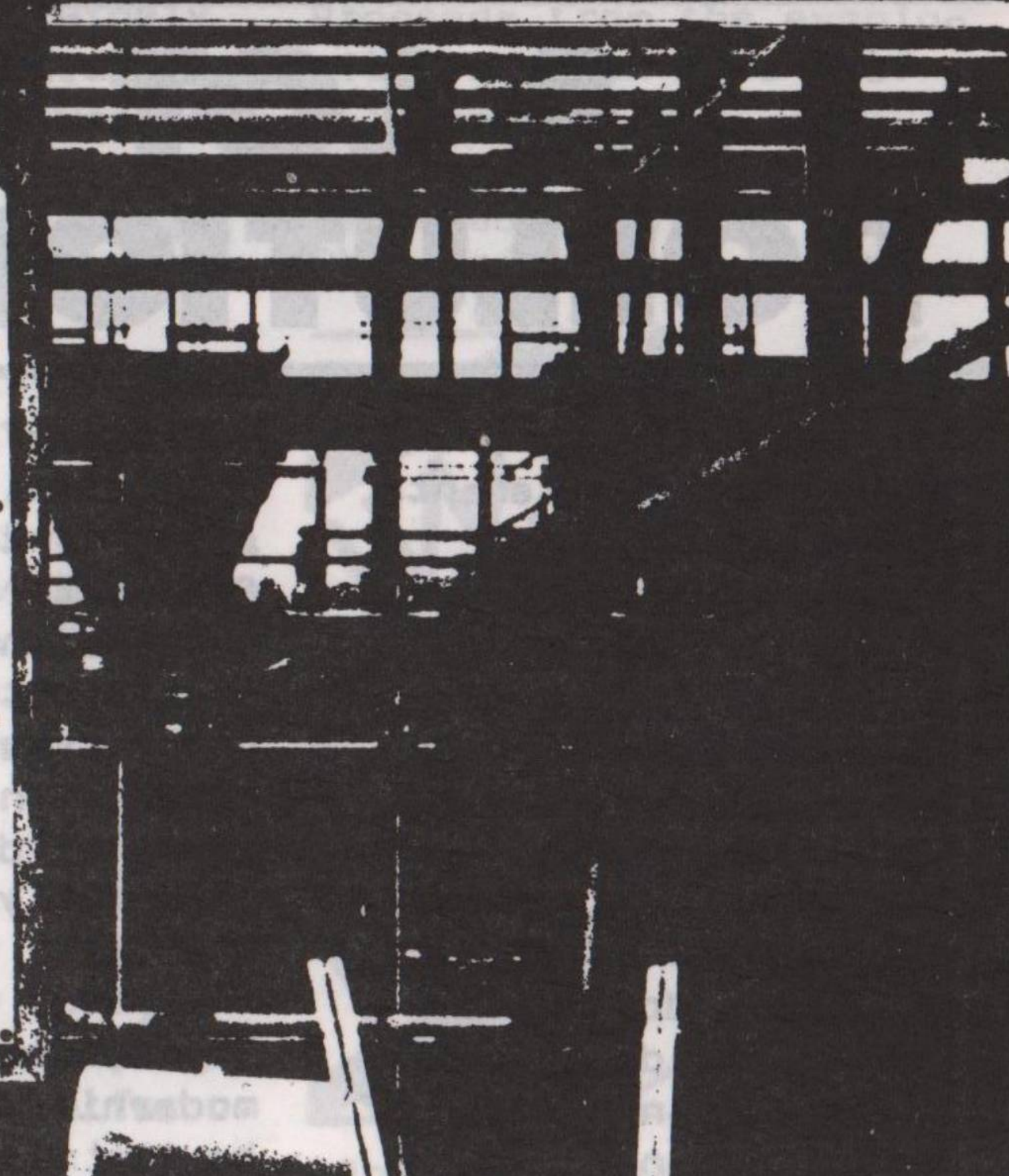
is more efficient and already absurd situations are cropping up! For example a recent Guardian article showed that the lowest tender for a Newcastle Area Health Authority laundry service came from Darlington AHA saving £100,000. The Health Minister stopped the contract because Darlington would have needed to take on 15 more staff. (These had been allowed for in the saving).

The fear must be that the days of the Country providing health care dependant on need and regardless of ability to pay are going and much has already gone.

Our Health Service to which we all contribute and which we all use is being reduced in size and

DECLINE

quality and no amount of government statistical juggling or monetarist rhetoric can show otherwise. Yet how much further must things decline before effective campaigns are waged at local and national level to defend the NHS and to defend the principle of a Health Service based on medical need. Within days money was found from taxation to fund a war in the Falklands, money is being found to buy Cruise and Trident missiles; is care for the sick, elderly and infirm less important? This government clearly thinks so.



NEWS

A LOT MORE BOVVER- POLLUTION FROM QUALCAST

Qualcast is a dirty word for many of the tenants on the Victory Road Estate. Every Thursday at the Qualcast foundry on Victory Road they 'open the vats', and a deposit of dust and a black oily film settle on everything on the estate. Net curtains get filthy, and people dry their washing inside to avoid the blackening effect of the pollution.

The effect of the pollution is felt right across the estate, especially when the wind blows from the south-west. And when it shifts to the south-east, the smell of unburnt kerosene from Rolls Royce's engine test-beds hangs in the air.

The worst affected houses are on Victory Road and Elm Tree Avenue, and the City Council is considering demolishing thirty-four of them. Of these, three are privately owned, bought by the tenants, and the rest belong to the Council.

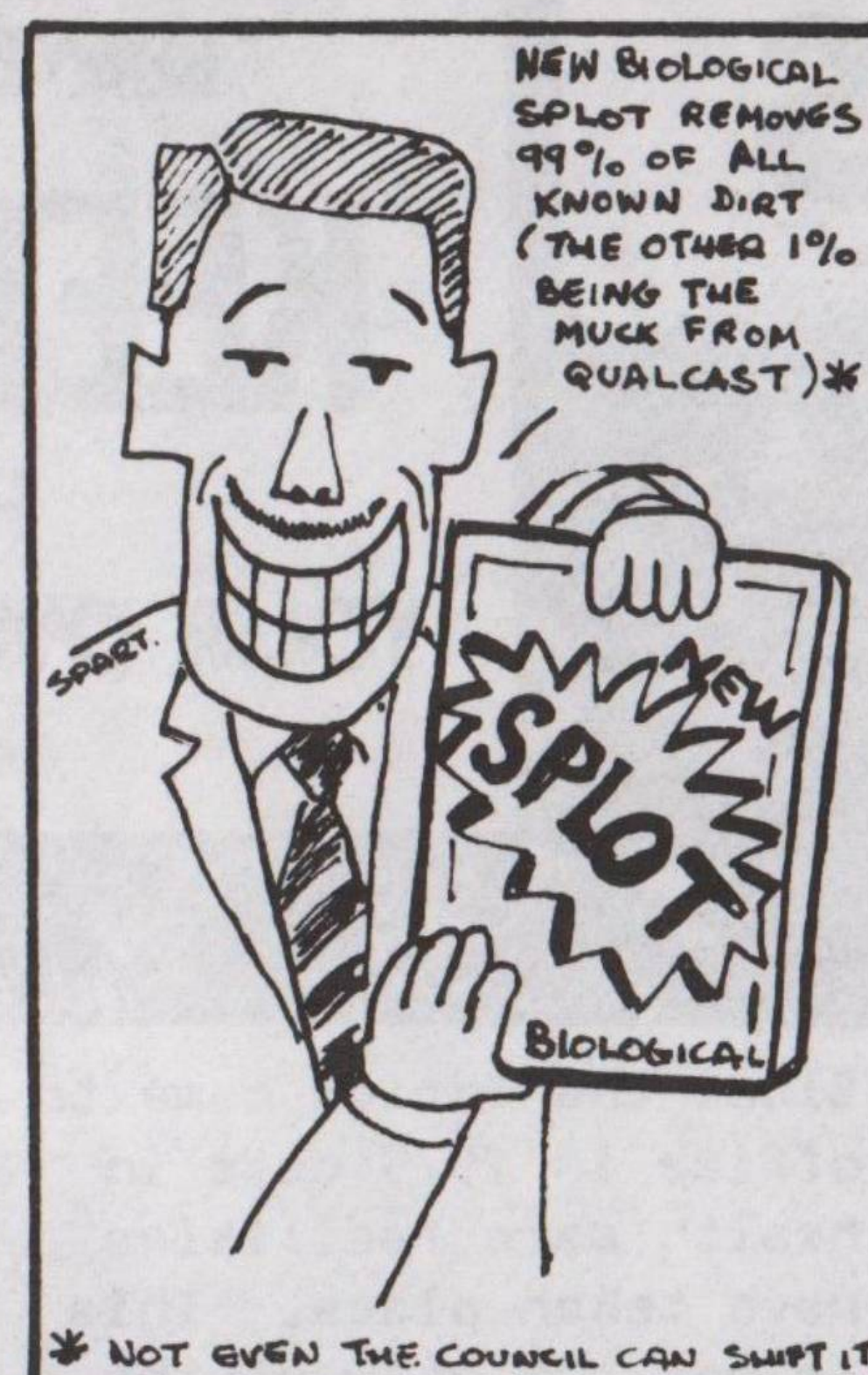
ILLNESS

The tenants' group on the estate is concerned with more than just the

visible effects of the pollution. A representative of the Osmaston Residents' Action Group told us that many people on the estate suffer from chest troubles. And any illness there is is made worse by dampness in these 62 year old council houses.

The estate is due for modernisation. It is to be the first of the Council's Priority Estate Projects, to be modernised completely, with improvements to the environment along the lines of Housing Action Areas in the Inner City. There will also be the opportunity for tenants to move out into spare houses while their own homes are being modernised.

To the tenants all this seems to have been held up. One shop-keeper told us that nothing appears to have happened. Members of the tenants' group say that they were told that work on immediate repairs would begin by the end of June, but nothing has happened yet. Councillor Justin Andersen, Chairman of the City Housing Committee said however, "Things are starting to happen."



Newsletters have gone out to the tenants, so they should be aware of the Council's programme."

NO COMMENT

The Managing Director of Qualcast refused to comment on the situation. The Housing Committee on 6th September decided in principle that the thirty four houses should come down, but as most of the tenants have stated they do not want to move, the Committee has told its officers to ask the tenants again and to give them information about the financial help

that would be available if they were rehoused.

Members of the tenants' group who rang the Council to find out if they could attend the meeting were told that it was closed to the public. In fact it was not closed except for one item about staffing in the Housing Department. Councillor Andersen said, "There's no way we would want to exclude tenants from discussions about their homes."

Work on modernising the estate is due to start next year, and the Housing Department will be opening its second Area Housing Office on the estate.

RUMOURS

On the estate, however, there seems to be a lot of uncertainty, with rumours that houses which were being kept empty for temporary accommodation are now being relet. It looks as if the demolition will go ahead. However, the problem of Qualcast and Rolls Royce polluting the atmosphere for the rest of the estate remains unsolved.

held. There was evidence that MCANW regards itself mainly as an educative organisation, the implication being that, having been made aware of the situation it was up to others to change the status quo. As a result, the 'debate' lacked a certain dynamism. However, if only to see who was actually there, and to learn some of the more sinister elements of the governments secret policy statements, this programme is worth checking on.

'The Need to Know' is showing on Thursday 3rd November at 7.25pm on B.B.C.2. Don't miss it!

NUCLEAR DEBATE FILMED IN DERBY

On Wednesday October 5th a BBC film crew descended on Derby. The object was to record a programme for BBC 2's 'Open Space' slot. The Medical Campaign Against Nuclear Weapons (MCANW) had been contacted and asked to illustrate their position.

The audience, gathered by some magical process rooted deep in the B.B.C. psyche, first watched the video which forms part of the broadcast. It focussed on two local G.P.s and a Health Visitor. All made it clear that the main impetus leading them into MCANW was the issuing of a government statement to health personnel outlining

their duties after a nuclear attack. Four speakers led the subsequent debate, continuing the theme of the 'ultimate epidemic', and the inadequacy of the governments plans. There were hints of ancient CND fear tactics and the more complex issues surrounding the subject were hardly mentioned. However, valuable points emphasised the subtle psychological effects of the threat of imminent destruction, especially on the young. Due to the virtual unanimity of the audience, the question and answer session seemed mainly to reinforce opinions already

REPORT

OSMASTON ADVENTURE PLAYGROUND



An Adventure Playground in Nottingham - showing what can be done

Anyone who was a child in Derby after the War will remember the patches of 'waste land' where we used to play. There were old allotments waiting to be built on and old overgrown tips. The best ones had brooks, where you could build stepping stones and dams, hollow caves in the banks and swing across on ropes. Huge clumps of scrubby elderberry could be hollowed out into dens, and there the gang would meet and spend all day hatching mysterious plots and building ramshackle structures with anything we could lay our hands on.

Nobody told us what to do and there were no rules except what we made ourselves. Organised games or trips to the park were rare events. We enjoyed them, but playing on the waste land was a way of life.

Children growing up in the City today have fewer opportunities for this kind of creative, co-operative play. Derelict houses and gardens are tempting but dangerous. Once they have been bulldozed, the land is flat and uninteresting, good for ballgames and running the dog, but not much

else. Parks offer play facilities, but slides and swings are fixed and limited in their use. You can swing and climb and slide, and that's all. You can't take over the environment, and change it to suit your schemes and moods.

The Playgroup explain that the Adventure Playground will be quite different from anything that is provided in the area at present. It will be securely fenced for safety and security. This will also give the children the feeling that this is a place which belongs completely to them. There will need to be indoor accommodation for storage and wet weather activities, and also to provide office space for playleaders.

Osmaston Adventure Playgroup was set up to provide just such a site for the children of the area. There are at least 200 children using the existing play facilities plus unemployed teenagers and adults looking for something useful to do with their time. Building and manning the Playground would bring together all sections of the community. The group are supported by the

local school, and by the police who have been generous with their support. Negotiations are going ahead with the City Council whose help will be vital if the project is to get off the ground.

The presence of trained staff is absolutely essential to the scheme. Their task is not to organise the children but to help them carry out their own plans. There will be few permanent structures on the site. Instead there will be supplies of tools and materials for the children to build their own huts and dens, to dig and lay out areas for games. There will be scope for children who want to play noisy games in big groups, and for those who want to hide away and play quietly.

The Playground will bring many benefits to the area. Bored, unhappy children are most likely to go around causing trouble, and children playing in built up areas are in danger from traffic and a nuisance to other residents.

In a later issue more space will be given to the work of the Playgroup in fund raising and developing the idea of an Adventure Playground for

Osmaston. Meanwhile, if anyone can help with money, transport or by giving their time, they can contact.....

Osmaston A.P.G.
154 Grosvenor St.
Derby.

EAST MIDLANDS SOCIETY CO-OPERATIVE PARTY

DERBY CENTRAL CONSTITUENCY PROGRAMME OF SPEAKERS 1983/4

26 October.

MARGARET BECKET M.P.
'Current Parliamentary
Affairs.'

23 November.

JOHN BEADLE

'The Peak Park Planning
Board.'

25 January.

JOHN ROBERTS
President of East
Midlands Co-op.

22 February.

Councillor JUSTIN

ANDERSON

'Osmaston ward Improve-
ment Scheme.'

ARTS

DERBY JAZZ

Music for the Heart, Mind and Body

A hardcore of six jazz freaks started running the now fortnightly Derby Jazz series at the Albion Suite in East Street, last September. Of the ten dates they've staged, two or three have acquired legendary status.

This season of Derby Jazz gigs promises some more nights to remember. On Wednesday October 26th, the greatest and most influential of all African musicians, Chris McGregor, brings his Brotherhood of Breath from its Southern roots to the heart of Derby. Its basic recipe comprises African tunes, rhythms and textures overlaid with improvising jazz horn players.

Nothing like it has been here before, and Derby Jazz are taking a huge financial risk in staging it. Don't miss it!!

African Music in Derby

And another great African band make their second appearance in Derby later this year. Last November's Jazz Afrika gig was one of Derby's best nights ever. If you missed them then there's another chance to see them when they play the Albion Suite on Wednesday December 7th.

The music of this South African band is jazz based firmly on the flute and drum music of the townships. It moves both the spirit and the body.

Jazz to come

A month before that, on November 9th, the Siger Small Band visit Derby. This band is not as well known as it should be. They have played their Coltrane-based high energy music all over Europe, but have yet to develop a following here.

November 23rd sees two local groups, AJAH, Derby's Afro-Caribbean dance and drum ensemble who are alone worth the £1 admission, and the Andrew Stanton group who are working on some Dollar Brand material at the moment.

The Derby Jazz series finishes on December 9th with the first ever visit to Derby by the brilliant Mike Westbrook. His trio works songs by Kurt Weill as well as Mike's own settings of poems by Rilke, Verlaine and William Blake.

Jazz is music for the heart, mind and body. It is collective and non-prejudiced, and it relies on the complete honesty of individual musicians. If you don't believe, come and prove it for yourself.

Review of 'More than we Can Chew'

The reader is made aware from the first page of this book that it is part of a series of 'popular and provocative books which deal with the economic and political crises in Britain today.' Rather a hefty task for a fairly slim volume of 120 pages perhaps.

tons of grain from the United States? Apparently the Nixon Administration knew nothing about it. This was in order to fulfill obligations to other Eastern Bloc countries. Were you aware that the EEC dairy industry 'churns out 20% more milk than the EEC population can consume' - while the dairy farmers continue to be highly

FUN, FOOD & FIDDLES

In fact, this particular book deals with the food and farming aspect of this issue. It is co-written by two ex-farmers who presumably have some sort of experience in the field. They also happen to be socialists. However, the headlong speed at which the case is presented and the arguments put forward are as far removed from turgid left-wing books on social analysis as the profit-orientated industry is from filling hungry bellies

The book is quite unashamedly littered with clichés: chapter titles such as 'Rural rides again' and 'Around the World in Eighty Ways' rush the reader, fascinated but groaning at the puns, towards the final analysis, 'Seeds of Hope'. Although its style is painful, the book drags the reader along, in spite of all objections. Facts leap out of every page. Did you know that in 1972 Russia bought 8 million

subsidised? There is an analysis of the historical background to our present attitude to the production and marketing of food and a critical analysis of the EEC and Common Agricultural Policy which attempts to unravel the logic behind the system. Food additives and subsequent poisoning is also discussed. The craziness of a system that sees food as profit and not sustenance can be summed up in this comment, "in other words, women, in order to feed hungry mouths, have to labour in pot noodle factories to earn enough money to buy labour saving pot noodles"

'Seeds of hope' offers some solutions, both on the level of personal changes in eating habits, and in action to halt some of the grosser activities of the food industry. A series of aims are outlined and a useful reading list is supplied.

Cont'd on page 13



CITY DATES

ONE WORLD WEEK

PROGRAMME

- SAT 22 10-5 FUN AROUND THE WORLD Eagle Centre
Songs & Dances, Drama & Displays - by Schools and Groups
- SUN 23 12-2 WORSHIP and LUNCH Sikh Temple, Shaftesbury Street
We will meet you at the door. Please bring head cover.
AFRO-CARIBBEAN CULTURAL EVENT Playhouse
2-6 Local Artists - Ajah Dance & Drums, Black Theatre, Poetry, Singing, Comedian/Impressionist.
7pm 'Tooth of Crime' - Black Theatre Co-op
Art & Crafts - Foyer. Peartree Coffee Bar 367848
7.30 FEAST OR FAMINE BY FORTUNE St Mary's School (RC)
Celebrities with compere Phillip Whitehead will play a game to win you a meal. Tickets £2 (Cathedral Shop).
RC Justice & Peace Group - Rosemary Read 47816
- MON 24 7.30 WHAT IS THE U.N. DOING?-Council Chambers
Speakers - Phillip Whitehead and Frank Hookey
UNA - John Taylor, Ambergate 6841
- TUE 25 7.30 MORE THAN WE CAN CHEW? - Friends Meeting House
Speakers from Local Food Co-op. Wholefood tasting. 50p
Friends of the Earth - Pat Lowe 773341
- THUR 27 2-4 TEMPLE, MOSQUE & CHURCH Bus Trip
Visit places of worship. Booking etc - Nita Cook 792433.
- THUR 27 7.30 FOCUS ON AFRICA Metro Cinema, Green Lane
Dispossessed (S. Africa), TAAW (unemployment in W. Africa), Bottle Babies (effects of babyfood promotion). £2.20
- SAT 29 3-9 FAIR SHARES Central URC, Victoria St
'Food & Trade' - 3-all welcome; 5.30-meal; 7-9 under 30s. Richard Bainbridge & Chris Herring (Christian Aid HQ).
Derby C'ttee - Tom Judson, 512142.
Peter Harding 71790.
- 7.0 ONE WORLD WEEK - SERVICE Cathedral
8-12 VIGIL half-hour presentations by different groups

OTHER EVENTS

EXHIBITIONS - Derby Cathedral (15-31 Oct) & Building Societies by local Schools Groups and Communities.
Central Library (till 26 Oct)
'Traidcraft'

ONE WORLD QUIZ for young people - under/over 12.
COMPETITION - Cash prizes. Forms - Library/Schools/Org. Secs.

SPONSORED 24 hours (or more). Water Aid/
FAST - One World Week. Forms, details
- Library/Org. Secs.

World Development Movement - Peter Harding; 71790

ONE WORLD WEEK - Organising Secretaries
for more information:-

Rev Peter E Harding, Elvaston Vicarage 71790
Mrs Nita Cook, 1 Cavendish Court, Shardlow 792433

Club and Group Meetings

POLITICAL/CAMPAIGNING

- AMNESTY INTERNATIONAL For details contact Carol Berwick, 7, Ladycroft Paddock Allestree. Tel: 558998
- ASSOCIATION OF RADICAL MIDWIVES Meet 1st Tuesday of the month at different venues. Nov. 1st meeting at 18, Livingstone Rd 7pm. Tel: Soo on 365830
- BRITISH PENSIONERS AND TRADE UNIONS ACTION ASSOCIATION Meet 1st Wednesday of the month at the Council House 2pm
- DERBY WOMENS GROUP Meet 1st Wednesday of the month at the Womens Centre, Guildhall 8pm
- EAST MIDLANDS CO-OPERATIVE PARTY Meet every Wednesday at the Co-op Head Office, Albion St. 7.30pm
- NATIONAL COUNCIL FOR CARERS AND THEIR ELDERLY DEPENDANTS Meet 4th Wednesday of the month at the Central United Reformed Church, Becketwell Ln. 7pm
- SOCIALIST WORKERS PARTY Meet every Thursday at the Lord Napier, Milton St. 8pm

PEACE/ECOLOGY

- CAMPAIGN FOR NUCLEAR DISARMAMENT Meet 1st Sunday of the month at Derby Labour Club, Charnwood St. 7.30pm
- FRIENDS OF THE EARTH Meet 1st Monday of the month at 65, Otter St. 8pm
- MEDICAL CAMPAIGN AGAINST NUCLEAR WEAPONS Meets 1st Wednesday of the month. For details Tel: Jackie on 365941
- WOMEN FOR PEACE Next meeting Friday 28th Oct. Forum Bookshop 8pm
- WORLD DISARMAMENT CAMPAIGN For details Tel: Eric on 32340
- ECOLOGY PARTY For details Tel: Eric on 32340

SOCIAL

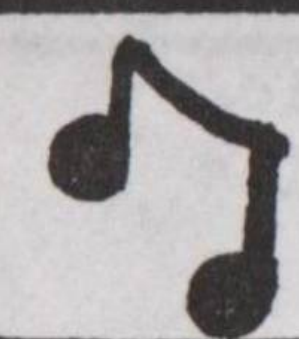
- OUTLOOK SOCIAL CLUB Meet every Tuesday at the Station Inn, Midland Rd. 8.30pm
- FOR 20'S AND 30'S Meet every Friday at the Queens Hall, London Rd.
- GINGERBREAD

LOOSE TALK

Have councillors in and around the deprived area of Allestree no sense of humour? The suggestion that they should have a gypsy camp site in their midst is clearly a leg-pull. Nice one Councillor Walker.

An interesting story once circulated in Oxford concerning Dr David Owen, the SDP's self-proclaimed supremo. When informed that the student Owen was going into politics, his tutor's uncanny reply was, "Really? Which party?"

CITY DATES



music



OCTOBER

Sunday 23rd BBC SYMPHONY ORCHESTRA Assembly Rooms, 7.30pm.
ALMOST FOLK Mumpers Ceilidh Club, Meadows Inn, Derby.
MUSICAL YOUTH Rock City, Nottingham 6.30

Tuesday 25th BROTHERHOOD OF BREATH Derby Jazz, Albion Suite, Albion St. 8pm.
BRUCE FOXTON Rock City, Nottingham
BOB FOX and STU LUCKLY Bow and Arrow Folk Club, Duffield.

Wednesday 26th SINGERS NIGHT Three Horseshoes Folk Club Hemington.

Thursday 27th CLOCK OVA The Blue Note, Sadlergate.
POP BRASS Derby Playhouse 8pm.

Sunday 30th

NOVEMBER

Wednesday 2nd KEIRAN HALPIN Bow and Arrow Folk Club, Duffield.

Thursday 3rd OAKENSHEILD Three Horseshoes Folk Club, Hemington
THE SMITHS The Blue Note, Sadlergate
CATENA TWIST Wilmorton College 8pm. Bar 'till 11.30pm.

Friday 4th TANGENT DANCE BAND Mumpers Ceilidh Club Meadows Inn.

Sunday 6th DANCE SOCIETY The Blue Note, Sadlergate

Monday 7th SIGER SMALL BAND Derby Jazz, Albion Suite 8pm.

Wednesday 9th PHILARMONIA ORCHESTRA Assembly Rooms 7.30pm.

Thursday 10th CYRIL TAWNEY Peasmouldia Folk Club, Olde Avesbury 8pm.
OWD OSS MUMMERS Three Horseshoes Folk Club

Tuesday 15th AZTEC CAMERA Rock City, Nottingham

Sunday 20th CZUPLAK (Ukrainian Dance Band) Mumpers Ceilidh Club, Meadows Inn.

Tuesday 22nd DEATH CULT Rock City, Nottingham

Thursday 24th GRYNODE (16th/17th century music) Peasmouldia Folk Club, Olde Avesbury 8pm

Monday 28th EURYTHMICS Assembly Rooms 7.30pm

DECEMBER

Sunday 4th SHEPHERDS HAY Mumpers Ceilidh Club, Meadows Inn

Wednesday 7th JAZZ AFRICA Derby Jazz, Albion Suite 8pm

Thursday 8th SILLY WIZARD Peasmouldia Folk Club, Olde Avesbury 8pm.

Friday 9th THE MIKE WESTBROOK TRIO Derby Jazz, Wilmorton College 8pm.



OCTOBER

Saturday 22nd and Sunday 23rd ASCENDANCY and THE DECISION The Metro 7.30pm
PASSION Nottingham Film Theatre 5pm and 8pm

Saturday 29th A TOUCH OF ZEN Midland Group, Nottingham 7pm

Tuesday 25th BEACH OF THE WAR GODS Midland Group, New Cinema, Nottingham 8pm

Thursday 27th SUBWAY RIDERS Midland Group, New Cinema 5.30pm and 8pm

Saturday 29th THE DISPOSSESSED, TAAW and BOTTLE BABIES 3 short films for One World Week, The Metro 7.30pm

Thursday 27th THE PLOUGHMANS LUNCH The Metro 8pm

Friday 28th and Saturday 29th THE POSTMAN ALWAYS RINGS TWICE Nottingham Film Theatre 7.30pm

Friday 28th THE SHINING, NIGHT OF THE LIVING DEAD and NOSFERATU THE VAMPIRE Triple bill at The Metro 6pm

NOVEMBER

Wednesday 2nd ROBERT BREER ANIMATION The Metro 7.30pm

Thursday 3rd PIXOTE The Metro 8pm

Friday 4th TAXI ZUM KLU and UN CHANT D'AMOUR The Metro 10.30pm

Saturday 5th OUTSIDE IN The Metro 8pm

Thursday 10th DOLLS EYE The Metro 8pm

Friday 11th TOOTSIE The Metro 7.30pm

Wednesday 16th TOM JONES The Metro 8pm

Thursday 17th and Friday 18th ONE FROM THE HEART The Metro 8pm

Friday 18th THE MAN WHO FELL TO EARTH The Metro 10.30pm

Saturday 19th NOT A LOVE STORY The Metro 8pm

CITY DATES

DERBY WOMEN'S CENTRE

NEXT TO THE GUILDHALL

Tel: 372545

Women's Group Meetings

FIRST WEDNESDAY OF EVERY MONTH at 8pm

PREGNANCY TESTING

10 to 12 NOON EVERY TUESDAY & SATURDAY

FREE TESTS INSTANT RESULTS



Wednesday 16th TAKING STEPS Derby Playhouse 7.30pm
until Saturday 3rd except Friday and Saturday 8pm

December 20th MARY ROSE Derby Playhouse 8pm

Sunday 27th PORGY AND BESS Derby Playhouse 7.30pm

Wednesday 30th SUBMARINERS Derby Playhouse Studio 7.30pm

Friday 2nd until December

Thursday 24th until Saturday 26th PERSONAL BEST The Metro 8pm except Saturday 10.30pm

Sunday 27th FIVE DAYS ONE SUMMER The Metro 7pm



OCTOBER

Saturday 22nd until Saturday November 5th JULIUS CAESAR Derby Playhouse 7.30pm except Fridays and Saturdays 8pm

Saturday 22nd WIND IN THE WILLOWS Derby Playhouse 11am and 2.30pm

Monday 24th ROSE Derby Playhouse Studio 7.30pm except Friday and Saturday 8pm

Saturday 29th GOING AWAY FOR GOOD Leda Theatre Collective, Midland Group, Nottingham 7.30pm

Wednesday 26th and Thursday 27th DEREK GRIFFITHS Derby Playhouse 11am and 2.30pm

Friday 28th FROM ORDINARY LIVES (WORK FOR THREE DANCERS) Midland Group, Nottingham 7.30pm

Saturday 29th DEREK GRIFFITHS Derby Playhouse 11am and 2.30pm

NOVEMBER

Until Saturday 5th JULIUS CAESAR Derby Playhouse (Saturday 5th 4pm and 8pm)

Friday 4th REBECCA Theatre Royal, Nottingham 7.15pm

Tuesday 8th HALF A SIXPENCE Derby Playhouse 7.15pm

until Saturday 12th HEIR TODAY Derby Playhouse Studio 7.30pm

Monday 14th THE MIKADO Assembly Rooms 7.30pm

THE ALTERNATIVE TO "JUNK" FOOD



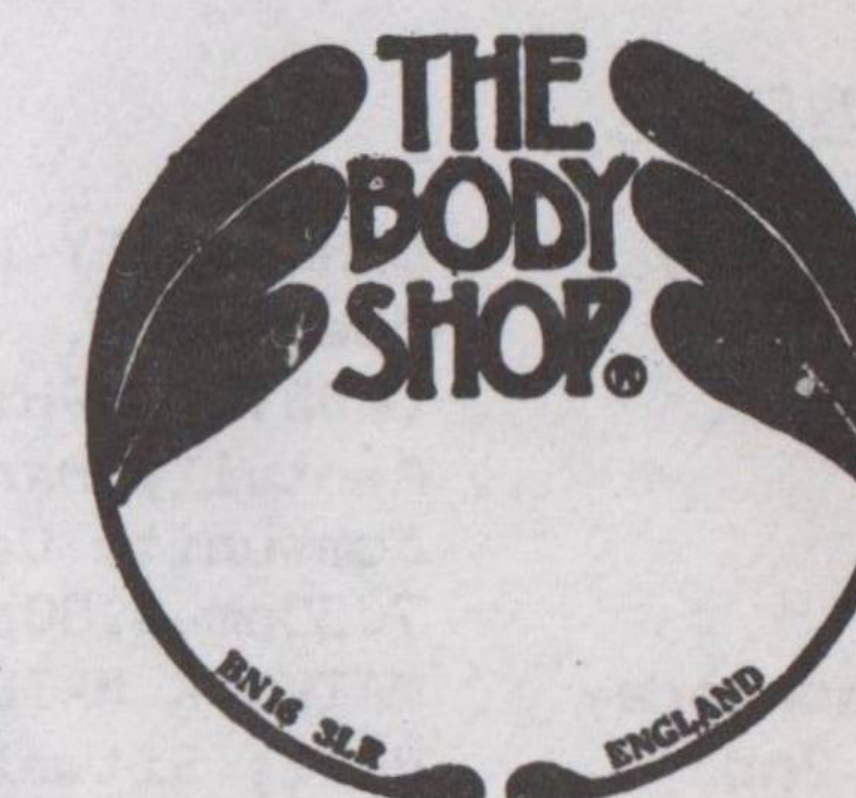
FLOURS - DRIED FRUIT
NUTS - PULSES - SEEDS -
TOFU - T.V.P. - FREE
RANGE EGGS - COFFEE
BEANS - HERBAL TEAS
NATURAL SNACKS -
WHOLEFOOD TAKE -
AWAY AND MUCH
MORE.....
OUR HELP & ADVICE IS
FREE!

NATURAL BODY PREPARATIONS

MAKE UP BY BARBARA HULANICKI

BEAUTIFUL HANDMADE JEWELLERY

COME AND SEE OUR WIDE RANGE OF UNUSUAL CARDS, GIFTS, ETC.....



32 GREEN LANE DERBY tel. 32116

We can meet your printing needs.
We **DESIGN** and **PRINT**
POSTERS.....T-SHIRTS.....

Coming soon....
Design and printing services for:-

**LEAFLETS
PROGRAMMES
LETTERHEADS
NEWSLETTERS
TICKETS
BADGES
Etc. Etc. Etc.**

For further details:
Telephone: Derby 48154
OR call in at:
1 Co-operative Street, Derby.
and see what we have to offer.

DERBY CO-OPERATIVE PRESS

CITY DATES

SPECIAL EVENTS

OCTOBER

- Saturday 22nd** CND NATIONAL DEMO IN London. But by the time you read this it will be too late to go. ONE WORLD WEEK opens. See special programmes.
- Sunday 23rd** DERBY AFRICAN ARTS CULTURAL EVENT, Derby Playhouse. Admission: Adult 75p, Children 50p. 1pm-6.30pm ARTS & CRAFTS EXHIBITION 2.30pm-4pm BOOKS EXHIBITION & DRAMA WORKSHOP 4.30pm-6.30pm CONCERT WITH AJAH (African Dance & Drums), HEADS (Writer and Poet), DERBY BLACK YOUTH THEATRE GROUP, TRADITIONAL AFRO-CARIBBEAN FOLK SONGS (Choir), WEST INDIAN COMIC, CAMPBELL (Writer & Poet) and JIMMY (Afro-Caribbean Folk Singer). In the evening a play TOOTH OF CRIME by the Black Theatre Co-operative. Admission £1.50.
- Monday 24th** UNITED NATIONS DAY PUBLIC MEETING, Council Chamber, Council House, Derby, 7.30pm. Speakers: Phillip Whitehead & Frank Hoolley.
- Thursday 27th** SPECIAL CND MEETING to discuss resolutions for the National Conference Osnabruck Room, Labour Club, Charnwood Street, 7.30pm. THE SACRED SPACE. A space sound and image exploration into features of churches of different religions. The Open Centre, 125 London Road, Derby. Tel. Penny on Derby 360737 for details. DERBY CITY COUNCIL, Planning and Development, Development Control Sub-Committee.
- Friday 28th** HALLOWE'EN EVENT Coton Lane Community Centre, 7.00pm. Fancy Dress and Masks. Children 10p, Adults 25p.
- Saturday 29th** AUTUMN FAIR, Derby Community Transport, Nunfield House, Alvaston, 2.00pm. TUC WOMEN'S DAY OF ACTION, Market Place Derby, from 10.00am. For details Tel. Malcolm Wing on Nottingham 603522. IVS CELLIDH, The Railway Institute, Railway Terrace, Derby, 8.00pm. With Nottingham Swing. Tickets £1.25.
- Monday 31st** DERBY CITY COUNCIL, Leisure Services Committee Meeting.

NOVEMBER

- Tuesday 1st** DERBY CITY COUNCIL, Housing Committee Meeting. DERBY DOLPHIN CLUB (Youth Club for the Mentally Handicapped), Normanton Park Community Centre, Warwick Avenue, Derby 7.30pm-9.00pm.
- Wednesday 2nd** MATLOCK RAILWAY CLUB FILM SHOW, Village Hall, Sitwell Street, Spondon, 7.45pm. MEDICAL CAMPAIGN AGAINST NUCLEAR WEAPONS at 57 Park Grove, Derby, 8.00pm BASKETBALL, Derby City v Davenport Birmingham Bulls, 8.00pm.
- Friday 4th** BONFIRE DISPLAY, Markeaton Park.
- Saturday 5th**

- Sunday 6th** DERBY CND AGM, Metro Cinema, Derby, 7.30pm. Showing two films: 'AMERICA FROM HITLER TO MX' & 'BOOOM'. Free for CND members.
- Monday 7th** DERBY CITY COUNCIL, Transport Committee Meeting.
- Saturday 12th** WOMEN FOR PEACE JUMBLE SALE, Mencap Hall, Wilson Street, Derby.
- Saturday 19th** WOMEN & PORNOGRAPHY WORKSHOP, Metro Cinema, 10.00am - 5.00pm. Women Only. Tel. Madeleine on Derby 45814 for details.
- Saturday 19th and Sunday 20th** CRAFT WEEK-END, Assembly Rooms, Derby. Saturday 11.00am - 8.30pm Sunday 11.00am - 6.00pm.

DECEMBER

- Friday 2nd** BASKETBALL EXHIBITION MATCH, Derby City v Leicester Planters, Moor Lane Sports Centre, 8.00pm.

DERBY CND

WELCOMES THE FIRST EDITION OF "CITY ISSUES"

JOIN DERBY CND TODAY AND ADD YOUR VOICE TO THE GROWING PROTEST AGAINST NUCLEAR WEAPONS.

NAME..... (U-18..50p)
ADDRESS..... Unwaged.£1
..... Waged...£1-50
..... Household.£2)

I enclose _____ subscription,
and _____ donation to Derby CND.

Cut out the panel (when you've read "City Issues") and send to..
DERBY CND
c/o FORUM BOOKSHOP
86 ABBEY STREET
DERBY
tel. 368039



TELL US WHAT'S ON

If you know anything that could be included in CITY DATES then phone us on Derby 48154 before November 28th.

ARTS

METRO MOVIES

Treats in store

A wide variety of cinematic treats are coming to the Metro between now and Christmas. Sandwiched between the 'epic surreal picture of America' which is the 'Blues Brothers', and the enigmatic 'The Man Who Fell To Earth' (a must for Bowie fans) come two Special Events.

On October 27th a series of three films marks One World Week. The pernicious evils of the Baby Milk Scandal, the problems of being unemployed and unable to bribe in Senegal and the rather less than pleasant activities of the South African government in pursuit of their 'homelands' policy form the theme of the films.

In conjunction with the other activities of One World Week these films present an analysis of some of the 'obstacles to change' encountered by the African peoples. The second special event takes place on Womens Day the 19th November. 'Women and Pornography' is a series of discussions centering around the film 'Not a Love Story' and a presentation entitled 'Pictures of Women'.

Pornography and Horror

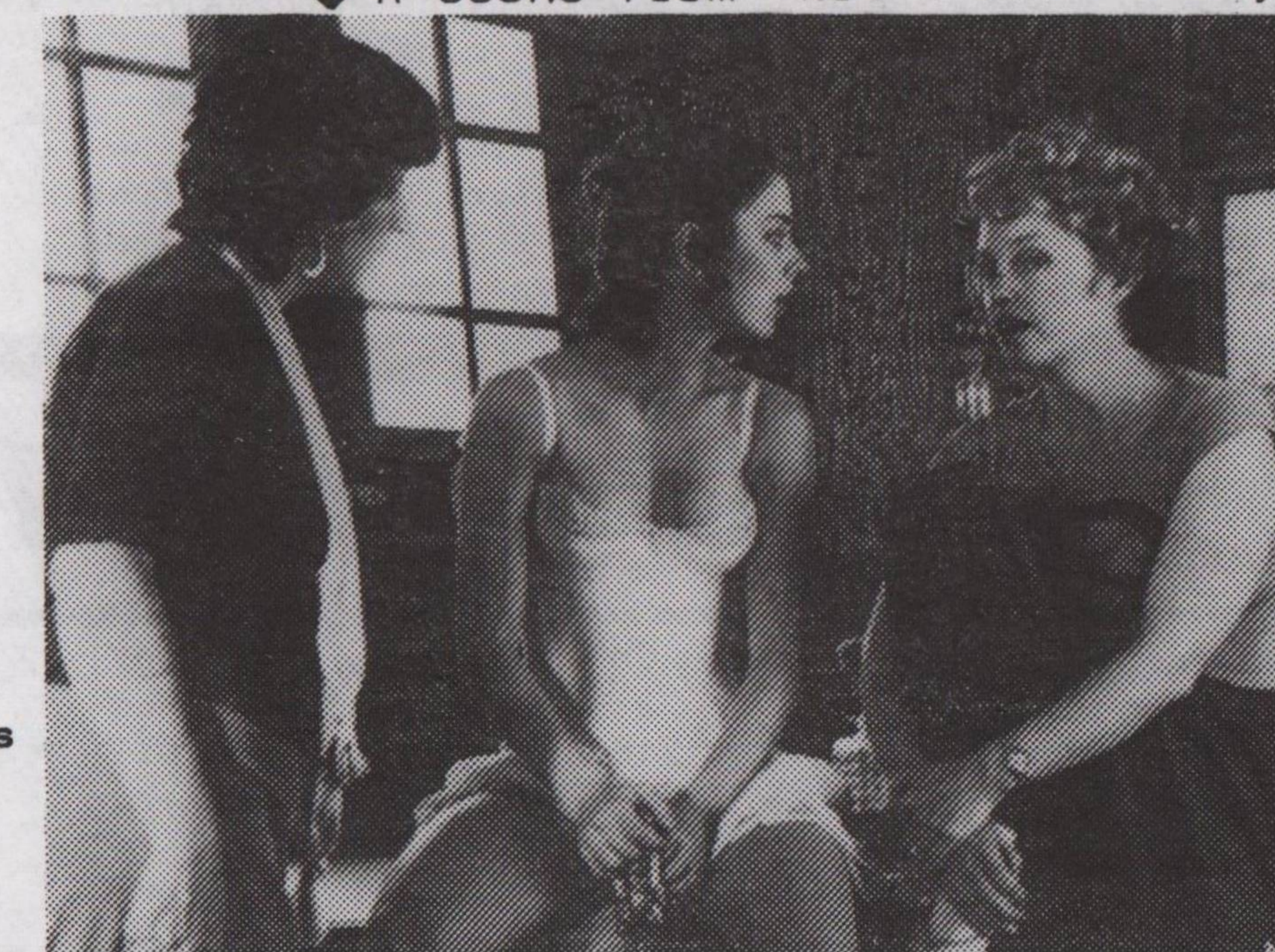
Women will be looking at how pornography works to create a specific image of the female, and at where the boundary is between acceptable eroticism and oppressive exploitation. Although this day is women only (from 10am-5pm), 'Not a Love Story' will also be screened to the general public at 8pm on the same day.

Not content with educating us on political issues, the Metro intends to entertain us, and to render instruction in the cinematic medium. The Halloween triple bill on October 30th features three films



Dustin Hoffman in 'Tootsie' ↑

↓ A scene from 'Not a Love Story'



guaranteed to ensure a rather cautious walk home- 'The Shining', 'Night of the Living Dead' and 'Nosferatu the Vampire' vie for your nerves.

If you survive until Wednesday 2nd November, delve into the somewhat esoteric delights of 'Robert Breer, Animator'. In conjunction with his work, evidencing 'love of velocity and comic collapse', there are works from other animators including Messmer with his cultish 'Felix the Cat', 'Taxi zum Klo', a 'comic autobiography of ill-matched lovers is, perhaps counterpoised by a more overtly serious analysis of homosexuality in 'Personal Best'. The sub-plot of the latter film involves the mutual

attraction of two female athletes. However, the film also analyses the pressures, both physical and psychological, of preparing for a career of athletics and competition.

There are other films scattered amid those I have picked out, including the popular 'Tootsie'. Sadly, the season ends with one I consider to be less than good. When I saw 'Five Days Last Summer' (on a video I confess) I thought it had been made somewhere in the basement of Hollywood in the Sixties. Suspicions of Walt Disney production crossed my mind. I must admit, the content: niece on a climbing holiday with uncle/lover: soon dispelled that idea. In fact, it is an '82 creation, by Zinnemann.

Admittedly, he was attempting a recreation of the 1930's 'berg film'. Perhaps it is a good recreation. Personally, I was unimpressed. I hasten to add that this is unusual for me. Generally, the films at the Metro well merit the loss of a quid or two. If you want to find out for yourself, take a look at the 'Whats On' section, and visit the cinema one of these dark evenings. One thing for sure. You won't see me there on Hallowe'en. (Metro: Green Lane, Derby. Tel: 40170. Prices £2.20-£1.20 depending on status/membership)

ARTS EDITORIAL

We are interested in your views for this paper. Have you seen a play, concert or film recently that you would like to tell anyone about? Or is anything coming to Derby that you think would interest other readers? If you've read a good book or written a poem, know of a group coming to you community centre or organisation, or have been travelling in an obscure and interesting area, write to City Issues. Let us know how Derbyites spend their ever increasing leisure time.

Food Fun & Fiddles cont'd from page 8

Anyone who can get through this book without both suffering the puns and wondering where on earth they found them all should at least have gained this remarkable insight - that it matters that we are conscious of what we eat and how it gets to us. For the health of ourselves and our children, as well as the 70% of the world who have no choice, we must make a decision to be aware of the issues. This book both outlines the problem and inspires the reader to act on that awareness.

'More Than We Can Chew' Arguments for Socialism - Charlie Clutterbook & Tim Lang £2.50

ONE WORLD WEEK

One World Week will open with music, displays, dancing and balloons filling the Eagle Centre, Derby. The organisers of One World Week hope that this opening event will set the tone for the weeks activities which aim to show that a variety of background, race, culture and language need not be a barrier but can be an opportunity to understand each other better and appreciate each others talents. In a simple visual way the week will demonstrate some of the reasons for the divisions in the world and perhaps offer some solutions.

During Saturday various age groups drawn from all sections of the community will be taking part in music, dance and mime originating from places as far apart as Ireland and the West Indies, Mexico and India. Most items will run for about ten minutes so



spectators will be able to stop for only a short while or see a wide variety of entertainment in half an hour. Young people will be able to take a quiz away to give them extra food for thought and perhaps win a cash prize. This

quiz will also be available in schools in the week before half-term. Come and join us. See what an interesting place Derby is and what a variety of interesting and talented young people live in our City.

SOUND AND VISION

To focus its concern on International issues, Radio 4 is adopting "Breaking Barriers" as its theme during One World Week.

On Sunday, the food programme takes a look at international food, whilst Monday's "Start the Week" at 9.05 am and "Tuesday Call" at the same time, focus on "Breaking Barriers". "Woman's Hour" will feature reports from Thailand and Papua New Guinea whilst "Thought for the Day" and the Morning Service relate to "One World Week". Highlight of the week will be a broadcast from the London's Royal Commonwealth Society.

On Channel 4, on Tuesdays at 6.30pm commencing on 18th October, there will be a series of 10 half-hour programmes which will be called "Utopia Ltd". The way the world works will be investigated under 4 main headings, food, energy, health and arms, and will discuss questions like, if there is enough food in the World for us all, why does hunger persist?

Since we can achieve astonishing medical feats like transplants, so why do we let diseases like malaria kill off millions of people? Why is the world economy so efficient at selling weapons of destruction? Are energy resources being

used up too quickly to allow for a more equal distribution?

The locations for the programme are Latin America, the Far East, South Asia, Africa and Europe. Each programme stands on its own but the series builds up a revealing picture of a world system at work. A study guide, price £2.95 is available from I.B.T., 2 Ferdinand Place, London NW1E 8EE. It is hoped to hold 3 discussion groups at Alvaston Vicarage, Church Street, Alvaston in November. Further details ring Derby 792433 or Derby 71790.

FOOD FOR THOUGHT

What relevance to world food crises do that cup of coffee you're drinking and that banana you ate at lunch have. None, you may well think. Muse on this, though - coffee is second only to petrol as the most important commodity in the Western World. In Trinidad, where bananas grow, they cost £1 per pound.

Food in the west is no longer a basic essential of life, but a commodity. Its value no longer depends on how hungry we are, how much work we put into producing it, and what our country can produce, but, crudely, on whether the few companies holding monopolies in its production under- or over-produced last year.

STOCKPILES

Everyone knows about EEC butter mountains and wine lakes - but the stockpiling and destruction of food isn't peculiar to Europe. In the early 1930's the Brazilian government was already burning or dumping over 100 million tons of coffee beans to maintain high prices. Wheat, sugar and cocoa - all these crops have been stored or destroyed to keep prices high.

But there are other very lucrative ways of using excess food. It can be processed - the more stages it goes through, the more profit it generates. Turned into a non food commodity it can be presented as a solution to other crises. The recent suggestion by Euro M.P.s of turning excess French wine into petrol is an example. Excess vegetable protein can be transformed into

more lucrative meat. This represents a vast waste of resources. It takes 2lbs of protein as animal feed to produce 1lb of beef.

EXCESS

Excess supplies can be preserved for a slack time, or even a different market. The less attractive option of redistribution to the world's poor is ignored until it becomes financially viable.

To bring this closer to home, it is instructive to look at the activities of Nestles in the overseas food market. In order to expand its bottle-milk outlets, Nestles decided to market the product overseas in the so-called developing countries. This led to disastrous results.

Intensive advertising and the attraction of the Western way of doing things led to more and more mothers buying the tins of dried milk. It was also pushed by the Nestles fieldworkers through health centres and so had the back up of 'medical' recommendation.

The instructions on the samples often weren't in the relevant local language. Feeds were therefore often made up wrongly: either over concentrated, leading to dehydration of infants, or too weak, leading to malnutrition. The women weren't taught to sterilise the bottles, even if the water and heat source to do it were available. Gastro-enteritis outbreaks were therefore inevitable. The milk was expensive and depleted the families' resources.

Lastly, the most widely used form of contraception, lactation, was disrupted. The result: more children, more sickness, more hungry mouths.

The situation is somewhat remedied in this area now through strong international protest. However, in many areas such aggressive marketing of basic or even unnecessary food-stuffs continues.

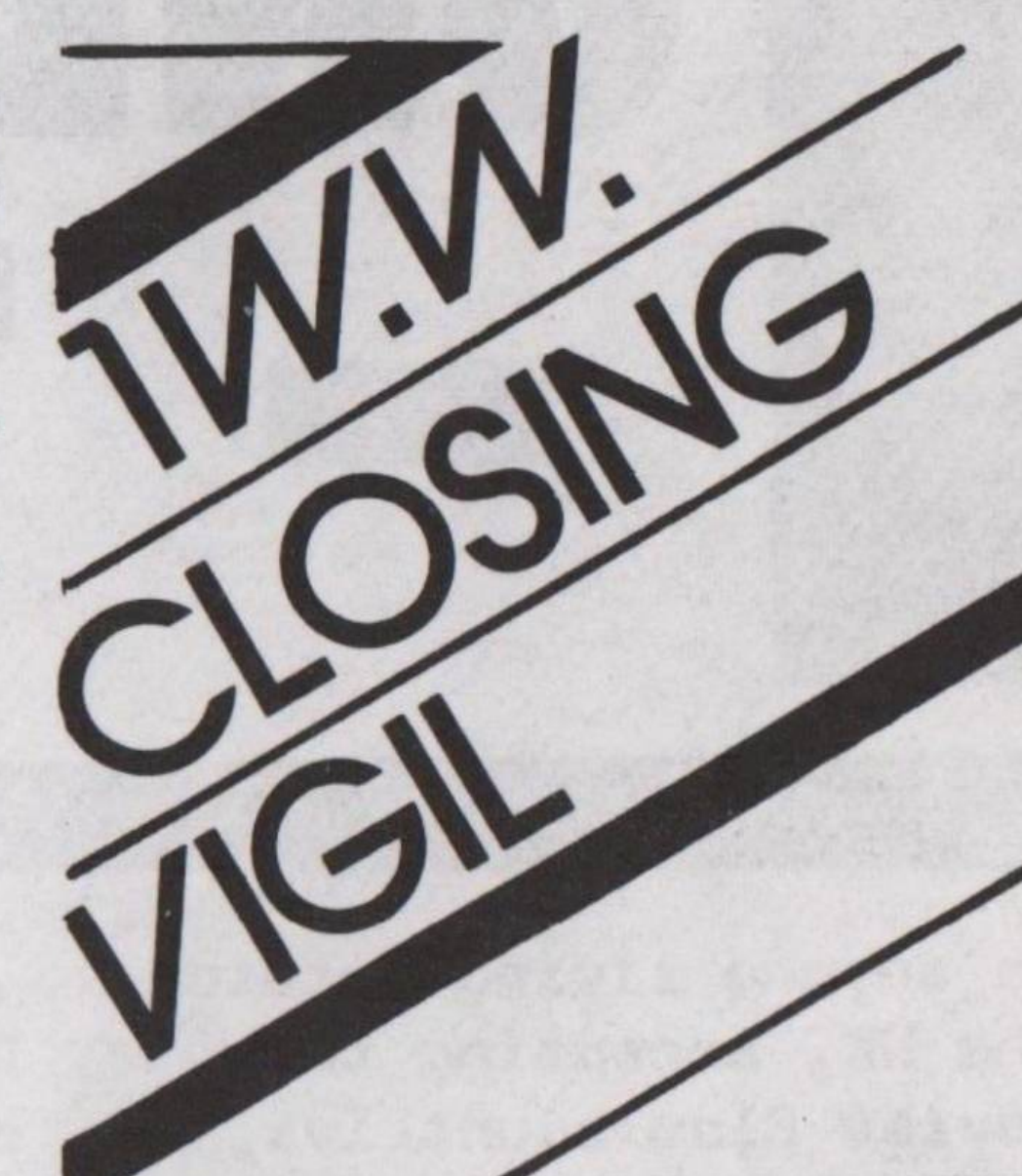
Meanwhile, back in Britain we eat well: perhaps too well. Or do we? When we actually buy food, what else are we buying? Next time you dive for that tempting looking packet, read the list of ingredients before you pass over your pennies. There are an estimated 23 million working days lost in the UK each year due to food poisoning. Food for thought?

Come along to a meeting entitled 'More than we can chew' (See City Dates for details) to air your views on the subject. We are, after all, what we eat. So shouldn't we be well informed about our food?

FEAST OR FAMINE BY FORTUNE

Derby Catholic Justice & Peace Group are contributing to One World Week by holding a Feast or Famine by Fortune Evening in St Mary's School, Edward Street on Sunday 23rd October at 7.30 pm. A group of celebrities including Dennis McCarthy from Radio Derby, the Right Reverend Cyril Bowles, Bishop of Derby and Flo Tunnicliffe, former mayor, will play a game of chance called the Grain Drain which reflects world trading patterns. Each celebrity will lead a team of guests and, depending on their success in the game, the teams will receive a richer or poorer meal, a feast or a famine.

Proceeds from the evening will be given to a self-help project for young people on the Island of Mindanao in the Philippines.



One World Week draws to a conclusion with a service and vigil in Derby Cathedral on October 29th. The service begins at 7p.m. with music from St. Thomas More school-children. The Reverend Mark Wilson, Diocesan Advisor on Social Responsibility will give a talk exploring the week's theme, 'Breaking Barriers'.

One feature of the theme which has already caused controversy in the press demonstrates the conviction that belief should lead to action for justice in our world and the challenging of the status quo.

From 8 - 12p.m. various groups will be stimulating thoughts for prayer, reflection and action using drama and other media. Issues covered will include breaking the barriers for women, race, peace, trade, health and freedom.

The organisers hope that the service will draw together the thoughts of the week and leave participants with ideas of how they can participate in breaking barriers in the world.



REPORT

UNEMPLOYMENT - THE REALITY

To anyone living outside the UK, excepting the Soviet Bloc countries, Margaret Thatcher appears to be some kind of heroine. Her image abroad is one of strength, determination, an unconquerable spirit and steadfastness in the face of aggression. All admirable qualities of course but slightly baffling to those back at home who happen to be unemployed, ill, poor, or elderly. While the Iron Lady gains rapturous attention abroad, the plight of these people remains hidden from sight.

It has long been a ploy in politics of course to bolster your ratings at home by some foreign adventure. In this way attention is diverted from the real issues at home. The Argentinians, of course, invaded the Falkland Islands for precisely that reason. Now Thatcher has gone even further. Her 'cold war' speeches have enraptured American audiences.

'Raygun' Reagan, the Cowboy President, even compares Thatcher to Britannia, Churchill, Superwoman, and God knows who else. Just

what, if anything, will Mrs T's 'personality cult' contribute to the fight against unemployment and its attendant social problems.

BLOODY NOSES

Derby of course, rates rather low when compared to the likes of Washington, Bonn or London. It would be quite easy to forget the 'missing millions' when one is fraternising with the likes of President Reagan and Chancellor Kohl. How can one be concerned with such trivial matters as a few more thousand registering unemployed in Derby, or for that matter the deep psychological and material consequences of long term unemployment. (And less we forget more than 58% of the unemployed have been out of work for more than six months.)

The 'Iron Lady' is really more concerned with bloodying Argentinian noses and 'freezing' out Mr Andropov. Similarly the government seems less intent on building houses or

replacing our antiquated sewerage system, and more intent on building human slag heaps.

Of course Margaret Thatcher and the Tory government believe in 'facing reality' at home and abroad. Just what they mean by reality is quite clear. However for the people of Derby reality is seen rather differently. The real facts are that Derby can now for the first time, be officially termed an unemployment blackspot. According to a recently published report Derby now has an unemployment rate above the national average, 13.6% compared to 12% nationally. In the inner city areas, the figures are even higher - around 25%, whereas in the suburbs they are below 10%.

GLOOMY FUTURE

Redundancies have reached almost 5000 so far in 1983. Skilled vacancies, so abundant before, are now 30% down from this time last year. Vacancies have in fact shown a downward trend in the county 10% down, June

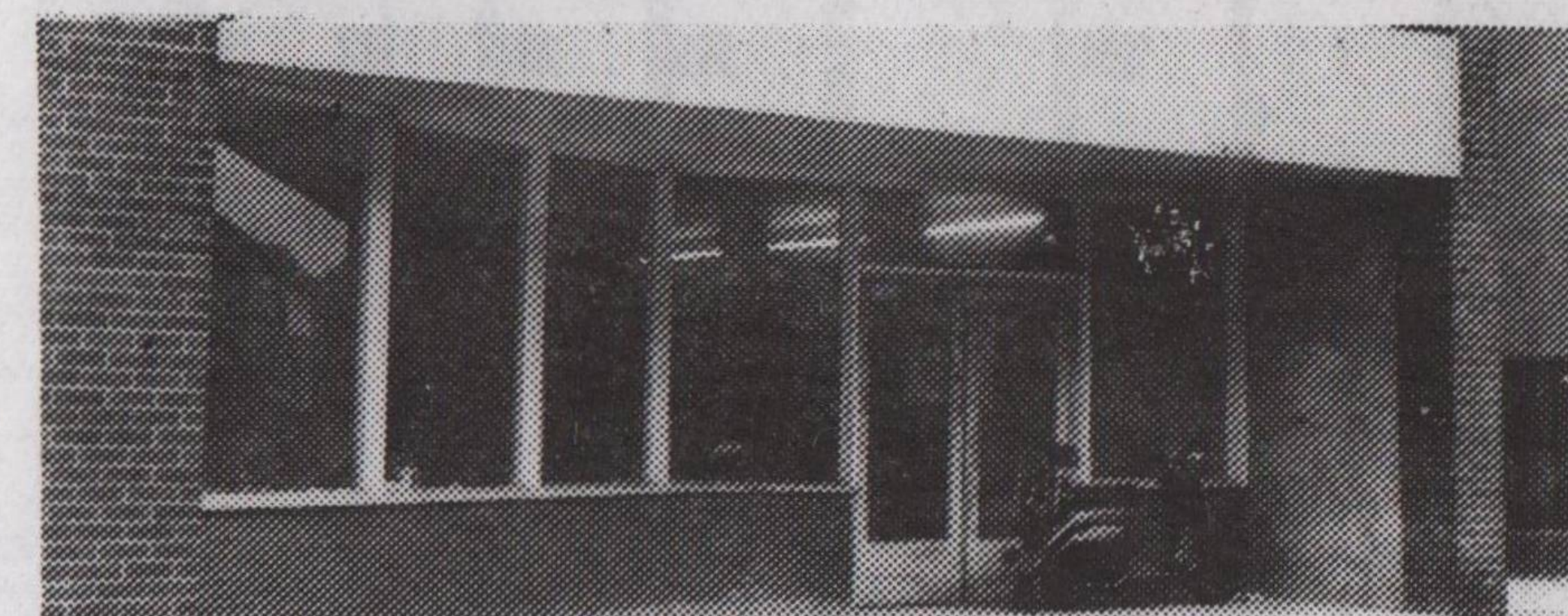
'82 to '83, compared to the national trend of a rise of 7%. There is no doubt that Derby faces an insecure future where unemployment is concerned. The alarm bells should be ringing loud and clear. A city that once boasted an abundance of skilled vacancies now seems in danger of a sad decline.

If the present is gloomy, the future is even worse. A University of Warwick report indicates that further losses can be expected in manufacturing especially in metals, mechanical engineering and textiles. All highly vulnerable industries in the '80s. Yet large numbers of Derby people depend on these industries for their livelihood. Can the people of Derby rest assured that this government is actively pursuing policies that will ensure a future for Derby people. I doubt it, although the government makes optimistic sounds about an 'upturn' or 'pulling through'. They remain empty phrases. The reality is rather different. Even with a so-called 'up turn', the indications are that capital will go into equipment rather than jobs.



NEWS

CENTRE FOR UNEMPLOYED STAYS SHUT



Progress in establishing an Unemployed Workers Centre in Derby has been temporarily halted by a disagreement between the Trades Union Council and the Manpower Services Commission. The dispute has stopped the appointment of staff for the centre who were to have been employed under the MSC's Community Programme.

Programme people cannot be employed for political purposes. The TUC takes this to mean party political but the MSC has a much wider interpretation. For instance, a poster at the centre advertising a 'Right to Work' march could be regarded as political and would not be allowed under MSC rules. In the meantime, centres like the one in Derby are remaining closed for the want of Community Programme staff.

Work to create a centre was begun about two years ago by the Derby Trades Council. The East Midlands Co-operative Society made premises available in Woods Lane, and finance for the alterations was provided by the City and County Councils. The conversion has recently been completed and so the centre is awaiting staff in order to open and get down to business.

The hold-up at national level is the result of an argument between the TUC and MSC about the meaning of the term 'political'. Under the MSC's Community

The Trades Council has recently handed over control of the centre to a Management Committee representing the community, local authority and Trade Unions. Money is still required to equip and run the centre.

Donations can be sent to: The Secretary, Derby Unemployed Workers Centre, c/o TGWU, 32 Charnwood Street, Derby.

In fact this government really believes that there is no alternative. They remain hooked to an intellectual philosophy that requires the opening out of our economy both at national and local level to the realities of world market forces. No matter that the competition competes on an unfair basis, the government sticks to its policy whatever the cost.

DELIBERATE POLICY

The cost in jobs and bankruptcies is enormous. (In 1982, insolvencies alone were running at close to a thousand a month.) And surely the real unemployment figure is close on 4 million. We all know that the budget

fiddled the figures.

The reality is that this government set out from the beginning to push upwards the rate of unemployment. Their aim was to weaken the trade unions collective bargaining strength through the fear of unemployment. And we must remember two things about trade unions. First, trade unions are the defenders of ordinary peoples' living standards, secondly, there can be no democracy without a free and strong trade union movement.

The question is, can we safely leave the future of Derby and its inhabitants in their hands? Remember no one, no one from the managing director to the office cleaner is safe from the threat of redundancy.

CLASSIFIED ADS

ACCOMMODATION OFFERED

We are seeking kindred spirits to join a friendly and 'ecological' home in

Allestree. Rent is £55 monthly. Please 'phone Derek & Rose in evenings on Derby 551924.

DERBY COMMUNITY TRANSPORT

COMMUNITY GROUP HIRE

- * Is available to any group which becomes a member of Derby Community Transport for the £10 affiliation fee.
- * Can be used for either long distance or local journeys.
- * Costs 35p a mile for up to 5 hours or 20p a mile for over 5 hours plus £1 per hour.

Community Groups can either supply their own driver or if they find they are unable to do this then we endeavour to provide one from our pooled registered volunteer drivers.

The service is for the people of Derby so don't be afraid to call us if you wish to use our bus or if you have any questions.

DIAL • 380738 •

Worker Co-operatives and you?

Use your Skills to create employment, together with other people

Please contact: Gilly Merron

Derbyshire Co-operative Development Agency Ltd
3 The Strand Arcade, Derby, DE1 1BQ.
Tel: 380515

REPORT

HOUSING BENEFIT SCHEME CAUSES CHAOS

Have you had problems claiming housing benefit? If so, you aren't alone. Ten months after the first phase of the scheme was introduced, some claimants are still waiting for that cheque to regularly drop through the letterbox. City Issues talked to the Derby City Housing Department who accepted that the scheme had caused problems for both staff and claimants.

STAFFING

A 500% increase in workload with only 26 extra staff, many on temporary appointments, led to Housing Officials working shifts between 8am and 8pm in order to allow time for paperwork outside public opening hours. Council officials say that housing benefit 'took over' the department leading to a neglect of other areas of work.

National Association of Local Government Officers representative, George Rennie, said that his union had been initially opposed to the scheme, as

they considered it to be part of the Government's Civil Service 'pruning' exercise. The scheme led to a loss of 2,300 Civil Service jobs nationally, (in DHSS offices) and an increase in local authority jobs of 1,600 (in housing departments).

EVICCTIONS

Problems for claimants have been overwhelming. One hears daily stories of delays, incorrect assessments and ignorance of how benefit is assessed. Hardly surprising when publicity has been negligible and claim forms jargonised and complicated. On a more hopeful note, Derby Housing Department intend to produce a leaflet which they say will explain in a clear and simple fashion who is entitled to housing benefit and how it is assessed. They hope the leaflet will be ready in November.

Some of the most acute difficulties have been experienced by private tenants where landlords have evicted or refused

to let accommodation to housing benefit claimants because of the delay in receiving cheques. Walbrook and Derwent Housing Associations say that arrears increased dramatically after April when their phase of the scheme came into force, and the Housing Association Journal, Voluntary Housing, recently reported a massive £10 million increase in arrears nationally.

The Housing Benefit regulations state that ideally it should take a maximum of 14 days between claiming and receiving benefit - in Derby it has been nearer 6 to 8 weeks.

BETTER OFF

Perhaps some of these 'teething troubles' could be forgotten if claimants could be assured that the new scheme had made them 'better off'. After all, the Government line has been that the new scheme would unify all existing housing benefits thereby removing anomalies such as the haphazard system whereby a claimant might be better off on rent rebate, or on a DHSS rent allowance. Everyone, the story went, would be on the scheme that would make them 'better off'. But the scheme was to be introduced at 'no extra cost'. Mathematics suggest, therefore, that if some are better off, others must be worse off.

WORSE OFF

A recent SHAC pamphlet claimed that 2,000,000 households stood to lose from the scheme which involved a transfer of money from the poor to the very poor. This was supported by Housing Officials interviewed who cited possible 'worse off' cases as pensioners with incomes just above the official poverty line and the sick and unemployed on flat-rate benefits who would no longer be eligible for supplementary benefit and its attendant benefits such as grants for furniture and fares to hospital.

RIGHT TO ARREARS

Council tenants can no longer accrue arrears except in a few exceptional cases. This may be welcomed by Housing Departments keen to avoid central government wrath at overspending - but for claimants it represents the removal of the freedom to 'juggle' financial demands, eg: to leave the rent for a fortnight in order to pay a fuel bill.

Both the City Personnel Department and NALGO are reviewing the operation of the system in respect of staffing in the hope that many of the temporary appointments will be made permanent.

A better staffing system may well improve the operation of the scheme but the basic underlying problem remains - that the scheme was conceived by a Government uncommitted to supporting the Welfare State.

Some useful tips if you are claiming housing benefit:

- Writing or calling into the office is likely to be more successful than telephoning,
- If you think your benefit has been incorrectly assessed and you have approached the Housing Department without success, you have the right of appeal to a special committee,
- You can ask to receive housing benefit weekly if it will help you,
- Benefit can be paid direct to landlords

KDH cycles
Derby's newest Cycle Centre

Best Bargains in Town!
Special Offers Always!

- * After Sales Service
- * Repairs, Spares
- * Frames & Wheels Built to Order
- * Best Quality Bikes, Low, Low Prices

Shop: 4 Lowerdale Road Normanton Derby
Telephone (0332) 363929

NEWS

MISSING

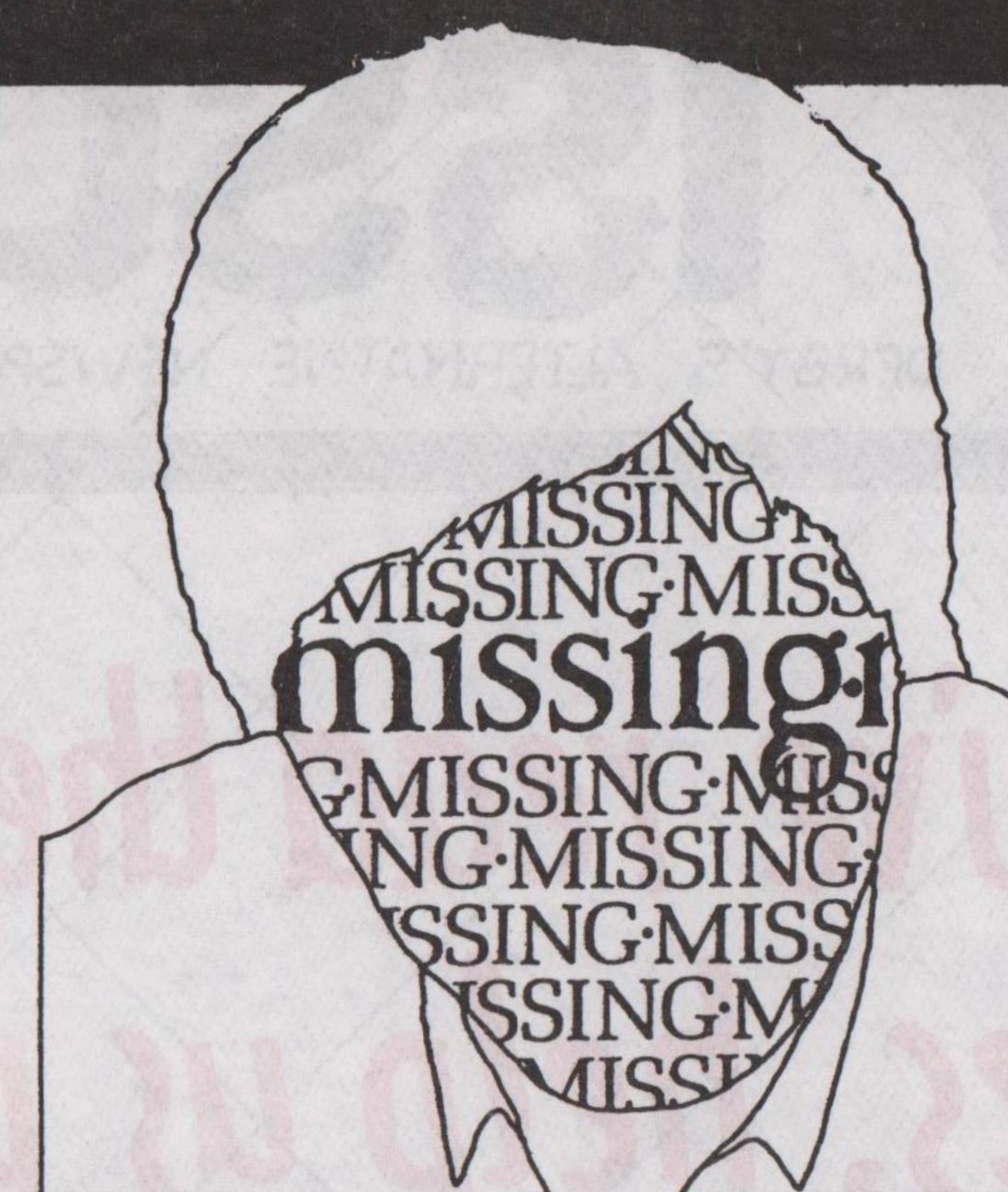
Prisoner of Conscience Week ends on 23rd October and was designed to draw attention to political killings and disappearances throughout the world. In conjunction with this the Derby Amnesty Group showed the film 'Missing' at the Metro Cinema, which told the story of a young American who 'disappeared' in Chile at the time of the violent overthrow of the Allende government in 1973 and examined the complicity of the USA in that overthrow.

Amnesty International, the largest human rights organisation in the world, which is probably best known for its work to bring about the release of non-violent prisoners of conscience. Increasingly, however, in the face of the enormity and scale of human rights abuses, Amnesty has had to channel some of its efforts into 'theme' campaigns.

KILLINGS

In recent years groups have been active in trying to raise public awareness about such problems as Extra Judicial killings (Murder by

Government) and 'Disappearances'. In many countries government forces carry out deliberate and illegal killings - well-known political figures have been publically assassinated or whole villages have been wiped out. This picture is familiar to those who follow the news from Guatemala and El Salvador, but in other countries, ranging from India to the Philippines and Iran, killings take place outside the law. There is usually no investigation of events and no attempt to bring



those responsible to trial.

VICTIMS

'Disappearances' are another facet of repression. Opponents or suspected opponents, of a regime are arrested by police or security forces, often the arrest has been seen by witnesses but those detained simply 'disappear'. Sometimes the victims have been seen briefly in torture centres by comrades who have later been released, but usually they vanish completely. The relatives of the 'disappeared' do not know whether their

loved ones are alive or dead.

TORTURE

Amnesty is still trying to discover the whereabouts of almost 3,000 people who disappeared in Guinea Conakry between 1969 and 1976. Many of them are believed to have died as a result of secret mass executions, torture and appalling prison conditions or the 'black diet' - total deprivation of food and water until death. The Derby Amnesty Group has been attempting to find out the whereabouts of five members of the All Ethiopian Socialist Movement, who vanished whilst in custody in Addis Ababa in 1976 and of the 15,000 plus people who have disappeared in Argentina. The group were active in a campaign involving letter writing, demonstration in London, visits to the Cameroon Embassy which resulted in a prisoner of conscience from Cameroon being released last year.

For further information on the group phone: Carol on Derby 558998

CUT-ABILITY - THAT'S THE BEAUTY OF GAS

assistance can prevent disconnection. They may actually pay the debt for you if no other means - usually direct payment or the installation of a slot meter - can be found. However, this is rare. More likely, Social Security will deduct an amount from the fortnightly giro and pay it direct to the Gas Board. Be warned - this direct payment may be as much as 40% of your benefit. This option is usually only available to people who are receiving supplementary benefit,

not flatrate pensions or unemployment benefit, or who are in employment. What happens to people who are eligible for DHSS help but are not aware of it? Although the Gas Board told City Issues that they always contact the DHSS to find out the circumstances of the household in question, Social Services deal with many cases of people facing disconnection who don't know that help may be available. And what happens to people employed on low wages, or on Manpower Services

Commission Schemes that pay little more than the dole and who receive no benefit? In these instances, unless you produce the total amount owed or a substantial part it is very hard to prevent disconnection. The cost of disconnection can be high - not just in terms of a freezing house through the winter. Once your gas supply is cut off you not only have to find the money you owe, but also a reconnection fee of £22.50 and a security deposit which is calculated according to the yearly usage. In one case, that of a couple with two children who owed £220, the outstanding debt, the reconnection fee and a deposit of £180 had to be found - a total of £422.50 before the supply could be reconnected.