

Sneinton Voice

士靈頓之聲

GLOS ZE SNEINTONU

॥ सनटन का आवाज ॥

LA VOCE DI SNEINTON

آواز سنیٹن



No 8

Distributed free to 3500 households.



SNEINTON'S CONSERVATION AREA

Nottingham City Council have published this month a draft policy for further improvements in Sneinton following the Old Sneinton Conservation Area Plan of 1975. Copies of this draft can be obtained from the City Planning Department in the Guildhall at the price of 75 p, or at the Sneinton Voice office, 26 Lyndhurst Road. The Conservation area is bounded by St Stephens Church and the old houses on Windmill Lane on the city side, the beginning of Sneinton Dale (including the Mill area) and Sneinton Hollows with Castle Street forming the distant boundary. The new plan proposes to include Lord St, Robert St, Holroyd Ave, Victoria Ave and the Hermitage Square area in the draft conservation plan. - continued on page 6



Letters

Dear Ed,

Would you please put the insertion in your paper about the "Lyndhurst" Senior Citizens Club again, and a little tribute to our oldest member Mrs. Cope who was 90 years old on Dec. 9th 1981. We were giving her a party, complete with birthday cake, but it had to be abandoned because of the weather.

Well, we had the party on January 21st, (in her absence), and we would like to wish her "many happy returns", and hope she will soon be with us again.

The next meeting Feb. 4th, we are having a film show by one of our members.

Thank you.

from The Lyndhurst Ladies.

Meet fortnightly (Thursday's only)
at the Community Centre, from
7.30pm. to 9pm. Ladies only (over
60's).

ACTIVITIES: Speakers, demonstrations,
film shows, outings to interesting
places, bingo, bring and buy sales
for our own charities, drama groups,
etc. Come and join us and meet a lot
of interesting people.

CUT COST MOTORIST CENTRES

**BIG DISCOUNTS ON ALL
COMPONENTS AND ACCESSORIES!**

Oil Filters and Air Filters up to 70% off
COMA Oil, 1 Gallon £ 2.48
Motorcraft Spark Plugs AG22's £ 1.74
VALVOLINE Oil, 5 litres £ 3.48
LUCAS Alternators from £ 18.50 exchange
Starter Motors and Dynamos from £ 8.50 exch.
Fuel Pumps in Stock
Mark III & IV CORTINA Camshaft Kits £ 35.00
FORD Mark III & IV CORTINA and
Mark II ESCORT discpads set of 4 £ 3.92
Brake Shoes set of 4 from £ 3.95

ALL PRICES SUBJECT TO 15% V.A.T.

**ANTIFREEZE IN STOCK / COMPONENTS AND
ACCESSORIES AT BIG DISCOUNTS**

Clutches, Waterpumps, Steering Wheel Cylinders etc.
Mark 3 & Mark 4 CORTINA Discs each £ 8.00

CALL IN NOW TO :

79 Colwick Rd. Nottingham, Tel. 582127
135 Portland Rd. Hucknall, Tel. 637575

**OPEN
6 DAYS**

'EARD IN OWE SNEINTON

Sam: Ayup Cyril. Ayer gorraminnit? Ar George vus gointer gimmi a and wi shiften these slabs, burrees bin took bad wi is back.

Cyril: Ah, alright. Burra can't stay. Ar Nell wants mi ter goo up tahn wiyer. Ayer gorrabarrer ter shift em wi?

Sam: Ah. Ahm gooin ter borra a barrer from oud Robbo up the entry. E's towd is Missis ter lerrus avitt if e's aht. Ayerreddi?

Cyril: Ah. Lets gets gooin! Ah reckon your kid's mardy wi that back of is, it don't ot im wen he's liftin pints!

HAIRDRESSING FOR MEN

BRIAN W. BUSH, 115 Colwick Rd.

OLD SPICE, BLUE STRATOS, BRUT 33,
AFTER SHAVES, TALCS, DEODORANTS,
HAIR SPRAYS, SHAVING SUNDRIES, SHAMPOOS + CONDITIONERS



ALL TYPES BUILDING

Good Quality Work

REPAIRS

Phone G. BEETON 583516

Don Pietro

THE
ITALIAN RESTAURANT

WELCOMES YOU
TO TRY THEIR
SPECIAL ITALIAN DISHES!



BARKER GATE
NOTTINGHAM
(near Ice Stadium)
TEL. 57876

Ample Parking nearby!

**RESERVATIONS TAKEN WITH PLEASURE
SPECIAL PRICES FOR PARTY
BOOKINGS!**

STONEBRIDGE CITY FARM

The farm is a Youth and Community Project based on a 3-acre site on Stonebridge Road, St Anns (back of new Co-op on Carlton Road).

Work first started in the winter of 1978, after a three year lease had been obtained from the County Council to develop an urban farm i.e. a farm within the city.

Within the last couple of years the farm has developed to its current position where we now have a barn where the animals are housed at night, also containing an office, kitchen and toilets. At present the farm has five goats, two lambs, several rabbits, twenty ducks and approximately fifty chickens.

The aim of the project is to bring something of country life into the inner city, and also to enhance the environment by developing a site which was previously waste ground.

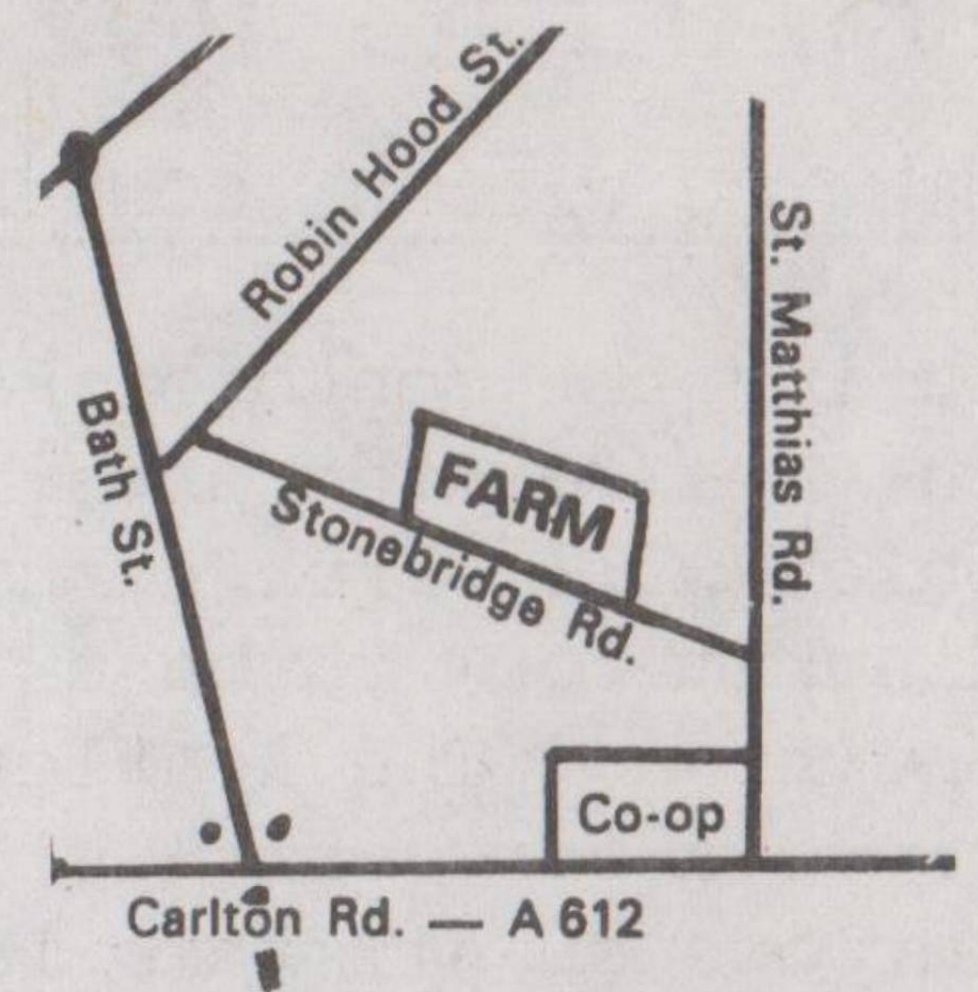
As well as tending the animals, milking, feeding etc. the farm has a market garden area, which hopefully will become increasingly productive. On this we aim to grow some vegetables to sell to the local community and others to help feed the livestock.

Being a community project the farm is somewhat of a centre for activities within the area - organising such events as day trips to farms, markets etc, and on-site events such as bonfire night, sports days, summer fete days, and kids Christmas party etc.



STONEBRIDGE ROAD,

ST. ANNS,



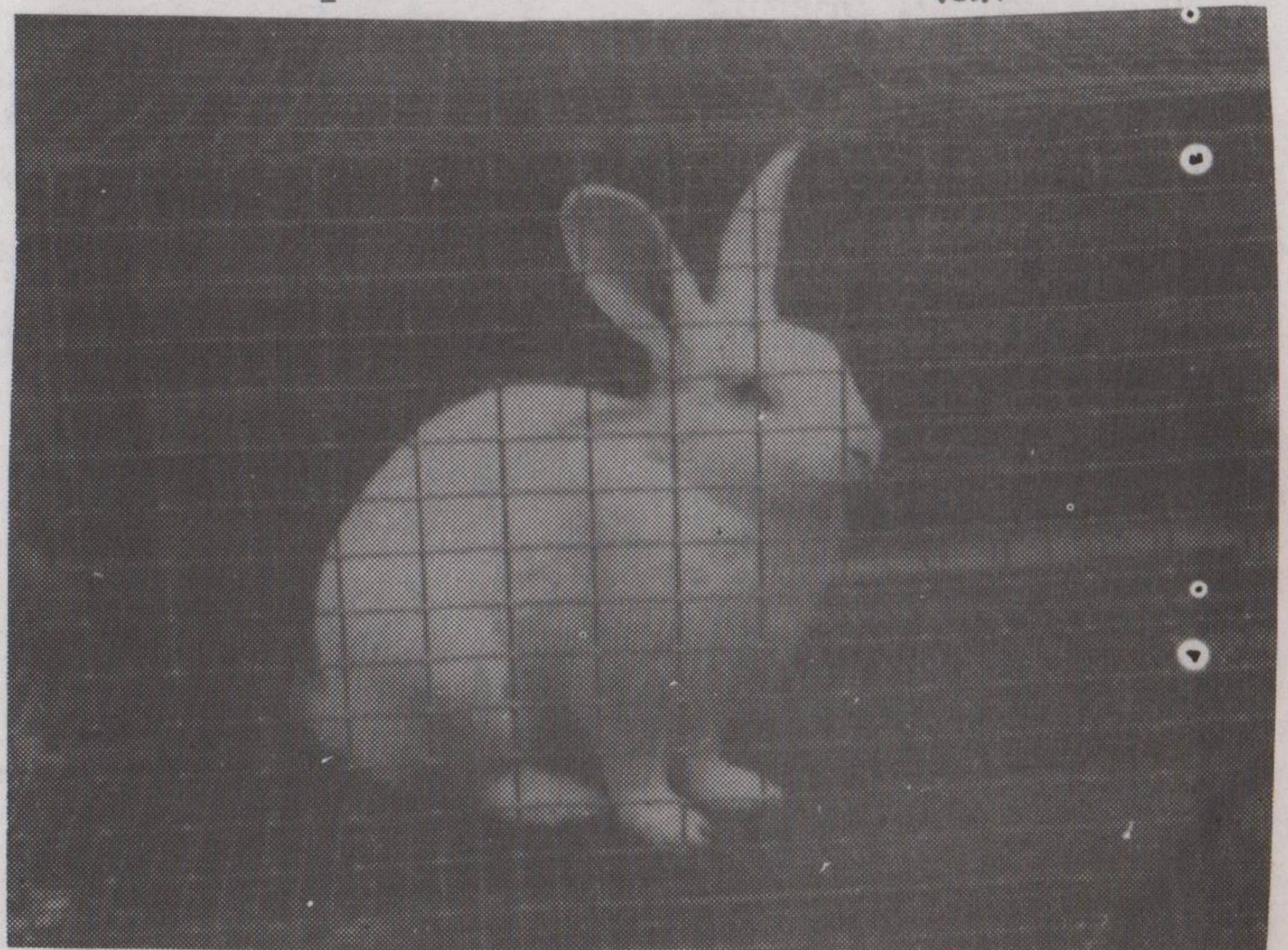
The farm, being a voluntary project run by a Management Committee comprising predominantly of local residents, is necessarily run on a tight budget. However, grant applications have been submitted, which, if approved, will result in the construction of a community building - at least somewhere warm where farm meetings, talks, and groups such as "mums and toddlers" may perhaps meet.



The farm is currently staffed by five adult workers; two of whom are employed through M.S.C. to supervise a team of young school-leavers employed on a job creation scheme. We are open seven days a week and are free to visit, so if you are interested in our project, or simply would like to bring some bread to throw to our ducks, then please do not hesitate to call.

We also have a supply of fresh farm hen and duck eggs, goats milk - certainly a novelty within the inner city of Nottingham, and these can be purchased at reasonable prices.

Ian



TRAFFIC IN SNEINTON

4

T.R.A.C.S. have moved!

HOW YOU WILL BE CONSULTED

During the month of February each household in the Sneinton area will receive a leaflet which will offer a number of solutions in diagram form to ease the traffic flow in Sneinton. The leaflet will ask you to complete a form which will be collected. The purpose of all this is to establish what your views are on the schemes that are being proposed. As you will be aware TRACS has over the last two years spent a great deal of time pointing out to the Council that Sneinton is now an area with high traffic flow (especially large vehicles) and an associated high accident rate. We've often asked how many more must be injured or die before some rational scheme is applied to Sneinton? The result of this pressure is this "consultation process". Of course TRACS accepts that this isn't a victory - the only victory will be when we've rid Sneinton of physical and environmental damage these heavy flows of traffic cause.

TRACS asks you to look out for the following:

1. Any press announcement regarding the leaflet.
2. Read your next "Sneinton Voice" which will carry a detailed analysis of our traffic situation.
3. Talk amongst the family about our traffic problem.

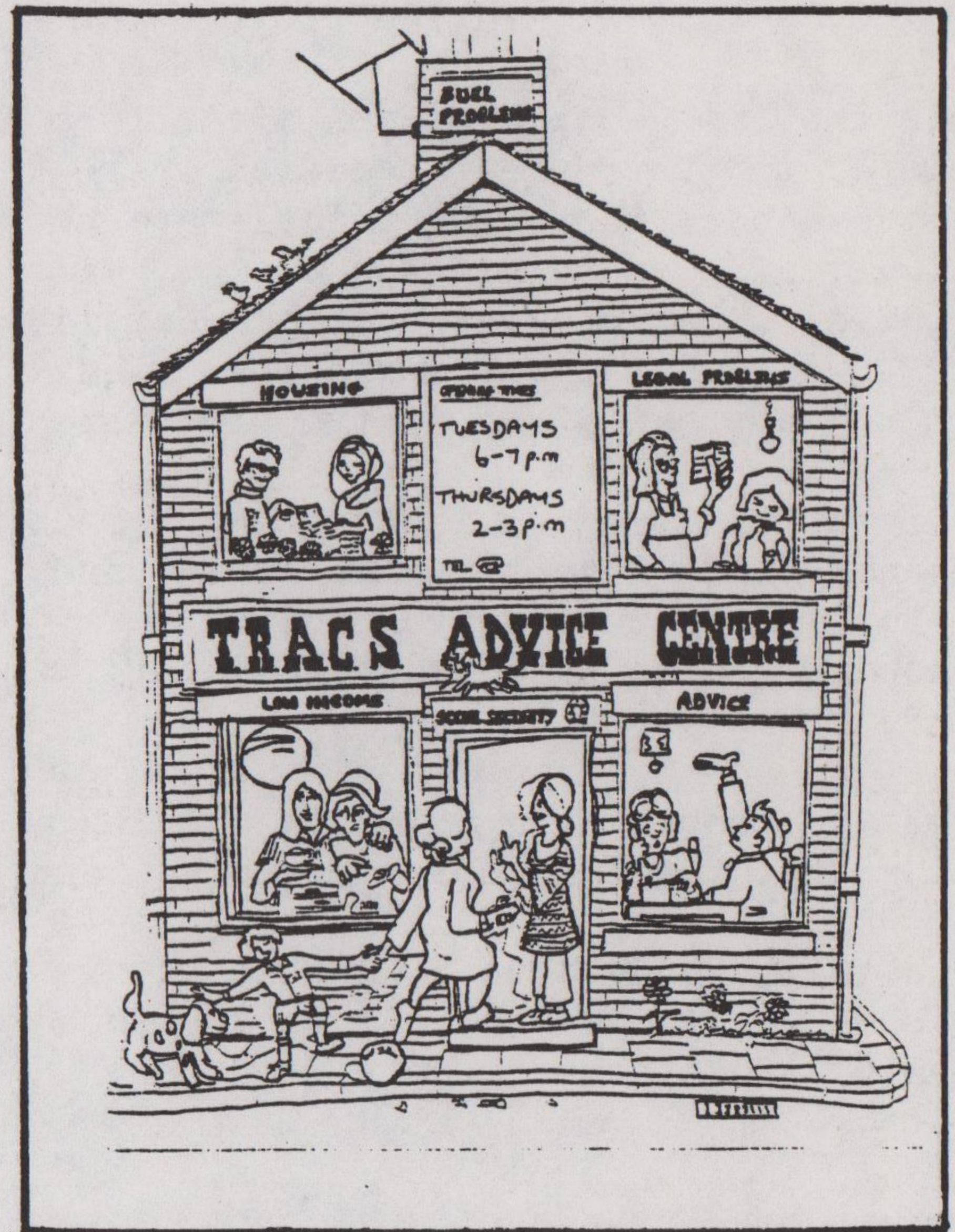
TRACS itself will be producing its own proposals which will be sympathetic to our shopkeepers, but at the same time will offer a solution to the problem.

Green X

PUBLIC MEETING

The Inner City Executive has organised a public meeting in Sneinton which will have taken place by the time we go to press. The Council have 4 million pounds to spend on special projects in Nottingham and will be asking for your views on what's needed in Sneinton, we will be reporting on what took place in the next issue of the 'Sneinton Voice'.

The Tenants Association has moved premises from Kentwood Road to a bright warm house at 26 Lyndhurst Road. We are having an OPEN DAY on TUESDAY FEBRUARY 16TH from 10am onwards and will be serving free coffee all day. We'd like to see you all and hear about what you'd like to see done in Sneinton - what needs changing - What needs improving - See you on the 16th!



NO JOB TOO SMALL

**GAS BOILERS SERVICED
GAS FIRES FITTED & SERVICED**

E. M. GAS TRAINED

**WASHING MACHINES, SINK UNITS,
TOILETS & BATHS FITTED AT
REASONABLE RATES**

**GAS COOKERS DISCONNECTED
& FITTED THE SAME DAY**

PHONE PAUL ON 604072

I CAN WORK AFTER 5 O'CLOCK

FURNITURE SALE

Suite from £170
3' Divan inc headboard £49.95
4'6" Divan inc. Dralon headboard £85. 5yr guarantee on all our Divans.
Combination wardrobe from £57. Large range of chest of drawers in teak & white.
Bookcase in white £14.50
Save £7 on TV/Coffee table now £10.50

While stock last
Wall Unit's from £118
No deposit term available on written request. Free and immediate delivery!

A & G BREDICE

(Home Furnitures)

165/167 Sneinton Dale

We also stock a large range of carpets from £2.35



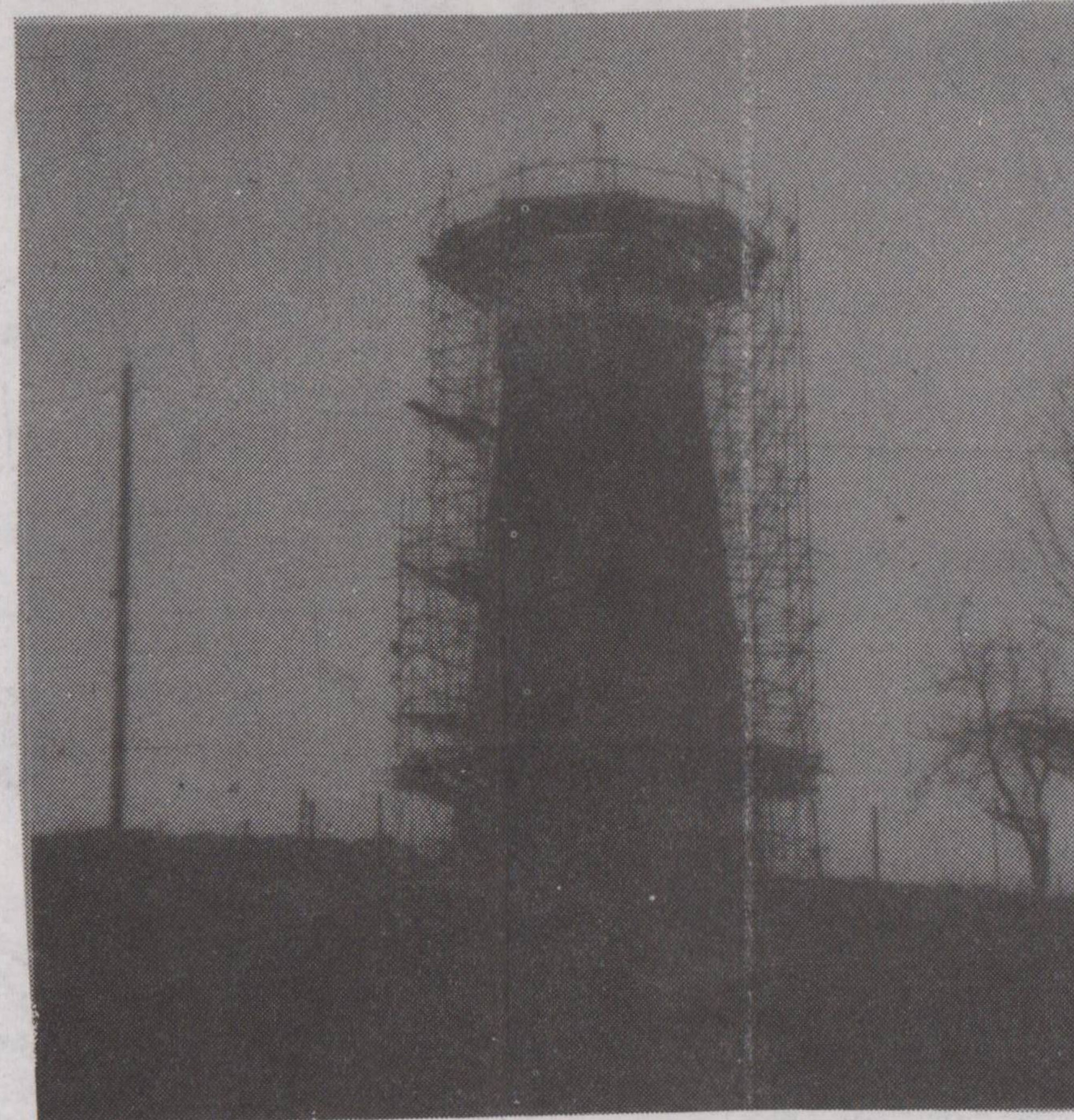
CONSERVATION - continued from front page

We propose to summarise this publication as a guide to readers of the Voice, starting with the historical background to the part of Sneinton concerned. In the next issue we will publish details of the recommendations and proposals.

Historically, Sneinton with the Hollows and Hermitage, and its church and mills - had a distinct identity of its own. Yet it had also a direct link with the city in that both were settled, in about 900 AD, by Anglo Saxons under a leader named Snot.

From his name the two places became known as Snottingham and Snotington. Subsequently the first letter was dropped in each case, and also Snotington became corrupted to form the present name of Sneinton.

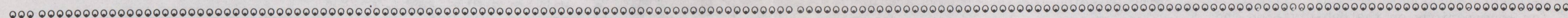
Coincidentally, both Nottingham and Sneinton were initially built on Sandstone hills with cave dwellings. In the case



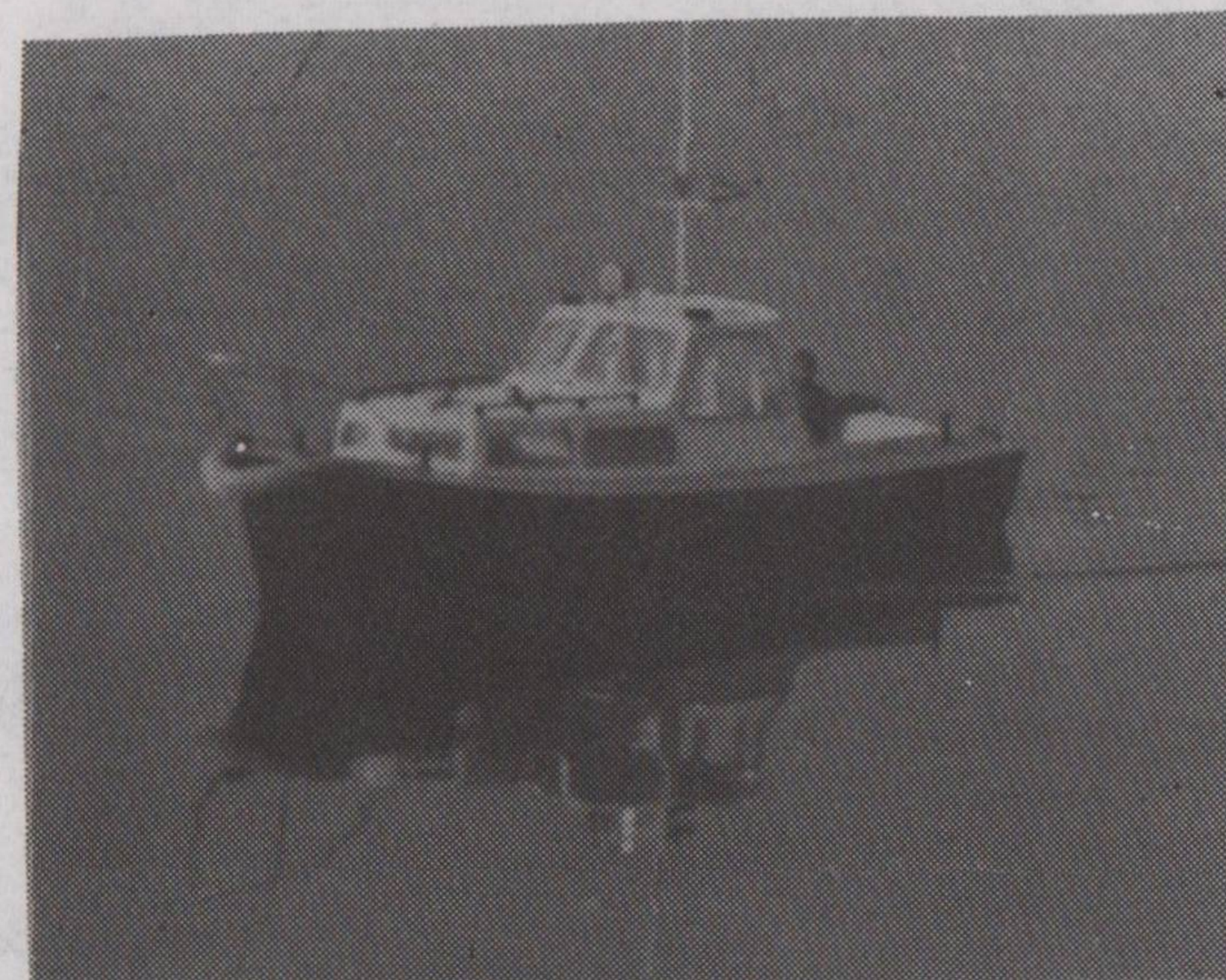
of Sneinton some of these formed part of the living accommodation within the present century which must be unique in the history of this country.

Sneinton was a rural community until relatively recent times, and the area between the top of Windmill Lane and the Dale was still being farmed little more than fifty years ago. There is still a typical farmhouse of the last century almost opposite Highcliffe Rd. Later, with the enclosures of the mid-19th century, the Victorian builders developed the surrounding area extensively and by about 1900 the district was a densely populated suburb of Nottingham, having been incorporated with the city in 1877. Most of the building of quality took place in the Castle Ct. Hollows, and Dale St. area and was occupied by the wealthier people in the community, but as the population expansion continued they preferred other company than that of working class neighbours and left their residences and roads to a long period of decline.

Details of the proposals in the draft policy will be published in our next issue.



Colwick Park

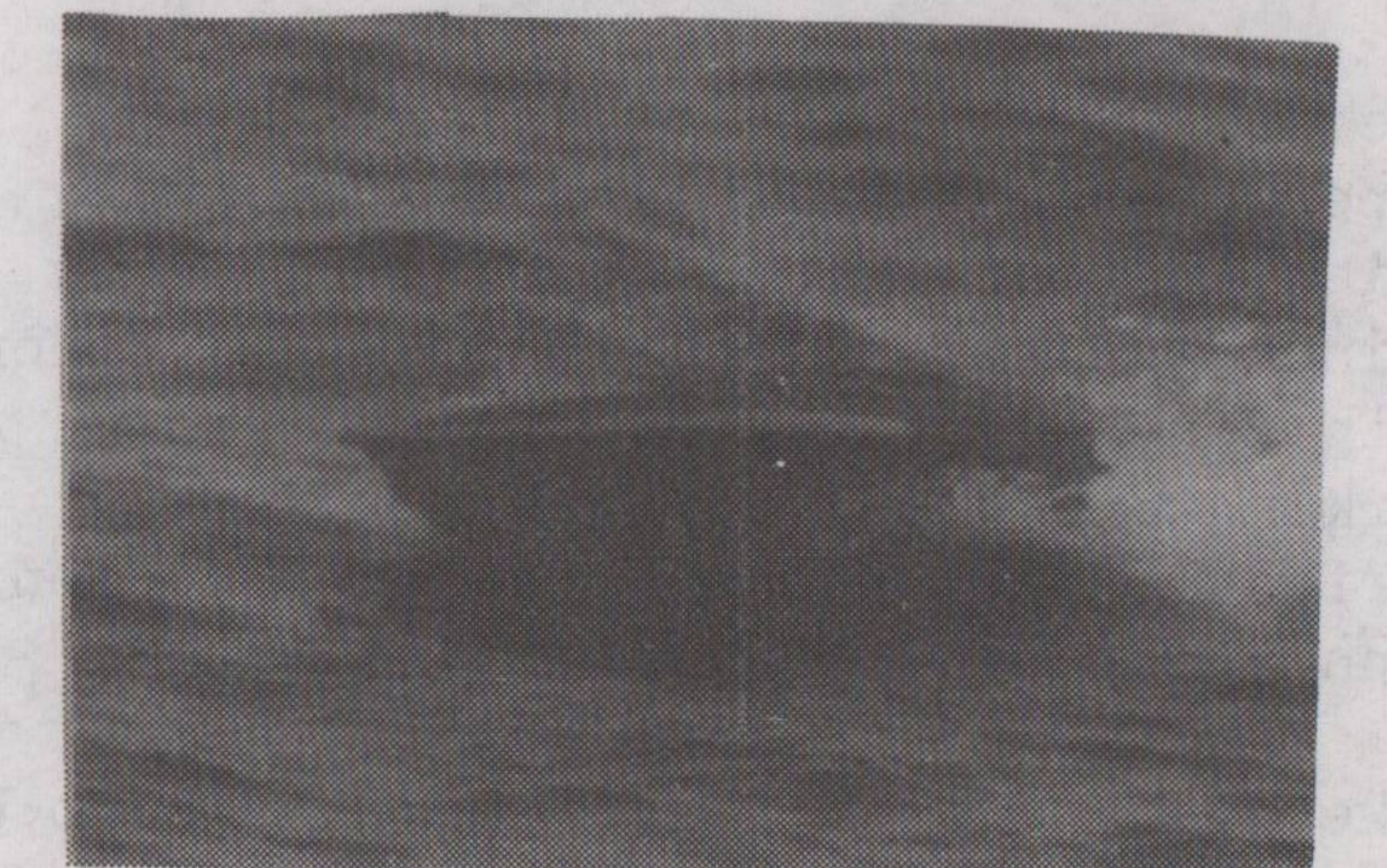


One of the amenities provided in the Park is a section of Colwick Lake which is separated from the rest by wooden booms, and occupies a large area.


This is used by the Nottingham Model Yacht and Power Boat Club (not in the winter months of course) for their model boats. These are usually power boats capable of very high speeds and are functional in so much that they are not designed to be copies of full scale power boats.

Races with other clubs take place and onlookers may find themselves invited to act as timekeepers for particular boats. The illustrations shew a model power boat turning at speed during a race, and a model pilot boat, with figure, cruising in more placid waters.

Sailings will begin again about March and take place on Sunday mornings and one evening also during the week, when the hours of sunlight make it possible.



金禧
KAM HEI
 CHINESE TAKE-AWAY AND FISH AND CHIPS
MENU
 72 TRENT RD., SNEINTON DALE NOTTINGHAM
 TELEPHONE: 54616
 Monday to Wednesday 6 p.m. to Midnight
 Thursday to Saturday 12 noon to 2 p.m. 6 p.m. to 12.30 a.m.
 Sunday 6 p.m. to Midnight
 Orders by telephone are welcome
 FREE OF V.A.T.



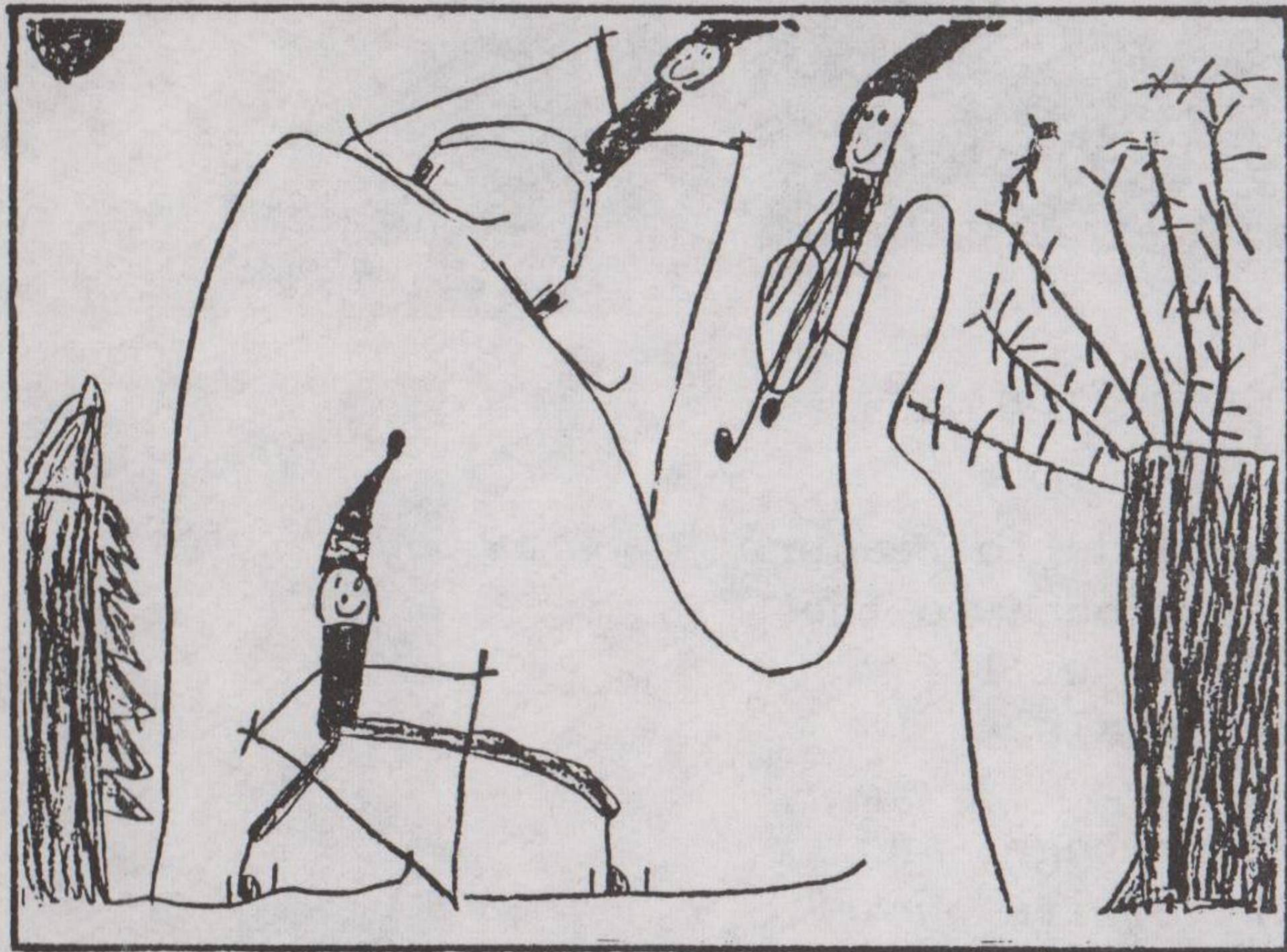
all building repairs
 Mr. Graham Spencer
 12, Holborn Ave.
 • Roofing • Concreting • Re-painting
 • Tiles • Painting • New windows
 • Slates • Aqua Sealing • Painting and
 • Ridge Tiles • Stacks reduced • Decorating
 ALL WORK GUARANTEED - NO JOB TOO SMALL!
 FREE ESTIMATES!
 Phone 590868
 We will beat any genuine written quote!

DAWSON'S BAKERY
 149 SNEINTON DALE, NOTTM tel 590360
 For the best Fresh bread and cobs in Nottingham
 Also the new cooked meats counter with sausage at 66p per lb and middle bacon at 108p per lb

COPPERLAMP NEWS
 175 Sneinton Dale (opp. Dale Hotel)
 Papers, mags, Books, Cigs, All Stationery, Tobacco, Cigars, Sweets, Drinks.
 Toys & Games at greatly reduced prices!!
 * WE STOCK A LARGE VARIETY OF VALENTINE CARDS! *

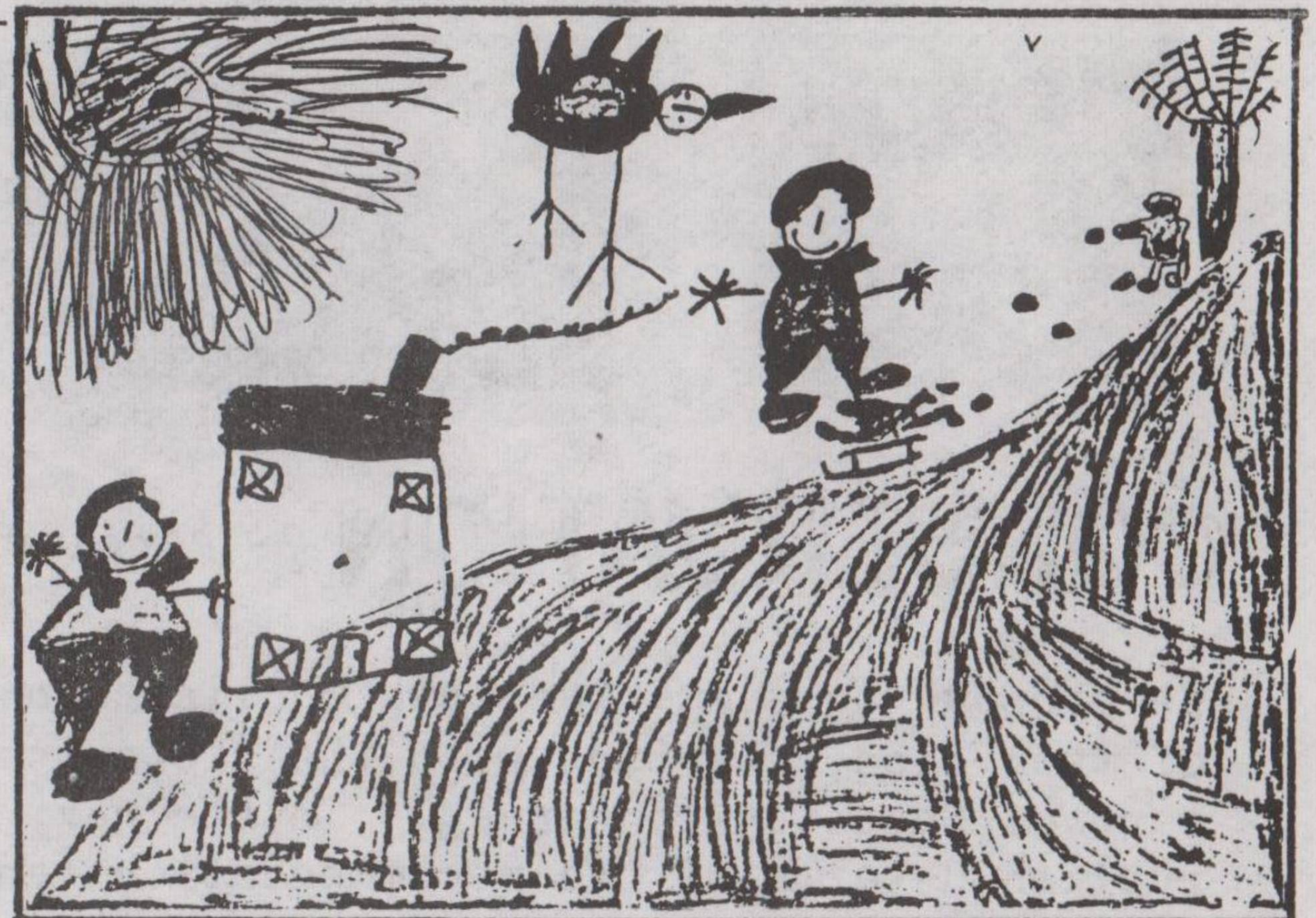
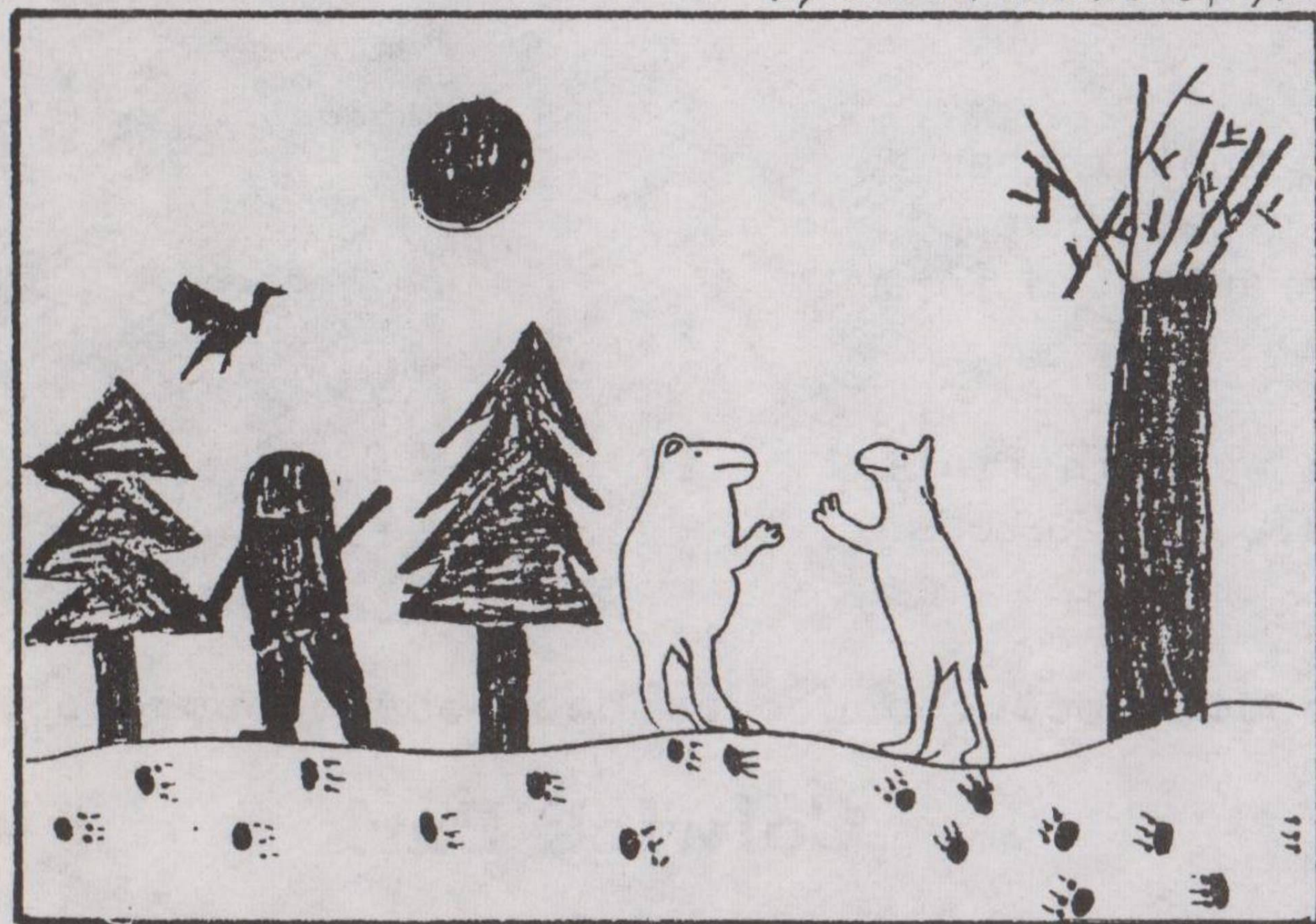


DRAWING COMPETITION



by DREW SMITH, 5yrs.

by JASON HOLROYD, 7yrs.



Theme: WINTER

by Lisa Britton, 6yrs.

The drawings were chosen by :-
 Mr. Brian Shaw of Westwood Road.
 Next month's theme: Portraits

It tickled me....

....When Helen, my 3 year old grandchild said to me : "Nana, what colour was your hair before it got old?".

When she was scratched by a cat, she said to her mum: "Look, the cat's just bit me with its toe!". (from Mrs. Taylor)

Readers!

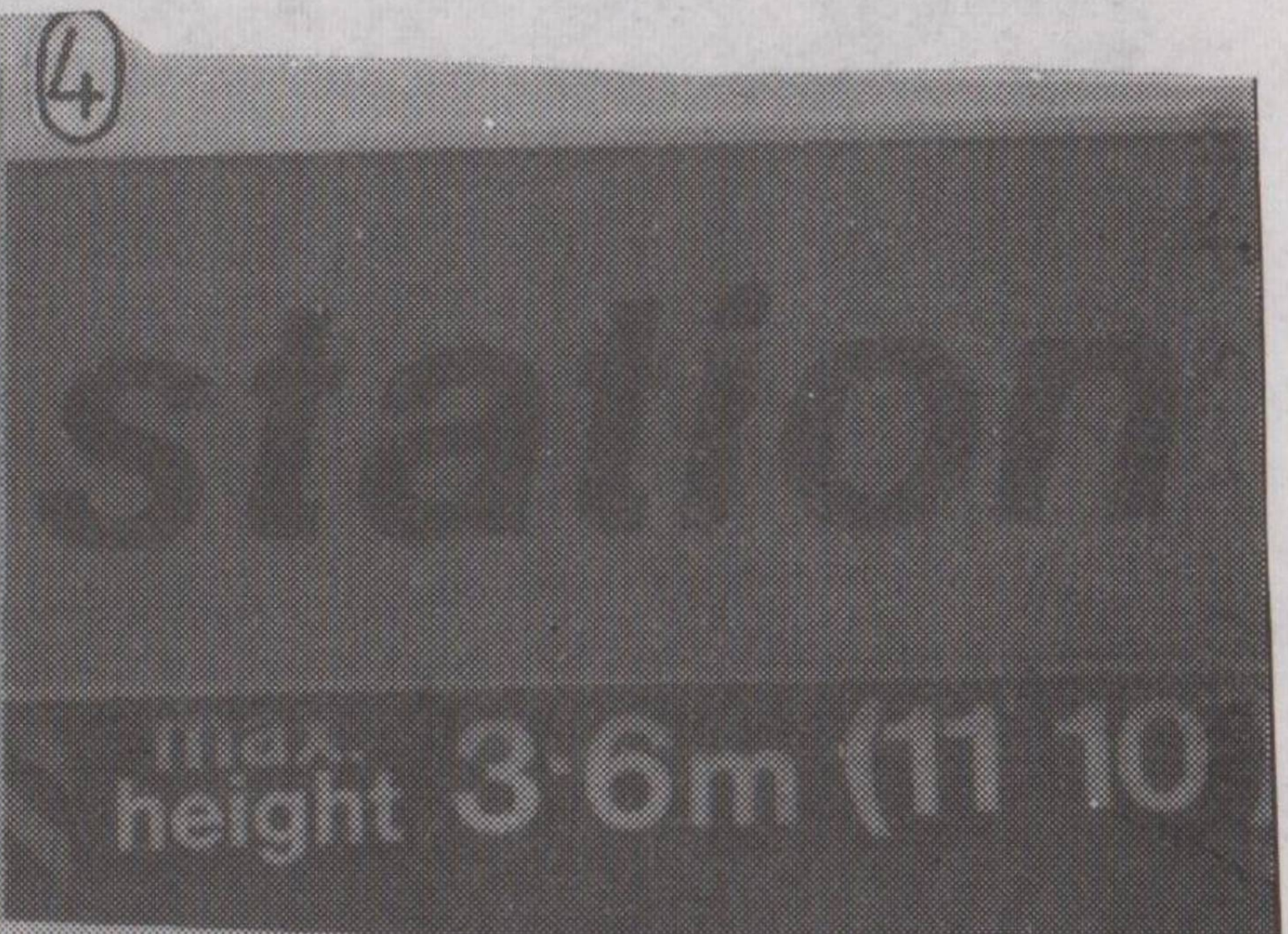
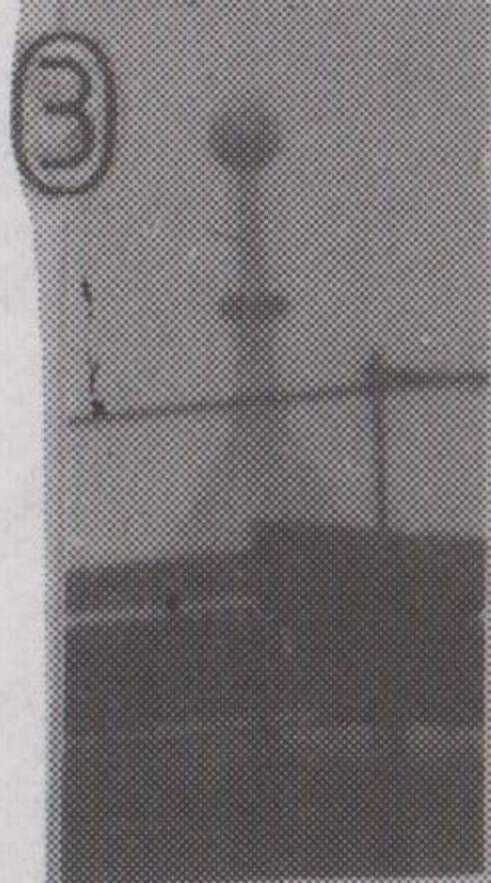
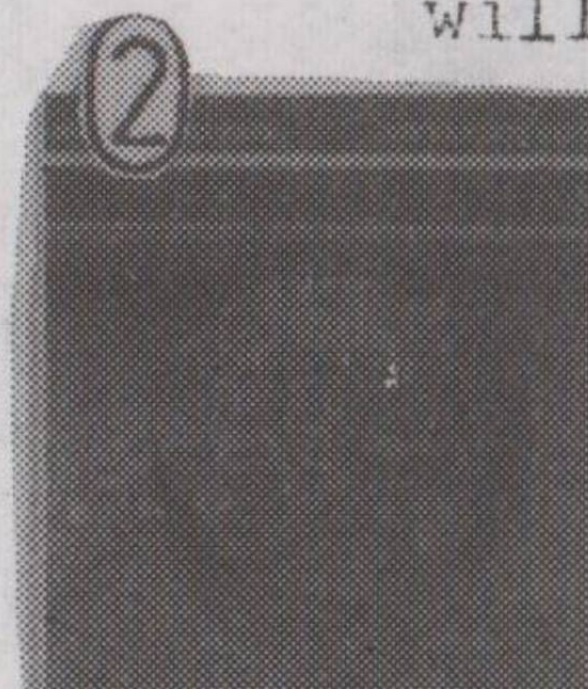
Please send us jokes, stories, experiences and things that tickled you, but note: We prefer the 'home made article'!

PICTURE QUIZ

Can you identify these local locations ?
 If you think you know where they are write them on a post-card and send it to:-
 Sneinton Voice (Competition)
 26 Lyndhurst Rd.
 Sneinton.

Entries to arrive by 20.Feb '82 please.

First all-correct entry out of the hat will win a £5 prize.(YES FIVE POUNDS !)



RALPH+DOREEN CHEETHAM

General Grocers

- COOKED MEATS • ALL TYPES FROZEN FOODS
- HOME MADE BREAD AND CAKES

42 Colwick Rd

Tel. 55673

YOUR COMMUNITY POLICEMAN

-5-

P.C. 1684 Jock Graham.- Meadows Police Station

I have been asked to write an article concerning my own and other officers duties in policing Sneinton and hopefully I will be able to throw some light on certain aspects which have affected both the Police and the Sneinton community as a whole.

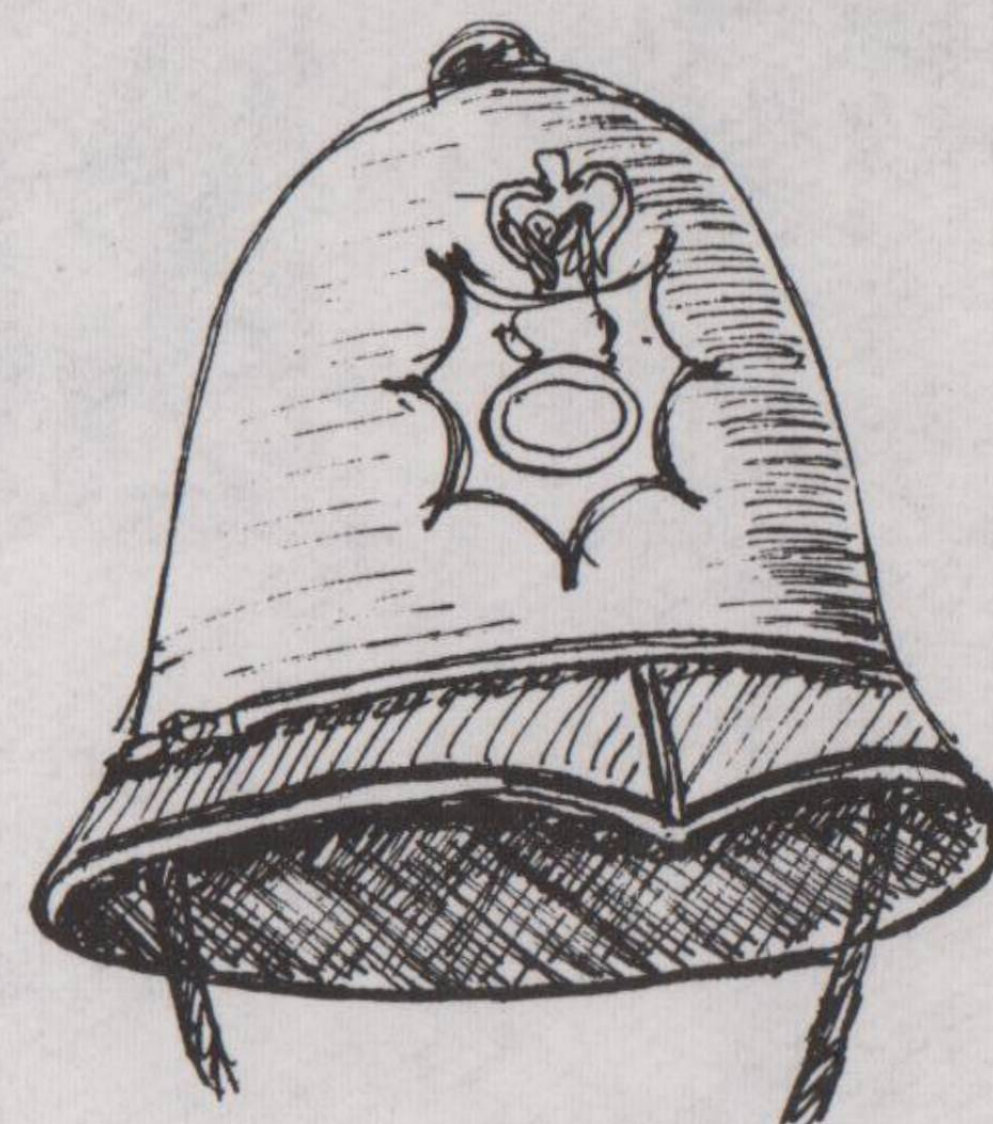
First of all let me introduce myself, I am P.C. 1684 'Jock' Graham. On leaving the Regular Army in 1972 I joined the then Nottinghamshire Combined Constabulary in 1973. Since then I have completed 8 years service all on the Meadows Sub Division which is one of three that form 'S' (for South) Division of the now Nottinghamshire Constabulary.

The Meadows Sub Divisional Headquarters are situated on Station Street next to the Bentink Hotel and opposite the Midland Station. Many of the Inspectors, Sergeants and Constables have all served for long periods on the Sub-Division and so are intimately aware of the problems of the area.

The Sub Divisional Commander, Superintendent Kirkham and his Deputy Chief Inspector Shilton have recently joined the strength of the Sub-Division. Both men have had previous experience of working Sneinton and have moulded in perfectly with the smooth and efficient running of the station.

Like most of you I have seen and also been affected by the redevelopment and changes within the area. I remember working out of the Sneinton Hermitage Police Station which was closed in 1974. I know that this closure came as a disappointment to some of the older residents who had been used to a Police Station on that site since time immemorial but it was felt that due to the close proximity of Station Street and the much better facilities it offered, it was really not cost effective to keep Sneinton Hermitage open.

It should also be remembered that Sneinton is still very well served, bearing in mind the Sub-Division extends from Colwick in one direction to Dunkirk in the other.



Before I joined the Police the 'Panda' car schemes had been introduced but now largely due to cost and the conviction that the public really do prefer to see and talk to their Police many more foot patrols have been introduced. We still have 'Panda' vehicles but they are now largely used for answering emergency calls only.

In March 1979 following an unsuccessful petition to re-open the Meadows Queens Drive Police Station the Chief Constable agreed to extend a successful experiment of 'Community Constables' which had operated at Clifton to the Sneinton and Meadows areas. I was chosen as the Community Constable for Sneinton, P.C. Adrian Clare being selected for the Meadows area.

(Ctd. next issue)

J.G.



116 SNEINTON DALE

FORMERLY
SUGAR AND SPICE

**ROOM SIZED CARPETS AT
REASONABLE PRICES**

**MATS FOR EVERY ROOM
SPECIALISTS IN NURSERY MATS**

**NOW DEALING IN
SECOND-HAND FURNITURE**

POCKET MONEY TOYS.
CALL IN WITH NO OBLIGATION TO BUY

PUB SPOT

In the latest of our occasional articles on the pubs in Sneinton, we focus our attention on the "Earl Manvers" on Colwick Road.

I am sure that even the most ardent fan of the pub will admit that it was beginning to get a little run-down, and obviously Messrs. Shipstones had the same thought, for last year they began to renovate and improve the premises; part of their policy of improvement of local pubs. This policy has been much maligned else where, the so-called "Fun Pubs" have got a bad reputation in other areas.

However the "Earl Manvers" has been tastefully modernised and redecorated and has attracted a different type of people. Don't think, though, that the "Manvers" is a jet-set pub, where locals are not welcome. The small cubby-holes retain the traditional atmosphere, but the decorations and fittings make the pub lively and modern. The pub is owned by Shipstones and the full range of their excellent products is sold. The beer is traditional, served by electric pumps and at 48p for bitter & 46p for mild (51p & 49p in the lounge) represents good value for this day and age.

There are regular disco evenings on Thursday and Friday evenings with occasional live music nights. There are also 3 pool tables and the ever-present fruit machines and Space Invaders games.

The two darts teams run from the pub, one each for ladies and gents, are both in their respective A divisions in the Shipstones leagues and are both doing "Quite well". The sporting links at the Manvers go further than the usual pub games as the Manvers is also the headquarters of the Sneinton Boxing Club.

Resident manager John Grocock and his family have a great interest in the area and want to retain the local image of the pub, as John said "This pub is my hobby as well as my job." By keeping the local image he has brought a new lease of life to the pub and is promoting new interest in the Sneinton area, something that Earl Manvers would have been proud of.

Earl Manvers was a resident of Colwick Hall and the first pub in Sneinton to bear his name was on Sneinton Hermitage. The present building was erected at the turn of the century when the old pub was pulled down, partly because it was old and falling down but mainly due to the coming of the railway.



The pub was a "home-brew house", that is like many pubs it brewed its own beer, and in the old Hermitage premises the brewing was in caves behind the brick face. The caves can still be seen on the Hermitage.

However the "Earl Manvers" is now looking to the future when it becomes the entertainment centre of Sneinton.

A.B.

D. H. UPHOLSTERY

31-33. MANVER'S STREET,
NOTTINGHAM.
SHOP TEL. 50232
AFTER 6pm 877548 OR 583922

RE-UPHOLSTERY SERVICES

- 3 PIECE SUITES
- ANTIQUE FURNITURE
- CARAVANS
- DINING CHAIRS
- HEADBOARDS
- BENCH SEATING
- STOOLS ETC.

NO JOB TOO BIG OR TOO SMALL
OVER 500 PATTERNS TO CHOOSE FROM

FREE ESTIMATES
COMPETITIVE PRICES

Usually in Stock for Sale

THREE PIECE SUITES
FIRE SIDE CHAIRS
BED SETTEES
CORNER UNITS

CHECKPOINT ✓

One topic that has regularly been brought up at TRACS Welfare Rights sessions is the position of V.A.T. on windows and glazing. The Customs & Excise rulings on this are very confusing, but can be summarised as :-
 The provision of double glazing for the first time, into new or existing windows is zero-rated (that is it carries V.A.T. at 0% ; in effect there is no V.A.T. to pay.)
 The provision of new windows in an existing wall (the knocking-out of bricks and putting in a frame etc.) is also zero-rated.
 The provision of larger or smaller windows into an existing window (such as making the window into a French window, or making a window smaller by bricking-up part) is also zero-rated.

However the following are all standard-rated which means that when the work is done by a builder, glazier, etc. who is registered for V.A.T., he must charge V.A.T. at the standard rate, which at the time of writing is 15%, and he must pass this on to the Customs & Excise:-

Replacing panes of glass in existing windows.

Replacing one type of frame with another such as wood for aluminium, sash for full plate etc.

Repairs to glazing work, painting frames and incidental work to windows.

Replacing double-glazing with single.

The supply (rather than supply and fitting) of ready-made double-glazing units which are not fitted by the supplier.

We hope this helps to clear up any problems, but if you have any further points of difficulty PLEASE contact the TRACS Welfare Rights Service, or telephone Customs & Excise on Nottm. 40451 .

OAKDALE D.I.Y. CENTRE
 Ltd.
 For all your home and garden needs
PLUMBING MATERIALS AT TRADE PRICES
 90 Oakdale Rd.
 Nottingham 874537

Still the best value in SNEINTON

130x185mm (1/2p)	£22.00
130x 90mm (1/4p)	£11.50
60x 90mm (1/8p)	£6.00
30x 90mm	£3.50
60x 40mm	£3.50
30x 40mm	£2.50

Ring 54254

MODERN BEDDING

SNEINTON HERMITAGE - COLWICK RD.
 CORNER MEADOW LANE · NOTTINGHAM
 open till 7.30 pm

• ESTABLISHED HALF A CENTURY •
 INDEPENDENT SPECIALISTS

BUY A LUXURIOUS NEW BED NOW!

CLEAR OUT THAT SAGGING BED!

70-100 DIVAN SETS IN STOCK -
 PLUS AS MANY MATTRESSES

QUALITY BARGAINS
 SLUMBERLAND, MYERS, ETC.
 LIGHTNING DELIVERY!
 ALL DISTRICTS!
 (OLD REMOVED)

WARNING!
 BEWARE SO-CALLED CHEAP BEDS!
 THEY CAN HARM HEALTH!

SPECIAL SIZES ALLOWANCES POSSIBLE!

EIGHT SIZES:
 2'6"
 3'
 3'6"
 4'
 4'6"
 5'x6'6"
SHORTY:
 5'9" x 3'
 2'6"



The Melting Pot

Chinese Chicken and Sweetcorn Soup.

Ingredients

- 1 Breast of Chicken
- 2 Egg Whites
- 1½ pints chicken broth (made from 2 chicken stock cubes)
- 1 7oz can Sweetcorn Kernels
- 1 Tablespoon Cornflour
- 3 Tablespoons Water
- 1 teaspoon Salt
- 1oz Cooked Ham

Finely mince the chicken flesh and mix thoroughly in a bowl with the egg whites.

Bring the chicken broth to the boil in a pan. Add the sweetcorn and then stir in the cornflour mixed with the water.

When the contents re-boil, stir in the chicken mixture and stirring gently, add the salt. Simmer for 7-8 mins over a low heat.

Chop the ham finely. Pour the soup into a large soup dish and garnish with the chopped ham before serving.



牧羊人的焗餅 (Shepherd's Pie)

供四至六人食。

用料：牛肉碎八至十二安士

洋葱一個大的

調味品

活士得汁一茶匙

肉汁八份之一品脫

麵粉一湯匙

薯仔一磅

牛油或人造牛油兩安士

鮮奶三至四茶匙

製法：將洋葱切碎後和牛肉碎炒至金黄色，洒放麵粉在上，加入調味品，活士得汁和肉汁，使之浸潤入味，將薯仔煮熟後壓碎混和鮮奶及牛油，然後將那些牛肉碎放入攪鍋或焗餅盤內，再將已碎的薯仔平放在牛肉碎上，請用叉使薯仔放得均勻，放在焗爐中焗或烘烤至薯仔表面呈金黄色，取出後用些芫茜點綴和請趁熱來吃。

Recipe by Mrs. Lydia Chong

● SALE NOW ON ●

- LOUNGE QUALITY CARPET from £1.75 sq.yrd
- BEDROOM CARPET £1.75 sq.yrd
- SCOTCHGUARD KITCHEN CARPET £2.95 sq.yrd.
- AMERICAN DEEP PILE
SHADOW CARPET £4.35 sq.yrd
- AXMINSTER CARPET £5.95 sq.yrd
- CUSHIONFLOR £1.75 sq.yrd
- VYNAL FLOORING £1.00 sq.yrd

ALL PERFECTS!

EXPERT FITTING SERVICES AVAILABLE!

- SINGLE DIVAN BEDS,
INCLUDING HEADBOARDS £35.00
- BEDSIDE CABINETS £5.95 each
- 4 DRAWER CHESTS to clear £15.95
- HI-FI CABINETS £17.00

FAST LOCAL DELIVERY!

PROGRESSIVE - MUTUAL - COMPASS FINANCES
CUSTOMERS WELCOME!

D.H.S.S. GIRO CHECKS ACCEPTED!

J. & A. CARPETS, 142 Sneinton Dale Tel. 50562
The Little Shop for the best Deal!

SNIP & CURL HAIRDRESSERS

OPEN SIX DAYS A WEEK
NO APPOINTMENT SERVICE
WE SPECIALIZE IN CUT AND
BLOW DRYING
GENTS HAIRSTYLING

SHAMPOO & SET	£1.50	SENIOR CITIZENS	
CUTTING FROM	£1.00	MON TUES WED	
PERMING FROM	£6.00		
COLOURING	£4.00	S/SET	95p
HIGHLIGHTING	£6.50	CUTTING	65p
BLOW DRYING	£2.00	PERMING	£3.95p
GENTS & SCHOOL GIRLS WASH, CUT, BLOW DRY			£2.50

WE PRIDE OURSELVES IN OFFERING THE MOST COMPETATIVE PRICES IN THE AREA

163 SNEINTON DALE
PH 53972

Sneinton Diary

SNEINTON HERMITAGE COMMUNITY CENTRE

MONDAY

- * 11am-3pm Lunch Club for over 60's
- * 7pm-9pm Junior Youth Club (8-12yrs)

TUESDAY

- * 10.30-12noon Mums & Toddlers
- * 12noon-2pm Bar with pool, darts etc
- * 2-4pm Fun Bingo for all ages
- * 6.30pm English as a foreign language class (women only)
- * 7.30pm Old Time & Modern Sequence Dance
- * 7.30pm Keep Fit

WEDNESDAY

- * 11am-2pm Coffee Bar
- * 2-4 Whist Drive for all ages
- * 8.30-10pm Karate

THURSDAY

- * 11am-2pm Coffee Bar
- * 2-4pm Afternoon Special for Unemployed (table tennis, badminton, pool etc)
- * 7.15-9.30pm Senior Youth Club (13-18yrs)

FRIDAY

- * 11am-1.30pm Coffee Bar
- * 7-10pm Karate
- * 7.30pm Bingo

SATURDAY

- * 10am Karate
- Also available for private functions, parties, weddings, concerts, etc.

TRACS

- * Advice Centre, 26 Lyndhurst Road
Tuesdays 6-7pm and Thurs 2-3pm
- * Fortnightly meetings Thurs 7.30pm at
26 Lyndhurst Road

LYNDHURST LADIES

- * Thurs 4th Feb 7.30pm S.H.C.C.
- * Thurs 18th Feb 7.30pm S.H.C.C.

JUMBLE SALE

- * Sat. Feb. 6th Sneinton Hermitage C.C
Starts 2pm Admission 5p.

TO ALL GROUPS AND ORGANISATIONS IN SNEINTON!

Please let us know your events and meetings, especially if you have not got a publication of your own.

Use the VOICE to let your community know!

Contact us at 26 Lyndhurst Rd. or
Ring 54254

D.B. JONES

113 Sneinton Rd.

MAX FACTOR CREME PUFF only 85p
Buy two for £1.60!!

HALF PRICE BARGAINS
STILL ON!
Perfumes, Nail Varnish, Make-up etc.

Amazing Prices for Developing
and Printing your Films:

12 PRINTS	£ 1.99
24 PRINTS	£ 2.99
36 PRINTS	£ 3.99

FULL REPRINTING AND ENLARGING
SERVICE, ALL ON KODAK PAPER.

MARKA TRAVEL

60 Sneinton Hollows
NOTTINGHAM

NG2 4AA

Tel: 50893

LOW AIR TRAVEL FERRY BOOKINGS HOLIDAYS

from
SNEINTON'S OWN NEW
TRAVEL AGENTS!

