

Sneinton Voice

士靈頓之聲

GKOS ZE SNEINTONU

सनेटन का आवाज

LA VOCE DI SNEINTON

آواز سنیٹن



BENDIGO

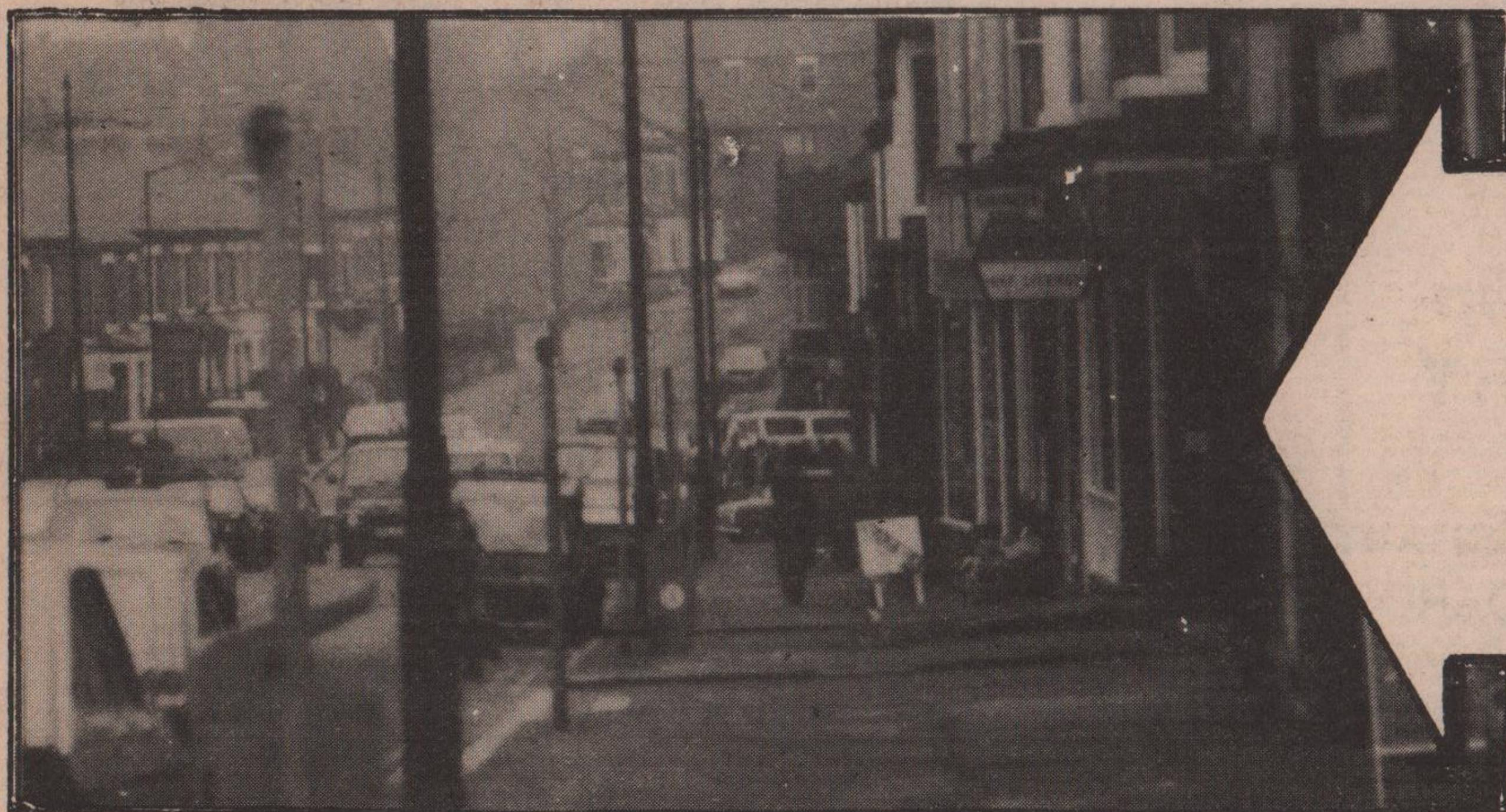
No.9

Distributed free to 3,500 Households



W. Bridgford NOW

Netherfield NOW



Sneinton

?

Some fourteen years ago a group of women decided that the traffic situation was becoming so bad that they decided to provide a blockade of prams on the Boulevard so that some action would be taken by the Council in order to reduce accidents, especially those involving children. Due to their pressure they were successful in obtaining a zebra crossing, however, apart from that and others provided in Sneinton the Council, whilst continuing to voice its concern, has not really grasped the nettle and actually done something meaningful. T.R.A.C.S. has spent a considerable amount of its energies pointing out to the council that: - (ctd. on page 6)

OUR CENTRE

by Evelyn Lucas
(Member)



The district of Sneinton is old
that is true,
But much at our Centre is novel
and new,
On Mondays the 'Tinies' enjoy
so much play;
With painting and sewing to pass
on the day.
The Ladies each Tuesday don
colourful dress,
Mrs Albery's Dance is a smashing
success.

For Senior Members, a quiet
afternoon,
With Whist at the tables now
proves quite a boon
For others it's Bingo, Karate
and Pool,
There's Darts and Badminton to
play after school.

The door of our Centre is open to all,
You'll see all our efforts by
making a call,
Our kitchen provides both coffee
and tea,
The Hermitage people are
"Good Company"

Sneinton Hermitage Community Centre

On Monday evening every week there is a Junior Youth Club at Sneinton Hermitage Community Centre from 7-9 p.m. for 8 to 12 year olds.

The facilities available at the club are netball, volley-ball, badminton, table-tennis, pool, darts, snooker, dominoes, draughts, chess, painting, sewing, knitting, music and in the very near future there will be a complete new disco unit. The only thing lacking at the club is help to run it, at the moment 5 voluntary workers are finding the task of trying to run the club very nearly impossible.

Approximately 40 children attend the club on a Monday evening and all wanting to do something different, many of them are at an age where they need tuition to be able to use most of the available facilities.

In Sneinton I am sure that there must be people with plenty of talent and a sincere interest in children who would be prepared to come along on a Monday evening for 2 hours to help at the Youth Club.

If you can help please come along to the Community Centre any evening after 7p.m. and talk to Catherine Brown or John Hickling or Telephone 54707.

We look forward to seeing or hearing from you.

C.B.

**D. H.
UPHOLSTERY**

31-33, MANVER'S STREET,
NOTTINGHAM.
SHOP TEL. 50232
AFTER 6pm 877548 OR 583922

**RE-UPHOLSTERY
SERVICES**

- 3 PIECE SUITES • DINING CHAIRS
- ANTIQUE • HEADBOARDS
- FURNITURE • BENCH SEATING
- CARAVANS • STOOLS ETC.

NO JOB TOO BIG OR TOO SMALL
OVER 500 PATTERNS TO CHOOSE FROM

FREE ESTIMATES
COMPETITIVE PRICES

Usually in Stock for Sale
THREE PIECE SUITES
FIRE SIDE CHAIRS
BED SETTEES
CORNER UNITS

**SNIP & CURL
HAIRDRESSERS**

OPEN SIX DAYS A WEEK
NO APPOINTMENT SERVICE
WE SPECIALIZE IN CUT AND
BLOW DRYING
GENTS HAIRSTYLING

SHAMPOO & SET	£1.50	SENIOR CITIZENS	
CUTTING FROM	£1.00	MON TUES WED	
PERMING FROM	£6.00		
COLOURING	£4.00	S/SET	95p
HIGHLIGHTING	£6.50	CUTTING	65p
BLOW DRYING	£2.00	PERMING	£3.95p
GENTS & SCHOOL GIRLS WASH, CUT, BLOW DRY			£2.50

WE PRIDE OURSELVES IN OFFERING THE
MOST COMPETITIVE PRICES IN THE AREA

163 SNEINTON DALE
PH 53972

Colwick Park

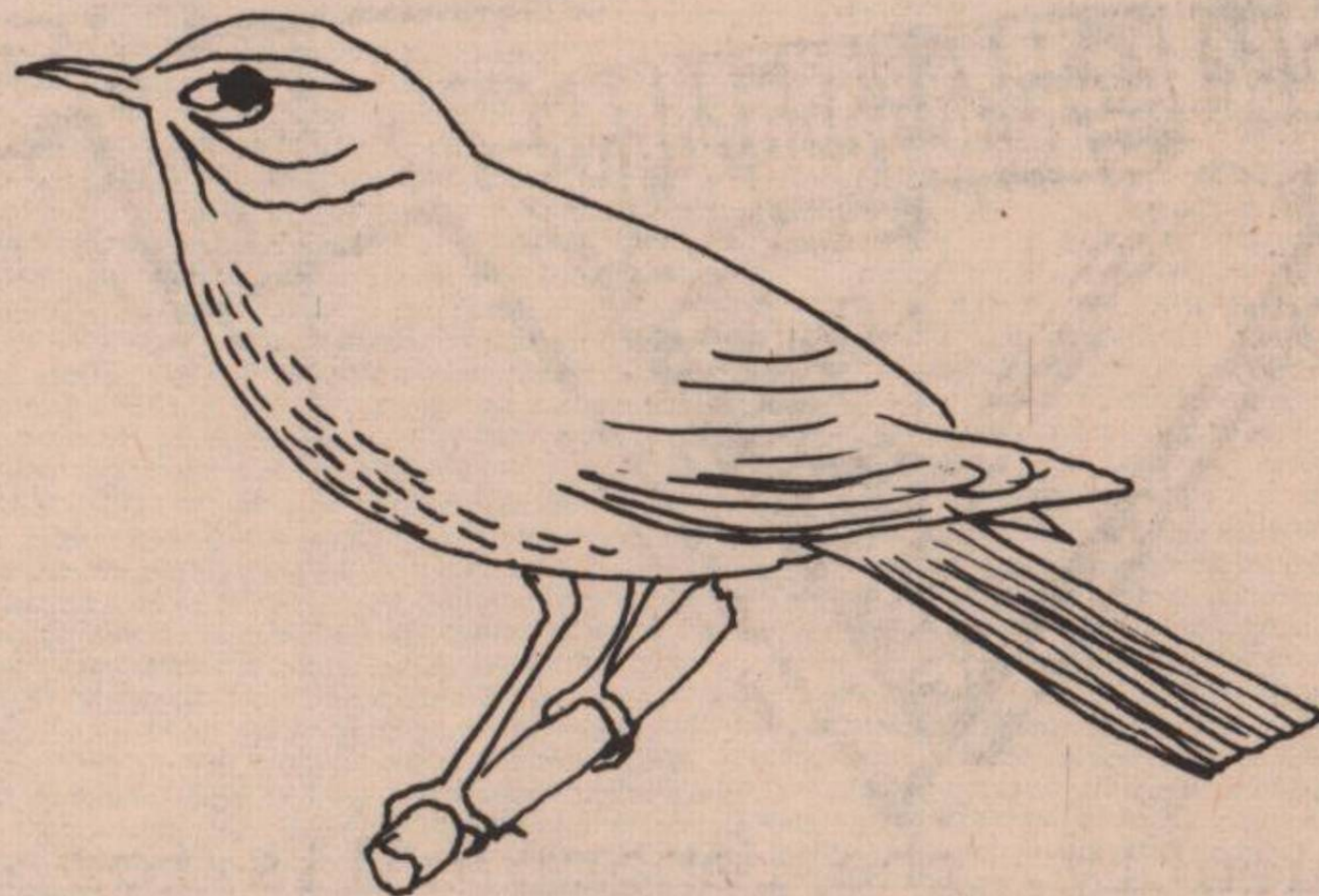
-3-

The start of the winter period gave no clues as to the "surprise" it was to give us a few weeks on. Towards the very end of October and into November the wintering wild-fowl began to arrive at Colwick Park. These mainly comprising wigeon and pochard in good numbers; gadwall, shoveller and goldeneye in reasonable numbers with many less than the usual teal. A surprise visitor on 2nd December was an escapee black swan who soon moved on with its travels. By mid December because of the extreme cold there was much general southerly movement of birds which are normally seen locally in larger numbers such as lapwings, fieldfare, redwing, skylark and finches. The lakes became totally frozen over causing the waterbirds to move onto the River Trent. A mild break in the weather did not last long, really only an extension to the New Year period then back to the cold for another two weeks. This followed by a much milder spell resulting in many of the plants to rapidly come into bud and many of the birds to start courtship displays and pairing up. During the early mild



period many bramblings were seen in flocks feeding in the plantation areas. Whilst in the milder spell after mid January often the activities of woodpeckers could be heard and occasionally seen in the woodland areas.

The long and severe cold spell caused high mortalities in all bird species, especially in the smaller birds. However, the full extent will not be known until the breeding season is well underway.



Keep a watch for the returning migrants, early arrival warblers from late March; through April with swallows etc and eventually the final arrivals, swifts. All should be at Colwick Park in good numbers.

The trout fishing season starts at Colwick Park on March 18th, so when walking around the trout lake watch out for and keep clear of the anglers 'back-casting' - remember the imitation fly at the end of the line also carries a barbed hook!!

NE

MARKA TRAVEL

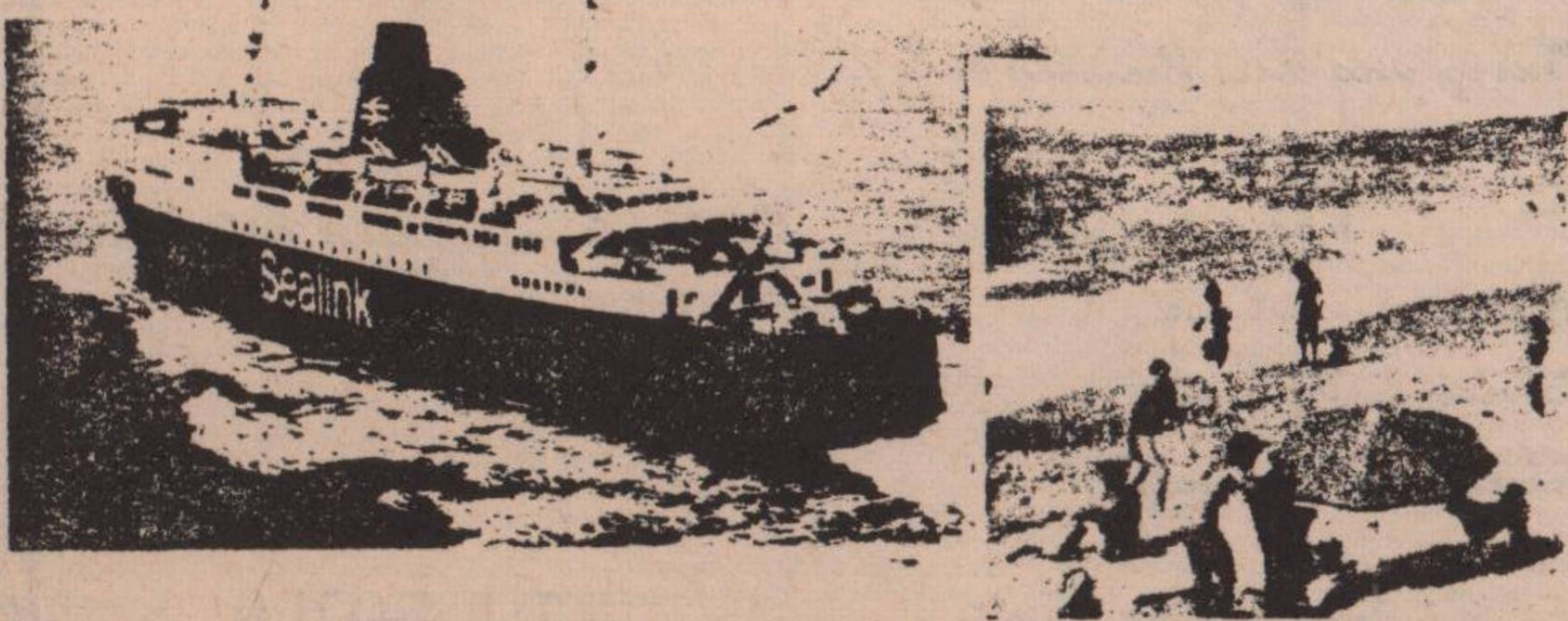
60 Sneinton Hollows
NOTTINGHAM

NG2 4AA

Tel: 50893

LOW COST AIR TRAVEL FERRY BOOKINGS HOLIDAYS

from
SNEINTON'S OWN NEW
TRAVEL AGENTS!



MAID MARIAN FOOD STORE

190 COLWICK ROAD

GENERAL STORE AND OFF LICENCE

All Cigarettes are 4p off Packets of 20

OPENING HOURS:

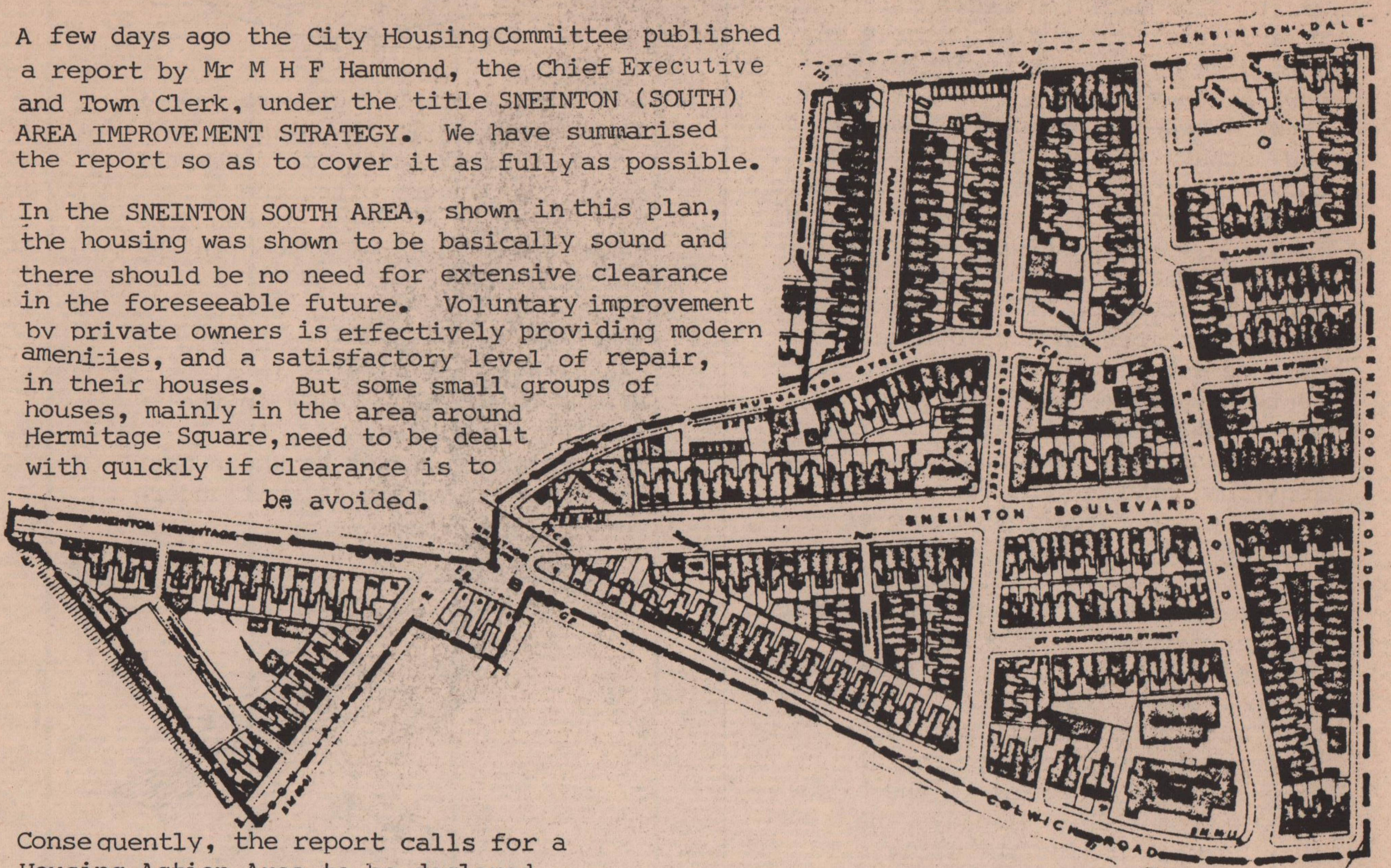
MON - SAT 9.30 - 2pm
3pm - 9pm

ALSO SUNDAY 12 - 2pm 6.30 - 8.30pm

Housing in Sneinton - Part 1

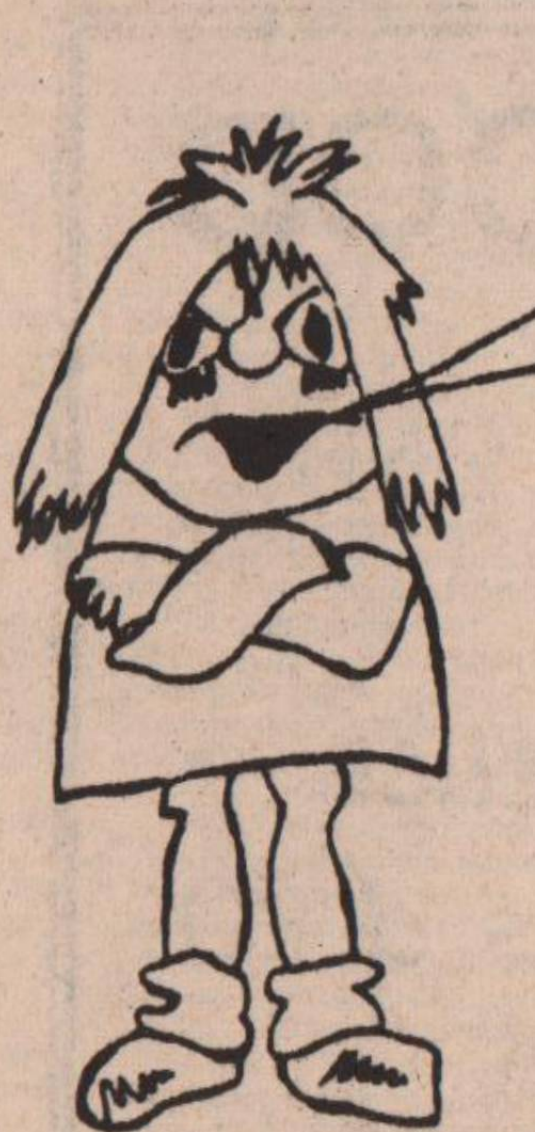
A few days ago the City Housing Committee published a report by Mr M H F Hammond, the Chief Executive and Town Clerk, under the title SNEINTON (SOUTH) AREA IMPROVEMENT STRATEGY. We have summarised the report so as to cover it as fully as possible.

In the SNEINTON SOUTH AREA, shown in this plan, the housing was shown to be basically sound and there should be no need for extensive clearance in the foreseeable future. Voluntary improvement by private owners is effectively providing modern amenities, and a satisfactory level of repair, in their houses. But some small groups of houses, mainly in the area around Hermitage Square, need to be dealt with quickly if clearance is to be avoided.



Consequently, the report calls for a Housing Action Area to be declared to effect the necessary improvements. This will be known as the Sneinton Central Housing Action Area and will be responsible for improvements in the area shown in the plan. Authority to declare the Action Area rests with Mr Michael Heseltine, Secretary of State for the Environment. We will publish his decision, in the Voice, as soon as we can.

(Further details will be published, in our next issue, to complete the contents of this report.)



SPEAK UP!!

TRICKETTS SITE

T.R.A.C.S. have been asking young people in Sneinton what they would like to see done with the buildings on Tricketts site, (as the site is being developed for them). They had lots of imaginative ideas and schemes and we intend to try and get money from the Council or the Inner City's fund so that some of their ideas can be realised.

DALE HOTEL

JOE and IRENE invite you to try their selection of

BAR SNACKS

Menu

- | | |
|----------------------------------|-------------------------------|
| Jumbo Sausage, Chips and Peas | Steak and Onion Bob |
| Cornish Pasty, Chips and Peas | Ham Salad |
| Egg, Ham and Chips | Beef Salad |
| Chicken in the Basket | Ploughman's Lunch |
| Scampi in the Basket | Pâté on Toast or French Bread |
| Curry and Rice (Chicken or Beef) | |

Toasted Sandwiches

- Cheese and Ham
- Cheese and Onion
- Cheese and Tomato

Various Baps

- Beef + Ham + Cheese and Onion
- Cheese and Tomato etc etc.

Sneinton Dale

Tel: 50759

DRAWING COMPETITION

-5-



by SANDRA MARSDEN, 10 years

The pictures were chosen by TERESA HARTE
of St. Stephen's Rd.



by JANE HAMPSON, 7 years

Next theme: A TREE

Tunes of Joy

She sat up prim in her pram her hand on her feeding bottle, and Grandma holding it to her cherry-lip mouth. What a joy to see and watch! The young and old in permanance with happiness and care in life; the real world in harmony with love. What is there better than to see hearts beating out the rhythm of happiness in the tunes of joy?

When the mind of man is wild in whim,
It always makes a fool of him.

H.B. DAVIES

J. & A. CARPETS

Tel. Nottm. 50562 (Day)

142 SNEINTON DALE
NOTTINGHAM NG2 1BR

EST. 1972

Our Buyer has gone Berserk!

VYNAL FLOORING

£1.00 Square Yard

CUSHIONFLOR

£1.75 Square Yard

BEDROOM CARPET

£1.75 Square Yard

LOUNGE QUALITY CARPET

£1.95 Square Yard

AXMINSTER CARPET

£5.99 Square Yard

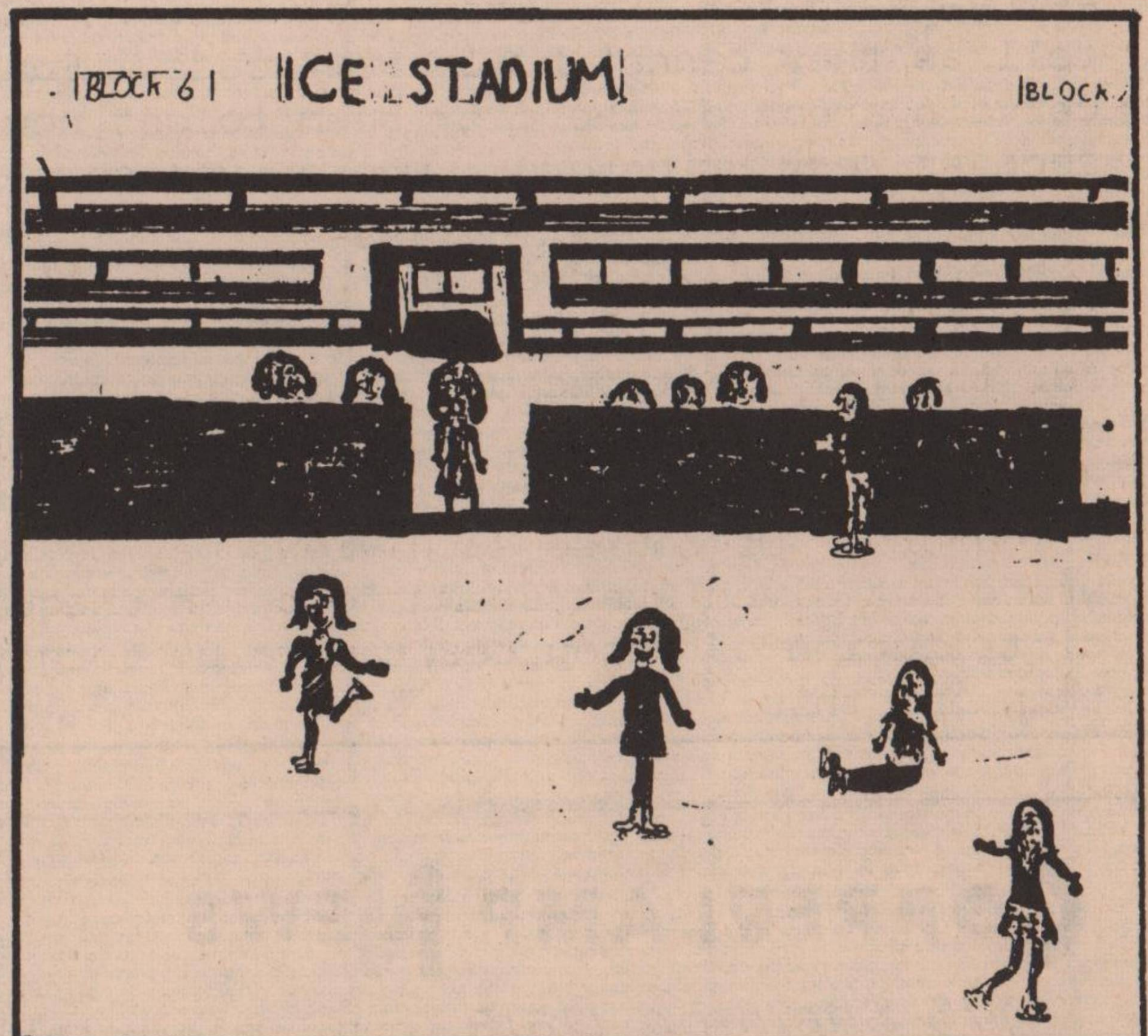
ALL PERFECTS

Expert Fitting Services Available

Free Estimates - Shop at Home Service

MUTUAL - PROGRESSIVE COMPASS PAGETT
CUSTOMERS WELCOME

FOR IMMEDIATE QUOTATION WITHOUT OBLIGATION
CALL IN OR TELEPHONE THE ABOVE NUMBERS



by JULIE NEWTON, 10 years

HAIRDRESSING FOR MEN

BRIAN W. BUSH, 115 Colwick Rd.

Men from 70p Boys from 65p
O.A.P. (Mon. to Fri.) from 45p

ALSO MEN'S TOILETRIES AT CUT PRICES!



Sneinton - ?

...continued from front page

1. Sneinton has increasing problem of thro' traffic - some of which is heavy lorries (especially Colwick Rd) and that in its view this has increased since the opening of the "prized" "Lady Bay Bridge" (the Council deny this). The result of this is environmental damage to houses and other services such as sewers, which we must remember were built 80 years ago, with the idea that the heaviest things that might pass over them were loaded drays and the occasional tram....and we pick up the bill!

2. That another consequence of the traffic situation is the high accident rates involving residents and children. Many old people have complained that they are scared of the traffic and this often confines them to their homes. The County Council itself predicts for Sneinton for 1982, that there will be

- a) 8 accidents in which somebody will be killed or injured.
- b) dozens of other incidents where moving or parked vehicles will be damaged.
- c) at least 3 school-children will be knocked down.

T.R.A.C.S. is alarmed by these predictions, especially as it is thought that they may well be an underestimate based on previous years.

3. That solving the traffic situation in Sneinton is not easy. The solution is of course to provide a "by-pass" for the area. However, the Council tell us they cannot build new roads. Funny that certain areas of the city seem to get new roads, such as West Bridgford, where even some local residents cannot see the logic of the expensive "Gamston Link". You could begin to think that it's either only the "better-off" who get things done for them, or is it because of the former junior minister for transport represents Bridgford, or do the planners themselves live and work in Bridgford? Of course such views may be totally wrong but given what seems to be an unequal distribution of resources, can we be forgiven for thinking this?

-6- Although Sneinton shows low car ownership figures, we do not wish to penalize people in our community who have to use cars; but at the same time we should discourage through-traffic from using our side roads which link Colwick Road and Sneinton Dale and are the main rat-runs.

Read on, and you'll see some feasible ideas outlined.

The people of Sneinton have been patient for long enough and should make their demands heard! The opportunity will arise when the County Council push their consultation leaflets through your letter box in the next few days (with reply slips attached). The County Council is responsible for traffic management in Sneinton. Naturally they will argue for the cheapest solutions (e.g. simple traffic signs which will be no answer).

T.R.A.C.S. too has looked into this and found that a number of ideas have already been put into practice in and around Nottingham (e.g. the Forester Street area of Netherfield, Exchange Rd. area in West Bridgford and the Minerva St. area in Bulwell). These include:

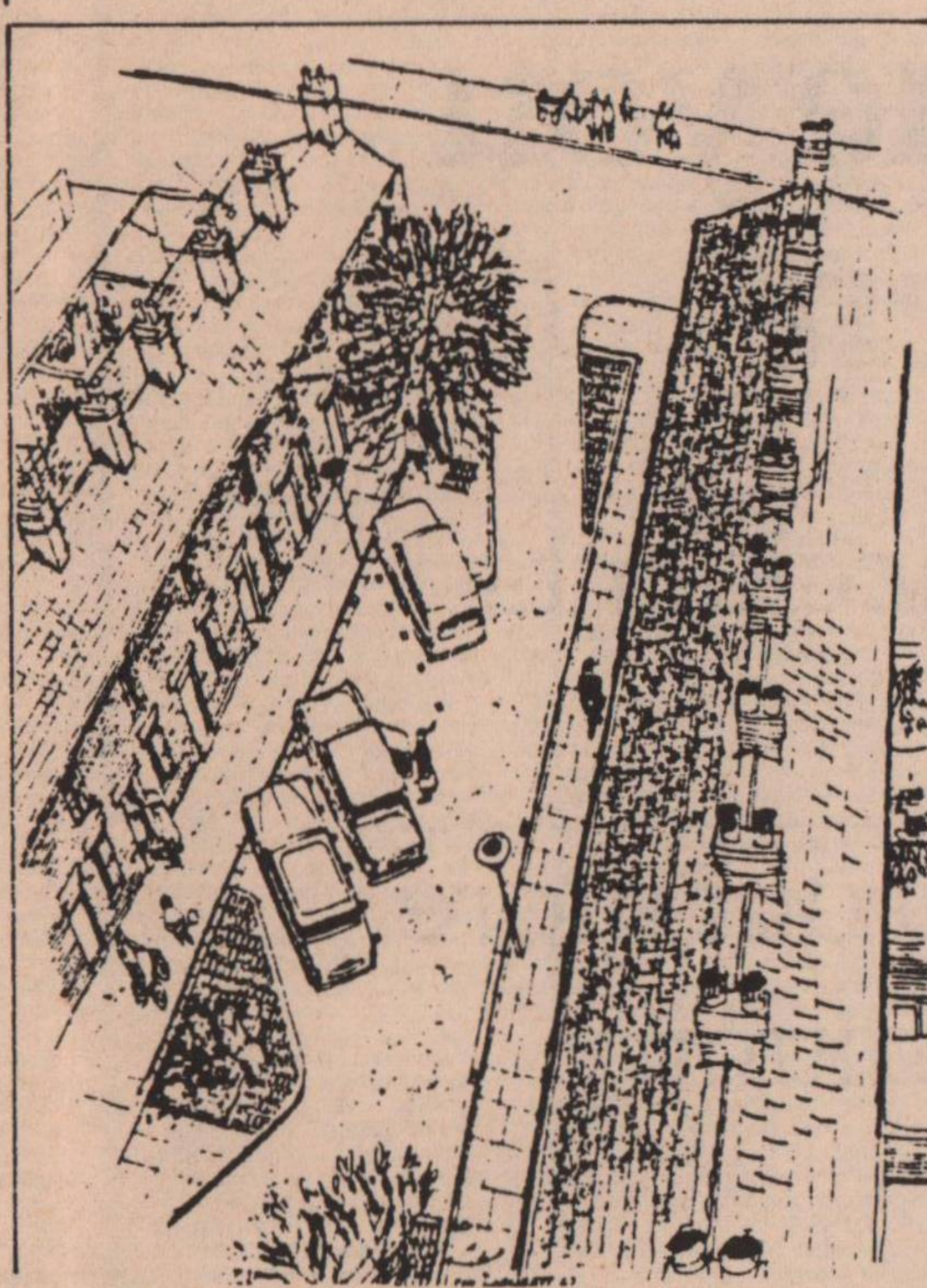


(1) Narrowing of street entrances



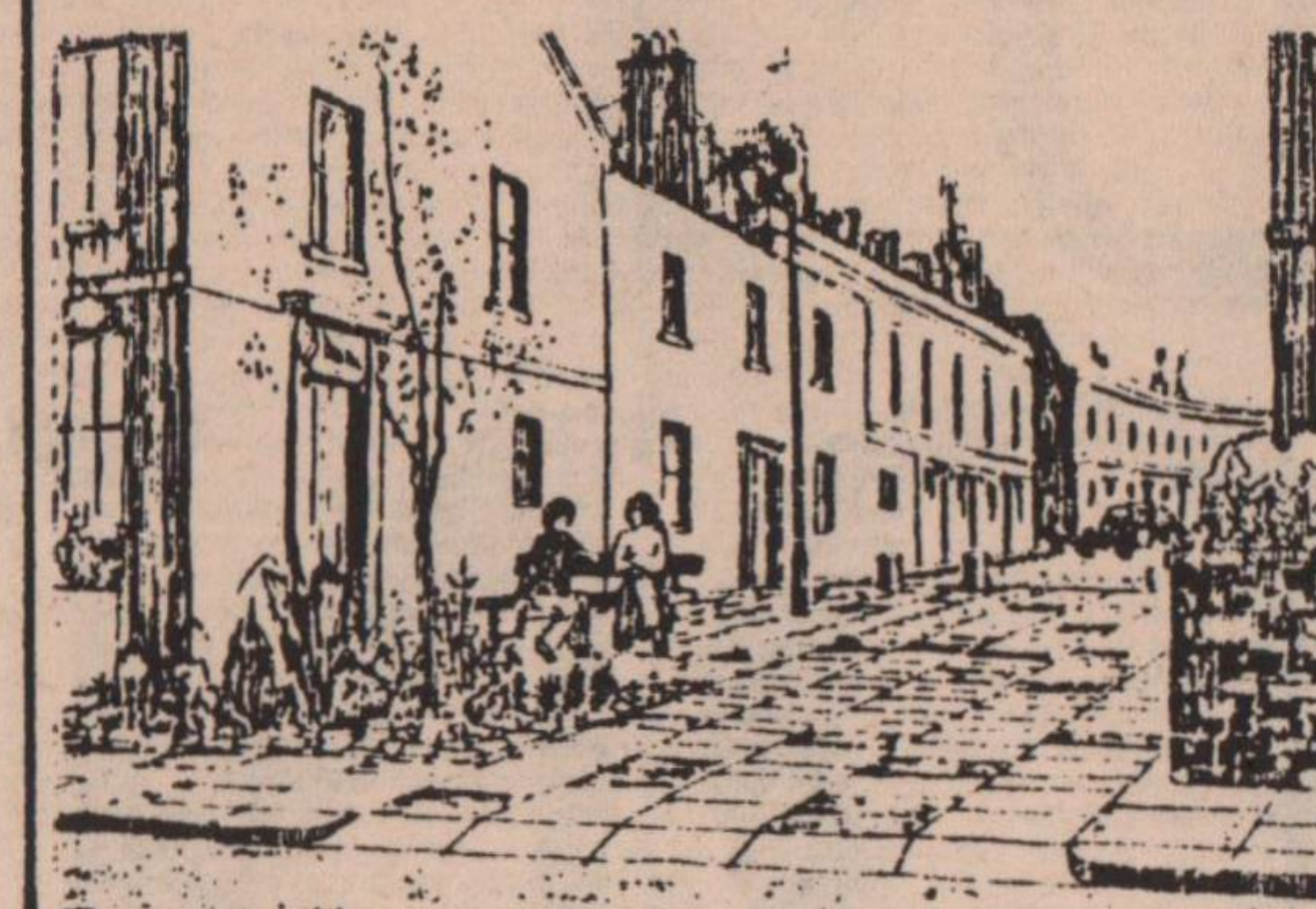
(3) Siting of trees where possible and shrub containers

(2) Access-only streets



(4) Echelon parking to suit residents

-7- (5) Placing of short walls in front of houses to give extra privacy



(6) Raised and textured road surfaces at street entrances



(7) Widening of pavements

The overall effect of these schemes is extremely attractive and greatly reduces the traffic flow in the streets where people live and nobody could argue that they are not feasible NOW. What is possible in West Bridgford must be possible in Sneinton!

We know that the money is available; if not from a single source, then from a combination of sources. For instance:

- In the Housing Action Area Programme there are £200 allocated per house for environmental improvements around the building.
 - If that is not sufficient, the City Council should be urged to use Inner City Money or other resources to ensure that the proposed schemes can be realized.
- All we need is the will of the City and the County Council to work together to meet our needs in Sneinton.

But most of all the changes depend on you!

Read the consultation leaflet carefully. If afterwards you find yourself left with more questions than answers, and are interested in our proposals, perhaps also have ideas to add, then come to our PUBLIC MEETING on April 1st, 7.30pm, at the Sneinton Hermitage Community Centre, where you can see a display, including a model, of the kind of things we'd like to see in Sneinton. Traffic and planning experts have been invited, also your local councillors.

ALL ARE WELCOME!

COPPERLAMP NEWS

175 Sneinton Dale (opp. Dale Hotel)

Papers, mags, Books, Cigs,
All Stationery, Tobacco, Cigars
Sweets, Drinks.

Toys & Games at greatly
reduced prices!!

Have your papers Delivered!!



SNEINTON PET AND GARDEN SUPPLIERS

105 Sneinton Blvd., Nottingham

WE STOCK A WIDE SELECTION OF FRESH AND FROZEN PET FOODS AT COMPETITIVE PRICES AND A WIDE VARIETY OF SEEDS, GARDENING STOCKS AND ALSO MANY PET ACCESSORIES



DAWSON'S BAKERY

149 Sneinton Dale Nottm. Tel. 590360

FOR THE FRESHEST BEST QUALITY WHITE AND WHOLEMEAL BREAD AND ROLLS MONEY CAN BUY! ALL LOAVES AVAILABLE SLICED.

ALSO RED CHEDDAR CHEESE 99p lb. OLD FASHIONED NATURAL FARMHOUSE CHEDDAR £1.40 lb / SIZE TWO £4.95 82p doz / SAUSAGE 66p lb

金禧

KAM HEI

CHINESE TAKE-AWAY AND FISH AND CHIPS MENU

72 TRENT RD., SNEINTON DALE NOTTINGHAM

TELEPHONE: 54616

Orders by telephone are welcome FREE OF V.A.T.



Monday to Wednesday 6 p.m. to Midnight

Thursday to Saturday 12 noon to 2 p.m. 6 p.m. to 12.30 a.m.

Sunday 6 p.m. to Midnight

OUT SOON

SNEINTON NEWS

**in a special issue you
will be given**

-
- Information on ways of reducing accidents in Sneinton

 - Dates and times when you can find out more about any of these at either the Community Centre or the Library

 - A reply slip so that you can let us know which you prefer (we pay the postage)

SNEINTON NEWS

WILL BE
DELIVERED TO
YOUR HOME IN MARCH



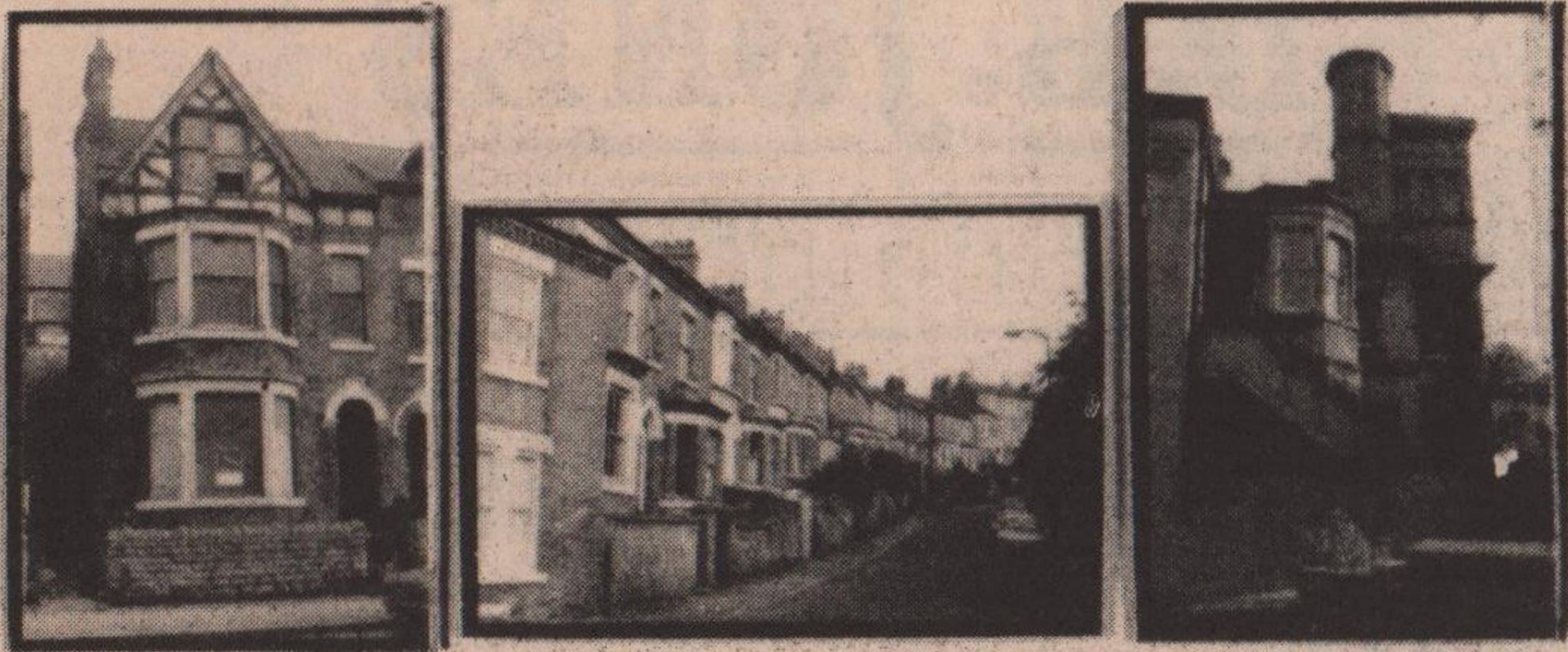
Nottinghamshire County Council

CONSERVATION

.....continued from last issue

PROPOSALS

- (a) The Conservation Area could be extended to include Lord St, Robert St, Greens Gardens, Holroyd Ave, Hermitage Square, and Victoria Avenue.
- (b) Sneinton Hollows: retaining walls on the west side, and street lighting require improvement. Wall repair may attract grants for cleaning, re-pointing etc.
- (c) Hermitage Square requires improvements. As many underground services make tree planting a problem 'planting' boxes may be introduced.
- (d) Castle Street surfacing, and Sneinton Hollows/St Stephens Rd footpath, need to be improved and are included in the highway maintenance programme. Lock up garages in Castle Street could be purchased and the site marketed for housing. The land originally occupied by 2-6 Castle Street could be securely fenced and gated and leased to the adjacent garage for off-street parking.
- (e) Lillie Terrace could be used for housing, or surface car parking, or a combination of both if the existing narrow access could be widened.



- (f) Dale St/Dale Terrace site has been partly improved, but further provision of seats, litter bins, and shrubs may be made. Between Dale St and Manor Street an avenue of trees could be planted to offset the excessive visual width of the road.



RALPH+DOREEN CHEETHAM

General Grocers

- COOKED MEATS • ALL TYPES FROZEN FOODS
- HOME MADE BREAD AND CAKES •

42 Colwick Rd

Tel. 55673

-9-

- (g) Windmill Lane/Harold St junction is at present lacking in interest; a group of trees, and perhaps shrubs, could improve its appearance. Lord St/Roberts St provide opportunities for tree planting at the junctions with Windmill Lane and at the ends of the two roads.
- (h) Sneinton Dale Service Station site being overlooked by properties in the Conservation area could benefit, by having a tree screen planted at the rear.

Finally, the Draft Policy for the Sneinton Conservation Area 1982 contains comprehensive advice for developments schemes such as alterations, conversions and extensions, and outlines suitable materials and designs, so that the character of buildings can be maintained. In addition the policy gives guidance as to the various sources from which grants for cleaning, restoration and improvements might be made.

HOW TO SPEND THE MONEY!

'THE CITY COUNCIL HAS £4MILLION A YEAR TO SPEND ON SPECIAL PROJECTS - SOME COULD BE IN THIS AREA.' --

To discuss this with the people of Sneinton the City Council organised two public meetings at the S.H.C.C.

At the first one on Feb. 10th, council officers listed numerous proposals from local people for improvements in Sneinton, from Employment, Environment, Housing, Health and Welfare to Leisure, Recreation and Community Facilities.

The second meeting on March 8th with several representatives from the City and County Council and chaired by Cllr. Dinwoodie, was well attended and lively and showed the growing concern of people in Sneinton for their community. Council proposals and local ideas were discussed and promises were made. (Sorry, because of lack of space, we cannot give you more details in this issue).

It was heartening to see so many of our council representatives in our midst, 'live' and united (City and County!) on the same platform! Many who attended the meeting wished that this could happen more often.

WHY NOT?

B.R.





YOUR COMMUNITY POLICEMAN

(continued)

I personally feel that particular attention and caring should be shown towards the elderly residents of the community by the community. With the elderly in mind particularly I offer the following advice:

1. Do not keep large amounts of money or valuables in your house or on your person when you are out.
2. Only allow people you know into your house. If any official wants to enter your house check his identification card, check that it is genuine. If you are not sure, phone the Police or ask a neighbour to phone for you.
3. Get to know your neighbours.
4. Make sure your windows and doors are secure.

A problem that is apparent within Sneinton is Communication (TALK TO US NOT ABOUT US). People are not reporting crimes, e.g. vandalism, minor thefts or suspicious circumstances. Vandalism is mainly caused by children under 15 years and as these are generally local children I am concerned that parents are not taking enough interest and responsibilities about their childrens whereabouts and actions. Remember prevention is better than cure.

I am obviously not a social worker but I do spend some of my time talking to them and their colleagues as some of the problems referred to me or which I come across really are social ones which need special handling. I also spend a great deal of time trying to foster better relations between children and the Police. For some months I was engaged with P.C. Clare in promoting a campaign for the under 11's called 'Never go with Strangers'. We have placed great emphasis on this theme and to date we have got this message over to some 3,000 school children with the wholehearted co-operation of all the schools in the area and we will consider the effort justified if it reduces the number of indecency offences against children which are attracted to the many open spaces on the Sub Division.

If you think I can help you or you can help me do not hesitate to stop me as I walk about the streets of Sneinton or you can telephone me at the Meadows Police Station; Nottingham 581721 (Not 999 - that is for emergencies only), so I can arrange a suitable time for a personal visit, either at the station or your home.



J.G.

D.B. JONES

113 Sneinton Rd.

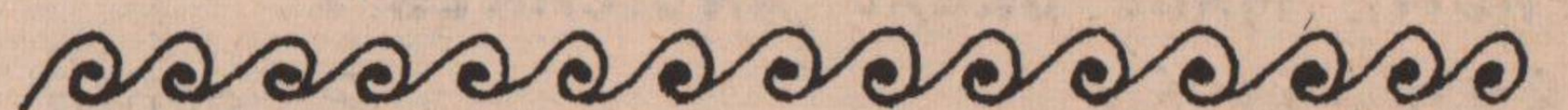
Scholls sandals now in stock

FULL RANGE AVAILABLE
AT 10% DISCOUNT

Amazing Prices for Developing
and Printing your Films:

12 PRINTS	£ 1.99
24 PRINTS	£ 2.99
36 PRINTS	£ 3.99

FULL REPRINTING AND ENLARGING
SERVICE, ALL ON KODAK PAPER.



Maggies Den

88 / 90 CARLTON ROAD, TEL: NOTTM. 53686

- FREE OFF - LICENCE
- GROCERY
- TAKE - AWAY SNACKS
- IRISH FOODS

Open 7 days:
Mo.-Sa. 8am - 9.30pm
Sun. 9.30am - 9.30pm

PROP. MARGARET MASON

How NCHA chooses Tenants

Nottingham Community Housing Association is now one of the biggest landlords in Sneinton, and several people have recently enquired about the way we select our tenants.

Many of our tenants come to us along with their houses, when we buy unimproved houses with sitting tenants. Vacant houses, however, are modernised and then let to people from our waiting list. We let houses to people solely on the basis of housing or social need. In practice, this tends to mean families with no chance of getting council accommodation in the near future (and who cannot afford to rent or buy privately).

We only let houses to people who are on our waiting list, and we only accept people on to the waiting list after an interview. We try to offer a house to people on the waiting list as soon as possible. However, different people need different sizes of houses and in different places, and we always give priority to people in the greatest need. This means that we may offer a house to someone who has not been on the waiting list long.

We are very aware of the need to be seen to be fair, and we are preparing a leaflet stating our lettings and management policies. If you think our current

-11-

lettings policy is unfair, or could be improved, please visit the office (39 Sneinton Hermitage) where you can get more information. We also give priority to single parents living in unsatisfactory accommodation.

M.McC.

OAKDALE D.I.Y. CENTRE
Ltd.

*For all your home
and garden needs*

**PLUMBING MATERIALS
AT TRADE PRICES**

90 Oakdale Rd.
Nottingham 874537

ADVERTISING RATES

£22.00	(1/2 page)	130 x 185mm
£11.50	(1/4 page)	130 x 90mm
£ 6.00	(1/8 page)	60 x 90mm
£ 3.50		30 x 90mm
£ 3.50		60 x 40mm
£ 2.50		30 x 40mm

Still the best value

in Sneinton!

Ring 54254

Furnish your Home
at a Price you
can afford
at

A.&G. BREDICE

HOME FURNISHERS

Tel (0602) 50236



165/67 Sneinton Dale

WE STOCK a LARGE SELECTION
of LOUNGE FURNITURE and
CARPETS, BEDROOM FURNITURE
and BEDDING!

- 3 PIECE SUITES from £ 189
 - COTTAGE SUITE ~~£275~~ now £225
 - COMO DRALON SUITES ~~£315~~ now £299
 - CORNER UNIT ~~£299~~ now £275
- MANY OTHER SUITES IN STOCK!

**ONE OFF
CONTINENTAL HEAD-
BOARD WITH LIGHTS
£ 90 ONLY**

- SILENT NIGHT COMBINATION
ROBE ~~£110~~ now £ 99
- CONTINENTAL QUILTS, double:
(Rec. Price £ 28.35)
Our Price £ 7.75
- single: (Rec. Price £ 15.85)
Our Price £ 6.00

ACCESS & BARCLAY WELCOME!

Sneinton Diary

SNEINTON HERMITAGE COMMUNITY CENTRE

LIST OF EVENTS

MONDAY

- * LUNCH CLUB FOR THE OVER 60's 11am-3pm -
- * KARATE 6pm-7pm
- * JUNIOR YOUTH CLUB 7pm-9pm

TUESDAY

- * COFFEE MORNING 10am-12noon
- * MUM & TODDLERS 10am-12 noon
- * BINGO 2pm-4pm
- * ENGLISH FOR ASIAN LADIES 6.30pm-8pm
- * KEEP FIT 7.30pm-9pm
- * MODERN SEQUENCE DANCING 7.30pm-10pm

WEDNESDAY

- * COFFEE MORNING 10am-12 noon
- * WHIST DRIVE 2pm-4pm
- * KEEP FIT 7pm-9pm
- * WHIST & BINGO 7pm-9pm
- * KARATE 7.15pm-9.30pm

THURSDAY

- * SENIOR YOUTH CLUB 7.15pm-9.30pm

FRIDAY

- * COFFEE MORNING 10am-12 noon
- * BINGO 7.30-9.30pm
- * KARATE 7.30pm-10pm

T.R.A.C.S. 26, Lyndhurst Road

Advice Centre:

- Tuesdays 6-7pm
- Thursdays 2-3.30pm

Meetings:

- 25th March, 7.30pm at 26 Lyndhurst Rd.
- 1st April, 7.30pm at S.H.C.C.
Public Meeting on
Traffic in Sneinton
All are welcome!
- 8th April, 7.30pm at 26 Lyndhurst Rd.
Annual General Meeting
All are welcome!

SNEINTON LIBRARY

Friday 26th March meet local police. P.C. Jock Grahame and other officers will be available between 4 and 7.30 p.m.

URGENTLY WANTED

Volunteers are needed to help with our Advice Centre. Have you an hour to spare once a week to listen to someone else's problems? No experience is needed and you wouldn't be on your own, there is always someone else there with you. If you think you can help, ring Carol on 57760 or drop a note in at the Centre at 26, Lyndhurst Road.

WORD GAME



Using the letters in this grid, how many words of four or more letters can you make. Each word must include the central letter, and each letter must be used only once in each word. No foreign words or plurals. Target: 40 words good, 50 words better, 60 words excellent.

HELP WANTED

Gentleman living in the Sneinton Dale area requires someone to do some ironing for him each week. Payment to be arranged. Tel. 583250.

SOLUTIONS TO PICTURE QUIZ

1. Wireohms (formerly Dale Cinema)
2. Millstone at George Green Memorial Park
3. Windmill, top of cap
4. Petrol station
5. Nr. 10 Castle St.

CUT COST MOTORIST CENTRES

BIG DISCOUNTS ON ALL COMPONENTS AND ACCESSORIES!

Oil Filters and Air Filters up to 70% off

- | | |
|-------------------------------------|------------------|
| COMA Oil, 1 Gallon | £ 2.48 |
| Motorcraft Spark Plugs AG22's | £ 1.74 |
| VALVOLINE Oil, 5 litres | £ 3.48 |
| LUCAS Alternators from | £ 18.50 exchange |
| Starter Motors and Dynamos from | £ 8.50 exch. |
| Fuel Pumps in Stock | |
| Mark III & IV CORTINA Camshaft Kits | £ 35.00 |
| FORD Mark III & IV CORTINA and | |
| Mark II ESCORT discpads set of 4 | £ 3.92 |
| Brake Shoes set of 4 | from £ 3.95 |

ALL PRICES SUBJECT TO 15% V.A.T.

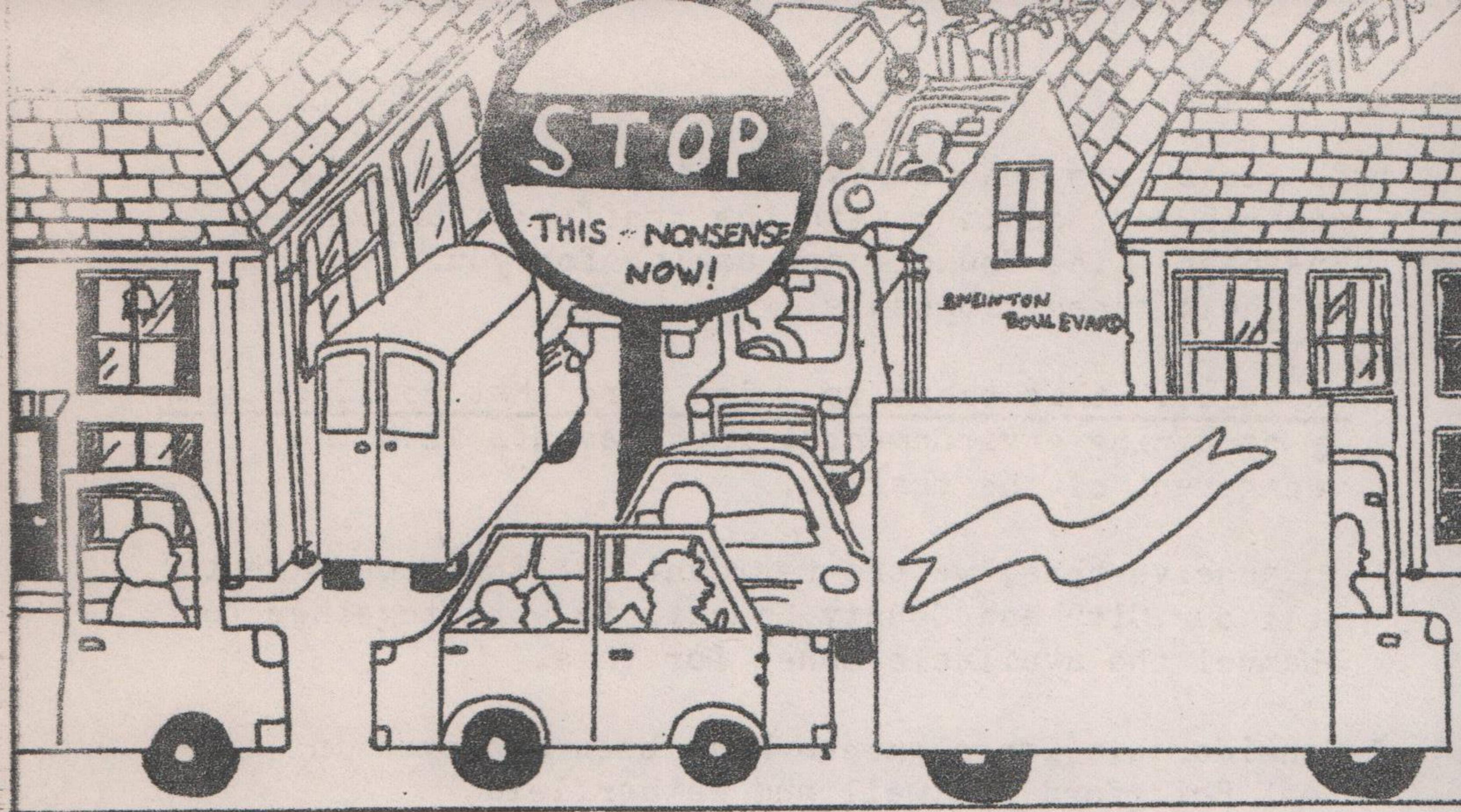
ANTIFREEZE IN STOCK / COMPONENTS AND ACCESSORIES AT BIG DISCOUNTS

Clutches, Waterpumps, Steering Wheel Cylinders etc.
Mark 3 & Mark 4 CORTINA Discs each £ 8.00

CALL IN NOW TO :

79 Colwick Rd. Nottingham, Tel. 582127
135 Portland Rd. Hucknall, Tel. 637575

OPEN 6 DAYS



You Are Invited To

A PUBLIC MEETING

To Discuss The Traffic In Sneinton

ON

THURSDAY 1st APRIL '82
7.30pm.

**AT SNEINTON HERMITAGE COMMUNITY
CENTRE**

Councillors And Council Officials Have Been Invited.

THIS MEETING HAS BEEN ARRANGED BY THE TENANTS AND RESIDENTS ASSOCIATION OF THE
COMMUNITY OF SNEINTON (T.R.A.C.S.)

- * Leaflets from the County Council are about to be distributed, dealing with the traffic situation in Sneinton. The Council are asking for your comments on their three proposals.
- * We believe that there is a lot more that could be done by combining environmental improvements with the management of the traffic.
- * To achieve this, we the residents of Sneinton have to tell our City and County Council to work together to channel the available money for this.
- * Considerable improvements have been achieved in West Bridgford, Bulwell and Netherfield

Why not in Sneinton?

- * Read the Council's leaflet

Come to the Meeting

Share your views - Listen to others

After all its you who have to put up with the appalling traffic situation!

For more information read the TRACS article in the Sneinton Voice

TRACS has been involved in

- *Tricketts
- *Housing
- *TRAFFIC
- *Welfare Rights
- *Sneinton Voice

TRACS is interested in getting things done in Sneinton

Are YOU?

If so, come along to the Annual General Meeting at 26, Lyndhurst Road Sneinton, 7.30 p.m Thursday 8th April 19