

# PROMENAIID '92

Sunday 26th January

Top comic Victoria Wood, actress Maureen Lipman, singer Annie Lennox look set to make this HIV/AIDS fund-raising extravaganza one of the most successful so far. They are among dozens of celebrities who will contribute personal items to be auctioned off as part of Leicester's Promenaid '92. Throughout the day many other celebrities will line up to take part in fund-raising activities, culminating in a spectacular two-and-a-half-hour show in the evening.

Now in its fourth year, Promenaid is the most successful Aids fund-raising initiative in the country and is also the largest outside London. The money raised will go to the David Manley Fund and other Leicestershire HIV organisations. Lass Service Development Officer, Deborah Watson said: "The event is vital to the work of organisations like ours. It ensures that there will be direct support for people living with HIV and AIDS and for their families, friends and carers.

In the afternoon in and around the theatre there will be live music, a giant tombola, craft stalls, a celebrity auction, and an opportunity for the public to meet stars of stage and screen.

There follows a spectacular two and a half hour variety show at 8pm, where celebrities feature in musical numbers, comedy and drama, and song and dance routines. Among those taking part so far confirmed are Sophie Lawrence ('Eastenders'), Lorna Dallas, Susan Penhaligon, Steve Nallon (Thatcher lookalike and voice of Spitting Image), Richard O'Brien ('Crystal Maze'), Peter Jones and Steve Coogan. Bookings are now open at £15.00, £12.50 and £10.00, ticket sales (0533) 539797.

## OUTBURST

Dear Outright,  
Re. your article on Morag and Liz - 'How We Met', how can anyone say they are in a successful relationship of eight months and live apart. A successful relationship is, first, live together. Second, it takes a few years to get a successful relationship together. Do another piece on these girls after eight years, the length of my relationship. How anyone can count sex as a hobby is a complete mystery to me. But if that's what they class as making love then just sex could be the right bond.

Yours sincerely,  
Liz Bailey,  
DJ, Dover Castle,  
Leicester.

## GREEN LANE GALLERY

Tel Derby 368652

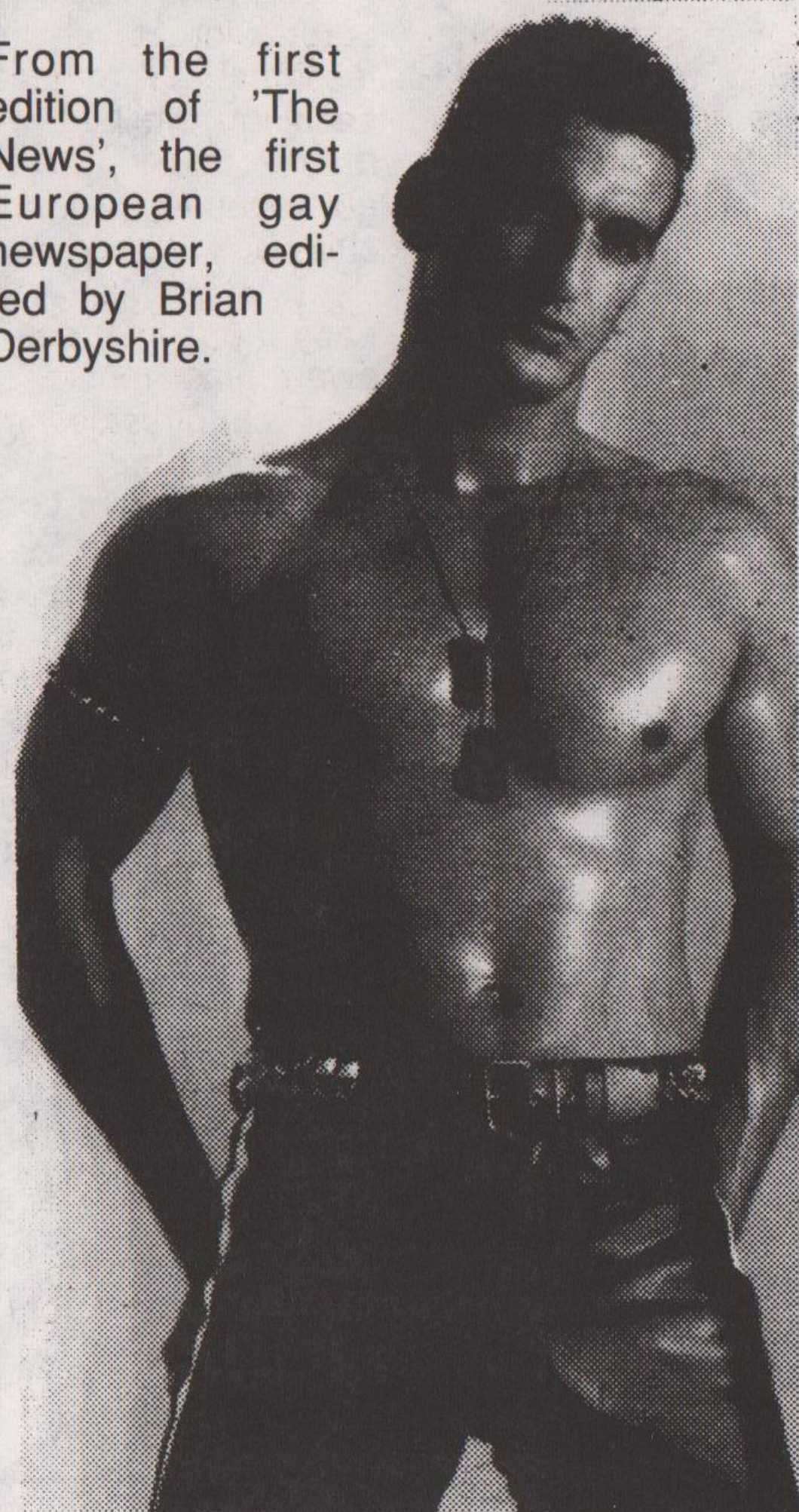
### STEVE AND TONY LOOK FORWARD TO SEEING FRIENDS OLD AND NEW IN 1992

opening hours  
Monday-Saturday, 8pm - 11pm  
Sundays 8pm - 10.30pm.  
Fridays, Saturdays and Sundays, 12-3pm

### NOW IN THE GALLERY'S 12th YEAR

GREEN LANE GALLERY,  
GREEN LANE, DERBY

From the first edition of 'The News', the first European gay newspaper, edited by Brian Derbyshire.



### FILMS AT POLY

continued from front page  
during January. Jarman's 'Sebastiane' and 'Un Chant D'Amour' are screened on 20th January, 6pm. Juliette Bashore's 'Kamikaze Hearts' and 'Je Tu il Elle' are screened on Monday, 27th January, 5.30pm. Both screenings are in the Bonington Lecture Theatre, Bonington Building, (opposite the Poly Library), Dryden St, Nottingham. Tickets on door at £1.50 per evening (wheelchair accessible). All non-students welcomed.

Issue No.21  
January 1992

# OUT RIGHT

Gay Freesheet for the East Midlands

FREE

## NEW GAY PUB FOR DERBY

If all goes according to plan, Derby should have a new gay pub before Easter, owned and run by gays. David Collins and Keith

Dakin who run the popular club, Curzons in Curzon Street, have recently signed a contract for the new pub which is within troling distance in the same street and is presently called the Refreshment House. This means that Derby will have three gay venues again.

Dave told OUTRIGHT that they were awaiting final arrangements from BASS the brewers and hoped to open in late February. But they have a problem; they need a new name and invite readers to send suggestions to them at Curzons, 25 Curzon Street, Derby (0332) 363739.



Shamsher Chohan, LASS volunteer, abseils in fancy dress in Leicester last month on World AIDS Day.

### FILMS AT POLY

Nottingham Poly Art student, Laura Smith has organised two double bills of gay and lesbian films at the Polytechnic continued on back page



Inside  
this issue...

## FRIEND REACHES OUT

Derby Friend becomes the second organisation in the East Midlands to appoint a worker for MESMAC (Men who have Sex with Men, Action in the Aommunity). David Townsend was chosen from a short list of six candidates. There were nearly thirty applications for the post from as far afield as London and the North as well as a number of local candidates. The post is funded until March 1994.

David, who comes from Nottingham, took up his post in mid-December. He brings considerable experience to the post and has previously been working in community radio in Nottingham, Derby and as a producer for LBC in London. Most recently he has been working for BBC Radio Derby on its Action Desk.

Much of his work will centre around HIV and safer sex initiatives which encompasses all matters relating to the social, physical and mental health of men who have sex with men. A key group will be young working men who have sex with men in public places and on the commercial gay scene.



David Townsend

How We Met: Lindsey & Rid p. 4  
Promenaid '92 Extravaganza p. 8



Alex Owolade, founder member of Lesbian & Gay Campaign Against Racism and Fascism (LGCARF), speaking against the Asylum Bill. Alex, who originates from Leicester, was one of 400 delegates from the Town Hall union, NALGO, meeting in Glasgow recently. The theme of this year's gathering was '1992 and Racism'. More pictures next month.



## Sarah Schulman: AIDS Crisis USA.

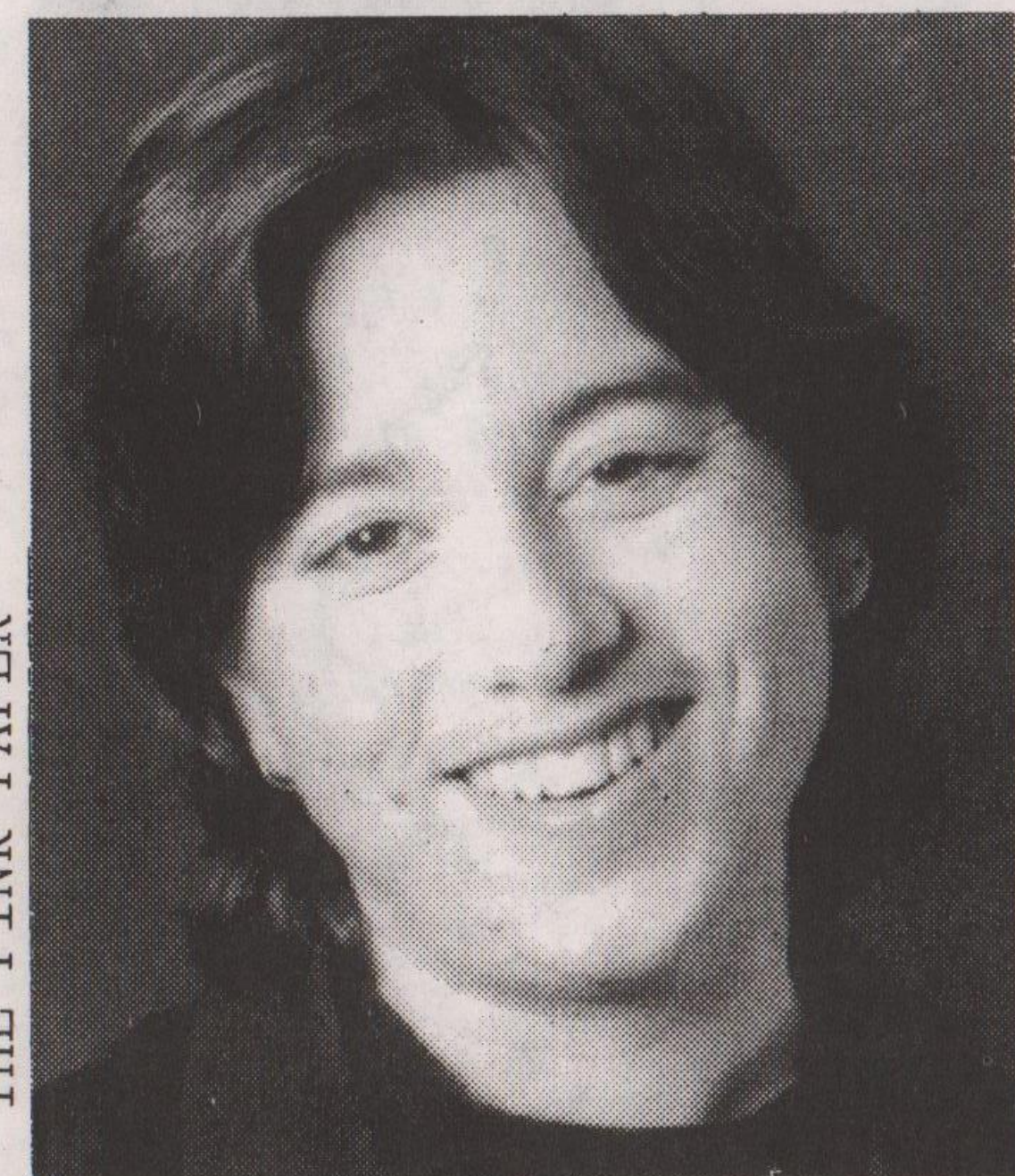
"People being activists now are heroes in my view", Sarah Schulman told a mixed audience in Nottingham last month when she spoke about the history of Act-Up (AIDS Coalition to Unleash Power) and the fight for lesbian and gay rights in the United States, writes LIZ MILLWARD. A successful writer with four novels published in the UK, her talk was inspiring, direct and full of practical advice.

Act-Up is a unique activist organisation in that the gay men - especially the childless gay men - bring to the group from their high-powered jobs elsewhere, money and decision-making, confidence and ability. It is purely a direct action/campaigning group, and is the most radical group involved in AIDS activism in the US. It has forty chapters nationwide, with 3,000 members in the New York chapter alone and an attendance at weekly meetings of 400 - an indication of the seriousness of the crisis. With so much support the group is very diverse; which means constant arguments over tactics, but allows for activism on different levels, including everything from the Ivy League planning of research agendas to leafletting, distributing condoms in schools, and setting-up of needle exchanges, while the academics create a new language and ideology for the crisis. Radical tactics are the only ones which have worked so far, however, and Sarah Schulman called for continuous resistance. "People get arrested all the time. It's best to be arrested with about 600 others, because they don't hold you for too long. If you get arrested with only 4 or 5 people you're in big trouble."

Here in the UK we can learn from the US experience if we choose to. We need to confront the real issues that the crisis has highlighted - homophobia, racism and sexism. In the US today, with 125,000 dead and 11 years of watching people dying, the government may be forced to introduce a national health service (just as we lose ours) because so many people are ill that the health care insurance companies are writing in clauses to exclude them. Women are virtually ignored anyway when it comes to health care (their status is so low). A certain type of cervical cancer is a sure symptom of AIDS, but it is not (obviously) on the official list of symptoms drawn up from studies of white gay men. Women with AIDS can therefore die without ever being officially diagnosed or given any aid such as disability allowance.

In the US the comfortably-off white middle-class gay men did not expect to be abandoned by the straight world when AIDS came along; but they were. Pointing out that straights will get AIDS too has backlashed against lesbians and gays as it has only reinforced the idea that some lives are worth more than others. The US media originally created two classes of victim - the 'guilty' gay men, IV drug users and their lovers, and the 'innocent' heterosexuals and white babies. This divide is still rampant here in the UK; Freddie Mercury's death has illustrated once again that our media is trying to enforce rigid rules about morality on the population.

continued on page four



## MUSHROOM BOOKSHOP

10, HEATHCOTE STREET  
NOTTINGHAM 0602 582506

Independent bookshop with wide stock of gay, lesbian and women's issues plus fiction, politics, inner life, poetry and much more.

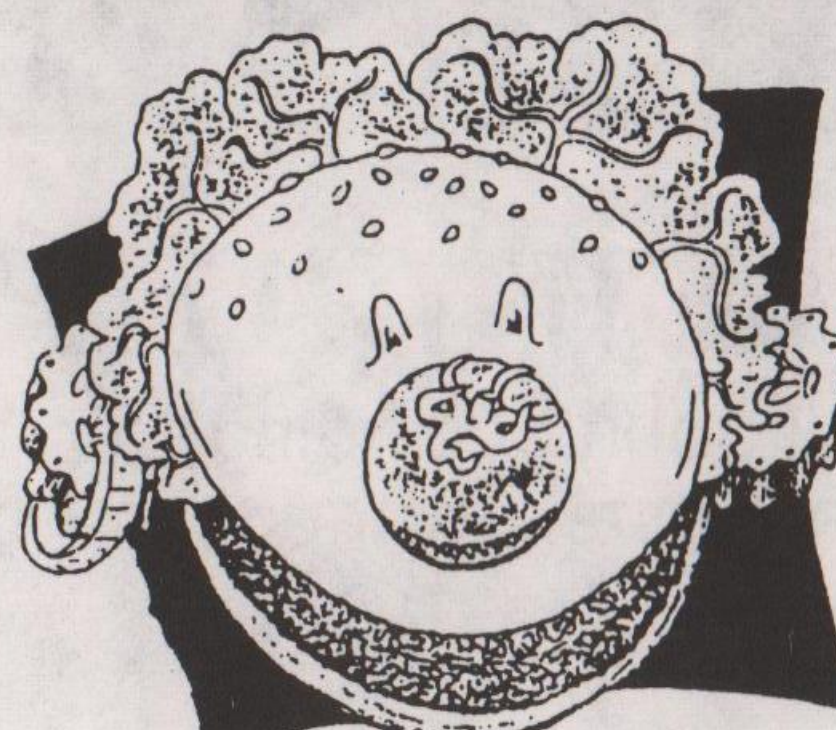
Sarah Schulman's books always available in stock including:  
'People in Trouble' - (Story of the AIDS crisis in New York),  
'Girls, Visions and Everything'.

Also available: cheap price calendars

Nottingham's Independent Bookshop  
Worker controlled since 1972

## VEGGIES

CATERING CAMPAIGN (NOTTINGHAM)



Tasty Wholesome Snacks

LUNCHTIMES AT CLINTON ST WEST

## Dance Film Dance

### Dance Film Dance

Programme One: BODY CRAZY  
Wednesday 15th January at 6.30  
Tickets £3.30/£2.50 concessions

FATIMA'S DANSE DU VENTRE  
Thomas Edison, US 1893, 2 mins  
THE DANCE  
Thomas Edison, US 1895, 1 min  
FUN IN A CHINESE LAUNDRY  
Thomas Edison, US 1894, 1 min  
A WRINGING GOOD JOKE  
Thomas Edison, US 1896, 1 min  
LITTLE TITCH AND HIS BIG BOOTS  
France 1902 3 mins

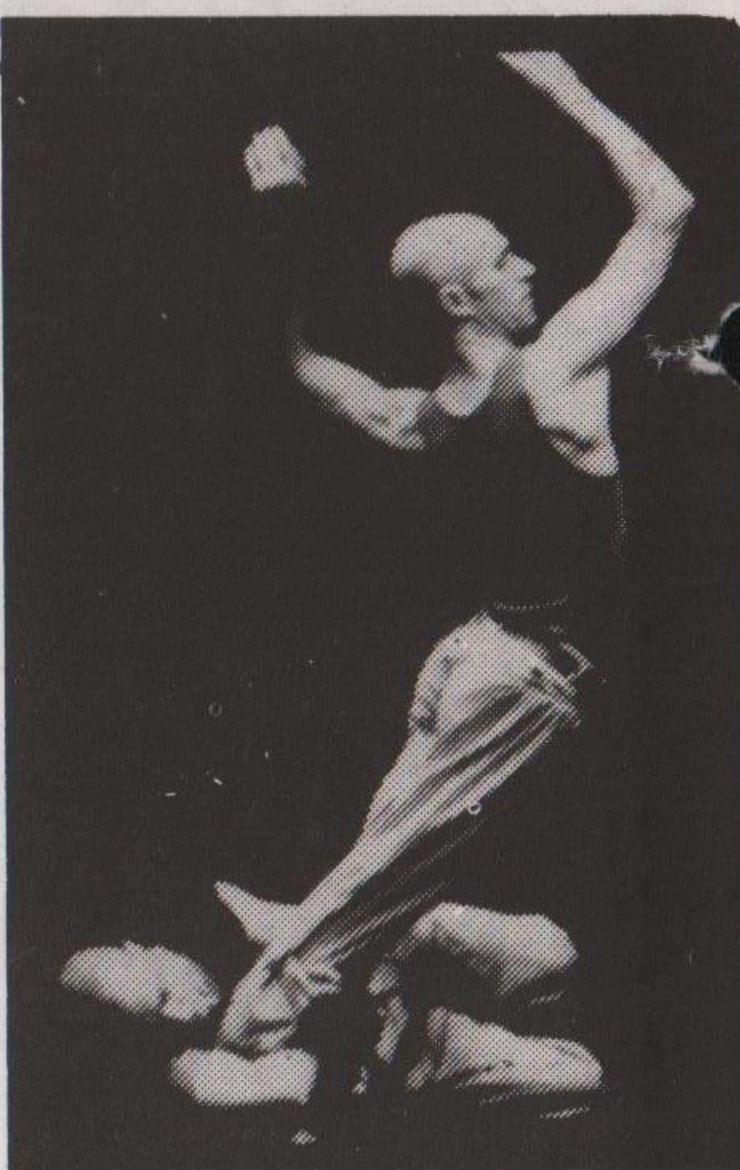
KUGELKOPF  
Mara Matushka, Austria 1985 6 mins  
LA CHAMBRE  
Bouvier/Obadia, France 1987 11 mins  
MERCY  
Abigail Child, 1989 10 mins  
FLORA FADDY FURRY  
DANCE DAY  
Richard Philpott, Britain 1990 10 mins  
TRANCE AND DANCE IN BALI  
Margaret Mead and Gregory Bateson, Bali 1937-9 20 mins



Programme Two: SLINKY TRICKS  
Wednesday 22nd January at 6.30

BALLET ADAGIO  
Norman MacLaren, Can 1971 10 mins  
THE DANCE  
David Rimmer Can 1970 5 mins  
TANGO  
Zbigniew Rubczynski, Poland 1983 10 mins  
SSS, HENRY HILLS  
US 1988 5 mins  
BRIDGES GO ROUND  
Shirley Clarke, US 1958 7 mins  
RAINBOW DANCE  
Len Lye, Britain 1936 4 mins  
COLOUR RHAPSODY  
Mary Ellen Bute, US 1954-8 6 mins  
STUDY No. 5  
Oskar Fischinger, Ger 1928 3 mins  
FEET OF SONG  
Erica Mitchell, Britain 1990 6 mins  
SNOW WHITE  
with Betty Boop  
Dave Fleisher, US 1933 7 mins

GREEN LANE : DERBY : RESERVATIONS ON 40170



Programme Three:  
CHOREOGRAPHY FOR THE CAMERA

Saturday 25th January at 2.00  
THE MELOMANIAC  
Georges Melies, France 1903 2 mins  
THE BEWITCHED TRUNK  
Georges Melies, France 1904 2 mins  
ENTR'ACTE  
Rene Clair, France 1924 21 mins  
WIND  
Joan Jonas, US 1968 6 mins  
A STUDY OF CHOREOGRAPHY FOR THE CAMERA  
Maya Deren, US 1945 3 mins  
BUFFALO ONE, BUFFALO TWO  
Colleen Sullivan, US 1985 14 mins  
NEVER AGAIN  
DV8 Physical Theatre, Britain 1990 26 mins

the METRO CINEMA

Programme Four: VIDEO DANCE  
Saturday 25th January at 3.30  
FLESH AND BLOOD  
The Cholimondeleys/Margaret Williams, Britain 1990 18 mins  
I DREAMED I WAS A LIVING DOLL  
Don Tichenor, US 1988 3 mins  
COMMITMENT - TWO PORTRAITS  
Bernar Hebert, Can 1988 12 mins  
LA DANCE DE L'EPERVIER  
Robert Cahen, France 1984 13 mins  
STAY JUST A MOMENT  
Hanno Baethe, Germany 1990 12 mins  
ECCE HOMO PROMO  
John Maybury, Britain 1986 10 mins

Programme Three plus Programme Four  
Tickets £3.50/£3.00 concessions

## HOW WE MET

"It all started when we ended up sharing a room at last year's NALGO Lesbian & Gay Conference in Preston. That was the first time we clapped eyes on each other".

It's Rid the raconteur alternately infusing the conversation with mirth and smoke rings as he unfolds a tale of unashamed romance - the stuff movies are made of.

"I believe that nothing happens by chance and that it's part of the way things are going to be. We connected very quickly".

"But I was a bit hesitant at first," admits Lindsey. "At first we teetered around each other between workshops. Rid had been to a HIV conference that day and was glad to unwind. I took myself off to Flamingos in Blackpool for a good night out, or so I thought!"

But when Lindsey returned well that was sort of, it really.

Rid reminds me that they connected very quickly. "I'm afraid we didn't make many workshops after that!" And just to make sure Rid didn't get lost, Lindsey drove him back to Bradford after the conference.

Now a year later a celebration party at Lindsey's home in Leicester marks a new chapter in their relationship when Lindsey will

shortly sell up and move to Bradford to live with Rid. Up to now fortnightly commuting has been part of the course. Their meeting/relationship happened when neither of them was particularly looking for one and, coming from different backgrounds, they both admit to feeling a bit scary as well as excited about living together at last.

Former partners of both have remained firm friends over the years. "Both my long term relationships of 12 and 17 years gave me something to cherish and I'm glad to say my love for those two people has never been wiped out and we have remained friends ever since", says Rid. Lindsey is on exceptionally good terms with his former partner, Claire.

And then there is Lindsey's son Daniel who presently spends alternate weeks with each parent on a joint custody arrangement. The move will inevitably cause Daniel some disruption, but he seems to be taking it in his stride. "He knows the score about us. Daniel took the call when Rid rang me recently and yelled: "Your significant other is on the phone Dad!" Rid will also have to get accustomed to becoming a co-parent as well.

"Though he is well-adjusted to his father's gayness, as a child of mixed descent, he is likely to encounter his share of racism and sexism when he gets older" said Lindsey "but we will have to deal with that when it comes."

Lindsey's coming out as a gay man has taken four years, since he and his wife separated. "I have had a number of short relationships since then and have socialised mainly on the gay scene."

Both of them have lived solo for several years and will have to make adjustments and are aware of some of the problems they may face. Lindsey knows that some black people are critical of his relationship with a white man. "They say that I couldn't make it with a white woman so now I try to make it with a white man. They think I want to become white and am on a path to self-destruct".

Lindsey feels honesty is so important, and Rid muses that he's not here to change anyone. He would rather celebrate other people and their differences.

But for the moment they both agree that if this is destruction then they want more and more of it.



NOTTINGHAM

aids

HELPLINE

585526

MONDAY TO THURSDAY 7-9.30pm  
CONFIDENTIAL ADVICE,  
INFORMATION AND  
SUPPORT



P.O. BOX 208  
NOTTINGHAM NG1 1NZ  
CHARITY REGISTRATION NO 702070  
ADMINISTRATION TEL: (0602)411989

## PHOENIX

| A      | R        | T   | S       |
|--------|----------|---|---------|
| Sat 11 | 2.30 pm  | BIG (PG)  | Film    |
|        | 6.15 pm  | EDWARD II (18)                                      | Film    |
|        | 8.15 pm  | PROOF plus THE INVISIBLE MAN (15)                   | Film    |
| Tue 14 | 6.15 pm  | JULIA HAS TWO LOVERS (15)                           | Film    |
|        | 8.15 pm  | THE LOVE MANUAL:<br>Short film Programme (18)       | Film    |
| Wed 15 | 6.15 pm  | THELMA AND LOUISE (15)                              | Film    |
|        | 8.45 pm  | JULIA HAS TWO LOVERS (15)                           | Film    |
| Thu 16 | 6.15 pm  | THE LOVE MANUAL:<br>Short film Programme (18)       | Film    |
|        | 8.15 pm  | THELMA AND LOUISE (15)                              | Film    |
| Fri 17 | 6.15 pm  | THE FOUNTAIN (15)                                   | Film    |
|        | 8.30 pm  | POISON (18)   | Film    |
|        | 11.15 pm | YOUNG FRANKENSTEIN (15)                             | Film    |
| Sat 18 | 2.30 pm  | ANNE OF GREEN GABLES (U)                            | Film    |
|        | 6.15 pm  | POISON (18)   | Film    |
|        | 8.15 pm  | THE FOUNTAIN (15)                                   | Film    |
| Sun 19 | 7.30 pm  | JO BRAND, HATTIE HAYRIDGE<br>and TERRI ROGERS       | Cabaret |
| Thu 23 | 8.00 pm  | MACLENNAN DANCE AND COMPANY<br>in CONTINENTAL DRIFT | Dance   |
| Fri 24 | 8.00 pm  | MACLENNAN DANCE AND COMPANY<br>in CONTINENTAL DRIFT | Dance   |
| Sat 25 | 2.30 pm  | 3 MEN AND A LITTLE LADY (PG)                        | Film    |
|        | 8.00 pm  | THE HAPPY END                                       | Jazz    |
| Sun 26 | 7.30 pm  | ANINDO CHATTERJEE: SOLO TABLA                       | Music   |
| Tue 28 | 6.15 pm  | EVERYBODY'S FINE (12)                               | Film    |
|        | 8.45 pm  | HIROSHIMA MON AMOUR (18)                            | Film    |
| Wed 29 | 6.15 pm  | HIROSHIMA MON AMOUR (18)                            | Film    |
|        | 8.15 pm  | EVERYBODY'S FINE (12)                               | Film    |
| Thu 30 | 8.00 pm  | NIGEL CHARNOCK in RESURRECTION                      | Dance   |

Box Office: 0533 554854

## CLUB RUMOURS

Rumours persist of new club openings in Nottingham. Latest application to magistrates is likely to be in Heathcote St, but other parties are also said to be interested in breaking the Bradley family monopoly.

## USE YOUR BUYING POWER



hiziki

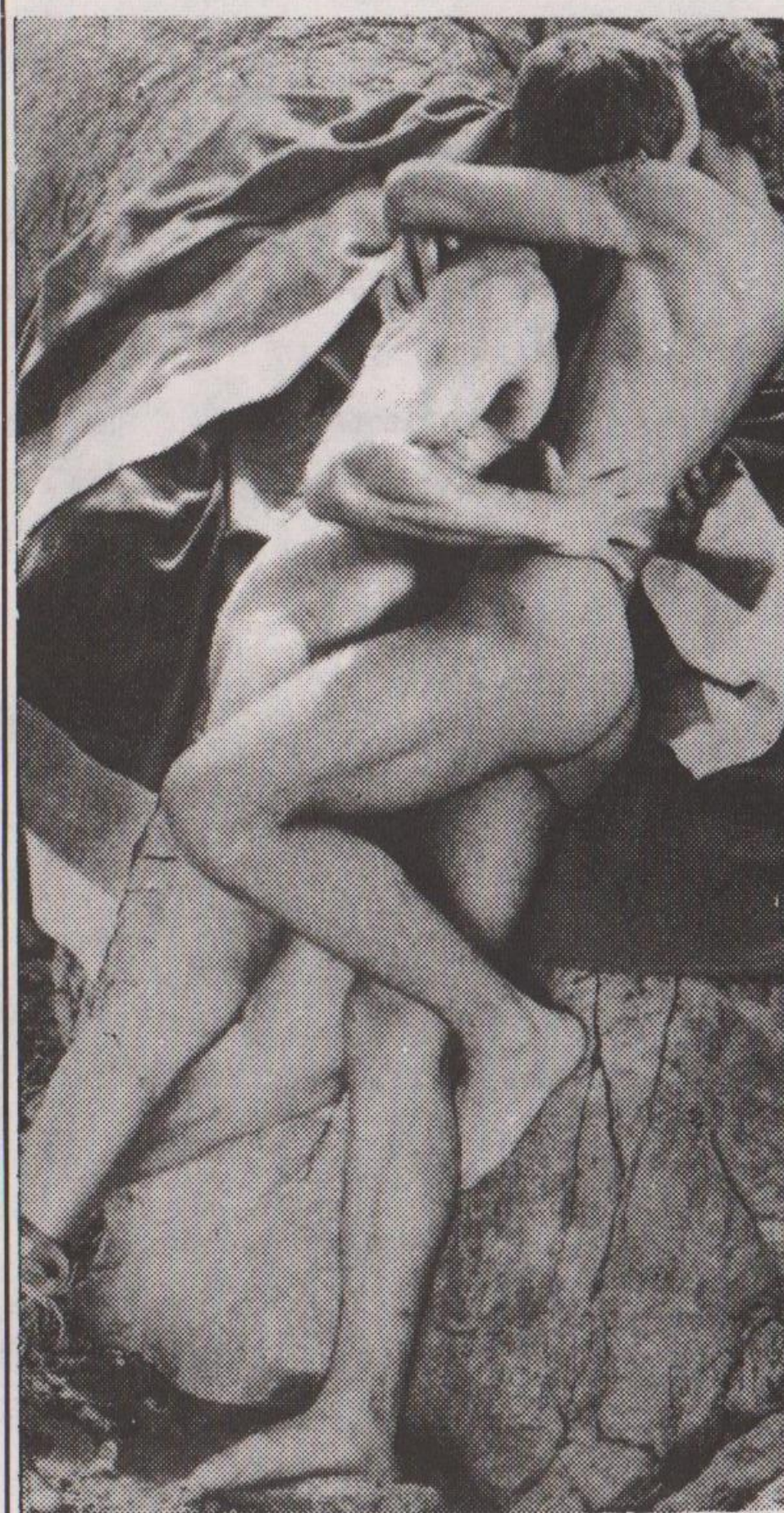
Buying from countries & companies with a commitment to social justice - Hiziki has the widest range of wholefoods, fresh bread, take away snacks, organic fruit & veg, vegetarian convenience foods, and organic wine & beer in Nottingham. We also stock many natural remedies, cruelty free toiletries & environment friendly cleaning products.  
10% Discount for UB40s, OAPs & Students on Wed/Thurs.  
Hiziki is a workers' collective.

15 GOOSEGATE, HOCKLEY

FOR POSITIVE CHANGE



'SEBASTIANE' plus  
'UN CHANT D'AMOUR'  
Monday 20th Jan. 6pm



'KAMIKAZE HEARTS'  
plus 'JE TU IL ELLE'  
Monday 27th Jan. 5.30pm



Bonington Lecture Theatre  
(Opposite Poly Library)  
Dryden St. Nottm. £1.50

## A NEW SERVICE FOR GAY MEN IN NOTTINGHAM

Informal and confidential  
counselling on a range of  
issues around HIV testing,  
safer sex and sexual well-  
being in general

- \*free condoms
- \*free KY
- \*Hepatitis B vaccination
- \*meeting place for groups
- \*videos
- \*no appointment necessary

All in comfortable informal  
surroundings at

NOTTINGHAM HEALTH  
SHOP

BROAD STREET, HOCKLEY  
NOTTINGHAM  
Drop in or ring Ashley  
on (0602) 475414

## Sarah Schulman

*continued from page two*

The morality media's hypocrisy shone through again in their reporting of the Magic Johnson case. Johnson is an athlete who has 'come out' as HIV+ and, frantically waving his heterosexual credentials, claims to have caught it through sleeping with hundreds or possibly thousands of women. While he has received sympathy for catching the virus when he was only doing what any full-blooded male would do, the women he has almost certainly infected are never mentioned. Women are, as always, portrayed as expendable carriers of infection.

Sarah Schulman has written a gripping account of the AIDS crisis in New York City, "People in Trouble" published in the UK by Sheba, £5.99 and available now at Mushroom Bookshop, Nottingham.

## OUTRAGE! BENEFIT

Celebrate the time we kicked  
ASDA's arse! From  
shopping to bopping,  
OUTRAGE! does it better!

Eight till late at The  
Yorker, Mansfield Road  
Nottingham on Friday  
24th January. £2/£1

Last month's Outrage Disco  
was postponed by the organi-  
sers as it clashed with a  
women's event which had been  
booked sometime in advance.

## The Cholmondeleys & The Featherstonehaughs in

# BIRTHDAY



PHOENIX

11 Newarke Street, Leicester O533 554854

A SPONSORSHIP  
AWARD FROM  
BARCLAYS BANK  
new stages

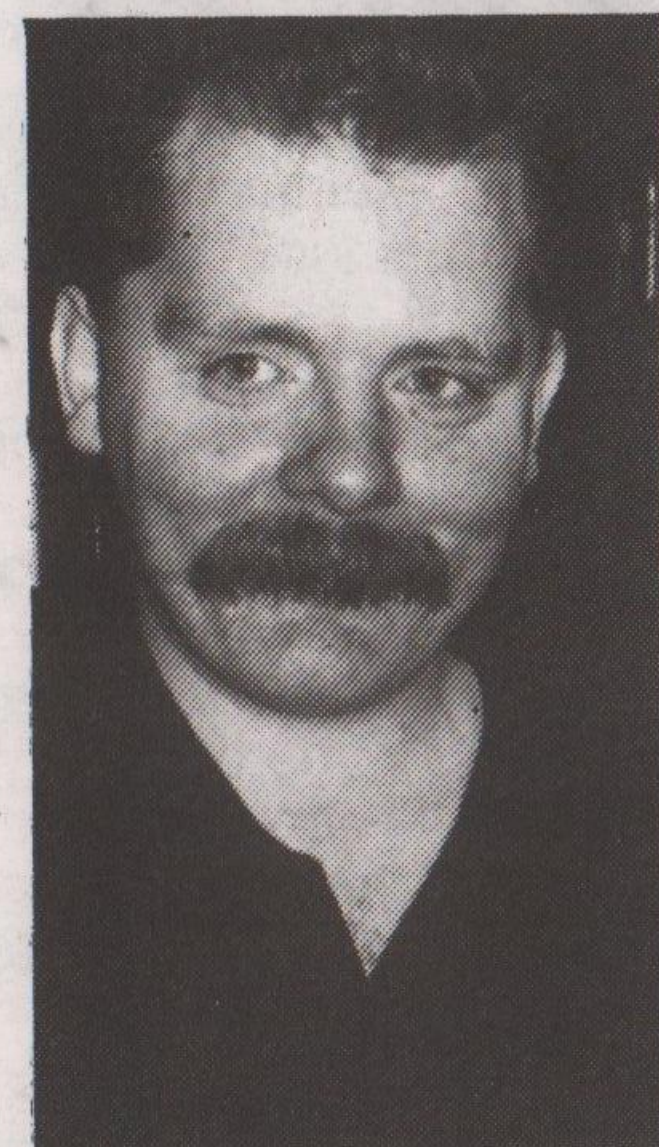
brings together the diverse elements of Lea Anderson's choreography, characterised by its intricate gesture and subtle irony and the combined forces of her two dance companies - the pugnacious all-female Cholmondeleys and their brother group, the incorrigible Featherstonehaughs. With influences ranging from movies to music hall, rock gigs to cabaret, the piece will wittily subvert audience expectations of a dance performance. The stylistic distinctions of the two companies are a mainspring of the action, the off-the-cuff individuality of The Featherstonehaughs vying with the rich and unique movement of The Cholmondeleys. The confines of performance space will also be challenged as the twelve dancers invade both stage and auditorium with a format punctuated by subliminal outbursts of song and - well, who knows what else?

Monday 3 — Friday 7 February at 7.30 pm

WORLD PREMIERE

CHOREOGRAPHY LEA ANDERSON · MUSIC STEVE BLAKE

## JUST SWEET WILLIAM



Meet William Ennis who provided a little gay relief when Dave Meadows the tenant landlord was on holiday in the summer. As head barperson at Leicester's Dover Castle he believes that any landlord of a gay pub going on holiday, will do well to ensure that the Brewery don't put in straight temporary cover. And we would agree with that. "It's one way to lose some of your old customers and not make new business as well".

## INFORMATION PLEASE

"I am a lesbian woman currently working on a project about lesbian fostering and adoption as part of a CQSW course. I would like to speak to lesbians who have become, or attempted to become, foster/adoptive carers through Nottingham Social Services. I would like information about whether your sexuality was an issue, how Social Workers reacted, whether you have had children placed with you, and if you felt able to Come Out as lesbian. I will keep any information given absolutely confidential. If you would be willing to speak to me or require more information please contact in writing, M. Maple, c/o The Women's Centre, 30 Chaucer Street, Nottingham."

## A CAMPUS SUCCESS

Nottingham's Lesbian, Bisexual and Gay Society is enjoying an unprecedented wave of popularity. The Society is the focus for lesbian, bisexual and gay life on campus. And that is likely to continue judging from the varied programme of events tabled for the Spring term. The Society is keen to stress that they welcome non-students to their gatherings.

The recipe for their success seems to be a combination of interesting subjects, from Lesbian & Gay History to discussions on S & M Sex, combined with several successful trips to discos and clubs in the region. A lesbian & gay Blind Date is also planned.

The purpose of the society is to provide a supportive atmosphere where feelings and ideas can be safely expressed, to enable members to deal with the real issues in their lives, say the organizers.

If you would like further information about the Society come along to one of the meetings or give them a ring (see the programme alongside).

## BENEFIT PROFITS

Martin Fox, Voluntary Co-ordinator, Derby Aids Liaison Unit reports a £200 profit from a benefit screening in early December at the Metro Cinema Derby. Local AIDS trusts and charities will benefit.

## BISEXUAL GROUP

Nottingham Bisexual Group now meets on the 2nd and 4th Thursday every month, 8pm, International Community Centre, 61b Mansfield Rd, Nott'm. For details send s.a.e. Box B, Hiziki, 15 Goosegate, Nott'm NG1 1FE.

## UNIVERSITY OF NOTTINGHAM LESBIAN, BISEXUAL AND GAY SOCIETY

### PROGRAMME FOR SPRING TERM 1992

All Meetings take place on Wednesdays at 7.30pm in Seminar Room D1, Block D, Cherry Tree Buildings (the block behind Midland Bank).

|          |      |   |
|----------|------|---|
| January  | 15th | What the Students' Union Can Do For Us                    |
|          | 22nd | Falling in Love, Staying in Love!                         |
|          | 29th | Question Time - Lesbian & Gay Issues in the Next Election |
| February | 5th  | Negotiating Safer Sex                                     |
|          | 12th | Bisexual Lifestyles                                       |
|          | 19th | Homosexual Acts - Drama Workshop                          |
|          | 26th | Lesbians & Gay Men in Film                                |
| March    | 4th  | Lesbian & Gay Marriages                                   |
|          | 11th | Confronting Homophobia                                    |

The following events are also planned for this term:

- a women only meeting at the Lesbian Centre in town
- lunch-time guest speakers

(time and place of both events to be confirmed later)

Saturday 15th & Sunday 16th February Lesbian & Gay Blind Date and Perversity Challenge Trivia Quiz. Further details to be announced soon.

For further information about the meetings or the Society, or anything else to do with lesbian, bisexual or gay issues on campus phone Lesbian, Bisexual and Gayline (0602) 590285 or Internal 3474 on Monday evenings between 7.30pm and 10.30pm.

NON STUDENTS WELCOME

## ALL CHANGE AT LINCOLN

Lesbians and gays in the Lincoln area have a new venue for their popular twice weekly discos. They take place on Tuesdays and Saturdays at the Harvest Moon Restaurant, Glebe Park, Wolsey Way, Lincoln. £1.50. Eight till late. (Follow A.46 Lincoln bye-pass for Lincoln North).

## RUN, RUN, RUN,

Lesbians and gays from all over the country are invited to take part in the Lincoln 5 km. fun run which takes place on April 26th, in aid of London Lighthouse. The run is open to armchair sportspeople and runners and is being organised by Lincoln man Jason Poole. Further details and sponsorship forms from Jason Poole, Lincoln Gay Group, P.O. Box 200 Lincoln, ON1 6AY.

## BROADWAY

BROAD STREET NOTTINGHAM  
BOX OFFICE 0602 412536

"THIS IS THE FUNNIEST FILM IN '91  
TERRIFIC FUN, TERRIFIC MUSIC."

PETER COX THE SUN

"ONE HELL OF A GOOD-TIME MOVIE"

IAN LYNESS DAILY EXPRESS

"ONE OF THE YEAR'S BEST, AND THE RICHEST,  
MOST ENTERTAINING BY MILES."

SHALUN USHER DAILY MAIL

"A JOYOUS, WILDLY FUNNY FILM  
YOU'LL WANT TO SEE IT AGAIN...AND AGAIN."

PAULINE McLEOD DAILY MIRROR



AN ALAN PARKER FILM  
**THE COMMITMENTS**  
20-23 JAN 6.00 & 8.30 pm

"FILM OF THE MONTH..."  
a rare pleasure...entertaining...remarkable...  
worth a fiver of anyone's money

Film Review



"Far more sexy  
than a lot of  
heavily touted  
erotic blockbusters."  
EXCELLENT



"sex, lies and videotape" mark II

The Guardian

**Julia Has Two Lovers**  
an erotic comedy about life on the line

13-16 JAN 6.00 & 8.15

**I PROOF**  
A film by JOCELYN MOORHOUSE  
24-28 JAN 6.00 & 8.15 pm  
SUN 26 JAN 8.15 pm only.



Special  
Mention  
CAMERA D'OR  
Cannes  
Film Festival  
1991

6  
AUSTRALIAN FILM  
AWARDS 1991  
including  
BEST FILM  
BEST DIRECTOR  
BEST SCREENPLAY



**ACKRO**

Women Builders and Roofers

9a, Corporation Oaks,  
St. Anns, Nottingham NG3 4JY

We are qualified tradeswomen,  
experienced in all aspects of  
general building including:

- roofing
- alterations
- extensions
- renovations
- repointing
- joinery etc

Reclaimed materials used  
where possible

Tel: (0602) 693230

## DERBY AIDSLINE

Worried/confused  
about HIV/AIDS?

For confidential advice and  
information, phone FREE on  
Derby Aidsline

0800 - 622738

Mon - Fri 7-9 pm  
Thurs 2-4 pm.

"Changing the financial sectors attitudes"

## GAY MONEY STRAIGHT ADVICE

Ivan Massow is a fully independent firm of  
MORTGAGES  
independent financial advisers which, since  
the late 1980's has specialised in helping gay  
men and women and people affected by HIV  
INVESTMENTS  
obtaining completely free advice on their  
financial situations. Our success in providing  
this pioneering service was acknowledged by  
PENSIONS  
Money Week in their 'Money Week IFAP  
awards' in which, out of 22359 advisers, we  
were amongst the five firms awarded the prize.  
LIFE ASSURANCE  
For further information speak to anyone at:

ivan massow associates

195 Wardour Street London W1 Tel 071 494 1848 Fax 071 494 1849



YOUR HOME IS AT RISK IF YOU DO NOT KEEP UP REPAYMENTS ON A MORTGAGE OR OTHER LOAN  
SECURED ON IT. MORTGAGES ARE NOT REGULATED BY THE FINANCIAL SERVICES ACT 1986 AND THE  
RULES MADE FOR THE PROTECTION OF INVESTORS OR THAT ACT WILL NOT APPLY TO THEM. IVAN  
MASSOW ASSOCIATES IS LICENSED TO OFFER ADVICE ON MORTGAGES UNDER THE 1973 CONSUMER  
CREDIT ACT. LICENCE NUMBER 29177



# OUT, ONCE MORE

In the last issue Pat Paris recalled her coming out experiences as a student on a social work course and how she found some welcome allies. In the second part of her article she looks at why she believes lesbian and gay oppression is interlinked.

In my early years as a lesbian political activist I never really thought about men's issues as being 'my' issues and ones I should be concerned about.

But the greater my involvement in the lesbian movement and subsequently working alongside gay men in various situations, I became aware of the crossover. It is not sufficient for me just to have an understanding of lesbian history in this country, that is only half the struggle. I need also to be aware of gay mens history as well.

Most of the facts and issues that affect lesbians at present are coming from people's ideas about who gay men are, because generally, negative legislation is directed at gay men, who are visible victims. We as lesbians never existed and the notions of who lesbians were, were gleaned from what they knew about gay men.

So you become aware that some of the oppression has been transferred from gay men to lesbians. I don't claim rights for myself that I don't claim for someone else. It is quite important to me that gay men are not criminalised. For whenever there is a move against gay men, the establishment is only one step behind making moves against us.

I won't have anyone saying gay men should not be allowed to foster or become parents, anymore than I would deny the right of lesbians to have these rights. We must therefore make the links; while gay men are oppressed lesbians are not free either.

Pat Paris.

## COMPETITION WINNERS

As there were only two entries for the 'Names In The News' Competition in our December issue, the Editors have decided to divide the prize money equally between T.Barker of Nottingham and M. Fox of Breaston. Congratulations you two and don't spend it all at once!

**metrocinema**  
GLENN CLOSE  
MEETING  
**VENUS**  
Friday 31st Jan - Sunday 2nd Feb

## PERSONAL ADS

More and more people are using our free personal ads as a cheap and effective way of meeting others. No expensive fees or phone calls. Box numbers provided free. It's totally confidential - all replies are forwarded unopened.

**FREE Personal Ads.** Just fill in the form. Each ad will appear in the next two consecutive issues. **OUTRIGHT** reserves the right to amend or refuse ads.

**REPLYING to Ads.** Place your reply in a stamped envelope and seal. Write the number of the box you are replying to in the top left hand corner. Place in another, larger envelope, seal and stamp, and post to: **OUTRIGHT, PO Box 4, West PDO, Nottingham, NG7 2DJ.**

## MENS PERSONAL

**NOTTINGHAM,** young gay man, hates the gay scene. Fed up with being used, seeks kind, honest, genuine friend, poss 1-1. I love blondes 21-25. Frank letter with photo if possible. Box 44.

**MIDLANDS,** genuine, emotional cancerian guy, 30, slim build, masculine, non-scene, seeks stocky built cancer, scorio or pisces guy, very masculine and discreet, 25-35 for friendship/possible 1-1 relationship. Box 45.

**FREQUENT VISITOR** to East Midlands, 40s, tall, slim, non-smoker, seeks male gay or bisexual friends 30-50. Interested in arts, massage, walking, travel/Photo appreciated. Box 46.

**EAST MIDLANDS,** 30, stocky, seeks stocky/slightly overweight guy 35-55, hairy if possible but certainly not essential for fun, but not looking for long term relationship-unless! **ALAWP.** Box 47.

**LEICESTER,** slim, blonde, athletic built guy, 20s, seeks dark, stocky guy, preferably with tache, for fun and friendship. No time wasters. **ALAWP** and phone number if possible. Box 48.

**LEICESTER/NOTTS,** well built young guy needs leather master for full training, also uniform. I need to be told! Smoker. No time wasters please. **ALAWP.** Box 49.

**LEICESTER/NOTTINGHAM,** body and soul mate sought by slim, friendly guy, 34, who enjoys music, cinema, sports, walking and fun. Box 50.

**WEST MIDLANDS,** 30, wealthy, chubby guy, non-scene, wants younger nephew type to share good life. Photo please. **ALA.** Box 61.

**LEICESTERSHIRE,** young guy, 27, straight acting, average looks and build, seeks similar guy 21-30 for friendship/relationship, possible accommodation for right guy. Box 62.

**WELL I'M BORED** with being

single and want someone to share my life with. I'm in my early 20s, live in Derby and am a student, but can travel and love socialising. Colour is no barrier, so get writing. Box 63.

**FLAT TOPS** and other short haired horny guys 21-28 sought by couple for fun, laughs and friendship. **ALAWP** and frank letter. Box 64.

**SINCERE** gentle male, small build, 5'9" with varied interests seeks warm, genuine, non-smoker, similar build, under 30 for 1-1 long term. Leics/anywhere. **ALAWP.** Box 65.

**DERBYSHIRE,** tall, dark, slim,, attractive 36 year old seeks post as houseboy or similar to guy/s 21-40, unpaid. **ALA.** Box 66.

**EASY GOING,** East Midlands guy 26, OK looks, non-smoker, enjoys music, swimming, eating out etc. Searching for guy 25+ with room for one more friend in their life. **ALA.** Box 67.

**NOTTS AREA** gay male, 31, own flat, smoker, non-scene, heavily into feet seeks same 21-35. Box 68.

**NOTTINGHAM,** 44, fit, slim, reasonable looks, seeks fun but discreet relationship. Promise same. Phone number assures prompt response. Only genuine replies please. Box 69.

**COVENTRY/MIDLANDS,** gay male couple, longstanding, both aged 30, interests theatre, cinema, driving and fun seek gay couple, male, for friendship and fun times. Photo appreciated. Box 70.

**LEICESTER/ANYWHERE,** guy 48, friendly, considerate, discreet, non-scene, non-smoker, seeks similar/younger for fun/friendship, hopefully someone special for mutual sharing/caring. Please write fully with photo. **ALA.** Box 71.

**NOTTINGHAM,** 23 years old, Asian guy, 5'8", attractive with medium build, new to the scene, looking for nice, straight acting, sincere, honest relationship. Photo please. Box 72.

**NOTTINGHAM,** gay guys 27/35, non-smokers, non-camp, slim/ attractive, leather/uniform interests. Seek genuine leather/uniform guys, military/motorcycle, police/ patrol, bikers/prison/sec, guards/postmen/store detec/army/RAF/ Navy guys for friendship/fun.Letter/ phone for quick reply. Box 73.

**SHEFFIELD** based, 47, often in East Midlands, quiet, warm hearted, seeks affectionate friendship. Box 74.

**NOTTINGHAM** biker, 42, 6', clean shaven Taurean, passive, seeks fully leathared hunky pillion for fun/friendship. Black/white 25-35 non-smoker, non-camp, Notts/ East Midlands. **ALAWP.** Box 75.

**I AM LOOKING** for a straight acting, perhaps bisexual man. Someone that bit different. I'm not keen on clubs, loud music, or scene queens. I'm 21, looking for poss 1-1. Box 76.

**NICE LOOKING,** caring, big brother, 40s, 5'7", comfortable lifestyle, seeking a genuine and cute, younger brother, 20s to love and cherish. Weekend holidays etc. Must be slim. Photo appreciated. Box 77.

**NOTTINGHAM,** 40, stocky,

short hair, bearded, seeks special guy to translate SM fantasy from magazines to reality or memory. **ALAWP.** Box 78.

**LEICESTER,** sincere, loving, white post-graduate student, 26, brown hair, blue/grey eyes, seeks Asian male to develop caring relationship. Interests, films, theatre, music, vegetarian meals and quiet nights in. Box 79.

**LEICESTER,** student, 20, seeks non-camp male 19-22 for friendship. Easy going, caring and fun. Strong personality. Interests cinema, theatre, music, talking. You slim build, blond hair, blue eyes, non-scene. Box 81.

**DERBY,** 31, fit, intelligent, seeks new friends 25-35. Interests theatre, cinema, cooking, reading. Photo appreciated. There must be someone out there! Box 82.

**NOTTINGHAM,** leather guy, slim 37, seeks new recruit to join local stable. Appropriate letter, photo and CV guarantees reply. Serious enthusiasts please. Total discretion assured. Box 83.

**NOTTS,** 23, pierced male seeks sugar daddy for long winter evenings. Possible relationship. Hirsute preferred. **ALA.** Photo would be nice. Box 84.

**BARBIE** needs Sindy but wears Ken. May be you could be the lucky winner of the heart of Barbie or sorry mean Sindy blow up's more desirable. Unless any better. Box 85.

**NOTTINGHAM,** gay male 22 seeks male for honest friendship leading to 1-1 for right man. No time wasters. Photo appreciated. Box 86.

**LEICESTER/EAST MIDLANDS,** Asian graduate, 30, 5'8", slim athletic build, tache, hirsute, non-scene, straight acting, seeks intelligent young male to spend evenings together and possibly build a relationship. **ALA** with photo. Box 87.

**EAST MIDLANDS,** 30, stocky, hirsute, dark, tashed, 5'6", Prince Albert nipples, leather, denim tastes seeks similar clone leather guys for red, black, grey, yellow play room fun. **ALA.** Accommodate, travel. Box 88.

**NOTTS,** 31, slim, attractive seeks similar. Non-scene, maturity, personality important, and good looks. Age 26+. **ALAWP.** Phone number for quick reply. Box 89.

**ATTRACTIVE** tached 34, 5'10", slim enjoys snogging, denim, light leather interests, non-smoker, seeks similar tached or not. Ultimately seeking 1-1. Shorter guys especially welcome (not essential). **ALAWPA.** Yorkshire. Box 90.

**LEICESTERSHIRE,** 26, non-smoker, clean shaven, attractive and in pretty good shape. Seeks similar for friendship. Photo please. Box 101.

**LEICESTER/MIDLANDS,** friendly sincere gay guy, 32, seeks decent friends to share life with. I am crazy about Abba and also love videos and music in general. Please reply. **ALA.** Box 102.

**NOTTINGHAM,** middle aged but fit.Into keep fit, aerobics, circuit training, weights. Seeks mate to train and socialise with. I am very discreet-you too. Only

genuine sporty types please. Box 103.

**DAVID** from Leicester, 46, seeks loving guy 21-46 for warmth and fun on cold winter evenings, and laughter and love on long summer days. Box 104.

**LEICESTER/ANYWHERE,** mid 40s, stocky, self assured, fun loving male seeks professional younger male for friendship, possible 1-1. Interests include cinema, swimming. Photo with letter ensures replies. Genuine ad: are you? Box 105.

**NOTTINGHAM,** youthful 50 years old, good looking biker seeks mates for sincere but casual day time fun. Non-scene, non-camp. I am single, horny and masculine. Box 106.

**EAST MIDLANDS,** gay male, 38, warm, affectionate, 6'2" seeks genuine person for sincere relationship 25-40. Interests, travel, cinema, arts. Box 107.

**EAST MIDLANDS,** 24, slim, attractive. Interests include cinema, music, gigs, occasional nights clubbing, keeping fit, making friends. Dislikes prejudice, seeks romance, friendship, similar aged bloke. Photo and detailed letter please. Box 108.

**NOTTINGHAM,** black lad, 23, attractive with fit, athletic body, straight acting with good personality, seeks young guy for friendship/relationship. **ALA.** Box 109.

**ATTRACTIVE** bisexual guy, mid 40s with a lot of love to offer, wishes to meet cute, slim young guy, 20s, to take care of. Waiting for your reply. **ALA** Photo. Box 110.

**LEICESTER,** gay guy, 40, seeks black, Asian, others under 35 for caring relationship. Interests swimming, walking, videos. **ALAWP.** Accommodation available. Box 111.

**DERBY/MIDLANDS,** caring guy, mid 30s, clean shaven, seeks sincere guys 21-35 for fun and friendship, maybe more. Can travel and accommodate. **ALA.** Photo/ phone number if possible. Box 112.

**NOTTS/ANYWHERE,** male 32, 5'10", dark hair, good looking, slim, enjoys clubs, cinema, a drink, seeks guy 21-30 with similar interests who is active for 1-1 relationship. Photo please. Box 113.

**MALE,** 44, tall, medium heavy build, easy going, sincere, own flat Leicester, varied interests. Would like to meet others for friendship. Age, looks not important. Will travel. **ALA** promise. Box 114.

**LEICESTER/ANYWHERE,** gay male 28, straight acting/looking, great personality and sense of humour, seeks guys 21-30 for friendship and fun (possible 1-1). Your photo with letter ensures reply. **ALA.** Box 115.

**LEICESTER,** guy, 20s, looking for sincere and genuine friends. I am interested in music, reading and videos. Please write so we can meet. Give me a phone number if possible. Box 116.

**LEICESTER,** young gay couple (1 Asian, 1 white), seek other guys for raunchy fun, friendship and nights altogether. Must be slim, 20s or 30s, preferably non-smokers. Raunchy letter and photo

guarantees reply. Box 117.

**NOTTINGHAM/ANYWHERE,** active, sociable guy into theatre, music, literature, walking, travel, the gay community and a good time (whew! and some quiet nights in), tall, forties, seeks new friends (21-45)-maybe someone special. **ALA.** Box 118.

## MIXED PERSONAL

**DERBY MALE,** 33, seeks bisexual female for safe fun and friendship of any colour. Age from 18-65. Photo appreciated if possible. **ALA.** No time wasters please. Box 80.

## WOMENS PERSONAL

**NOTTINGHAM** lesbian, 20, seeks friend/relationship for social activities and sport, or just training partner. Only serious replies please! Box 56.

**EASYGOING,** funloving female, 28, open and sincere, enjoys dancing, cooking, travelling, good times. Wishes to meet similar women for friendship/relationship. Also likes receiving letters (and replying) from friendly people! Box 57.

**I'M NOT IN LOVE,** but open to persuasion. Lively, outgoing, professional, 33, romantic and caring, seeking similar woman. Enjoy theatre, music, pubs and fun. Lets get together for friendship/relationship. Box 58.

**EAST MIDLANDS,** lesbian, early 20s, into self development, awareness, music, dancing, walking, countryside, health, seeks similar for honest, caring, friendship/relationship. Location and age unimportant. Box 59.

**DERBYSHIRE** lesbian, 30, loving, caring, seeks friendship/relationship. Any age. Box 60.

**NON-SCENE** lesbian couple (one sporty, one homely) seek similar for fun. Social activities include nights in, nights out, some sport? Nottingham area. Age 20-35. **ALA.** Box 91.

**LEICESTER** girl 29 seeks oth-

ers interested in sport, particularly squash, for friendship and social. Box 92.

**LEICESTERSHIRE,** early 40s, female, loving, caring, sincere, genuine, wishes to meet feminine caring person for friendship, relationship. Box 93.

**DERBY,** slim, attractive, sociable lesbian student seeks similar, maybe somebody special 18-24. Photo appreciated. Box 94.

## ANNOUNCEMENT

Ashbourne: gay, lesbian, bisexual? Interested in a new social group? Box 119

## ACCOMODATION

A new free service. Advertise your accommodation wanted/ offered in **OUTRIGHT**, using the personal ad form. Include your address or phone number for quick replies or let us provide a box number free. Your ad will appear once, in the next edition.

Nottingham Gay Switchboard, Leicester Lesbian and Gayline and Derby Friend also operate accomodation files: see the helpline panel for phone numbers and operating hours.

**LUTTERWORTH,** double size room available in quiet private home, good access to Leicester, Coventry etc. Box 120.

## OUTRIGHT

is published monthly by:  
**Naff Co-operative Ltd.**  
PO Box 4, West PDO,  
Nottingham, NG7 2DJ.  
For advertising and news copy, phone Edward on 0602-780124.  
Copy date: No. 22: 1st Feb.  
No. 23: 29th Feb.

## FREE PERSONAL AD!

Just complete and clip the form and send to:  
**OUTRIGHT, PO Box 4, West PDO, Nottingham, NG7 2DJ.**

|  |  |  |
|--|--|--|
|  |  |  |
|  |  |  |
|  |  |  |
|  |  |  |
|  |  |  |
|  |  |  |
|  |  |  |
|  |  |  |
|  |  |  |
|  |  |  |

Name.....  
Address.....  
..... Post code.....