

THE LIGHT RAPID TRANSIT SYSTEM

The promotion of public transport as a greener alternative to the car is beginning to gain ground in many British cities, and it is LRT (Light Rapid Transit) that is being heralded as the way forward for the 90's.

If funding for the £68 Million Nottingham LRT project is found, then a route from the City Centre out to Hucknall will be constructed before the end of the decade, complementing the route of the Robin Hood rail line.

The LRT route should provide fast and convenient access to the city centre for those living near the route, or accessible to 'feeder buses', and also for car users making use of Park and Ride sites.

It is hoped that a Network of LRT routes will eventually be constructed, providing similar benefits to other areas of Greater Nottingham.

The Light Rail Vehicle (LRV) runs on electricity collected from overhead wires, and therefore does not produce large quantities of exhaust gases - a single LRV produces 1,000 times less carbon monoxide and hydrocarbons than the average car.

The construction of such a major infrastructural scheme is bound to cause some short term environmental disadvantages, but these should be outweighed by the long term benefits of less air and noise pollution, and of having access to a comfortable and efficient public transport system.

Simon H Johnson.

The Greater Nottingham Light Rapid Transit System is jointly sponsored by Notts County Council with Nottingham City Council and Nottingham Development Enterprise.

CYCLING AND ITS BENEFITS

As environmental consciousness continues to grow, the benefits of cycling as a serious means of transport are becoming increasingly recognised.

In the Nottingham Area the local cycling campaign group Pedals has been promoting cycling since 1979, and it is gratifying to see a much greater interest in the bike.

The dangers to health and our environment from motor traffic are now widely appreciated. The Cyclists' Touring Club has calculated that a 20% switch of non-walking trips to cycling would reduce vehicle exhaust emissions by 30,000 tonnes of Nitrogen Oxides and 4.5 million tonnes of Carbon Dioxide.

A recent report from the British Medical Association argued that the potential benefits of getting more people to use bikes regularly would far exceed, in terms of 'life years added', the adverse factors of accidents.

Most trips in urban areas are short and for practical purposes, for which the bike is often very appropriate, especially when it comes to beating rush hour jams. On most trips it actually rains much less often than non-cyclists assume, and only rarely do you get a real soaking!

A great deal remains to be done to make cycling really safe and attractive, but Pedals intends to continue to make the most of these many potential benefits!

For information about Pedals, contact Hugh McClintock on 816206

The latest Greater Nottingham Cycle Route Network map (published by Nottinghamshire County Council) is now available from local libraries.

STOP THE ORBITAL PROPOSAL

continued

The Chairperson of Nottinghamshire County Council's Environment Committee - Mr Terry Butler - was asked to comment on the Orbital Road Proposal. This is the comment given:

'The current plan is to safeguard the route of the proposed road while public transport is further promoted.'

The County Council is doing everything possible to promote public transport with limited resources, but further government support is needed. If there is enough take-up of public transport opportunities, the road will not be needed in the foreseeable future.'

TRANSPORT CONTACTS

- **Transport 2,000**
- John Abbiss, 418418 ext 2608 (daytime) or 235714 (evenings).
- **Friends of the Earth Transport Group**
- Tim Gray, 431145.
- **Environmental Transport Association (ETA)**
(National group campaigning for integrated transport policies, and providing a roadside rescue service for drivers) - Phone 0932 828882.
- **Pedals**
- Hugh McClintock, 816206.
- **STOP**
- Ian Grimwood, 874406.
- **Freewheelers (National group for car-sharing on long journeys)**
- Phone 071 738 6861.
- **Cyclists' Touring Club (CTC)**
(National campaigning and support group)
- Phone 0483 417 217.

ALTERNATIVES TO THE CAR

With the Government forecasting a doubling of traffic over the next thirty years, this seems an appropriate time to consider methods of reducing the impact of the car, and considering alternatives.

Simple measures such as cleaner and more fuel efficient vehicles could help to cut pollution levels. However if the number of cars increases as expected, the amount of waste gas produced and energy consumed would still increase.

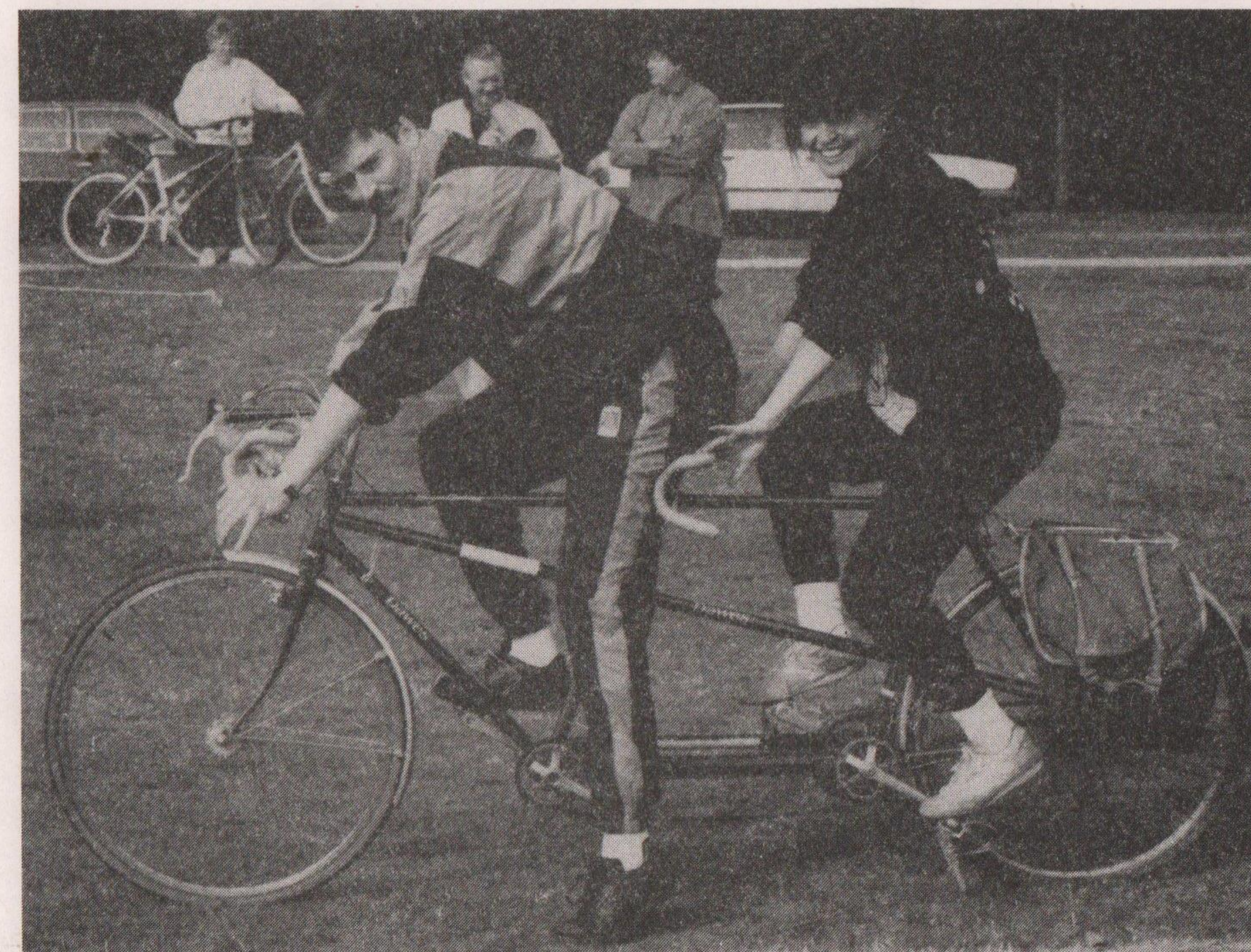
The number of vehicles on the road could be reduced by making fuel more expensive and charging for road usage. Such changes would have to be accompanied by more public transport and a more viable rail network for goods. Public transport can provide much cleaner forms of travel than the car - for example, rail travel produces half as much Carbon Dioxide per passenger as car travel.

In Nottinghamshire the County Council Transport Policies and programme for 1994-95 includes a larger section than last year on public transport. However, the budgets for 1994-99 include £131 Million for spending on roads, with only £20.9 Million for public transport.

Jason Cozens,
Nottingham Friends of the Earth.

GREEN NETWORK NEWS

VELO-CITY CONFERENCE



Participants in the Velo-City Sponsored Cycle and discussion of experience in other European countries tended to highlight this problem.

The discussions on the respective roles of the bike and public transport were particularly useful. The majority seemed to agree on the need for comprehensive policies to integrate the bicycle with public transport, maximising their ability to provide a viable alternative to the car.

Better provision for carrying bikes on trains and trams is one important component of integration. Plans for privatisation in the UK make the prospect of achieving this here that much harder, a stark contrast with cities like Berlin or Basle, where such integration is becoming much stronger.

A German speaker, Werner Brög, stressed in a plenary session that politicians in several different countries he has studied tend to greatly underestimate growing public support for policies to change transport priorities and restrict the role of the car.

continued on page 2

Green Network News is a monthly publication aiming to share information and build links between all individuals and organisations in the Nottingham and South Notts area with an interest in the environment.

No. 22 October 1993

Inside...

- ☐ Transport Focus
- ☐ Re-using Resources
- ☐ Green Nappies!

HELP NEEDED

Volunteers from rural communities in parts of Broxtowe, Gedling and Rushcliffe are needed to plant Autumn bulbs during October. You could help to improve your local environment with displays of bluebells, snowdrops and daffodils.

For more information, contact Carolyn Finnie of The Greater Nottingham Groundwork Trust on 799227.

VILLAGE ENVIRONMENT COURSE

A 6 week course covering environmental and conservation topics is now available for villages. The group taking part in the course chooses from a selection of topics at the first meeting.

Contact Pat Glaister of Notts Rural Community Council on 0636 815267

GUIDED WALKS

A leaflet describing a range of guided walks is now available from Notts County Council. The walks range from 1 mile to 12 miles in length, and most of the walks are free.

To order a copy of the leaflet, phone 774424

GREEN OFFICE CATALOGUE

Green Office (formerly the Green Business Company) has recently launched a new catalogue of Environmentally Friendly and Non-Toxic products. Green Office will deliver products from the catalogue to local offices.

As almost half of the UK working population is employed in offices, they can make a major contribution towards reducing environmental damage. A green office purchasing policy could include buying recycled paper, re-usable products (such as re-inked printer ribbons), and long life products (such as long-life light-bulbs).

For more information, contact Green Office on 497458.

GREEN FESTIVAL SUCCESS

This year's Green Festival (held on September 5th) was a great success - the site on Victoria Embankment was filled with crowds of people keen to find out more about the environmental scene in Nottingham.

The sponsored Velo-City Charity Cycle Ride started and finished at the site, helping to raise money for Notts Wildlife Trust and CRISIS.

The organisers of the Green Festival are considering expanding next year's event, perhaps to go on into the evening.



People enjoying the Nottingham Green Festival

VELO-CITY CONFERENCE

(continued)

At the same time it is clear that a wide range of environmental and health organisations, official and unofficial, are very seriously concerned at the unsustainability of many current transport policies. Bicycle promoters and planners need to respond by forming closer alliances with these bodies, to encourage positive policy changes.

One particularly encouraging lesson from the Conference is that it is possible to reduce bicycle theft, recognised in many countries as an increasingly serious deterrent to cycle use. Speakers from Denmark and the Netherlands

reported on very encouraging attempts to tackle this with computer registers, and Nottingham City Council chose the eve of the Conference to unveil its new City Centre cycle lockers in Trinity Square car park.

The County Council were clearly very pleased with the success of the conference, which concluded with the announcement of their 10-point action plan to further encourage cycling. Pedals will be maintaining our vigilance to make these a reality!

Hugh McClintock (Pedals).

NOTTS TRANSPORT CAMPAIGN GROUP

This group has recently been set up by the Campaign for the Protection of Rural England (CPRE) and several other organisations.

The group is planning to study and comment on the current major road proposals affecting Nottinghamshire.

For more information, contact:

Carol Collins (CPRE) on 0949 81798.

WRITE OFF NUCLEAR POWER!

The government is planning to conduct a review to decide whether any new nuclear power stations should be built.

Friends of the Earth is responding by compiling a nationwide petition to try and write off nuclear power. The petition must be completed by 23rd October.

Contact Nigel Lee on 788059.

Nottingham Friends of the Earth.

CRUELTY FREE COMPANIONS

This organisation has recently been established to help people with an interest in green and 'cruelty free' issues to make contact with like-minded people. The group currently has more than 40 members, and is hoping to achieve 200-300 members by the end of the year.

For more information, contact Tony Martin, c/o Rainbow Centre, 182 Mansfield Rd, Nottingham, NG1 3HW.

GNN MEETING

The latest meeting of the Greater Nottingham Green Network took place on September 6th. The meeting discussed finance for GNN, which is already secured for 1994, and funding for 1995, which is being considered now.

Networking ideas - such as developing skills training for groups - were also reviewed. The meeting decided that the Network should move to having an AGM each year rather than the current six-monthly meetings; the first AGM will take place in Autumn 1994 (possibly in November).

THIS SPACE COULD BE YOURS

If your group or business would like to advertise in Green Network News, contact Adam Woodward on 417849. Reduced rates are available for voluntary groups and small businesses.

RE-USING RESOURCES IN NOTTS

Three local organisations which enable individuals and organisations to re-use resources are described in this article. The re-use of resources helps to reduce the depletion of natural resources - by keeping materials and equipment in use, and out of landfill sites. By providing resources for re-use, these organisations are also providing a useful service to the community.

PLAYWORKS

Playworks provide a range of services for the Voluntary Children's Play Sector in Nottingham. This includes a Scrap Store with a huge range of materials from local companies, for use in creative and imaginative activities (domestic

scrap is not needed). The use of scrap materials also allows children to become used to re-using resources.

These materials are used by over 300 local groups - any voluntary organisation working with children is eligible to use the resources. The only charge is a £10 per year membership fee. Workshops to provide training in the creative use of scrap materials are also organised.

Playworks are currently looking for additional volunteers to help out at their centre in St Ann's (childcare expenses are paid).

For more information, contact Toni or Nik on 588668.



Playworks scrap in use at Sneinton Streetplay in August

FAMILY FIRST

Family First Ltd is a Voluntary Housing Association and charity providing housing and other practical help for local people.

Donated furniture and household items are collected for re-distribution to families in need. Items for children such as prams, cots and clothing are also collected. The Family first charity shops raise additional funds through the sale of non-essential furniture and clothes.

For further details, phone Family First Family Support Services on 507295.

ACTION RESOURCE CENTRE

Action Resource Centre (Notts) broker resources and equipment from the business world into the Community and Voluntary sector. Items brokered in the past have included computers, light bulbs, decorating materials and many other types of equipment.

For more information, Contact ARC (Notts) on 470749.

Playworks, Family First and Notts ARC receive support from Nottingham City Council and Notts County Council.

GREEN NAPPY SERVICES

Parents in Britain use more than three Billion disposable nappies each year. These have a major impact on the environment, but convenient alternatives are now becoming available.

Seven Million trees a year have to be cut down to produce Britain's supply of disposable nappies - North American and Scandinavian ancient woodlands are being rapidly depleted. The nappies contain plastic produced from crude-oil (which is a diminishing resource), and 95% of them end up in landfill sites.

An increasing number of nappy washing services are now available, that will collect used nappies and deliver fresh ones on a regular basis. Using one of these services can be cheaper than using disposable nappies, and the energy used in washing and drying is a fraction of that needed for producing disposables.

For information on local services, contact Nature's Nappies on 288604 or Nappy Care on 0623 742486.

For details of the Campaign for Reusable Nappies, phone WEN on 071 354 8823.

GNN FEATURES

These are the subjects planned for feature articles in the next 4 issues of Green Network News;

November - Energy.

December - Green Consumerism.

January - Practical Conservation.

February - Women.

If you would like to write an article about one of these issues, or you have a photo that could be used, please let me know. Articles are usually needed around one month in advance of publication, and can be sent on paper or 3.5 inch disk. We will also be looking for stories about any current events or issues each month; please write or phone if you would like to contribute.

Contact me on 417849, or write to me at:

Green Network News,
c/o The Rainbow Centre,
182 Mansfield Road
Nottingham
NG1 3HW

Adam Woodward (GNN Co-ordinator)

THE NOTTINGHAM GREEN CALENDAR

REGULAR DATES - EVERY MONTH

Tuesdays, Wednesdays,
Thursdays, & Sundays
4th Wednesday

British Trust for Conservation Volunteers (BTCV) activities - including a variety of practical tasks.
Contact Jeni on 313316.
Rainbow Centre Video Evening. 7pm. *Call 585666 with requests, or for details.*

OCTOBER 1993

ALL MONTH
Weekend 1st-3rd

Recycling Clothes Exhibition at the Rainbow Centre, 182 Mansfield Road, Nottingham. Monday-Saturday. 10am-5pm.
BTCV Tree Felling Training event. Cost £16-£23. Pick up from Nottingham Train Station at 7pm.
To book a place, phone 0532 742335.

Saturday 2nd

Notts Transport 2000 AGM. 10.15am at Nottingham train station meeting room (platforms 1/3).
Phone Ron Gillott on 201238.

Sunday 3rd

Pedals Cycle Rides to look at the route of the proposed Greater Nottingham Orbital Road (in support of the STOP campaign). Each ride starts at 10.30am. *Phone Robin on 606207, or Donna on 765182 for details.*

Sunday 3rd

Leen Valley Conservation Volunteers meeting. 10.30am at Rise Park Community Centre. *Phone 756376 for details.*

Monday 4th

Greenpeace Support Group meeting at the Narrowboat Pub, Canal Street. *Contact David Meacher on 257186.*

Tuesday 5th

NOGS (Nottingham Organic Gardeners) meeting, with a talk by Robert & Brenda Vale - 'The Earth Sheltered House'. 7.30pm at Stone Bridge City Farm, Stone Bridge Road, St Ann's. *Contact Mike and Penney Poyzer on 587006.*

Tuesday 5th

Oxfam Campaigning Group meeting. 7.30pm, Oxfam Office, 47 Gregory Boulevard, Hyson Green.
Contact Nick Osmond on 607797.

Thursday 7th

Women's Environment Network AGM - including elections and planning. 7.30pm. *Phone 753603 for details.*

Friday 8th

Greenpeace Youth Group meeting. Date and venue to be confirmed. *Contact Neil Shaw on 259417.*

Monday 11th

Nottingham Permaculture Group meeting. *Phone Phil Corbett on 474977 for details.*

Tuesday 12th

Bestwood Parish Council Public Meeting - to discuss the proposed Nottingham Orbital Loop Road.

Thursday 14th

Green Network News Editorial Meeting. 1pm at the Rainbow Centre, 182 Mansfield Road. All Welcome.

Thursday 14th

Friends of the Earth Meeting - including AGM and talk by Dave Barber of Notts County Council on 'Campaigning with the County Council'. 7.30pm at Nottingham County Library, Angel Row.

Monday 18th

Pedals monthly meeting. 7.30pm at Newmarket Inn, Broad St, Nottingham. *Contact Hugh McClintock on 816206.*

Thursday 21st

Notts Transport 2000 meeting. *Phone Ron Gillott on 201238.*

Friday 22nd

BTCV Training Day - Organising a Working Group of Volunteers. A free course for anyone considering setting up a practical project. *Contact Tony Newby, on 313316.*

Weekend 23rd-24th

BTCV Training Weekend - Hedges and their Management. *For more information, phone BTCV on 313316.*

Tuesday 26th

Ceilidh (with Bielzebub) - hosted by Lady Bay Community Association for Fields. 8pm at the Manor Club, Albert Road, West Bridgford. £2.50 on the door. *Contact Julie Scot on 822616.*

Tuesday 26th

Bulwell Environment Group meeting. Crabtree Farm estate Community Centre. *Contact Diana Langley on 273813.*

Thursday 28th

Nottingham Wind Power Project benefit gig (bands to be confirmed). 8pm at the Potters House, St James Street, Nottingham. £3.50 or £2.50 on the door. *Contact Sharon Higginson on 274334.*

NOVEMBER 1993

ALL MONTH

Wind Power Project exhibition at the Rainbow Centre, 182 Mansfield Road, Nottingham. Monday-Saturday. 10am-5pm. *Phone 585666 for details.*

Monday 1st

Greenpeace Support Group meeting at the Narrowboat Pub, Canal Street. *Contact David Meacher on 257186.*

Tuesday 2nd

NOGS (Nottingham Organic Gardeners) meeting, with a talk by the Head Gardener of Weleda Ltd. 7.30pm at Stone Bridge City Farm, Stone Bridge Road, St Ann's. *Contact Mike and Penney Poyzer on 587006.*

Tuesday 2nd

Structure Plan Review Public Meeting. 7.30pm at the Assembly Room, County Hall, Nottingham.
Phone 774327 for details.

Friday 5th

Greenpeace Youth Group meeting. Date and venue to be confirmed. *Contact Neil Shaw on 259417.*

Weekend 6th-7th

BTCV Training Weekend - Tree Planting. *For more information, phone BTCV on 313316.*

Sunday 7th

Leen Valley Conservation Volunteers meeting. 10.30am at Rise Park Community Centre. *Phone 756376 for details.*

Monday 8th

Oxfam Campaigning Group meeting. 7.30pm, Oxfam Office, 47 Gregory Boulevard, Hyson Green.
Contact Nick Osmond on 607797.

Monday 8th

Nottingham Permaculture Group meeting. *Contact Phil Corbett on 474977.*

Thursday 11th

Friends of the Earth meeting. 7.30pm at Nottingham County Library, Angel Row.

Thursday 11th

Green Network News Editorial Meeting. 7.30pm at Rainbow Centre, 182 Mansfield Road. All Welcome.

Call on 417849 before setting dates to avoid clashes, and to have dates added to this calendar.

Phone numbers Nottingham unless stated otherwise.

Green Contact Details are also available from The Rainbow Centre on 585666.

Printed on Recycled Paper.

If you would like to be sure of receiving Green Network News every month, your name can be added to our mailing list. These are the voluntary (optional) subscription rates for 1 year's issues; Individuals - £2.50, Groups - £5.00.

Nottingham Green Network thank Nottingham City Council and Nottinghamshire County Council for their support.

Opinions expressed herein are not necessarily those of other contributors, or of the Editorial Group.

T R A N S P O R T

THE WIDER IMPLICATIONS OF ROAD BUILDING

A study by the CPRE (Council for the Protection of Rural England) and the Countryside Commission shows that within a few decades there may well be nowhere in the Southeast free of the sight, sound or smell of traffic. Nottinghamshire is not in the Southeast, but the same is happening here, albeit more slowly.

Each Kilometre of motorway built takes about 7½ hectares of land and destroys the wildlife it supported. But beyond the loss of land, the effects of new roads are much further reaching.

Building roads requires materials - 43% of aggregate quarried in England and Wales is used for roads, and villages such as Hoveringham have suffered for years from the effects of extraction. The Government has forecast a vastly increased need for aggregate, and more 'superquarries' on the beautiful west coast of Scotland may be developed.

Roads sever communities, both wildlife and human. Any animal population is viable only above a certain size and carving countryside into ever smaller pieces prevents interaction between groups. People too are cut off from one another as children and elderly residents cannot visit neighbours or shop without help.

Nearly a fifth of the UK's Carbon Dioxide emissions come from road transport and nearly half the Nitrogen Oxides - and road traffic consumes nearly 30% of energy used.

The freedom and flexibility that cars provide has to be balanced against the consequent loss of quality of life. Building ever more roads **cannot** solve all our transport problems - as roads often generate urban development and further traffic - and the problems of congestion are compounded. We have to change the emphasis towards better traffic management, increased use of public transport, and planning to reduce the need to travel.

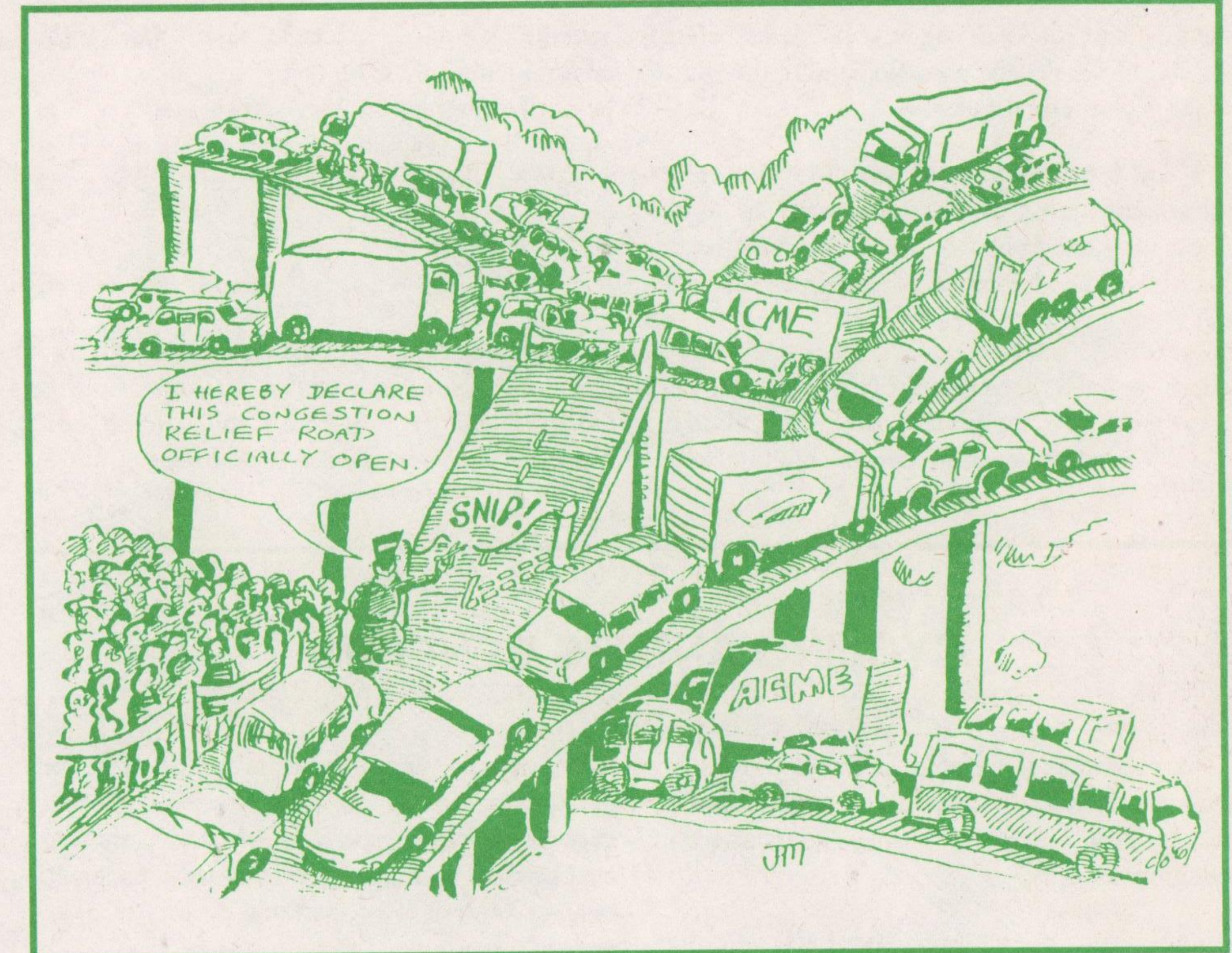
Carol Collins, Notts CPRE.

ACTION TIPS

- ☐ Walk or cycle wherever possible; most journeys are short distances.
- ☐ Use public transport.
- ☐ If you have to drive;
 - service your car regularly.
 - install a catalytic converter.
 - drive carefully.
- ☐ When buying a car think about fuel efficiency.
- ☐ Find out more about local transport campaigns, and how you can help.

TRANSPORT FOCUS

This month's feature covers the subject of Transport. Articles set out some of the problems caused by road transport, and consider a few of the alternatives. Action Tips and a Contact List are also included.



STOP THE ORBITAL PROPOSAL

Stop The Orbital Proposal (STOP) was formed in order to oppose Nottinghamshire County Council's proposed Northern and Eastern Outer Loop Road.

The proposed route runs from the M1 at Hucknall to a planned crossing of the Trent at Colwick, and is being opposed as it will have all of the usual damaging effects on the environment of any major road.

In addition, STOP is opposed to the proposal to build over 30,000 new houses around the route, on Greenbelt land.

The separate proposal for a Trent crossing at West Bridgford would also link up with the orbital road, and is being opposed by the FIELDS campaign, who feel that the crossing would cause serious environmental damage in the local area.

The proposal of the road forms part of the County Council's Draft Structure Plan, (covering the period up to 2011) which will be available in local libraries from 28th September to 12th November 1993 - the period of public consultation.

The structure plan proposes that a Gedling Bypass (which would cover a similar route to part of the proposed Orbital Route) should be built before 2011.

However, the rest of the orbital road would not actually be completed during the period covered by the plan - the remaining parts of the route would be protected for possible construction at a later date.

STOP are organising public meetings and circulating a petition against the road proposals but feel that the best way for people to comment is to write directly to Nottinghamshire County Councillors, especially those on the Environment Committee.

For more information, contact Ian Grimwood (of STOP) on 874406.

For information about the FIELDS campaign, contact Julie Scott on 822616.

continued on back page