



Are you suffering from a relationship breakdown?

FREE ½ HOUR INTERVIEW

Civil Partnerships/Separation/Contact & Residence of Children,
Property & Financial Issues upon Separation, Domestic Abuse

- Legal Aid Available
- Low Hourly Fees

Contact: Daniel Priest, Partner

Freephone: 0800 1071 208

admin@campions.co.uk

LOW FEE CONVEYANCING

- 1st Time Buyers Discount
- Free Online Quotes
- Fixed Fees - No Hidden Extras

Low
Cost
EPCs

Freephone: 0800 1071 207

admin@campions.co.uk

www.campionssolicitors.co.uk

45-49 Mansfield Road, Nottingham, NG1 3FH
(Nr. Victoria Centre)

FREE CAR PARKING



resolution
first for family law

Regulated by The Solicitors Regulation Authority
Written Quotations Available on Request

Community
Legal Service



LOOKOUT

Dec 2012 Jan Feb 2013

MERRY CHRISTMAS

Issue 65

Editorial:

My plea this quarter is for support — not just for Lookout but for all the clubs, groups, events that dedicated women put tons of effort into organising to keep the spirit of the sisterhood alive. I know it's cold & wet at this time of year but if you like good company & kicking a ball around give the women's 5 a side a try (see page 4). What about a good night out with a few drinks, music to suit most tastes, a chance to dance like there's no one else in the room and the convivial camaraderie of likeminded women then where better than the Belper Disco and Juice. Sadly the Melbourne disco will not be making an appearance in 2013 but all are welcome to the Xmas Finale on 14th December to see it off with a bang. Don't forget the more irregular happenings like LIRAIN & the benefit nights for Million Women Rise & Breast Cancer and the clockwork get togethers of SYNT, the Book Club, Sapphist Writers & badminton.

News from the Nottingham Women's Centre

One of the key things keeping us busy over the last few months has been a new history project we're working on. We're currently trying to track down women who were involved in the Centre during the time we moved to Chaucer Street (1986-87). The aim is to have a bit of a reunion before our AGM on Wednesday 5th December so from 3pm we're inviting women in to share their stories, reconnect, have a tour around the building and eat cake! Our AGM will follow this from 5pm and we'll be finishing the evening off with a bit of women's comedy (upstairs unfortunately) from 7pm - this will be a taster of what we have planned for International Women's Day next year.

The reunion is only the beginning. We're writing a bid to the Heritage Lottery fund for a small amount of funding for us to develop this work further and stretch all the way back to 1971 — capturing the stories of the women involved in the early days, the views of the public at the time, the impact on partners, children and so on. If you can help — perhaps you were involved back then or know a woman who was — then please get in touch.

Aside from that, we've also got an enrolment day for our courses and activities on Wednesday 9th January from 10am-2pm. Several of our popular courses will be running again, such as 'Building Self Confidence' and 'Maths for Life and Work', but we'll also be trialling some new courses including 'The politics of gender and the gender of politics' and 'Women and social media'.

Contact us: 0115 941 1475 / admin@nottinghamwomenscentre.com



Nottinghamshire's Rainbow Heritage will hold its annual Celebration & Awards evening at the Nottingham Council House on Tuesday February 26th 7-9 pm. Entry is free (as is the food and drink!) all welcome. This year's guest speaker is Professor Greg Woods (professor of gay and lesbian studies at Nottingham Trent University) and the year's awards will be going to:

Nottingham Women's Centre

Nottinghamshire Health Care NHS Trust/Catherine Conchar

WOW, the Worksop LGBT Youth Group.



LOOKOUT! Is sponsored by CAMPIONS SOLICITORS

WOMEN'S REGULAR EVENTS & SPECIAL ACTIVITIES



Belper Disco
dates for 2013

Sat 9th Feb

Sat 15th June

Sat 12th October



women only

DISCO

at Melbourne

Dancing from 9pm to DJ Kaz

Fri 14th December

"The Xmas Party"

Free entrance

Raffle prize donations welcome

All beers, wines and spirits are at very competitive prices,
served by very friendly bar staff.

BeatRoute Sounds Presents...

JUICE @ XMAS

for WOMEN with an enhanced sense of fun

@ The Fed

Resident Dj's

D'Or & Diddy

Saturday

8pm-1am

MAY 26TH
SEPT 8TH
DEC 8TH

£5/£3

SQUEEZE...

~~NOT with the Very Good Disco Band~~

Federation House, Claremont Road, Nottingham NG5 1BH
(between Sherwood Rise and Hucknall Road)

For more info email: juicenottingham@yahoo.co.uk or join

Facebook: [juicenottingham](https://www.facebook.com/juicenottingham)

Million Women Rise Benefit

The next one will be on
Saturday 16th February 2013

At the Polish Centre
Clumber Avenue
off Sherwood Rise
and will star

The Very Good Disco Band

See page 3 for some further info
on what Million Women Rise is all
about.

RADIO Trent FM

Friday nights from 10pm til midnight,
Leigh & Natasher host the only local
radio show featuring all things gay.
Tongue-in-cheek banter combines with a
playlist of upbeat classics & other more
leftfield tracks plus regular guest
appearances from the Switchboard &
Nottingham Hyking Dykes to mention
but two. You can email
out@trentsound.com with any info about
upcoming events.

ODDS & ENDS

BITS & BOBS

JUICE Festive Special - we hope this will be the best JUICE so far, if you haven't been before come along and check it out, it's a women only event, all women are welcome. This time we have some guest DJ's joining resident DJ's D'or and Didi on the decks, adding some new dimensions to the sounds, hopefully something to please everyone.

Juice is a night out for women organized by women in Nottingham's lesbian community. The idea grew from their desire to have a good, women only night out that didn't involve clubbing or going into town. The aim of Juice is to put on exciting events that provide a safe, welcoming and inclusive environment where women can dance, relax and have a good time together.....

It is a non-commercial event, the aim is to cover costs, and if possible to upgrade the equipment to enhance the sound experience, beyond that if we get a really good turnout any profits will go to charities which support women.

The Juice gang had a bit of a planning meeting recently and decided to do a few fun festive things on the 8th like nibbles and small pressies. We are going to introduce an updated version of 'dance cards' so women who might be a bit shy can more easily ask another to dance or chat with them - every little helps eh!

We are also going to have a couple of guest djs this time too so the music will be a bit more diverse. If there are any budding djs out there who would like to do a set, please get in touch and we'll give you a try out/ training session on the system. Please encourage women to come and support the event - the numbers have been increasing and hopefully will carry on going up. There are very few women only events and we want to make sure it keeps going. We are all about women having a good time together. All we need is the women so get your dancing gear on a come join us.

If you or a friend is celebrating a birthday around the 8th let us know a favourite tune and we'll give you a mention

Nottingham Hyking Dykes - 15 minutes of (lesbian) fame

Nottingham Hyking Dykes are featured in a double page spread in the December issue of Diva magazine. It came about when Celia Clayton was contacted by freelance journalist Bella Qvist who writes regularly for Diva. They are trying to improve their coverage of the lesbian "scene" outside London and Brighton so Bella who is based in Sheffield, has been looking for new groups to interview.

She came along on the October walk from Cromford, chatted to most of the women on the walk and took pictures as she went along. The resulting article features members old and new and describes her positive impressions of joining the hike. "...I feel revived; full of wise words and fresh air. Now only cake is on my mind" says Bella.

Nottingham Hyking Dykes have been going for over 20 years and walk every third Sunday of the month with added extra walks from time to time. Hikes are usually in the Peak District but also cover Nottinghamshire and Leicestershire. The next walk is on Sunday 16th December from Jacksdale (just west of the M1 J27), and is around 7 miles starting at 1030. New members are always welcome, more information is available from the web-site www.nottinghamhd.org.uk.

I hope Celia won't mind me mentioning something I just picked up on LinkNotts

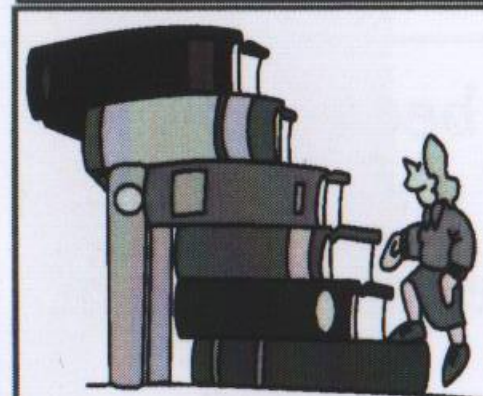
If anyone is interested, I am taking part in a Photography exhibition on at the City Gallery, Long Row from 4-16th December. The gallery is right in the city centre, up an alleyway opposite the Tourist info centre - (next to Primark), so if you want some respite from the shops then do pop in. It's open 11-6pm from Tuesday to Saturday and they serve very reasonable tea and coffee. The other photographers are all my fellow students from the MSc in Biological Photography and Imaging and there will be some really varied work on show and some for sale if you are stuck for present ideas.

More info here <http://www.davidparryimaging.com/exhibition2012/>

Samples of my work at www.celiaclayton.co.uk



Sports & Socialising



Midweek Book Group

Read a set book and then join in
with the discussion group
Meeting at 7:30 Canalhouse Bar

If you would like to join us please contact the group
co-ordinator by joining the yahoo discussion group:
from now on please check on the
LinkNotts group email facility

19th Dec Zami : a new spelling of my name by Audre Lorde

Unfortunately we have had to disband
LAFS due to lack of support but have
decided to have a social group - Mansfield
Rainbow Divas - which is on Facebook as
well.

We will be keeping the LAFS phone with
Sharon if anyone wants to get in touch
for friendship or support.

Please note this is our new email address:
mardivas@hotmail.co.uk

Sapphist Writers

Nottingham Based Women's
Writing Network

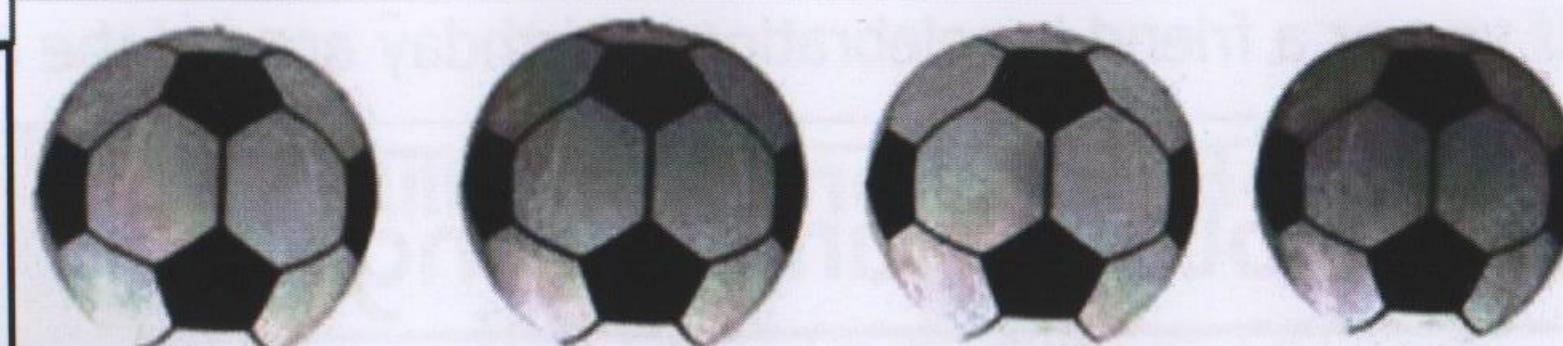
Meets Second Monday of Every Month, 7.15pm
For more info email sapphistwriters@yahoo.co.uk
<http://sapphistwriters.blogspot.com/>

Lesbians in Nottingham konnected:

An online community/ email group in
Nottinghamshire
for lesbians to keep in touch and informed
<http://groups.yahoo.com/group/linknotts>

Lezzie Family Group

Meet on the second Sunday of the month at
Stonebridge city farm (see page 6)



Sherwood Ladies 5-a-side footie

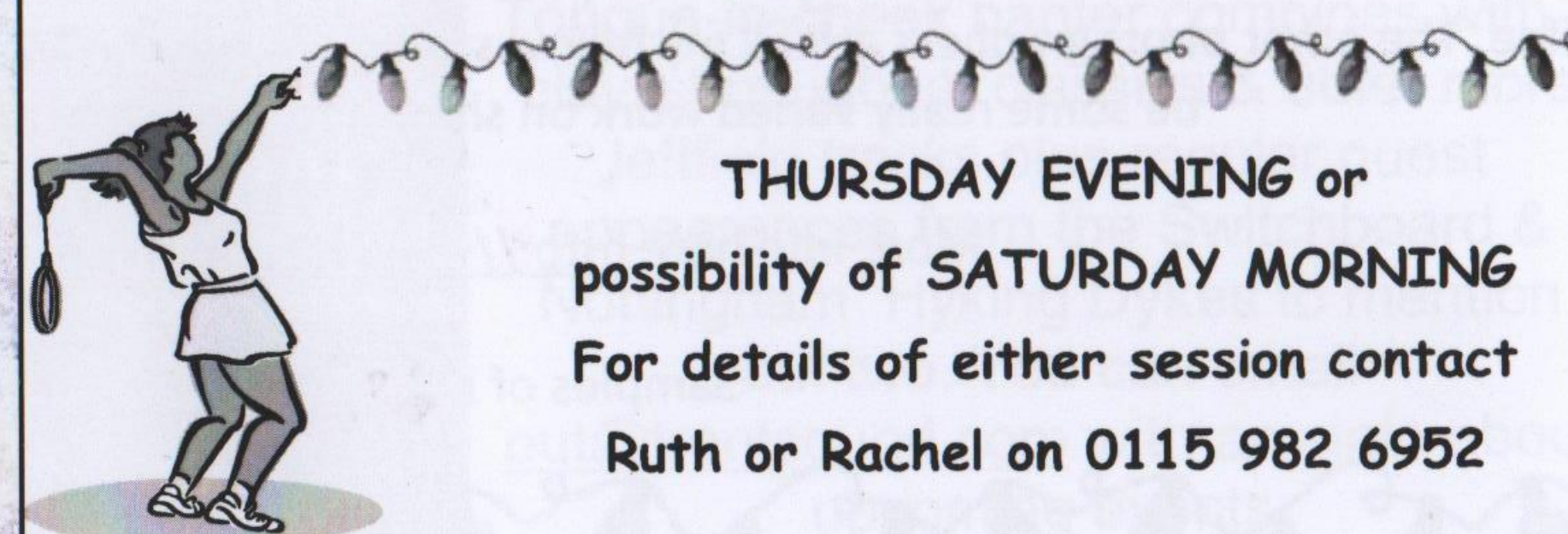
Meet every Tuesday 6 - 7 at the
Forest Astro Turf (Goose Fair site)
Suits all levels of fitness & ability,
everyone welcome
More info Julie Bennett 07790 998205
or email joolzy_joolz@hotmail.co.uk

WOMEN'S BADMINTON

PORTLAND LEISURE CENTRE

Newcomers please check for details

THURSDAY EVENING or
possibility of SATURDAY MORNING
For details of either session contact
Ruth or Rachel on 0115 982 6952



**See You
Next
Tuesday!**
for girls who like girls

NEW VENUE

meet. chat. laugh.

**Every Tuesday 8pm
Broadway Media Centre
Broad Street, Nottingham**

[facebook.com/syntgirls](https://www.facebook.com/syntgirls)
syntgirls@hotmail.co.uk

Sunday Walking

NOTTINGHAM HIKING DYKES

walk 3rd Sunday of the month at 10:30.

16th Dec meet at Jacksdale War Memorial, Main Road, Jacksdale NG16 5LU.
Walks in 2013 : 20th January, 17th February, & March

See the brilliant new web site at www.nottinghamhd.org.uk

For full details of the various walks and camping events please make contact direct with the group
or www.peakhd.webs.com or ring Lesbian and Gay Switchboard 0115 9348485



Derby Walking Women

Walks are normally on the 1st Sunday of the month, meet at 10:45 for 11:00 start, each
walk is organised by volunteer(s) and full details are given out on the walk the month before
or check out the website <http://www.derbywomenswalkinggroup.webs.com>

Sun 2nd Dec

Chatsworth meet at the car park near the garden centre cost £2

Rolling hills & fabulous views. Lots of livestock so dogs could be on leads for much of the walk.

Afterwards we'll go to a pub or coffee shop depending on general consensus.

Details can also be obtained by contacting the overall co-ordinators on 07786 803455
(or an email can be sent on to them via lookoutmag@hotmail.com)



North Nottinghamshire Walking Group

The group is not able to do regular walks at the moment but make contact direct to find out the latest.
Phone Julia 07961 847091 or email nnwalkers@yahoo.co.uk for more details.

SHEFFIELD HIKING DYKES All Sunday walks start at 10:30 unless otherwise stated. Contact the group
direct for details of locations and other walks. A full & varied programme of walks throughout the year. Check
out their website <http://hikingdykes.webs.com/sheffield/> or phone Deena on 0114 268 6409 or Sandra on
01226 767179 or email sheffield-hd@hotmail.com

Peak Ruffy walks: These walks are for women who like walking longer and faster and over more challeng-
ing ground. Hikes are usually about 10 to 14 miles in the Peak District on the last Saturday of the month.

Information about forthcoming walks is posted to members of the peakruffies yahoo group. You can join this
group by emailing: peakruffies-subscribe@yahoo.co.uk

<http://peakhd.webs.com/walks.htm> ALL the walking group dates in calendar format

Nottingham HD extra walk - Sun 30th Dec 2012

Meet Curbar Gap car park (£4.00 for day) for 10.30am start - OL24 grid 263 7474 walk over Curbar
Edge stop at the Grouse inn for mulled wine & the loo, then back over White Edge. Dog friendly; child
friendly but wrap up if cold as fairly exposed on the edges. Should be back by 3pm. 6.5 miles.

Sally 07786 173400.

How exciting it was to see the 2 page spread in Diva featuring Nottingham Hyking
Dykes. I actually bought my first copy for goodness knows how many years. Not since
my partner lost her horoscope column when the then editor, Gillian Rodgers, moved
on to bigger & better things and the new kid on the block favoured the "lucky biscuit
this month for Pisces is a custard cream" variety of prediction writing. OK, OK, I know
I've got a biased view and I appreciate that many of you probably find the whole
Astrology thing akin to the devil's work but there's still room for integrity within any
viewpoint. Great acknowledgement though that Walking Groups can be such a vital part
of lesbian social life.



INTERESTING STUFF

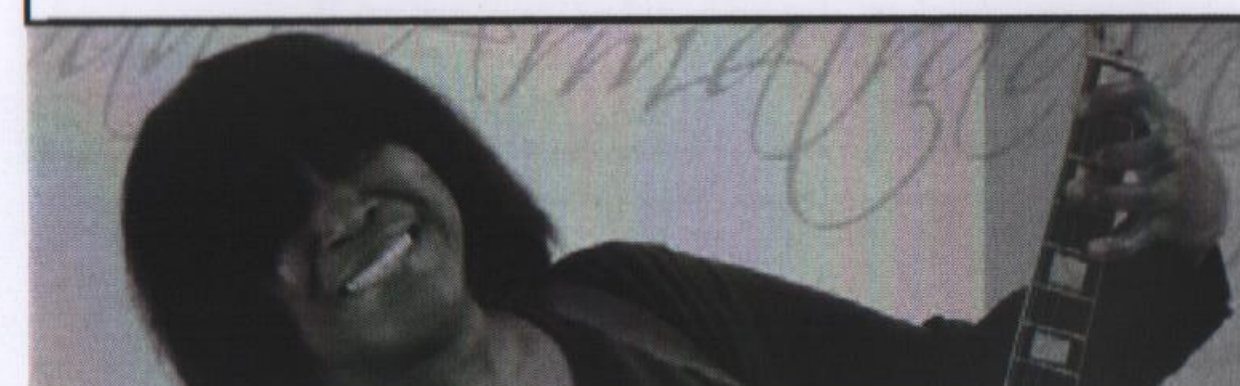
Nottingham Women's History Group

Full spring / summer programme, still being worked out but in the meantime please note the following date

Saturday 9th March at 2:30pm
Notables, Nurses and Nuns

Our popular women's history walk, around the Ropewalk area
Meet at the Playhouse,
Wellington Circus, Nottingham, NG1 5AF
Cost £2 donation

Nottingham Women's History Group
www.nottinghamwomenshistory.org.uk
nottmwomenshistory@gmail.com
Mo 07950 472022 or Val 0115 941 9186



great night out on 20th October, traveling to Derby to see Joan. Surprisingly not too many Nottingham women made the trip, but Joan was her usual easy going self, with songs old and new. She is truly the soundtrack of my life, with the empowerment Me, Myself I and the sheer fun of Drop the Pilot. Joan has selected local singer songwriters to perform at each of her gigs, to showcase local talent. Can't



The Venue, Derby, 18 Nov 2012 saw the launch of Delicata's new cd Love, Tears & Lemonade. An assortment of family, friends & fans had a great night listening to familiar favourites and new tracks from the album. An enthusiastic Conga round the room & up on the stage was an additional highlight.

You can download the album from itunes or cd baby.

Alternatively, and much more satisfying, you can catch a live performance on 1st December at the Hilltop pub, 178 Belper Lane, Belper DE56 2UJ (run by John & Graham of the Bulls Head at Belper Lane End)

Lezzie Family Group

We still meet on the second Sunday of the month, next date is 9th December day after Juice! We meet about noon at the Stonebridge City Farm. Its a smallish group, usually just a few mums/grannies and their kids who tend to be from new born to about 10 now. We are open to suggestions about meeting someplace else if that's what women want. The farm is free (tho donations are always welcome), there is a cafe selling hot and cold food, a small play area, animals to feed, a fruit and veg garden and plant/veg sales. Women can ring Judi on 07888657916 if they want before they come or just turn up.

You can send your own reviews, requests for further information, donations, adverts, articles and details of social events (by 7th February please) to lookoutmag@hotmail.com or to
Lookout C/o The Women's Centre, 30 Chaucer Street, Nottingham NG1 5LP.



Lesbian/Bisexual Women's Cafe

Second Monday of each month 5:30 - 7:30 meet in a relaxed atmosphere & catch up with old friends, meet new people. Food & non-alcoholic drinks available for small donation.

Newcomers always made welcome.

December - Xmas Fuddle - please bring food to share (Monday 10th Dec)

Jan - Special Event: Celebrating Women's Activism - we're inviting women to share their songs and stories of activism and protest, past and present, from Reclaim the Night and the miner's strike to modern-day Facebook campaigns, cuts protests and Million Women Rise. Bring your guitars, your songs, poems, leaflets and ideas . . . (Monday 14th January)

HELP & SUPPORT — this hasn't been updated for a while

Nottingham Rape Crisis Centre

If you have been sexually assaulted and need help, information, or someone to talk to phone 0115 941 0440. Confidential, free and independent.
Run by women for women

Women's Drug Service

Free and confidential service for women who use, have used or are at risk of using drugs.
Tel: 01623 785 444

Outburst! Is an LGBT group for young people aged 11 to 25. Meet at NGY Myplace every Wednesday from 6:00 to 8pm.

Contact details
info@outburst.org.uk
0115 952 5040

Nottingham Police LGBT Consultation Group.

Meets every 3 months (usually at the Adams Building in the Lace Market). Representatives from local lesbian/bi groups are welcome. Details via Switchboard or the GAI Project.

Broken Rainbow Helpline 020 8539 9507 for lesbians experiencing abuse from their partner.

FLAME (Lesbians with ME group) Support & social group for lesbians with ME (Chronic Fatigue Syndrome) contact Self Help Team, Ormiston House, 32-36 Pelham St. 0115 911 1661 or Morag on 0115 847 1544 or email: morag-@ntlworld.com or nottslesbiancentre@ntlworld.com

Relate Nottinghamshire

The Relate counselling service is available to all adult couples experiencing problems in their central relationship, including gay and lesbian couples. Tel: 0115 950 7836.

Services include Family Counselling, SexTherapy, Relationship Education and training courses

Nottingham LGBT Consultation Forum

(formerly Notts LGBT Community Voice)

(and before that the LGB Forum)

meets every 3 months, and can be contacted via Switchboard (0115 934 8485), the GAI Project (0115 947 6868) or the City Council

Tipping the Velvet

Advice for women who have sex with women. Advice & help with sexual health, drug use, domestic violence, etc. Service is free & open to women of all ages. For more info contact Donna. The Health Shop, 12 Broad Street, Hockley, Nottingham NG1 3AL or 0115 947 5414 or healthshop@nottinghamcity-pct.nhs.uk

Nottingham & Nottinghamshire Lesbian & Gay Switchboard

Confidential info, advice & support from trained volunteers.

C/o VAC, 7 Mansfield Road, Nottingham NG1 3FB or e-mail notts@lgswitchboard.fsnet.co.uk

0115 934 8485 or 01623 621 515 Mon - Fri 7.00 - 9:30 pm

Domestic violence within Lesbian and Bisexual relationships

Roshni Community Outreach service for ALL women

0115 988 1414

Monday to Thursday: 9-5 pm

Friday: 9-4.30 pm

Broken Rainbow helpline

08452 60 44 60

Monday: 2 - 8pm Wednesday: 10 - 1pm Thursday: 2 - 8pm

Every Thursday Evening 6:30-7:30pm

At Self Help Nottingham
2nd Floor, Ormiston House
32-36 Pelham Street
Nottingham NG1 2EG

For more details contact the Self Help Nottingham Information Line on 0115 911 1661 (9am-1pm Mon-Fri) or email info@selfhelp.org.uk

This group is supported by The Recovery Network at Self Help Nottingham. For more information about finding, joining or starting a self help group contact: 0115 911 1662 therecoverynetwork@selfhelp.org.uk



We can help you break free
Confidential help - 24 hours a day
7 days a week, 365 days a year
Freephone **0808 800 0340**
Textphone **0808 800 0341**
Office **0115 947 5257**
www.wais.org.uk