



Are you suffering from a relationship breakdown?

## FREE ½ HOUR INTERVIEW

Civil Partnerships/Separation/Contact & Residence of Children,  
Property & Financial Issues upon Separation, Domestic Abuse

- Legal Aid Available
- Low Hourly Fees

Contact: Daniel Priest, Partner  
**Freephone: 0800 1071 208**  
admin@campions.co.uk

## LOW FEE CONVEYANCING

- 1st Time Buyers Discount
- Free Online Quotes
- Fixed Fees - No Hidden Extras


Low  
Cost  
EPCs

**Freephone: 0800 1071 207**  
admin@campions.co.uk

**www.campionssolicitors.co.uk**

45-49 Mansfield Road, Nottingham, NG1 3FH  
(Nr. Victoria Centre)

**FREE CAR PARKING**

 **resolution**  
first for family law

Regulated by The Solicitors Regulation Authority  
Written Quotations Available on Request



# LOOKOUT

Sept Oct Nov 2013

Issue 68

### Editorial:

I guess you might be looking for some words about the lack of what should have been the previous issue. There are none, no excuses, no explanations, it just happened, now it's time to move on.

### Lookout for the Future!?

How should Lookout plan for the future, and evolve in the electronic and social media world? How can Lookout, LinkNotts, QB(Queer Bulletin), The Womens Centre and other networks best complement each other? Is there a future for a quarterly print and email newsletter, and what do you want from this? And, could you help to keep Lookout going? We need women to help for example with reporting, writing, liaising with advertisers, and distribution.

October's Lesbian/bi-women's cafe evening at Nottingham Women's Centre on Monday 14th October ( 5.30 - 7.30pm) will include time for discussion about Lookout, networking and information sharing. Please do come along and take part in the discussion if you read or send events information to Lookout, or are interested in wider lesbian/bi-women and LGBTQ networks in Notts and E Midlands.

## News from the Nottingham Women's Centre

September is an interesting month to be a woman in Nottingham – here's why:

Nottingham Women's Conference, being held on 21<sup>st</sup> September, is an initiative organised by Nottingham Feminist Action Network with support from Nottingham Women's Centre. The conference aims to bring together women in Nottingham and the surrounding areas to focus on some of the key issues facing women today. The primary motivation of the conference is to promote new ways of thinking about women's rights, to provide an opportunity for networking and most importantly, to reach women who ordinarily would not consider themselves as a feminist.

Conference tickets are now sold out but there are close to 40 different fringe events happening across the city during September so there are still opportunities to participate. The fringe events include:

- A performance of 'Lady in Red' at the Nottingham Playhouse on Friday 6<sup>th</sup> September, 7pm. This is an award-winning play written and performed by Certain Curtain Theatre Company which looks at the story of one woman's struggle to break the 'Chains of love'. Tickets are £6/£3.
- Another Women Stand Up! Comedy Fundraiser at the Maze, Mansfield Road on Thursday 12<sup>th</sup> September, 7pm. This was a sell out event in March and this time around features the fabulous Kate Smurthwaite. Tickets are £6/£5.
- A discussion on Lesbians and Feminism, followed by the launch of Lesbians in Nottingham, at Nottingham Women's Centre on 20<sup>th</sup> September from 7pm.

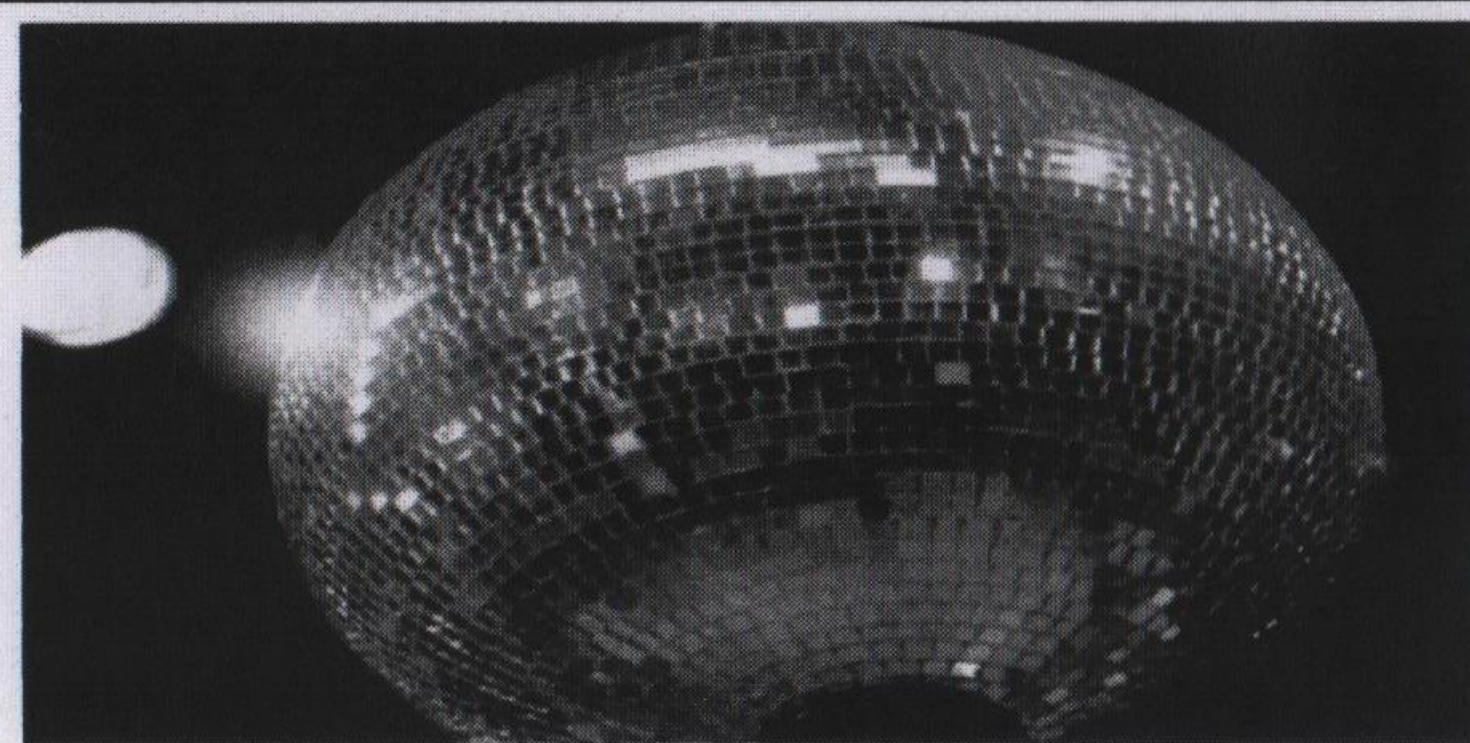
Plus many, many other events (mostly free) – see: [www.nottinghamwomensconference.wordpress.com](http://www.nottinghamwomensconference.wordpress.com) for more info or pick up a leaflet from Nottingham Women's Centre reception.

It's also a great time to be thinking about getting involved with what's on offer at Nottingham Women's Centre. We have our autumn enrolment day coming up here on Wednesday 4<sup>th</sup> September, 10am – 2pm, with lots of new courses and activities starting. We're also launching a new project – ReNEW – which will strengthen our activities for women with common mental health issues such as anxiety, low self-esteem and depression. ReNEW will be a combination of empowerment sessions, creative therapy and one-to-one counselling. Look out for more information about this on our website: [www.nottinghamwomenscentre.com](http://www.nottinghamwomenscentre.com).

**LOOKOUT! Is sponsored by CAMPIONS SOLICITORS**



## WOMEN'S REGULAR EVENTS & SPECIAL ACTIVITIES



### Belper Women's Disco

2013 DATES

~~Saturday 15<sup>th</sup> June 2013~~  
Saturday 12<sup>th</sup> October 2013

8pm til Midnight  
(Dj from 9pm)

£5 Entrance on the door

Belper Town Football Club  
Belper  
DE56 1BA

Email [dixdegrees@googlemail.com](mailto:dixdegrees@googlemail.com) for further info

Noted recently that the 12th Oct is being described as the LAST disco to be held at Belper.

It's not long now! We have missed dancing with you over the summer and cant wait for another night of fantastic tunes, meeting you and your friends, chatting and dancing. This night is for all women - black or white, older or younger, lesbian, straight, bi or trans, on your own or with your friends. We try to make it very welcoming especially to those of you who venture out alone, you will soon feel at home and enjoy yourself. DJs Dor and Sarah are always willing to give women the chance to do a guest set to do your own thing and mix it up. So if you already DJ or have always wanted to then get in touch. Hoping to see you on the 7th. We have to finish at 1 so come early to fit all the dancing in

Venue: The federation Club, Claremont Road, Nottingham, NG5 1BH (between Sherwood Rise and Hucknall Rd). We're on Facebook Juicenottingham. 8pm to 1am

**WAGED: £5  
UNWAGED: £3**

**SATURDAY:  
13TH APRIL  
7TH SEPTEMBER  
7TH DECEMBER  
8PM-1AM**

**FREE PARKING  
ACCESSIBLE**

**FEDERATION CLUB CLAREMONT ROAD  
NOTTINGHAM NG5 1BH**  
(between Sherwood Rise and Hucknall Road)  
For more info email:  
[juicenottingham@yahoo.co.uk](mailto:juicenottingham@yahoo.co.uk) or  
join Facebook: [juicenottingham](https://www.facebook.com/juicenottingham)

**GET UP!**

**Julie Felix**  
international Folk Artist  
of Distinction

**MILLION WOMEN RISE**

**The Polish Centre**  
Clumber Avenue  
off Sherwood Rise  
Nottingham NG7 6JN

**Natalie Duncan**  
singer/songwriter,  
Alternative Brit  
Award nominee

**women only  
all women welcome**

**Tickets £10 / £7 / £3  
at the door**

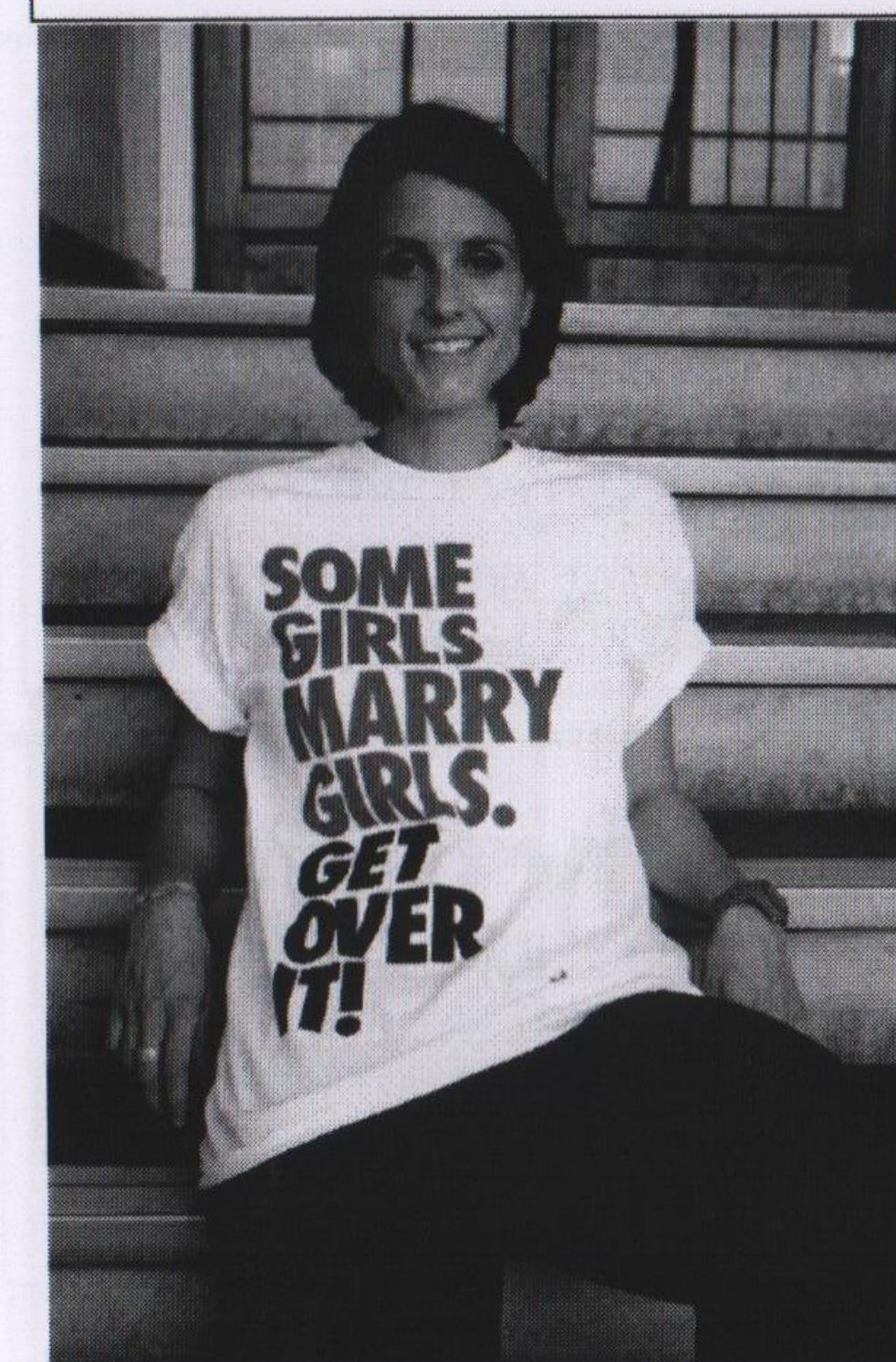
**DJs from Juice  
Compere: Pam Burrows**

**Benefit**

Find us on  
facebook

East Midlands Million Women Rise  
Contact: Mo 07970 420713

## ODDS & ENDS

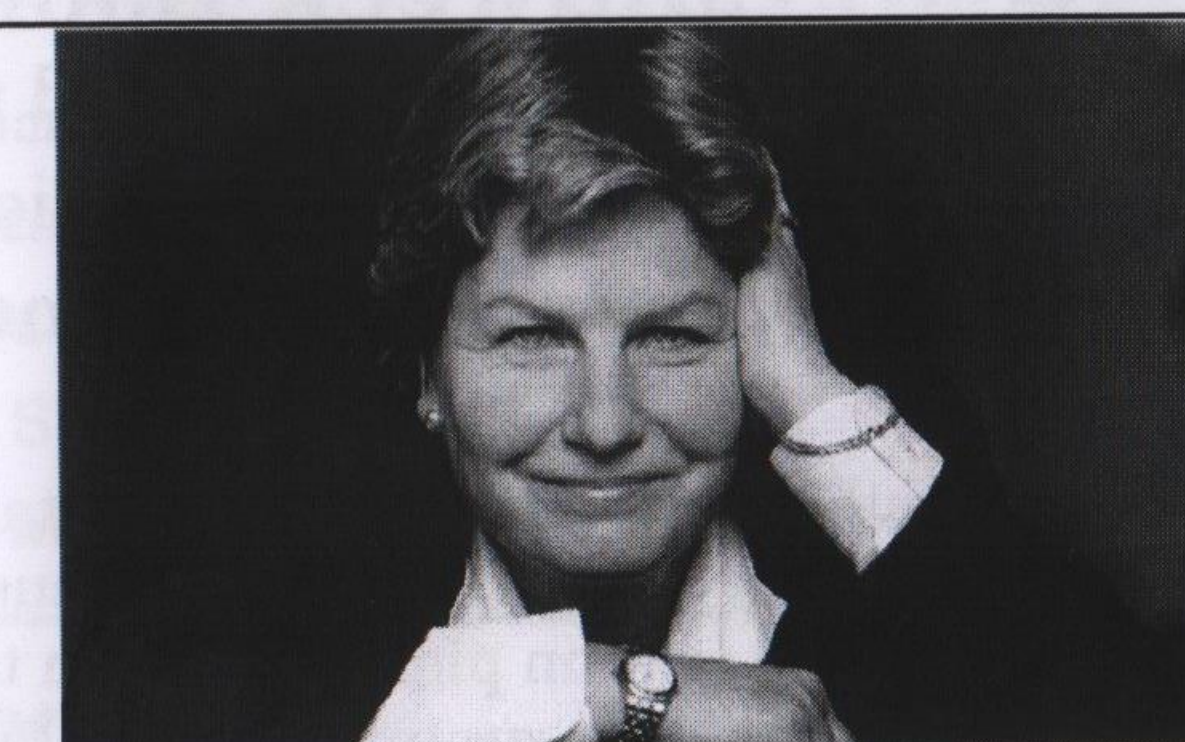


No doubt many women/girls will be disappointed that Heather chose to re-visit the Guitar Bar as part of her acoustic tour in October.

With only 50 tickets available the venue was sold out within half an hour of them going on sale. I thought about tweeting & suggesting she hop over the road to the Polish Centre but it was too late. Should be a great evening - it was last time she appeared there a few years ago.

## BITS & BOBS

Derby Assembly Rooms Nov 1st



Long-standing host of Radio Four's **News Quiz** and **Excess Baggage** and regular **QI** panelist, Sandi will be performing her uniquely witty evening of stand-up, stories and fascinating facts.

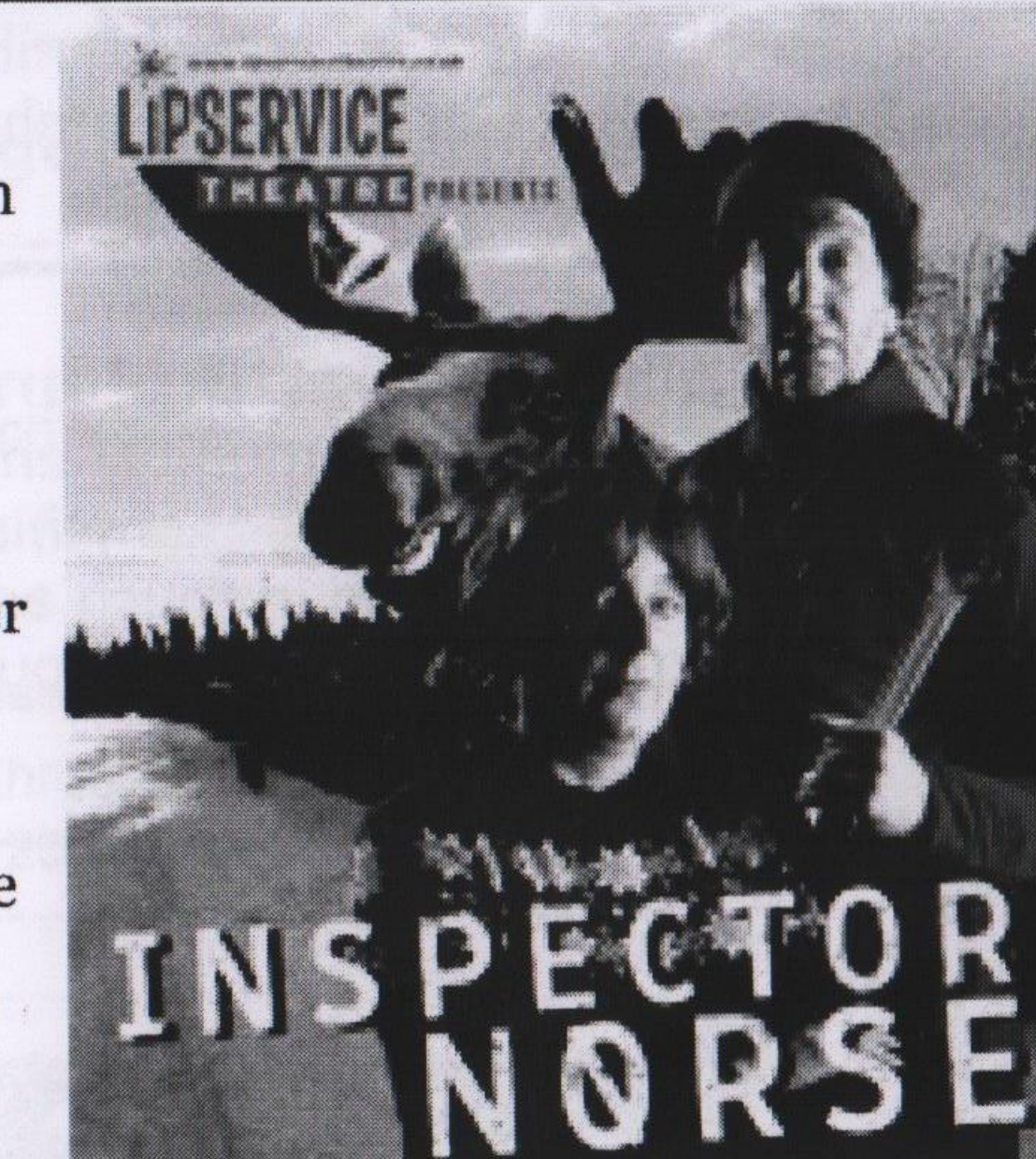
## Nottingham Playhouse 5th September

### A self-assembly Swedish crime thriller

It is bitter mid-winter. Ex-pop-star recluse Freya looks out of her log cabin at a rural winter scene. She smiles and turns back to her meatballs. But who is the stranger Nordic walking across the frozen wastes? In a fur hat. With a chisel. Days later a man is found dead in a barn nearby with a bizarre message carved on his forehead.

Enter Inspector Sandra Larsson in her authentic, rustic knitwear. With her own personal life unravelling before our eyes, it is up to her to follow the pattern of a mystery with many holes.

Cast on multi-award winning comedy duo LipService, Maggie Fox and Sue Ryding. Cast off your preconceptions as we weave a web of mystery that will have you in stitches!



## Alison Moyet Royal Concert Hall 27th Oct

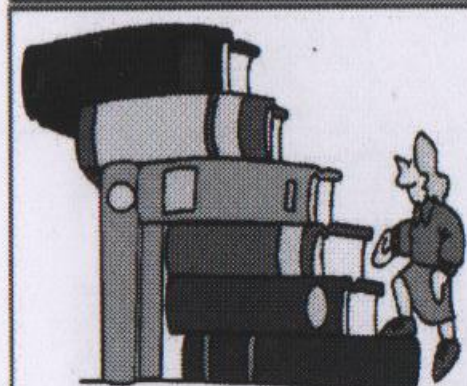
New album *The Minutes* released in May of this year. The iconic voice in the 1980s synth-pop duo Yazoo, revives her electronic roots here, merging with an experimental blend of synth sounds that express modernity, technology and introspection. Producer Guy Sigsworth has built brilliant moments into the album's fabric, demanding listeners be armed with good headphones.

**DELICATA**  
14th September @ 9pm  
King William, Milford  
Near Belper

You can send your own reviews, requests for further information, donations, adverts, articles and details of social events (by 7th Nov please) to [lookoutmag@hotmail.com](mailto:lookoutmag@hotmail.com) or to  
Lookout C/o The Women's Centre, 30 Chaucer Street, Nottingham NG1 5LP.



## Sports & Socialising



### Midweek Book Group

Read a set book and then join in with the discussion group

**Meeting at 7:30 Canalhouse Bar**

If you would like to join us please contact the group co-ordinator by joining the yahoo discussion group: from now on please check on the LinkNotts group email facility

28th August- The Hundred-Year-Old Man Who Climbed Out of the Window and Disappeared- Jonas Jonasson

9th October- Pigeon English- Stephen Kelman

27th November- The Clothes on their Backs- Linda Grant

8th January- Bel Canto- Ann Patchett

### Sapphist Writers

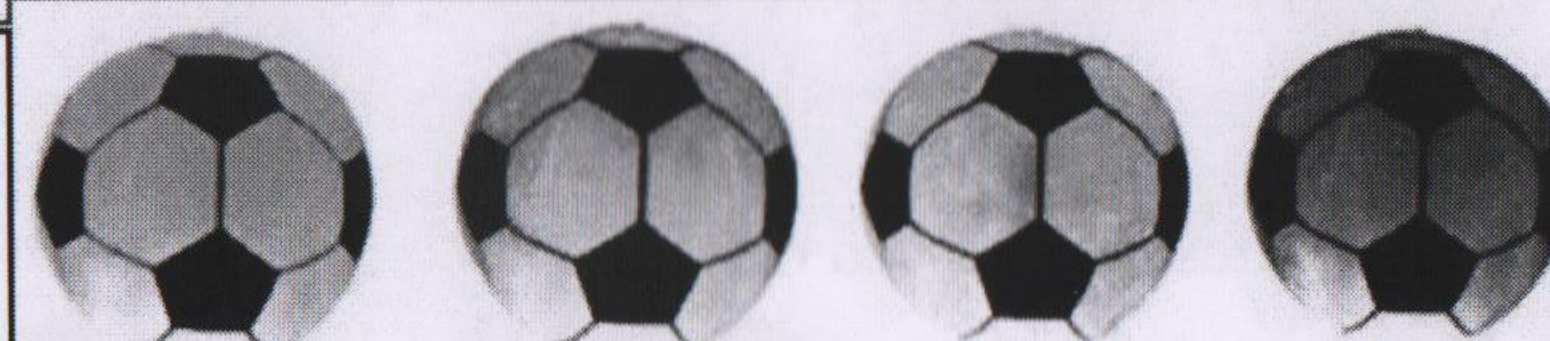
Nottingham Based Women's Writing Network

Meets Second Monday of Every Month, 7.15pm  
For more info email [sapphistwriters@yahoo.co.uk](mailto:sapphistwriters@yahoo.co.uk)  
<http://sapphistwriters.blogspot.com/>

### Lezzie Family Group

**Meet on the second Sunday of the month at Stonebridge city farm**

Talking of football check out the forthcoming tournament on page 5



### Sherwood Ladies 5-a-side footie

Meet every Tuesday 6 - 7 at the Forest Astro Turf (Goose Fair site)  
Suits all levels of fitness & ability, everyone welcome

More info Julie Bennett 07790 998205 or email [joolzy\\_joolz@hotmail.co.uk](mailto:joolzy_joolz@hotmail.co.uk)

### WOMEN'S BADMINTON

PORTLAND LEISURE CENTRE  
Newcomers please check for details



THURSDAY EVENING or possibility of SATURDAY MORNING  
For details of either session contact Ruth or Rachel on 0115 982 6952

## Sunday Walking

**NOTTINGHAM HIKING DYKES** walk 3rd Sunday of the month at 10:30.

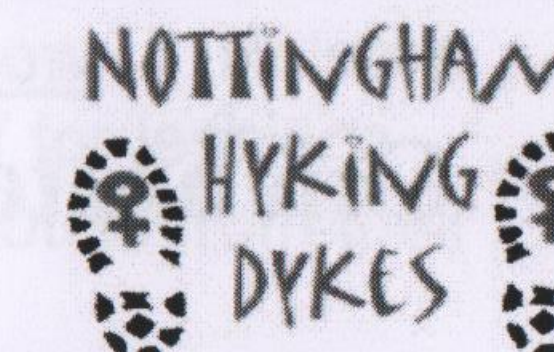
See the brilliant new web site at [www.nottinghamhd.org.uk](http://www.nottinghamhd.org.uk)

15th Sept : Youlgreave, meet at Coldwell End car park, not free but cheap. 7 mile walk

For full details of the various walks and camping events please make contact direct with the group

or [www.peakhd.webs.com](http://www.peakhd.webs.com) or ring Lesbian and Gay Switchboard 0115 9348485

Future dates 17 Nov, 15 Dec, 19 Jan, 16 Feb, 16 March.....walk leaders wanted. Contact Notts HDs direct



### Derby Walking Women

Walks are normally on the 1st Sunday of the month, meet at 10:45 for 11:00 start, each walk is organised by volunteer(s) and full details are given out on the walk the month before or check out the website <http://www.derbywomenswalkinggroup.webs.com>

**Sun 1st Sept**

**Hathersage meet at the car park Oddfellows Road S32 1BN for a 5 mile walk**

Loads of interesting things to see on the way with picnic lunch at a very gruesome spot

Afterwards we'll go to a pub or coffee shop depending on general consensus.

Details can also be obtained by contacting the overall co-ordinators on 07786 803455 (or an email can be sent on to them via [lookoutmag@hotmail.com](mailto:lookoutmag@hotmail.com))



### North Nottinghamshire Walking Group

The group is not able to do regular walks at the moment but make contact direct to find out the latest.

Phone Julia 07961 847091 or email [nnwalkers@yahoo.co.uk](mailto:nnwalkers@yahoo.co.uk) for more details.

**SHEFFIELD HIKING DYKES** All Sunday walks start at 10:30 unless otherwise stated. Contact the group direct for details of locations and other walks. A full & varied programme of walks throughout the year. Check out their website <http://hikingdykes.webs.com/sheffield/> or phone Deena on 0114 268 6409 or Sandra on 01226 767179 or email [sheffield-hd@hotmail.com](mailto:sheffield-hd@hotmail.com)

**Peak Ruffy walks:** These walks are for women who like walking longer and faster and over more challenging ground. Hikes are usually about 10 to 14 miles in the Peak District on the last Saturday of the month.

Information about forthcoming walks is posted to members of the peakruffies yahoo group. You can join this group by emailing: [peakruffies-subscribe@yahoo.co.uk](mailto:peakruffies-subscribe@yahoo.co.uk)

<http://peakhd.webs.com/walks.htm> ALL the walking group dates in calendar format

## Almost like walking.....FOOTBALL

### Football v Homophobia Tournament

University of Nottingham Sports Centre  
University Park

**Saturday 7<sup>th</sup> September**

Teams are 6 aside with unlimited subs and the player fee is £5 per player. There is a male and female tournament as due to FA rules, we cannot accept mixed teams. England Women's football captain Casey Stoney will be joining us at the event as our guest. For more information or to book a team, please email [lgbtq-staff-network@nottingham.ac.uk](mailto:lgbtq-staff-network@nottingham.ac.uk).

**See You Next Tuesday!**  
for girls who like girls

**NEW VENUE**

**meet. chat. laugh.**

Every Tuesday 8pm  
Broadway Media Centre

[facebook.com/syntgirls](https://www.facebook.com/syntgirls)  
[syntgirls@hotmail.co.uk](mailto:syntgirls@hotmail.co.uk)



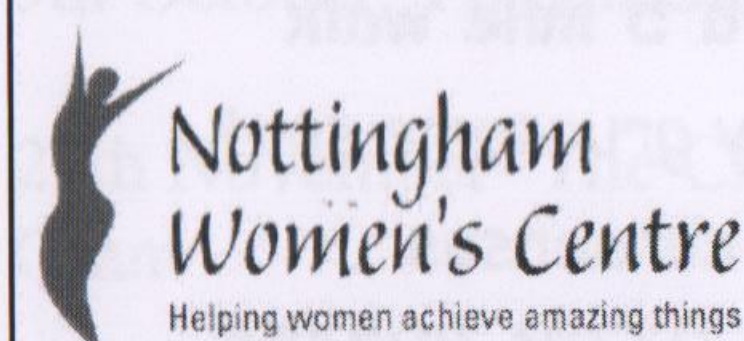
## INTERESTING STUFF

### Nottingham Women's History Group Celebrate, promote and research the contribution of women to Nottingham's history

We run a series of talks, walks, visits – why no join us – open to all who have an interest in women's history  
Next talk Saturday, 28th September 2013, 2pm - 4pm at the ICC, Mansfield Road, Talk on Children of the Croft, based on research into the 1960's project for unmarried mothers.

For further information contact  
Nottingham Women's History Group

[www.nottinghamwomenshistory.org.uk](http://www.nottinghamwomenshistory.org.uk)  
[nottmwomenshistory@gmail.com](mailto:nottmwomenshistory@gmail.com)  
Tel Mo 07950 472022



### Lesbian/Bisexual Women's Cafe

Second Monday of each month 5:30 - 7:30 meet in a relaxed atmosphere & catch up with old friends, meet new people. Food & non-alcoholic drinks available for small donation.  
Newcomers always made welcome.

Thanks to everyone who's already given feedback about the Community Stage at Pride - some helpful comments about possible improvements, and I'm glad to hear that people mostly enjoyed it :-). All very useful to feed back to Pride, and for our own discussions of how it went.

If anyone else wants to chip in with your thoughts before then, you still can and it would be much appreciated.

The survey link:  
<http://www.surveymonkey.com/s/JVLWJJR>

### THE Lesbian Music & Arts Festival



Lfest was fab.....be amazing if we could all go next year....the entertainment was brill. Dance classes, meditation, discos, karaoke, Claire Summerskill's cabaret show, etc.....brill weekend....oh & Delicata too

Hi lovely Notts Link women. We are organising another great benefit night for the women of the East Midlands to support the Million Women Rise campaign to end violence to women and girls. We have a brilliant line up including Julie Felix a true blast from the past and still in fine voice at 75! She has been headlining for more years than I care to remember and has an amazing stage presence. Natalie Duncan is a rising star with a beautiful voice. She recently appeared on Later with Jools. As usual we have the DJs from Juice to keep you dancing all evening, Pam Burrows will entertain you all between sets and the glittery raffle vendors will be coaxing the last pennies out of your pockets for this very good cause and some exciting prizes. Be there at 8 so you don't miss a minute.

### Lezzie Family Group

We still meet on the second Sunday of the month, not sure when next date is this time. We meet about noon at the Stonebridge City Farm. Its a smallish group, usually just a few mums/grannies and their kids who tend to be from new born to about 10 now. We are open to suggestions about meeting someplace else if that's what women want. The farm is free (tho donations are always welcome), there is a cafe selling hot and cold food, a small play area, animals to feed, a fruit and veg garden and plant/veg sales. Women can ring Judi on 07888657916 if they want before they come or just turn up.

## HELP & SUPPORT — this hasn't been updated for a while

### Nottingham Rape Crisis Centre

If you have been sexually assaulted and need help, information, or someone to talk to phone 0115 941 0440. Confidential, free and independent.  
Run by women for women

**Outburst!** Is an LGBT group for young people aged 11 to 25. Meet at NGY Myplace every Wednesday from 6:00 to 8pm.

Contact details  
[Info@outburst.org.uk](mailto:Info@outburst.org.uk)  
0115 952 5040

### Nottingham Police LGBT Consultation Group.

Meets every 3 months (usually at the Adams Building in the Lace Market). Representatives from local lesbian/bi groups are welcome. Details via Switchboard or the GAI Project.

**Broken Rainbow** Helpline 020 8539 9507 for lesbians experiencing abuse from their partner.

**FLAME** (Lesbians with ME group) Support & social group for lesbians with ME (Chronic Fatigue Syndrome) contact Self Help Team, Ormiston House, 32-36 Pelham St. 0115 911 1661 or Morag on 0115 847 1544 or email: [morag@ntlworld.com](mailto:morag@ntlworld.com) or [nottslesbiancentre@ntlworld.com](mailto:nottslesbiancentre@ntlworld.com)

### Relate Nottinghamshire

The Relate counselling service is available to all adult couples experiencing problems in their central relationship, including gay and lesbian couples. Tel: 0115 950 7836.

Services include Family Counselling, SexTherapy, Relationship Education and training courses

### Nottingham LGBT Consultation Forum

(formerly Notts LGBT Community Voice)  
(and before that the LGB Forum)

meets every 3 months, and can be contacted via Switchboard (0115 934 8485),  
the GAI Project (0115 947 6868) or the City Council

### Tipping the Velvet

Advice for women who have sex with women. Advice & help with sexual health, drug use, domestic violence, etc. Service is free & open to women of all ages. For more info contact Donna. The Health Shop, 12 Broad Street, Hockley, Nottingham NG1 3AL or 0115 947 5414 or [healthshop@nottinghamcity-pct.nhs.uk](mailto:healthshop@nottinghamcity-pct.nhs.uk)

### Nottingham & Nottinghamshire Lesbian & Gay Switchboard

Confidential info, advice & support from trained volunteers.

C/o VAC, 7 Mansfield Road, Nottingham NG1 3FB or e-mail [notts@lgswitchboard.fsnet.co.uk](mailto:notts@lgswitchboard.fsnet.co.uk)

0115 934 8485 or 01623 621 515 Mon - Fri 7.00 - 9:30 pm

### Domestic violence within Lesbian and Bisexual relationships

**Roshni Community Outreach service for ALL women**

**0115 988 1414**

Monday to Thursday: 9-5 pm

Friday: 9-4.30 pm

**Broken Rainbow helpline**

**08452 60 44 60**

Monday: 2 - 8pm Wednesday: 10 - 1pm Thursday: 2 - 8pm

**Every Thursday Evening 6:30-7:30pm**

At Self Help Nottingham  
2nd Floor, Ormiston House  
32-36 Pelham Street  
Nottingham NG1 2EG

For more details contact the Self Help Nottingham Information Line on 0115 911 1661 (9am-1pm Mon-Fri) or email [info@selfhelp.org.uk](mailto:info@selfhelp.org.uk)

This group is supported by The Recovery Network at Self Help Nottingham. For more information about finding, joining or starting a self help group contact: 0115 911 1662 [therecoverynetwork@selfhelp.org.uk](mailto:therecoverynetwork@selfhelp.org.uk)



**We can help you break free**  
Confidential help - 24 hours a day  
7 days a week, 365 days a year  
Freephone **0808 800 0340**  
Textphone **0808 800 0341**  
Office **0115 947 5257**  
[www.wais.org.uk](http://www.wais.org.uk)