



Are you suffering from a relationship breakdown?

FREE 1/2 HOUR INTERVIEW

Civil Partnerships/Separation/Contact & Residence of Children,
Property & Financial Issues upon Separation, Domestic Abuse

- Legal Aid Available
- Low Hourly Fees

Contact: Daniel Priest, Partner
Freephone: 0800 1071 208
admin@campions.co.uk

LOW FEE CONVEYANCING

- 1st Time Buyers Discount
- Free Online Quotes
- Fixed Fees - No Hidden Extras

Low
Cost
EPCs

Freephone: 0800 1071 207
admin@campions.co.uk

www.campionssolicitors.co.uk

45-49 Mansfield Road, Nottingham, NG1 3FH
(Nr. Victoria Centre)

FREE CAR PARKING

Regulated by The Solicitors Regulation Authority
Written Quotations Available on Request



resolution
first for family law

Community
Legal Service



LOOKOUT

Dec 2013 Jan Feb 2014

Issue 69

Editorial:

Firstly, Season's Greeting to everyone. Traditionally a time of goodwill to all & o yes, office Xmas parties. Personally, I'm much more looking forward to the Melbourne Xmas Disco.

Some extra pages in this issue's electronic version so please read right to the end. Briefly we have,
Xmas Craft Fair, St Ann with Emmanuel Church, Robin Hood Chase NG3 4EV Sat 30th November
Xmas Craft Nights, Hopkinsons, Station Road, NG2 3AJ on 3 floors 6-9:30 27th Nov & 11th Dec
Delicata live gig as part of benefit night at the Blessington Carriage in Derby 30th Nov

ELBOW - every lesbian & bi-sexual older women's group (for details ring 01332367848)

Details of a Sunday Tea Dance for World Aids Day at County Hall in Matlock 1st December 3-7pm

News from the Nottingham Women's Centre

Nottingham Women's Centre has a busy Christmas period ahead - here are the highlights:

- Thursday 5th December - our AGM (from 5.30pm) - do come along and join us to hear about some of our successes and our plans for next year
- Monday 9th December - Lesbian/bi women's cafe evening (5.30pm - 7.30pm) - a relaxed evening with festive food to share
- Tuesday 10th December - Course Information Day (10am - 2pm) - we've got plenty of courses planned for the New Year so come along and find out more
- Tuesday 24th December - Christmas Eve soup kitchen (10am - 3pm) - our last open day before Christmas. We'll be offering hot food, clothes, children's activities, a Christmas survival guide and some small gifts, plus nail painting, entertainment and other things to help to add some festive cheer.

We're closed from 25th December and reopen on the 2nd January. The first Lesbian/bi-women's cafe evening is Monday 13th January - get in touch if you've got any ideas for a special event or if you would like to be the chef for the evening!

Other news from the Centre -

RENEW - our new mental health project - has just begun. This will allow us to offer more counselling, group support and other therapeutic activities.

WoLAN - our women's history project - is coming to an end in 2014. Look out for lots of activity from the project in the New Year including an exhibition running at Nottingham Angel Row Library throughout March.

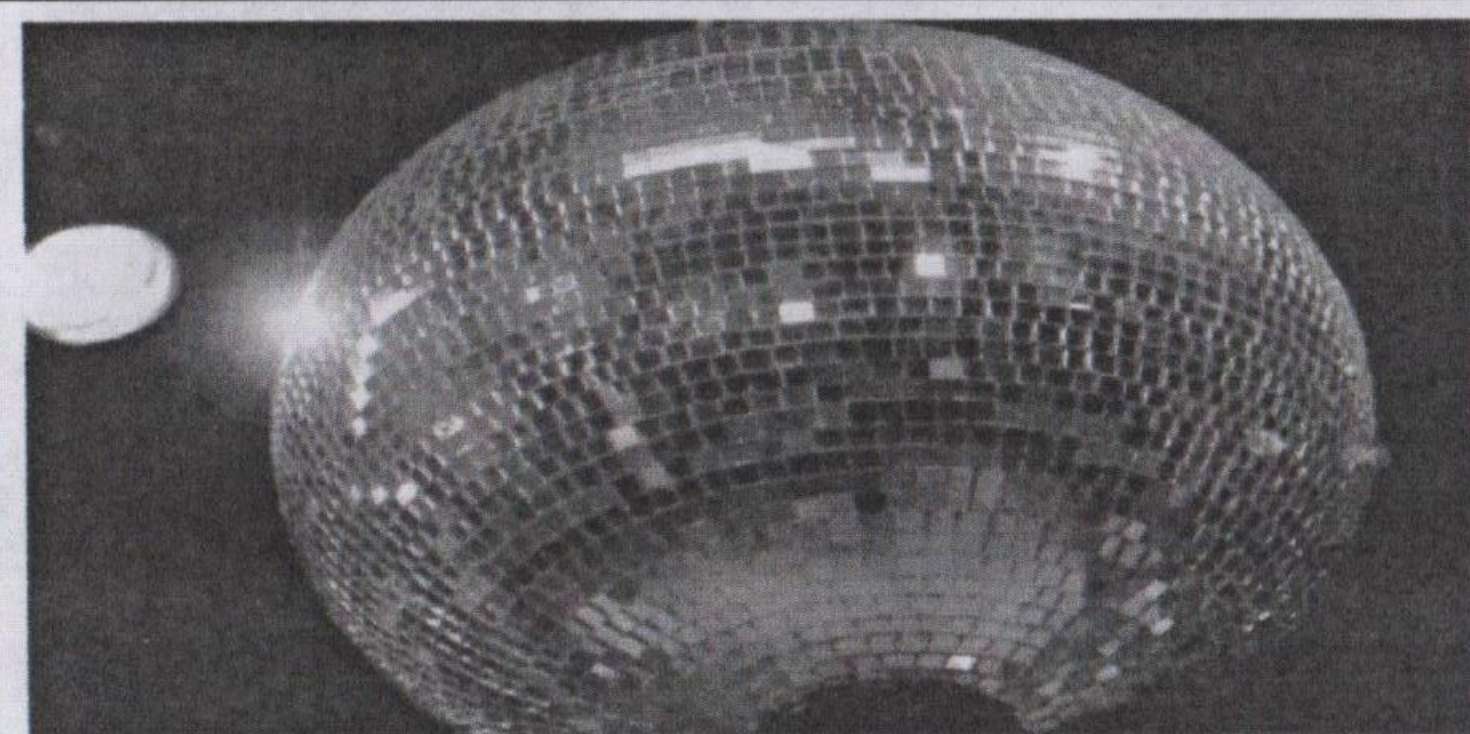
For more information on any of the above contact:

Nottingham Women's Centre, 30 Chaucer Street, Nottingham, NG1 5LP

Tel: 0115 941 1475, E-mail: admin@nottinghamwomenscentre.com or visit: www.nottinghamwomenscentre.com

LOOKOUT! Is sponsored by CAMPIONS SOLICITORS

WOMEN'S REGULAR EVENTS & SPECIAL ACTIVITIES



Belper Women's Disco

Those of you who turned out for the last ever Belper disco will know that you all helped to give it a great send off.

Word on the grapevine is that interest has been expressed in taking it over.

As the saying goes

Watch this space!

Million Women Rise

What a great night we had on 5th October at the Polish Centre with Julie Felix and Natalie Duncan ...and we raised over £600.

The next gig is Saturday 8th February 2014 - starring the Very Good Country and Western Band and Da Mama Toukas.

The 2014 Million Women Rise march is on Saturday 8th March in London - coaches will be going from Nottingham Womens Centre where you can get your tickets nearer the time. Find us on facebook at East Midlands Million Women Rise



JUICE

**WAGED: £5
UNWAGED: £3**

**SATURDAY:
15TH APRIL
11TH SEPTEMBER
7TH DECEMBER
8PM-1AM**

**FREE PARKING
ACCESSIBLE**

**FEDERATION CLUB CLAREMONT ROAD
NOTTINGHAM NG5 1BH**
(between Sherwood Rise and Hucknall Road)
For more info email:
juicenottingham@yahoo.co.uk or
join Facebook: [juicenottingham](https://www.facebook.com/juicenottingham)

Back by popular demand

THE ONE & ONLY Melbourne Xmas Disco

Saturday

14th December

£5 on the door

(includes free raffle ticket wrapped prize donations welcome)

Friendly bar staff. Party atmosphere.



ODDS & ENDS

BITS & BOBS

Nottinghamshire's Rainbow Heritage

The Nottinghamshire's Rainbow Heritage annual celebration and awards evening will be on Tuesday February 25th 7-9 pm in the ballroom at the Council House. As usual there will be free food and drink. This year's awards will be going to the E.on LGBT Network, Re-creation Trans group and Tagadere, the HIV support service. We expect displays/stalls from the awardees as well as Nottinghamshire Healthcare NHS Trust, Notts Police, Lesbian & Gay Switchboard and Rainbow Heritage's own displays. All welcome.

Cancer Awareness

Nottingham University Hospitals are running a project in partnership with Stonewall trying to gain feedback from lesbian, gay, bisexual and trans people about their awareness of cancer symptoms, seeking help and advice, and any experiences of cancer services. This survey is for all LGBT people: those with and without cancer. The survey will be entirely anonymous and will help them improve their services for LGBT people.

Please use the link to find out more and access the survey.

<https://www.nuh.nhs.uk/working-with-us/equality-and-diversity/health-champions-programme>



Nottingham Women's History Group

Celebrate, promote and research the contribution of women to Nottingham's history

For further information contact
Nottingham Women's History Group

www.nottinghamwomenshistory.org.uk
nottmwomenshistory@gmail.com

Tel Mo 07950 472022

MORRIGAN LESBIAN HOUSING CO-OP

Morrigan has a vacancy in a lovely unfurnished (white goods provided) two bedroom terraced house in Nottingham. Accessible to shops and the tram. A great chance to be part of the co-operative and have control over your own housing.

For more information and to download an application form go to:
morrigancoop.wordpress.com or contact us at::

morrigancoop@aol.com.
Phone 01159422229.

QT-Notts Needs YOU!

Please help us make the new QT Notts email group a success

QT-Notts is a community-based noticeboard. The more members, the better it gets.

For anyone in the queer community to organise, publicise or just stay in touch.

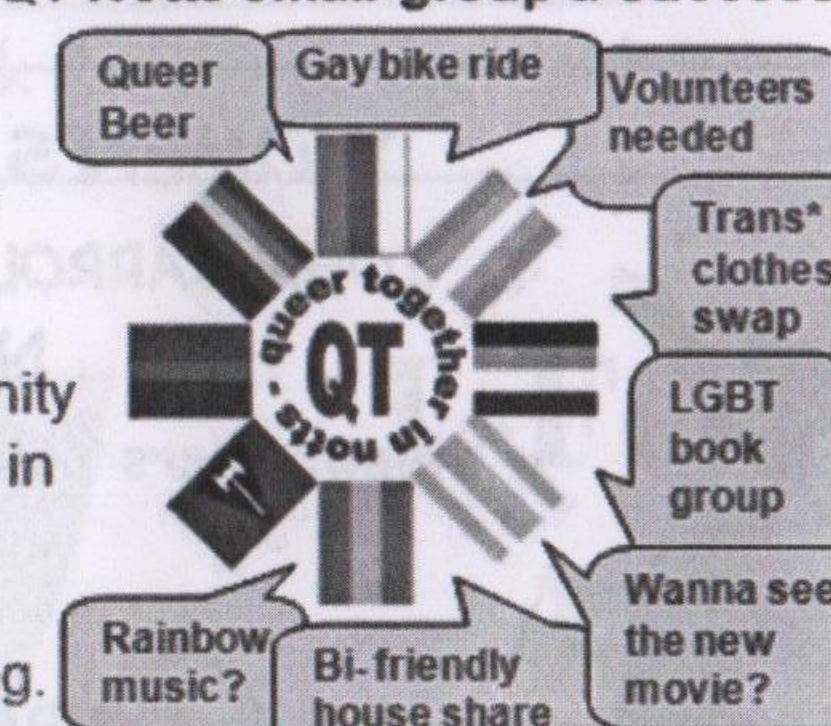
YOU can make QT-Notts amazing.

How? By joining, posting and publicising the group

Why should I help? If everyone lays just one brick, we can build something fabulous. If you don't believe us, ask the 500 women who joined the sister group, Link-Notts!

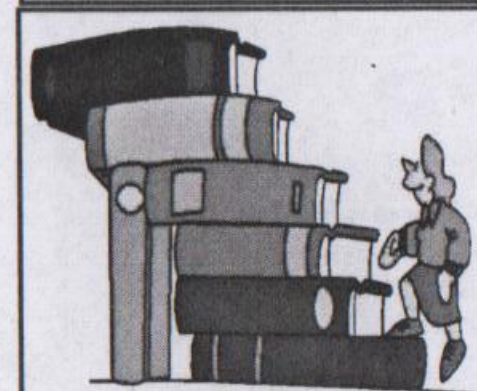
Run for love not profit by experienced moderators; keeping your inbox free of chat, spam, and email overdose.

Sign up today! <http://uk.groups.yahoo.com/group/qtnotts/>



You can send your own reviews, requests for further information, donations, adverts, articles and details of social events (by 7th Feb please) to lookoutmag@hotmail.com or to
Lookout C/o The Women's Centre, 30 Chaucer Street, Nottingham NG1 5LP.

Sports & Socialising



Midweek Book Group

Read a set book and then join in
with the discussion group
Meeting at 7:30 Canalhouse Bar

If you would like to join us please contact the group
co-ordinator by joining the yahoo discussion group:
from now on please check on the
LinkNotts group email facility

8th January- Bel Canto- Ann Patchett

Lesbians in Nottingham konnected:

An online community/ email group in
Nottinghamshire
for lesbians to keep in touch and informed
<http://groups.yahoo.com/group/linknotts>

New social group for lesbians
to be held at
The Women's Centre
see page 5 for details

**See You
Next
Tuesday!**
for girls who like girls

NEW VENUE

meet. chat. laugh.

Every Tuesday 8pm
Lord Roberts
24 Broad St, Nottingham
syntgirls@hotmail.co.uk
and syntgirls on facebook

Sapphist Writers

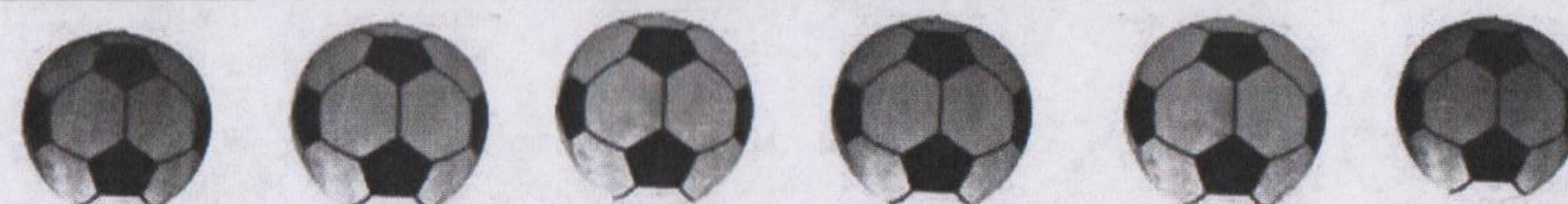
Nottingham Based Women's
Writing Network

Meets Second Monday of Every Month, 7.15pm
For more info email sapphistwriters@yahoo.co.uk
<http://sapphistwriters.blogspot.com/>

Lezzie Family Group

Meet on the second Sunday of the
month at Stonebridge city farm

Sherwood Ladies 5-a-side footie



Meet every Tuesday 6 - 7 at the
Forest Astro Turf (Goose Fair site)
Suits all levels of fitness & ability,
everyone welcome

More info Julie Bennett 07790 998205
or email joolzy_joolz@hotmail.co.uk

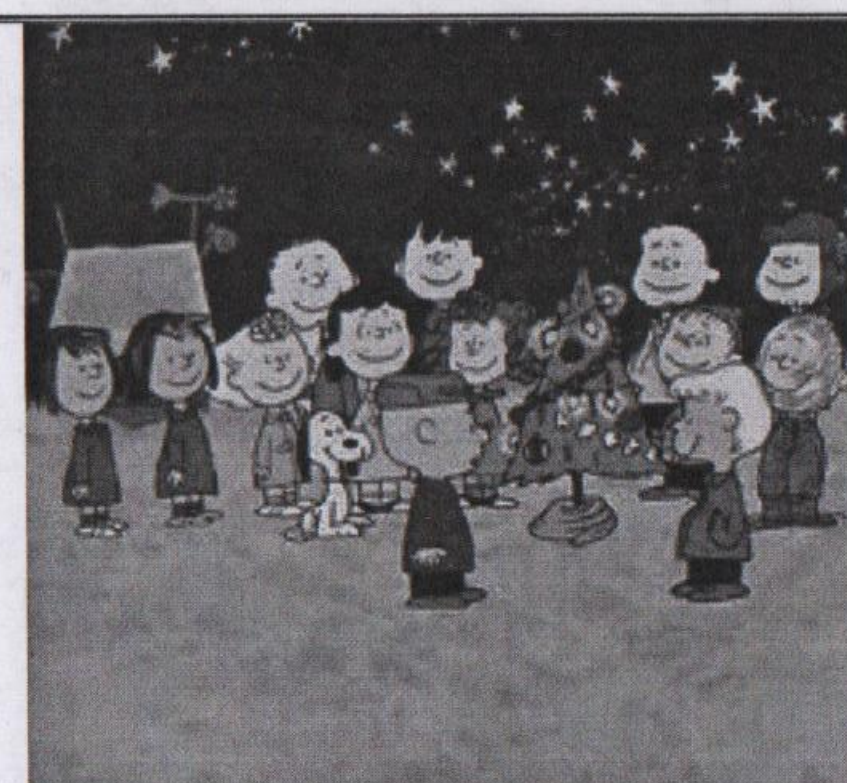
WOMEN'S BADMINTON

JOHN CARROLL LEISURE CENTRE
NG7 3PS

Newcomers please check for details



THURSDAY EVENINGS at 8
For confirmation of sessions contact
Ruth or Rachel on 0115 982 6952



Walking Groups & other bits

NOTTINGHAM HIKING DYKES

walk 3rd Sunday of the month at 10:30.

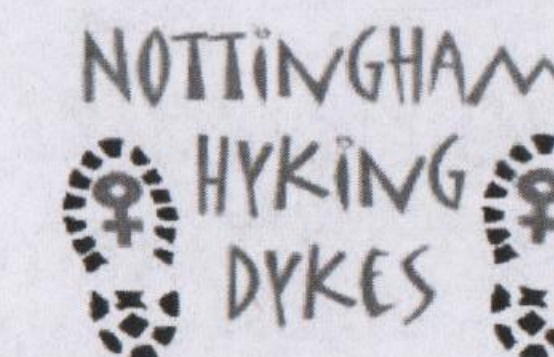
See the brilliant new web site at www.nottinghamhd.org.uk

15th Dec : meet at Staunton Harold estate car park, £2 for a 6 mile walk

For full details of the various walks and camping events please make contact direct with the group

via www.nottinghamhd.org.uk or ring Lesbian and Gay Switchboard 0115 9348485

Future dates 17 Nov, 15 Dec, 19 Jan, 16 Feb, 16 March.....walk leaders wanted. Contact Notts HDs direct



Derby Walking Women

Walks are normally on the 1st Sunday of the month, meet at 10:45 for 11:00 start, each
walk is organised by volunteer(s) and full details are given out on the walk the month before
or check out the website <http://www.derbywomenswalkinggroup.webs.com>

Sun 1st Dec

meet in the layby on Firestone after Farnah Green DE56 4AF for a 5 mile walk

Walk along the Chevin & return along Ecclesbourne valley (with an ascent of 500 feet)

Lunch stop mid way round & choice of pubs afterwards

Details can also be obtained by contacting the overall co-ordinator on 07757 266651
(or an email can be sent on to her via lookoutmag@hotmail.com)



SHEFFIELD HIKING DYKES All Sunday walks start at 10:30 unless otherwise stated. Contact the group
direct for details of locations and other walks. A full & varied programme of walks throughout the year. Check
out their website <http://hikingdykes.webs.com/sheffield/> or phone Deena on 0114 268 6409 or Sandra on
01226 767179 or email sheffield-hd@hotmail.com

Peak Rufty walks: These walks are for women who like walking longer & faster & over more challenging
ground. Hikes are usually about 10 to 14 miles in the Peak District on the last Saturday of the month.

Information about forthcoming walks is posted to members of the peakrufties yahoo group. You can join this
group by emailing: peakrufties-subscribe@yahoo.com

<http://peakhd.webs.com/walks.htm> ALL the walking group dates in calendar format
(I could only see Peak Rufties & Sheffield & Nottingham Hiking Dykes on this web site)



L Fest - THE Lesbian Music Arts & Comedy Festival

July 18-21st 2014

Lezzie Family Group

We still meet on the second Sunday of the month, not sure when next date is this time. We meet about noon
at the Stonebridge City Farm. Its a smallish group, usually just a few mums/grannies and their kids who tend
to be from new born to about 10 now. We are open to suggestions about meeting someplace else if that's
what women want. The farm is free (tho donations are always welcome), there is a cafe selling hot and cold
food, a small play area, animals to feed, a fruit and veg garden and plant/veg sales. Women can ring Judi on
07888657916 if they want before they come or just turn up.

INTERESTING STUFF



Lesbian/Bisexual Women's Cafe

Second Monday of each month 5:30 - 7:30 meet in a relaxed atmosphere & catch up with old friends, meet new people. Food & non-alcoholic drinks available for small donation. Newcomers always made welcome.

Also at the Women's Centre

Lesbians in Nottingham

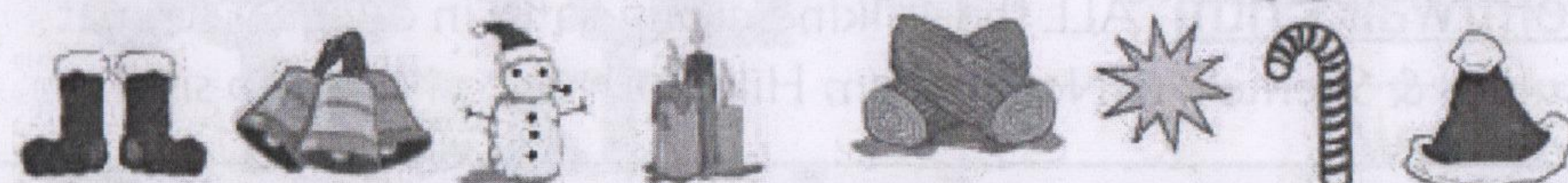
Meet every 2nd & 4th Friday of the month
Come and join us to chat, play board games and have a laugh.
All lesbians welcome, or those questioning whether they might be lesbian.
For more info ring Ruth 0115 982 6952

Discombobulated Me

Subscribers to LinkNotts will be aware that the above invitation to this seemingly innocently intentioned new group sparked a mini debate. Somewhere along the line it was clarified that women who self identify as bi sexual would not be so welcome.

Some comments received on this exclusion, whilst not representative, have expressed surprise. It would appear to beggar belief in these more enlightened times that, in the context of playing board games and having a laugh, it actually matters what particular label women self identify with. Labelling seems to be a pertinent subject at the moment. So, in light of recent interest in varied gender issues there's an article entitled "What it means to be transgender" on page 12 of the e-version of this issue of Lookout.

Apologies to those who rely on a paper copy — Lookout has always been touch & go on the financial side of things so extra printed pages are not really an option. Relying as it does on the continued support of Champions Solicitors, a few regular donations and the occasional paid for advert, paper & postage has to be used sparingly. Thank goodness for a free internet.



Looking for a new look this coming New Year ?

"Routine property maintenance or a complete makeover? Based in the Nottingham area 'Mode Interiors' can help. Fully insured we are an all female organisation offering: Realistic and fair prices and 20 years of experience in painting and decorating; Free advice and no obligation quotes; Undertaking most work including painting, wall papering, de-cluttering, life laundry, curtain and blind making.

Everyone enjoys a pleasant home environment. A well organised room can mean less time spent on chores and more time to relax. Likewise a freshly decorated house in the rental market will not go empty for long and is more likely to attract responsible tenants.

Sometimes we are just too busy to make this happen for ourselves. Mode Interiors have extensive experience in renovating properties and have worked for a wide range of clients. Our 'Creative Solutions To Suit Your Budget' and 'Tidy As We Go' working practices aim to cause as little disruption as possible and make sure the customer knows costs upfront. We are a budget friendly company."

For advice or to arrange a quote contact (07941) 150030 or (07914) 714440 We can be e-mailed at enquiries@modeinteriors.org.uk

References supplied on request.

HELP & SUPPORT — newly updated thanks to Joan

Confidential info, advice & support from trained volunteers.

C/o VAC, 7 Mansfield Road, Nottingham NG1 3FB or e-mail notts@lgswitchboard.fsnet.co.uk

0115 934 8485 or 01623 621 515 Mon - Fri 7.00 - 9:30 pm

Email : notts@lgswitchboard.fsnet.co.uk

Website: www.nottslgs.org.uk

Nottingham Rape Crisis Centre

phone 0115 941 0440.
Confidential, free and independent.
Run by women for women
www.nottinghamrapecrisis.org.uk

Outburst!

Is an LGBT group for young people aged 12 to 25.
Meet at NGY Myplace every Wednesday from 6:00 to 8pm.
Contact details
www.outburst.org.uk
0115 704 3114

Nottingham Police LGBT Consultation Group.

Meets every 3 months (usually at the Adams Building in the Lace Market). Representatives from local lesbian/bi groups are welcome.
Details via Switchboard

Relate Nottinghamshire

The Relate counselling service is available to all adult couples experiencing problems in their central relationship, including gay and lesbian couples. Tel: 0115 950 7836.

Services include Family Counselling, SexTherapy, Relationship Education and training courses

www.relate-nottingham.org.uk

Nottingham City Council LGBT Consultation Forum

(formerly Notts LGBT Community Voice)
(and before that the LGB Forum)

meets every 3 months, and can be contacted via Switchboard (0115 934 8485),

0115 915 7244).

Advice & help with sexual health, drug use, domestic violence, etc. for people of all gender identities.
12 Broad Street, Hockley, Nottingham NG1 3AL or 0115 947 5414 or
email HealthShop@nottshc.nhs.uk

Broken Rainbow National LGBT Domestic Violence helpline

0300 999 5428

Opening times Mon & Thur: 10am - 8pm Tue & Wed: 10am - 5pm (1pm - 5pm Tue is Trans specific)
www.brokenrainbow.org.uk

Derbyshire Friend LGBT Specialist Support & Advocacy Service

<http://www.gayderbyshire.org.uk> Tel: 01332 207704

email: info@gayderbyshire.org.uk

Leicester LGBT Helpline 0116 255 0667 Thursdays 7:30—10pm

Leicester & Rutland LGBT info & services - Leicester LGBT Centre
<http://leicesterlgbtcentre.org/>

Women's Aid Integrated Services



We can help you break free

Confidential help - 24 hours a day

7 days a week, 365 days a year

Freephone 0808 800 0340

Textphone 0808 800 0341

Office 0115 947 5257

www.wais.org.uk

Notts LGBT Alcohol Support

Are you...

gay, lesbian, bisexual or transgendered?

Do you think you have a problem with your drinking?
Have you recently had a problem with your drinking?
Would you like support from people who have had similar problems?

Notts LGBT Alcohol Support is a group offering support to lesbian, gay, bisexual and transgender people to discuss issues around alcohol

We meet on the first Tuesday of the month from 6.30 to 7.30pm
@ NHS Nottingham Health Centre
79a Upper Parliament Street, Nottingham NG1 6LD

Phone: 07526 670757 | email: info@nottslgbalcoholsupport.org
www.nottslgbalcoholsupport.org