

5p.

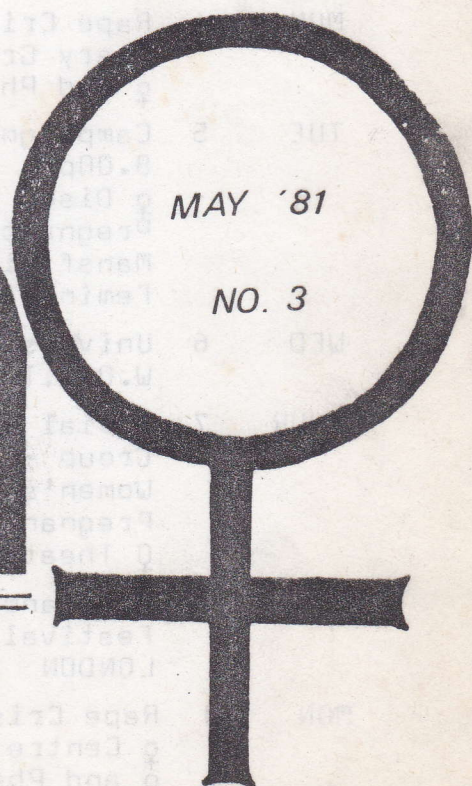
# nottingham women's diary

**inside**  
meetings  
contact nos.  
information  
on groups



MAY '81

NO. 3





# WOMEN'S CENTRE

32a SHAKESPEARE STREET

NOTTINGHAM

Telephone 411475

## diary

### APRIL

- MON 27 ♀ Centre Discussion Group 8.00pm  
♀ and Photography 11.00-3.00 at The Building  
Rape Crisis Group (see contacts)
- TUE 28 ♀ Disco 8.00pm Hearty Goodfellow  
Pregnancy Testing Meeting 8.00pm ♀ Centre  
Pregnancy Testing 6.00-8.00pm  
Mansfield Health Group 7.00pm 49 West Hill Drive  
I.C.C. Women from Nicaragua talking about the  
situation there. Slide show. Waged 50p non-waged 20p
- WED 29 W.O.N.T. 8.00pm ♀ Centre  
♀ Theatre Group Queen's Walk Community Centre 8.00pm
- THUR 30 Pregnancy Testing (Bulwell) 5.00-7.00 The Family Centre  
50 Langclose Court Crabtree Farm  
Finance Group 7.00 ♀ Centre  
♀ Festival meeting " 8.00pm  
Open Door 1.00pm ♀ Centre

### MAY

- FRI 1 May Day Ceilidh - 'Patti O'Doors & the Sunloungers.  
Queen's Walk Community Centre (Meadows) - Mixed
- SAT 2 Pregnancy Testing 10.00 - 12.00 ♀ Centre
- MON 4 Rape Crisis Group  
Diary Group 8.00pm 2 Alpha Terrace  
♀ and Photography 11.00am Arts & Crafts Centre
- TUE 5 Campaign to press for Early Pregnancy Tests within NHS  
8.00pm ♀ Centre  
♀ Disco 8.00pm Hearty Goodfellow  
Pregnancy Testing 6.00 - 8.00pm  
Mansfield Health Group 7.00pm 49 Westhill Drive  
Feminist Cinema Midland Group (see sheet)
- WED 6 University ♀ Group 'My Brilliant Career' film  
W.O.N.T. 8.00pm ♀ Centre
- THUR 7 Social 8.00pm The Yorker 'The History of the Women's  
Group - a brief account'.  
Women's Fightback 7.30pm ♀ Centre  
Pregnancy Testing (Bulwell) 5.00 - 7.00  
♀ Theatre Group 8.00 Queen's Walk Community Centre
- SAT 9 Pregnancy Testing 10.00 - 12.00 ♀ Centre  
Festival for the Rights of Women Against Tory Attacks -  
LONDON
- MON 11 Rape Crisis Group  
♀ Centre Discussion Group 8.00pm ♀ Centre  
♀ and Photography 11.00 The Building  
Trades Council Women's Committee 118 Mansfield Road



- TUE 12 Mansfield Health Group 7.00pm 49 West Hill Drive  
 ♀ Disco 8.00pm Hearty Goodfellow  
 N.A.C. 8.00pm ♀ Centre - 'Future Plans for N.A.C.'
- WED 13 W.O.N.T. 8.00pm ♀ Centre  
 University Women's Group 1.15 N.S.Q.R. Portland Building  
 "Women and Theatre" speaker.
- THUR 14 ♀ Centre Group 8.00pm  
 Pregnancy Testing (Bulwell)  
 Finance Group 7.00 - 8.00 ♀ Centre  
 ♀ Theatre Group Queen's Walk Community Centre  
 Open Door 1.00pm ♀ Centre
- SAT 16 NO PREGNANCY TESTING  
 Women and Health Day 10.00 - 4.30 Cottesmore School
- MON 18 Rape Crisis (see contacts)  
 ♀ and Photography 11.00 - 3.00 The Building  
 Diary Group 8.00 2 Alpha Terrace
- TUE 19 ♀ Disco 8.00pm Hearty Goodfellow  
 Pregnancy Testing 6.00 - 8.00 ♀ Centre OPEN MEETING 8.00  
 for women who are interested and/or want to join the group  
 Feminist Cinema 7.30pm Midland Group see info
- WED 20 W.O.N.T. 8.00pm ♀ Centre  
 University ♀ Group 1.15 N.S.Q.R. Portland Building
- THUR 21 Women's Fightback 7.30pm ♀ Centre  
 Pregnancy Testing (Bulwell)  
 ♀ Theatre Group Queen's Walk Community Centre 8.00pm  
 ♀ Centre Finance Group 7.00pm to discuss fund raising  
 and decision making for ♀ Centre
- SAT 23 Pregnancy Testing 10.00-12.00 ♀ Centre  
 Women and Manual Trades National Conference Queen's  
 Walk Community Centre - Social featuring 'The Mistakes'
- SUN 24 Women and Manual Trades National Conference
- MON 25 ♀ Centre Discussion Group 8.00pm  
 ♀ and Photography 11.00 - 3.00 The Building  
 Rape Crisis 8.00pm ♀ Centre
- TUE 26 ♀ Disco Hearty Goodfellow  
 Pregnancy Testing ♀ Centre 6.00 - 8.00  
 Mansfield Health Group 7.00 49 West Hill Drive  
 N.A.C. 8.00pm ♀ Centre 'Abortion referral in Nottingham'
- WED 27 W.O.N.T. 8.00pm ♀ Centre  
 University Women's Group 1.15 N.S.Q.R. Portland Building
- THUR 28 Pregnancy Testing (Bulwell) 7.00pm Family Centre Crabtree  
 Farm  
 Finance Group 7.00 - 8.00 ♀ Centre  
 ♀ Theatre Group 8.00 Queen's Walk Community Centre  
 Open Door 1.00 ♀ Centre
- SAT 30 ♀ Disco 8.00pm Hearty Goodfellow

♀ DIARY ♀ DIARY ♀ DIARY ♀ DIARY ♀ DIARY ♀ DIARY ♀

P L E A S E SEND US INFORMATION, DATES OF EVENTS ETC FOR JUNE  
 BY MAY 15 AT THE LATEST.

IF WE DON'T KNOW ABOUT IT, WE CAN'T WRITE ABOUT IT !!

REGARDS CHRIS, CHRIS, CAROL & JUDY

♀ DIARY ♀ DIARY ♀ DIARY ♀ DIARY ♀ DIARY ♀ DIARY ♀



# CONTACTS

WOMEN'S CENTRE		411475
DIARY	Chris	410831
	Chris & Carol	45361
RAPE CRISIS CENTRE	11 - 5 Mon - Fri	410440
W I R E S		411475
FINANCE GROUP		703628
LESBIAN LINE		410652
DISCO COLLECTIVE	Josie	283416
PREGNANCY TESTING CAMPAIGN	Jane	708302
NOTTINGHAM PREGNANCY TESTING	Mary	583536
BULWELL PREGNANCY TESTING		751710
RADICAL MIDWIVES	Pippa	703396
NATIONAL ABORTION CAMPAIGN	Jane	856816
BIRTH GROUP		606887
MANSFIELD ♀ HEALTH	Jenny c/o 91	27531
♀ AND MEDICAL PRACTICE	Lexie	819166
WOMEN AND FOOD	Dory c/o	411475
W.O.N.T.		411475
FEMINISM AND NON-VIOLENCE	Bee	583536
	(day)	53587
WOMEN'S FIGHTBACK	Ann Crowder	623527
WOMEN'S VOICE	Jen	203088
BIG FLAME	Wendy	207686
NOTTINGHAM WOMEN'S AID		624547
OPEN DOOR	Sue Sycamore	581652
TRADES COUNCIL ♀ COMMITTEE	Gwyn	865904
WOMEN AND MANUAL TRADES	Judy	45361
EAST MIDLAND ♀ & FILM	Carol Jones c/o Midland Group	
WOMEN AND PHOTOGRAPHY	Judy (day)	49016
	Alex	703628
WOMEN'S THEATRE	Irene	862348
	Linda	868125
WOMEN AND WRITING	Judy	703628
	Jacky	583536
BISEXUAL WOMEN'S GROUP	♀ Centre	411475



## SOCIAL

We apologise for any inconvenience caused when last month's social was cancelled at the last moment. This was caused by domestic problems of the landlord. The talk planned for last month will now be given in May. If anyone would like to give a brief talk in June, please contact Chris 410831



## DISCO'S

We are very unhappy about the poor attendance at the Saturday night monthly social. The money finances the Women's Centre. If attendance continues to be poor we will lose the room and groups will have to pay much higher rents.

Secondly, the next Saturday social on 25 April will be in aid of the fines incurred for the Maw sisters spray painting.

Thirdly, on Tuesday 14 April we collected £27.48½ door money and donations for the lesbian women arrested at the National Conference in London last weekend.

## COMMUNITY FESTIVALS

The Rape Crisis Group have been asked by people at Clifton if they would like a 'stall' for information etc at their festival in July. Other local festivals might also be interested. Women from Rape Crisis group have seen 1 or 2 other groups and it was thought a good idea if women involved in groups using the Centre get together to organise something from the Q Centre.

If you are interested please contact : Emma 410440 or  
Carol 45361

## NOTTINGHAM WOMEN'S LIBERATION CONFERENCE

- SATURDAY 20 JUNE

This is intended to be a a chance to discuss the political effectiveness of the Nottingham Women's Group. We hope to discuss the way in which we organise around issues, and the way in which we can establish a united 'public front'. All feminists are welcome to attend and join in.

We would like a wide representation of views and hope that closer links with all active women in Nottingham will come out of the conference. Contact : Chris Jones 410831



## **MANSFIELD WOMEN'S HEALTH**

### **A WELL WOMAN CLINIC FOR MANSFIELD?**

On 18 March, Mansfield Women's Health Group presented to Central Nottinghamshire Community Health Council a document stating its case for a Well Woman Clinic in Mansfield. In it, the women illustrate the value for women, of having several "check-up" facilities under one roof: smear test, breast examination, blood pressure etc and that it is crucial to have women professionals at the clinic, who have plenty of time to listen to women's queries.

Mansfield Women's Health Group also argue that laywomen should be involved in such a clinic, as counsellors, and to set up self-help groups on the menopause, mastectomy etc. They are asking initially for funding for a 1-year pilot project.

The document was enthusiastically received by the CHC (except for 1 male GP!), who have now given it their official backing, and will be pressurising the Area Health Authority and District Management Team to make funds available for the project.

### **WOMEN & MEDICAL PRACTICE**

As a result of the conference of 'Women and Medical Practice', held in Nottingham on 11/12 April W.A.M.P. is now a recognised campaigning group to help women regain control of their own physical and mental health. We are having a further meeting at the Women's Arts Alliance' in London on April 26 for women wishing to become involved in this campaign to discuss future tactics and aims.

There is also a further one day conference in Birmingham on Saturday 30 May (venue to be announced). Would any women wanting further information, or to become involved in the campaign, please contact Women and Medical Practice Group c/o ♀ Centre, 32a Shakespeare Street Nottingham

### **PREGNANCY TESTING CAMPAIGN**

Earlier this year a circular was sent to doctors in the area 'reminding' them that early pregnancy tests were 'unnecessary and frivolous'. Many women are now being told that pregnancy tests are not allowed and have to either pay up to £7 at a chemist or are referred by their doctors to the Women's Centre Testing Group and the one at Bulwell (and presumably some are sent to 'life'). These women have needed to know for serious medical, urgent social or personal reasons. Whilst the women involved in the two groups have no objections, and are very pleased to see these women, they nevertheless object to being used like this by the Health Service. This is in addition to our initial objections to the cuts. It is in every woman's interest to know at an early date if she is pregnant,, should she wish to seek an abortion, if there are medical complications, or quite simply if she wants to take appropriate steps with regard to her health. The campaign group was assured that a counter circular would be sent telling doctors not to be so 'rigorous' in their interpretation. This has not been done. The campaign group now wants to step-up pressure and there will be a meeting on Tuesday 5th May at 8p.m. in the Women's Centre.



# WOMEN'S HEALTH

'DAY CONFERENCE'

15 MAY 1981

Then why is it all over my face?

A Women and Health Day Conference is to be held in Nottingham on Daturday 15 May at Cottesmore School, Derby Road

Cost: Only 50p!

The structure of the day will be :

It's all in the mind

10.00am	Start/Plenary
10.30 - 12.00	Workshops*
12.00 - 1.30pm	Lunch (not provided bring sandwiches)
1.30 - 3.00	Workshops*
3.00 - 3.30	Tea
3.30 - 4.30	Plenary

Creche to be provided

- \* Proposed Workshops -
- Self-examination (practical & discussion)
  - Menopause
  - Ageing
  - Alternative medicine (homeopathy, acupuncture, massage etc)
  - Women and Food (body image, diet)
  - Menstruation & premenstrual tension
  - Pregnancy testing (practical, discussions on abortion, counselling, contraception)
  - Post-natal Depression
  - Vaginal infections
  - Female Sexuality
  - Cancer Breast Screening
  - Practical sessions in Yoga and Self-defence (at lunchtime)
- Plus

IF YOU ARE INTERESTED IN COMING please contact:

Women and Health Day Conference  
Planning Group  
c/o 71 Forest Road East  
Nottingham

Telephone Nottingham 703396

DOCTOR



# National Festival for Women's Rights against Terry Altbach

**DATE: MAY 9th** Starcross School, Islington

Workshops, Wine, Theatre, Music, etc.

Coach leaves Salutation Inn at 8am. and will

return the same evening - please buy tickets to

ensure coach runs - **CONTACT: Ann 623527**

## WOMEN OPPOSED TO NUCLEAR TECHNOLOGY

As there has been quite a lot of interest and confusion about the ♀'s anti-nuclear action that was originally planned for March 1st and then postponed, I'll explain briefly what has been happening. In our meetings with other W.O.N.T. groups it became increasingly clear that we were premature in our plans; we had not yet built up a sufficiently strong network of W.O.N.T. and other feminist anti-nuclear groups for the sort of action we wanted. Though we intended our action to be instrumental in creating a very large ♀'s disarmament movement, without more clarity and planning it was in danger of being an action in a vacuum - a mistake we cannot afford.

It has taken quite a lot of talking to sort through this but we do now seem to have reached a much clearer and stronger basis and at our last meeting in Liverpool we decided on 2 main things:-

- 1 That W.O.N.T. would take initiative in the setting up of a very broadbased Women's Peace Alliance to bring together all ♀ opposed to nuclear weapons.
- 2 To develop and strengthen the feminist anti-nuclear network

We are having a weekend conference, probably in June, primarily to plan for action but also to discuss:

feminist perspectives on nuclear weapons and energy  
non-violence

our position as feminists within a very large and varied ♀ peace movement.

Nottingham W.O.N.T. meets every Wednesday 8.00pm at the ♀ Centre



THE WOMEN AND FILM GROUP MEETS ON ALTERNATE MONDAYS  
AT 7.00 AT THE MIDLAND GROUP. NEXT MEETING MAY 27th.

# FEMINIST CINEMA?

PROGRAMME ONE  
Tuesday 5 May 7.30pm

## OFTEN DURING THE DAY

by Joanna Davis, 15 mins.

'I describe the kitchen both physically and through the activities that take place within it.

'I want to take notice of the small and regular activities that occupy a big proportion of my time.' (Joanna Davis).

## RITUALS OF MEMORY

by Pat Murphy, 15 mins.

RITUALS OF MEMORY is concerned with the relationship between memory and its expression in language and images.

## IRONING

by Lynne Conroy, 15 mins.

A mother reflects while ironing on bringing up her child in conditions of economic hardship.

Programme introduced by Felicity Sparrow.

PROGRAMME TWO  
Tuesday 19 May 7.30pm

## RIPPLE

by Jane Clark, 10 mins.

'My method of working is to go to a location and spend time taking photographs, in this way I absorb what I feel to be the spirit of the place and discover what aspects I want to draw on... it is my intention that the finished film be a recording of what happened and my reaction to it at that specific time in that specific place.' (Jane Clark).

## LIGHT READING

by Liz Rhodes, 20 mins.

A film about identity and explanations: 'it is myself talking to you; just a woman reading her thinking.' (Liz Rhodes)

## SHADOW OF A JOURNEY

by Tina Keane, 20 mins.

Filmed in a journey between the Isle of Harris and the Isle of Skye, SHADOW OF A JOURNEY plays its images of shadow on water against the soundtrack of a woman recalling tales of the Highland Clearances to suggest the fluidity of time, space and memory.

Programme introduced by Jane Clark.

This season of films continues our commitment to showing a broad range of women's films, posing the question as to what a feminist cinema is. This particular set of programmes are all drawn from the catalogue of CIRCLES, a distribution group started by women to bring together and distribute women's work in a variety of media. The programme was chosen by Rachel Finkelstein, a filmmaker working in Nottingham, in conjunction with East Midlands Women in Film, who can be contacted via Carol Jones at the Midland Group (tel 582636).

There is a special season ticket available for this season, price £2.50, which enables the ticket holder to attend all the screenings. For individual screenings, there is a special concessionary rate for all members of East Midlands Women in Film, price 60p.

at The New Cinema, Midland Group,  
Warner Gate, Nottingham.

PROGRAMME THREE  
Tuesday 2 June 7.30pm

## FOCII

by Jeanette Iljohn, 6 mins.

A dance/mime film centering on the relationships between self and self, and self and other.

## WISH YOU WERE HERE / DOG BENEATH THE SKIN

by Jeanette Iljohn, 6 mins.

A highly coloured, sentimental picture postcard of a little girl and a dog forms the basic image of the film, which is concerned to examine the exploitation of human weaknesses in commercial art.

## SLIDES

by Annabel Nicholson, 16 mins.

## RETURNING

by Susan Stein, 15 mins.

'Looking out of the window, seeing a shape. Returning. This shape has stayed with me for a long time now. Being constantly aware of this shape, it takes on a certain character. Familiar view.' (Susan Stein)

## 3 SHORT EPISODES

by Rachel Finkelstein, 10 mins.

The underlying theme to each of the three parts is a 'personal dissatisfaction with the kind of sexual relationships men impose on women.' The continuity of the film is found in the search for a New Female Sexuality. Programme introduced by Jeanette Iljohn.

PROGRAMME FOUR - VIDEO  
Tuesday 16 June 7.30pm

## MAN MADE IMAGES

by Rachel Finkelstein, 20 mins.

## PLAYPEN

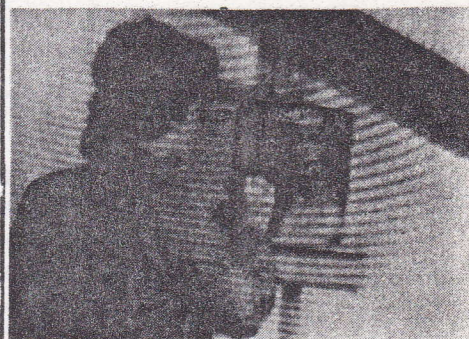
by Tina Keane, 20 mins.

'The theme of my work is the image SHE from girlhood to womanhood ... Women have changed but to change radically we must radically change the image of SHE.' (Tina Keane)

## THREE ASPECTS OF PERFORMANCE AND INSTALLATIONS

by Tina Keane, 20 mins.

Programme introduced by Tina Keane and Rachel Finkelstein.



Tina Keane: 'She'



## FINANCE GROUP REPORT

CURRENT SITUATION - Balance in bank - £333.32 (including £100 donation)

<u>Income</u>	from groups per month	- £42
	standing orders from individuals	- £32
	Sales, disco's, meeting donations etc.	- £24 average
		£98

<u>Outgoings</u>	Rent	- £41.60
	Rates	- £26.45
	Electricity	- £21.50
	Gas	- £8.00
	Telephone	- £9.62
		£106.17

We are not quite covering costs but we are going to claim for rate relief for the Rape Crisis Centre as it is a charity. But you can help by giving a monthly donation and/or by attending the monthly disco's at the Hearty Goodfellow each month.

PROJECTED IDEAS - There are several things that need doing but no means of making decisions. We will have a meeting to discuss the ideas on Thursday 21st May at the Women's Centre at 7p.m. Come along if you would like to get involved or have any ideas about fund-raising.

1. Clearing out the cellar There is a really offensive smell coming from the cellar, particularly during the summer, and a risk of rats. The council will clear it for £20-£30 or else we can hire a skip and do it ourselves for £15. - it all depends on woman-power!
2. Re-wiring the top floor There is only one socket and about four things plugged in so it's only a matter of time before a fire starts. Lois has agreed to do it with help. The cost of materials and labour will be about £50 or less.
3. Donations Judy Kirk faces a fine of £300-£400, for spray-painting in support of the Maw Sisters last year (November) 8 women were arrested in London after the Lesbian Conference Social, and need a large defence fund. £27 was raised at the April 14th. Tuesday Disco. We have funds to make a donation of, say, £25 to each, possibly more.
4. Spare Rib. We get 12½% discount on copies sold here (ie. 6p. on each copy). We are only getting 10 copies at the moment & are not selling all of those. If we could get 50 women to get their copies here, we'd make £3 a month. Also we could sell more publications at discount to us, if there are women to take responsibility for it. If you can't get to the meeting, please write to us with your views beforehand.

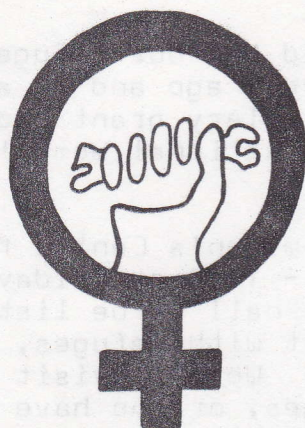
Marion, Josie, Delphine, Kim.

## WOMEN'S FESTIVAL

Inspired by the success of the Leicester Women's Festival earlier this year a few women have shown some interest (albeit tentatively) in organising a similar event in Nottingham. All women interested and/or bursting with ideas will be delighted to learn that a planning meeting will take place at the Women's Centre on Thursday April 30th at 8p.m. Contact Judy 966801



# WOMENS & THE MISTAKES DISCO womens rockband



**W.A.M.T.**

**Sat. 23rd May**

**8 till 12**



**Queens Walk**

**Community Centre  
The Meadows**

## Women And Manual Trades 9th National Conference

SATURDAY and SUNDAY 23/24 May at Queen's Walk Community Centre

Creche facilities

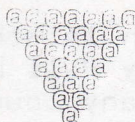
Food available - lunch and tea Saturday  
lunch Sunday

Registration forms and information from : Judy 45361

Fee: £4.00 waged  
£2.00 non-waged

SATURDAY NIGHT SOCIAL - OPEN TO ALL WOMEN

£1.50 (lower if registering for conference)



## ADVANCE NOTICE OF DATES

- June 20 Nottingham Women's Liberation Conference
- June 27 Regional Pregnancy Testing Conference
- July 4 W.O.N.T. Day of Workshops. Practical and discussion sessions

SEE JUNE DIARY FOR DETAILS ! ! !



## WOMEN'S AID ADVICE & SUPPORT GROUP

We were formerly Rushcliffe Women's Aid but our refuge was taken over by Rushcliffe Borough Council a year ago and we adopted the new name to insure continuation of our salary grant from Nottingham County Council. We are members of the National Women's Aid Federation and support their aims.

We work in the downstairs room in the Women's Centre from 10.00 - 3.00 Monday - Thursday and from 10.00 - 1.00 on Friday (Tel 46490). We support battered women who phone or call in by listening, and offering practical help such as contact with refuges, solicitors, housing agencies, social security etc. We also visit women who have been in Nottingham or Rushcliffe Refuges, or who have visited the Women's Centre; we arrange social events and go to court with them if necessary.

Our group has one paid worker financed by the Social Services Committee and the rest of the work is done voluntarily, mostly by refuge ex-residents. Running costs - heating, lighting, travelling expenses, rent and stationery - are met entirely by fund raising. Our jumble sale a few weeks ago raised £57 and we would like to thank everyone who contributed jumble. Disco's are also well supported.

We feel that an important part of our role is education about violence to women which we believe originates in the unequal structure of society and we give talks to schools, colleges and other interested groups. In November we held a one-day course for 'professional' workers interested.

If anyone wants to join our group and has time to spare during the day please get in touch with us at the Women's Centre

## NATIONAL ABORTION CAMPAIGN

Talks for May - 12 "Future Plans for N.A.C."

26 "Abortion Referral in Nottingham"

I.C.A.S.C. (International Contraception, Abortion and Sterilization Campaign)

There will be an international Day of Action on May 16 at Conway Hall London 1.30 - 6.00 with speakers from many countries, films, entertainment and an African dinner.

Abortion Clinic in Seville 432 women were summonsed for having had abortions. At the hearing 2,500 women appeared saying that they too had had abortions! A further 20,000 women sent letters and statements in support.

## NATIONAL LESBIAN CONFERENCE

After the social on Saturday night groups of women were attacked by the police. Eight women have now been charged and many were injured. At the plenary the LESBIAN SOCIAL DEFENCE FUND was started and £200 was collected. Money will be needed urgently. Cheques should be made payable to Lesbian Social Defence Fund and sent to c/o A Woman's Place, William IVth Street, W.C.2. Any witnesses to the attacks or arrests should contact the solicitor : Bridget McKensie, 115, Manor Road, N16 Tel 01 800 0471.



## W O M E N ' S   C E N T R E   S U B S C R I P T I O N

The Women's Centre Account is used to pay bills, repairs etc  
(see Finance Group) Groups using the Centre pay towards costs  
BUT we need more! If you can afford a regular amount please send  
the form to your bank.

.....  
STANDING ORDER AUTHORITY - TO THE MANAGER:

BANK & BRANCH ..... ADDRESS .....

.....  
Please make payment to the debit of the account specified as per  
details given:

ACCOUNT TO BE DEBITED ..... (NAME & NUMBER)

PAYEE : Nottingham Women's Liberation Group

A/C NUMBER: 97021350 NATIONAL WESTMINSTER BANK LIMITED  
UNIVERSITY PARK, NOTTINGHAM

AMOUNT TO BE DEBITED ..... FREQUENCY .....

FIRST PAYMENT .....

This order cancels all previous orders made by me to the same  
payee and will continue until written notice is received by you.

SIGNATURE ..... ADDRESS .....

.....  
.....

D I A R Y   S U B S C R I P T I O N S
---------------------------------------

££\$\$\$££

ISSUES WILL COST 5p - ANY MONEY MADE ABOVE COSTS WILL GO  
TO THE ♀ CENTRE. TO KEEP COSTS LOW, WE WILL DISTRIBUTE COPIES  
THROUGH GROUPS THAT MEET REGULARLY AT THE ♀ CENTRE. OTHERWISE,  
IF YOU WANT TO HAVE ONE POSTED PLEASE SEND £1.00 FOR THE NEXT  
6 MONTHS' ISSUES.

.....  
PLEASE SEND 6 MONTHS ISSUES OF 'WOMEN'S DIARY'. I ENCLOSE  
£1.00. (CHEQUES OR P/OS PAYABLE TO WOMEN'S DIARY AND SHOULD  
BE SENT TOGETHER WITH FORM TO:

WOMEN'S DIARY  
c/o 76 ADDISON STREET  
NOTTINGHAM)

NAME : ..... ADDRESS : .....

.....



# MONTHLY SOCIAL

8 p.m.

The Yorker  
Mansfield Rd.  
Thurs. 7th May

A short talk on  
the history of  
the Nottingham  
Women's Group

