

December 1993
Issue 44

outright!

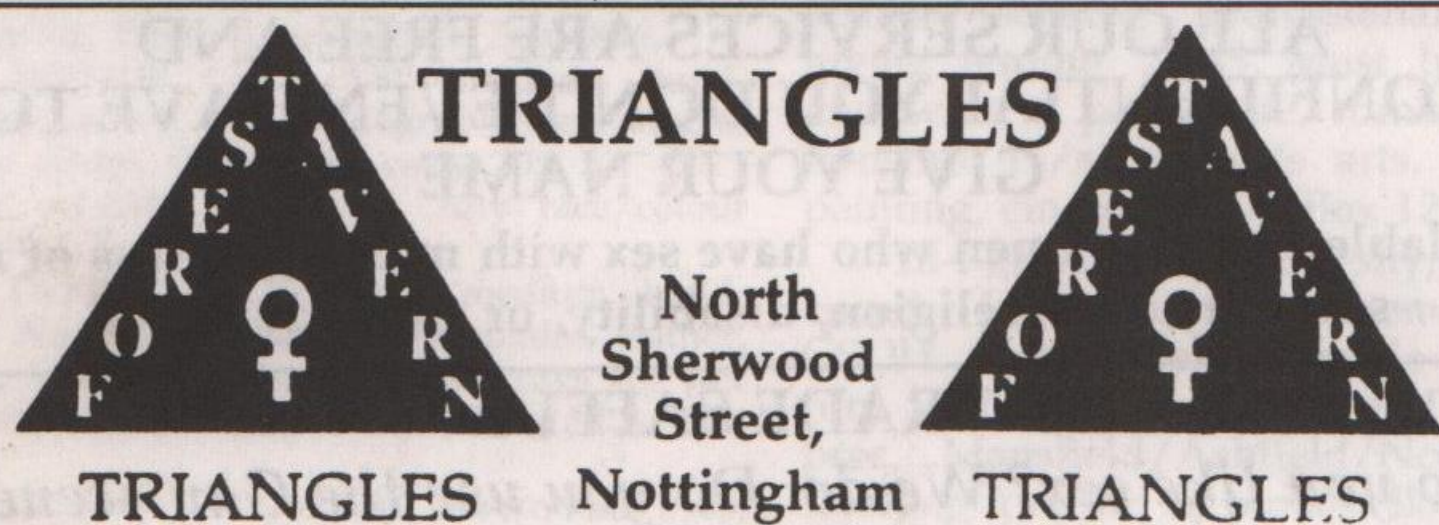
free!

for gays lesbians and bisexuals in central england

GP'S PINK LINK UP

A group of Leicestershire doctors have introduced a 'Pink Triangle' network in the city and county.

Ten doctors' surgeries, including both city university clinics, are participating in the pilot scheme to provide 'gay-friendly' health care, which is one of the first of its kind in Britain. The surgeries will display pink triangle posters carrying a contact name for each practice and will be staffed by male and female GP's. The service is available to lesbians, gay men and bisexual people. For further information on the scheme contact Jill or Andy at the Lesbian and Gay Resource Centre: (0533) 547412, LASS on (0533) 559995 or Kel and Graeme at the City Council Health Promotion Unit on (0533) 526429.



Friday 17th Dec: 7pm-2am
CHRISTMAS KARAOKE

with everyone's favourite TOMMY T
Admission £1 members, £2.50 guests.

Friday 24th Dec: Xmas Eve 7pm-2am

Celebrate with our resident DJ
Members free - others £2 Doors close 10pm.

Saturday 25th Dec: Christmas Day

Show off your Santa's sacks - open to party for everyone
FREE ADMISSION Doors open 7pm.

Sunday 26th Dec

SUNDAY LUNCH PARTY

Bring your left overs - nutloaves or turkey legs welcome

Monday 27th Dec: 7-11.30pm

BRING YOUR OWN WIND/STRINGS or
TRIANGLES

Improvise party night - be our guest performer - off the cuff talent show. You'll have stars in your eyes. We provide the PA. Come along and do your thing.

Pub hours follow to New Year's Eve with our Grande Party of Parties - Triangle style.

NEW YEAR'S EVE

Disco and Buffet 7pm-2am Doors close 10pm.

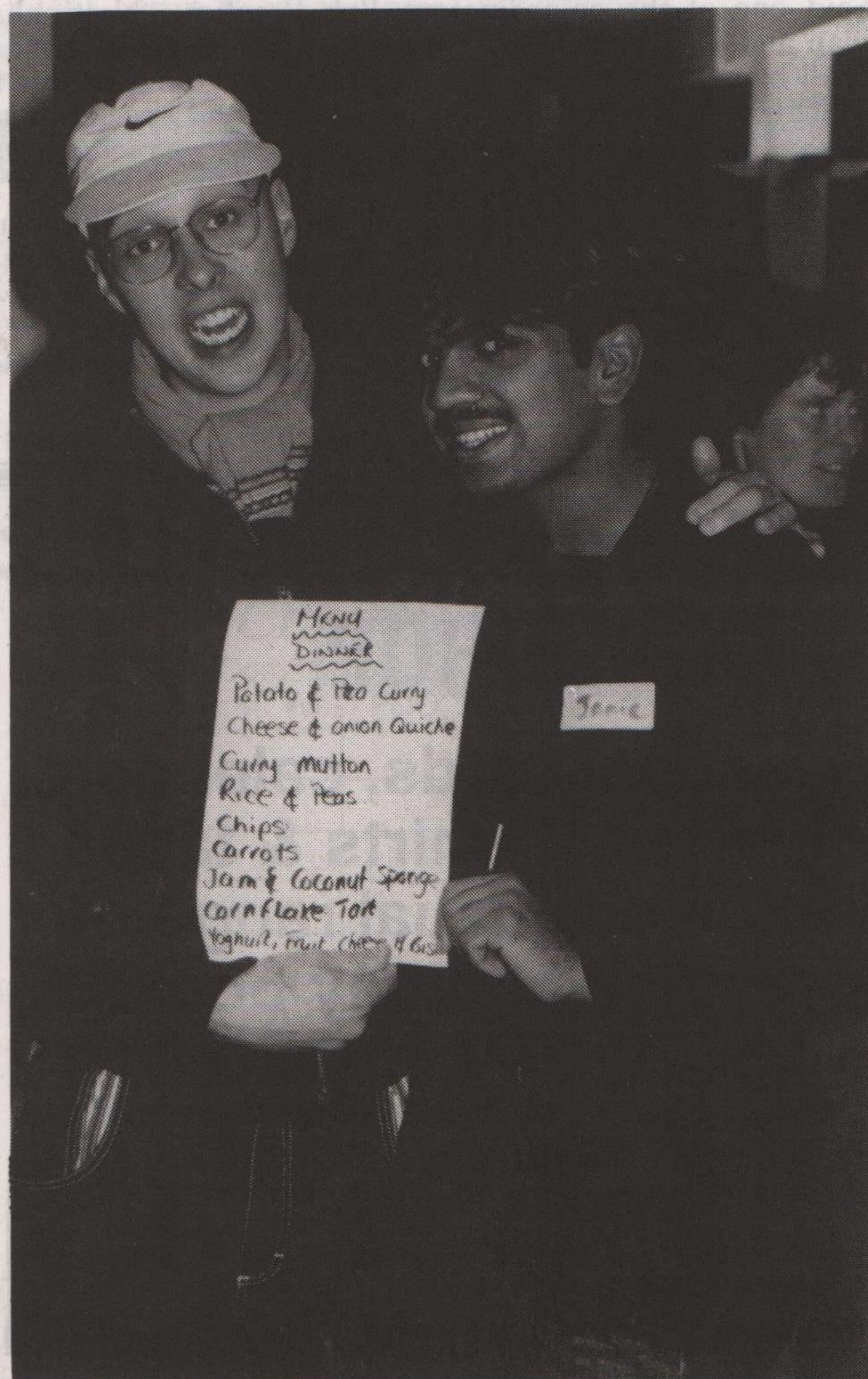
Tickets can be purchased prior to 31st at only £1 members, £3 others - or pay on the door on the night: £5 per head for members and others.

YOUTH TAKES THE PLUNGE

On Saturday 20th November Nottingham Lesbian and Gay Youth Coalition held its first event for Lesbian, Gay and Bisexual Young People, hosted by Base 51 and several of their staff team. The event attracted around 50 young people from Nottinghamshire, and others from as far away as Kent, Yorkshire and Merseyside.

During the day a variety of workshops ran and were largely very popular and even Fun! Workshops included Media, Video work, Massage & Relaxation, Sexual Health, "Born that Way/Made that Way?", Coming Out, Housing and a host of others. For those of a more physical persuasion Outdoor Pursuits at the Arches was available. A small but intrepid group abseiled, bridge jumped and canoed until dark. A video was made of the day showing workshops, activities, interviews with participants and capturing two "towel-clad" survivors of a capsized canoe!

(continued on page two)



LIVE, LUBRICATED & CONDOM CRAZY!

Following World Aids Day MESMEN Coventry and Warwickshire, the local gay and bisexual men's health project, is sponsoring three major safer sex parties including sexy strippers, drag artists and international poster displays. The 'Live and Lubricated Parties' take place at McGuigan's (Coventry) on 3rd December, starring male and female strippers, Achilles and Caress. The Harcourt (Nuneaton) on Saturday 4th December hosts sexy stripper Achilles, while the Antelope Inn, (Warwick) on Friday 10th December stars drag artist Millie.

All money raised at these events will be used to continue funding the free condom and lubricant distribution scheme in gay pubs in Coventry and Warwickshire. This follows their successful September launch at the Antelope Inn in Warwick of a free condom and lube distribution scheme plus permanent information board. Said Michael Gilday, landlord of the Antelope: "There is a need for gay pubs to help promote safer sex activities. We are proud to continue to work with MESMEN to help protect our community". For more information contact the MESMEN Information Line on (0203) 224090.

(Picture shows Dave, a regular, Michael Gilday, landlord and John Taylor, MESMEN worker).



Photo: Coventry MESMEN

YOUTH TAKE THE PLUNGE

(continued from front page)

Following a day of workshops, adventuring, socialising, fun and amazing food the day was rounded off with a massage and relaxation workshop, a disco and watching the "Do I really look/sound like that?" video of the day. Plaudits came thick and fast from the participants: I'm so glad to know that I'm not the only lesbian in Nottingham'; 'it's amazing - I saw people actually talking to each other!'; I'm glad to know that I'm not the only Asian gay man in Nottingham'.

Said one of the co-ordinators, Bob Prentice, "Nottingham Lesbian and Gay Youth Coalition would like to thank Base 51 staff, all helpers and facilitators, funders and young people for enabling such a wonderful event to happen and special thanks to Karen and Paul for the fantastic snap". (More pictures next month).

If you would like to get involved with NLGYC or have any ideas/venues for future events please contact Bob Prentice at the Mansfield Information Shop for Young People on (0623) 657077.

Nottingham GLYP can be contacted by phone: see Notice-board on page five.

Photo: Richard McCance

INDEPENDENT BOOKSHOP

Seasonal cards, calendars, diaries; T-shirts & tapes plus our usual range of lesbian and gay books.

MAIL ORDER SERVICE

Open 9.30am (10.30am Thurs) to 5.30pm
Monday - Saturday

69 SURREY STREET
SHEFFIELD S1 2LH
(0742) 737722 - 758288



THE MEN'S SEXUAL HEALTH PROJECT

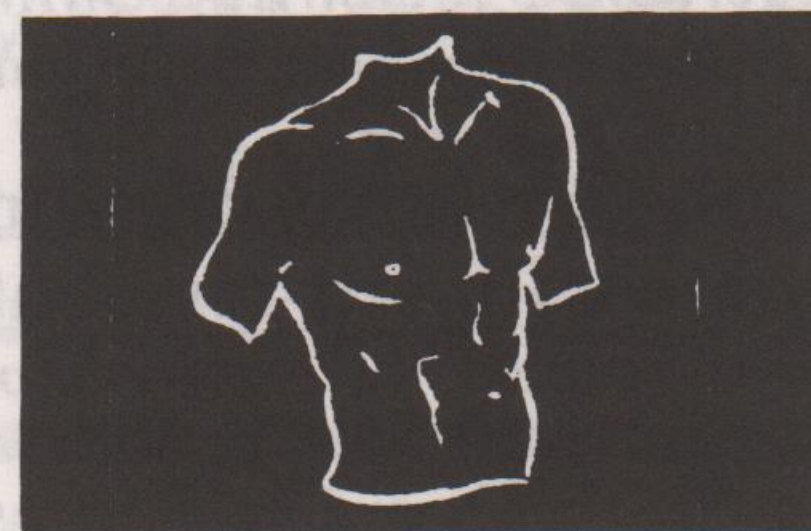
45, King Street, Leicester

ALL OUR SERVICES ARE FREE AND
CONFIDENTIAL YOU DON'T EVEN HAVE TO
GIVE YOUR NAME

Available free to all men who have sex with men regardless of age, sexuality, race, religion, disability, or antibody status.

TRADE SAFELY

*Do you like sex? We do. Do you use the Gay scene?
Do you cottage or cruise? Did you know that a gay
man tests HIV + every hour of the working week?
Did you know we can now do something about this?*



TRADE is a group of men who have sex with men who want to do something about the growing HIV epidemic.

FOR THE DATE OF OUR NEXT MEETING AT
45, KING STREET, LEICESTER, PHONE ANDY.

If you'd like to get involved, why not come along.

For more information phone Andy:
0533 541747 (office hours)

FREE CONDOM DROP IN

Opening times

Every Thursday 11.30am-2.30pm

Every Friday 11.30am-2.30pm

Second Saturday each month 12.00am-3.00pm

(No appointment necessary)

*If you have difficulties visiting during these times ring
0533-541747 for an appointment free.... (and easy)*

ABSOLUTELY FREE!

*A choice of gay safe condoms *Water based lubricants *Dental dams, latex gloves *Information, counselling and support on HIV/AIDS, sexuality, relationships, HIV testing, safer sex or any concerns about sexual health
*Leaflets, safer sex videos, posters etc.

WOMEN MOBILISE AROUND THE WORLD

The World Conference on Human Rights in Vienna in June this year saw the largest ever mobilisation by women's groups from around the world for such an event. The aim was to put violence against women on the international agenda as an issue of human rights. Symbolism/irony wasn't lost on the delegates however who noted the conference was structured as a pyramid: the high and mighty did their stuff on the top floors, representing 170 governments, while non-governmental organisations held their forum in the basement, running workshops, stalls etc. The aim of the women's groups was to make the UN Human Rights Centre 'gender sensitive' and to lobby for a Special Rapporteur to investigate violence against women, both of which were achieved! Picture shows women protesting about mass rape in the war in ex-Yugoslavia. Thanks to BAD ATTITUDE for picture and feature).



VOLUNTEERS PLEASE

James Taylor, a student at a Nottingham FE college who is undertaking a BTEC National Diploma in Social Care, is looking for volunteer men within the East Midlands who have been victims of sexual aggression to fill in an anonymous questionnaire to help in his research project. If you feel that you could help he can be contacted at the following address. L. Green (Course Co-ordinator), Arnold & Carlton FE College, Digby Avenue, Mapperley, Nottingham NG3 6DR or phone (0602) 520052 leaving your name and telephone number and your call will be returned and the questionnaire will be forwarded to you in strictest confidence and anonymity.

FESTIVE DANCES

The next Gay Men's festive Circle Dancing is on Sunday, 19th December from 2pm until 5pm. If you've never circle danced, you haven't lived! You don't need a partner, or any advance knowledge and if you've two left feet it's not a problem, the steps are really easy. It's also a nice way to spend a Sunday afternoon before the season of Duty takes over. £1.50 waged £1.00 unwaged, (includes punch, mince pies and some tasty seasonal offerings). Takes place in gay-friendly space in central Nottingham. Phone for directions and to reserve a place (limited to 20) 0602 780124. This event is organised by the Edward Carpenter Community - East Midlands group.

DERBY AIDSLINE

Worried/confused about HIV/AIDS?

For confidential advice and information, phone FREE on Derby Aidsline

0800 - 622738

Mon - Fri 7 - 9pm
Thurs 2 - 4pm °

HYSON GREEN LAW CENTRE



119 RADFORD ROAD

(opp. Asda) Telephone: 787813

OPENING TIMES

Monday, Tuesday, Thursday & Friday 10am - 1pm and

Thursday evening 6.30 - 8pm

WE PROVIDE FREE LEGAL ADVICE AND REPRESENTATION ON...

SOCIAL SECURITY, EMPLOYMENT, HOUSING & IMMIGRATION/ NATIONALITY LAW

HYSON GREEN LAW CENTRE

Improving Access to Justice

LINCOLNSHIRE AIDS VOLUNTARY GROUP

Tel (0522) 513999

Mon, Wed, Fri 9am to 9pm

Tues, Thur 9am to 5.30pm

24 hour answerphone

For information, advice, support, buddying, safer sex etc

All calls confidential

Please call the above number or visit us in Lincoln at **THE HEALTH SHOP, PORTLAND HOUSE, 3, PORTLAND STREET, LINCOLN.**

USE YOUR BUYING POWER



Buying from countries and companies with a commitment to social justice - Hiziki has the widest range of wholefoods, fresh bread, take-away snacks, organic fruit & veg, vegetarian convenience foods, and organic wine & beer in Nottingham. We also stock many natural remedies, cruelty-free toiletries & environment friendly cleaning products.

5% discount for UB40s, OAPs & students on Wed/Thurs.

Hiziki is a workers' co-operative

15 GOOSEGATE, HOCKLEY NOTTINGHAM

FOR POSITIVE CHANGE

BEARING IT ALL

One of the fastest growing gay membership clubs in the country is the Bears Club which has over seven hundred members countrywide. Paul Manning (pictured) is regional contact of the five-year-old club, founded by Carl Morris who identified a need for an organisation that catered for people who were not necessarily young or pretty. So Carl set up the club which Paul explains is for "hairy, moustached, or bearded guys and their admirers".

"It's open to people of all ages. We have members ranging from 21 to 72. All kinds of people belong, thin, fat and often with a penchant for leather though not all bears are leather-orientated by any means", he stresses.

But they are not fastidious about dress codes; "We heard recently from a friend who had just returned from a gay resort. He had an awful week there simply because his braces were not of the correct width and he appeared to be getting the cold shoulder". "It's the superficiality of that kind of situation which is spurned by the Bears", Paul added.

The emphasis of the Bears Club is on friendliness; they see a positive virtue in welcoming people and ensuring they feel part of the



group. And perhaps it comes as no surprise to learn that hugging is firmly on the agenda too. But in a society that is generally starved of human warmth and physical contact that surely can't be a bad thing!

Who doesn't remember the general unfriendliness of the commercial scene typified by twenty heads turning in unison as a new face in town enters, only to turn away again without a flicker of recognition unless, of course, that person happens to be Mr. Wonderful.

The Group publish a bi-monthly newsletter containing information and articles written by members, there is also a section of contact ads. and an events diary. BCUK hold regular get-togethers and parties across the country. They also run a 'hosBeartality' scheme. Paul explains. "If you are travelling away from home it's usually possible for the club to arrange one or two nights accommodation in a fellow member's house with little by way or recompense except perhaps a pot or two of honey in return!" Further details from BCUK, 56 Albert Street Beswick, Manchester M11 3SU.

Photo: Richard McCance

ATTENTION ALL UNISON MEMBERS!

The first lesbian/gay conference of UNISON (formerly NUPE, NALGO, and COHSE) takes place over the weekend of 21st-23rd January in Glasgow at the Central Hotel when 500 lesbians and gay members are expected to attend.

There have already been ten successful annual conferences of NALGO lesbians and gay men and this first conference of UNISON promises to be the largest to date. Black people and people with disabilities are under-represented as are COHSE or NUPE ex-members in the new union. There is still time to register as a delegate if you hurry and if you are successful your expenses will be taken care of. Contact your branch or if you don't want to come out to them you should contact UNISON direct at 1 Mabledon Place, London WC1H9AJ or phone Kursad, Lesbian/Gay Rights Officer, 071 387 6692 x 321 (24 hours).

There is also a support group for lesbians and gays in UNISON in the East Midlands that meets every six weeks around the region. If you would like more information contact Gary Nash, (0623) 811312 (H), Karen Waldram, (0602) 692317 or Richard McCance (0602) 780124. Pictured are some ex-NALGO members from yesteryear who took the carriage by storm with our own version of 'blind date'.



Photo: Richard McCance

MUSHROOM'S CHRISTMAS CELLAR

ONCE AGAIN OPENS

GIFTS AND CARDS
CALENDARS
DIARIES
CANDLES
WRAPPING PAPER
AND FAIRTRADING GOODS
FROM AROUND THE WORLD.

GIFTS FROM GREENPEACE, FRIENDS OF THE EARTH, AMNESTY, THE VEGETARIAN SOCIETY, OXFAM, NEW INTERNATIONALIST, TRADCRAFT AND OTHERS.

TRADCRAFT PRODUCTS ARE FROM COMMUNITIES AND SMALL BUSINESSES FOR WHOM TRADE IS BASED ON JUSTICE, CONCERN FOR PEOPLE AND CARE FOR THE ENVIRONMENT.

OUR MUSIC SECTION OF CD'S AND TAPES IS ALSO GOING UNDERGROUND - BIGGER AND BETTER THAN EVER.

MUSHROOM BOOKSHOP
10-12 HEATHCOTE STREET
NOTTINGHAM NG1 3AA 0602 582506

IS YOUR BRIGHT IDEA STUCK ON THE DRAWING BOARD?

The Nottingham City Council Centre for Product Development provides practical support to help companies and enterprising individuals turn technical ideas into commercial successes.

We support the application of electronic & mechanical technology with:

- Impartial Advice
- A Prototyping Service
- Workshop facilities

Call us to discuss your ideas and how we can help on

0602 782200

YOU HAVE THE IDEAS ...
WE HAVE THE TECHNOLOGY

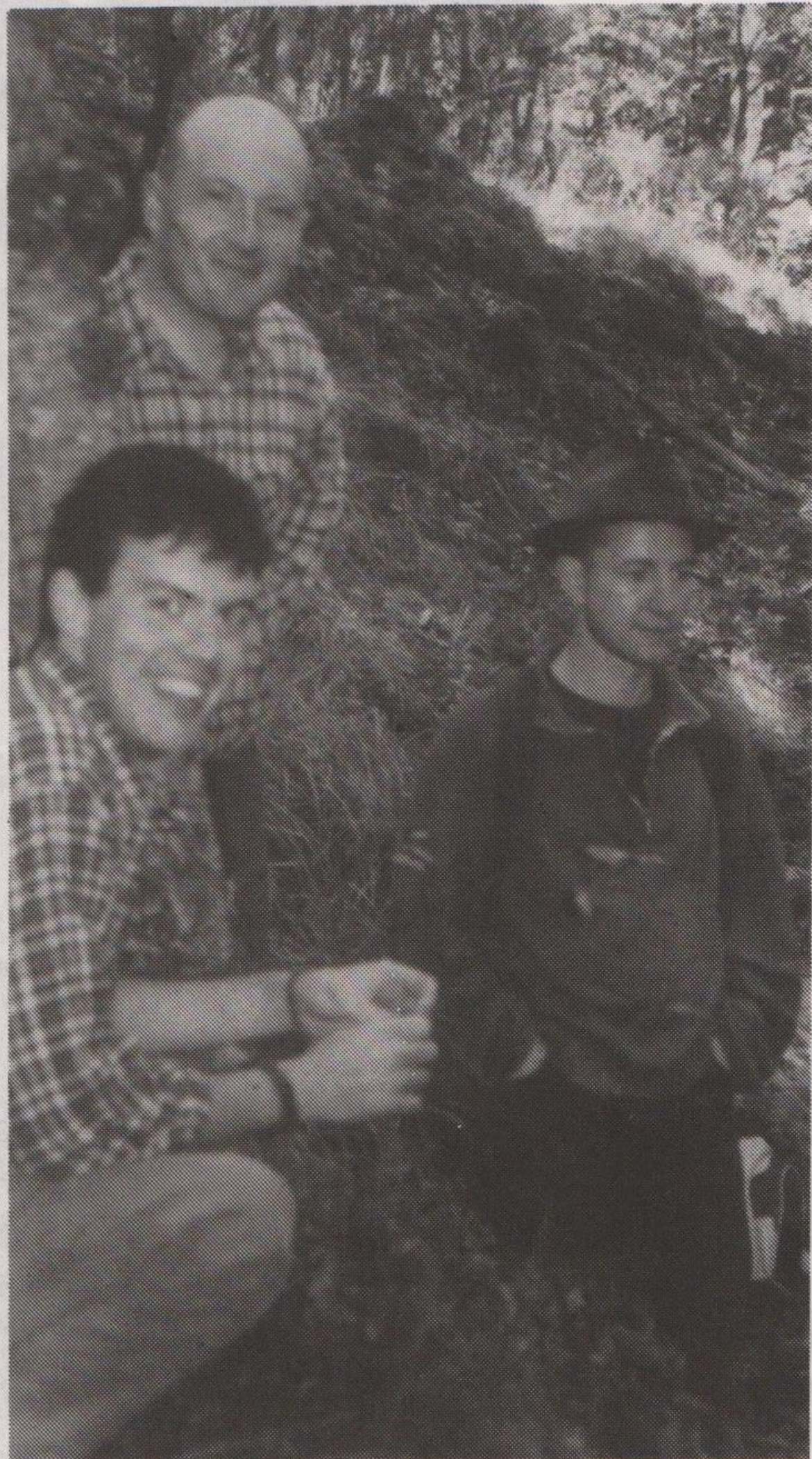
DERBYSHIRE GAY MALE FRIENDS

"ACCENT" FUN AND SOCIAL GROUP

"OPEN" MEETINGS EVERY TUESDAY
8.30pm AT MARSDENS, MARSDEN STREET, CHESTERFIELD.

ON-GOING INTEREST AND ACTIVITIES FOR ALL AGES

Meet a friend, enjoy a chat or solve a problem via the CHATLINE, Fridays 8pm-12 midnight (0773) 833142 - Further details from Brian on the above number



GET AWAY FROM IT ALL!

Fancy spending a residential weekend in the Derbyshire Peak District with 20 other gay men? 'Stonewall Breaks' are organising a midwinter break from the 11th-13th February near Cromford, based in centrally-heated dormitory-style accommodation. It's a chance to spend time together in beautiful surroundings in carefully chosen gay friendly/safe places where we can be ourselves on our own terms and have exclusive use of the premises. As well as walking, and indoor activities, there will be a chance get to know a few people as well and enjoy yourself. The weekend all-inclusive costs starts at £33, (sliding scale according to income) and includes a five-course candlelit dinner. Send SAE for further details to OUTRIGHT (STONEWALL BREAKS), P.O. Box 4, West P.D.O., Nottingham, NG7 2DJ. SAE please (0602) 780124.

HOME FROM HOME

John Lydon has returned home to Derby after fourteen years of living in Nottingham and is in the process of creating a 'Home from Home' in the Guest House he recently bought in the City. "I was looking around for a while for a suitable property following a business move and this place came up", said John. And he aims to make sure his guests really feel at home; "I like Christmas myself and want it to be enjoyable for me so why not for others as well. Besides, its nice to meet up with other gay people". With this in mind he has put together a three day package



where he says you will be guaranteed to be filled with fun and good food. So if you fancy spending time with a small group of other guys in a homely atmosphere give him a call.

DERBY HOME FROM HOME GUEST HOUSE

John cordially invites
you to a fun-packed
3-day Christmas break,
24th-26th December
(3 nights).

Friendly, informal and
homely atmosphere
guaranteed.

Club concessions, bingo,
fancy dress party, board
games.

£119 per head inclusive

For details phone

0332 365735 or 0374 621803

(mobile phone)



ANVIL PRESS

PRINT & DESIGN

A WORKERS CO-OPERATIVE

Tel: 0332 298213

NOTICE BOARD

⑧ Candlelight Gathering

To mark World AIDS Day, Friends Meeting House, Queens Road, Leicester 2.30pm on Dec 5th. More info (0509) 412092.

⑧ Lemonaid '93

Sunday 5th December, 7pm 'til late. The Very Good Rock N' Roll Band, Latex Theatre and more. At the Old Vic, Fletcher-gate, Nottingham. Tickets from NAIP (0602) 411989.

⑧ Derby Students

The Derby University Lesbian, Gay, Bisexual Society meets term time at 8pm at the Green Lane site every Thursday. More info from Sam Townsend (0332) 372460.

⑧ Black Lesbian Group

The Nott'm Black Lesbian Group meet every month on the first Friday at 8pm at the Womens Centre, Chaucer St. Contact via Lesbian Line (see Helpline panel page 12).

⑧ South Staff Friends

A social group for gays, lesbians and bisexuals which meets Wednesdays at The Tree in Rugeley from 7pm in the room marked 'Private Meeting'. All welcome. The group also runs a regular helpline: see Helpline page 12 for details.

⑧ GLYP

Gay and Lesbian Young People meets weekly in Nottingham and membership is open to anyone under the age of 26 who is, or feels they may be gay, lesbian or bisexual. Their new phone number is 0602-502028.

⑧ Atomic Kandy

Atomic Kandy perform at 'Winter Pride', ULU, Malet St, London on Dec 12th. Also at Flirty Gerty, Sheffield, on Dec 20th (0742) 323732, and at the Running Horse, Nottingham on 29th Dec.

⑧ Cabaret Evening

Spring Chickens, Julie McNamara, Garner & Ross at the Old Vic Tavern on Thursday 16th Dec at 8pm.

⑧ Abigail in Concert

At Wonderland, Towler St, Peterborough on Friday 10th Dec, 9pm-1.30am.

LIFE IS *NOT* THE SAME IF YOU'RE GAY

The laws surrounding pensions make it difficult for unmarried couples to plan for retirement. When you are gay, it is not only the law that makes it difficult. It is the misconceptions surrounding intestacy and trusts. In other words, if you think you may ever want a partner to benefit from your pension plan in the event of your death you cannot leave it to chance.

Your independent financial adviser should not only inform you of the costs involved of any particular pension policy, but the size, strength and past performance of the pension office. Financial advice, however, does not stop there.

To us, getting it right seems surprisingly simple. We do not charge and our service is confidential.

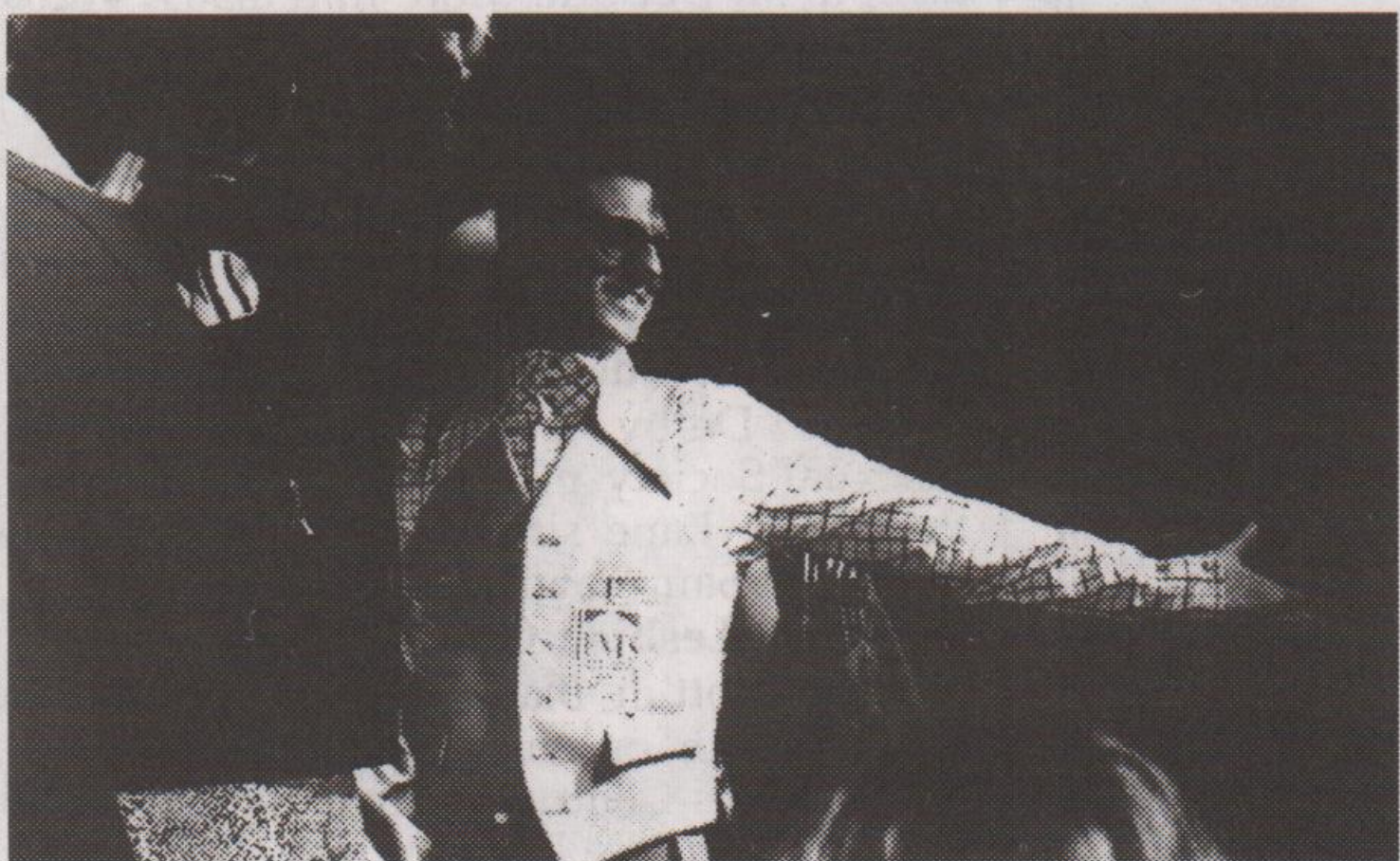
GAY MONEY STRAIGHT ADVICE

ivan massow associates

195 Wardour Street, London W1

Tel: 071-494-1848 Fax: 071-494-1849

UNIQUE FASHION EVENT A RESONDING SUCCESS



Spectators and participants alike are hailing a recent Fashion Event, held to raise money for AIDS, as a great success and the organiser is already planning another event for next year.

The Red Ribbon Fashion Event, staged in Loughborough on 27th October, featured garment collections from leading fashion names never before seen together on one catwalk - Vivienne Westwood, Helen Storey, Red or Dead and

many others. Alternative comic Jo Brand hosted the event and there were songs from Labi Siffre and Tom Robinson. Jeffrey Bryant and his models provided an outrageous nightclub wear section which gave a stunning climax to the show.

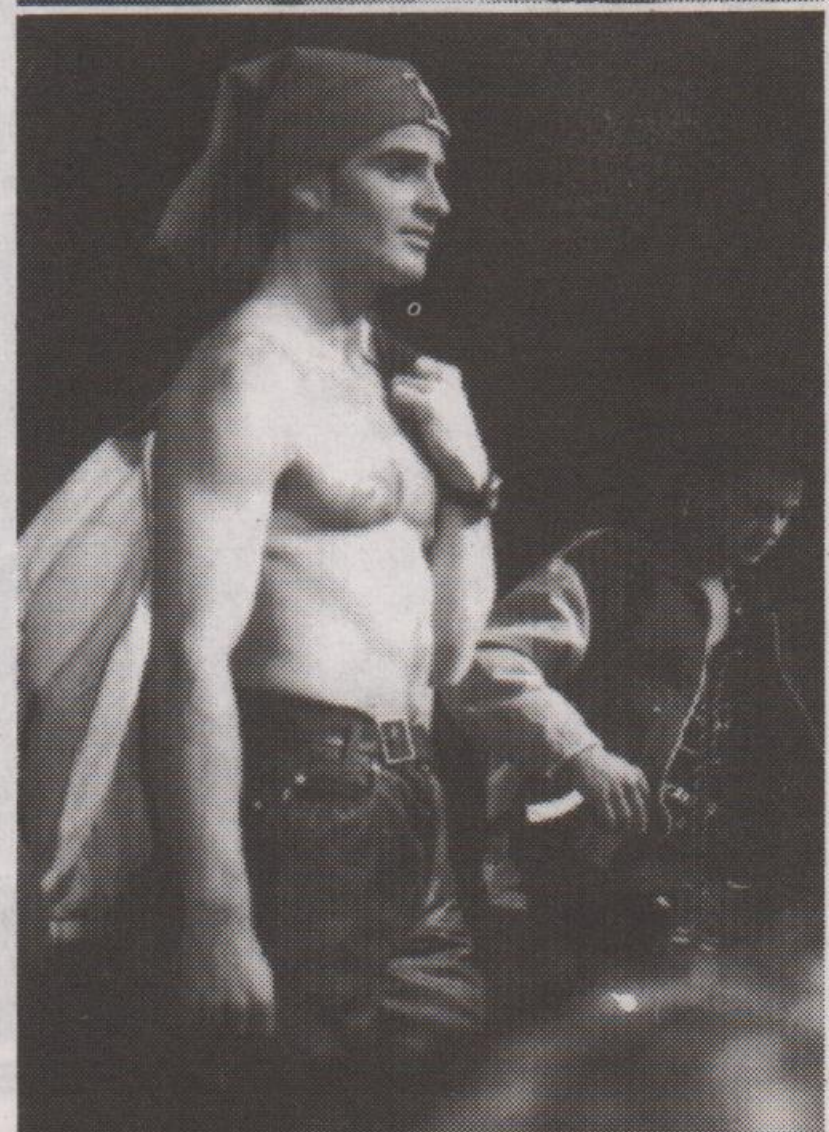
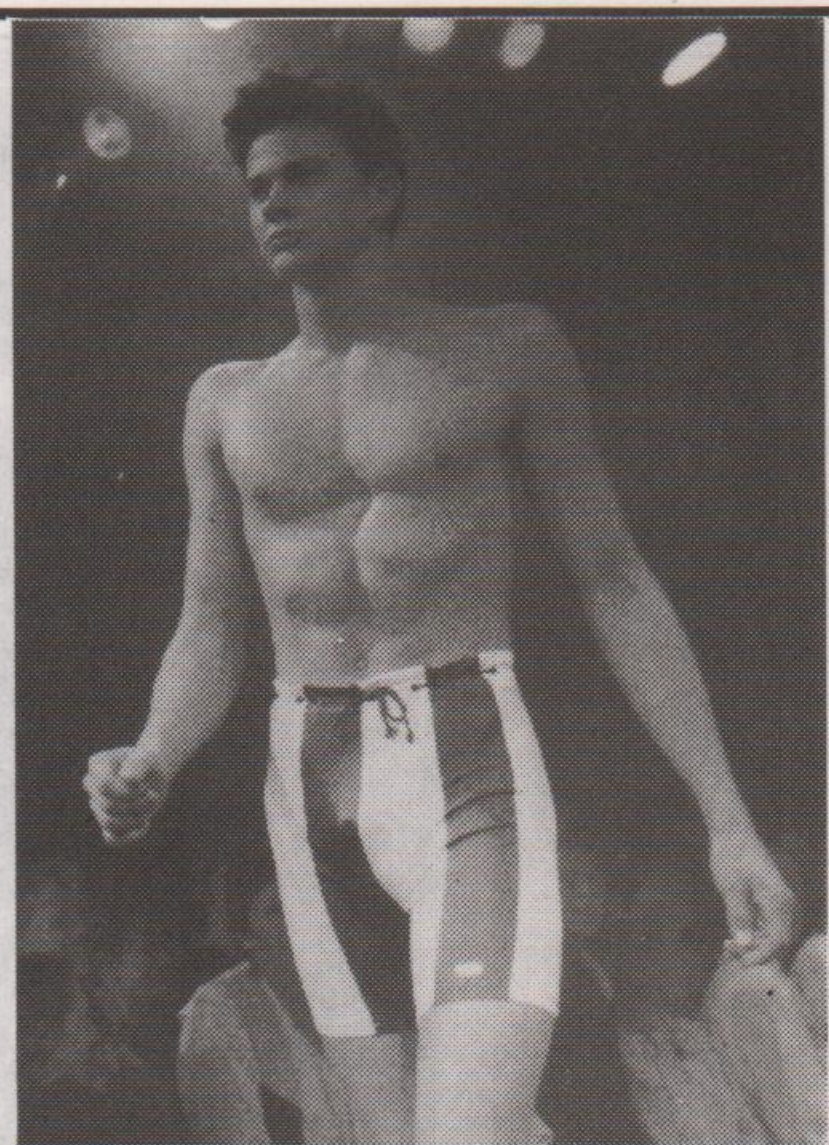
Said organiser Philip Blake, (above left), "the event was sold out two weeks in advance. The audience loved the show and the models enjoyed themselves immensely. We also raised £5,000 for the

Leicestershire-based David Manley Fund, which offers direct financial support to people living with HIV and AIDS."

A video of the event is available from Philip Blake at a cost of £10.00, and any profits from its sale will add to the grand total. Photographs of the event are also available. For details contact Philip Blake on (0509) 223134 or fax (0602) 582870.



Jo Brand



Labi Siffre



Photos: Mike Kitchen

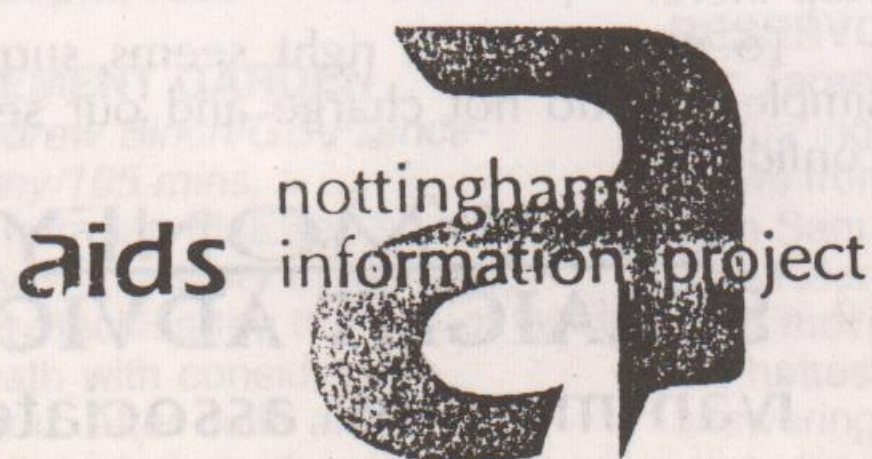
WORRIED, CONCERNED OR AFFECTED BY HIV OR AIDS? WE'RE HERE TO HELP.

+Information+Drop-In
+Support+Befriending

Contact us in confidence
(0602) 411989

8 Eldon Chambers, Wheeler
Gate, Nottingham NG1 2NS

Charity Registration No. 702070



A FREE SERVICE FOR GAY MEN IN NOTTINGHAM

Information and confidential
counselling on a range of issues
around HIV testing, safer sex and
sexual well-being in general.

- *free condoms
- *free KY
- *Hepatitis B vaccination
- *meeting place for groups
- *videos
- *no appointment necessary

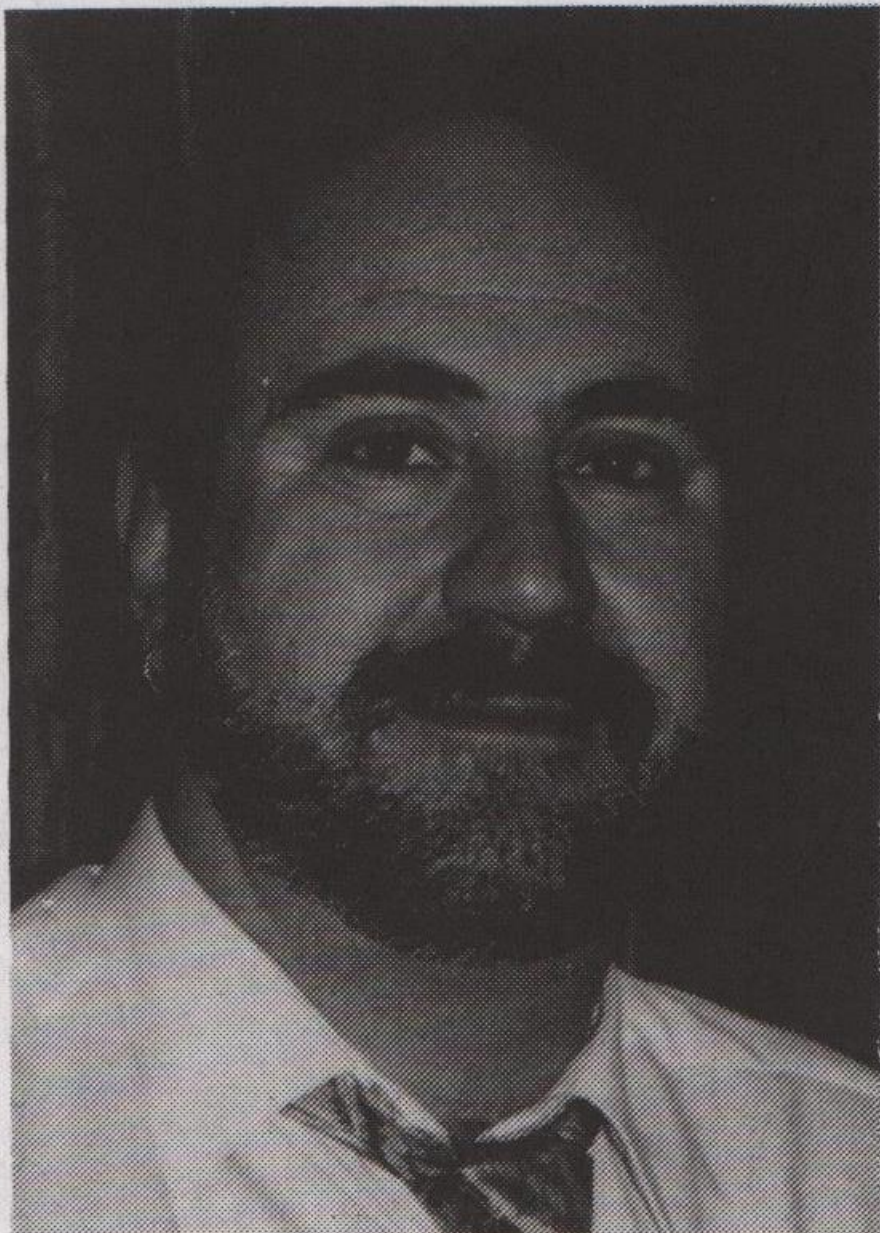
All in comfortable surroundings at
NOTTINGHAM HEALTH SHOP

Broad Street, Hockley, Nottingham
Drop in Mon-Fri 9am-5pm or ring
Ashley on (0602) 475414

WAKEFIELD/ ANYWHERE

Don't be lonely this
Christmas or New
Year. Treat yourself
to being pampered by a
cute friendly 25 year old.
Caring, genuine, discreet
service. Overnight stays,
massage, companionship
etc offered.

Tel: Lee on (0924) 387382.



Aromatherapy

More and more people are re-discovering the sensual delights of aromatherapy. This month we talk to Reuven Britten about an art that dates back thousands of years.

Reuven describes aromatherapy as the art of therapeutic massage using extracts of plants and oils, and his interest began to develop after qualifying as a masseur during his training as a

hairdresser. The need to treat scalp problems led him to use essential oils, which are the basic component of aromatherapy.

Reuven's collection of oils includes the most popular essences; of lavender, lemon, sandalwood, verbena, and a score of others. But there are believed to be about 700 in use around the world, all with their own special properties and uses.

"The process of extracting the oil from the leaf or flower can be very expensive and a litre of rose oil can cost £20,000" says Reuven. "Fortunately the quantity of essential oils required for a massage is small, and two or three drops in a 20ml spoon of base oil is all that is required. The base oil could be sweet almond, rape seed, or even Flora oil from the kitchen."

"Some oils are highly toxic" warns Reuven "and they should always be treated with respect. Only lavender can be used neat; all other oils must be diluted."

Aromatherapy works on the premise that the best way to prevent illness is to strengthen the body's self-defence mechanisms. "It's part of the long tradition of natural healing and was a respected science, until the development of modern medicine in the nineteenth century. In the past few years there has been a renewed interest as people have turned back to more natural remedies."

Next month Reuven explains the unique properties of some of the essential oils and how they are used in massage.

If you have any questions about training in aromatherapy phone Reuven on 0602-532500.

TEACHERS ORGANISE

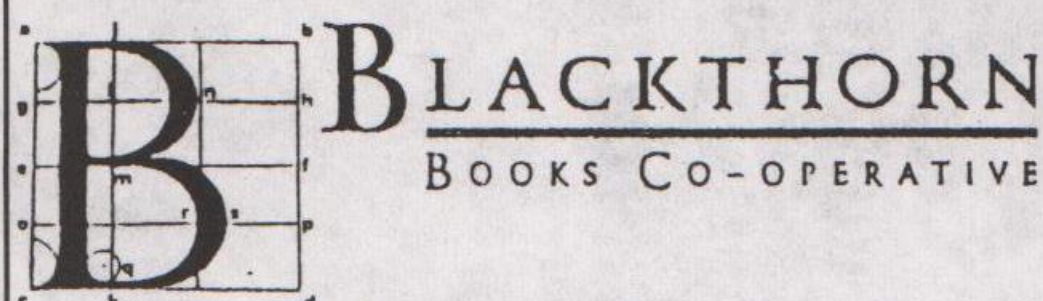
Teachers from Birmingham, Leicester, Sheffield and Nottingham were among the many who attended the national re-launch of LESBIAN AND GAY WORKERS IN EDUCATION in London last month. The meeting recognised the need to work for young people as well as for lesbian, gay and bisexual workers in the field of education.

Current practice in the Netherlands, where the government actively encourages school pupils to value same sex relationships, was outlined by a guest speaker. This led to a discussion of the shameful attitude of the British government in neglecting the needs of so many children by actually forbidding positive images of homosexuality. It was recognised that LAGWIE should be a major force in fighting heterosexism in our schools and colleges.

Employment issues provided the focus for much of the remainder of the day. Discussion centred around coming out at work, homophobia in the staffroom and classroom, the role of the trades unions and the generally vulnerable

position which many education workers see themselves in.

A steering committee was formed to plan the first stages of the re-launch. Hopes are that workers in all phases of education from the nursery school to the F.E. college will support the movement. If you would like to know more or are interested in the possibility of organising a regional group to tackle these issues and provide support, 'phone Anthony on (0602) 585814.



Leicester's Radical Bookshop

We stock a wide range of of lesbian & gay fiction. Also magazines and papers. Fast ordering service.

JUST ARRIVED

We now have a wide selection of Traidcraft products including gifts, cards, calendars, diaries etc.

70, High Street, Leicester
(0533) 621896

THE KINGS HEAD
Emery Lane, Boston
0205 362926

Andrew and Paul wish all their customers a merry Xmas and a gay New Year

BOSTON'S ONLY GAY-RUN PUB

LESBIAN HOUSING CO-OP

has three vacancies in shared housing in Nottingham.

For more information contact Lesbian Line
0602 410652

McGUIGAN'S BAR
Swanswell Street, Coventry
0203 222536

Open 7 nights and Sunday mornings

Monday
FUNK DISCO

Wed-Fri-Sat until 1am
DISCO

Thursday
Karaoke, bar 'til 1am
SUNDAY - DISCO

Christmas Eve & New Year's Eve - come early to avoid being refused entry

Open Xmas morning & night
Boxing Day Sunday
Open 11.30 - Bar

The staff and management wish all their patrons a Very Merry Christmas



CHRISTMAS AND NEW YEAR PROGRAMME 1993

WED 1 DEC **WORLD AIDS DAY** PINK VOICE FIRST ISSUE

TUE 2 DEC CHEAP NIGHT £1-A-PINT/ SPIRITS 2-4-1

SUN 5 DEC **KAT** - STRIPPER



WED 8 DEC **CHRISTMAS BEACH PARTY - MR PINEAPPLE COMPETITION**

HOT FUN!! - COME AS BARE AS YOU DARE!! PRIZES!! Collect an entry form.

THU 9 DEC CHEAP NIGHT £1-A-PINT/ SPIRITS 2-4-1

SUN 12 DEC **DYNAMITE** - STRIPPER



WED 15 DEC **CHRISTMAS KARAOKE NIGHT** (COME ON - SING ALONG!!)

(Plus Philip & Tony's 20th & Mad Mark & Michael's 9th Anniversary Celebration)

THU 16 DEC CHEAP NIGHT £1-A-PINT/ SPIRITS 2-4-1

FRI 17 DEC **PINEAPPLE CHRISTMAS PARTY NIGHT WITH COCK ROBIN** - STRIPPER

AND PAUL ADAMS - SINGER, CHRISTMAS FANCY DRESS COMPETITION AND FREE BUFFET PLUS - THE MALE ROOM CARD & VIDEO SHOP

SAT 18 DEC MARK'S CHRISTMAS SHOPPING TRIP TO FRANCE

SUN 19 DEC SMOOTH OPERATOR - STRIPPER

WED 22 DEC **MOPP & BUCKET** - DRAG

THU 23 DEC CHEAP NIGHT £1-A-PINT/ SPIRITS 2-4-1

FRI 24 DEC **CHRISTMAS EVE PARTY NIGHT WITH NICKI STORM** - STRIPPER, **EXTENSION 'TIL MIDNIGHT**

SAT 25 DEC **CHRISTMAS DAY** WITH DAVID'S CHRISTMAS SHOW, FATHER CHRISTMAS

AND **CHRISTMAS BUFFET - ADVANCE TICKETS £5.00** (Sunday drinking hours, but stay all day if you want)

SUN 26 DEC Closed Lunch time (if you've got any sense you'll stay in bed) - Open evening from 7.00pm



MON 27 DEC **PINEAPPLE BOXING DAY DISCO WITH THE RETURN OF LETHAL WEAPON!!!** - STRIPPER

EXTENSION 'TIL MIDNIGHT

WED 29 DEC 1st CHEAP NIGHT DRAUGHT £1-A-PINT/ SPIRITS 2-4-1

THUR 30 DEC 2nd CHEAP NIGHT DRAUGHT £1-A-PINT/ SPIRITS 2-4-1



FRI 31 DEC **NEW YEARS EVE PARTY NIGHT WITH GOLDEN BOY** - STRIPPER

EXTENSION 'TIL 1.00am (SEE 1994 IN WITH A BANG WITH US AT PINEAPPLE)

SAT 1 JAN 1994 Closed lunch time (To get over it!) - **Open evening from 7.00pm**

PINEAPPLE INN

27 BURLEYS WAY • LEICESTER

TEL: 0533 • 623384

Opposite St. Margarets Bus Station

In the 18th Century, because of a craze in pineapples, landowners began to crown their gates and corners of their roofs with stone pineapples as a symbol of hospitality. We believe that a gay bar is a place to feel at home in; where lesbians and gay men can relax, meet new and old friends, enjoy a good pint, be entertained and (probably most importantly) be assured of a warm welcome no matter who you are; and to enjoy all this at value for money prices. This is our philosophy at The Pineapple, and as far as we are concerned, is written in tablets of stone.

Philip, Mark and David wish you all a very happy christmas & a fruit-full safe New Year. May all your dreams come true!!!

HOW WE MET

Craig Williams is skilfully dodging licks from adoring animals clambering over him and his partner of three years, Roy Moseley, comfily settled in their town house in Nottingham.

All this seems a far cry from life abroad where Roy worked for eighteen years before returning to England penniless. At the time Roy was managing a hotel when one day he simply walked out and never returned. "I only had what I stood up in but with help from friends I gradually got on my feet again on my return to England."

Fast forward to the London flat on Chelsea embankment. Roy is a recovering alcoholic in a period of sobriety.

"One day I had this call through an 0898 telephone dating network from a shy young man. We arranged to meet there and then. The attraction between us was immediate." Craig cuts in: "I stayed the night and spent the next few weeks at Roy's place, eventually moving in with him. I had been slowly realising that I was gay, following a string of relationships with women. Looking through the local free paper one day I saw this 0898 ad and the rest is history."

Youth and experience often make partnerships. "Roy warned me about people on the scene, that they were after one thing only," Not for them the narrow confines of monogamy - they both say that seeing others spices up their

own relationship. They recently vowed that they would invite round all the 0898 callers that still ring and ended up with six others, plus themselves!

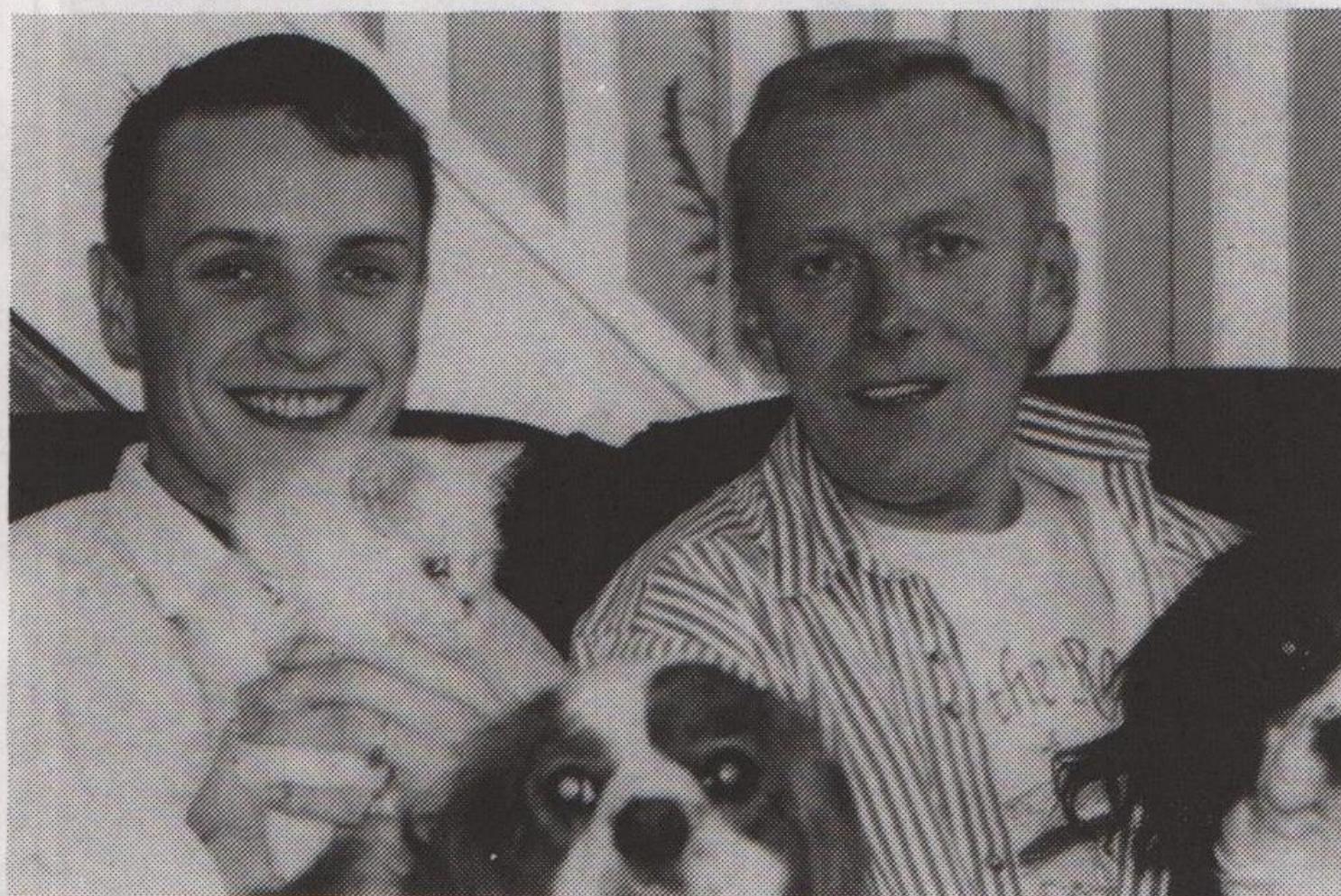
Craig is convinced that the most important ingredient in their relationship is trust. "Working in the hotel trade it

would be dead easy to find someone to walk off with" he says. "I was frightened to death", adds Roy. "In the early days of our relationship Craig would be propositioned by many wealthy people with Mayfair addresses and the Wall Street crowd. They think they have a right to all the pretty boys in town."

"We have our security, a nice home. We never go hungry. We have a joint account. I do all the buying and cooking, though we

make joint decisions right down to what we have for tea," says Roy. It hasn't always been easy for them but Roy's alcoholism has been alleviated by Craig's early grasp of the problems. Roy says he's been to hell and back but Craig's support by attending Al-Anon has been a boon to him. My philosophy has always been one day at a time. We never turn out the lights at night without sorting things out. We don't sleep on cross words", they added.

If you identify along similar lines and would like to talk to Roy you can call him on (0602) 290021.



PHOTOGRAPHIC PROJECT

Are you a disabled lesbian or gay man who would like to be involved in learning and developing photographic skills and meeting other disabled lesbians and gay men? This new project aims to explore the past and present using people's own photographs, images created by popular lesbian and gay photographers and by developing new images ourselves. Interested in being involved or someone who could be then please contact: Tessa Bartlett, 27a Access Artspace, 27a Belvoir Street, Leicester, LE1 6SL. Tel: (0533) 625025 or Jill Parker at Leicester Lesbian and Gay Centre.

Constructing Homosexuality: Beyond the Nature vs Nurture Dead End.

Ten consecutive Thursdays, beginning January 20th, 7.30pm - 9.00pm each week. Contact Kevin Crowe, WEA, 101 Hinckley Rd, Leicester. Tel (0533) 556614 £25.00 waged, £12.50 retired, £6.50

Q: WHY ARE THESE TWO CUDDLY BEARS GRINNING?



A: THEY ARE THE MASCOTS OF ONE OF EUROPE'S LARGEST GAY SOCIAL GROUPS.

Bears' Club UK - The national contact and social group for hairy / bearded / moustached guys and their admirers

An annual subscription of £9.00 brings you:

- a bi-monthly magazine,
- a discount card,
- free contact ads,
- an accommodation service,
- monthly social meetings
- and over 700 new friends!

For details, send an s.a.e. to:

BCUK, 1920 Victoria Centre, NOTTINGHAM NG1 3PN

Bears' Club UK

CHRISTMAS CAMP

An hour-long gay special, will be broadcast at 10pm, on 24th December. It stars a prestigious line-up including Andy Bell, Mellissa Etheridge, Sandra Bernhard, Ian McKellen, Anthony Sher, Pedro Almodovar, Quentin Crisp and Armistead Maupin.

G.H.Q. CLUB
LEICESTER'S NEWEST GAY VENUE

68 Humberstone Gate, Leicester

Open from Friday 3rd December

Special Live Acts over First Weekend
Open Monday to Saturday 9pm-2am

Monday night - THEMED NIGHT

Wednesday - BIRTHDAY PARTY SPECIAL

Thursday - CABARET

Fri & Sat - THE MEGA DANCE ZONE
featuring Hi-NRG, House, Garage, Dance and Pop

Membership now available, costing £5

For security reasons everyone must have a membership card.

Two types of members: paid-up and non-paid up;

paid-up members will receive price reductions on the door

Membership cards available any night from
Dover Castle, Dover Street, Leicester

VERY GOOD ROCK N' ROLL BAND ON TOUR

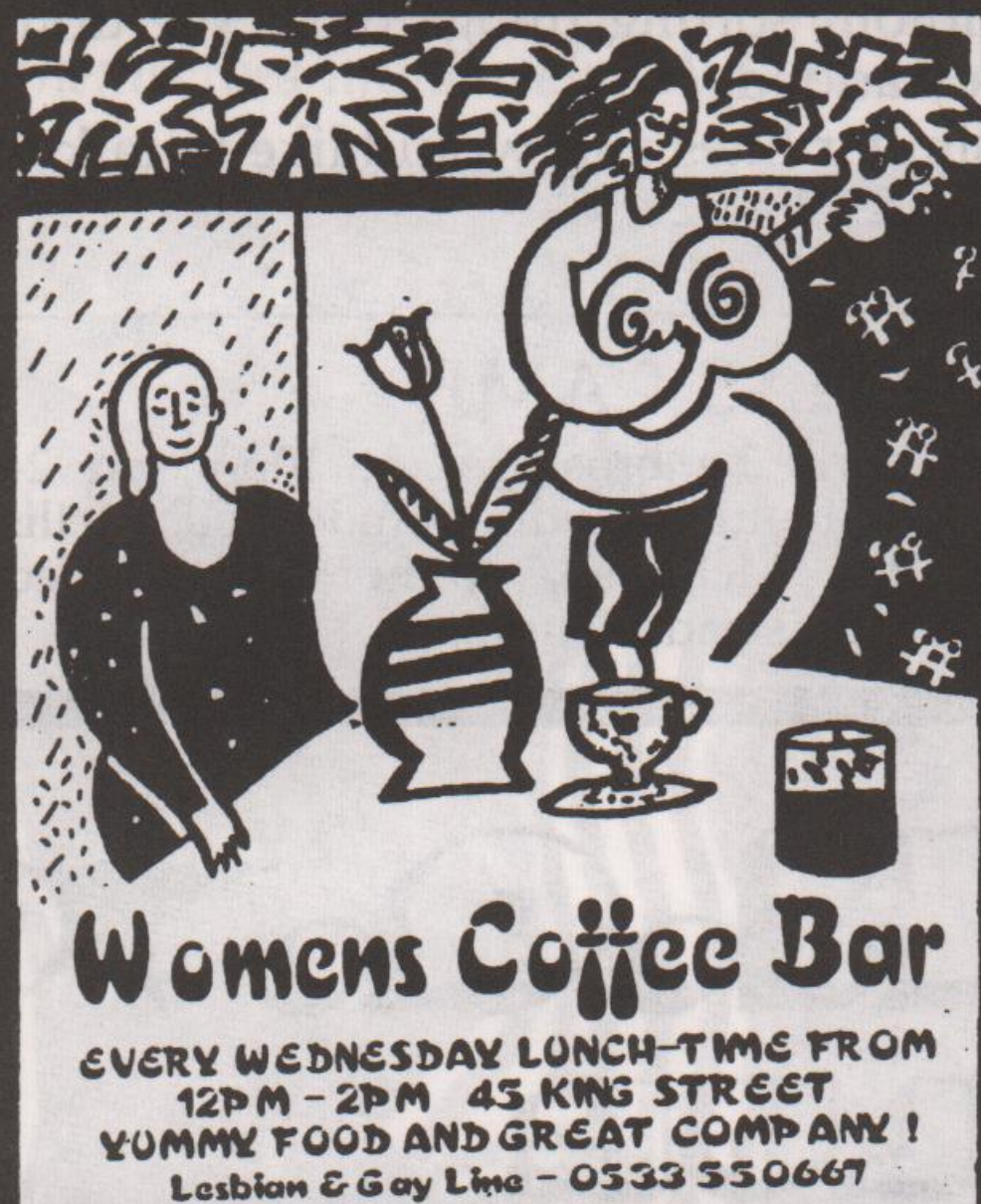


NICE ONE, SIMON

De Montfort & Leicester University's Joint Lesbian, Gay & Bisexual Society meets weekly on Wednesdays at 8pm (term time only). The group welcomes new members and non-students are more than welcome. They have a wide range of events and regular nights out. For more information phone the Society Room and leave a message for Jazz on (0533) 554860 x173 or Leicester Lesbian & Gayline.

LINCOLN BENEFITS

A Drop in Benefits Advice Shop operates every Monday afternoon at the Croft Street Community Centre in Lincoln from 2pm to 4pm. Run by David Webb it's open to anyone with a benefit problem and offers recorded information on 0522 546979



Womens Coffee Bar

EVERY WEDNESDAY LUNCH-TIME FROM
12PM - 2PM 43 KING STREET
YUMMY FOOD AND GREAT COMPANY!
Lesbian & Gay Line - 0533 550667

METRO CINEMA

Green Lane Derby: box office (0332) 40171

THE WEDDING BANQUET

Dir: Ang Lee/Taiwan-US/1993/108 mins
Taiwanese born Gao Wai Tung shares his life and Manhattan apartment with his lover Simon but faces pressure from his parents back home to settle down and get married. In order to pacify them he arranges a marriage of convenience with Wei-Wei, an illegal student in need of a green card. Unfortunately, Wai Tung's parents decide attend the wedding ceremony and things begin to get out of hand. Director Ang Lee sets a raucous pace as the cast descend into a web of lies, misunderstandings and revelations.
Friday 3rd - Thursday 9th December
Fri & Sat at 6.15pm/8.30pm, Sun at 6.00/8.00pm, Tues - Thurs at 6.30pm

THE CEMENT GARDEN

Dir: Andrew Birkin/GB-France-Germany/105 mins.
Taken from Ian McEwan's shocking first novel, this story of teenage sexuality tackles the themes of incest and death with considerable discretion. After Julie and Jack's father dies, their mother loses the will to live. In order to avoid being put in care the children bury her body and

pretend she is still alive. Free to behave as they wish, their lives revolve around their developing sexuality.

Tues 4th - Thurs 6th January, 7.30pm

ACCION MUTANTE

Dir: Alex de la Iglesia/Spain/1992/95mins.
The year is 2012 and the world is ruled by mineral water sipping, designer clad body beautifuls. The lone voice of dissent comes from Accion Mutante, an underground band of mutant revolutionaries, who plan to kidnap the daughter of an evil millionaire and whisk her away to an off-world mining colony where no woman has been seen for centuries.
Fri 7th - Sat 8th January, 11.15pm.

RESERVOIR DOGS

Dir: Tarantino/USA/1992/90 mins.
In true independent style, Tarantino draws from a wealth of great films from Sam Peckinpah to John Woo's 'The Killer', to fashion a breathtaking heist movie with Keitel and a host of the hottest character actors around answering all questions but one - who shot nice guy Eddie?
Fri 14th - Saturday 15th January, 11.15pm.

ORPHANS OF THE STORM

D W Griffith's 1921 masterpiece starring Lillian and Dorothy Gish and Joseph Schildkraut is being shown on the silver screen at Stanford Hall Theatre on Thursday 16th December.

About two sisters caught up in the French Revolution of 1789, this celebrated film is noted chiefly for its careful attention to historical detail and the excitement of its crowd scenes.

Stanford Hall Theatre is one of the few remaining art deco theatres still in its original state, its walls and ceiling decorated with murals borrowed from Greek legends.

The evening begins at 7pm when the Wurlitzer organ, brought from the Madeleine Theatre in Paris in 1937, rises from the floor. The film begins at 7.30pm with piano accompaniment. The theatre also has a bar which will be open at the interval and after the performance. An evening of camp. Period dress optional!

Stanford Hall Theatre is at the Co-operative College, Stanford Hall between East Leake and Loughborough. Tickets £2.50/1.50 in advance from Lavinia on 0509-852333, but hurry. Outright also has ten seats reserved: phone 0602-780124 for your reservation.

The Dover Castle

Dover Street, Leicester

Leicester's premier gay venue

Mal, Dave and William

wish all their customers old and new a Very Happy Christmas and a prosperous New Year

THE ADMIRAL DUNCAN

Lower Parliament Street, Nottingham, 0602 502727

CHRISTMAS EVE 8pm-1.30am

"Stripping the Tree"

Prizes, Extravaganza and Party

NEW YEAR'S EVE

Have your biggest Bang of the Year, with the campest goodbye to '93 8pm-1.30am

Open Christmas Night from 8pm and New Year's Day, 8pm to 1.30pm with a Stripper at 12 midnite

SAMPLES by Simon Smalley

WHEEL ME OUT

Oh, my Aunt Fanny! Why? I mean, WHY? At his age an' all! How much speed did they have to pump into him to wake him up? Creaking like an un-oiled gate, ol' Bleary Eyes Frank Sinatra has been let out to release an album of duets, bizarrely titled 'Duets'. A rather dubious line-up backs this equally dubious idea including Luther Van-Dross and Babs Streisand and each track really sounds like they weren't actually together when it was recorded. The Streisand track sounds so corny I'm surprised they didn't drag Michael Crawford along to help murder it as well. And who, apart from Sinatra, out of tune and out of touch as ever, would call a woman a 'chick' in 1993? I accept that over the years people have been duped into believing Sinatra has a good vocal range (or any vocal range at all) but, with apologies to Nick Lawton, our cat farts more musically than this old codger croaks. It sounds like your Uncle Nobby on Christmas Day afternoon, swimming in cheap wine and slurring along to Karaoke tapes. Dreadful. File next to Sarah Brightman.

LEGALISE IT

On the other hand, Mary Jane space cadets and interplanetary dub-gods The Orb return to our shores with a live album that puts Pink Floyd's mid-70's trippy excesses to shame. Recorded at earthbound locations including Tokyo and Copenhagen, these live mixes are quite simply mind-bending, where the familiar become the unfamiliar; illustrating their unique on-site improvisational abilities and Dr. Alex Patterson's voluminous knowledge and appreciation of late 70's dub. Recently, many mimic their stoned excursions, but with this as a precedent, none can splash the surface of hypnotic mind-mashes called The Orb. Sit back and set the controls for the heart of the sun!

Have a Cosmic Christmas!



MAN OR MOUSE?

Phil Collins - now, there's a man who doesn't need the cash, but sure could do with some musical enlightenment, judging by his latest LP. Re-awakening, after nodding off 1 minute 34 seconds into the opening track, I was hardly surprised to discover the remainder of this pompous, goody three shoes dirge is an endless re-run of his first album - and equally appalling. Full of 'adult' heartbreak and insincere, world conscious moneygrabbing crap, 2ft 10 Phil simply bolsters the image that he is an irritating little man with an irritating little voice. Next!

WOW! UNBELIEVABLE!

Some fifteen years into her ever-stimulating career, the continually maturing Kate Bush presents 'The Red Shoes', her seventh album proper and upon production we find a dozen tracks which her dedicated legions of fans will adore and most others will get a kick inside from. Rich and intense like an ancient tapestry, Kate's own languidly lush production makes almost every track a triumph. After energetically kicking off with the slightly disappointing 'Rubberband Girl' single, it rapidly reclines into familiar K.B. style. Personally, I'd relish the album more sans 'Rubberband' and 'Eat The Music', the latter falling into a low-rent Peter Gabriel/Paul Simon World Music-y mistake. Making amends, however, are 'Top Of The City' and the finale 'You're The One', which in its atmospheric intensity adopts and almost medieval slant. For me, this is her best since 'Never For Ever' and proves that Kate Bush is one of the UK's more creative and perpetually original artists.

VOLUNTEER CO-ORDINATOR for BESTWOOD VOLUNTEER PROJECT JOB SHARE (22 hours per week) Salary Scale: APT & C scale 5 (point 23) currently £13,002 pa (pro rata)

Bestwood Volunteer Project was set up on 6th Jan 1992 to help and encourage volunteers (unpaid workers) to use and have confidence in their own skills. The worker is expected to team work with unpaid workers and to help facilitate this process.

The post which is for 22 hours per week is funded by the Consortium on Opportunities for Volunteering until 31st July 1994.

The person appointed will job share with the current worker who also works 22 hours per week and has been in post since the Project started.

The post provides a link between existing and potential volunteers and individuals and groups needing volunteer support on Bestwood estate. The Co-ordinator must be able to organise her/his own work load, to assess volunteers, to encourage and enable them to develop their skills and confidence, and to develop good networks.

No formal qualifications are needed but experience (paid or unpaid) in the voluntary sector is essential. It is also essential to have working experience of anti-oppressive practice with an understanding of equal opportunities.

All applicants are welcome regardless of gender, race, sexual orientation, religion or disability (wheelchair access is restricted at the current office space and there are no adapted toilets for people with mobility difficulties). We are working towards being an equal opportunities Project.

For details and a form write to:

Bestwood Volunteer Project, St Matthias Church Hall,
Padstow Road, Bestwood Estate, Nottingham, NG5 5GH.
Tel: 0602-750215.

Closing date for applications: 1st post Friday 17th Dec 1993.

Interview date: Friday 7th January 1994.

HYSON GREEN WHOLEFOODS

Mon-Sat 9.30-6
(Thurs/Fri till late)

WE SELL
ENVIRONMENTALLY SAFE
& CRUELTY FREE
CLEANERS AND
TOILETRIES, A GOOD
SELECTION OF HERBS &
SPICES, FRESH BREAD AND
A WIDE SELECTION OF
SNACK FOODS.
ORDERS TAKEN

72 RADFORD ROAD
NOTTINGHAM 0602 702056

BARRIE WARD & JULIAN GRIFFITHS

SOLICITORS

5, Clarendon Street,
Nottingham, NG1 5HS.
Telephone (0602) 412622
After hours (0602) 602324

MASSAGE

Derby area - full
personal relaxing
massage by
friendly mature
masseur. Stiffness
relieved and
tension released.

Seven days
anytime for special
offer (0773) 825230



We personally deliver
flowers and gifts for any
occasion throughout
Nottinghamshire and
Lincolnshire and can
arrange nationwide and
worldwide delivery via
teleflorist.

Phone or fax us on:
0476 79742



18 London Road,
GRANTHAM
Lincs, NG31 6EY.

classified...classified...classified...classified...

HOW TO REPLY. Seal each reply in a separate envelope. Write the number of the Box you are replying to in the top right hand corner of each envelope. Place them in a larger envelope. **Enclose two loose first class stamps for each reply.** Address the outer envelope to **Outright**, stamp and post to PO Box 4, West PDO, Nottingham NG7 2DJ.

MENS PERSONAL

BOX 1701 (GAY MALE, 28, inexperienced but caring and loving. Seeks romance, cuddles, fun...) Please write to PO Box 4, West PDO, Nott'm, NG7 2DJ. Replies waiting for you.

EAST MIDLANDS, 35, active, hairy, 6'2", attractive, fit, seeks passive, not camp, man for good times, hopefully 1-1. Non-smoker, non-scene pref. You 25-35. Photo a must. Box 1773.

SOUTH YORKS/ANYWHERE, English White male, slim, young 40s, own place. Into weight training, disco, foreign travel, seeks guys from anywhere overseas. White/Black/Arab/anywhere here. 21+, meetings, friendship. Box 1774.

NOTT'M, 37, seeks romantic, affectionate, intelligent, humorous, special guy to love. Could it be you? If you are 30+ I would like to hear from you. ALAWP. Box 1775.

DEAF GUY FROM LEICS. Kevin from B'ham who called my flat on 5th Nov: I need him to write me soon with his address. Box 1776.

GAY GUY A-Z. Interests A-Z seeks new friends fro friendship, outings. Straight acting/looking, vgsch, photo apprec. Will travel. Come on guys, you've nothing to lose but perhaps something to gain. Box 1777.

LINCS/ANYWHERE, 40, very slim and passive seeks older active men for fun, poss 1-1. Photo would be nice, mine in return. Box 1778.

LEICS/ANYWHERE, male, 30. Adventurous, honest, caring, gsoh, enjoys cinema, theatre, music. Seeks guy 21-30 with similar interests for friendship, poss 1-1. Your photo gets mine thought ALA. Box 1779.

NOTT'M GUY, young looking 53, dark, slim, quite hairy, wants down-to-earth friend for fun, outings, maybe more. Box 1780.

LEICS AREA/ANYWHERE, caring, chunky, 50, seeking hairy (not essential) non-smoking guys 35-55. Exchange visits for friendship, poss relationship with special mate. Please write fully with photo. ALAWP promise! Thank you. Box 1781.

STUDENT (NTU) overactive soh, loves sci-fi, movies, romance. Lonely, stranded, new to Notts... save me, be my friend!! Unshockable, confidence guaranteed. Box 1782.

NOTT'M/MIDLANDS AREA. Bearded guy, 29, 6', smooth, medium build, brown hair. Looking for bearded guys up to 50 for fun and friendship. Likes pubs, clubs, staying in. ALAWP. Box 1783.

SOUTH YORKS/SURROUNDING, 30, slim, short dark hair, 5'10", not bad looking, intelligent, gsoh, non-smoker, looking for non-scene, medium built long-term partner, friends first. Photo apprec. Box 1784.

NOTTS/DERBY LAD, 27, straight acting, into body building, seeks similar lad for friendship and work outs together 21-35. Box 1785.

DISABLED straight acting horny gay guy, 39, 5'5", brown hair, green eyes, vgsch, own place, seeks guys 21-45 for fun, friendship, hopefully 1-1. Can accomm but not travel. Sheffield/anywhere. Box 1786.

MARKEATON PARK 7/9/93. Mid aft. You black leather-clad biker exchanged glances and nods. Me, young & gen. lycra cyclist/leather gloves. NOTT'M area. Please get in touch. Box 1787.

WHITE BEARDS/TACHES turn me on! 34 year old seeks mature men for occasional but passionate meetings. Nott'm area pref but willing to travel. Varied interests, nothing heavy. ALAWP. Box 1788.

I am Chris, 32, green eyes, mousey hair, 5'10", slimmish, smooth. Looking for someone 20-30s for 1-1, swimming, weights, meals out, 70s music. 0602-305326 all day or Box 1789.

MELTON MOWBRAY, 30, seeks straight acting guy 25-35 for outings and genuine friendship only. Box 1790.

NOTT'M/ANYWHERE guy, 5'10", 34, enjoys pubs, clubs, cosy nights in, being loved, seeks younger guy with similar interests for fun, friendship leading to 1-1. ALAWP. Photos ret'd. Box 1791.

HORNY GUYS wanted for hot safe fun by passive guy in his thirties. East Midlands/anywhere. ALAWP. Box 1792.

NOTT'M/ANYWHERE, gay guy would like to buy your unwanted gay videos for private use. Please send list and price. Also any unwanted mags. ALA. Box 1793.

CENTRAL ENGLAND, gay, 21, looking to meet loads of new friends. New to Derbys. Have own house and car. Photo apprec, 17-23. Take advantage and write soon. ALA. Box 1794.

LEICS/ANYWHERE, slim, fit, healthy, passive, 53, many varied interests, seeks active slim-medium 26-45 for friendship-relationship. I'm reliable, caring, reasonable looks, gsoh. Box 1795.

NOTTINGHAM/ ANYWHERE.

Gay male, youthful 50s, gsoh, seeks friend(s) 25+. Interests theatre, eating out, days out. If you are active, looking for a genuine friend, I'm your man. Photo/phone if possible please. ALA. Box 1796.

EAST MIDLANDS GUY, 40, good looks and build, non-scene, w/e, sincere, seeks non-scene guys for fun, massage, poss relationship. No time wasters. Tel no. please. ALA. Box 1797.

LINCOLN AREA, 28 year old, bored, lonely, fed up of let downs, seeks lasting 1-1, active, caring, own home and car. Write with photo for guaranteed reply. Box 1798.

NOTTS, 30, 5'6", smooth, willing and starving. Please write encl. phone no. Waiting for you, 21-35, now. ALA. No time wasters. Box 1799.

GRADUATE, 24, new to Nott'm. Seeks friends for days out, nights in and weekends away. Likes pubs/clubs occasionally. Wants to work out but lacks training partner. Photo apprec. Box 1800.

YORKS/MIDLANDS, good looking guy, 36, own place/car, seeks straight acting, slim, manly guys (21-29) for fun/friendship, maybe 1-1. Many interests, find out more. Any race/colour. Photo please. Box 1801.

NOTT'M, two attractive, free thinking, smoking vegetarians, seeks fun loving others who like a pint or two and a good laugh at weekends. Photo helps. ALA. Box 1802.

LEICS COUPLE, 47/53, slim, keen naturists, into massage, photog, and having fun, seek like minded mates for good times together, couples or singles. ALAWP. Box 1803.

MANSFIELD GAY MAN, 39, wishes to meet young gay, smooth, boyish lad under 25 for nights out/in. Box 1804.

NOTT'M, 22 year old wanting to meet people in the same age group for

fun, friendship, poss 1-1. Photo please. Box 1805.

LEICESTER, kindly English uncle seeks Oriental nephew to love and pamper. If you're shy or lonely I'll show you round and help you feel at home here. Box 1806.

BEESTON, Notts. Couple, 30/40s, would like to meet other local guys to find out if there is life outside the Nott'm 'scene'. Let's meet. Postage refunded!! ALA. Box 1807.

SLIM, SMOOTH, 22, blond, deep blue eyes, longs to move within the compatible mind and touch the erotic dream of a lover. Can you give a different kind of kiss? Can you move in a masculine kind of way? Box 1808.

LEICESTER, Indian, 35, 5'7", smart, slim, shaven, neck to toe, seeks active friends/riders, white. Unshockable. Will try anything safe. Also toys. Try me. Phone no. please. Also bi's welcome. Box 1809.

NOTT'M. Me: 47, non-camp, caring, loyal and sincere. You: 25+ and similar. ALA. Box 1810.

NOTT'M, 28, dark hair, 5'11", free thinking, intelligent, vegetarian male, seeks life-loving guys, for fun, friendship etc. ALA. Photo apprec. Box 1811.

NOTT'M, 34, not bad looking, non-scene/camp, romantic, caring, loving guy, fed up with being used, seeks 1-1 with equally loyal, honest person. Looks unimportant. Genuine replies only please. Box 1812.

NOTT'M, 42, medium build, straight acting, seeks 35+ for fun, friendship. Share holiday abroad, hopefully relationship. Detailed letter, photo ensures reply. ALAWP. Box 1813.

GAY, 23, seeks 21-44 for relationship in Nott'm area, someone who has own car and place, someone who is good looking as I am, someone who is loving. Box 1814.

REPLYING TO AN AD?

Please read **HOW TO REPLY** carefully, p 12. Replies without 2 first class stamps will not be forwarded.

SHEFFIELD/S YORKS, young 34, 6', slim, fair OK looks, passive, loving, seeks younger active w/e "MAN". To have fun and share life with. Perhaps student wanting secure home. ALAWP. Box 1817.

CAMCORDER ENTHUSIASTS, (30S-40S) will video your Xmas party etc absolutely free! ALAWP. Nott'm/Leics/Derby. Box 1818.

LEICS, 36, Indian, good looking, medium build, seeks hot, horny singles/couples for friendship & fun filled evenings. No strings. Detailed letter/phone no. please. Prefer Leics area. Can travel/accomm. ALA. Box 1819.

AM I TOO OLD at 60? Professional gent, South West coast, seeks friends any age, colour or creed. Box 1820.

SHEFFIELD/EAST MIDLANDS, slim guy, late 40s, looking for friendship plus, leading to 1-1 with right guy. Can accomm or travel. ALA. Box 1821.

NOTT'M GUY, 33, medium build with honest, caring and sensitive nature wishes to make new friends. Deaf people most welcome. I am learning BSL so help needed. Lesbians welcome. ALA. Box 1822.

LEICESTER, second slim male partner needed to fulfil 80% passive side of my sexuality. In a shared long-term, clean, caring relationship based on fun, love and equality, aged 22-29. ALA. Box 1823.

NOTT'M BASED, tall dark haired art student looking for sincere like-minded, pref local based, for friendship, exotic nights out/in and poss relationship. Box 1824.

NOTT'M AREA male, 5'8", slim, 26, Black, intelligent, seeks Black guys/Whites for fun/friendship, poss 1-1. Into dance music, clubs etc. Non-smoker & vegetarian. ALAWP. Box 1825.

NORTHANTS, attractive, 23, enjoys pubs, clubs and quiet times in good company. Seeks similar 21-35 for fun and friendship, maybe more. Genuine replies only please, photo apprec. Box 1826.

DONCASTER, young looking gay guy, 22, slim, brown hair, blue eyes, seeks gay guys of similar age for fun and friendship. Box 1827.

NOTT'M, 28, student (Nott'm Uni), Indian, 5'9", m'tached, straight-acting. Discreet. Many interests, seeks any race/colour under 40 for fun and friendship. Photo apprec. Box 1828.

LEICS GUY, 45, easy going. Many interests, seeks guys for friendship and fun. Married or single. Can accomm. Box 1829.

NOTTS, gay male 26, 5'11", slim build, fairly attractive, bubbly personality, very stable, loving nature. Likes outings, shopping, music from Connie Francis to Dannii

HELPLINES

BIRMINGHAM BLACK LESBIAN & GAY GROUP, 021-622-7351 for details.

COVENTRY FRIEND, Mon, Wed, Fri, 7.30-9.30pm. 0203-714199.

COVENTRY LESBIAN LINE, Wed, 7-9.30pm. 0203-717166.

COVENTRY MESMEN, 0203-224090.

DERBY BODY POSITIVE, Tue 10.30am-1.30pm, Thur 11.30am-4pm, 0332-292129.

DERBY FRIEND, Wed, 7-9.45pm. 0332-49333.

DERBY LESBIAN LINE, Wed, 7-9pm. 0332-41411.

DERBY AIDSLINE, Mon-Fri, 7-9pm, & Thur, 2-4pm. 0800-622738.

JEWISH LESBIAN & GAY HELPLINE, Mon & Thur, 7-10pm. 071-706-3123.

LEICESTER LESBIAN/GAYLINE, Mon-Fri, 7.30-10.30pm. 0533-550667.

LEICESTERSHIRE AIDS SUPPORT SERVICES, Mon-Fri, 9.30am-5pm. 0533-559995.

LINCOLNSHIRE AIDS VOLUNTARY GROUP, Mon, Wed, Fri, 9am-9pm, & Tues, Thur, 9am-5.30pm. 0522-513999.

LINCOLNSHIRE LESBIAN & GAY SWITCHBOARD, Thur & Sun, 7-10pm. 0522-535553.

NATIONAL BISEXUAL PHONELINE, Tue & Wed, 7.30-9.30pm. 081-569-7500.

NORTHANTS GAYLINE, Tue 6.30-9.30pm, 0604-39722.

NORTHANTS LESBIAN LINE, Tue 7-9.30pm, 0604-39723.

NOTTINGHAM LESBIAN & GAY SWITCHBOARD, Mon-Fri, 7-10pm. 0602-411454.

NOTTINGHAM LESBIAN LINE, Mon & Wed, 7-9pm. 0602-410652.

NOTTINGHAM FRIEND, Tue, 7-10pm, 0602-474717.

NOTTINGHAM UNIVERSITY LESBIAN & GAYLINE, termtime Mon, 8-10pm. 0602-514999, internal 4999.

NOTTINGHAM GAY & LESBIAN YOUNG PEOPLE, Thur, 7.30pm-10pm, 0602-417779. Other times answerphone.

NOTTINGHAM AIDS INFO PROJECT, Mon-Wed & Fri, 9.30am-1pm, 2-5pm, 0602-411989. Other times answerphone.

SHEFFIELD AIDS LINE, Mon-Thur, 7-10pm. 0800-844334.

SHEFFIELD LESBIAN LINE, Thur, 7-10pm, 0742-581238.

SOUTH STAFFS FRIENDS, Wed, 7.30-9.30pm, 0889-570095.

WELLINGBOROUGH GAYLINE, Thur, 6.30-9.30pm, 0933-223591.

IN DISTRESS, Lesbian & Gay Mental Health Group, 021-622-6589.

Minogue., nights in/out, good food etc. Box 1830.

SHEFFIELD/DERBYS, young cute guy, tall, slim, passive, clean shaven, skin/h, seeks

classified...classified...classified...classified...

OUTPOST!

Now you can have **OUTRIGHT** delivered by post in a plain sealed envelope. Especially useful for keeping up with the classifieds. Send £4 cheque/postal order for 12 issues to **OUTRIGHT**, Box 4, West PDO, Nottingham, NG7 2DJ.

active guys 21-55 for fun. Seriously into baked beans. Lets spend windy times together. Photo/phone please. ALA. Box 1831.

DARK HAIREGUY, 5'10", 34, enjoys pubs, clubs, seeks younger guy for loving, lasting committed relationship. Genuine replies only. ALAWP. Box 1831.

21 YEAR OLD Nott'm student, new to area, seeks friends, scene or non-scene, for friendship and fun. Interests, cinema, music, travel. Photo apprec! Box 1832.

GOOD LOOKING slim w/e single guy 21-35 sought by attractive non-scene couple into 3 way fun. No strings. Frank letter with photo to get reply. Box 1833.

SPORTS GUY (Notts/Derbys) seeks similar OK guys into outdoors squash/weights etc. Beginners welcome. Rugger/soccer fans welcome. Get in touch. Box 1834.

SHEFFIELD/CHESTERFIELD. Gay, kind male, 28, 5'9", enjoys music, cinema, country walks, quiet nights in, needs similar pref sensitive, romantic and affectionate to fill a lonely life. Photo/phon apprec. Box 1836.

NOTT'M GUY, 5'8", medium build, smooth, active, into photography, massage & many others. Seeks guy early 20s, 5'4"-5'8", hairy. ALAWP. Phon no. Any race/colour welcome. Box 1837.

DERBY, 26, 6'6" tall, medium build, w/e, No 2 crop, likes rubber, denim, leather, DMs, lycra, seeks like minded guys for fun and friendship. Frank letter/photo ALA. Box 1838.

TWENTY SIX year old, brown hair/eyes, seeks similar age, clean shaven, for 1-1 or to widen circle of friends. Enjoy evenings out/in, theatre, pubs, clubs etc. Genuine and sincere. ALAWP. Box 1839.

MANSFIELD AREA, first advert. Male, 29, seeks similar for friendship, relationship. I am very loving and caring with a good sense of humour, medium build, brown hair/eyes. ALA. Genuine. Box 1840.

NOTT'M Christian gent, 60s, interests 30s-40s music, yoga, seeks younger or similar for friendship first. Box 1841.

NOTT'M, tall, fait, handsomish professional, young 45, seeks friend for theatre, walks, eating in/out, holidays, pubs. Friendship more important than sex. ALAWP. Box 1842.

EAST MIDLANDS. Boyish nephew 25-30 straight acting into spanking/strap/snugly fitting black trousers/shorts wanted to visit friendly uncle, 40s. Full details with clothed photo gets reply. 1st ad. Box 1843.

GAY MALE, 28 years old, caring, slim, fit, friendly, tall, attractive, brown eyes, seeks good looking guys. Photo ref'd. Fun & friendship req'd. Interests swimming, theatre. Write soon. ALA. Box 1844.

NORTHANTS MALE, 40, interests gardening, music, theatre, arts, would like to meet similar for friendship. I am medium build, non-smoker, own business and home. Box 1845.

WHAT ARE YOU DOING this Christmas?

Young good looking n/s guy (East Midlands) seeks festive kisses, cuddles and caresses. You: 22-38, a great personality, intelligent and decent looks. Get writing! Box 1848.

NOTT'M, 27, masculine, good looking, offers comfort, stability, security, lots of love to boy-next-door-looking lad 21-30. Genuine replies only. Photo please, mine by return. ALA. Box 1847.

NOTT'M, good looking 35, 5'10", dark hair, blue eyes, straight looking, sincere, gsoh, into theatre, cinema, seeks handsome masculine non-smoking guy 28-35 for friendship/

relationship. Genuine ad. Photo please. Box 1849.

NORTH NOTTS, married, 48, medium build, 5'6", non-smoker, discreet, reliable, non-scene. Interests include theatre, music, gardening, travel. Seeks sincere guy to share mutual interests and safe fun. ALA. Box 1850.

MANSFIELD, 35 year old male, dark hair, non-camp, looking for friendship/poss relationship. Must be aged 25-35. Photo please. Box 1851.

MIXED PERSONAL

SPERM DONATION. Sperm donor available for single/couple lesbians. Already hospital donor (straight). Blond/blue eyes, healthy, intelligent, very high 'count'. Send informative letter, in confidence. Box 1815.

SHEFFIELD/ANYWHERE, single guy, slim, 48, can accomm, seeking attractive bi-guys, male/female couples for relaxing good times together. I can travel. Also for socialising. Frank letters please. ALA. Box 1816.

LEICESTER/ANYWHERE, male, 30s, seeks friends male or female for friendship, outings, movies, theatre etc. Box 1846.

REPLYING TO AN AD?

Please read **HOW TO REPLY** carefully, p 12. Replies without 2 first class stamps will not be forwarded.

WOMENS PERSONAL

NOTTS/DERBY, femme, attractive lesbian seeking professional tender, loving femme, 25-45. Must be sincere and want a passionate, romantic relationship. N/s. Interests arts, drawing, painting, cinema. ALA. Box 1291.

BI-FEMALE, 25, 5'3", shy, inexperienced. Likes music, cinema, pubs. GSOH. Seeks other bi-female 25-35 for fun, friendship, poss more! Photo apprec. Mansfield/Ashfield/Notts area. Looking forward to replies. Box 1292.

LINCS/ANYWHERE, lesbian couple wish to meet similar for friendship. Interests amiga computer music, all types, love animals. Our ages 37 & 47. ALA. Box 1293.

LEICS gay female, early 30s. Varied interests. Feminine. Seeks similar for friendship/relationship, 28-40. Pref non-smoker. Leics area. Box 1294.

CHESTERFIELD, 46, wishes to meet single women. I like music and animals and most things in life. ALA. I am a very caring person, so do drop us a line. Box 1295.

GAY FEMALE, 30, looks younger, feminine, caring, honest, loving, seeks feminine, attractive, genuine woman for friendship/relationship. I'm attractive. Lincs. No bi's. Box 1296.

GOOD LOOKING lesbian, 24, feminine and funloving. Honest and sincere seeks boyish female who loves life and needs loving. Notts/Derby/Leics area. Box 1297.

LEICS LESBIAN, 33, mixed race, dark and lovely, enjoys pubs, clubs, dancing, sport, seeks new friends poss lover with gsoh. Must live within Leics area. Box 1298.

BORED AND UNHAPPY lesbian. Needs sheering up. Anybody out there willing then please write to me. Box 1299.

GENUINE Leics female aged 34, cute but cuddle-less! Can you possibly supply me with much needed cuddles in return for big bear hugs? GSOH. ALA. Box 1300.

LEIC DOUBLE BED like giant football pitch. Want company. Too soon for love? If we don't fancy it we can go down the pub and get pissed. Mine's a pint. Box 1301.

EAST MIDS/LINCS lesbian couple. Varied interests, 30 & 40s age group. Seek friends for socialising, evenings out and friendship. Box 1302.

CAN YOU MEND my burst bubble? Lonely but loveable and caring lesbian aged 23 looking for fun and frolics. 16 day cuddle back guarantee if not suitable. Please reply. Box 1303.

VERY UNHAPPY lesbian. Caring, romantic, sincere, genuine, gsoh, non-smoker seeks same for 1-1, 30-43. Varied interests, animal lover, photo apprec, not butch. No

bi's. Genuine replies only. write today. Box 1304.

GAY FEMALE COUPLE seek new friends 20s/30s for evenings out, meals, walks, conversation and mutual supportive friendship. Honest and sincere. Derby/anywhere. Box 1305.

FEMININE LOOKING lesbian seeks penpals and friendship from all different areas. I'm 26, you're any age. Reply soon. Box 1306.

LEICESTER. Gay female, 21, boyish looks, butch, looking for other lesbians between 18-30 for 1-1 relationship. GSOH. Loves pubs, clubs etc, animal lover as well. Photo apprec. Box 1307.

LIFE BEGINS AT \$. So is there anybody out there to show me a good time who is honest, genuine, for friendship/relationship. Smoker. Derby/Notts. Box 1308.

DERBYS gay female, 48, wishes to meet single and married. I enjoy most things in life. I've no hang ups. Honest, reliable, also non-smoker. ALA. Box 1309.

DERBY/NOTTS/LEICS, easy going, sense of humour, enjoys cinema, sport, driving, evenings in listening to music. Seeks someone to care who's interested in similar. Non-smoker, outgoing personality, loving. Box 1310.

NOTT'M LESBIAN, young 44, sense of humour, sincere, seeks 1-1 relat. Music, theatre, books, cinema, walking, cosy evenings, countryside. Any age. Non-smoker. ALA. No bi's please. Write today. Box 1311.

EAST MIDLANDS, sincere, sensitive, caring, feminine, slim, non-smoker, varied interests, music, driving, walking, cooking, loving, vgsoh, looking for that special person 30-40. Box 1312.

EIGHTEEN YEAR OLD bisexual, shy but outrageous rugby player. Looking for someone for cinema, pub and other outings. South Yorks area. Box 1313.

WANTED! Gay female, attractive, fun loving, adventurous, gsoh, for a sporty, mid 20s, slim woman who likes travel, pubs, clubs, love and romance. No bi's. Photo apprec. East Midlands. Box 1314.

NOVICE LESBIAN, 28, seeks pen friends and possible relationship. Box 1315.

LEICS, woman, 37, attractive, caring, genuine, romantic, gsoh, enjoys meals in/out, likes sport, animals, socialising etc. Seeks similar. Box 1316.

ANNOUNCEMENT

MANSFIELD AREA, second advert. Males under early 30s wanted for friendship, poss relationship. If photo incl, will set up gay group meetings if enough write. Box 1835.

HOW TO PLACE AN AD. Complete and return the form below. Write clearly please. Maximum 30 words.

OUTRIGHT reserves the right to refuse or amend ads. Each ad will appear in one issue. Good luck!

CLASSIFIED ADS

Complete and return to **Outright**, PO Box 4, West PDO, Nottingham, NG7 2DJ.

Mens Personal..... Womens Personal..... Mixed Personal..... Accommodation.....

Name.....

Address.....

Post code.....

ACCOMMODATION

Advertise your accommodation wanted/offered using the classified ad form. Include your address or phone number in ad for quick replies or let us provide a box number free.

Accommodation files are also kept by Nottingham Lesbian and Gay Switchboard, Derby Friend and Leicester Lesbian and Gayline: see the helpline panel on page 12.

LEICS, Oriental/ overseas student offered accomm hse share with owner. Col tv, computer, laundry, warm & friendly, near Poly, not far Univ. Own room. Box 612.

NOTTS/DERBYS, room in gay h'h for lesbian, non-smoker. £35 pw+bills. Deposit req'd. Must like children. Working or mature student consid'd, 25-40. Box 613.

BISEXUAL WOMAN seeks room in friendly queer h'h in Sheffield, pref S7/11. Feminist, easy going. V sociable but needs privacy. Good cook. From Jan '94-July '95. Box 614.

BURTON ON TRENT, room avail to let, £45 pw. No bills. Use of all mod cons. Working woman. Tel 0283-511209.

LINCOLN, house share, own room, suit working gay/lesbian or bi. All mod cons incl £40 pw. Tel extra. Phone for chat 0522-529967.

LODGINGS. Nott'm 10 mins city centre. Own bedroom, use of fitted kitchen. £35 pw incl +phone. Working only. Box 617.

NOTT'M, own room, hse share. 5 mins walk city centre. All facs, £40 pw incl. Tel 501590.

MANSFIELD AREA, room to let, ensuite spacious, all mod cons. Share with owner mid 20s and 4 cats. M/F, pets, no pref. Lge gdn, solarium. Phone in room. Bryan 0623-825016.

BEECHDALE MEWS, share lux hse, own dble room, sat tv, ans/phone, w/machine, d/washer, micro, fch with young couple, male. £55 pw incl. No bills. Deposit req'd. Negot. Roy/Craig 0602-290021.

SLEAFORD, Lincs. Over night accomm, comf flat. Discretion, massage, videos. 0529-414054

ILKESTON, accomm to let. Male or female to share comf terr hse with owner, pref 25+ & working. Ilkeston 307644.

LEICESTER, rm avail in 2-bed flat, N side city. All mod cons, shower, video, phone. Main bus route, car park. £120 pcm incl. Tony 0533-365020 eves.

LEICS, rm to let in nice 2-bedrm flat. All mod cons, parking, nr shops & main bus routes. £35pw. Eves/weekends 0533-367276.

COPY DATES

No. 45: 31st Dec

No. 46: 28th Jan

No. 47: 25th Feb

PUBLICATION DATES

7th Jan, 4th Feb, 4th March

SHAKTI'S FOURTH BIRTHDAY

SHAKTI, The Asian Lesbian and Gay Network, celebrates its fourth birthday this month. SHAKTI is a Sanskrit term that stands for strength and power.

Many Asians are British-born and raised within an Asian culture. For some Asian lesbians and gay men SHAKTI is a cultural infusion that allows them to be lesbians and gay men as Asians and all this implies. The group sees the importance of individuals, cultural values, attitudes and beliefs.

It is possible to be gay in an Asian society but very difficult to live an open gay lifestyle. In many cases it is unacceptable and would risk shaming the family. Gay Asians' sexuality sets them apart from their family and community even more than it would for some white lesbians and gay men. To live a gay lifestyle can mean sacrificing the whole community and having to leave that close group of family and friends.

It is sometimes difficult to talk to English people who do not understand Asian cultural values. SHAKTI is a group where some gay Asians feel they belong for not only does it offer support to one another but also the confidence to go out and talk to other isolated lesbians and gay men. One way SHAKTI is reaching out to its own communities is by doing some health promotion work, making members aware of some of the issues around HIV and other sexually transmitted diseases. The group backup has made it easier to put over the advice, information and services more effectively.

The local SHAKTI group is focused around organising a popular social event through successful outreach. The next SHAKTI social event is at the new venue - the Suite, Peacock Lane, Leicester, (Opposite the Holiday Inn) on Saturday 4th December. There is wheelchair access. (The photo shows a group of SHAKTI members from the East Midlands. Outright thanks Shakti for contributing this article).



OLD VIC (Downstairs) 22 Fletcher Gate, Nottingham

WOMENS NIGHT

OLD VIC, 22 FLETCHER GATE, NOTTINGHAM

**CHRISTMAS PARTY NIGHT
SATURDAY 11th DECEMBER**

£3.00 with flyer

8pm-1am **STRICTLY NO ADMISSION
AFTER 10.30PM**

Featuring on stage

**The Very good Rock
and Roll Band**

WOMEN ONLY CHRISTMAS DISCO

Mon 20th Dec 1993

9pm till late

Tickets £2.00 - £3.00

at 'CURZONS'

Curzon street Derby

Raffle

TOS DESIGN

Simon, Nigel, John & Staff welcome you to

MARSDEN'S BAR

13 Marsden Street, Chesterfield (0246) 232618

*and wish all our customers old and new a Merry
Xmas and a Happy New Year*

Look out for **SISTERS SLIM** - Sun 19th Dec
Sunday nights - **CABARET/DISCO IN THE
WAREHOUSE**

Wednesday nights - **CAPTAIN GINGER**

Outrageously camp DJ Free Admission

