

February 1994
Issue 46

outright! free!

for gays lesbians and bisexuals in central england

CONSPIRACY?

Suspensions are growing that a high level conspiracy is behind a wave of recent raids and attacks on the lesbian and gay community in a bid to discredit the campaign to change the gay male age of consent.

At the end of January, sixty-seven police swooped on the Warehouse Sauna in Darlaston and arrested twelve users. There have been similar raids in Manchester and other cities.

On the 1st February the Metropolitan Police's 'Operation Framework' went public with their dawn raids on homes throughout the country, described by the BBC both as 'searching for child pornographers' and 'the uncovering of a paedophile ring', both totally different things, but in the minds of large sections of the public, synonymous with gay men.

'Family Values'

Law reform campaigners are beginning to wonder whether the timing is mere coincidence, or whether they are part of a conspiracy. A conspiracy between Chief Constables, initiated by dissident Officers in the Met aiming to undermine moves being made to eliminate homophobia in the force. A conspiracy with right wing Tories demanding 'family values' and 'back to basics' morality. A conspiracy to thwart a piece of legislation which aims to advance personal freedom and turn that tide of repressive legislation which has succeeded in reversing so many of the gains of the 1960's and '70s.

Conspiracy or not, the decision to change the age of consent law will be made by MPs, and, at the time of going to press, there was still time to influence the way they vote.

How They'll Vote

OUTRIGHT wrote to all forty six MP's in our distribution area, urging them to support 16, and asking how they will vote. Supporting 16 were: Robert Ainsworth (Lab, Coventry NE), Harry Barnes (Lab, Derbys NE), Margaret Beckett (Lab, Derby S), Clive Betts (Lab, Sheffield Attercliffe), Jim Cunningham (Lab, Coventry SE), John Heppell (Lab, Nott'm E), Helen Jackson (Lab, Sheffield Hillsborough), Alan Simpson (Lab, Nott'm S), Paddy Tipping (Lab, Sherwood). Backing 18 were: Richard Alexander (Con, Newark), Richard Body (Con, Boston) and James Lester (Con, Broxtowe). Joe Ashton (Lab, Bassetlaw) and Alan Meale (Lab, Mansfield) sat on the fence and declined to commit themselves. Replies are still coming in.

**LEICESTERSHIRE AIDS
SUPPORT SERVICES**
"WHAT CAN YOU DO
ABOUT AIDS?"

Contact us now to find out!

**OUR NEXT VOLUNTEER TRAINING
PROGRAMME STARTS APRIL 1994**

Younger people; people available in the daytime; people who live in wider Leicestershire; and Black or Asian people in Leicestershire are particularly encouraged to apply.

Give Gordon Warren a ring on (0533) 559995 or write to LASS, 53 Regent Road, Leicester LE1 6YF NOW!

Leicestershire AIDS Support Services is a registered charity. No. 1023914.

CARE & SUPPORT



PROMOTING POSITIVE
SEXUAL HEALTH

BOOKSHOP RAID



Mushroom Bookshop, Nottingham, was attacked by a group of fascists on the afternoon of Saturday 15th January. They rampaged through the shop, damaging equipment and wrecking bookshelves, injuring a worker and a customer.

The group responsible are known as 'Blood and Honour', a fascist group closely allied to the British National Party. The incident happened within the space of four minutes. The police later arrested 30 people heading south out of the city.

An eye-witness to the attack told OUTRIGHT "I was standing outside a clothes shop with my daughter, when a member of staff shouted for someone to dial 999. We saw some people dressed like skinheads rushing out of the shop and throwing things back into the shop window."

Mushroom Bookshop has long been a supporter of the lesbian and gay community and this was reflected in the messages of support Mushroom has received from the lesbians and gays. Messages have come from as far afield as New Zealand and Canada.

A demonstration, "Nottingham United against Racism and Fascism" takes place on Saturday, 26th February and includes several local MP's, Trade Unionists, women's and lesbian/gay speakers (see Noticeboard page 4 for details).

PEER SUPPORT

Leicestershire now has the services of a Peer Support Development Worker with the appointment of Geoff Lilley.

Following the dissolution of Leicester Body Positive in 1992 there's been a gap in the co-ordination of HIV peer-support activities.

Geoff, a Geordie, was for many years a health promotion advisor working mainly in sexual health and drug use. His voluntary contributions have included working for Manchester Gay Switchboard, Manchester AIDSline and founding and working for Body Positive North-West.

His role as HIV Peer-Support Development Worker is to liaise with people living with HIV Disease and Service Providers. He also acts as an advocate and broker for the needs and wants of people living with HIV. He hopes to retain an unbiased approach. Throughout his time working and living with the HIV disease he has experienced the isolating effect of having an HIV or AIDS diagnosis, and seen the value of self-help. He's also aware that everyone with the virus has something to offer others in the way of shared experiences.

Geoff welcomes calls from people in Leicestershire who are HIV positive. He can be contacted on 0533-559995 or by letter at 53 Regent Rd, Leicester LE1 6YF.

STEREOTYPES

The Workers' Educational Association are sponsoring a one-day course on 'Sexual Stereotypes and Scapegoats: HIV & AIDS, Syphilis and Sexuality', and a course running over ten consecutive Thursdays on 'Constructing Homosexuality: Beyond the Nature vs Nurture Dead End'. The one-day course is on 26th February, 10.00am to 5pm and the ten-Thursdays' course began on 20th January, 7.30pm-9pm each week. Further details from Kevin Crowe, WEA, 101 Hinckley Road, Leicester (0533) 556614.

STAFFORDSHIRE BI'S

Staffordshire Bisexual Group is being relaunched in February. Founded in the summer of '92, the group welcomes bisexuals and bi-friendly people of other sexualities too. "We have decided to stop meeting in pubs" said Helen "and to meet instead in members' homes. This will distribute meetings more widely instead of being limited to Stoke on Trent and will also make it easier for parents to attend the group: they are welcome to bring their children with them."

Meetings are held on the first Tuesday of every month and discussions will include Coming Out, Monogamy and Non-monogamy, and Parenting. There will also be club outings and trips to Pride, and to the annual Bisexual Conference.

For more information about the group phone South Staffs Friends or North Staffs Lesbian & Gay Switchboard (see Helplines page 8) or write to Staffs Bisexual Group at Box 15, 2b Hope Street, Hanley, Stoke on Trent.

FREEBIES!

Congratulations to Andrew of Sheffield 2 and Jeremy of Sheffield 11 for winning copies of the GMP 'Northern Scene' guide in last month's competition.

We still have one copy of the 'Northern Scene' guide left: write to us with the full name of the publishers by 20th Feb and first correct entry wins the guide. Mark your envelope 'Northern Scene'.

We also have an XL size black tee shirt with multicolour scene from 'Desperate Remedies' to give away. The winner is the first request opened on 20th Feb. Mark your envelope 'Competition'.

And - we still have the hardback novel 'Six of One' by Rita Mae Brown to give away to the first person to name one of her other lesbian novels. Mark your entry 'Rita Mae Brown'.

All entries to Outright, PO Box 4, West PDO, Nottingham NG7 2DJ.

BE OUR VALENTINE

A Valentine Ball at Curzons in Derby on Monday 14th February aims to raise funds to support people affected or infected by HIV/AIDS.

The event is organised by Derby and District HIV/AIDS Support Services. A spokesperson said "Over the past six years this fund has helped several of our members, improving their quality of life. Without the support of the general public at these events, grants of this kind would not be possible."

Admission is £2.50 and the night begins at 8pm and includes disco, karaoke, tombola, bingo and surprises!

More info from Lil on 0332-751587 or Peter on 0332-348670.

HYSON GREEN LAW CENTRE



119 RADFORD ROAD

(opp. Asda) Telephone: 787813

OPENING TIMES

Monday, Tuesday, Thursday & Friday 9.45 - 12.45am and Thursday evening 6.30 - 8pm

WE PROVIDE FREE LEGAL ADVICE AND

REPRESENTATION ON...

SOCIAL SECURITY, EMPLOYMENT, HOUSING & IMMIGRATION/ NATIONALITY LAW

HYSON GREEN LAW CENTRE

Improving Access to Justice

mushroom

B.O.O.K.S.H.O.P

Thanks to all for your support following the Nazi attack. Were back running as 'normal'.

Join the lesbian/gay contingent on the February 26th demonstration against racism and fascism.

10-12 Heathcote Street, Nottingham, NG1 3AA
0602 - 582506

WORRIED, CONCERNED OR AFFECTED BY HIV OR AIDS?

We're here to help!

INFORMATION SUPPORT DROP-IN BEFRIENDING

Contact us in confidence:
(0602) 411989

8 Eldon Chambers,
Wheeler Gate,
Nottingham NG1 2NS.
Nottingham AIDS Information Project

Charity Regn. No. 702070

A FREE SERVICE FOR GAY MEN IN NOTTINGHAM

Information and confidential counselling on a range of issues around HIV testing, safer sex and sexual well-being in general.

*free condoms

*free KY

*Hepatitis B vaccination

*meeting place for groups

*videos

*no appointment necessary

All in comfortable surroundings at
NOTTINGHAM HEALTH SHOP

Broad Street, Hockley, Nottingham
Drop in Mon-Fri 9am-5pm or ring
(0602) 475414



Young lesbians and gay men after an abseil down Trent Bridge at the recent Gay Youth Coalition conference in Nottingham

LESBIAN APPEAL

Trustees of a bequest from a close lesbian friend who died in 1992 are appealing for information on the support available in the community for aging lesbians. The Trust aims to provide help in this field and wants to know what resources already exist in the way of accommodation, research, bereavement counselling and advice services. Women working in any of these areas or are concerned with the care and support of older lesbians are asked to contact Andrea at PO Box 12, South PDO, Nottingham NG2 1LH.

LEMONAID SPARKLES

LemonAid raised £3,600, reports Nottingham AIDS Information Project. The week's events for World AIDS Day culminated in a benefit at the city's Old Vic Tavern for which all 400 tickets were already sold out before the night. NAIP has thanked everyone who contributed to LemonAid in one way or another, and has put the money into the Captain's Fund, which assists people with HIV/AIDS. Plans are already underway for an even fizzier event in '94.

LIFE IS *NOT* THE SAME IF YOU'RE GAY

The laws surrounding pensions make it difficult for unmarried couples to plan for retirement. When you are gay, it is not only the law that makes it difficult. It is the misconceptions surrounding intestacy and trusts. In other words, if you think you may ever want a partner to benefit from your pension plan in the event of your death you cannot leave it to chance.

Your independent financial adviser should not only inform you of the costs involved of any particular pension policy, but the size, strength and past performance of the pension office. Financial advice, however, does not stop there.

To us, getting it right seems surprisingly simple. We do not charge and our service is confidential.

GAY MONEY
STRAIGHT ADVICE
ivan massow associates
195 Wardour Street, London W1
Tel: 071-494-1848 Fax: 071-494-1849

LINCOLNSHIRE AIDS VOLUNTARY GROUP

Tel (0522) 513999

Mon, Wed, Fri 9am to 9pm
Tues, Thur 9am to 5.30pm
24 hour answerphone

For information, advice,
support, buddying,
safer sex etc

All calls confidential

Please call the above number
or visit us in Lincoln at
THE HEALTH SHOP,
PORTLAND HOUSE,
3, PORTLAND STREET,
LINCOLN.

LESBIANS UNCLOTHED

The Beeb begins a new series of *Without Walls* on 2 on Tuesdays from 15th February. The series includes an examination by American academic Camille Paglia of sexual symbols by tracing the history of lesbian status and identity.

Camille Paglia takes a dim view of lesbians, believing them driven by a nesting instinct, sexually unadventurous, devoid of humour and intellectually inert. Yet lesbianism is now making its way into the fashionable mainstream of drama, sport, and Country and Western. Paglia explains her own seemingly contradictory views and traces the cultural history of lesbianism from Sappho to the present day.

Check Radio Times for date and programme title.

DERBYSHIRE BODY POSITIVE

for friends, carers, partners
who are HIV+

Please contact PO Box 124,
DERBY DE1 9NZ, or phone us

Tuesdays:

10.30am - 1.30pm

Thursdays:

11.30am - 4pm

0332 - 292129

USE YOUR BUYING POWER



hiziki

Buying from countries and companies with a commitment to social justice - Hiziki has the widest range of wholefoods, fresh bread, take-away snacks, organic fruit & veg, vegetarian convenience foods, and organic wine & beer in Nottingham. We also stock many natural remedies, cruelty-free toiletries & environment friendly cleaning products.

5% discount for UB40s,
OAPs & students on
Wed/Thurs.

Hiziki is a workers' co-operative

15 GOOSEGATE, HOCKLEY
NOTTINGHAM

FOR POSITIVE CHANGE

NOTICE BOARD

● Education Workers

The inaugural meeting of Lesbians and Gays in Education East Midlands Region takes place on Sat 5th Feb at 2pm at the ICC, 61b, Mansfield Road, Nottingham. All lesbians, gays and bisexuals working in any phase of education are welcome. More info 0602-585814.

● Walking Group

"Pink Pathfinders", a new walking group based in Beeston, Notts. All walks in the Peak District. All welcome. Next walk, Calver 6th Feb. Next group meeting Sunday 6th March. Call Bob 0602-678134.

● Spinsta Sounds

Travel Through Time with Spinsta Sounds, butch/femme Valentine's Extravaganza, Sat 12th Feb, Nott'm Women's Centre, 9pm 'til late, competitions, with a signer in attendance - dress up and get in cheaper.

● Northants Events

Northants Lesbian Line present a Women Only Disco at Northampton on Sat 12th Feb, 8pm-midnight. Admission £2/1.50.

A visit to 'The Rocky Horror Show' at the Derngate on Thurs 24th March. Deposits are £5 by 1st Feb.

More details on both events phone Lesbian Line (see page 8.)

● Gay Outdoor Club

The East Midlands GOC twelfth season of walks: Sun 20th Feb from Ticknall, approx 8 miles in South Derbys/Leics; 20th March from Brinklow, approx 7 miles. Also cycle ride on Sun 6th March, approx 30 miles in South Leics and Welland Valley. More info from Nick on 0533-811138.

● Against Racism & Fascism

A major demonstration against racism and fascism, including a speaker from Outrage! takes place in Nott'm on Sat 26th Feb. March from the Forest Rec Ground at

10.30pm to the Market Square for mid-day rally. Bring banners.

● Pink Ink

Lesbian and Gay Writing Group now meets, 7.45pm, every last Wednesday, 8 Eldon Chambers, off Wheelergate, Nottm. Or write to Pink Ink c/o Mushroom Bookshop, 10-12 Heathcote St, Nott'm, NG1 3AA.

● Actors wanted

Gay-based video production still looking for actors for a production called "Fragments". Shooting starts in May, with screening in September. Further info: Gordon (0602) 858869.

● Climbing

Interested in climbing? Gay Outdoor Club meeting every first and third Tuesday evenings at The Foundry, Sheffield. Contact Philip (0943) 880241.

● Herstory

Notts Womens History Group meets monthly with speakers and discussion. All meetings at 7.30pm, including tea and biscuits for £1. More info from Sheila Postles on 0602-483504 ext 3602 (daytime) or 0509-852947 (eves).

● GLYP

Nottingham GLYP have a new address and phone number: c/o 8 Eldon Chambers, NG1 2NS (0602) 502028. The group welcomes anyone under the age of 26 who is, or feels they might be, lesbian, gay or bisexual.

● Leather, Rubber, PVC.

An event at Curzons, Derby with strict leather, rubber, PVC, etc dress code on Monday 28th February. £6/4. More info from PO Box 2292, Acocks Green, B'ham, B27 7UD.

● Vtol Dance

Vtol Dance Company perform at Trinity Arts Centre, Gainsborough on Mon 7th Feb and at Guildhall Arts Centre, Grantham on Fri 11th Feb.

'GOOD TEACHERS'

A one day inservice course for educators on 'what it means to be gay, lesbian or bisexual in school' is being repeated by the School of Education at Nottingham University on Saturday 12th March. The course looks at ways in which educators of all sexual orientations can devise strategies to operate more comfortably and securely in dealing with the issue. The course was first put on in 1993. For more details contact Max Biddulph on 0602-514457.

NEW WOMEN'S NIGHT

The Pineapple Inn in Leicester are hosting a monthly Women's Night on the third Saturday of each month from 8pm to 11pm. The first night starts on Saturday, 19th February in the upstairs bar of the pub, following many requests from the Women's community. There will be all women bar staff presided over by sexy Lynne.

IS YOUR BRIGHT IDEA STUCK ON THE DRAWING BOARD?

The Nottingham City Council Centre for Product Development provides practical support to help companies and enterprising individuals turn technical ideas into commercial successes.

We support the application of electronic & mechanical technology with:

- Impartial Advice
- A Prototyping Service
- Workshop facilities

Call us to discuss your ideas and how we can help on

0602 782200

YOU HAVE THE IDEAS ... WE HAVE THE TECHNOLOGY

THE MEN'S SEXUAL HEALTH PROJECT

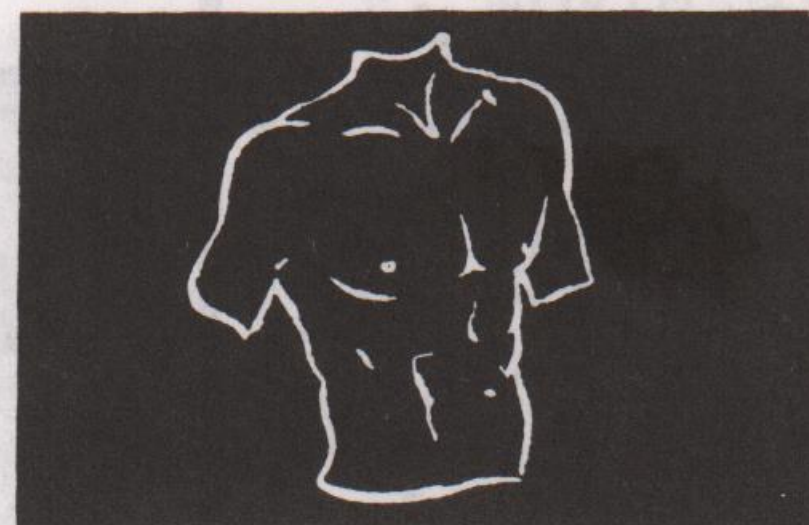
45, King Street, Leicester

ALL OUR SERVICES ARE FREE AND CONFIDENTIAL YOU DON'T EVEN HAVE TO GIVE YOUR NAME

Available free to all men who have sex with men regardless of age, sexuality, race, religion, disability, or antibody status.

TRADE SAFELY

Do you like sex? We do. Do you use the Gay scene? Do you cottage or cruise? Did you know that a gay man tests HIV + every hour of the working week? Did you know we can now do something about this?



TRADE is a group of men who have sex with men who want to do something about the growing HIV epidemic.

FOR THE DATE OF OUR NEXT MEETING AT 45, KING STREET, LEICESTER, PHONE ANDY.

If you'd like to get involved, why not come along.

For more information phone Andy: 0533 541747 (office hours)

FREE CONDOM DROP IN

Opening times

Every Thursday 11.30am-2.30pm

Every Friday 11.30am-2.30pm

Second Saturday each month 12.00am-3.00pm

(No appointment necessary)

If you have difficulties visiting during these times ring 0533-541747 for an appointment free.... (and easy)

ABSOLUTELY FREE!

*A choice of gay safe condoms *Water based lubricants *Dental dams, latex gloves *Information, counselling and support on HIV/AIDS, sexuality, relationships, HIV testing, safer sex or any concerns about sexual health *Leaflets, safer sex videos, posters etc.

METRO CINEMA

Green Lane Derby: box office (0332) 340170

FEBRUARY PROGRAMME

Sat 5	The Piano (15) 6.30	Fri 18	True Romance (18) 6.30
Sat 5	L'Accompagnatrice * (PG) 8.30	Fri 18	Friends (15) 8.45
Sat 5	Reservoir Dogs (18) 11.15	Fri 18	Dragon-The Bruce Lee Story (15) 11.00
Sun 6	L'Accompagnatrice * (PG) 6.00	Sat 19	True Romance (18) 6.30
Sun 6	The Piano (15) 8.30	Sat 19	Friends (15) 8.45
Tues 8	The Piano (15) 6.30/8.45	Sat 19	Dragon-The Bruce Lee Story (15) 11.00
Wed 9	The Piano (15) 6.30/8.45	Sun 20	True Romance (18) 6.00
Thur 10	The Piano (15) 6.30/8.45	Sun 20	Friends (15) 8.15
Fri 11	The Secret Garden (PG) 6.15	Tues 22	Friends (15) 6.30
Fri 11	Hard Boiled * (18) 8.30	Tues 22	True Romance (18) 8.30
Fri 11	Stepping Razor (18) 11.15	Wed 23	Violent Cop * (18) 6.30
Sat 12	The Secret Garden (PG) 6.15	Wed 23	Violent Cop * (18) 8.45
Sat 12	Hard Boiled * (18) 8.30	Thur 24	Violent Cop * (18) 6.30
Sat 12	Stepping Razor (18) 11.15	Thur 24	Violent Cop * (18) 8.45
Sun 13	The Secret Garden (PG) 6.00	Fri 25	Rising Sun (18) 6.15
Sun 13	Hard Boiled * (18) 8.30	Fri 25	Ruby in Paradise (18) 8.45
Tues 15	The Secret Garden (PG) 6.15	Fri 25	Eraserhead (18) 11.15
Tues 15	Hard Boiled * (18) 8.30	Sat 26	Rising Sun (18) 6.15
Wed 16	Les Enfants du Paradis * (PG) 7.15	Sat 26	Ruby in Paradise (15) 8.45
Thur 17	Les Enfants du Paradis * (PG) 7.15	Sat 26	Eraserhead (18) 11.15
		Sun 27	Rising Sun (18) 5.45
		Sun 27	Ruby in Paradise (15) 8.15

Tickets £3.75-£2.95 concs/members, £2.25 conc. members.
Tel: 0332-340170. Seats bookable.
* film with English sub-titles.

GIMME SHELTER!

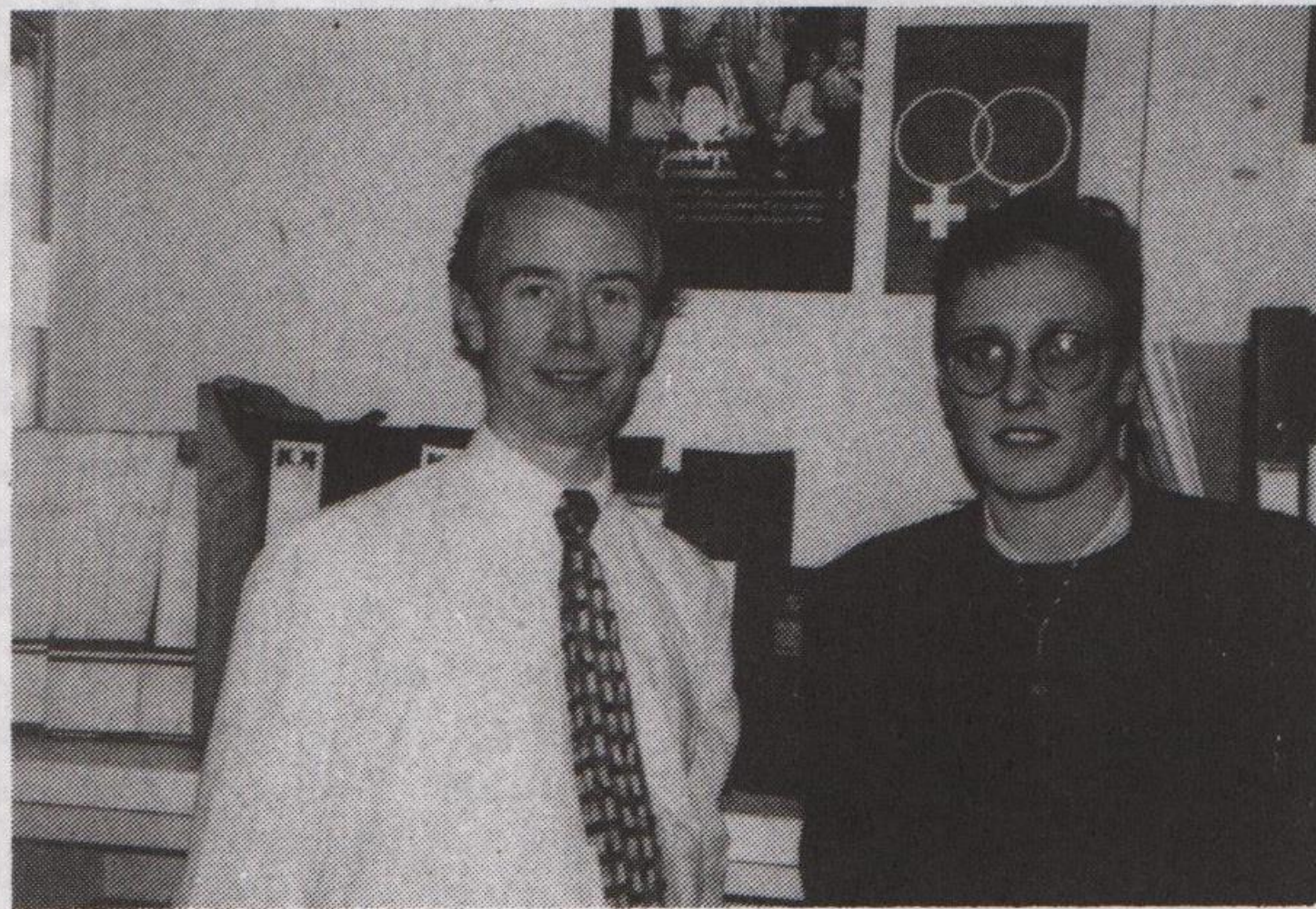
A song by Ralph McTell made the pop charts one mid-winter back in the late 70's, called 'The Streets of London', which briefly raised the issue of homelessness around Xmas time in the Capital.

But these days you need travel no further than your own main street to witness the grim reality for some people. OUT-RIGHT visited Shelter in Nottingham recently and spoke to Tim Lunn and Tracy Smith, Joint co-ordinators, (pictured), about the importance of homelessness as an issue facing more and more lesbians, gay men and bisexual people living in Central England.

In 1992/3 Shelter/Notts Homeless Action dealt with 7,331 homelessness and housing problems from their housing aid centres in Nottingham and Mansfield and through their outreach advice sessions.

Currently, potentially homeless families, who often include undeclared lesbian parents, and single people have some legal rights, qualifying under present homelessness legislation for rehousing by the local council. Nottingham City Council has proved willing to look at applications from young single people, in extreme circumstances, where someone might for example be black and gay, and accepted their housing need as a priority.

"Housing is a critical issue for everyone but for lesbians, gay men and bisexual people there are particular needs and issues which are often ignored. Home has traditionally been seen as somewhere that should be safe and secure; somewhere that helps give meaning and purpose to life generally,



where chosen roots can be established. Even if you are unwaged it is possible to have some quality of life if your living situation is reasonably secure".

But if new proposals become law under this Conservative government, all this will change. Homeless families and single people will have to literally demonstrate that they are homeless by sleeping on the steps of town halls up and down the land, before any action can even be considered by local councils. Even before the ink is dry, entitlement to permanent housing as of right, would be removed.

Both Tim and Tracy see this piece of new legislation as a major reversal of social policy, and although presented as an issue about 'homeless families', has serious implications for the lesbian, gay and bisexual communities.

"We are very keen that lesbians and gay men in Notts. should feel comfortable and free to use the services we provide. That last row with an ultimatum to leave or a fear of remaining at home, is an experience that most lesbians and gay men would have had when first leaving the parental home under a cloud. So when someone comes in and says to Tracy and Tim, 'You don't know what it's like...', they may just have some idea as they are both 'out' as a lesbian and a gay man in their workplace.

You can contact SHELTER/NOTTS HOMELESS ACTION on (0602) 480479 at Nottingham Housing Aid Centre, 38 Heathcote St, Nottingham and in Mansfield at Mansfield Housing Aid.

MEN DANCING TOGETHER

'MEN DANCING TOGETHER' is a gay and bisexual men's circle dance held in Central Nottingham. The next event takes place on Sunday 20th February, 2pm-5pm, bring food to share, 50p. towards room hire, ring Paul (0602) 588246 or Bob (0533) 737794 for more info..

LIVE AND LUBRICATED

A huge, free, safer-sex, first birthday party, hosted by MESMEN Coventry takes place at Bobby's The Club, The Burgess, Coventry on Monday 28th February, running from 9.30pm to 2.30am. All tickets, free from local gay pubs, lesbian line or from the MESMEN or HIV Network. The main attraction is top London cabaret duo, Katrina and The Boy. 18,000 sachets were distributed in the free condom and lube campaign, run in conjunction with Coventry and Warwickshire gay pubs.

THAT'S LIFE

But not for Esther. Strictly for serious music fans of a radical (but not chic) persuasion. Gay friendly too. Learn lots about Hoodlum Empire, The Featherheads and Easy Big Fella in Oz among others. A fanzine by the fans. Fifty six pages for £1.39 inc p&p from PO Box 276, Derby.

B BLACKTHORN
BOOKS CO-OPERATIVE

Leicester's Radical Bookshop

**Armistead
Maupin's
'MAYBE THE
MOON'**
now in paperback
plus

New Penguin gay
short stories selection
70, High Street, Leicester
(0533) 621896

**ANVIL
PRESS
PRINT &
DESIGN**

**A WORKERS
CO-OPERATIVE**

Tel: 0332 298213

FRENCH FARMHOUSE TO LET

*Rural France - Pays de la Loire
for groups and clubs
(ideal for fundraising)*

*Prices from £50 per person per week.
Also, special weekends in May
for individuals.*

*Enjoy microlight flying, windsurfing,
wine tasting, horse riding,
swimming and lots more.
We can arrange ferry crossings,
insurance etc.*

"VACANCES ACTIVES"

*Chapel Cottage, Norwell, Newark,
Notts, NG23 6JN*

*or phone Phil 0636-86459 or
Collin/Pat 0602-391295*

SAMPLES by Simon Smalley

Ghettoblaster

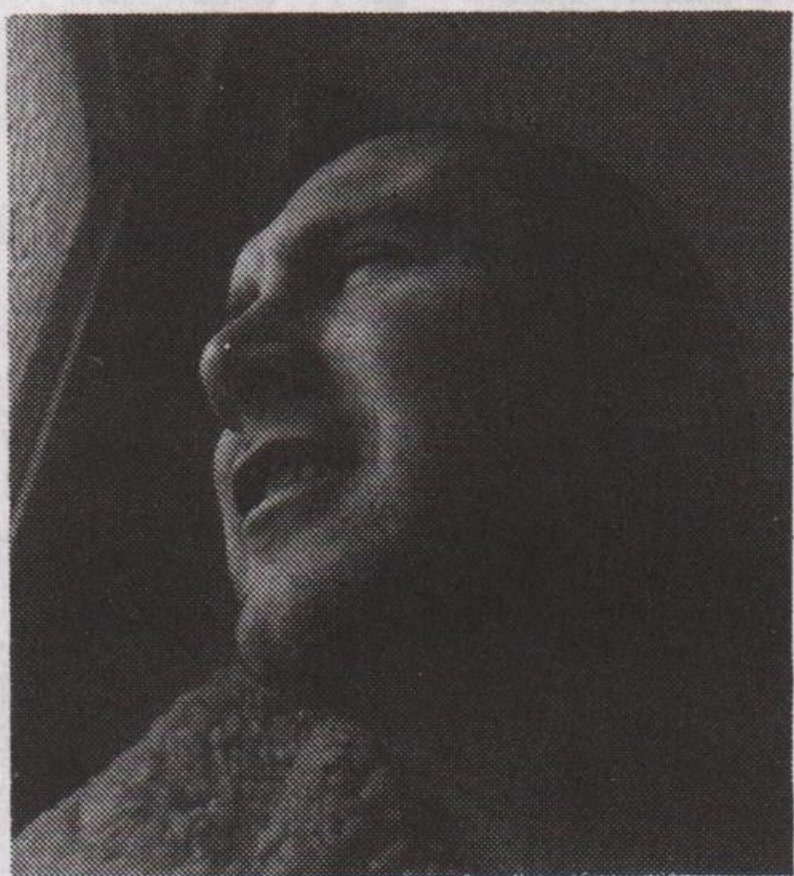
Admittedly, released a while now but still worth bringing to attention is 'Guerilla In Dub' - a nine track mash-up of previous releases on Guerilla Records, one of the prime movers of the dance scene. It's an exhilarating exploration of the fusion of '90s techno know-how and the advancement of dance music with '70s and '80s dub vendors such as Scientist, King Tubby & Princes Far-I & Jammy. This selection sur-

passes mere cop-out remixes, cutting up and cutting out excesses until each one undergoes a transfusion and transformation where the bass kicks in through the chest, grabs you by the spine and shakes you till your tabs rattle just as the treble jabs in like hot needles being inserted into your scalp to totally finish you off. Not everyone's cuppa, but truly Dub House Disco.

Sisters of Mercy

Visualise it... through the mist which swathes gothic ruins with semi-opaque sheen, a group of enchanting monks materialise from the translucent gloom... Yep, Enigma The Sequel has arrived!

Following the universal success of 'Mia Culpa' et al, the Gregorian Groovers repeat the prescription on 'Cross of Changes', yet more ethereal breathy vocals (courtesy small-time Eurobeat queen



Sandra) laid over the same plinky plunky chugging backbeat. The brains (or lack of 'em) behind Enigma obviously thinks the world is ready for another dose of anaesthetic Enya-esque excursions (Oooh, Vicar!) but no, no, no! Once bitten, twice shy. It hardly inspires you to don an old grey blanket, firmly grasp an eight inch altar candle and troll

moaning round a churchyard at midnight (though on a hot August night I can be tempted). Well, it's alright, I s'pose, but I'd hate to be trapped in a lift with it playing!

Torch & Twang

Traditionally, Country & Western has had a straaaange existence, half being big, sweaty diesel-on-the-rocks drinkin' he men (calm down, gal) whilst t'other is a kinda mumsy-but-glitzzy Cinderella figure. Amply fitting into the latter category & strutting into town comes good ol' Dolly Parton and her down home ladies Loretta Lynn & Tammy Wy-nette, dishing up a slice of home-made pie called 'Honky Tonk Angels'. A companion album to 1987's 'Trio', this is a rootin' tootin' spur-janglin' chap-covered thigh slappin' rhinestone encrusted harmonious treat. Although not as deliciously light as the Parton/Ronstadt/Harris threesome, it appears played more for laughs, almost parodying the kitsch S&M, sorry, C&W genre which spawned this. The choice of material could've been better, but the sheer tackiness of grafting 'Special Guest Star' Patsy Cline onto 'Lovesick Blues' and the outrageous roll-call of dead C&W stars on 'Last Night I Dreamed of a Hillbilly Heaven' makes up for the rest.

BRAMBLES HOUSING CO-OPERATIVE

seeks new members.

Includes anti-sexist collective, home education, wildlife garden. Money or previous experience of co-ops not necessary, just energy and enthusiasm. Short term accommodation also offered.

Contact 82 Andover Street, Burngreave, Sheffield, S3 9EH.

EMPLOYMENT SOUGHT

Male, 33, currently employed as Factory Department Manager with 15 years service, unfortunately working redundancy notice until 16th march, looking for work in similar field, Production Supervisor, Manager etc, etc. Excellent references available. Other employment considered. Genuine offers of employment only please. Reply to Box 120

NOTTINGHAM

Stock your freezer from Buttercup's Bakery

Ring: 0602 - 616 813 for the best in home cooking. Outside catering also available

SLEAFORD, Lincs VICTORIA INN GAY BAR

Every Sunday, all ages welcome,
8.30pm until late.
Accommodation & food available
Contact John 0529 - 414054
Free entry - bar prices

MEN WANTED!

Whether you are Mr Average looking for Mr Right or prefer to meet new friends every night. Whether you are chubby, a bear or into leather, rubber, PVC or uniforms, we have the guy for you.

We are the UK's most versatile introduction agency for gay and bisexual men.

Low cost membership.

Mail forwarding service.

Confidentiality assured.

081-643-1918

Profile Enterprises UK Ltd, PO Box 430, Sutton, Surrey, SM2 5UP.

EDWARD CARPENTER COMMUNITY

GAY MEN'S WEEK at WASDALE in CUMBRIA

Saturday 9th April-Saturday-16th April (7 nights)

An Indoor and Outdoor activity Week with a difference.

Walking, dancing, massage, climbing, aerobics, singing workshops and much more. An experience not to be missed. You can opt in where you want, and opt out too! Being Ourselves - a Gay Men's Week is an opportunity for a group of gay men to spend time together in beautiful surroundings in carefully chosen 'gay friendly' places where we can be ourselves on our own terms and have exclusive use of the premises. Thirty people in a fifty-six bed luxury hostel gives us room to spread out. Full board, all inclusive sliding scale from £95 upwards.

If you want to know more, contact ECC 'Wasdale Week', 37 Ritherdon Road, London SW17 8QE or phone (0602) 780124 for more information. A number of places still available.

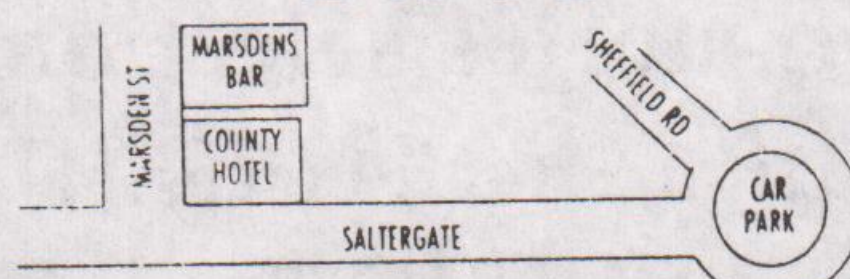
Simon, Nigel, John and Staff welcome you to
MARSDEN'S BAR
13 Marsden Street, Chesterfield
(0246) 232618

**CAPTAIN GINGER
EVERY SUNDAY
NIGHT**

Outrageously camp DJ
FREE ADMISSION

**WEDNESDAY NIGHT
- PROMOTIONS
NIGHT**

**THURSDAY NIGHT -
DISCO**



HOUNDED FROM HOME

Tim Blades was just 17 when his world fell apart, following a prosecution under the Sexual Offences Act, after consenting sex with an 18 year old man. Now 21, Tim talks to OUTRIGHT about the upheaval it caused in his life, living in a small town and coming from a strict Christian family.

"I knew I was gay when I was 14; at around 15 I remember a discussion about Aids in the chemistry lab at school. The teacher made it plain that people should be locked up for being gay. This teacher was talking about me!

"My first sexual experience was at 17, when I had sex with an 18 year old man, but unknown to me, between our first and second meeting his parents had found out and the police were waiting and arrested me on a gross indecency charge.

"I was doing 'A' levels at time and had aspirations to be a Chartered Surveyor. I wanted to fight the prosecution but was advised against doing so by the Solicitor who turned out to be homophobic. He soon made it clear he was not really interested in my case at all.

"When I refused to see a psychiatrist the court went for a Conditional Discharge, pleasing my parents who thought I had got off lightly, but leaving me with a criminal record. Somehow the other lad, who was a year older than me, managed to persuade the Court that he had been 'coerced' into having sex against his will.

"My sole support throughout this awful time were a couple of local gay activists in my home town and people from a disco run by Lincoln Gay Switchboard.

"Home became unliveable for me as my parents believed being gay was sinful. I found a caravan to live in for a time. Short of money, I answered a personal ad in the Pink Paper. This man offered accommodation with strings and I ended up



living with him for several months and through an escort agency I became involved in renting for several months, before deciding to move back to the Midlands.

"Back in Nottingham eventually, following a period sleeping rough, I ended up in one of the Macedon Trust houses. The staff were very good and helped me to get on my feet again. I stayed there for three months until I was hassled by an anti-gay resident, so I left. Eventually, I ended up in Nottingham where I met my present partner. During the last two years I have gradually built up new friendships and begun to regain my confidence but it was a blot on my teenage years.

"Britain's Age of Consent laws are the most backward in Europe. Its absurd that a 16 year old can put his life on the line in the armed forces, be responsible for his debts, can work and live independently, and be free to have a sexual relationship with someone of the opposite sex, but not with someone of the same sex. Change is long overdue."

TRIANGLES

North Sherwood Street, Nottingham



FRIDAYS
7 - 10pm

£1
PINT

SATURDAYS
7 - 10pm

EVERY WEEKEND IN FEBRUARY

FABULOUS

FEBRUARY



MEMBERSHIP ENTITLES FREE OR REDUCED
ENTRY FRIDAY & SATURDAY NIGHT

WHAT'S ON?

VALENTINE'S EXTRAVAGANZA!!

Friday 11th Romantic Candlelight Dinner & Dance 7-2am

Tickets and tables to be booked in advance £2 per head.

Sat 12th 60s and 70s DISCO

Sun 13th Lunchtime Brunch - coffee, croissants, papers

Mon 14th VALENTINE'S DISCO and our
unique "MR AND MRS QUIZ"!!

TRIANGLES OPEN TO ALL WEEKDAYS 6-11pm SUNDAYS 12-3PM AND 7-10.30pm
DOORS CLOSED 10pm FRIDAY & SATURDAY

STONEWALL BREAKS - GAY MEN TOGETHER

*Spend a residential weekend
with a difference, in Derbyshire
Peak District with twenty-
seven other gay men.*

*We don't often have the opportunity to
spend time together with other gay
men of all ages and be ourselves in
pleasant gay-safe surroundings. For
many people, making new friends can
be difficult and whilst gay 'package'
holidays may offer a bit of escapism
they are less likely to provide
continuing, supportive friendships.*

*We never thought that our
weekend break would be so
popular. We had to put on a
second to cope with the
overflow, and that soon filled.*

*The Weekend breaks are
11th-13th February and
4th-6th March, sliding scale
from £33 to £55. However,
there are often last-minute
cancellations so it is worth
phoning to see the state of
play (0602) 780124. If
you prefer, write to:*

*PO Box 4, West PDO,
Nottingham, NG7 2DJ.*

classified...classified...classified...classified...

HOW TO REPLY. Seal each reply in a separate envelope. Write the number of the Box you are replying to in the top right hand corner of each envelope. Place them in a larger envelope. **Enclose two loose first class stamps for each reply.** Address the outer envelope to **Outright**, stamp and post to PO Box 4, West PDO, Nottingham NG7 2DJ.

MENS PERSONAL

MIDLANDS. Fun loving 33, dark hair, 5'10", enjoys pubs, clubs and quiet nights in. Why not spend one with me. Seeking similar for poss 1-1, 21-30. ALAWP. Box 51.

SHEFFIELD/ANYWHERE. White gay male, slim, 48, masculine, friendly personality, caring, own place. Into fitness, travel. I'm younger looking and seek young foreign guys, any race/creed for visits. ALA. Box 52.

NORTH STAFFS, 25, 5'10", slim, fair, gsoh, good looking. Into music, food, pubs, nights in/out. Seeks similar, slim guy, under 26, for lasting friendship and genuine 1-1. ALAWP-honest. Box 53.

LEICESTERAREA, 50 year old male seeking holiday company to Amsterdam or elsewhere in April. Share expenses and experience. Any age. Box 54.

NOTT'M/DERBY GUY, 40, average looks, straight acting, seeks sincere guys 25-35 for friendship, fun, poss 1-1. Interests briefs, jocks, walking, theatre, photog. Photo assures reply. Box 55.

EAST MIDLANDS. English white male seeks guy where age is not important. I offer friendship, hospitality if required. Photo apprec in exchange for mine. ALAWP. Box 56.

NOTT'M: if you're an active professional hoping to meet a similar quality person who is 44, tall, dark, honest & trustworthy, then write (or we'll never make contact!) Box 57.

SHEFFIELD. Unique gay guy, 30, irritating sense of humour, non-smoker, seeks similar for long-term 1-1 argument. Enjoys music, country walks and good company. Box 58.

BISEXUAL MALE SLAVE aged 40, pierced, tattooed, currently serving a lesbian mistress. I have been ordered to serve a genuine gay master, fully equipped dungeon at your disposal. Frank letter. Box 59.

NORTHANTS, 48, slim, non-smoker, vegetarian, interests theatre, music, travel, art, needs a nice caring guy for 1-1. ALA Please write. Box 60.

GAY MALE lives in Lincs. Age 27, 5'11", looking for guys 28-35 for fun and friendship or 1-1. Interests are travel, winter sports or fun in the sun. Box 61.

LEICS, male, mid 40s, seeks friends up to 35, any race/colour, non-smoker, own place. Into travel, videos, walking, music. Photo if poss. ALA. Box 62.

MANSFIELD AREA, males under mid-thirties wanted for friendship (poss relationship if photo incl). Will set up gay group meetings (monthly) if enough write. Box 63.

GAY MALE, 28, Chest'fd/Derby/Mans'fd area, good looks, seeks loving, caring person for 1-1 with a stable and committed outlook. Inexperienced but extremely loving. Loves the finer things in life. Box 64.

SUB, lousy sense of humour, into rubber, boots and lots more, wants rough, demanding tops. Photo please. Box 65.

SHEFFIELD/CHEST'FD. Romantic professional, 45, 5'5", non-smoker, non-scene, arts world, travel interests, seeks similar 40-55 (not too tall) for sincere friendship poss leading to happy relat. Frank letters welcome. Box 66.

STOKE/STAFFS. Friendly couple 40/50 in long-term relat with few friends seeks similar couple for friendship. Mainly non-scene. Interests Victo-

riana, theatre, collecting old postcards, and evenings at home. Box 67.

NOTT'M GUY, smooth, medium build, 5'8", naturist, photog, massage, seeks guys Nott'm area, early 20s-30s, 5'2"-6'4", smooth/hairy, any race/colour welcome. Photo/phone No. ALAWP. Box 68.

LEICS/EAST MIDS, 36 yr old, 5'7", medium build, good looking, vgsch, seeks guys 22-34 for good times, poss 1-1. Smooth boyish looks, well built. Write now guys. Your photo gets mine. ALA. Box 69.

MALE, 24, business student, own house, car, into swimming, gym, limbering exercises, non-scene, straight acting, gsoh, enjoys cinema, pubs, meeting people. Seeks fit, equally independent older male poss 1-1. Box 70.

YOUNG ATTRACTIVE GUY, slim build, very loving and caring, seeks 1-1 Notts area. Also accomm available. M/F rent negot. Photo/phone apprec. Box 71.

LEICS. Caring couple, mid 30s. gsoh, seeks young slim singles 21-30 as pampered weekend house guests for fun/friendship. Into sci fi, art, gay & horror films, mags. Outings countryside. ALAWP. Box 72.

SHEFFIELD/ANYWHERE, boyish. slim, 30, dark hair and eyes, tache, smooth, 5'8" tall, non-scene, seeks lasting, loving, caring, monogamous relat, any age. Photo apprec. replies assured. Box 73.

NOTTS, 24, into clothes, clubs and music, seeks mates for horny fun/friendship-lets see what's cooking. Photo please. Box 74.

STUDENT FRIENDS + sports jocks into fun/feeling/film and fruitiness. 30 something Nott'm professional needs stimulating. Rescue me from the precipice of terminal boredom. New horizons with genuine mate. Box 75.

NOTT'M, 26, slim, attractive, seeks loyal caring person for 1-1. Acc scene, own home and car. Box 82.

LEICS, 32, not bad looking, non-camp, caring, sincere and loving, seeks similar 25-35 for friendship & poss 1-1, with honest loyal person. Photo apprec. Box 83.

NOTT'M GUY, 36, attractive, 6'4", medium build, w/e, non-scene, seeks genuine guy for fun, friendship, 1-1. Enjoy evenings out in theatre, pubs etc. Genuine and sincere. Photo apprec. Box 84.

NOTTS. Two good looking lads, 24 and 27, couple, want to meet singles or couples for nice safe fun evenings/weekends. Go on let yourself go a bit. Write now. Photo if possible. Box 111.

LEICS/ANYWHERE, 30, sweet hearted soul, young, boyish looking, seeks truly romantic. I'm 5'6", smooth sexy body. Very smart guys 40+, shirts, ties, underwear, suits turn me on, mature businessmen. Box 85.

SOUTH YORKS. Professional guy, 50, seeking similar local guy for relationship. Interests include opera, theatre, music, travel. Photo apprec. Discretion assured. ALA. Box 86.

LEICESTER/NE LEICS area, 32, soh, honest, sincere, non-scene, non-smoker, seeks similar 30-36 for friendship, hopefully leading to 1-1. Photo & phone No. please. Genuine replies only. Box 87.

RETIRED GAY couple aged 68 & 772 seek couple or singles for weekend home visits, hols. Interests quite ordinary, gardening, tv, coach trips, film buffs, cooking. Box 88.

SHEFFIELD. Black male, 24, professional, honest, caring, attractive, athletic, seeks straight acting male anywhere. Photo if poss. ALA. Box 89.

LEICS/E MIDLANDS, guy, 32, 5'10", slim, seeking under 35, honest man who is easy going but ready for more than the 'club culture'. My interests, walking, music, cinema, fitness. Photo/phone apprec. Box 90.

NOTT'M, mature motor cyclist needs young man for pillion duties on day outings and perhaps simple servicing routines. Accom avail. Box 91.

LEICS, Indian, 36, slim, smooth, shaven whole body, seeks Black/White active riders for friendship, relationship, fun and drinks. Unshockable. Try me. Phone for quick reply. Bi sex most welcome. Box 92.

LINCOLNSHIRE

Thirty two, 5'4", stocky, muscular build. Fairly butch, fairly bright, good company, good sense of humour. Likes art, architecture, films, anything environmentally friendly or green, Victorian engineering, plants and animals. Box 112.

E MIDLANDS. Tall, handsome, smooth, fair, 6'2" nudist, swimmer, weights, own studio photography, seeks young good looking for safe exotic posing sessions. Exchange prints. Non-smokers. reliable, friendship assured. Box 93.

NOTT'M, 21 year old law student, 6', blond, interested in cinema, music, football. Looking for young, good looking and intelligent guys for friendship and poss relationship. Photo please. Box 94.

DERBY/NOTT'M. Good looking, slim, 40, ex-working class professional seeks similar guy for friendship, poss 1-1. Interests, walking, theatre, swimming, massage. Phone no. please. ALA. Box 95.

CHRIS, 33, into night clubs, meals, swimming, meeting different people. Clean shaven, green eyes, mousy brown hair, smooth chest. Into 60s-70s music. Looking for 1-1 with someone in 30s. Box 96.

BISEXUAL GUY, 28, 6', clean shaven, straight acting/looking, seeks similar genuine men around Leamington Spa for socialising and poss 1-1. Discretion req'd and returned. Box 97.

PASSIVE GUY, late 30s, very obliging, seeks active guys for safe fun. Cannot accom but can travel. Leics/Nott'm areas. Colour/build unimportant. Photo apprec. ALA. Older guys welcome. Box 98.

BRIGHT ARTISTIC slim male seeks active slim man 24-30 for poss loyal loving caring 1-1. I love music, pubs/clubs, nights in/out. Am practical and non-camp but quite sexy. Leics. Box 99.

EAST MIDS/ANYWHERE. Gay guy, 47, not bad looks, 5'9", black hair, genuine, sincere looking for someone to prove that age is no barrier to finding love again (21-45). ALAWP. Box 100.

MARRIED BI-GUY, Leics, n/s, n/fm. Average looking, cuddly smoker. Very discreet, 1st time advertiser seeks similar for no-ties safe fun. Can accom but not travel. ALA. no phone please. Box 101.

NOTT'M AREA, 46, medium build, 6', caring, non-scene, gsoh, loyal, discreet and loving with A-Z interests. Seeking genuine active guy 35/50, slim/medium build for sincere friendship/relat. ALAWP. Box 103.

VIDEOS starring Ed Willey, AL Parker, hairy guys wanted. Willing to swap from my collection. Also arty mags, Zeus Colt etc to give away. Mutual viewing for right guys! Box 104.

YOU LONELY, straight acting, non-scene, 21-30. Need special friend. Me 40, 6'5", young outlook, caring, discreet, loving. Let's get together and have a great time. Interests varied. Leics area. Box 105.

LEICS, 38, 5'6", 10.5 stone, cropped, clean shaven, smokeless. gsoh, leather/BD and lycra/wrestling oriented, seeks roughly similar guy for close physical companionship, poss 1-1. Many interests. Reliable. ALA. Box 106.

EAST MIDS, confident, affectionate, w/chair user, 22, seeks sincere thoughtful young looking guy 21-25 for mutually caring relationship. Can travel/accomm. Blonds esp welcome. ALAWP. Box 107.

PAUL FROM DERBY who replied to Box 18, January, please ring Pete on 0602-813673 as you forgot to put your number in your reply. Box 108.

NOTTS GUY, 21, good looking. Looking for fun and 1-1. Gsoh and non-smoker pref. Must like music! Box 109.

NOTT'M, two novice mountain bikers, 41 & 40, seek other off road riders, singles or



HELPLINES

BIRMINGHAM BLACK LESBIAN & GAY GROUP, 021-622-7351 for details.

COVENTRY FRIEND, Mon, Wed, Fri, 7.30-9.30pm. 0203-714199.

COVENTRY LESBIAN LINE, Wed, 7-9.30pm. 0203-717166.

COVENTRY MESMEN, 0203-224090.

DERBY BODY POSITIVE, Tue 10.30am-1.30pm, Thur 11.30am-4pm, 0332-292129.

DERBY FRIEND, Wed, 7-9.45pm. 0332-49333.

DERBY LESBIAN LINE, Wed, 7-9pm. 0332-41411.

DERBY AIDSLINE, Mon-Fri, 7-9pm, & Thur, 2-4pm. 0800-622738.

JEWISH LESBIAN & GAY HELPLINE, Mon & Thur, 7-10pm. 071-706-3123.

LEICESTER LESBIAN/GAYLINE, Mon-Fri, 7.30-10.30pm. 0533-550667.

LEICESTERSHIRE AIDS SUPPORT SERVICES, Mon-Fri, 9.30am-5pm. 0533-559995.

LINCOLNSHIRE AIDS VOLUNTARY GROUP, Mon, Wed, Fri, 9am-9pm, & Tues, Thur, 9am-5.30pm. 0522-513999.

LINCOLNSHIRE LESBIAN & GAY SWITCHBOARD, Thur & Sun, 7-10pm. 0522-535553.

NATIONAL BISEXUAL PHONELINE, Tue & Wed, 7.30-9.30pm. 081-569-7500.

NORTH STAFFS LESBIAN & GAY SWITCHBOARD, Mon, Wed, Fri 8-10pm, Sun 1-3pm, 0782-266998.

NORTHANTS GAYLINE, Tue 6.30-9.30pm, 0604-39722.

NORTHANTS LESBIAN LINE, Tue 7-9.30pm, 0604-39723.

NOTTINGHAM LESBIAN & GAY SWITCHBOARD, Mon-Fri, 7-10pm. 0602-411454.

NOTTINGHAM LESBIAN LINE, Mon & Wed, 7-9pm. 0602-410652.

NOTTINGHAM FRIEND, Tue, 7-10pm, 0602-474717.

NOTTINGHAM UNIVERSITY LESBIAN & GAYLINE, termtime Mon, 8-10pm. 0602-514999, internal 4999.

NOTTINGHAM GAY & LESBIAN YOUNG PEOPLE, Thur, 7.30pm-10pm, 0602-417779. Other times answerphone.

NOTTINGHAM AIDS INFO PROJECT, Mon-Wed & Fri, 9.30am-1pm, 2-5pm, 0602-411989. Other times answerphone.

SHEFFIELD AIDS LINE, Mon-Thur, 7-10pm. 0800-844334.

SHEFFIELD LESBIAN LINE, Thur, 7-10pm, 0742-581238.

SOUTH STAFFS FRIENDS, Wed, 7.30-9.30pm, 0889-570095.

WELLINGBOROUGH GAYLINE, Thur, 6.30-9.30pm, 0933-223591.

IN DISTRESS, Lesbian & Gay Mental Health Group, 021-622-6589.

classified...classified...classified...classified...

OUTPOST!

You can have OUTRIGHT delivered by first class post in a plain sealed envelope.

Especially useful for keeping up with the classifieds.

Send £5 cheque/postal order for 12 issues to OUTRIGHT, Box 4, West PDO, Nottingham, NG7 2DJ.

couples, for outings etc. Box 110.

CHESTERFIELD, 25, 5'9", non-smoker, seeks under 30 guy with varied interests for fun/friendship, poss 1-1 from Chesterfield or surrounding areas. Photo apprec. ALAWP. Box 113.

ASIAN SEEKS ASIAN, East Midlands, London, anywhere, any age over 21. Can accomm/travel. Box 114.

EAST MIDLANDS gay guy, 40s, Christian with good sense of humour, enjoys life but needs someone special to make it even better. Box 115.

DERBY, 26, blue eyes, No 2 crop, 6'7", slim, medium build, very sporty, straight acting and looking, likes leather, lycra, rubber, seeks biker or guys into same up to 40. ALA. Box 116.

LEICS, 32, tall, intelligent, romantic but also masculine (strong silent type), enjoys sport and travel, seeks similar (28-38) for friendship, poss leading to 1-1. Box 117.

NOTT'M, 25, good looking, straight acting, easy going, romantic, horny, honest, seeks guys under 25 for good safe fun, poss 1-1. Photo please. Box 118.

JOHN FROM NOTTS, 42, seeking male 30s-40s from Notts area. Must have car for friendship/relat. Hobbies, cycling, model rlys, 60s-70s music. Photo. 0602-252988 pms. Box 119.

REPLYING TO AN AD?

Please read HOW TO REPLY carefully, p 8. Replies without 2 first class stamps will not be forwarded.

MIXED PERSONAL

LEICS/NORTHANTS male, 48, medium build, caring, naturist, non-smoker. Bi's seeks women for naturist club. Interests music, pubs, French travel, eating in/out. Also couples, single male/females friendship, non-scene, nothing heavy. Box 76.

EAST MIDS/LEICS women sought by gay man for friendship, outings, movies. Really I'd like just to make some good women friends. Thanks. ALA. Box 77.

LEICS BI GUY, 38, likes pubs, clubs, eating out. Seeks friends m/f, couples welcome for fun nights in/out. Willing to try most things safe. Very frank letter gets mine.

Guaranteed. Thank you. Box 78.

SHEFFIELD LESBIAN into alternative lifestyles/therapies, personal growth, new age philosophies etc. Seeks spiritually aware friends/penpals, any area. Gender/sexuality unimportant. Open mindedness essential. ALA. Box 79.

LINCS/NOTTS/ANYWHERE, guy, 26, new to area. Enjoys music, theatre, pubs, eating out, concerts etc. Seeks males/females of similar age for friendship & socialising. Box 80.

NOTT'M, shy, attractive, lonely female, full sex change, would like to meet mature friendly people m/f for friendship. Must be honest and sincere with good soh. Box 81.

NOTT'M. White Jewish lesbian, 32, seeks two co-parents to have a child. Commitment, respect for children, willing to communicate openly-important. Any race, gender, nationality, dis/ability. Let's talk. Box 433.

WOMENS PERSONAL

KERRY BOWERS from Sutton in Ashfield. If you haven't noticed, I can't keep my eyes off you. So please contact me. Love, your little work mate. Please reply soon. Box 412.

TWENTY TWO year old bubbly Nott'm based fem fatal looking for fun & friendship from women in East Midlands area. Gsoh a must. Possibility of 1-1. ALAWP. Box 413.

DERBY FEMALE, young 40ish, smart, attractive, profess, non-smoker, sense of humour, various interests. Will travel, looking for similar to share 1-1 relat, going out or cosy nights in. ALA. Box 414.

SHEFFIELD LESBIAN, non-scene, seeks friend(s) locally for caring and fun times. Already in relat. Seeking warm friend(s). Write with phone no if poss. No butch's please. Bi's welcome. Photo please. Box 415.

IMAGINATION REQUIRED!

Bored with the same old ads? I am! Never mind hand holding and country walks. I want encounters that are dynamic, dirty and deviant. Don't you? Age unimportant. Box 426.

EAST MIDLANDS unhappy female, romantic, caring, sincere, genuine, gsoh, varied interests, animal lover, seeks same for friendship/relat, 35-43. Photo apprec. ALA. Any area. Non-smoker, car driver. Honest, reliable. Box 416.

EAST MIDLANDS lesbian, 41, gsoh, caring, loving, kind, romantic, honest, enjoys sport, likes animals, walking, eating out. Looking for similar, lasting friendship and 1-1. Box 417.

NW LINCS LADY seeks one submissive female aged 18-35 for live-in long-term servitude. You will have your own flat, small car and keep etc. Photos and full letters essential. Box 418.

**BARRIE
WARD
&
JULIAN
GRIFFITHS**

SOLICITORS

5, Clarendon Street,
Nottingham, NG1 5HS.
Telephone (0602) 412622
After hours (0602) 602324

FEMALE, 23, loving, caring, honest, gsoh, lonely, seeks same 22-28 for friendship, poss 1-1. Love writing, music, closeness of hearts and minds. Brighten up our lives! ALAWP guarantees same. Lincs. Box 419.

NOTT'M LESBIAN, young 44, attractive, caring, sense of humour. Seeks 1-1 relat. Music, theatre, cinema, walking, cosy evenings. Non-smoker, any age, genuine replies only. No bi's. ALA. Write today. Box 420.

DERBY/NOTTS seeks femme profess gentle lady for a femme to femme relat. Non-smoker, non-scene, 35-50. Interests theatre, dining out, walking, music, holidays. Box 421.

SHEFFIELD LESBIAN FEMINIST, social conscience, independent, fit 45, gsoh, loves walking, countryside, travel, music, dancing, cinema, food, friends. Seeks 1-1 with similar honest loving lesbian 35-45ish. Box 422.

LESBIAN, 30, attractive with dominant personality seeks slavegirl to serve my every need. Enter my fully equipped chambers and be dressed in rubber, leather and pvc. Photo & personal details. Box 423.

TO THE LEIC LESBIAN who is alone but won't suffer fools gladly? I am too? Like, fit the description you're looking for. If interested write. Box 424.

GAY FEMALE seeks similar females for friendship. Box 425.

EAST MIDLANDS

**Gay female, non-smoker,
interests include cinema,
theatre, dining out, countryside.
Feminine, seeks same,
non-scene, 35-45. Box 427.**

GAY SINGLE white female, feminine, seeks new friends 24+ for fun, socialising and support. Only honest, sincere and mentally sane need reply. Photo if poss. Mansfield/Notts areas. ALA. Box 428.

SHEFFIELD Black lesbian, 20s, caring, loving, honest, seeks similar for friendship/relationship. Photo if poss. ALA. Box 429.

NOTTS WOMAN, 28, sincere, sensitive, caring, enjoys walking in the countryside, cooking, dancing, travel, seeks good company, chats and a little romance. Box 430.

BLACK LESBIAN MUM. You fed up of nowhere to go with children at weekends, feel isolated, need a friend and companionship? Then please write, all nationalities welcome. Box 431.

EAST MIDLANDS, 34, seeks non-smoking lesbian for friendship, ideally lasting relationship. Honest, caring. Interests include cinema, theatre, eating out, walks, days out, cosy evenings in? Please write. Box 432.

ACCOMMODATION

Advertise your accommodation wanted/offered using the classified ad form. Include your address or phone number in ad for quick replies or let us provide a box number free. Your ad will appear once.

Accommodation files are also kept by Nottingham Lesbian and Gay Switchboard, Derby Friend and Leicester Lesbian and Gayline: see the helpline panel on page 8.

FULLY FURN rm to let in fully furn/equipped hse. Fgch, double glazing. £45 pw incl. Phone extra. Deposit req'd. Stapleford, Nott'm. 0602-399341.

RM TO LET in Sutton in Ashfield area for single female. Box 637.

DERBY. Quiet rm to let in mod 2 bed flat. £40 pw incl use of all facs. Working male only please. Box 638.

MANSFIELD AREA, rm to let; lge, spacious, share rest of hse with owner. M/F. Pets etc. All mod cons. Bryan 0623-825016.

DERBY. 4 bedrm det house in good resid area to share with one other. 5 mins city centre. Caretaker No. 0773-824066.

ILKESTON. Lodger wanted to share hse with owner, pref 21+, male/female. Must be working. 0602-307644.

LEICESTER, rm avail in 2 bed flat nr shops & bus routes. All mod cons. £35 pw. 0533-881265

NUNEATON. Hse share, own rm, share facs with lesbian (prof, graduate) & 2 Yorks terriers. Close to Mways, easy access Coventry, B'ham, Leics, Nott'm. £140pcm, share bills. 0203-346330.

BEESTON. Rm avail in 2 bedrm terr hse nr rly stn. Gch, all mod cons, nr shops/city. £40pw inc bills exc phone. Bob 0602-678134.

NOTT'M, rm to let/hse share 3 bed hse, gdn, pking nr shops/buses, £30 pw + bills. Annette 0602-212891 or 081-948-7735.

BEECHDALE MEWS, share lux hse, own rm, sat tv, ans/phone, w/machine, d/washer, micro, fch, with young couple, male, £45 pw inc. No bills. Deposit req'd. Negot. Roy/Craig 0602-290021.

LEEDS, rms to let in shared house, washer, fridge, freezer, close City Centre. £42 pw inc bills, + phone. (0532) 789899.

COPY DATES

No. 47: 25th Feb

No. 48: 25th March

No. 49: 22nd April

PUBLICATION DATES

4th March, 1st April, 30th April

HOW TO PLACE AN AD. Complete the form below. Write clearly please, and punctuate! Keep ads short and sweet: max 30 words. OUTRIGHT may refuse or amend ads. One free ad per issue. Enhance your ad in semi-display for £4.

CLASSIFIED ADS

Complete and return to Outright,
PO Box 4, West PDO, Nottingham, NG7 2DJ.

Mens Womens Mixed Accommm..... Semi-display..... (£4 cheque/PO)

Name.....

Address.....

..... Post code.....

HYSON GREEN WHOLEFOODS

Mon-Sat 9.30-6
(Thurs/Fri till late)

WE SELL
ENVIRONMENTALLY SAFE
& CRUELTY FREE
CLEANERS AND
TOILETRIES, A GOOD
SELECTION OF HERBS &
SPICES, FRESH BREAD AND
A WIDE SELECTION OF
SNACK FOODS.

ORDERS TAKEN

72 RADFORD ROAD
NOTTINGHAM 0602 702056

ACCENTS

Most Outright readers live in cities, no more than a mile or two from a gay pub and club, and it sometimes comes as a surprise to city dwellers to discover a thriving social scene in smaller towns and villages.

This month we hear from Brian and the 'Accents' gay men's group in Chesterfield.

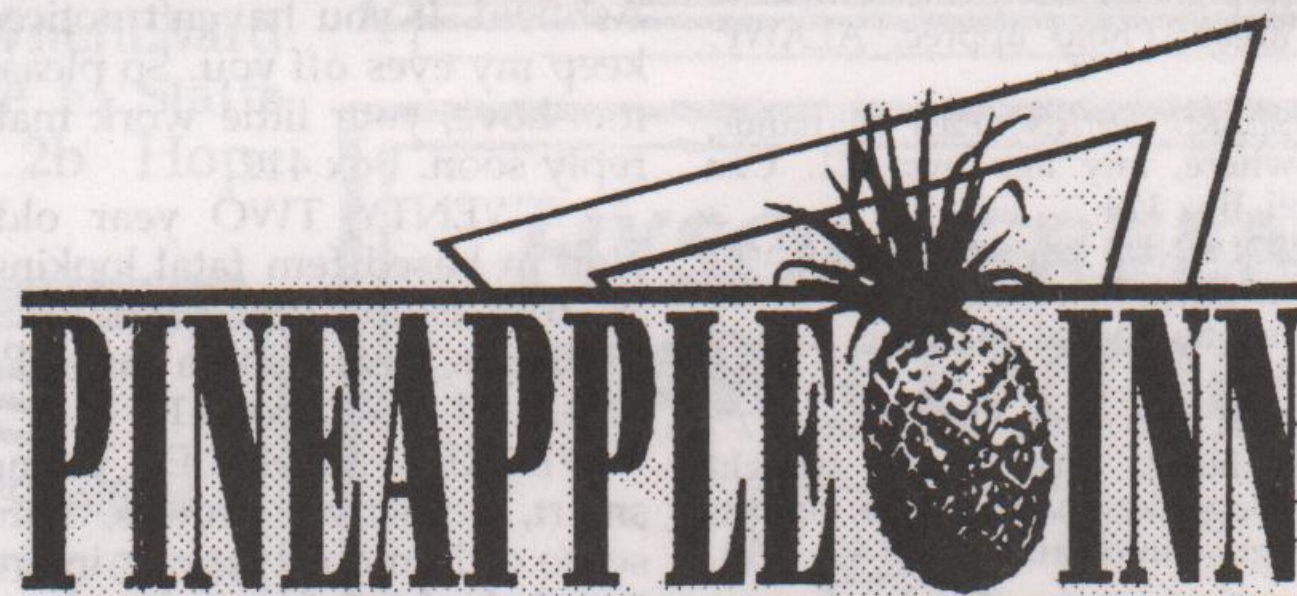
"In the lead up to Christmas about six nice dinner parties developed when pals phoned, and I steered them to a favourite moorland pub for a bar meal. Marsden's Bar was popular too, with its usual welcoming atmosphere.

"The snow quietened the few days after Christmas, with our village nearly cut off. I cancelled the group 'Open House' on 28th December but by the evening the snow had cleared and we had about a dozen turn out for a pleasant evening.

"The Group New Year Party was again a success, with much fun and frolics and a professional stripper 'Mystery 1' for good measure. The event started at 6pm on New Year's Eve - there were ten still present for breakfast - and finished some twenty four hours later when a somewhat shattered 'Mystery 1' left for his next appointment in Derby!

"We continue to meet on Tuesday evenings and extend a warm welcome to gay men from far and wide. I never fail to get pleasure from a smiling face when a new guy finds his feet through our group. You just never know how much you may be changing the world for someone."

The group meets weekly on Tuesdays at 8.30pm at Marsden's Bar, Marsden Street, Chesterfield. For more details phone Brian on 0773-833142.



27 BURLEYS WAY • LEICESTER
TEL: 0533 • 623384
Opposite St. Margarets Bus Station

Wed 9th Feb - HIGH & MIGHTY - drag
Sun 13th Feb - NICKY STORM - stripper

Wed 16th Feb
**VALENTINE'S PARTY NIGHT with
TARTS ON TOUR - drag, plus
BREN - stripper,
includes Pineapple 'Blind Date'**

Sat 19th Feb
WOMEN ONLY NIGHT upstairs bar

Sun 20th Feb - PRIVATE 69 - stripper

Wed 23rd Feb - DAVID DESIRE - drag

Sun 27th Feb - TROUBLE - stripper

Wed 2nd Mar - YETTA ROSE - drag

Sun 6th Mar - ROUGH RIDER - stripper

Wed 9th Mar - FONTAINE RODGERS -
drag



OLD VIC, 22 FLETCHER GATE, NOTTINGHAM

The newest and most successful
women only club around - what do
our customers say about Cello's?

"The 'in' place to be"

"A friendly, welcoming place to come"

"Brilliant - we really look forward to it"

For the best entertainment come to
Cello's - it's the place to go!

Celebrate VALENTINE'S on
SATURDAY 12th FEBRUARY

8pm - 1am

£2.50 WITH FLYER

March Disco — Saturday 5th

STRICTLY NO ADMISSION AFTER 10.30pm
(Management reserve the right to be selective)