

March 1994  
Issue 47

# outright!

free!

for gays lesbians and bisexuals in central england

## SHAME!

The defeat of Edwina Currie's amendment to the Criminal Justice Bill for an equal age of consent of 16 was a shameful act of collective homophobia by MPs. The defeat is more than a setback for young gay men: a deliberate snub to all gays, lesbians and bisexuals.



Edwina Currie MP

In the Midlands a majority of MPs supported 16. Apart from Edwina Currie, the only other MP from the region who spoke in the debate was Joe Ashton who, in his unmistakably wily way, referred to driving and drinking laws and asked "Why do we not have everything at 16 as my Right Hon. Friend would like?" but then went on to vote against it! David Blunkett was the other Labour MP to vote against 16 and he is now facing pressures to resign as front bench Health spokesman. Health considerations had been one of the main arguments put

forward for 16.

With the Stonewall campaign targetted at 'Yes for 16' - a strategy which almost paid off - the tactics on 18 were ignored. John Heppell (above) however, voted tactically to defeat 18. A no-to-18 proposition might have been difficult to organise, but the failure of 18 after the defeat of 16 would have led to an unstoppable build up for change in which compromises would have stood no chance. Many hopes are now being placed in the European Court of Human Rights, but perhaps the struggle within our own movement has only just begun. (See page 2 - 'How They voted').



John Heppell MP

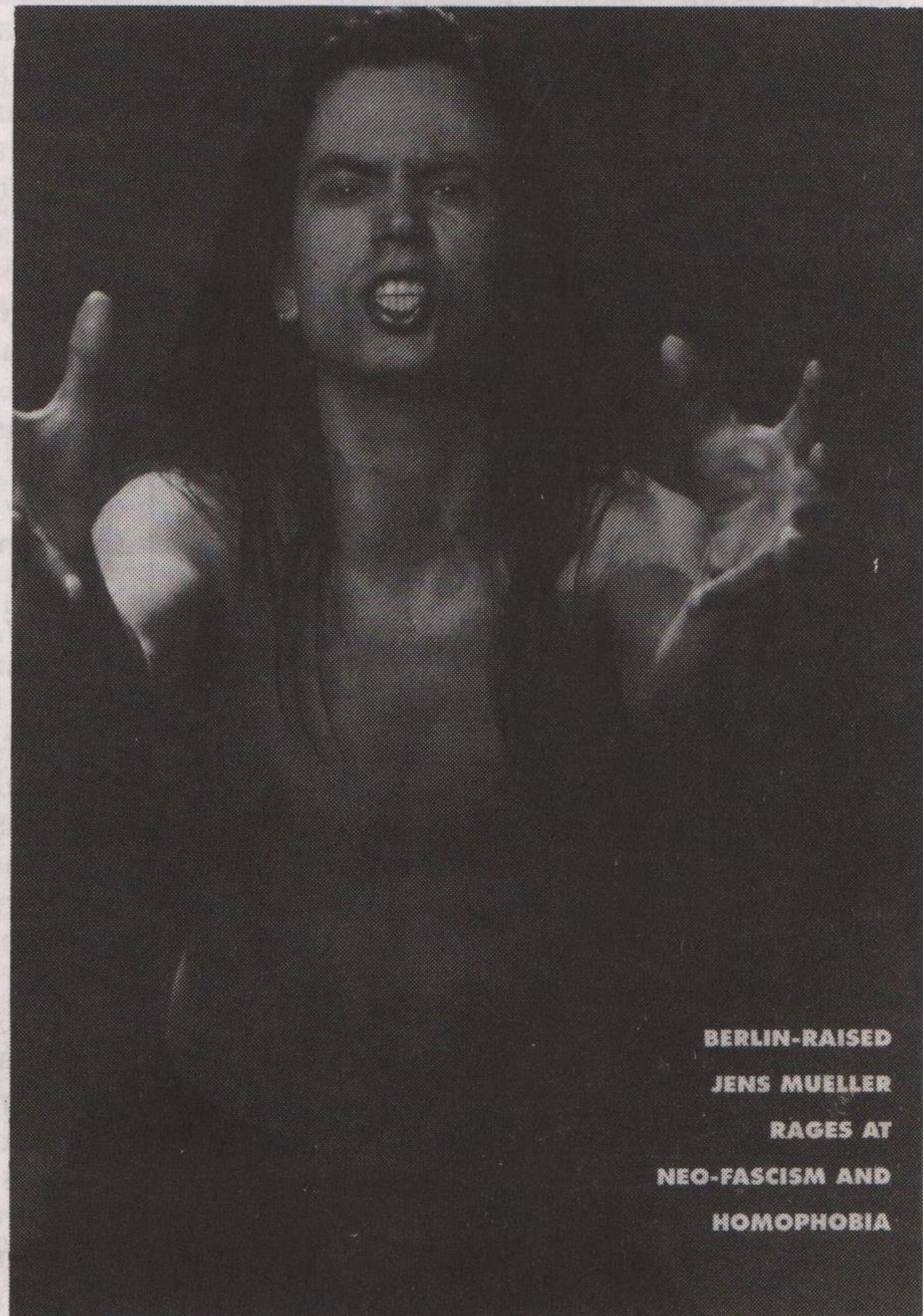
## LESBIANS ATTACKED

Four lesbians were attacked by a man and his partner and required hospital treatment, as they left The Old Vic Tavern in Nottingham on Thursday 17th February. The incident followed complaints made to the pub management about the man's homophobic remarks earlier in the evening.



One of the lesbians attacked, Alix (pictured) sustained a broken nose. She said: "The man and his woman friend had been giving us homophobic abuse inside the pub, and despite our complaining about them, they were allowed to stay until closing time." Said Amanda who sustained two cracked ribs: "One of the staff told the man to behave but he continued to insult us and was allowed to carry on drinking. To make matters worse another woman employee actually came over to the man and said that

(continued on page 4)



BERLIN-RAISED  
JENS MUELLER  
RAGES AT  
NEO-FASCISM AND  
HOMOPHOBIA

## OUTBREAK

### A weekend for Lesbians

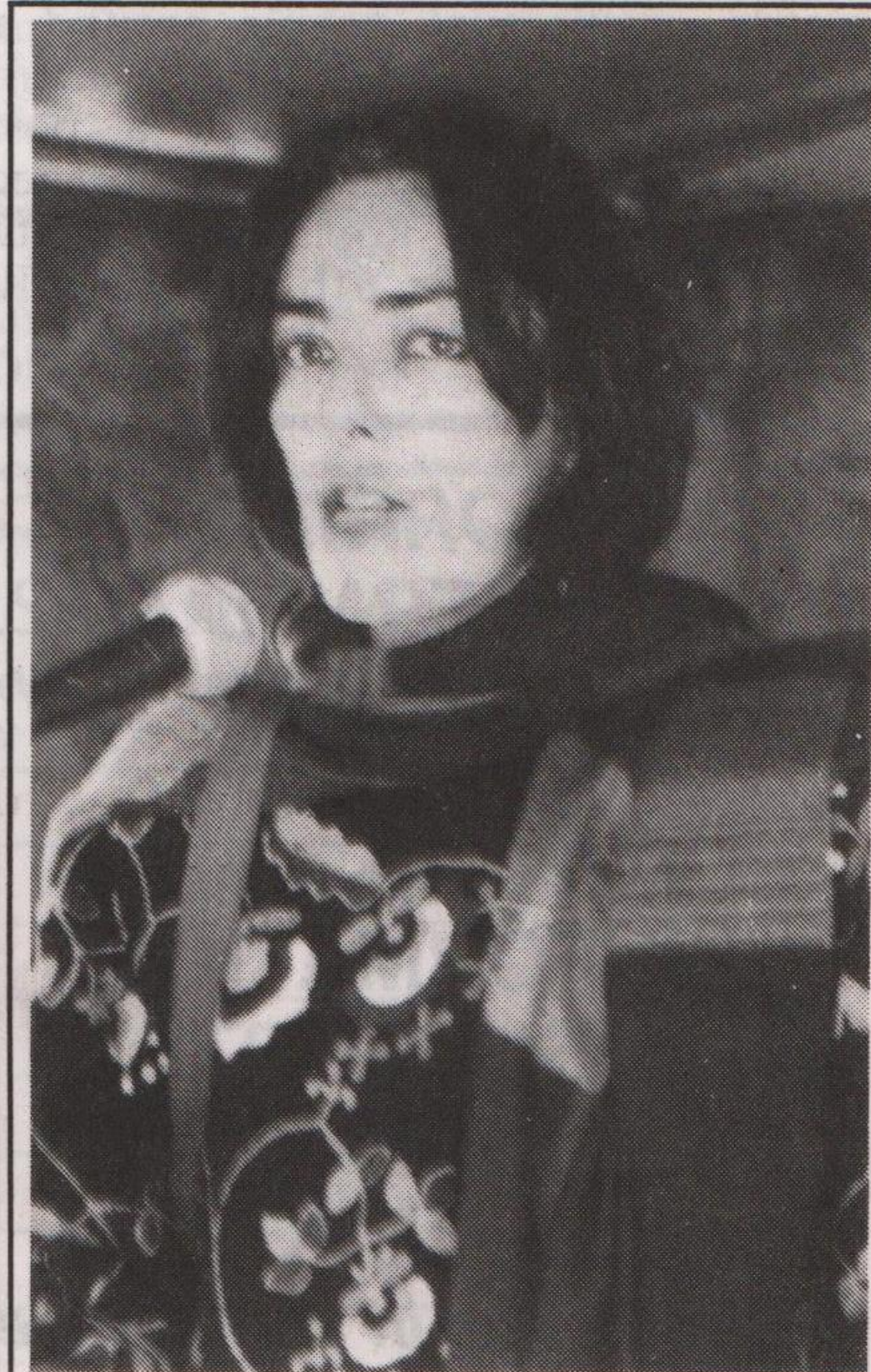
Spend a residential weekend with a difference in the Derbyshire Peak District with twenty seven other Lesbians.

A safe environment in which we can spend leisure time together with women of different ages and interests. During the weekend take part in art, photography, music, walking or just relaxing.

Here is your chance to take part at your own level in a non-competitive way, making friends to provide continuing supportive friendships for the future.

The weekend break is 13th - 15th May. Sliding scale from £33 to £55.

OUTBREAK: Box 88, 15 Goosegate, Hockley, Nottingham, NG1 1FE. To include a stamped addressed envelope for return information.



Out lesbian mum, Pat Paris addressing the Anti-Fascist Rally in Market Square, Nottingham, called to protest at the fascist attack on Mushroom Bookshop. Over 1,000 people took part in the march from the Forest Recreation Ground to the Market Square. More pictures and story on page 3.



# HOW THEY VOTED

(Continued from page 1)

Of the 46 MPs in the Outright distribution area twenty four voted for 16 and eighteen voted against. Three were absent or abstained. Voting almost followed party lines, but not quite. Twenty Labour MPs voted for 16 and two voted against: Joe Ashton (Bassetlaw) and David Blunkett (Sheffield Brightside). Paddy Tipping had indicated support but was absent. Four Conservative MPs supported 16: Edwina Currie (Derbys S), David Ashby (Leics NW), James Lester (Broxtowe) and Alan Duncan (Rutland & Melton); the other fifteen Tories voted against, except Richard Alexander and Sir Richard Body who were absent or abstained.



David Blunkett - voted against 16.

On the vote for 18, thirty five of the region's MPs supported and only seven voted against. The seven included John Heppell (Lab, Nottingham N) who had supported 16 in the previous vote, and six Tories: Ivan Lawrence (Burton), Andrew Robathan (Blaby), Angela Knight (Erewash), Edward Leigh (Gainsborough), Irvine Patnick (Sheffield Hallam) and Sir Dudley Smith (Warwick & Leamington). These six MPs represent the hard core of homophobia in the House of Commons.

## BISEXUAL AID

On March 24th Nottingham Bisexual Group host a meeting with speakers from the Health Education Authority to discuss their recent report, including availability of HIV/AIDS information, and to look at the gaps in existing services. The presentation includes the report's findings, as well as discussion about specific needs of bisexual people around relevancy and accessibility. This is an open meeting, and anyone with a positive interest in the issues is encouraged to attend at 7.30pm, Room 3, International Community Centre, 61b Mansfield Road, Nottingham.

### WORRIED, CONCERNED OR AFFECTED BY HIV OR AIDS?

We're here to help!  
INFORMATION  
SUPPORT  
DROP-IN  
BEFRIENDING

Contact us in confidence:  
(0602) 411989

8 Eldon Chambers,  
Wheeler Gate,  
Nottingham NG1 2NS.  
Nottingham AIDS  
Information Project

Charity Regn. No. 702070

## TATTOO YOU ? NOT

Tattoos - love or hate them are the treasure or torment of many. This ancient established art form ranging from grand works of art to shoddy DIY efforts, used to be an indelible reminder of past lovers and tastes, such was the permanence of tattooing.

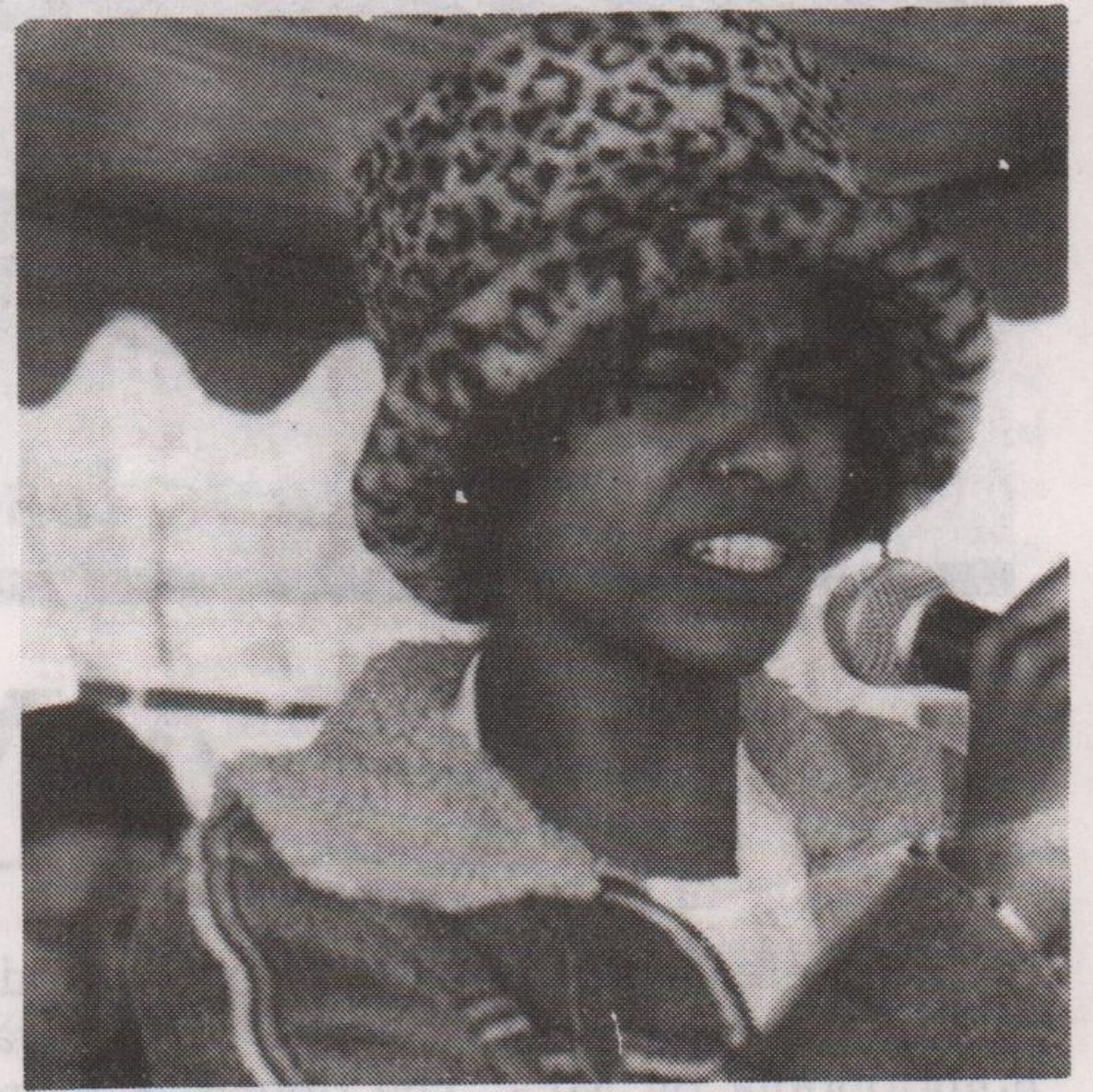
Happily, new technology now exists and the regrets and mistakes of yesterday can be effortlessly erased, without scarring, thanks to the use of lasers.

Jason 22, had home-done tattoos at the age of 16. Hearing a Laserase radio advert he checked it out with his GP. Following a free consultation and assessment he underwent a course of treatment at Laserase and quickly rid himself of his tattoos, and the embarrassment which they had caused him.

Bev, a 20 year old woman, wanted the name of her ex-lover removed from her tattoo, and discovered Laserase via a woman's magazine and the Yellow Pages. Initially reluctant, she was relieved to find a sympathetic and understanding woman counsellor. She went ahead with treatment, leaving her much prized tattoo intact, minus the unwanted name, which was a major relief to her and her girlfriend.

Curious about this revolutionary treatment, we asked a doctor friend for his advice. He said in his view Laser removal is by far the best option in terms of safety and overall cost, compared to the guaranteed scarring which results from all other methods of removal. The East Midlands Laserase centre, is a professional and well run clinic offering excellent treatment schedules, sensible advice and free copies of the most comprehensive guide to tattoo removal available to date.

If you would like more information on any aspect of tattoo removal phone (0602) 799633.



Helen McDonald singing 'Strange Fruit' at the anti-fascist rally last month.

## "MAN FOR MEN"

Personal services for the  
discerning male.

Qualified mature masseur.

Relaxation/invigoration/sensuality

Body shaving - hair no. 1 & 2 crops

Fantasy & photography.

In/out visits - evenings/weekends

Brian M. 0773 833142

## STONEWALL BREAKS

### GAY MEN TOGETHER

3rd-5th June, 1994

Following our two sell-out weekend breaks recently we are pleased to offer an early summer break at the same venue in the Derbyshire Peak District, near Matlock from 3rd-5th June.

We don't often have the opportunity to spend time together with other gay men of all ages and be ourselves in pleasant, gay-safe surroundings.

Nestling in 'Little Switzerland' our base straddles the High Peak Trail, ideally placed for walking, cycling, climbing etc. five miles from Matlock. We are in centrally-heated, Dormitory-style accommodation.

Activities may include creative arts, massage, walking, canoeing face painting, singing, circle dancing etc. and a five-course, candlelit dinner on the Saturday night.

Sliding scale of all inclusive charges from £29. Further details from (0602) 780124 or write 'Stonewall Breaks' PO Box 4, West PDO, Nottingham, NG7 2DJ.

### A FREE SERVICE FOR GAY MEN IN NOTTINGHAM

Information and confidential  
counselling on a range of issues  
around HIV testing, safer sex and  
sexual well-being in general.

\*free condoms

\*free KY

\*Hepatitis B vaccination

\*meeting place for groups

\*videos

\*no appointment necessary

All in comfortable surroundings at  
NOTTINGHAM HEALTH SHOP

Broad Street, Hockley, Nottingham

Drop in Mon-Fri 9am-5pm or ring

(0602) 475414



# SAMBAS AGAINST FASCISM



Over 1,000 marched to the beat of a Samba band, in Nottingham in protest at a fascist attack on Mushroom Independent Bookshop recently. Speakers included Ross Bradshaw of Mushroom, John Heppell MP, Pat Paris, Cllr. Eunice Campbell, David Weaver, National Black Caucus, and Dave Landau, Jewish Socialist Group. Helen McDonald of Notts. Anti-Fascist Alliance sang the hauntingly beautiful Billie Holiday song, "Strange Fruit". OUTRIGHT was one of a number of local sponsors of the demonstration and rally.

Out lesbian-parent, Pat Paris told the crowd 'We live in a society that gives freedom of speech to people who openly espouse hatred and violence towards others and which legislates against and criminalises love. I am a target for fascists because I am a lesbian. Others will be because they may be black, Jewish, women or disabled. We all have our daily battles to fight for survival. Often we are too caught up in our own struggles to recognise someone else's but I am proud to be here today as part of a group that holds so much personal diversity'.

'Blood & Honour', who attacked Mushroom Bookshop in Nottingham in January, have been banned from meeting at the Alexandra Social Club in Sandiacre, and at the 'Red Lion' in Heanor which will not re-open as a nazi pub. The 32 fascists arrested are due to report to the police in mid-March for charges or otherwise.

## LIFE IS *NOT* THE SAME IF YOU'RE GAY

The laws surrounding pensions make it difficult for unmarried couples to plan for retirement. When you are gay, it is not only the law that makes it difficult. It is the misconceptions surrounding intestacy and trusts. In other words, if you think you may ever want a partner to benefit from your pension plan in the event of your death you cannot leave it to chance.

Your independent financial adviser should not only inform you of the costs involved of any particular pension policy, but the size, strength and past performance of the pension office. Financial advice, however, does not stop there.

To us, getting it right seems surprisingly simple. We do not charge and our service is confidential.

An Appointed Representative of  
**GAY MONEY**  
**STRAIGHT ADVICE**  
FIMBRA  
ivan massow associates  
195 Wardour Street, London W1  
Tel: 071-494-1848 Fax: 071-494-1849

Andrew and Paul  
welcome you to  
**THE KING'S HEAD**  
Emery Lane, Boston  
0205 362926

**BOSTON'S ONLY  
GAY-RUN PUB**

**BLACKTHORN**  
BOOKS CO-OPERATIVE

Leicester's Radical Bookshop

**We support the  
fight for an  
equal age of  
consent at 16.  
The struggle  
goes on.**

70, High Street, Leicester  
(0533) 621896



# LESBIANS ATTACKED

(continued from front page)

the reason we were lesbians was because we were too ugly and couldn't get men! At one point the band, 'Kelly's Heroes' stopped playing and everyone could see what was happening."

"As we left the Old Vic we ignored the insults of the couple but then the man and his partner followed us and wouldn't leave us alone. The woman egged the man on to attack us; we were first pushed and then he charged at us like a battering ram, screaming, injuring us. A band member of 'Kelly's Heroes' heard the commotion and rushed out of the pub to try and pull the man away, and was hurt herself."

One of the women, Chris, rushed into the pub and shouted for someone to call the police but the management refused to do so. Eventually the police arrived and arrested the man.

OUTRIGHT spoke to the Duty Manager at The Old Vic who didn't wish to be named. She said that she was called over to a table at 10.30pm. "I told this man to be quiet. Usually when there's trouble we evict all parties from our premises including the people who have been assaulted. Later one of the ladies asked us to call the police but as the incident happened outside I told her to use our payphone in the foyer. These ladies have never been in our pub before. We have a very successful lesbian one-nighter once a month and never have any trouble there". She denied the women were being victimised by the pub or that it was anti-lesbian.

In a letter of reply to the 'Old Vic Four', the Managing Director of The Old Vic, Jeff Garratt stated that though he was upset at the personal injuries of the women, the pub didn't allow people to re-enter after their licence time of 10.30pm. It was not the Old Vic's policy to eject people as it only aggravated incidents. "I feel the problem is between yourself and the individuals concerned", he added.

OUTRIGHT spoke to Linda organiser of Cello's, the lesbian monthly one-nighter. She said: "We very much regret that these ladies were beaten up. Our nights are very well organised and we never have any trouble. From next month we hope to be taking over the whole pub for our one-nighter which will make it even safer for lesbians to go as we employ our own staff to work with the Old Vic Staff. I can understand how these women feel but we could risk losing the one-nighter if they call for the boycott, which will mean even less choice for lesbians in Nottingham".

But Amanda and Alix are not persuaded. "We have asked Linda of Cellos to support us and move somewhere else. The test of a safe space is whether you feel safe any night of the week not just on the lesbian one-nighter. The Old Vic clearly is not a safe space for lesbians to go. We are not prepared to be abused and harassed in this way when it seems bullying is condoned by the management of the Old Vic. We will call for a boycott of the Old Vic by all lesbians". As we go to press, a number of organisations and individuals have supported the boycott. Meanwhile, preparations for the monthly Cello's disco on the 5th March continue.

A 21 year-old Nottingham man appeared in court on the 27th February, charged on two counts of actual bodily harm and has been remanded on bail until the 30th March.

# GONE FOR A BURTON!

Lesbians and gays in Burton-on-Trent are likely to have their own venue at last if the plans of the Burnt Gate Inn take off as expected. Their first night took place on March 2nd, and will be every Wednesday from 7pm to 11.30pm, with a happy hour from 7pm to 8pm. Olga the licensee, promises the usual type of taped music.

Olga runs the pub with her son and daughter and felt it was time there was somewhere for the gay community to go in Burton. "I got the idea from some of my lesbian friends, as there's nothing in the area."

The Burnt Gate Inn, a freehouse, is on Hopley Road, Anslow, Burton on Trent, DE13 9PY. Burton has been without a gay venue for many years and we wish this new venture well.

## IS YOUR BRIGHT IDEA STUCK ON THE DRAWING BOARD?

The Nottingham City Council Centre for Product Development provides practical support to help companies and enterprising individuals turn technical ideas into commercial successes.

We support the application of electronic & mechanical technology with:

- Impartial Advice
- A Prototyping Service
- Workshop facilities

Call us to discuss your ideas and how we can help on

**0602 782200**

**YOU HAVE THE IDEAS ... WE HAVE THE TECHNOLOGY**

## THE MEN'S SEXUAL HEALTH PROJECT

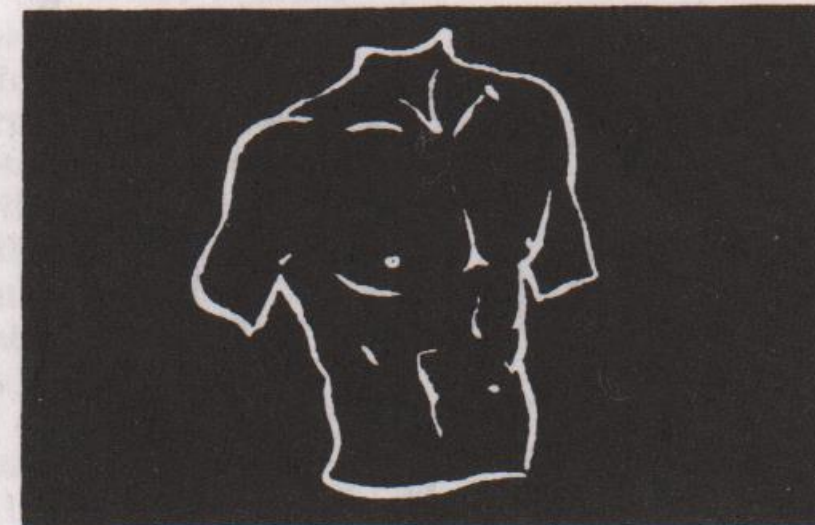
45, King Street, Leicester

ALL OUR SERVICES ARE FREE AND  
CONFIDENTIAL YOU DON'T EVEN HAVE TO  
GIVE YOUR NAME

Available free to all men who have sex with men regardless of age, sexuality, race, religion, disability, or antibody status.

### TRADE SAFELY

*Do you like sex? We do. Do you use the Gay scene?  
Do you cottage or cruise? Did you know that a gay  
man tests HIV + every hour of the working week?  
Did you know we can now do something about this?*



*TRADE is a group of men who have sex with men who want to do something about the growing HIV epidemic.*

**FOR THE DATE OF OUR NEXT MEETING AT  
45, KING STREET, LEICESTER, PHONE ANDY.**

*If you'd like to get involved, why not come along.*

For more information phone Andy:  
0533 541747 (office hours)

## FREE CONDOM DROP IN

Opening times

Every Thursday 11.30am-2.30pm

Every Friday 11.30am-2.30pm

Second Saturday each month 12.00am-3.00pm

(No appointment necessary)

*If you have difficulties visiting during these times ring  
0533-541747 for an appointment free.... (and easy)*

**ABSOLUTELY FREE!**

\*A choice of gay safe condoms \*Water based lubricants \*Dental dams, latex gloves \*Information, counselling and support on HIV/AIDS, sexuality, relationships, HIV testing, safer sex or any concerns about sexual health  
\*Leaflets, safer sex videos, posters etc.

## METRO CINEMA

Green Lane, Derby: box office (0332) 340170

### FAREWELL MY CONCUBINE

Dir: Chen Kaige/HK/1993/156 mins.

Joint winner of the Palme D'Or and winner of the International Critic's Prize at Cannes. This magnificent epic covers five turbulent decades from the Warlord Period of the 1920's through the turmoil of the Cultural Revolution. Two boys grow up in the brutal and highly artificial world of the Peking Opera Academy. When one marries, the other is consumed by a jealous rage, and the two fall out.

Betrayal becomes the only course for self preservation. "Magnificent acting and superb images adorn Chen Kaige's bold and ambitious film. A tour de force. Unmissable" Derek Malcolm.

Fri 4th-Thur 10 Mar. Fri 8pm, Sat & Sun 5pm/8pm, Tues - Thur 7.30pm.

### BHAJI ON THE BEACH

Dir: Gurinder Chadha/UK/1993/99 mins.

Asian director Gurinder Chadha is at the forefront of developing a new sensibility in British culture. Her films focus on representing the lives of the new Black British communities.

A group of Asian women from Birmingham explore the charm and tackiness of Blackpool. A day to check-out the local lads, explore

chance encounters, get caught up with a group of male strippers. Other women reflect on the problems in their lives. Ginder seeks a break from the refuge where she and her five year-old son are hiding from her violent husband. Hashida has just discovered she is pregnant by the West Indian boyfriend her parents don't know exists.

Fri 18-Sun 20 Mar. Fri & Sat 6.00pm, Sun 5.30pm.

### MANHATTAN MURDER MYSTERY

Dir: Woody Allen/USA/93 mins.

A comedy thriller in the best traditions of The Cat and the Canary, with vanishing corpses and bickering leads but enhanced by a dash of Allen's neurotic humour. Allen, teamed up again with Diane Keaton, plays a vaguely twitchy middle-class New York husband who comes across what looks increasingly like a murder in the apartment across the hall, where an elderly couple bore him to distraction with their hospitality. "Civilised film making and a consistent pleasure to watch". Derek Malcolm.

Fri 25-Thur 31 Mar. Fri & Sat 6.30/8.30pm, Sun 6.00/ 8.00pm, Tues- Thur 9pm.



# SAMPLES by Simon Smalley

## What Has She Got On?

Some twelve months after gyrating gays had discarded it as ex-Hi-NRG hit no. 1,632, D:Ream's anthemic single 'Things Can Only Get Better' finally hit the top slot on its second attempt, prompting the rapid re-package and re-promotion of the previously flopette LP from the check-suited chart topper. Progressing from trendy remixers to gusset-wetting Top of the Pops teeny fodder, 'D:Ream On Vol. 1' is destined to be played in Dorothy Perkins shops the country over. It's a good job the single isn't like the opening track as it'd be a mite optimistic - the other tracks sound like the legendary 'lost' third Bros album. A bit of a strange brew of soaring strings blending with a Saturday Night Fever ambience splashed with a Beloved-esque vocal which sounds like he's rushed back from the lavvy and missed his cue. It's successful in an obvious hit single spin-off sort of way, but for me loses any credibility with the token ballad 'Star' - I mean, check this out! - 'Star-light shin-ing bright' - I'm amazed Cliff hasn't grabbed it for his next Christmas single. Sorry, gal, but a new direction and a new tailor is called for!

## Jungle Jezebels

Are you sitting comfortably? Prepare for 'A holistic concept in sound... a blending... an ambience which penetrates your emotional being and moves you on...' Nope, this isn't the twaddle that I spout after partaking of Mother Nature's green grass of home (purely medicinal, officer) but the promo blurb for the Deep Forest album. I say take three words - succulent, exotic and steamy, I know you immediately think of moi, but you can also apply them to this concept which imaginatively incorporates indigenous vocals with synthesised treatments to repeat and restructure them as new (age) instruments. Many scoff, but I find it works in a sensitive, refreshing way without submerging into the quick-sands of ambient bandwagon jumping. The rhythmically pulsing tribal tracks 'Hunting' and 'Nightbird' are balanced

with the mellow moments of the evocative 'First Twilight' which transports you on a serene glide through the everglades so successfully that you feel like the sweaty man in the Sure deodorant advert - but I couldn't find him. Take this, a pack of Queen of the Night joss sticks and get Earth Conscious, maaaaan!

## Pooper Scooper

Over the years I've tried, Gawd knows I've tried, but I cannot get to grips with rap and its counterpart gansta rap. I try to find the positive things in it to no avail, probably 'cos there are none. It's all the macho crotch-grabbing my dick's my gun all women are whores there for my pleasure/abuse that puts me off. So, putting me off even further is a puerile piece of poop called 'Doggy Style' by a misogynistic homophobic meathead by the name of Snoop Doggy Dogg. This is dangerous - not in the Rock & Roll tradition of lock up yer daughters! Elvis/Little Richard/Rolling Stones/Sex Pistols are on the way, but in a nasty, vicious blinkered way. Without entering the censorship/freedom of speech debate, I find it alarming that a generation of (mostly) males are being bottle fed this stuff. It goes gun in hand with the 'shoot the queers' attitude of Buju Banton, Shabba Ranks, Cypress Hill etc and makes you think... how can you win? To quote 'The Fly'... be afraid. Be very afraid. And on that light note, I'll bid you farewell!

*'I'll have a state funeral, send all the boys to the saunas....turn the House of Commons into a backroom for the under-21s for a night'. DEREK JARMAN*

## LINCOLNSHIRE AIDS VOLUNTARY GROUP

Tel (0522) 513999

**Mon, Wed, Fri 9am to 9pm  
Tues, Thur 9am to 5.30pm  
24 hour answerphone**

**For information, advice,  
support, buddying,  
safer sex etc**

**All calls confidential**

**Please call the above number  
or visit us in Lincoln at  
THE HEALTH SHOP,  
PORTLAND HOUSE,  
3, PORTLAND STREET,  
LINCOLN.**

## DERBYSHIRE BODY POSITIVE for friends, carers, partners who are HIV+

Please contact PO Box 124,  
DERBY DE1 9NZ, or phone us

**Tuesdays:  
10.30am - 1.30pm  
Thursdays:  
11.30am - 4pm  
0332 - 292129**

## LESBIAN HOUSING CO-OP

Nottingham

2 spaces available in  
shared housing.  
£34 per week plus bills.

Contact Lesbian Line (0602)  
410652, Mon. & Wed. 7-9pm

**ANVIL  
PRESS**

**PRINT &  
DESIGN**

**A WORKERS  
CO-OPERATIVE**

**Tel: 0332 298213**

## MONEY FOR WOMEN

**FORGET THE MEN IN  
GREY SUITS**

We are a long established firm of friendly, independent, financial advisors who are sympathetic to the unique requirements of women.

If you are interested in investing or borrowing money, buying a house or insuring anything - from your home to your health:

- please phone 0602 - 617447 and ask for Sue or Kez (evenings and weekends 0602 - 521917)

*Green & Ethical Investments  
Special Rates for Lady Drivers  
Finance & Insurance For Women  
By Women*

Your home is at risk if you do not keep up repayments on a mortgage or another loan secured on it.

Beaver Associates are appointed representatives of Financial Options Ltd.



**BEAVER ASSOCIATES  
(Nott'm) LTD**

6 Meadow Road, Netherfield,  
Nottingham NG4 2FF



# GETTING IT RIGHT

A joint initiative by the Health Education Authority and the National Union of Journalists has resulted in the publication of guidelines for anyone involved in media reporting. This useful booklet is long overdue, twelve years into the epidemic. Clause 3 of the NUJ's Code of Conduct urges journalists to 'make sure that the information disseminated is fair and accurate; avoid expressing comment or conjecture as established fact; and avoid falsification by distortion, selection or misrepresentation'. The tabloid press especially and the majority of the so-called 'quality press' would do well to take note of its contents. Copies are available from Clive Aylesbury, AIDS Liaison Officer, Southern Derbyshire Health Authority, Aids Liaison Unit, 27 Normanton Road, Derby DE1 2GJ.

## GAY MEN'S WEEK at WASDALE in CUMBRIA

Sat. 9 April-Sat. 16 April

*An Indoor and Outdoor activity Week with the Edward Carpenter Community*

Spend a residential week in an unspoilt, hidden part of Cumbria with thirty other gay and bisexual men in a luxury youth hostel.

Walking, dancing, massage, climbing, aerobics, singing, workshops and much more.

An experience not to be missed. You can opt in where you want, and opt out too! There's plenty on offer indoors or out, wet or fine. On the last night there's usually a cabaret put together from those who want to take part. And just in case you feel a bit lost, everyone will be part of a small group of around six people; a chance to get to know a few people well if you want.

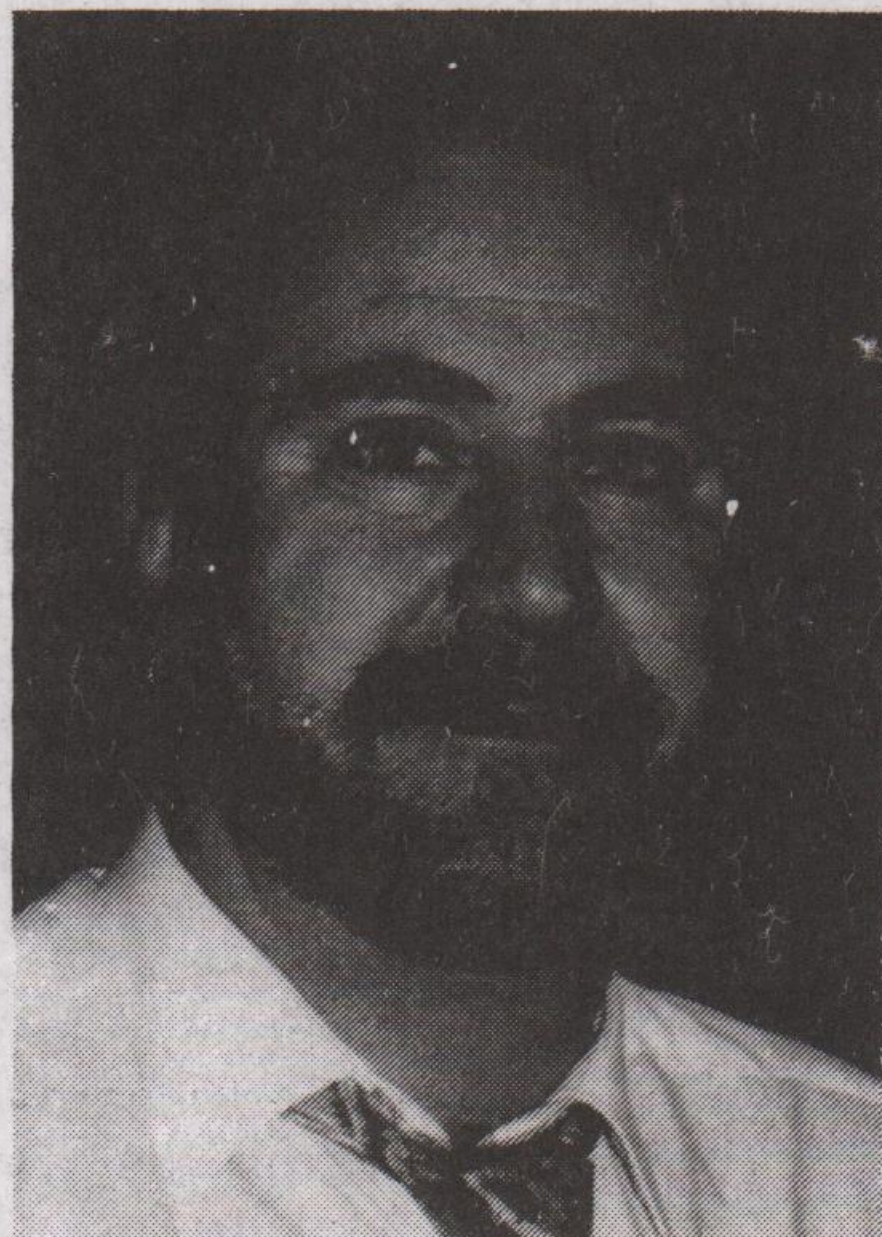
Sliding scale of charges from £95 all inclusive.

Details from GMW, c/o OUTRIGHT, PO Box 4, West PDO, Nottingham, NG7 2DL or (0602) 780124.

# AROMATHERAPY

In an earlier article Reuven Britten outlined the history of Aromatherapy and the use of essential oils in massage. He continues with a look at some of the oils and their distinctive qualities.

Aromatherapy is a natural treatment using concentrated oils from plants, in baths, inhalation or massage. Enjoyable in themselves, the oils have antiseptic and healing properties too. Apart from lavender oil which can be used neat on the skin for insect bites, cuts and burns and to relieve tension, most oils are diluted when used in massage. Some of the most popular are clary sage, useful for asthma and throat infections; Sandalwood to relieve anxiety; and Ylang Ylang to balance both dry and oily skin. All three are also aphrodisiacs.



Eucalyptus is a common ingredient in many ancient and modern decongestants, but it is also combined with lemon and juniper for the relief of rheumatism. Most oils blend well with certain others but dilution is still required with a base oil such as sweet almond, walnut or hazelnut.

Self-massage is possible, but oils should never be used or mixed without first knowing their properties. Some can be harmful if used during pregnancy or by a person suffering from epilepsy, for instance.

Essential oils are more widely available now than ever before

and most stockists also sell guides to Aromatherapy, simple introductions to an art that has given pleasure and good health to people throughout the centuries.

If you would like more information about aromatherapy phone Reuven on 0602-532500.

## CHECK YOUR COUNCIL TAX!

The new council tax, which replaced the poll tax on 1st April, 1993, works in favour of lesbians and gay couples. A straight couple, whether married or not, is jointly liable for council tax on their home. If, for example, a property-holding woman refuses to pay the council, her husband or boyfriend will have to pay the lot. Council tax law treats a straight couple as married whether or not they actually are. But the law doesn't recognise gay couples. In the case of a gay couple living in a house rented or owned by just one of them, the law only requires that person to pay. But in the case of a joint mortgage or joint lease, both parties would be jointly liable.

## LAZY BREAKFAST

Fancy a leisurely Sunday cooked breakfast, Sunday papers galore, indoor and outdoor activities for young people, good vibes? Then look no further for the Croft Family Centre in Nottingham is the place to be. Whether you are gay, lesbian, bisexual or straight this is a welcoming space for you to be yourself. You don't have to hide there. And children will love it too, there's lots for them to do. Breakfasts run from 10am-2pm, so there's plenty of time to check your stars for the week, as well as more serious stuff if that's your bag. The Centre has a positive action policy, applying to all workers and users whatever their sexuality, sexual preference, race or whether they are physically challenged. See for yourself on 20th March or 24th April. Croft Family Centre, The Croft, Albert Road, Alexandra Park, Nottingham, NG3 4JD. Tel: 0602 620772 for more info.

## USE YOUR BUYING POWER



Buying from countries and companies with a commitment to social justice - Hiziki has the widest range of wholefoods, fresh bread, take-away snacks, organic fruit & veg, vegetarian convenience foods, and organic wine & beer in Nottingham. We also stock many natural remedies, cruelty-free toiletries & environment friendly cleaning products.

5% discount for UB40s, OAPs & students on Wed/Thurs.

Hiziki is a workers' co-operative

15 GOOSEGATE, HOCKLEY, NOTTINGHAM

FOR POSITIVE CHANGE



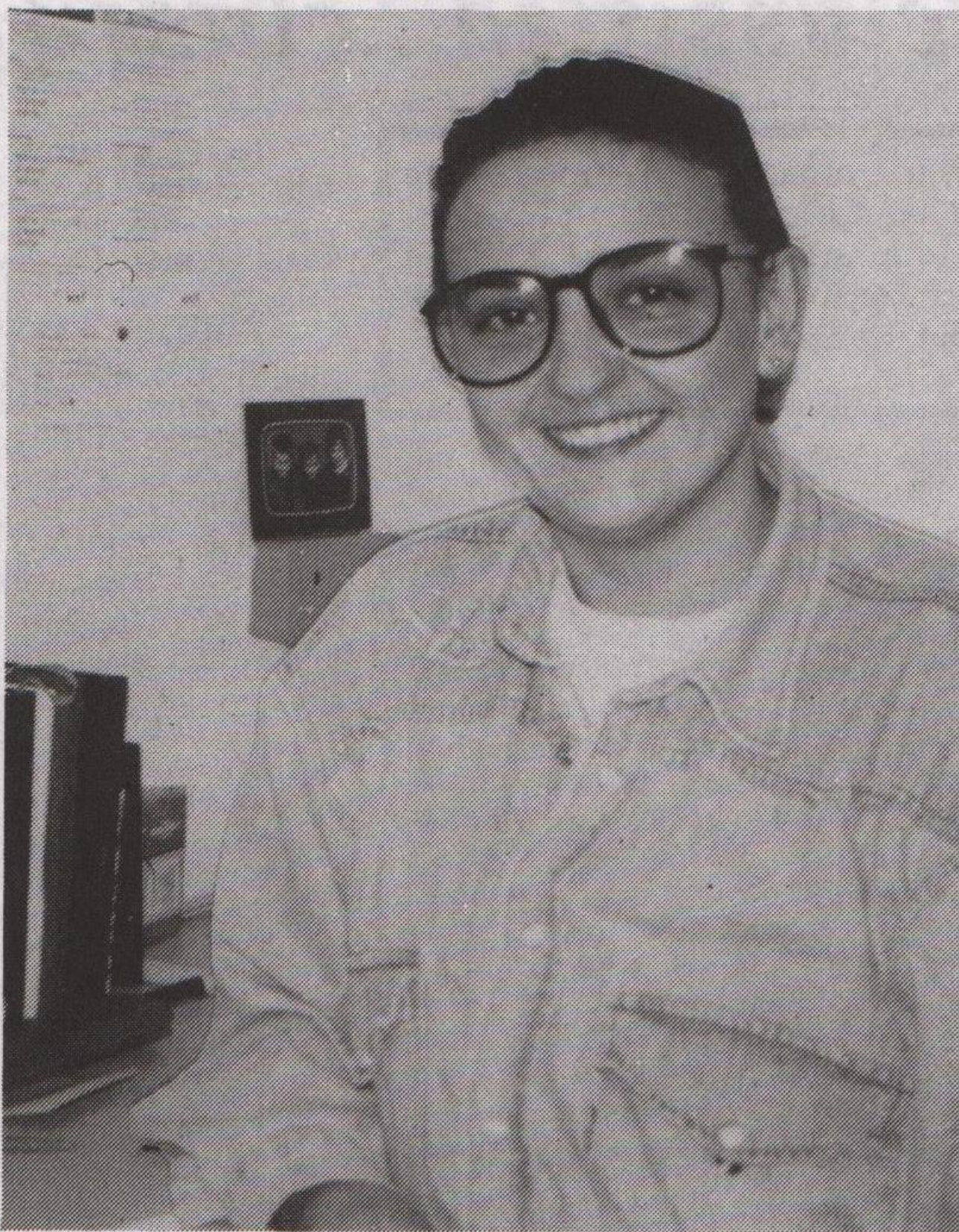
# GAY'S THE WORD!

Fifteen years in the travel industry have brought Siobhan O'Melia full circle. She started out as a booking clerk with a mainstream agency but now she is back booking again. Only this time she is working for very discerning, very demanding pink pounders - that's you and me - and what's more she owns the business as well!

"I've always felt it is morally wrong for gays to be ripped off by travel agents, gay or straight, who capitalise on the scarcity value of gay-safe complexes. With my experience and contacts built up over the years, I can make a living and still offer comparable holidays at much lower prices."

She works a punishing seven day week, but still manages to relax. And with three school age children it's a wonder she fits it all in. "It's a good job I'm a well-organised person otherwise I wouldn't get through the mound of work that I do. It also helps living nearby and having a supportive mum who helps with the childcare!"

"The advantages of being an out-lesbian travel agent are two-way: clients know they don't



have to hide their sexuality with me but equally not everyone is anxious to want others knowing who they are on holiday with, so confidentiality is essential." She has found that, although market research points to gay men having a higher disposable income than lesbians, women are also serious bookers with her company, Triangle Travel.

At this point the phone rang - and it's back to business again.

## FOREST TAVERN - TRIANGLES -

Due to ever increasing insurances, entertainment licences and the general demise, due to the 'recession?' it is with deep regret we are having to write this and inform you we have decided to - if you'll pardon the expression - "Go back to basics." We have no alternative and at least we will be able to continue to provide you all, with at least, a place to drink, eat and be merry!

So... as from the 5th April 1994 the club aspect will cease to operate: **NORMAL PUB HOURS** will continue **MONDAY - SUNDAY**. Obviously membership will not apply.

Our regular **Quiz Night** on **Wednesdays** will continue, along with the new format of a **Snowball Question**, also **Bingo** on **Thursdays**. There will be a **Disco Free Zone** after the 2nd April for a period of time to see how the changes take effect. We intend to provide from time to time "special" nights of music or entertainment during normal licensing hours.

By way of thanking the members that renewed last year we will be holding a **PARTY NIGHT** on the 2nd April, to include **FREE ADMISSION** with **BUFFET** and **DISCO** to members. A charge will be made for non-members/guests on the night. The bar will be open until 1.30am.

We are planning changes in the layout of the rear of the premises: a No Smoking lounge area which may be used for meetings will be available and the pool table will be moved to a larger room giving us opportunities for regular competitions or even regain a Team Spirit amongst some of you. A television area is also planned and Sky channels available together with the possibility of Film Nights being organised.

We would like to thank you the members for your support and hope that you and other regular customers will continue to support us.

Mary & Vicki Small

## INTERNATIONAL WOMEN'S DAY

At Nottingham Women's Centre on Tuesday, 8th March. Workshops (2-2.30) African Storytelling, Indian Dance, Paper-making, Creche 10-4pm, Indian Classical Dances & African Dance, performances. Play starting 8pm, £4.50/£1.50, food. For more info. contact Sukhi Shergill or Debbie Royle on (0602) 411475. All women welcome.

## LESBIAN LINE BENEFIT

Saturday, 5th March, Lesbian Line Disco 9pm-2am at the Women's Centre, Chaucer Street, Nottingham. Discos happen 1st Saturday monthly.

## BARRIE WARD & JULIAN GRIFFITHS

### SOLICITORS

5, Clarendon Street,  
Nottingham, NG1 5HS.  
Telephone (0602) 412622  
After hours (0602) 602324



## UNISON

### EAST MIDLANDS LESBIAN & GAY GROUP

Next Meeting, Tuesday 8th March  
7pm to 9pm at the  
The Leicester City Rooms,  
Hotel Street, Leicester  
(Near the market)

The meeting will be divided into  
two parts: beginning with the  
business and ending on a social note!

Further information from  
Karen (0602) 692317  
and Gary (0623) 811312



# classified...classified...classified...classified...

**HOW TO REPLY.** Seal each reply in a separate envelope. Write the number of the Box you are replying to in the top right hand corner of each envelope. Place them in a larger envelope. **Enclose two loose first class stamps for each reply.** Address the outer envelope to **Outright**, stamp and send to PO Box 4, West PDO, Nottingham, NG7 2DJ.

## MENS PERSONAL

**LEICS:** There's life Jim but not as we know it! Captain Kirk seeks first mate for friendship etc. Me: 25 S/A prof 'boy next door' type. You similar? Photo please. Box 120.

**PROFESSIONAL GUY,** 27, stocky, blond, non-scene, into squash, tennis, travel, pubs, seeks slim 21-30s for friendship and poss 1-1. Box 121.

**NOTT'M,** young good looking Black guy, straight acting, fit body, looking for friendship/relationship with a real man, under 30. ALA. Box 122.

**DERBY/NOTTS,** mature guy, needing to supplement income, seeks casual but regular work in house or garden. Box 123.

**YORKS/DERBYS/NOTTS.** Attractive straight acting white guy, 36, seeks slim Asian/Arab/Black guy 21-35 for friendship, maybe 1-1. Own place and car, gsoh, into videos, dance, travel. Photo? Box 124.

**NORTHANTS GUY,** 37, non-smoker, sense of humour, interests history, horticulture, music, arts. Non-camp. Seeks similar with view to friendship and poss relationship. Box 125.

**MALE WANTS rough treatment. Sincere. 47. Interests: jogging, playing drums, breaking motorbikes. Leicester masochist. Box 155.**

**MANSF'D/CHEST'D,** 25, blond hair, greeny blue eyes, looking for special person for 1-1. Like pubs, clubs, music, fed up being messed about. Can't travel. Can accomm. Get pen to paper. Box 126.

**NOTT'M,** gay guy, 21, slim, blonde hair, blue eyes, good looking, seeking young guys into fun, clubbing and good times. Photo? Hey! I'm waiting for you! ALA. Box 127.

**LEICS,** 25, 5'8", brown hair/eyes, seeks Asian/Black guy 21-40 for 1-1. Must be honest, caring, loyal, fun loving, genuine, committed. For long relationship. Must be straight acting. Box 128.

**WALSALL/SOUTH STAFFS** guy, 43, 5'10! medium build, dark brown hair, caring, romantic, into massage, healing, walking, videography. Seeks similar 30-50, n/s please. ALA with phone no. please. Box 129.

**SPRECHEN SIE DEUTSCH?** Friendly 35 year old seeks mature men who can! I want to improve both my written and spoken German. Correspond in both languages. Can you help? Box 130.

**NOTT'M,** gay couple: young & experienced black leather-clad pillions, seeks local leather-clad bikers for long rides and 'coffee'. Box 131.

**EAST MIDLANDS.** Tall, dark, executive, manly, discreet seeks slim active 25-35 for genuine friendship. Box 132.

## REPLYING TO AN AD?

Please read instructions, top of page 8. Replies without 2 first class stamps for each box number reply will not be forwarded.

**MANSFIELD/NOTTS,** 46, bearded male, seeks uncle types. Mild over knee games. Unshockable. Have car. Can travel. Looks unimportant. 55+. Suggestions welcomed. Very genuine. ALA. SAE photo if poss. Box 133.

**NOTT'M,** 24, reasonably good looking, straight acting, caring, sincere, sick of scene. Many interests, own home, fun loving. Seeks similar 21-35, to form mutually sharing friendship/poss 1-1. ALAWP. Box 134.

**MALE,** 27, looking for new friends. Straight acting. For nights in and out. Can accomm. Photo if poss. Age from 20-38. Box 135.

**EAST MIDLANDS,** Gay guy, 40s, Christian, attractive, genuine, loving, gsoh, many interests, seeks someone special to enjoy life with. ALA. Phone No. please. Box 136.

**NOTT'M/LEICS** gay male, 32, good personality, seeks guys 21-35 for friendship, maybe 1-1. Try me I could be the one for you. Phone no. if poss. Genuine replies only. Box 137.

**YOUNG GUY,** 5'7", slim build, average looks, likes theatre, cinema, music, travel and sports. Seeks genuine, sincere guy 21-27 to share life. No time wasters please. ALA. Box 138.

**PEYRONIES DISEASE** sufferer would like to meet similar or anyone with knowledge of the condition. Box 139

**NOTT'M,** attractive guy, 35, 6'4" tall, medium build, seeks friend any age for swimming, keep fit sessions etc. Let's get together and have some fun. ALA. Box 141.

**RUGGER/SPORTS MAN** into squash/weights outdoors seeks other young guys for locker room fun and fitness/friendship, Notts/Derbys. Students welcome. Photo please. Box 142.

**LEICS/ANYWHERE:** gay male 30, interests include: music, clubbing, walks etc. Seeking that special guy 21-30 for friendship and fun poss leading to 1-1 relationship. ALAWP. Box 143.

**LONELY** 42, average looking, seeking someone to help me smile again. Honest, reliable, gsoh. Varied interests. Frank letter. Fun loving. Poss 1-1. Are you that person? ALAWP. Box 144.

**NOTT'M/ANYWHERE.** 38 yrs. 5'11" tall, attractive, slim guy. Seeks attractive active gay/bi guys 25-40 hairy, who have firm right hand for over knee fun, also jocks, shorts, w/s, non-scene. Discreet. ALAWP. Box 145.

**NOTT'M,** 25, medium build, seeks loyal caring person for 1-1. Box 146.

**MY NAME IS SIMON,** looking for someone between 21-45 for 1-1 relationship, someone who has his own car and place, someone with gsoh. Box 147.

**NOTT'M GUY,** smooth, medium build, 5'8", naturist, photog, massage, seeks guys/bi's early 20-30s, 5'2"-6'4", smooth/hairy, any race/colour welcome. Photo/phone receives quick reply. Box 148.

**VERY DISCREET** 30s male seeks pen-pals, no-ties, live out your wildest fantasies by post. Also to exchange sweaty briefs etc. ALA. Guaranteed postal only. Box 149.

**LEICESTER MALE 30, extroverted introvert, humorous, caring, spiritual, socialist and socialite, likes good life and quiet times, seeks nearly similar up to 35. ALAWP. Box 161.**

**LONG HAIRE**d pierced guy, 28, seeks similar. Any area. Can accomm. Box 150.

**LEICS/ANYWHERE,** 30, sweet hearted soul, young, boyish looking, seeks truly romantic. I'm 5'6", smooth, sexy body, very smart guys 40+, suits, shirts, ties, underwear turn me on. Mature businessman. Box 151.

**SHEFFIELD/ANYWHERE,** white, slim, youthful gsoh guy, late 40s. I'm sincere, fit, discreet, into disco, swimming, hitch-hiking abroad. Can accomm. Wants similar 22-35 for genuine friendship. Write soon. Box 152.

**MANSFIELD AREA,** males under mid-thirties wanted for friendship (poss relationship) if photo included. Will set up gay group meeting if enough write. Box 153.

**LEICESTER.** Kind caring considerate guy looking for friends and poss relationship. Likes tv films, occasional drinking but not always gay scene. I am looking for guys 35+. ALAWP. Box 154.

**HOLIDAYS 1994.** Going away alone? Want some company? Derby guy, 36, might be interested. Guys 25-45 fairly adventurous + straight acting please write with phone no. Box 156.

**NOTT'M,** 27, non-smoker, straight acting, told good looking, into swimming, theatre, cinema, walking, seeks similar intelligent, honest guy 21-32 for friendship and poss relationship. ALA. Box 157.

**ARTISTICALLY** inclined slim 34, average height. OK looks, gregarious. Outward looking, happy natured. Seeks friendship/relationship with 24-32, active male for good times in/out. Leic/Leics. Box 158.

**FIT HEALTHY** 53, Gemini, into weight training, music and much more. Affectionate and friendly, seeks younger virile lover, 28-40, slim-medium-muscular for friendship/relationship. Leics/East Midlands. Box 159.

**NE LEICS,** 35, straight acting/looking, hairy, gsoh, non-smoker, 5'10" seeks similar 5'4" smooth guy for friendship, poss 1-1. Photo and phone no. please. Box 160.

**NOTT'M,** 37, seeks romantic, affectionate, intelligent, humorous, special guy to love. Could it be you? If you are 40-50 I



## HELPLINES

**BIRMINGHAM BLACK LESBIAN & GAY GROUP,** 021-622-7351 for details.

**COVENTRY FRIEND,** Mon, Wed, Fri, 7.30-9.30pm. 0203-714199.

**COVENTRY LESBIAN LINE,** Wed, 7-9.30pm. 0203-717166.

**COVENTRY MESMEN,** 0203-224090.

**DERBY BODY POSITIVE,** Tue 10.30am-1.30pm, Thur 11.30am-4pm, 0332-292129.

**DERBY FRIEND,** Wed, 7-9.45pm. 0332-49333.

**DERBY LESBIAN LINE,** Wed, 7-9pm. 0332-41411.

**DERBY AIDSLINE,** Mon-Fri, 7-9pm, & Thur, 2-4pm. 0800-622738.

**JEWISH LESBIAN & GAY HELPLINE,** Mon & Thur, 7-10pm. 071-706-3123.

**LEICESTER LESBIAN/GAYLINE,** Mon-Fri, 7.30-10.30pm. 0533-550667.

**LEICESTERSHIRE AIDS SUPPORT SERVICES,** Mon-Fri, 9.30am-5pm. 0533-559995.

**LINCOLNSHIRE AIDS VOLUNTARY GROUP,** Mon, Wed, Fri, 9am-9pm, & Tues, Thur, 9am-5.30pm. 0522-513999.

**LINCOLNSHIRE LESBIAN & GAY SWITCHBOARD,** Thur & Sun, 7-10pm. 0522-535553.

**NATIONAL BISEXUAL PHONELINE,** Tue & Wed, 7.30-9.30pm. 081-569-7500.

**NORTH STAFFS LESBIAN & GAY SWITCHBOARD,** Mon, Wed, Fri 8-10pm, Sun 1-3pm, 0782-266998.

**NORTHANTS GAYLINE,** Tue 6.30-9.30pm, 0604-39722.

**NORTHANTS LESBIAN LINE,** Tue 7-9.30pm, 0604-39723.

**NOTTINGHAM LESBIAN & GAY SWITCHBOARD,** Mon-Fri, 7-10pm. 0602-411454.

**NOTTINGHAM LESBIAN LINE,** Mon & Wed, 7-9pm. 0602-410652.

**NOTTINGHAM FRIEND,** Tue, 7-10pm, 0602-474717.

**NOTTINGHAM UNIVERSITY LESBIAN & GAYLINE,** termtime Mon, 8-10pm. 0602-514999, internal 4999.

**NOTTINGHAM GAY & LESBIAN YOUNG PEOPLE,** Thur, 7.30pm-10pm, 0602-417779. Other times answerphone.

**NOTTINGHAM AIDS INFO PROJECT,** Mon-Wed & Fri, 9.30am-1pm, 2-5pm, 0602-411989. Other times answerphone.

**SHEFFIELD AIDS LINE,** Mon-Thur, 7-10pm. 0800-844334.

**SHEFFIELD LESBIAN LINE,** Thur, 7-10pm, 0742-581238.

**SOUTH STAFFS FRIENDS,** Wed, 7.30-9.30pm, 0889-570095.

**WELLINGBOROUGH GAYLINE,** Thur, 6.30-9.30pm, 0933-223591.

**IN DISTRESS,** Lesbian & Gay Mental Health Group, 021-622-6589.

Simon, Nigel, John & Staff welcome you to  
**MARSDEN'S BAR**

13 Marsden Street, Chesterfield (0246) 232618  
Bar open Mon-Fri: 7-11pm, Sat 7-11pm, Sun 7-10.30pm

Sun 6 March - CABARET NIGHT - STEVE SMART stripper

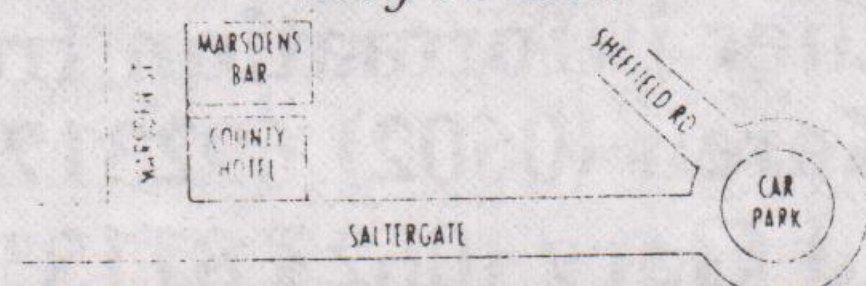
Sunday 13 March - MOTHER'S DAY GRAND DRAG BALL

Sunday 20 March - SISTERS SLIM - drag

Sunday 27 March - CHER TRAVESTIE - drag

Every Wednesday night - CAPTAIN GINGER - disco

Tuesdays nights - QUIZ NIGHT - up to £100 in prizes may be won





# classified...classified...classified...classified...

## OUTPOST!

You can have **OUTRIGHT** delivered to your door. Especially useful for keeping up with the classifieds from afar. Send a £5 cheque or postal order for 12 issues to **OUTRIGHT**, Box 4, West PDO, Nottingham, NG7 2DJ.

would like to hear from you. ALAWP. Box 162.

AQUARIUS MAN, 35, slim, tach, short hair, grey eyes, love's life, travel, seeks Libra man for 1-1 relationship, love, peace. ALAWP and phone. Box 163.

NOTT'M/ANYWHERE, warm, lively man, many interests (mid 40s), seeks friends (18-45) for cosy nights in and/or the great outdoors. Let me put a smile on your face. Photo apprec. Box 164.

## MIXED PERSONAL

YOUNG looking bisexual student, 23, Christian, new to area would like to meet singles/couples for friendship/ relationship, open to suggestions! Box 140.

## WOMENS PERSONAL

NOTT'M, gay female 30, easy going, honest, caring. Into music sport travel laughter. Seek friends, penpals, poss more for socialising fun, laughter, nights in and out. Box 433.

DERBYS, 49, wishes to meet reliable, honest females, married single or bi. Interests, reading, writing, womens studies, swimming. Non-smoker. ALA. Feminine and attractive but slight disabled. Box 434.

TIRED OF THE typical dykes on scene? Me too. Looking for someone feminine, honest, attractive, genuine? I'm 30, look younger, caring, loving. No butch dykes or bi's. Lincs. Box 435.

FEMININE LOOKING lesbian couple seeks other couples for friendships, outings. Any area. Box 436.

WANTED. Walking women. Interest in non-competitive walking (not too fast!) Interested in walking long distant paths in the summer. Box 437.

LESBIAN COUPLE aged 28/39, both mothers and are looking for penpals for support and advice. We could do with a few friends (only friends). We are non-scene. Please write. Box 438.

LEICS LESBIAN, young, who is in need of love, hugs and closeness, seeks young, boyish lesbian 17-25 for romance,

love and serious fun. Write soon. Photo if poss. Reply guar. Box 439.

LEICS female early 30s. Attractive, caring and romantic seeks similar for friendship/relationship. Photo if poss. Box 440.

COVENTRY AREA. Feminine, attractive, non-smoking, sensual, professional woman, 30s. Seeks older woman, 40-50, with similar qualities, for friendship and passion. Box 441.

NOTT'S WOMAN, 22, seeks mature woman for friendship, outings, view to relationship. Enjoys meals in/out, animals, sport, driving. Doesn't mind travelling. Enjoys holidays. Gsoh essential. Please reply soon. Non-smoker please. Box 442.

21 YEARS feminine lesbian student seeks friendships, penpals. Any area. Box 443.

DYNAMIC DYKE desperately seeking someone! Were you in Cello's on 12/2/94 wearing jeans and a waistcoat? I'm in love with you! Please, please reply. Box 444.

FUN LOVING lesbian is honest and reliable. Aged 46. Loves having a good time. Also likes cosy nights by the fire. Age unimportant. Photo if poss. ALA. Box 445.

E MIDLANDS, 31, feminine, non-scene, non-smoker, loving, caring, honest, gsoh. Interests walking, music, driving, eating out, looking for friendship poss relationship 30-45. No butch, bi's. Box 447.

ATTRACTIVE, loving, caring, Nott'm lesbian, sense of humour, non-smoker. Seeks 1-1 relationship. Music, theatre, walking, cinema, cosy sexy nights. Genuine replies only. No bi's. ALA. Age not important. Box 448.

EAST MIDLANDS, 34, feminine, non-scene, non-smoker, gsoh, loves outdoor life, cooking, driving. Looking for that lasting loving caring relationship, 30-40. No butch, bi's. Box 449.

EAST MIDLANDS, 43 yrs, non-scene, gardening, theatre, drinking, travel, bowling, cinema, cooking, seeks femme for lasting relationship. Non-smoker, any area. I want encounters that are dynamic, dirty and deviant. Box 450.

**DESPERATELY SEEKING female! 22-28. Young romantic fool 23, searching for similar. Caring, genuine, honest, gsoh, lonely. Do you need someone to love? Cherish? I do too!! ALAWP guarantees same. Lincs. Box 466.**

NOTT'M LESBIAN, young 43, caring, loving, genuine, honest, easy going, likes cinema, pubs, cosy evenings, varied types of music, smoker seeks 1-1 relationship. Genuine replies only. Box 451.

SINGLE GAY FEMALE, 20s, seeks new friends 18+ for fun, socialising and support, only kind caring sincere need apply. ALA. Leic area. Box 452.

NOTT'M, 40, feminine loving romantic caring gsoh. I like sport, cinema, eating out, music, travel. In need of tlc. Can you help? Don't delay, reply today for poss 1-1. Nott'm/Leics. Box 453.

WEST AUSTRALIAN DYKE desires absolutely fabulous blonde blue-eyed Notts hockey player. Get that sweet arse over here! Ok-bring the whole team too. These are open arms. Box 454. (NB on airmail paper please & enclose £1.00 stamps. Editor)

### COPY DATES:

No. 48: 25th March

No. 49: 22nd April

No. 50: 20th May

PUBLICATION DATES

1st Apr. 29th Apr. 27th May

## REPLYING TO AN AD?

Please read instructions, top of page 8. Replies without 2 first class stamps for each box number reply will not be forwarded.

## ACCOMMODATION

Advertise your accommodation wanted/offered using the classified ad form. Include your address/phone number. Your ad will appear once.

Accommodation files are also kept by Switchboards in Nott'm, Derby and Leicesters, and maybe elsewhere. See helpline panel on page 8.

DONCASTER, own rm in shared hse with one other male. Close town centre, rly stn. V clean, comfort accomm. Suit quiet, working, n/s. £165 pcm incl +phone. Box 680.

NOTT'M, flatshare, own rm, share facs with friendly male owner, 35. Working male/mature student/ret'd gent pref. Sneinton. £30 pw, share elec/phone. Mark 0602-413183.

LEICS. Rm in 2 bed flat, nice area nth of city. Parking, bus route, close shops. All mod cons. £120 pcm incl all bills. 0533-365020 eves/w'ends.

NOTT'M, rm to let in fgch, double glazed, hse in Lenton. £35 pw excl. Deposit req'd. 0602-787338.

CENTRAL NOTT'M, dble rm avail in comfy semi. £35 pw incl. Share hse and all mod cons with 3 gay guys. Julian/Russell/Paul 0602-869118.

FLATSHARE. Own room for male over 35. No DSS. Bulwell area near shops and buses. Smoker preferred who likes dogs. £35 pw plus gas. Phone John on 0602-761615/answerphone.

### ▼ Pink Ink

Lesbian and Gay Writing Group now meets, 7.45pm, every last Wednesday, 8 Eldon Chambers, off Wheelergate, Nottm. Or write to Pink Ink c/o Mushroom Bookshop, 10-12 Heathcote St, Nott'm, NG1 3AA.

**HOW TO PLACE AN AD.** Complete the form below. Write clearly please, and punctuate! Keep ads short and sweet: max 30 words. **OUTRIGHT** may refuse or amend ads. One free ad per issue. Enhance your ad in semi-display for £4.

## CLASSIFIED ADS

Complete and return to **Outright**, PO Box 4, West PDO, Nottingham, NG7 2DJ.


Mens ..... Womens ..... Mixed ..... Accom..... Semi-display..... (£4 cheque/PO)

Name.....

Address.....

..... Post code.....

## NOTICEBOARD

### ▼ Musical Comedy

Women only performances of **The Secret's Out** at Sheffield Library Theatre, Fri 18th and Sat 19th March. Written, performed, produced by Sheffield women. A benefit for Sheffield Asian Womens Refuge. Info and tickets 0742-422623.

### ▼ LAGWIE

2nd meeting of Lesbians & Gays in Education, Sat. 5th Mar. 2pm onwards, International Community Centre, 61b Mansfield Road, Nottingham.

### ▼ Walking Group

"Pink Pathfinders", a new walking group based in Beeston, Notts. All walks in the Peak District. All welcome. Next group meeting Sunday 6th March. Call Bob 0602-678134.

### ▼ Northants Events

Northants Lesbian Line present a visit to 'The Rocky Horror Show' at the Derngate on Thurs 24th March. More details phone Lesbian Line (see page 8.)

### ▼ Gay Outdoor Club

The East Midlands GOC; 20th March from Brinklow, approx 7 miles. Also cycle ride on Sun 6th March, approx 30 miles in South Leics and Welland Valley. More info from Nick on 0533-811138.

### ▼ Hykin' Dykes

Hykin' Dykes, 3rd Sun. of each month, March 20th, 9.15am, Contact Notts. Women's Centre.

### ▼ Climbing

Interested in climbing? Gay Outdoor Club meeting every first and third Tuesday evenings at The Foundry, Sheffield. Contact Philip (0943) 880241.

### ▼ Bi Womens Group

Notts. Bi Women's Group. meets 8pm, 3rd Tues. of each month at Nottm. Womens Centre, 30 Chaucer St. Nottingham.

## HYSON GREEN WHOLEFOODS

Mon-Sat 9.30-6  
(Thurs/Fri till late)

WE SELL  
ENVIRONMENTALLY SAFE  
& CRUELTY FREE CLEANERS  
AND TOILETRIES, A GOOD  
SELECTION OF HERBS &  
SPICES, FRESH BREAD AND  
A WIDE SELECTION OF  
SNACK FOODS.

ORDERS TAKEN

72 RADFORD ROAD  
Tel: 702056



## FAST FORWARD TO CONTROL

A gay-based video production company start shooting their first feature film, in May in and around Nottingham. It is the brainchild of Hayley Renwick and Gordon Watt (pictured), respectively writer/director and producer "and general whiplash wielder", she adds with a laugh. It has taken them longer than usual to get a production off the ground because it is self-financing. "It may take us longer at this stage but we want to keep control of what goes into the film", says Hayley. Both have done theatre and arts courses at Clarendon College and armed with their foundation year, were just itching to tackle the practical work, stepping out confidently into the media jungle.

Entitled, "Fragments", they describe it as a 'whodunit'. It follows the lives of John, a young gay man grieving for the recent loss of his long-term lover, and Kathy, a young woman unsure of her feelings towards her lesbian flatmate. Clues suggest that John's lover, Daniel, met with a more grisly end than previously thought, and the two friends are forced to investigate a conspiracy that could redress the balance of power between Nations. Between them, they must solve the mystery surrounding Daniel's death, and thwart the carefully laid plans of Mr. Dent, before the evil Mr. Jones finds them, and ensures they follow the same path as Daniel, and all others who cross him.

They now have sufficient actors and technicians, some with experience others raw recruits, and any profit from a future sale of their film will be distributed on a profit-sharing basis to those involved, "Once the debts have been paid off", they add. They aim to premiere "Fragments" in Nottingham. Anyone interested in more information can contact them on (0602) 858869 - 24 hours.



## OF MICE AND MEN by John Steinbeck

Lennie and George arrive at the ranch, pleased to find work as farmhands during the depths of the American Depression. What happens on the weekend of their arrival is the stuff of John Steinbeck's poignant drama, playing at Nottingham Playhouse until the 19th March. Joe McGann gives a moving performance as Lennie, a man whose understanding of what is going on is limited, but whose uncontrollable physical strength causes problems wherever he goes. Cared for and protected by his older friend George (Chris Ryan) Lennie tries hard to behave himself while the two work towards saving enough money to realise their dream, a farm of their own where Lennie will be able to tend the rabbits.

Their hopes for a better life and the tender affection of the two men for each other provide the only hope for humanity in a sadly brutal world, where poverty rules and the gun is the ultimate answer to problems.

Curley's wife (Emily Raymond), unloved and unhappy, seeks comfort in the company of the labourers, but her frequent visits to the bunkhouse are spurned by the men, afraid of the vicious Curley, son of the boss. When Lennie and she become close things go disastrously wrong. *Anthony Blane.*

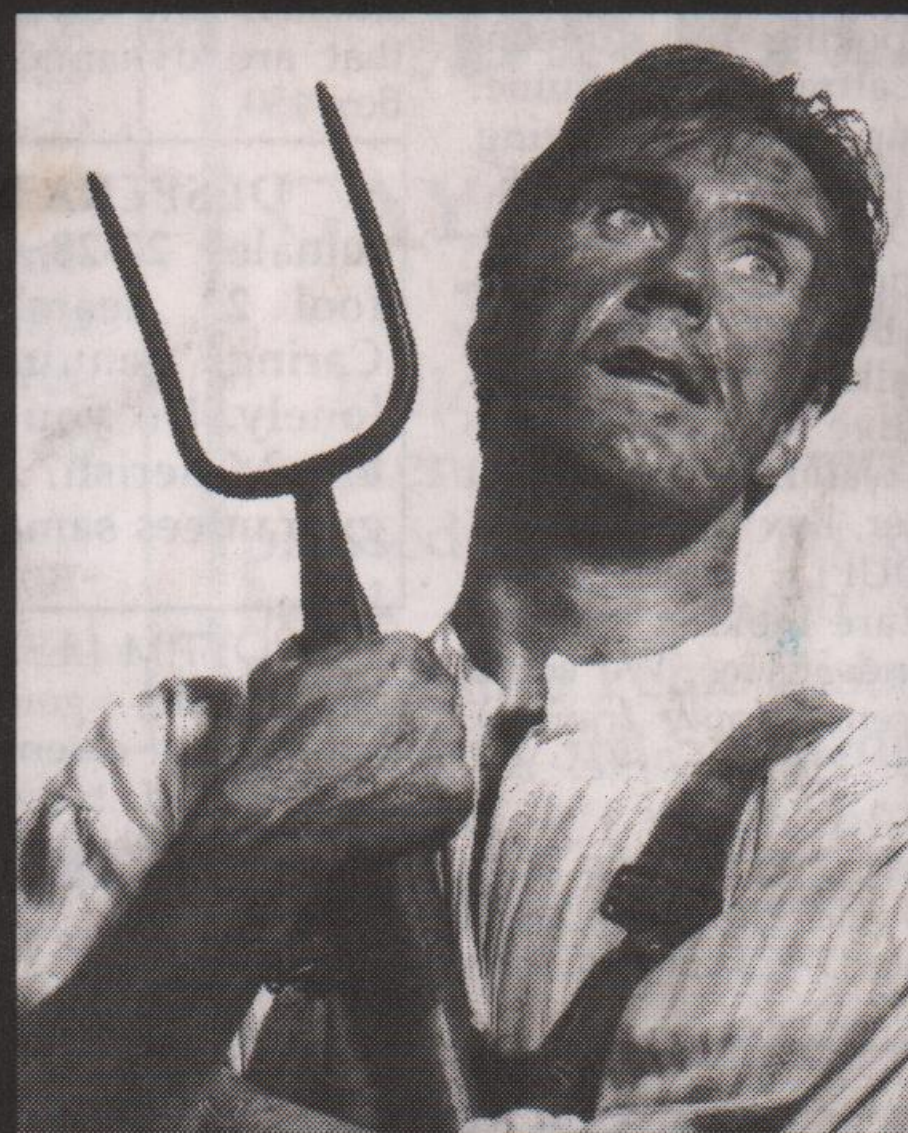
TRIANGLE  
TRAVEL

## THE COMPLETE GAY TRAVEL SERVICE

Inclusive package holidays \* flights \*  
Fly-Drive \* Cruises \* Accommodation  
\* skiing \* Midweek/Weekend Breaks  
\* Cities \* USA \* Canada \* Hawaii \*  
Caribbean \* Gay family resorts \*  
Gites \* villas with pools \* go-  
as-you-please \* Mardi Gras \* Sydney  
\* New Orleans \* Group discounts \*  
free gay resort guides \* 5,000+ resorts  
world-wide \* open 7 days a week

**0742 722990**

## Nottingham Playhouse



John Steinbeck's  
earthy and intensely moving drama

## Of Mice and Men

with Joe McGann and Christopher Ryan  
24 February - 19 March

BOX OFFICE (0602) 419419

Nottingham Theatre Trust Ltd is a registered charity