

May 1994
Issue 49

outright!

free!

for gays lesbians and bisexuals in central england

POLICE CRACKDOWN

A campaign aimed at stamping out homophobic violence in Leicestershire was launched from the Leicester Lesbian & Gay Resources Centre at 45 King Street, last month with the publication of a new leaflet encouraging lesbians and gay men to report all instances of harassment, abuse or assault. The Leicestershire Forum who produced the leaflet and back the campaign was set up over a year ago to promote free exchange of views between the local police and representatives of Leicestershire-based lesbian and gay groups, and has representatives from most of the lesbian, gay and bisexual groups in it, including the Parents Support Group.

The Project's aims are to gain information about violence committed against lesbians and gay men so that action can be taken against the attackers, to gain information about the extent of the problem, and convince people that the police will act on their behalf.

Chief Superintendent Michael Perry of Leicestershire Constabulary said: "There is a major problem in the police being able to convince members of minority groups that we take their special problems seriously and will treat them with sensitivity. The victims of homophobic violence frequently will not report abuse or assaults to the police because of their fears. We are seeking to provide a confidential means of receiving such reports, through an intermediary, so that some action can be taken."

Reports will be taken anonymously if the victim so chooses and by careful analysis the police will be able to identify trends and patterns of offending and take appropriate action as required without involving victims.

Andy Griffiths, a full time worker for The Mens' Sexual Health Project based at the Leicester Lesbian and Gay Community Resources Centre, and a member of the forum said: "We began distributing our leaflet describing the scheme a few weeks ago. Already I have received a lot of positive feedback on it. Many people are expressing surprise and pleasure at the direct involvement of the police in its production," he said.

Chief Superintendent Perry added: "Some years ago there was difficulty in getting victims of rape to come forward because of their fears about the way they might be treated by the police. We have addressed that with considerable success and are doing the same with victims of racial violence. I am seeking to establish a similar level of confidence with the lesbian and gay communities. This project is just one of the ways in which this will be done". People who have been the victims of assault may contact Andy on Leicester (0533) 541747.



Andy Griffiths

NOTTINGHAM'S LATEST LESBIAN DISCO

THE BOULEVARD HOTEL

Hartley Road, Radford
(0602) 787014

LESBIAN DISCO

*Boulevard Function Suite
From 8.30pm every Friday*

Women Bar Staff
* Bar 'till midnight *

£1.50 before 9pm, £2.00 after
All tickets on door

More info from Len Sexton, Boulevard
Hotel (0602) 787014

BADGERS NITE CLUB

GAY NITE
A Private Club
exclusive to Gay Members
on a Tuesday night

**OPENING OFFER
FREE MEMBERSHIP**

Doors open 9pm - 2am

Admission £2 before 11pm, £3 after 11pm

KINGS ARMS YARD, LINCOLN (0522) 525069

PYGMALION

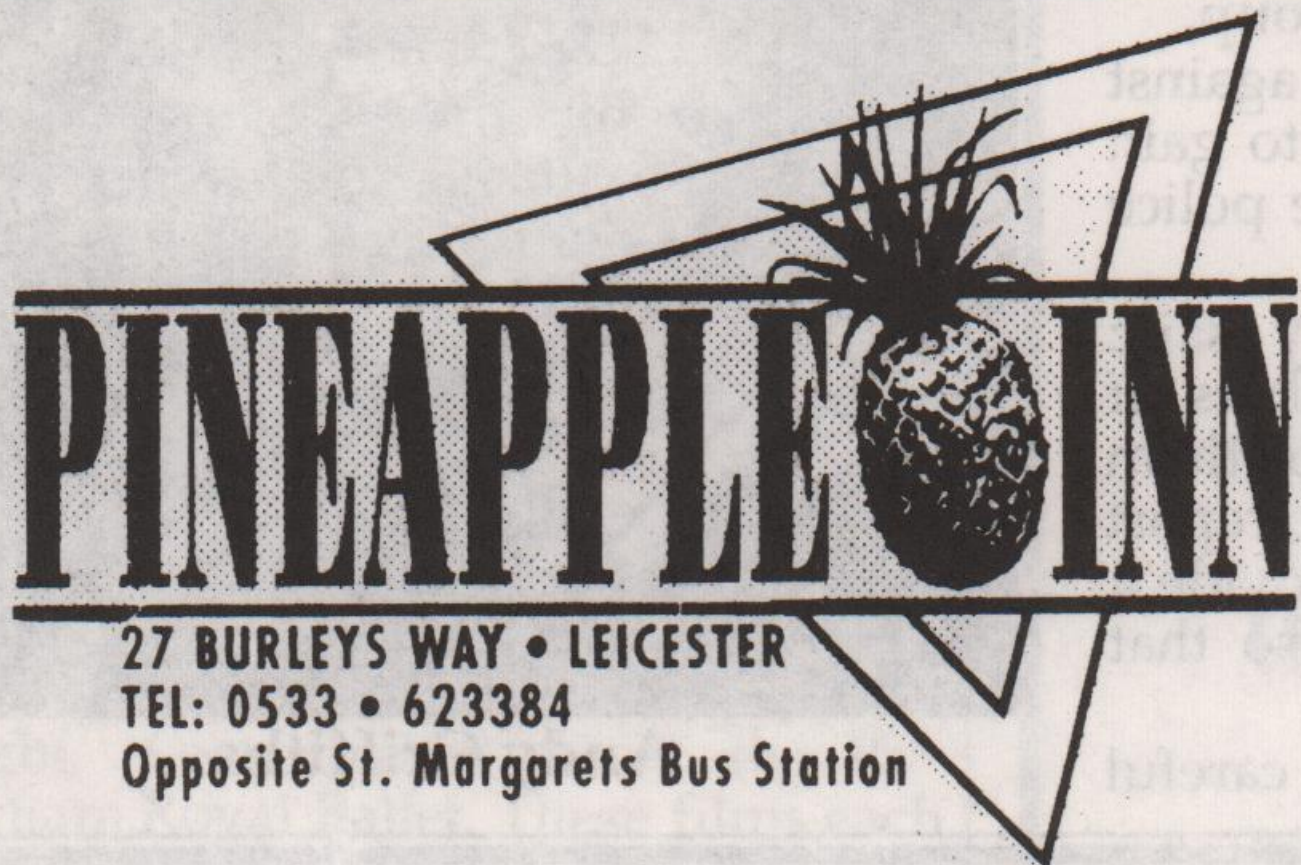
George Bernard Shaw's classic play came to Nottingham's Playhouse in April. For those who haven't seen it before, the play, which is easy to follow, is that of 'My Fair Lady' without the score and the soppy ending. This is much better, however, and much funnier and thus makes for a greater impact.

Josie Lawrence and Christopher Timothy were very credible as the winging Cockney flower girl and the tyrannical Professor Higgins respectively. The play does, moreover, make perceptive and acerbic comments on the moral and social attitudes of middle-class Edwardian England.

The stage made some alarming manoeuvres to distinguish between the scenes, which kept it all moving along without being hurried. In all this was a well cast production with attention to detail and with good performances from everyone, played for laughs without losing any of its impact.

Review by **Russell Lawrenson**

Nottingham Playhouse is celebrating its thirtieth birthday with a major development programme, including a new rehearsal and community space above the existing 'Limelight' bar opening in July. New foyer and auditorium services with better access for the disabled open in the autumn.



Sun 1st May - **BRAUN** - *Stripper*
 Fri 6th May - **KEVIN PETERS** - *Drag*
 Sun 8th May - **GENESIS** - *Stripper*
 Fri 13th May - **DAVID D** -
resident singer
 Sun 15th May - **THOR** - *Stripper*
 Mon 16th May - **QUIZ NIGHT** -
prizes

**Fri 20th May - ROCKY HORROR
 PARTY NIGHT
 with SASSY STRYKER**

Sun 22nd May - **L'HOMME** -
Stripper
 Fri 27th May - **Diamond Search**
 for a Star or Something -
amateur talent night
 Sun 29th May - **Stripper**
 Happy hours every day 7pm-8.30pm,
 seven days: £1 pint, lager & bitter, £2
 doubles, all the time.
 Sunday lunch £3.95 every Sunday

PINEAPPLE AID '94

Philip and Mark, the Landlords of Leicester's Pineapple Inn sponsored a charity drive for local HIV charities in March, kicking off mid afternoon with women's bands, Ruby Tuesday and Atomic Kandy which put the event into top gear. Other performers included Sugar Kane, Tom Boy, Tarts on Tour and resident Singer David Dabell. The evening was topped off with a charity auction which raised over £1200, bringing the Pineapple Aid fund to a total of £1600 and well on their way to raising the £2,800 needed to buy a bed for the Leicester Royal Infirmary's Infectious Diseases Ward. Said Mark "Philip and I would just like to thank all those people who helped and supported us to make the day possible".

NAIP CRISIS

Nottingham AIDS Project has virtually ceased to exist, though its befriending role and the Captain's Fund continue to function as normal. Both Sue Lakes and Chris Hinchley, full time workers at NAIP, have been made redundant. A new Befriending Scheme Co-ordinator is to be appointed but this is likely to be the full extent of Health Authority involvement. The NAIP building at Eldon Chambers no longer functions as a drop-in centre and the building will be vacated at the end of June, unless a last minute bid for renewed funding is successful.



Chris Hinchley

In a leaving statement Chris Hinchley, former Development and Outreach Worker, said "Many factors - a lot of them avoidable - have contributed to the Project's present situation. However, I firmly believe that had the Health authority - in particular Dr Richard Slack - taken a more pro-active and supportive role in the Project's development, then Nottingham's HIV voluntary sector would not be in the fragmented mess that it finds itself in now."

STONEWALL BREAKS

Take a residential break this year with gay and bisexual men in safe, secure surroundings.

3rd-5th June, Pre-Pride Weekend near Matlock Bath, Derbyshire We still have a few vacancies left, but be quick! We think they will go fast.

16th-18th September, the Lincolnshire Wolds. Definitely away from it all in splendid isolation amongst the rolling hills of the Wolds, cycling, walking, sightseeing or just lounging around.

23rd-28th December, West Wales-Pembrokeshire coast - Xmas!

Spend time together with up to forty gay and bisexual men in a beautiful, warm part of the country, 100 yards from the sea. Exclusive use of luxury hostel. Fully accessible for wheelchair users.

Sliding scale of charges, according to income. Send SAE for details to OUTRIGHT (Stonewall Breaks), PO Box 4, West PDO, Nottingham, NG7 2DJ.

GAY MEN TOGETHER

ART ON THE MOVE

Lesbian and Gay Artists could have a forum and a base for expressing their ideas and showing their work if the plans of an East Midlands artist come to fruition.

Nottingham-based Lesbian artist, Jacky King is spearheading a project which will offer lesbian and gay arts an equal showcase alongside other artists. She says, "At present lesbian and gay artists are discriminated against and oppressed on the grounds of their sexual orientation. Our project will seek to redress this inequality by positive action. Also any works which are deemed sexist, racist or generally oppressive will not be admitted."

'The Concept', described as a 'nationwide programme of Lesbian and Gay Arts' is currently based in Nottingham. "Our immediate priorities are to encourage progressive professionals to join a small committed specialist management team. We need people from all areas of the arts", said Jacky. So if you are interested in becoming involved Jacky King would like to hear from you. Write to her with a CV at Box 88, 15 Goosegate, Nottingham, NG1 1FE.



NOTICE BOARD

▽ 12 Years in Leather

East Mercia MSC hosts the European Confederation of Motor Cycle Clubs Bikerun from 3rd to 9th May. The club also meets 2nd and 4th Saturdays at Leicester Place, 24 Dryden Street.

▽ Leics Bisexual Group

A new group in Leicester, meeting on 3rd and 17th May at 45 King Street at 8.30pm.

▽ Workers in Education

Pink Chalk (East Midlands Lesbians, Gay Men & Bisexuals in Education) meet at the ICC, 61b Mansfield Road, Nottingham on Saturday 14th May at 2pm. More info from Anthony (0602) 585814.

▽ Gay Sweatshop

'In Yer Face' at the Leicester Phoenix from 11-12 May. Box office 0533-554 854.

▽ Leics Youth Group

Leicester Lesbian & Gay Youth Group meet every other Thursday at 7.30pm at 45 King Street.

▽ Bears Club

Bears meet monthly at 8.30pm on the second Friday of each month at The Service Bay, Stag & Pheasant, London Road, Nott'm.

▽ Nottingham Trent

Nott'm Trent Lesbian, Gay Bisexual Society meet 9th May (Pre-Pride), 16th May (Transsexuality), 23rd May (Info Night) at Conference Room, SU, Mondays at 8pm.

▽ Gestetner

Electric duplicator to give away. Phone 0602-780124.

YOUTH THEATRE IN SPOTLIGHT

Running over two weeks from May 23rd to June 4th is the Belgrade Youth Theatre's "2nd Young Directors festival". This event is regarded by many as the highlight of youth theatre in the Coventry Arts Alive Festival. Members of the youth theatre will direct their own productions, supported by professional directors from the Belgrade Theatre. Plays being performed include "The Maids" by Jean Genet, and "Manny & Jake" from the "Safe Sex" trilogy by Harvey Fierstein.

These performances will be complemented by discussions, exhibitions and an after show cabaret organised by Belgrade Youth Theatre with collaboration from the HIV Network's MESMEN and Youth Action projects. Tickets cost £3.00 (£2.00 conc) from the Belgrade Box Office on (0203) 553055.

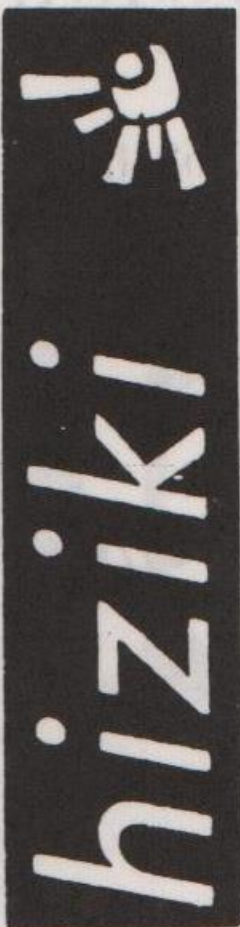
ANVIL PRESS

PRINT & DESIGN

A WORKERS CO-OPERATIVE

Tel: 0332 298213

USE YOUR BUYING POWER



Buying from countries and companies with a commitment to social justice - Hiziki has the widest range of wholefoods, fresh bread, take-away snacks, organic fruit & veg, vegetarian convenience foods, and organic wine & beer in Nottingham. We also stock many natural remedies, cruelty-free toiletries & environment friendly cleaning products.

5% discount for UB40s, OAPs & students on Wed/Thurs.

Hiziki is a workers' co-operative

15 GOOSEGATE, HOCKLEY
NOTTINGHAM

FOR POSITIVE CHANGE

CIRCLE DANCE

Forget about the gym - build your endurance by dancing with other men - all shapes and sizes. Nottingham Gay Men are leading the East Midlands into new ways for men to be with other men. Once a month at a local neighbourhood centre on a Sunday afternoon men dance, sing, and bring food to share. You don't have to be a disco dazzler to join in. So put those sweat pants to some community building use. The next two sessions take place on Sundays 22nd May and 26th June. Contact Richard 0602 780124.

LIFE IS *NOT* THE SAME IF YOU'RE GAY

The laws surrounding pensions make it difficult for unmarried couples to plan for retirement. When you are gay, it is not only the law that makes it difficult. It is the misconceptions surrounding intestacy and trusts. In other words, if you think you may ever want a partner to benefit from your pension plan in the event of your death you cannot leave it to chance.

Your independent financial adviser should not only inform you of the costs involved of any particular pension policy, but the size, strength and past performance of the pension office. Financial advice, however, does not stop there.

To us, getting it right seems surprisingly simple. We do not charge and our service is confidential.

GAY MONEY
STRAIGHT ADVICE
ivan massow associates

195 Wardour Street, London W1
Tel: 071-494-1848 Fax: 071-494-1849

LINCOLNSHIRE AIDS VOLUNTARY GROUP

Tel (0522) 513999

Mon, Wed, Fri 9am to 9pm
Tues, Thur 9am to 5.30pm
24 hour answerphone

For information, advice,
support, buddying,
safer sex etc

All calls confidential

Please call the above number
or visit us in Lincoln at
**THE HEALTH SHOP,
PORTLAND HOUSE,
3, PORTLAND STREET,
LINCOLN.**

SAMPLES by Simon Smalley

SWINGS & ROUNDABOUTS

Even as we speak, popkid faves Blur stomp their way to the top of the charts with their third elpee outing 'Parklife'. From the off, with the robotic intro of the single 'Boys & Girls', this hurtles along at a constantly exciting pace. A nice antidote to the continuing fad of all things American sounding, these four boys have again plundered the dusty volumes of 'Classic British Pop' and adding a bit of their own spit and polish, revealed a corker of an album.

So many influences, so little time! Everybody's in here and I'd kill to see their own LP stashes - from the obvious Cockney sparrer comparison with the Small Faces with a dash of XTC & 999 topped with an almost overdose of Mott The Hoople vocals, this teases and pleases but never fails to deliver the goods. Someone's got their head screwed right on, judging by the subtle innuendos which hark back to the golden age of rock & roll.

Standout tracks and would-be 45's amongst the stardust are the title track, which along with its Phil Daniels voice-over comes over like the title music to some dodgy 70's kid's series and the instantly catchy 'Tracy Jacks', which is the best track that XTC never wrote,



with the line "I'd like to stay here & be normal, but it's just so over-rated"! This is the sound of the suburbs!

PEARLS BEFORE SWINE

Along with Babs Dickhead, the abrasively-vocalled Elkie Brooks is the joint Queen of the middle-of-the-road drivel. However, having suddenly rediscovered her true calling of dem dere blues, Elkie has compiled an album of her fave blues standards and re-fashioned them in her own pedestrian style.

On the sleeve she does namecheck the real legends, i.e. Billie Holiday, Bessie Smith, Esther Philips, but to push it on the lines of 'The First lady of the blues'....I mean, come! Considering her versions of 'Bad Bad Whiskey' and 'Me & My Gin', it sounds like she's had a skinful of White Horse washed down with a bottle of Gordon's and staggered into the studio en route to throwing up. Honestly, I've heard more emotion in a dripping tap. File this colourless Radio 2 approximation of the blues next to Chris de Bluurgh. Next!



IT'S ONLY ROCK AND ROLL

After the accolade-winning 'Screamadelica' trip of a couple of years back, Primal Scream's follow up was high on the list of albums to eagerly await, the masses biding their time with bated breath, anticipating another dance-tastic adventure on the wheels of steel. Wrong! Movin' on up from being a substandard version of the MC5 until remix gods Weatherall, Patterson et al remixed them to fame and dancefloor acceptability, they've now dug deep into the past, using up and wearing out every pop style ever to hit this planet. "Give Out But Don't Give Up" should've been titled "Cop Out And Get The Cash", as Bobby Gillespie lazily sits back and spews out track upon track of not very clever rip-offs.

It's fine, if you're seventeen and never heard owt by Sly Stone, Parliament, The Faces and The Stones, but too much of it is been there, heard that, sold the album. At their shocking debacle at Rock City, when they kept punters waiting 'til 12.30 before appearing, they showed themselves up by being too stoned to hack it, which only goes hand in hand with this frighteningly sad exhibition of cheesy plagiarism. Give Out But Don't Give Up? More like Get Lost And Get A Life, Saddoes! The end.

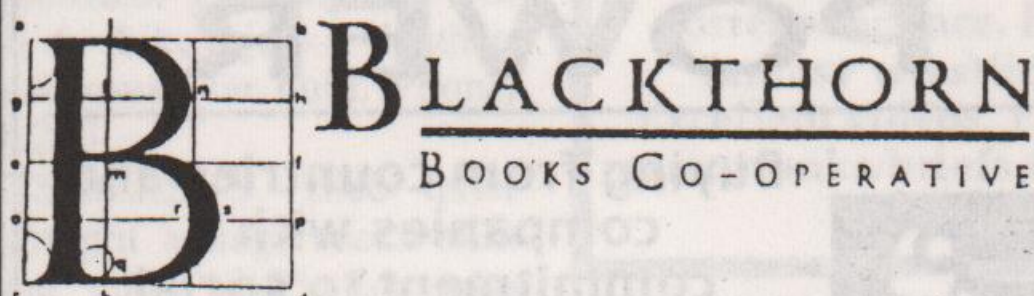
NOTTS MCC's BIRTHDAY

On Easter day members of Nottingham Metropolitan Community Church celebrated their 1st birthday. The church was set up following the blessing through MCC of two women Wendy Snell and Ann Le Page in 1992. The church has a special ministry to gays and lesbians and meets each Sunday at 11.30 am at All Saints Community Centre, Raleigh Street, Nottingham. There are also monthly socials.

Contact Wendy on 0602 750031 for details of other services provided.

CUBA SI!

Popular local band Wholesome Fish make a return appearance on Wednesday 8th June at the Filly & Firkin, Mansfield Road, Nottingham. The event is a benefit gig for the Cuba Solidarity Campaign and starts at 8pm. Late licence applied for. Entrance £4/£2 concs.



Leicester's Radical Bookshop

Lesbian & Gay holiday guides now in!

'SPARTACUS '94'

'THE INN PLACES'

'DETOURS LONDON'

70, High Street, Leicester
(0533) 621896

ALTERNATIVE ACCOMMODATION ON THE ALGARVE COAST

Sea view and scenery, excellent access and facilities in traditional Portuguese community. B&B £10.

Phone for more details

010 - 351 - 89 - 706925

DERBY AIDSLINE

Worried/confused about HIV/AIDS?

For confidential advice and information, phone FREE on Derby Aidsline

0800 - 622738

**Mon & Thur 7 - 9pm
Thurs 2 - 4pm**

THE HEALTH SHOP

12 Broad Street, Hockley, Nottingham, NG1.

Tel: 0602 475414

A free and confidential drop-in service for gay men, bisexuals and lesbians

free extra-strong condoms, K-Y, dental dams and gloves
HIV testing and counselling
Hepatitis B vaccination
Information, advice and support about safer sex, HIV and AIDS, sexual health and sexuality
Drug advice and needle exchange
Gay worker available

Open Monday - Friday 9.00am - 12.30pm & 1.30pm - 5.00pm

No appointments, no names, no problem

THE OUTDOOR LIFE

With the appearance of the sun and the blue skies, many a wardrobe has been turned over to find a pair of sturdy boots and a rucksack. Thermos flasks emerge from the back of the kitchen cupboard and lunch boxes are given an airing. Walking has a wide appeal and there are many gay and lesbian walking groups offering a leisurely stroll as well as a long distance trek. **Outright** contacted some to find out more.

The **Gay Outdoor Club** was formed in 1974 and has a national membership of around a thousand. Catering for all ages and levels of fitness, the GOC is based on a network of local groups which organise their own programmes of walks.

Transpennine GOC, we discovered, has a reputation for butchness. Perhaps it has something to do with the rugged terrain and the large area they cover, from Derbyshire Peaks to North Yorkshire moors. Their Sunday walks usually begin early at 10.30am and their Spring programme ranges from an evening walk near Matlock, to mountain bike rides and a camping weekend at Edale.

Walks organised by **East Midlands GOC** are traditionally held on the third Sunday of each month, from the peaks of Derbyshire to the arable plains of Northamptonshire, starting at 11am. There are also cycle rides and weekends away, and the group is currently organising its annual weekend camp near Stowe on the Wold in late June.

West Midlands GOC covers an area from the Welsh borders to Warwickshire and often teams up with other GOC groups for weekend camps.



Weekenders caters for the leisurely end of the market, with short walks and frequent stops en route. Most of their walks are in the Derbyshire Peaks, Yorkshire or Lincolnshire and they generally meet on the first Sunday of every month.

Pink Pathfinders are dedicated Peak District walkers, a 'fairly informal group, having good fun and enjoying the countryside'. Their walks are usually five to eight miles and they meet every three weeks. Whilst most GOC groups are mainly men, Pink Pathfinders is a mixed group ranging in ages from 21 to 60+.

Nottingham Hiking Dykes is a lesbian walking group which meets on the third Sunday of each month walking six to nine miles, usually in Derbyshire but also in Leicestershire and further north. And they have a weekend camp with campfire arranged for June.

There's also a **Sheffield Hiking Dykes**, and the **Ambling Dykes**
continued on page seven

STRYKERS

Gay SAUNA

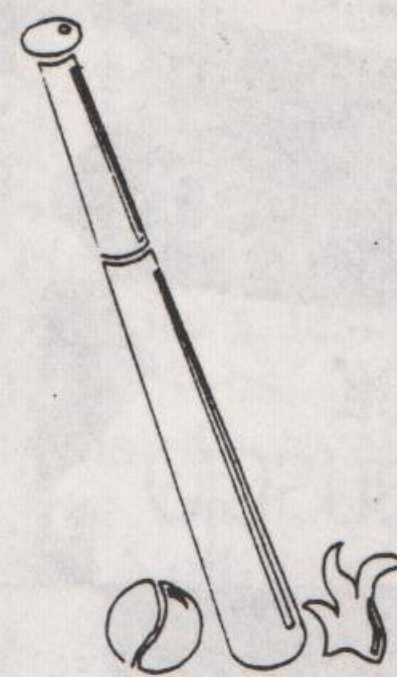
OPEN MONDAY - SUNDAY
12 NOON - 11PM

15 Carlton Road, Nottingham
Above HSS Hire Shop

MGM Night

Open all night until 0800

Entrance £5 - or £4 with this advert



THE MEN'S SEXUAL HEALTH PROJECT

45, King Street, Leicester

ALL OUR SERVICES ARE FREE AND
CONFIDENTIAL YOU DON'T EVEN HAVE TO
GIVE YOUR NAME

Available free to all men who have sex with men regardless of
age, sexuality, race, religion, disability, or antibody status.

TRADE

is a group of gay and bisexual men from a range of
backgrounds with one thing in common - we all want to do
something about the growing HIV epidemic.

TRADE is actively recruiting volunteers for its new training
intake. There'll be an informal get together on
FRIDAY 13th MAY at 45 KING STREET, LEICESTER
at 8pm, including refreshments.



If you would like to find out more about us, or are
interested in getting involved, why not come along.

We are particularly keen to recruit volunteers from Black
communities who are currently under-represented in our group.

For more information phone Andy:
0533 541747 (office hours)

FREE CONDOM DROP IN

Opening times

Every Thursday 11.30am-2.30pm

Every Friday 11.30am-2.30pm

Second Saturday each month 12.00am-3.00pm

(No appointment necessary)

If you have difficulties visiting during these times ring
0533-541747 for an appointment free.... (and easy)

ABSOLUTELY FREE!

*A choice of gay safe condoms *Water based lubricants *Dental dams, latex
gloves *Information, counselling and support on HIV/AIDS, sexuality,
relationships, HIV testing, safer sex or any concerns about sexual health
*Leaflets, safer sex videos, posters etc.

If you're into Leather, Rubber, Denim or Uniform why not



1982-1994
TWELVE YEARS OF
LEATHER IN
LEICESTER

Come along for a
Different Night Out
8.30pm to 11.00pm
2nd & 4th Saturdays
each month at
**LEICESTER
PLACE**

Door charge £2.00
(refundable*)

*refundable if leaving before 11.00pm



The NAMES Project (UK) AIDS MEMORIAL QUILT recently on display at Base 51, Nottingham and now on tour

OPEN FORUM

'Do Men Need to Change?' explores violence, identity and relationships, Black and Asian men, the sex industry and men's health.

On Saturday 21st May at the Multicultural Centre, Dairyhouse Road, Derby. Details from Jed (0773) 828973, or Paul (0332) 332093),

WANTED!

A gay men's mobile disco is wanted for a new Nottingham one nighter, possible becoming a regular event. If you have a disco service to offer, write to Outright at PO Box 4, West PDO, Nottingham NG7 2DJ.

PARK SPRINGS SURPRISE

Residents of the Park Springs estate in Gainsborough are to get their own residents association, and the trail-blazing association, set up as an action group to fight crime last year, has adopted a constitution which positively encourages lesbians and gay men to participate. "Membership" it states "shall be open to all residents regardless of gender, race, ethnic origin, disability, age, marital status, religious or political beliefs, HIV status, and to lesbians and gay men living on the estate".

4-D PROMOTIONS PRESENTS

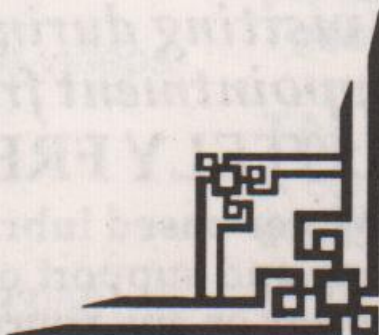
THE LAVENDER BALL 1994

The Social Event of the Year!

**Saturday
10th September
Colwick Hall
Nottingham**

Full Wheelchair Access
Non-Smoking Lounge
Women Only

For further information
Ticket details etc
Ring 0602 586142
(office hours)



'ON THE SCENE' in Burton-on-Trent BURNT GATE INN

Hopley Road, Anslow
Burton-on-Trent
Tel: (0283) 63664

Olga & Tony
welcome you on
Wednesdays, mixed
lesbian & gay night
from 7pm to 11.30pm
with a happy hour,
7pm-8pm.

Womens Coffee Bar
EVERY WEDNESDAY LUNCH-TIME FROM
12PM - 2PM 45 KING STREET
YUMMY FOOD AND GREAT COMPANY!
Lesbian & Gay Line - 0533 550667

THE OUTDOOR LIFE

continued from page five

for the less ambitious walker. And we've heard there's a Loughborough group too. A new quarterly, 'The Dyke' (£3.50 pa from 121b Huddleston Road, London N7 0EH) might be the answer if you want to hike with a dyke.

Walks in May and early June:

Sun 1 May: *Pink Pathfinders* walk from Tideswell, 7 miles, 10.45am.

Mon 2 May (Bank Hol): *Weekenders* walk from Wetton village car park, 8 miles, 10.45am.

Thur 12 May: *Transpennine GOC* walk from Ecclestone near Matlock, 7.30pm.

Sun 15 May: *Nott'm Hiking Dykes* meet 9.15am at Womens Centre and 10.15am at Lee. More details from Marian 0773-602534. *East Midlands GOC* walk from Foxton Locks, 11am.

Sun 22 May: *Pink Pathfinders* walk from Calver Bridge, 5.5 miles, 10.45am. *West Midlands GOC* have a River Severn walk via Hampton Loade, 10 miles, 11am. *Nott'm Hiking Dykes* meet 2pm at Womens Centre to plan future walks.

Mon 30 May (Bank Hol): *Weekenders* walk from Hassop car park, 8 miles, 10.45am.

Sun 5 June: *Weekenders* walk from Drakeholes, opp Griss Inn, 10.45am. *East Midlands GOC* cycle ride in S Notts and Soar Valley, 25 miles, 11am.

Sat 11 & Sun 12 June: *Nott'm Hiking Dykes* weekend camp. Details from Mo 0509-213894.

Sun 12 June: *Transpennine GOC* meet for Snake Pass walk, 13 miles, 10.30am. *Pink Pathfinders* walk in Wyedale, 6.5 miles, 10.45am.

For most walks you should wear suitable clothes and strong footwear, and for daytime walks bring a packed lunch. There are sometimes pub stops at lunchtime but practice varies according to the group and the route.

For a sample copy of the national GOC newsletter and details of membership send s.a.e to GOC Enquiries (Outright), PO Box 24, Minehead, Somerset TA24 8YZ.

For more details of events, starting points and local groups mentioned here contact:

Transpennine GOC: John 0532-737040.

East Midlands GOC: Nick 0533-811138.

West Midlands GOC: Gordon 021-420-2694.

Weekenders: c/o Outright 0602-780124.

Pink Pathfinders: Bob 0602-678134.

Nott'm Hiking Dykes: c/o Womens Centre

Sheffield Hiking Dykes: c/o Lesbian Line

0742-581238.

If you belong to a group we haven't mentioned, let us know and we'll publish the details in a future edition of Outright.

QUEER PEERS

Queer Peers are a group of gay men recruited and trained by the Sheffield Centre for HIV and Sexual Health and working in the commercial the gay scene. Queer Peers produce their own publicity, including modelling and photography. Their images have were ex-

Respect and protect yourself and your lovers



hibited in the city during World AIDS Week. Queer Peers can be contacted via the Sexual Health Outreach Team at 22, Collegiate Crescent, Sheffield, (0742) 678806.

LESBIAN HOSTEL - WEST OF IRELAND -

Surrounded by mountains and moorland
and overlooking Lough Allen.

Sliding scale from £6.50

Camping space available

Alix, Garvesk, Dowra, Co Cavan, EIRE

Tel: 010 - 353 - 78 - 43264

LOOKING FOR NEW FRIENDS?

Then Leicester Gay Group, a social and befriending group for all gay people, wants to hear from you.

Wide variety of social activities, with pub night at 'The Red Lion' in Leicester on 1st Sunday of every month, and meetings for 'newcomers' also held monthly in the centre of Leicester.

Interested?

Phone Roy on Leics
(0533) 765931, or
Chris on Loughborough
(0509) 415272.

THE GAI GUIDE

Nottingham's Health Shop has a new Outreach Worker for gay and bisexual men. Joining Simon Wright, recently appointed Project Worker, is Tim Franks, and one of their first initiatives has been to launch The GAI Project (Gay and Bisexual AIDS and Health Initiative) with a 'GAI Guide' to the city's lesbian, gay and bisexual groups, clubs, pubs and health services. The handy twelve page guide is available free from the Health Shop, Broad Street, Nottingham NG1 3AL, (0602) 475414.

OUT IN UNISON

The UNISON East Midlands Regional Lesbian & Gay Group are meeting on Saturday 14th May in Lincoln from 2pm to 4.30pm. This meeting is particularly important as the Group will decide on their representatives to send to the National Lesbian & Gay Committee, the Regional Committee and any other groups or sub-committees which they are involved with. The meeting is open to any UNISON member in the East Midlands who identifies as Lesbian or Gay, you don't need to be a steward or particularly active in your branch. This is about lesbian and gay members organising on our issues. If you need transport it's possible there will be lifts from main centres. Further info. from Gary Nash on Mansfield (0623) 811312 or Karen Waldram Nottingham (0602) 692317.

MONEY FOR WOMEN

FORGET THE MEN IN GREY SUITS

We are a long established firm of friendly, independent, financial advisors who are sympathetic to the unique requirements of women.

If you are interested in investing or borrowing money, buying a house or insuring anything - from your home to your health -

please phone 0602 - 617447 and ask for Sue or Kez (evenings & weekends 0602 - 521917)

Green & Ethical Investments

Special Rates for Women Drivers

Finance & Insurance For Women By Women



Your home is at risk if you do not



keep up repayments on a mortgage or another loan secured on it.

Beaver Associates are appointed representatives of Financial Options Limited.



BEAVER ASSOCIATES
(Nott'm) LTD

6 Meadow Road, Netherfield
Nottingham, NG4 2FF

"NOT BAD FOR A QUID"

HENRY NORMAL

(as seen on TV)

DAVE BELBIN

(as seen watching TV)

7.30, Friday, May 20th

at

Off Broadway
Carlton Street

presented by

Mushroom Bookshop

10-12 Heathcote Street

Nottingham

Tel: (0602) 582506

QUIM MAGAZINE

A review by Liz Millward

If the personal is still the political then no-one can accuse 'Quim' - a sex-positive glossy magazine 'for dykes of all persuasions' - of being anything but powerfully political. The bumper 95-page Issue 5 contains photographs, poems, short stories and the odd review, but its strength lies in the 'Quimquotes', comments by lesbians on different aspects of our sex lives including what makes a woman sexy; body size and image; being a black lesbian; having sex with men;



and sex work. These quotes illustrate the contradictions of our experiences and are presented without an editorial commentary to tell us what to think about them - which is disconcerting because they include issues many lesbians would prefer were not part of our community.

The big names are here: Della Grace, Pat Califia, Laurence Jaugey-Paget, Dixie Thomas and Lola Flash, along with a host of others, and the standard of contribution is refreshingly high. All six short stories are well written with thought provoking themes, although several are 'to be continued', which perhaps leaves rather too much to the imagination. The reviews focus mainly on material from the USA, perhaps reflecting their large

North American readership.

'Quim' is not representative and does not pretend to be, but the appearance of Black lesbians' views is a welcome addition. Previous issues of the magazine have tended towards an in-ye-face attitude and perhaps an over-emphasis on sadomasochistic sex at the expense of the many other areas of our lives. This one seems to have remembered that it is a magazine for and about women: "Maybe men need to make dead-lines to create a cycle they can depend on in their life. Women don't have to. WE HAVE PERIODS," rants editor Lulu Belliveau, setting the tone of angry affirmation of all types of lesbians' bodies and lesbians' sexualities.

'Quim' has never been a magazine for those who prefer lesbians to be neatly labelled and packed away in boxes. It is a magazine for those who like to have their ideas about lesbian sex and lesbian lifestyle challenged. And any lesbian who has discovered that none of the labels fit your experiences may find that this is the magazine for you.

KERNOW A'GAS DYNARGH

Welcome to Cornwall! The South West Lesbian & Gay Men's Community Newsletter has produced a Summer Guide to the Duchy, with 'friendly accommodation, clubs, pubs, places to visit, and much more, in an attractively designed format. Proceeds go to the Newsletter fund. £3 from 'Bi-Design' (ICT), PO Box 17, Camborne, Cornwall TR14 8XG.

"MAN FOR MEN"

Personal services for the discerning male.

Qualified mature masseur.

Relaxation/invigoration/sensuality

Body shaving - hair no. 1 and 2 crops

Fantasy & photography.

In/out visits - evenings/weekends

Brian M. 0773 833142

Andrew and Paul
welcome you to

THE KING'S HEAD

Emery Lane, Boston
0205 362926

BOSTON'S ONLY
GAY RUN PUB

BROADWAY

Broad Street, Nottingham, Box office: 0602 526611
THE 1994 LESBIAN & GAY FILM SEASON

GRIEF

Dir: Richard Glatzer/USA/1993/87 mins.

Behind the scenes of 'a tacky daytime soap, a wonderful gay comedy about a week in the life of its production team.

Friday 13th May, 6.00/11.00pm,
Saturday 14th, 8.15pm, Sunday 15th,
3.30pm, Wednesday 18th, 8.15pm.

GO FISH

Dir: Rose Troche/USA/1993/85 mins.

A special preview of the funniest and sexiest dyke feature yet: just a good old fashioned girl meets girl story.

Friday 13th May, 8.15pm.

BELLE

Dir: Irma Achten/Netherlands/
1992/99 mins.

Belle is a dreamlike evocation of childhood, first love and social pressures to conform and compromise.

Saturday, 14th May, 2.00/4.00/
6.00pm.

BEAUTIFUL DYKES AND LOVELY LEZZIES

A lively selection of nine short videos by and about lesbians

Sunday, 15th May, 6pm.

DREAM GIRLS

Dir: Kim Longinotto/UK/1993/50 mins.

The true story of the Japanese tradition of male impersonators, in which young women cross dress to the adulation of female fans.

+ SANDRA BERNHARD; CONFESSIONS OF A PRETTY LADY

Dir: Kris Clarke/UK/1993/50 mins.

The amazing Ms. B with footage of Sandra plus Scorsese and the loquacious Camille Paglia on what makes Sandra tick.

Sun 15th May, 8.30pm

MALE SHOTS

Eight Boys videos from the US, Canada and the UK ranging through lonelyhearts ads, cruising, and drag queens to an instructive video on ways to leave your lover..

Monday, 16th May, 6.15pm

SAPPHIC SHORTS

Some of the most innovative and challenging short films made by lesbians from around the world over the last few years.

Tuesday, 17th May, 6.15pm.

TALES OF THE CITIES 2

A compilation of gay shorts, including the new film from the director of Poison, Todd Haynes.

Wednesday, 18th May, 6.15pm.

THE ADMIRAL DUNCAN

Lower Parliament Street, Nottingham, 0602 502727

What's On in May

Sunday night cheap drinks and Stripper at 10.30pm

Every Wednesday at 10pm, Olga's Nasty
Bingo, including £50 jackpot at 11pm.

Abuse with prizes.

Thursday nights, £1 cans lager/bitter, £1.20 doubles
including draught mixer, free entry to disco.

Open to 1.30am every Thursday, Friday and
Saturday night

Every Friday cabaret at 12, stripper at 1am

Friday, May 20th - The fabulous
BETTY LEGS DIAMOND

SUNDAY STRIPPERS

8th May - DECCA

15th May - JIMMY MAC

22nd May - THE SCOUT

29th May - THE STAG

Trent MSC meet on 10th and 24th May, 8-11pm, strict dress code.
Guests of Bathley Guest House free entrance on all our nights.

FREEBIES GALORE!

On Saturday June 11th Notts. Les/Bi/Gay Youth coalition is running its second day of events for lesbian, gay and bisexual people under 26 in the East Midlands. This takes place at Base 51 (which is wheelchair accessible) and runs from 10am to 10pm. The day will feature a variety of workshops and discussions as well as many social activities. The day will be free of charge with free food (including vegetarian options). Creche and sign interpreter facilities will be available if Base 51 notified of requirements in advance. For more information please contact, Jon, Bek or Udi at the Information Shop For Young People on (0602) 585111 in the daytime or Nottingham Switchboard (0602) 411454 in the evenings.

A PHOENIX RISING

A new group for gays, lesbians and bisexuals has formed to serve South and Mid Staffordshire following the demise of the former South Staffs Friends social group. Meeting fortnightly, the new group hopes to find a friendly landlord or landlady willing to offer the use of a room for monthly pub meetings.

"We intend to keep holding some meetings in houses, to benefit those who for whatever reason are not comfortable in pubs, and also make it possible for parents of small children to attend meetings" said group member Helen. The group can be contacted at PO Box 362, Stafford, ST17 9GH or via North Staffs Switchboard (see helpline panel page 8).

SAFE SEX INSIDE?

From time to time we receive letters from prisoners, some of them serving sentences as a result of Britain's unequal age of consent laws. We're reprinting part of Mick's letter, with his permission, because it raises important questions about safer sex in prison.

Dear Outright.

As you can see, I'm still at Full Sutton. Mind you I'm being moved soon to Grendon Underwood for therapy to stop me fancying younger guys.

Which brings me to a topic I'm sure not only myself is naffed off about, and that's being gay in prison and NO precautions ie AIDS information, condoms etc. Are the authorities blind to the fact sex goes on in prison, and the dangers? What are we to do, turn celibate or something? A man like me has needs, but daren't because of such reasons, and to be honest at times it does my friggin head in. I've had two tests whilst I've been inside, both negative, but the worry's always there. It's OK for them. They (the screws) can go home to their wives, or boyfriends in some cases, and have their leg over while we are in here going slightly mad, dying to be fxxed but daren't. I don't suppose you could give me some advice on what to do?

Yours, Mick.

We asked a local AIDS Project for their reactions.....

Dear Outright.

I feel sure Mick's letter reflects the feelings of many held within the prison system. Sadly there is a discrepancy between what the Prison Service instructs its governors to carry out and what actually happens in practice. HIV awareness videos, trained HIV counsellors and multi-disciplinary teams to develop local initiatives should be available in every prison; however their presence is likely to vary from prison to prison.

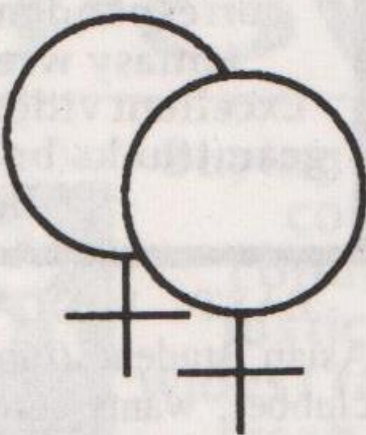
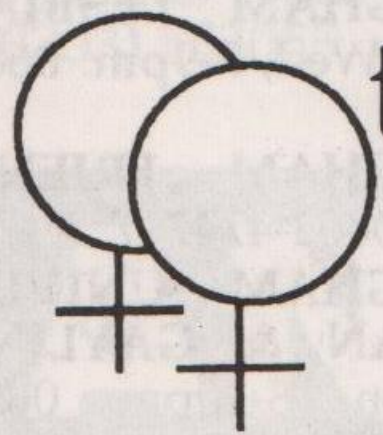
But what is the point of raising awareness amongst inmates if condoms and facilities for clean needles and syringes are unavailable! In October 1991 Home Office ministers had "not been convinced that making condoms available for men in prison would be appropriate or helpful". Their stance remains unaltered despite pressure from Health Authorities and voluntary organisations. Perhaps readers might contact their local MP since it appears to be a political issue.

Returning to Mick, it seems as if he already knows what he should be doing, ie practising safer sex, if he wants to stay healthy. Easier said than done!

Yours sincerely,

Clive Aylesbury, AIDS Liaison Officer, South Derbyshire Health Authority.

Would you like
more friends to meet?
more places to go?
more things to do?
then join.....



KENRIC

**The Nationwide Group
for Lesbians**

**Write for details:
c/o BM Kenric,
London WC1N 3XX.**

VACANCY VACANCY VACANCY VACANCY VACANCY VACANCY VACANCY VACANCY

Nottinghamshire Peoples Housing Association is a voluntary organisation providing temporary accommodation and support for single homeless people. We have a proven track record in good quality provision and innovative developments for homeless people.

Following the expansion and restructuring of the organisation we now wish to appoint a:

HOUSING SUPPORT MANAGER (full time)

Salary £15 903 p.a.

The post is available for job share (18.5 hours per week, split Monday to Wednesday and Wednesday to Friday)

This challenging new post will be responsible for NPHA's housing management and support services and will supervise a team of Housing Support Workers.

Applicants should have:

- Genuine and proven commitment to Equality of Opportunity and to meeting the needs of homeless people
- Experience of housing management and supervision of workers/volunteers
- A knowledge and understanding of homelessness and housing legislation and the welfare benefits system
- Good communication skills and experience of preparing and presenting reports and statistical information

NPHA is fully committed to the active promotion of Equal Opportunities as an employer and in the provision of services. We welcome applications from all sections of the community. Applications are particularly encouraged however from Black people, lesbians and gay men and people with disabilities, who are currently under-represented in management positions in the organisation. Unfortunately the office lacks wheelchair access.

Closing date for completed applications 5pm Monday 16 May 1994

Interviews will be held Monday 23 May 1994

For more details and an application form please contact NPHA at Kilbourn Street, off Huntingdon Street, NOTTINGHAM NG3 1BQ, telephone 0602 480483

classified...classified...classified...classified...

HOW TO REPLY. Seal each reply in a separate envelope. Write the number of the Box you are replying to in the top right hand corner of each envelope. Place them in a larger envelope. **Enclose two loose first class stamps for each reply: replies without stamps are not forwarded.** Address the outer envelope to **Outright**, stamp and post to: PO Box 4, West PDO, Nottingham NG7 2DJ.

MENS PERSONAL

PISCAN MALE, 26, slim, attractive, clean shaven, various interests, committed outlook, own home & car, seeks loving relationship. Photo please. Box 222.

GOOD LOOKING male, 28, lonely, sad, disillusioned, seeks warm, sensitive, gentle, honest, caring, sincere, handsome guy 18-30 to love and be loved by. Photo/phone apprec. Box 223.

NOTTS, slim, quite attractive, in mid 20's seeks a loving 1-1 with similar. Own home. Photo/phone apprec. Box 224.

NOTTS/SHEFFIELD. Good looking couple would like to meet singles 21-40 for regular visits and safe fun. Can accomm or travel. Photo and frank letter ensures reply. Box 225.

NOTT'M, 37, seeks romantic, affectionate, intelligent, special guy to love. Could it be you? If you are 40-50 I would like to hear from you. ALAWP. Box 226.

COVENTRY. Gay male, 30, sincere and genuine, straight acting. Likes music, cinema, clubs, nights in & out, seeks similar friend. Photo if poss. ALAWP. Box 227.

EAST MIDLANDS, 30, good looking, average height/build, hairy, seeks guys with wandering tongues and appreciative taste for no-strings fun. Photo/frank letter please. Discretion assured/expected. Box 228.

LINCS/EAST MIDS, 28 year old, looking for friendship and fun. There must be some genuine guys out there, where are you all? Write now with photo, guaranteed reply. Box 229.

LEICS INDIAN, 30, 5'8", athletic build, clean shaven, non-scene, seeks intelligent, straight acting guy under 35 for friendship poss leading to relationship. Passive pref. Photo apprec. ALA. Box 230.

COUNTRY GENT, sincere, loves the good things in life, rural pleasures, seeks honest soul-mate for real friendship and

hopefully 1-1. Foto/phone please. Box 231.

JOHN FROM NOTTS, 42, seeking friendship/relationship. Must have a car. Hobbies are railway models, airfix models, steam centre, 60s-70s music. Tel 0602-252988, pm only.

NORTH NOTTS, married, 49, non-smoker, non-scene, medium build, 5'6". Interests music, theatre, travel, gardening. Seeks younger active guy, similar height, to share interests and build a caring relationship. Box 233.

PROFESSIONAL MALE, 40, Leics area, seeks young guy 21-25 for real friendship. Must be tall, good looking, loyal, sincere, and discreet. Varied interests. Gsoh, straight acting. ALA. Box 234.

NOTT'M, 24, graduate, seeks similar for caring friendship poss relationship. I enjoy clubs, good food, having fun. Write now! Box 235.

LINCOLN AREA, 38 year old looking for 28+ for fun, friendship, poss relationship. Own home & car. Myself tattoos, cropped hair, likes music, cars, films etc. ALA with photo. Box 236.

NOTT'M, 27, smooth, lonely Londoner not interested in theatres, music, arts, clubbing etc. Just staying in bed with a nice guy all day. Genuine replies only. Box 237.

GAY SAGITTARIAN from South Lincs, 26, 5'10", blue eyes, fair hair, gsoh. Hoping to meet guy aged 18-35 for fun/friendship or 1-1, Lincs/Notts area. Photo if poss. Box 238.

NOTT'M/ANYWHERE. 29, slim, good looking, would like to meet attractive Asian guy for fun and good times, poss 1-1. Box 239.

SOUTH YORKS, male, 42, good personality, caring, sincere, gsoh, many interests, seeks special friend, 18+. Box 240.

NOTT'M gay male, 22-30 wanted by Birmingham guy 22, for friendship leading to loving lasting relationship. I love cinema, theatre, eating out. Does anyone else want this?!! Box 241.

DERBY/MANSFIELD/A38. 29 year old seeks casual liaisons with similarly healthy, slim young guys interested in swimming and keep-fit activities. Hunks would be a bonus. Box 242.

NOTT'M GUY, 36, tall, attractive, submissive, seeks dominant guy any age for fun, friendship, 1-1. Likes jocks, leather, rubber, have a nice muscular bum. Photo/ALA. Box 243.

YORKS/NOTTS/DERBYS, nice quiet white guy, 36, straight acting, seeks slim manly Black/Asian guy (18-35) for relationship. Own place/car. Into videos, cuddles, travel. Photo? Box 244.

NOTT'M, 38, attractive guy looking for regular training partner for weights, also likes swimming and squash. As well as socialising and friendship. Box 245.

MALE BISEXUAL divorced seeks partner under 40 for mutual pleasure and company. Unable to accomm but willing to travel. Based in Sheffield, lost and lonely. Please show me the way. Box 246.

LINCOLN, 39, 5'10", 13st., non-scene top seeks submissive types 21+. Also any boyz 21-40 for friendship and socialising or quiet nights in. Box 247.

NOTT'M, 29, intricate and mainly passive masculine man two years tight needs unclamping in body and mind by similarly strong philosopher. Demonstrate your tongues' cool glossary. Box 248.

NOTT'M GUY, 5'8", smooth, medium build, naturist, photog, massage, seeks guys/bi's/tv's early 20's-30's, 5'2"-6'4" smooth/hairy any race/colour welcome. Photo/phone. Box 249.

ATTRACTIVE sensual guy, 30: into brown, wants your well used briefs; absolutely any condition. Send with letter.

Friendship? Thanks. Box 250.

LEICS MALE, non-scene. Very caring seeks friends under 35 any race. Interests swimming, videos, coach trips, walking. I'm mid 40s. ALA. Photo apprec. Box 251.

SLIM GUY SHEFFIELD based (though can travel) late forties. Looking for affectionate friendship and fun with like minded guy. I'm reliable, mature and discreet. ALA. No Tories. Box 252.

NOTT'M GUY, 30s, slim tall goodlooking, gsoh. Seeks guys 21-35 for friendship, fun, poss 1-1. Must be genuine, honest, reliable. Tel/photo ensures reply. Can accomm. Box 253.

MEADOWS (Nott'm) aft. 10/4/94 nr. London Rd fill. stn., young/local pedal cyclists, young black leather-clad biker/blue machine, we nodded. Make contact for coffee/friendship. Box 254.

MIDLANDS, sincere 42, n/s, 5'9", good looking, enjoys travel, massage, country walks. Seeks partner. You too? Let's have a good summer together. Tel no. ALA. Box 255.

NOTT'M. Boyish 30's, 'straight acting'. Well adjusted, though sometimes irresponsible. Enjoys cinema, weights, music. Seeking slim, intelligent 21-32. Must like: talking, drinking, watching movies. Photo apprec. Box 256.

NOTTS, 22, looking for genuine friendship with local guy under 30, for trips to cinema, theatre, concerts, pub etc. Gsoh essential. ALAWP. Box 257.

NOTT'M guy, clean shaven, hairy chested, 45, seeks similar guys into jocks, leather, briefs, for indoor fun, your place, or just to correspond. Photo apprec. ALA. Box 258.

NOTT'M LAD, 33, hairy, w/e, straight looking/acting, looking for a similar bloke for fun, friendship and a pint. Prefer local lads 21-40. ALAWP. Box 259.

WEST MIDLANDS/ ANYWHERE

Forty four, lonely, romantic, caring, non-smoker, into 1-1, needs some fun in my life. Can accommodate. Passive/active. Get writing. Phone with letter please. Box 260

NINETEEN, tall, blond and handsome, extremely affectionate and inexperienced. Desires professional gentleman, 18-30, who isn't into casual sex and just wants a loving relationship. Photo apprec. Box 261.

WRESTLING! Good looking, friendly, fun loving guy, seeks wrestling fans, contacts, correspondence. Fun, friendly, fantasy wrestling sessions. Excellent videos. Photography in gear, trunks/briefs would be great. Box 262

EAST MIDLANDS: very attractive Asian student (model), 20, fun, friendly, clubber, wants serious 1-1 with gorgeous, genuine, honest guy under 26-any race (esp White), friends welcome. Box 263.

MANSFIELD AREA, males under mid-30's wanted for friendship (poss relationship if photo incl). Will set up gay group meeting (monthly) if enough reply. Box 264

PROFESSIONAL PERSON into Meissen, Monet & the Maldives. Slightly hedonistic, charismatic, articulate. 5'6", medium build & fit. Adventurous with gsoh. East/west Midlands. 35-40ish. Box 265

NOTT'M/MIDLANDS, 34, 6'4", short auburn hair, tache, seeks similar 25-40 for fun & friendship, hopefully 1-1 relationship. ALAWP. Box 266.

MALE, 26, straight acting/looking, intelligent, honest, seeks guy 18-30 for friendship, 1-1. Box 267.

SUBMISSIVE, genuine, adaptable, non-smoking houseboy/companion sought by schoolmaster (retired). Permanent if compatible. Beautiful home in Nott'm. Full details & photo please. Box 268.

GAY MALE, 25, 6' tall, eager to spend time with a trustworthy and affectionate

HELPLINES

BIRMINGHAM BLACK LESBIAN & GAY GROUP, 021-622-7351 for details.

COVENTRY FRIEND, Mon, Wed, Fri, 7.30-9.30pm. 0203-714199.

COVENTRY LESBIAN LINE, Wed, 7.30-9.30pm. 0203-717166.

COVENTRY MESMEN, 0203-224090.

DERBY BODY POSITIVE, Tue 10.30am-1.30pm, Thur 11.30am-4pm, 0332-292129.

DERBY FRIEND, Wed, 7-9.45pm. 0332-49333.

DERBY LESBIAN LINE, Wed, 7-9pm. 0332-41411.

DERBY AIDSLINE, Mon & Thur, 7-9pm, & Thur, 2-4pm. 0800-622738.

JEWISH LESBIAN & GAY HELPLINE, Mon & Thur, 7-10pm. 071-706-3123.

LEICESTER LESBIAN/GAYLINE, Mon-Fri, 7.30-10.30pm. 0533-550667.

LEICESTERSHIRE AIDS SUPPORT SERVICES, Mon-Fri, 9.30am-5pm. 0533-559995.

LINCOLNSHIRE AIDS VOLUNTARY GROUP, Mon, Wed, Fri, 9am-9pm, & Tues, Thur, 9am-5.30pm. 0522-513999.

LINCOLNSHIRE LESBIAN & GAY SWITCHBOARD, Thur & Sun, 7-10pm. 0522-535553.

NATIONAL BISEXUAL PHONELINE, Tue & Wed, 7.30-9.30pm. 081-569-7500.

NORTH STAFFS LESBIAN & GAY SWITCHBOARD, Mon, Wed, Fri 8-10pm, Sun 1-3pm, 0782-266998.

NORTHANTS GAYLINE, Tue 6.30-9.30pm, 0604-39722.

NORTHANTS LESBIAN LINE, Tue 7-9.30pm, 0604-39723.

NOTTINGHAM LESBIAN & GAY SWITCHBOARD, Mon-Fri, 7-10pm. 0602-411454.

NOTTINGHAM LESBIAN LINE, Mon & Wed, 7-9pm. 0602-410652.

NOTTINGHAM FRIEND, Tue, 7-10pm, 0602-474717.

NOTTINGHAM UNIVERSITY LESBIAN & GAYLINE, termtime Mon, 8-10pm. 0602-514999, internal 4999.

SHEFFIELD AIDS LINE, Mon-Thur, 7-10pm. 0800-844334.

SHEFFIELD LESBIAN LINE, Thur, 7-10pm, 0742-581238.

WELLINGBOROUGH GAYLINE, Thur, 6.30-9.30pm, 0933-223591.

IN DISTRESS, Lesbian & Gay Mental Health Group, 021-622-6589.

guy, 18-32, who would appreciate someone straight acting, genuine & discreet. Leics area. Box 269.

NOTT'M/EAST MIDLANDS, sports minded guy, 42, likes tennis, badminton etc. Interested in meeting others, also friends interested in mags, books, videos, all things gay. Box 270.

YOUNG GAY GUY, 22, seeks loyal caring loving relationship, someone I can take home to Mum. I'm tired of being hurt.

THE GAY & LESBIAN HUMANIST ASSOCIATION (GALHA)

An organisation for the non-religious promoting a rational Humanist approach to sexuality and gay/lesbian rights as human rights.

GALHA has: national/international membership, arranges meetings, socials and weekend events, publishes a quality magazine free to members, and provides officiants for non-religious ceremonies.

Leaflet and membership form from: GALHA (Ot), 34 Spring Lane, Kenilworth, Warks, CV8 2HB. (Tel/fax 0926 58450)

ARE THE PET SHOP BOYS SAFE WITH YOU?

Protect you and your collection with an expertly fitted burglar or combined fire/burglar alarm system.

For a free survey and competitive quote phone

"AMBER SYSTEMS"
0773 - 856206

classified...classified...classified...classified...

I'm old fashioned, romantic. Photo apprec. Box 271.

MELTON MOWBRAY GUY, 32, dark hair, clean shaven, non-camp, non-smoker, wonders if there's a sincere guy 25-40 Melton/Leicester area, who'd try for 1-1. Photo/phone apprec. Box 272.

OUT AND ABOUT but with out a mount. Just turned 21, 6'2", slim build, seeks over protective guy who's not scared of having fun. ALAWP. Box 273.

NOTT'M, 20, White, honest, caring, straight acting, seeks young Asian guy, friendship & fun, perhaps 1-1. N/s. If you enjoy nights in/out contact me now. Box 276

NOTT'M CITY CENTRE. Muscular, short, easy going, warm and gsoh. Seeks males 18-35 for days and nights by the tv being massaged and pampered. Genuine replies only. ALA. Box 277.

NOTT'M/MIDLANDS. 37, tall, bald-No 1, dark, medium build. Seeks possibly hairy, fir, guys into sm, bd, etc. Nothing heavy. Give and/or take. Frank letter. Photo helps. ALA. Box 278.

NOTT'M/DERBY/LEICS/ANYWHERE, 34, non-scene, slim, average looks, 5'7", seeking friends 1-1. Go on try me, get writing. Box 279.

GOOD LOOKING, intelligent, fit, manly 24 year old, 6', dark hair/eyes. Looking for something special. Similar? Photo please. P.S. I am not as arrogant as I sound! Box 281.

OUTPOST!

You can have OUTRIGHT delivered by first class post in a plain sealed envelope. Especially useful for keeping up with the classifieds. Send £5 cheque/postal order for 12 issues to OUTRIGHT, Box 4, West PDO, Nottingham, NG7 2DJ.

MIXED PERSONAL

YOUNG LOOKING 42 would like to be a sperm donor (no charge). Fair hair, blue eyes. Discretion if wanted. Box 274.

BI GUY (38) offers free sperm donations to lesbian couples. Clean, safe, with no after commitment. Both partners serviced if req'd. Genuine ad. Hopes for genuine replies. Photo apprec. All Welcome. Box 275.

FEMALE seeks gay male/couple would-be father(s) prepared to offer accomm and friendship in return for a child and child-care. Any area considered. Box 506.

EXPERIENCED personal and care assistant, housekeeper, driver seeks employment. Box 280.

HYSON GREEN WHOLEFOODS

Mon-Sat 9.30-6
(Thurs/Fri till late)

WE SELL
ENVIRONMENTALLY SAFE
& CRUELTY FREE
CLEANERS AND
TOILETRIES, A GOOD
SELECTION OF HERBS &
SPICES, FRESH BREAD AND
A WIDE SELECTION OF
SNACK FOODS.
ORDERS TAKEN

72 RADFORD ROAD
NOTTINGHAM 0602 702056

WOMENS PERSONAL

ATTRACTIVE LESBIAN 26, n/s, needs spoiling, pampering etc. Into Indie, intelligence and honesty. Wicked sense of humour and lips to die for. ALA. Box 482.

DERBY LESBIAN, 36, slim attractive seeks feminine woman 25-40 for special relationship. Come and put some love back into my life. Box 483.

GAY FEMALE, varied interests, non-scene, gsoh, seeks similar feminine female to share fun, friendship, relationship. Box 484.

MANSFIELD WOMAN, 22, seeks non-smoking lesbian(s) for friendship, poss relationship 1-1. Interests although being career minded include eating, drinking (in/out), animals, walking. Lots of cuddles/kisses. Photo apprec. ALA. Box 485.

LONELY LESBIAN, sexual abuse survivor. In healing. Seeks supportive friends to spend time with. Likes music, cinema, meals out. Gsoh, non-scene. Notts or any area. Box 486.

A BORED gay female seeks other bored lesbians for friendship, poss more. Box 487.

EST MIDLANDS, attractive gay girl, early 20s looking to meet new friends/relationship. Enjoys going out and having cosy nights in. Genuine replies only please. Non-smoker. Box 488.

LISA (JOEY). Oranges are not the only fruit. Do you fancy coming scrumping with me to discover the apples? The pears look quite tasty too! Love Hadley. Box 489.

NOTTS LOST LESBIAN needs direction, 35, gsoh. If your interested in redirecting me with long walks, music, and good food, then write. Seeks fem 32+ (smoker). Box 490.

LEICS WOMAN, mid 30s, attractive, caring, romantic, non-scene, gsoh, independent. Loves music, walking, food. Seeks similar for loving relationship. Box 491.

NOTT'M GAY FEMALE, 23, likes bowling, cinema, sports and music. Seeks new friends 20-35 for friendship and poss 1-1. Only kind caring sincere need apply. Photo if poss. ALA. Box 492.

CUDDLY & LOVABLE female, 22, seeks romantic liaisons with same for poss 1-1. Age unimportant. Prefer non-smoker. Genuine replies only. ALA. Box 493.

LESBIAN, 45, enjoys good company, eating out, driving, nights out, nights in. Looking for someone honest and genuine for friendship, poss close encounter. No bi's thank you. Box 494.

SINCERE, gsoh, lots of tlc to give. Theatre, music, cinema, cosy nights. Seeks 1-1. Non-smoker. No bi's. ALA. Genuine replies. Box 495.

BISEXUAL LADY (28) would like correspondence/meeting with female (poss male tv) into s/m fun. Detailed letter and photo apprec. Box 496.

BARRIE
WARD
&
JULIAN
GRIFFITHS

SOLICITORS

5, Clarendon Street,
Nottingham, NG1 5HS.
Telephone (0602) 412622
After hours (0602) 602324

HADLEY: you slay me. Meet you in paradise. Bronwyn. Box 497.

NOTTS, cute gay female, 20, new to scene, seeks feminine woman for friendship, poss relationship. Must be caring and have gsoh. Photo essential. Box 498.

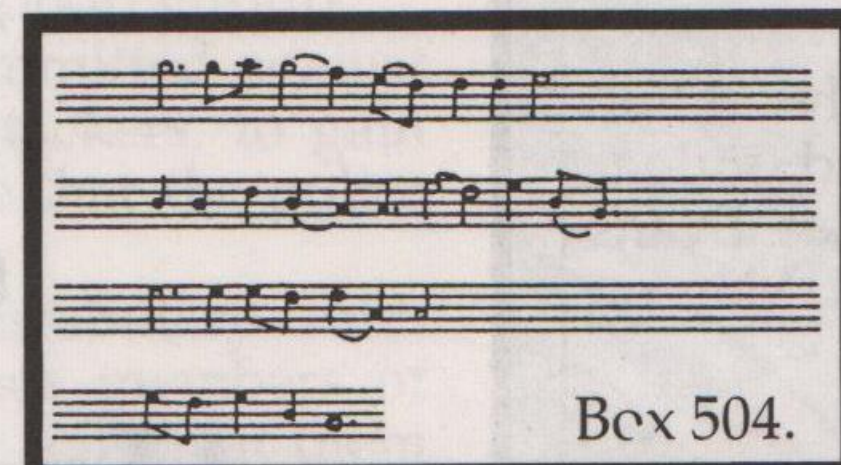
SPIRITUAL NEW AGE personal growth vegan lesbian into the planet, books, music, seeks friends/penfriends. Box 499.

LINCS, 26, feminine, lonely, seeks new friends for fun and laughter. Possible 1-1 relationship. Must have gsoh. Box 500.

NOTT'M. Nearly 40! Sick of the scene. Enjoys walking, cinema, music-anything within reason! Anyone else out there with problems filling in their Sundays. Uncomplicated friendship wanted. Box 501.

EAST MIDLANDS LESBIAN, attractive, mid-30's, looking for feminine partner for fun and passionate nights, 25-40. No butch or bi's. Box 502.

LEICS/NOTTS/DERBY AREA. Attractive, amusing, professional woman still available. Enjoys most pleasures in life. Seeks similar with gsoh and stamina. Must be genuine. Wanting relationship. ALA. Box 503.



STILL SEARCHING FOR 1-1. Various music, sports, pool, pubs, cinema, driver, non-smoker, professional, cosy nights in/out. Photo. 30/43. Genuine, caring, honest, romantic, gsoh. Lonely, any area. Box 505.

LESBIAN STUDENT, 20, feminine, little experience, seeks lesbian, 20-35 for fun, friendship maybe romance. Discretion expected and assured. All letters answered. Based in Stafford, can travel. Box 507.

ARE YOU INTERESTED in joining a female group for married and bi women? If so please write so we can get something going. ALA. Any age. Box 508.

REPLYING TO AN AD?

Don't forget two 1st class stamps for each reply. See top of page 8.

HOW TO PLACE AN AD. Complete the form below. Write clearly please, and punctuate! Keep ads short and sweet: max 27 words. OUTRIGHT may refuse or amend ads. One free ad per issue. Enhance your ad in display for £4.

CLASSIFIED ADS

Complete and return to Outright,
PO Box 4, West PDO, Nottingham, NG7 2DJ.

Mens ... Womens ... Mixed ... Accom ... Display (£4 cheque/PO)

Name.....

Address.....

Post code.....

ACCOMMODATION

Advertise your accommodation wanted/offered using the classified ad form. Include your address/phone number. Your ad will appear once.

Accommodation files are also kept by Switchboards in Nott'm, Derby and Leicester, and maybe elsewhere. See helpline panel on page 8.

MANSFIELD AREA. Room to let in gay hh, share with two single gay lads. All mod cons.. Rent negot. Glenn 0623-825016.

FANCY SHARING a home with 3 other gay men? Derby city centre close to Rubys. Students & unempl welcome. 0332-203194.

NOTT'M dble rm to let. Share lux hse. All mod cons inc shower, tv etc. Must be working or student. £45 pw all incl. Colin 0602-585075.

NOTT'M. Share lux hse, own rm, sat tv, ansaphone, w/machine, dishwasher, with young guy. Male £45 pw. No bills. Deposit req'd. Neg. 0602-290021.

WAKEFIELD. Lodger wanted. n/s male/female to share hse with owner; all mod cons, lge gdn, close M1. £35 pw + bills. 0924-384415.

DERBY, needed for Sept accomm and p/t job for mature (fit & forty(student at Univ. Prefer self cont flat, cheap, city centre. Serious replies only please. Box 697.

GAY HOUSE-2 rooms to let. ch, phone, micr, all mod cons. Non-smokers only. Northants town centre. Steve/Jenny 0604-26383.

STAFFORD: furn room to let, Rising Brook area. £35pw inc bills. n/s pref. Students unempl welcome. 0785-213259.

COPY DATES

No. 50: 20th May

No. 51: 24th June

No. 52: 22nd July

PUBLICATION DATES

28th May, 2nd July, 30th July

cut here

cut here

ON THE BOX

DUSTY: FULL CIRCLE:

Dusty reflects on her music and the sounds which influenced her in *This Is Dusty* on BBC1 in May. French & Saunders, The Pet Shop Boys, Martha Reeves and Dionne Warwick also contribute, and there is vintage film of Dusty singing some of her most famous numbers. Bank Holiday Monday, May 2nd. BBC1 at 11.05pm.

A SKIRT THROUGH HISTORY:

In the first of a six-part series on unorthodox women's lives, 'A Marriage' tells the story of Anne Lister of Halifax and her love for another woman, kept secret for a century until the code she had used for her diaries was finally broken. Friday 6th May. BBC2 at 9.30pm.

KIDS IN THE HALL:

The camp comedy troupe from Canada continue their new series. Half hour a week on Wednesday nights.

VIVA CABARET:

Lily Savage returns to the 'Club Viva' with an outrageous and vulgar cast of comedians including Lee Evans and Eartha Kitt, from the 20th May on Channel 4.

MENS ROOMS:

Five ten minute films on places where women are excluded, including *The Urinal of illicit liaisons*, and *The Dressing Room* where men, gay and straight, preen themselves at the Birmingham Royal Ballet. These films each follow one of a series of *Men Only* in which women directors and authors examine men and their obsessions and characteristics. Mondays from 23rd May.

LESBIANS BOULEVARD

The Boulevard Hotel in Radford was packed to capacity for its first regular Friday night lesbian disco last month. Held in the smart function suite, the lively crowd danced the evening away to Spinstas Sounds. Said Manager, Len Sexton "I couldn't have hoped for a more successful first night and I look forward to continuing success every Friday night".

DERBYSHIRE BODY POSITIVE

*for friends, carers, partners
who are HIV+*

Please contact PO Box 124,
DERBY DE1 9NZ or phone us

Tuesdays:

10.30am - 1.30pm

Thursdays:

11.30am - 4pm

0332 - 292129

PRIDE '94 WILL SOON BE HERE!



Buses depart from Nottingham at 8.30am on Saturday 19th June. Tickets from Mushroom Bookshop, Heathcote St, £9/8 (concs). £1 off both prices before 5th June. What arrangements are there for buses from other towns? Let us know and we'll publish them in the June edition of Outright.

Shelter

NOTTINGHAMSHIRE HOMELESS ACTION

Housing Advice Worker (Black Communities - African-Caribbean and Asian Communities)

£13,863 p.a.

Shelter-Nottinghamshire Homeless Action is an independent housing advice service operating throughout Nottinghamshire.

We are looking for a full-time Housing Advice Worker who will have lead responsibility for developing and delivering our housing advice service for the Black communities through our two housing aid centres and through outreach sessions in the Black communities in Nottinghamshire. The successful applicant should have experience of unpaid/paid work within the African-Caribbean and/or Asian communities and an awareness of housing issues, in particular relating to the Black communities. Experience of advice work and advocacy is essential.

Application forms and further details from:
Shelter-Nottinghamshire Homeless Action

38 Heathcote Street

Nottingham NG1 3AA

Tel: 0602 - 480479

Closing date for applications - May 6 1994

Shelter-Nottinghamshire Homeless Action is striving to be an equal opportunities employer. We welcome applications from all sections of the community.