

June 1994  
Issue 50

# outright! *free!*

*for gays lesbians and bisexuals in central england*

## SKATES ON FOR 'PRIDE

As preparations go ahead for Pride '94 in London, the Pride Trust have secured the most high-profile route ever for this year's Pride March on June 18th through Central London. As usual, the police wanted the march routed round the back streets but, following pressure from some Labour MP's, and Stonewall, agreed to the organisers' demands for the new route.

Likely to be the biggest march so far, the new two and half mile route takes in more of central London than ever before, beginning at Hyde Park before moving down Park Lane, through Piccadilly, along Pall Mall, down Whitehall, finishing in Parliament Square.

The organisers also promise to ensure that there will be adequate reserved space for wheelchair users at the front of the stage in Brockwell Park. Last year some wheelchair users were unable to gain access to the reserved area in front of the stage because the area had been invaded by able bodied people.

Performers on the main stage include Bananarama, Bjorn Again, Black Box ("Right on Time"), Boy George, Dannii Minogue, Horse (see article), Atomic Kandy, Fish, Jocelyn Brown, all hosted by Lily Savage and Yvette.

The march itself will be addressed by a big-name celebrity from the pre-march stage in Hyde Park at 11am, before the march kicks off at midday, preceded by one minute's silence in memory of AIDS combatants who have died. Several personalities have been approached, as we go to press, including French & Saunders.

OUTRIGHT spoke to Gary Henshaw, press officer of PRIDE who stressed the importance of as many people marching as possible. "The more marchers there are, the more notice the media will take of us, the police only count the marchers - they won't count the numbers in Brockwell Park. It would be nice to have marchers in the six figures", he added. Last year 40,000 marched and 100,000 went to the Park.

Coaches for Pride: Coventry/Nuneaton/Warwick phone MESMEN on

Rita Lynch at 'Pride '93

(0203) 224090; Leicester, phone Leicester Resources Centre (0533) 547412 (day) and (0533) 550667, 7.30-10pm; Pineapple Inn (0533) 623384; Nottingham, tickets on sale at Mushroom Bookshop, (0602) 582506; Sheffield, Triangle Travel (0742 722990).



Photo: Chris Richardson

**NOTTINGHAM'S LATEST  
LESBIAN DISCO**

## THE BOULEVARD HOTEL

Hartley Road, Radford  
(0602) 787014

## LESBIAN DISCO

*Boulevard Function Suite  
From 8.30pm every Friday*

**\*Women Bar Staff\***

**\* Bar 'till midnight \***

**£1.50 before 9pm, £2.00 after  
All tickets on door**



**SEPARATE  
ENTRANCE DIRECT  
TO FUNCTION ROOM**



**More info from Len Sexton, Boulevard Hotel  
(0602) 787014**



## ARRESTS IN LEICESTER

Following a stabbing at Slater Street in late April Leicester Police have arrested five people, four men and a woman. The four men have been charged with wounding and conspiracy to rob at Leicester Magistrates Court and will be dealt with by the Crown Court at a later date. OUTRIGHT spoke to Chief Superintendent Mick Perry of Leicestershire Constabulary. He said: "The arrests were made possible 'largely because of the successful liaison between the gay community and the police. The fact that we had a good working liaison meant there was no difficulty in turning to the Consultative Group for help."

Meanwhile the Police are actively pursuing enquiries regarding the harassment of gay men at the Abbey Park cottage where a number of gay men have reported money being demanded with menaces at knifepoint. If you can help the police catch this person, contact Charles Street Police Station 0533 482310. Your anonymity will be respected.

## MCC AT 'PRIDE

The Metropolitan Community Church are at 'Pride this year with their own banners. And, in response to the Sisters of Perpetual Indulgence who held mock weddings at last year's 'Pride, the MCC will be there at Brockwell Park in their own tent doing what they describe as 'the real thing'. A ceremony of Blessing of Relationships will take place for those who have made a booking with Rev David Miller from MCC in Brighton.

So, if you want to get hitched, contact Rev Doreen Shambrook, pastoral leader MCC Nottingham on 081-670-2619.

MCC also has plans for a celebration, and weather permitting, a picnic at All Saints Community Centre, Nottingham on 'Pride Sunday at 11.30am.

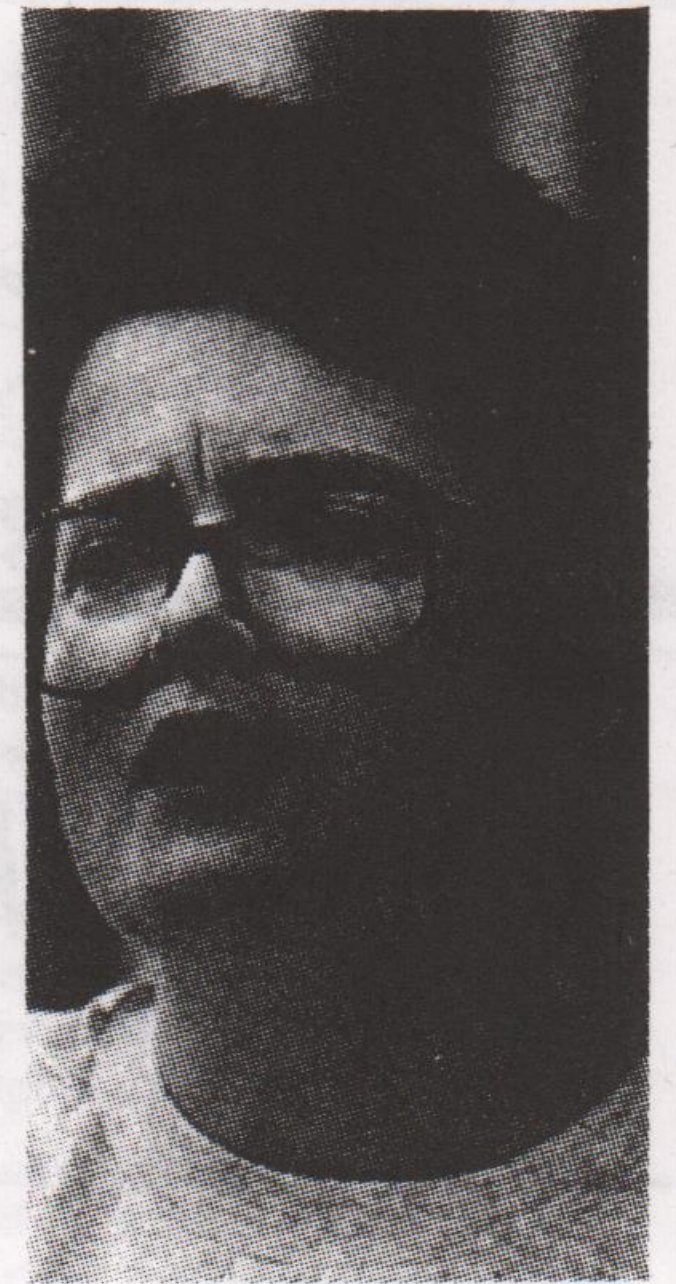
## 'ON THE SCENE' in Burton-on-Trent BURNT GATE INN

Hopley Road, Anslow  
Burton-on-Trent  
Tel: (0283) 63664

Olga & Tony  
welcome you on  
Wednesdays, mixed  
lesbian & gay night  
from 7pm to 11.30pm  
with a happy hour,  
7pm-8pm.

## DELEGATES STAND IN SILENCE

There was complete silence at the UNISON National Women's Conference which took place recently, in memory of eight gay men murdered in an arson attack on a London cinema. Angry delegates warned that their colleagues were coming under attack as a result of the recent Commons vote on the age of consent. Jackie Lewis, (pictured), said the basic principle of equality is one their conference should support. "Gays are treated as criminals in Britain," she said. "From 1988-1991 12,000 men have been arrested for consensual acts. This law is active and used to prosecute men, it's based on bigotry and prejudice." Delegates agreed to lobby MPs and campaign against the legislation and it was agreed that the union's governing body should review its links with MP's, opposed to equalisation. David Blunkett, a Labour member of the Shadow Cabinet, who voted against 16, is one of several UNISON-sponsored MP.



Sarah Bernhard



'BELLE'

## WILD THINGS



'GRIEF'

'Wild Things', the 8th London Lesbian & Gay Festival on Tour, appeared first in the Midlands at Warwick Arts Centre, moved on to Broadway in Nottingham, and is currently showing at the Metro in Derby and Phoenix in Leicester.

## LIFE IS *not* THE SAME IF YOU'RE GAY

The laws surrounding pensions make it difficult for unmarried couples to plan for retirement. When you are gay, it is not only the law that makes it difficult. It is the misconceptions surrounding intestacy and trusts. In other words, if you think you may ever want a partner to benefit from your pension plan in the event of your death you cannot leave it to chance.

Your independent financial adviser should not only inform you of the costs involved of any particular pension policy, but the size, strength and past performance of the pension office. Financial advice, however, does not stop there.

To us, getting it right seems surprisingly simple. We do not charge and our service is confidential.

An Approved Representative of



**GAY MONEY**  
**STRAIGHT ADVICE**

ivan massow associates

195 Wardour Street, London W1  
Tel: 071-494-1848 Fax: 071-494-1849

## EAST MERCIA MSC

Although East Mercia MSC is Leicester based, only 10% of its members live in the city, so to keep in touch with the ever increasing membership, they now have an Infoline. A call to 0902-659754 will provide a guide to what they have to offer.

## THE HEALTH SHOP

12 Broad Street, Hockley,  
Nottingham, NG1.  
Tel: 0602 475414

**A free and confidential drop-in  
service for gay men, bisexuals  
and lesbians**

- free extra-strong condoms, K-Y, dental dams and gloves
- HIV testing and counselling
- Hepatitis B vaccination
- Information, advice and support about safer sex, HIV and AIDS, sexual health and sexuality
- Drug advice and needle exchange
- Gay worker available

Open Monday - Friday 9.00am -  
12.30pm & 1.30pm- 5.00pm

**No appointments, no names,  
no problem**



# INTO 'THE EDGE'

It's now three years since Iain Duthie and Martin Walker packed up and left the East Midlands for Edinburgh and an uncertain future; Iain was returning to his homeland whilst Nottingham-born Martin, was arriving on new ground.

So much has happened in this time; both of them had a series of jobs, Iain worked for a time on a Scottish TV soap, called "Take the High Road" whilst Martin quickly became involved in the Scottish gay political movement, as well as studying part time.

## Tall airy premises

We are sitting in the tall, airy premises of the Edge Cafe, with the sun shafting in, as Martin presides over a large gâteau, dividing it with mathematical precision. Number 60 Broughton Street has been home to various organisations in the Scottish lesbian and gay movement, and the Edge is housed in the Lesbian Gay & Bisexual Centre, sharing two floors, with a leather shop and Gay Scotland. How had they come to be running their own gay business?

"If someone had told us three months' ago that we would be running our own business we wouldn't have believed them, but the lease on these premises became vacant," says Martin. "We applied for business loans, found an accountant



and decided it would be a good idea to maintain the continuity of a cafe for the lesbian and gay communities. We had both worked previously at another vegetarian cafe, Nature's Gate where we cut our teeth."

## Worked like crazy

"When the former occupants moved out not more than a week before our planned opening we worked like crazy to get the place ready, but

though we planned to open, we didn't expect to be so busy, so soon," says Iain before excusing himself to rush off to serve a bevy of customers streaming through the door.

The Edge is a licensed vegetarian cafe and open from 10am to 1am, reflecting the lifestyle of this very European, but very Scottish city, in the heart of the growing gay village around Broughton Street. Said Iain "There are already half a dozen openly gay or lesbian businesses nearby and there is a sense of camaraderie and support amongst them with growing numbers of lesbians and gay men coming to work nearby."

With the Edinburgh Festival on the horizon you can bet they will be working into the wee small hours. So why not drop in and sample the food when you're next in Scotland's capital city. We think you'll like it.

## BROADWAY

14 Broad Street, Nottingham Tel: 0602 526600 / 526611

Thanks to everyone who supported Wild Things, The London Lesbian and Gay Film Festival on tour, 1994 was the most popular tour yet.

### June/July Highlights

#### Philadelphia 1-4 July

Hollywood finally tackles AIDS, arguments still rage, see it and make up your own mind.

#### And the Band Played On 11-14 July

Phil Collins as a bathhouse owner!, yes seriously, but also starring Matthew Modine and Ian McKellen. Adapted from Randy Shilt's best selling book, this is the true life tale of early research into the HIV virus.

plus

#### Mon 11 July 7pm introduction by Sir Ian McKellen.

We hope to welcome Sir Ian McKellen to this screening to celebrate the launch of the GAI project, based at the Health Shop on Broad Street. Members of the GAI project will also introduce the film and compare British health promotion strategies in response to the HIV epidemic with the American experience portrayed in the film.

#### Coming Up...

Pedro Almodovar season to accompany his latest extravaganza *Kika* (22-28 July) including *Matador*, *High Heels*, and *Law of Desire*.

Also - the return of *Go Fish*

## METRO CINEMA

Green Lane Derby: box office (0332) 340170

### AND THE BAND PLAYED ON

Director: Roger Spottiswoode/  
USA/1993/141 mins.  
Unfolding like a detective story, this multi-million dollar production points to the politics as well as the horror of Aids, the battles against red tape, egos, lack of funds and countless self-interests.

Tue 21 - Thur 23 Jun at 8.30

### WILD THINGS

The 8th London Gay & Lesbian Film Festival on Tour.  
Nine programmes of work from the 8th London Lesbian and Gay Film Festival. The 1994 tour is dedicated to the memory of Derek Jarman.

### GRIEF

Director: Richard Glatzer  
USA, 1993, 87 mins.

Set behind the scenes of a tacky daytime TV soap, "Grief" charts the ups and downs of its script team as they struggle to get to grips with 'the case of the lesbian acrobats', in a smart screwball comedy about the complicated business of love and friendships.

Tue 28 - Wed 29 June at 8.45

### DELIGHTFUL DYKES & LOVELY LEZZIES

110 mins  
Beautifully titled selection of some cutting edge work from lesbian directors around the world.

Thur 30 June at 8.45

### SAPPHIC SHORTS

95 mins.  
Short, sharp, slick and sexy - eight old, new, and rather blue dyke tales.  
Sat 2 July at 8.45

### TALES FROM THE CITIES 2

80 mins.  
Boys just want to have fun in this short and sassy collection of urban tales.

Sun 3 July at 8.45

### MALE SHOTS

Tue 5 July at 9.00  
90 mins.

A provocative, teasing and frequently hilarious programme of video work.

### A TOUCH OF FEVER

Japan, 1993, 114 mins.  
19-year-old Tatsuru studies economics by day and sells his body for extra money by night in a gay club - though he considers himself straight. A touching film about the uncertainties of youth, loneliness and love.

Thur 7 July at 9.00

### BELLE

Netherlands, 1992, 99 mins.  
Shot in exquisitely crisp black & white, this is a dreamy evocation of childhood, first love and social pressures to conform. Belle's world collapses when the family maid leaves, but against her parent's wishes, she follows her, continuing a passionate, enduring affair.  
Sun 10 July at 9.00

### CONFESSIONS OF A PRETTY LADY

plus DREAM GIRLS (total 100 mins)  
A richly entertaining portrait of Sandra Bernhard on and off stage; plus an extraordinary documentary, sensually exploring the Japanese tradition of male impersonation by young women in extravagant romantic musicals.

Tue 12 July at 9.00



# REVIEW - "Shakers"

by Janet Owen

Jane Thornton's "Shakers - the musical" is fast and funny and gives women the chance to play men, thus breaking a tradition of several hundred years. The play was originally conceived by Thornton and John Godber, as a "sister piece" to Godber's "Bouncers" and this new musical version incorporates many changes and, of course, songs. Nottingham Playhouse premiered the play in May and it was very popular.

"Shakers" is a cocktail bar in which four women, Nicky, Adele, Mel and

Carol, work and moan and laugh, all the while providing incisive comments on the nature of their customers. The actresses frequently change the roles, suddenly becoming Sharon, Tracey, Elaine and Suzy, and checkout operators, or four over-confident, sexist businessmen, or even four lager louts out to grab anything that's passing.

Whilst being painfully accurate in its humour, "Shakers" is also touching in its quieter moments. No faults, foibles or hang-ups escape the pens of Jane Thornton and John Godber and the audience shares the characters' continual crises.

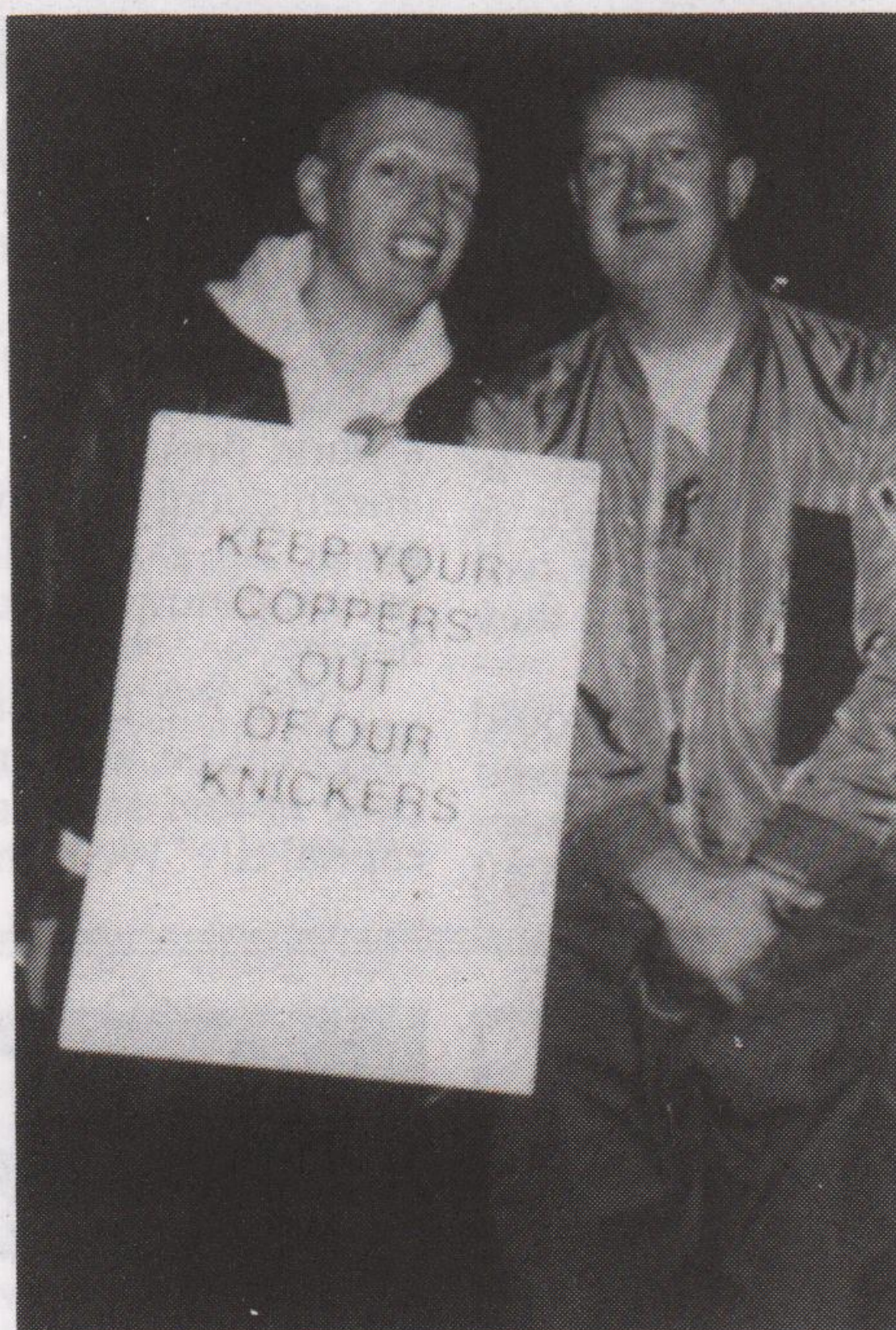
## THE LIVING END

Nottingham's International Mystery and Thriller Festival takes place from the 9th to the 19 June at Broadway and includes the 1992 Gregg Araki film, "The Living End". This is a tale about



two HIV-positive men who flee Los Angeles and embark on a spree of violent sexual adventures. The film makes uncomfortable, yet enthralling viewing. Friday 17th June, Cinema 2, Broadway, Nottingham.

Randy Shilts, campaigning AIDS Journalist and author of 'And the Band Played On' died just a month before the film of his book was released. Aged 42, Shilts laid bare official foot dragging in the early years of the AIDS crisis. He also wrote 'The Mayor of Castro Street', about the life and times of Harvey Milk, out gay Councillor assassinated in San Francisco ten years ago.



Paul Fairweather & Ian Wilmott, protesting against police raids on Mineshaft Club, Manchester

## USE YOUR BUYING POWER



Buying from countries and companies with a commitment to social justice - Hiziki has the widest range of wholefoods, fresh bread, take-away snacks, organic fruit & veg, vegetarian convenience foods, and organic wine & beer in Nottingham. We also stock many natural remedies, cruelty-free toiletries & environment friendly cleaning products.

5% discount for UB40s, OAPs & students on Wed/Thurs.

Hiziki is a workers' co-operative  
15 GOOSEGATE, HOCKLEY  
NOTTINGHAM

FOR POSITIVE CHANGE

## NOTICE BOARD

### ▽ Nott'm Trent Uni LGB

The Lesbian, Gay & Bisexual Society meet on Monday 6th June at 8pm, Student Union (Surya on Disability), 13th June (Queer Rounders), 20th June (Bisexuality). All welcome. More details from SU.

### ▽ Under 26?

One day of workshops, activities, discussions with free food, creche, videos, fun! Sat 11th June. Details from Nott'm Lesbian & Gay Switchboard (see helpline panel page 10).

### ▽ 12 Years in Leather

East Mercia MSC hosts the European Confederation of Motor Cycle Clubs Bikerun from 3rd to 10th June. The club also meets on the 11th (club night) and 25th June (rubber night) at Leicester Place, 24 Dryden Street, Leicester. Blackpool weekend 15th-17th July.

### ▽ Sunday Breakfasts

From 11am-3pm on Sun 12th June and Sun 17th July at Croft Family Centre, Albert Road, off Woodborough Road, Nott'm. All welcome.

### ▽ Casablanca

Period cinema in a period setting: 18th June at 7.30pm at Stanford Hall theatre, Loughborough. Prize for best Bogart look-a-like and best female in period costume. More details from Lavinia 0509-852333.

### ▽ Workers in Education

Pink Chalk (East Midlands Lesbians, Gay Men & Bisexuals in Education) meet at the ICC, 61b Mansfield Road, Nottingham on Saturday 25th June at 2pm. More info from Anthony (0602) 585814.

### ▽ Leics Bisexual Group

A new group in Leicester, meets twice monthly, Friday evenings at 45 King Street at 8.30pm.

### ▽ Black Lesbians & Gays

Meet fortnightly at Leics Lesbian & Gay Resources Centre, 45 King St on 16th and 30th June, and 28th July. More details from (0533) 550667.

### ▽ Leics Youth Group

Leicester Lesbian & Gay Youth Group meet every other Thursday at 7.30pm at 45 King Street.

### ▽ Young Lesbian Group

Meets every Thursday 1-4pm at Base 51, Glasshouse St, Nottingham. Lesbians 25 and under are very welcome. More details from Clare (0602) 425040, or just turn up. Full wheelchair access.

### ▽ MAPS

Mansfield and Ashfield Positive Support now has a new name, and a new address: PO Box 3, Mansfield, NG16 1QT. Phone no./answerphone is (0623) 26254.

### ▽ Drawing Board

A 'Trueline' A1 floor-standing drawing board for sale, excellent condition, £35. 0602-780124.

## LINCOLNSHIRE AIDS VOLUNTARY GROUP

Tel (0522) 513999

Mon, Wed, Fri 9am to 9pm  
Tues, Thur 9am to 5.30pm  
24 hour answerphone

For information, advice,  
support, buddying,  
safer sex etc

*All calls confidential*

Please call the above number  
or visit us in Lincoln at  
**THE HEALTH SHOP,  
PORTLAND HOUSE,  
3, PORTLAND STREET,  
LINCOLN.**

## DERBY AIDSLINE

Worried/confused about  
HIV/AIDS?

For confidential advice and  
information, phone FREE on  
Derby Aidsline

**0800 - 622738**

Mon & Thur 7 - 9pm  
Thurs 2 - 4pm



# THE GAI Column

## Gay and Bisexual AIDS and Health Initiative

Are you worried about GRID? Are you concerned that your friends and lovers may be at risk from Gay Related Immune Deficiency?

Of course you're not. GRID doesn't exist anymore. It's the name that AIDS was given before anyone knew that you don't have to be gay to get the HIV virus. When newspapers were screaming about a "gay plague" and no-one cared about people dying, it made sense to point out that AIDS is not a gay disease. It meant that money was available to fight HIV and the organisations we started finally got some of it.

But now we're asking what the effect of 'de-gay'ing the HIV crisis has been? It allowed health bosses to spend that money on virtually anything except us. It meant that AIDS organisations became cut off from the communities that started them. It meant that some gay and bisexual men have the impression that HIV isn't really our problem anymore.

## Gays 'not to blame for AIDS'

by HUGO DAVENPORT and OLIVIA TIMBS

THE killer disease AIDS is not a 'gay plague' but an affliction which spans a widening cross-section of social groups. commemoration of an AIDS victim, has been at the forefront of campaigning for greater resources to be devoted to research and care facilities for the afflicted. state that 'Until we know symptoms more, you should not give are p' blood or carry an organ donor infer card.' The trust points

But 75% of AIDS diagnoses and 70% of new HIV infections in this country are still gay and bisexual men, and the figure may be going up. Does that surprise you? Reading newspapers, watching television or simply talking to people in the last eight years, you'd be forgiven for thinking that AIDS had started to leave us alone.

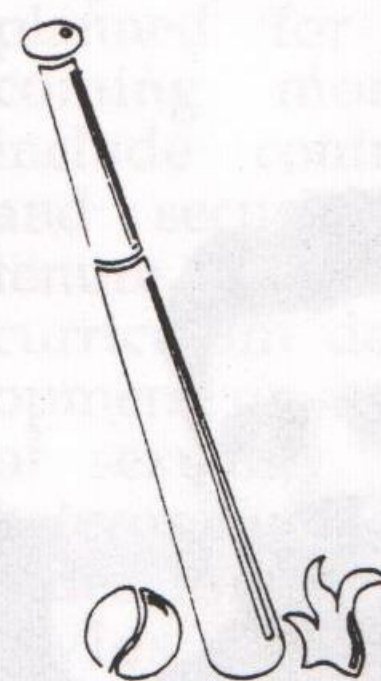
When health professionals talk about 're-gay'ing AIDS' it doesn't mean going back to the time when heterosexuals thought they'd get HIV from being in the same room as someone gay. It doesn't mean that people with HIV should have to face even more homophobia.

But it does mean recognising that gay and bisexual men's health has been neglected. It means that its time to say that we have the right to live healthily and sexily, and the right to the information and support to help us keep doing that. Watch this space.

This article was written by Simon Wright, Project Worker (Gay and Bisexual Men) and is the first of a regular column, which will be produced by gay health workers across Central England. The GAI Project is based at the Health Shop, Broad Street, Nottingham, NG1 3AL, 0602 475414.

# STRYKERS

## Gay SAUNA



OPEN MONDAY - SUNDAY  
12 NOON - 11PM

15 Carlton Road, Nottingham  
Above HSS Hire Shop

Entrance £5

Phone (0602) 481008

## THE MEN'S SEXUAL HEALTH PROJECT

45, King Street, Leicester

ALL OUR SERVICES ARE FREE AND  
CONFIDENTIAL YOU DON'T EVEN HAVE TO  
GIVE YOUR NAME

Available free to all men who have sex with men regardless of  
age, sexuality, race, religion, disability, or antibody status.

### TRADE

is a group of gay and bisexual men from a range of  
backgrounds with one thing in common - we all want to do  
something about the growing HIV epidemic.

FOR THE DATE OF OUR NEXT MEETING AT  
45 KING STREET, LEICESTER, PHONE ANDY.



If you would like to find out more about us, or are  
interested in getting involved, why not come along.

We are particularly keen to recruit volunteers from Black  
communities who are currently under-represented in our group.

For more information phone Andy:  
0533 541747 (office hours)

## FREE CONDOM DROP IN

Opening times

Every Thursday 11.30am-2.30pm

Every Friday 11.30am-2.30pm

Second Saturday each month 12.00am-3.00pm

(No appointment necessary)

If you have difficulties visiting during these times ring  
0533-541747 for an appointment free.... (and easy)

ABSOLUTELY FREE!

\*A choice of gay safe condoms \*Water based lubricants \*Dental dams, latex  
gloves \*Information, counselling and support on HIV/AIDS, sexuality,  
relationships, HIV testing, safer sex or any concerns about sexual health  
\*Leaflets, safer sex videos, posters etc.

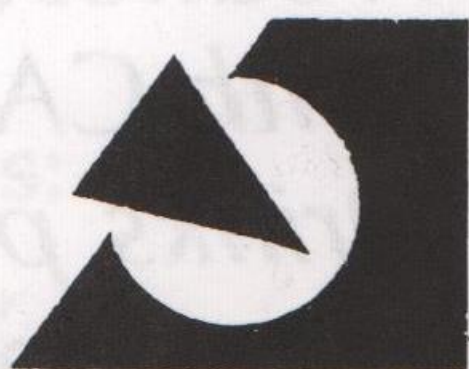
## INDEPENDENT BOOKSHOP

## SUPPORTS LESBIAN & GAY PRIDE

Wide range of lesbian and gay books.  
Book list available.

Open 9.30am (10.30am Thurs) to 5.30pm  
Monday - Saturday

69 SURREY STREET  
SHEFFIELD S1 2LH  
(0742) 737722 - 758288





# A DYKE CALLED HORSE



Horse McDonald, lead singer of the Glaswegian Scottish band **Horse**, whose musical style was recently defined by Melody Maker as "lesbian-fronted-soft-centred-but-still-kindapunchy-soul-rock." Their extraordinarily life-affirming, burning soul pop has built a massive and dedicated following. She has become a role model for lesbians who don't feel they fit into the trendy lesbian stereotype. Meanwhile, the band are

waiting to see whether their recently released single, 'Celebrate' will give them a hit. If their popularity in Scotland is anything to go by, they should make the big time and graduate to mega-stadium status; all the local radio stations love them. And their songs are mighty. (**Horse** pictured left to right: Angela McAlinden, Horse McDonald, George Hutchinson). See them on the main stage at 'Pride on the 18th June.

**8th London  
Lesbian & Gay  
Film Festival on Tour**  
All tickets £3.50 (£2.50)  
*Wild Things* brochure  
available from box office

**Tales of the Cities II (18)**  
Fri 1 July 8.30pm

**Sandra Bernhard:  
Confessions of a  
Pretty Lady (18)**  
Sat 2 July 6.15pm  
+  
**Dream Girls (18)**

**Male Shots (18)**  
Sun 3 July 6.00pm

**Delectable Dykes  
& Lovely Lezzies (18)**  
Sun 3 July 8.00pm

**Grief (18)**  
Sat 16 July 6.15pm  
Sun 17 July 8.30pm  
Mon 18 July 6.15pm  
*There will be an  
introduction before the  
Sun 17 screening*

**P H O E N I X**  
A R T S

**Box Office 0533 554854**

Phoenix Arts is a registered charity



## LESBIAN & GAY ADVICE WORKERS MEET

Nottingham is the venue for the next meeting of the national Lesbian and Gay Group in CAB's. Over recent years the National Association of Citizens Advice Bureaux who part fund and make policy for all the local Bureaux up and down the country have been working towards equal opportunities for lesbians and gay men.

This is your chance to meet other lesbians and gay men in the CAB service if you work in this field. The meeting takes place at 11am at NCAB, East Midlands Area Office, 1st Floor, Blenheim Court, Huntingdon Street, Nottingham. The meeting room is fully accessible for people using wheelchairs - please get in touch with the national rep if you have any other special needs. Travel expenses are reimbursed. For more information contact Jason on 081 870 6561.

## Simon, Nigel, John and Staff welcome you to MARSDEN'S BAR

13 Marsden Street, Chesterfield (off Saltergate)  
(0246) 232618

**Sunday Nights - CABARET.**  
**Tuesdays - QUIZ NIGHT.**  
**Wednesdays - *Camp it up***  
***with CAPTAIN GINGER.***  
***Drinks promotions galore***  
***throughout June.***



# PINK CHALK

Pink Chalk is a forum for lesbian, gay and bisexual workers in education in the East Midlands and South Yorkshire. The group has met monthly since February of this year at the International Community Centre, Mansfield Road, Nottingham. Membership is open to everyone working in education in whatever capacity, and at present includes teachers, tutors and lecturers from the primary, secondary and tertiary sectors.

"We hope to provide mutual support and advice and to discuss a wide range of gay-related issues as they affect our



work. In our opening meetings we looked at problems of harassment and discrimination, and received a report on the recent NUT conference on lesbian and gay issues in education" says Keith Rainger, a member of the group. "Topics

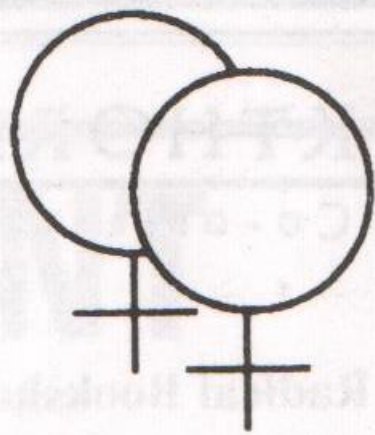
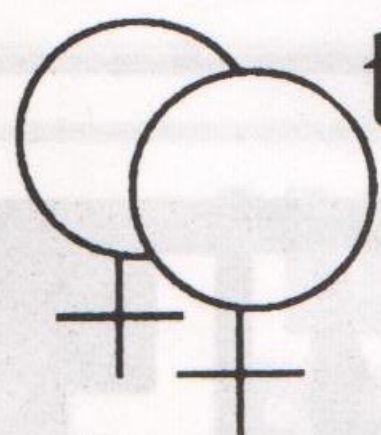
planned for the coming months include contracts and security of tenure at work, curriculum development on issues of sexuality, and heterosexual attitudes to gay lifestyles as expressed in schools and colleges. Refreshments are provided, but after an afternoon of serious talk, many of us adjourn to a

local pub for a drink and a more informal chat. Next meetings on Saturdays, June 25th and July 16th at 2pm at ICC, Nottingham." Further details from Nottingham Lesbian and Gay Switchboard (see helplines page 10).

## GETTING AWAY FROM IT ALL

Ever fancied having a weekend away with other gay men in pleasant, gay-safe surroundings? The last three weekend breaks in Derbyshire were fully booked. As one participant told us: "I never realised how supportive gay men could be to one another". The next break is 16th-18th September at a comfortable place on the Lincolnshire Wolds. There is space for 24 men, in four-berth rooms. So whether its Skeggy you're into, cycling for softies, walking solo or with friends, contact us for more info. Full board, sliding scale from £29 all in. Stonewall Breaks, PO Box 4, West PDO, Nott'm, NG7 2DJ. (0602) 780124.

Would you like  
more friends to meet?  
more places to go?  
more things to do?  
then join.....



# KENRIC

The Nationwide Group  
for Lesbians

Write for details:  
c/o BM Kenric,  
London WC1N 3XX.



27 BURLEYS WAY • LEICESTER  
TEL: 0533 • 623384  
Opposite St. Margarets Bus Station

Fri 3rd June - MOPP & BUCKET - *Drag*

Sun 5th June - GENESIS - *Stripper*

Fri 10th June - DAVID D - *Singer*

Sun 12th June - BLUE STEEL - *Stripper*

Mon 13th June - QUIZ NIGHT

Fri 17th June - PRE-PRIDE PARTY -  
*with REVIVE*

Sat 18th June - PINEAPPLE COACH  
TO PRIDE

Sun 19th June - JET - *Stripper*

Fri 24th June - DIAMOND SEARCH  
FOR A STAR

Sun 26th June - PEUGEOT - *Stripper*

Fri 1st July - PENNY CHANGE - *Drag*

*Happy hours every night 7-8.30,  
bitter and lager £1 a pint*

**All spirits £2 a double  
throughout June**

*Secure car park now open*



# SAMPLES by Simon Smalley

## Heartbreak Hotel

As the years teeter by on the highest of heels, what more can be said about the icon of despair Dusty Springfield? Hot on the trail of the recent telly documentary is an utterly swoonsome compilation which most people will be aware of by now. 'Goin' Back' gathers together the beehived one's many highlights in a convenient bijou package. Always a star with the gay nation, we've always identified with her, not only 'cos of her ultra camp image with her zooshed riah, big black ogles like a panda with a bouffant, crammed into a



variety of slinky cocktail dresses, but because of the sheer intensity of the emotions displayed in her voice. Such a star of stars with the queens 'cos you felt that she'd had her heart broken in ump-

teen places (including Amsterdam and Memphis) as we all have, so she lanced that emotional boil called 'heartache' and poured it all out for us to take solace in her dusky Dusty tones. You just knew she'd been there and felt it. If Dust could bounce back then so could you.

All the biggies are here, the early harmonic delights of 'Island of Dreams', the kitschy 'Silver Threads & Golden

Needles', an effortless glide thru 'Son of a Preacher Man' (the first 45 I ever bought), out Gilberto-ing Astrud on the weptastic 'Look of Love', a Hi-NRG romp over the Pet Shop boys collaborations and culminating with the oft (badly) covered 'You Don't Have to Say You Love Me'. Quite simply, Dusty Springfield led where others followed humbly and inadequately in her stilettoed wake. Pour moi, her whole talent and supreme ability to convey emotions is summed up on her epic 'I Just Don't Know What To Do With Myself', when she almost hysterically implores "Baby, if your new love ever turns you down, come on back, I will be around... just waitin' for you." Oh, Lordy, pass me the Kleenex!

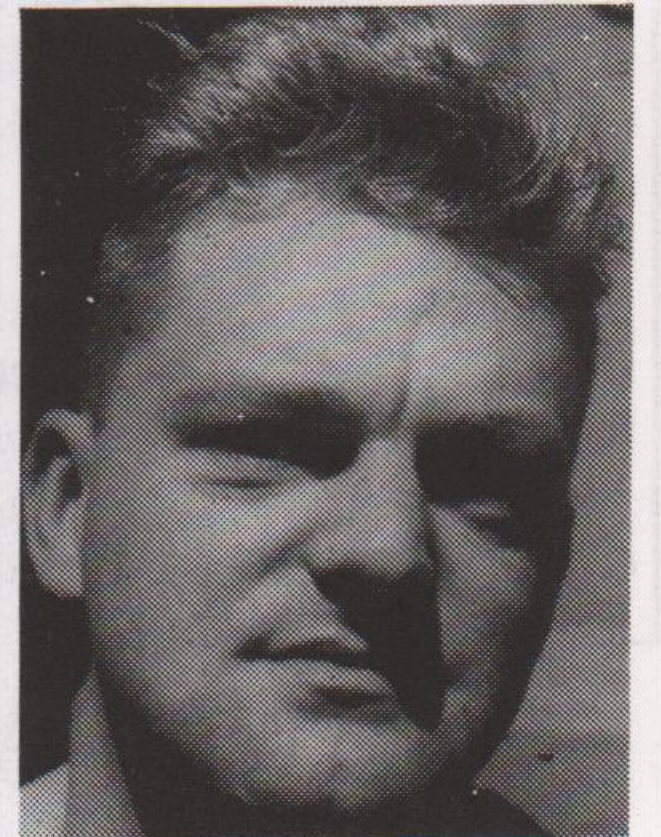


## Love & Desire

In a scant few years Erasure have easily bridged the gap from quirky tinkly electropop duo to hardcore TOTP hit-makers with the ensuing mass acceptance and respectability. Their new LP 'I Say, I Say, I Say' consolidates their position perfectly and illustrates how the Clarke/Bell songwriting partnership has matured and mellowed from being slightly watery to being full bodied and fruity. 'Take Me Back' is a gently meandering opener and with the lovely phrase "Where the weary willow weeps for me"

brings to mind an almost Deliusesque 'Summer Night On The River' ambience. (What's she like?). The uptempo kick-starts are in evidence on 'I Love Saturdays', replete with its 'In The Navy' riff and the Hi-NRG kick between the legs of 'Run To The Sun', one of their finest high octane workouts with the announcement "But I'm open to the joys and woes of passion". I dunno what kind of emotional upheaval either have been through but they seem to be captain and cabin boy of a pop ship pitching and rolling on a turbulent and traumatic sea of human emotions.

Whatever they've experienced, it shows consistently throughout the lyrics of this remarkable and deeply joyous foray into electropop orgasm. For your trusty



reporter, the bestest track Clarke 'n' Bell have ever composed is 'Blues Away', showcasing the maturity in which their work is steeped. This gem has it all, elegant melodies, layered harmonies and an emotional depthcharge. The orchestral swoops and swishes of 'Man In The Moon' and 'So The Story Goes' compliment Missy Bell's vocalising of a passion dormant too long. The closing ballad 'Because You're So Sweet' could be covered by any large-lunged diva in a high production overload style and to coin a pop phrase, Give me more, more, more!

## WOMEN ONLY NIGHT

A new 'women only' night has begun at GHQ club in Humberstone Gate, Leicester. The event is held weekly from 8pm to midnight every Sunday, including a free buffet.

## NOTTINGHAM AIDS PROJECT

In the May Outright - "NAIP Crisis" - we incorrectly stated that 'Sue Lakes has been made redundant'. She asks us to point out she resigned her post with NAIP and that we mis-spelt her name. We sincerely apologise to Ms. Loakes for any embarrassment this has caused her and wish her well in the future.

## PRISONERS

Know of a prisoner who would like Outright delivered each month? We post copies free to prisoners. Send the name, prison address and prisoner number to us at PO Box 4, West PDO, Nottingham NG7 2DJ and we'll do the rest.

Terry, Paul,  
William and Steve  
all welcome you at the

# DOVER CASTLE

Dover Street, Leicester

Mon - Fri 12 - 4pm  
and 6 - 11pm.

Saturday 12 - 11pm.

Sunday 12 - 3pm  
and 7 - 10.30pm.

**B** BLACKTHORN  
BOOKS CO-OPERATIVE

Leicester's Radical Bookshop

*Just in!*

'The Guide to Lesbian &  
Gay Parenting'  
by April Martin.

'DIVA' No. 2.

'The Burning Library'  
by Edmund White.  
*Have a great Pride!*

70, High Street, Leicester  
(0533) 621896

# ANVIL PRESS

# PRINT & DESIGN

# A WORKERS CO-OPERATIVE

Tel: 0332 298213



# MAKING ROOTS

Joe Tang has been in England for over 13 years now. But only recently has he felt secure enough to be fully upfront about his sexuality.

It was in 1980 that Joe arrived in Manchester to study computer sciences, but he soon found it was not for him and changed to teacher training, later specialising in teaching the Deaf. Following completion of his studies he decided to remain in Britain.

## Work permit

"I was lucky to find a job after my course and the coveted work permit enabled me to remain in England until four years' later I qualified for permanent residency". For several years he worked in Nottinghamshire before moving to Sheffield to teach in Secondary Education. He soon put down roots, bought a house where he lives with his partner, Peter.

## Religious background

"I only found out I was gay when I started going to GaySoc at University. With my Roman Catholic religious background coming out was quite painful at first. I also had to be careful that other Singaporean students didn't find out, because our country is a small place and word soon gets back. Singapore is a very autocratic and paternalistic society with a very strong emphasis on conformity, and the suppression of individuality." Joe moved out of the flat he shared with other Singaporeans into a shared flat with a pre-operative transsexual person.



## Experienced racism

Joe has experienced his share of racism here like most Black or Asian peoples. "Usually it has not been openly expressed and is often, subtle like the times I would get approached as a new young face on the scene, by all these white men, who would assume I would be just dying to have sex with them simply because of their colour", he says.

He also remembers once being confused for someone else. "It was getting dark and this white youth across the road mistook me for a friend of his. When the youth got close to me and realised I wasn't his friend he said 'Oh he's only a Chink!' I suddenly felt that my whole life was of no consequence".

## Stop the Clause

Joe soon became immersed in gay politics, as Student Treasurer of GaySoc at Manchester University and later in the Stop the Clause Campaign. "I got involved in gay politics because I felt I needed to put something

back into the lesbian and gay communities that have supported me emotionally during my early years here."

Since moving to Sheffield he has become Vice-Chair of Sheffield Gayphone and is also involved on the Management Committee of Sheffield Lesbian & Gay Youth Group. "As far as I know I am the only openly gay Chinese activist in Sheffield at present. I would like to see more come forward", he says.

## MIDLAND BAND PLAY MAIN STAGE

Atomic Kandy, the Nottingham-based lesbian band are playing the main stage at Pride, and also on the Cabaret Stage at 8.45. Coinciding with Pride is their first single release, 'Don't Wanna Stop' which will be reviewed in our July issue.

## 4-D PROMOTIONS PRESENTS

# THE LAVENDER BALL 1994

*The Social Event of the Year!*

**Saturday  
10th September  
Colwick Hall  
Nottingham**

Full Wheelchair Access  
Non-Smoking Lounge  
Women Only

For further information  
Ticket details etc  
Ring 0602 586142  
(office hours)

## MAKING AN ENTRANCE

The regular Friday lesbian discos continue at the Boulevard Hotel, Radford, Nottingham. The smart function suite attracted a large crowd on its opening night. Now the Manager, Len Sexton has put in a separate entrance so that people don't have to go through the main bars. A regular supporter of the Boulevard, Glenise Chandler said: "The Manager seems to be going out of his way to ask women what they want, like getting the right music and putting food on which is a good start".

## LESBIAN HOUSING CO-OP

**Nottingham**  
2 spaces available in  
shared housing.  
£34 per week plus bills.  
Contact Lesbian Line (0602)  
410652, Mon & Wed 7-9pm

## QUEER PRIDE COACHES

Coaches leave from Coventry, Nuneaton and Warwick on Saturday 18th June for 'Pride. Tickets cost £8/6(concs). Pick up a flyer in local pubs of phone MES-MEN on (0203) 224090 for more details.

## LESBIAN HOSTEL - WEST OF IRELAND -

Surrounded by mountains and moorland  
and overlooking Lough Allen.

Sliding scale from £6.50

Camping space available

Alix, Garvesk, Dowra, Co Cavan, EIRE

Tel: 010 - 353 - 78 - 43264

## DERBYSHIRE BODY POSITIVE

*for friends, carers, partners  
who are HIV+*

Please contact PO Box 124,  
DERBY DE1 9NZ or phone us

**Tuesdays:**

**10.30am - 1.30pm**

**Thursdays:**

**11.30am - 4pm**

**0332 - 292129**



# classified...classified...classified...classified...

**HOW TO REPLY.** Seal each reply in a separate envelope. Write the number of the Box you are replying to in the top right hand corner of each envelope. Place them in a larger envelope. **Enclose two loose first class stamps for each reply: replies without stamps are not forwarded** Address the outer envelope to **Outright**, stamp and post to: PO Box 4, West PDO, Nottingham NG7 2DJ.

## MENS PERSONAL

**MIXED RACE** brown eyes easy going like clubs pubs seeks someone likewise student vegetarian for fun poss 1-1. ALAWP. Box 284.

**NOTT'M**, 32, cut, Body+, very effeminate, enjoys massaging handsome young men in or out. Reply with contact arrangements. Under 40s only. No time wasters please. Box 285.

**BOYISH** 30 seeks true romantic, 5'6", smooth. I'm a sweet hearted soul. I want 35+ guy. From Torquay, Devon for 1-1. I'm willing, serious to move from Leics. Box 286.

**DERBY COUPLE** sought for safe fun and midweek overnight stays by flexible, inquisitive 24 year old male. Box 287.

**ANYWHERE**. 30's, chunky looking for fun and rampant frolics with older chunky hairy stocky overweight gentleman. No hang ups, gsoh more important than anything. Photo apprec. ALA. Box 288.

**NORTH NOTTS**. Young 46, slim, small seeks chunky, loving, romantic outdoor type. Cuddles, kisses, talking and wide open spaces. Ideally for 1-1 or committed, loving friendship. Box 289.

**MIDLANDS GUY**, too long untried, good physique and looks, seeks 'unplugging' by genuine guy, any age, good frame essential. Tel No. ALA. Box 290.

**NAUGHTY** boyish types in black trousers/worn jeans report for traditional over knee spanking/slipping. Uniform types welcome. Frank letter detailing requirements. Photo if poss. Box 291.

**NOTT'M**, late 40's, 5'11", slim, recently divorced. 20 years frustration needs releasing. Seeks younger affectionate loving guy to take me in hand and give me street cred! Box 292.

**TENDER LOVING CARE** urgently needed by Nott'm guy, 31, bright, tall,

slim, lively, gsoh, not bad looking, out! Into movies, pubs, sf. You too? ALAWP. Box 293.

**LEAMINGTON** bisexual, affectionate, clean shaven, slim build, n/s, with varied interests seeks similar genuine bisexual guys not promiscuous for friendship. Discretion assured. Photo/age not essential. Box 294.

**NOTTS/ANYWHERE**, smooth, cute, gsoh, seeks young men for friendship, pen pals, fantasies, experiences. Only very open minded under 25's who take selves seriously need apply. Box 295.

**LEICS**, 24, good looking, 5'11", w/e, seeks horny mates with good bodies for fun and friendship. Box 296.

**MELTON MOWBRAY** guy, 36, blond, hairy, non-camp, non-smoker, looking for loving relationship with Mr Right. Plenty of kisses, cuddles. Melton/Leics. Photo/phone essential. Box 297.

**EIGHTEEN**, good looking, tall, slim, sincere guy looking for friends poss 1-1. East Mids area. ALAWP. Box 298.

**NOTT'M**. If you're seeking a discreet, professional, passive guy, who's 44, tall, dark and honest, then write! Age irrelevant: 'tached and hirsute appreciated. Box 299.

**WELL BUILT** city gent, loves the good things in life, seeks honest partner for real friendship, poss 1-1. Photo/phone please. ALA. Leics. Can travel. No timewasters. Box 300.

**LEICS MALE**, mid-40s, n/s, 5'9", enjoys rambling, travelling, visiting places, swimming, fishing and other water sports. Looking for friends under 35, any race, also videos. Box 301.

**NOTT'M** professional, late forties, tall, slim, sincere, many interests seeks special friend. Box 302.

**EAST MIDLANDS** gay gent on the lonely side seeks friends in a similar position. Age immaterial. Can offer hospitality or exchange. Member LGCM MCC. Photo exchanged. Box 303.

**SHEFFIELD**. Petit, non-smoking professional seeks loving friendship (21-33) any race. Romantic with arts, travel interests. Into scanty briefwear. Please no timewasters. I've been hurt before. Frank letter. Box 304.

**WORKSOP AREA**. Not looking for love. Seeks average looks w/e male for occasional visits my place to let off steam. Suit married attached bi guys. Box 305.

**NOTT'M**, 27, good looking, fit, into cycling, swimming, cinema, pubs, clubs, music; loves eating/going out. Wants like-minded friends 23-35 to have fun. 6', dark hair/eyes. Box 306.

**LEICS/ANYWHERE**: male, 30, gsoh. Enjoys clubbing, music, writing, nites in/out wishes to meet that special guy (18-30) for long lasting relationship. ALA. Box 307.

**DERBY GUY**, 35, tall, OK looking, enjoys walking, swimming, cycling etc. Shy but gsoh. Seeks similar guys 25-55 for socialising. Phone no. if you have one please. Box 308.

**GRANTHAM BIKER**, tall, 40's, seeks submissive pillion or biker for friendship and indoor/outdoor fun. Facilities also available for leather, naked, cp, sm, bondage etc. Expenses shared. Box 309.

**NOTT'M/ANYWHERE** 36 tall medium build straight acting likes pubs smoking seeks similar guy for hot horny times I'm genuine sincere long term friendship 1-1. Photo. ALA. Box 310.

**LEICS AREA**. Fit 40+ seeks new friend(s) and relationship. Active life-style includes outdoors, arts, entertaining. Attracted to intelligent, sensitive, slim men, probably 30+. Box 311.

**NOTTS** 46 bearded straight acting looking seeks local guys any age varied interests over knee games nothing heavy interested oaps considered frank letter genuine can travel. ALA. Box 312.

**RETIRED GAY** couple film buffs coaches cooking interested meeting similar for home visits within the Midlands area. ALA. Box 313.

**EAST MIDLANDS**. Caring, honest, reliable, outgoing, passive Gemini, 53. Many friends. Into gym, music, driving etc. Seeks (ideally) 1-1 with fit, slim-medium build male 27-43. Box 314.

**NORTHAMPTON**, 40 years old, attractive, nice, seeks younger friends for no-strings fun. Box 315.

**BARNSELYS YORKS** guy 31 dark hair. Medium build many interests clean very horny straight acting genuine seeks men who knows how to be a man 25-45 discretion assured. Box 316.

**LEICESTER**, 35, White, good body, seeks slim, non-scene Asians, under 45, who want more attention where it counts. Active preferred but not essential. Can accomm. Discreet. Box 317.

**PEN PALS** 18-25 needed by !Cell Block H Guy! 30ish with very gsoh. Go on, be a devil. Shock me if you can! ALA. Box 318.

**NOTT'M/ANYWHERE**. Good looking non-scene guy, 29, slim, 5'8", clean cut and fit seeks similar for hopefully 1-1. Age 18-35. Box 319.

**ANYWHERE**. Randy guy 55, big tache. Seeks pen friends especially big, chunky, hairy. Into underwear, rugby. Any age/colour. Frank letter, photo if poss. Get writing now. Box 320.

**DERBYS/BURTON**. 40, 5'10", attractive, slim/medium build, loving, caring guy. Own place. Seeks active funloving genuine guy, animal/pet lover. Friendship poss 1-1. Photo please. ALA. Box 321.

**CHESTERFIELD AREA**. Male, 29, occasional scene, blonde, looking for affection, honesty, gsoh, straight acting person. Fed up of being messed around. Own home & car. Box 322.

**GRANTHAM BIKER** seeks pillion buddy. Leather/rubber, bondage, cp. Varied kit and equipped studio available for safe fun. Box 323.

**NOTT'M**, 30ish, straight acting/looking, passive bisexual guy looking for intellectual active masculine strict partner, friendship first poss 1-1. Box 324.

**NOTT'M**. Lets head for the woods. Me 39 into keep fit, still in good nick. Vegetarian non-smoker. You 21-35 with similar interests. Please send photo if poss. Box 325.

**MID-29 YEAR OLD GUY**, tall, blonde, blue eyes, hairy chest, told good looking. Seeks fun minded people up to 35, no strings just good time. Photo please. Box 326.

**LEICESTER**, 26, 5'11", dark hair, blue eyes, good looking graduate, seeks genuine guy(s) for friendship/relationship (under 28) within 100 mile radius! Write now! ALA with photo/phone. Box 327.

**TWENTY**, almost a virgin, seeks young virile Asian man to change this. All I ask is that you must be young, caring and all man. Write soon! Box 328.

**NOTT'M/DERBY**, 40, looking for new friends 25-40 any race/colour, poss relationship with right person. Varied interests, walking, photog, music to name some. Photo assures reply. Box 329.

**MANSFIELD AREA**, males under mid-30's wanted for friendship (poss relationship if photo incl). Will set up gay group meetings (monthly) if enough reply. Box 330.

**TWENTY FIVE** year old Bradgate Park, Fosse Park, Great Central Way, Cannon cinema, Grimsby fisheries enthusiast. Seeks similar guy to share this town with. Box 331.

**MAPPERLEY**: is there a genuine young man willing to share my beautiful house with me? He should be non-smoking, considerate, smooth and adaptable. Replies with photo please. Box 332.

## HELPLINES

**BIRMINGHAM BLACK LESBIAN & GAY GROUP**, 021-622-7351 for details.

**COVENTRY FRIEND**, Mon, Wed, Fri, 7.30-9.30pm. 0203-714199.

**COVENTRY LESBIAN LINE**, Wed, 7.30-9.30pm. 0203-717166.

**COVENTRY MESMEN**, 0203-224090.

**DERBY BODY POSITIVE**, Tue 10.30am-1.30pm, Thur 11.30am-4pm, 0332-292129.

**DERBY FRIEND**, Wed, 7-9.45pm. 0332-49333.

**DERBY LESBIAN LINE**, Wed, 7-9pm. 0332-41411.

**DERBY AIDSLINE**, Mon & Thur, 7-9pm, & Thur, 2-4pm. 0800-622738.

**JEWISH LESBIAN & GAY HELPLINE**, Mon & Thur, 7-10pm. 071-706-3123.

**LEICESTER LESBIAN/GAYLINE**, Mon-Fri, 7.30-10.30pm. 0533-550667.

**LEICESTERSHIRE AIDS SUPPORT SERVICES**, Mon-Fri, 9.30am-5pm. 0533-559995.

**LINCOLNSHIRE AIDS VOLUNTARY GROUP**, Mon, Wed, Fri, 9am-9pm, & Tues, Thur, 9am-5.30pm. 0522-513999.

**LINCOLNSHIRE LESBIAN & GAY SWITCHBOARD**, Thur & Sun, 7-10pm. 0522-535553.

**MANSFIELD & ASHFIELD POSITIVE SUPPORT**, 0623-26254.

**NATIONAL BISEXUAL PHONELINE**, Tue & Wed, 7.30-9.30pm. 081-569-7500.

**NORTH STAFFS LESBIAN & GAY SWITCHBOARD**, Mon, Wed, Fri 8-10pm, Sun 1-3pm, 0782-266998.

**NORTHANTS GAYLINE**, Tue 6.30-9.30pm, 0604-39722.

**NORTHANTS LESBIAN LINE**, Tue 7-9.30pm, 0604-39723.

**NOTTINGHAM LESBIAN & GAY SWITCHBOARD**, Mon-Fri, 7-10pm. 0602-411454.

**NOTTINGHAM LESBIAN LINE**, Mon & Wed, 7-9pm. 0602-410652.

**NOTTINGHAM FRIEND**, Tue, 7-10pm, 0602-474717.

**NOTTINGHAM UNIVERSITY LESBIAN & GAYLINE**, termtime Mon, 8-10pm. 0602-514999, internal 4999.

**SHEFFIELD AIDS LINE**, Mon-Thur, 7-10pm. 0800-844334.

**SHEFFIELD GAYPHONE**, Mon-Wed, 7.30-9.30pm, 0742-588199.

**SHEFFIELD LESBIAN LINE**, Thur, 7-10pm, 0742-581238.

**WELLINGBOROUGH GAYLINE**, Thur, 6.30-9.30pm, 0933-223591.

**IN DISTRESS**, Lesbian & Gay Mental Health Group, 021-622-6589.

**NOTT'M**, attractive clean shaven guy, good physique, 42, seeks friendship or loving relationship with smooth, stylish, or Levi guy, under 35. ALA with sae. Box 333.

## THE GAY & LESBIAN HUMANIST ASSOCIATION (GALHA)

An organisation for the non-religious promoting a rational Humanist approach to sexuality and gay/lesbian rights as human rights.

GALHA has: national/international membership, arranges meetings, socials and weekend events, publishes a quality magazine free to members, and provides officiants for non-religious ceremonies.

Leaflet and membership form from: GALHA (Ot), 34 Spring Lane, Kenilworth, Warks, CV8 2HB. (Tel/fax 0926 58450)

## WHILE YOU'RE CRUISING THE DUNES - WHO'S CRUISING YOUR HOUSE?

Protect you and your collection with an expertly fitted burglar or combined fire/burglar alarm system.

For a free survey and competitive quote phone

**"AMBER SYSTEMS"**  
0773 - 856206



# classified...classified...classified...classified...

FOXHUNTING young country man seeks country gentleman to help further his sporting career. Box 334.

LEICS/E MIDS, fit guy, 33, seeks others 21-34 for fun and a good time. Photo/phone apprec. Box 335.

NOTT'M, 26, tall, intelligent, straight acting, adventurous and not in a hurry. No time limit, no time wasted, no time wasters. Can't wait to see you. Box 336.

NOTTS, 27, medium build, 5'8", dark hair, blue eyes. Told good looking. Looking for friendship poss 1-1 with good looking guys 21-33. Non-smoker pref. Photo apprec. Box 337.

B'COTE LA/KEVIN RD. Cnr. (aft. 9/5/94), yg/gen. Lycra cyclist, leather-clad biker/red machine. We glanced B4 U d'pearred. Make contact for fun/longterm f'ship/tlc (no sm). Box 338.

JOHN FROM NOTTS, 42, eyes blue-grey, 6', medium build, seeking 20-40, poss 1-1. Hobbies music 60s-70s, rly models, stamp collecting, airfix models. Must have car. 0602-252988.

LEICS/E MIDS, good looking, passive guy, young 41, into leather, denim, seeks dominant guy any age for tuition, sm, bd. ALA. Box 340.

NOTT'M GAY GUY, 30, tall, brown hair and eyes, likes clubbing, pubbing, eating in/out. Has gsoh and likes big active men. ALA. Photo if poss. Box 341.

LINCS, 26, 6', good looks. Style, a life!, passion and spirit offered and sought. The above essential, the rest negotiable. Box 342.

NOTTS GUY, seeks friendship and fun from local guy under 40. Into jocks and briefs. Personality more important than looks. Photo if poss, not essential. Box 343.

NOTT'M, 25, undergraduate, tall, very good looks. I'm sincere, intelligent, like theatre, cycling, scene. Wants similar for poss relationship. "New friends" welcome to write. Photocopied photo apprec. Box 344.

## ALTERNATIVE ACCOMMODATION ON THE ALGARVE COAST

*Sea view and scenery,  
excellent access and  
facilities in traditional  
Portuguese community.  
B&B £10.*

Phone for more details.  
010 - 351 - 89 - 706925

## HYSON GREEN WHOLEFOODS

Mon-Sat 9.30-6  
(Thurs/Fri till late)

WE SELL  
ENVIRONMENTALLY SAFE  
& CRUELTY FREE  
CLEANERS AND  
TOILETRIES, A GOOD  
SELECTION OF HERBS &  
SPICES, FRESH BREAD AND  
A WIDE SELECTION OF  
SNACK FOODS.  
**ORDERS TAKEN**

72 RADFORD ROAD  
NOTTINGHAM 0602 702056

## OUTPOST!

You can have OUTRIGHT  
delivered by first class post  
in a plain sealed envelope.  
Especially useful for  
keeping up with the  
classifieds.

Send £5 cheque/postal order  
for 12 issues to OUTRIGHT,  
Box 4, West PDO,  
Nottingham, NG7 2DJ.

## MIXED PERSONAL

HEALTHY SPERM DONOR wanted by lesbian couple. No parental involvement preferred. White/European please. ALA. Box 528.

LESBIAN COUPLE in stable relationship seek sperm donor, involvement welcome, photo apprec. Box 529.

NOTT'M white, Jewish lesbian seeks other people to consider parenthood together. respect for young people very important. Write with your hopes, fears and ideas! Box 530.

BISEXUAL MALE, 36, longs to end 10 year search for bisexual female/partner/friend for mutual support, walks, talks, reading. Loves music, outdoors, cinema, wappy humour. Box 282.

HINDU MAHER seeks contact with maher girls for beneficial arrangements. Box 283.

## WOMENS PERSONAL

FEMALE GAY 40s wishes to meet same honest reliable romantic non-smoker. ALA. Derby/Sheffield. Genuine letters please. No unstable or unsure or insecure. Box 509.

EXTREMELY DISILLUSIONED gay woman in need of tlc-romance. Make my life worth living. Non-smoker. Animal lover. Genuine, sincere, non-scene, gsoh. Photo, any age/area. Box 510.

SLEAZY WOMAN seeks salacious letters from hot wimmin. Lets exchange fantasies. Box 511.

LESBIAN COUPLE, 33 + 39 wish to meet other lesbian couples/lesbian singles for friendship. South Lincs area. Box 512.

EASY GOING Nott'm lesbian, looking for similar, to holiday in Lesbos/Greek Islands. I like sun, sea, relaxing (perhaps some culture). Flexible dates, accomm etc. Let's meet to discuss. Box 513.

HUMBERSIDE. Young gay woman,

attractive, feminine, gsoh, sincere and caring. Seeks similar for friendship poss relationship and to share fun times! No butches. Send photo please. Box 514.

PROFESSIONAL LADY would like to meet other professional ladies E Midlands area, 36-40ish. Warm hearted conversationist with a verve for life would be a bonus. Box 515.

NOTTS, attractive, sincere, mid-30s, seeks women for fun & laughter & friendship poss 1-1. Aged 25-40. No butch or bi's. Box 516.

BRONWYN: April 23rd -May 1st. The best week of my life. My heart is yours. I love you eternally. Paradise was beautiful. Next stop Paris!! Love Hadley XX. Box 517.

LESBIAN COUPLE with children still looking for friends/pen pals. Fed up with the same old routine. Age 28/29 please drop us a line. ALA. Box 518.

NOTT'M lesbian mother, young 44, on her own, seeks 1-1 with similar circumstances. Sick of being hurt. Various interests with genuineness, sincerity, honesty. Smoker. No bi's need apply. Box 519.

CUDDLY easy going lesbian seeks easy going lesbian with vgsoh. I am 47, like going out, stopping in. Loves all kinds of music. Looking for 1-1. Photo if poss. ALA. Box 520.

WOULD THE GORGEOUS blonde opening night Boulevard womens disco please get in touch. Remember me? Black hair. We couldn't stop looking at each other. Please write. Lincs. Box 521.

FUSSY NOTTS VIRGIN seeks enlightenment by intelligent professional with soh, aged late 20s to early 30s. Apply with cv, refs, medical history and photo! Box 522.

NOTTS LESBIAN, 35, loves walking, animals, music. Non-scene. Seeks o,der loving affectionate lesbian who looks good in a tie and fedora! Me, affectionate, disillusioned and single. Box 523.

ME, 49, intelligent, alternative, humorous, professional. mother with no dependents. Looking for special relationship to discuss, share, have fun. Lincs based, willing to travel. Box 524.

K. Put them away you hussy, you'll

### REPLYING TO AN AD?

Don't forget two 1st class stamps for each reply. See top of page 10.

**HOW TO PLACE AN AD.** Complete the form below. Write clearly please, and punctuate! Keep ads short and sweet: max 27 words. OUTRIGHT may refuse or amend ads. One free ad per issue. Enhance your ad in display for £4.

### CLASSIFIED ADS

Complete and return to Outright,  
PO Box 4, West PDO, Nottingham, NG7 2DJ.


Mens ... Womens ... Mixed ... Accommm ... Display ..... (£4 cheque/PO)

Name.....

Address.....

Post code.....

frighten the children. I love you. L. Box 525.

ARE YOU LOOKING for a friend, lover, soul mate, who's funny, honest, and good looking. Me too. Box 526.

NOTT'M LESBIAN, attractive, young 44, sincere, loving, gsoh, lots of tlc to give. Music, theatre, walking, cosy nights, seeks 1-1, non-smoker. No bi's. Genuine replies, ALA. Box 527.

## ACCOMMODATION

Advertise your accommodation wanted/offered using the classified ad form. Include your address/phone number.

Accommodation files are also kept by Switchboards in Nott'm, Derby and Leicester, and maybe elsewhere. See helpline panel.

HOUSE to share, Newark, close A1 & A46. Suit female in f/t employ. Pref non-smoker. £185 pcm + phone. 0636-702503.

EAST COAST, room to let, shared facs. Close beach. £25 pw + phone. Suit for Lincoln, Grimsby, Skegness. Parking & gdn. Must like dogs. Box 701.

LEICS. House share with designer, own room. Wash/w. TV. GCH. Phone. £160 pcm in advance + £100 deposit. N/s. Ashley 0533-838344.

GAY MALE to share 3 bed house newly dec. Quiet area, near shops. £40 pw inc bills + phone. Deposit req'd. Box 703.

LEICS. Single room for student/worker, September. All mod cons. N/s. Any race welcome. Meals supplied. Box 704.

NOTT'M GUY, 28, n/s, non-camp, quiet, considerate, honest, student soon to be unempl, seeks single room in Nott'm houseshare at reasonable rent. Deposit/refs avail. Box 705.

## COPY DATES

No. 51: 24th June

No. 52: 22nd July

No. 53: 26th August

**PUBLICATION DATES**  
2nd July, 30th July, 3rd Sept

cut here

cut here



# LADY DAY

A new biography of Billie Holiday by Donald Clarke, 'Wishing On The Moon' was published in April by Viking/Penguin. 'More than 30 years after her death', writes reviewer, Tilly McAuley in DIVA, 'it is astonishing that this is only the second independent attempt to explore Holiday's masochistic life. This was conveniently airbrushed out of the 1972 movie, 'Lady Sings The Blues'. Her most famous big-time lesbian friend was the actress Tallulah Bankhead, but, according to McAuley 'it is unclear whether they were lovers, although Bankhead was once thrown out of a nightclub because she was fawning all over Billie.'



'More than 30 years after her death', writes reviewer, Tilly McAuley in DIVA, 'it is astonishing that this is only the second independent attempt to explore Holiday's masochistic life. This was conveniently airbrushed out of the 1972 movie, 'Lady Sings The Blues'. Her most famous big-time lesbian friend was the actress Tallulah Bankhead, but, according to McAuley 'it is unclear whether they were lovers, although Bankhead was once thrown out of a nightclub because she was fawning all over Billie.'

## MEN'S SEXUAL HEALTH PROJECT (MSHP)

The Men's Sexual Health Project is an established community project working with gay and bisexual men around HIV and Sexual Health. The Project is now expanding. As a result we need two new workers:

### Project Worker (Black Gay Man)

Ref. MSW.1

to develop work with black gay and bisexual men around HIV/sexual health in a range of community settings, exempt under Section 5(2)(d) Race Relations Act and 7(2)(e) Sex Discrimination Act.

### Project Worker Ref. MSW.2

to continue and expand current work with gay and bisexual men in a range of community settings. Exempt under 7(2)(e) Sex Discrimination Act.

Applicants for either post should be gay or bisexual men with some knowledge of HIV/Sexual Health and experience of working with his communities.

Both posts are full time (37 1/2 hours per week), 3 year fixed term contract, responsible to the Leicester Lesbian and Gay Resources Centre.

**Salary £14,319-£15,288**

Application forms and job description from Andy Griffiths, Project Co-ordinator (0533) 541747.

*Closing date for completed applications, 5pm, Wednesday 29th June.*

## FAMILY FIRST LIMITED

require a

## FEMALE RESIDENT SUPPORT WORKER

**Salary £7,790**

(Plus rent-free accommodation in separate two-bedroom ground floor flat)

The Resident Support Worker will assist the Senior Housing Officer in ensuring that the accommodation for young mothers and babies at The Croft Hostel offers the appropriate level of support and enables residents to progress towards suitable move-on accommodation.

The Resident Support Worker will work 25 hours a week including some evenings, week-ends and Bank Holidays (times to be negotiated). The Resident Support Worker will be expected to be 'on call' between 5.00pm and 9.00am five nights a week.

Family First is actively working towards becoming an Equal Opportunities employer. The final appointment will be made on merit.

This post is exempted under Section 7(2)e of the Sex Discrimination Act 1975.

For details and an Application Form telephone (0602) 623906. Please note that c.v.'s will not be accepted.

All applications must be received by 5.00pm on Thursday 9th June 1994.

## Nottingham East Women's Aid

Womens Aid is an organisation run by women for women who have suffered emotional, physical or sexual abuse.

**We require a**

## WOMAN OUTREACH WORKER

Hours - 18 1/2 per week flexible

Salary - £15,459 Pro rata

The Outreach Worker will be based at the refuge and will be involved in all aspects of Women's Aid, working collectively with the support group and the Management Committee. Primarily the work involves giving support to women leaving the refuge and moving into permanent accommodation. Relevant experience is desired.

This post is exempt under the Sex Discrimination Act 1978 Section 7.2D

The closing date for application forms is the 10th June

Interviews will be held on the 5th July

For an application form please apply in writing to:  
Nottingham East Women's Aid,  
P.O. Box 173, Nottingham.  
(0602) 483794

Nottingham East Women's Aid is striving to be an Equal Opportunities Employer

## Advertise it in outright!

Whether it's a product, a service or a job, advertise it in outright! Our rates are low - and with a print run of four thousand copies a month we offer the most effective coverage for lesbians, gays and bisexuals in central England.