

# outright!

September 1995 Issue 65 for gays lesbians and bisexuals free

## FUNDAMENTALIST MENACE

An invited speaker from an Islamic fundamentalist group committed to executing homosexuals was the guest of a Nottingham Asian youth group at council-run premises last month. Hizb ut-Tahrir (HUT), who advocate the restoration of Islamic law, provided a speaker for the Shabbab Youth Group at Forest Fields Community Centre in Nottingham on the 20th August. 40 people were claimed to have attended the meeting.

### SUMMER LOVIN'



Gay boys and their friends stripped off to enjoy a hot night of Summer Lovin' at the GAI Project's beach party at the Kitsch Club, Nottingham in August. The project put on Summer Lovin' to spread the word about safer sex in the summer and raise money for local AIDS charities. The prize of a weekend in their honeymoon suite and free passes to all the clubs was kindly donated by Oscar's Guest House in Blackpool.

Hizb ut-Tahrir is currently engaged in a battle to win the minds of young Muslims across Britain and held a national rally in Trafalgar Square last month, despite protests from many organisations around the country. Their message is very clear. All discovered homosexuals face savage executions under Islamic law.

OUTRIGHT spoke to Wendy Edwards, Nottingham's Assistant Director of Community Services who said she was very concerned about the aims of this group and confirmed that no booking had been made in their name. The premises are run by Forest Fields Community Association, with 50% funding from Nottingham City Council. The only groups proscribed by the City Council under current policy are the National Front and the British National Party.



DYKE TV seizes control of the C4 airwaves for the first four Saturday nights in September. Fun, informative and upfront this scintillating mix of new commissions, feature film premieres, short films and documentaries is the world's first series to be devoted to lesbians.

### General Practice Vocational Training Vacancy

Available late 1995/early 1996

We are a four doctor Leicester inner City Practice

A few things about us:

- \* Friendly team which is committed to developing quality care provision
- \* Large range of special clinics
- \* All top targets reached
- \* Close working relationship with Community Services
- \* High commitment to HIV care provision and the development of community HIV services
- \* Fully computerized (virtually paperless)
- \* New main premises opening December 1995

**For further details contact Jane Noble  
(Practice Administrator) on 0116 255 8438**

### THE HUMANIST CHALLENGE

*"Humanist organisations agree with the principle that lesbian and gay rights are human rights. The basic opportunity to fulfil one's potential and to seek love and security should be available to everyone"* —

**British Humanist Association Briefing for Teachers.**

The humanist movement, of which the Gay and Lesbian Humanist Association (GALHA) is a part, promotes an enlightened, liberating and rational approach to sexuality. It challenges the repressive Judeo-Christian teaching on sexual morality which gives rise to much of the prejudice and discrimination suffered by lesbians and gays.

You can help promote humanist principles as well as gay and lesbian rights by joining GALHA. GALHA has members all over the UK and abroad. It keeps them in touch via a lively, high quality magazine and gives them the opportunity to get involved in campaigns via its Postal Action Scheme.

It arranges meetings, socials, weekend events, and secular humanist ceremonies (wedding, naming and funeral).

Leaflet and membership form from: GALHA (GT), 34, Spring Lane, Kenilworth, Warks, CV8 2HB. Tel/fax: 01926 58450.



## ▽ News in Brief

▽ **STRIDE (Safe Travel for Women)** are launching a 'Safety Check Kit' in September. The group's aim is that 'women and girls can feel safe to go out and about freely anytime, anywhere'. The launch of the Kit is on Tuesday 26th September at the Friends Meeting House in Clarendon Street, Nottingham from 10-12.30pm. Booking via the Womens Centre, 30 Chaucer Street.

▽ **The National Helpline Conference** is being held in Bournemouth this year. The event takes place at the Melford Hotel from 10th to 12th November. More details from PO Box 316, Bournemouth, BH1 4HL or phone 01202 318822.

▽ **Stonewall Breaks** has a 5 night houseparty in Brittany from 21st to 26th Oct for gay/bi men, twin bedded rooms, full board, workshops, French cooking, from £85-120 excl travel. Info from Richard Frost 0115 950 6487.

▽ **The Edward Carpenter Community** is planning a 'personal growth' holiday for gay and bisexual men at Manorbier near Tenby in Wales from 21st to 28th December. The venue is wheelchair accessible. For more details send 25p stamp address letter to Beano, **Outright!**, PO Box 4, West PDO, Nottingham NG7 2DJ or John Hoggett 01734 598982.

▽ **East Mercia MSC** has a new HQ at the Pineapple Inn, Leicester. Members meet 2nd & 4th Saturday each month. More details from 01332 361056.

## TROLLWATCH

News has come to our ears that during this hot spell, Lilly Law has been out and about at a certain North Notts. trolling spot keeping a beady eye on the comings and goings, even going as far as to sneak through the undergrowth hoping to pounce on their targets.

Meanwhile, Peterborough's boys in blue are being kept busy patrolling the river embankment cruising area and have already made arrests.

And finally, the attendant at the Theatre Square subway cottage in Nottingham has a nice line in pretending not to be in his closet, sorry, his office and leaves the door open just enough so he can watch proceedings. Maybe he's just a willy-watcher.

A reader from Leicester has contacted Outright! to voice concern over the police presence in the city's Abbey Park recreation ground and in the streets surrounding some of the city's gay venues. Known as 'The Trail' within the gay community, the canal side of the park known as St. Margaret's Pastures is one of Leicester's major cruising areas.


A recent article in the Leicester Mercury reports that police officers on mountain bikes are patrolling the park in a bid to eliminate crime, vandalism, violent attacks and racial abuse. The reader also alleges that the police have been patrolling around the Pineapple pub and circling the streets around the Leicester Place nightclub.

## COUNCIL MOVES

In the wake of the successful motion on lesbian gay and bisexual rights passed at the July meeting of Notts County Council, the LGB Forum for les/bi/gay groups in Nottingham met recently to discuss a strategy for moving the Council forward in its own employment and service provision for les/bi/gay people.

Employment issues include harassment and recruitment, and partnership rights in pensions and leave entitlement. In education, homophobic harassment of staff and pupils and information in the curriculum for young les/bi/gay pupils are matters raised. In social services the funding of community groups and discrimination in fostering and adoption procedures would need to be addressed.

The Forum meeting made arrangements for a formal meeting with Councilors and officials at County Hall on 6th September. A spokesperson for the Forum said "With the County Council recently passing a total equalities motion the prospect of working constructively with our local authority has never been so good."



**Leicester Womens Coffee Bar**

EVERY WEDNESDAY LUNCH-TIME FROM  
12PM - 2PM 43 KING STREET  
YUMMY FOOD AND GREAT COMPANY!  
Lesbian & Gay Line - 0533 550667

**Have a problem?  
Need to talk?  
One-to-one counselling  
Private & Confidential  
Please call Peter AEB/Cert  
01332 755098**

## USE YOUR BUYING POWER

**HIZIKI**

Buying from countries and companies with a commitment to social justice - Hiziki has the widest range of wholefoods, fresh bread, take-away snacks, organic fruit & veg, vegetarian convenience foods, and organic wine & beer in Nottingham. We also stock many natural remedies, cruelty-free toiletries & environment friendly cleaning products.

5% discount for UB40s, OAPs & students on Wed/Thurs.

Hiziki is a workers' co-operative  
15 GOOSEGATE, HOCKLEY  
NOTTINGHAM

**FOR POSITIVE CHANGE**

**• give me a •  
- BREAK -**

exclusive 1 week holiday for the GIRLS in the Algarve departing every Sat/Sun from 14/10 prices from £299 Gatwick, £319 B'ham/Man limited seats so hurry! Phone for more info plus 1996 Carnivals now available  
Gay exclusive holidays  
worldwide flights + accommodation  
sunshine holidays + city shortbreaks  
ferry + channel crossing + more!

**0116 - 291 5853**

mon-fri 8:00 - 8:00 . sat-sun 9:00 - 5:30

**Welcome abroad direct**

121 Kirby Road, Western Park Parade Leicester LE3 6BE  
IATA . TGTG . T0256

### INFORMATION

around safer sex, HIV/AIDS and other sexually transmitted diseases

### ADVICE & SUPPORT

on all sexual health issues, physical and emotional

Community Action  
**Ash**  
on Sexual Health

### TRAINING

around sexual health and sexuality, anti-homophobia etc.

### LEAFLETS & POSTERS

and other resources

### FREE CONDOMS

also water-based lubricants and dental dams

Available free and confidentially to everyone, regardless of age, sexuality, colour, race, religion, disability or HIV status.

### CONTACT:

Richard Marriott  
4 Rose Hill, Chesterfield  
S40 1LW Tel: (0246) 559431

CASH is part of  
Peak Health,  
North Derbyshire  
Health Authority's  
Health Promotion  
Programme.



## ▽ News in Brief

### ▽ Northants Lesbian & Gay

**Alliance** is looking for volunteers to write letters, stuff envelopes, make coffee, do research, deliver leaflets etc in preparation for the opening of their new community centre. It is hoped that the building, at 61 Derngate, Northampton, will be opening in September. More info from Northants L&G Alliance, CVS, 13 Hazlewood Road, Northampton or phone 01604 416477.

▽ **The third national meeting** of black and disabled lesbian and gay members of Unison takes place in Manchester on 22nd and 23rd Sept. The networks are open to members who identify as black or disabled. Resolutions passed at the meeting go forward to the national lesbian & gay conference of the union. More info: Carola Towle, Unison, Mabledon Place, London WC1H 9AJ.

### ▽ Notts Unison County No 1

**Branch** will be sending 7 delegates to the 3rd national lesbian and gay conference in Brighton in December. A selection meeting takes place at 6pm at the Central Library, Angel Row, Nott'm on Wednesday 13th September.

▽ **Terry Sanderson**, gay author, reviewer, counsellor and agony aunt is the main speaker at the Gay and Lesbian Humanist association annual weekend conference in Whitby. GALHA is celebrating its 16th anniversary this year. The annual conference is being held at the Sandbeck Hotel from 8th -11th Sept. More info from GALHA on 0926 58450.

▽ **Pink Chalk**, the group for teachers and others working in education in the Midlands and South Yorkshire, meets Saturday 23rd September at 2pm at the ICC, 61b Mansfield Rd, Nottingham. More info 0115 9585814.

### ▽ Loughborough Womens Bar

welcomes all women on the 2nd and 4th Monday every month, 8.30pm onwards at the Labour Club, Fennel Street, Loughboro'. More info 01509 235610.

▽ **Nottingham Metropolitan Community Church** has the following meetings and preachers during next month: 3rd Sept. Mitch (Corby) MCC Doncaster; 10th Sept. Mobile, voluntary pastor; 17th Sept. Mobile, voluntary pastor; 24th Sept. Bring your own worship; 1st Oct. James Chapman, Mansfield Baptist Church. More info. from Wendy Snell or Anne 0115 9750031.

▽ **Caeia March** reads from her latest novel, Friday 13th Sept., 7pm, 45 King St. Leicester. All women welcome.

▽ **Otterpool Promenade**, a Liverpool cruising ground, expects to see many arrests shortly as Merseyside police step up their raids on the area, this despite the initiatives taken recently to improve

relations between the community and the police.

▽ **First Out**, the Young LGB Group, meets, Thursdays, 7.30pm, 45 King St. New friends, discussions, outings, etc. for under 21's. More information from 0116 255 0667.

## COMIC CREATOR VISITS NOTTINGHAM

The American creator of gay comic character 'Desert Peach', Donna Barr visits Nottingham on Saturday 7th October to promote her latest character and sign copies of her comics. She will be signing at Page 45 Comic Shop, 9 Market Street Nottingham, 0115 9508045, alongside her good friend Roberta Gregory, creator of 'Naughty Bits' and contributor to -amongst other titles - 'Gay Comics' and 'Dyke's Delight'.

## LEICESTER'S POLICE CONSULTATION

Over the last couple of years Leicester's lesbian, gay and bisexual communities' representatives have been meeting in a joint forum with Leicester Police on a regular basis to discuss areas of concern in the policing of our communities. Their Progress Review is now available, copies from Andy Griffiths at 45 King Street Leicester (0116) 254 1747 Outright will cover their progress in its October issue.

## THE MEN'S SEXUAL HEALTH PROJECT

45, King Street, Leicester

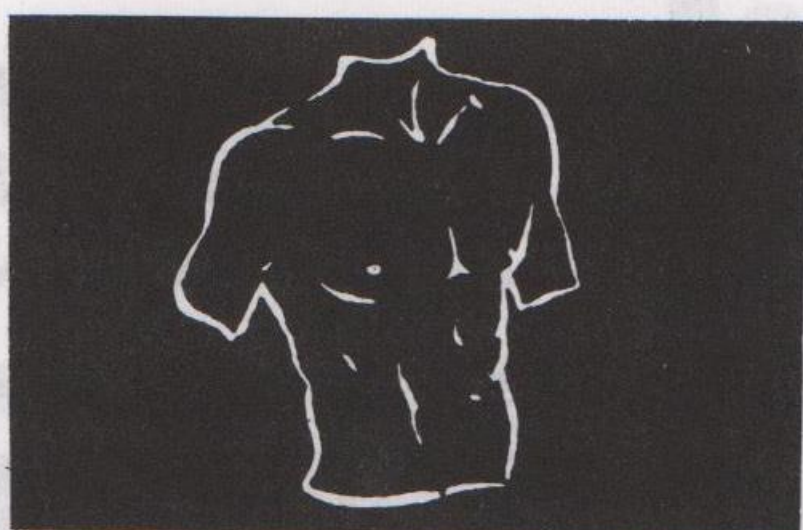
ALL OUR SERVICES ARE FREE AND CONFIDENTIAL YOU DON'T EVEN HAVE TO GIVE YOUR NAME

Available free to all men who have sex with men regardless of age, sexuality, race, religion, disability, or antibody status.

### TRADE

is a group of gay and bisexual men from a range of backgrounds with one thing in common - we all want to do something about the growing HIV epidemic.

FOR THE DATE OF OUR NEXT MEETING AT 45 KING STREET, LEICESTER, PHONE ANDY.



If you would like to find out more about us, or are interested in getting involved, why not come along.

We are particularly keen to recruit volunteers from Black communities who are currently under-represented in our group.

For more information phone Andy:  
0116 254 1747 (office hours)

## FREE CONDOM DROP IN

Opening times

Every Thursday 11.30am-2.30pm

Every Friday 11.30am-2.30pm

Second Saturday each month 12.00am-3.00pm

(No appointment necessary)

If you have difficulties visiting during these times ring 0116 254 1747 for an appointment free.... (and easy)

**ABSOLUTELY FREE!**

\*A choice of gay safe condoms \*Water based lubricants \*Dental dams, latex gloves \*Information, counselling and support on HIV/AIDS, sexuality, relationships, HIV testing, safer sex or any concerns about sexual health \*Leaflets, safer sex videos, posters etc.

## METRO CINEMA

Green Lane Derby: box office (01332) 340170

### BUTTERFLY KISS (18)

Dir: Michael Winterbottom/  
UK/1995/85 mins.

'Thelma and Louise go to Lancashire' its not, but it certainly is one of the most original British films for a long time. Part lesbian love story, part road movie, part black comedy, the film begins when Eunice, played by Amanda Plummer is wandering the motorways of Northern England searching service stations for a lost lover. Her confused state can turn in an instant to violence, but she captures the heart of Miriam, drudging behind the counter in one of the service stations, who becomes her lover and her protectress. Even when that protection involves aiding Eunice in murder, Miriam is determined at all cost to save her beloved sinner.

Brilliantly scripted and directed, Winterbottom's feature debut exudes confidence and a distinctive directorial touch. Plummer gives a completely wonderful off the wall performance as Eunice but it's Saskia Reeves as the quiet Miriam who gradually becomes the most complex and weird character. **Fri. 29th September - Thur. 5th Oct. Fri. & Sat. 6.30pm, Sun. at 6pm, Tue-Thur. at 8.30pm.**





## ▽ News in Brief

▽ **A Lesbian Herstory Course** begins on Tuesday 19th Sept for 12 Tuesdays, 7-9pm, at the Womens Centre, 30 Chaucer St, Nottingham. The cost is £39.60/£14.40 over 65/£5 unwaged. A creche, large print and loop system are provided. Bookings must be received by Pauline Dorey at the Womens Centre by 13th Sept (0115 924 0041). Other courses available include sign language, counselling skills, Asian women's herstory, cooking on a low budget and many more.

▽ **Michelle Mason** is a student in her final year at University. As a lesbian and a Christian her dissertation title is 'Does the Bible provide any basis for the judgement and condemnation of homosexuality within the Christian faith?'. If readers have any views, send them to 'Faith' c/o Outright!, PO Box 4, West PDO, Nottingham, NG7 2DJ.

▽ **Circle Dance.** Friday 22nd September sees a Circle Dance Party at 'The Gym', Queens Walk Community Centre, The Meadows, Nott'm at 7.30pm. £4-£5 waged, £3 unwaged, £2 children.

▽ **Triangle Productions**, who gave us 'Lesbian Kama Sutra' on video has been refused advertising space by the Daily Mirror and Daily Star. Said Siobhan O'Melia, Director, "When there is an opportunity to show real lesbian sex, they feel threatened. However, they are prepared to advertise tacky lesbian sex and continue to trivialize lesbian identity."

## SEPTEMBER WALKS

**Weekenders** walk approx 8 miles from Darley Bridge (OS624270) on B5057 near Matlock at 10.45am on Sunday 3rd. More details from Sheffield Friend Fri 7.30-9.39pm 0114 275 8880.

**Transpennine Gay Outdoor Club** are holding a camping and walking weekend in the Llangollen area Fri 8th to Sun 10th. More info from Pete 0161 431 9255.

**Transpennine GOC** 10 mile walk from Hope railway station, 10.30am on Sunday 10th at 10.30am.

**Sheffield Hiking Dykes** meet Sunday 10th at Hawkhill Road car park (GR216767) at 10.30am, 11 miles, Eyam, Froggatt, Stoke Ford, Sir William Hill. Info, Deena 0114 268 6409. Lesbians only.

**Leicester Hiking Dykes** meet 45 King St at 10.30am on Sunday 17th. Info from Helen 0116 291 2128 or Jill 0116 254 7412

**Nottingham Hiking Dykes** meet at Tideswell car park (GR155742) at 10.45am on Sunday 17th, 8 miles, incl Millers Dale and Cheedale. More info from Lesbian Line (see helpline panel).

**East Midlands GOC** meet 11am Sunday 17th for a walk at Shipley Park. More info from Nick 0116 281 1138.

**Pink Pathfinders**, 6 miles from Thorpe car park off A515 on Sunday 24th at 10.45am. Info from Bob 0115 967 8134.

## OVER 26?

A new social group has set up in Nottingham for gay and bisexual men over 26. September events are a discussion on 'homosexuality-born or made', 8pm, 13th at the Health Shop; bowling on the 18th (meet at Admiral Duncan 7.45pm); a social event at the Admiral Duncan on the 25th, 8pm. More info from Colin (0115 958 5075) or write to 'Over 26 Social Group' c/o The Health Shop, Broad St, Nottingham.

## BLACKMAIL

The crime of blackmail and the experiences of lesbians, gays and bisexuals is being researched by a lecturer in law. David Ormerod at Nottingham University is seeking help on a few specific issues such as the impact of HIV/Aids on the incidence of blackmail; and whether the police are supportive when reporting cases of blackmail. More information about this in a later edition of outright!.

## DERBY AIDSLINE

Worried/confused about HIV/AIDS?

For confidential advice and information, phone FREE on Derby Aidsline

0800 - 622738

Mon & Thur 7 - 9pm  
Thurs 2 - 4pm

FREE AND CONFIDENTIAL

# HIV TESTING



The Health Shop  
Broad Street,  
Nottingham  
0115 947 5414

ALSO FREE CONDOMS,  
LUBE AND  
HEP B VACCINATION

ADMISSION:  
£3.00  
on the door  
£2.00  
with flyer

**STARTS 5th SEPT**

CARRY ON CAMPING!  
at Nottingham's  
Newest Weekly  
Gay & Lesbian Night!

DRESS CODE:  
dress to amuse!  
jeans and  
trainers allowed!

AFTER DARK NIGHT CLUB  
PRESENTS.....  
PHILPHY PHIL'S PINK  
POODLE PARLOUR!  
EVERY TUESDAY NIGHT  
FROM 10pm 'TIL 2am!

GARAGE / HOUSE,  
Latest Chart/Dance &  
Euro and 80's & 90's  
HIGH ENERGY!

AFTER DARK  
NIGHT CLUB,  
11, Station St.,  
Nottingham  
(Side Street  
to the  
Train  
Station)

# mushroom

B · O · O · K · S · H · O · P

Mushroom stock gay &  
lesbian magazines  
Gay Times, Diva,  
Deneuve, Attitude,  
Rouge, Out, Scotsgay,  
Bi-Frost

New in  
**'TANGLED  
SHEETS'**

Stories and poems of lesbian lust,  
Paperback, £7.99.

10 Heathcote St, Nottingham,  
NG1 3AA. 0115 958 2506

**anvil press**  
print & design

- \* Leaflets/Flyers
- \* Brochures
- \* Newsletters
- \* Business Stationery
- \* Posters
- \* Booklets
- \* Stickers
- \* Carbonless and more

Tel: 01332 298213



# AND THEN THERE WERE FOUR

Take That at Manchester Arena, 14th August 1995.

Photo: Gay Times

In an audience consisting mainly of over-excited little girls (and their mothers), my friend and I felt a little conspicuous. After all, how many dykes do you know who admit to liking Take That?



Princess Di meets Take That

However we were as excited as anyone else when the scantily-clad Fab 4 appeared on stage by a variety of means (lowered from the roof, borne on a litter) and launched into that camp classic 'Relight my fire'. Then, in an interesting reversal of custom, they actually put on some clothes on stage to sing 'Sunday to Saturday live'. They carried on the costume and scenery changes for each song, almost giving the impression of a series of videos rather than a live concert.

Throughout there was cheeky (but not too rude) banter with the audience and later there was a pause to explain that, despite Robbie's recent departure, they are not splitting up and will not be replacing him. I can't tell you the finale as we had to leave early to catch the last (not very late) train home. Oh well, that's privatization for you I suppose.

Morag Christie

## Outburst!

Dear Outright!

With regard to the letter from Messrs Hill and Spencer last month about Pride, The OUT HOUSE Project has decided to ensure no-smoking on all coaches in 1996, with stops for smoking provided.

We accept that there is always room for improvement, and have attempted to take up suggestions, but we are all volunteers and not paid workers. If Mr Hill and Mr Spencer still consider that OUT HOUSE is not doing enough in specific areas, we would welcome positive contributions to benefit our community. Why not try being stewards yourselves next year?

Paul Amann, Secretary

## Outburst!

Dear Outright!,

I am writing in response to "Better Dead Than Gay", the C4 programme last month on Simon Harvey, the young Christian who killed himself, unable to come to terms with his sexuality. The attitudes and views of Christians in the programme were presented as a Christian response to gay and lesbian sexuality and lifestyle. But many Christians do not hold such views including of course gay and lesbian Christians. The prejudice in the churches is challenged by members of the churches as well as being challenged from outside. To our shame, Simon Harvey couldn't reconcile his Christianity with his gayness, and seemed only to have heard Christian condemnation of his sexuality. Consequently he was unable to reconcile being gay with being Christian. Both mattered to him. Loading people inadvertently, especially young people, with that kind of fear and guilt is wrong and can never be justified in an authentically Christian context.

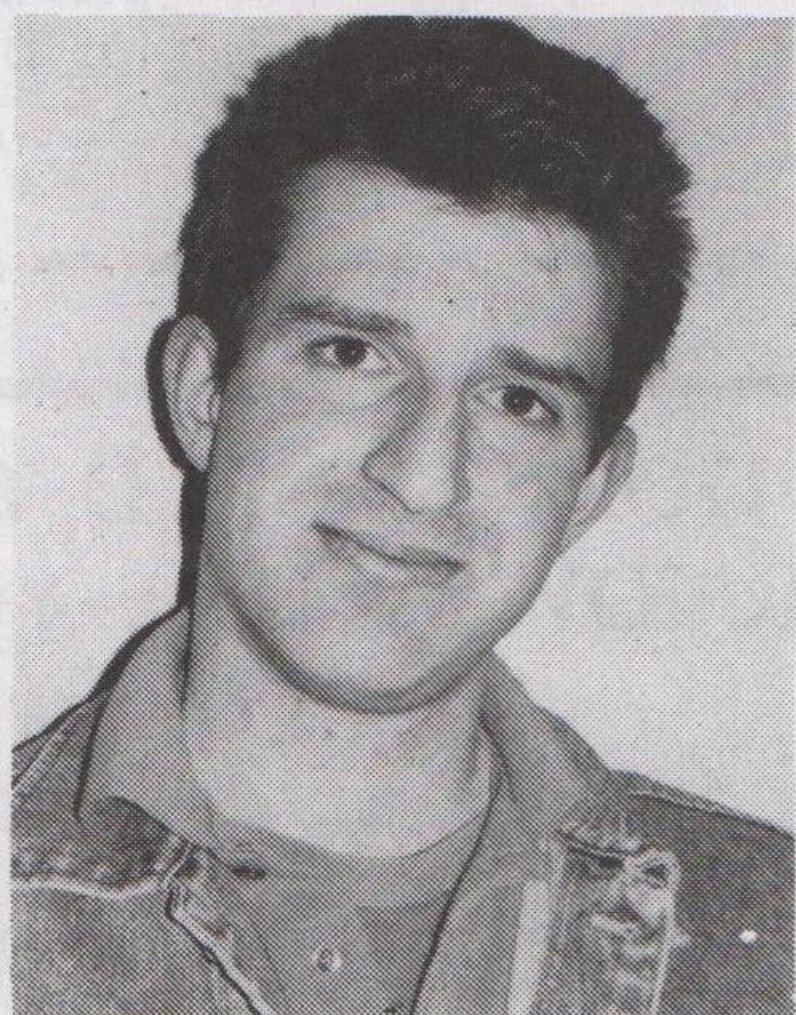
Yours sincerely, Revd. Margaret Morris, Diocese of Leicester's Chaplain for People Affected by HIV.

# wel fair

The Nottinghamshire Lesbian, Gay, Bisexual  
Advice and Advocacy Project

P.O. Box 10, Nottingham, NG4 3EL.

*offering free and confidential advice and advocacy  
on social security, housing and employment law*



A welfair advisor

## Could You Be Better Off?

### Home owners who are working.

If you own your own home and you have a partner living with you, and they are in receipt of Income Support or on a low income, you are able to obtain Housing Benefit for them, which they would pay you in the form of rent (lesbian and gay relationships are not recognised as valid relationships with the result that partners can charge their partners rent for living with them and have it paid by the local authority).

You may charge anything from £30 to £60 per week for someone who lives in your house, £30-45 for the exclusive use of one room and up to £60 for two rooms, depending on the area, and the shared use of the rest of the house.

### Home owners who are on Income Support.

If you are, and a partner, are on Income Support, you are able to charge them board and lodging which means that you are providing both accommodation and meals. (Unfortunately if they were simply termed a 'lodger', you would only be allowed to keep the first £4 of however much you charged. However, by accommodating your partner as a 'boarder' the rules are different and you are able to keep the first £20 of what you charge for both meals and rent plus half of the rest.) For example, one way of charging board, and satisfying the regulations, is to provide for breakfast only, for which you may charge £2 per week on top of the weekly charge of £20 rent, totalling £22. You will be allowed to keep the first £20 plus £1. The DSS will take the other £1 into account as your income.

Further information can be obtained by phoning welfair.

wel fair line 0115 940 3940\*

\*calls charged at standard BT rates

wel fair is an initiative from The OUT HOUSE Project  
wel fair is financially supported by Notts County Council & Nottingham Health Authority



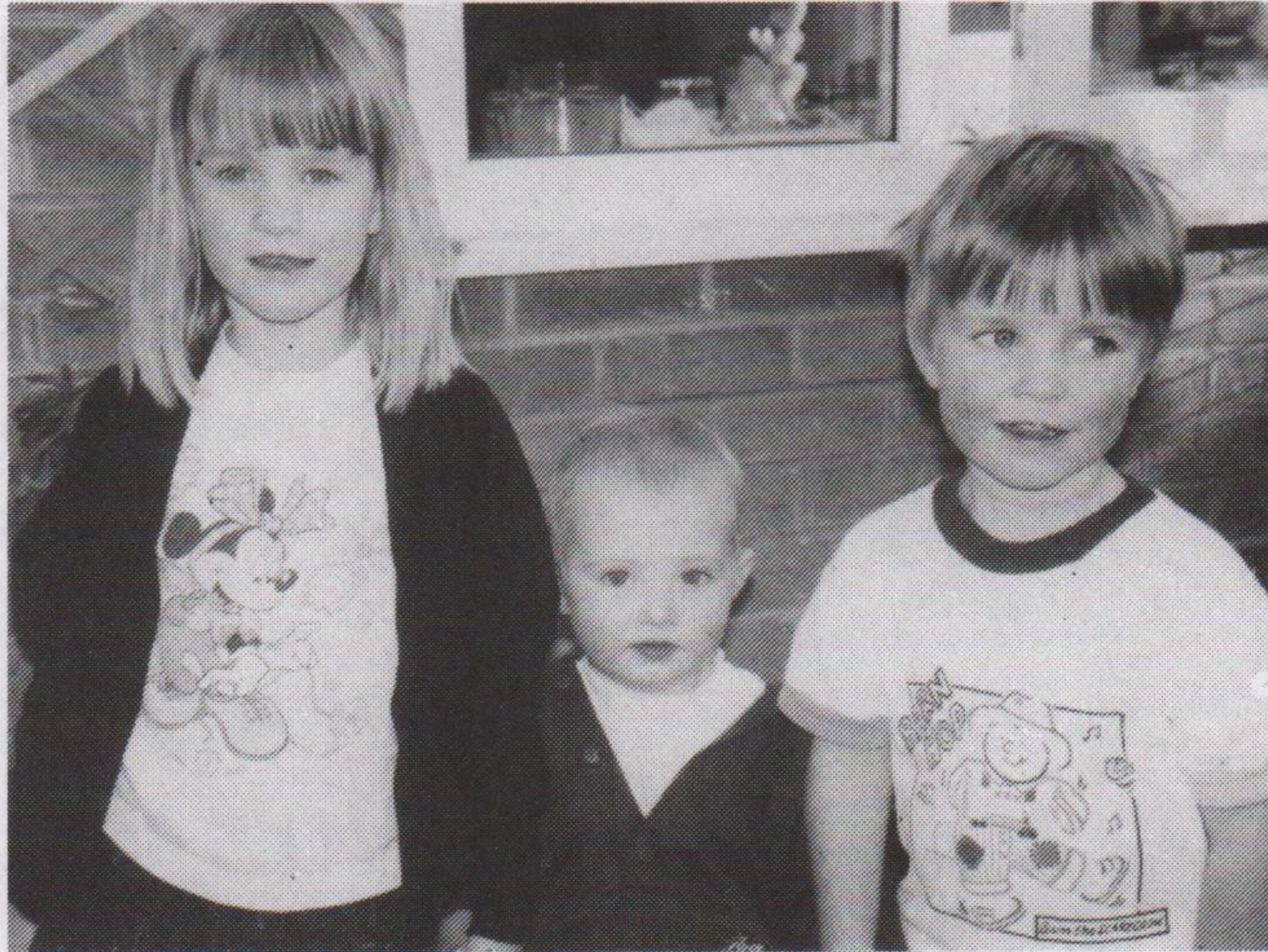
# Sisters are doing it for themselves...

Back in 1979 a group of lesbians were offered some interest free capital from wealthy gays and lesbians living in London. Several women in the group also put in substantial amounts of money. This enabled them to buy their first house in Nottingham and was the beginning of **Morrigan Housing Co-op**.

From the outset the co-op was a lesbian co-op in all but name. "Although we hadn't gone public about it, the Housing Department knew we were a lesbian co-op," said Grew the Company Secretary, and by the mid 1980's they were securing mortgages from the City Council to expand. Morrigan's expertise has been recognised by larger housing associations and they now help new fledgling co-ops get off the ground.

In the past the organisation was run more informally very much on goodwill but today Morrigan have to operate like any other business. "Over the years we have recognised that we cannot be all things to all women. In several cases it has meant saying 'no' to some prospective tenants, who may need skilled help which we don't have. We have, though, tried to be faithful to our original ideals," she said.

Grew relishes the fact that they have control over their own destiny and has an enduring pipedream. "Before I leave I would like to see Morrigan set up a home for older Dykes". Many lesbians would echo that.



Residents' children at a Banna house

**Banna Housing Co-op** was a fledgling co-op managed by Morrigan, founded in 1990 as a lesbian housing co-op, the first lesbian housing co-op in the region, probably in the country, Secretary Lesley tells me. Banna is part of a Gaelic word for 'women'.

"We specialise in running and managing houses for a larger co-op and house people in the greatest housing need. The first question on our application form is "Are you a lesbian?". Our Equal Opportunities policy helps ensure places are allocated

fairly and that existing residents don't discriminate because like everyone else, we all have our prejudices and sometimes it's hard to do the right thing."

"We encourage women who would never normally think of applying to a Housing Co-op to make contact with us. People often see Housing Co-ops as a white middle class thing and, at present, most of our tenants are working class white and able bodied. A renovated house accessible to people with disabilities is part of their positive action policy and what's more there's no deposit to find. Benefit claimers are welcome too!

Banna's three houses are small terraced properties, housing mixed and single households and the tenants can bring their pets with them as well! Other pluses of this organisation, they say, are speedy housing repairs.

"Up until the time I moved to Nottingham I would never have considered living in a Housing Co-op. I saw an advert in the Pink Paper for tenants and applied". And for Lesley there is a silver lining too "I saw this lesbian and thought 'she's great', and couldn't believe my luck when she moved in next door'. She came round one night for a drink, and then another night and eventually I plucked up courage and said "why don't you stay over", and she did! (Lesley would like to thank Morrigan, Metropolitan and Nottingham Community Housing Association for all their help).

## THE ADMIRAL DUNCAN

Lower Parliament Street,  
Nottingham,  
0115 950 2727

Can we remind our  
customers that they must  
now be in the building  
before 11pm on all of  
our late nights -  
Wednesdays 'til 12.30am  
Thursdays, Fridays and  
Saturdays 'til 1.30am



**DO YOU NEED TO  
KNOW WHERE YOU  
STAND?**

**TALK THINGS  
THROUGH ANY  
LEGAL PROBLEM!**

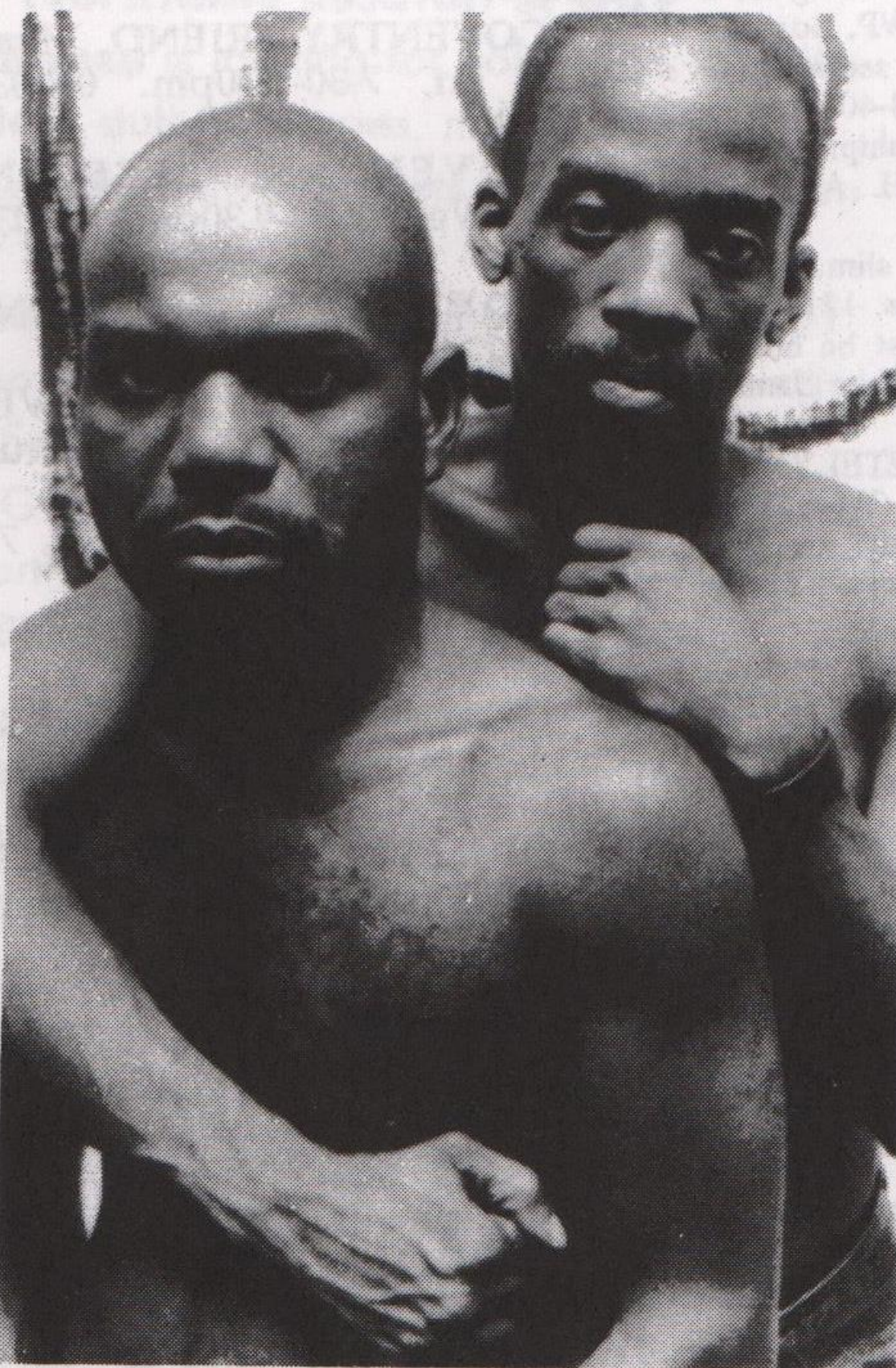
We are a young firm of solicitors who are committed to providing a Legal service to The Gay Community. We will open in October. Tel: 0115 982 6496 for an appointment. Legal Aid available. "FREE" LEGAL/ADVICE CLINIC. CUSTODY SUITES - EMPLOYMENT - CRIME - DISCRIMINATION - LIVING WILLS - BUYING A HOUSE/BUSINESS TOGETHER - IN FACT ANY LEGAL PROBLEM





# OVER THE RAINBOW

## C4 - Review



'Over The Rainbow' was a four-part, powerful and illuminating documentary series which examined what it meant to be lesbian and gay in America: tracing the history, politics and culture of an emerging movement. Perceptive interviews, colourful archive footage and coverage of key events were stylishly intercut and accompanied by a nostalgic and swinging soundtrack, as lesbians and gay men reflected upon significant moments.

The first ever major US lesbian and gay television venture, this million-dollar series was made by a richly talented line-up, including Black British film maker, Isaac Julien and Richard Kwietniowski, whose respective talents were originally revealed in Channel 4's first series of Out. Plaudits to C4 for showing this at peak time.

Pictured are Marlon Riggs, (front) producer of 'Tongues Untied' which became the focus of the religious Right's hate campaign during the 1992 Presidential elections. When right wing Senator Jesse Helms was challenged as to why he had only included extracts of 'Tongues Untied' which showed white leather men frolicking, he said he didn't want to alienate members of the black voting block which the Republicans were hoping to win over!

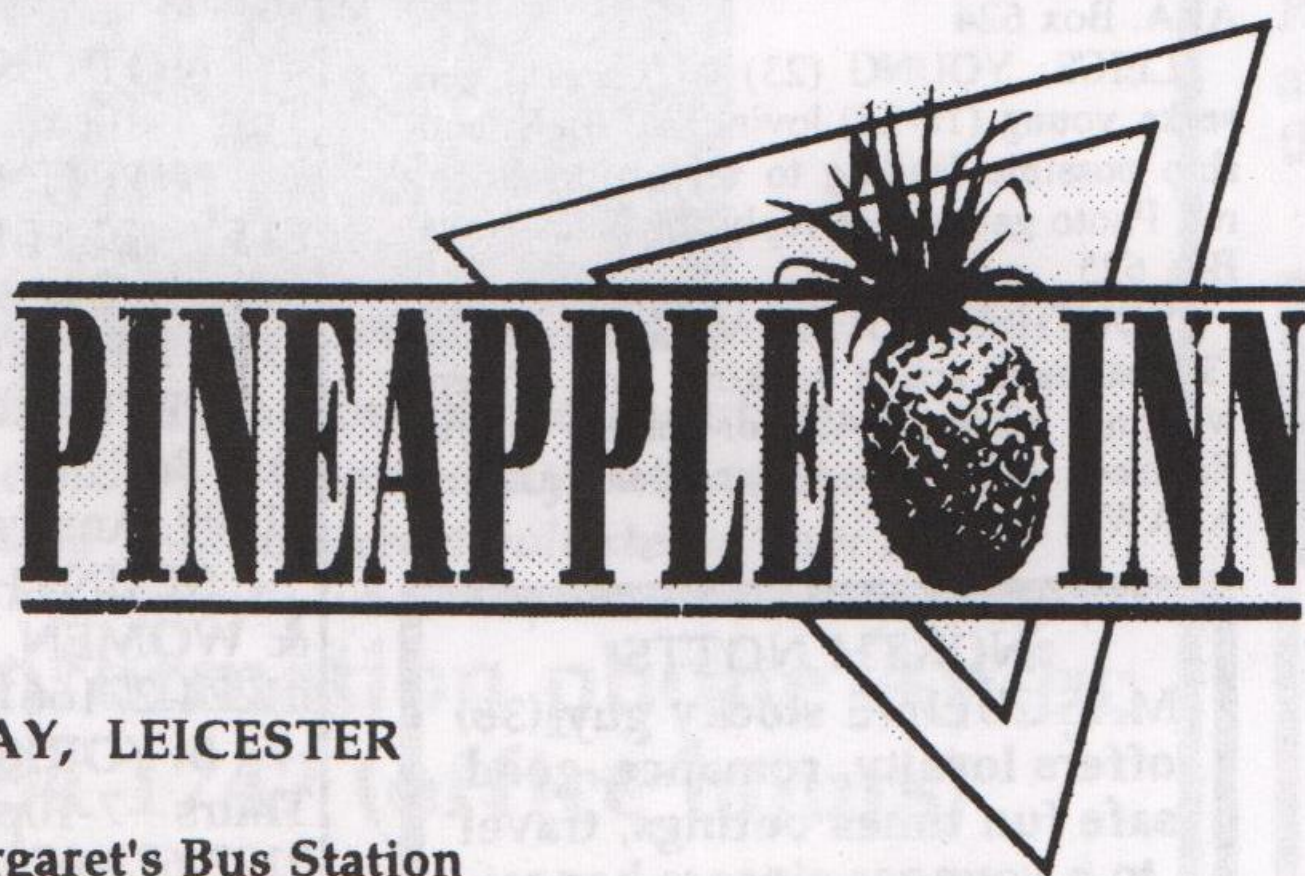
## On The Box

### BBC1 - September AGONY AGAIN

A switch from LWT to Auntie beeb for the return of the late 70's sitcom 'Agony' - now updated to 'Agony Again'. Maureen Lipman, Simon Williams & Maria Charles from the original cast are joined by Sacha Grunpeter who plays the gay son of Jane Lucas, the agony aunt of the title.

## Clifton Playground

The Nottingham-based Clifton Playground Project are looking for committed people to attend monthly meetings (mainly Monday evenings) for fundraising and letter writing. The project welcomes gay, lesbian and bisexual people. Volunteers needed for 1 hour or more if they wish, with travel costs and childcare provided. Contact (0115) 921-1242.



27 BURLEY'S WAY, LEICESTER  
0116 262 3384  
Opposite St. Margaret's Bus Station

## Friday 22nd September

Your invitation to celebrate Pineapple's  
second birthday with \* free cabaret \*  
Hannah Jones, vocalist \* open 'til 2am \*  
\* free entry\* free buffet \*

## BOOKSHOP CLOSING

Blackthorn Bookshop, which has served Leicester's communities for over fifteen years is closing down on Saturday 2nd September. With the new Shires Shopping Centre opposite they had hoped extra business would come their way, but Waterstones Bookshop opened up just across the road which has affected their turnover significantly. Said one of the staff, "We are obviously very sad at the closure of another independent bookshop, one that has had links with the lesbian and gay communities over a number of years. We urge people to continue to buy their books from Mushroom Books or Sheffield's Independent Bookshop whenever they can".

## ARE YOU HOMELESS?

Noelle House offers safe and supportive accommodation for black women and lesbians both singles and couples regardless of race, religion or class. For more information contact Shirley 0115 9244812.

## MASSAGE

ITEC Trainee Masseuse in Nottingham area offering full body massage at reduced rate of £10 per hour (plus travel if long distance).

Contact Tim on 0602 480975

## CAMPION & CO SOLICITORS

FREE LEGAL ADVICE

2.00 PM TO 4.00 PM  
FRIDAY AFTERNOONS

45-47 MANSFIELD ROAD  
NOTTINGHAM NG1 3FH  
TEL: (0115) 947 6373

FREE CAR PARKING NEAR  
VICTORIA CENTRE



# classifieds

**HOW TO REPLY.** Seal each reply in a separate envelope. Write the number of the Box you are replying to in the top right hand corner of each envelope. Place them in a larger envelope. **Enclose two loose first class stamps for each reply: replies without stamps are not forwarded** Address the outer envelope to **Outright**, stamp and post to: PO Box 4, West PDO, Nottingham NG7 2DJ.

## men's personal

**MIDS/ANYWHERE:** TWO guys (40's) looking for couples/singles for raunchy fun & friendship. Photo app. Box 573

**WITHOUT YOU LIFE** has no meaning. Friends, but no passion! Young looking 30's guy seeks rel. based on friendship not sex! I'm sincere & genuine. Thanks. ALAWP. Box 574

**MIDS DUO LOOKING** for safe friendly nights out & in. Mary Poppins is into flying, so are we. WKRP in Cincinnati. Photo ensures a picture of yourself. Box 575

**LEICS/ANYWHERE:** GOOD-LOOKIN' guy (38) wearing leather army gear seeks hot horny action from active imaginative guys. can travel. ALAWP. Box 576

**SLIGHTLY OLDER GAY (63) would like to hear from gays 45-50 for friendship & outings. Box 577**

**E.MIDS/ANYWHERE:** GAY 60's, GSOH, n/scene, straight looking/acting looking for friendship, maybe more. Any colour/creed. Genuine, discreet, affectionate. Box 578

**NOTT'M LAD (24)** 6', slim, med. build, brown hair/eyes, straight acting, not scene queen seeks sim. guy (18-26) for fun/friendship, poss. rel. ALAWP. Gen. advert. Box 579

**HAVE ALL THE** black gay guys left the planet? You can't all be in London. This good looking, fit, young 37 y/o straight acting white guy wants you. Photo? Box 580

**YOUNG NOTT'M GAY** lad (19) looking for 121 seeking someone who has a GSOH & is under 23 (18+) & likes to go pubbing & clubbing. ALAWP. Box 581

**GRANTHAM/ANYWHERE:** 32, self-employed 5'8", s/acting & solvent seeks tall guys 25-40 for special times in/out. Poss. 121 with right man. Waiting patiently. ALAWP. Box 582

**SHEFFIELD GUY (50)** looking for friend poss. leading to rel. I'm slim & straight acting. prefer 40-50 y/o. Box 583

**NOTT'M:** GUY SMOOTH med. build seeks guys 18-25, 5'2"-5'6", smooth, slim build, dark hair, specs, inexp welcome, n/scene. ALAWP & phone. Box 584

**MIDS:** ASIAN/BLACK guys (18-23) sought by very good looking horny young white guy (19) for discreet fun & friendship. Discretion assured. ALA. Box 585

**ANYWHERE:** PENFRIENDS SOUGHT for 32 year young guy. Are you 18-40, sincere, GSOH, unshockable, n/scene, like a laugh & basically have fun in writing? Then I'm waiting! ALA. Box 586

**NORTH NOTTS:** 48, slim, discreet, 5'6" n/scene, n/smoker seeks sim. or younger (18+) local active guy for safe physical fun only. Photo app. Box 588

**WANTED: YOUNG GUYS (18+) with nice smiles** willing to bare their all for art's sake, sought by stylish photographer. Quality work guaranteed. No fees, just exciting exposures. Box 587

**COUPLE SEEK FRIENDS** for nights out & socialising. Beeston area. Box 589

**NOTTS:** 47, BEARDED, seeks mature horny friends. Mild over the knee games & much more. Gen. Can travel. ALAWP. GSOH. Frank, letters. Size unimportant. Also penfriends wanted. Box 590

**NOTT'M:** 26, STRAIGHT acting, caring, honest, sincere, shy-ish. Interests cinema, music, countryside, socialising, seeks sim. guy 28-40 for romance & 121. Box 591

**GAY YORK MALE (27)** intelligent, unconventional but caring & sensitive seeks sim. friends/penpals/contacts/poss. 121. I enjoy new wave music, pubs, travel, cinema & writing. Box 592

**E.MIDS BASED 50 y/o,** safe, sane, experienced butt devotee offers worship & exploration to tactile butts 20-40. ALA. Box 593

**NOTT'M GUY LOOKING** for you Mr. Right. I've a brilliant SOH, loves music, clubs, dancing, sex & more. Med. build, good looking so start writing. Box 594

**SHEFFIELD/ANYWHERE:** GAY male, gen. slim 50, active, into weight training, countryside, world travel seeks 18-50 of colour, Oriental, Arab for friendship, poss. 121. Discreet. ALA. Box 595

**GAY & GREY.** LEICS couple (40's) seek friends any age (18+) wioth gen. interest in natural history, photography, travel UK/Europe. Box 596

**HIYA!! DO YOU** like writing? 35+? GSOH? N/SCENE? GEN? 21 y/o lad would like to hear from you!! Soon!! ALAWP from you! 121 poss. It's you?!? Box 597

**LOUGHBRO':** 22, 6', intelligent, fit, honest, romantic & horny. Interests inc. travel, theatre, cinema, sports indoor & out. Seeks horny devils 25-35 to party with. Box 598

**SWEET CUTE BOYISH 30 y/o** seeks true romantic 30+ under 5'8". I'm 5'6", smooth skin body, green eyes, short cut trendy hair fair. Leics/anywhere. Photo please. Thanks. Box 599

**LEICS:** GAY MALE (27) straight acting, caring, interests varied, n/scene seeks friends 20-30 occasional clubs. Please write soon. You'll be glad. Box 600

**NOTT'M/LEICS/MANSFIELD:** 27 y/o male, shy, sraight acting, fair hair, average looks seeks guys for fun & maybe more. Box 601

**HANDSOME E.MIDS GUY (42),** clean cut, tanned physique seeks guy 18+ for summer fun times, swimming tuition. Phone no. please. Box 602

**BARNESLEY/S. YORKS:** GUY (32) short dark hair, med. build, straight acting, very clean but dirty minded seeks 21-45 for hot safe fun. discretion assured. Box 603

**GUY (25) GOOD LOOKING,** looking for dreamy 20's bloke. Must be fit & kind. Write soon lads. from Derby. Box 604

**LEICS/ANYWHERE:** GOOD looking guy (37) wants to meet singles, couples, party invites, photographers, leather, army, football kit available. Hot horny & yours. ALAWP ret. with mine. Box 605

**E.MIDS:** GUY (40) LIKES guys in suits/slug fitting trousers/jeans/overalls/uniforms who enjoy spanking. Maybe we can live out our fantasies. Box 606

**LOUGHBRO': EX-MARRIED (48)** tall, slim, clean shaven seeks similar or younger (25+) for social in Loughbro' area. Enjoys pubs, clubs, discos etc. & smokes. Box 607

**HANDSOME GAY MALE (32), 6'4",** derby seeks fun & frolic with straight acting guy leading poss. to 121 rel. Loves cooking, music & travel. Box 608

**E.MIDS:** MASCULINE, fit, 6'2", hairy, active (36) divorced n/smoker seeks passive smooth randy guys (18-40) for good times, hopefully more. ALAWP. Box 609

**EXPERIENCED PROF. MAN (40's),** tall, vigorous & considerate seeks younger man (20-40-ish) to enjoy a time of mellow fruitfulness. ALAWP please. Box 610

**NOTTS:** 21 y/o honest caring loving guy loves romantic nights in looking for a 121 with special person. ALAWP. Box 611

**E.MIDS:** 55, 5'9", passive seeks active slim/med/muscular gen. guy 28-40. Personality more important. friendship, maybe more. Varied interests, GSOH. ALAWP. Box 612

**DERBY:** BLOND GUY, slim, 5'10" seeks 18+ partner for fun, poss. 121. Own home. Likes pets, music. Must be horny, honest, s/a, GSOH. Photo? Write James. Box 613

**DERBY/NOTTS:** COMPLETELY mad cult television/telefantasy fan (Who, Trek etc.), 30, slim, GSOH looking for sim. others for fun & friendship, poss. 121 for right guy. Box 614

**NOTT'M/DERBY:** I'm 42 & seeking someone loyal, caring, sincere, GSOH, 28-40 for friendship, poss. 121. varied interests. Photo ensures my reply, mine in return. Box 615

**NOTTS: N/S PASSIVE GUY (60)** 5'11", medium build, straight acting, GSOH, smoker, seeks local w/e active 50+ for shared fun, exchange visits & gen. friendship. ALAWP/Phone. Box 616

**LEICS/NOTT'M:** SOCIAL worker, part time parent (38) not bad to look at but a bit boring n/scene, n/smoker, interests gym, swimming seeks sim. ALAWP. Box 617

**DERBY GUY,** 27 wants man in 20's. Must be good looking & well hung. Box 618

**NOTT'M LAD (23),** dark hair, blue eyes, told good looking, 5'10" wishes to meet other guys 18-28 for friendship or poss. 121. can accom. Photo gets mine. Box 619

**NOTTS:** (33), PLACID, CUTE loveable gay guy alone & starving second time advert genuine nice guy needing a good sexy home this Christmas under 38's (18+) please. Box 620

**NOTTS:** RETIRED MALE (60's) seeks younger (18+) assertive guy. ALAWP & address. Box 621

**MIDS/LEICS:** 27 y/o guy requires scuba diving buddies for summer. Box 622

**MALE (23) DARK HAIR,** blue eyes, large build, average looks enjoys cinema, swimming, pubs etc. seeks gen. hairy gay guy (25-35) for friendship/121. Photo app. Derby/NOTTS. Box 623

**NOTT'M:** YOUNG 34, straight looking/acting, slim, cute, sensitive, loving seeks guy 21-35 slim for friendship hopefully 121. Must be honest, caring, loving & gen. ALA. Box 624

**LEICS:** YOUNG (23) CUTE lad, gen. seeks young (18-28) loving lad for friendship possible leading to long term loving rel. Photo gaurantees reply for Leics/NOTTS. Box 625

**YOUTHFUL ATTRACTIVE MALE (30)** straight acting seeking sim. n/scene working men 25-40 for nights out/in. Relaxed safe fun. Discretion assured. ALAWP. Box 626

**NORTH NOTTS:** MASCULINE stocky guy (36) offers loyalty, romance, good safe fun times outings, travel to a younger sincere honest guy 18-30. Replies assured. Box 627

**DERBY/NOTTS:** ME 26, n/smoker, clean shaven, home owner looking for older guy to take loving care of me, 28-38. GSOH/ALAWP. Box 628

**GORGEOUS SUMMER SUN-BRONZED** guys invited to share sensual, artistic & intellectual pleasures with attractive, slim, tanned versatile prof (30 something). Ideally 121. All nationalities welcome. Photo please. Box 629

**RELAXING MASSAGE OFFERED** 18-60's males (shape/looks insignificant) by Mark 36, gay. No fees, just for fun. Your place. Box 630

## HELPLINES

**CHESTERFIELD HAND,** Mon 1-3pm, Sun 7-9pm. 01246-550550.

**COVENTRY FRIEND,** Mon, Wed, Fri, 7.30-9.30pm. 01203-714199.

**COVENTRY LESBIAN LINE,** Wed, 7.30-9.30pm. 01203-717166.

**COVENTRY MESMEN,** 01203-224090.

**DERBY BODY POSITIVE,** Tue 10.30am-1.30pm, Thur 11.30am-4pm, 01332-292129.

**DERBY FRIEND,** Wed, 7-9.45pm. 01332-349333.

**DERBY LESBIAN LINE,** Wed, 7-9pm. 01332-41411.

**DERBY AIDSLINE,** Mon & Thur, 7-9pm, & Thur, 2-4pm. 0800-622738.

**GRIMSBY & DISTRICT GAY HELPLINE,** Tue & Thur, 7-9pm. 01472-251818.

**LEICESTER LESBIAN/GAY-LINE,** Mon-Fri, 7.30-10.30pm. 0116-255-0667.

**LEICESTERSHIRE AIDS SUPPORT SERVICES,** Mon-Fri, 9.30am-5pm. 0116-255-9995.

**LINCOLNSHIRE AIDS VOLUNTARY GROUP,** Mon, Wed, Fri, 9am-9pm, & Tues, Thur, 9am-5.30pm. 01522-513999.

**LINCOLNSHIRE LESBIAN & GAY SWITCHBOARD,** Thur & Sun, 7-10pm. 01522-535553.

**MANSFIELD/ASHFIELD POSITIVE SUPPORT,** 01623-26254

**NATIONAL BISEXUAL PHONELINE,** Tue & Wed, 7.30-9.30pm. 0181-569-7500.

**NORTH STAFFS LESBIAN & GAY SWITCHBOARD,** Mon, Wed, Fri 8-10pm, Sun 1-3pm, 01782-266998.

**NORTHANTS GAYLINE,** Tue 6.30-9.30pm, 01604-39722.

**NORTHANTS LESBIAN LINE,** Tue 7-9.30pm, 01604-39723

**NOTTINGHAM LESBIAN & GAY SWITCHBOARD,** Mon-Fri, 7-10pm. 0115-941-1454.

**NOTTINGHAM LESBIAN LINE,** Mon & Wed, 7-9pm. 0115-941-0652.

**NOTTINGHAM FRIEND,** Tue, 7-10pm, 0115-947-4717.

**NOTTINGHAM UNIVERSITY LESBIAN & GAYLINE,** termtime Mon, 8-10pm. 0115-951-4999, internal 4999.

**PETERBOROUGH FRIEND,** Tue & Thur, 7.30-9.30pm, 01733-61499. Answerphone other times.

**SCUNTHORPE GAY MEN & WOMEN,** Wed & Fri, 7-9pm, 01274-271661.

**S YORKS CONNECTIONS,** Thurs 7-10pm & Sun 3-8pm, 0122-673-0703.

**SHEFFIELD AIDS LINE,** Mon-Thur, 7-10pm, 0800-844334.

**SHEFFIELD GAYPHONE,** Mon-Wed, 7.30-9.30pm, 0114-258-8199.

**WELFAIR,** 0115-940-3940.

**WELLINGBORO' GAY-LINE,** Thur, 6.30-9.30pm, 01933-223591

**BIKER LEATHER DENIM** easy going bloke seeking same. Up to 45 years old. Must be non-camp & a genuine biker. I am 38. North derbys. Box 631

**ATTRACTIVE, FRIENDLY, FUN-**



## OUTPOST!

Have outright! delivered by first class post in plain brown sealed envelope. Especially useful for keeping up with the classifieds.

Send £5 for 12 issues to: outright!, PO Box 4, West PDO, Nottingham NG7 2DJ

LOVING guy (30's) into sportswear/briefs/lockerroom fun, hugs/cuddles, aromatherapy, massage, tickling sessions/fights, fun/fantasy wrestling, wrestling videos, seeks friends. Photo app. Box 632

STUDENT (20's) TALL, SLIM, pony tail, green eyes non-camp, intelligent seeks sim. student 18-30 for warm friendship. Derby/Notts. Photo app. Box 633

LEICS: GUY (42) prof., caring, wants to meet younger (18+) straight acting for friendship/rel. Please write in confidence. Phone no/Photo app. Box 634

SHEFFIELD: INEXPERIENCED BUT hot (29) seeks man (men?) for safe initiation into CP, bondage, discipline, leather. Send frank letter of instruction & photo. I'll be your dog! Box 635

MANSFIELD: 20, TALL med. build smoker seeks sim. guy for fun & friendship. You 21+, GSOH, outgoing. Take a chance. ALA. Photo & contact no. if poss. Box 636

NEWARK: SKIN BIKER (30) tall, active, likes adventure, backpacking, mountain walking, climbing, indie & rock music w.l.t.m. young skins (18+) & friends in newark area. Use that pen, boy! Box 637

NOTT'M: YOUNG, STRAIGHT looking/acting 60 passive seeks active younger guy (18+) for gen. friendship. Many interests. SEXY 22yr Old wasters. Box 638

SEXY 22yr Old honest, passionate looking for someone to have a laugh with, developing into a rel. You never know, I could be the one! Box 639

LEICS/E.MIDS: 26, blond, 5'10", cute (I'm told) seeking younger (18-30) guy for fun, friendship & hopefully 121. Send photo please. I'm loving, sincere, gen. & fun. Box 640

NOTT'M/DERBY/LEICS: Anyone out there who is into briefs, shorts etc? I'm seeking friends to share my interest. Please write with a photo, mine in ret. Box 641

JOHN FROM NOTTS (45), med. build, seeking Notts. male (40-49) for friendship. Must be car owner. 60's/70's music, carry On films, railways. Box 642

LEICS/ANYWHERE: 29 yrs old 5'5" height smooth skinned boyish looking seeks fun games fantasy. A real turn on is to see a guy (18+) in a school uniform. Box 643

### RETIRED BACHELOR SEEKS

similar for weekends, holidays & friendship. Share mutual interests. 50+ pref. Animal lover hopefully. Box 644

NOTT'M: 29 Y/O prof, tall, dark, goodlooking into music, theatre & having fun. If you're sim. drop me a line. ALAWP. Box 645

S.YORKS/ANYWHERE: MID-30's, med/stocky build, told fairly attractive. Honest, SOH, many interests seeks active man (18-45) SOH/GSOH, average+ looks. Fun/friendship initially, poss. rel. Can accom. OLWPA. Box 646

NOTTS: 24, TALL, medium, n/scene, straight acting seeks honest & gen. guys with good personality for friendship/mutual fun & poss. 121. Photo nice but not essential. Box 647

QUIET VILLAGE, NORTH Notts/Lincs border: Guy (29) boyish looks, trendy, slim, straight acting who's mega-lonely seeks friends anywhere, pref. local-ish. Please write! Please help!!! Box 648

ANY GAY MEN out there doing the Open University's Science Foundation Course? 35 y/o would like to correspond/meet for study sessions! I'm in Nott'm. Box 649

NOTTS: 30-SOMETHING, TALL, dark & (told) handsome, VGSOH, very straight acting/looking, loves theatre/cinema looking for sim. guy who wants commitment. Photo please. Box 650

**NOTT'M / DERBY: FRIEND sought (25-40) by professional man (42) for conversation, closeness & getting to know each other. ALA. Box 651**

CHESTERFIELD: GAY MALE blonde, occ. scene, 31, seeks sim. 30/35 gen people only. me med. build, told cute. Fed up of being messed around. Homely person not boring. Box 652

NOTT'M: GUY (30) 5'10", dark hair, s/acting, n/scene enjoys cinema, theatre, country pubs, swimming seeks guys 21+ for friendship, maybe more with sim. interests. ALAWP. Box 653

### IF YOU'RE SLIM, 18-19,

would like 6 months as houseboy in Sydney, Australia, this fit, classy, 40's, rich Aussie will send your return ticket. Airmail with 41p stamp please (Plus £1.50 for forwarding your letter). Box 654

MIDS: MID-30's, Asian GSOH loves being gay & horny seeks guys 20-40 for friendship, discreet fun. Always safe. I am intelligent desirable innocent! ALA. Get writing. Box 655

BEAUTIFUL, RESPECTFUL, WEEK-END houseservant, 38, average looks, begs unpaid position with young, arrogant unyielding couples/individual. Work me hard, frustrate my desires accentuate my inferiority! Midlands. Box 656

### mixed personal

MIDLANDS NATURIST BI-GUY seeking friends, both sexes for sharing time/hols UK/abroad. Can travel/accom. Enjoys shorts, caravanning, watersport, photography, videos, briefs. Slim, average looks. GSOH. ALAWP quickly. Box 122

RUTLAND/LEICS: DISCREET dominant male (50's) seeks female or TS submissives for training, SM & safe fun. Have well equipped playroom. Duo's considered. Please reply with details. Box 123

BI GUY, N/SMOKER (50's) discreet, clean, randy seeks interesting honest person for friendly, loving rel. Any age, TLC in abundance. Must be gentle with warm persona. Box 124

### women's personal

LEICS/DERBY/ANYWHERE: Gay female (44) prof. career. Thoughtful, compassionate, GSOH, lonely with 2 ctas & lots of books seeks special friend/soulmate for walks, talks, times together. Box 835

VERY SHY, INTELLIGENT bisexual woman (36) educated, not very feminine seeks sister figure to help come to terms with sexuality (Not very long 'out'). Box 836

LESBIAN BLACK MUM wishes to meet other lesbian mums for friendship, socialising. Photo app. leics. area. Warm personality important. Let's get together for support, fun/end isolation. Box 837

"JUST WHEN YOU felt like giving up, believing you'd never find that soul partner

**GAY FEMALE (22) SEEKS excitement and serenity. Sincere, GSOH, caring, down-to-Earth but lonesome. Interested? Friendship, poss. 121. Looks irrelevant. ALA. Box 839**

you've searched a lifetime for?? Well here I am!!" ALAWPP. Loving lesbian. Lincs. Box 838

JOIN US. NEW group 35+ for single lesbians who are sick of talking to the wall. Nott'm area. First meeting 3rd Saturday sept. Write for details. Box 840

LEICS: GAY INDIAN female, easy going, GSOH, into music, travel, pubs, clubs, enjoying life! seeks female 20-25 for loads of fun, friendship, hopefully more. ALA. Box 841

GAY FEMALE, LEICS. (38) feminine, n/scene into music, travel, GSOH wishes to meet female sim. age, not too butch please, photo if poss. Box 842

DERBY: GAY FEMALE young 37 needs love & affection, seeks non butch woman for nights in/out. I enjoy good food, wine, meaningful music. Give me a chance. Box 843

WANTED: SEXY SENSUOUS attractive feminine gay woman 24-31 for sporty, romantic fun loving 26 y/o. N/smoker pref. ALA. Photo app. Lincs area, no bi's. Box 844

NOTTS/W.YORKS: LESBIAN seeks older friend (40+). Loves walking, music, animals, country pubs. I am affectionate & caring & want no more users! Fed up too? Then write...Box 845

GAY FEMALE (24) 5'8", butch, romantic, sincere, loyal seeks someone between age of 20-30 with GSOH. Looks unimportant. ALA. Derby/Notts. Box 846

NOTTS: GAY FEMALE (23) feminine & attractive wants to love again. Whether butch, femme or inbetween, outer surface unimportant. Write now for love & laughs. Box 847

LESBIAN 32 YEARS caring, sensitive, self-aware with varied interests seeks together sexually aware lesbian into laughter & fun times. 121 with right person. Notts/Derbys/Chesterfield area. Box 848

SHEFFIELD/ANYWHERE: GAY woman (51), slim, boyish/feminine, prof, romantic, kind. Loves harbours, country, arts, laughter seeks loving homely feminine-ish woman, GSOH, n/scene, 40's-50's seeking lasting rel. Box 849

SHY, INTELLIGENT BISEXUAL woman (36) single, w.l.t.m. other women for socialising, conversation, poss. rel. Interests cinema, travel, comedy. Based in Lincs. Box 850

SHEFFIELD: MATURE PROF., varied interests seeks sim. sincere younger woman who knows who she is & where she's going, for friendship/rel. Sheffield area. Box 851

SEEKING GAY FEMALES for friendship, fun, evenings out, maybe 121. Life alone is no fun. N/smoker, animal lover, VGSOH. Photo essential, 30-40 yrs. ALA, no time wasters. Box 852

LEICS: GAY FEMALE (39) 5'7", affectionate, caring, various interests, seeks someone to watch the moon go down & the sun come up. Photo if poss. ALA. Box 853

SINGLE, GAY, AQUARIAN (23) with own home & car, not much money(!) needs help finding passion & good friendship. Can you help? Northants/anywhere. ALA. Box 854

YOUNG SHEFFIELD LESBIAN, feminine, caring, intelligent, into enjoying life & having fun seeks feminine, intelligent lady, any age for friendship, maybe love. ALA. Box 855

GAY FEMALE (24) SEEKS female for friendship, hopefully more. I'm genuine, sincere, fun-loving, enjoy films & going out. Sheffield area. Box 856

NOTTS: NEW IN town, looking for friends to have fun with. On or off scene. Poss. rel. Box 857

LEICS: GAY FEMALE (27), feminine, slim, attractive animal lover, independent, caring, romantic seeks feminine female (23-30) into clubbing, sport, music, travel & a loving rel. Photo please. Box 858

IS THERE A gen. gay or bisexual submissive female who knows her place & seeks to serve a gen. dominant female? Reply at once. Box 859

### notices

NOTTS: YOUNGISH MAN, honest, practical & reliable needs part-time daily work cleaning, laundry or pet duties. Suit profs, single/ married. Reasonable rates, very caring. Box E1

BRITISH RAIL, WEDNESDAY 9th August, 5pm. I got on Chesterfield. You Sheffield - spoke. I had to leave at Alfreton. Student social worker wants to hear from you. Box 001

### ACCOMMODATION ADS P 10

#### COPY DATES

No 66: 29th Sept

No 67: 27th Oct

No 68: 24th Nov

#### PUBLICATION DATES

7th Oct, 4th Nov, 2nd Dec

**HOW TO PLACE AN AD.** Complete the form below. Write clearly please, and punctuate! Keep ads short and sweet: max 27 words. **OUTRIGHT** may refuse or amend ads. One free ad per issue. **Enhance your ad in display for £4.** Commercial advertisers please write or phone for rates.

cut here

### CLASSIFIED ADS

Complete and return to Outright, PO Box 4, West PDO, Nottingham, NG7 2DJ.


cut here

Mens ... Womens ... Mixed ... Accom ... / Display ..... (£4 cheque/PO)

Name.....

Address.....

Post code.....



## accommodation

ALLESTREE/DERBY: SINGLE room in newly decorated cottage. Suit n/smoking young prof. male. Must like dogs. £45 pw inc. bills. Meals extra. Graham: 01332-541074

WORKING PERSON REQ'D to share 3 bed house in Long Eaton. £45 pw inc, except phone. Cat lover pref! Easy access Nott'm/Derby/M1 J25. Nik: 0115-946-2572

**GAY PERSON**  
to share 3 bed house in  
**Burton-On-Trent with lesbian**  
**owner. Very cosy & nicely**  
**decorated. £45 pw inc, except**  
**phone. Details on 01283-740296**

ARNOLD: 2 BEAUTIFUL ROOMS to let 1 double, 1 single in luxury house. Every mod. Luxury cinema Sky system, BBQ area. share with young prof. £42 & £35. No bills. 0115-969-1089

GAY SINGLE OR COUPLE to rent rural 1 bedroom cottage. Cheap to run, near matlock, derbys. Deposit req. Rent around £250 pcm. Phone office hours 01629-824862

SHEFFIELD: ROOM AVAILABLE in house. Good access M1/Meadowhall. Share with cheery bi bloke. AMC, GCH. £35 pw + bills. Ian: 0114-242-5350. Gender irrelevant.

**LINCOLN: HOUSE SHARE**  
near town centre. Own room,  
share kitchen, bathroom &  
washer. TV provided. Gay &  
Lesbian couples welcome, also  
singles/DSS welcome. Tel:  
01374-253881

LEICS: GAY MALE n/s req'd to share house. own room, double bed, all mod cons. Clarendon Park-very close to university. £45 p/w inc. Phone Mark: 0116-270-6327

SHEFFIELD: ATTRACTIVE ATTIC room to let in civilized house for LGB. Tidy n/smoker pref. £35 pw + share bills. No DSS. Phone Jane or Toni: 0114-250-7240

SAWLEY/LONG EATON: GAY friendly, n/smoking person req'd to share house with owner. GSOH. £45 pw inc. except phone. Suit prof. quiet person. Phone Nigel: 0115-972-7495

ACCOM. WANTED CENTRAL Sheff. field for bi/gay woman, 2nd year Uni. student. Flat or house. Pref. in open minded gay/bi household. Kairen: 01909-722163

**BARRIE**  
**WARD**  
&  
**JULIAN**  
**GRIFFITHS**  
  
**SOLICITORS**

5, Clarendon Street,  
Nottingham, NG1 5HS.  
Telephone (0602) 412622  
After hours (0602) 602324

**LATE SUMMER BREAK**  
in Amsterdam. Comfortable,  
s/c, split-level apartment.  
Sleeps 2/4. For daily/weekend  
rates phone  
Eric: 00-31-20-623-0055

LESBIAN COUPLE 26/35 moving to Leics. end of Sept. seeking accom. & friends in leics/Nott'm. Quiet, easy going, loads of interests, n/smokers. Box A12

CHESTERFIELD: GAY MALES wanted to share 4 bedroom detached house, fully furnished. 2 bathrooms, down-stairs lo plus parking space. Tel: 01246-238346.

LEICS: HOMELY ACCOM. in shared house. Own room. All mod cons. £35pw, meals available. Suit male student worker. Tel: 0116-243-3984

LEICS: SCRAPTOFT AREA. carer wanted for slightly disabled person in bungalow. £25pw + bills. Please ring Nick: 0116-243-4145

N.W.LEICS..CLOSE M1 J22. Furnished self contained apartment in lesbian garden-er's home. Suit single working female or couple. More details: Jane 01530-831570

DERBY: GAY PROF. lady to share 3 bed quiet detached house with owner. Well furnished, sunny garden, own car space. Must be non-smoker, considerate & tidy. £250 pcm minus phone. Box A18

FLATSHARE OFFERED. SNEINTON, Nott'm. Own room, share facilities with friendly male owner (35). All mod cons. Must be employed/mature student. £30 pw + half phonebill. Box A20

LEICS: ROOM TO let in quiet house. woman only. N/smoker & vege pref. £45 inc. except phone. 0116-267-7492

**NOTT'M: TRENT**  
**BRIDGE.**

Working gay male/mature  
student to share house with  
two others. £40pw inc. except  
phone. Smoker welcome.  
0115-986-2028

## British School of Shiatsu-Do

Offers both day courses  
and the full professional  
training in Shiatsu-Do  
Our next Open Evening is  
on Wednesday 13th Sept  
and there is a practical Day  
Course on Saturday 16th Sept.



Please phone Linda Sharples on  
0115 9820334 for further details

**CLASSIFIED ADS:**  
**CATEGORIES**  
**AVAILABLE NOW**  
**INCLUDE BIRTHDAYS,**  
**ANNIVERSARIES,**  
**SITUATIONS VACANT,**  
**FOR SALE & MESSAGES.**  
**ENHANCED DISPLAY**  
**ONLY £4**

## Outright! in Braille

If you know anyone with sight impairment who reads Braille, tell them about **outright!** We are offering **outright!** in Braille from October at half the price we pay: £6 per copy (with classified ad pages) or £5 (without classifieds). Translations made to order so allow 7 days for your copy to arrive. Write with cheque/postal order to **outright!** Box 4, West PDO, Nottingham NG7 2DJ.

## PORTRAIT PHOTOGRAPHY

Beautiful portraits by a well established, qualified professional. A discreet, understanding and sensitive service for gay or lesbian singles and couples. For personal attention call Bob on  
**0115 981 4303**

## AUDITOR WANTED

A Nottingham based voluntary group needs a qualified Auditor. If you can spare the time once a year, contact The OUT HOUSE Project, Box 11, 118 Mansfield Road, Nottingham, NG1 3HL.

## Making a Will

*is probably one of the most important and thoughtful decisions you will ever make. This can now be done professionally and sympathetically in the comfort of your home, any time, any day of the week.*  
*Why not call me to find out more.*  
**David Baxter (01949) 851119**  
(24 hour ansaphone)

## NOTTINGHAMSHIRE PEOPLES HOUSING ASSOCIATION

## TEAM LEADER - FEMALE

EMERGENCY ACCOMMODATION FOR WOMEN PROJECT

**£18,189 per annum (pro rata for job share)**

**FULL-TIME 37 HOURS PER WEEK**

NPHA is a voluntary organisation providing temporary accommodation for homeless people. The Emergency Accommodation for Women project is a new scheme consisting of a twelve bedspace quick access accommodation project for homeless young women aged 16 to 25, together with a four bed move-on house.

We are looking for a dynamic Team Leader to manage this exciting new project and supervise the team of Project Workers.

### Applicants should have:

Genuine commitment to Equality of Opportunity and to meeting the needs of homeless young women

Experience of housing management, supervision of staff (paid/unpaid) and providing support to tenants/residents/young women

A knowledge and understanding of relevant legislation and the welfare benefits system

The ability to promote the project, together with experience of preparing and presenting reports and statistical information

For more details and an application form please send a large S.A.E. to NPHA at: Kilbourn Street, off Huntingdon Street, NOTTINGHAM NG3 1BQ, telephone 948 0483

Closing date 5pm, Wednesday 20 September 1995

Interviews will be held Friday 29 September 1995

NPHA is fully committed to the active promotion of Equal Opportunities as an employer and in the provision of services. We welcome applications from all sections of the community. Applications are particularly encouraged however from Black women, lesbians and disabled women, who are currently under-represented in management positions in the organisation. Unfortunately our office is not wheelchair accessible.

This post is exempt under section 43 of the Sex Discrimination Act 1975