

outright!

march 1996 issue 71

for gays, lesbians and bisexuals free

A DRIVING FORCE

Donna Gardner has plenty to smile about these days. She has recently joined Nottingham City Transport's team of bus drivers at the ripe old age of 23!

"I have always liked driving and my grandad used to be a bus driver so one day I contacted the City Transport but they told me I would have to be 25 before I could apply. However, a friend said I should have a talk with Notts. Women's Training Scheme who run training courses in driving for women".

So she did and got accepted onto one of their PSV training courses, training with other women. Although she was late in enrolling on the course she managed to complete it with flying colours and landed the council job early this year.

And what do the passengers think of her driving? "One woman said you give us a gentle ride, most of the men just fling us about".

Donna's grandad takes a lively interest in her progress and still phones her every night to see how she got on.



Hot tub fun! More photos on page nine

THE ADMIRAL DUNCAN

Lower Parliament Street,
Nottingham (0115) 950 2727

**From April 5th The Duncan will
be operating as a Members Club**

Club membership is free and available now
to all gay men, lesbians and other
gay-friendly people

*Better join soon and avoid the
last-minute rush*

THE KITSCH CLUB FOR MEMBERS AND THEIR GUESTS

SATURDAYS IS
HOT PANTS

A Gay Extravaganza with resident Djs
Paul Baker, Sam Rushton, Sharon O Love,
Dan Passion & Miss Natalie

**Saturday 16th March is
The Kitsch Club's 1st Birthday Party!!
Unstress & Undress**

Doors Open 10.30pm
Tel (0115) 9520021/9562006

For your free Kitsch Membership fill in the
form below (BLOCK LETTERS PLEASE)
and send with a SAE to:
The Kitsch Club, 19 Greyhound St.
Nottingham, NG1 2DP.

NAME.....DOB.....
ADDRESS.....
.....POSTCODE.....

● Briefly ...

● **Pink Chalk**, Sunday 24th March, Sunday lunch, welcome to LGB workers in education. Details from Anthony 0115 958 5814.

● **PinkCap**, this is a new support group for lesbian and gay employees/volunteers who work within MENCAP. Meeting in Nottingham, 1st Thursday of every month, 7.30pm. Contact Pinkcap c/o ICC, 61b Mansfield Road, Nottingham, NG1 3FN.

● **Pink Alternative Folk Dance**, meet 2nd Sunday of every month. Further details phone Andrew 0115 942 4305.

● **Talkback Lesbian Discussion Group**, meets second Wednesday of each month, 8pm, at the Lesbian Centre, Nottingham Women's Centre, 30 Chaucer St. Nottingham. Next meeting 13th March, will be about the lesbian community. All lesbians welcome.

● **International Women's Day evening Cabaret**, Friday 8th March, 8-12 midnight, features Doctor Legge, Catachewedyanewshoes, Kokumo Rocks, Chase the Waves and Spinsta Sounds. Nottingham Womens Centre, 30 Chaucer St. Nottingham, 0115 941 1475. Tickets on door, £2.50/£3.50/£5.00. Please bring own refreshments.

● **Calling all lesbian & gay midwives in the Royal College of Midwives**. If you want to get involved in a new support and campaigning group, holding meetings up and down the country, contact Melanie Eveny at Royal College, in confidence, on 0171 872 5101.



Jo Joes

The staff at Jo Joes, Smallbrook Queensway, Birmingham, waiting to serve at the International Women's Day event on 8th March. The evening features live music from The Other Woman, with a raffle in aid of LesBeWell. Admission to this event is free.

Winter Walks

Sunday March 5: Weekenders, meet Clumber Park car park on A614 at 10.45am. Bring packed lunch. All welcome. More info from Friend in Sheffield, Nott'm, Derby (see helpline page 10).

Sunday 17 March: Nott'm Hiking Dykes, meet Youlgreave car park, top of village, 10.30am start for 8 miles into Lathkill Dale. Women only.

Sunday 17 March: Pink Pathfinders 9.5 miles from Eyam car park to Eyam Moor and Bretton, meet 10.45am. More info from Brian or Bob 01159 677081.

Sunday 24 March: Sheffield Hiking Dykes, meet 10.30am at Rivelin Valley Road car park for 9 mile circular walk. Bus 88 or Supertram to Malin Bridge. Women only.

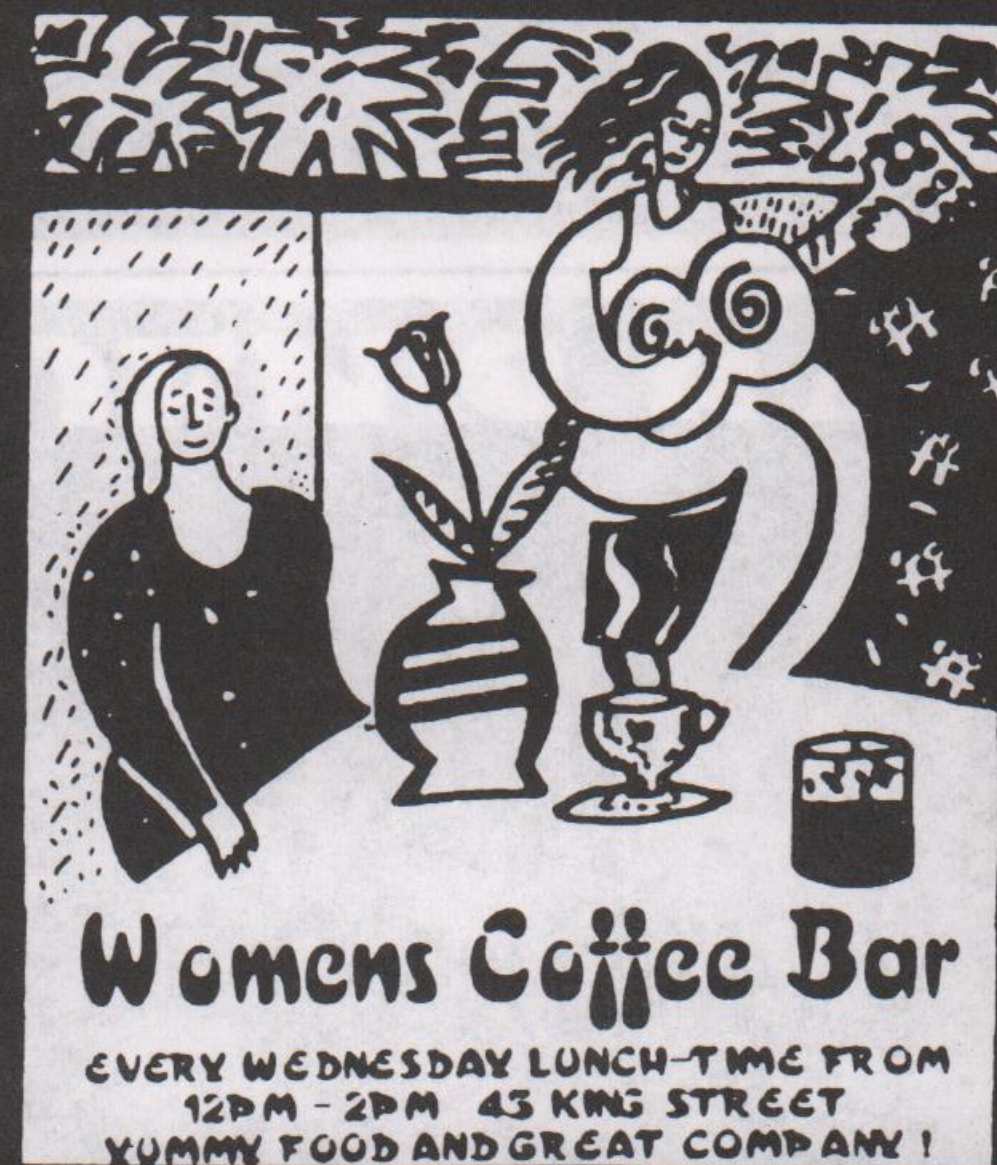
Sunday 31 March: Transpennine GOC, 15 mile walk to Win Hill and Ladybower. More info from John 0113 273 7040.

'The Dyke', a quarterly for lesbians who enjoy walking, £3.50 from Rose Reeves, 121b Huddleston Rd, London N7 0EH.

COAT HANGER EUTHANASIA

One fifth of all AIDS deaths in Canada involve euthanasia or assisted suicide, claims researcher Russel Ogden. "These deaths are far worse than the disease they were intended to defeat" he said, speaking recently to a Voluntary Euthanasia Society symposium at the Royal Society of Medicine.

A National Opinion Poll in 1993 showed that 79% of Britons are in favour of legalising voluntary euthanasia. (Source: The Free-thinker)



Lesbian and Gay Line 0116 255 0667

mushroom

B.O.O.K.S.H.O.P

As reviewed in DIVA
**"VAMPS,
VIRGINS AND
VICTIMS**

How women can fight Aids"
Robin Gorna PB £16.99

"BISEXUAL HORIZONS
politics, histories, lives"
Rose Stevens et al.
PB £12.99

10 Heathcote St, Nottingham
NG1 3AA. 0115 958 2506

USE YOUR BUYING POWER

HIZIKI

Buying from countries and companies with a commitment to social justice - Hiziki has the widest range of wholefoods, fresh bread, take-away snacks, organic fruit & veg, vegetarian convenience foods, and organic wine & beer in Nottingham. We also stock many natural remedies, cruelty-free toiletries & environment friendly cleaning products.

5% discount for UB40s, OAPs & students on Wed/Thurs.

Hiziki is a workers' co-operative

15 GOOSEGATE, HOCKLEY
NOTTINGHAM

**FOR POSITIVE
CHANGE**

INFORMATION
around safer sex, HIV/AIDS and other sexually transmitted diseases

ADVICE & SUPPORT
on all sexual health issues, physical and emotional

Community Action
CASH
on Sexual Health

TRAINING
around sexual health and sexuality, anti-homophobia etc.

LEAFLETS & POSTERS
and other resources

FREE CONDOMS
also water-based lubricants and dental dams

Available free and confidentially to everyone, regardless of age, sexuality, colour, race, religion, disability or HIV status.

CASH is part of Peak Health, North Derbyshire Health Authority's Health Promotion Programme.

CONTACT:
Richard Marriott
4 Rose Hill, Chesterfield
S40 1LW Tel: (01246) 559431

● Briefly ...

● **International Women's Day in Birmingham**, 8th March, Benefit evening at Jo Joes, presenting 'The Other Woman', free admittance, Jo Joes, Smallbrook Queensway, Birmingham and a day of workshops the following day.

● **Older Lesbian Forum**, a morning of discussion and getting to know each other. 10.30am-12.30pm, Saturday 9th March, Aston University, Birmingham. Free, contact LesBeWell, PO Box 4048, Moseley, Birmingham, B13 8DP.

● **Talk it Out**, Are you a young lesbian coming out? Or have you only recently come out? Come to talk it out - an afternoon for young lesbians. 2pm Saturday 9th March, Aston University, Birmingham. Free, contact LesBeWell, PO Box 4048, Moseley, Birmingham, B13 8DP.

outburst! special

I write in response to the letters about Transsexuals using the Women's Coffee Bar.

I regularly go to the Women's Coffee Bar. Whenever men come in not realising it's women only they more often than not say jokingly "Could I come in if I wear a dress?" To them - and you Stephanie - I say "NO". You may have had major surgery and take hormones to look on the outside look like a woman. But you will never, and can never, become one. You either are one - or you aren't. You no doubt have your own experience of discrimination - but that doesn't mean that we should allow post and pre-operative Transsexuals in women only space. Our space is very limited already and the need for it is very real - all the pubs are mainly for men and there are few places other than the women's coffee bar to meet women friends that is safe and friendly.

Yours faithfully,
Elizabeth Bennett, Leicester.

I write in response to the letter from Stephanie Fisher in your last issue. I have known her now for the past sixteen years and am proud to say that we became very close friends. She has always been considerate of other people's needs and problems. When she told me about that incident at the coffee bar I could see just how much it had hurt her. I cannot honestly remember ever seeing her look so distressed. Why do people become so prejudiced as to cause such emotional pain to others? Was this all so necessary? Does the committee feel no shame at setting such a bad example?

We have a good crowd that go there, but those responsible are well out of line by making such over the top policies. Such inhumane decisions are totally unnecessary.

Brian Hunt, Rutland.

THE MENS SEXUAL HEALTH PROJECT 45 King Street Leicester LE1 6RN (0116) 254 1747

We offer information, counselling and support around HIV/Sexual Health, safer sex, relationships and sexuality.
We provide free condoms, lubricant and dams on request.

We are a team of 3 Gay men:-

Andy Griffiths - Project Co-ordinator

Dylan Parris - Project Worker
(Black men who have sex with men)

David Peet - Project Worker (Cottaging & cruising issues)

OPENING TIMES

Monday 12 noon - 4pm

Tuesday 12 noon - 4pm

Wednesday The Centre is Women Only

Thursday 12 noon - 4pm

Friday 12 noon - 4pm

2nd Saturday of every month 12 noon - 3pm

ALL OUR SERVICES ARE FREE AND CONFIDENTIAL

Available free to all men who have sex with men regardless of age, sexuality, race, religion, disability or antibody status.

TRADE

is a group of gay and bisexual volunteers who want to do something about the HIV epidemic.

If you are interested in getting involved, why not give us a ring.



TRADE

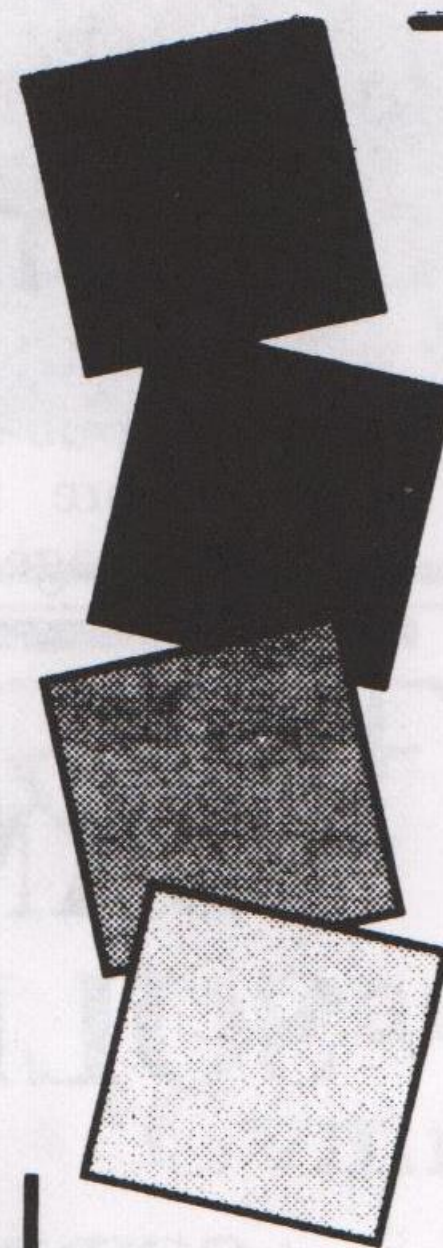
We are particularly keen to recruit volunteers from Black communities who are currently under-represented in our organisation.

I was in the coffee bar that quiet day in the adjacent room (with open access). I heard nothing to suggest that anyone was being 'publicly humiliated'. Quietly asked to leave perhaps by a member of staff who believed she was carrying out agreed policy, i.e. womens' space for women!

From the letter printed, Stephanie Fisher's gender/sexuality remains a mystery to me, compounded by the euphemistic use of the term, 'medical condition'. Those who create confusion will experience it, unfortunately often through gossip!

I consider the current policy and the action taken on that day to be right in this particular case.

Yours sincerely,
F M Holdom, Leicester.



Portland

Insurance Services Ltd

5 Coachmans Court, The Cattle Market,
Ipswich, Suffolk IP4 1DX

Pubs & Clubs

Household • Motor

Hotels & Restaurants

Commercial & Liability

Personal Accident

& Sickness

Life & Pension Mortgage Protection Investments

For further information
please call Phil Carvosso

Telephone 01473-289115

Facsimile: 01473-233661

Portland - Broker for Pride '95

An appointed representative of Eurosire Investment Services Ltd,
who are regulated by the Personal Investment Authority



● Briefly ...

● **Performance Poetry** to celebrate International Women's Day on March 13th at Sheffield College, Castle Centre, Granville Road, Sheffield in the restaurant, 1.15-2.45pm: Jean 'Binta' Breeze and Seni Senevirante. Admission free.

● **Training! Training! Training!** Anyone interested in doing training with and for the Leicester Lesbian, Gay and Bisexual Resources Centre around lesbian, gay and bisexual awareness contact Fee on (0116) 254 7412.

● **Nottingham Out House Project** General Meeting, 27th March, to present completed business plans for membership consideration, and an opportunity to walk round the premises proposed for acquisition. 7.30pm Admiral Duncan, (members only, but you can join at beginning of this meeting). A chance to take part in the development of Nottingham's lesbian, gay, bisexual centre

Lesbian Night is Tuesday Night! at Nottingham Friend

Confidential Helpline and face-to-face support by lesbians for lesbians (0115) 947 4717

7pm-9.30pm Tuesday evenings or write Tuesday Friend c/o CVS, 33 Mansfield Road, Nottingham, NG1 3FF.

MAPS on Mondays

Drop in Centre

Westfield Folkhouse
Westfield Lane, Mansfield

HIV positive or caring for someone who is?

Maybe you need some questions answered or perhaps you just need to talk.

Call in any monday between 8.00 - 10.00pm.



MAPS HIV & AIDS Support Group

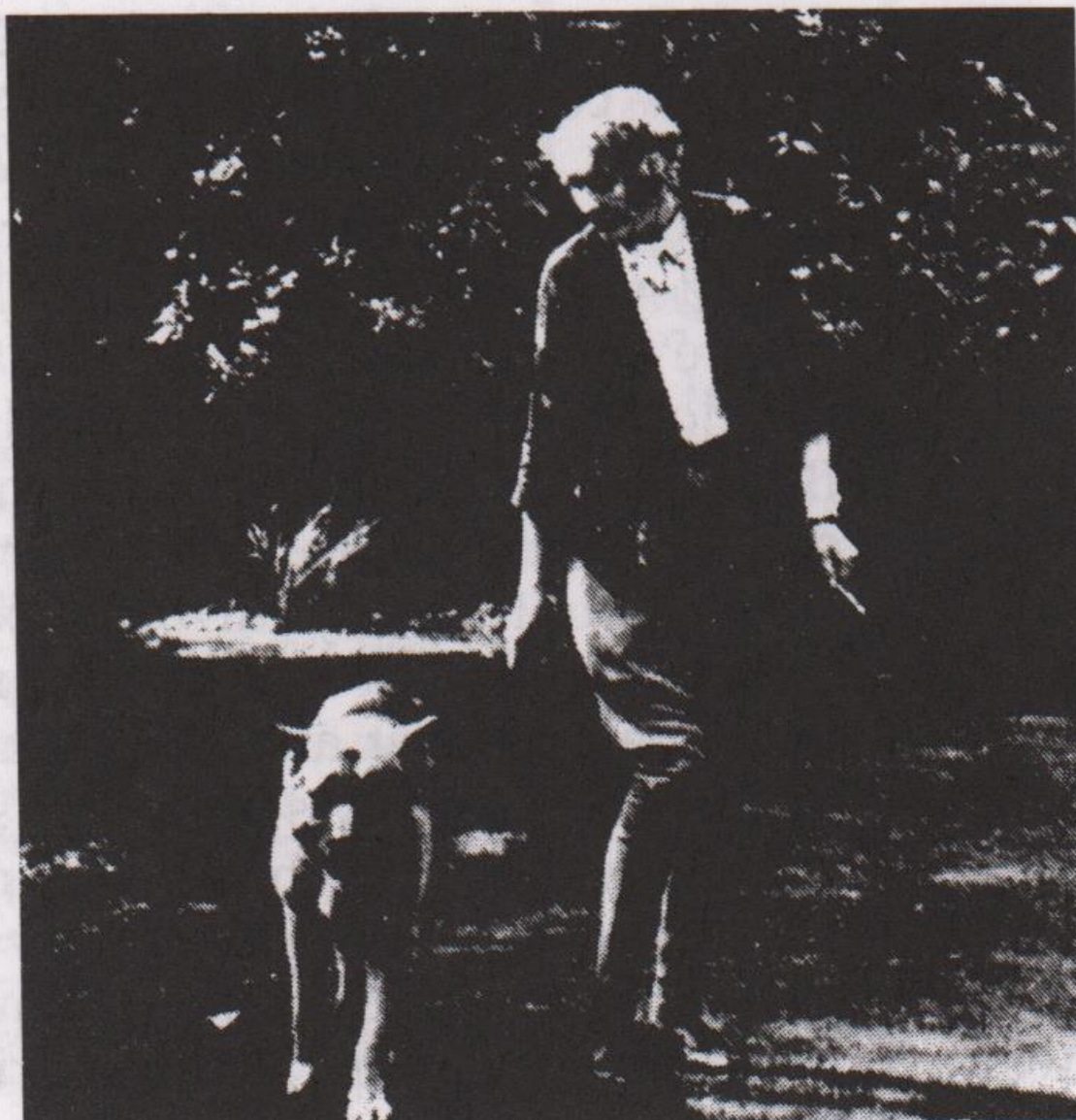
Caring for people in the Mansfield & Ashfield area

Mansfield and Ashfield Positive Support
PO Box 3, Mansfield
Nottinghamshire, NG18 1QT.

Tel: 01623 651351

Memorably Queer

VITA SACKVILLE-WEST



Born in England on March 9th 1892, Vita Sackville-West is a well known character in lesbian history. She married her closest friend, diplomat Harold Nicholson, himself a gay man, and together they had two sons.

Sackville-West is though better known for her multiple talents, as a writer, poet, gardener of great imagination, aristocrat and broadcaster. She is also famed for her many passionate relationships with women, the most famous of which being with writer Virginia Woolf. Vol 3 of Woolf's Letters and Diaries give a detailed picture of their relationship, and Woolf's famed 'Orlando' is said to be the fruit of their affair, considered by many to be the

longest love poem in the English language.

Sackville-West was a powerful personality who lived life with great energy. She was friends with Radclyffe Hall and Una Troubridge, and her journals reveal Charlotte Bronte and Ellen Nussey's love for one another. She died in 1962.

March 2nd, 1874 **Gertrude Stein**, famed American author, known for her open lesbian lifestyle and deliberately experimental writing style. Her writings focused on women, and largely on her lifelong partner, Alice B. Toklas. She died in 1946.

Clare L. J. Lydon

VOLUNTEERS

For people interested in doing voluntary work in Nottingham there is an open meeting at Top Valley Community Centre at 7pm, Tuesday 5th March. Mencap is looking for volunteers to work in its charity shops: phone Linda Doors 0115 9561130. Info supplied by Nott'm CVS.

GLOBE DISCOS

Boston's Globe Discos are now every Friday, £2 pub late nights/£1 normal pub nights. More info from Lincs Switchboard, see page 10.

CAMPIONS SOLICITORS

ACCIDENT?

FREE LEGAL ADVICE

NO WIN - NO FEE

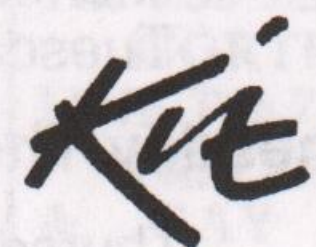
45-47 MANSFIELD ROAD
NOTTINGHAM NG1 3FH
TEL: (0115) 947 6373

FREE CAR PARKING

NEAR VICTORIA CENTRE

NEW BOYZ

Coventry's MESMEN health project has taken on board Colin Boss from Birmingham's BOSS project as the new Outreach Worker, and Ian Lucas, a pioneer Sister of Perpetual Indulgence who becomes the new full time Gay Men's Health Worker. For MESMEN's helpline phone number see helplines on page 10.



2 St. Martin's Square, Leicester
0116 253 9605

Cerruti - Marc O'Polo - Versace -
Jeans Couture - Versus By Versace -
Marlboro Classics - Rockport

DERBY AIDSLINE

Worried/confused about HIV/AIDS?

For confidential advice and information, phone FREE on Derby Aidline

0800 - 622738

Mon & Thur 7 - 9pm
Thurs 2 - 4pm

● Briefly ...

● **Nottingham Bisexual Group** next meet March 14 for a games evening and March 28 for a discussion on non-monogamy. Meet at 8pm in Room 3 at the International Community Centre, Mansfield Road.

● **Harambee**, the group for black LGB men & women meet on Tues 19 March at 45 King St. Leicester at 7pm.

● **Mr. Gay UK** has March heats in Derby - Curzon's Weds 13; Sheffield - The Club Sat 23; Mansfield - The Yard Mon 25. More info from 0113 238 0999

● **The Heshima Group**, the Nottingham based support group for black & Asian LGB of all ages meets at 7pm on Wed 13 March at the Information Shop, 24-32 Carlton St. More info from 0115 958 5111

● **Fruit**, a new monthly LGB boat party in Cambridge with DJ Siraker & friends begins on Sun 3 March. Boarding begins 8.30pm, leave shore 9pm prompt, return 1am on boat 'Georgina' moored on River Cam behind Boat Race pub, Chesterton Rd. Tickets £4/£5 from Town & Gown pub 01223 353791, CPC 01223 500111, Gay Anglia magazine 01733 313542

Holistic Massage

by ITEC qualified Masseur
Secure, Comfortable,
Relaxing,
For more details:
Ring Tim
(0115) 948 0975

FREE AND CONFIDENTIAL

HIV TESTING



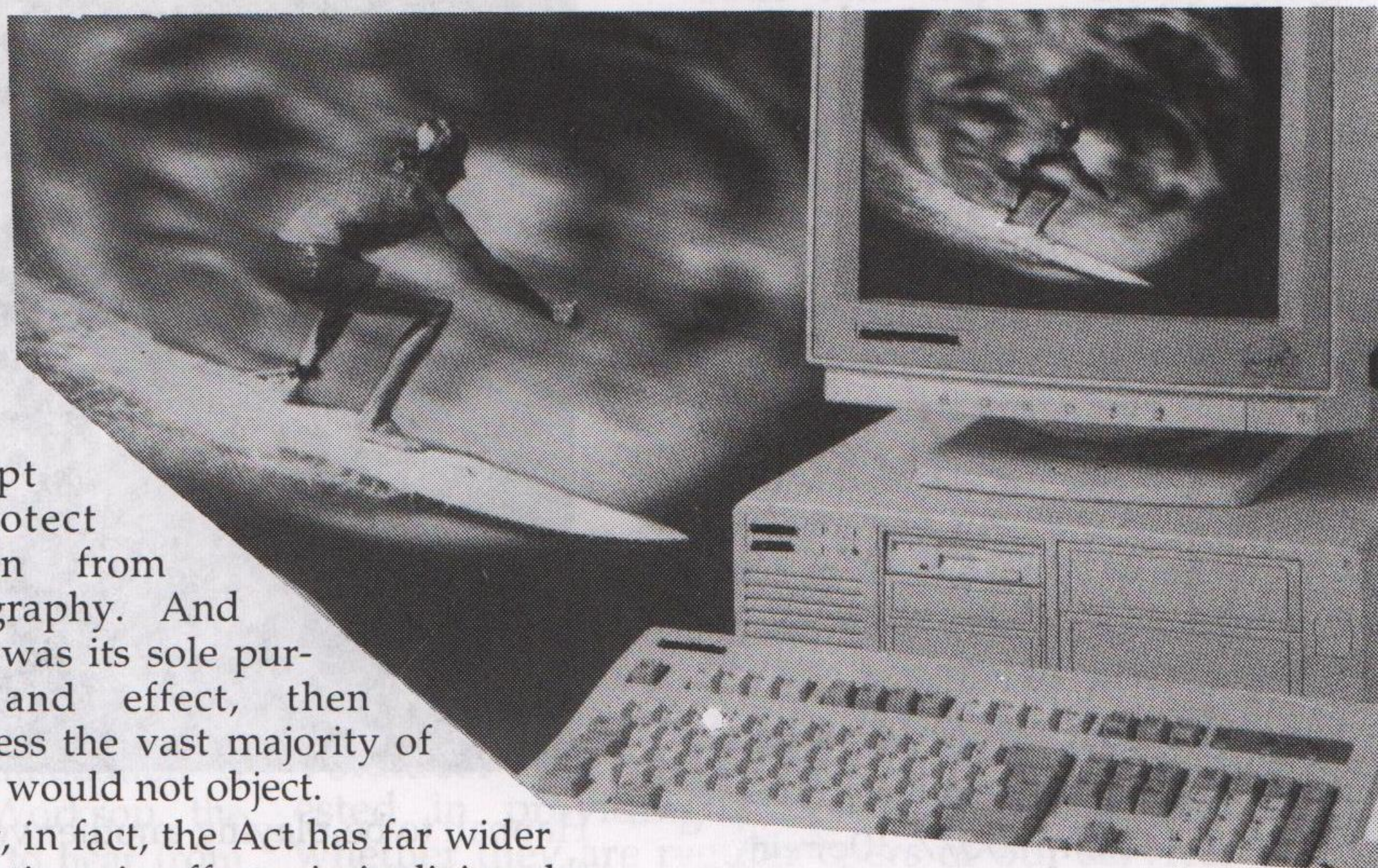
The Health Shop
Broad Street,
Nottingham
0115 947 5414

ALSO FREE CONDOMS,
LUBE AND
HEP B VACCINATION

BIG BROTHER GOES SURFING

Because it hasn't touched their lives yet, most people haven't realised that we are at a truly pivotal moment in history. For 48 hours recently, site after site on the Internet blanked out in protest, until Cyberspace became riddled with thousands of points of darkness. Even commercial sites, like on-line magazines, reducing all their offerings to a single sentence. **THIS IS WHAT CENSORSHIP LOOKS LIKE**

And the reason? New telecommunications legislation in the United States with a pernicious rider called the Communications Decency Act. In an attempt to win support from the telecommunications giants and the religious right in an election year, Congress has rushed through this legislation without either public hearings or expert testimony. Legislation which is already being challenged as unconstitutional and a direct attack on individual, family and community rights. Its supporters claim it is an



attempt to protect children from pornography. And if that was its sole purpose and effect, then doubtless the vast majority of people would not object.

But, in fact, the Act has far wider implications, in effect criminalizing classic works of art and literature, medical and educational material. It would also be illegal to use the Internet to distribute certain information on abortion, sexually transmitted diseases or even cancer of the breast or testes, with fines of up to \$10,000 and two years imprisonment for non-compliance.

You may not have been there yet - but you will. Cyberspace does exist. A virtually limitless new land where people from all over the world can, and in fact have to, interact with each other simply as people. Without many of the barriers that exist in the real world; age, race, gender, ability, sexuality etc. A space that until now has had no power structures or external controls. A space effectively owned equally by all its users. A space that rightfully belongs to the Gay Community as much as to anyone else.

So be warned. We are already being disenfranchised by stealth from this brave new world - before we have even taken possession of it.

Cathy White

Cathy is organising some Women's Internet evenings in March. Ring (0115) 9607684 for details.

anvil press print & design

- ★ Leaflets/Flyers
- ★ Brochures
- ★ Newsletters
- ★ Business Stationery
- ★ Posters
- ★ Booklets
- ★ Stickers
- ★ Carbonless
- ★ Envelopes
- ★ Full Colour

119 Abbey Street, Derby
Tel: 01332 298213

Anvil Press is a Workers Co-operative

Women's Day

Celebration Ball

Saturday 9 March
8.00 - 12.30



City Rooms
Hotel Street
Leicester

DANCE TO THE
LAVENDER CAFE ORCHESTRA
and Line Dancing!

Women only **Bar**
Tickets in advance
£5 Waged/Unwaged £4
Send payment & SAE to:
CBA, 45 King St, Leicester LE1 6RN

● Briefly ...

● **Loughborough Women's Bar** meet 2nd & 4th Mondays each month at the Labour Club, Fennel St, near bus station.

● **Stanford Hall Cinema**, the magnificent Art Deco cinema near Loughboro' is showing 'Meet Me In St. Louis' starring gay icon Judy Garland in glorious Technicolor on Sat. 23 March at 7.30 pm. Tickets £3.50 (£3.00 concs).

● **Sheffield Humanist Society** meet at the Three Cranes Hotel, Queen St on Weds 3 April at 7.30 pm for 8 pm. The speaker will be Carl Pinel and the subject is 'Roots Of Gay Oppression'.

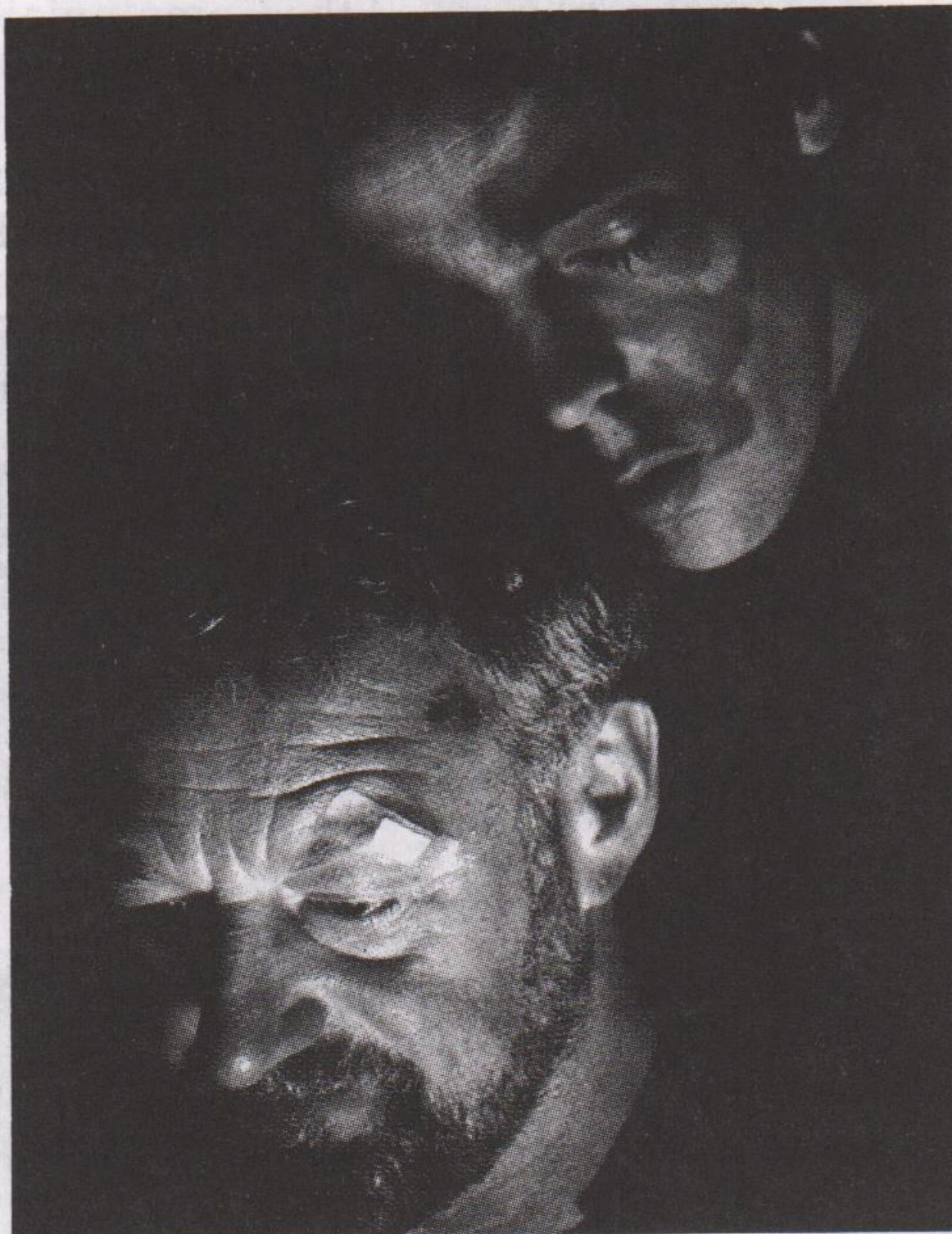
● **Ian Rivers**, Lecturer in Psychology at the University of Luton is running a research project on the long-term consequences of school bullying of LGB people. If you are able to contribute with any experiences, contact him on 01582 489302 or write to Dept of Psychology, University of Luton, Park Square, Luton, LU1 3JU.

● **Unison's East Midlands Region Lesbian & Gay Group** have a meeting on Thurs 14 March 7.00/7.30pm in Nottingham. More info from Barbara Broughton on 0115 956 7200

REVIEW

Madagascar Skin

ranging from a battered 2CV covered in seaweed; a wind up gramophone playing Mozart; shots of pebbles on the beach. All very Fellini-like.



Hannah to be playing another version of Four Weddings. Go expecting more questions than answers.

Nick Tyldesley

This is a film for arthouse movie buffs who are skilled at deconstructing a range of images

The story is about Harry (John Hannah) who finds he is ignored at gay clubs because of his birthmark - the shape of Madagascar. He takes off to Scotland to seek solace. Driving onto a beach he finds Flint - buried up to his neck under a bucket as the tide comes in. The two end up sharing a country cottage and after some gentle sparring begin to develop a friendship that leads to a certain amount of sexual teasing by Flint.

Harry, still a virgin, confesses his attraction for Flint to the camera. When the cottage is reposessed, Flint and Harry are shown laughing and embracing in the fields. We are left to guess at the outcome.

The film shows relationships need not be miserably intense. It is reassuring to be given the message that the inner man matters more than surface appearances. Enjoy the well photographed images but don't expect John

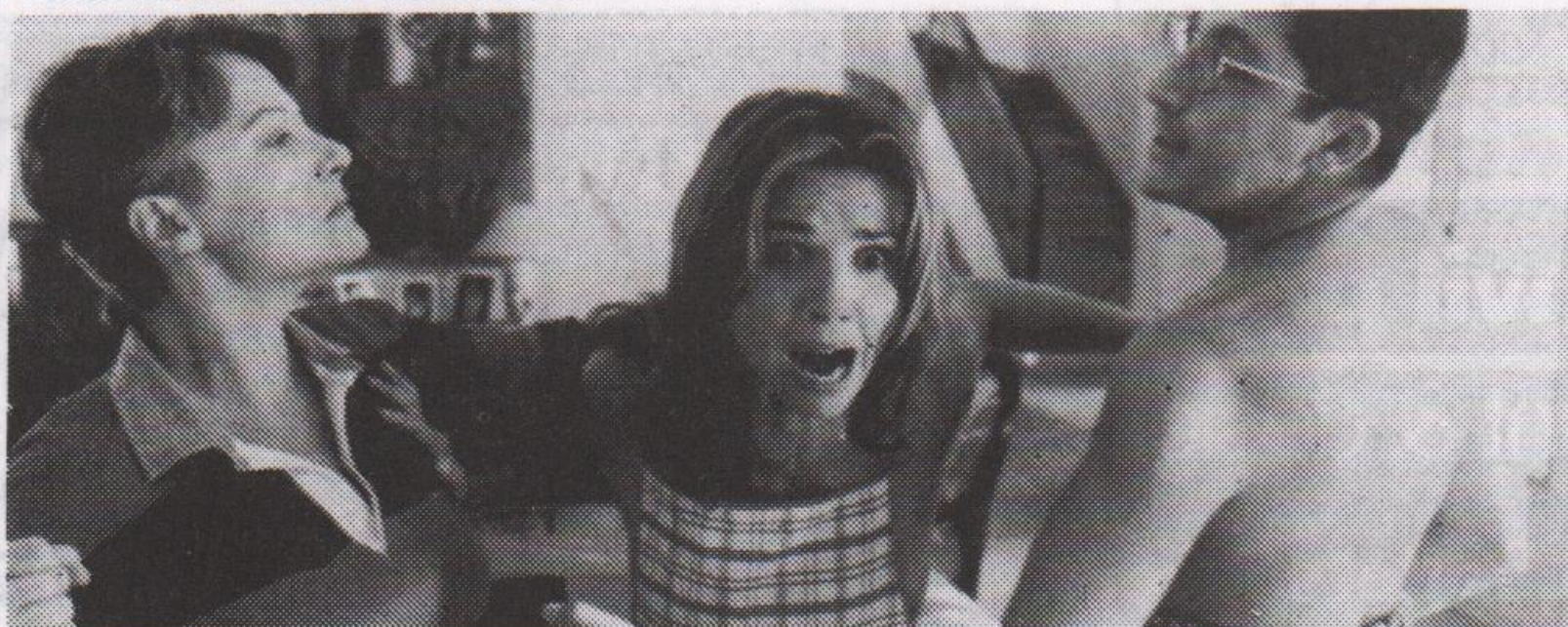
Broadway

Wed 13 - Sun 17 March

The Most Desired Man 18

In German with English subtitles

Axel is a dumb hunk who has both men and women slaving at his feet in this hilariously fizzy comedy of sexual confusion.



Fri 22 - Sun 31 March

French Twist (Gazon Maudit) 18

In French with English subtitles

A superb menage-a-trois with a twist. Butch dyke Marijo falls for Loli the wife of chauvanistic Laurent. Marijo moves into the family home and begins to compete with Laurent for the love of Loli as the two try to outdo each other with progressively more outrageous displays of machismo.

Broadway Cinema, 14 Broad St, Nottingham.
Tel (0115) 952 6600/6611



outright! in Braille

For £6 (£5 without personal ads) including postage and packing. Phone for more details: 0115 978 0124.

A warm welcome awaits you from Andrew and Polly at

THE KINGS HEAD

Emery Lane, Boston

01205 362926

METRO CINEMA

Green Lane, Derby. Box office: 01332 340170

FLOWER OF MY SECRET (15)

Director: Pedro Almodovar, starring Marisa Paredes, Spain, 1195, 110 mins

Perhaps Almodovar's finest, most complex film to date deals with his familiar theme of a middle-aged woman beset by domestic trials and tribulations. Around Paredes' magnetic central performance, he weaves a terrific comedy drama about the importance of hope and the mysteries of relationships.



Fri 22 - Wed 27 March, Fri & Sat at 8.30, Sun at 8.00pm, Tue & Wed at 6.00pm

REVIEW

JENNY ECLAIR at Nottingham Playhouse

Picture this. It's one of

those cult arty films where the camera scans a theatre audience who are all grotesquely laughing. Slowly it focuses in on two central seats containing two completely still, stony faced women. That was the Jenny Eclair experience for my friend and myself. No - it isn't that we're a couple of dour lessos (we laugh quite a lot in general) - but for some reason - we were not greatly amused at the Perrier Award winning comic's 'Top Bitch' show.

The night started badly. The warm-up comic cracked one too many jokes about his punching technique with all the magnetism of a pissed-up bloke that you can't get rid of



in a pub. When we did finally get shut of him we got Jen with joke after joke about sex with blokes. My mouth did manage to twitch upwards a few times at her jokes on being a useless mother - and my friend apologised for laughing twice in one and a half hours.

It was like being a vegetarian standing in front of one of those meat auction vans - you're just not interested. Plenty of other folk were - mostly straight, all sitting in an alcoholic daze splitting their sides. As for me - it wasn't so much a night out at a comedy show - more like a ritual bonding ceremony for heterosexual women nearing a certain age - and as I say - I just wasn't interested.

Debbie Helme

GAY IN WORKSOP

Living in a small town can be hell if you're gay. If you're trying to escape from home or from offensive neighbours it can be a nightmare trying to find somewhere safe to live. The Bassetlaw Homelessness Forum often gets requests from gays and lesbians for accommodation and has difficulty finding suitable places to recommend. If you have accommodation to rent, a bedsit, room, flat etc, and you live in Worksop, the Forum at 59a Bridge Street, Worksop, would like to hear from you on 01909 486762.

You can also get *outright!* from the Forum, and from the foyer of the Regal Arts Centre in Carlton Road, Worksop.

YOUR FRIEND-LY LIBRARY

Want to borrow some lesbian/gay positive books but can't find any in the Council Libraries? Then you may be interested in Nottingham Friend's new facility. They're offering a lending library service to Friend volunteers, users and non-users on payment of a small deposit. Volunteer Tim Blades said: "We are particularly interested in providing people with positive information, whether they are regular users of our services or not and it's something we've been planning to do for several years". Contact Friend c/o CVS, 33 Mansfield Road, Nottingham NG1 3FF.



LEICESTERSHIRE AIDS SUPPORT SERVICES

"WOMENS HEALTH IN PROSTITUTION PROJECT"

DEVELOPMENT WORKER (Part-time, 22 hours)

Ready for a demanding, varied and challenging job? Can you work under

pressure to help organise, develop and provide services for women working as prostitutes in Leicestershire?

You will act as Deputy to the WHIP Project Manager and

- * Co-ordinate volunteer workers for outreach work;
- * Motivate and support volunteers delivering services;
- * Develop a peer-support network and health promotion work with vulnerable young women.

You will need: Excellent communication skills, a commitment to equal opportunities and an understanding of varied lifestyles.

Qualities include: Enthusiasm; drive; flexibility; a sense of humour and the ability to work effectively on your own initiative in a dynamic and often stressful environment.

Experience of issues around prostitution, office procedures, familiarity with computers/word processing and working with prostitutes, other marginalised people and/or volunteers would be desirable. A clean driving license would be an advantage.

Salary: APT&C Scale 4 (Point 18-21, starting £7,183.80 for 22 hours). The appointment will initially be for one year. Continuation will depend on future funding. Hours of work will usually be Mondays and Wednesdays plus one or two evening sessions per week.

Closing date: Thursday 14th March (4.30pm)

Interviews: Saturday 23rd March.

FOR FULL DETAILS AND APPLICATIONPACK CONTACT US NOW!

Tel: (0116) 255 9995

(Mon-Fri, 10.00am-4.30pm)

LASS aims to be an Equal Opportunities employer and welcomes applications from all sections of the community - full statement with application form.

LASS is a Registered Charity. No. 1023914



NOTTINGHAM COMMUNITY HEALTH NHS TRUST

SESSIONAL OUTREACH WORKERS

REF: 181/95

(Gay and Bisexual Men)

SALARY: £8.25 per hour

The GAI Project is the gay and bisexual men's outreach project working to reduce the transmission of HIV in Nottingham. We wish to recruit a small number of male sessional workers to work alongside the three full-time workers. This will involve occasional work in one or more areas of the GAI Project's outreach. Mostly working evenings or weekends. We are also looking for sessional workers to be based in North Nottinghamshire to assist with a project later this year.

You need to have knowledge, understanding and awareness of HIV/AIDS, and sexual health issues affecting gay and bisexual men. Flexibility and reliability are essential.

For an informal discussion please contact Simon Wright, GAI Project Team Leader at the Health Shop on

0115 947 5414.

This work is exempt under the Sex Discrimination Act Section 7(2)(e).

Closing Date: 22 March 1996.

Nottingham Community Health is committed to Equal Opportunities in Employment and operates a No Smoking Policy.

An application form and details for the above vacancies are available from the Personnel & Development Directorate, Linden House, 261 Beechdale Road, Aspley, Nottingham, NG8 3EY or telephone 24 hour Job Line Service (0115) 934 5299.

INTERVIEW

Our Private Idaho

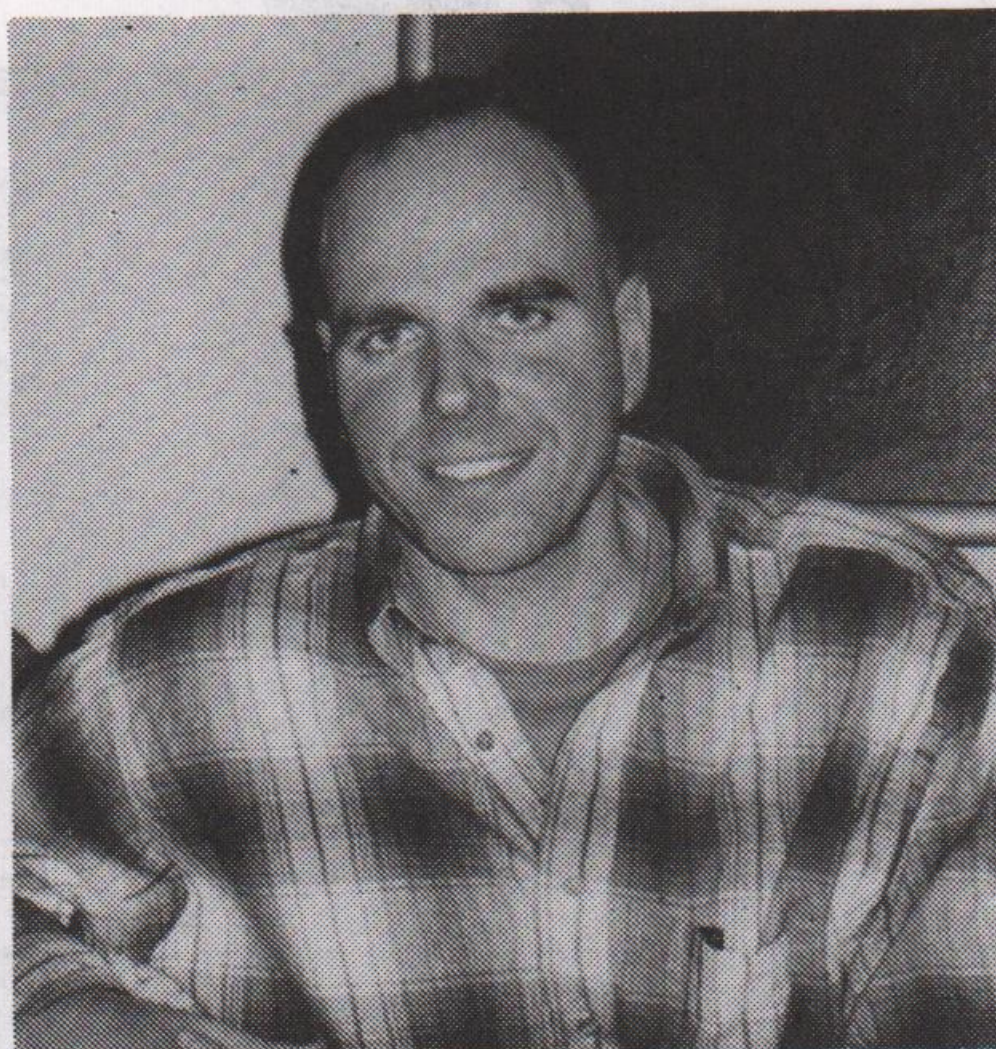
Danny Gallagher a New Yorker living in London is involved in a unique documentary film project, which charts the anatomy of an anti-gay campaign in a rural state known for its strong tradition of individualism and self-determination. What began for Danny as a chance stopover in Idaho ended up with his decision to make a film of a homophobic backlash over a two year period.

The Idaho Citizens Alliance is a conservative political group whose platform is to deny civil rights to lesbians and gay men in Idaho and would prevent gays being hired for work, prohibit public discussion of homosexuality and gag HIV/AIDS education.

Danny's ambitious film, a historical document, charts how people from all walks of life and on both sides of the divide were dealing with homosexuality, letting them speak for themselves, with the viewer as judge. The completed film will investigate the strategies these different groups pursue in attempting to create communities for themselves within the national makeup. So with £10,000 raised from friends, colleagues and his own savings, Danny and co-director Clare Muller produced a 14-minute pilot film resulting in Idaho Public Television interested in buying the completed version.

"At first it was quite strange going to a small rural community, where it takes at least a couple of years before the

locals trust you". But powerful statements from the pilot show the urgency of completing this film. One 18-year old had testified to contemplating suicide over a four year period, whilst others said they felt they would have to leave Idaho if the campaign was lost. Lesbian comedian Robin Tyler couldn't contain her anger at the 'dead queer' sign at an anti-gay rally. "I'm Jewish," Tyler said, "If that sign said 'The only good black is a dead black,' we'd be kicking your fucking asses. So you're very lucky we're non-violent."



Danny (pictured) is no stranger to the visual media having worked for C4 TV's 'Out on Tuesday'. He aims to keep documenting the ICA's campaign, which is re-emerging in this presidential election year. "I'd like to find out if the people of Idaho have changed their views in the past two years and see what strategies have developed in the christian, conservative and liberal and gay communities", he said.

But to finish the 54 minute unbiased documentary film, and follow it through to election day, he needs to raise at least £30,000. A donation of £10 would purchase twenty minutes of Hi8 videotape, whilst a donation of £100 would provide him with three and a half seconds of final edit - every second counts! Anyone wishing to donate should make cheque payable to 'Idaho Project', Flat 53, 25 Gresse St. London W1P 1PD.

GAY MEN'S CROSSWORD

Yes, here (almost) as promised are the answers to last month's crossword by PD and DH

Across: 1. Grope, 7. Nitrates, 8. Navel, 10. Lavatorial, 12. Renegade, 14. Spar, 16. Amen, 17. Rehearse, 20. Masochists, 23. Semen, 24. Underage, 25. Hymns.

Down: 1. Gender, 2. Peel, 3. Viva, 4. Orion, 5. Strippers, 6. Ostler, 9. Large, 11. Underside, 13. Doe, 15. Gents, 16. Armour, 18. Events, 19. Score, 21. Iago, 22. Sexy.

A FORUM FOR CHANGE...

Nott'm Lesbian & Gay Forum met in February to discuss the progress of the Community Safety Working Party which looks at issues of violence and crimes against LGB (to join call Tim on 0115 947 5414). A meeting on 12 March at 7.30pm at the Health Shop will discuss issues around education and young people's services with reps from Notts County Council, open to anyone interested.

OUTPOST!

You can have **outright!** delivered to your home every month for a year - for just £5. Send a cheque/postal order to **outright!**, PO Box 4, West PDO, Nottingham NG7 2DJ.

Coming soon to the East Midlands

A series of workshop weekends for gay/bi. men offering Massage, Meditation and Circle Dancing, costed on a sliding scale, for more details ring **Tim (0115) 9480975.**

Leather, Denim, Uniform

Interested in a new group being formed in Lincolnshire? Then contact us through Lincs. Lesbian & Gay Switchboard on Thursday and Sunday between 7pm and 10pm, and ask for referral to:

LINCOLN LEATHER GROUP

JUSTout

Coming out can be scary, bewildering, terrifying, exciting, empowering, brilliant....and something you don't have to do on your own. JUSTout is a free course of five workshops run by Nottingham's GAI Project for gay & bisexual men of any age who are coming out for the first time. The group will be completely confidential and allows everyone to move at his own pace in a relaxed and friendly atmosphere, creating a chance to make new friends and have fun. The workshops usually run over five Wednesday evenings, starting at 7.30pm. If you want to take part in the next JUSTout or find out more about it, contact the Simon or Tim at the GAI Project on 0115 947 5414

INTERNATIONAL WOMEN'S DAY

Evening Cabaret at Nottingham Women's Centre
See Briefly ... page 2 for details

Nottingham City Council LGB Workers Support Group

Regular monthly activities.

- **19 March** - evening meal & social
- **15 April** - lunchtime meeting.
- **14 May** - details to be arranged

Contact Rachel on 0115 940 5218 or Simon on 0115 948 3500 ext 6402.

Welcome abroad

the complete gay travel centre

**Gay Holidays
City Breaks
Worldwide Flights
Accommodation
Car Hire/Fly Drive
Channel Crossing
Theatres/concerts**

0116 291 5853

Mon - Fri 8.00 - 8.00 • Sat - Sun 9.00 - 6.00

121 Kirby Road, Leicester LE3 6BE
IATA . TGTG . T0256

outburst! special

Thankyou so much for your decision not to carry bi-phobic contact ads. This is a significant step in encouraging acceptance of the diversity of the queer community.

Claire, Sheffield.

I gather that you have made a positive stand in your recent issue to stop discrimination against bisexual people. As one, I wanted to write and thank you - if only more publications could be like you. You're brilliant!

Annie, London.

Just a note to say thanks for your support re: your policy on adverts (i.e. outlawing the words 'No bi's').

Liz (a bisexual woman), Nottingham.

Everyone is at it. It's fine to be bi, fine to be a Lippy, fine to be femme. For those of us whose politics mean we are lesbians who don't sleep with men, who have chosen not to wear Max Factor and will never don high heels - can we be a bit more dyke positive and cut out the 'No butches' in your classifieds?

Hopefully,
Sarah Meakin, Nottingham.

While we're being positive as regards Outright's classified ads "No butches" would seem to exclude women who prefer not to present a 'feminine' image (or pass as straight?!). I think butch dykes should not be excluded in this way. I think ads should make a positive choice - not a negative exclusion.

Alice Grigor, Nottingham.

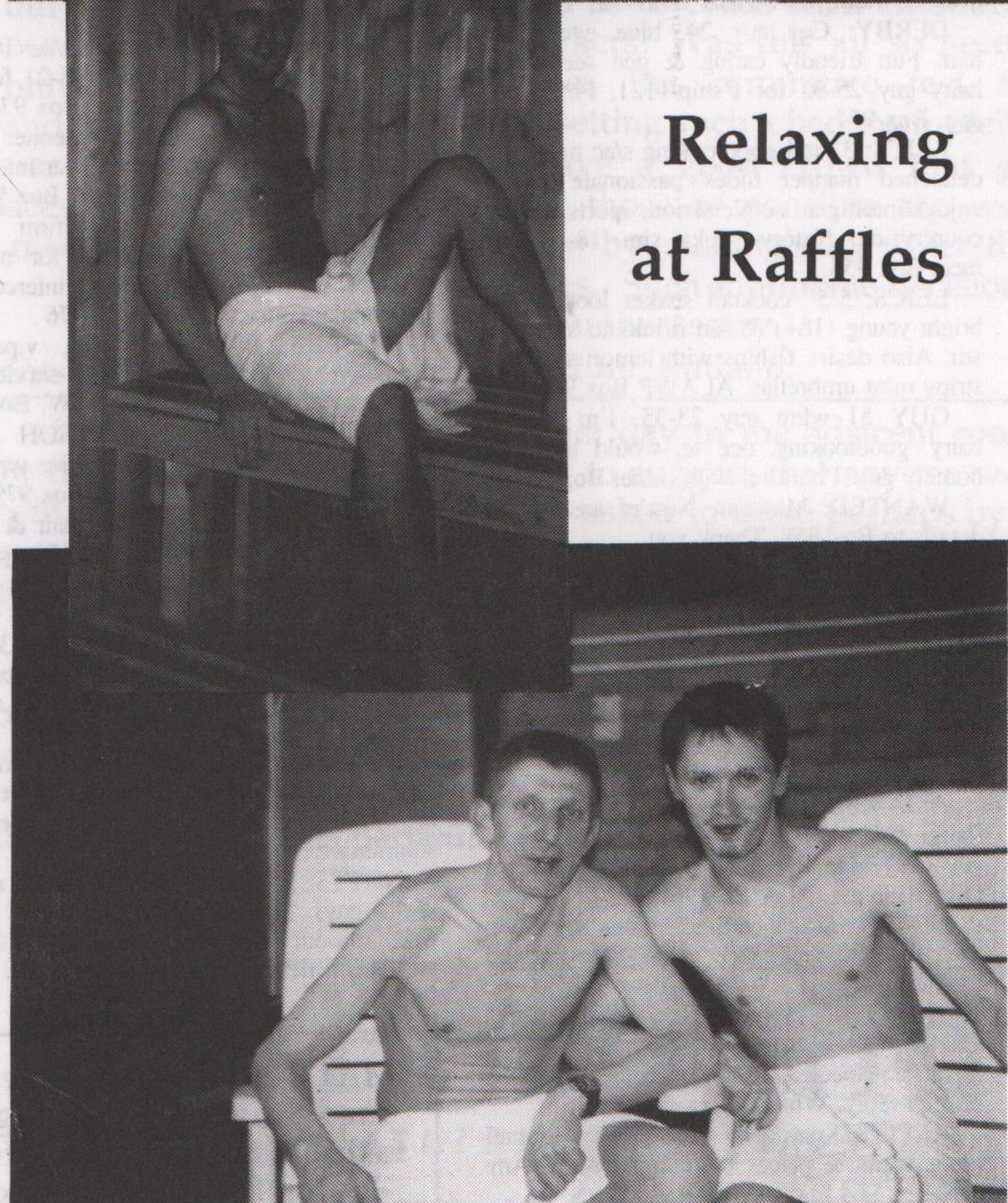
Alice Grigor has put it in a nutshell! Please remember when wording your ad to make a positive choice and not a negative exclusion.

Sheffield Women's Cultural Club

Bee's Quiz every Thursday, 1st Fri of month, disco 'til 1am. Sat 9 March, Auction at St. Peter's Church Hall, Machon Bank, Nether Edge, from midday. Proceeds in aid of Club. 9 March, disco/party, Ponds Forge, Skyline Suite, £250/£150, 8pm-midnight. Fri 15 March, Women in Ireland Group, 7-8pm, feedback from them followed by singing, music and performance from 8.30pm-1am. Sat 16 March, International Women's Day Celebration, Radford Club, Beet Street (off Broad Lane by Jessops Hospital), see item elsewhere. Fri 22 March, Clare Mooney, lesbian political singer, Site Gallery, Paternoster Row, next door to Cultural Club, 8.30-11.30pm.



Relaxing
at Raffles



FLAUNT IT!

Got something to advertise?

Put it in **outright!**

- * Long established - now in our sixth year
- * 4,500 copies a month
- * ninety five outlets
- * covering Northants, Leics, Notts, Derbys, Lincs and South Yorkshire
- * No VAT to pay
- * supporting the lesbian, gay and bisexual communities
- * Low advertising rates

If you run a business and want to advertise your products or services to the lesbian, gay and bisexual communities, contact us first.

0115 978 0124

RAFFLES SAUNA

- * Steam Room * Sauna *
- * Gymnasium * Hot tub *
- * Jacuzzi * Snax * Large area *

Come and see us soon!

We are open 1pm-10.30pm,
Monday-Saturday

Sunday 2pm-10.00pm

£6 entrance (conc. available)

Unit M, Bradgate Street, Leicester
(off Blackbird Road),
(0116) 251 3308

classifieds

HOW TO REPLY. Seal each reply in a separate envelope. Write the number of the Box you are replying to in the top right hand corner of each envelope. Place them in a larger envelope. **Enclose two loose first class stamps for each reply: replies without stamps are not forwarded.** Address the outer envelope to **Outright**, stamp and post to: PO Box 4, West PDO, Nottingham NG7 2DJ.

men's personal

MATURE Leics guy into keep fit has Lycra gear, taken O & A levels, seeks sim for lunchtime meetings. Box 951

BLONDE blue eyed v. good looking Sheffield male 22 into ragga/lovers/soul seeks gen reliable black male with a cool head & warm heart. ALA Box 952

DERBY: Gay guy 24, blue eyes dark hair. Fun friendly caring & gen seeks sim hairy guy 25-35 for f'ship/121. Ph#/photo app. Box 954

LEICS: 33 tall goodlooking s/ac n/sc cool detached manner hides passionate nature enjoys intelligent conversation, sports, travel, countryside, history seeks sim 18-40 any race. Box 955

LEICS: 5'5" cocktail shaker looking for bright young (18+) & fun drinks to shake or stir. Also desire f'ships with lemon slices & stripy mint umbrellas. ALAWP Box 956

GUY 51 wltm guy 23-35. I'm tached, hairy, goodlooking, occ sc, would like 121 homely guy. Photo ret with mine. Box 957

WANTED: Masseur, Nott'm area. Send details to Box 958. Thank you.

NOTT'M: Gay male wants sports partner to get fit with, so if you're into swimming, badminton, tennis etc, who knows what could happen? ALA Box 959

NORTHANTS: Couple (30) want Roger Black lookalike s/ac escort for birthday treat. Must have good chest & great legs & no inhibitions. ALAWP+ph. Box 960

ASIAN/black guys sought for discreet f'ship & fun by ext. goodlooking tall white guy (19) blue eyes, fit body. Quite inexp. Discretion ass. ALA Box 961

NOTTS: Single retired male, sensitive, n/sc, discreet seeks gen young (18+) friend for caring rel. ALAWP+add. Box 962

SHORT stocky hairy, 47, S. Yorks, seeks younger (18+) partner for mutual pleasures. Limits respected. Photo & full details prompt reply. What's offered? Box 963

RETIRED gay gent seeks sim for mutual home visits & places of interest. ALA. Any age. Box 964

LEICS: Prof male carer 34 with seven years experience would like part-time work in Leics area. References available. Box 965

DERBY/Nott'm: S/ac cultured guy 40 att, n/sc, slim 5'11" blue eyes, smooth, passive seeks younger 18+ active guy for loving rel. Photo app. ALAWP. Box 966

MANSFIELD: 30's, n/sc, s/ac, seeks guys 18-60 for n/str fun & f'ship. ALA. Photo (ret) helps. Total disc. ass. Box 967

BIKER, Notts/Derby area. Am fit, horny 38 y/o, cropped, att & intelligent, seeking sim singles/couples. Leather/rubber a plus. Can accom/travel. Letter or ph#. Box 968

NOTT'M/E.Mids: Loving, att, understanding & demanding 30-something seeks emotionally literate friends & life partner 24-37 for rel's based on honesty, reliability, raunch & cuddles. ALAWPR Box 969

GAY guy Nott'm 56 yrs young, tall slim smooth passive wltm younger active guy 18+

NOTTS: Bi 45 6' slim, into weights, naturism seeks 18-25 training partner. Let me develop your body into something to be proud of. Box 970

for fun times/f'ship, hopefully 121. Must be slim. Please write soon. Box 971

ORIENTAL/Asian? Can all the superb guys about be straight? If you're gay/bi write to gen admirer - let's get to know one another. Box 972

S.YORKS/Derbys/Notts: Regular guy, att, young, tall, into anything you want! Seeks active guys 18-60. You want me? Here I am! ALA promise Box 973

LOUGHBRO': C/shv n/sm s/ac 19 y/o student seeks sim goodlooking 18-21 for 21, pref in Loughbro. Photo please. Box 974

DESPERATELY seeking someone. Leics lad 24, educated, att (allegedly) var int seeks male 24-29 for f'ship, poss more. Box 975

E.MIDS/anywhere: Att 30, firm body, masc, disc, seeks older (60+) for mutual pleasure or maybe just social intercourse! Let's make contact & see. Box 976

S.YORKS: 30's, great butt, v.passive needs w/e, v.we to give thorough service hot & steamy. Can travel/accom. NTW. Box 978

TWO slim, passionate, VGSOH good-looking lads 21/27 seek prof older type for fun/f'ship. ALAWP. We await. Box 979

E.MIDS: Guy late 30's dark hair & eyes, tash seeks guys 18-35 for hot horny fun. V.w/e, hairies, coloured all welc. ALAWP. Box 980

ANYWHERE: Goodlooking guy 38, fit hairy body, med build/height, no.2 crop, own place/car, many int seeks younger 18+ active guy. Photo? Box 981

NOTTS/Derbys/Yorks: Leather master req's novice/inexp slave, most colours except brown. My place or yours. State age/exp in submissive rep. ALA Box 982

NOTTS guy med build smooth active seeks guys 18-early 20's slim build 5'2"-6'2" smooth hairy for massage/CP. Inexp welc, Shirtless photo ALAWPR+Ph. Box 983

MALE 28, 5'6", blue eyes, med build likes driving, fashion, music looking for loving f'ship with male 18-28. Please send photo. Box 984

LINCS: 42 slim passive n/sc seeks 40+ active, poss 121. Tattooes, down to Earth manual workers most sought after. Photo would be nice. Box 985

ANYWHERE: Penfriends sought with poss 121. Me: 33, slim, GSOH. You: 18-26, slim, GSOH, s/ac, s/lk. Gay/bi. Patience is a virtue. PIPR. ALA. Au revoir! Box 986

ANYONE for hugs & cuddles? Briefs/trunks fun, massage, tickling, friendly wrestling. If so, friendly att 30's guy awaits your rep. Shirtless photo app. Box 987

NOTT'M guy 40, fastest shooter in the west seeks Oriental guy, pref Japanese to teach language/customs & have w/end fun. Box 988

NOTT'M gay guy inexp seeks friends 18+, poss 121. Looks unimp. Also into light bondage. Box 989

21 y/o GSOH wishes to meet that special man in my life for 121. I'm very loving & honest, are you him. Box 990

E.MIDS: Caring prof guy 40 seeks f'ship poss 121. Any age (18+)/colour. Pref n/sc. Interests music, cinema, opera. Please write. Photo app. Box 991

LEICS/Notts: 25, sexy, fit, att, w/e, 6' educated, romantic guy seeks tall, sexy dark hair lad 18-23 for fun, f'ship, maybe 121. Photo/ph# app. Box 992

NOTT'M/anywhere: 30 y/o No.2 cut looking for strict Daddy/uncle 40+ for CP, nappy play games with GSOH. ALAWPh. Box 993

E.MIDS: Versatile 40 seeks younger 18+ active or versatile into sport, music, straight pubs, occ scene but pref fun at home. ALAWP+ph. Box 994

TAMWORTH/Burton: 25, 5'10" handsome, intelligent dark haired smooth fit guy, sexy, romantic, caring, gen, seeks sim for f'ship/121. Photo/ph# app. Box 995

NOTTS: Amateur film maker seeks interesting guys & locations for fun project. Make your fantasy a reality. Write with photo if poss. Box 996

NOTTS: 26 seeks younger 18+ guys for n/str fun. I'm tall, slim, c/shv, w/e. Inexp welc. Interests cinema, video, pubbing, clubbing. Also seeking penpals. ALAWP Box 997

MIDS: Mid 30's Asian, sensible yet impulsive, serious yet romantic wltm gorgeous (OK) average gay male 20-35 for gen f'ship/rel. ALA Box 998

STUDENT long hair, goatee, slim, 6' friendly, eclectic, artistic gen seeks student guy for eating out, drinking etc. N/camp, n/sc. ALAWP+Ph. Box 999

NOTT'M: Two 60+ guys, smokers, s/lk, n/sc seek sim local active guys with GSOH for f'ship & socialising. Own home, car, var.int. Exchange visits. ALAWP. Box 200

NOTT'M guy 45, slim, GSOH honest, reliable, caring seeks sim 35-45 for fun f'ship/rel. Can accom. Photo app. NTW. ALAWP. Box 201

S.YORKS/Derbys/Notts: 38, tall, slim, musc, s/ac seeks others for f'ship, poss rel. Interests inc world cinema, theatre, music, walking. ALA. Photo app. Box 202

E.MIDS: N/sc guy just 40!! w/e, tall, slim, vers, educated into the arts, walking seeks med build masc guy 30-45 for 121. ALAWP. Box 203

DERBY/Burton area: Lonely older men, do you often wish you had a soulmate to share time with? F'ship offered, maybe more. ALA Box 204

NOTT'M: 22, tall, med build funloving likes pubs, cinema, videos seeks sim 20-30 for f'ship leading to poss rel. Box 205

SHEFFIELD: 29, 6'. Am I the only gay guy at Rise and love to be...? Looking for 121 with younger 18+ clubber. Looks, race unimp. Box 206

NOTT'M: Prof guy 29 fit 5'10" seeks same, var int, looking to settle in 121. N/sc pref. Photo app. Box 207

NOTT'M: Slim skinhead type 35, passive fed up with scene seeks that special guy any age 18+. Frank letter w/photo ensures quick rep. Thanks. Box 208

E.MIDS: Chubby 40 y/o bi guy n/sm, passive n/sc wltm active guys. Anything goes, safe fun. Colour/build unimp. Prefer mature age. Travel only. Box 209

NOTT'M/Leics: Indian 34, prof, desperately seeking white guy 25-35 for a truly, madly, deeply rel. Interested? Gen reps only. ALA. Box 210

NOTT'M guy 30 seeks men 21+ to meet for dinner parties/social events, hopefully forming a group of 6-8 guys. Photo ess. ALA. Box 211

GEN admirer of older guys!! me 33 GSOH seeking guys 60-80, n/sm for days out or nights in. Your photo gets mine. ALA. Box 212

LEICS: Married 36 y/o ave looks seeks mates & lovers for f'ship & more. Must be understanding. Discretion ass & expected. Box 213

NOTT'M guy 22 fed up with being lonely seeks 121 18-26, rel & honest. ALAWP+ph. Box 214

NOTTS: 36 5'10" slim, dark hair, honest, caring, fun to be with seeks 18+ for loving long-term rel. ALAWP. I can travel. Box 215

NOTT'M: Youthful 60 y/o smooth, slim, reliable, caring, discreet n/sc seeks active guys for safe horny n/str fun. Gen reps please. Can accom. ALA. Box 216

N/STR fun please! You 20's, fit, hairy, big/hunky or cute/chunky. Me: 30's, realistic (open to offers), pleasant, v.gen, hairy, transport. Photo please. Box 217

LEICS: Guy 30's seeks guys for fun/f'ship. Hairy men most welc. Me: med build v.active. Can travel. Box 218

E.MIDS: Fit, tall prof guy, OK looks, 40's, interests inc arts seeks younger 18+ intelligent guy for f'ship, commitment & security guar. Tel? Box 219

HELPLINES

CHESTERFIELD HAND, Mon 1-3pm, Sun 7-9pm. 01246-550550.

COVENTRY FRIEND, Mon, Wed, Fri, 7.30-9.30pm. 01203-714199.

COVENTRY LESBIAN LINE, Wed, 7.30-9.30pm. 01203-717166.

COVENTRY MESMEN, 01203-224090.

DERBY BODY POSITIVE, Tue 10.30am-1.30pm, Thur 11.30am-4pm, 01332-292129.

DERBY FRIEND, Wed, 7-9.45pm. 01332-349333.

DERBY LESBIAN LINE, Wed, 7-9pm. 01332-41411.

DERBY AIDSLINE, Mon & Thur, 7-9pm, & Thur, 2-4pm. 0800-622738.

GRIMSBY/ SCUNTHORPE AIDSLINE, 01724 276660

GRIMSBY & DISTRICT GAY HELPLINE, Tue & Thur, 7-9pm. 01472-251818.

LEICESTER LESBIAN/ GAYLINE, Mon-Fri, 7.30-10.30pm. 0116-255-0667.

LEICESTERSHIRE AIDS SUPPORT SERVICES, Mon-Fri, 9.30am-5pm. 0116-255-9995.

LINCOLNSHIRE AIDS VOLUNTARY GROUP, Mon, Wed, Fri, 9am-9pm, & Tues, Thur, 9am-5.30pm. 01522-513999.

LINCOLNSHIRE LESBIAN & GAY SWITCHBOARD, Thur & Sun, 7-10pm. 01522-535553.

MANSFIELD/ASHFIELD POSITIVE SUPPORT, 01623-26254

NATIONAL BISEXUAL PHONELINE, Tue & Wed, 7.30-9.30pm. 0181-569-7500.

NORTH STAFFS LESBIAN & GAY SWITCHBOARD, Mon, Wed, Fri 8-10pm, Sun 1-3pm, 01782-266998.

NORTHANTS GAYLINE, Tue 6.30-9.30pm, 01604-39722.

NORTHANTS LESBIAN LINE, Tue 7-9.30pm, 01604-39723

NOTTINGHAM LESBIAN & GAY SWITCHBOARD, Mon-Fri, 7-10pm. 0115-941-1454.

NOTTINGHAM LESBIAN LINE, Mon & Wed, 7-9pm. 0115-941-0652.

NOTTINGHAM FRIEND, Tue, 7-10pm, 0115-947-4717.

NOTTINGHAM UNIVERSITY LESBIAN & GAYLINE, termtime Mon, 8-10pm. 0115-951-4999, internal 4999.

PETERBOROUGH FRIEND, Tue & Thur, 7.30-9.30pm, 01733-61499. Answer-phone other times.

SCUNTHORPE GAY MEN & WOMEN, Wed & Fri, 7-9pm, 01724-271661.

S YORKS CONNECTIONS, Thurs 7-10pm & Sun 3-8pm, 0122-673-0703.

SHEFFIELD AIDS LINE, Mon-Thur, 7-10pm, 0800-844334.

SHEFFIELD GAYPHONE, Mon-Wed, 7.30-9.30pm, 0114-258-8199.

SHEFFIELD YOUNG LESBIAN GROUP, 1st & 3rd Weds, 7.30-9pm, 0114 258 1238

WELLINGBORO' GAY-LINE, Thur, 6.30-9.30pm, 01933-223591

E.MIDS: Camcorder guy wants to shoot local lads (18+) just for fun (& a fee if you need one!). Photo please to
Box 220

S.YORKS/N.Derbys/Anywhere: Anyone seeking f'ship rather than A/F? Then please get in touch. I'm 35, gay, gen & lonely. You 18+ wanting the same. ALA. Box 221

HI! I'm an 18 y/o male, 5'1", dark hair looking for f'ship/rel with sim guy. PIP ALA. Gen reps only. Phone no if poss. Box 222

NOTT'M: Gay male 26 seeks partner 20-30 for f'ship poss rel. I'm white, brown hair, greeny eyes 5'8". Interests cooking and travel. Box 223

DEAF guy 43 seeks nephew type for 121. Lonely - write me with photo. I will answer your reply. Write me soon. Box 224

MONT ST. MICHEL

(4 miles) BRITTANY

B & B, vegetarians welcome, also cottage for six. Available all year, idyllic & peaceful setting.

Tel: 0033 99 80 29 11

BATHLEY GUEST HOUSE

EXCLUSIVELY GAY

Tea/coffee making facilities in all rooms. No restrictions.

Own key, plus
 FREE admission into
 Admiral Duncan.

**101 Bathley Street,
 Trent Bridge, Nottingham
 0115 986 2463**

**BARRIE
 WARD
 &
 JULIAN
 GRIFFITHS**

SOLICITORS

**5, Clarendon Street,
 Nottingham, NG1 5HS.
 Telephone (0115) 941 2622
 After hours (0115) 960 2324**

OUTPOST!

Have Outright! delivered by 1st class post in a plain, sealed envelope. Send £5 cheque/p.o. for 12 issues to Outright!, PO Box 4, West PDO, Nottingham, NG7 2DJ.

Don't forget - be positive in your wording - see outburst! on page 9

mixed personal

SLIM att bi couple early 20's seek sim for same room swapping fun. Social compatibility is important together with erotic sexual attitudes. Photos welc. Box 134

DERBYS couple desperately seeking healthy donor with or without responsibilities. Gen reps only. ALA. Box 135

women's personal

GOTHIC big dyke seeks Caligula fans. Loves velvet, leather, body art, looking for assertive poss alternative cute woman butch or femme, any colour. Box 450

ATT black lesbian seeks att lesbian friends, poss 121. Reqs: warm caring loving personality, occ sc, not afraid to show feelings & talk. Must like kids. Box 451

F'SHIP club: New club starting for over 30's offering f'ship support & social activities. Write for details enc SAE. Box 452

WEEKLY gay women's meeting (social) held for people in or around Mansfield. All welc to attend. For more info write Box 453

NORTHANTS: Fem gay woman 26 seeks sim 18-30 for f'ship/rel. Sincere replies to Box 454

30 y/o mum seeking friends/someone to love. Not too butch, not too fem. I'm romantic gentle honest & faithful, looking for same. Must like kids. Box 455

PRE-OP Transsexual seeks understanding gay male fpr f'ship. PIP. Likes cycling, GSOH, n/sc. ALA. Poss 121 in future. Gen reps only. NTW. Box 456

SUN, sea, sand, exotic places. Wanted: Lesbian 35-45 to enjoy holidays abroad with ALL expenses paid for. Must be single & att. Box 457

ARE you feminine? Prob in your 30's & wltm someone sim to share that bottle of wine with? Then please write. Box 458

LESBIAN Mum 34 single seeks intellectual prof woman for socialising, poss rel. If you like eating out, walking, nights in, children, Sheffield area - write! Box 459

NOTT'M dyke 24 & wrinkling fast seeks friends (M&~F) into loose dancing, football & the Peak District. Box 460

NEW weekly gay women's social meeting now being held in Mansfield. Everyone welcome. More info from Box 461

33 y/o woman, married, Christian & gay seeks sim to share mutual problems & exp's. Sth. Notts area. Box 462

FEMININE, timid, post-op TS seeks both good friends & partner 28-35 (state which). Children welcome. Help me gain confidence & a life. PIP. Box 463

I'M single, early 40's, working, own car, come thru' many fights but lost in love. Want to share var int. Any race. Box 464

ME: Nott'm Lesbian 40's prof, n/sm, sensitive, available. You: 35+, fem, indep, wanting f'ship, mutual support, maybe more. Let's dance to a new beat. Box 465

I want to love & be loved! Non-exclusively, emotionally, mentally, physically, spiritually, awarely, politically, sensually, honestly, sexually - all of me! I dare you! Nott'm. Box 466

BOYISH Lesbian 22 needs new friends, poss rel, any age, GSOH but shy at first. Write soon. PIP. Sheffield area. Box 467

GAY female. Am I the only one out

there? VGSOH. Animal lover, n/sm, sports, music, pubs, candlelit meals in/out. Photo please. Box 468

APPROACHING sell by date. Is there a sincere, caring, att nurse 40's for f'ship/rel mature prof, var int. E.Mids, must like dogs. N/sm. Box 469

TALL blonde att femme 20 seeks slim for fun frolics & good times. Must be positive, GSOH & experimentative. Photos essential. Don't delay. Box 470

Butch woman 22 seeks fem women for nights in/out. Love animals, loving, caring. Write for your special woman. Box 471

accommodation

NOTT'M: Forest Fields/Sherwood: Self contained flat or house share in tolerant house urgently req'd by arty female musician. 0115 978 4459

NOTT'M: Room in luxury new det 4 bed for n/sm prof. All mod cons, quiet location close to city. £175 pcm + bills. Paul Howard 0115 958 5651

SHEFFIELD, Meadowhall: Gay male 28 GSOH offers accom in 2 bedroomed house, to share with him, GCH, all mod cons. £45 pw. ALAWP. Box 71/A1

NOTT'M: Flatshare offered. Friendly down to Earth bloke looking for flatmate. Must be employed & pref 30+ (I'm 35). Own room, share rest of flat. £30 pw. Mark 0115 958 3526

NOTT'M, Hucknall: Room to rent, lesbian owner. V.cosy & comfortable, CH, use of all facilities. Working person pref. £170 pm inc exc phone. 0115 957 7654

DERBY: 1 bed flat suit single gay guy. £55 pw exc 01332 370319

WANTED: Accom 10 miles radius of Notts for single Lesbian 29. Pref to share with owner. I'm clean & tidy with good ref's. Box 71/A2

**LOUGHBRO', Woodhouse
 Eves: Rooms in large shared house near regular bus stop.
 Suit student/prof.
 £150-200pm.
 Anthony 01509 890093**

Brenda extends a warm welcome to all lesbian, gay & bisexual customers at the

STAG & PHEASANT

**Lower Parliament Street
 Nottingham**

Tel: 0115 950 6414

**Usual pub hours:
 12-3pm / 7-late**

messages

CODE sequins mobile disco. Ideal 18th/21st birthdays engagements & party nites. Call us for a chat 0115 975 6701. Tonight it's party time it's party time tonight!

AMANDA please write again to Box 429. You left wrong phone no. I'm still seeking the girl of my dreams!

USE the lead in your pencil! Publish & be damned! Outwrite & outrage on Monday night. Martin: 01332 361746. Derbys LGB writers group.

WANTED! Books on all subjects bought in good cond. Cash paid. Will collect. Please tel 01246 208411 anytime with details.

CLARE Garland. I love you loads. Please marry me! Always on my mind, forever in my heart. Love Zeph XXX

R.J. Leicester, I hope things are working out for you and you're happy. I'll always be here if you ever need me. Love, Sweetie.

ADMIRAL Duncan, Sat. 10/02/96. You: Flat top chap, me: "Bootboy". We chatted for 5 mins, I'd like to go for beers with you, please write. Box 71/M1

COPY DATES

No. 72: 22nd March

No. 73: 26 April

No. 74: 24 May

PUBLICATION DATES

30 March, 4 May, 1 June

HOW TO PLACE AN AD. Complete the form below. Write clearly please, and punctuate! Keep ads short & sweet: **max 24 words** We may refuse or amend ads. **One free ad per issue, must arrive by 21 March. Enhance your ad in display for £4.** Commercial advertisers write or phone for rates.

CLASSIFIED ADS

Complete and return to Outright,
 PO Box 4, West PDO, Nottingham, NG7 2DJ.

| | | |
|--|--|--|
| | | |
| | | |
| | | |
| | | |
| | | |
| | | |
| | | |
| | | |

Please tick category: Mens Womens Mixed Accom Messages **Display (enclose £4 cheque/PO)**

Name.....

Address.....

Post code.....



Friday Night at Marsdens



27 BURLEY'S WAY, LEICESTER. 0116 262 3384
Opposite St. Margaret's Bus Station

Monday 8th April PINEAPPLE AID

Strippers every Sunday

Disco every Wednesday,
Thursday, Friday,
Saturday 'til 2am

Any 4 bottles of beer, £5
(Tue, Wed, Thurs)

Doubles, £2.20 B4 10pm
every day

Leicester's liveliest pub

MARSDEN'S BAR

13 Marsden Street, Chesterfield 01246 232618

Marsdens Bar are pleased to announce
the arrival of Lyndsey, Sheila and Di
(ex. The Manhattan Bar).

Monday - Back in Time with Dayle

Tuesday - Quiz Night - £20 to be won
every week

Wednesday - STRIPPERS

DJ's Lyndsey & Dayle

Thursday - DJ Lyndsey

Friday - DJ Lyndsey & Promotions Night

Saturday - DJ Lyndsey

Sunday - Cabaret Night - DJ Lyndsey,
Jim and Bob

3rd March - DAMIAN

(Time Warp - Rocky Horror Theme)

10th March - CLARE & CO. Fabulous Drag

17th March - PRIVATE COLLECTION

24th March - BLUE STEEL

31st March - P.A. SAM WALKER

7th April - SISTERS SLIM