

# outright!

may 1996

issue 73

for gays, lesbians and bisexuals

free

## DAN PARALYSES CITY

Nottingham's rush-hour was paralysed on 29th March, as members of the Disabled Action Network mounted a siege of the city centre, protesting at the Council's lack of accessible transport. All central approach roads were targeted, with disabled people either handcuffed to buses or sitting strategically in front of them. This was DAN's sixth zap and their largest protest to date. Further actions took place at Midland Rail Station and outside Kenneth Clarke, MP's surgery in West Bridgford when wheelchair users were dragged from their wheelchairs and arrested.

One of the co-ordinators of the action, out-lesbian activist Sharon Mace (pictured) from Oxford said: 'It's crucial for disabled people to be on the frontline. Our action was very empowering'. Nigel Bull, a gay man (pictured page 7) who had travelled up from London said "Our civil rights are at last under discussion and many people were talking about them for the first time. We are here also to represent the thousands of disabled people out of sight, out of mind in institutions."

Disabled people of all ages, with different impairments, and from various political affiliations, and their allies, came together as one from all over the country. Civil disobedience, a



tactic learned from the Black Civil Rights struggle in America with the unspoken message, "Free our people" is a powerful metaphor. The chants of 'What do we want? Civil Rights!'

(continued on back page)

## CENTRE OVERTURNS BAN



Transsexual women are now welcome to attend the Leicester Women's Coffee Bar. That's the official verdict of the Management Committee of the LGB Centre, who met recently and overturned the ban. The storm arose after Stephanie Fisher, a regular user of the women's coffee bar, was asked to leave by a staff member on the grounds that it was believed she was transsexual. A considerable amount of coverage in *outright!* and the Pink Paper ensued, with people taking up positions for and against the ban.

As a result of the controversy the Centre had requested that users write or phone them with their views. The Management Committee issued a statement last month, following their April meeting which said: "All responses which had been sent to the Centre were read and taken into account at the meeting. After a long debate of the issues it was decided to revoke the policy, and allow all women who self-define as women to use the Women's Coffee Bar. The Management Committee is continuing to look at the implications of the change of policy and issues still standing. (continued on page 4)

### BROADWAY



## burn!

*The 10th London Lesbian & Gay Film Festival  
on Tour*

*~ Fri 17 - Thur 23 May ~*

*The best Lesbian & Gay film around comes to  
Broadway Cinema. Ring (0115) 952 6600/6611 for  
more details and a festival brochure.*

*also showing*

*Fri 31 May - Thur 6 June  
Stonewall 15*

*A wonderfully camp love story, set against the background  
of the Stonewall Bar riot in New York.*

*and  
Sun 26 May  
Poison 18*

*Todd Haynes' film that launched the 'New Queer Cinema'.*

*Broadway Cinema, 14 Broad St, Nottingham.  
Tel (0115) 952 6600/6611*

## ▽ Briefly...

▽ **The Nottingham Lesbian, Gay & Bisexual Forum** next meet Weds 15 May at 7.30pm at The Health Shop, Broad St. for representatives of all Notts groups. The second consultation meeting with Notts County Council on education & young people will be on Tues 21 May at 7.30pm at The Health Shop. More info: 0115 947 6868.

▽ **Rapture** present "Dorothy's", Fri 17 May, featuring Britpop & chart dance and "Retro", Fri 31 May featuring 70's & 80's music in the Asylum, Leics Uni, tickets £2 advance from LUSU Union Shop & 45 King St or £2.50 on the door.

▽ **The Heshima Group** for Black & Asian LGB's meet from 7pm on 8 May at the Information Shop, 24-32 Carlton St, Hockley, Nottingham. More info from 0115 985 5111.

▽ **Sheffield Lesbian Link** is a new social club for lesbian & bisexual women. Meetings every first & third Tues, 8-10pm at Women's Cultural Club, Grinder's Hill, Paternoster Row. Info: 0114 249 6969

▽ **Talkback Lesbian Discussion Group** meets at 8pm each second Weds of the month at Nottingham Women's Centre. Next meeting 8 May, the subject being Queer Politics. Lesbian Musicians Group for musicians & singers of all standards meet third Weds of each month at the same venue. Next meeting 15 May at 8pm.

## VAL MORRIS (1961-1996)



Colleagues, clients & friends were shocked and saddened to learn of the death of Val Morris, Nottingham's Clinical Nurse Specialist in HIV/AIDS. After a short illness from cancer, Val died peacefully at home at the end of March.

Val's career in nursing spanned many areas, and her interest in HIV began in the mid 1980's, when she became Ward Sister of the Infectious Diseases Unit at the City Hospital. Her path changed in the early 1990's with the development of the Clinical Nurse Specialist Post. This enabled Val to develop and work closely with people infected with and affected by HIV and AIDS.

Val cared passionately about the health of gay men, lesbians and bisexuals. She did a great deal to improve the way people with HIV were treated by the Health Service and her strength, independence and dedication will be remembered and greatly missed by everyone who knew her professionally or personally. **Simon Wright, Karen Hughes, Manda Maple.**

## QUEER SCRIBES

Queer Scribes, Merseyside's LGB writing group urgently needs funds. Since their first official meeting on 16 December 1994 they have acquired a membership of over fifty writers and have held 37 meetings/workshops as well as organising courses and readings among other events which has helped to raise their profile locally and nationally. As a non-profitmaking organisation they urgently require £550 in order to pursue a series of workshops and to continue the production of their 'Outlines' newsletter. Any individual, business or organisation that feels able to help should contact: The Co-ordinators, Queer Scribes, c/o MASG, PO Box 11, Liverpool, L69 1SN.

## PINEAPPLE AID

Pineapple Aid '96 raised the grand sum of £1,688.87 following its various fund-raising initiatives on Easter Monday. The bash was attended by Susannah Dawson of 'Eastenders'. Philip and Mark would like to thank all their customers old and new who helped achieve this magnificent sum. The money will be used for supporting people living with HIV/AIDS within the city of Leicester. There were ten acts on the stage, plus tombola and a raffle.

## COME TO THE BALL!

Kick off summer by attending the Charity Gay May Ball and support local groups in the process. Derby Uni LGB Society is organising the Ball for Thursday 16th May at Curzons Club, Curzon St. Derby. Said organiser Adrian Piggott: "We hope to raise as much as possible and split it between our LGB society, Derby Friend and Derby Body Positive." Tickets are £2.00 in advance or £2.50 on the door. For more info contact Adrian on (01332) 367317.

## mushroom BOOKSHOP

BOOK OF THE MONTH

## BREAST HEALTH HANDBOOK £4.99

Information on - breast cancer prevention, diet, conventional treatment, alternative treatment and support.

10 Heathcote St, Nottingham  
NG1 3AA. 0115 958 2506

## USE YOUR BUYING POWER

**HIZIKI**

Buying from countries and companies with a commitment to social justice - Hiziki has the widest range of wholefoods, fresh bread, take-away snacks, organic fruit & veg, vegetarian convenience foods, and organic wine & beer in Nottingham. We also stock many natural remedies, cruelty-free toiletries & environment friendly cleaning products.

5% discount for UB40s, OAPs & students on Wed/Thurs.

Hiziki is a workers' co-operative

15 GOOSEGATE, HOCKLEY  
NOTTINGHAM

FOR POSITIVE  
CHANGE

### INFORMATION

around safer sex, HIV/AIDS and other sexually transmitted diseases

### ADVICE & SUPPORT

on all sexual health issues, physical and emotional

### TRAINING

around sexual health and sexuality, anti-homophobia etc.

### LEAFLETS & POSTERS

and other resources

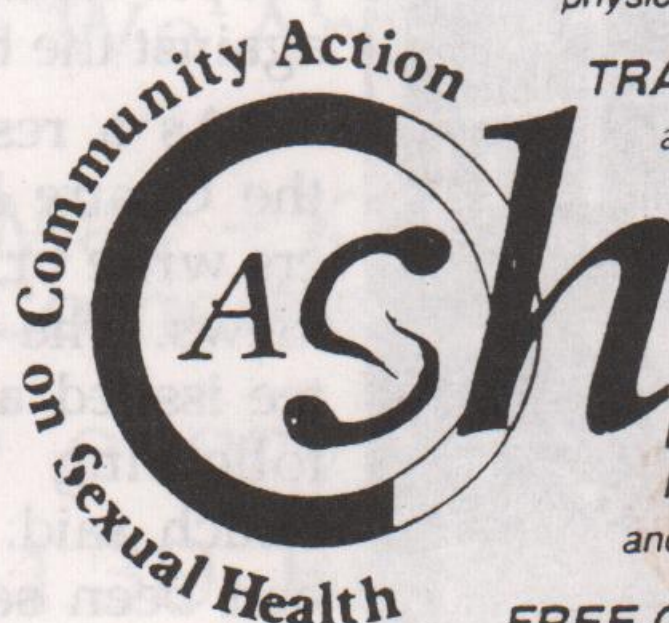
### FREE CONDOMS

also water-based lubricants and dental dams

Available free and confidentially to everyone, regardless of age, sexuality, colour, race, religion, disability or HIV status.

### CONTACT:

Richard Marriott  
4 Rose Hill, Chesterfield  
S40 1LW Tel: (01246) 559431



CASH is part of  
Peak Health,  
North Derbyshire  
Health Authority's  
Health Promotion  
Programme.

## ▽ Briefly...

▽ **Lincolnshire Lesbian & Gay Switchboard's** new Lesbian Line operates each Tues 7-10pm on 01522 535553.

▽ **Mansfield Sexual Health & AIDS Helpline** now operates from King's Mill Hospital on 01623 642 814

▽ **Classic Film Season** 'Black Narcissus', (1946). A special 50th anniversary presentation of this classic tale of seething passions. Set in a convent in the Himalayas and starring Deborah Kerr, David Darrar and Sabu. Saturday, 25th May, 7.30pm, doors open 7pm. (pre-film entertainment on the Wurlitzer Organ). Tickets £3.50 & £3.00 (conc). Come in 1940's dress. Tickets from Victoria Centre Box Office, Rushcliffe Recreation Dept or Loughborough Town Hall Box office.

▽ **Nottingham Young Lesbian Group** now meets every Wednesday evening, 6.30-8.30pm, at Base 51. It is a support group for young lesbian and bisexual women aged 25 and under, which offers a safe and confidential environment for advice, fun and a chance to meet other young women. Contact Kate or Janet on 0115 952 5040, Base 51 Glasshouse, St. Nottingham, NG1 3LP.

▽ **Socialising in Lincs.** Then maybe GLOBE is for you. Want to meet others in a warm, safe and friendly environment? House parties, organised trips out. Over sixty members - people welcomed of any age. You can make contact via Lincs. Lesbian & Gay Switchboard on 01522 535553.

## BARE FACED CHEEK

Evocative! Provocative! That's how critics responded to dancer Javier De Frutos who recently took London by storm with his most recent two part piece 'Sweetie J - Meeting J.' Clever and ultimately subversive, Javier de Frutos dances naked throughout save for a spoon and four equally naked light bulbs. De Frutos says he finds nudity comfortable and that the effect is asexual. 'Sweetie J' is a highly romantic fable of love touching tenderly on the mysterious dream world where everything comes true. In contrast 'Meeting J' explores passion and vulnerability, the vision and behaviour of an identity.

Now there's a rare chance to catch Venezuelan-born De Frutos in Nottingham as part of this year's NOTT Dance festival. For dance lovers the festival is an unrivalled opportunity to see some of the hottest choreography around. Other recommendations include a double bill from Wayne McGregor and Russell Maliphant in two new fierce solo pieces.

**Saturday 11th Russell Maliphant/Wayne McGregor, 7.30pm Bonington Gallery £6.00/£3.50.**

**Friday 17th Javier de Frutos, 7.30pm Powerhouse Studios £6.00/£3.50 concs.**

## THE SPYCE OF LIFE!

"Putting the SPYCE back into safer sex", is the campaign being promoted by the West Midlands Black lesbian, gay and bisexual group - SPYCE. Spyce's safer sex campaign was first launched in December 1994 at a very successful social held at Peacocks, in Birmingham.

The aim of the campaign is to increase awareness about the issues surrounding homosexuality in the black communities and promote safer sex. SPYCE was set up in just over a year ago, to provide support, advice and a social network to all black lesbians, gay men and bisexual people. The campaign has been praised by supporters for its positive message. "It's going to be hotter than a Vindaloo!", claimed a Spyce organiser, "It's time to confront issues, tackle the terrible taboos of sexuality in all communities".

Regular monthly meetings take place at 7pm, first Wednesday of the month, (new members welcomed from 8pm) followed by a social at a nearby pub. By phoning (0121) 622 3965 (ansaphone) you can be put on their mailing list or write to BOSS, 146 Bromsgrove Street, Birmingham, B5 6LR.

## MACEDON TRUST

### Are you a homeless gay or bisexual man?

By homeless we mean have no accommodation or perhaps you are unable to stay in your present accommodation, due to harassment or discrimination, relationship breakdown with parents or family, or for any other reason. If so we offer low-level supported accommodation in safe and secure housing within the Nottingham city area.

Need to know more? Please contact us between 9am and 5pm Mon-Fri on: (0115) 924 5722 and ask for more information. All applications and enquiries will be treated in confidence.

FREE AND CONFIDENTIAL

## HIV TESTING



The Health Shop  
Broad Street,  
Nottingham  
0115 947 5414

ALSO FREE CONDOMS,  
LUBE AND  
HEP B VACCINATION

**anvil press**

print & design

- ★ Leaflets/Flyers
- ★ Brochures
- ★ Newsletters
- ★ Business Stationery
- ★ Posters
- ★ Booklets
- ★ Stickers
- ★ Carbonless
- ★ Envelopes
- ★ Full Colour

119 Abbey Street, Derby  
Tel: 01332 298213

Anvil Press is a Workers Co-operative

## Welcome abroad

the complete gay travel centre

All destination available  
Gay Holidays  
City Breaks  
Worldwide Flights  
Accommodation  
Car Hire/Fly Drive  
Channel Crossing  
Theatres/concerts  
Lowest Price Guarantee!

0116 233 6655

Mon Fri 8.00 - 8.00 • Sat Sun 9.00 - 6.00

121 Kirby Road, Leicester LE3 6BE  
IATA . TGTG . T0256

## ▽ Briefly ...

▽ **Wall to Wall** Ian Leese 0171 485 7424 wants to interview men who were blackmailed or prosecuted for being gay before the 1967 Act.

▽ **Sheffield Lesbian Link Group** next meets Tuesday 7th May, 8pm, Sheffield Women's Cultural Club.

▽ **A local writer** would like to contact anyone who has applied for a job with the National Lottery Charities' Board and is unhappy about their recruitment and selection procedures. Phone Kathy on 0115 960 7684.

▽ **Lincoln Leather Group** (leather, denim or uniform). Meeting every Wednesday from 8pm onwards at Falstaff Inn, top of High St. Lincoln. Info. Lincs. Lesbian & Gay Switchboard (01522) 533553, Thursdays and Sundays, 7-10pm.

▽ **Nottingham's Lesbian Centre** is running a number of courses during the summer including Massage on 11th May and Lesbian Assertiveness on 15th June, both courses run from 10am-4pm. Cost of courses is £5.00/£3.00/£1.50 with a deposit when booking. A limited number of creche places are also available if booked in advance. Book in person, (see Suki Shergill) or phone her 0115 974 0230

▽ **The Lesbian Drop-In**, every Wednesday, 11am-3pm, provides a safe, supportive and relaxing space for a chat, a game of pool, darts, refreshments. Young children welcome. Creche available for under 5's, 11-12.30, 1.30-3pm. Why not come for lunch?

▽ **Lesbian and Bisexual women's** lunchtime 'Chill', 12-3pm Sunday 5th May at 45 King St. Leicester. Come and chill on the patio, eat lots of vegetarian/vegan food, read the Sunday papers, chat to your favourite women.



## LASS LINKUP TO RECYCLING PROJECT

Leicestershire AIDS Support Services have linked up with the City's Environmental charity 'Environ' to expand their fundraising through a recycling scheme. Aluminium drinks cans, greetings cards and textiles can all help to raise money when they are donated to the LASS Green Account.

Liz Blyth, Service Development Officer at LASS said: "With an ever-increasing number of people affected by HIV we need to continue to be able to meet their needs, but all these services cost money. The LASS Green Account is a way in which people can regularly show their support and concern without making a cash donation. And of course it makes environmental sense to recycle ordinary household materials which would otherwise be thrown away".

To donate to the LASS Green Account simply sort materials into separate bags, label them 'Leicestershire AIDS Support Services Account 436' and take them to Environ's recycling centre on Western Park any afternoon during the week or on Saturday mornings. They can also be left in the 24-hour Green Account bank in the car park at Western Park. For more information about LASS, HIV and AIDS or the LASS Green Account, contact LASS on (0116) 255 9995.

## BISEXUALITY THEME DAY

Nottingham Bisexual Women's Group's Bisexuality Theme Day attracted a lot of interest on 30th March with lots of positive feedback, writes our correspondent. The Day was open to all women with a positive interest in bisexuality. Workshops took place on Coming Out, Basics of Bisexuality, Parenting, Lesbians and Bi-women working together. In between there was plenty of chat, feedback and scrummy food.

Tracey, a social work student on placement at the centre, did much of the organisation and was thanked for her hard work and 'unfailing enthusiasm'.

Several in the group are especially interested in working as allies with lesbians. So if any lesbians want to be part of that, or if any woman wishes to contact the Group for any other reason please write to the Nottingham Women's Bisexual Group, c/o The Women's Centre, 30 Chaucer St. Nottingham, NG1 5LP.

## Centre Overturns Ban

(continued from front page)

It is the understanding of the Management Committee that Transvestites do not define as women."

"Full copies of the minutes of the meeting will be made available and are currently being sent to all volunteer groups and user groups in the Centre. We would like to thank all those who contributed to the policy review"

**Outright!** spoke to Stephanie Fisher who first contacted us when the storm broke. She said she was very pleased that the ban had been reversed. "I am expecting to have a meeting with the chairperson of the Management Committee shortly. I want to make sure something like this never happen again to anyone else. However, I want to make it clear that Transsexuality and Transvestism are totally different issues and should not be linked together as they have been in this case".

The ramifications for Stephanie go beyond the Centre. "The last few months have been a difficult time for me. The ban has had the effect of outing me. I cannot go back to being anonymous anymore; however, now this has happened, I aim to remain in Leicester and continue campaigning around issues of access for people with mobility difficulties who cannot use the Centre".

## CAMPIONS SOLICITORS

ACCIDENT?

FREE LEGAL ADVICE

NO WIN - NO FEE

45 - 47 MANSFIELD RD

NOTTINGHAM NG1 3FH

TEL: (0115) 947 6373

FREE CAR PARKING

NEAR VICTORIA CENTRE

## DERBY AIDSLINE

Worried/confused about HIV/AIDS?

For confidential advice and information, phone FREE on Derby Aidsline

0800 - 622738

Mon & Thur 7 - 9pm

Thurs 2 - 4pm

**Holistic Massage**  
by ITEC qualified Masseur  
Secure, Comfortable,  
Relaxing,  
For more details:  
**Ring Tim**  
(0115) 948 0975

**COUNSELLING & PSYCHOTHERAPY**  
**EVE PARSONS**  
Psychotherapist in advanced Gestalt training  
The Healing Arts Centre,  
Hockley, Nottingham  
Tel: (0115) 958 0734

## ▽ Briefly ...

▽ **First Out Youth Group** meets every Thursday night, 7.30pm-9.30pm at 45 King St. Events in May include workshops, laser quest, talent contest, ice skating. Contact Emma or Steve on 0116 254 7412 for details (phone/minicom).

▽ **ISHK** - Asian Lesbian, Gay and bisexual youth group meets fortnightly on Saturdays at Open Door, Granby St. Leicester at 2pm. Meetings in May are on Saturday 4th May and 18th May. For more info. contact Dylan on 0116 254 7412. (phone/minicom).

▽ **Country and Western Dance** for lesbians and gays, Saturday 15th June, Fosse Neighbourhood Centre, Mantle Rd, Leicester, 7.30pm-11.30pm. Tickets in advance: £4 waged £3 unwaged. On the door £5 waged, £4 unwaged. Dance tuition by Joy Anagnostis - Line and partner dance. Send payment and SAE to Dance Events, 45 King St. Leicester, LE1 6RN. Tel: 0116 254 7412.

▽ **Nott'm City Council LGB** workers meet on 14 May. Details from Rachel on 0115 940 5218 or Simon on 0115 948 3500 x6402.

## WALK FOR LIFE

What began ten years ago as a London walk-fundraiser for people living with HIV and AIDS, now happens simultaneously in twenty cities across Britain and in several European countries as well. 'The Walk for Life' on Sunday 9th June is supported by CRUSAID and takes place regionally in Derby and Leicester this year. Beneficiaries of the walks are Derbyshire Body Positive and Leicestershire AIDS Support Services respectively.

The Derby walk takes place in Allestree Park in the city and is a 7 mile stroll taking in parkland, woodland, river valley and pasture land. The Leicester walk begins in Abbey Park and follows the canal to Birstall and back. Why not organise a workplace, club, pub or sports club team or just enrol informally on your own or with some friends.

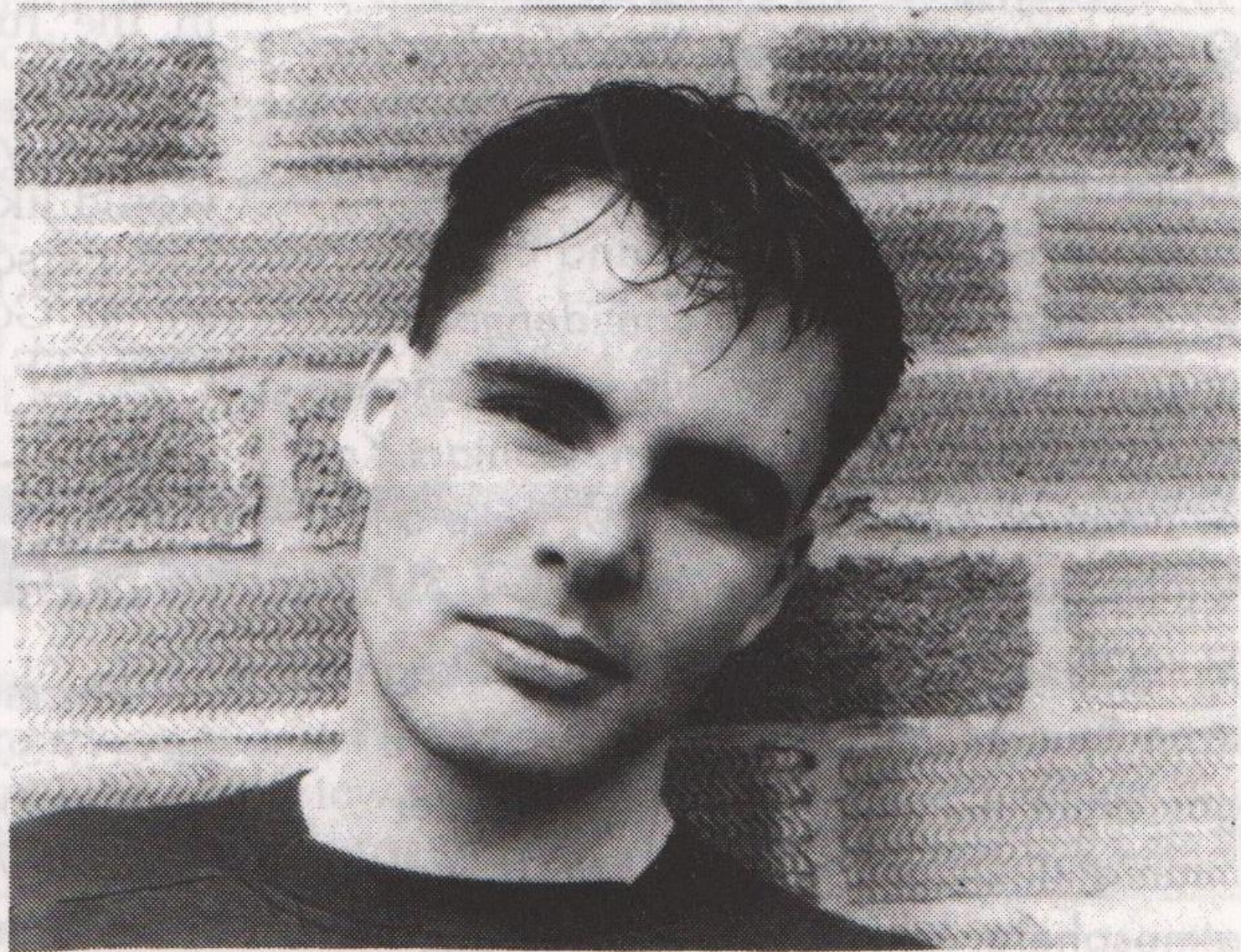
So if you fancy taking part telephone the CRUSAID freephone number on 0500 011 696 for details of these and other walks and how to register.

## PRETTIEST OF THE FRUIT

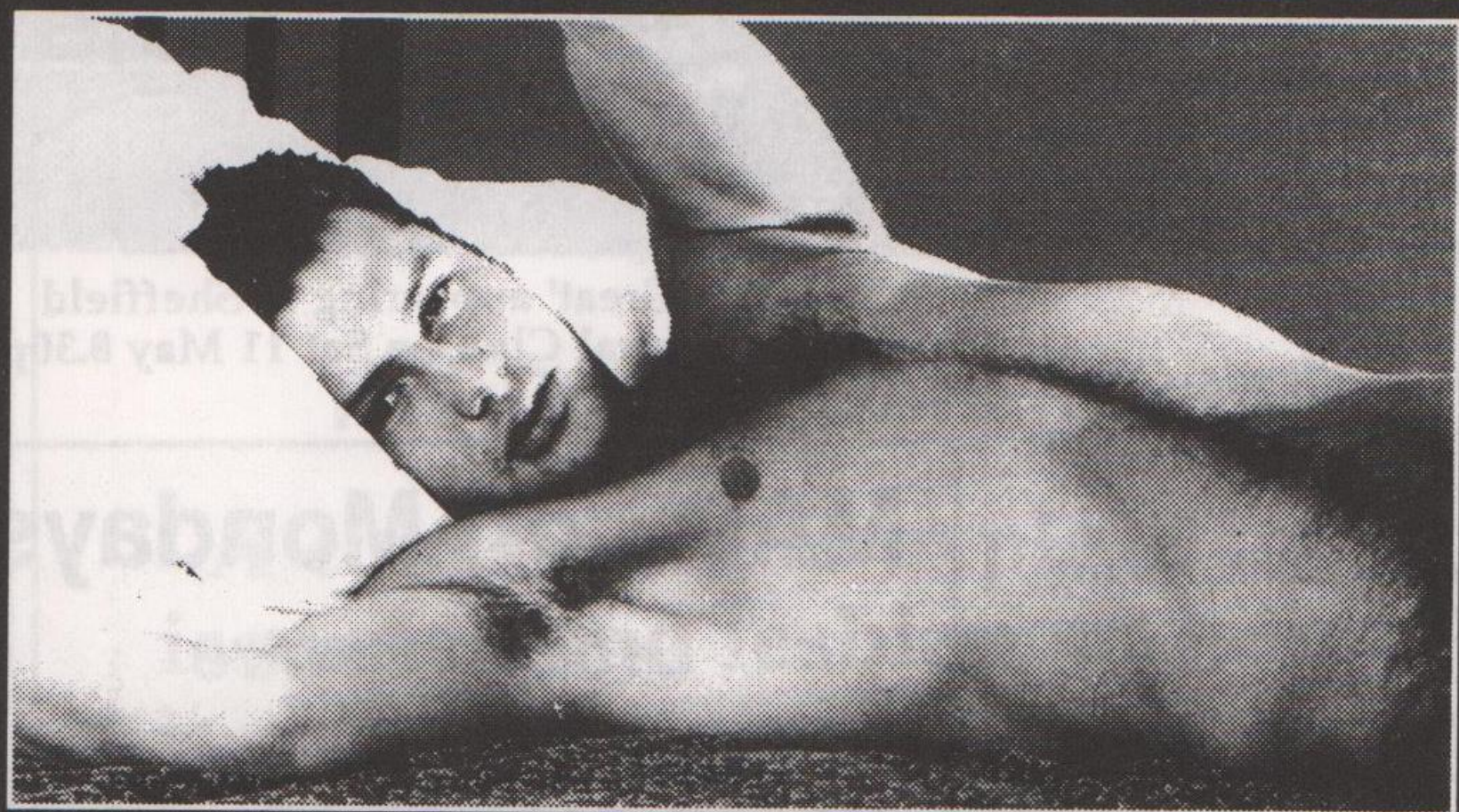
Julian Winmill, sexual health outreach worker in Lincoln, was a contestant on BBC tv's **Paul Daniel's 'Wipeout'** quiz programme recently. Each correct answer receives a cash prize which increases with each correct answer, but a wrong answer wipes out all the cash gained so far. Unfortunately this happened to Julian and he was left with nothing but a pepino - an exotic fruit.

"All in all it was a great day. I would recommend doing a quizshow to anyone, it

is great fun. Now where's my trolley, I'm practising for Supermarket Sweep," says Julian, pictured here.



When only the best will do...



**INTERNATIONAL CHAT  
SPEAK TO GAY GUYS  
AROUND THE WORLD  
00592-574 651**

**STORIES THAT WILL  
BLOW YOUR MIND  
00592-240 828**



**PROUDLY GAY OWNED & RUN**

CALLS COST 84P PER MIN OFF PEAK/ £1.04 PEAK  
CALLS TERMINATE IN GUYANA PW PO BOX 7367 MELB 3004 AUS

# Portland

*Insurance Services Ltd*

5 Coachmans Court, The Cattle Market,  
Ipswich, Suffolk IP4 1DX

**Pubs & Clubs**

**Household • Motor**

**Hotels & Restaurants**

**Commercial & Liability**

**Personal Accident**

**& Sickness**

**Life & Pension**

**Mortgage Protection**

**Investments**

*For further information*

*please call Phil Carvosso*

**Telephone 01473-289115**

**Facsimile: 01473-233661**

**Portland - Broker for Pride '95**

An appointed representative of Eurosire Investment Services Ltd,  
who are regulated by the Personal Investment Authority

**FREE  
MOBILE PHONE  
WITH  
EVERY QUOTATION**



## ▽ Briefly ...

▽ **Classic Film Season** 'Black Narcissus', (1946). A special 50th anniversary presentation of this classic tale of seething passions. Set in a convent in the Himalayas and starring Deborah Kerr, David Darrar and Sabu. Saturday, 25th May, 7.30pm, doors open 7pm. (pre-film entertainment on the Wurlitzer Organ). Tickets £3.50 & £3.00 (conc). Come in 1940's dress. Tickets from Victoria Centre Box Office, Rushcliffe Recreation Dept or Loughborough Town Hall Box office.

▽ **Nottingham Young Lesbian** Group now meets every Wednesday evening, 6.30-8.30pm, at Base 51. It is a support group for young lesbian and bisexual women aged 25 and under, which offers a safe and confidential environment for advice, fun and a chance to meet other young women. Contact Kate or Janet on 0115 952 5040, Base 51 Glasshouse, St. Nottingham, NG1 3LP.

▽ **'Obsession'** every Friday in Skegness from 8pm to 2am. Lincolnshire's No. 1 gay night! £2 entrance (no entry after midnight). Disco and quiet bar, friendly atmosphere, fully licensed restaurant, friendly gay doorstaff, ample, well lit car parking, fully self-contained complete with camping and caravanning site. At the Kings Head, Gunby Corner, Nr. Skegness, (7 miles from Skegness, 3 miles from Spilsby on the A158).

▽ **Gay May Ball**, Derby University LGB Society, 16 May, Curzon's Nightclub, Derby £2.00/£2.50 door. Adrian 01332 367317

## LOOKING FOR NEW FRIENDS?

Then Leicester Gay Group, a social and befriending group for gay men of all ages, wants to hear from you.

Wide variety of social activities and meetings for newcomers held fortnightly in the centre of Leicester.

**Interested?**

**Phone Chris on  
01509 415 272**

## The Rainbow Practice

This is a network of lesbian, gay and bisexual counsellors and psychotherapists practising across the East Midlands. We've met once so far and we're in the process of organising publicity material and some kind of compilation of details about ourselves as therapists which can be requested by individuals or organisations through an administrative address.

"We've also got various ideas about what else we can do as a network, including support, arranging occasional Speaker-meetings, cross-referrals and training. At the moment we're a self-financing group with no official base but in the future, who knows??" says Eve Parsons.

If any LGB counsellors or therapists would like to get involved, please contact Eve Parsons c/o The Healing Arts Centre, 42 Goosegate, Hockley, Nottingham, NG1 1FF or telephone (0115) 958 0734.

## SPRING WALKS


**Thursday 9 May:** *Transpennine GOC*, meet 7.30pm, Baslow, for 5 mile walk with pub afterwards. Details from John 0113 273 7040.

**Sunday 12 May:** *Leicester Hiking Dykes*, meet 10.30am at 45 King St for country walk. Suitable lesbians and active children. Details Marie 0116 270 1621.

**Sunday 19 May:** *Pink Pathfinders*, meet 10.45am at Alport Bridge for 8 mile walk, Alport, Conksbury, Lathkildale, Youlgreave and Bradford. All welcome, gay, bi, lesbian.

**Sunday 19 May:** *East Midlands GOC*, meet 11am near Naseby. Details Alan 0115 923 5421.

**Sunday 19 May:** *Nottingham Hiking Dykes*, meet 10.45am, Kingston on Soar (GR 503277) for 6-8 mile walk.



**WOMENS  
Coffee  
bar**

every Wednesday 12pm-2pm  
45 King Street  
dental dams, lubricant and  
safer sex information available.  
0116 2547412

## Awards for two regional theatres

Two regional theatres pick up awards for improving facilities for people with a sensory and visual impairments. Both Derby Playhouse and Nottingham Playhouse have recently installed enhanced hearing systems, which will benefit deaf and blind people by allowing them to hear what the actors are saying more clearly as well as providing a live commentary of the action taking place on stage. Visually impaired patrons can benefit from a 'talking brochure' and listen to a description of the play, cast, costumes and set before the performance begins, with live commentary throughout, when required.

£8,000 was jointly raised by Guide Dogs for the Blind and the Derby Playhouse audience through raffles and the award to Nottingham Playhouse is the culmination of fifteen years' improvements for deaf and blind people. Contact both theatre box offices for more details.



'Kate the Great' appearing at Sheffield Women's Cultural Club on Sat 11 May 8.30pm

## MAPS on Mondays

**Drop in Centre**

**Westfield Folkhouse  
Westfield Lane, Mansfield**

HIV positive or caring for  
someone who is?

Maybe you need some questions  
answered or perhaps you  
just need to talk.

Call in any monday  
between 8.00 - 10.00pm.



**MAPS HIV & AIDS Support Group**

Caring for people

In the Mansfield & Ashfield area

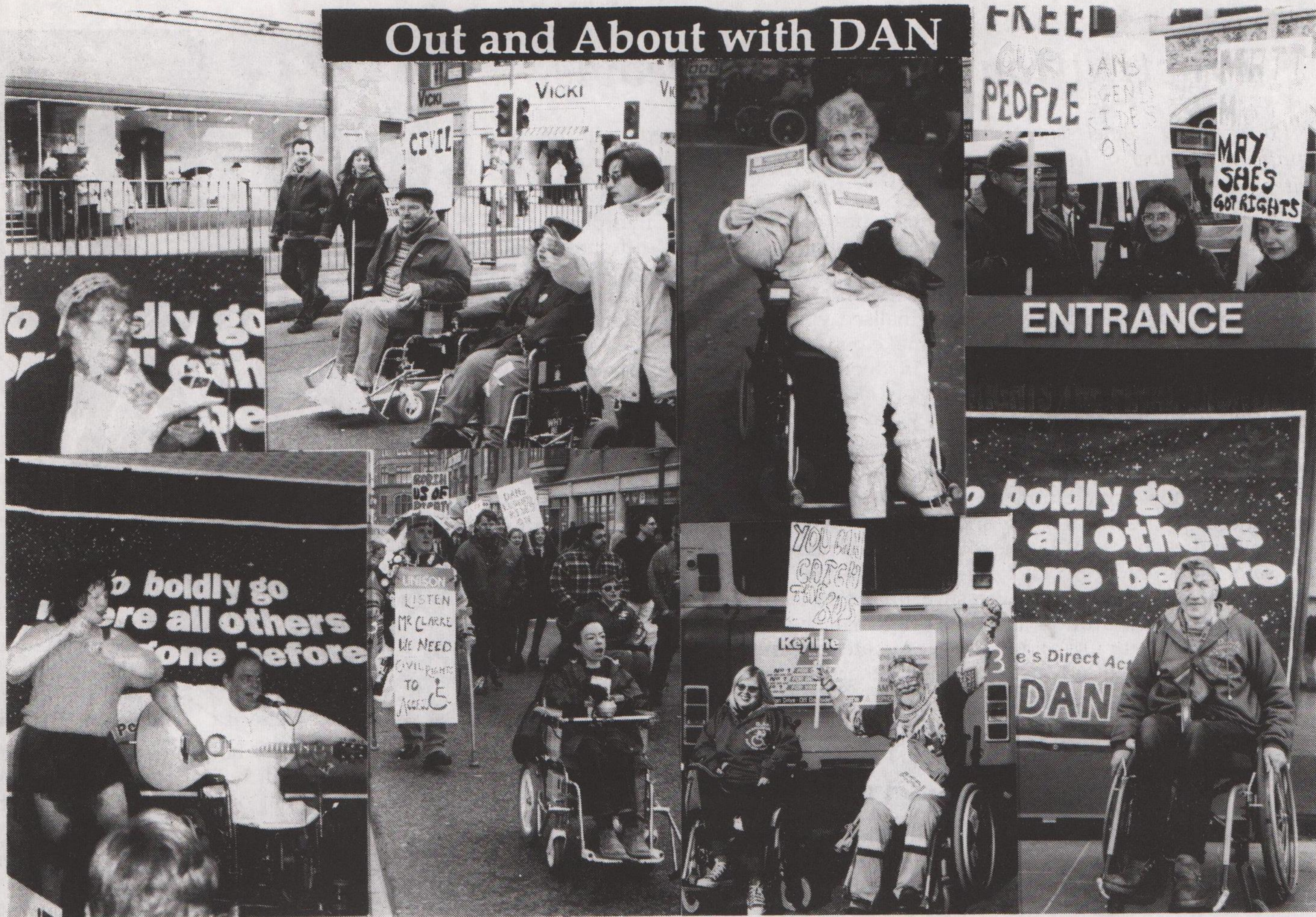
Mansfield and Ashfield Positive Support

PO Box 3, Mansfield

Nottinghamshire, NG18 1QT.

**Tel: 01623 651351**

## Out and About with DAN



## THE ADMIRAL DUNCAN

### Lower Parliament Street Nottingham

**(0115) 950 2727**

*Membership now available*

Club open until 2am Wednesdays,  
Thursdays, Fridays and Saturday. Also open  
Mondays, except 1st Monday of month.

### Membership Form

Surname.....

First name.....

Address.....

.....Postcode.....

Date of birth.....

I agree to abide by the rules of the Club.  
I am over 18

Signature.....

## NOTT Dance '96

*the seventh Nottinghamshire dance festival*

**2 May - 18 May**

Performances, workshops and  
talks from an outstanding  
array of regional, national and  
international artists.

**Artists include:**

Javier de Frutos  
Maski Iwana  
Jonathan Lunn &  
Janice Garrett  
Wayne McGregor  
Russell Maliphant  
Goat Island

Programme includes three  
commissioned premieres by  
regional companies.

For brochure please telephone  
(0115) 941 0773



DANCE 4

Registered Charity no. 1015437

# Prostitution And Young People

Poverty and homelessness are on the increase and this inevitably affects a significant number of lesbians, gays and bisexual people, Maz Soar from WHIP writes:

Despite the tabloids views that prostitutes are sex-hungry nymphomaniacs who ply their trade for thrills and pleasure the truth is very different. Young women (and men) are increasingly selling their bodies to survive financially. The government policy of withdrawing benefits for 16-18 year olds has meant that many of our most vulnerable and marginalised youngsters have no entitlement to housing benefit and find it difficult to make ends meet. Increasingly, too students are turning to sex work to supplement inadequate grants and we are seeing more and more young people on the streets of Midlands cities, working in dangerous and often hostile circumstances. They are often subjected to violence from punters, harassment from police and increasingly, from vigilante groups.

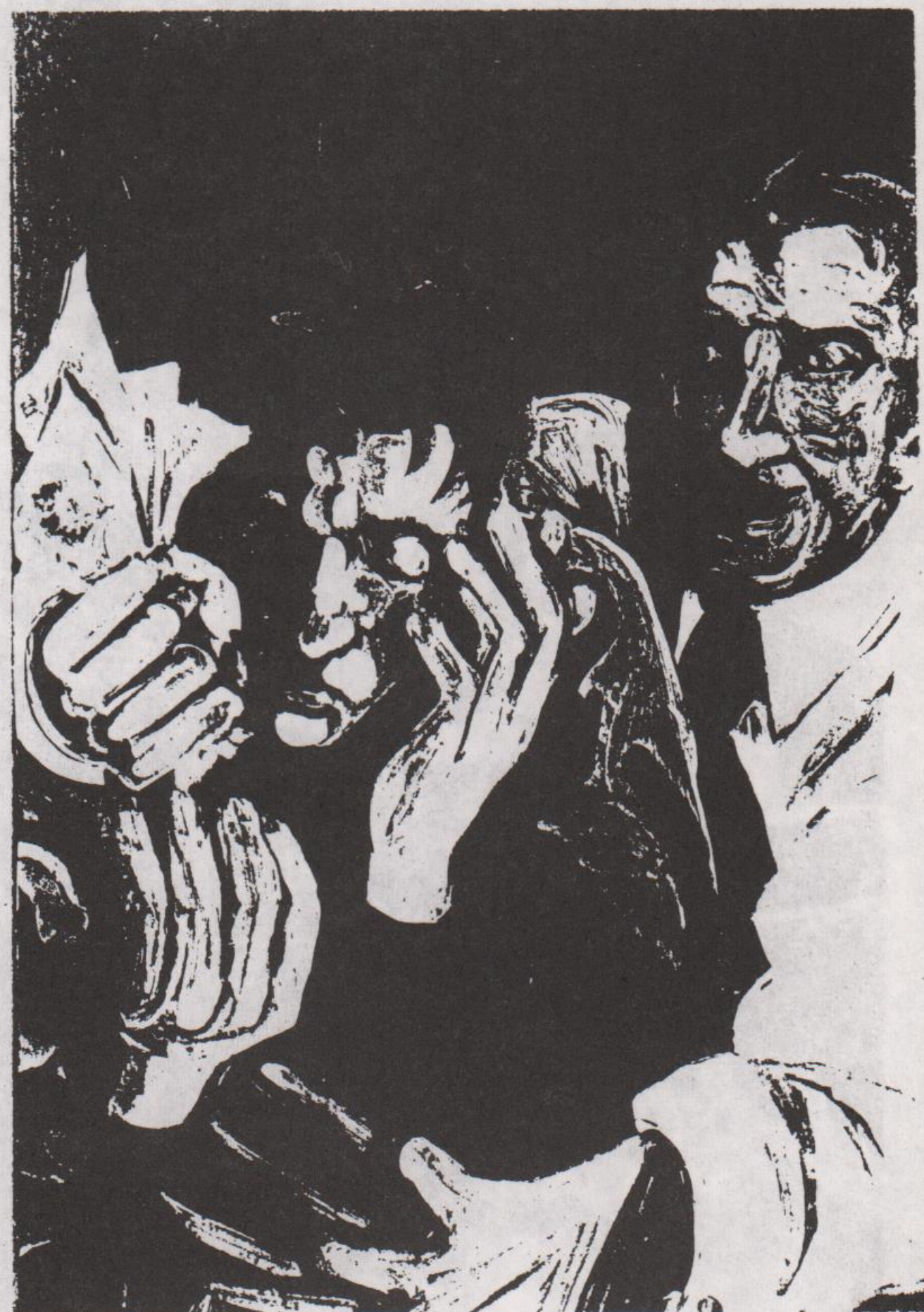
Many of these young people are runaways or have recently left care homes, and are ripe for exploitation by pimps and punters alike. Unlike older more experienced, professional sex workers many have little or no knowledge around safer sex and even less of the negotiating skills necessary to insist on condom use and safer sex practices. Lack of sex education in schools appears to have contributed to this situation. Pressure for unprotected vaginal and anal sex is continual and often attracts a higher price than the usual 'going rate'. Some get caught up with drug use and abuse, desperate to turn their next trick in order to buy their next fix. Little help is available other than from projects such as WHIP

in Leicester, POW in Not-

tingham and SAFE in Birmingham who offer support, advice, free condoms and equipment and hold drop-ins. All these projects have limited resources that only touch the tip of the iceberg.

There needs to be an urgent and radical shift in government policy towards solving poverty and homelessness issues, if many of Britain's youth are to avoid drifting from homelessness into prostitution and its associated dangers.

Illustration: Lousie Catterall



## THE MENS SEXUAL HEALTH PROJECT

45 King Street Leicester LE1 6RN  
(0116) 254 1747

We offer information, counselling and support around HIV/Sexual Health, safer sex, relationships and sexuality.

We provide free condoms, lubricant and dams on request.

We are a team of 3 Gay men:-

Andy Griffiths - Project Co-ordinator

Dylan Parris - Project Worker  
(Black men who have sex with men)

David Peet - Project Worker (Cottaging & cruising issues)

### OPENING TIMES

Monday 12 noon - 4pm

Tuesday 12 noon - 4pm

**Wednesday The Centre is Women Only**

Thursday 12 noon - 4pm

Friday 12 noon - 4pm

2nd Saturday of every month 12 noon - 3pm

ALL OUR SERVICES ARE FREE AND CONFIDENTIAL

Available free to all men who have sex with men regardless of age, sexuality, race, religion, disability or antibody status.

## TRADE

is a group of gay and bisexual volunteers who want to do something about the HIV epidemic.

If you are interested in getting involved, why not give us a ring.



TRADE

We are particularly keen to recruit volunteers from Black communities who are currently under-represented in our organisation.

A warm welcome awaits you from  
Andrew and staff at

## THE KINGS HEAD

*Open all day, every day*

Emery Lane, Boston

01205 362 926

## KNOW WHERE YOU STAND?

*Talk things through any legal problem!*

We are a young firm of solicitors who are committed to providing a legal service to the gay and lesbian community.

Pop in at our offices for free initial advice, or visit our information advice clinic on Thursday evening till 7pm.

Legal aid is available.

The Falvert Oliver Partnership, Solicitors,  
26 Lower Parliament Street,  
Nottingham, NG1 3AD.

Tel: (0015) 950 66 77 - or call on our free call number (0115) 941 95 77.

*We are opposite the Ritzy night club.*

**ANY LEGAL PROBLEM.**



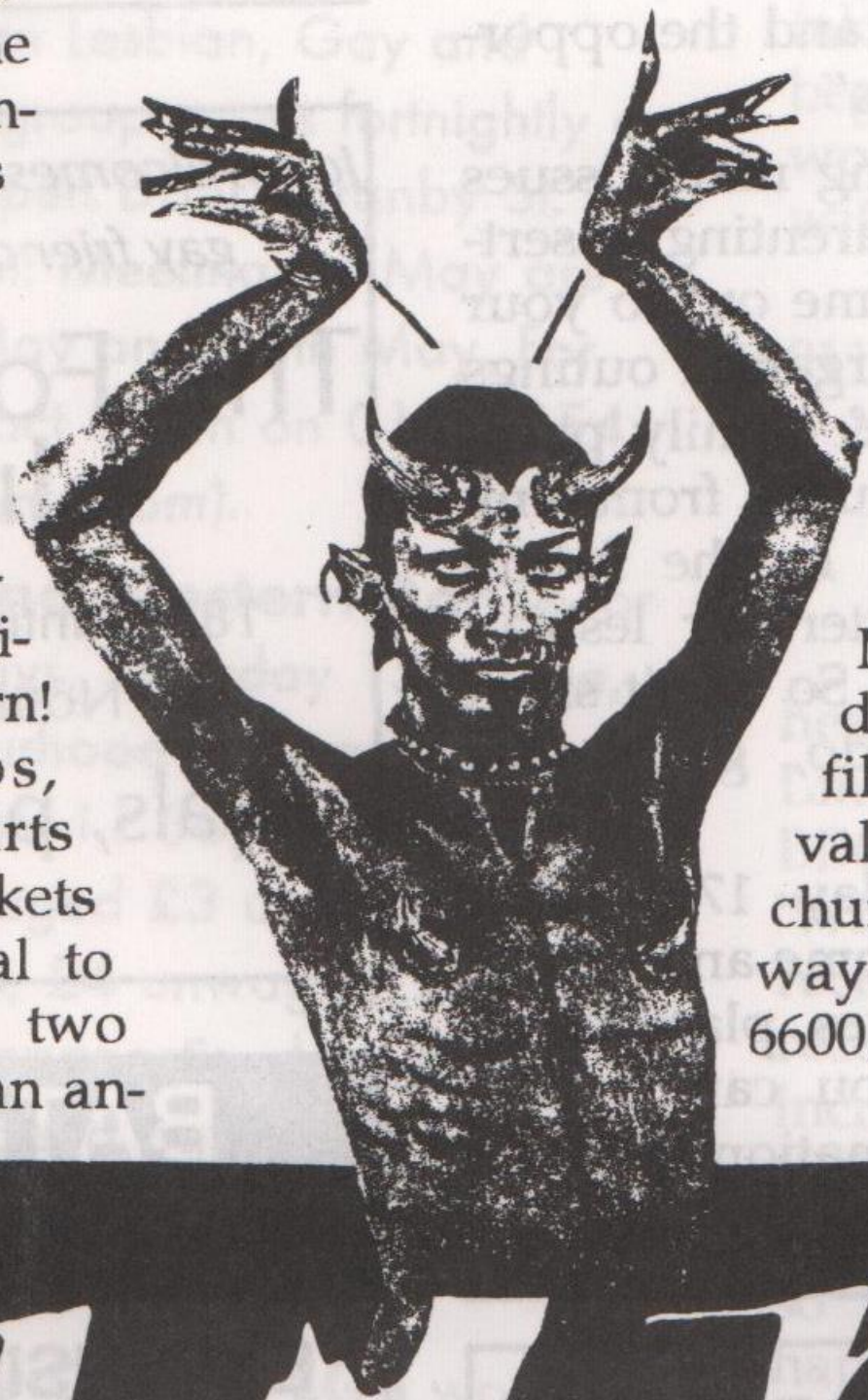
## London Lesbian and Gay Film Festival on Tour - Competition

The London Lesbian and Gay Film Festival hits Broadway, Nottingham this month, from Friday 17th to Thursday 23rd May. The best movies from filmmakers around the world are included in this week long celebration of queer cinema.

Broadway, the British Film Institute and Burn! have videos, books, T-shirts and free tickets for the festival to give away to two people who can answer the following, very simple question:

For how many years has the London Lesbian and Gay Film Festival been on tour?

Answers to Sam Devaney, Broadway Media-Centre, 14 Broad Street, Nottingham, NG1 3AL by Friday 10th May. For more details about all films in the festival and a free brochure ring Broadway on (0115) 952 6600/6611.



### CONFERENCE ON YOUNG LESBIAN GAY AND BISEXUAL ISSUES

Thursday 20 June 1996  
at  
The Dome, Doncaster

A conference to explore the issues facing lesbian, gay and bisexual young people and those professionals providing services for them.

There will be guest speakers and workshops.

**'One in Ten' - Lesbian Gay and Bisexual Youth Group,  
Doncaster  
Mondays 5.00 pm - 7.00 pm.**

For further details of both of the above contact:

**Mike Brown  
(01302) 320 111 extension 3511**

## ALL ROADS LEAD TO PRIDE!

The following organisations have contacted Outright! with details of their Pride '96 travel arrangements for Saturday 6th July.

Derby Body Positive's Pride Coach leaves Green Lane Gallery 8.30am. Tickets cost £10/£8, on sale from 9th June. Contact 01332 292129.

Leicester's LGB Centre have over 100 tickets to sell at £10/£8 (unwaged). To reserve a seat contact Julie Taylor or Fee Scott on (0116) 254 7412 (office hours).

The OutHouse Project's 'Earlybird tickets' are now on sale for £10/£8 (conc), limited numbers available so book early. After this they cost £1 more. From Mushroom Bookshop, Heathcote St. Hockley, Nottingham.

Cello's women's disco is also organising a coach from Nottingham for gay women and their gay male friends/guests at £11.50 each. If six or more book together there is a discount of £1.50 per person, making it £10 per head. To book contact Cello's Entertainment Company, PO Box 48, Nottingham NG4 3JW. Hotline (0115) 961 7389. A £5 deposit is required and cheque should be made payable to 'L. Howard'.

Lincs Lesbian & Gay Switchboard have organised coaches to Pride 96 from Lincoln, Gainsborough, Skegness, Boston, Sleaford & Grantham, leaving Lincs 6.00am onwards. Tickets £12/£10 unwaged/student. Booking forms from LL&GS, PO Box 99, Lincoln, LN4 2SD (enclose an SAE).

### FANCY BEING A FLIGHT ATTENDANT?

Well, actually, no you don't have to demonstrate the emergency exits but Nottingham's OutHouse Project would love you to help steward one of their buses to Pride this year. If you'd like more info, call Andrew on (0115) 924 4908.

## METRO CINEMA

Green Lane, Derby: box office (01332) 340 170

### THE MOST DESIRED MAN

Dir: Sonke Wortman/Germany/1995/95 mins.

Dumb hunk Axel is thrown out by his girlfriend and moves in with a gay friend. Now he discovers a whole new world where there are no women to tempt him, but an awful lot of admirers. And just to complicate things further, his ex announces she's pregnant. A nifty comedy of sexual confusion, which proved a record breaker at the German box office.

Tue 7 - Thur 9 May, 8.45pm

### FRENCH TWIST

Dir: Josiane Balasko/France/1995/105 mins.

A huge hit in France for writer/director/star Balasko; she plays the butch Marijo, a truck driver who falls in love with bored housewife Loli, much to the disapproval of Loli's philandering husband. They settle into an uneasy menage-a-trois, leading to a series of situations which combine the traditions of French farce with some neat observations on sexual politics.

Fri 10 - Wed 15 May, Fri. & Sat. at 8.30pm, Sun. at 5.30pm, Tue & Wed. at 6.15pm.

### UNZIPPED

Dir: Douglas Kieve/USA/1994/80 mins.

Part performance, part documentary, this is a wonderful celebration of artistic inspiration and eccentricity. We follow world-famous designer Isaac Mizrahi while he creates his 1994 autumn fashion show, in a whirlwind of excitement, anxiety, exhilaration and terror. The world of high fashion has rarely been depicted in such intimate detail.

Tue 21 - Thu 23 May at 8.45pm.

### JEFFREY

Dir: Christopher Ashley/USA/1994/92 mins.

Jeffrey is a young gay actor whose worries about AIDS lead him to decide on a celibate lifestyle. That's until HIV-positive Steve comes along, throwing Jeffrey's hormones into a dither and his moral sense out of the window. With excellent support performances by Patrick Stewart and Signourney Weaver, this is a wonderful blend of contemporary themes and old-fashioned feel-good romantic comedy.

Fri 31st May - Sun 2 June, Fri. & Sat. 8.30pm, Sun. 8pm

## Cello's at the Meadow Club

Following three successful years at the Old Vic in Nottingham, Cello's, the monthly lesbian one-nighter is moving to new premises, following the sale of the venue to a new owner. Existing club-goers were given advance warning of the impending move at last month's 'disco'. Their new venue is The Meadow Club on Meadow Lane, Nottingham and the first event there takes place on Thursday 30th May. Its features include full air-conditioning, a food bar and pool tables. Following the disco on the 30th May Cello's hopes to settle down to regular Friday nights for the moment. Said promoter Linda Howard: "We plan to take over the Saturday night slot in the New Year when the present advance bookings for the Club run out."

That's not all... they are organising a coach to Pride on July 6th for £11.50 per person. To reserve your place send £5 deposit with each booking. Balance to be paid prior to the day. Groups of six or more, £10 per head. Please make cheques payable to 'L. Howard'. (Gay male friends/guests of gay women are invited on the coach as well).

### ADMIRAL DUNCAN'S CAMPERY

There are plans to make Wednesday nights more camp and theatrical at the Admiral Duncan in Nottingham with cabaret every week, starting on the 8th May with Mopp & Bucket.

## LEICESTER LESBIAN MUMS' GROUP

A Leicester Lesbian Mums group has been set up by three gay women with children. A spokesperson for the group said: "We understand that other gay mums need a group that will offer support and the opportunity to discuss any problems".

The group will be covering many issues ranging from homophobia, parenting, assertiveness, when and how to come out to your children etc. Their aim is to organise outings to the seaside, leisure parks & family pubs. The group welcomes gay mums from any background, culture or age. In the future they will provide a newsletter for lesbian mums and a pen pal service. So don't sit at home wondering what to do, go to the group!

They meet next on Friday 17th May, 5pm-8pm, children very welcome and drinks available. The meeting takes place at 45 King Street, Leicester and you can contact 0116 254 7412 for more information (phone/minicom).

## Fabulous Homes & Gardens



Freshen up your home or garden ready for the summer!



### FREE ESTIMATES COMPETITIVE PRICES

Box FHG 1, Outright!, PO Box 4, West PDO, Nottingham, NG7 2DJ

*Joy welcomes all gay, lesbian & gay friendly people at*

## The Forresters Inn

183 Huntingdon Street  
Nottingham

Meals, pool, darts.

## BATHLEY GUEST HOUSE

### EXCLUSIVELY GAY

Tea/coffee making facilities in all rooms. No restrictions. Own key, plus FREE admission into Admiral Duncan.

101 Bathley Street,  
Trent Bridge, Nottingham  
0115 986 2463

## THE DOVER CASTLE

34 DOVER STREET  
LEICESTER

SUNDAY MAY 12TH

THE FABULOUS  
MICHELLE

FEMALE VOCALIST

LEICESTER'S LONGEST  
ESTABLISHED GAY PUB

### CENTRAL DERBY

Room available for lesbian in fully furnished modern house, all mod cons. Non smoker pref, £120pcm+bills.

Call after 10 April  
01332 341126

### Coming soon to the East Midlands

A series of workshop weekends for gay/bi men offering Massage, Meditation and Circle Dancing, costed on a sliding scale. For more details ring Tim (0115) 948 0975

## MONT ST MICHEL

(4 miles)

BRITTANY

B & B, vegetarians welcome, also cottage for six. Available all year, idyllic & peaceful setting.

Tel: 0033 99 80 29 11

Brenda welcomes you to

## The Stag & Pheasant

Lower Parliament Street,  
Nottingham Tel: 0115 950 6414

Free pool Tuesday nights/  
Saturday lunches, Karaoke  
Fridays or Saturdays (ring for dates)

GAY FRIENDLY



## The Plough Hotel

Cow Brow, Lupton, Cumbria LA6 1PJ  
Tel: 015395-67227 Fax: 015395-67848

### Gateway to the Lakes

14 en-suite bedrooms  
Licensed Bar  
Bar lunches, suppers  
À la carte restaurant

2 minutes junction 36 on M6

# INTERVIEW

## "CAN I HELP YOU?"

'Getting a fairer deal' is something that Biddy McMeel (pictured) Training Officer at the Nottingham Citizens Advice Bureau, and out lesbian, is keen to promote. As cuts bite in social services spending, and legal aid is hard to obtain, the work of the CAB is destined to become even more significant.

The national organisation of CAB's has had a specific equal opportunities (in addition to its blanket statement of intent) recognising the particular needs of black people, disabled people, women, lesbians and gay men, people living with HIV/AIDS and Irish people for some time but Biddy is the first to recognise that a policy is only as good as its practical application.

"We have to decide what we are going to do with these policies. For the most part we are still a middle class, white, heterosexual organisation which is not representative of the range of people we work with. We want to be communicating with people about their problems and anxieties from a position of understanding and experience; we don't have any black, disabled, lesbian/gay, or bisexual volunteers to work with our black, disabled, lesbian/gay or bisexual clients. In order to give a better service we need to address these issues", she said.

"We also want to break down the isolation that some of our



volunteers might feel as members of disadvantaged groups themselves and that is one reason why we are keen to encourage lesbians, gay men and bisexual people to apply".

The CAB offers excellent training and opportunities to attend courses which the organisation funds. There is a thriving lesbian and gay group within the national organisation. However, although Biddy admits that bisexual people are not recognised by a specific policy, she feels this issue can be more effectively campaigned around by more bisexual people joining the association.

The CAB can offer a range of services which includes welfare rights advice, debt counselling, and general legal advice. "If we can't offer a service we know where we can refer people", she adds. "Our welfare rights team are currently under-used by people living with HIV/AIDS and can help with disability benefits claims and appeals."

So if you have some free time and would like to work with a wide range of people and learn some new skills, why not contact Biddy at Nottingham Citizens Advice Bureau, Castlegate House, 24-30 Castlegate, Nottingham, NG1 7AT.



**New Venue**

**'The Meadow Club'**  
Meadow Lane Stadium  
Meadow Lane, Nottingham

Late licence

Food Bar

Pool Tables

Airconditioned premises

8pm - 1am

£2.50 before 10pm

£3.50 after 10pm

**Dates**

**Thurs 30 May**  
**Fri 28 June**

Cello's Hotline:  
0115 961 7389



The Cello's Entertainment Company, PO Box 48 Nottingham, NG4 3JW

## LILY SAVAGE

IN



MAGGIE KIRKPATRICK  
as 'THE FREAK'

BELLA EMBERG  
as Minnie

"Connoisseurs of kitsch would be mad to miss it" Daily Telegraph

**MON 20 - SAT 25 MAY**

NOTTINGHAM  
— ROYAL —  
CONCERT HALL

**BOX OFFICE 0115 948 26 26**

Tickets £10 - £14

# classifieds

**HOW TO REPLY.** Seal each reply in a separate envelope. Write the number of the Box you are replying to in the top right hand corner of each envelope. Place them in a larger envelope. Enclose two loose first class stamps for each reply: replies without stamps are not forwarded. Address the outer envelope to Outright, stamp and post to: PO Box 4, West PDO, Nottingham NG7 2DJ.

## men's personal

WHERE are you?!?! Bi naturist 22, GSOH looking far & wide for anyONE, anyWHERE, anyAGE (18+)...gen replies only, must have SOH! Photo non-essential - your letters are! Waiting...Box 303

TALL dark handsome guy 25, 6', v.w/e, fit, sexy, gen, honest seeks slim smooth 18-25 for fun/121. Photo/phone app. Box 304

HORNY w/e active guys sought by Nott'm guy, 44, decent looks, GSOH. Age/looks unimportant. N/sc, n/sm pref. Box 305

DERBY: Blonde Andy Bell lookalike seeks soulmate lover. You: 18-35, slim, safe, GSOH, s/ac. Me: 5'10", muscular, att, w/e, eco/dolphin friendly. ALA. Box 306

NOTTS: 24 seeks local gen guys for safe fun & frolics. Any age (18+). Photo nice but not ess. Box 307

### GUY 20

student, healthy 6', dark hair/eyes, goodlooking, GSOH seeks tall guy for f'ship & rel. Can accom. Any nationality. ALA.

Box 308

E.MIDS: Young 69 seeks 18+ active, sincere, discreet affectionate guy, any nationality for poss 121. Box 309

DERBY male, masculine 24, 6', dark hair, blue eyes, med build, gen & caring, VGSOH seeks gen hairy guy 25-35 for f'ship/121. ALAWP. Box 310

TWOSOME: 50/1,73/95 34/1,64/57 seek "ambidextrous" third for fun without strings. Any age/nationality. Leics area. Accom only. Box 311

BOYISH 30 y/o 5'5" green eyes, smooth body seriously seeks 35+ romantic homeloving type. I'm Leics based. Torquay guy as lover please. Box 312

NOTT'M guy s/ac smooth med build seeks camp guys 18-28 smooth/hairy for massage, CP, 121. Var int. Shirtless photo. ALAWPR+ph. Box 313

CLASSICAL music. Anyone for concerts, music making (amateur pianist), listening/ swapping CD's? Write/phone Stewart 01509 506344 (mainly ansaphone; leave name/ number for reply). ALA. Box 314

LEICS: Guy late 40's looking for friends, penfriends 18-35. Interests walking/swimming, socialising. Can travel. V.broadminded. Coloured all welcome. ALAWP. Box 315

HI! Are you looking for a tender, mild & fascinating Ghanain guy for serious f'ship/ rel? I am your choice. Drop me a line. Box 316 (enclose 80p stamps with your reply)

### NOTT'M area:

Hi there! I'm 43. Any young (18-35) guys out there who prefer older guys for f'ship, poss more? Photo ensures my prompt reply.

Box 317

NICE looking slim guy 30's seeks chunky rugby player types or hairy guys for fun & f'ship. Briefs, massage, hugs & cuddles. Photo app. Box 318

SOCIABLE guys 25-40 sought by early 40's prof man for evenings out, conversation & time together. Derby. ALA. Box 319

LEICS/NOTT'M: Guy 34 passive 5'8" slim, healthy, smooth body seeks prof man 50-65. Looks unimp. Don't delay, write today. ALA. Box 320

GHANAIN guy, smooth body, tactile, crop type seeks English man for stable rel.

No time wasters. Box 321 (enclose 80p stamps with your reply)

DOCTOR 40, Mids seeks 121 with sensible down to Earth person, probably 25-40. ALAWP. Box 322

E.MIDS: 42, firm body, great butt seeks younger (18+) active or versatile into sport, massage fun. ALA. Ph.no. please. Box 323

NOTT'M/E.Mids/anywhere: S/ac guy 26, 5'9", dark hair, blue eyes, told goodlooking seeks sim gen, honest, loyal partner for committed rel. ALAWP. Box 324

LEICS/anywhere: Guy 34, v.short cropped hair, 5'11" slim, fit seeks guy for fun & f'ship, poss 121. Who knows. PIP. Box 325

ANYWHERE! Prof 48, bearded, car owner seeks life long companion/partner/lover. It's springtime & time to love again. Will travel anywhere. ALA. Box 326

GHANAIN lad 22 wicked body, honest, smooth, cut wants longlasting intimate man for best romantic friendship. Write with phone. Box 327 (enclose 80p stamps with your reply)

NOTT'M male 26 seeks friends sim age poss leading to romance. Var int. So come on get writing for a date. Box 328

LEICS lad 24, 5'6" slim, goodlooking, gen seeks caring 18-28 for f'ship/fun/loving longterm rel. Hopefully night in/out together. Can accom. Photo app. Box 329

CHESTERFIELD: V. fit active w/e guy, early 50's, GSOH, seeks slim smooth boyish 18-22 for 121. Can accom at all times. ALAWPR. Box 330

TALL slim guy with goatee uninhibited seeks anyone 18-40 with Polaroid to take some pics. Will pay for film! Photo/phone app. Box 331

GHANAIN live boy soon visit UK. Wicked body flesh skin seeks male partner for intimate chart. Box 332 (enclose 80p stamps with your reply)

LEICS/NOTTS: Cute Asian guy, fair, smooth, c/shv, you active 25-35 romantic goodlooker seeking fun/f'ship leading to 121. Photo app. gen replies. Box 333

NOTT'M: Bearded, cropped, pierced fit active young 65, close city centre wltm another hirsute(?) unattached kindred spirit for regular TLC. Photo app. ALA. Box 334

ARE you looking for goodlooking Ghanain 20 y/o penfriend? I am your choice. Write with photo & you will feel better. No time wasters. Box 335 (enclose 80p stamps with your reply)

NOTTS/Lincs: 27 naturist seeks friends 20-35 for summer beach visits & general companionship. Box 336

NOTT'M guy seeks group loving with adventuresome guys. Me: 25, slim toned 6', smooth, horny. You: a letter with likes/dislikes. Box 337

SWEET honey Ghanain lad 22 seeks w/e Englishman for longterm 121 loving rel. Enjoys sports, music, travel. 30-40. Box 338 (enclose 80p stamps with your reply)

### MIDLANDS:

Guy wltm male over 50. Must be very muscular & very hairy & bold. Must be discreet.

Box 339

SMOKING turn you on? Pipes, cigars, cigarettes? Then contact Blue Haze, London, WC1N 3XX or Box 340

S.YORKS: Lonely 40 looking for love, f'ship & that special man any age. All sincere letters answered, so write soon. Box 341

NOTT'M male, 22 seeks 121 with camp/non-camp basically anybody with TLC & kind heart, 18-28. ALAWP+ph. Box 342

MANSFIELD: Gay man 42 looking for quite gay boyish young man under 30, 18+ for nights in/out. Box 343

THERE must be a knight in shining armour out there, 18-25. S/ac, s/lk & v. cute. Please write & rescue me, I'm 33 & lonely. Box 344

E.MIDS gay guy into videos seeks correspondence with sim into exchanging/ swapping videos. Box 345

NOTTS: Mature submissive guy seeks dominant person for disciplined rel. ALAWP+add. NTW. Box 346

DERBY/Burton: 42, med build 5'10" caring, loving likes countryside, walks, music, pets seeks 35+ for 121. Can accom. ALAWP. Box 347

MATURE Leics guy into keep fit & safe fun gives well disciplined amateur massage. Seeks sim for lunchtime meetings. Box 348

SHEFFIELD: Tall dark musc guy 28 seeks guy 25-40 dark, pref hairy with GSOH. ALAWP. Box 349

NOTTS guy 28, 5'10" goodlooking, brown hair/eyes, gen, HIV+ healthy GSOH seeks friends 25-35 poss 121. ALAWP. Box 350

LEICS: Slim, gym fit 55 n/sm, loyal, loving var int seeks active s/ac 28-38 slim-med honest, loyal n/sc guy for f'ship/121. ALAWP. Box 351

DERBYS/S.Yorks: Guy 27 tall slim handsome c/shv blond seeks n/sc 20-45 masc for horny fun, f'ship, poss 121. ALAWP+ph. Box 352

NOTT'M: Gray mouser seeks FAFHRD for affection, recherche conversation & intricate mock duels. Box 353

E.MIDS: Versatile 38 enjoys nights in/ out, cinema, music, walking, driving & more seeks younger 18+ for f'ship, poss 121. Box 354

SHEFFIELD/Derbys: Young 46 smoker/ drinker, tall, c/shv active, horny, relaxed seeks smooth slim guys 25-35 for safe self indulgent fun/f'ship. Box 355

U R 30ish n/sc bi/single/married looking for rel kissable father 60's who can satisfy most emotional. Leics area. Box 356

MIDS guy 39 goodlooking, honest, s/ac seeks guy around 50 & overfor f'ship, maybe 121. PIP. Box 357

ANYWHERE: Active 37 bear, hairy, moustache 16 stone, 6'2" looking for younger 18-25 for fun. GSOH & solvent, can travel. ALAWP. Box 358

SHEFFIELD: Tall slim 37 looks 30ish GSOH n/sm occ scene wltm w/e active guy upto same age for fun, f'ship poss 121. ALAWP promise. Box 359

E.MIDS: Uniformed guy 40 seeks others into police/army/navy/RAF uniforms for fun times & f'ship. ALAWP in kit. Box 360

LATIN guy 25 wltm sim masc intellectual & cute gay 18-30 for f'ship, poss 121. Any race. Box 361

FRIENDLY schoolmaster type, 54, seeks deserving student types 18-30. Offers produce favourable fantasies/desirable excitement. Wonderful opportunity for hesitant shy letters. Derby/20 miles. Box 362

GUY aged 70 seeks sim any age, interests gardening, painting, coach trips, home visits. ALA. Box 363

S.YORKS/Barnsley: Guy 32 med build honest s/ac, own place wltm black guys for safe fun. Married welcome. Disc ass. Total satisfaction. Box 364

N/SM (hence mainly n/sc) seeks n/sm 18-40. Can travel/accom. I'm tall, slim 40, c/shv prof gay. Any nationality welc. Leics/ Nott'm/anywhere. ALA. Box 365

NORTH Lincs: V.horny guy mid 40's youthful, playful GSOH seeks younger 18+ for fun indoors & outdoors, poss more. Fairly local please. Thinkers welc. Box 366

MANSFIELD: Att 36 c/shv, slim, s/ac n/sm GSOH offers TLC in return for loyal male 36+ for f'ship, poss more. Photo/phone app. Box 367

E.MIDS guy 50's slim, 6', n/sc, young outlook, c/shv, n/sm discreet wltm any nationality 25-40, f'ship, maybe 121. Photo app. Box 368

LEICS: Cute Asian lad 18 5'10" slim GSOH seeks lively white male 22-28 for f'ship, maybe 121. Gen reps only please. ALAWP. Box 369

NOTT'M guy 32 5'5" slim, c/shv interests theatre, walking, quiet nights in/out wltm sim understanding guy 28-38 for f'ship/rel. ALA. Box 370

## HELPLINES

CHESTERFIELD AREA LESBIAN LINE, Tue 7.30-9.30 pm. 01246-559431.

CHESTERFIELD HAND, Mon 1-3pm, Sun 7-9pm. 01246-550550

COVENTRY FRIEND, Mon, Wed, Fri, 7.30-9.30pm 01203-714199

COVENTRY LESBIAN LINE

Wed, 7.30-9.30pm. 01203-717166

COVENTRY MESMEN,

01203-224090.

DERBY BODY POSITIVE, Tue 10.30am-1.30pm, Thur 11.30am-4pm, 01332-292129.

DERBY FRIEND, Wed, 7-9.4 5pm. 01332-349333.

DERBY LESBIAN LINE, Wed, 7-9pm. 01332-41411.

DERBY AIDSLINE, Mon & Thur, 7-9pm, & Thur, 2-4pm. 0800-622738.

GRIMSBY/ SCUNTHORPE AIDSLINE, 01724 276660

GRIMSBY & DISTRICT GAY HELPLINE, Tue & Thur, 7-9pm. 01472-251818.

LEICESTER LESBIAN/GAY-LINE, Mon-Fri, 7.30-10.30pm. 0116-255-0667.

LEICESTERSHIRE AIDS SUPPORT SERVICES, Mon-Fri, 9.30am-5pm. 0116-255-9995.

LINCOLNSHIRE AIDS VOLUNTARY GROUP, Mon, Wed, Fri, 9am-9pm, & Tues, Thur, 9am-5.30pm. 01522-513999

LINCOLNSHIRE LESBIAN & GAY SWITCHBOARD, Thur & Sun, 7-10pm. 01522-535553.

MANSFIELD SEXUAL HEALTH & AIDS HELPLINE, 01623 672260

MANSFIELD/ASHFIELD POSITIVE SUPPORT, 01623-26254

NATIONAL BISEXUAL PHONELINE, Tue & Wed, 7.30-9.30pm. 0181-569-7500.

NORTH STAFFS LESBIAN & GAY SWITCHBOARD, Mon, Wed, Fri 8-10pm, Sun 1-3pm, 01782-266998.

NORTHANTS GAYLINE, Tue 6.30-9.30pm, 01604-35975.

NORTHANTS LESBIAN LINE, Wed 7-9.30pm 01604-250887

NOTTINGHAM LESBIAN & GAY SWITCHBOARD, Mon-Fri, 7-10pm. 0115-941-1454.

NOTTINGHAM LESBIAN LINE, Mon & Wed, 7-9pm. 0115-941-0652.

NOTTINGHAM FRIEND, Tue & Thur, 7-9.30pm, 0115-947-4717

NOTTINGHAM UNIVERSITY LESBIAN & GAYLINE, termtime Mon, 8-10pm. 0115-951-4999, internal 4999.

PETERBOROUGH FRIEND, Tue & Thur, 7.30-9.30pm, 01733-6 1499. Answerphone other times.

SCUNTHORPE GAY MEN & WOMEN, Wed & Fri, 7-9pm, 01724-271661.

S YORKS CONNECTIONS, Thurs 7-10pm & Sun 3-8pm, 0122-673-0703.

SHEFFIELD AIDS LINE, Mon-Thur, 7-10pm, 0800-844334.

SHEFFIELD GAYPHONE, Mon-Wed, 7.30-9.30pm, 0114-258-8199.

SHEFFIELD YOUNG LESBIAN GROUP, 1st & 3rd Weds, 7.30-9pm, 0114 258 1238

WELLINGBORO' GAYLINE Thur, 6.30-9.30pm, 01933-223591

E.MIDS: Young 60's guy seeks coloured/Asian younger 18+ guys for fun & f'ship. GSOH. N/sc, s/ac, sincere, discreet. Box 371

## PHOTOGRAPHER

Nott'm area seeks attractive guys 18-30 anywhere for fun sessions - small fee - recent photo please. Gay, bi, first time ad.

Box 372

NATURISTS! I'd like to contact anyone interested in occ nude evenings or w/end afternoons. Enjoy sharing massage. Box 373

BROWN & yellow filthy times with burly men 30+ sought by bearded dirty 35 y/o. Serious replies with photo (ret) only. Am I the only one out here? Box 374

## mixed personal

NOTT'M: Guy slim, fit, s/ac, GSOH, 40's seeks bi's for horny sessions, poss rel. Can accom, discretion guar. Photo app. ALA. Box 141

E.MIDS: Att cultured guy, 36, into the arts, countryside seeks lesbian friend, n/sc, n/sm for f'ship. Would consider live together MBA with right person. Box 142

CRAZY pre-op Transsexual seeks understanding gay male/female for f'ship. Likes cycling. GSOH. Poss 121 in future. N/s. ALA. Gen replies only. Box 143

GAY guy 26 seeks friendly open minded lesbian 20-35 for gen f'ship. Let's go pubbing & pull some guys & gals! Box 144

SPERM donor wanted. Absolutely no involvement. Must be in good health. Black donors very welcome. Write in first instance to Box 145

MODEL req's professional portfolio of photographs to gain modelling contracts. Willing to pose nude for some photos. Please enc examples of work. Box 146

NOTT'M bi couple into groovy music, films, pubs & Izzard seek sim for good times. Box 147

LEICS 30+ social group welcomes LGB members & friends to participate in social events. Nick 0116 243 4145 or Dennis 0116 253 2645

B.R. employees: UK wide social & support group for gays & lesbians. Regular meetings. Confidentiality assured. Write for details to Box 149

BI black female, shy, quiet, easygoing, var int seeks caring male or female 33-44 for f'ship & socialising. Box 150

## women's personal

SHEFFIELD: Everything but that special someone. Mature, sincere caring prof, var int, wltm sim affectionate 40's for special f'ship/rel. Box 493

HORNY loveable teddy bear seeks friends 19-26 in Leics. Boyish, ext sweet, hoping to enjoy lasting f'ship/scene exploration, poss more. Box 494

FEMALE 27 attractive, casual, loving seeks sim. Got everything except you. Can't

wait to meet. Poss 121. E. Mids/anywhere. Box 495

PinkskyoverNott'mcity Dyke 26 desires you to awaken her hi chi G spot. Box 496

DOES anyone enjoy books, walking, weekends away, travel, cats & eating out? Kind, supportive caring woman, 45, single, slim att seeks soulmate any age/nationality. Box 497

LEICS woman 40 seeks friend to chill out with. Me: small, into scene, dancing, keep fit, pool, martial arts, GSOH. So call me! Box 498

LESBIAN, 35 att, femme, mixed race seeks att v. butch 'not fat but big' lesbian for lasting rel. Must like kids. Notts area. Box 499

SHEFFIELD: Gay fem woman 32 blonde, lipstick, black leather into art, aerobics, cycling, hiking, scene seeks bi or gay dominant woman. ALA. Box 500

BOYISH lesbian 24 GSOH seeks f'ship/rel. I like music, sports, cinema. Looking for good times, laughs & maybe more. 23-32. ALA. Box 501

LEICS area: Fem gay mum 38 seeks fem ladies for f'ship, company, maybe more. Answer if you dare, our future perhaps to share. Box 502

LARGE gay female 52 wltm others. Enjoys nights in/out, animal lover. ALA. Box 503

LEICS/E,Mids: Female, 23, shy, easygoing, has one year old son. Wanting mutual TLC, poss 121. First time out. Must like children. Box 504

POST-OP Transsexual, 27, v. natural, unpretentiously feminine, sexy yet strong willed seeks unbigoted, understanding partner. Height 5.7 +, age 27-40. Pref Leics area. PIP. Box 505

GAY female 18 seeks friends, poss rel. Enjoy having great times and have lots of love to offer. Your age unimportant. Box 506

NOTTS female 23 wltm lesbians in Nott'm area for nights out or romantic evenings in. I'm fun, GSOH and worth the stamp. Box 507

49, Still searching single sexy Scorpio wltm soulmate. Honest, reliable with GSOH. ALA. S.Yorks. Box 508

LEICS lesbian 30's GSOH, small, short hair, slim, caring, sensitive, lonely needs attention & f'ship, love & romance. Box 509

DERBY/Notts lesbian 38, prof, var int, woodwork, pottery, gardening, sports wltm sim for f'ship especially Mansfield area. ALA. Box 510

BOYISH female 22 been hurt but would like a fem lesbian to help mend my broken heart. Must be forward & funloving 20+. Box 511

ATT fem gay woman 33 seeks sim for f'ship poss 121. I'm caring loving. Gen reps only, PIP. Lincs. Box 512

ANYBODY fancy a hot date? I'm 24 & looking for a special lady to share my affection with. Age unimp. ALA. Box 513

ARE you fem, n/sc, stylish, sane & love romantic dinners, wine, conversation? Early 40's att fem prof is giving up hope! Box 514

NOTT'M: Gay female enjoys sport, music, cinema, pubs seeks other easygoing GSOH lesbians 22+ to have good times. ALA. Box 515

PILLION rider seeks a big butch bold dyke with motorbike for fun, f'ship & days out. Photo please. Box 516

WE can't be the only two disheartened lesbians in Leics who meet for mutual support & f'ship, now can we? Please write to Box 517

GAY female graduate enjoys music, cinema, eating out seeks friends/penpals for socialising & f'ship. Age unimp. Box 518

NOTT'M: Feminine lesbian 33 wltm feminine lady for fun, f'ship, socialising, days out, holidays & sharing the occasional bottle of wine. Box 519

## accomodation

### NOTT'M:

Room in luxury 4 bed detached for n/sm prof. All mod cons, quiet close-to-city location. £175 excl.

Paul 0115 958 5651

LEICS: Room vacant in house share, own room, share facilities. Meals avail. 0116 243 3984 after 6pm.

NORTHANTS: Working gay person share nice house, lovely garden, CH, own room, parking. N/sm animal lover. £48 pw inc. Jay 01933 270320

## SHEFFIELD:

Pleasant attic room in civilised house to let to prof/student LGB from June. Share with bi woman, 30's. £35 pw + share bills.

0114 250 7240

LEICS: Room to rent close town, De-Montfort Uni. V. cosy & comfortable. Gay owner. Overseas students v. welcome. £45 weekly inc. 0116 251 8618

SHEFFIELD, central: Ideal Hallam Uni, single room, all mod cons, suit n/sm student or fulltime employed. £30 pw inc, exc phone. 0114 272 9201

NOTT'M area: Room available in pleasant house. £170 pcm (inc). Dawn 0115 929 0882

NOTT'M, Beeston: Pleasant room for gay person in shared house. Close railway, good bus routes. £40 pw inc exc phone. Bob 0115 967 7081

LEICS: Slightly disabled man req's lodger to share bungalow. Own room £25 pw + bills. 0116 243 4145

NOTT'M, Sherwood: Room to rent, lesbian owner. GCH, all mod cons. Female pref. £35 pw excl. 0115 960 6561

SHEFFIELD: Huge attic room in beautiful detached house. Excellent access to city & Peaks. Share with one other lesbian. £40 pw exc. 0114 236 7608

NOTT'M, Forest Fields: Direct honest woman with GSOH req'd to share with me & cat. £37 pw exc. FGCH, safe, quiet, garden. 0115 979 2657

NORTH SHEFFIELD: House share with lesbian. Garden, countryside. £150. Marie: 01226 741270

LEICS: Single room suit student or employed male. £35 pw inc exc phone. Meals avail. 0116 243 3984

## AMSTERDAM:

Central apartment available from May. 2/4. Weekend/weekly rates.

Phone Eric 00 3120 623 0055

NOTT'M, Meadows: Double bedded room in mixed shared house. £35 pw inc. Inc use of all mod cons. 0115 986 9118

LOUGHBRO: Nice room avail for lesbian in interesting house. Could be summer let only. 01509 217 854

LEICS: bright & sunny room available in shared house with owner. GCH, washer, phone. £85 pcm inc. Must have GSOH, apply 28 Barbary Lane. 0116 223 8952

## messages

Would the advertiser who placed Box 137 in the Mixed section of Outright! 72 please contact us with their full address as we have mail to forward!

KAIREN & LUCIE wish to announce their first anniversary on May 13th. Thanks to Outright! magazine for helping us to find each other through classifieds!

SMELLY B - Happy birthday! All my love, Bumpy'eadedbagger. XXXXX

Anyone help? I want my personal photos developing discreetly & privately. Box 73 M1

Hi Richard, remember the Steam Cafe? Still thinking of you & still want to hear you sing! Like the rabbit. Love, Rob.

MARTINE: Let me guess - was it my expensive taste in drinks? My feeble chat up lines? Age? Socks? None of the above?

PETE: Please contact Andi from Meadows a.s.a.p.

Johnathan, please write to Justin again, I lost your address and would really like for both of us to meet up somewhere!!!

## ♥ KAIREN ♥

Happy anniversary darling! You're the light that keeps me glowing warm inside! I ♥ you. Eternally yours forever - Lucie xxx

## COPY DATES

No. 74: 24 May

No. 75: 21 June

No. 76: 26 July

## PUBLICATION DATES

1 June, 28 June, 3 August

**HOW TO PLACE AN AD.** Complete the form below. Write clearly please, and punctuate! Keep ads short & sweet: **max 24 words.** We may refuse or amend ads. **One free ad per issue, must arrive by 23 May.** Enhance your ad in display for £4. Commercial advertisers write or phone for rates.

## CLASSIFIED ADS cut here

Complete and return to Outright,  
PO Box 4, West PDO, Nottingham, NG7 2DJ.


Please tick category: Mens ..... Womens ..... Mixed ..... Accom ..... Messages ..... Display ..... (enclose £4 cheque/PO)

Name.....

Address.....

Post code.....

**BARRIE  
WARD  
&  
JULIAN  
GRIFFITHS**

## SOLICITORS

5, Clarendon Street,  
Nottingham, NG1 5HS.  
Telephone (0115) 941 2622  
After hours (0115) 960 2324

# CELEBRATE!

Come and Celebrate! with lesbians and gay men together. A week of dialogue, workshops, fun, community and celebration. Chill out by the fire: canoe on the loch; work up a sweat in the sauna, dancing to the resident band or striding over the hills, learn or teach others to massage or wrestle or whatever takes your fancy, sing, talk, discuss, play, listen. The choice on this week is yours! 22nd-29th June 1996. Details from Ania (0113) 266 9600 or Robert (01829) 760771 or write to 'Celebrate', 5 Hill View Avenue, Leeds LS7 4PZ.

## DAN PARALYSES CITY

(continued from front page)

When do we want them? Now! echoed throughout the city centre and for two hours no traffic moved. Over the last two years DAN has been instrumental in taking disability into mainstream politics to highlight the inadequacy of the Government's Disability Discrimination Act.

At various times people attempting to get to work heckled and cursed the protestors, for delaying their journey to work while Nottingham's Evening Post headlined with 'Sympathy on the line' nicely counterpointed by a wheelchair user's 'Piss on Pity' slogan. Said Sharon: "Maybe non-disabled people can begin to realise what it is like to have our rights of access denied 365 days a year!"

The Robin Hood Line, two years old and without disabled access, was the afternoon target and wheelchair users were corralled in the car park for several hours whilst a DAN delegation negotiated with Notts Rail bosses. Later, to cheers from jubilant protestors, Notts rail bosses stated that access would be in place by September 1996. Local campaigner Liz Carr said this was a major victory for DAN.

The day ended with a funny but poignant cabaret in the Playhouse Theatre, dedicated by Cllr. Brenda Hilditch of Tameside (pic p. 7, top left) to Sue Napolitano who died a few days before the zap. If you would like more information about DAN or REGARD, the National Disabled Lesbian & Gay organisation, then write to DAN, 3 Crawley Road, Wood Green, London N22 6AN or phone (0171) 739 0810 or write to REGARD, BM Regard, London WC1N 3XX. (all photos by Richard McCance)

## PINEAPPLE INN

27 BURLEY'S WAY, LEICESTER. 0116 262 3384

Opposite St. Margaret's Bus Station

### NEW WEEKLY LINE UP

MONDAY - FREE DRINKS, RAFFLE

TUESDAY - FUN BINGO, PRIZES

WEDNESDAY - DRINKS

PROMOTIONS 'TIL 2AM

THURSDAY - DISCO 'TIL 2AM -

- ANY 4 BOTTLES, £5

FRIDAY NIGHT - LIVE DISCO,

DJ TONY 'TIL 2AM

SATURDAY NIGHT - LIVE DISCO,

DJ TONY 'TIL 2AM

SUNDAY STRIPPERS EVERY WEEK

DON'T FORGET WE ARE OPEN

FRIDAY, SATURDAY, SUNDAY

LUNCHTIMES, 12-4PM

# SHEFFIELD WOMEN'S CULTURAL CLUB

Paternoster Row, Grinders Hill, Sheffield.

Tel: 0114 272 1866.

**Monday 6th May, "The Women" - Lively accapella group from Buxton and for those who missed her before, political satire with "Magic Madge" 8.30pm**  
**Saturday 11th May, "Kate the Great" Comedienne 8.30pm**  
**Saturday 18th May, Writing Workshop Lesley Glaister 2.30pm** She reads her novels and signs her books at 7.30pm followed by guitar duo, "Tee and Rose" 9.15pm. Quiz each Thurs, prize money currently £40.

## OUTPOST!

Have *Outright!* delivered by first class post in a plain, sealed envelope. Send £5 cheque/P.O. for 12 issues to Outright!, PO Box 4, West PDO, Nottingham NG7 2DJ.

## MARSDEN'S BAR

13 Marsden Street, Chesterfield 01246 232618

Sunday 5th May - CIE - Hi-NRG singer

Wednesday 8th May - DIESEL - Stripper

Sunday 12th May FIONA RYAN - comedy singer

Wednesday 15th May - TBC - stripper

Thursday 16th May - Upstairs bar - once monthly female stripper - ANGEL

Sunday 19th May - MISS MARCIA - Fabulous Drag

Wednesday 22nd May P.A. - FARRAH - hear her new record "Together We Are Beautiful"

Sunday 26th May - KERRY WILSON - Comedienne

Happy hour every night, 7-8pm, Fosters, £1.30, Bitter, £1.10.

Food now available in the evenings

Free pool Tuesday nights

Published by Naff Co-operative Ltd. PO Box 4, West PDO, Nottingham, NG7 2DJ. (0115) 978 0124.

Printed by Anvil Press Ltd (TU) (a worker's co-operative), 119 Abbey Street, Derby, DE22 3SP. (01332 298 213).