

outright!

february 1997 issue 82

for gays, lesbians & bisexuals

free

Mardi Gras Rumpus!

Allegations that some clubs and pubs in Manchester's Gay Village have pocketed money donated by last year's Mardi Gras carnival revellers and intended for the Village Charity have surfaced in Manchester.

A joint letter from the Manchester City Council, signed by three prominent gay men, and obtained by Outright, urged gay businesses to cough up money they owe from last August's Mardi Gras by the end of January or face exposure in the media.

The letter signed by Cllr. Pat Karney, Robert Meaton, Chair of the Village Charity and Chris Payne, Chair of the Mardi Gras Planning Group says "Both the Village Charity and the City Council hope that all monies will be paid up, or provisions for payment in place by 30th January when accounts for fundraising and income for running Mardi Gras will be published." Though the tone of the letter is low-key it disguises some serious issues, not so far raised in public.

The Village Charity started Mardi Gras four years ago to raise money for men, women and children living with HIV and AIDS. and has grown from a small local event into a big-time 3-day carnival attracting over 100,000 visitors from home and abroad to the city over August Bank Holiday Weekend, and helping swell the city's coffers.

Over the years, gay businesses colonised the run-down, seedy area by Chorlton St. bus station turning it into what has become a prime city centre site, enlisting the help of the City Council. A spokesperson close to the Village Charity said, that officials including the City Council and Police seemed to be turning a blind eye to what is going on. "Money has been collected by some pubs and clubs and one-nighters under false pretences". This is even more galling because the majority of businesses concerned are making a lot of money out of the pink pound", he added. One of the unwritten

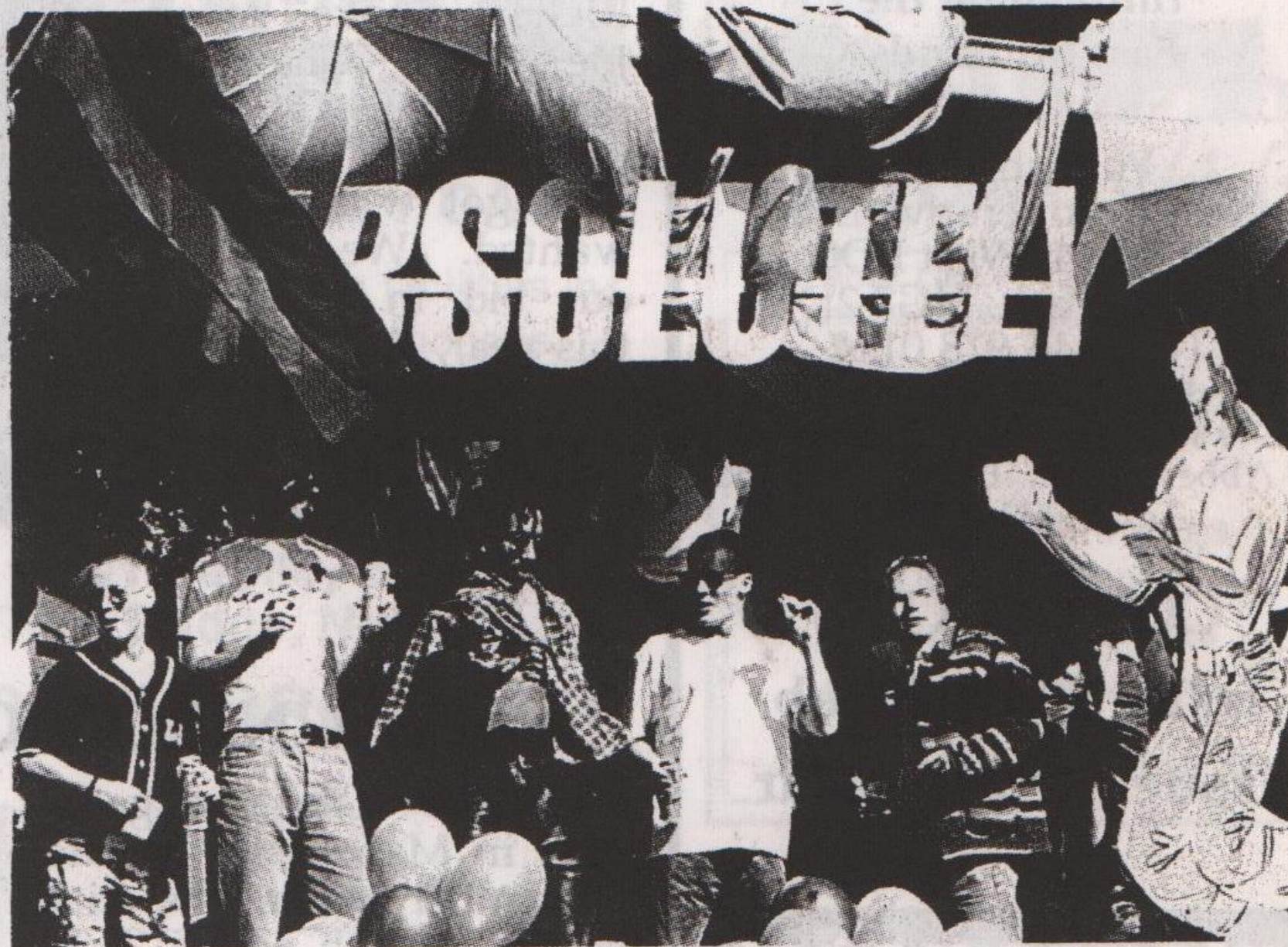
Disappearing Act!

Lincolnshire Police would like to question three women who took on the six month licence last August of the Greyhound Inn at Folkingham, nr. Boston, following their sudden unexplained disappearance several weeks ago. With them went a considerable amounts of stock and property. They also left a trail of unpaid electricity, oil food and beer bills and owe Outright money for advertising. The three women are Lyn Gowdy, Caroline Lamb and Sara Andrews who set up 'Sessions' at the Greyhound for gays and lesbians.

Their absence was discovered when the owner, Mark Gentle made a surprise visit to see how they were getting on and found the place shuttered up. "A lot of stock is missing which is currently the subject of police investigations", he said. "Before they signed for the licence I got a personal guarantee on their car so I would imagine the police will be wanting to trace that as well", he added.

continued on back page

Revellers at '94 Mardi Gras, photo: Gay Times



conditions to sponsorship was that in return for significant licence extensions, the clubs and pubs would pledge cash towards the events.

Nearly all the gay clubs and pubs and some businesses set up £1 door levies at last year's Mardi Gras as a donation towards the Village Charity. *Continued back page*



friday 14 feb
pink comedy night

scott capurro

bert tyler-moore

graham norton

& maria esposito

Y theatre, leicester

8pm • £10 (£8)

also appearing during the festival:

rhona cameron & sandra bernhard

LEICESTER

comedy festival

over 100 events in 30 venues

MIDLAND MAINLINE

main festival sponsor

hotline 0891 100 702

Calls cost 50p per min peak rate and 45p per min at all other times

outright!

**Issue 82
February 1997
Eighth Year!**

**4,500 copies distributed
monthly to over 120 outlets
throughout the
East Midlands**

Published by
Naff Co-operative Ltd.
PO Box 4, West PDO,
Nottingham, NG7 2DJ
Tel: 0115 978 0124
Printed by Anvil Press Ltd. (TU)
(a worker's co-operative)
119 Abbey Street, Derby, DE22 3SP
Tel: 01332 298213

COPY DATES

Issue 83 24th Feb

Issue 84 24th Mar

please note!

**NEW
phone numbers
from March 1st**

**0115 9607684
and
0115 9520770**

Gays The Word

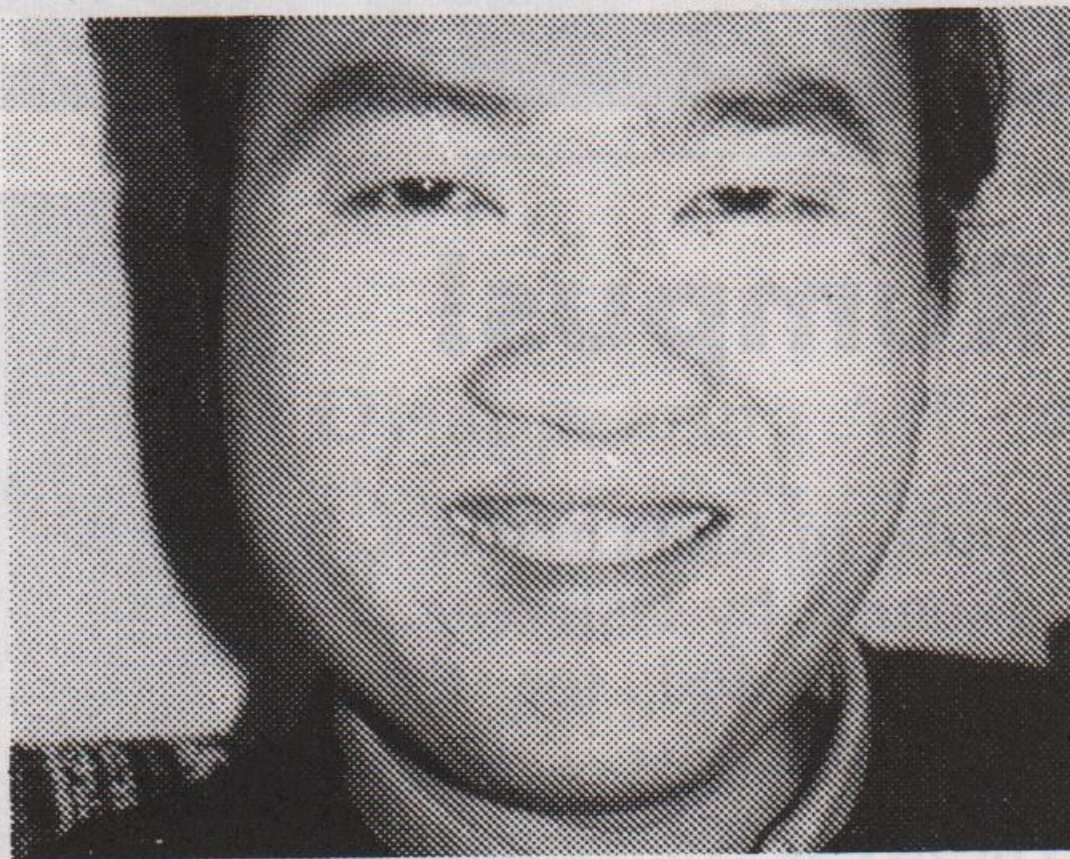
We have a wonderful selection of gay & lesbian books - fiction biography, coming out, travel, humour, erotica, cultural studies, history, tv/ts, relationships, crime, sex manuals, counselling, American imports. We also stock great cards, magazines videos. Our knowledgeable friendly staff are there to help. Come & browse.

**66 MARCHMONT STREET
LONDON WC1N 1AB
TEL: 0171 278 7654**

(Step off the London train at Kings X or St Pancras and you're just 5 mins walk away from Gays The Word)

LOTTERY LINE

A regional gay project in South Yorkshire was one out of nine nationally, that benefitted from the latest national Lottery Charities Board payout last month. Sheffield Gayphone receives a £10,828 grant phased over three years, towards running costs and the upgrading of equipment. OUTRIGHT spoke to Joe Tang, Chairperson of Gayphone who said: "We got what we wanted. We put our bid in earlier this year, and were very surprised, but pleased when our number came up!"



UNISON CONFERENCE

Over 500 delegates gathered in Manchester in late November when the city hosted the 4th annual Lesbian and gay conference of the country's largest union. The conference, opened by the General Secretary of UNISON, Rodney Bickerstaffe, discussed a wide range of issues ranging from mental health in the black community to parenting and discrimination in pension provision. Craig Nelson (pictured) convenor of the Nottingham UNISON Healthcare Lesbian and Gay Group was one of the delegates.



Since the privatisation of much of the Health service into separate independent healthcare trusts many of them have abolished progressive policies.

"Self-organisation is a relatively new idea for some Healthcare branches outside of local government where the arguments around lesbian and gay equality have not yet been generally won, so equal opportunities practices can range from good to the non-existent.

"In our branch things are very positive but the reverse is true in others where lesbians and gays still experience homophobia at work. It's important that equal opportunities are adhered to."

Craig is out at work, where he is a trainee nurse. He was one of the moving forces behind the setting up their own UNISON Healthcare lesbian and gay group which is open to all UNISON members who self-define as lesbian or gay. If you would like further information of this group or your nearest UNISON lesbian and gay group please contact Craig on 0115 969 1300 x40654. (office hours).

Slick Bananas Ceilidh

**Benefit for the OutHouse Centre &
Nottingham Bi-Women's Group**

Saturday 22nd Feb

**Queens Walk Community Centre The Meadows
Doors open 7pm Tickets £3/£2**

review

The Butterfly's Wing - Martin Foreman The Gay Men's Press

The story of the hostages in the Japanese embassy siege in Peru, has a certain topical interest for readers of this book. Diary extracts of two lovers are contrasted. Andy is a hostage in Lima, a prisoner of the Shining Light Maoist guerrilla movement. The story is about the attempt of his lover Tom to get him released by paying a ransom.

The major theme is about the effects that exploitative colonialism has in Latin America. Andy works for an international agency giving aid to the Peruvian government. The Shining Light movement have an ideological hatred of all such foreigners. They use terrorism to disrupt.

The drama comes when Rosa, Andy's guard, knows he is gay. She has picked up from the British tabloid press human interest story about Tom the abandoned gay lover. The Shining Light are homophobic and Andy is viciously raped. The story ends with Andy being shot before any money can be paid over.

Both men give an account of their life up to this point - how they met and fell in love. Tom's life as an unsuccessful market gardener is contrasted with Andy's international travels. Their strong affection for each other is emphasised throughout. It is this positive affirmation that is the strength of the narrative. For once the sadness about the transient nature of gay love is not AIDS induced.

Nick Tyldesley

**Do you own
or have an interest
in Classic Cars?**

**Why not join the Gay
Classic Car Group**

**Every car welcome
from Reliant to a Rolls**

**Regular local meetings
events and magazine**

**Write for a membership
form to:**

**GCCG, BM Box 5901
London WC1 N3XX**

No Block on Lottery Cash for Gay Groups

Just what planet is John Major from? - Well, whichever one it is, he's definitely lost contact with the mother-ship! Doesn't he think gay people buy Lottery tickets? As we all know, around 28 p out of every shiny little pink pound we give to Camelot is split between 5 'good causes' - sport, the arts, heritage, the millennium fund, (obviously, this fund IS specifically for aliens - architects from another world usually) and last but far from least, the National Lottery Charities Board.

Now, every project that applies for funding receives the same information pack and the same application form. To be successful a project has to meet the Board's criteria for the current funding round - the last one was Health, Disability & Care - it has to be worthwhile and it has to meet an identified need. Obviously, applicants also have to show that they are capable of delivering the project, handling the finances adequately etc.

Once an application form is submitted, every single one goes through an identical assessment procedure and based on this receives full funding, part funding or no funding. Not that failure to be given a grant is any indication of a project's worthiness - there are always more applications than there is

money to go round and sadly, many very good applications have to be turned down in each round.

So, given that there is an incredibly level playing field for all applicants - why is it that every time the Board awards a grant to a non-heterosexual group, John Major and/or various Cabinet Ministers fell impelled to give us their 'Outrages of westminster' impression and set the ever-rabid tabloids baying for blood?

The Gay Community has a track record it would be hard to beat for setting up the services it needs and finding the money from somewhere to run them. But there has to be a limit on the number of fund-raising Drag Balls, Pink Swimathons and Abba-themed Jumble sales that any one community can support. We are the public and we're entitled to our fair share of public money.

The charities Board has however stood firm in the face of controversy and blistering criticism, especially from the straight Press. Its public statements, from the Chairman down, have defended its funding decisions and the validity of the projects it supports, refusing to bow to either government or media pressure. And staff have been very happy to receive messages of support congratulating them on standing up for diversity and recognising that many groups in our society are particularly marginalised and disadvantaged.

So don't be downhearted - if your group has a project that needs Lottery cash to get it off the ground, now is the time to apply. The themes for the current round are 'New Opportunities and Choices' and 'Voluntary Sector Development'. The application form is quite lengthy but the guidance notes provided are extremely clear and helpful. The timetable for the current round is:

APPLICATION PACKS - available now

Telephone 0345 919191

Textphone 0345 556656

LAST DATE TO REQUEST INFORMATION PACKS

5pm 7th March 1997

DEADLINE FOR RECEIPT OF APPLICATIONS

5pm 4th April 1997

ANNOUNCEMENT OF GRANT

Summer 1997

...and Good Luck!

THE MENS SEXUAL HEALTH PROJECT

45 King Street Leicester LE1 6RN
(0116) 254 1747

We offer information, counselling and support around HIV/Sexual Health, safer sex, relationships and sexuality.

We provide free condoms, lubricant and dams on request.

We are a team of 3 Gay men:-

Andy Griffiths - Project Co-ordinator

Dylan Parris - Project Worker
(Black men who have sex with men)

David Peet - Project Worker (Cottaging & cruising issues)

OPENING TIMES

Monday 12 noon - 4pm

Tuesday 12 noon - 4pm

Wednesday The Centre is Women Only

Thursday 12 noon - 4pm

Friday 12 noon - 4pm

2nd Saturday of every month 12 noon - 3pm

ALL OUR SERVICES ARE FREE AND CONFIDENTIAL

Available free to all men who have sex with men regardless of age, sexuality, race, religion, disability or antibody status.

TRADE

is a group of gay and bisexual volunteers who want to do something about the HIV epidemic.

If you are interested in getting involved, why not give us a ring.



TRADE

We are particularly keen to recruit volunteers from Black communities who are currently under-represented in our organisation.

LEICESTERSHIRE AIDS SUPPORT SERVICES



"WHAT CAN YOU DO
ABOUT AIDS?"

Contact us now and find out!

OUR NEXT VOLUNTEER TRAINING PROGRAMME STARTS APRIL 1997

All people interested in Leicestershire are welcome to apply. People available in the daytime; People who live in wider Leicestershire; and Black and Asian People are particularly encouraged to apply.

Give Gordon Warren a ring on 0116 255 9995 or write to
LASS, 53 Regent Road, Leicester, LE1 6YF NOW!

Leicestershire AIDS Support Services is a registered charity No. 1023914

Getting the Message

The 'Message' promises to be one of Volcano's most exciting and accessible pieces of theatre - a collaboration with Tony Harrison, one of Britain's greatest living poets and dramatists; and Nigel Charnock, founder member of DV8 Physical Theatre and now an acclaimed director, choreographer and solo performer.

The Message time-travels and globetrots from the Fall of Troy to the horrors of the Twentieth Century - first hand accounts of concentration camps, Bosnia and the rise and fall of the Berlin Wall; mixing factual events with our fictional and dramatic memory of the Greek, Medieval and Shakespearean drama.

Monday, 24th February, 7.30pm, Bonington Theatre, Arnold Leisure Centre, High Street, Arnold Nottingham, Tickets; £5 (£3.50 concs).

Available from: Classical CD, The Lace Hall, Nottingham (0115) 948 3832, Arnold Leisure Centre 90115) 967 0114.

CASH in on

volunteering

CASH, the North Derbyshire based Community Sexual Health project is recruiting volunteers to support their work both in the area of sexual health promotion outreach and HIV/AIDS support services.

Volunteers are also required to get involved in general awareness fundraising for the Project. If you are interested and have any time to commit please give Darren or Richard a call on **Chesterfield (01246)**



Kerry Wilson, singer/impressionist, appearing at Cafe Quench Style Bar, 16th Feb, Nottingham.

VOLCANO THEATRE

presents
THE MESSAGE

written by Tony Harrison
directed by Nigel Charnock



Nottinghamshire
County Council
Leisure Services

THE MESSAGE promises to be one of Volcano's most exciting and accessible pieces of theatre - a collaboration with Tony Harrison, one of Britain's greatest living poets and dramatists; and Nigel Charnock, founder member of DV8 Physical Theatre and now acclaimed director, choreographer and solo performer.

Monday 24 February 7.30 pm
Bonnington Theatre

Tickets £5 /£3 concs

Available from Classical CD The Lace Hall Nottm and
Arnold Leisure Centre High St Arnold Nottm

PromenAID....

Leicestershire's annual HIV fundraising event at the Haymarket Theatre, once again raised over £10,000 for local HIV/AIDS organisations at the benefit bash last month. This brings the total raised to over £100,000 this last nine years. "Services for people with HIV in Leicestershire are among the most comprehensive in

the country, largely thanks to the voluntary organisations which Promenaid helps to fund", said Liz Blyth, Service Development at Leicestershire AIDS Support Services. Hundreds of people enjoyed a fun-filled afternoon of music and entertainment in the foyer, followed by a musical extravaganza on the main Haymarket



Safer
SEX

BOTTOM
the line

Photo: Matthew Torenson

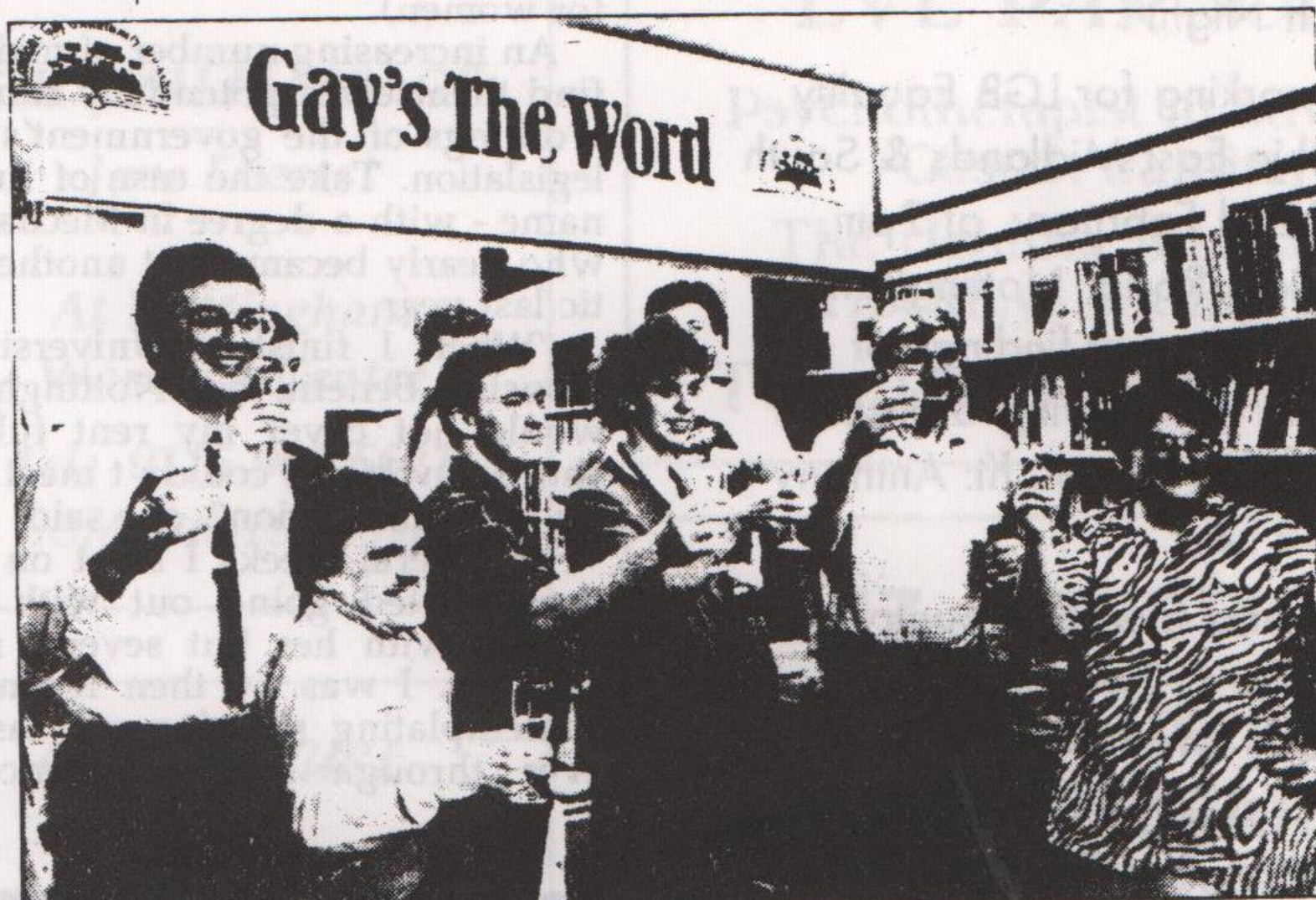
Gay's The Word!

A number of organisations grew out of the Gay Liberation Front in the early 70's. One of them began as a bookstall in a Community Arts Theatre in South London. The success of this led one member of Icebreakers, the London gay and lesbian befriending group to look for permanent premises to set up a gay-identified bookshop in Central London. They eventually found a shop they liked and began negotiations with the local Council. "Camden Council Officers were hostile to us having the shop but Ken Livingstone who was a Camden Councillor at the time, made sure we got the premises", said Paud Hegarty the Manager.

Gay's The Word - the title borrowed from an Ivor Novello musical - opened its doors in February 1979 in its present premises at 66 Marchmont Street, near King's Cross Station.

Its aim was to provide information in commercial space in London for people to meet and where serious literature could be sold. During the day the shop was a real haven where you could sit and sip coffee and absorb the lesbian and gay ambience, posters, and more important, be part of its visibility. The shop also doubled as a meeting room for new groups finding their feet, in a city still devoid of gay-friendly meeting spaces.

It has always been possible to publish good gay and lesbian literature with no discrimination at the overt level. Writers like Oscar Wilde and Gore Vidal's reputation extended far beyond their gay identity, yet there was nowhere for the new emerging young gay writers to publish and sell their work. Independent gay and feminist presses helped open up the market for a readership clamouring for lesbian and gay sensibility, initially appetized by the fortnightly newspaper, Gay News and the London freebie, Capital Gay. It's a fact that, while other lesbian and gay businesses have mushroomed in the last two decades, Gay's The Word is still the only place in the country with 'Gay' over the door. "By coming into the shop you were making quite a political statement at the time", says Paud who has been at the shop since 1983.



Cheers! Directors of Gay's The Word celebrate their victory with Marie Staunton (centre) of NCCL

In 1984, the bookshop was raided by the Customs & Excise when hundreds of American imports were seized including works by such writers as Genet, Ginsberg, Edmund White, Kate Millet, Jean Paul Sartre and Oscar Wilde. The case aroused fierce international protest from authors, publishers and civil liberties groups and led to a vigorous campaign around censorship in the Defend Gay's The Word Campaign. When the case against the shop was finally dropped in 1986, on the instructions of the then Treasury Minister, Peter Brooke, the majority of the books were returned. Though the case had cost the shop dear in terms of impounded stock, GTW became a cause celebre in publishing circles, straight and gay, around the world.

Over the years the meeting space has shrunk as the books have encroached, but with the growth of other lesbian/gay friendly venues in London people now come mainly to browse and buy rather than to sit and chat and scan the noticeboard, but on Pride weekend the shop is always packed, with locals and out-of-towners up for their annual fix.

"For many women who use the bookshop, it enables them to feel OK about getting lesbian books, where they might be less confident elsewhere. They know in advance that the staff will be helpful and supportive. We are an attitude free place", says Jane de Silva one of the workers.

Gay's The Word together with Silver Moon Publishers and Gay Men's Press were instrumental in opening up the market for new writers and readers. Once the market had been successfully tested, and found to be lucrative, mainstream bookshops began cashing in on the strength of the pink pound. The result of this is that lesbian/gay/bisexual literature has become more accessible to isolated lesbians, gay men and bisexual people in Britain's High Streets. But Gay's The Word is still a front-runner. "We are increasingly becoming a specialist bookshop, with a mail order and antiquarian section, researching and supplying books that major chains can't or won't provide. A bit like a non-lending library, where you buy rather than borrow!", laughs Paud.

Richard McCance

(See GTW's ad. on page 2 of this issue)



Paud Hegarty and Jane de Silva, two of the three workers

NEW!

0891 91 00 19


PARTY HOURS!

8-9pm and 12-1am

Exchange messages and numbers with LOCAL guys ON LINE NOW! (24hrs)

FAST and easy to use!

It's SAFE, PRIVATE, FUN and IT'S LEGAL



GAY PHONELINE
N. YORKSHIRE

Calls charged @ 45p per minute, cheap rate: 50p per minute at all other times. EMS, P.O. Box 80, LS1 4TS

CAMPIONS SOLICITORS

ACCIDENT?

FREE LEGAL ADVICE

NO WIN - NO FEE

45 - 47 MANSFIELD RD

NOTTINGHAM NG1 3FH

TEL: 947 6373

FREE CAR PARKING

NEAR

VICTORIA CENTRE

▽ briefly.....

▽ 4th February, 'Hidden Talents' Cabaret and disco, £2/£3.50, 8.30-12.30am, Skyy Club Alfreton Road, A good night out!

▽ 4th March, 'Hidden Talents', 1st April, 'A Bit of a foolish Night'.

▽ Pink Chalk, working for LGB Equality in Education in the East Midlands & South Yorkshire, Sat. 22nd February, at 2pm, ICC, 61b Mansfield Road, Nottingham. Guest speaker will present findings of recent research on the bullying of lesbian and gay teenagers in school. ffi: Anthony on 0115 958 5814.

▽ Lesbian, gay and friends, Country and Western Tea Dance & Two-Step Workshop, Sunday March 9th, 2.30pm-6.30pm, at City Rooms, Hotel St. Leicester, Beginners' Two Step Workshop, 2.30pm-3.45pm. C & W. Tea Dance 3.45-6.30pm, tuition with Joy Anagostis, refreshments and bar, tickets £5/£3 available on door or in advance from Leicester, LGB Centre, 45 King St. Leicester, Cheques payable to 'Dance Events'.

▽ 14th Feb Leather Valentine in Leicester Men's All-Leather club night organised by East Mercia MSC 0133 236 1056

▽ 23rd Feb Lesbian Breakfast The Lesbian Centre NWC 30 Chaucer St Nottm - food, drinks, paper, music etc. Children welcome. Jane 0115 960 6270

▽ Nottingham LGB Forum are planning a big East Mids event later this year for more info or to get involved - 0115 941 0652

▽ The Nottingham Bi-Women's Group Diary Dates flyer for February and March is now available. Pick one up from the Women's Centre, or call the Bisexuality Info Line (24h answerphone) on 0115 916 1532 to be added to the mailing list.

The Women's Ceilidh

Saturday 1st February 8-11.30pm
YMCA Shakespeare St Nottm
£6/£4/£2.50

Wheelchair Access Women only
Please bring your own refreshments

The introduction
agency for Gay
Professional Women.

Woman to Woman

For full details, write to:
"Woman to Woman",
ISIS Introductions, P.O. Box 114,
Beeston, Nottingham NG9 6BL.

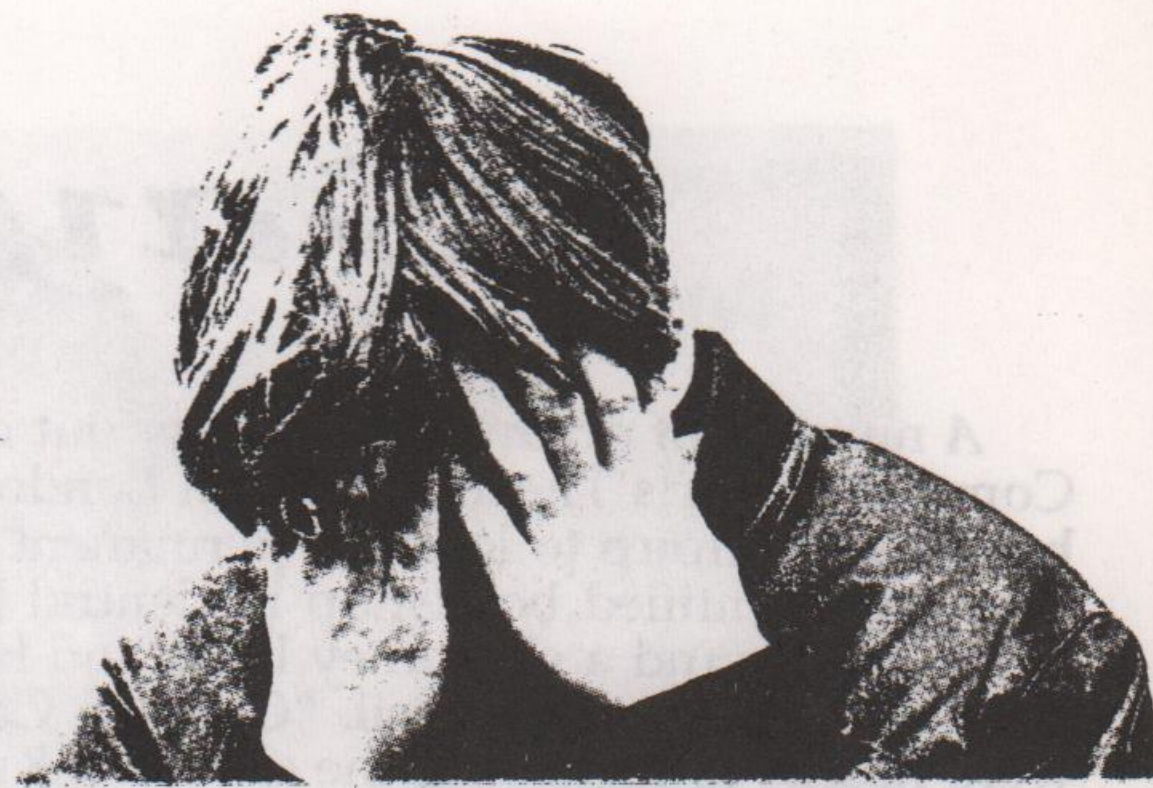
Somewhere welcoming ...

Last winter in London alone, 74 people perished while sleeping rough. The life expectancy of someone sleeping rough is just 42 years (the national average is 74 years for men and 79 for women).

An increasing number of mainly young people find themselves potentially homeless due to the workings of the government's housing benefits legislation. Take the case of Ruth - not her real name - with a degree in Mechanical Engineering who nearly became just another homeless statistic last year.

"When I finished University I applied for Housing Benefit, but Nottingham City Council would not cover my rent fully, and it left a shortfall which I couldn't meet so I had to leave my accommodation", she said.

"For several weeks I slept on a friend's sofa. I then started going out with this girl, and I moved with her but several months' later we split up. I was by then feeling depressed and contemplating sleeping out last October. However through a chance encounter I visited



Nottingham Women's Centre who referred me to Noelle House, which is a women-only house in the city. Priority is given to black women, lesbians and people living with mental health problems".

Noelle House, owned by Macedon, is the only women-only space they have and can take up to eleven women at any one time. "It's been great because I've not long been out as a lesbian and I wanted somewhere safe to live with other people. I know I can stay as long as I need to get on my feet and there's lots of support on hand if you need it", she added.

Macedon with six houses in Nottingham was founded in 1973 by a group of Christians, and was originally a coffee bar project which grew into a night shelter, now running to 170 spaces in six houses citywide. Director of Macedon, Christine Russell said her first priority on arrival was to make the houses physically and emotionally safe. "Over the years I have become more aware of lesbian equality and with it, social justice. It has taken us a long time to get dedicated accommodation but well worth it".

new recruit!

From this issue Cathy White joins the **outright!** collective. Cathy will be well known to some of our readers from her time at **coda** Computer Resource Centre and through her wider involvement in the Nottingham Voluntary Sector. She brings a lot of new ideas and skills with her and is already working on a new style layout for our March issue.

She is hoping to cover more issues of interest to women and is trying very hard to think of a good idea for a strip cartoon.



**WOMENS
coffee
bar**

every Wednesday 12pm-2pm
45 King Street
dental dams lubricant and
safer sex information available
0116 254 7412

USE YOUR BUYING POWER

HIZIKI

Buying from countries and companies with a commitment to social justice - Hiziki has the widest range of wholefoods, fresh bread, take-away snacks, organic fruit & veg, vegetarian convenience foods, and organic wine & beer in Nottingham. We also stock many natural remedies, cruelty-free toiletries & environment friendly cleaning products.

15 GOOSEGATE, HOCKLEY
NOTTINGHAM

**FOR POSITIVE
CHANGE**

anvil press print & design

- ★ Leaflets/Flyers
- ★ Brochures
- ★ Newsletters
- ★ Business Stationery
- ★ Posters
- ★ Booklets
- ★ Stickers
- ★ Carbonless
- ★ Envelopes
- ★ Full Colour

119 Abbey Street, Derby
Tel: 01332 298213

Anvil Press is a Workers Co-operative

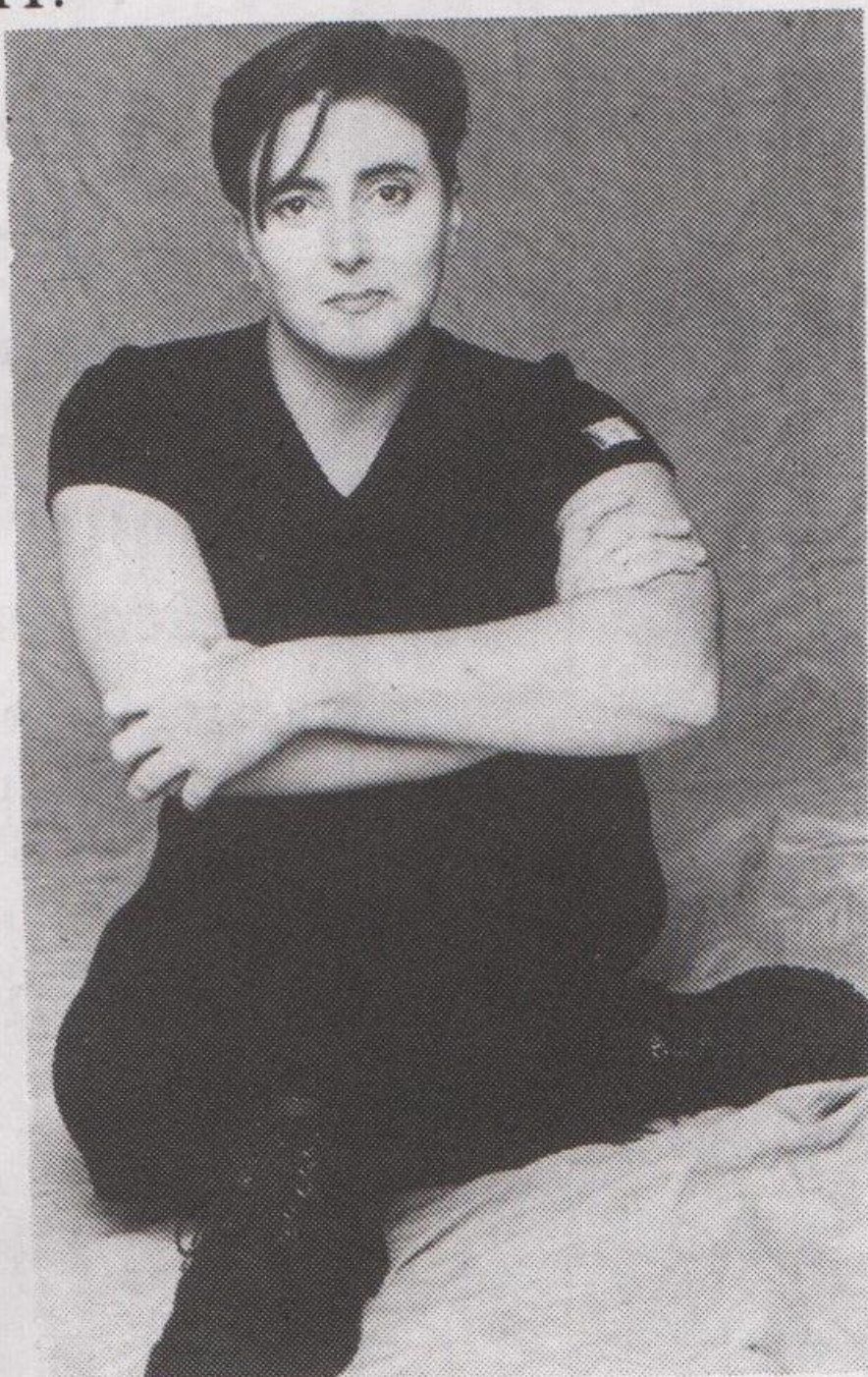


Over 100 events in 30 venues, sounds like a mini-Edinburgh Festival, well actually it's the Leicester Comedy Festival, the fourth to hit the Region in as many years. A whole wealth of attractions including Tony Slattery with the Comedy Store Players which runs at the Haymarket Theatre, Bobby Davro, Craig Charles, Jeremy Hardy, Jack Dee, Ned Sherrin, Rory Bremner at other venues, plus many more.

But the biggie for readers of Outright is likely to be Sandra Bernhard, star of Roseanne in 'Excuses for

Bad Behaviour', playing at De Montfort Hall, Leicester on 15th and 16th February, 8pm. Tickets are £18 and £15. Box office 0116 233 3111.

Other treats are 'Think No Evil of Us', playing the Haymarket Studio, 7.45pm, Tuesday 11th February. David Benson's uncanny impersonation of Kenneth Williams unlocks the complex character of one of Britain's greatest entertainers in this exhilarating, semi-autobiographical, award winning show, from this year's Edinburgh Festival.



Rhona Cameron appears at the Y Theatre on Wednesday 12th February at 8pm. Weightlifter, Scot and all-round Babe, she is the most exciting female stand-up to grab a mike for many years. best known for presenting BBC2's 'Gaytime TV', she visits this year's Festival after a sell out run at Edinburgh and London.



Don't miss the Pink Comedy Night with Scott Capurro & Friends, What could be more desirable on Valentine's Night? Scott Capurro (star of 'Mrs. Doubtfire', 1996 Edinburgh festival and 'The Stand-Up Show') is joined by some of the best gay comics around; Bert Tyler-Moore (BBC TV's 'Gaytime TV'), Graham Norton (ITV's 'Carnal Knowledge') and Maria Esposito (C4's 'Out'). They'll all line up at the wonderful Y Theatre especially to entertain and delight you (and your partner?!)

The Out House - Your Questions Answered

What is the Out House?

The Out House is the lesbian, gay & bisexual centre-to-be for Nottingham.

What's happened so far?

There's over '60,000 in the bank, and a building that looks potentially suitable.

I heard of the Out House years ago - why don't we have a Centre yet?

Two things took most of the time - getting the money, and finding a building.

Initial funds came from within the local LGB community, and built up slowly. Then in 1994, an anonymous donation of '40,000 made a big difference.

Market research showed a clear consensus that the building ought to be in the Hockley area, and that it must have good access for people with mobility difficulties. Most buildings in Hockley are on multiple levels and aren't suitable for a lift, so it's taken a while to find anywhere that fitted those requirements.

What's next?

The committee has identified a suitable space, and the membership's viewed it and voted to negotiate for a lease. (There will be more details on the building when things are more definite.) The organisation needs to become a legal entity so that it can sign the lease.

So is it really happening this time?

There are still no guarantees - nothing's been signed yet, and unforeseen problems could still arise. In that case, it'll be back to looking at buildings again. But so far it's looking likely.

How can I get involved?

Membership starts at £4, although many people pay more.

If you're part of a gay or gay-friendly community group who may want space in the centre, get in touch and make your views known to the architects. Out House would also welcome approaches from people interested in running the coffee shop.

Committee meetings are currently 2nd and 4th Wednesday in the month, 7.30, at the Queen's Walk Community Centre, Queen's Walk (not far from the railway station).

To find out more, write to the Out House Project or visit a committee meeting.

What will the centre be like?

The Out House vision is of an inclusive, welcoming safe space, where we are visible, empowered and at home. How that looks in practice depends on what the membership wants... so if you want to have a say, this is a good time to join.

Jennifer Moore

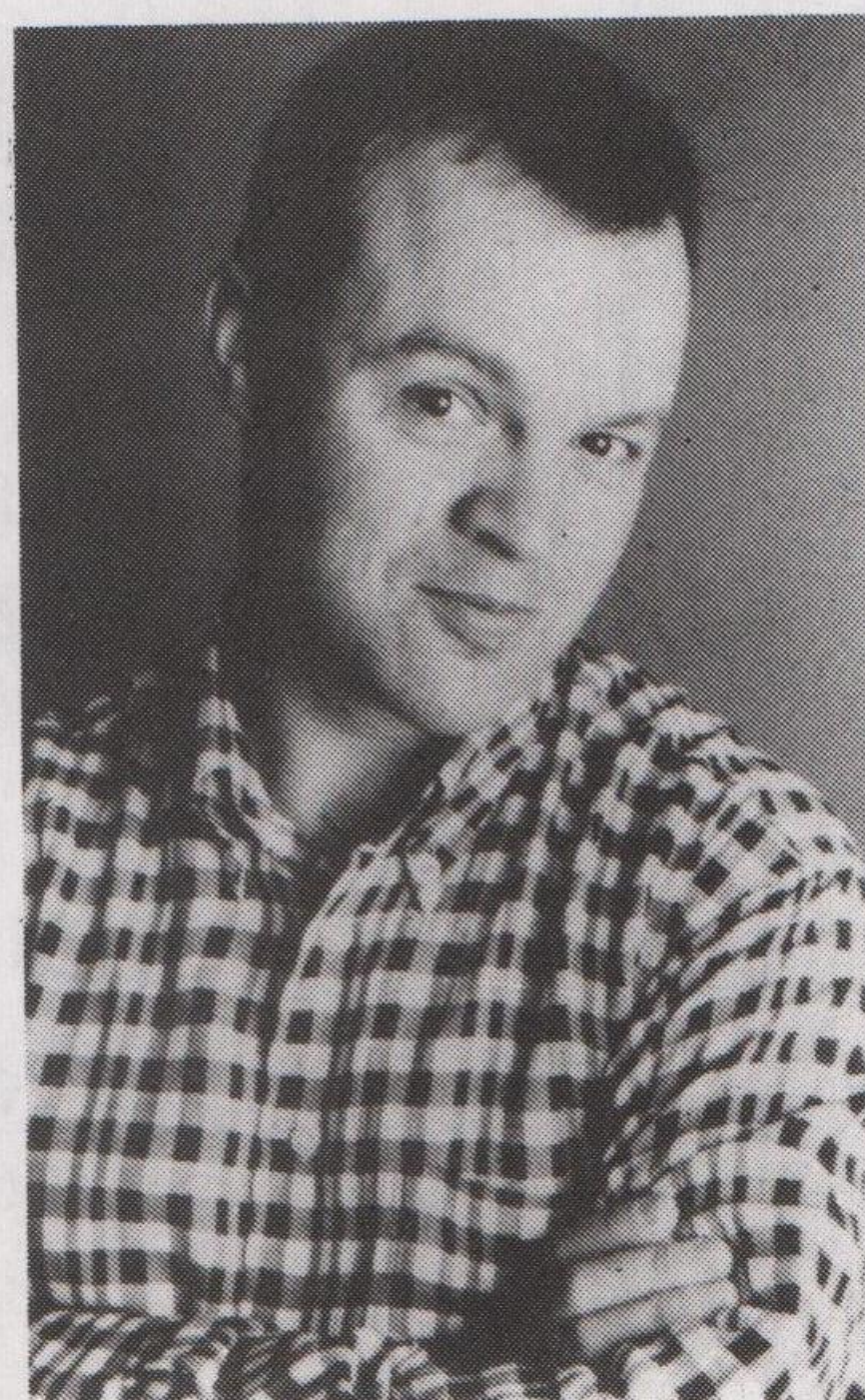
Next Committee meetings:
12th & 26th February.

Contact:
The Out House Project,
Box 11, 118 Mansfield Road,
Nottingham NG1 3HL.

Box office:

0116 255 6507.

Running alongside the live acts are a wide variety of comedy films to please most tastes. If you would like a copy of the comedy festival programme contact 0116 291 5511.



HIKING DYKES

Sheffield - walking group for lesbians and women questioning their heterosexuality.

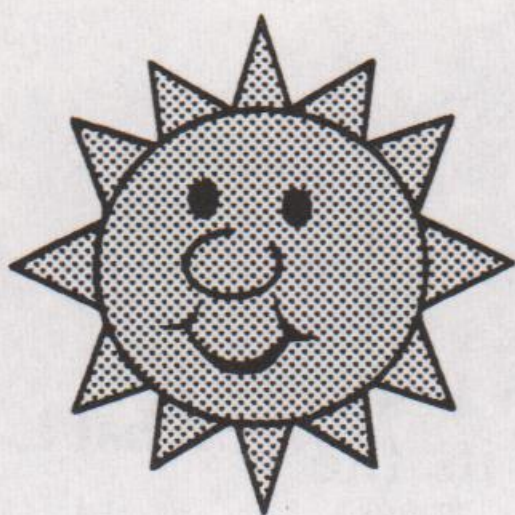
Sunday Feb. 9th, Win Hill from Yorkshire Bridge and around Ladybower, steep initial climb. 8 miles Meet in Heatherdene car park, GR203854, for 10.30am start.

Sat. March 1st, Upper Derwent Valley, 9 miles, could be boggy! Start accessible by bus. Meet Kings Tree, Fairholmes car park, GR 167938. ffi: Deena 0114 268 6409, Pauline 01623 550209.

Leicester - a group for all women not strictly lesbians. **Sunday, 2nd Feb**, Walk in Bradgate Park area, 3 miles, with pub stop, transport provided, children and dogs welcome, Meet 10.30am 45 King St. Leicester, Monday, 3rd Feb, Planning meeting at LGB Centre, 45 King St. Meet 7pm, everyone interested in the group welcome to attend. ffi: Helen on 0116 291 2128.

Nottingham - a walking group for lesbians only.

Sunday 16th Feb. Meet in car park at Cauldwells Mill, Rowsley, GR255658, for a 10.45am start for this 6 mile walk. Bring packed lunch. We try and finish at a tea shop! well behaved dogs tolerated. Check nature of walk with contact to see if suitable for children. ffi: Mo 01509 213894.



WORKING FOR WOMEN



LARAIN DEL BUONO
Solicitor

*DIVORCE, COHABITATION,
INJUNCTIONS, FAMILY
MATTERS, WILLS, PROPERTY*

*Barrie Ward & Julian Griffiths
5 Clarendon Street
Nottingham*

*Tel: 0115 941 2622
Fax: 0115 924 0485*

INFORMATION

around safer sex, HIV/AIDS and other sexually transmitted diseases

ADVICE & SUPPORT

on all sexual health issues, physical and emotional

TRAINING

around sexual health and sexuality, anti-homophobia etc.

LEAFLETS & POSTERS

and other resources

FREE CONDOMS

also water-based lubricants and dental dams

Available free and confidentially to everyone, regardless of age, sexuality, colour, race, religion, disability or HIV status.

CONTACT:

Richard Marnott
4 Rose Hill, Chesterfield
S40 1LW Tel: (0246) 559431

UNISON

NOTTINGHAM HEALTHCARE LESBIAN AND GAY GROUP

Regular meetings of lesbian and gay members of UNISON

Further details:

Craig Nelson, L+G Confidential,

UNISON Union Office,
Duncan MacMillan House,
Mapperley,
Nottingham.

*If you want to be heard
speak in UNISON!*

MACEDON TRUST

*Are you homeless or
threatened with
homelessness?*

We offer low-level supported accommodation in safe and secure shared houses within the Nottingham city area

If you need to know more
please call us on

0115 924 5722

between 9am - 5pm
Monday to Friday

LOOKING FOR NEW FRIENDS?

Then Leicester Gay Group, a social and befriending group for gay men of all ages, wants to hear from you.

Wide variety of social activities and meetings for newcomers held fortnightly in the centre of Leicester.

Interested?

Phone Chris on
01509 415 272

mushroom

B.O.O.K.S.H.O.P

Now more gay and lesbian magazines than ever!

including
The Advocate
and Girl Friend

10 Heathcote St, Nottingham
NG1 3AA. 0115 958 2506

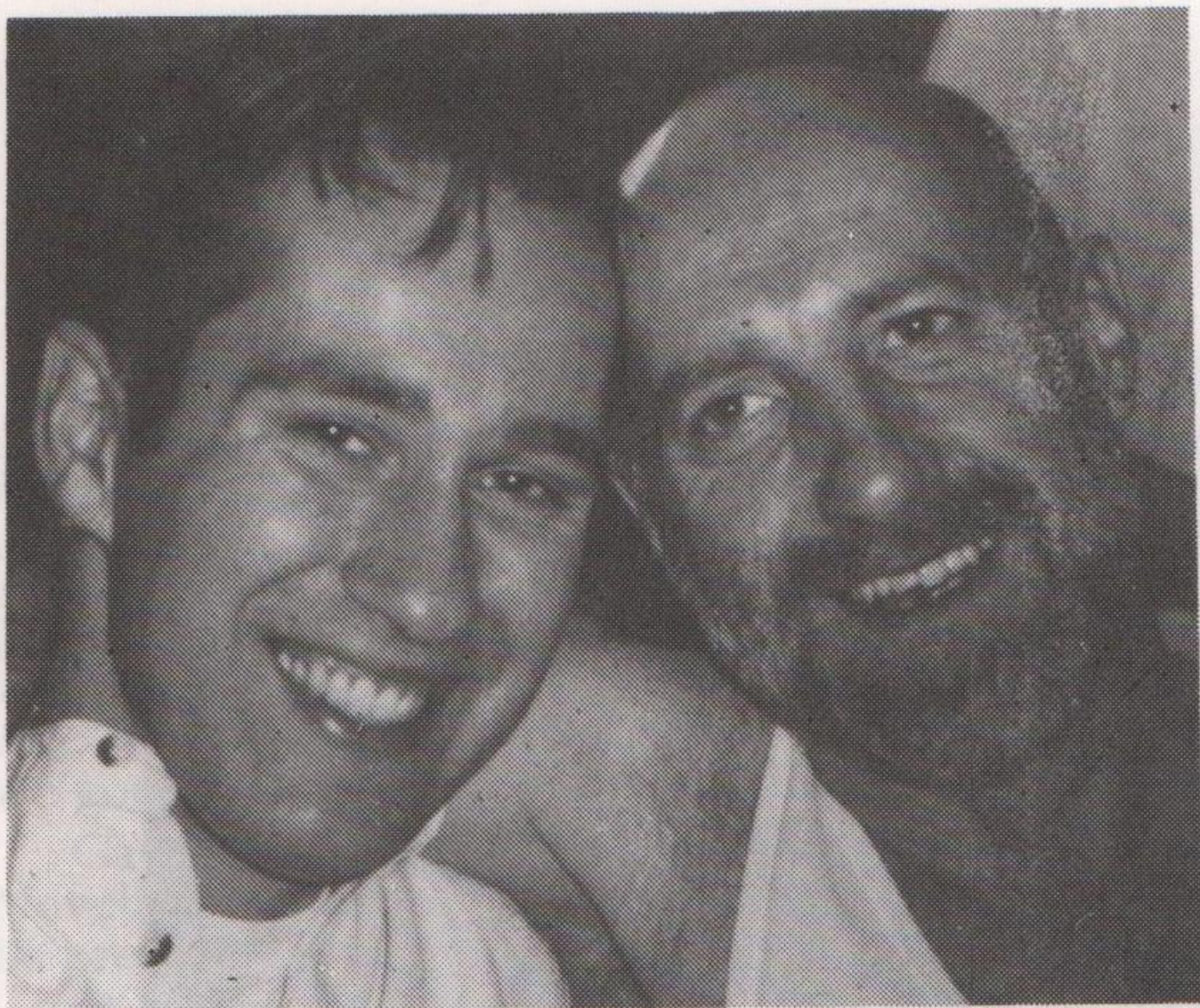
DERBY AIDSLINE

Worried/confused about HIV/AIDS?

For confidential advice and information, phone FREE on Derby Aidsline

0800-622738

Mon & Thur 7 - 9pm
Thur 2 - 4pm



Stonewall Breaks are fun!

Pictured are Neil and Lawrie enjoying a laugh at a Stonewall Breaks singing weekend. These weekends, once a month are a chance to spend time together, on a range of different activities and maybe make new friends. We use comfortable gay-safe places with sole occupancy. Our events are all inclusive of three meals daily, including two candlelight dinners with wine, refreshments, accommodation. The only extra is the cost of transport, and often lifts can be arranged.

Our next weekend is a 'Winter Warmer' with circle dancing and Shiatsu massage and takes place at Unstone Grange, in North Derbyshire, with open log fires to toast your toes on. This runs from 21st-23rd February, followed by 'Sing in the Spring' a weekend alive with the sound of music ringing out across the Lincolnshire Wolds. This takes place from 21st-23rd February, followed by 'Write Out' a creative writing weekend from 11th-13th April, at Unstone Grange. All events are on a sliding scale of charges, starting at around £45 for the complete weekend. If you would like further information phone Richard on 0115 978 0124 for further details.

Established 1850 GINNS & GUTTERIDGE FUNERAL DIRECTORS & MONUMENTAL MASONS

- ◆ Rolls Royce Phantom Fleet.
- ◆ Horse Drawn Funerals.
- ◆ Pre Arranged Funerals.
- ◆ 24 hr. Compassionate Service.



For further Help & Advice contact:

Chris Sarson M.B.I.F.D.

St. Nicholas House, 51 Vaughan Way,
Leicester, LE1 4NR Tel: 0116 251 6117

75 Ashby Road, Loughborough. Tel: 01509 238912



NO JOB TOO SMALL!

**GAY FRIENDLY -
STRAIGHT SERVICE**

**01773
763328**

14 Lockton Avenue, Heanor,
Derbyshire DE75 7EQ
01773 763328

**RICHARD
SISSON
BUILDER**

mind & body

ACUPUNCTURE

Monica England
DipAc, MBACc

SHIATSU MASSAGE

Jane Everest

At Nottingham
Women's Centre

Tel: 0115 962 6621
HOME VISITS POSSIBLE

COUNSELLING & PSYCHOTHERAPY

EVE PARSONS

Psychotherapist in advanced
Gestalt training

The Healing Arts Centre,
Hockley, Nottingham

Tel: (0115) 958 0734

Liz Armstrong

**Person-Centred
Counsellor
For Women**

(in advanced training)

Tel: 0116 - 270 - 3913

ACUPUNCTURE

and

CHINESE HERBAL
MEDICINE

Simon Fielding
MBACc, MRCHM

Stonegate, Leicester
0116 270 1263

FOR SALE

Bestwood Village,
Notttingham, 3 bed end
town house, 2 reception.
fitted kitchen, sep. wc.
bathroom, solid fuel
central heating, patio
area to rear, lawn to
front, garage.

£38,500 o.n.o.

HOLISTIC MASSAGE AND POLARITY THERAPY

THERAPEUTIC BODYWORK
FOR HEALTH AND RELAXATION

BIANCA BOTERHOEK ITEC MTI
FULLY QUALIFIED AND
REGISTERED PRACTITIONER
TEL: 0115-969 1830

HELP with STRESS, HEALTH,
SMOKING and MORE...
HYPNOTHERAPY, & NEURO-
LINGUISTIC PROGRAMMING



BELINDA RICHARDS,
Dip. E.H.P., NLP BHR

Caring & Confidential
Tel: 01283 216141

Tracey & Vanessa

welcome you
to

THE MOUNT
HOTEL

30 Exchange
Street,
Blackpool

For gays and
lesbians

Now booking
for Easter

01253 25659

Holistic massage

by ITEC qualified Masseur
Secure, Comfortable, Relaxing,
For more details:

Ring Tim
(0115) 948 0975

NOTTINGHAM AREA

QUALIFIED MASSEUR
MATURE GUY
AVAILABLE FOR HOME VISITS

TEL: 0115 976 1859

Choices at Derby Friend

Choice was something that Adrian Piggott didn't have when he was coming out on the gay scene in Brighton not too long ago. He remembers. "I had decided I was gay and had geared myself up to go into this gay bar. Having got in there I expected to be treated with respect but the reality was something altogether different. All I really wanted from this older man was friendship but instead I was not able to be as assertive as he was, and ended up with a quick lay which is not what I wanted from him."

This experience set Adrian back almost six months. "I lost my self-confidence and trust", he

says.

So when Adrian came to Derby University several years ago he was determined that young people would have more choices than he had and set about becoming involved with the Lesbian, Gay and Bisexual Society there, which seemed to be a natural home for him.

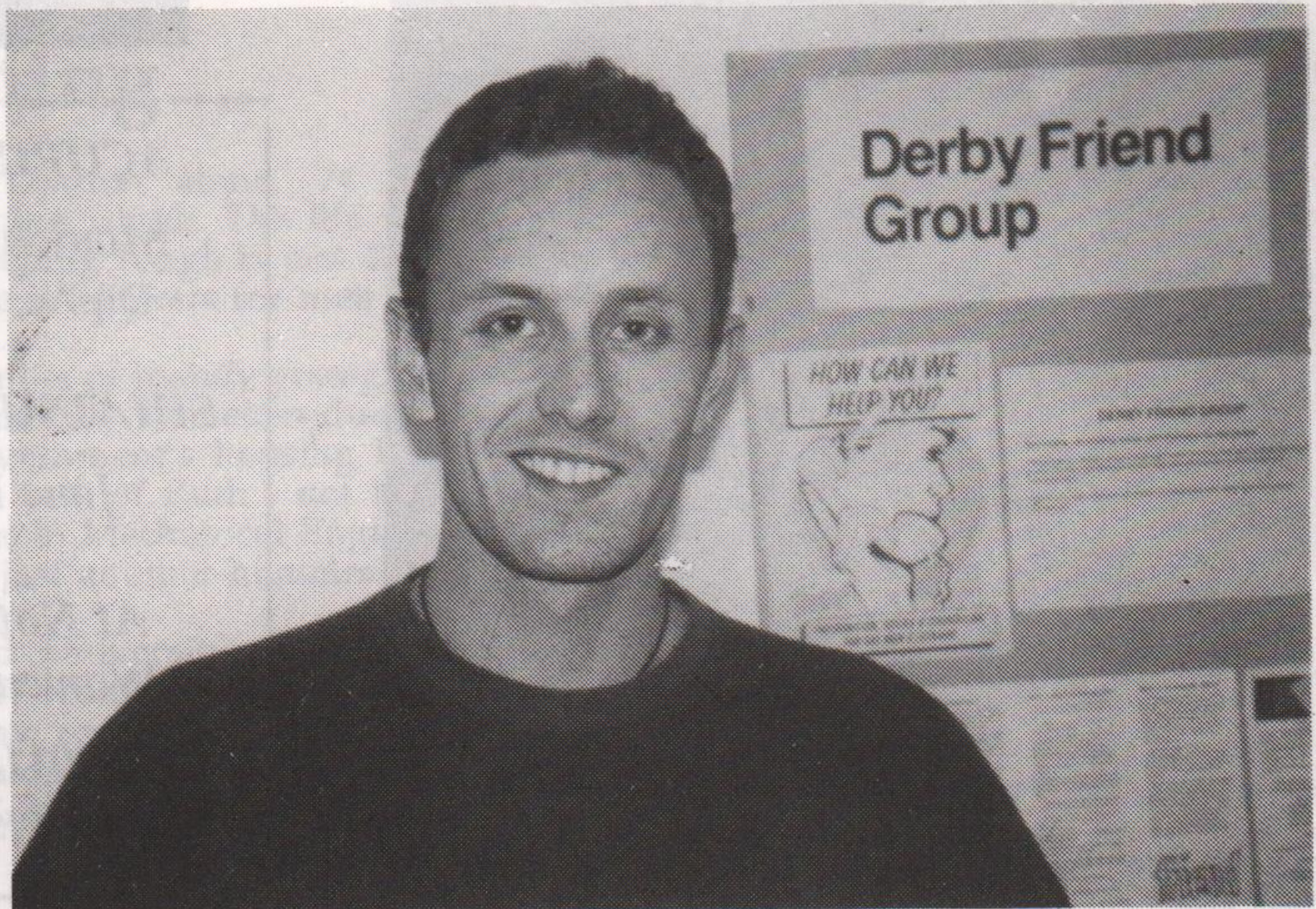
Adrian and Nadine Pittam, co-organisers of the group put a premium on being visible on campus. With over 15,000 students at a new university, they decided the time was right to flood the campus with publicity and 10,000 leaflets advertising the lgb society were distributed. "It was one way of

reducing student isolation, because like many universities Derby is sited on a number of campuses throughout the city. Though there wasn't a tidal wave response to their blitz, people gradually began coming to the meetings, and more importantly they were being very visible and learning about pride. Since then there have been a series of media interviews and a mock wedding on campus, plus exchange visits to other lgb groups in the region, building up the network of contacts.

"We want to encourage people to confront their sexuality and become empowered by it."

Adrian is the first to acknowledge that his

recent high-profile involvement with the group has done wonders for his own self-confidence. "I am a naturally reserved person and this has been character building for me as well. Being able to make a difference makes me feel good, too!"



"We have tended in the past to provide what facilities we think people needed who contacted Friend, but these days we are asking them what they want from us. We feel this is a step forward in making the organisation more relevant to its users in 1997," says John Hardy, Chairperson of Derby Friend.

Hands-on Training



We have always tried to develop an alternative to pubs and clubs. "You don't have to come to Friend simply because you may have a problem that needs solving, you can come for a game of cards, a coffee and meet friends here, and it doesn't cost you money, either," he adds.

'Choices', the group for under 18's was set up by Friend member, Mandy Allen, a Youth and Community Worker (pictured) who is currently working on a PhD on alcohol abuse and young people.

Mandy co-ordinates the training programme for Derby Friend and 'Choices'. Anyone wanting to become involved in Friend's work takes part in a training programme which includes basic counselling skills, laws and policies, and stuff around sexual education, and the basic principles of group work. Needless to say, the course provides a solid base for young people to do some hands-on community work, whilst getting regular support.

Mandy is keen to offer young people the chance to find their voices, particularly for those who are further marginalised by race or gender.

Another important aspect of Friend's work is The Sexual Health Project which is overseen by Melvyn (pictured centre, back row). This does a lot of work around condom drops reaching the city's gay men who are out and about. This is in addition to all the usual backup counselling and befriending work that the Project offers to people living with HIV/AIDS.

So for anyone who is interested in working with the wide range of people who contact Friend or working specifically with young people, there's a chance to do effective hands-on work, and get the necessary supervision and support whilst learning new skills.

Choices meets on Thursday early evenings, 5.15pm-7pm (for those under 18) and can be reached on 01332 349333.

If you are interested in becoming a volunteer offering befriending, support and advice to lesbians, gay and bisexual people, there are periodic training programmes during the year. Women volunteers are especially needed. You can ring Derby Friend on 01332 349333 or write to Derby Friend, PO Box 185, Derby DE1 2YN.



GAY TIMES POLL RESULTS

Gay Times poll of sexy people was topped by the face that made Athena millions, James Dean, followed by River Phoenix and in third place Brad Pitt, just beating off Keanu Reeves. In the female category Madonna, came top followed by Marilyn Monroe, Bette Davis and Judy Garland, no surprises there! Sexiest woman on TV place went to Inspector Jane Tennison, alias Helen Mirren, whilst Damon Albarn was voted sexiest pop star.

Yer what??

Nottingham City Council notice pinned up in the steam room, Victoria Leisure Centre:

"Due to repeated customer requests we would ask customers to refrain from exfoliating in the steam room."

SANDOLIN

Guest House
117 High Street
Blackpool FY1
2DW

SPECIAL OFFER

B + B Monday to
Friday £39
inclusive

Easter bookings
now available

£15 per person
for Easter,
otherwise £12.50

February & March £10
per night B + B

Telephone for
brochure to
Malcolm or
Rennie

01253 752908

BARRIE WARD & JULIAN GRIFFITHS

Solicitors

Over 20 years serving
the Gay & Lesbian
Communities
5 Clarendon Street
Nottingham
NG1 5HS

0115 941 2622

24 hour pager
01426 841614

Positive Therapy

Derbyshire Body Positive are on the lookout for Alternative therapists. If anyone is able to offer one of these services, like Acupuncture, Massage, Reflexology or Aromatherapy or any other recognised therapy, Wayne at Derbyshire BP would be interested in hearing from you. There are funds available to pay anyone interested. Ffl. ring Wayne Linskey on 01332 292129.

FOR SALE

Premier 5 Set
Drum kit,
Cymbals, Top Hat,
all with cases in
excellent condition
£600 ono.

Ring 01332
865773.

Music and Magic for International Women's Week

Loughborough Women's Bar presents
"Welcome to International Women's Week",
an evening of music and magic on Saturday
1st March, from 7.30pm to 11.15pm

The evening is compered by Magic Madge
with the Bangshees Drumming Band,
Christine Moon and supporting acts, and
there is a disco bar. The venue is St. Peter's
Community Centre, Storer Rd. Loughborough,
which is wheelchair accessible. £5/£4/£3 and
all women are welcome. Enquiries Tel 01509
213894/235338.

Hot...

MIDLANDS PREMIER TRAVEL SPECIALIST
Tel: 0116 233 7555
Mon-Fri 8-8.Sat - Sun 9-7 • 121 Kirby Road, Leicester LE3 6BE

Gran Canaria

FROM
£59
Based on 3 sharing / Accommodation only
Per week

Welcome abroad

TGTG T0256 • IATA
An agent of ATOL holder

MACEDON TRUST

Are you homeless?

Need somewhere to sort
out your life and make
positive changes for a
better future?

Noelle House is run by
Women for Women and
gives priority to Black
women, Lesbians,
Lesbian couples and
Women with HIV+
status.

We provide safe, secure
and non-threatening
accommodation,

so give us a
call on 0115 924 4812

Sundays
Cafe
Quench
GAY
Style Bar

in
association with

Cordially invite you to:

**AN
ENTERTAINMENT
SPECIAL**

*with the fabulous singer and impressionist
Kerry Wilson live at 8pm*

Jallans, Byard Lane, Nottingham

Sunday 16th February from 7pm

FREE ADMISSION

Information line: 973 1708

GAI
GAY & BISEXUAL MEN'S
HEALTH PROJECT

classifieds

HOW TO REPLY: Seal each reply in a separate envelope. Write the number of the box you are replying to in the top right hand corner of each envelope. Place them in a larger envelope. Enclose two loose first class stamps for each reply. Replies without stamps or with insufficient postage will *not be* forwarded. Address the outer envelope to Outright, stamp & post to: PO Box 4, West PDO, Nottingham NG7 2DJ

- Nottm. male 21, med. build gsoh seeks straight-acting guys 20-30 for friendship and fun times possible 1-2-1 ALAWP sorry no time wasters. Box 851.
- Anywhere - goodlooking slim hairy white guy 39, seeks black or Indian/pakistani younger guy for relationship. Own place/car, many interests gsoh, photo helps. Box 852.
- You Black/Asian guy, 25040 eager to experience the pleasure of my mature, educated, insatiable tongue. Box 853.
- Lincs/Notts, youthful caring uncle wants to bestow loving care on nephew 30's, straight looking, good butt, hairy, w/e, black a bonus. photo, phone. Box 854.
- Notts. Retired professional seeks 'nephew' who enjoys company of older person. Asians/black especially welcome, ALAWP. Box 855.
- Uncle seeks nephew 25-40, slim, straight acting non-smoking black/white/Asian for friendship 1-2-1 photo phone appreciated. Box 856.
- Derby/Midlands 40, 5' 7", average looks, experienced weekend house servant/personal attendant seeks uncompromisingly dominant, slimish, stable guy, under 50 possible 1-2-1 ALAWP. Box 857.
- Gentleman retired offers massage for relaxation, home visits, no fees, Notts area. Box 858.
- Cute Ghanaian, 24 years old passive, clean shaven, very honest, sensitive and romantic, seeks reliable Englishman for real and serious relationship. Age unimportant, no time wasters. visiting UK soon. Send 80p. for reply. Box 859.
- Safe fun with other couples or guys around Leics/Notts. We are 30 and 50 something, all ages welcome ALA. Box 860.
- Leicester male 34, interests include swimming, cycling, yoga, poetry etc. seeks soul mate to share experiences with, age/race unimportant gsoh essential. Box 861.
- Derby, 60 year old retired professional seeks professional guy 25-35, evenings out, or by the fireside. photo welcome (and returned) but not essential. Box 862.
- Mansfield/Notts, male 36, slim goodlooking, non-smoker, gsoh, sensitive, seeks 30-45 year old for friendship and hopefully 1-2-1 discretion assured ALAWP. Box 863.
- Leicester guy 39, average build, deep caring nature seeks guy 40-50 who is loving caring understanding of me for 1-2-1 photo and phone appreciated. Box 864.
- Leicester black guy very happy with sexuality seeks guy 25-45 for love, honesty, truth, but above all, a soul mate for 1-2-1 ALAWP. Box 865.
- Derby, avuncular schoolmaster offers to carefully unravel the discipline requirements of local naughty nephews 198-28. Maybe older if really deserving. uniforms, shorts, pyjamas. ALA. Box 866.
- Sheffield, Bi-guy 30, slim good looking, straight-acting, seeks similar aged 20-35, for friendship maybe more. interests include the cinema, squash, gym, eating in/out. Box 867.
- North Derbys./Notts, in my 30's, easy-going, seeking partner 18-40, with very hairy body. looks don't matter, pleasant personality does. Box

- 868.
- Nottingham, Slim, long hair, 24, into broccoli and roll-ups seeks unaffected chap for pints and palship. Box 869.
- Leicester guy, 23 tall good looking very horny, seeks stocky guys for fun and maybe more. Box 870.
- Nottingham black, 37, medium build, interests music, dancing, cinema, eating out/in, seeks 1-2-1 for friendship/fun. Photo appreciated. Box 871.
- Nottingham guy, 30 told goodlooking into cinema, music, eating out seeks guys 18-30, for fun and friendship ALAWP. Box 872.
- Leics. guy 38, seeks younger guy 24-30 for fun/1-2-1. into music dancing, cinema and lots more, honest, sincere, loving, genuine, write soon ALA. Box 873.
- Nottingham, 52 straight acting seeks sincere non-scene caring guy for affection, cuddles, maybe more, interests include walking, theatre, cinema and going for a pint. Box 874.

I'm 34, 5' 8", slim and balding, seeks dominant active guy, 20-40, strong but cuddly preferred. let me make you happy. 1-2-1 or just mates, photo/phone no. if possible. Also new mates for going out Box 875.

- Derby 29 non-scene, bright, outgoing male, seeks similar for fun times and to share the simple special things in life with. Box 876
- Chesterfield, 38, goodlooking, medium build, seeks similar for safe fun. Photo appreciated. Phone no for quick reply. Box 877.
- Nottingham, city centre, John, 48 seeks clean shaven guys for uncomplicated broad minded fun times. Experienced or not welcome. Weekday evenings are best. Box 878.
- Leicester male, 23 Asian, straight acting, vgsch, seeks a male, 18-25 for friendship. Get writing! Box 879.
- Portsmouth, Bisexual deaf guy, 42 seeks any bi/gay guys any ages view friendship, can travel, no accommodation, write soon with photo. Box 880.
- Video collection for sale. Please write for details. Don't delay! Box 882.
- Sheffield, 6ft. slim, Am I the only gay bboy in Rise, Gatecrasher? seeks funny intelligent hedonists for

Leicester, 25 slim 6' 2" professional, vgsch, caring, genuine, prefers straight clubs into cars, clothes, dance music, seeks similar, 21-35 for friendship poss. 1-2-1 ALAWP. Box 881.

- supercharged clubbing and long horny comedowns ALAWP Box 883.
- Nottingham, Gay male, 45, I am

med. build 6ft. tall short dark hair blue eyes, seeks male from Notts. area 18-45 for possible friendship/relationship. No transport. 60''-70's music, 'Carry On' and '007' Films, Box 884.

- Leics/Derby, versatile guy, 40, good looks w/e, horny, seeks white/Asian/Black guys for fun times, tel No ALA. Box 885.
- Nottm/Derby Hi, I'm 40 and seeking younger guy any colour/ nationality for no strings fun and friendship. varied interests, photo assures reply ALAWP. Box 886.
- Could all those young chickens start writing, 18-25, only Easter is around the corner! Me 25, looking for a 1-2-1 friendship/relationship, like pets/music, can accommodate. Box 887.

Nottm/Derby Hi, I'm seeking a houseboy, 18-30, for general weekend duties. Person must be discreet, practical, domesticated, write with recent photo for details. Box 888.

- Leicester Asian, 30 5' 8", hairy chest, muscular build seeks romantic and caring white guy under 35 for probable relationship. passive and smooth preferred. ALAWP. Box 889.
- Burton/Derby, 50 mile radius, retired gay couple seeks similar or single person for home visits varied interests any age above 18. ALA. Box 890.
- Notts. 28 blond, green eyed with gsoh, seeks 25-40 for mad fun times and cuddles on cold nights, view to finding 1-2-1. Box 891.
- Nottingham, disabled black gay male, 30 seeks white gay/bi guys, 18-30 for genuine friendship and laughs, write soon ALA. Box 892.
- Genuine Ghanaian male, cut, fresh skin 21, slim seeks serious British male partner, meet soon for romantic pleasure. (Enclose 80p. stamp for forwarding). Box 893.
- Ghanaian, handsome, strong, very good sense of humour, tall, romantic and sexy. interests in sports, exchange travelling and lots more. (Enclose 80p. stamp for forwarding). Box 894.
- Honey cute Ghanaian guy 22, smooth body, with real open heart, sensitive and very romantic will be visiting UK in March 97, seeks English for 1-2-1 relationship. Genuine replies only. (Enclose 80p. stamp for forwarding) Box 895.

women's personal

- Lincs: female 46, seeks lesbian friends in area, tall, long hair, into lipstick, lace femininity, art, history, antiques, car boots, cooking, entertaining. Box 359.
- North Notts. 30 gsoh, only female in gang of gay men seeks genuine females for friendship so I'm not outnumbered! Any age. ALA. Box 360.
- Nottingham area, Three friendly bridge playing lesbians seek others to learn/play. Box 361.
- Disillusioned dyke of Derby 30, seeks educated, articulate female. Where do they hang out?! humorous-

East Midlands, honest, sportive, monogamous lesbian, seeks similar feminine kindred spirit, dark haired voluptuous soul-mate not looking to play with someone's emotions, fate awaits us. Box 363.

helplines

CHESTERFIELD AREA
LESBIAN LINE, Tue 7.30-9.30pm.
01246-559431.

CHESTERFIELD HAND, Thurs
1-3pm, Sun 7-9pm. 01246-550550

COVENTRY FRIEND, Mon,
Wed, Fri, 7.30-9.30pm 01203-714199

COVENTRY LESBIAN LINE
Wed, 7.30-9.30pm. 01203-717166

COVENTRY MESMEN 01203
224090.

DERBY BODY POSITIVE, Tue
10.30am-1.30pm, Thur 11.30am-4pm,
01332-292129.

DERBY FRIEND, Wed, 7-10pm.
01332-349333.

DERBY LESBIAN LINE, Wed,
7-9pm. 01332-41411.

DERBY AIDSLINE, Mon &
Thur, 7-9pm, & Thur, 2-4pm. 0800
622738.

GRIMSBY/ SCUNTHORPE
AIDSLINE, 01724 276660

GRIMSBY & DISTRICT GAY
HELPLINE, Tue & Thur, 7-9pm.
01472-251818.

LEICESTER LESBIAN/
GAYLINE, Mon-Fri, 7.30-10.30pm.
0116-255-0667.

LEICESTERSHIRE AIDS
SUPPORT SERVICES, Mon-Fri,
9.30am-5pm. 0116-255-9995.

LESBIAN & GAY CHRISTIAN
HELPLINE, Wed & Sun 7-10pm,
0171-739-8134.

LINCOLNSHIRE AIDS
VOLUNTARY GROUP, Mon, Wed,
Fri, 9am-9pm, & Tues, Thur, 9am-
5.30pm. 01522-513999

LINCS LESBIAN & GAY
SWITCHBOARD, Tue (Lesbian Line),
Thur & Sun, 7-10pm. 01522-535553.

MANSFIELD SEXUAL
HEALTH & AIDS HELPLINE, 01623
642814

MANSFIELD/ASHFIELD
POSITIVE SUPPORT, 01623-26254

NATIONAL BISEXUAL
PHONELINE, Tue & Wed, 7.30-9.30
pm. 0181-569-7500

NORTH STAFFS LESBIAN &
GAY SWITCHBOARD, Mon, Wed,
Fri 8-10pm, Sun 1-3pm, 01782-266998

NORTHANTS GAYLINE, Tue
6.30-9.30pm, 01604-35975

NORTHANTS LESBIAN LINE,
Wed 7-9.30pm 01604-250887

NOTTINGHAM LESBIAN &
GAY SWITCHBOARD, Mon-Fri,
7-10pm. 0115-941-1454

NOTTINGHAM LESBIAN
LINE, Mon & Wed, 7-9pm. 0115-941-
0652

NOTTINGHAM FRIEND, Tue
7.30-9.30pm (women), Thur, 7-9.30
pm (les/gay/bi), 0115-947-4717

NOTTINGHAM UNIVERSITY
LESBIAN & GAYLINE, termtime
Mon, 8-10pm. 0115-951-4999, internal
4999

PETERBOROUGH FRIEND,
Tue & Thur, 7.30-9.30pm, 01733
61499. Answerphone other times.

SCUNTHORPE GAY MEN &
WOMEN, Wed & Fri, 7-9pm, 01724
271661

S YORKS CONNECTIONS,
Thurs 7-10pm & Sun 3-8pm, 0122
6730703

SHEFFIELD AIDS LINE, Mon-
Thur, 7-10pm, 0800-844334

SHEFFIELD GAYPHONE, Mon-
Wed, 7.30-9.30pm, 0114-258-8199

WELLINGBORO' GAYLINE
Thur, 6.30-9.30pm, 01933-223591

sand fun-loving, variety of interests, plethora of stories! Box 362.

- Notts. feminine 33, seeks similar for fun, friendship, and anything else that develops. Enjoys sharing a bottle of wine, cycling, walking, chocolate, caffreys and femininity. Box 364.

- Attractive lesbian, 40, professional, independent, socially aware, sensitive, caring. seeks like minded stable woman for mutually supportive relationship. long letter assures reply.

Box 365.

- Lonely Notts. professional lesbian, 25, seeks other lesbians for friendship enjoys music, theatre, books, cinema, art new to gay scene. ALA. Box 366.

- Derby gay vgsoh, looking for someone who's honest and caring, looks/age unimportant. I'm 51 years old, dog lover, car driver, non-smoker, mend my broken heart, photo please. Box 367.

- Female drummer seeks other women musicians for practice sessions, any standard/style welcome. Box 368.

- Leics/Coventry, Friendly independent lesbian, early 30's, outdoor type, enjoys cinema, eating out, weekends away, honest/sincere gsoh, seeks similar, 28-45. Box 369.

- Leics/Hinckley, gay female, 46, cuddly, smoker, lonely, enjoys nights out/in, gsoh, seeks similar for friendship or relationship. Box 370.

- Derby South, Attractive gay professional woman, slim, femme-ish, non-scene, 42, loves conversation, dinner parties and the nicer things in life. Wishes to meet similar. Box 371.

- Female Drummer seeks other women musicians for practice sessions, any standard/style welcome. Box 372.

- Notts/Derbyshire required 18-30, me 21 I'm cute love nights in and out into pets, music, many other hobbies, can accommodate - fresh life 1997 1-2-1 relationship. ALAWP. Box 373.

- Leicester, professional outgoing dyke gsoh likes talking, walking, going out staying in, intimacy, seeks similar for conversation, fun jaunts and beers, maybe more. Box 374.

- Display :Female Personal assistant required by wheelchair user, 24 hour shift: £60 full clean driving licence essential. Start Date: February contact Sharon (0115) 949 0821. Box 375.

bisexual

- Leicester Bi male late 50's very gentle artistic, likes walking music and affection seeks understanding bi. female for open friendship, bay be more, genuine replies please. Box 5.

mixed personal

- Do you want to be a Dad? single lesbian looking for gay sperm donors to co-parent please write with information about yourself, photo appreciated. Box 102.

- Crazy m/l TS seeks male partner, n/s, photo if possible, interests cycling, music, cooking, CB radio, must be understanding and broad minded with gsoh. Box 103.

- Swinging married couple, happy, healthy, horny, in love M30, tall, dark and handsome, F30 slim, attractive seek similar couples M/F for pubs, serious clubbing, food and fun ALAWP can travel/accommodate. Box Box 104

messages

- Kairen, happy Valentine's! my sweet little cheroke! I'll be dreaming of you....always, Lucie xxx.

- Mark at Streetlife: Wishing you a happy birthday for 27th February, Hope you have great time, with love as always your admirer.

- Nick - February 9th - Sending you all my love. Why? "Because you're gorgeous; I'd do anything for you". Go ahead - name it, Birthday Boy!!! Chiddy xxx.

- Ruth their curses will come back and feed on their own hearts. Every agony they've given will return. I'll

ways love you, Your Valentine.

To Clive. My first and only Valentine. I want to hold you for ever. Lots and lots of love Gareth. xxx

accomodation

- Nottingham, Forest Fields: Lesbian houseshare. Spacious room uncomfortable Victorian home with sunny garden. Woman only space. Veggie, non-smoker. £35 pw exc. 0115 962 0305.

- Leicester: large room available in gay household. Must be tidy. All mod cons. near University, off Queens Road, must be seen £200 pcm, phone 0116 270 6327.

- Sheffield, non-smoker, room in comfortable shared house with lesbian. Gas ch, mod. cons. £130 pcm includes all bills except phone). Ring Cath 0114 244 9940.

- Sheffield, Hillsborough, gay Houseshare, one room, single, furnished, clean. Meals, bills, inclusive, working £35, students £33, B & B, £12 daily. Phone: 0114 220 6638.

wannabees wanted

Would-be journos, writers, photographers, illustrators, etc

outright

welcomes contibutions
- contributors from outside Notts especially welcome.

No money - just glory
(hollow laughter) SO
SEND US YOUR STUFF!!

CAMPIONS SOLICITORS

SINGLE WILL £30.00

DOUBLE WILL £40.00

(VAT to be added on both)

45-47 Mansfield Road

NOTTINGHAM

NG1 3FH

TEL: 947 6373

Free client parking

Near to Victoria Centre

BEAT THE RUSH! 12 ISSUES OF OUTRIGHT!

DELIVERED FOR ONLY £5.00
in plain sealed envelope
SEND PO/CHEQUE TO
PO BOX 4
WEST PDO
NOTTINGHAM, NG7 2DJ

BATHLEY GUEST HOUSE

EXCLUSIVELY GAY

Tea/coffee making facilities in all rooms. No restrictions.

Own key, plus FREE

admission into

Admiral Duncan.

101 Bathley Street,
Trent Bridge, Nottingham

0115 986 2463



The Plough Hotel

Cow Brow, Lupton, Cumbria LA6 1PJ
Tel: 015395-67227 Fax: 015395-67848

Gateway to the Lakes

14 en-suite bedrooms

Licensed Bar

Bar lunches, suppers

À la carte restaurant

2 minutes junction 36 on M6

FREE AND CONFIDENTIAL

HIV TESTING

The Health Shop

Broad Street

Nottingham

01156 947 5414

ALSO FREE CONDOMS,
LUBE AND
HEP. B VACCINATION



HOW TO PLACE AN AD:

Complete the form below. Please write clearly! Keep ads short & sweet: max 24 words. We reserve the right to refuse or amend ads. One free ad per issue, see copy date details on page 2. Enhance your ad in display for £4. Commercial advertisers write or phone for rates.

outright! classified ads

Complete & return to PO Box 4, West PDO, Nottingham NG7 2DJ

cut here

Please tick classified category: Mens Womens Mixed
Accomm Messages Display (enclose £4 cheque/PO)

Name.....

Address.....

Postcode.....

Mardi Gras Rip Off!!



Manchester's Mayor Sheila Smith
launching Mardi Gras '94
photo Gay Times

The most serious shortfall in funds comes from the Freedom Gala which took place at Manchester's G-Mex Arena and which attracted over 12,000 to its all night rave, which was organised by promoters Peter Dalton and Caroline Ainscott, Directors of Manto Paradise Group. (The promoters claim that 4,000 tickets were forgeries though there is no evidence so far to

support this but even if this figure is to be believed that should produce a sum in excess of £40,000 due from the promoters to the Village Charity, almost double the amount they claimed to owe).

The all night rave promised £5 of the £25 ticket would be donated to the Village Charity but to date nothing has been passed on to them. Estimates of door money outstanding from Freedom Gala are £21,320 which would only account for ticket sales of 4000. Although roughly £115,000 has been paid over to the Village Charity from various organisations, a further £50,000 not paid in from a range of venues.

Outright spoke to Gerard Gudgeon from the Village Charity who said a full statement would be issued following the meeting on the 29th January. We also tried to reach one of the promoters of the Freedom Gala, Peter Dalton but he didn't return our call. We will keep you posted.

Disappearing Act - cont.

They spent all their time behind the bar and didn't seem to want to work to make the venue a success. There was plenty of room at the pub for gays and straights.

Not much is known about the trio except that Lyn Gowdy is believed to have worked at a Golf Club in the Cambridge area before teaming up with the other two women to run the Greyhound.

So if you have any information that may help Lincolnshire Police would like to hear from you at Bourne police station, 01778 394892, PC Bob Clark, crime reference BC/97/63. Warrants have been issued for their arrest as we go to press.

Stop Press....Stop Press....

Scott Capurro will not be performing as part of the Pink Comedy Night at the Leicester 'Y' Theatre on the 14th February. For information about his replacement call the 'Y' Theatre Box office on 0116 255 6507.

Admiral Duncan

Lower Parliament St, Nottingham, Tel: 0115 950 2727

Michael Yeomans Night

MEMORY ZONE

presented by Michael Yeomans

now on the 3rd Monday of each month

Your next 70's and 80's Heaven Night is

Monday 17th February, 10pm to 2am

Friday 14th February

VALENTINE'S NIGHT BALL

Watch out for posters

Members and guests only
membership is free

You'll be laughing!

From Fri 7 to Sun 16 Feb

Leicester Comedy Festival comes to Phoenix Arts

Humorous Dance

Hilarious Stand-up

Funny Films

Comic Theatre

Celebrity Interviews

Lunch-time Discussions

Laurel & Hardy and
Buster Keaton movies on the
big screen with Live Music

PHOENIX

A R T S

Phoenix Arts is a registered charity • Photo: Gulp Fiction

For further details and a free season brochure call the Box Office on

0 1 1 6 2 5 5 4 8 5 4

Phoenix Arts • 11 Newarke Street, Leicester LE1 5SS