



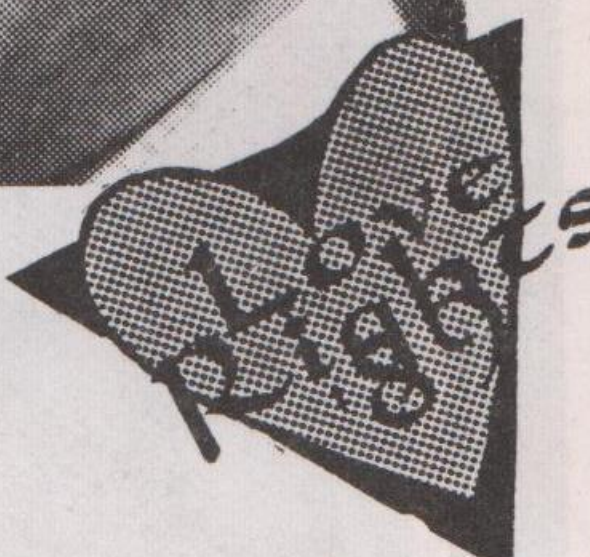
PUBLISHED BY METRO GAY, BOX 34,
WEST P.D.O. NOTTINGHAM, NG7 2DL

Rabbi Lionel Blue, radio personality and Britain's most famous rabbi, publicly came out as gay in a surprisingly frank interview with the Independent newspaper. The Rabbi described his early suicidal thoughts about being gay, the restriction on his sexuality by Judaism and his growing desire to be open about his homosexuality.

Every Monday morning the 2 million listeners to BBC Radio's prestigious current affairs programme, Today, hear his witty and provoking religious item 'Thought for the Day'. Rabbi Blue said his decision to come out arose from a desire to be 'honest' with the growing (contd, back page)



Gay Times



STAND UP FOR YOUR LOVE RITES!

NOTTINGHAM COACH SEATS NOW

Carol Leeming, Leicester-based cabaret artist and Pride '89 performer is one of a number of performers heading for Manchester on Saturday 23rd September to take part in the Love Rites concert in the Free Trade Hall. And for Nottingham punters there's a coach laid on door-to-door, leaving Manchester at 11.30pm. The evening concert is set to be the culmination of a day of fun with Parker & Klein, Jimi

Somerville, the Deltones, Ian Shaw & Helen Terry, Carol Leeming and the Blow Monkeys. Other artists including Marc Almond have yet to confirm. The programme for the Love Rights '89 Festival includes a march through the City Centre to Albert Square for an afternoon rally, scene of the highly successful anti-Clause 28 rally last year when over 25,000 people packed the Square.

The theme for the festival is a celebration of Lesbian and Gay sexuality, which will be short on speeches and strong on fun. Parents of Gays & a lesbian/gay disabilities group will benefit from any profits of the day. Carol spoke of the importance of having a good time and learning how to enjoy ourselves again and yet still being visible. "We managed to turn Clause 28 to our advantage now its time to show we're definitely not going underground. It's important to support this one, more so because it's out of London", she added.

Meanwhile, Manchester's many gay pubs are preparing for what they anticipate will be the best day's trade of the year.

Tickets for the concert are available from Unit 65, New Mount St, Manchester, M44DE, Prices, £7.00 (waged) £3.50 (unwaged).

The Nottingham coach leaves Maid Marian Way, 9am, £4.50 (waged) £3.50 (unwaged). The coach leaves Manchester at 11.30pm. TICKETS NOW ON SALE AT MUSHROOM BOOKSHOP. ONE COACH ONLY.



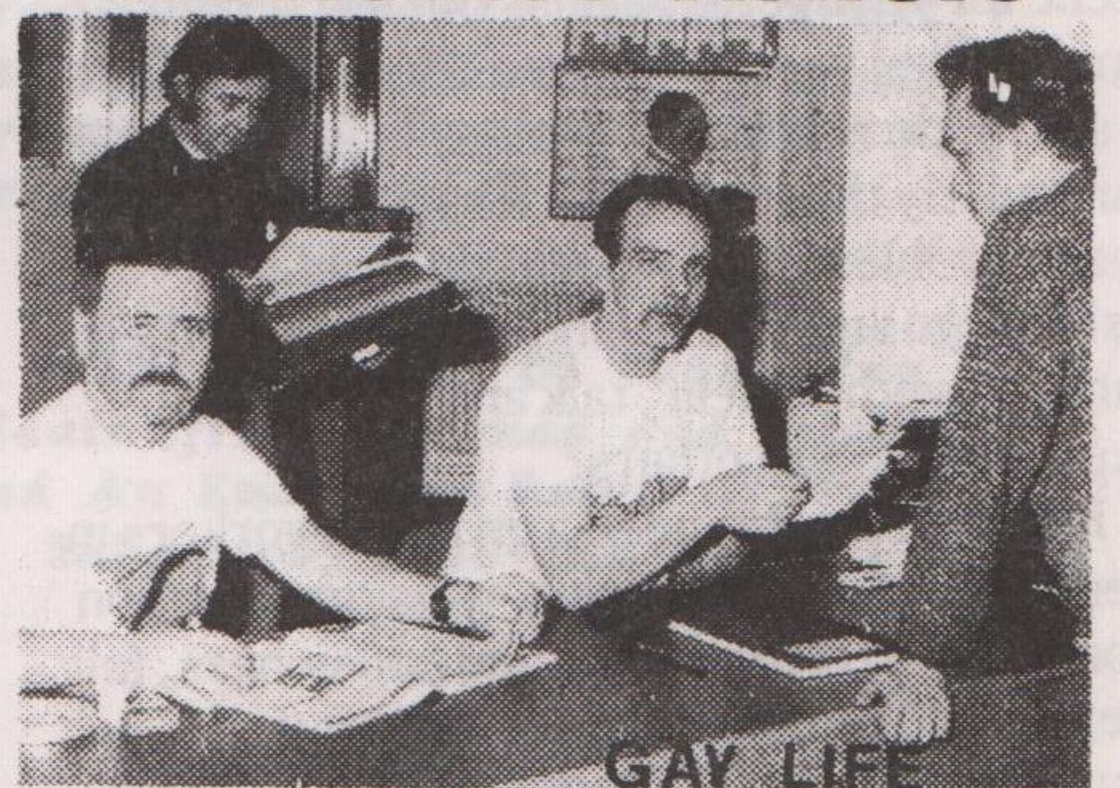
WE REMEMBER THEM



Graham Nicholas & Lisa Power of the International Lesbian/Gay Assn, wreath laying at Mauthausen Concentration Camp Memorial on 50th anniversary of World War II. Right is 15 year-old Anne Frank, whose poignant diary and family album were recovered from their hiding place after the family had been seized by the Nazis.

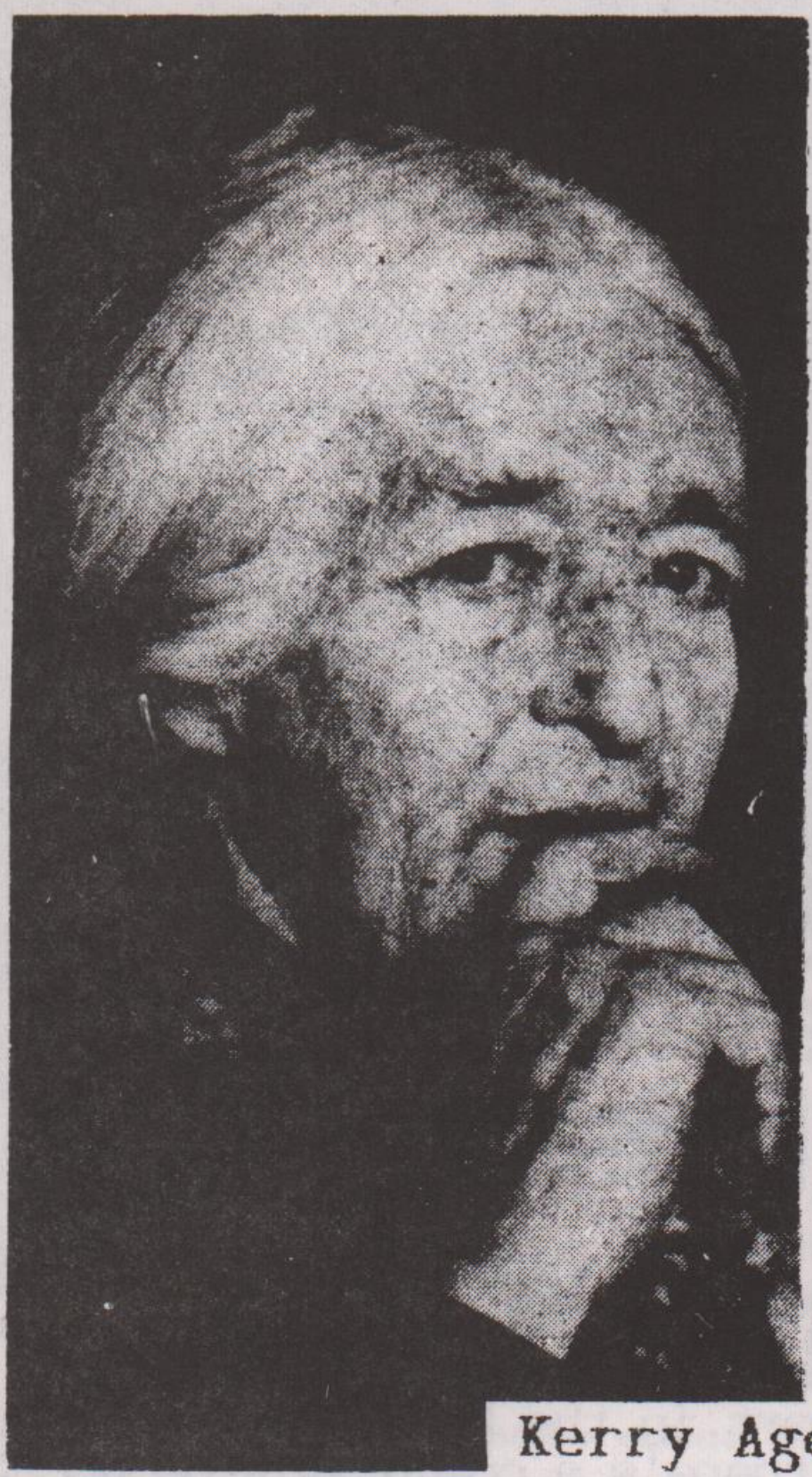


Manchester Centre welcomes visitors



GAY LIFE

The new Manchester Gay Centre in Sidney Street, in the heart of the gay village is very popular as a daytime meeting place. The centre includes a coffee & snack bar and is open during Love Rites '89.



OLD LESBIANS: OUT AND PROUD

Sheila Webb reports on lesbian workers in Pensioners Link who formed a group to counter the heterosexism they and the people they work with experience

Kerry Ager: "This estate is the only place I haven't shown out."

The one place you would expect to be able to be yourself and relax is in your own home. Yet for Kerry Ager and thousands of other older lesbians, letting her home help continue to assume she is heterosexual means Kerry can avoid hostility.

Not that Kerry lets this get her down. Despite having osteo-arthritis causing severe pain in her legs and limiting her mobility, Kerry is an active member of a north London based group calling themselves Proud Old Lesbians. Another POL group is planned for south London. She is also on the committee of Camden Lesbian Group and a member of Gemma, an organisation for disabled and able-bodied lesbians. Kerry also finds time for voluntary work at London Lighthouse.

"By having a group for older women it's encouraged them to feel there is something for them, that they can join in," said Kerry.

Many older lesbians have kept quiet about their sexuality all their lives, perhaps remaining in a long-term relationship but not part of a social network. The slightly less hostile climate of the '70s and early '80s, in cities at least, saw the growth of a lively social scene for younger lesbians. But discos and smoke-filled bars, often up inaccessible flights of stairs, do not appeal to many older women, particularly those who are less mobile or have health problems. So where could older lesbians go and be out, show affection to their partners without fear, talk and share experiences with others?

Recognising this need a group of workers in Pensioners Link, a London-wide organisation working with older people and pensioners, felt they should be doing something about it. Pensioners Link's philosophy is to work with pensioners in as equal a way as possible. The emphasis is on enabling pensioners to run their own groups and determine their own needs, with the aim of groups eventually being self-supporting.

Lesbian workers in Pensioners Link formed themselves into a group, one of their aims being to counter heterosexism towards them as workers, and challenge heterosexism to and by pensioners with whom the organisation works. Through outreach work they were able to help set up Proud Old Lesbians.

In our ageist society, with the emphasis on youth and media-defined standards of "attractive" and "sexy", older people find there is a common belief that they have no sexuality, and when they do, many younger people see it as disgusting. Denise Fowler, a Pensioners Link worker in the south London borough of Lewisham, spoke of a time when she worked in a residential home for elderly people. "There were rooms for married couples but little regard was paid to privacy. There was an assumption that you couldn't be disturbing anything if you walked into a couple's room." For some of her colleagues, accepting homosexuality was difficult enough if the person was young. If they were old, there was deliberate denial, even revulsion.

Two women residents who loved and cared for one another were deliberately kept apart by staff. They were not allowed to share a room even though this was their wish, and they were deliberately placed apart in the day room, unable to move nearer because of their disabilities. Comments in the report book accused one of the women of "interfering" with the other. They had wanted to hold hands.

For many older lesbians, going into a residential home or sheltered housing is their worst fear. How can they stay with their lover if the powers-that-be will not recognise the relationship? Who in authority will support them if they face hostility from other residents? Will able-bodied workers abuse their power and refuse to help women with disabilities go where they want to? Lesbians fear the nightmare of having to hide their

sexuality in order to get the services they need.

Discussions on housing have been prominent among Proud Old Lesbians, who held a special event to talk about their problems. Kerry feels she cannot come out to her neighbours. "I've lived on this estate for six years and it's the only place I haven't shown out, because I know I would not be accepted. You're either white and straight, or you're 'them blacks' or 'them pervs'."

Prime target

Perhaps it would be better if older lesbians could live in the relative security of an older lesbian housing co-op. At least then they could talk about their lover if they wish as heterosexual neighbours do. "But then there is the fear of being in a ghetto," said Kerry. What a prime target they would make then. "What older lesbians want, like everyone else, is a choice about housing," said Denise.

Most of the discussion is hypothetical because local authorities and most housing associations give low priority to single women or women as couples. And there is nothing for those lesbians who have been married and brought up a family and feel the only way they can be themselves is to walk away from the family home and leave it all behind. For these women, living temporarily with friends or finding a bed-sit is their only choice.

Kerry would like to see more housing designed for people with disabilities who want to live with a partner, for example housing schemes with double bedrooms or two-bedroomed flats.

Kerry is a member of the lesbian and gay working party of the National Federation of Housing Associations. This group aims to bring awareness of lesbian and gay needs to housing associations throughout Britain. "As far as they know the NFHA has no lesbian or gay workers to help get this started," said Kerry, probably because they have not felt

they could come out.

Beverley Hockley, another member of the Pensioners Link lesbian workers group, has approached a local housing association to discuss the needs of lesbians and met with a favourable response. The special needs officer admitted there were many issues around housing lesbians he had not considered before, although he was aware of harassment. The housing and Pensioners Link workers and older lesbians are having further talks. "If they know the local authority or housing association will recognise them as lesbians, that they won't face homophobia at the reception desk, then lesbians may begin to have the confidence to approach them," said Beverley.

Proud Old Lesbians is mainly a social group. A place where older lesbians can talk and decide their own priorities. Kerry hopes the support of the Pensioners Link workers, who reach thousands of pensioners across London, will encourage lesbians to come out and join them. In Lewisham where Denise works, the *Pink Paper*, a newspaper for lesbians and gay men, is left lying about next to the *Pensioners Gazette*, and all the pensioners have become familiar with its existence. It's a small step to encouraging discussion and awareness.

With homosexuals a minority of the population, scattered and invisible, isolation from other lesbians, particularly older lesbians, is acute. This is probably a problem if a lesbian's partner dies and after years of love and companionship she is alone. The Proud Old Lesbian group can at least offer a social life where members can talk about their lives and experiences.

Isolation is exacerbated by poor transport for people with mobility problems. For POL members, travelling half way across London to meet is a constant problem.

Coming out in older life is not easy, particularly if a woman has a family. Women fear they may be rejected by their grown-up children or their grandchildren will be kept from them. Some are able to work through it with their families, others are left with no support. There is little a woman can do if her homophobic son-in-law refuses to let her near his children.

With homosexuals a minority of the population, scattered and invisible, isolation from other lesbians, particularly older lesbians, is acute

"I have known many older lesbians who were afraid to come out because of their family," said Kerry. "They are afraid their children will think they are disgusting." And coming out after a life-time of hiding one's sexuality takes great courage. Lesbians, just like any other oppressed group, can internalise oppression.

All the while social workers, home helps and so on at best assume clients are heterosexual and at worst make homophobic comments, few lesbians are going to feel they can come out to them. "Every aspect of social,

leisure and health services needs to be looked into," said Denise. A lesbian couple may feel they have to pretend they are something they are not, even when visited by professionals in their own home. "Imagine a married couple having to pretend they are not married in order to get their home cleaned without trouble." Unless workers are aware, said Beverley, lesbians are not getting a proper service. An older lesbian may feel she cannot discuss properly her housing needs with a social worker, if she cannot acknowledge her sexuality. "Thank goodness, though, added Kerry, "there are now many more out lesbian social workers."

Not being able to be who you are is all part of the harassment of lesbians. Harassment does not just take the form of foul phone calls to Lesbian Line. Fear of coming out, fear of harassment if you do, is part of the "constant psychological oppression," said Beverley.

When Kerry's partner was dying of cancer they planned at first to say they were sisters so that Kerry could visit every day. When death was close, Kerry told the doctor she was Rickie's lover and was able to stay with her night and day. The staff might not have been so sympathetic elsewhere, and if Rickie's daughter had been hostile there would have been nothing Kerry could do. In law, only next of kin have a right to be informed. Kerry's lover died in her arms: how many homosexual lovers are kept apart while dying, or barred from the funeral by a hostile family?

Section 28 of last year's Local Government Act hangs over all activities with lesbians and gay men. Although dealing with education, it has set a tone where local authorities feel they have to play down anything they do on homosexuality. "I'd like to see how the law can claim we are promoting homosexuality with women who have been lesbians all their lives," said Denise.

Despite Section 28 the lesbian workers group has managed to secure £3,000 to fund the work with older lesbians in the coming year. They want to repeat events like their successful older lesbian celebration held in June last year, an event which sparked off POL. About 40 women, aged from 50 to 81, came along to celebrate, discuss and socialise with other lesbians. Kerry was one, and she thoroughly enjoyed herself at what is probably up to now a unique event in Britain.

"It was a great day," said Kerry. "Some women came from outside London, travelling all the way from Cardiff and Southend."

Since then the mailing list has grown and the group has had outings, social events and the discussion days on housing and health.

Kerry plans to set up an older lesbian phone line. "Just as for younger women those over 50 can be in a terrible state if their lover walks out on them," said Kerry, "and they want to talk about it to other lesbians."

Resources

Kerry, other POL members and the Pensioner Link workers are conscious that there are many more women to reach, and that they are only able to set up events in London. It was lack of resources which led the workers to confine themselves to work with lesbians, rather than include gay men, and the organisation's remit covers only ten London boroughs and people over 50.

It's early days for Proud Old Lesbians. The group was formed at a time of increasing hostility to homosexuals and a retreat by some local authorities from their commitment to equal opportunities. Nevertheless, the women themselves, supported by workers like Beverley and Denise, are at least able to highlight the needs of older lesbians and fight for the services they need. The women involved are aware that unless they do it themselves, no one is going to do it for them.

METRO GAY wishes to thank "Social Work Today" for permission to reprint this article.

THE NEW COSSACK

NEWLY REFURBISHED
IN
FAB ART DECO

FREE ENTERTAINMENTS

VIDEO SCREENS & 2 DJs
FOOD LUNCHTIMES & EVENINGS

FRONT DOORS CLOSE 10.30 BACK DOORS OPEN TILL 11.00

45 HOWARD STREET SHEFFIELD

OPPOSITE RAILWAY STATION & BUS STATION



**FOR
TASTY VEGETARIAN FOOD**

**Open:
Daytime Monday - Saturday**

**15 GOOSEGATE
HOCKLEY
Tel: 481115**

OUT TUESDAY

On Monday 18th October at 6.15pm, Mandy Merck, editor of Channel 4's OUT ON TUESDAY, will visit Phoenix Arts to present an illustrated debate on the history of lesbians and gays and broadcasting. Using clips from the series projected onto the big screen Mandy will talk about producing the series and discuss various issues raised by the programmes.

These include the representation of gays in situation comedies and drama such as THE GOLDEN GIRLS and PRISONER - CELL BLOCK H; gay club life, a case study of Newcastle Upon Tyne; gay casting in the American and British film industries; TORCHSONG TRILOGY and MY BEAUTIFUL LAUNDRETTE.

The evening will be both entertaining and thought-provoking, an opportunity for everyone to air their views.

OUT ON TUESDAY was the first British television series made by and for lesbians and gay men. It covered a wide variety of issues, from films and television to lesbian fostering and adoption.

Mandy Merck is an eloquent and dynamic speaker with vast experience in film, television and journalism. Previously editor of SCREEN Magazine and film reviewer for CITY LIMITS, she has written widely on the entertainment industry: topics ranging from Doris Day to Women Bodybuilders.

HYSON GREEN WHOLEFOODS

Mon-Sat 9.30-6
(Thurs/Fri til late)

A wide selection of Fresh snacks and Bread, Herbs, Spices, Soya Products, Grains and Pulses.

72 RADFORD ROAD ☎ 702056

A CRY IN THE DARK



Scared, worried, or just
confused about Aids?

Then Ring
Nottingham
Aids
HELPLINE
0602
585 526

Now open four nights a week

Monday - Thursday evenings 7-10pm

For Confidential and Accurate
Advice and Information

Nottingham Aids Information Project
G6 CV3, 35 Mansfield Road Nottingham NG1 3FF



Wilhelmina Wiggins Fernandez in 'Diva'

DIVA/France 1981/117 mins
A black prima donna in Paris becomes accidentally involved in drug smuggling and murder. Two audio tapes demand to be heard - on one the vital testimony to convict a crooked cop, on the other an illicit recording of the opera star Cynthia Hawkins. Both are in the possession of Jules, a Parisian postal worker with an operatic obsession, who is the target for a massive crime syndicate. Visual jokes, dazzling decor, detectives and punks in a brilliant action movie.

A CRY IN THE DARK/1989

On a family camping trip at Ayers Rock, a baby disappears. Its blood-stained clothes are discovered. The parents claim a wild dog to be responsible. They go on TV, but rather than grieve, show a readiness to promote their Seventh-Day Adventist faith. The press go to town. Rumours of ritual sacrifice and witchcraft fill the column inches. From the bare facts of the now infamous Dingo-Baby case, here's a gripping courtroom drama and a stunning expose of press and media manipulation. As the story unfolds and public hysteria gathers pace, so the film gradually swings towards the Chamberlains and their struggle against public vilification and an ignorant press. Ultimately then, this works as a kind of melodramatic right to reply, powerfully argued by Schepisi's direction and the convincing performances of Streep and Neill.

PHOENIX

Mon 11 Sept	Hors D'oeuvres	6.15
Mon 11 Sept	Little Vera	8.15
Tue 12 Sept	Little Vera	6.15
Tue 12 Sept	Matman	8.45
Wed 13 Sept	Matman	6.15
Wed 13 Sept	Betty Blue	8.45
Thu 14 Sept	Abdul Malik & Edward	8.00
Fri 15 Sept	Kanu Brathwaite PERF.	8.00
Sat 16 Sept	DIVA	11.15
Sat 16 Sept	Pee Wee's Bug Adventure	2.30
Sat 16 Sept	Ustad Anjad Ali Khan PERF.	8.00
Sun 17 Sept	A ROOM WITH A VIEW	6.30
Mon 18 Sept	OUT ON TV:	
	GAYS AND BROADCASTING	6.15
Mon 18 Sept	Twenty Days Without War	8.30
Tue 19 Sept	Hard Times	6.15
Tue 19 Sept	Chocolat	8.15
Wed 20 Sept	Chocolat	6.15
Wed 20 Sept	Hard Times	8.30
Fri 22 Sept	Cat People LATE	11.15
Sat 23 Sept	Thunderbirds	2.30
Fri 29 Sept	BIRDY	11.15
Sat 30 Sept	The Muppets Take Manhattan	2.30
Sun 1 Oct	Jean de Florette	6.15
Sun 1 Oct	Married to the Mob	8.45
Mon 2 Oct	REBEL WITHOUT A CAUSE	3.00
Mon 2 Oct	Married to the Mob	6.15
Mon 2 Oct	Directed by Andrei Tarkovsky	8.30
Tue 3 Oct	Days like These	7.30
Fri 6 Oct	Angel Heart LATE	11.15
Sat 7 Oct	Thunderbirds are Go	2.30
Sat 7 Oct	Dangerous Liaisons	6.15
Sat 7 Oct	Manon des Sources	8.45
Sun 8 Oct	Tangled Web	3.00
Sun 8 Oct	Moon in the Gutter	6.15
Sun 8 Oct	Dangerous Liaisons	8.45
Mon 9 Oct	Wings of Desire	3.00
Mon 9 Oct	La Lectrice	6.15
Mon 9 Oct	Bull Durham	8.15
Tue 10 Oct	Bull Durham	6.15
Tue 10 Oct	La Lectrice	8.30
Fri 13 Oct	Lair of the White Worm	11.15

11 Newark Street Leicester LE1 5SS
Box Office 0533 554854

The METRIO

Sun 10 Sept	La Ronde	6.00
Sun 10 Sept	Shame	8.30
Tue 12 Sept	Moon in the Gutter	8.00
Wed 13 Sept	A Cry in the Dark	8.00
Thu 14 Sept	A Cry in the Dark	8.00
Fri 15 Sept	TORCH SONG TRILOGY	8.00
Fri 15 Sept	Fatal Attraction LATE	11.30
Sat 16 Sept	Frankenstein	2.00
Sat 16 Sept	TORCH SONG TRILOGY	8.00
Sun 17 Sept	A Bout De Souffle	6.30
Sun 17 Sept	TORCH SONG TRILOGY	8.30
Tue 19 Sept	Shoot the Pianist	8.00
Wed 20 Sept	Little Dorrit Part One	7.30
Thu 21 Sept	Little Dorrit Part Two	7.30
Fri 22 Sept	Pelle the Conqueror	7.30
Fri 22 Sept	Crimes of Passion LATE	11.30
Sat 23 Sept	BT	2.00
Sat 23 Sept	Pelle the Conqueror	7.30
Sun 24 Sept	La Fiancée du Pirate	6.00
Sun 24 Sept	Pelle the Conqueror	8.30
Tue 26 Sept	Nightfall	6.00
Tue 26 Sept	Pelle the Conqueror	8.30
Wed 27 Sept	Pelle the Conqueror	7.30
Thu 28 Sept	Pelle the Conqueror	7.30
Fri 29 Sept	Working Girl	6.30
Fri 29 Sept	Chocolat	9.00
Fri 29 Sept	Five and a Half Weeks LATE	11.30
Sat 30 Sept	Reverend Story	2.00
Sat 30 Sept	Working Girl	6.00
Sat 30 Sept	Chocolat	8.30
Sun 1 Oct	Last Year in Marienbad	6.30
Sun 1 Oct	Chocolat	8.30
Tue 3 Oct	Dark Passage	6.30
Tue 3 Oct	Working Girl	8.30
Wed 4 Oct	Working Girl	6.30
Wed 4 Oct	Hard Times	9.00
Thu 5 Oct	Working Girl	6.30
Thu 5 Oct	Hard Times	9.00

GREEN LANE, DERBY 40170



THE OLDE
AVESBURY
Derbys Best Gay Pub
Plus
KNIGHTS
Cabaret & Disco Bar
STAR CABARET
Disco every Thurs
& Sat!

Free Admission in
KNIGHTS Bar upstairs
+ Disco

GIVE US A TRY
YOU'LL LIKE US
Tel DERBY 293408
192 Osmaston Rd
Derby

BIRDY/USA 1985/120

mins.
Vietnam veteran Al Clumbato is summoned to a military hospital where he discovers his old buddy Birdy squatting alone in a bare cell, to all intents and purposes a bird. Doctors can do nothing so Al starts talking and in a series of flashbacks we see their childhood in a poor Philadelphia neighbourhood, and Birdy's erotic obsession with birds and flight.



REBEL WITHOUT A CAUSE/USA 1955/106 min

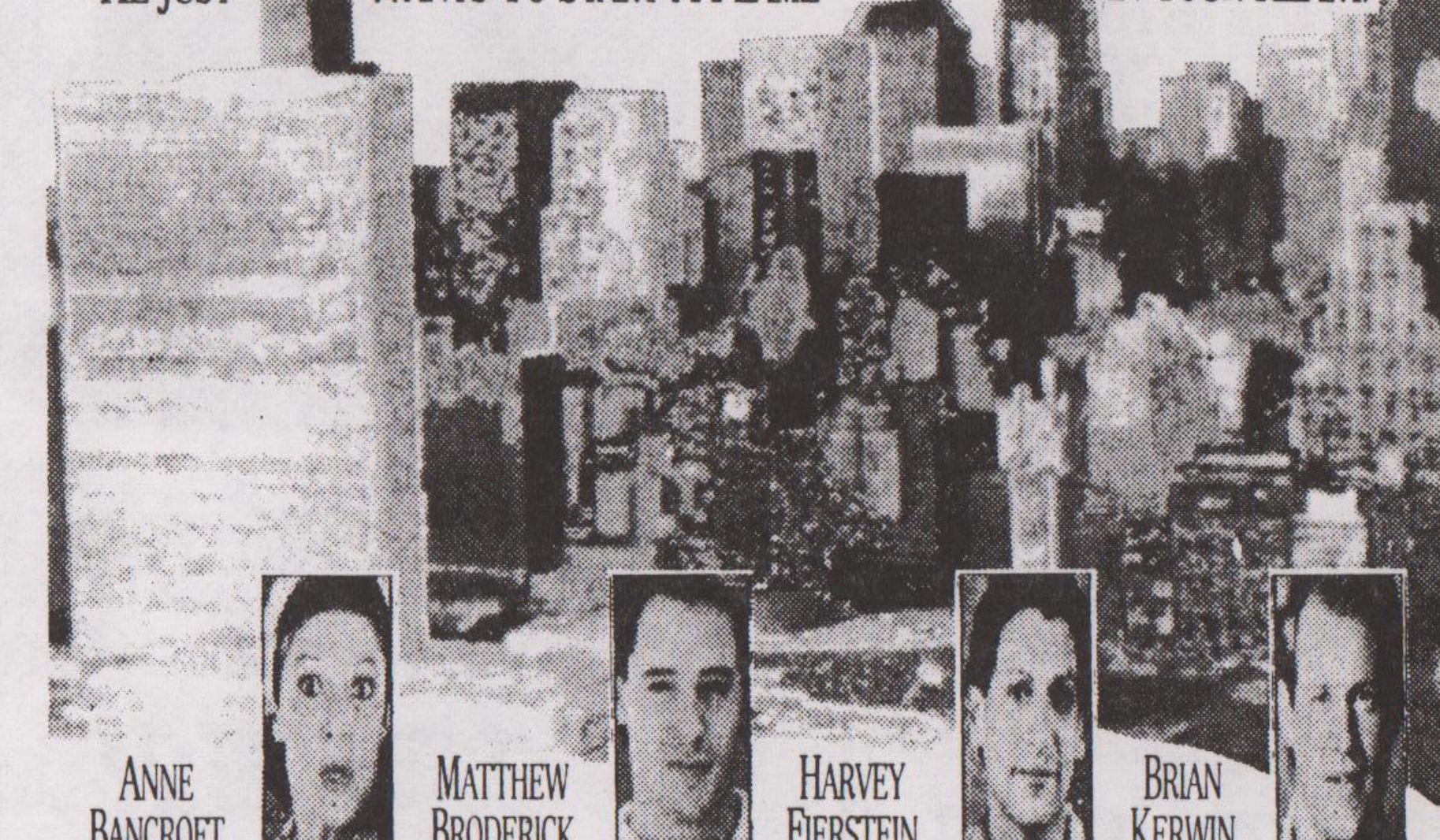
One of the most controversial movies of its decade. A sharp, angry comment on family life which shook comfortable middle class America. Dean is simultaneously vulnerable and defiant as the tormented adolescent in this analysis of family tension. One of the first depictions of the emotional gulf and conflict of aspiration between post-war American youth and their parents. This film catapulted James Dean to stardom as the prototype fifties rebel.



A ROOM WITH A VIEW/GB

1985/114 mins.
Back by popular request, the film combines a cool cinematic elegance with all of E. M. Forster's dry, absurdist wit. Arriving at a Florentine pensione, young Lucy Honeychurch (Helena Bonham-Carter) and her chaperone Charlotte fall in with plain speaking Mr. Emerson and his impulsive son George (Julian Sands). Quiet passions are unleashed by the atmosphere of Italy, after which the cast repair to genteel Surrey in order to calm down. Until George reappears. "A film as near perfect as it's possible to conceive" ALEXANDER WALKER, "Evening Standard"

ARNOLD DOESN'T WANT TO SET THE WORLD ON FIRE...
HE JUST WANTS TO START A FLAME IN YOUR HEART.



ANNE BANCROFT

MATTHEW BRODERICK

HARVEY FIERSTEIN

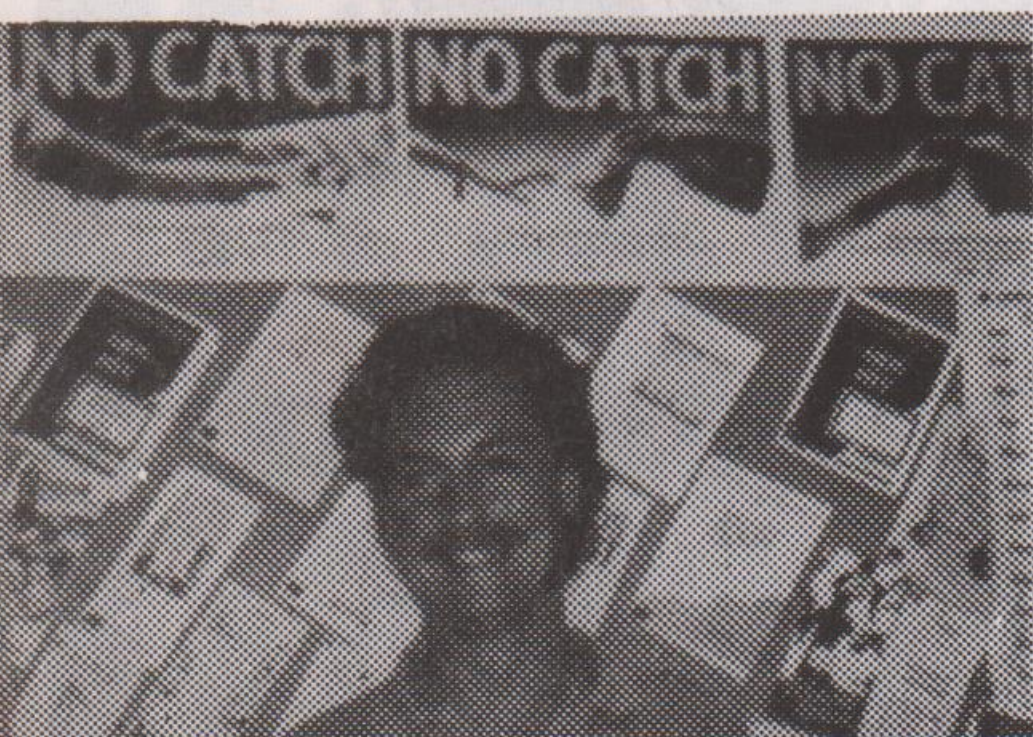
BRIAN KERWIN

TORCH SONG TRILOGY

BASED ON THE TONY AWARD-WINNING BROADWAY PLAY

An encore for this fine, funny and faithful adaptation of Harvey Fierstein's hit play, dramatising a decade in the life and loves of a New York drag queen, TORCH SONG the film has already been rapturously received by critics and audiences alike (including those who saw it at the METRO in July). If you haven't yet had the pleasure, here's an indicator of why this is fast emerging as one of the films of the year. "From the opening scene when Arnold is caught in the symbolic closet wearing his mother's frock and high heels, he is fated to a lifelong struggle between pleasure and pain. The odyssey will take him from closet to stage, backroom to bedroom in a personal allegory of gay history. Fierstein is audacious throughout and with Bancroft as his archetypal Jewish Momma, camp gay and New York Jewish humour collide and coalesce in an unmissable theatrical confrontation." CITY LIMITS.

AIDS



ROAD SHOW

"For the first time ever in the region statutory authorities and voluntary organisations have come together to promote a package of new ideas aimed at improving people's knowledge of HIV", said Clive Aylesbury, AIDS Liaison Officer for Southern Derbyshire Health Authority.

The HIV virus which can lead to AIDS can only be transmitted in specific ways and it is hoped that a greater understanding of HIV will enable people to protect themselves from the virus while also increasing their compassion for people who have HIV or AIDS.

Information stalls will be touring Derbyshire throughout the week 11-15th September, 10am-4pm, including Eagle Centre Derby and Chesterfield Market on the 15th September. At the same time, main libraries throughout Derbyshire will be mounting displays and in addition AIDS awareness evenings will be staged at a number of pubs and clubs in the County.

Derby Aidsline will be open an extra hour, Mon-Fri, 7-10pm and will be launching an appeal for new volunteers through Central Television. "We welcome new volunteers, so if you would like more information please ring us on Derby 290766," said Clive.

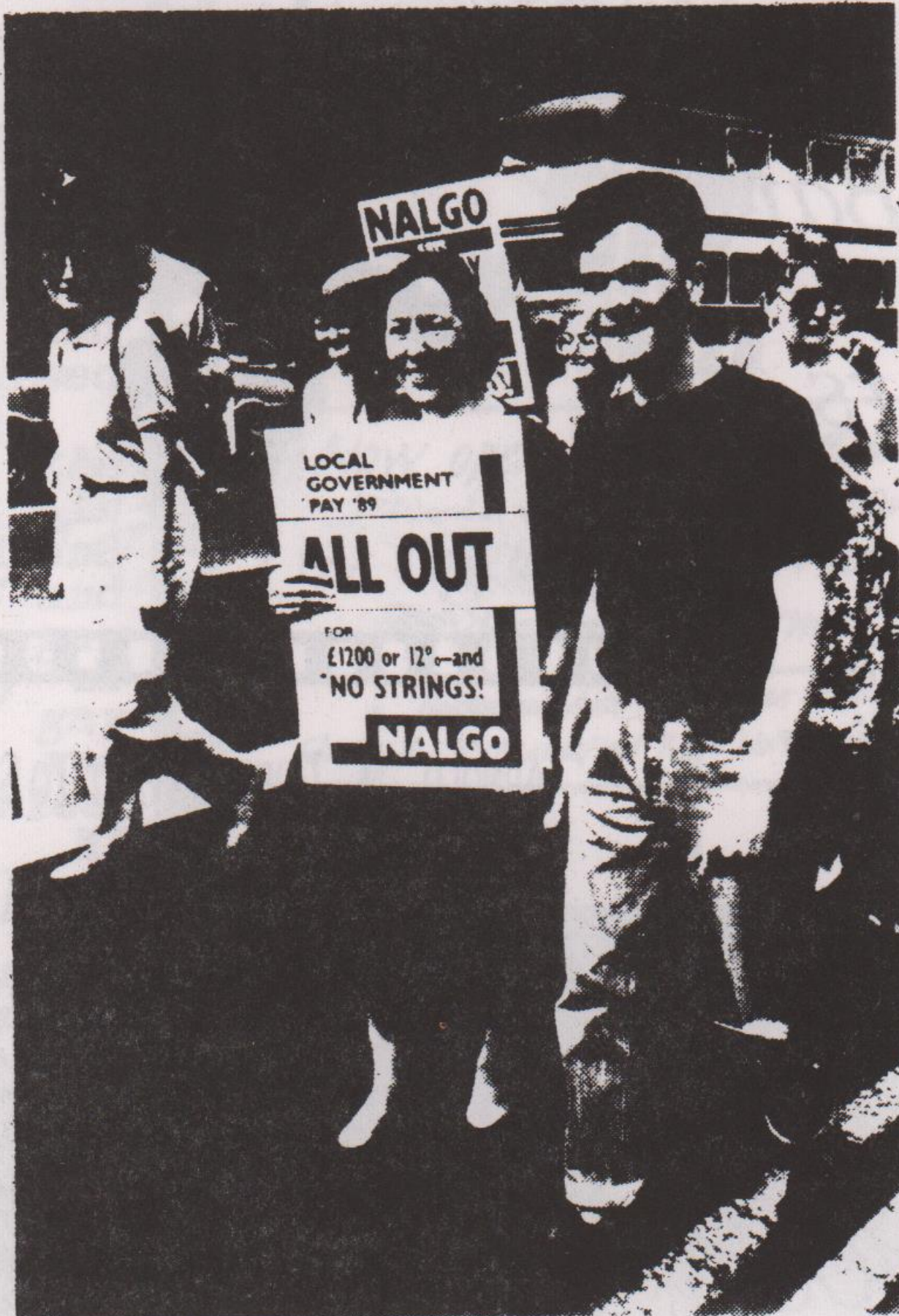
PHENIX Leicester

18 September at 6.15 pm

OUT ON TV: GAYS AND BROADCASTING

Mandy Merck, editor of the Channel 4 series OUT ON TUESDAY will talk about plans for the series in the wider context of the history of gays in broadcasting illustrating her talk with extracts and material from the series.

0533 554854



Standing together: Mother & son

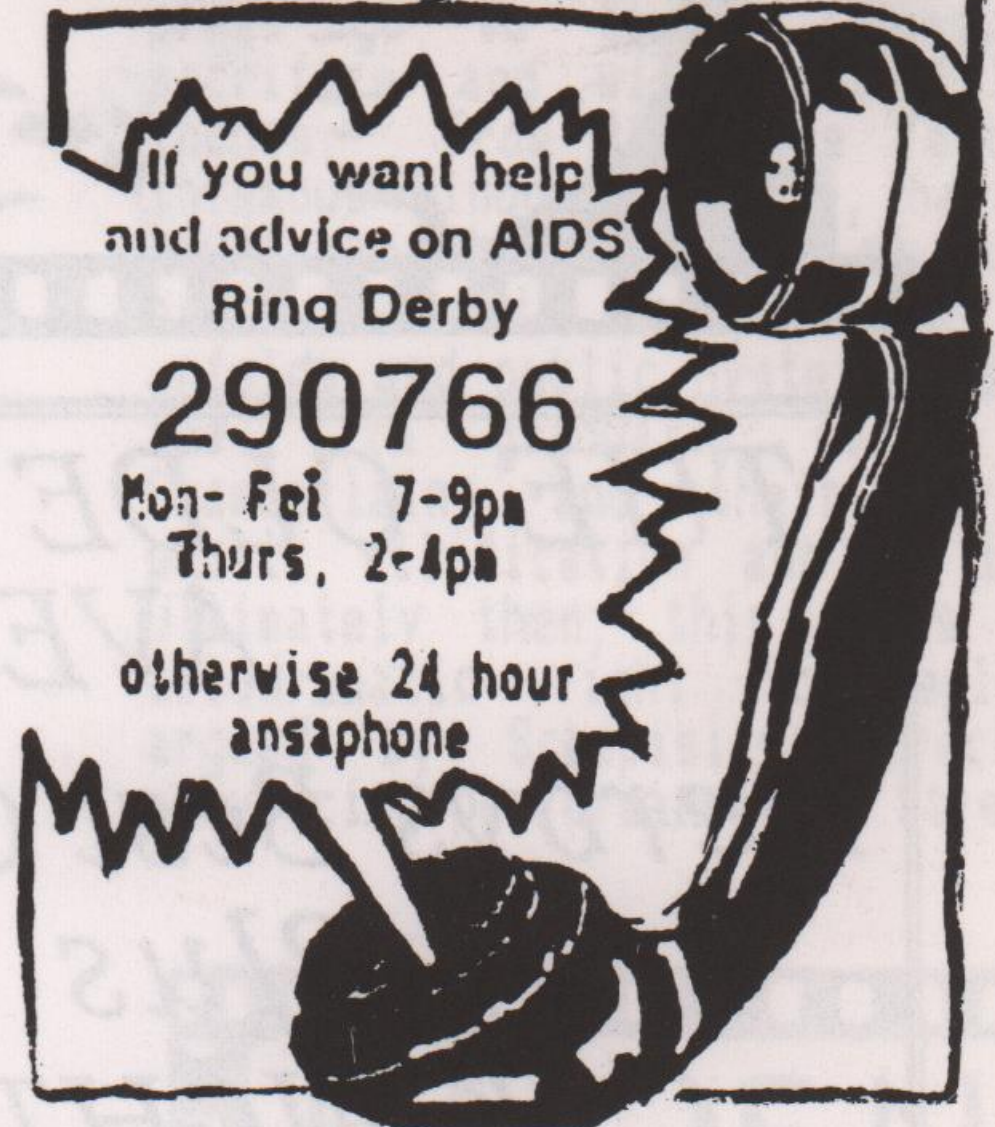
AIDS-LINE

If you want help
and advice on AIDS
Ring Derby

290766

Mon-Fri 7-9pm
Thurs. 2-4pm

otherwise 24 hour
ansaphone



CAN YOU HELP?

Derby Friend is looking for new volunteers to help operate their telephone helpline and related services on a rota basis. If this interests you why not get in touch? Full training and support is given to new volunteers.

We offer befriending, counselling, health advice and information to people who feel that they have a gay or lesbian-related problem. As well as the phonework there are letters to deal with, personal visits by callers to the office and outside visits. There is also a 24 hour ansaphone. Derby Friend is affiliated to a number of organisations including the British Association for Counselling and has close links with local statutory and voluntary organisations.

For more information or an informal chat please contact them on Derby 49333 or write to Derby Friend c/o CVS, Kings Chambers, Queen Street, Derby, DE1 3DS.

NOTTINGHAM

Independent
bookshop with wide
stock of gay, lesbian
and women's issues
plus fiction, politics,
inner life, poetry and
much more.

Mushroom Bookshop

10, Heathcote Street
Nottingham, NG1

Tel : 0602 582506

Steve and Tony welcome everyone to the GREEN LANE GALLERY



Cosy Atmosphere Pool Room
Bar Snacks Real Ales
Full Sunday Lunch Car Park

Opening Hours

Mon-Thurs 8-11 pm; Fri 12-3pm, 7-11pm;
Sat 11-11pm; Sunday 12-3pm, 7.30-10.30 pm.

Green Lane Gallery, Green Lane, Derby
(next to Little City Car Park)

Tel Derby 368652

GIVE ME MONEY



Do you know someone who needs financial help? - who doesn't?! Seriously though, the Pavilion Trust may be able to help.

The Trust was established in June 1985, almost literally from the ashes of the much lamented Pavilion Club at Shardlow (one of the first Gay clubs in the Midlands) which was owned and run entirely by its membership

REVIEW

HEARTBREAK ON THE HIGH SIERRA



Fiona Cooper

Fiona Cooper's second novel is a tale of tough-minded women in big boots, where spurs jangle and all the baddies will hopefully bite the dust. It tells the story of Helena Stanforth, also known as Typewriter, who, searching for peace and safety, makes it to Kimama, the Valley of the Butterflies, where she meets Suzanna LaReine "a vision in cream rawhide", and her crew of outlaw women who all get by just fine without any men.

Although the book is light-hearted, with a strong sense of the ridiculous, the characters are well-enough drawn to engage the reader's emotions. Mercedes Assassina is particularly sharp with her glinting stiletto, and Mary Maloof Fingerbone commands respect from her drunken position on the porch. But by far the most entertaining has to be Lulumae van Doon, a vicious Southern Belle whose husband's property development plans threaten the women's way of life. She appears complete with surney, parasol and a very amusing phonetically written Southern drawl.

The narrative tears along at a sparkling pace and the romance between Helena and Suzanna is gripping stuff. Perhaps it falters slightly with the introduction of the supernatural; Amelia Earhardt and her instructor arrive, and Calamity Jane rises from the grave. Although essential to the plot (and perhaps saying something quite important about strong women together) they do seem to detract from the actual story. However, in spite of that, the book is a lot of fun to read, especially as an alternative to a night in watching the television set, and is certainly not a disappointment after the success of her first novel, "Rotary Spokes." ELIZABETH MILWARD

(The thirteen-year old Club was destroyed by fire earlier that year).

The money from the sale of the land and from the insurance payout was used to establish a Trust fund which is administered by trustees, all former club members who meet twice-yearly. (The next meeting is in November). The main objectives of the trust are 'to provide financial assistance to organisations and individuals for the furtherance of projects and activities deemed by the trustees to be of benefit to the gay community'.

Applications for assistance are invited particularly from people who live or work in Nottingham, Derby and Leicester or places in between and should be addressed to the Hon. Secretary, Pavilion Trust 18, Belmont Avenue, Breaston, Derby, DE7 3AA, and accompanied by a brief explanation of why the money is needed and how it might be used.



TEN

WE'RE STILL HERE!

NEVER MIND THE RUBBLE
10 Commerce Square,
Nottingham Tel: 585211

Opening hours

Tuesday to Friday 5.30 to 11.15p.m.

Saturday midday to midnight

- Menu changes every 2-3 weeks.

- At least 10 choices of main course, 5 of starters and 5 of sweets.

- Outside catering, weddings and parties. Bar available.

- Restaurant available for private parties on Sundays and Mondays.

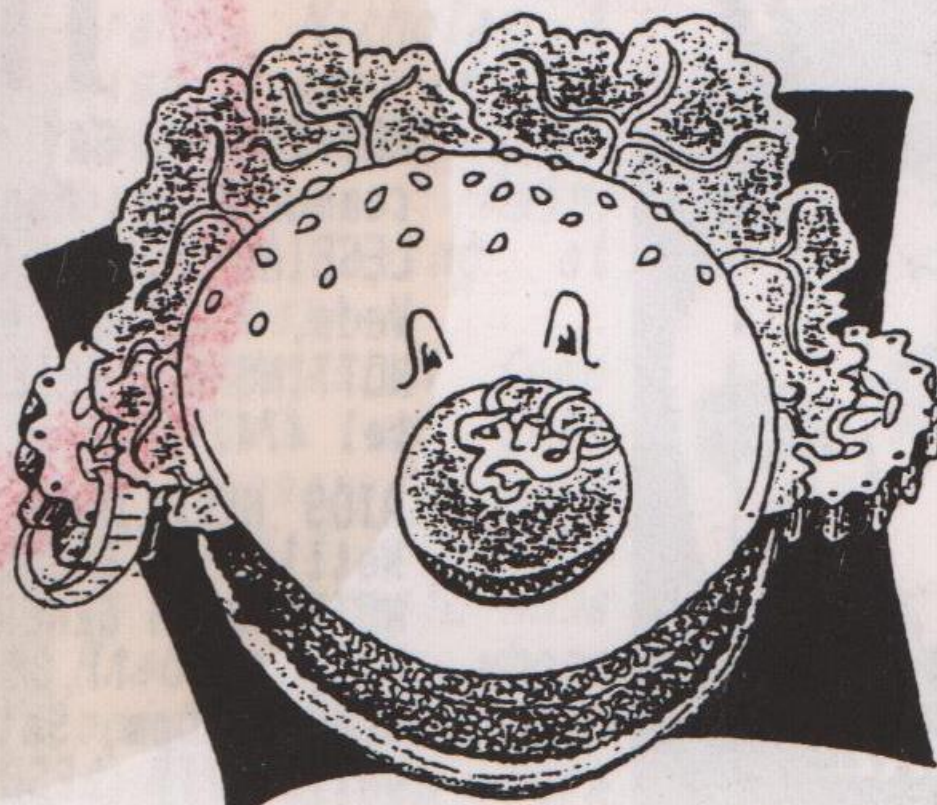
- Meals for your freezer sold at the restaurant from midday, with 4 or 5 excellent dishes to choose from.

- Easy parking.

TASTE THE FOOD!

VEGGIES

CATERING CAMPAIGN (NOTTINGHAM)



Tasty Wholesome Snacks

LUNCHTIMES AT
CLINTON STREET WEST

LIZ BAILEY

First the pick of the crop of new releases, "California Blue" by Roy Orbison, a must for big O fans, "Come Home With Me Baby" a new one from Dead or Alive; "Dressed for success" by Roxette; and a new one from Natalie Cole, "Rest of the Night". The London Boys release their album "The Twelve Commandments of Dance". This includes Requiem, London Nights, My Love and nine more. One of the most outrageous singles of '89 must be French Kiss by Lil Louis. When I first played it I got looks of utter disbelief. The record slows down just before the lady makes all the groaning sounds.

Bea Smith alias Val Lehman was a great success at her appearance in Leicester. She has a very strong personality and I was impressed by her strong command of the audience. I had a word with her and told her of her many fans here in Leicester. Pity she could not sign autographs. I have heard many rumours why she didn't. I wonder if I'll ever know the real reason.

Had a good night out the other Saturday at the Old Avesbury in Derby. A very nice disco room with a very good sound system, probably one of the best I have heard in a long time. The music was very good and you could hear it without some of the usual loud distortions. Thank you Paul for making us welcome. We'll be back.

Those teeny bopper idols Bros were turned out of the Queens' store, Harrods the other day due to their torn jeans, don't think they were very pleased.

Betty Bobbitt alias Jude - Cell Block - is a good stand up comedienne and may come on a tour of clubs next year. She attended weight watchers and lost weight. This information is straight from queen Bea herself.

By the time you read this I will have done a disco for 200 kids. All they want is Kylie, Jason and Michael Jackson, still it's good clean pop and keeps them happy.

Tina Turner, now fifty and living in London, is emerging from retirement, and talking about British gigs following the release of her new album Foreign Affair.

Nice to see Eartha Kitt back in the charts with Cha Cha Heels. Her biggest hit since Under the Bridges of Paris got to be No. 7 thirty-four years ago, is not one of my favourites but the 'B' side is very good. Keep your ears in tune, Cell Block's still No. 1.

HIZIKI WHOLEFOOD COLLECTIVE

Breakfast Cereals, Dried Fruit,
Nuts, Pulses, Flours, Spreads,
Organic Veg, Yoghurts, Pasta,
Organic Wines & Beers . . .

PLUS

A Wide Selection Of Vegetarian
Meals (frozen, tinned and dried)
And An Enormous Range Of Fresh
Take Away Food and Bread
Delivered Daily

Open 6 Days a Week

15 Goosegate Hockley
Nottingham Tel. 505523

ANNE FRANK in the WORLD

A MAJOR INTERNATIONAL EXHIBITION
PROMOTING UNDERSTANDING BETWEEN COMMUNITIES

Fifty years this month marks the outbreak of World War II and five years later there were over fifty million dead around the world. Amongst them were six million Jews and other minorities, including half a million lesbians/gays who were also exterminated in the concentration camps. The Anne Frank in the World exhibition explores the fate of a Dutch Jewish family, before they were caught up in the tide of events which we now know as the Holocaust. The child's diary and family album salvaged from their hiding place after the war are set in context beside contemporary records. The events shown happened to ordinary people. The deeds shown were done by ordinary people. (below is the memorial to gays who died at Mauthausen concentration camp, Poland).

**YMCA, Shakespeare Street
NOTTINGHAM**

OCTOBER 2nd - 28th '89

open 10am - 9pm; closed for the Day of Atonement from
5pm October 8th to 10am October 10th. Admission free.

plus CELEBRATION OF SURVIVAL

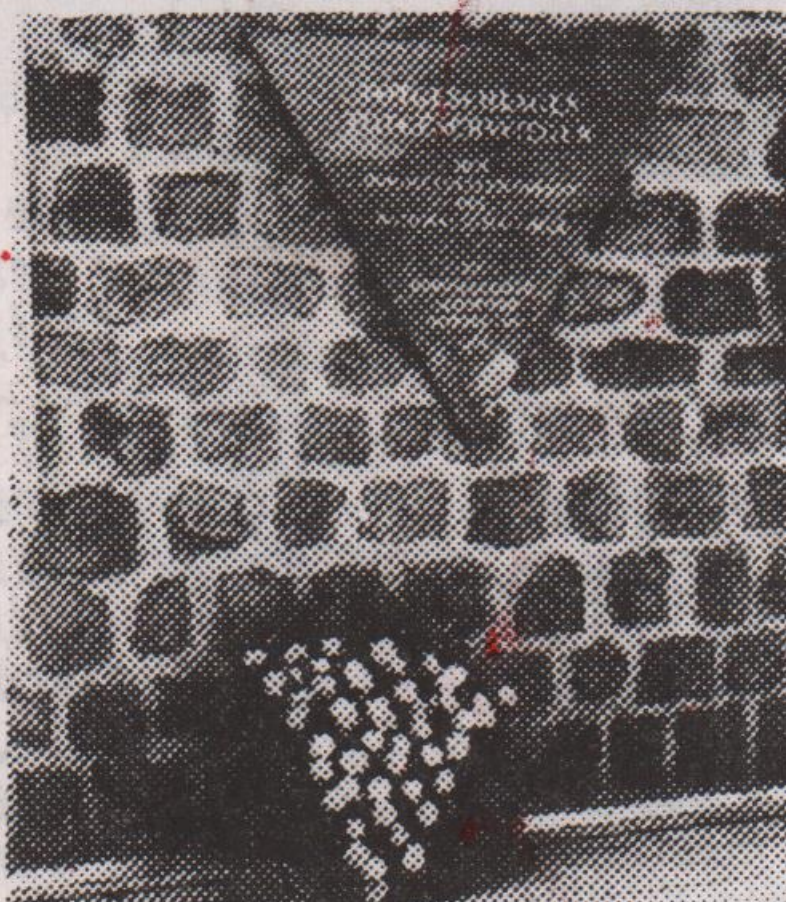
For further information contact YMCA, tel. 0602 473068

RABBI COMES OUT

number of people who think of him as a "friend". He said: "I found that you've got to speak much more personally and reveal more of your life."

He described how at one time he tried not to have sex at all. "I ended up on massive doses of librium and valium, with a breakdown. That doesn't help."

"The truth shall make you free" he said - presumably, especially at quarter to eight in the morning, whilst broadcasting to the Prime Minister who brought in Section 28.



The Monument at Mauthausen

TELEPHONE DATING



GUYS FOR GUYS

FROM INSIDE LONDON (01 AREA) 0077 775 207
OUTSIDE LONDON 0898 400 917
0898 400 918

MIDLANDS (ALL AREAS) 0898 400 927
0898 400 928

FROM INSIDE MANCHESTER & LIVERPOOL (061 051 AREA) 0077 775 207
NORTH (ALL AREAS) 0898 400 967
0898 400 968

Ring Telephone Dating now and listen to people who want to meet new friends and companions.

The lines are open 24hrs a day
7 days a week



GIRLS FOR GIRLS

(ALL AREAS) 0898 400 937
0898 400 938



25p (off peak) & 38p (standard peak) per min inc VAT
FREECALL 0800 269 946

For a wide range of vegetarian & vegan foods, organic produce, baked food, plus a friendly service, advice and information.

over 170 herbs for culinary & medicinal use, bio-degradable and cruelty-free products.

OUROBOROS wholefood collective

37a Mansfield Rd, Nottingham

ANNE FRANK in the WORLD

Saturday, 23rd September
"SHOAH"/FRANCE 1985/Pt. 1/260 mins, 2.30pm,
Totally compelling documentary, compiled over 10 years. Lanzmann unblocks the memories of witnesses of the extermination camps.

Sunday, 24th September
"SHOAH"/FRANCE 1985/Pt. 2/300 mins, 2.30pm.

Tuesday, 10th October

The Rise of Fascism

"THE TIN DRUM"/1979/142 mins, 7.30pm.

Vivid film version of Gunter Grass's popular modern classic. Not caring for the world he is growing up in, a small boy determines to remain a child.

Saturday 14th October

"MEIN KAMPF"/SWEDEN/1959/118 mins, 7.30pm

A newsreel compilation tracing the rise and fall of Nazi Germany. The events speak for themselves. A powerful documentary.

Sunday 15th October

"THE DAMNED"/Italy 1969/164 mins.

A family of German industrialists divides and destroys itself under Nazi influence.

The above films will be shown at the NOTTINGHAM MEDIA CENTRE, (formerly Cooperative Education Centre in Broad Street.



The organisers of the highly successful recent Nottingham gay arts exhibition (Liz, Helen and Diana)

HELPLINES

NOTTINGHAM GAY SWITCHBOARD, your helpline to the gay/lesbian communities, Mon-Fri, 7-10pm (0602) 411454

LESBIAN LINE, Confidential help/advice for lesbians, Mon & Weds, 7.30-9pm (0602) 410652

NOTTINGHAM FRIEND, Tues, 7-10pm, counselling & befriending, tel 474717 or write c/o 31a Mansfield Rd, Nottingham.

AIDS HELPLINE, Worried about AIDS? Call us Mon-Thurs, 7-10pm, Nottingham 585526. Accurate information reduces anxiety.

NOTTINGHAM GENERAL HOSPITAL VD CLINIC, 475989, daily, Mon-Fri, 9.30-11.30am, Tues & Weds 2-3.30pm, Eves, Mon & Thurs 4.30-6.30pm, Sats, Emergencies only 9.30-10.30am.

UNIVERSITY LESBIAN/GAY PHONELINE, term-time, Mon, 8-Midnight, (0602) 580421. If on campus call Internal 3474.

LEICESTER ROYAL INFIRMARY Infirmary Close (Nr, BR Station)

VD Clinic Tel: Leicester 541414 x 5208

LEICESTER LESBIAN/GAYLINE, Mon-Fri, 7.30-10.30pm (0533) 550667

LOUGHBOROUGH LESBIAN/GAY GROUP, Confidential help/advice, 7-9 Loughborough 610581 (7-9pm, Tuesdays. term-time only).