



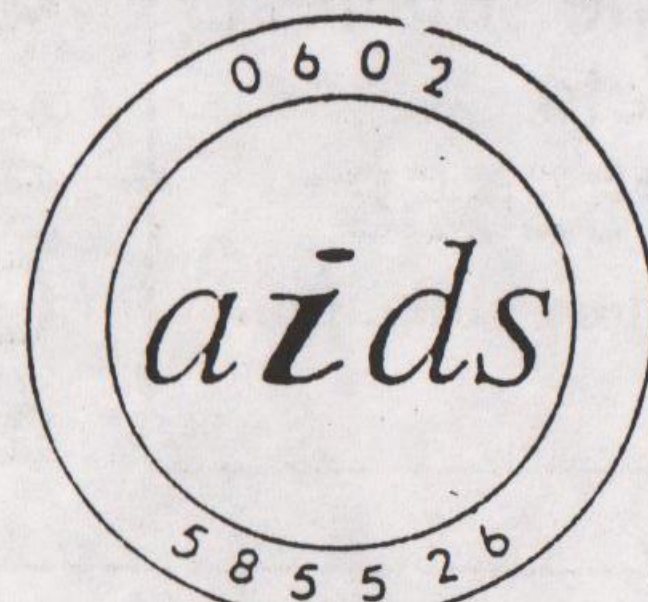
Tom Robinson Band

Tom Robinson

"Sing if You're Glad to be Gay"

runs the chorus to Tom Robinson's most famous hit, which topped the charts in 1979 and established Tom as one of the foremost out-gay singers for a decade. His band's unique mix of outspoken lyrics and electrifying guitar were evidenced on their outstanding album 'Power in the Darkness'. After touring and producing albums alone in his own definitive style, Tom has recently reformed the original TRB, consisting of Danny Kustow on guitar, Mark Ambler on keyboards and Robinson on bass. He is definitely back to his old form - the trio worked on his 1984 hit, 'War Baby'. Although these days, Tom defines himself as bisexual, he's certainly done time as a campaigner for lesbian/gay rights. See him headlining at the Heineken Music Big Top at Wollaton Park on 25th May.

THE NOTTINGHAM



INFORMATION PROJECT

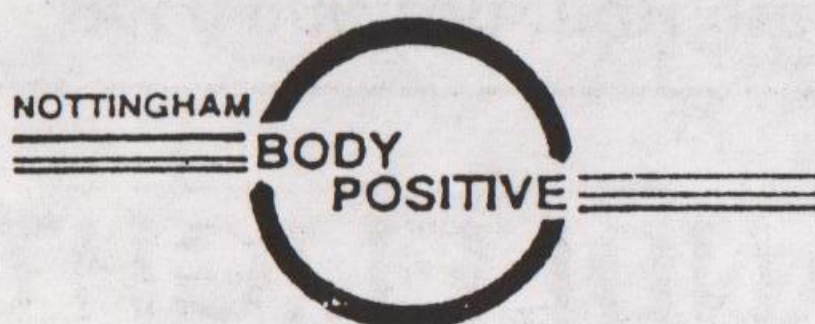
SCARED, WORRIED OR JUST CONFUSED ABOUT AIDS?

The AIDS Helpline is now open 4 nights a week (Mon-Thurs 7-10pm) for accurate, confidential advice and information and referral for support within the community.

New volunteers always welcome.

For further information, write to PO Box 208, Nottingham NG1 1NZ

NOTTINGHAM BODY POSITIVE



IF YOU ARE:

- HIV ANTIBODY POSITIVE
- HAVE ARC
- OR AIDS

then why not talk to people in the same position in an atmosphere of total confidentiality.

Call us on:
NOTTINGHAM 581555
Wednesdays 7 p.m.-10.00 p.m.
or write to:
Nottingham B.P.
P.O. Box 205
Nottingham NG3 3B1

Activities include:
● Support
● Information
● Fund raising
● Links to Aids Information Project and Buddies.

To advertise here, call
Simon on 0602 472668

HELPLINES

NOTTINGHAM GAY SWITCHBOARD, Mon-Fri, 7-10pm, 411454
NOTTINGHAM LESBIAN LINE, Confidential help/advice for lesbians, Mon & Wed, 7.30-9pm, 410652
NOTTM AIDS HELPLINE, Worried about AIDS? Call us, Mon-Fri, 7-10pm, 585526, Accurate info, reduces anxiety
LEICESTER LESBIAN/GAYLINE, Mon-Fri, 7.30-10.30pm, 550667
DERBY FRIEND, Weds, 7-9.45pm, 49333 or write c/o Derby CVS, Kings Chambers, Queens Street, Derby
DERBY AIDSLINE for help and confidential advice, tel free on 0800-622738, Mon-Fri 7-9pm, Thurs 2-4pm
DERBY LESBIAN LINE, Wednesdays 7-9pm, 414111 or write c/o PO Box 140, Derby
GAY CHRISTIAN MOVEMENT (LGCM) Paul (0602) 255514 or Sheila (972) 23687. Details: Paul Smith, 35 Bramcote Rd, Beeston, Nottingham NG9 1AJ
NOTTINGHAM UNIVERSITY LESBIAN & GAY PHONELINE, Termtime Mondays 8pm-midnight, on campus call internal x3474
ALCOHOLICS ANONYMOUS GROUP FOR GAY PEOPLE, 1st Tuesday of each month, 417100, Room 7a, ICC, 61b Mansfield Rd, Nottingham
LOUGHBOROUGH LESBIAN & GAY GROUP, Tuesdays 7-9pm, (0509) 610581, all welcome

BARRIE & JULIAN
WARD & GRIFFITHS

SOLICITORS

3 Clarendon Street
Nottingham NG1 5HS
Telephone (0602) 412622
After Hours (0602) 602324

SMALL ADS

ACCOMMODATION available. Share of 3-bed-room house with gay man, just north of city centre, £120 p.c.m. inc. Non-smoker & employed or student preferred. Tel: 626995
PINK INK is a group of lesbian and gay writers in the East Midlands who meet together and offer supportive discussion and mutual inspiration. For details, phone 626995 or write to Box 28, Mushroom Bookshop, Heathcote Street, Nottingham.

A LESBIAN & GAY FESTIVAL IN NOTTINGHAM? Interested? If Leicester, Birmingham, Bristol, Cardiff etc can have one - why not Nottingham? Come along and discuss the possibility of a '91 Festival. Tel: 626995 for details.
MSF Union Lesbian & Gay meeting, Tuesday 5th June, 7.30pm - Leicester Lesbian & Gayline (0533) 693909.

17TH JUNE Assembly Rooms, Derby, JULIAN CLARY.

23RD JUNE Heineken Big Top, Wollaton Park, Nottingham, TOM ROBINSON.

NOTTINGHAM LESBIAN & GAY HOUSING CO-OP, Open meeting, Wednesday 23rd May, 7.15pm at International Community Centre, 61b Mansfield Road, Nottingham (disabled access).

C4 TV Saturday 19th May 11.40-12.15am

"ANGELS AND DEVILS", Ken Russell discusses his work, illustrated with clips ranging from 42nd Street to "The Rainbow".

C4 TV Sunday 20th May "MAHLER" by Ken Russell.

OUTRIGHT

Advertising 0602 472668
June copy deadline: 30th May 1990

Outright is published monthly by Naff Co-operative Ltd, PO Box 4, West PDO, Nottingham NG7 2DJ

DERBY AIDSLINE

Worried/confused about HIV/AIDS?

For confidential advice and information, phone FREE on Derby Aidsline

0800 - 622738

Mon - Fri 7-9 pm
Thurs 2-4 pm.

Issue Number 4
May 1990

OUTRIGHT

Gay Freesheet for the East Midlands

FREE!

Outraged Protestors occupy Newspaper Offices

Twenty lesbians and gay men occupied the offices of the Nottingham Herald & Post in protest at an anti-lesbian/gay article written by the paper's resident columnist, June Wall. The article, entitled "A Very Personal View - Youngsters Trapped in a Twilight World" appeared in all nine editions of the paper around the Midlands region.

In the space of three paragraphs, the article linked a London borough's plans to recruit lesbians and gay men for fostering and adoption to 'the twilight world of the homosexual' - Aids, paedophilia and rent boys.

The idea for the occupation came from Geoff Whittaker of the Nottingham Lesbian and Gay Group, who said he was very angry and insulted by the article.

"The staff were a bit surprised when we all marched in", said Nick Walton, another member of the group, "but the Editor agreed to meet five of us for a discussion which lasted nearly an hour", he said.

Editor Mike Astill said he and some other members of staff at the Nottingham Trader didn't agree with the article but didn't have any choice to refuse it, as it was syndicated to all nine papers in the region.

He agreed that he would print an article from the group in a forthcoming issue, though he refused to allow them editorial control. He also admitted that the paper had been swamped with protest letters condemning the article.

At one stage, the police were called by a member of staff and ordered the group to leave. Geoff Whittaker said: "We were beginning to get nervous as a van full of police pulled up. The Editor said he was sorry that the police had been called and the group left after he assured them that their article would be published in a future edition."

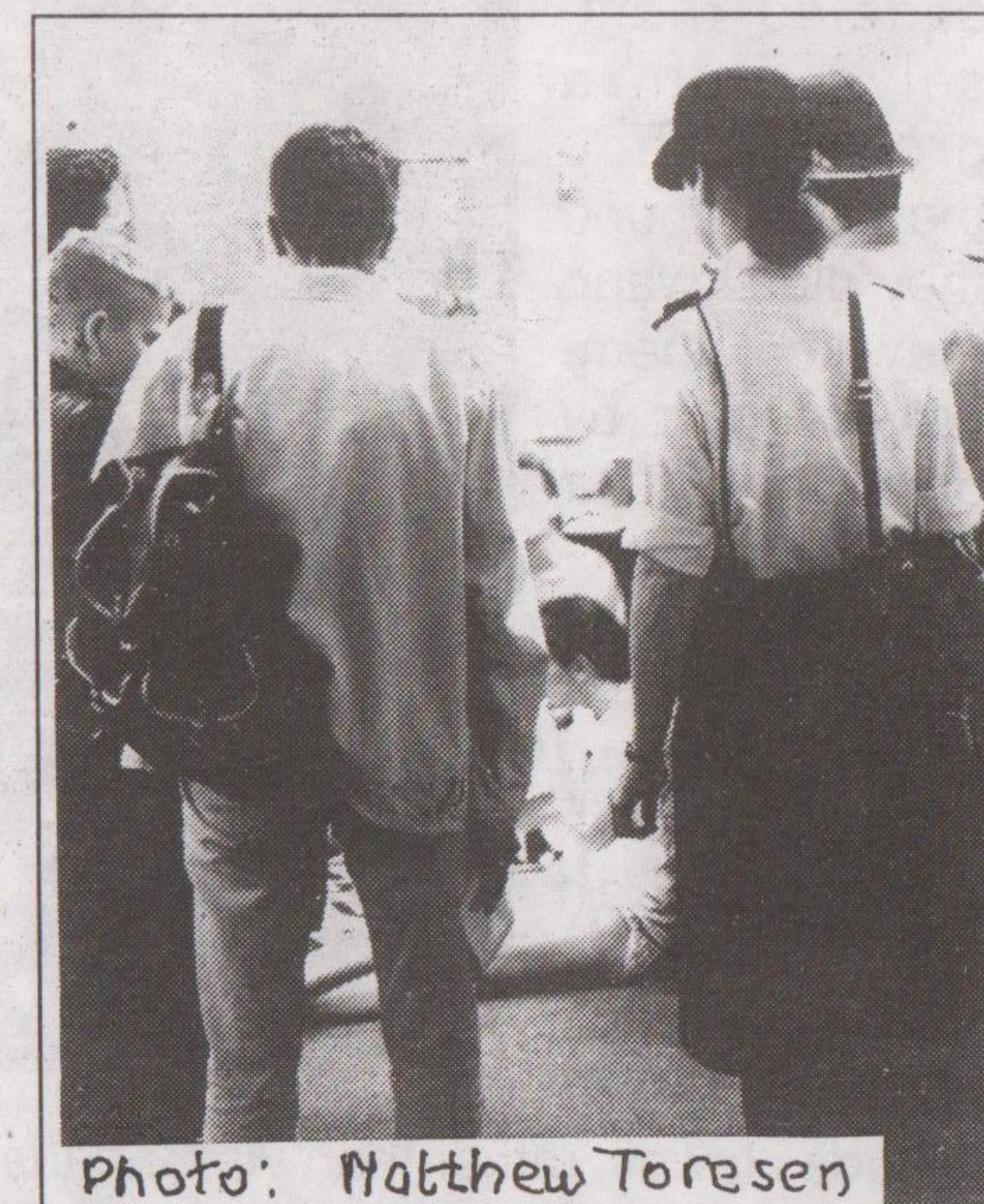


Photo: Matthew Torsen



Housing Co-op kicks off in Nottingham

The inaugural meeting of Nottingham's Lesbian & Gay Housing Co-op takes place on the 23rd May. If you are interested in helping to establish, or living in a housing Co-op, run for and controlled by lesbians and gay men, then this meeting is for you.

Nick Walton, a founder member of the Co-op, said: "Many lesbians and gay men are badly housed and what we would like to provide is affordable, quality housing where tenants are all equal in status and have a say in the running of the Co-op."

There are several successful radical housing Co-ops around the country, but this is one of the first outside London specifically to be run by and for lesbians and gay men. The meeting is at 7.15pm at ICC, 61b Mansfield Road, Nottingham; further details from Box 8, Hyson Green Wholefoods, 72 Radford Road, Nottingham or phone Nick on (0602) 423729.

NALGO sponsors PRIDE 1990

The Town Hall union, NALGO, is this year's sponsor of Pride, which takes place on Saturday, 30th June. The line-up for the main stage of the Pride Festival in Kennington Park, South London, includes comedy duo Parker and Klein, who will be hosting the show, with performances from Belgian singer Mathilde Santing, Sandie Shaw and black American poet, Stormy Weather. There is also the possibility of an appearance by Billy Bragg, as yet unconfirmed.

The Outhouse Project will again, by popular demand, be laying on a coach from Nottingham to London for Pride; tickets are £8.00 and £6.50 (UB40/NUS). You are advised to book very early to avoid missing out. Last year's coaches supplied revellers with pop and lager and sandwiches and home-bakes at affordable prices, proving so popular that they will be doing it again. Tickets will be available in early June from Mushroom Bookshop.

Inside
This Issue...

- * Lesbian & Gay Centre in Nottingham?
- * Earthquake in San Francisco
- * Tom Robinson in a big tent

Armageddon Averted

Returned from their world trip earlier this year, Nottingham residents Andrew Hibbert and Chris Pereira got more than they bargained for when they found themselves in the San Francisco earthquake!

Having saddled themselves with a grocer's shop they soon found they didn't want, they kept themselves going by dreaming of their world-trip holiday. And when the sale of their shop went through a month later than planned, they changed their holiday route to include Hawaii, rather than via Canada, and so stayed en route in San Francisco.

After a week with friends in New England, they arrived in San Francisco: "One of the first things you think about on arrival there is earthquakes, but you don't think it will ever happen to you."

The day the 'quake did happen, Chris and Andrew had completed a city-wide bus tour and had gone around the bay. "The tour guide had actually pointed out remnants of the damage caused by the 1906 'quake." It was then late afternoon and the evening rush hour had begun.

Andrew takes up the story. "We had just left the Metro at Divisadero and were walking towards our hotel in Castro district, the gay quarter. We had passed this church and a large black woman shouted to one of us, 'nice ass'. Then suddenly we heard a lot of thuds - getting louder like a herd of elephants stampeding inside the houses. Then the ground began to shake."

"We knew something was wrong and grabbed each other and ran into the nearby park. It was then that we realised that this was it! We were frightened that we might get hit by the overhead tram cables. Other people were rushing out of the houses into the park as well. Just then, this man ran out of a house liked greased lightning, sat down on the sidewalk and shook violently - he couldn't speak for shock."

"We remembered earlier in the day we had been told we were staying in a relatively safe area where the houses had been built on rock, whereas the area around the marina was on landfill, and this was where most of the damage to property occurred.

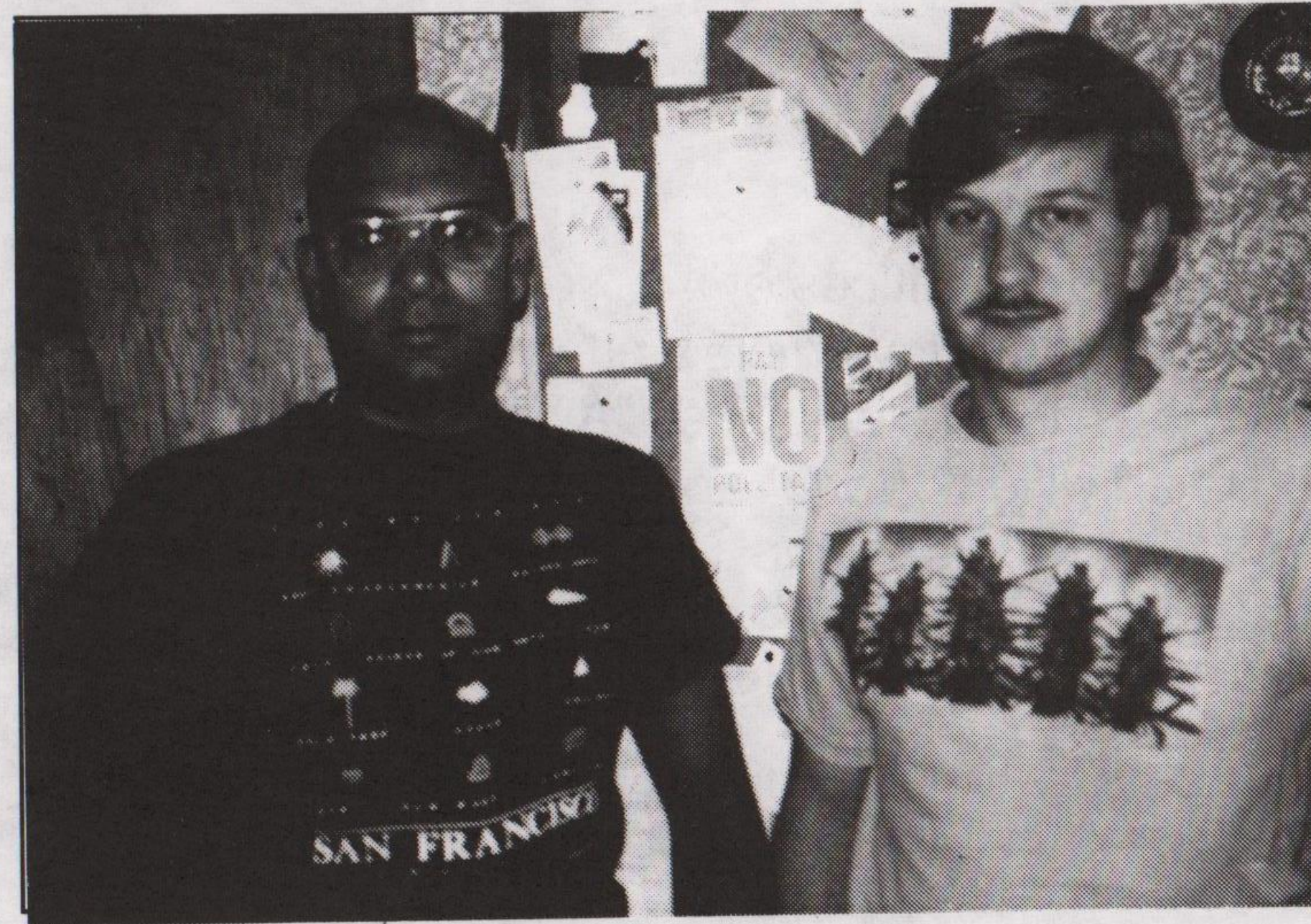
"We weren't sure whether there would be other quakes, so we stayed three hours with the same groups of people in the park; there was an air of unreality and forced casualness about it all for much of the time. People played their guitars and sang, but you could tell they were trying to hide their fears. The following day, we met a couple at the zoo who said they were in a tall building and when the 'quake struck, the chandeliers swung from one side of the ceiling to the other."

"In a country with the most advanced communications in the world, we were unable to 'phone across the city for several days and two more before we could contact New York and England. It was OK if you had a transistor - the outside world could home in on San Francisco, but we couldn't 'phone out."

"Our mothers had seen the news of the collapse of the Freeway bridge and were praying for us like mad," said Chris.

"We stayed on in San Francisco for another week. The first night was the most frightening, not knowing what we might expect; we slept under the stairs with our clothes and boots on, ready to make a quick exit."

And exit they did, to Australia, New Zealand and Asia, before returning to Nottingham in January.



Rita's
Cafe

FOR
TASTY VEGETARIAN FOOD

Open:
Daytime Monday - Saturday

15 GOOSEGATE
HOCKLEY
Tel: 481115

New union lesbian/gay group

MSF (Managerial, Scientific and Finance Union) is to have its own lesbian/gay group shortly. Lesley Mansell from Leicester has been campaigning within the union for several years and they already have an Advisory Committee on Lesbian and Gay Rights.

Said Lesley: "There are many issues of specific relevance to lesbians and gay men at work." All MSF members who identify as lesbian or gay are invited to attend a meeting, taking place in Leicester at 7.30pm on 5th June; details from Leicester Lesbian & Gayline, (0533) 693909.

music theatre wales
presents

the fall of the house of usher

a chamber opera by

PHILIP GLASS

*"a triumph for Glass but undoubtedly, a
greater one for Music Theatre Wales."
(Melody Maker)*

15 & 16 June 8.00 pm
phoenixarts
11 newarke st. leicester
0533 554854

Lesbian and Gay Youths get 'emergency' shelter

In Manchester this month, fifteen lesbians and gay men will be gathering for the final stage in their training for the role of "big brothers and big sisters" for young lesbians and gay men who are living on the streets or who simply have nowhere to go.

Since the inception of the scheme last year, the organisers of the project, the Albert Kennedy Trust, have recruited six carers and have given temporary or longer term shelter to five young people.

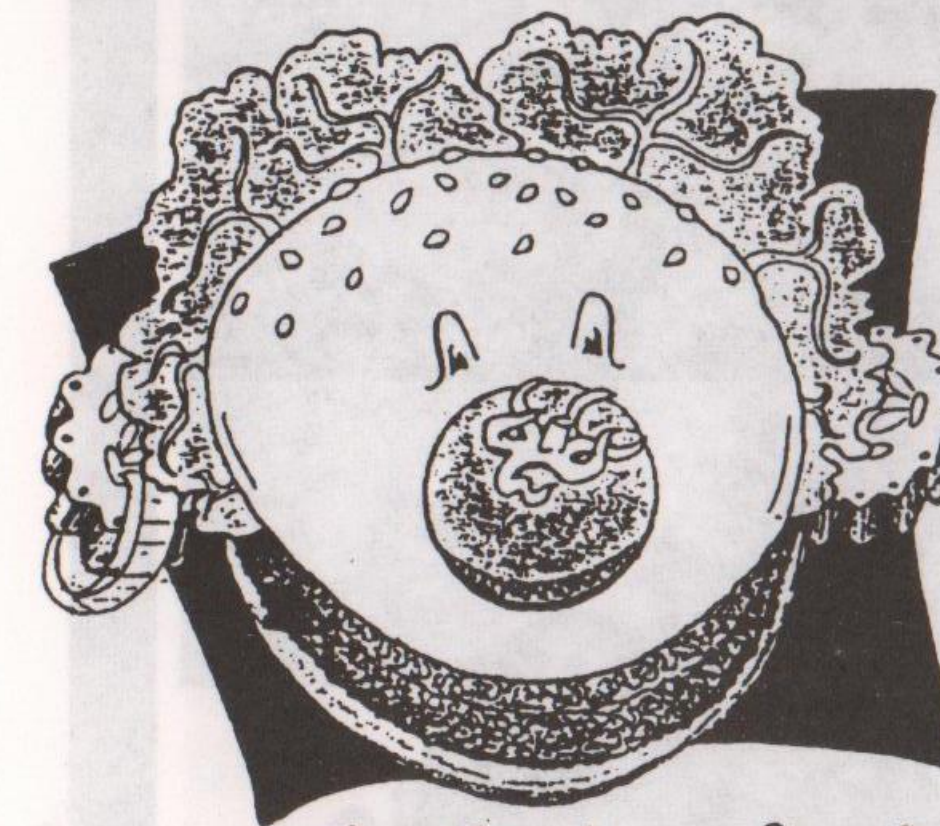
A young man was recently helped by the trust with an 'emergency' place to stay after problems arose with his parents when he came out as gay.

Often this serves as a 'cooling out' period, when carers can go and speak with parents, who are often in shock when they first learn that their children are lesbian or gay. The teenagers then often have a choice whether to go home or find some supportive accommodation with the Trust.

The Trust was set up by Cath Hall in memory of a homeless Manchester gay teenager, Albert Kennedy, who killed himself.

VEGGIES

CATERING CAMPAIGN (NOTTINGHAM)



Tasty Wholesome Snacks

LUNCHTIMES AT
CLINTON STREET WEST

Steve and Tony welcome everyone to the

GREEN LANE GALLERY

Cosy Atmosphere Pool Room
Bar Snacks Real Ales
Full Sunday Lunch Car Park

Opening Hours

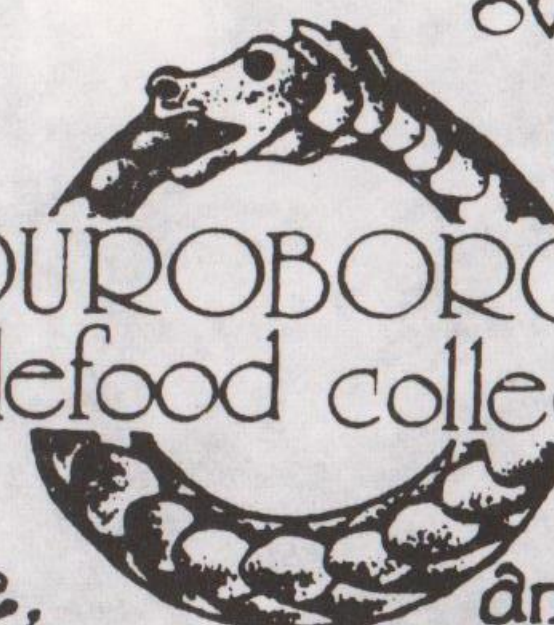
Mon-Thurs 8-11pm; Fri 12-3pm, 7-11pm;
Sat 11-11pm; Sunday 12-3pm, 7.30-10.30pm.

Green Lane Gallery, Green Lane, Derby
(next to Little City Car Park)
Tel Derby 368652

For a wide range of: vegetarian & vegan foods, organic produce, baked food, plus a friendly service, advice and information.

over 170 herbs for culinary & medicinal use, bio-degradable and cruelty-free products.

37a Mansfield Rd, Nottingham



HIZIKI WHOLEFOOD COLLECTIVE

Breakfast Cereals, Dried Fruit,
Nuts, Pulses, Flours, Spreads,
Organic Veg, Yoghurts, Pasta,
Organic Wines & Beers...

PLUS

A Wide Selection Of Vegetarian
Meals (frozen, timed and dried)
And An Enormous Range Of Fresh
Take Away Food and Bread
Delivered Daily

Open 6 Days a Week

15 Goosegate Hockley
Nottingham Tel. 505523

HYSON GREEN WHOLEFOODS

Mon-Sat 9.30-6
(Thurs/Fri til late)

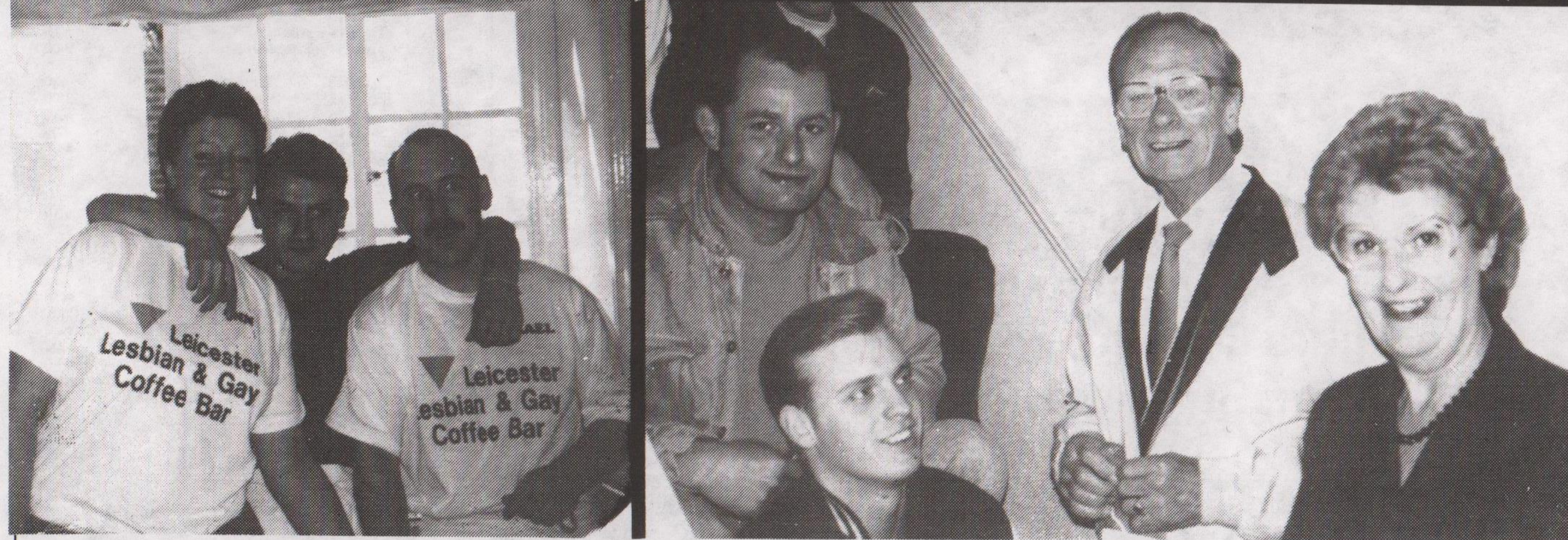
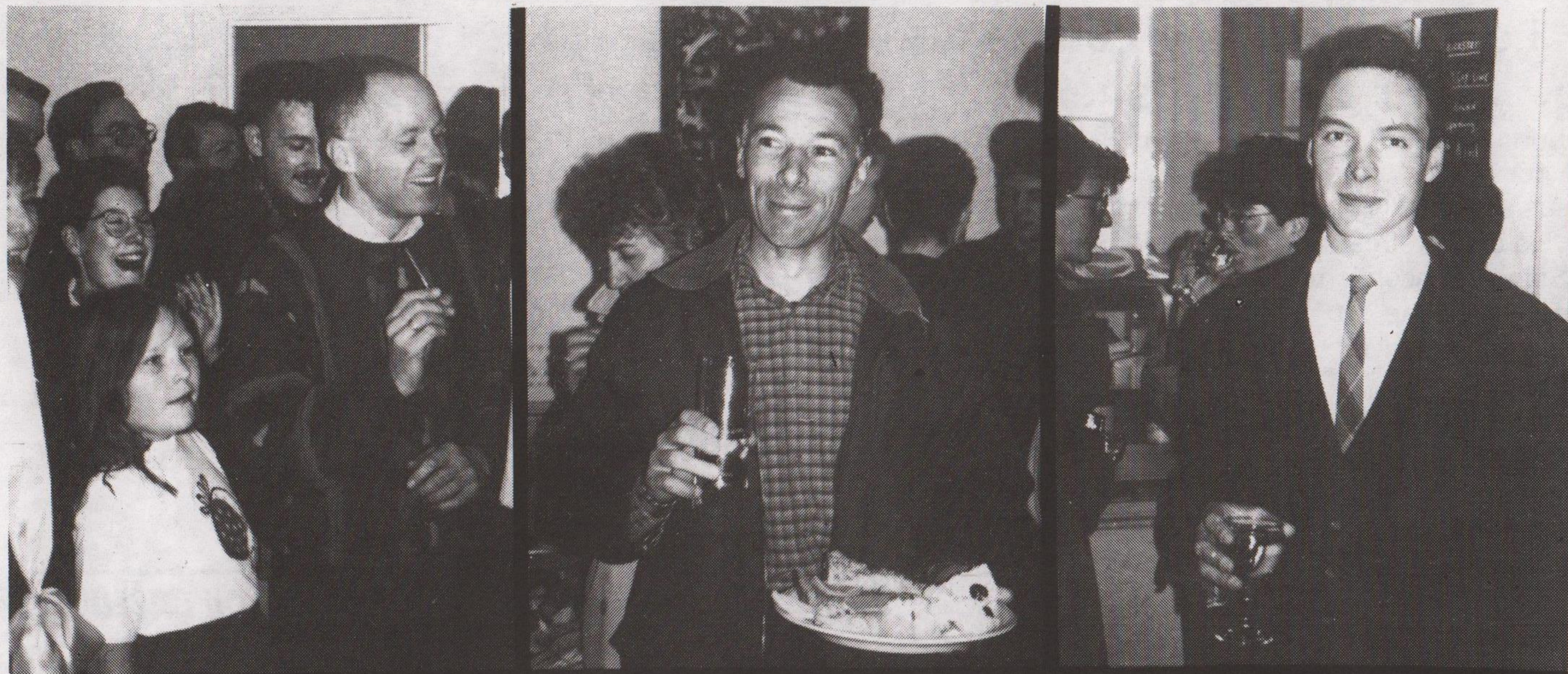
WE SELL ENVIRONMENTALLY
SAFE AND CRUELTY FREE
CLEANERS AND TOILETRIES, A
GOOD SELECTION OF HERBS
& SPICES, FRESH BREAD AND
A WIDE SELECTION OF SNACK
FOODS

ORDERS TAKEN
72 RADFORD ROAD
702056

The METRO CINEMA

June			
Fri 1	Sea Of Love (18)	6.30	
Fri 1	Cinema Paradiso (PG) S/T	9.00	
Fri 1	Sea Of Love (18)	11.30	
Sat 2	Sea Of Love (18)	6.30	
Sat 2	Cinema Paradiso (PG) S/T	9.00	
Sun 3	The Body In Extremis Prog.1	6.00	
Sun 3	Cinema Paradiso (PG) S/T	8.00	
Tues 5	Cinema Paradiso (PG) S/T	8.30	
Wed 6	Sea Of Love (18)	6.30	
Wed 6	Cinema Paradiso (PG) S/T	9.00	
Thur 7	Sea Of Love (18)	6.30	
Thur 7	Cinema Paradiso (PG) S/T	9.00	
Fri 8	Always (PG)	6.15	
Fri 8	Strapless (15)	9.00	
Sat 9	Always (PG)	6.15	
Sat 9	Strapless (15)	9.00	
Sun 10	The Body In Extremis Prog.2	6.00	
Sun 10	Strapless (15)	8.00	
Tues 12	Karen Ingham	7.00	
Tues 12	Strapless (15)	9.00	
Wed 13	Always (PG)	6.15	
Wed 13	Strapless (15)	9.00	
Thur 14	Always (PG)	6.15	
Thur 14	Strapless (15)	9.00	
Fri 15	The War of the Roses (15)	6.30	
Fri 15	Roger and Me (15)	9.00	
Sat 16	The War of the Roses (15)	6.30	
Sat 16	Roger and Me (15)	9.00	
Sun 17	The Body In Extremis Prog.3	6.00	
Sun 17	Roger and Me (15)	8.00	
Tues 19	Roger and Me (15)	9.00	
Wed 20	The War of the Roses (15)	6.30	
Wed 20	Roger and Me (15)	9.00	
Thur 21	The War of the Roses (15)	6.30	
Thur 21	Roger and Me (15)	9.00	
Fri 22	Steel Magnolias (PG)	6.30	
Fri 22	Vincent and Theo	9.00	
Sat 23	Steel Magnolias (PG)	6.30	
Sat 23	Vincent and Theo	9.00	
Sun 24	The Body In Extremis Prog.4	6.00	
Sun 24	Vincent and Theo	8.00	
Tues 26	50 Years Ago: Sing As We Go (U)	7.00	
Tues 26	Steel Magnolias (PG)	9.00	
Weds 27	Steel Magnolias (PG)	6.30	
Weds 27	Candy Mountain (15)	9.00	
Thur 28	Steel Magnolias (PG)	6.30	
Thur 28	Candy Mountain (15)	9.00	
Fri 29	Born on the 4th of July (18)	6.30	
Fri 29	Monsieur Hire (15) S/T	9.30	
Sat 30	Born on the 4th of July (18)	6.30	
Sat 30	Monsieur Hire (15) S/T	9.30	

GREEN LANE : DERBY ON 40170



Sixty Gay Men Go Mad in Scotland Every Year!

Picture sixty gay men from all walks of life living together for a week in a large country house. The setting is Lauriston Hall in South-West Scotland and twenty gay men came to the first Week in 1985. Last year it became so popular that there were three separate Weeks, including one in France, each attracting 60 men, both members and non-members of The Edward Carpenter Trust, the organisation behind these get-togethers.

Said one member, Eddie, on his first Week last year: "You could have any sort of week you wanted. Some people spent the whole week having sex and using the sauna, others just lounged around or swam in the loch, whilst other people were high because they'd had so many workshops on holistic massage!"

"What sets it apart from how quite a lot of gay men spend much of their time is that you've got 60 gay men who are together all day, all evening and, since we're in dormitories, all night too. It's a real contrast from the dehumanisation of the club scene and standing around on your own."

Food is almost entirely vegetarian and you can specify particular diets when you apply; the staff at Lauriston Hall are used to dealing with all sorts. They do the domestic planning and organisation, but visitors are asked to help with preparation of food or washing-up, in moderation.

If you're interested in the Gay Men's Weeks, the dates for 1990 are May 31st-June 10th and July 19th-26th. Fees are on a sliding scale: 7 days for £55-£120; 10 days for £80-175. For bookings and info, send and SAE to GMW, Ritherdon Road, London SW17 8QE.

Leicester Coffee Bar Facelifted

Michael Cashman opened the newly-refurbished Leicester Lesbian/Gayline Coffee Bar last month. As you can see ('photos opposite), the place was packed out and everyone seemed to enjoy the food and company. Gone are the naff striplights and in their place are tastefully angled concealed lights and spots that pick out the waist-high dado rail, on top of which is hand stencilled triangle motif around the walls. Salmon pink and jade are the predominating colours, with a grey floor covering.

Steve and Diane, the paid co-ordinators of the centre, believe the money to be well spent. "Don't we deserve a nice welcoming place to socialise in - why shouldn't we have the best that's going?", they say.

The verdict of the users on this open day was enthusiastic for the new-look, designed by Nottingham-based interior decorator Roman Misiewicz (that's him in the waistcoat and tie!).

In the pictures opposite are some of the members of the Parents Group, who are about to set up Family Pride, a national network of parents of lesbians/gays. Any parents needing support themselves, the Leicester Parents Group would be glad to help out. You can reach them via the helpline on (0533) 550667 Mon-Fri, 7.30-10.30pm.

1. The Body - In Extremis

Un Chien Andalou (Fr 1929) Bunuel 17 mins
The classic surrealist film of Bunuel and Dali contains the most shocking and memorable attack on the body in cinema - the slicing of the woman's eye with a razor. However the whole film is a celebration of the body's relationship to sexual desire (the rape sequence) in its surrealistic theme of 'mad love' and physical fragmentation (the severed hand in the street). A forerunner of such recent films as *Blue Velvet*.

Pas de Deux (Can 1968) Norman McLaren 14 mins
In contrast the late McLaren's beautiful and ever popular filmic essay on the body in motion, using techniques by which a dancer's body is arrested in flight, evokes a pathos and romanticism which hints at McLaren's own homosexuality.

Alone (UK 1963) Steve Dwoskin 13 mins
Dwoskin's film is a Warholian study of a girl alone with her body. The voyeurism of its fixed camera captures human isolation and the extreme physicality of desire.

Window Water Baby Moving (USA 1959) Stan Brakhage 13 mins
Brakhage's classic groundbreaking film of the pregnancy and labour of his wife, Jane, and the birth of their child merges a poeticism of light and movement (in his characteristic fast editing and restless camera movement) with an unnerving frankness which at the time was (and is still) disturbing. The body caught in the moments of childbirth.

Meditations on Violence (USA 1948) Maya Deren 10 mins
A relatively unknown film by Deren which eschews her narrative experiments and in a more purist vein indulges her love for dance. The gaze of a woman film-maker on a male dancer is still fairly rare and the sexuality expressed by the dance and reinforced in her editing is unmistakable.

Coalface (UK 1935) Alberto Cavalcanti 11 mins
The sheer physicality of some kinds of work is often neglected in filmic studies of the body, yet in mines, factories and fields people suffer extreme forms of physical labour. In Cavalcanti's famous film we see almost naked miners in the cramped oppressive conditions experienced still by many in the world.

2. The Desiring Machine

Chant d'amour (Fr 1950) Jean Genet 23 mins
A hard uncompromising and now classic film of sexual feelings between men in a prison, depicting fellatio, masturbation, voyeurism and the exquisite torture of unsatisfied desire.

Kiss Film (Ger 1988) Birgit and Wilhelm Hein
Since the 60s, Birgit and Wilhelm Hein have persistently represented the hard edge of German avant-garde cinema. Kiss Film has a gentle eroticism constructed through repetition and found-footage material.

Between (Ger 1989) Claudia Schillinger 10 mins
The film represents a self-questioning by Schillinger of her own sexuality using sexual violence, voyeurism and masturbation as a means of posing, among other things, the question of the true being of a woman.

Imaginary II (UK 1989) Moira Sweeney 4 mins
Taking eroticism as the revolt of the instant against time, this diary is part of an ongoing desire to express intimacy through rhythmical hints of experience. (MS)

Descent of the Seductress (UK 1986) Jean Matthee 10 mins
The idea of cinema as a machine coincides with that of desire as a forever unsatisfied fantasy scenario. In this film, these 'machines' coincide quite ironically through an image of Marilyn Monroe, the ultimate contemporary object of desire, forever constructed, circulated, consumed but never possessed. Matthee uses repetition and sumptuous colour to express these ideas.

Fuses (USA 1965-8) Carolee Schneeman 25 mins
By interweaving and compounding images of sexual love with images of mundane joy (the sea, a cat, window-filtered light) Schneemann expresses sex without the self-consciousness of a spectacle, without an idea of expressivity. (Gene Youngblood)

The METRO CINEMA
GREEN LANE - DERBY ON 40170

3. Death and the Lower Bodily Functions

The Ossuary (Czech 1970) Jan Svankmajer 10 mins
A document of the Baroque macabre as Svankmajer records with impeccable rhythms (and a wonderful jazz score) the curious Sedlec church decorated by thousands of human skulls and bones from the Hussite wars and the Great Plague. A perfect example of the surrealist object trouvé, an innocent reminder of mortality and a homage to humanity's power to transform the most unlikely material into the exotic.

Upstairs Inside (Can 1984) Kathleen Maitland-Carter 10 mins
The film represents a sophisticated conjunction of a woman's private obsession with the taboo of menstruation, and images of women which reveal while they disguise the power of blood and its connection to violence and sexuality.

K (UK 1989) Jayne Parker 12 mins
I bring out into the open all the things I have taken in that are not mine and thereby make room for something new. I make an external order out of an internal triangle. (JP) The use of a disturbing image of oral disgorgement represents primal desires and a metaphor for the self as inside/outside.

Reel III 16/67 (Aus 1967) Kurt Kren 10 mins
Kren's creative documentation of some of the 'happenings' of the Destruction in Art performances of Otto Mühl and Gunter Brus where the use of the body's so-called lower functions are central to the idea of forcing the boundaries of art.

Dimensions of Dialogue (Czech 1982) Jan Svankmajer 15 mins
Notions of cannibalism and physical violence - political, sexual and familial - are explored here using astonishing animation techniques in Svankmajer's classic and pessimistic comment on human nature.

The Act of Seeing With One's Own Eyes (USA 1971) Stan Brakhage 32 mins
probably the most devastating and most terrifying film essay on death in its most shocking and disturbing site - the autopsy room. In true Romantic spirit, Brakhage attempts a film poetics of the forbidden zone of medicine where the body is cut apart in search for the cause of its death and where perhaps only the camera can gaze.

4. Tales of Sado-Masochism

Mano Destra (Switz 1985) Cleo Uebelmann 53 mins
Images of female sado-masochism where "time almost appears to stand still, is physically felt. Cleo, as Domina, waits in extreme calmness and composure; she watches over her victim, who had handed herself to her". Meaning is located in the slightest movement and the frozen moment of the masochist's pleasure as the scenario presents itself in the long held static camera.

Kali Film (Ger 1988) Birgit & Wilhelm Hein 12 mins
A deceptively subtle montage of sadistic scenes from low-budget Hollywood exploitation movies depicting women enacting acts of breathtaking violence against men. A liberating film which captures women fighting back but undercut with a sadness (achieved through the soundtrack).

Le Sexe Enrage (Belg 1970) Roland Lethem 16 mins
Anarchic, powerful and bizarre images from the master of the bad-taste Grand Guignol. A bourgeois client is transformed into a mouse and cannibalised by a liberated woman. A political film which uses sadism as a metaphor for anger and freedom. Dedicated to the Belgian censor.

Film notes and essay: Mike O'Pray
For support, ideas and practical assistance, many thanks to Moira Sweeney, Tony Warcus and Tom Heslop at the London Film-makers Co-Op, Tim Hightstead at the ICA, London, Birgit Hein, Kathleen Maitland-Carter, David Curtis, Al Rees, Simon Field and to Margaret Hennessy and Erich Sergeant at the BFI, Todd Haynes and all the film-makers involved.

Heineken Music BIG TOP



25th-28th May 1990
Nottingham Festival
Wollaton Park, Nottingham

Friday 25th May · 6-11pm
Tom Robinson Band
Ruby Blue
Alias Ron Kavana
FREE EVENT - ARRIVE EARLY!

Saturday 26th May · 6-11pm
Gil Scott Heron
Microgroove
plus special guests
FREE EVENT - ARRIVE EARLY!

Sunday 27th May · 1-10pm
"WORLD MUSIC DAY"
John Chibadura
& The Tembo Brothers
Toumani Diabate
Abdul Tee-Jay & Rokoto
Vasmalom · Geet
Wholesome Fish
FREE AFTERNOON AND EVENING EVENT!

Bank Holiday Monday
Afternoon 28th May · 1-6pm
"SUMMER IN THE CITY"
Desmond Dekker
Geno Washington
Big Town Playboys
The Great Pagoda Dream Factory
ITV Telethon Fun Day
FREE AFTERNOON EVENT!

BEER TENT · CATERING · CAR PARK
Information 0602 470661

NOTTINGHAM OUTHOUSE MOVES TO SET UP CENTRE

A group calling itself The OutHouse Project (you know, those people who run a Pride coach every year) envisages setting up a Lesbian and Gay Centre in Nottingham, sometime in the very near future. A cafe is the main priority, then a TV room, library, creche and function room for discos etc will be included. All this depends on two things - the size of the premises, and money.

When it was clear Nottingham City Council was not prepared to do anything apart from providing a talk shop, the Project decided to begin small and rent premises for a coffee bar. This is expected to be run by the profits made from sales and donations from members of the Group.

One of the most exciting prospects is the possibility of joining forces with a lesbian and gay housing Co-op. The idea is that housing Co-op members will buy a large building and let out part of it to The OutHouse Project. A national group, the Radical Roots Network, which originated in Birmingham, now has offshoot organisations which run more than ten buildings with a cafe and a ten bedroom rural house among them.

The Project is always looking for new members to help fly the pink-and-black flag in Nottingham. For further information, contact: The OutHouse Project, Box 11, 118 Mansfield Road, Nottingham, NG1 3HL, or 'phone Nottingham Gay Switchboard (0602) 411454, Mon-Fri 7-10pm.

Student Wins OutHouse Logo Competition

Former Trent Polytechnic student, Andy Frith, a graphic designer with the BBC in Manchester, won the OutHouse Project's Logo competition. The OutHouse Project is the other name for Nottingham's Lesbian and Gay Community Centre Co-operative Society (Try saying that when you're pissed! - Ed.).

Twenty-seven year old Andy was thrilled when he heard that he had won and immediately set to work to design a poster. It was a close run competition and the OutHouse would like to thank all those who took so much time and effort to get their ideas on paper, especially Tony Vickers, Helen Birch, Chris Newcombe, Allan, Patrick and Ant.

Lesbian/Gay Rights Motion at NUT Conference

Leicester teacher Mark Smith was the proposer of a motion at the National Union of Teachers' Conference in Bournemouth last month, when he tabled a motion calling for the restoration of the Equal Opportunities Department at the NUT head offices in London. Although Leicester City branch of the NUT put forward the conference motion, it did not get debated through lack of time. However, Mark says that a number of lesbians and gays at the conference met regularly during the week and there were a number of gay badges in evidence. The seconder of the motion was hassled in his local paper in Westminster and this led the President of the NUT, Barbara Lloyd, to condemn this. She also restated the union's anti-discrimination policy and was "mildly supportive".

TELEPHONE DATING

Ring Telephone Dating now and listen to people who want to meet new friends and companions.

The lines are open 24hrs a day 7 days a week.

GUYS FOR GUYS	
FROM INSIDE LONDON (01 AREA)	0077 775 207
OUTSIDE LONDON	0898 400 917
	0898 400 918
MIDLANDS (ALL AREAS)	0898 400 927
	0898 400 928
FROM INSIDE MANCHESTER (01 AREA)	0077 775 207
OUTSIDE MANCHESTER (01 AREA)	0898 400 967
	0898 400 968
GIRLS FOR GIRLS	
(ALL AREAS)	0898 400 937
	0898 400 938

25p (incl. peak 16.30p) (standard peak) per min. inc. VAT

TELEPHONE DATING LIMITED **FREECALL 0800 269 946**

More about Pride

The "new, high-profile route through central London" will take the annual parade from Victoria Embankment, up Northumberland Avenue, past Trafalgar Square, down Whitehall, past the Houses of Parliament, across Westminster Bridge and down Kennington Road to Kennington Park, the venue of the Festival for the third year running. Organisers have negotiated

Nottingham Media Centre 14 Broad Street Tel: 410553

Stephen Frears

The Festival also celebrates the work of director Stephen Frears. From Leicester to Los Angeles, his career as a film-maker has embraced both television drama and the cinema. His subjects have been various - thriller, satire, melodrama, comedy - but the quality has been constant. When asked to name the most over-rated and the most under-rated of contemporary film directors, Stephen Frears nominated himself - on both counts!

Gumshoe

Saturday 26th May 6.00pm
Dir: Stephen Frears. Scr: Neville Smith
Albert Finney, Billie Whitelaw
UK 1971, 84 minutes PG

Frears' cinema debut - an affectionate parody of private eye movies (particularly *The Maltese Falcon*), with Finney superb as the Manchester bingo caller yearning for Las Vegas and his crooked brother's wife.

The Hit

Sunday 27th May 6.00pm
Dir: Stephen Frears. Scr: Peter Prince
John Hurt, Terence Stamp
UK 1984, 98 minutes 18

A thriller in style and tempo, the film also demonstrates how the ruthlessness of the '80s has replaced the mystical idealism of the '60s. Stamp is the crook turned supergrass escorted from idyllic retreat to nemesis by Hurt's amoral hit-man.

My Beautiful Laundrette

Saturday 2nd June 6.00pm
Dir: Stephen Frears. Scr: Hanif Kureishi
Daniel Day-Lewis, Gordon Warneke
UK 1985, 97 minutes 15

A witty and outrageous parable of lost innocence in London's Pakistani community, but the real strength of the film is its vision - cutting, compassionate, hilarious - of what it means to be Asian, and gay, in Thatcher's Britain.

Prick up your Ears

Sunday 3rd June 6.00pm
Dir: Stephen Frears. Scr: Alan Bennett
Gary Oldman, Alfred Molina
UK 1987, 110 minutes 18

The lurid, engaging and ultimately tragic story of gay writer Joe Orton and his mentor lover-murderer Kenneth Halliwell. Based on Orton's diaries, Bennett's script is poignant and witty, with Oldman and Molina sparkling under Frears' confident direction.

Sammy and Rosie Get Laid

Monday 4th June 7.30pm
Dir: Stephen Frears. Scr: Hanif Kureishi
Shashi Kapoor, Frances Barber, Roland Gift
UK 1987, 101 minutes 18

The follow-up to *My Beautiful Laundrette*, this provocative attack on '80s Britain is snappily directed and tartly acted. Following the mishaps of an Asian politician seeking refuge in the land he once regarded as a haven of peace (now 'twinned' with Beirut), the film draws analogies between political and sexual freedom. A funny, biting satire.

Dangerous Liaisons

Friday 8th June 7.30pm
Dir: Stephen Frears.
Scr: Christopher Hampton
Glenn Close, John Malkovich, Michelle Pfeiffer
USA 1988, 120 minutes 15

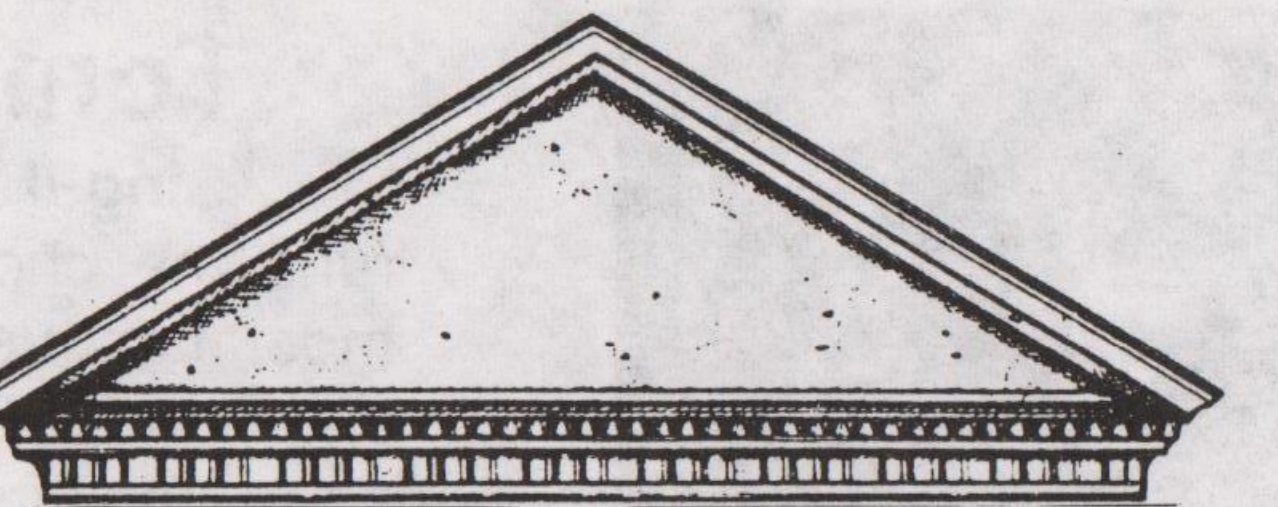
Drawn from Choderlos de Laclos' eighteenth century novel of erotic double-dealing and deceit among the French aristocracy, Hampton's screenplay has some delicious and elegant exchanges.

Plus Stephen Frears in conversation with Adrian Wootton.

As the climax to the Stephen Frears Season, Frears himself follows the evening's screening with a conversation on stage with Adrian Wootton, Director of the Nottingham Media Centre and a long time friend of Stephen Frears.

Tickets: £2.50, concessions £2.
Tickets are bookable in advance for the film and conversation from the Victoria Centre Box Office only.

Sponsored by EVERSHED & BOND
A MEMBER OF EVERSHED



For those who appreciate the
value of good design....

We did it for Leicester Lesbian &
Gayline - Perhaps we could do it for
you?

Complete design, building
and decorating services for
your home or your business

We welcome enquiries for the smallest
or the largest projects

Call us on (0602) 455658

Our advice is free of charge and without obligation



Teenagers and Sexuality

LESBIAN & GAY AWARENESS WORKSHOP

An excellent workshop for Social Workers,
Residential Care Staff and Foster Parents.

£85 inclusive
June 6th
Manchester

For more information
and immediate
booking contact:
Cath Hall: 061 998 0608

mushroom

B.O.O.K.S.H.O.P

Newly in:

Spartacus Travel Guide 1990

£14.95

10 Heathcote St, Nottingham
NG1 3AA Tel: 0602-582506

THE AMALFI LICENSED HOTEL

19 & 21 Eaves Street,
Blackpool 0253 - 22971

Booking now for Whit, Summer
& Illuminations

Open All Year

Marlene & Helen welcome you for a comfortable stay - 1 minute from the seafront
5 minutes from the **Flamingo**
(concessionary passes available), Lucy's
and 501 bar

Bed & Breakfast;
EVENING MEAL OPTIONAL

Short stays welcome

Les & Graeme
invite you to

The PINEAPPLE INN

Leicester's new gay venue
27 Burleys Way, Leicester
Opposite Bus Station

Mon-Sat 7-11pm

Sun 12-3; 7-10.30pm

Disco Wed-Sun nights

Sun 12-3: free hot bar snacks

From 26th May, open from

midday - 11pm, Saturdays only

Tel: 0533 623384

More about Pride continued

expansion to the area available for Festival use. For the first time, there will be an eleven p.m. late licence and a fire-works display, for which sponsorship is being sought. Organisations and community groups are being invited, for the first time, to have their own marquee on the Festival site. And Chris Gable of the organising committee is offering to act as go-between for organisations which, for financial or other reasons, wish to spare space available for marquees or stalls. The Festival will be the eighteenth such event and this year celebrates the twenty-first anniversary of the gay uprisings at the Stonewall Inn in New York in 1969.

CANDLELIGHT MEMORIAL

co-ordinated by

The Terrence Higgins Trust

bank holiday monday

28 may

the 1990 interfaith service
and candlelight memorial
for everyone affected
by HIV & AIDS

7pm

st. martin in the fields

8.45pm

travellers square

non-drip candles or flashlights only please

helppline 071-242 1010

for confidential advice, counselling and information

