



PRIDE 90

Plans are well under way to make Pride 90 the most successful ever. The London Lesbian and Gay Pride celebrations will reach their culmination on Saturday 30th June with the annual march and festival. With regular attendances now well over 30,000, the London event is the biggest of its kind in Europe. This year's parade with music and decorated floats will leave Victoria Em-

bankment at 2pm on the Saturday afternoon, moving up Northumberland Avenue, past Trafalgar Square, down Whitehall, past the Houses of Parliament, across Westminster Bridge and down to South London's Kennington Park. The carnival in the Park, occupying more space than ever before, will get into full swing from 3pm, and for the first time will continue until 11pm.

Belgian singer Mathilde Santing, 60's superstar, long-time Pride darling Sandie Shaw and the consistently hilarious comedy duo Parker and Klein are among the stars who will appear on the main stage in the Park.

To get you there, coaches are leaving from Nottingham and Leicester. Tickets from Nottingham are bookable at Mushroom Bookshop now, £3.00, for a 9am departure, leaving London at 11.15pm (after the show). The Leicester coach is bookable through Lesbian/Gayline, 0533 550667, Mon - Fri, 7.30 - 10.30pm.

If you want to be part of the Pride spirit, go by coach, but book fast!



Free Entry to The Street

Leicester's Streetlife club offers free entry every Friday night up to 11pm. After 11pm, you pay. So why not try the pub next door and slip in before 11pm, they say it's very popular.

HELPLINES

NOTTINGHAM GAY SWITCHBOARD, Mon-Fri, 7-10pm, 411454
 NOTTINGHAM LESBIAN LINE, Confidential help/advice for lesbians, Mon & Wed, 7.30-9pm, 410652
 NOTTM AIDS HELPLINE, Worried about AIDS? Call us, Mon-Fri, 7-10pm, 585526, Accurate info, reduces anxiety
 LEICESTER LESBIAN/GAYLINE, Mon-Fri, 7.30-10.30pm, 550667
 DERBY FRIEND, Weds, 7-9.45pm, 49333 or write c/o Derby CVS, Kings Chambers, Queens Street, Derby
 DERBY AIDSLINE for help and confidential advice, tel free on 0800-622738, Mon-Fri 7-9pm, Thurs 2-4pm
 DERBY LESBIAN LINE, Wednesdays 7-9pm, 414111 or write c/o PO Box 140, Derby
 GAY CHRISTIAN MOVEMENT (LGCM) Paul (0602) 255514 or Sheila (972) 23687. Details: Paul Smith, 35 Bramcote Rd, Beeston, Nottingham NG9 1AJ
 NOTTINGHAM UNIVERSITY LESBIAN & GAY PHONELINE, Termtime Mondays 8pm-midnight, on campus call internal x3474
 ALCOHOLICS ANONYMOUS GROUP FOR GAY PEOPLE, 1st Tuesday of each month, 417100, Room 7a, ICC, 61b Mansfield Rd, Nottingham
 LOUGHBOROUGH LESBIAN & GAY GROUP, Tuesdays 7-9pm, (0509) 610581, all welcome

Issue Number 5
June 1990

OUTRIGHT

Gay Freesheet for the East Midlands

FREE!

Rights of Gays defended by Union

Nottingham University's Lesbian, Gay and Bisexual Society achieved a resounding victory at a union council meeting last month, when their motion - on lesbian, gay and bisexual rights - was carried by a large majority of votes.

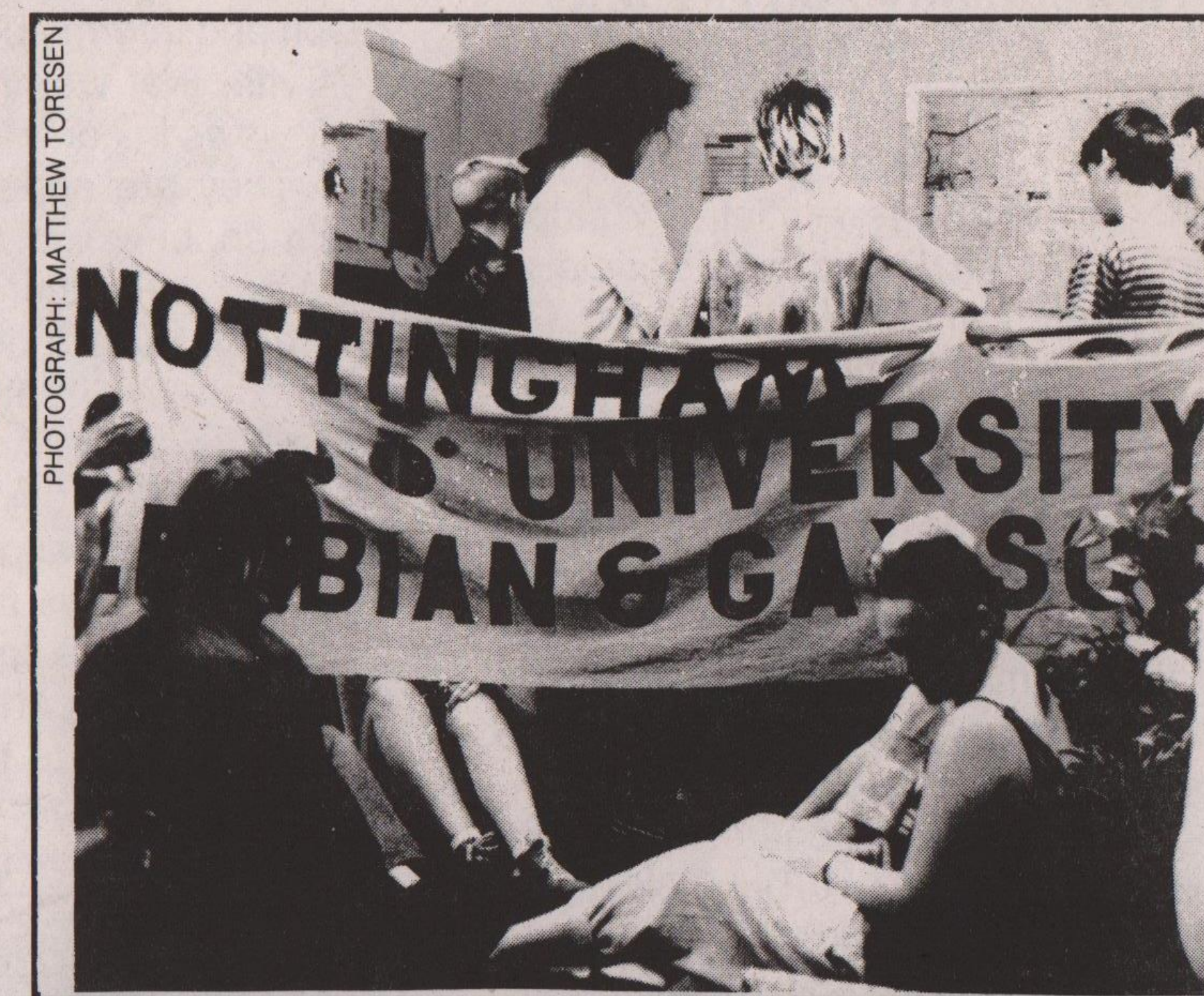
By carrying the motion, the union acknowledged that love and sex between people of the same sex are as acceptable, valid and healthy as between people of opposite sexes, and that non-heterosexuals are scapegoats for accusations over the transmission of AIDS/HIV, when it is spreading faster in the heterosexual community.

The society will now be funded as a welfare service, with a post created for a non-heterosexual, non-executive person, who will represent non-heterosexuals. The new

office holder will ensure that any harassment of non-heterosexuals by other union members is dealt with by a strict disciplinary procedure and will liaise with a selected member of the union's executive committee, whose responsibilities will involve campaigning for lesbian, gay and bisexual rights.

This move was slammed by opposers to the motion as a "cynical plot by the left" to gain a foothold in union politics. But Richard Edmonds, NUS secretary and Lesbian, Gay and Bisexual Society member, was adamant that the object of the demands was merely to make sure that there is someone with whom the union can liaise.

Meanwhile, gay and lesbian students were celebrating what they regard as a significant victory and assertion of their rights.



PHOTOGRAPH: MATTHEW TORESEN

Trade Offs for Protesters

The recent, highly successful occupation of the Thompson-owned Nottingham Herald & Post newspaper by Nottingham Lesbian & Gay Group resulted in two positive spin-offs. Editor Mike Astill agreed to print an unedited statement of similar length to the offending article produced by their columnist June Wall. This statement, which appeared in late May, said, amongst other things: "Lesbian and gay relationships are as diverse, sincere, fulfilling and exciting as those of our heterosexual counterparts. Young people should be encouraged to determine and express their

own sexualities, and this can only happen if they encounter respect and support rather than lies and prejudice disguised as false concern."

And, more seriously for the paper, the Nottinghamshire Welfare Rights Service, on reading the offending piece, withdrew a substantial amount of planned job advertisements, despite pleas to the Director of the Service from the paper's advertising manager.

"This just goes to show that direct action can have an immediate effect and produce positive results", said Geoff Whittaker, a member of the Nottingham Lesbian & Gay Group who zapped the newspaper.

Mushroom Bookshop has a vacancy for a full time worker

Please pick up a detailed information sheet from the shop.

Women and black people are particularly encouraged to apply as both groups are under-represented in the collective.

Applicants must be in broad agreement with the areas covered by the shop. Note: since its formation, all the Mushroom workers have been vegetarian, a tradition we'd like to retain.

Closing date: 29th June.

Mushroom Bookshop is Nottingham's radical and independent bookshop - worker controlled since 1972.

MUSHROOM BOOKSHOP, 10 HEATHCOTE STREET, NOTTINGHAM, NG1 3AA 0602 582506

Asquiths presents

Once a month

Lesbian & Gay Night

Monday 25th June
10pm - 2am

Last entrance midnight

at 22 Silver
Street, Leicester
Admission £2

Enquiries: 0533 701312

SMALL ADS

PINK INK is a group of lesbian and gay writers in the East Midlands who meet together and offer supportive discussion and mutual inspiration. For details, phone 626995 or write to Box 28, Mushroom Bookshop, Heathcote Street, Nottingham.

CARLTON TAROT READER, Dwale, Nottingham 876451; Gay people particularly welcome.

MORRIS TRAVELLER FOR SALE, H Reg, 8 months' MOT. £600 ono. 0602 780124 (eves). NOTTINGHAM LESBIAN LINE are holding a dance in early July. Any woman who would like to attend, please phone the Lesbian line for details.

OUTRIGHT

Advertising 0602 472668

July copy deadline: 30th
June 1990

Outright is published monthly
by Naff Co-operative Ltd,
PO Box 4, West PDO,
Nottingham NG7 2DJ

DERBY AIDSLINE

Worried/confused
about HIV/AIDS?

For confidential advice and
information, phone FREE on
Derby Aidsline

0800 - 622738

Mon - Fri 7-9 pm
Thurs 2-4 pm.

Inside
This Issue...

* *ACTivist Special - See Centre Pages*

LEICESTER

To stop the spread of HIV and AIDS, and to help people who are already affected, researchers seek non-scene gay men for short, confidential telephone interviews about services and information on safer sex, HIV and AIDS. Ring: Kevin on Leicester 854720

New initiative on HIV and AIDS in Leicester

Leicester City Council, with funding from Leicestershire Health Authority, is taking a new initiative to stop the spread of AIDS and help people who are already affected.

Over the summer, Framework, an independent group of researchers, is undertaking a confidential survey throughout the City into attitudes towards safer sex, HIV testing and services for gay men with HIV and AIDS. This information will be used to create a three-year action plan with the co-operation of all relevant Agencies.

The two researchers, from Framework, Kevin Ford and Tim Pickles, have devised a short anonymous questionnaire which will soon appear in local venues. They will also be approaching gay groups in Leicester to carry out more detailed and confidential face to face interviews with willing volunteers.

Tim Pickles, who is himself gay, said: "we are very keen to involve gay men in this survey so that they can put forward ideas and suggestions to help us. In this way, the gay community can influence and have some control over the shape of future action".

The researchers are particularly keen to contact men who do not usually use the commercial gay scene or organised gay groups. Kevin Ford said: "these men have always been the most difficult to

PRIDE 1990 CARNIVAL PARADE SATURDAY 30TH JUNE ASSEMBLE VICTORIA EMBANKMENT

1PM FOR 2PM
Nearest tube Embankment and follow the crowds!
The new assembly point means a shorter march and more fun in Kennington Park with open stage, 200 stalls, 5 bars, disco marquees, cabaret marquees, creche, cloakroom, and non stop entertainment 'til 10.30pm

For details on how you can get to Pride by coach from Nottingham or Leicester, see the back page.

reach and inform about HIV and AIDS - it is vital that we find ways of getting their views in confidence".

They are appealing for Leicester gay men, bi-sexual men and men who have sex with other men, and who are not regular users of the gay scene to contact them. In an advert inside this paper they are asking for such men to 'phone them in Leicester and to take part in a short, anonymous interview. The interview will be conducted over the 'phone and is completely confidential. The final report from the research should be given to the City Council by the end of the year.

For further information contact:

Kevin Ford 0533 550713

Tim Pickles 0360 22484

LEICESTER WOMEN'S HOUSING ACTION

(formerly Leic Women & Homelessness Group)

TRAINING FOR WOMEN IN THE VOLUNTARY AND STATUTORY SECTOR

LWHA are running another series of courses starting in June 1990. The aims of the programme are:

- to give women opportunities to learn skills which relate to their work, to share and resolve workplace difficulties in an atmosphere of trust.
- to provide training for which women have asked.
- to provide women-only courses which are high quality and local.

1990 Courses			
Supervising workers	19, 20 July	120.00	Jeanne Nadeau
Dealing with Conflict	19, 20, 21 Sept	190.00	Jeanne Nadeau
Fundraising for Larger Projects	3, 4, 5 Oct	190.00	Gary Wiltshire
Assertive Communication	25, 26 Oct	120.00	Jeanne Nadeau
Managing Time	13 Dec	65.00	Shirley Otto
Non-verbal Communication	14 Dec	65.00	Jeanne Nadeau

Last year nearly every course was full so early booking is advisable.

Each workshop will introduce a range of techniques or methods which you can take away and practise. There will be written guidelines and workbooks for use both during and after the sessions.

Further information on availability of places and an application form, contact Annette Ansell on 0533 545559 or write to 13 Welford Road, Leicester, LE2 7AD.

HIZIKI WHOLEFOOD COLLECTIVE

Breakfast Cereals, Dried Fruit, Nuts, Pulses, Flours, Spreads, Organic Veg, Yoghurts, Pasta, Organic Wines & Beers . . .

PLUS

A Wide Selection Of Vegetarian Meals (frozen, tinned and dried) And An Enormous Range Of Fresh Take Away Food and Bread Delivered Daily

Open 6 Days a Week

15 Goosegate Hockley
Nottingham Tel. 505523

Annie bows "out" in a blaze of glory

Annie Castledine, the flamboyant Artistic Director of Derby Playhouse, has prepared a theatrical feast which she hopes will please her sisters and brothers in the East Midlands before she leaves Derby for pastures new.

Her final two productions both have gay-related aspects:

she wrote, "is one led, perhaps, in the shadow, but ordered, regular, harmonious."

Yeger's play is set in a gallery showing a retrospective of Gwen John's work. It shifts cinematically back and forth between past and present, paralleling Gwen's relationship with Vera Oumancoff with that of two women, Karen and Barbara. The auditorium will be totally transformed into the gallery hung with Gwen's works (reproductions!), whilst one of the characters paints Gwen John's famous Self Portrait in Red Blouse on stage before the audience's eyes every night of the run! Theatre programmes will resemble art catalogues. **Self Portrait runs from 1 - 23 June.**

Then follows Moliere's classic of marital deceit, **School for Wives**, adapted by Neil Bartlett (pictured below), the gay enfant terrible of 90s theatre whose A Vision of Love Revealed in Sleep,

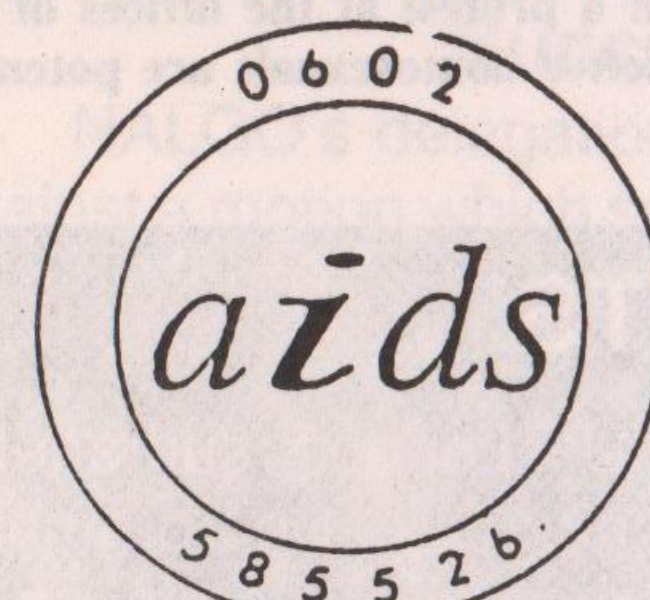
about gay Victorian painter Simeon Solomon, saw a naked Bartlett in the title role. Hot on the heels of his version of Racine's Berenice at the National, Neil directs with Annie at Derby, the dramatic coupling the world has been waiting for.

Bartlett has set the fun and games in present-day Derby. Arnold is an ageing Tory Derby City Councillor who has nurtured his young bride-to-be, Agnes, in a convent since childhood. He figures she will make the perfect wife - too stupid to show any interest in other men and too doting to care. However, he reckons without

handsome young Horace, the yuppie son of one of his old friends! And he also miserably misjudges Agnes. All is set for a farcical pantomime of campy outrageous proportions with music and gags, tomfoolery and laughter - a riot of colour, cunning and conniving with costumes to make your eyes water.

School for Wives runs from 29 June - 21 July.

THE NOTTINGHAM



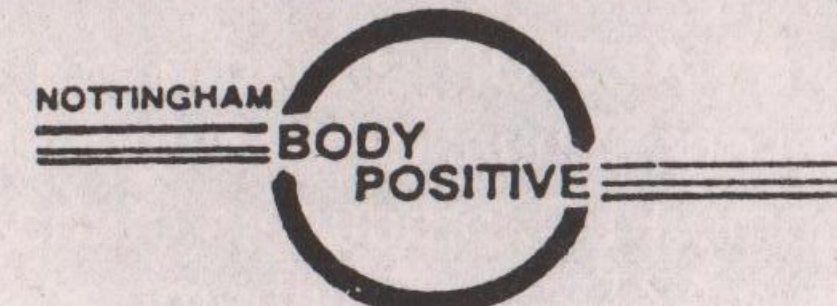
INFORMATION PROJECT

SCARED, WORRIED OR JUST CONFUSED ABOUT AIDS?

The AIDS Helpline is now open 4 nights a week (Mon-Thurs 7-10pm) for accurate, confidential advice and information and referral for support within the community. New volunteers always welcome.

For further information, write to PO Box 208, Nottingham NG1 1NZ

NOTTINGHAM BODY POSITIVE



IF YOU ARE:

- HIV ANTIBODY POSITIVE
- HAVE ARC
- OR AIDS

then why not talk to people in the same position in an atmosphere of total confidentiality.

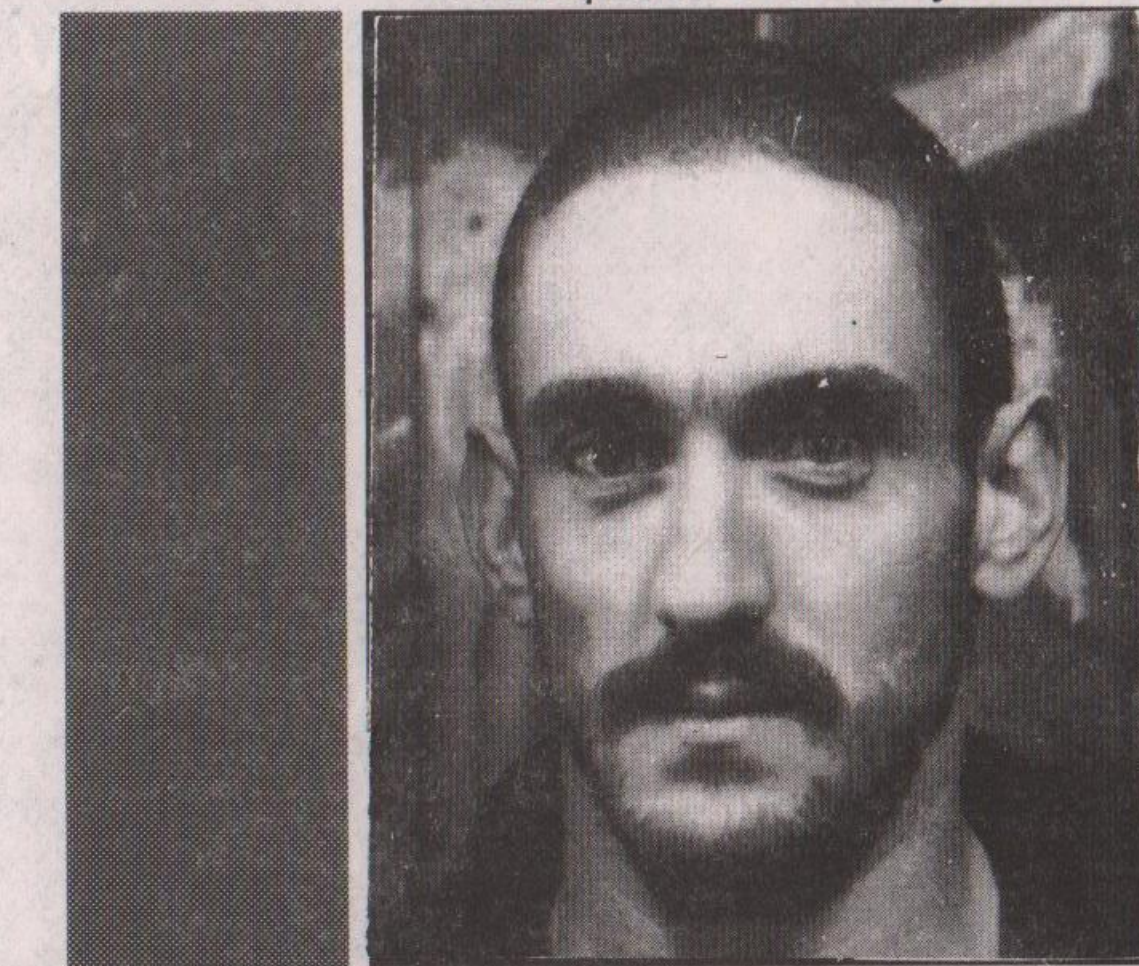
Call us on:

NOTTINGHAM 581555
Wednesdays 7 p.m.-10.00 p.m.
or write to:
Nottingham B.P.
P.O. Box 205
Nottingham NG3 3B1

Activities include:

- Support
- Information
- Fund raising
- Links to Aids Information Project and Buddies.

Self Portrait by Sheila Yeger is an intimate view of the life and works of artist Gwen John, now seen as more important than her more famous brother Augustus. Gwen John died in 1939 in Dieppe. She had collapsed and was taken to be a vagrant for she had no luggage. The whereabouts of her grave is unknown. Yet she had lived an extraordinary and passionate life behind the aura of composure, melancholy and introspection she exuded. Besides becoming the mistress of the sculptor Rodin, she also formed a series of intense relationships with women and, indeed, never drew or painted a man. A recluse who hated showing her work (there was only one exhibition during her lifetime), she painted in a tiny shed in her wild Paris garden, and became a Catholic. "A beautiful life,"



TELEPHONE DATING LTD

PO BOX 65 WA14 2PR

GUYS FOR GUYS

DIAL FROM 071/081
DIAL FROM OUTSIDE 071/081
SOUTH
MIDLANDS
NORTH

0077 775 207
0077 775 208
0898 400 947
0898 400 917
0898 400 918
0898 400 957
0898 400 927
0898 400 928
0898 400 967
0898 400 968

GIRLS FOR GIRLS

0898 400 937
0898 400 938

INFORMATION: 0898 400 946
ENQUIRIES AND RECORDING
FREECALL 0800 269 946

Calls are charged at 25p per minute cheap rate and 38p per minute at all other times.

METRO CINEMA

Sun 17	The Body in Extremis Prog.3	6.00
Sun 17	Roger and Me (15)	8.00
Tues 19	Roger and Me (15)	8.00
Wed 20	The War of the Roses (15)	6.30
Wed 20	Roger and Me (15)	9.00
Thur 21	The War of the Roses (15)	6.30
Thur 21	Roger and Me (15)	9.00
Fri 22	Steel Magnolias (PG)	6.30
Fri 22	Vincent and Theo (15)	9.00
Sat 23	Vincent and Theo (15)	2.00
Sat 23	Steel Magnolias (PG)	6.30
Sat 23	Vincent and Theo (15)	9.00
Sun 24	The Body in Extremis Prog.4	6.00
Sun 24	Vincent and Theo (15)	8.00
Tues 26	50 Years Ago: Sing As We Go (U)	7.00
Tues 26	Steel Magnolias (PG)	9.00
Weds 27	Steel Magnolias (PG)	6.30
Weds 27	Candy Mountain (15)	9.00
Thur 28	Steel Magnolias (PG)	6.30
Thur 28	Candy Mountain (15)	9.00
Fri 29	Born on the 4th of July (18)	6.30
Fri 29	Monsieur Hire (15) S/T	9.30
Sat 30	Doug Lear: The Teeny Weeny Hair Flea Show	2.00
Sat 30	Born on the 4th of July (18)	6.30
Sat 30	Monsieur Hire (15) S/T	9.30
July		
Sun 1	Africa at the Pictures Prog.1	5.00
Sun 1	Monsieur Hire (15) S/T	8.00
Sun 1	Born on the 4th of July (18)	10.15
Tues 3	The Story of Gilbert and Sullivan (U)	7.00
Tues 3	plus Ruddigore (U)	
Weds 4	DCHE BA Film Degree Show	9.00
Weds 4	Monsieur Hire (15) S/T	9.30
Thur 5	Born on the 4th of July (18)	6.30
Thur 5	Monsieur Hire (15) S/T	9.30
Fri 6	The Fabulous Baker Boys (15)	6.30
Fri 6	Georgette Meunier (18) S/T	9.00
Sat 7	Hairspray (PG)	2.00
Sat 7	The Fabulous Baker Boys (15)	6.30
Sat 7	Georgette Meunier (18) S/T	9.00
Sun 8	Africa at the Pictures Prog.2	6.00
Sun 8	Georgette Meunier (18) S/T	8.00
Mon 9	The Tin Drum (18) S/T	6.15
Mon 9	The Fabulous Baker Boys (15)	9.30
Tues 10	The Tin Drum (18) S/T	7.30
Weds 11	The Fabulous Baker Boys (15)	6.30
Weds 11	Cold Feet (15)	9.00
Thur 12	The Fabulous Baker Boys (15)	6.30
Thur 12	Cold Feet (15)	9.00
Fri 13	Driving Miss Daisy (U)	6.30
Fri 13	McCabe and Mrs Miller (15)	9.00
Sat 14	Steam on Screen	2.30
Sat 14	Driving Miss Daisy (U)	6.30
Sat 14	McCabe and Mrs Miller (15)	9.00
Sun 15	Africa at the Pictures Prog.3	6.00
Sun 15	McCabe and Mrs Miller (15)	8.00
Mon 16	Driving Miss Daisy (U)	8.00
Tues 17	Freaky plus L'Age d'Or	7.30
Wed 18	Driving Miss Daisy (U)	6.30
Wed 18	Fellini's 8 1/2 (15) S/T	9.00
Thur 19	Driving Miss Daisy (U)	6.30
Thur 19	Fellini's 8 1/2 (15) S/T	9.00
Fri 20	Dead Calm (15)	6.30
Fri 20	Santa Sangre (18) S/T	9.00
Sat 21	Lord of the Rings (PG)	2.00
Sat 21	Dead Calm (15)	6.30
Sat 21	Santa Sangre (18) S/T	9.00

GREEN LANE, DERBY.

OE1 1SA. Tel: 40170

Annie extends a warm welcome to all lesbians and gays to Derby Playhouse, compounding a commitment that has marked her nationally acclaimed (but locally ostracised) three year reign. With only her second production, The Children's Hour, she ran into trouble. "It seemed to the critics to be about lesbianism," Annie told Birmingham's City X magazine. "It isn't. It's about the power of rumour. The press seized on an aspect of the play which is infinitesimal and peripheral - and discouraged an enormous number of people from coming. It was my first discovery of homophobia in a community. I never expected it to exist on such a huge scale."

She leaves Derby with mixed feelings, taking her remarkable talents as an interpreter of plays with her. Catch Annie before she goes!

ACT UP NOTTINGHAM!

The AIDS Coalition to Unleash Power (ACT UP for short) has just set up a base in Nottingham and is only the third outside London. Nick Walton, whose idea it was to set up the local group, explained: "I had been involved briefly in London ACT UP and it seemed a good idea to see if people wanted to get involved in direct action over specific issues locally. It's only a question of time before an issue presents itself", he added.

ACT UP began life in New York and was co-founded by "Normal Heart" author Larry Kramer, taking as its slogan 'Action = Life'. Incensed by increasing numbers of his friends dying from AIDS and governmental indifference to a doubling of the death rate in one year, he co-ordinated a series of stunts, occupations and demonstrations which gained maximum publicity, not only for the idea of direct action, but more importantly, dented the public image of several well-known multinational drug companies involved in the 'AIDS Industry'.

From the outset, People With AIDS and HIV have been centrally involved in all aspects of the organisation. The first major stunt took place in October 1989 when ACT UP besieged the American Food and Drug Administration offices in a demonstration which won nationwide attention and ensured dramatic results. Four new treatments for secondary complications of AIDS were approved in record time.

With the arrival of ACT UP in Britain last year, a series of successful 'events' have already been pulled off, which have captured media interest, both nationally and internationally, on a wide range of issues.

All these issues have a common link - the homophobia, oppression and marginalisation of the lesbian and gay communities. A member of ACT UP London said: "Direct action certainly produces results, and changes that might otherwise take months or even years to achieve, by this method can come overnight, especially if an organisation is bothered about its public image."

The Nottingham group is planning to meet fortnightly. Further details from Nick Walton on 0602 423729.



ACT UP London attracting the attention of the media with a protest at the offices of the *Daily Mail* about columnist George Gale's assertion that "active homosexuals are potential murderers".

ACT UP 'EVENTS'

On Budget Day, five members of ACT UP London, suffragette style, chained themselves to the gates of Downing Street in a dramatic protest which disrupted the departure to the House of Commons of Chancellor of the Exchequer, John Major, and grabbed the attention of the world's media in the process. They were demonstrating against "totally inadequate" benefit levels for people living with AIDS or HIV.

A further successful occupation of the Australian High Commission offices in the Strand drew attention to the new and draconian immigration rules banning people with HIV/AIDS from entering Australia.

And when George Gale wrote in the *Daily Mail* that "active homosexuals are potential murderers", ACT UP London successfully protested at the offices of that paper.

Edinburgh ACT UP staged a protest at the recent annual general meeting of Wellcome PLC, producers of the anti-AIDS drug AZT. The Edinburgh activists - including some who were shareholders in the company - questioned the huge profits made by Wellcome from AZT and other drugs. They argued that the price of the drug should be cut by

50% and that further money should be ploughed into community research and treatment.

A peaceful direct action protest by Leeds ACT UP last month had finally persuaded the Youth Hostels Association to reconsider its policy of banning people with HIV from its hostels, said a YHA spokesperson. Ten protesters had earlier occupied the YHA Adventure shop in Leeds by climbing into sleeping bags, whilst calling for customers to boycott the store. This followed several noisy and much-publicised pickets of the Association's London offices. (A picture opposite shows ex-Nottingham man Tom Boyle (left) holding the Leeds banner.)



Success at Women's TUC

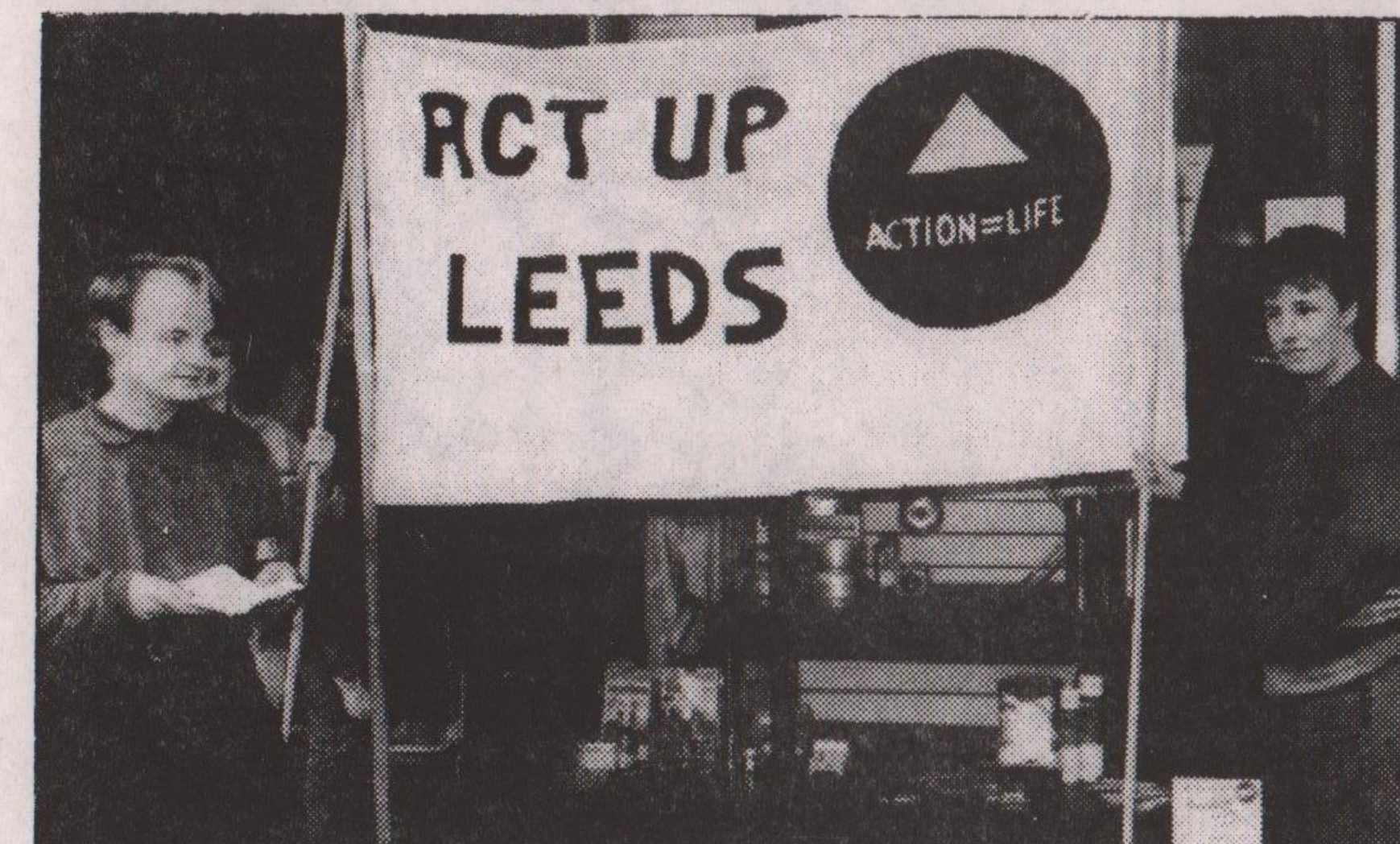
NALGO's delegation to the Women's TUC argued successfully against a motion which supported attempts to restrict the availability of donor insemination. These restrictions are proposed in the 'Embryo Bill' which has been going through Parliament, and could be used against lesbians.

Amanda Baird, (pictured above), co-chair of the National Lesbian and Gay Steering Committee, gave an impassioned speech to the conference demanding her rights as a lesbian to have children. NALGO's amendment was passed. (Amanda is believed to have broken new ground by being the first speaker at Women's TUC to use the word 'lesbian' in public.)

NALGO in sponsorship shocker

NALGO is the first trade union to officially sponsor the annual lesbian and gay Pride celebrations. The sponsorship deal means that NALGO's support for lesbian and gay rights will be even more visible, with the union's logo splashed across posters, programmes and carnival advertising.

In London, much excitement has already broken out at the possibility of NALGO having a float in the march itself (which will ease aching feet over the longer-than-ever-before route from Victoria to Kennington Park, by way of Trafalgar Square and Waterloo bridge). Other attractions on the big day, 30th June, will be a NALGO stall with plenty of freebies, and NALGO entertainers.



Members of Leeds ACT UP protest at their local YHA shop

THE AMALFI LICENSED HOTEL

19 & 21 Eaves Street,
Blackpool 0253 - 22971

Booking now for Summer
& Illuminations

Open All Year

Marlene & Helen welcome you for a comfortable stay - 1 minute from the seafront
5 minutes from the **Flamingo**
(concessionary passes available), Lucy's
and 501 bar

Bed & Breakfast;
EVENING MEAL OPTIONAL

Short stays welcome

Shakti presents

.....
Lesbian & Gay
Disco
.....

upstairs at Asquiths
(The Club)
on Saturday 7th
July

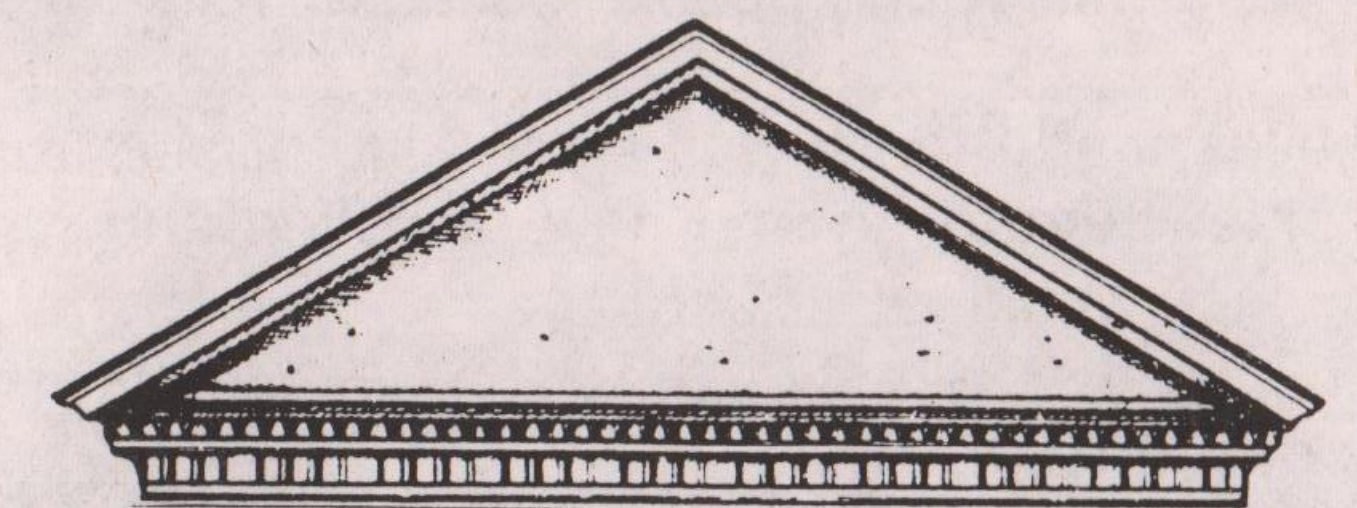
Admission £2.50 10pm - 2am
Last admission at midnight

Club entrance at 22
Silver St, Leicester
Tel: 0533 620211

BARRIE & JULIAN
WARD & GRIFFITHS

SOLICITORS

3 Clarendon Street
Nottingham NG1 5HS
Telephone (0602) 412622
After Hours (0602) 602324



For those who appreciate the
value of good design....

We did it for Leicester Lesbian &
Gayline - Perhaps we could do it for
you?

Complete design, building
and decorating services for
your home or your business

We welcome enquiries for the smallest
or the largest projects

Call us on (0602) 455658

Our advice is free of charge and without obligation

ROMANDEVELOPMENTS

Postman Pete's Mailbag

I was just finishing my morning delivery when I bumped into that man about town, Michael Yeomans, and so, depositing by shoulder bag, we indulged ourselves in coffee and croissants, while I did a quick update for my malebag.

28 year-old Nottingham born Michael reckons he's a veteran of the gay scene, and in his 12 years as an out-gay man, he's done more than most, including a spell in a House of Boys for 18 months in Amsterdam during those heady, pre-Aids days of the late '70s.

"I was pretty impressionable and never fearful then," he sighs.

People may remember it was Michael who, several years ago, hired MGM, put on a cabaret and in the process raised over £3,000 for Famine Ethiopia, a local charity, enough to equip and send an ambulance to Ethiopia.

More recently, he's been in catering and has just set up his own music publishing company, Aspects of Music, and has plans for another record release.

But right now his mind is on unemployment. "The last ten years in Thatcher's Britain have left thousands and thousands of young people with high expectations but no jobs, so it means some young gay men have drifted into drug-taking and prostitution as a way of making a living. With no money, and the prospect of making £20 or so a day from several customers, kids often forget about the risks of Aids and un-safe sex.

"When I used to work for this escort agency in Amsterdam, at least there was some kind of supervision, you had somewhere to live. There's a real need for someone to work with young people, because many of them are exploited and isolated."

He believes that if there was some kind of club run and controlled by its members, somewhere to go and have a coffee and just chat, somewhere inexpensive, that would be a help.

"The commercial club scene in Nottingham is not very friendly and has been dominated by the same greedy people for the last ten years or so."

It was getting late and I had to finish my round, so gathering up my shoulder bag, I bade farewell to Michael Yeomans who, by the way, is just off for a bona six-week cruise on a liner up the Norwegian fjords; but not one to take chances, he was about to sign up with his union. "You never know when you might need them", he laughs.



Graeme & Jeff
invite you to

The PINEAPPLE INN

Leicester's new gay venue
27 Burleys Way, Leicester

Opposite Bus Station

Mon-Sat 7-11pm

Sun 12-3; 7-10.30pm

Disco Wed-Sun nights

Sun 12-3: free hot bar snacks

From 26th May, open from

midday - 11pm, Saturdays only

Tel: 0533 623384

Saturday 16th June 9pm

"The Sound of Music"

with the VON TROLLOP FAMILY

Wanted

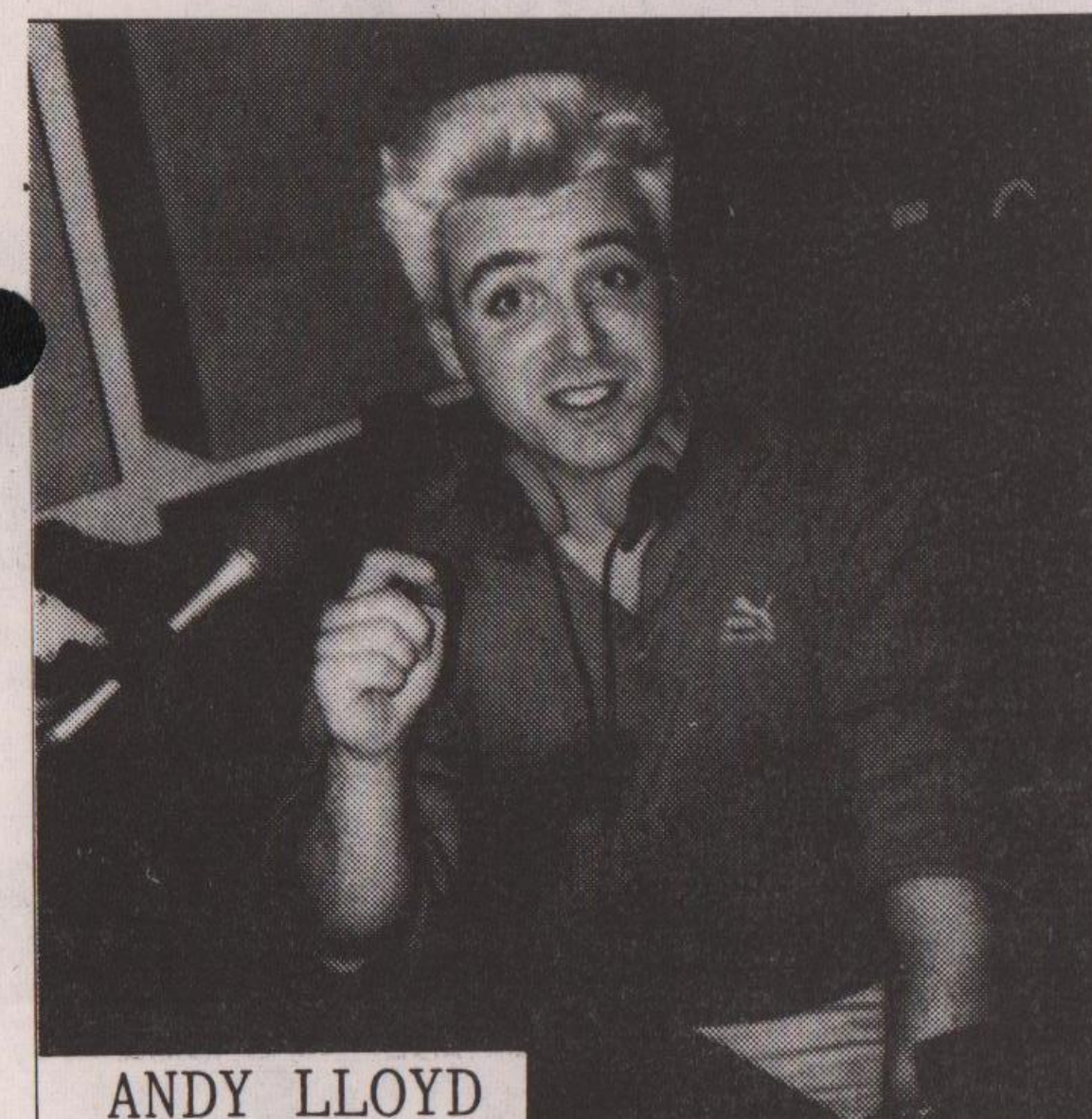
Models, any age

Photographer Matthew

Toresen is designing safer sex posters for Leeds Aidsline and needs men - young, middle aged and elders to appear in a group photo for the Leeds posters. If you are interested in appearing in the poster, contact Matthew c/o Nottingham Council for Voluntary Service Lesbian/Gay Group, 31 Mansfield Road, Nottingham, as soon as possible.



Where were these lot off to? - our back page offers a clue



ANDY LLOYD

CENTRE 238

July 2nd represents Centre 238's most important day to date. On this day Centre 238 begins its full scheduling, which is intended to serve as wide a range of gay mens' and womens' interests as possible.

Centre 238 are currently seeking sponsorship, both local and national, from gay organisations. They are also seeking enthusiastic and committed staff, on a voluntary basis, to help realise Centre 238's potential.

TELE-DATER

Brand new local dating service

Call (0507) 473639 to
include your own
FREE dating message

Or call 0898 886993
to listen to local
messages

TBO Ltd PO Box 6 LN12 2AH

Calls charged at 25p per minute cheap rate or 38p per minute peak rate

DERBY PLAYHOUSE

THE SCHOOL FOR WIVES
by Molière

Adapted by Neil Bartlett

Directed by Neil Bartlett and Annie Castledine

FRIDAY 29 JUNE - SATURDAY 21 JULY 1990

BOX OFFICE (0332) 363275

DERBY PLAYHOUSE

SCHOOL FOR WIVES

by Molière

Adapted by Neil Bartlett

Directed by Neil Bartlett and Annie Castledine
Designed by Martin Johns

FRIDAY 29 JUNE -
SATURDAY 21 JULY 1990

A classic French comedy recreated for Derby Playhouse

In the centre of Derby our story is set
A tale we are sure you will never forget
A local town councillor is set to be wed
For Arnold loves Agnes it has to be said.

She's been tutored by nuns at his request
To stay chaste and pure, to make her the best
Wife he could have, who would never deceive
Or that is what Molière would have us believe.

But the story will twist, as all good ones do
With a plot so outrageous you'll wonder who's who
Two pianists will help the action along
To provide subtle comment in music and song

So visit the Playhouse when WIVES is in town
If you want entertaining we won't let you down
A panto for grown-ups with Summertime laughter
Book your tickets now, it's your money we're after.

BOX OFFICE (0332) 363275

Tickets from £4.50

The theatre is fully air-conditioned, so while passions may be high on stage we can guarantee a cool seat in the auditorium and a cold drink at the bar!

To advertise here, call
Simon on 0602 472668

HYSON GREEN WHOLEFOODS

Mon-Sat 9.30-6
(Thurs/Fri til late)

WE SELL ENVIRONMENTALLY
SAFE AND CRUELTY FREE
CLEANERS AND TOILETRIES, A
GOOD SELECTION OF HERBS
& SPICES, FRESH BREAD AND
A WIDE SELECTION OF SNACK
FOODS

ORDERS TAKEN
72 RADFORD ROAD
702056

the body in extremis

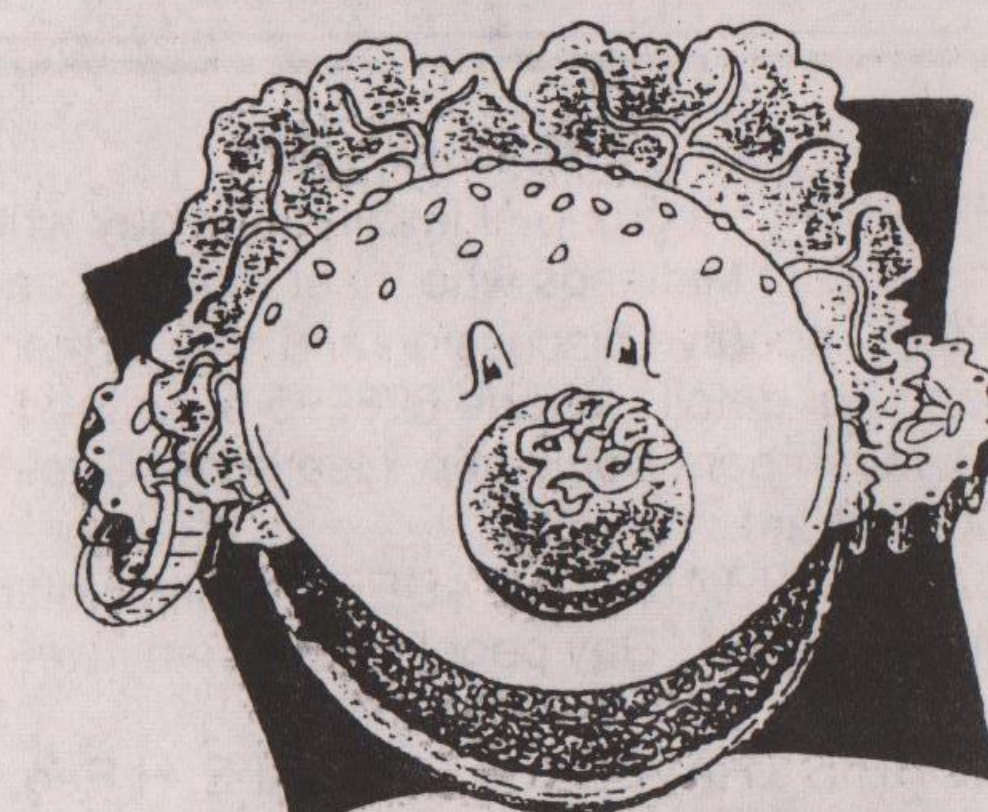
films by
Stan Brakhage
Birgit & Wilhelm Hein
Kurt Kren
Roland Lethem
Kathleen Maitland-Carter
Jayne Parker
Jan Svankmajer
Cleo Uebelmann

The Body in extremis
Programme Three:
Sunday 17th June 6.00pm
Programme Four:
Introduced by Moira Sweeney of the Film
and Video Umbrella
Sunday 24th June 6.00pm

METRO CINEMA
GREEN LANE, DERBY. DE1 1SA. Tel: 40170

VEGGIES

CATERING CAMPAIGN (NOTTINGHAM)



Tasty Wholesome Snacks

LUNCHTIMES AT
CLINTON STREET WEST



FOR
TASTY VEGETARIAN FOOD

Open:
Daytime Monday - Saturday

15 GOOSEGATE
HOCKLEY
Tel: 481115