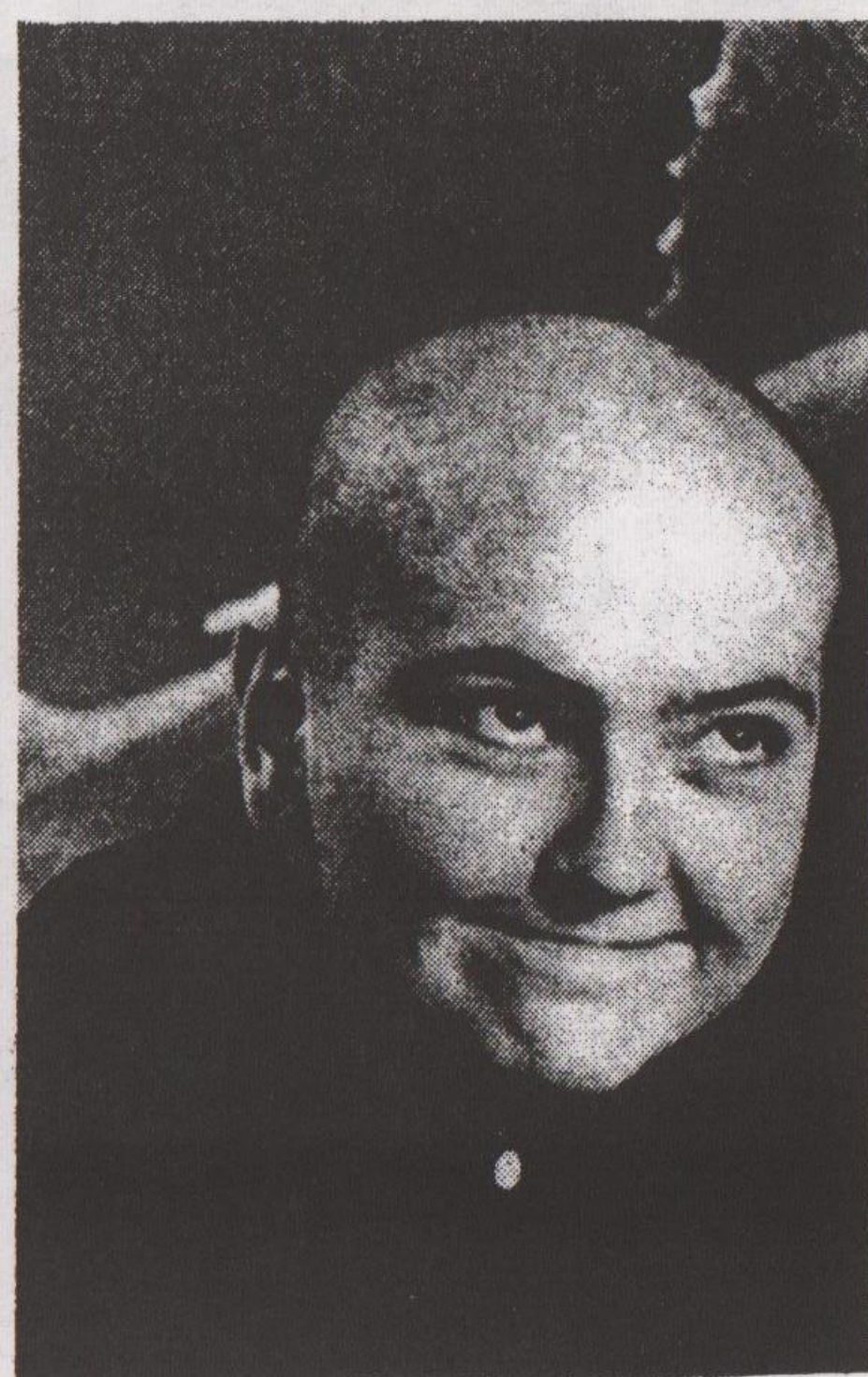


## WELCOME TO MEL AT THE LESBIAN CENTRE

The Lesbian Social Space at the Nottingham Women's Centre has a new worker for a three months placement. Mel Gombold hopes the Social Space will be used by more lesbians during the day which may enable new groups to start up. She has some ideas for activities including workshops, courses and socials. "In particular it would be good if we could enable a young lesbian group to start meeting. If you fancy popping in for a chat and a cuppa or a game of pool, there will be someone to play with", said Mel. Mel will be on hand Tuesday, Wednesday and Thursday afternoons. The Nottingham Women's Centre is at 30 Chaucer Street, Nottingham.



## LEICESTER PROMENAID

Promenaid '93 takes place on Sunday 17th January, at the Leicester Haymarket Theatre and again presents a star-studded fundraising variety event in aid of Leicestershire HIV organisations. The event begins at 3pm with an afternoon of entertainment for everyone, including a celebrity auction, giant raffle, face painting, and celebrity autographs. At 8pm there is a spectacular two and half hour variety show on stage, directed by Paul Kerryson and featuring David Dale, recently at Leicester, Nottingham and elsewhere in 'Hot Stuff' and Richard Gibson from 'Allo 'Allo'. All seats are priced at £13.50 and tickets can be booked on 0533-539797.

## HUFF'S IN TOWN

Huffty Reah, the crimplene comic makes a return appearance to Nottingham when she plays Triangles Club on Friday, 15th January. As Huffty's Nana says, "crimplene is sent by the Good Lord as a gift to working women - even the Queen wears it." A member of North Tyneside Youth Theatre for three years, before becoming a Youth Worker for a girls group in the Newcastle area -teaching drama, Huffty developed her performing skills and now co-writes her own material. She was also a member of the North East's only acapella singing group, performing both locally and nationally. No stranger to 'the box', she has made numerous appearances in the C4 Out series over the years. A stand up Geordie comedian, her show is her autobiography. Her humour based on personal experience and growing up on the North East coast as the only Polish Catholic working class lesbian around which is probably experience enough!

## THE MEN'S SEXUAL HEALTH PROJECT

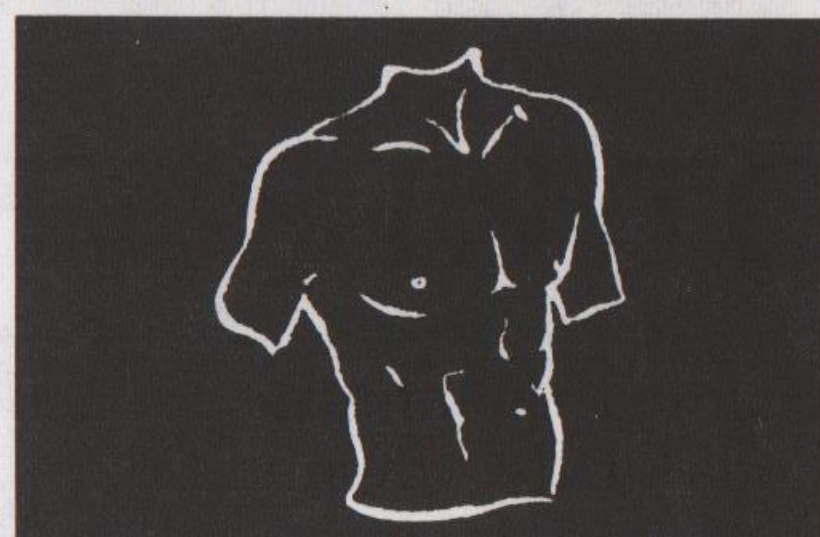
45, King Street, Leicester

ALL OUR SERVICES ARE FREE AND CONFIDENTIAL  
YOU DON'T EVEN HAVE TO GIVE YOUR NAME

Available free to all men who have sex with men regardless of age, sexuality, race, religion, disability, or antibody status.

### TRADE SAFELY

Do you like sex? We do. Do you use the Gay scene?  
Do you cottage or cruise? Did you know that a gay man tests HIV+ every hour of the working week?  
Did you know we can now do something about this?



TRADE is a new group of men who have sex with men who want to do something about the growing HIV epidemic. Our next meeting is on Monday 1st February at 45, King Street, Leicester.

If you'd like to get involved, why not come along.  
For more information phone Andy:  
0533 541747 (office hours)

### FREE CONDOM DROP IN

#### Opening times

Every Thursday 11.30am-2.30pm

Every Friday 11.30am-2.30pm

Second Saturday each month 12.00am-3.00pm

(No appointment necessary)

If you have difficulties visiting during these times ring  
0533-541747 for an appointment free..... (and easy)

#### ABSOLUTELY FREE!

\*A choice of gay safe condoms \*Water based lubricant \*Dental dams, latex gloves \*Information, counselling and support on HIV/AIDS, sexuality, relationships, HIV testing, safer sex or any concerns about sexual health \*Leaflets, safer sex videos, posters etc.

This is a pilot project from January to March 1993.

January 1993  
Issue 33

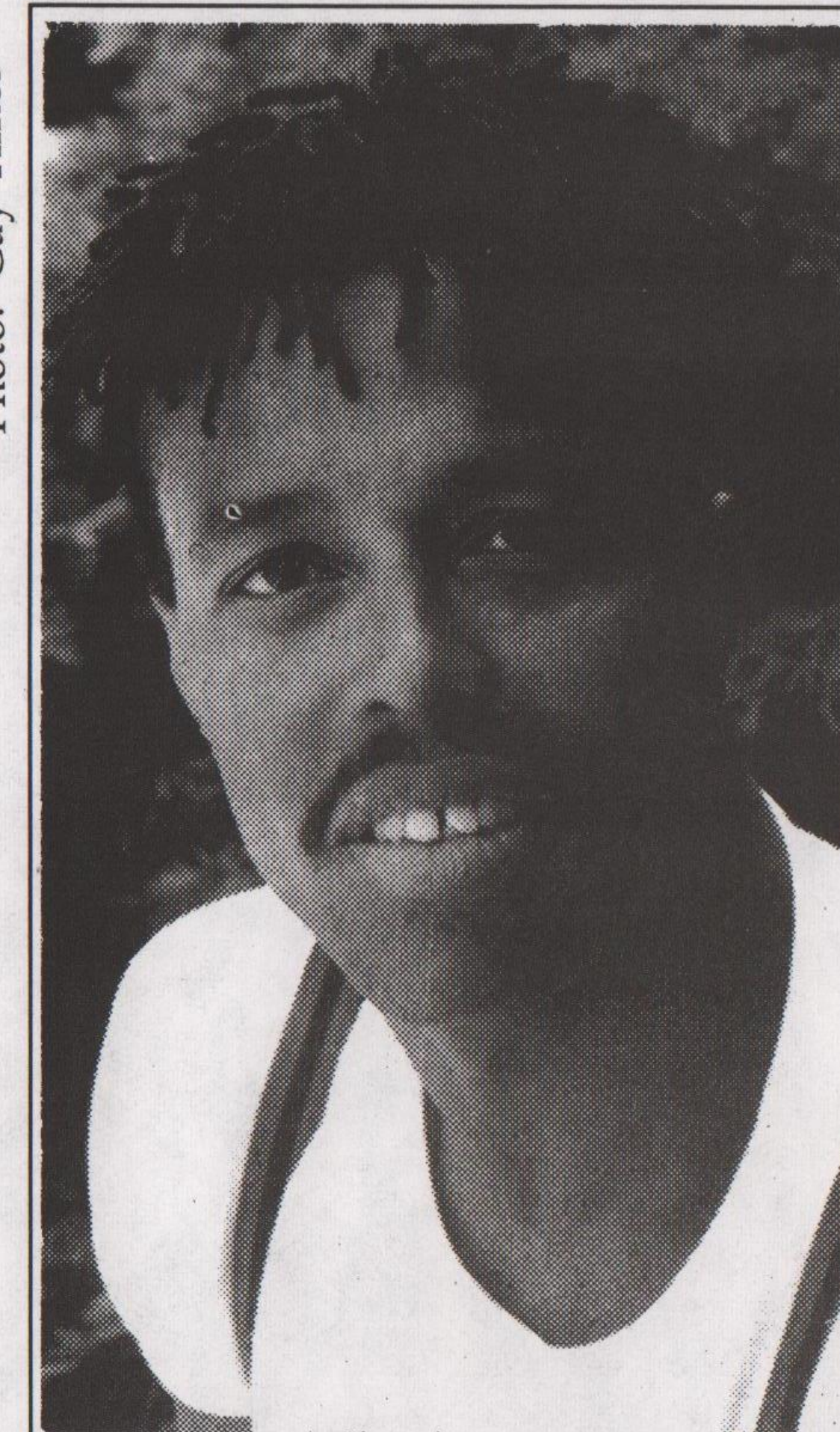
# outright!

for gays and lesbians in central england

free!

## WINTER PRIDE PROFITS

Photo: Gay Times



### PROMENAID 93



Leicester Promenaid 93 takes place on Sunday 17th January at the Haymarket Theatre (see details page 8).

Against all odds, Winter Pride '92 made £8,000 profit at the end of their day-long event held at the University of London Union in early December, with over 2,000 paying customers. Only weeks earlier failure had seemed on the cards when several key people had resigned from the Committee, predicting doom and gloom. (The Lesbian & Gay Pride Organising Committee went into liquidation earlier in the year, with debts of over £30,000).

That's when Tom Brooks a stalwart of London Lesbian & Gay Switchboard stepped in as Voluntary Co-ordinator for Winter Pride. Said Tom: "I saw this as a challenge to make it work and we eventually managed to regain lost ground when a number of gay and lesbian businesses stumped up the £4,000 hire fee for ULU. Lily Savage and Regina Fong, who can command £2,000 an appearance, agreed to appear free which was the icing on the cake. As you can imagine this improved morale no end and was a turnaround for us and also showed our communities pulling together".

As a result of the boost for Pride coffers, the new Pride Committee have agreed to take over some of the debts of the now defunct company, LAGPOC, which includes £6,000 owed to Lambeth Council for the hire of Brockwell Park. "It is important that we are seen to act responsibly and rebuild goodwill, which means we are in a strong position to re-book the Park for Pride '93", he added.

June Pride is off to a flying start. With a permanent office base and its new logo chosen, and merchandising plans well in hand. June Pride this year will be a week earlier on Saturday June 19th in London with a European Pride celebration the following week in Berlin. Plans are already under way to lay on a chartered trains or aircraft.

"We shall need 2,000 stewards for Pride '93. ECC fosters a sense of community and Pride is about increased visibility so volunteering is a good way of raising our profile." So if you can offer your support contact Tom on (071) 737 5763.

And in between all this work, Tom is cramming for his accountancy finals which take place shortly. So the motto seems to be 'If you want a job done well, ask a busy person!'

Last year about 400 people travelled from Derby, Leicester and Nottingham in specially booked Pride buses.

Steve Corbin graduated from University in film writing and enjoyed critical acclaim with his first novel, published in 1989, 'No Easy Place To Be'. The book followed the lives of three black sisters set in 1920's Harlem. His second novel entitled 'Fragments That Remain', published by Gay Men's Press is about a contemporary interracial male relationship, in which Steve shows an equal strength and conviction in depicting both the horrors and the joys of gay life for black Americans today.

## MUSHROOM BOOKSHOP

10-12 Heathcote Street,  
NOTTINGHAM  
(0602) 582506

## JOB VACANCY

for full time worker starting in the New Year. £8,250 per annum, nine-day fortnight.

Closing date 15th January

Job specifications available now from Mushroom Bookshop

## TRIANGLES

Forest Tavern  
North Sherwood St, Nottingham

PROUDLY PRESENT

# HUFFTY

15 January

(As seen on TV)

You'll be rolling in the aisles!

Doors shut at 10pm  
Members £2 Guests £3

Guest membership available on the night

The PINEAPPLE INN

27 Burleys Way, Leicester  
(opposite bus station) Tel: 0533 - 623384

## SALE TIME RECESSION BEATER!

Gin, Dark Rum, Vodka & Scotch, Double & Gun  
Dash, £1.50 Monday evenings.  
Selected bottle beers £1 a bottle, Tuesday evenings  
Fosters & bitter, £1 a pint, Thursday evenings

Published by Naff Co-operative Ltd, PO Box 4, West PDO, Nottingham, NG7 2DJ. Tel: (0602) 780124.  
Printed by Anvil Press Ltd (TU) (a workers co-operative), 105-107, Nottingham Road, Derby, DE1 3QR. Tel: (0332) 298213.





## The Edward Carpenter Community GAY MEN'S WEEK AT WASTWATER

24th April - 1st May, 1993

Spend a residential week in an unspoilt, hidden part of Cumbria with thirty other gay men in a comfortable youth hostel and you have a holiday with a difference. What is a Gay Men's Week? Firstly, it's an opportunity for a group of gay men to spend time together in beautiful surroundings in carefully chosen 'gay friendly' places where we can be ourselves on our own terms and have exclusive use of the premises. Thirty people in a fifty-six bed hostel gives us space to spread out. Mostly a Gay Men's Week consists of all those who attend. Anyone

who's there can run workshops or share skills if they wish, such as leading walks, canoeing, singing, drama, circle dancing, massage, mask making or whatever. If you like doing it you can bet that someone else will as well whether its taking part as one of the crowd,

leading a group or watching, or a mix of all three. There's plenty on offer, wet or fine. And with a roaring log fire you can sit around talking way into the night if you want. We'd be surprised if you don't have a great time one way or another. But in case you feel a bit lost, everyone will be part of a small group of around five people. A chance to get to know a few people well if you want to. Sliding scale starts at £86 all inclusive. Want to know more? Then contact Edward Carpenter Community, 21 Devonshire Promenade, Lenton, Nottingham, NG7 2DS or (0602) 780124. But hurry places are likely to go fast!



Photo: Robert Bramwell-Jones

Castle Upholstery  
& Antiques

19, Fortescue Close, Tattershall, Lincs.

### Furniture Restoration

Don't worry about the broken spring and the worn out arm on the settee: "you must have been lucky enough to use it for other things".

We at Castle Upholstery & Antiques undertake all Re-upholstery and guarantee all our work will be of first class quality, and done at a reasonable price. Estimates free.

Vast range of fabrics to choose from with 10% off for all Outright readers.

Ring John on 0526-342260

Serving Lincolnshire only.



NOTTINGHAM

aids

HELPLINE

585526

MONDAY - WEDNESDAY 7 - 9.30pm  
CONFIDENTIAL ADVICE,  
INFORMATION AND  
SUPPORT



P.O. Box 208  
NOTTINGHAM NG1 1NZ  
Charity Registration No 702070  
Administration Tel: (0602) 411989

### A FREE SERVICE FOR GAY MEN IN NOTTINGHAM

Informal and confidential  
counselling on a range of issues  
around HIV testing, safer sex and  
sexual well-being in general.

- \*free condoms
- \*free KY
- \*Hepatitis B vaccination
- \*meeting place for groups
- \*videos
- \*no appointment necessary

All in comfortable surroundings at  
**NOTTINGHAM  
HEALTH SHOP**

Broad Street, Hockley, Nottingham  
Drop in Mon-Fri 9am-5pm or ring  
Ashley on (0602) 475414



**ACKRO**

Women Builders and Roofers

40, Windermere Road,  
Forest Fields, Nottingham NG7 6HN

We are qualified tradeswomen,  
experienced in all aspects of  
general building including:

- roofing
- alterations
- extensions
- renovations
- repointing
- joinery etc

Reclaimed materials used where possible

Free estimates

Tel: (0602) 791490

### FRAGMENTS

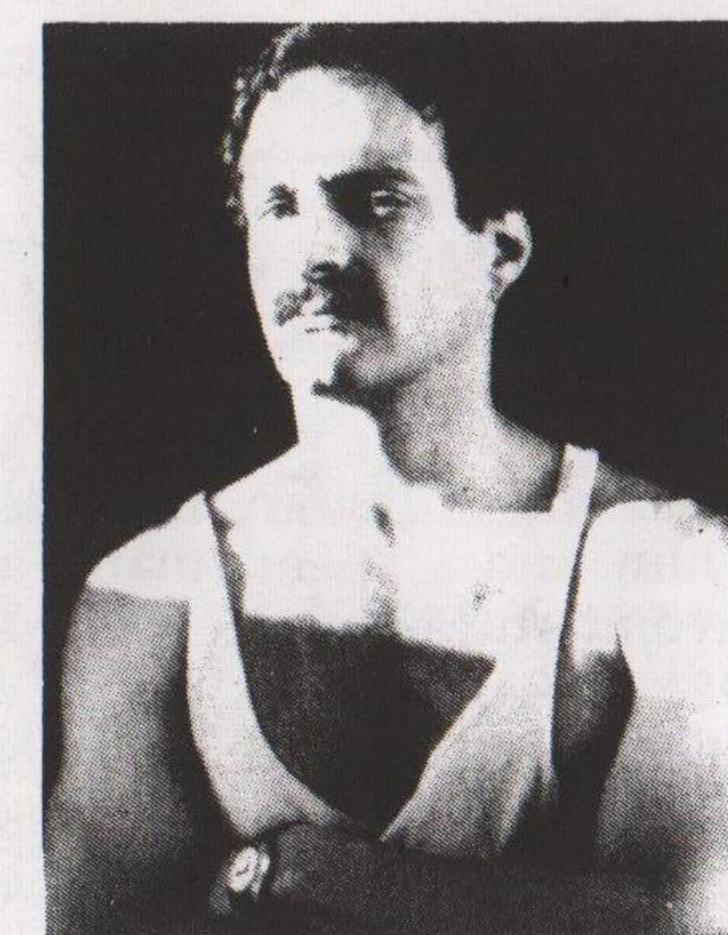
from fifteen years ago

**LEICESTER:** Almost a hundred people marched from Victoria Park to the Leicester Mercury office to protest against the paper's refusal to accept Gayline ads. While two of the marchers were allowed in to speak to the editor, two others evaded a police cordon and slipped in by a back door to distribute leaflets to the staff working there.

**ROTHERHAM:** A local councillor who had been criticised by the Local Government Ombudsman for banning the town's CHE group from booking the Assembly Rooms received a New Years card from the group thanking him for all the publicity had unwittingly given the group. Their membership had risen from 20 to 250 during the campaign.

### FROM GAY MEN'S PRESS

Following up his highly-successful 'Eighty-Sixed', David Feinberg's latest novel 'Spontaneous Combustion' is the story of B. J. Rosenthal, "the most neurotic personality in Manhattan".



Having watched Aids sweep through the ranks of his friends and ex-tricks, B. J. himself now tests positive, and it will take more than sarcasm and psychotherapy to survive. As the book explores B. J.'s options, from AZT to ACT-UP, it deepens its portrait of one of the most resilient, funny, and genuinely heroic protagonists in recent fiction. Obtainable from Mushroom Bookshop, Nottingham, and Blackthorn Books, Leicester, Independent Bookshop, Sheffield.

### NETWORK

The East Midlands Network of Lesbian and Gay Befrienders, Counsellors and Therapists is now open to new members. They meet bi-monthly in Nottingham. The next meeting is on Sun. 14th Feb. Contact Brian Holmes, 138 Upperthorpe, Sheffield, S6 3NF for further information.

### RECLAIM THE NIGHT

Do you feel you can safely walk home on your own at night? Do you feel you should be able to walk home on your own at night? This is taken for granted by most men, but for women it is a different story. A new group called STRIDE are trying to do something about women's safety when out and about. The aim of this group is to concentrate particularly on safe travel for women. "We believe women have the right to go anywhere, anytime; there should be no curfew on women" it says. STRIDE is calling for more women to make the group larger. Some of the ideas they have include an effective complaints procedure against taxi drivers and the organising of local safety surveys. Their next meeting is Friday 29th January, 1993, 12.30 to 2pm, Womens' Centre, 30 Chaucer Street, Nottingham. Further information from Kathy 0602-702879 or Pauline 0602-750215.

Simon, Nigel, John & staff welcome you to

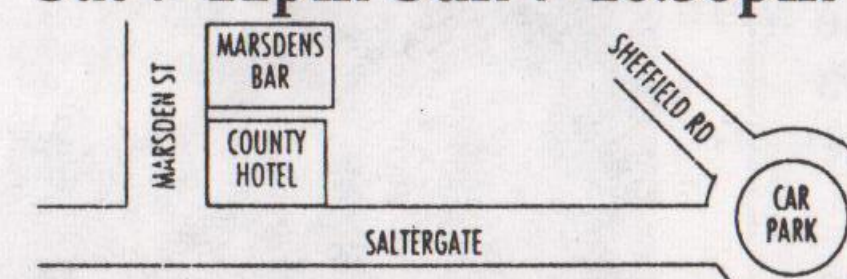
**CHESTERFIELD**

### •MARSDEN'S BAR•

13 Marsden Street, Chesterfield

(0246) 232618

Bar open Mon-Fri: 12-3pm & 7-11pm  
Sat 7-11pm Sun 7-10.30pm



**BELLE DE JOUR**  
Tuesday 12th-Thursday 14th  
January  
Tues & Thur at 9.00 Wed at  
7.00

Starring Catherine Deneuve,  
Jean Sorel

A new print of an old masterpiece. Icy Deneuve is a bored surgeon's wife working away the long afternoons in an upmarket brothel. Master Surrealist Bunuel treats the lurid plot with wry, cool detachment. Simply a classic.

**Orson Welles' OTHELLO**  
Friday 29th-Sunday 31st  
January, 6.30

Starring Orson Welles,  
Michael MacLennan, Fay  
Compton

The American Welles was always the best movie interpreter of Britain's greatest playwright, partly because Welles refused to approach the Bard on his knees. However, the film's acting honours are stolen from Welles by Irish actor MacLennan's astonishing portrayal of the twisted, sexually inadequate Iago. This is a newly restored print of a forgotten masterpiece.

**HUSBANDS AND WIVES**  
Friday 29th January-Thursday  
4th February  
Fri-Sun at 9.00, Tues-Thurs at  
6.30

Starring Woody Allen, Mia  
Farrow, Judy Davis

Forget the scandals and what we're left with is a typically deft combination of wry humour and smart observation. Allen and Farrow play a married couple forced to look more closely at their relationship after the breakup of their friends' marriage.

**TETSUO 2 -  
THE BODYHAMMER**  
Tuesday 2nd-Thursday 4th  
February 9.00

Starring Shinya Tsukamoto,  
Nobu Kanaoka

Taniguchi's young son is kidnapped while he and his wife are shopping. Giving chase he finds his body undergoing horrific physical transformations. Not so much a sequel, more a radical colour remake of the cult underground original. T 2 is filled with stomach churning machine mutations, frenetic chases, Manga violence, metal fetishism and deafening industrial pounding.

**METRO CINEMA**

Green Lane, Derby: box office (0332) 40170

## LIFE IS *not* THE SAME IF YOU'RE GAY.

The laws surrounding pensions make it difficult for unmarried couples to plan for retirement. When you are gay, it is not only the law that makes it difficult, it is the misconceptions surrounding intestacy and trusts. In other words, if you think you may ever want a partner to benefit from your pension plan in the event of your death you cannot leave it to chance.

Your independent financial adviser should not only inform you of the costs involved of any particular pension policy, but the size, strength and past performance of the pensions office. Financial advice however, does not stop there.

To us, getting it right seems surprisingly simple. We do not charge and our service is confidential.

**GAY MONEY**  
STRAIGHT ADVICE

**ima**  
Ivan Maslow Associates  
195 Wardour Street - London W1 Tel: 071 494 1848 Fax: 071 494 1849

The FUTON WORKSHOP  
60 GOOSEGATE HOCKLEY NOTTINGHAM



10% discount on all  
goods to Outright  
readers with this  
advert until

January 31st

The Most  
Natural Beds  
in the World

SEND FOR A BROCHURE

Please write your name and address below and post to 60 Goosegate, Hockley, Nottingham NG1 1SS

OR CALL 0602 240790



# OUTwrite!

In which we invite those who have something to say to speak out

## All Is Not Lost

It has almost been four years now since my partner died and although time has helped to heal the wound my thoughts are still with him and I spend many a pleasant hour dwelling on and reliving memories of the wonderful times we shared together.

Andrew was only twenty years old, in fact he died two days before his twenty-first birthday which, bless him, he had so much looked forward to. I was almost twice his age but the gap was completely irrelevant and unimportant as true love and devotion has no barriers.

To lose one's lover in this way is a traumatic experience understandably and during the last four years I have learnt many a lesson in my effort to cope in his absence. If any of our readers presently find themselves in a similar situation having recently lost a loved one then please take heed of the do's and don'ts involved, these advises I give you as a result of my own experiences and I hope and trust that you will find them to be both valid and helpful: don't blame or reject Christianity for what has happened. Instead, thank the Good Lord for "lending" him to you for however long or short the period may have been. Don't forget he did belong to Him and that he loved him as well, God merely called him back home. Don't under any circumstances hide and lock yourself away from society. You have friends who care and it's so important that you allow them the opportunity to help and assist you in your hour of need. Give them a chance, they deserve it and you owe it to them.

Don't (as the months go by and time begins to heal) go out on the scene purposely to find another but allow nature to take its course. What will be will be. Do remember that life must go on. Our visit on earth is merely a short holiday. There's a wonderful world out there to be enjoyed, so go out and enjoy it as, I'm sure, he would have wanted you to.

Do make sure that you never, ever attempt to make comparisons between someone you might meet and your departed loved one in the earlier stages of your acquaintance as you will undoubtedly write him off as a non-starter. Give him a chance thus giving yourself a chance to get to know the eventual and "real him", he may surprise you. And finally do (when you eventually meet someone you like) tell him of your recent misfortune as it is only fair that he knows, but at the same time take great care not to mention him thereon, keep and treasure your memories within yourself. Put yourself in his position and you will realise that my advice makes "good sense".

When Andrew died I put pen to paper and wrote a poem in a way of a dedication to his memory which I set to background music and had it recorded. Now, each time I feel I need to be close to him I put the tape on, have a little cry, pick myself up and continue to face the world with pride, dignity, gratitude and a lot of determination.

DALE



## MEMBERSHIP FOR 1993

To ease the problems and congestion at the front door the Committee have decided on memberships being of two types. Type 1: A free membership for people visiting Curzons only once or twice a year or people out of work with little money. The advantage of the membership is that you will not have to sign the visitors' book each time you come in the Club but there will be a small door charge. Type 2: A member's Gold Card at a cost of £25. This will entitle Gold Card Members to free admission at any time during opening hours with the exception of Xmas Eve and New Year's Eve. Membership is granted subject to the decision of the Committee and being valid 48 hours after acceptance.

Keith and Dave wish all their customers a Happy New Year.

25 CURZON STREET, DERBY Tel: (0332) 363739

## DERBY AIDSLINE

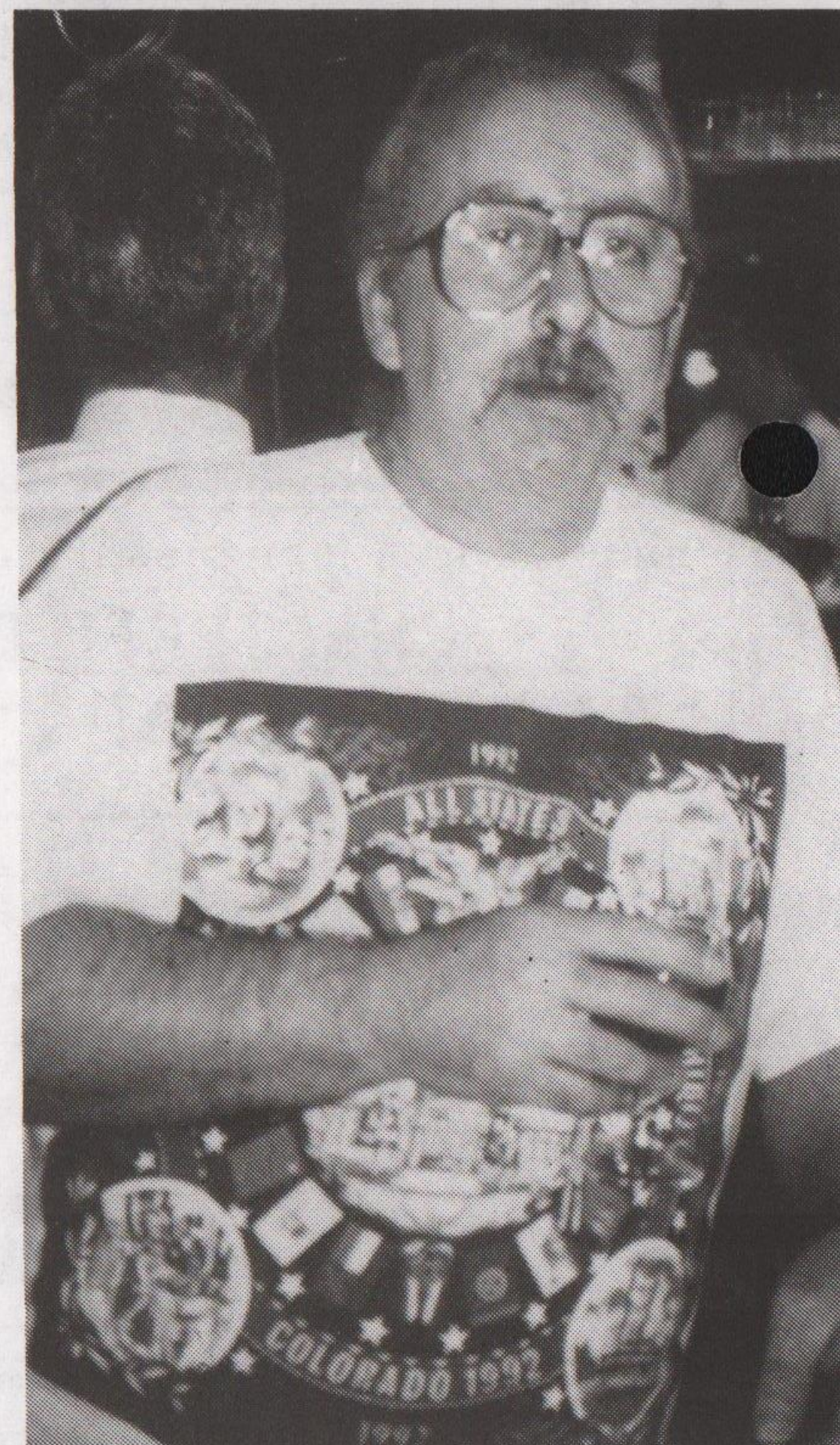
Worried/confused about HIV/AIDS?

For confidential advice and information, phone FREE on Derby Aidline

0800 - 622738

Mon - Fri 7 - 9pm

Thurs 2 - 4pm



## HYSON GREEN LAW CENTRE



119 RADFORD ROAD  
(opp. Asda) Telephone: 787813

### OPENING TIMES

Monday, Tuesday, Thursday & Friday  
10am - 1pm

and Thursday evening 6.30 - 8pm

WE PROVIDE FREE LEGAL  
ADVICE AND  
REPRESENTATION ON...

SOCIAL SECURITY, EMPLOYMENT,  
HOUSING & IMMIGRATION/NATIONALITY  
LAW

HYSON GREEN LAW CENTRE  
Improving Access to Justice

# OUTwrite!

In which we invite those who have something to say to speak out

## DOES LOVE REALLY CONQUER ALL?

We love each other, surely that is all that matters? We met about a year ago down our local pub. It wasn't love at first sight, in fact we had seen each other on a number of occasions over a space of three months or so. There had been times when we had locked our stares at each other or one had caught the other glancing, but that was how it had stayed, for roughly three or four months anyway.

Perhaps that was what we had needed; our three or four months 'introduction' because we knew we weren't the same as a lot of the regular punters. You can tell you see; you get to know, by watching or word of mouth, who are the wanderers, who are the ones perhaps who give the rest of us our 'adopted bad image'. But we knew, we had used our introduction period to unconsciously suss out each other!

Then it happened; we kissed. It was as if we had both been walking along the same path from different directions, now to finally meet in the middle. We had stood watching a band play, the feeling of just standing beside each other, only very slightly touching, was in itself electrifying. As if drawn by magnets, our hands down by our sides, our little fingers entwined and the feeling was one of complete unity.

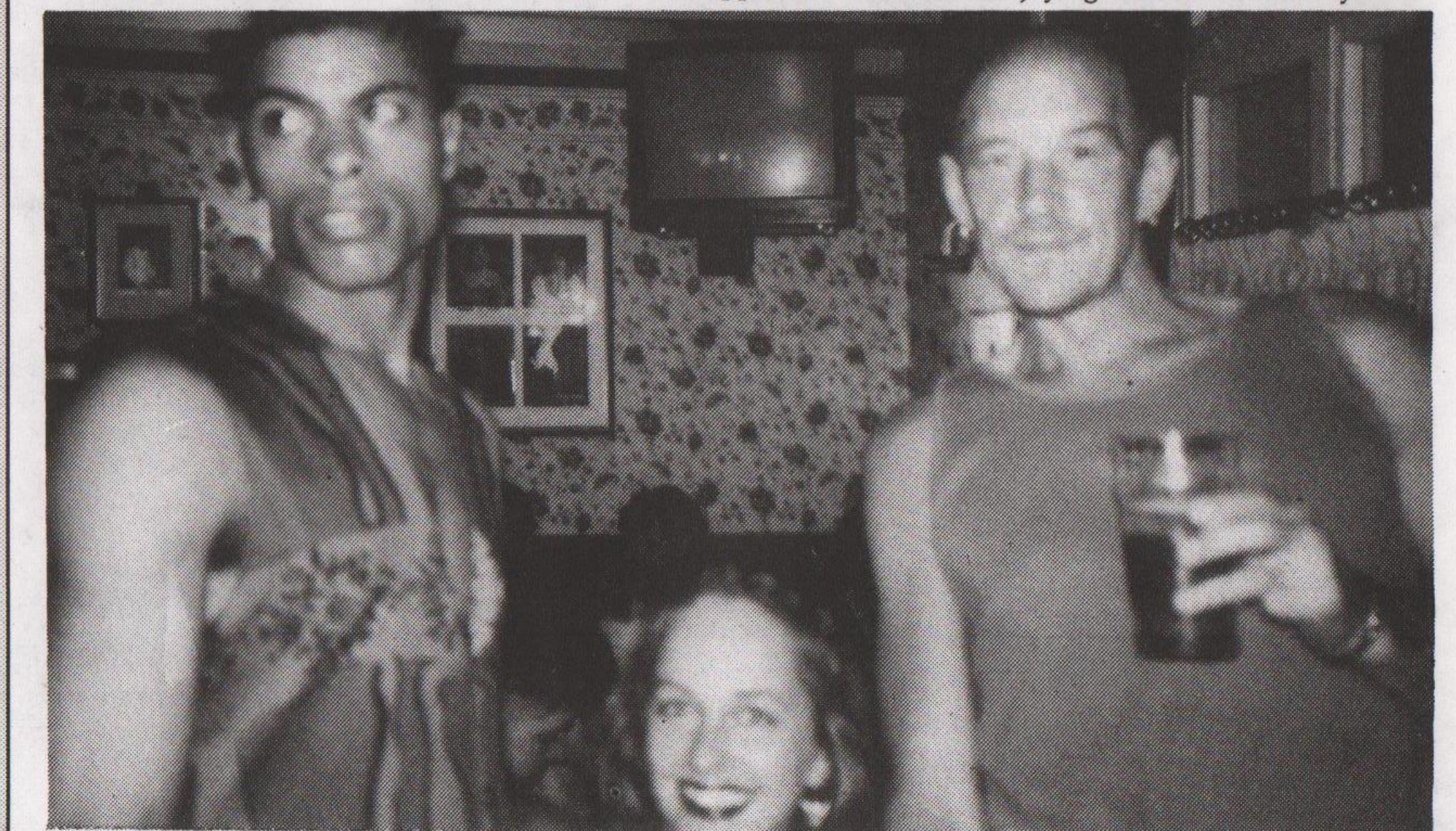
From then our relationship has gone from strength to strength. There have been times when complications; opinions and remarks from those close to us, have looked as though they may tarnish what we have, but we have risen above that. There has been depression, hurt and tears but we let our happiness over-ride the badness. The definition of badness being what others think and say, not us.

We are happy and we love each other - a perfect combination one would say. It should be that simple, it should be that easy. Surely the one great success in life is to enjoy it how you wish to? So why does this not apply, because we are both female?

SHYUB, Leicester.



Regulars of the Dover Castle and Pineapple Inn in Leicester enjoying themselves recently.



Something to say? If you would like to contribute to Outwrite! let us know. See address panel on page 8 for a discussion on the subject and length of your article. Letters are welcome too.

## LINCOLNSHIRE AIDS VOLUNTARY GROUP

Tel (0522) 513999

Mon, Wed, Fri 9am to 7pm  
Tues, Thur 9am to 5.30pm  
24 hour answerphone

For information, advice,  
support, buddying,  
safer sex etc

All calls confidential

Please call the above number or  
visit us in Lincoln at  
THE HEALTH SHOP,  
PORTLAND HOUSE,  
3, PORTLAND STREET,  
LINCOLN.

## HOMOPHOBIA: Causes and Counteractions

Main speakers: Christine Griffin (Dept. of Psychology, Birmingham University), author of 'Typical Girls? Young Women from School to the Job Market' who speaks on 'Homophobia and Anti-Lesbianism' and Simon Shepherd (Dept. of English, Nottingham University), author of 'Because we're Queers: The Life and Crimes of Joe Orton and Kenneth Halliwell'.

At a time when homophobia is possibly increasing, it is hoped that the day will provide an opportunity to examine the issue in a friendly and supportive environment.

Course fee: £13.50 (includes morning coffee, buffet lunch and afternoon cup of tea), State Retired Persons: £11.00, Receiving Benefits: £8.75

Last date for enrolments Tuesday 9th February, 1993.

Enquiries to The Secretary, Vaughan College, St. Nicholas Circle, Leicester, LE1 4LB tel: 0533-517368

## USE YOUR BUYING POWER



hiziki

Buying from countries & companies with a commitment to social justice - Hiziki has the widest range of wholefoods, fresh bread, take away snacks, organic fruit & veg, vegetarian convenience foods, and organic wine & beer in Nottingham. We also stock many natural remedies, cruelty free toiletries & environment friendly cleaning products. 10% Discount for UB40s, OAPs & Students on Wed/Thurs. Hiziki is a workers' collective.

15 GOOSEGATE, HOCKLEY

FOR POSITIVE CHANGE



# classified...classified...classified...classified...

**HOW TO REPLY.** Seal each reply in a separate envelope. Write the number of the Box you are replying to in the top right hand corner of each envelope. Place them in a larger envelope. **Enclose two loose first class stamps for each reply.** Address the outer envelope to **Outright**, stamp and send to PO Box 4, West PDO, Nottingham, NG7 2DJ.

## MENS PERSONAL

NOTTS/DERBYS, skinhead looks: gentle nature, young, tall and slim with good looks, seeks dominant guys to use me. I'm very sensual; you too? No photo required. ALA. Box 677

DERBY, 32, intelligent, straight acting, clean shaven guy, enjoys arts, cinema, gym, seeks younger guy with similar interests for friendship. Photo if possible. Box 678

LEICESTER, 36, HIV, good health, blue eyes, blond, not hairy, smoker, seeks guys 30-40, handsome, smooth, slim to medium for 1-1 relationship, I'm honest, romantic, sensitive. Photo please. Box 679

NOTT'M, 27, 5'9", Indian, slim, honest, sensitive, tache, non-camp, discreet, looking for friendship and maybe more. Photo appreciated, returned. Box 680

EAST MIDLANDS, guy, 36, horny, good looking, many interests, sincere, warm and caring, seeks honest guys 21-45 for new friendship for the New Year. ALA. Box 681. Box 681.

INTERESTING and good looking Indian guy, 24, moving to Leicester, wishing to seek attractive white guy, 22-30, to a possible 1-1 friendship or relationship only. Replies considered. ALA. Box 682

CHESTERFIELD, gay lad, 26, attractive, boyish looks, seeks older guy 28-40 for friendship, possible 1-1 relationship. Photo appreciated and returned. Box 683

SOUTH DERBYS, '38, 5'8", 10 stone, brown eyes, fair hair, likes nights in/out, seeks 25-45 active guy. White/black guys welcome for love and fun. Can accommodate. Photo please. ALA. Box 684

LEICESTER, 40s guy, non-scene, would like to make new friends for friendship and fun. Medium build, greying hair. Likes art, theatre, videos, anything. Prefers younger guys. How about it? Box 685

NOTT'M, 26, just emerging from a long time relationship, so nothing serious wanted. Likes sport, clubbing, cinema and lots more. If you can make me laugh then please write. Box 686

LEICESTER/MIDLANDS, 37, 5'10", 11 stone, HIV+, fit, good body, smoker, seeks reliable weight training partner. I'm currently surrounded by lazy uninterested lazy gits. You're weights or mine. Box 687

INDIAN guy, 35, 5'7", slim, smooth, shaven from neck to toe, seeks white riders for friendship/relationship, 30-45. Will try anything safe. Unshockable. I passive, try me. ALA. Leics area. Box 688

NOTTS and near counties, guy, 43, short hair, tache, reliable, seeks other masculine, down to earth bloke(s) for

discreet safe fun. Box 689.

LEICS, dominant 50s wants submissive, over 21, to train fully as personal slave. Details with sae gets reply. Box 690.

EAST MIDLANDS, two naturist guys, slim, healthy and horny, seek mates for mutual massage, photography, occasional parties and fun in the buff. Dare you give it a try? Box 691.

NOTTS/DERBYS, guy, 29, tache, hairy, stocky built, wants guy 25-50. Must have tache or beard, can be overweight, balding. ALA. Photo appreciated. Can travel or accommodate. Box 692.

CUTE Asian guy, good looking, seeks someone to light the deep fires of his deepest desires, wacky guy to just cut loose with. Box 693.

FRIENDLY GUY, seeks fellow video enthusiasts for shared viewings and perhaps swapping. Also guys who

## MASSAGE

**Mature masseur offers invigorating, satisfying full personal body massage - stiffness relieved - in comfortable surroundings.**  
**7 day service. Low rates.**  
**Tel: (0773) 825230**  
**anytime for appointment or details of special offer.**

like 60s music, Abba, wanted. I am sincere, genuine and honest. All guys welcome. Anywhere. Box 694.

NOTTINGHAM: interested in forming a social group? Walks, theatre, concerts, cards, swimming, eating in/out? Your views welcome. Box 695.

DERBY, slim, attractive tv, 5'8", young 45, seeks special bi guy, 21-40, for fun, nights out/in and caring relationship. Interests art, photography, travel, pub, disco. Can accommodate. Photo please. Box 697.

LEICESTER, male, 39, honest, genuine, hairy, lonely, seeks younger friends for safe fun/friendship/socialising etc, maybe more. Write and make my New Year a Happy one. Can accommodate. Box 698.

NEWARK, 20 year old, 5'11", wishes to meet 18-23 for friendship. Interested in racket sports, computers, nightclubs, travel, swimming and socialising. Please enclose photo with letter. Box 699.

LEICS, 35, dark hair, 5'8", was

married, quiet, honest, enjoys conversation, meals in/out, clubs, squash. Looking for friendship, maybe more with dark, preferably hairy man, 28-35. ALA. Photo if pos. Box 1001.

EAST MIDLANDS, overweight guy seeks guys of any age/colour/build for fun and friendship. Anything goes, so why not write for early meeting? Groups/couples/bi's welcome. ALA. Box 1002.

NOTTINGHAM, 23, straight acting, seeks 21-30, non-camp, for nights out, fun and friendship. Must be non-scene. Genuine replies only. ALA. Box 1003.

DERBY/ANYWHERE, sincere, loving guy, 33, non-scene, interests cinema, rambling, having fun, seeks honest, caring guy 25-38 for friendship and hopefully 1-1. Photo please. ALA. Box 1005.

GOOD LOOKING young man required for amateur photographer. Photo required. Box 1007.

NOTT'M, 43, tall, slim, lively, sociable, sensitive, enjoys singing, cycling, radio and junk. You: possibly younger, certainly young at heart, open minded, caring, fun to be with. ALA. Write soon. Box 1008.

MANSFIELD, 27, seeks friends/possible 1-1. Me average height, dark hair, tache, enjoys going out, staying in, and life in general. Similar age or younger. Photo please. ALA. Box 1009.

LEICESTER, male, 34, very shy, seeks caring man 21-30 for 1-1 relationship. Enjoys computer games and reading. First time advertiser. ALA. Box 1010.

LEICESTER, deaf guy looks for any guys for 1-1 relationship, and must be honest and kind and accept older guy for love. Any ages, any race. Write me. Box 1011.

KETTERING/ANYWHERE, Are you homeless or lonely? Attractive and affectionate 40 year old seeks slim, cute guy in 20s as live-in partner. DHSS welcomed. Frank letter and photo ensures reply. Box 1012.

NOTT'M, two men, 40s, wish to meet someone 21-25 for friendship and outings. Box 1013.

DERBYSHIRE, 6'7", slim build, smooth body, skin head. Interests badminton, hiking, weekends away, travel, cooking. Good looking, seeks good looking guys 21-35 for fun and friendship, pos 1-1. ALA. Box 1014.

LEICS/EAST MIDLANDS, 32, slim, blue eyes, intelligent, passive, friendly, seeks younger active lover for 1-1 who enjoys art, music, nights in/out, GSOH and is a slim built professional. ALA. Box 1015.

LOUGHBOROUGH guy, 25, handsome, seeking no one older than myself for great time and lots of fun. Non-camp, sense of humour, but like to

## HYSON GREEN WHOLEFOODS

**Mon-Sat 9.30-6**  
**(Thurs/Fri till late)**

**WE SELL ENVIRONMENTALLY SAFE & CRUELTY FREE CLEANERS AND TOILETRIES, A GOOD SELECTION OF HERBS & SPICES, FRESH BREAD AND A WIDE SELECTION OF SNACK FOODS.**

**ORDERS TAKEN**

**72 RADFORD ROAD**  
**Tel: 702056**

**BARRIE & JULIAN GRIFFITHS**

**SOLICITORS**

**5, Clarendon Street,**  
**Nottingham NG1 5HS.**  
**Telephone (0602) 412622**  
**After hours (0602) 602324**

cuddle up at home. ALA. Box 1016.  
SHEFFIELD, sincere uncle, 45, seeks sensitive smooth, cute nephew, not too tall, any race, to cherish. Must be non-smoker. Frank letter and photo appreciated. Discretion assured. Box 1017.

TWO ATTRACTIVE guys into safe 3-way fun. Blacks or Bisex welcome. Can travel or accommodate. ALA. Box 1018.

NOTTINGHAM guy, 29, smooth, seeks inexperienced guys, early 20s, varied interests. Black guys welcome. Photo appreciated. ALA. Box 1019

NOTT'M. Would you like to start the New Year with me? Me: 36, non-

## NOTICE BOARD

▼ **Nottingham Bisexual Group**  
Meets on the 2nd and 4th Thursdays of each month at 7.30pm, Room 3, ICC, Mansfield Road, Nottingham.

▼ **Nottingham University**  
The University Lesbian, Gay and Bisexual Society meets every Wednesday termtime at 7.30pm in the Large Meeting Room, first floor, Portland Building. Non-students welcome. Contact through UNU Lesbian and Gayline: see helpline panel.

▼ **Mature Guys**  
A gentleman has offered the use of his house two days weekly to anyone wanting to start a group for mature gay people in the Corby/Kettering area. Reply to Outright, Box 753.

▼ **University of Derby**  
The Lesbian, Gay and Bisexual Society meets every Thursday at 8pm at Green Lane College (Metro Cinema). Phone 0332-293953 10am-2pm week days for more info.

▼ **Nott'm Trent University Lesbian, Gay & Bisexual Society**  
Meets every Monday in termtime at 7.30pm at the Peacock, Mansfield Road. For further info contact Justin on 0602-851405.

▼ **Loughborough**  
Loughborough Womens Bar. First and third Tuesdays, 8.30pm onwards at Loughborough Labour Club, Fennel St. Tel: 235610. All women welcome.

# classified...classified...classified...classified...

camp, romantic, variety of interests. Looking for friends and possible 1-1. You: 30-60, similar. ALA. Box 1020.

SHEFFIELD/DERBYS/ANYWHERE, gay male 40s, handsome, straight looking, slim, active, caring, loving, trustworthy, into workouts, travel, countryside, gay videos, seeks similar 21-32 for friendship, visits. Hopefully 1-1. ALA, promise! Box 1021.

S.YORKS, mature student, 30, average looks, build etc. Seeks that special guy for nights out, lots of nights in, pos 1-1. Brains more important than looks, aged 21-35. ALA. Box 1022.

MANSFIELD, young male looking for experienced guys for helping hand. Slim beginner seeks friendship, pos 1-1 with other guys between 21-35. Willing to try anything! Photo/phone if pos. Box 1023.

NORTHANTS, young green eyed lad, 21, needs someone to teach him a good time. Can anyone help me? I'm good looking and very horny so please try me. ALA. Box 1024.

DERBY, 27, professional male looking for under 25 who needs to be looked after. Me, average looks, own home and transport. You, good looks (?) and fun loving who needs a home. Box 1025.

## OUTPOST!

You can have Outright delivered monthly to your door in a plain brown envelope. Especially useful for keeping up with the classifieds. Send a £4 cheque/postal order for 12 issues to Outright Box 4, West PDO, Nottingham, NG7 2DJ.

## WOMENS PERSONAL

DERBY/NOTTS, easy going, fed up, 40ish. Attractive/humorous lady seeks fun loving lady with staying power. Enjoys music, walking, romantic nights and fun days. ALA. Box 757.

NOTTS, young looking 41, non-scene, warm, caring, loving, runs own business, own place, seeks lady 35-45 for friendship, poss relationship. Photo appreciated. ALA. Box 758.

GAY WOMAN, 30, looking for feminine lady for friendship with view to lasting relationship. Good sense of humour. I love music, on/off scene. Reply now for Christmas romance. Box 759.

SENSUAL, attractive, bisexual woman, 23, wants outgoing, uninhibited woman for erotic friendship. Must enjoy clubs, good conversation, toe sucking. Photo essential. Out and proud. Nott'm area. Box 760.

DYKE wanted for long nights of passion, red hot sex and ballroom dancing. Must be 35 and over. Box 761.

OUTGOING, fun loving, feminine, 26 year old seeks lesbian who is intelligent, feminine, non-smoker and who values a canny relationship. Adventure, romance, humour guaranteed. Photo appreciated. ALA. Nott'm/East Mids. Box 762.

LEICESTER, gay female, 20, enjoys cinema, music, eating out, reading, walks, laughter and having a good time. Seeks similar for friendship/relationship, possible 1-1. Photo appreciated. ALA. Box 763.

NOTTS, lesbian, 22, non-smoker. Likes reading, long walks, music, beer, adores cats. Loving, caring, passionate, seeks similar. Age not important for friendship, poss relationship. Photo appreciated. Notts/Derby area. Box 764.

GAY FEMALE, 30, honest, caring, loving, looking for a feminine, loving

woman for lasting relationship. I'm attractive, feminine. No bi's. Photo appreciated. Box 765.

LEICESTER/ANYWHERE, genuine, caring lesbian, 29, enjoys cinema, theatre, books, music, nights in/out, seeks sincere, down to earth woman with sense of humour, 25-38 for friendship, poss relationship. Box 766.

SINCERE lesbian, 33, seeks genuine, caring woman with sense of humour for friendship/relationship. Must be non-smoker. Interests include theatre, cinema, eating out and music. Lincs/anywhere. Can travel. Box 767.

LESBIAN COUPLE in stable relationship looking for socialising. We enjoy travel, good food, theatre, cinema, music and much more. Non-smokers preferred. Box 768.

STUDENT, 22, caring, sensitive, boyish lesbian seeks interesting people for fun, friendship, laughs, fun, maybe more. Who knows? Likes sport, music, pubs. Sense of humour essential. ALA. Box 769.

NOTTS, professional, 33, non-smoker, non-but, non-scene, with traditional values. Interests tennis, outdoors, theatre. Seeks feminine partner 28-38 for sincere friendship. Good conversation and sense of humour essential. Box 770.

LEICESTER, female. I'm a 20 year old blonde bombshell new to the scene. Into pubs, clubs, theatre, long walks, looking for sensitive, caring, fun, romantic friendship, possibly more. ALA. Box 771.

NOTTINGHAM, young 42 lesbian, enjoys cinema, videos, discos, getting out and about, sense of humour, non-smoker, loves music, for 1-1 relationship. Box 772.

LESBIAN, HIV+, looking for social life/training partners. Into weights, running. Dislikes smoking-scene-sympathy. Happily attached; couples welcome. East Midlands. Box 773.

VISUALLY ARTISTIC, intelligent, sensitive, hurt, 30 year old, Leo, into self development, reading, cycling, loves words and music. Looking for an honest friendship, possibly relationship. Guilty smoker, student. Nottingham area. Box 774.

CARING FEMALE, early 30s, fun loving. Seeks lady 26-40 for friendship/possibly romance. Photo please. Leicester area preferred. Box 775.

FEMALE, 31, show organiser/writer, values openness and honesty, seeks genuine, caring, non-scene, feminine lady with a sense of humour and fun for friendship, maybe more. ALA. Box 776.

## REPLYING TO AN AD?

Please read instructions, top of page 11. Replies without 2 first class stamps for each box number reply will not be forwarded.

NOTTINGHAM, 43, smoker, seeks lesbian, 40s, intelligent, into self awareness, honesty and openness, for journey of further self discovery! Photo appreciated. Box 777.

FOUR GORGEOUS lesbians, 18-25, looking for lesbian singles/couples for nights out in pubs/clubs in different areas. Only lesbians need reply, preferably not from the Notts area. ALA. Box 778.

## MIXED PERSONAL

HAPPY MARRIED couple, exploring new avenues, seeks company and long term friendship of AC/DC female, married/single. Box 750.

TV, 30, stylish, very convincing, size 12, not tacky, educated, sensitive and caring, seeks female partner for love, fun and good times. Notts/East Midlands. Box 751.

## HELPLINES

**DERBY FRIEND**, Wednesdays, 7-9.45pm. Tel: 0332-49333.

**DERBY LESBIAN LINE**, Wednesdays, 7-9pm. Tel: 0332-41411.

**DERBY AIDS LINE**, Monday-Friday, 7-9pm & Thursdays 2-4pm. Tel: 0800-622738.

**LEICESTER LESBIAN/GAYLINE**, Monday-Friday, 7.30-10.30pm. Tel: 0533-550667.

**LEICS AIDS SUPPORT SERVICES**, Monday-Friday, 9.30am-5pm. Tel: 0533-559995.

**LINCOLNSHIRE GAY SWITCHBOARD**, Wednesdays & Thursdays, 7-10pm. Tel: 0522-569510.

**LINCS AIDS VOLUNTARY GROUP**, Mon, Wed, Fri, 9am-7pm, & Tues, Thurs, 9am-5.30pm. Tel: 0522-513999.

**NOTTINGHAM LESBIAN & GAY SWITCHBOARD**, Monday-Friday, 7-10pm. Tel: 0602-411454.

**NOTTINGHAM LESBIAN LINE**, Monday & Wednesday, 7.30-9pm. Tel: 0602-410652.

**NOTTINGHAM FRIEND**, Tuesdays, 7-10pm. Tel: 0602-474717.

**NOTTINGHAM AIDS HELPLINE**, Monday-Wednesday, 7-9.30pm. Tel: 0602-585526.

**NOTTINGHAM UNIVERSITY LESBIAN & GAYLINE**, termtime Mondays, 7.30-10.30pm. Tel: 0602-514999, internal 4999.

## COPY DATES

No. 34: 30th January.  
No. 35: 27th February.  
No. 36: 27th March.

**HOW TO PLACE AN AD.** Complete and return the form below. Write clearly please. Maximum 30 words. Your ad is **FREE** of charge. Outright reserves the right to refuse or amend ads. Each ad will appear in one issue (or two if space permits). Good luck!

## CLASSIFIED ADS

Complete and return to **Outright**,  
PO Box 4, West PDO, Nottingham, NG7 2DJ.


Name.....  
Address.....  
..... Post code.....