

CRUISING THE CLASSIFIEDS

This month is a milestone for OUT-RIGHT classifieds. For the first time they exceed one hundred new ads in one edition.

The first classifieds appeared in OUT-RIGHT in August 1991. There were three men's and one woman's. Since then the numbers have increased monthly. Naturally all ads are treated confidentially and all replies are forwarded unopened. But numerical records are kept and a few recent statistics might interest readers who like to cruise the classifieds.

23% of adverts got one reply, 34% got two to four replies, and 12% got five or more. The largest number of replies to any one ad was 16. 31% of adverts attracted no replies. The numbers of mixed personals was too small to assess.

What is the secret of a successful ad? Wouldn't we all like to know! There seems to be no pattern, but a romantic disposition does seem to attract both men and women.

Formerly Outright ran ads twice when space allowed, but space hasn't for several months. Rather than restrict the number of classifieds, we have made the print smaller to fit more ads in. For those who want to make their ad stand out, to send a greeting, or to sell or swap, we now offer semi-display at a small charge.

Finally, accommodation ads with phone numbers do better than box numbers, so include your phone number if you can. And - carry on cruising!

Part-Time Administrative Worker

(Maternity Cover)

Nottingham Women's Centre

Scale 1/2 Salary: £5,229 - £9,294

Salary at age 21: £7,683 - £9,294

Hours of work: 18 1/2 hours per week

We are looking for a Part-Time Administrative Worker to work alongside and in conjunction with other paid and unpaid workers to provide an administrative service for Nottingham Women's Centre. This post is a short term appointment to cover maternity leave and is expected to end on 17 January 1994.

You will need to possess:

- a good basic education;
- a commitment and ability to work in an anti-discriminatory way;
- an ability to work collectively with paid and unpaid workers.

The City Council welcomes applications from all sections of the community. We particularly encourage applications from black women, older women, lesbians and women with disabilities.

This post is exempted for women only under the Sex Discrimination Act 1975 Section 7 (2) E.

Application forms and further details are available from the Personnel Manager, Chief Executive's Department, The Guildhall, Nottingham NG1 4BT. Tel: (0602) 350700. Minicom service office hours only. Answerphone after office hours. **Please quote ref. LC/0519** on all correspondence and enquiries. **Closing date: Noon 12 July 1993.**



An Equal Opportunity Employer



City of
NOTTINGHAM

NOTICE BOARD

▼ Women's Coffee Bar, Leicester.

Leicester Lesbian & Gay Resources Centre, every Wednesday, 12-2pm, All women welcome!

▼ Making Movies Seminar, 15th July.

One day seminar: topics include producing, script writing, directing, shooting, music, financing, publicity, distributors, deals, festivals, sales. Info: 021-359 3979 or (0902) 714679.

▼ Women's Spiral Dance, Sat 17th July.

A day of circle dance to raise money for women in former Yugoslavia. No experience or partners needed. Queens Walk Community Centre, Meadows. Tickets/Donations: 13 Farm Close, Clifton, Nott'm, NG11 8DN. (0602) 405198. Book early, Women only.

▼ Women Reclaim the Night! 17th July.

Protest march, Saturday, assemble outside Pavilion, the Forest, Nottingham, 8.30pm, torches, banners, posters. Info: Pauline: 750215, Kathy: 702879.

▼ Sunday Breakfast, 11th July, 10am-2pm

At the Croft Family Centre, Cooked breakfast inc. Vegan/vegetarian for £1.50, Sunday papers. Albert Road, Alexandra Park, off Woodborough Road, Nottingham).

▼ Lesbian Walk, Leicester, July 25th,

at Jubilee Woods, Leicestershire, meet at 45 King St. at 11am, transport provided, easy pace, children and dogs welcome, bring a packed lunch. For more details: (0533) 547412.

▼ Gay Men's Week, 24th Sept-1st Oct.

Wasdale Hall, Westwater, Lake District, Spend time with 30 other gay men, hill walking, non-competitive games, circle dancing, massage, you name it, we do it. Rates all in from £80 upwards.

Find out more from ECC, 21 Devonshire Promenade, Lenton, Nottingham, NG7 2DS.

▼ National Bisexual Conference.

From 1st to 3rd October, University of Nottingham. Wide range of workshops and discussions. Further details from BICON, The Rainbow Centre, 180 Mansfield Rd, Nottingham, or contact Jo (06021) 703553.

▼ Derby TV Group

Meets every Wednesday at the Refreshment House, Derby. Details: 0332-298324.

▼ Volunteer wanted for lesbian smoker

40 year old lesbian smoker wants someone similar to go to cinema/for walks with, once a week/fortnight. Travel expenses met plus small fixed remuneration. More info. from my support worker, Manda Maple 0602 580483 office hours.

▼ Lincs Outreach

Lincolnshire now has two outreach workers based at the Health Shop at Portland Street, Lincoln. They are Ian Borrill and Mrs M Hutton, who work with gay men and lesbians respectively. They can be contacted on 0522-513999 during office hours.

▼ Well Sexy Women

Lesbian safer sex and cultural evening, Friday 30th July in conjunction with the Black Lesbian and Gay Group, BHAS and the Lesbian and Gay Centre, Leicester. Ring Quinling on 0533-855955 or Jill on 0533-547412.

▼ Loughborough Women's Bar,

Meets 1st & 3rd Wednesdays, Loughborough Labour Club, Fennel St. (nr bus station) from 8.30pm onwards. All women welcome. Tel 0509 213894 for more information.

MACEDON TRUST

NOELLE HOUSE

requires

Female Project Worker

24 hour week

Salary: £6,319.80 pa

Noelle House is an 8 bedded hostel which aims to meet the needs of single homeless women to include:

*lesbians, singles & couples

*black women

*women who are HIV+ and/or living with AIDS

Closing Date: 16 July 1993

Job Descriptions and further information from
Macedon Trust, PO Box 42, West PDO,
Nottingham NG7 4BZ
Telephone 0602 - 708702

This post is available for women only under the Sex Discrimination Act 1975 Section 7 (2) d.

Macedon Trust, a registered charity, has a Christian foundation with which employees should be comfortable. It is also committed to achieving Equal Opportunities at all levels of its work.

July 1993
Issue 39

outright!

free!

for gays and lesbians in central england

PRIDE BREAKS RECORDS



Photo: Patrick McCrory

LASS MOVES PREMISES

Leicestershire AIDS Support Services (LASS) have recently been awarded a £200,000 grant from Leicestershire Health Authority to buy larger premises, very close to their previous base. With over one hundred volunteers, for the last two years LASS has worked from cramped and over-crowded offices and at times up to sixteen volunteers and staff have shared an office space designed for only six.



Photo: Richard McCance

AIDS Forum will also operate from the new premises and it is hoped to develop more facilities including advice sessions and benefit drop-ins. The current phone and fax numbers remain unchanged.

WALK OUT!

Members of several lesbian and gay groups walked out in disgust from a meeting with Nottingham City councillors and officers on 24th June, stopping only to tear up copies of the Council's Equality Programme Review.

The meeting, at the Council House, was to discuss the Review, a long and detailed document. "There was not a single mention of the lesbian and gay community or of any issues raised at previous consultative meetings held during the past nine years" said Chris Richardson, one of those who walked out. Members of Outrage, the OUT HOUSE Project, and Friend were among the few who knew about the meeting and were able to attend at short notice.

(Continued on page 3)

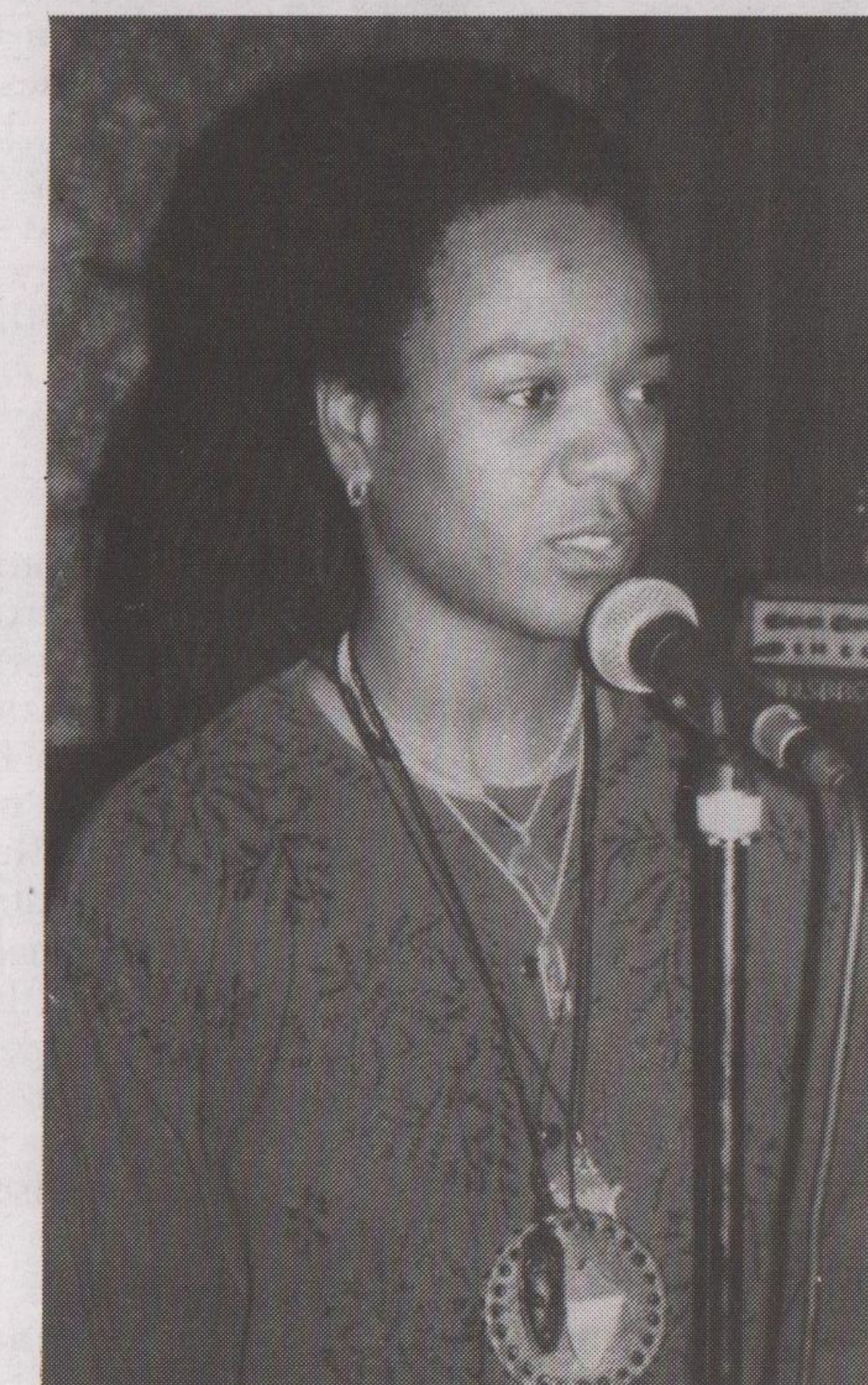


Photo: Richard McCance

Quibilah Montsho, performance poet recently seen at the Outhouse Festival, in Nottingham appears at the screening of "Well Sexy Women", at Leicester Resources Centre, presented by Black HIV AIDS Forum, 30th July, from 7.30pm 'til late. See Noticeboard, inside.

TRIANGLES

North Sherwood Street, Nottingham

Appearing at Triangles

Friday 16th July

THE ROCKETTES

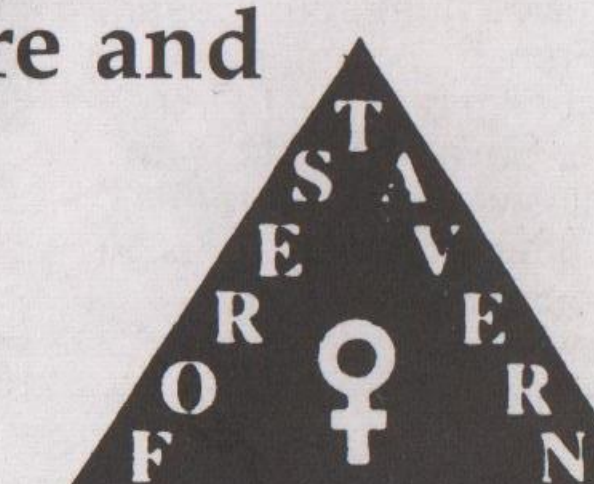
Female Vocal/Comedy Duo

£1.50 members £2.50 Guests

Disco Before and After



TRIANGLES



TRIANGLES

Published by Naff Co-operative Ltd, PO Box 4, West PDO, Nottingham, NG7 2DJ. Tel: (0602) 780124.
Printed by Anvil Press Ltd (TU) (a workers co-operative), 105-107, Nottingham Road, Derby, DE1 3QR. Tel: (0332) 298213.

JEWISH AND GAY

The Thirteenth International Conference of Lesbian and Gay Jews took place in London recently. Andrew Edwards attended and this is his report.



"I booked for this conference in January and then had a three month wait until it took place. During this time I realised that I had come out as a gay man but not as a gay Jew. In my twenties I turned my back on my religion because I could not square the two. However, over the last year I have become more reconciled with my culture after I made contact with the Jewish Lesbian and Gay Group via their national helpline. They have given me the signal that it is fine to be young, Jewish and gay and this made my heart soar.

I came to the conference hotfoot from co-organising a Gay Men's Week in the Lake District and drove through the night arriving at midday to stay in the ornate, cavernous, but spiritually dead hotel in the centre of London's Docklands. At first I found it difficult to connect with the people there for I was missing the close presence of 35 gay men. I supposedly had an automatic something in common with 400 other Jews from different parts of the world yet I felt a stranger and cut off.

The evening circle dancing performed by a live Klezmer band restored my spirits and provided the link for me - circle dancing is a feature of all gay men's weeks. Over the weekend I especially appreciated a workshop on 'Shame and how to recover from it' by Gershon Kaufman and by the time the Monday close of conference arrived, I discovered that I'd made friends after all.

The overall effect of the conference was to enlighten me about how, though special to be Gay and Jewish, and Out and Proud, it is also ordinary and everyday too. I am glad I went. (For more information or support contact the National Jewish Lesbian & Gay Helpline, Mon. & Thurs, 7-10pm, 071 706 3123).

BROADWAY

Broad Street, Nottingham. Box office: 0602 - 526611

Being at Home With Claude

Dir: Jean Beaudin/Canada/1992/85 mins.

An already highly acclaimed and controversial psychological thriller about an intense love which eventually leads to murder. "Based on the stage play by Rene-Daniel Dubois, 'Being at Home with Claude' may rank as a Canadian entry to the New Queer Cinema. With a shockingly violent and undeniably erotic opening sex scene, this powerful feature explores the tortured soul of Shockingly, a male prostitute, and his desperate love for, and subsequent brutal murder of his lover Claude. Three days after the murder, Shockingly has turned himself in and undergoes a gruelling police interrogation..."

Friday, 2nd July-Thursday 8th July, Cinema 2, 6.00/8.15pm + 3.30 Sunday

Savage Nights (Les Nuits Fauves)

Dir: Cyril Collard/France/1992/126 mins.

Given added poignancy by the death of its director from Aids just days before it received numerous Cesars or French Oscars, including Best Film and Best First Film, Savage Nights is an explosive drama of the private emotional turmoil of a young bisexual HIV+ camera man. Splitting audiences with its portrayal of 'irresponsible' behaviour and unsafe sex, it is a bold and moving drama of love in the Aids era. Friday, 30th July-Thursday 5th August, Cinema 1, 6.00/8.30pm Friday, 6th August-Sunday 8th August, Cinema 2, 6.00/8.30pm + Sunday 3.30pm



SAVAGE NIGHTS (LES NUITS FAUVES)

BARING IT ALL FOR PRIDE



Photo: Patrick McCrory

Making their way to the parade, from Victoria Embankment.

THE MEN'S SEXUAL HEALTH PROJECT

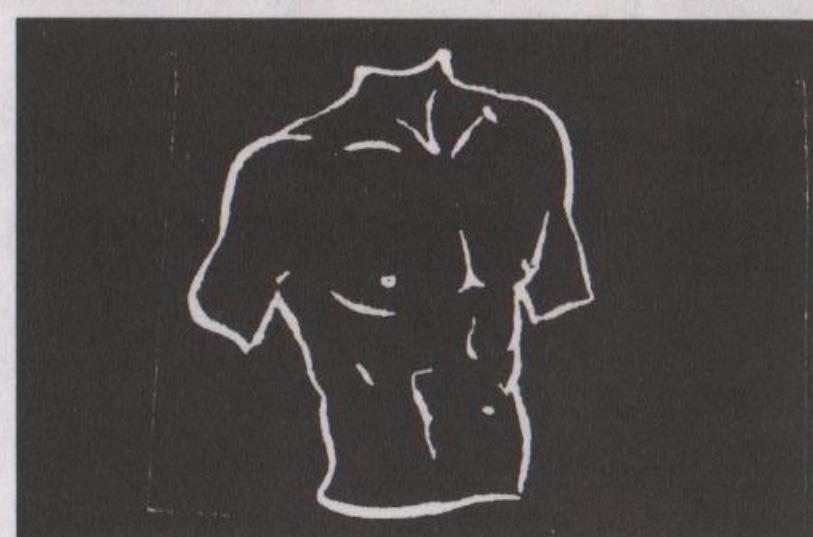
45, King Street, Leicester

ALL OUR SERVICES ARE FREE AND CONFIDENTIAL
YOU DON'T EVEN HAVE TO GIVE YOUR NAME

Available free to all men who have sex with men regardless of age, sexuality, race, religion, disability, or antibody status.

TRADE SAFELY

Do you like sex? We do. Do you use the Gay scene?
Do you cottage or cruise? Did you know that a gay man tests HIV+ every hour of the working week?
Did you know we can now do something about this?



TRADE is a new group of men who have sex with men who want to do something about the growing HIV epidemic.

FOR THE DATE OF OUR NEXT MEETING AT
45, KING STREET, LEICESTER, PHONE ANDY.
If you'd like to get involved, why not come along.

For more information phone Andy:
0533 541747 (office hours)

FREE CONDOM DROP IN

Opening times

Every Thursday 11.30am-2.30pm

Every Friday 11.30am-2.30pm

Second Saturday each month 12.00am-3.00pm

(No appointment necessary)

If you have difficulties visiting during these times ring 0533-541747 for an appointment free..... (and easy)

ABSOLUTELY FREE!

*A choice of gay safe condoms *Water based lubricant *Dental dams, latex gloves *Information, counselling and support on HIV/AIDS, sexuality, relationships, HIV testing, safer sex or any concerns about sexual health *Leaflets, safer sex videos, posters etc.

RECORD ROUNDUP

by Simon Smalley

Bouncey Castle

Yet again another ...er ...amply covered disco diva previously championed by the gay scene has hit the highspots of chartdom and large-scale success. Sybil, for it is she, on her third LP 'Good & ready' shows a substantial vocal performance in the tradition of pan-mouthed gay heroines such as Gloria Gaynor, Earlene Bentley, Phyllis Nelson et al. The 'up' tracks chug along with comfortable confidence, being ideal for playing as you buckle your boppin' boots prior to going out, with the slower cuts more suited for the post-club coffee comedown. Although, bar the title track, there's nowt mega outstanding here, given sympathetically chosen material Sybikins could avoid plummeting into the chasm of has-beenism that so many of her predecessors have disappeared without trace into.

Amateur Hour

Why is there such a pre-occupation with out of tune vocalists? A prime exponent of tuneless trash is Mr All Quiff And No Talent Harry Connick Jnr - admittedly he may be rather nifty at tinkling the ode ivories, but voice wise should just keep his gob shut! To tie in with the current UK tour he's released a greatest hits LP - whilst complaining he's fed up with being hailed as the nouveau Sinatra. Well, girl, I didn't hear you complaining when the cash was flowing tidal wave-esque into your bank account! And, pur-leaze! If you want to emulate a well known vocalist then at least copy one who could sing in the first place. Although not quite as out of tune as Frank Sinatra (sorry, Nick) he's pretty close and in recreating that style of monotonous mumbling, Junior shows his equal lack of originality. The great Oz has spoken!

Just Add Boiling Water

The perpetually inventive Jellyfish ares slurping back again with their second album 'Spilt Milk'. Although not as instantly popadelic as their debut, again it's as if they've visited a jumble sale of tape out-takes from albums by ELO, Queen and the Beach Boys and thrown them with a splash into the pool of pop. A giddy, sensurround sound of stylish super-duperness with sly twists skulking beneath each line proves that they're not just a kitsch '70s pomp-rock revival revue. All in all, Jellyfish are a joyous celebration of platinum pop that makes you feel like takin' yer clothes off and dancin' n-a-k-e-d round the garden - well, it does me, anyway!

.... And that's it till next time - ta-ra!

WOMEN'S WORLD CRICKET

Women's World Cricket takes place in Nottingham on Tuesday 20th July at the John Player Sports Ground, Nottingham, with India versus the West Indies. This is the event that the East Midlands Women's Cricket Association has been sponsoring with events at Triangles recently. All supporters will be welcome at the ground.



COACHES FROM NOTTINGHAM & DERBY
SATURDAY 10th JULY

KYM LAZELLE

Departures from Ritz's, Lower Parliament St, Nottingham
9.20pm & Green Lane Gallery, Green Lane, Derby, 10pm
For details phone Wayne 0332 - 203194

GAVANS AT THE DORCHESTER CLUB, TEMPLE ST, WOLVERHAMPTON
INFOLINE (0902) 716676. Right of admission reserved.

CHANNEL 4

Channel 4 promises some interesting features, new and old, during the summer months, from Derek Jarman to Lily Savage.

Summer's Out is a fortnight of lesbian and gay films and features, beginning with **Torch Song Trilogy** on Sunday 15th August and continuing with **Desert Hearts** and programmes on the gay language, Polari, two miners' wives who fell in love during the 1984 strike, the Sydney Lesbian & Gay Mardi Gras and much more.

Derek Jarman's **BLUE**, his personal exploration about death, AIDS and his own fight against blindness, consists of 75 minutes of blue screen and stereo soundtrack. It's being shown in cinemas first and then on Channel 4, with a simultaneous stereo soundtrack on Radio 3, without a single interruption for adverts.

See future editions of **Outright** for programme details.

WALK OUT!

(Continued from page 1)

"They sent us a document which ignores our needs. Nothing about harassment, succession rights in housing tenancies, community facilities, staff training, awareness training or any issue we've raised in the past" said Kathy, an Outrage supporter, "it was a disgrace". The walkout got wide spread publicity in the local press and radio the next day.

METRO CINEMA

Green Lane, Derby: box office (0332) 40170

CHANGING OUR MINDS

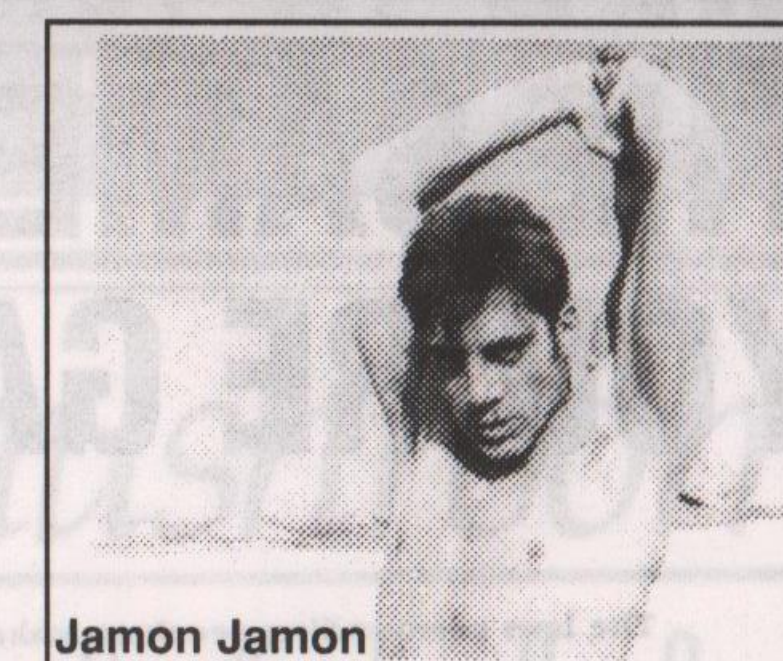
A fascinating tribute to the woman who confirmed that homosexuality was not a disease, and changed attitudes in the medical profession. Using rare archive footage, and revealing interviews, the film charts this courageous woman's life and uncovers a heart-warming chapter in gay and lesbian history.

Tuesday, 6th July, 6.30pm

CLAIRE OF THE MOON

Fasten your seat belts for the longest denial of desire, delay in seduction and dodgiest of stereotypes. Yes, we have the neurotic blonde, straight femme and intellectually constipated, dark butch dyke, trapped in a writer's retreat and in their own preconceptions. As predictable as Mills and Boon, soapy as Dynasty, a trashy script and excessive tension, it's great.

Tuesday, 13th July, 6.30pm

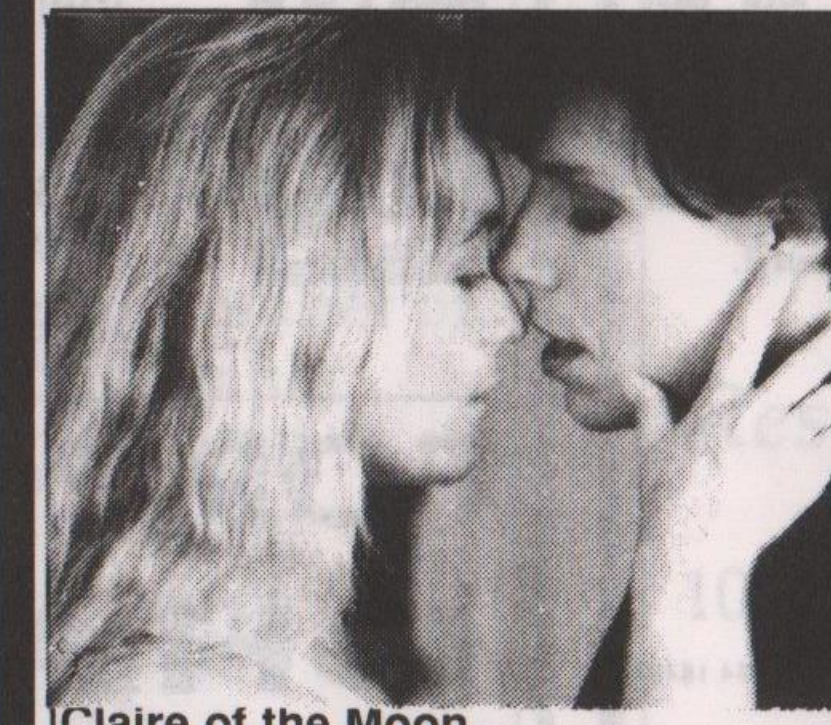


Jamon Jamon

JAMON JAMON

A small Spanish village, noted only for its underwear factory and brothel. Silvia, the pregnant daughter of the brothel's Madam and her boyfriend agree to marry. Hearing of this, the boyfriend's mother Conchita, in a desperate attempt to prevent the marriage, introduces Silvia to sex-machine Raul, but then seduces him herself. Director Bigas Luna couples and uncouples these lusty characters in a delicious and wholly improbable farce, charged with striking images which ridicules machismo, latin family values and stretches credulity to breaking point. Hailed as the name for the future after the release of this astonishing comedy, Juan Jose Bigas Luna is set to take the mantle of Pedro Almodovar as Spanish Cinema's most exportable talent.

Friday 30th July-Thursday 5th August, Mon-Thur.8pm, Fri. & Sat. 8.45pm, Sun. 8.15pm.



Claire of the Moon

ZRAZY FOR YOU!

Dublin duo Zrazy, who played Nottingham earlier this year and Pride '93, are eagerly awaiting chart success with debut single, 'I'm in love with Mother Nature', a release which has presented Carole Nelson and Maria Walsh with a number of obstacles to overcome. "The single was first released last summer," Carole Nelson begins, "and when we approached Polygram for distribution in England, they refused saying it was too political. It just wasn't what they wanted to hear - the song is too damning, too utterly critical of everything everyone's grown up with".

However, Virgin Records appeared more open minded and took it on board. Whilst there are no distribution problems in Ireland, sexual discrimination cropped up instead. They believe it's because they're lesbians that Irish Television disallowed the showing of the Zrazy video. "It's just that lesbianism has been so unheard of here," remarks Maria Walsh. "They simply don't know how to deal with it. They're used to gay men of course but in the world of homosexuality, lesbians are still bottom of the heap. Right now Zrazy are intent in trying to overturn the TV station's decision. You can help this duo make the bigtime by pestering Virgin records for a copy of 'I'm in love with Mother Nature', which should be in the shops in England by now. (Thanks to Irish Gay Community News for this story).



HYSON GREEN LAW CENTRE



119 RADFORD ROAD
(opp. Asda) Telephone: 787813

OPENING TIMES

Monday, Tuesday, Thursday &
Friday 10am - 1pm
and Thursday evening 6.30 - 8pm

**WE PROVIDE FREE LEGAL
ADVICE AND**

REPRESENTATION ON...
SOCIAL SECURITY, EMPLOYMENT,
HOUSING & IMMIGRATION/
NATIONALITY LAW

HYSON GREEN LAW CENTRE
Improving Access to Justice

LIFE IS *not* THE SAME IF YOU'RE GAY.

The laws surrounding pensions make it difficult for unmarried couples to plan for retirement. When you are gay, it is not only the law that makes it difficult, it is the misconceptions surrounding intestacy and trusts. In other words, if you think you may ever want a partner to benefit from your pension plan in the event of your death you cannot leave it to chance.

Your independent financial adviser should not only inform you of the costs involved of any particular pension policy, but the size, strength and past performance of the pensions office. Financial advice however, does not stop there.

To us, getting it right seems surprisingly simple. We do not charge and our service is confidential.

GAY MONEY
STRAIGHT ADVICE

ima
ivan massow associates
195 Wardour Street - London W1 Tel: 071 494 1848 Fax: 071 494 1849

USE YOUR BUYING POWER



Buying from countries & companies with a commitment to social justice - Hiziki has the widest range of wholefoods, fresh bread, take away snacks, organic fruit & veg, vegetarian convenience foods, and organic wine & beer in Nottingham. We also stock many natural remedies, cruelty free toiletries & environment friendly cleaning products.

5% Discount for UB40s, OAPs & Students on Wed/Thurs.
Hiziki is a workers' collective
15 GOOSEGATE, HOCKLEY

**FOR POSITIVE
CHANGE**

Maria Walsh & Carole Nelson of ZRAZY

BLACKTHORN BOOKS

Leicester's Radical Bookshop

Now in stock

"JEAN GENET"

by Edmund White

70, High Street, Leicester.
(0533) 621896



Photo: Jacky Russell

Jacky King (right) describes herself as '40ish and of challenging appearance'. She has led a varied career as Art School graduate, boutique designer partner, free-lance designer in England and America, restaurateur, hotelier and Art & Design Lecturer.

A FREE SERVICE FOR GAY MEN IN NOTTINGHAM

Informal and confidential counselling on a range of issues around HIV testing, safer sex and sexual well-being in general.

- *free condoms
- *free KY
- *Hepatitis B vaccination
- *meeting place for groups
- *videos
- *no appointment necessary

All in comfortable surroundings at
**NOTTINGHAM
HEALTH SHOP**

Broad Street, Hockley, Nottingham
Drop in Mon-Fri 9am-5pm or
ring Ashley on (0602) 475414

TOGETHER WE ARE STRONG!

Women's Circle Dance in the Meadows, Nottingham.

Following our article on Circle Dancing for gay men, readers might be interested to know that there are circle dance groups in Nottingham and Loughborough which are led by a lesbian.

The Nottingham group meets first Wednesday of the month at Queens Walk Community Centre in the Meadows, and third Wednesday of the month at the International Community Centre on Mansfield Road. The Loughborough group meets on the second Tuesday of the month at Fearon Hall. All groups are suitable for beginners and women of all ages, and you don't need to be fit or energetic to participate.

Circle dancing is wonderfully exhilarating and also very relaxing. It brings about a great sense of community and peace within the group and is also great fun. Further details about the womens groups from Chrisandra (0602) 863804.

WANTED!

Full time & part time cooks. Forward CV's and all relevant information. This is for a forthcoming shop that is to open in Nottingham very soon. Vegetarian and non vegetarian food to be available. For more information, write to 'Positive Images', Outright, Box No. 4, West PDO, Nottingham, NG7 2DJ.

BAD ATTITUDE,

If you subscribe you will be sure of getting your bi-monthly dose of healthy negativity. Features this issue include Striking Women, Ritual

Abuse, The crime of being Poor, Camden Lesbian Centre, Southall Black Sisters & more. £5.00, (6 issues) Bad Attitude, 121 Railton Rd, London, SE24OLR, 071 978 9057.

DERBY AIDSLINE

Worried/confused about
HIV/AIDS?

For confidential advice and
information, phone FREE
on Derby Aidsline

0800 - 622738

Mon - Fri 7 - 9pm
Thurs 2 - 4pm

LINCOLNSHIRE AIDS VOLUNTARY GROUP

Tel (0522) 513999

Mon, Wed, Fri 9am to 9pm
Tues, Thur 9am to 5.30pm
24 hour answerphone

For information, advice,
support, buddying,
safer sex etc

All calls confidential

Please call the above number or
visit us in Lincoln at
THE HEALTH SHOP,
PORTLAND HOUSE,
3, PORTLAND STREET,
LINCOLN.

mushroom

B.O.O.K.S.H.O.P

Coming Soon

"THE NEW JOY OF GAY SEX"

Reserve your copy now

10, Heathcote St, Nottingham,
NG1 3AA. 0602 - 582506

classified...classified...classified...classified...

HOW TO REPLY. Seal each reply in a separate envelope. Write the number of the Box you are replying to in the top right hand corner of each envelope. Place them in a larger envelope. **Enclose two loose first class stamps for each reply.** Address the outer envelope to **Outright**, stamp and send to PO Box 4, West PDO, Nottingham, NG7 2DJ.

MENS PERSONAL

DERBY, good looking, 32, slim, straight acting, non-smoker, bored with scene, seeks guy 22-45 for fun & friendship. ALA with tel no. Box 1489.

TALL, 6'2", dark, handsome (?) young scientist, 21, from East Mids with varied musical tastes & interests, seeks East/West (esp Wolves/Walsall) pen-pals, friends or poss 1-1 experimentation! ALAWP. Box 1490.

NOTTS/MANSFIELD/DERBY, gay guy, vgsch, A-Z interests incl pubbing, clubbing, music, cinema, wishes to meet new friends for good conversation, eating out & enjoying life. ALA Photo apprec. Box 1491.

NOTTS/MIDLANDS, man, 37, seeks similar or younger male for fun/friendship, possibly relationship. Photo helpful. Box 1492.

HAIRY GUYS sought by chunky man, 38, older pref but not essential. Cuddles & mutual pleasure assured. If you're very hairy let's get together! I'm caring, honest, have gsch. ALA. Box 1493.

EAST MIDLANDS. Michael, slim, medium build, 5'6", blue eyes, brown hair, tache, 35, smooth, very outgoing, seeking similar for weekends, friendship, love, 1-1. Photo if poss or phone. Box 1494.

LEICS/ANYWHERE, male, 30, interests incl swimming, cinema, theatre, clubbing, music, walks & enjoying life. Seeks guy 21-30 for friendship, poss leading to 1-1. ALAWP. Box 1495.

GAY GENT, 60, interests: discussions, bingo, League of Hospital Friends, gay films, magazines. Age not important, nor area but I live in Derby. Photos if like. Box 1496.

SHY bearlike indie type, 29, (almost back in the closet!) seeks unimintimating partner for swimming/weights/friendship/more? More interested in personality but photo would be cool. Sheffield or thereabouts. Box 1497.

LEICS, 35, 5'8", 10.5st, prof, caring, sensitive, intelligent, likes cinema, eating in/out, pubs, occas clubs, squash. Amongst other things seeks younger guy for sharing caring, loving, sensual exciting 1-1. Box 1498.

MIDLANDS, very good looking, tall, blind, tanned, sexy, great sense of humour, seeks active, muscular, dark male for lust. Photo ensures reply. Box 1499.

SPAIN, retired British author offers no-strings friendship to short, intelligent young man. You are probably down on your luck or need support. Please write to Box 1500.

NOTTM, 28, dark hair, 5'11", dry, acid, jazz, sinful, seeks 21-28 guys for hot fun and mind blowing stimulation. Photo apprec. ALA. Box 1501.

DERBYS, 43, tall, slim, blond, attractive, active but versatile, requires special person up to 50 who's attractive in looks & body. ALAWP. Genuine. Box 1502.

LINCS/ANYWHERE, 40, slim, seeks good safe fun, poss 1-1 with active older men. Photo would be nice, mine in return. Box 1503.

BOSTON, gay men want to meet others in town and area with view to starting home socials, pub crawls etc. Bi's welcome. Box 1504.

EAST MIDS/DERBYS/STAFFS BORDER, 29, passive, 5'10", tache, seeks active guy up to late 30s. Interests in leather etc for poss 1-1. Frank letter, photo please. Box 1505.

YOUNG, good looking guy. Fed up of being broke, needs to earn £3,000. Just about anything considered. Any ideas? Leicester. Box 1506.

NOTTM/ANYWHERE, attractive, fun loving guy, 33, dark hair, 5'10", enjoys nights in/out. Seeks same age or younger for friendship, poss leading to 1-1. ALAWP. No time wasters. Box 1507.

LEICESTER, 29, sincere & honest, caring & intelligent, good sense of humour, seeks similar for friendship, poss more. Oriental/Asian esp welcome. Box 1508.

SHEFFIELD guy, 48, warm & affectionate, slim & fit, looking for similar, masculine guy, poss with outdoor interests for friendship & poss 1-1. ALA. Box 1509.

NOTTM, 21, gay guy, wants to meet people in same age group for fun and friendship, hopefully 1-1. Photo apprec. Box 1510.

LOOKING for a discreet relationship/fun? Well I'm your guy. I'm 33, medium build, average looking with a good sense of humour. Photo would be nice but not essen-

tial. Can accomm. Box 1511.

NOTTM, 20, 6'2", slim, likes swimming, walking, running, occas scene, looking for men about 20-30 for friendship/relationship with similar. Photo apprec. No camp please. Box 1512.

NOTTM, slim, passive but genuine and sincere, seeks slim, clean shaven boyfriend for fun & friendship. Photo please returned with mine. Box 1513.

ANYWHERE, ex-schoolteacher, would like to correspond/meet with naughty boy types, uniformed employees, valet types. Frank letter with full fantasy details, likes/dislikes ensures reply. Box 1514.

SHEFFIELD, young, 34, 6', 11st, brown hair, blue eyes, average build etc seeks w/e, active younger brother type for fun, poss 1-1. Can accomm but not travel. ALAWP. Box 1515.

LEICS, Indian graduate, 35, slim, 5'8", hairy, non-smoker, seeks genuine, fair haired, romantic, non-camp, passive guy within reasonable travel for friendship/poss 1-1. Blonds esp welcome. Photo ensures reply. Box 1516.

LEICESTER, 28, straight acting, slim, smooth guy, told attractive, varied interests, seeks locally based friends. Photo please. Box 1517.

SOUTH YORKS, petit, cute, shy, sensitive professional guy, non-scene, into travel, cinema, briefs, sports wear, seeks sincere, non-smoker for romantic loving friendship. Frank letter welcome. Write soon. Box 1518.

WANTED NOW!! 21-29 gay man, Notts/ Derby/anywhere. Me-young, desirable (over 21), brown hair, blue eyes. Extremely hot!! Need guidance. Genuine replies only, photo & frank letter a must. ALA Box 1519.

REPLYING TO AN AD?

Please read instructions, top of page 6. Replies without 2 first class stamps for each box number reply will not be forwarded.

TALL, bald, 47, glasses, smoker, ac/dc, likes music, dogs, home life, boot sales, naturism. You-about caring, tender, 5'8", masculine, driver, age 21-60. ALAWP. I can accomm, poss 1-1. Box 1520.

LEICESTER, early 40s, male, looking for friends of any nationality. Interests, walking, travelling, swimming, videos. ALAWP. Box 1521.

LINCS. Father figure has love & affection to shower on Asian/Jamaican. Good body, hirsute, quite discreet. Me white, medium looks, loving, sincere. Like conversation, videos, massage. ALAWP. Box 1522.

LEICS, guy, 29, 5'11", good looking, straight acting, clean shaven, slim/med build, looking for dom guy into cp, bondage. Frank letter with photo gets mine. ALAWP. Box 1523.

ORIENTAL/INDIAN foreign students wanted to have good clean fun with. Me, 40, very horny, active or passive, come on get writing and lets live life now while you're

young. Box 1524.

DERBYS, 26, tall guy, blue eyes, short hair, into badminton, hiking, music, w/e, needs friends of approx same age who are physical for hot, safe fun. Can travel. Box 1525.

NOTTM, attractive young black guy, straight acting. Interested in all sports. Friendly personality, looking for other young guys for friendship or relationship. ALA. Box 1526.

NO EXTRAVAGANT CLAIMS, I'm just a reliable, caring and intelligent guy, mid 40s, active with many interests and radical views. Replies pref from non-smokers and clean shaven guys. ALA Box 1527.

Congratulations

Andy and John

on your 5th Anniversary

Enhance your personal ad or greeting like this in semi-display - enclose £4 cheque/ postal order with your ad. Max 30 words.

OVER 30? Want to get fit? Why not join me for games of tennis, badminton, squash. I'm 33, into the above sports & seek regular partners. Any standards welcome. Box 1528.

DERBY GUY, 38, slim, fit, active, horny, enjoys swimming, country walks, cinema, seeks chunky and/or hairy guys for fun & friendship. Must be reliable. ALA. Tel no. Box 1529.

NOTTM/ANYWHERE, 47, 5'9", medium build, not bad looks, sincere, many interests, honest! Seeks guys, younger (hopefully) 21-40 for friendship & cuddles, but above all love. Come on guys, give me a try. ALA Box 1530.

MIDLANDS: passive, cropped, pierced, short, slim, smooth, dark hair, fem that's seriously seeking daddy type. Looks unimportant but must be short, stocky, tached. ALAWP. Pref Midlands area. Box 1531.

COVENTRY lad, 21, good looking, tall, seeks similar for fun and friendship. ALA. Box 1532.

NOTTM, 28, 5'5", prof, straight acting/looking, good looking, occas workouts, plays badminton & swims. Into pubs & clubs. Seeks similar for fun & friendship, poss 1-1. Box 1533.

NOTTM/EAST MIDLANDS, tall, slim, 26, interests incl music, cinema, pubs, travel, seeks similar, honest, reliable 25-40 year old guy for friendship & poss relationship. Photo apprec. Box 1534.

NOTTM GUY, 23, athletic build, prof, straight acting. Into motor bikes, sports, cinema, pubs, travel, soh, non-scene, non-smoker, very independent. No attachments. Seeks similar, poss 1-1. Box 1535.

LEICS/MIDLANDS Indian guy, young 35, slim, 5'7", smooth, seeks black/white riders. Will try anything safe. Phone no for quick reply, photo if poss. You won't be disappointed. Reply now. Box 1536.

DERBY/STAFFS, good looking guy, 30, 11 st, w/e, seeks horny guy, gay or bi, 20-40 for safe, hot fun, maybe even friendship. ALA. Tel apprec. Box 1537.

LEICESTER based caring guy seeks similar 35/55 wanting 1-1 relationship. Varied interests, non-smoker. Please write with photo. ALAWP. Box 1538.

SOUTH YORKS, student, 25, 6', slim, v affectionate, seeks stocky/chunky, short/tall, guys for fun+, friendship, poss 1-1. 30+ (balding/hairy/slightly overweight) esp welcome. Photo apprec/ret'd. Box 1539.

LEICS/NOTTS guy, 32, 5'10", straight acting, gsch, into squash, cinema, walks, pubs, seeks genuine, honest guy 25-31 for fun/friendship & poss 1-1. ALAWP. Box 1540.

LEICS, medium build, 5'7", 36, in tight stretch jeans and boots, seeks similar sparring partner, lithe & clean shaven, for trials of strength, domination/submission, (cp?) & rough fun! ALA. Box 1541.

LEICS/MIDLANDS, ordinary working class guy, 34, would like similar masculine meet 25-40 who wants companionship first, hopefully relationship later, someone with experience of stability please, not just sex. Box 1542.

PETERBORO/CAMBS, attractive boyish, v straight acting, 28, medium athletic build, 5'10", smooth, clean shaven, dark looks, own house/car-someone to love, make me happy. Any nationality/deaf. ALAWP. Box 1543.

NOTTM, 25, slim build, tache, hirsute, v w/e, caring, honest, seeks active guy 21-25, hirsute, who enjoys pubs, clubs, friendship & fun, poss 1-1. I am new to area. ALAWP. Box 1544.

LEICS/ANYWHERE, gay guy, 32, 6'1", would like to meet guys 25-40 for hot, safe

HELPLINES

DERBY FRIEND, Wed, 7-9.45pm. 0332-49333.

DERBY LESBIAN LINE, Wed, 7-9pm. 0332-41411.

DERBY AIDS LINE, Mon-Fri, 7-9pm & Thur 2-4pm. 0800-622738.

JEWISH LESBIAN & GAY HELPLINE, Mon & Thur, 7-10pm. 071-706-3123.

LEICESTER LESBIAN/GAY LINE, Mon-Fri, 7.30-10.30pm. 0533-550667.

LEICESTERSHIRE AIDS SUPPORT SERVICES, Mon-Fri, 9.30am-5pm. 0533-559995.

LINCOLNSHIRE AIDS VOLUNTARY GROUP, Mon, Wed, Fri, 9am-9pm, & Tues, Thurs, 9am-5.30pm. 0522-513999.

LINCOLNSHIRE LESBIAN & GAY SWITCHBOARD, Thurs, 7-10pm. 0522-535553.

NATIONAL BISEXUAL PHONELINE, Tue & Wed, 7.30-9.30pm. 081-569-7500.

NOTTINGHAM LESBIAN & GAY SWITCHBOARD, Mon-Fri, 7-10pm. 0602-411454.

NOTTINGHAM LESBIAN LINE, Mon & Wed, 7-9pm. 0602-410652.

NOTTINGHAM FRIEND, Tue, 7-10pm. 0602-474717.

NOTTINGHAM UNIVERSITY LESBIAN & GAYLINE, termtime Mon, 7.30-10.30pm. 0602-514999, internal 4999.

NOTTINGHAM GAY & LESBIAN YOUNG PEOPLE, Thurs, 7.30pm-10pm, 0602-417779 other times answerphone.

SHEFFIELD AIDS LINE, Mon-Thur, 7-10pm. 0800-844334.

SHEFFIELD LESBIAN LINE, Thurs, 7-10pm. 0742-581238.

BIRMINGHAM BLACK LESBIAN & GAY GROUP, 021-622-7351 for details.

IN DISTRESS, Lesbian & Gay Mental Health Group, 021-622-6589.

fun & maybe 1-1. Frank letter with photo/ret'd. Write soon. Box 1545.

NOTTM. Me: 47, non-camp, caring, loyal & sincere. Searching for Mr Right. You: 25+ & similar. ALA. Box 1546.

MANSFIELD, slim, blonde, blue eyed guy, 23, quite attractive but lonely, seeks caring person 21-27 for friendship & fun nights out. Poss relationship. Please write soon. Photos apprec. Definitely ALA. Box 1547.

WEST MIDLANDS, 23, good looking, straight acting, tall, well educated, friendly, seeks similar skinheads or dominant type for fun. B'ham/Coventry/West Mids/Warcks. Box 1548.

EAST MIDLANDS, attractive young 28, medium build, 5'9". Genuinely adores guys 45+. Has an ocean of love that's been lapping empty shores for too long. Long letter please. ALAWP. Box 1549.

GARTREE HIGH SCHOOL reunion '66-'69 on 11.9.93. Anyone else wanting to go but not alone please get in touch. Photo ret'd with mine. You have nothing to lose. ALAWP. M/F. Box 1550.

LEICESTER, 30s, straight acting, balding, quiet, non-scene. W/e. Passive. Seeks active partners for nights in/out. Can accomm. Reply with photo ret'd with mine. Box 1551.

ARE YOU a games player? 33 yr old seeks partner/s for games, tennis, badminton, squash, swimming. Also like nights in playing chess, strategy & fantasy(!) games. Age unimp. ALAWP. Box 1552.

HYSON GREEN WHOLEFOODS

Mon-Sat 9.30-6
(Thurs/Fri till late)

WE SELL ENVIRONMENTALLY SAFE & CRUELTY FREE CLEANERS AND TOILETRIES, A GOOD SELECTION OF HERBS & SPICES, FRESH BREAD AND A WIDE SELECTION OF SNACK FOODS.

ORDERS TAKEN

72 RADFORD ROAD
Tel: 702056

Lesley Clarke Decorative Paint Finishes

Individual and innovative effects to transform your home or office.

Techniques include Marbling,

Rag Rolling, Sponging,

Colourwash, Stencilling,

Woodgraining, Antique

and Fantasy finishes.

For advice and a free quotation,
please telephone
(0533) 431423

OUTPOST!

Now you can have OUTRIGHT delivered to your door. Especially useful for keeping up with the classifieds from afar. Send a £4 cheque or postal order for 12 issues to OUTRIGHT, Box 4, West PDO, Nottingham, NG7 2DJ.

MIXED PERSONAL

NOTTM/ANYWHERE, male, 39, into anything, seeks male/female couple for friendship & fun. Can travel or accomm. So if you want some fun, come on, write soon. Total discretion. Box 1553.

REASONABLY attractive male, 28, slim, sensitive & sincere, often in Nott'm, seeks curious bisexual woman for friendship. Your safety/discretion assured. Answered in confidence. ALA. Age or status unimp. Box 1554.

WOULD YOU LIKE to be a Dad? Gay sperm donor/co-parent req'd by East Midlands lesbian. Co-parenting involvement negotiable. Box 1203.

WOMENS PERSONAL

NOTTM WOMAN, 22, enjoys sport, cinema, pubs, driving, staying in. Looking for friends and fun, willing to travel. you should be 17-30 with gsch. Photo please. Box 1181.

LESBIAN, 30s, happily attached but would like to broaden horizons. Honest, intelligent, and just a little shy. Seeks genuine new friends for conversation, laughter and mutual support. Derbys/anywhere. Box 1182.

GAY FEMALE, young 42, lonely, new to Manchester, seeks same for loving relationship. No bi's. Photo apprec., tel no. Box 1183.

NOTTM LESBIAN, non-smoker, aged 28, seeks someone of similar age for lasting relationship. Enjoys nights in and football, listening to music. Photo apprec. ALA. Box 1184.

ATTRACTIVE lesbian couple 24/38, Sheffield area, varied interests, would like to meet other couples for friendship/nights out/holidays. Photos apprec. ALA. Box 1185.

NOTTM, young 40 enjoys many interests incl drinking, smoking, music. Also likes animals. Seeks friendship/relationship with honest, reliable women 35+. Photo if poss. Box 1186.

LIFE, LOVE, the Universe! Lonely? Confused? So am I. Recently out, straight acting, wishes to correspond with similar mid 20s. Friendship, poss relationship & finding answers. Photo please. Lincs. No butch! Box 1187.

CLASSY, independent feminine lady sought by attractive prof woman, 39, for poss relationship. Non-scene. Enjoys music, cinema, concerts, conversation. Honesty & sense of humour essential. Derby/Notts area. Box 1188.

REPLYING TO AN AD?

Please read instructions, top of page 6. Replies without 2 first class stamps for each box number reply will not be forwarded.

CAN'T FIND HAPPINESS. Need a caring female to share my life. Non-smoker only. Various interests. Must like animals, 35/40, Derby/Notts/Leics/Anywhere. Genuine replies only. Photo please. ALA. Box 1189.

GAY WOMEN, 30s, Sheffield/Chesterfield, sincere, attractive, varied interests, seeks similar for 1-1 with sense of humour. No bi's. Box 1190.

CLASSY INDEPENDENT FEMININE LADY SOUGHT BY ATTRACTIVE WOMAN

Enhance your personal ad or greeting like this in semi-display - enclose £4 cheque/ postal order with your ad. Max 30 words.

LESBIAN PHOTOGRAPHER, shy, feminine, seeks similar for friendship. Photo appreciated. Box 1191.

SELF ASSURED Midlands prof, very attractive, blond, 27, tall, slim, straight looking, occas scene, seeks similar 30+ woman for poss relationship. Photo ensures reply. No bi's or attached please. Box 1192.

ENJOY the company with an extrovert who's open minded, has a wild sense of humour, always accepts people as they are. ALA. Nott'm. I'm slim, white, 5'5"-happy, original, zany! Box 1193.

FEMININE looking lesbian, 26, seeks penpals and friendships from all different areas. Box 1194.

GAY WOMEN, 31, varied interests, wishes to meet similar for friendship, maybe more. Good sense of humour. Non-scene. No butch or bi's. Box 1195.

YOUNG LOOKING, young thinking 44, Nott'm lesbian, sense of humour, loving, sincere, looking for friendship, romance, love. Books, music, walking, cosy evenings. Non-smoker. No bi's. ALA. Box 1196.

LESBIAN, 25, Derbys, charming, gsch, you've seen the rest but this is the best. Seeks similar for good times, maybe more. Don't delay, write today. No bi's please. Box 1197.

DERBYS lesbian, 25, gsch, wicked per-

sonality, looking for similar in Notts/Derby area. Must be able to laugh & know how to live life to the full. Sorry, no bi's. Box 1198.

LEICS/CAMBS woman, 35, enjoys pub & clubs, varied interests, countryside, animals. Honest, reliable, gsch, funloving, passionate, non-smoker, friendship/relationship. 30/40. Photo please. Box 1199.

GAY LADY, 30s, attractive, prof, feminine, inexperienced, non-scene, seeks attr, indep, sensitive, feminine woman for relat. Loves music, cinema, countryside, red wine, sunsets. Photo if poss. Nott'm/Derby/Leics area. Box 1200.

BISEXUAL BLONDE, 22, feminine, attr, 5'5", slim, seeks similar for friendship & fun. Discretion & cleanliness assured. ALA (photo if poss). Looking forward to hearing from you. Box 1201.

GAY FEMALE, 29, easy going, honest, sincere, seeks special woman for fun, laughter, days/nights in or out & lots of hugs & kisses. East Midlands. I can travel. ALA Box 1202.

HELP IS OUT THERE. Anyone out there? Lonely lesbian, 22, seeks someone for fun & frolics & anything else you have in mind. Looks not important. Try, you may like me. Box 1204.

ACCOMMODATION

Advertise your accommodation wanted/offered using the classified ad form. Include your address or phone number in ad for quick replies or let us provide a box number free. Your ad will appear once.

Accommodation files are also kept by Nottingham Lesbian and Gay Switchboard, Derby Friend and Leicester Lesbian and Gayline: see the helpline panel on page 6.

LEICS ACCOMM in house share, £32 pw incl bills. Friendly atmosphere, students/benefit people/working, any nationality wel-

come, non-smoker pref. Meals available. Box 563.

NOTTM LESBIAN wanted to share flat. Own lge room, share facs, £35 pw excl. Working only. Forest fields area. Tel 521917 after 6pm, ask for Jane.

LEICS deaf guy seeks grnd flr flat with gdn in Leics/Derby, on disability benefit. Needed soon. Box 565.

BEESTON, 2 bedr hse, all mod cons. Modern terraced, share with existing gay tenant Bob. £35pw incl elec/gas. Phone extra. Tel 0602-678134 after 5pm.

NUNEATON accomm avail. Quiet domesticated straight acting guy reqd for town centre hse share. Smoker pref. Own room. Mod cons, gas ch. Refs reqd. Box 567.

SHEFFIELD postgrad male student, 29, looking for lge study bedroom in shared gay hse, or other gay men to look for somewhere together. Box 568.

DERBY, mature woman to share hse with owner. Non-smoker. Dog owner. Mod cons, shower, £35 pw plus share bills. Cathy 0332-763763.

NOTTM, 2 rooms to let to working female, share rest of terr hse, gdn, with 1 other & cat, dog. £130 pcm excl. Deposit reqd. 0602-782642.

ACCOMM avail for white/black bi female into weights, keep fit. Non-smoker. Lge room, mod cons, furn. Nott'm area. £30 pw excl. Prof people only, me broadminded. Box 571.

ILKESTON, half hour Derby/Nott'm centre, own rm, share rest of hse with owner. 0602-307644.

MANSFIELD AREA, lge rm, share with owner. All mod cons, lge prvte gdn. Male/female, no prefs. £35 pw all incl. Pets, unempl, no problem. Glenn 0623-825016.