

Winter Walks

Sun 3 Dec: **Leicester Hiking Dykes**, Derwent Moors/Reservoir walks, 5m and 10m choice, meet at 45 King St, Leicester, 9.15am. More info from Marie 0116 270 1621.

Wed 6 Dec: **Sheffield Hiking Dykes**, walks planning meeting, WEA Unit, 516 Workstation, Paternoster Row, 8pm. New lesbian walkers welcome.

Sat 16 Dec: **Leicester Hiking Dykes**, Xmas Party, 45 King St, Leicester, £1 entry. More info from Jill 0116 254 7412.

Sun 17 Dec: **Leicester Hiking Dykes**, Burrow Hill, 7 miles, meet at 45 King St, Leicester at 10.30am. More info from Helen 0116 291 2128.

Sun 17 Dec: **Sheffield Hiking Dykes**, Somersall Park, Chesterfield, 7 miles, easy ascents. Meet in car park 10.30am.

Sun 17 Dec: **Pink Pathfinders**, Hope and Win Hill, 4 miles, meet at Hope car park, 10.45am.

Sun 17 Dec: **Transpennine GOC**, Christmas Walk and planning meeting, Hebden Bridge, details John 0113 273 7040.

Wed 27 Dec: **East Midlands GOC** walk, details from Nick 0116 281 1138.

Sun 7 Jan: **Leicester Hiking Dykes**, meet at 45 King St, Leicester, 10.30am. More info from Angie 0116 240 4423.

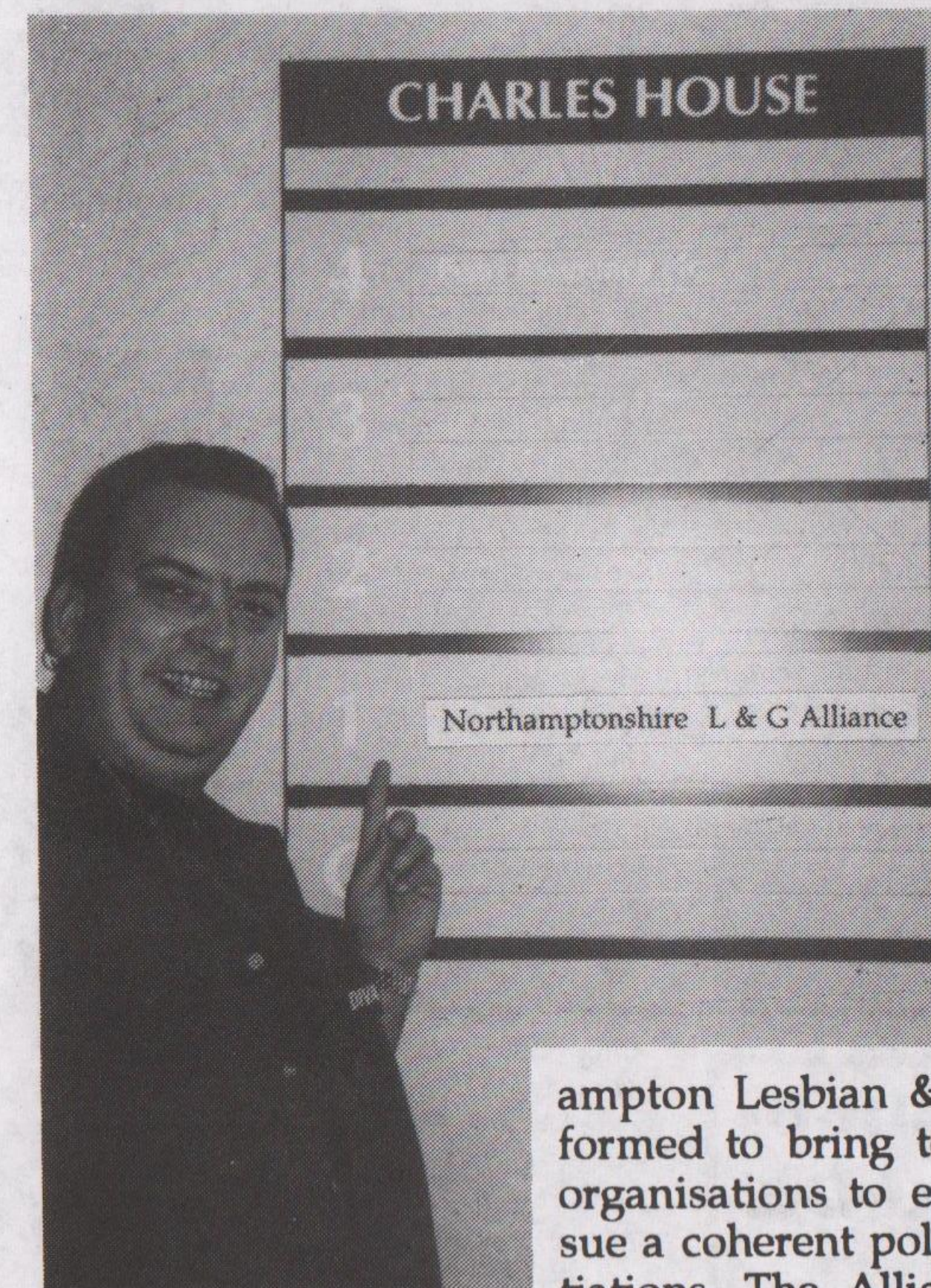
Kick Around

Every Sunday morning in Nottingham from 10am to 11am, there is football for gay and bisexual men. For details of pitch ring Gregg on 978 0124. Said Gregg 'It's really taking off ... last week nine people turned up!

RIGHT ON TIME!

In less than three years Northampton's lesbian gay and bisexual communities have opened a weekly drop-in cafe, acquired a modern suite of council/health authority funded offices, and appointed three paid workers to run it. How did they do it?

What could have been just another committee meeting, in the Autumn of 1993, was the turning point in galvanising lesbian, gay and bisexual community groups in Northamptonshire into action. Social Services officers had approached leading community activists, suggesting lesbian and gay user input into the service provision of the then proposed community care plan for 1994/95 which, at that time, was devoid of any recognition of lesbian, gay bisexual people's needs in the County.



Soon afterwards in April 1994 an umbrella organisation, Northampton Lesbian & Gay Alliance was formed to bring together the various organisations to enable them to pursue a coherent policy in council negotiations. The Alliance looked at successful initiatives in Manchester and Leicester before embarking on their own project in Northampton.

Steve Young, Alliance spokesperson said: "Both the town and country councils had good equal opportunities policies on paper and when we approached them and began negotiations for funding we simply used those structures and both councils were happy to respond to us. It also helped that we have a number of lesbian and gay workers in senior positions within Health and Social Services who were able to access the resources we needed. "So when we pushed at the doors they opened easily", said Steve.

He acknowledges that a crucial element in their success was the formation of the Alliance which brought and held people together, enabling the communities to speak with one voice to statutory organisations. "It was bloody hard work to get to where we are but well worth it", he adds. "The appointment of the workers is just the start; they have already identified a whole lot more that needs doing", he said. The Alliance have the Resource Centre on a three year lease and in this time they hope to secure long-term funding.

"Obviously there were disagreements and conflicts amongst people in the Alliance at different times but we seemed worked these through, licked our wounds and kept sight of our eventual goal," he said. I was at a National Switchboard Conference recently where some Switchboard delegates even had to hold raffles to pay their phone bills; This made me think how lucky we are in Northampton".

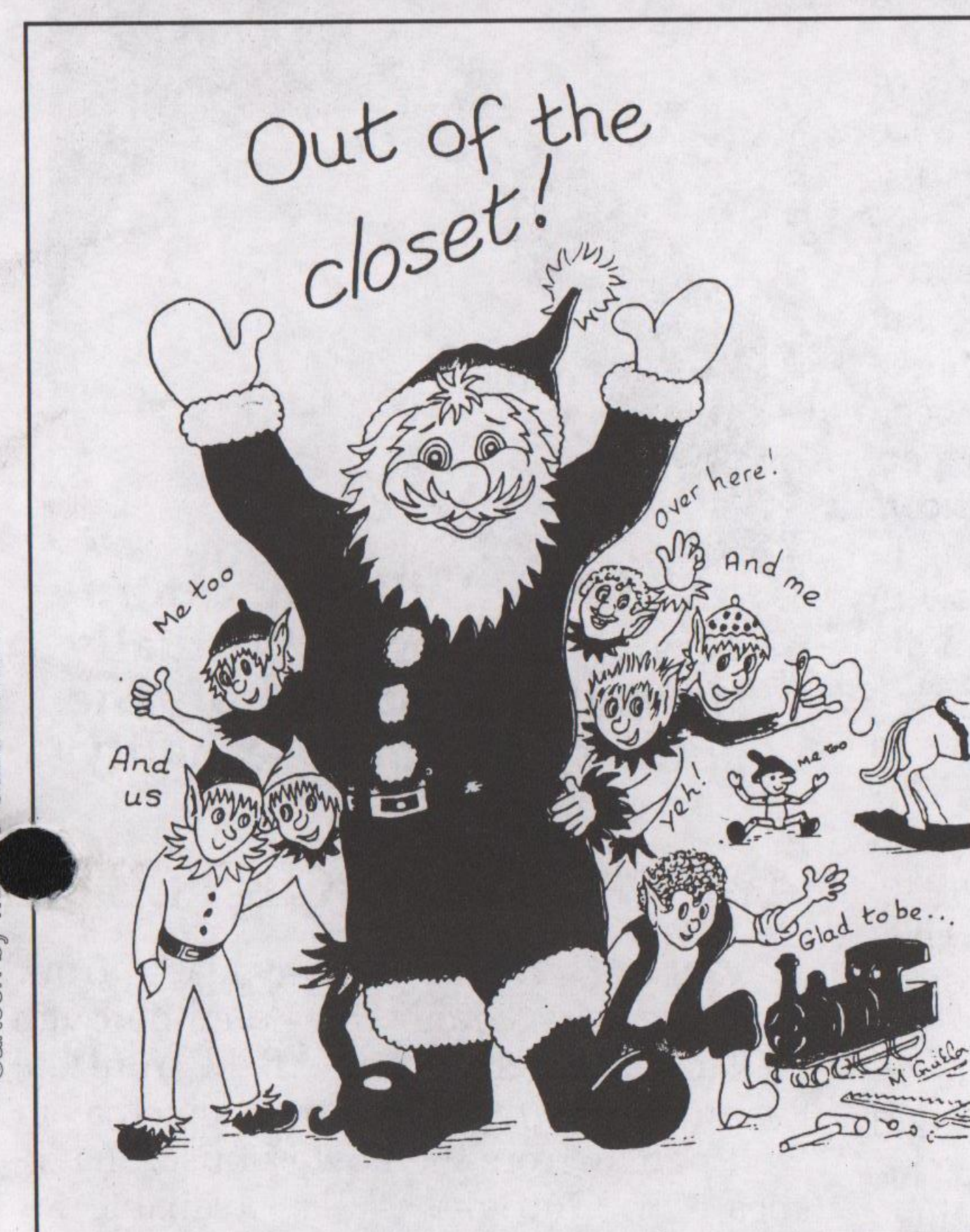
Orton's cafe operates at the Roadmender, 1 Lady's Lane, in the town centre, Saturdays only, 12 noon to 4pm. Northampton Lesbian & Gay Resource Centre is located at Charles House, 61-69 Deragate, Northampton. (01604) 28986.

Northampton Lesbian & Gay Resource Centre is located at Charles House, 61-69 Deragate, Northampton. (01604) 28986.

Northampton Lesbian & Gay Resource Centre is located at Charles House, 61-69 Deragate, Northampton. (01604) 28986.

outright!

december 1995 issue 68 for gays, lesbians and bisexuals free



Seasonal Greetings to all our readers, reviewers, advertisers and printers, and everyone who has helped **outright!** in 1995.

Pub Wins Award

The Pineapple Inn in Leicester was awarded a runners-up position for Strongbow's "Appealing Pub Award 1995" competition. The pub's PineappleAid raised almost £5,000 during the year, to which Strongbow will be adding a further £100 in recognition of the events. The PineappleAid committee have announced that a second special air-bed has been delivered to Ward 38 of the Leicester Royal Infirmary.

BOYS IN BOILERSUITS

The former proprietor of a gay sauna was congratulated by Magistrate Peter Nuttall in Nottingham on 25th October for "Providing a place for people to meet" but said he was duty bound to impose a fine on him for "running a brothel". John Turner of Carlton Road, Nottingham and former proprietor of Stryker's Sauna pleaded not guilty to running a brothel but was fined £100 under the 1956 Sexual Offences Act. (The maximum fine that can be imposed under this Act is £1,000).



Sensible wear for a sauna raid?

Before reaching his decision, the Magistrate twice cross-examined the eight members of Nottingham's Vice Squad, led by Inspector David Dawson, and at one point asked each of them whether they were 'bent' and had 'planted' evidence in the sauna in order to secure a conviction. Both accusations were denied by the officers, which the Magistrate accepted.

The cornerstone of the photographic evidence concerned a display of symmetrically arranged unused condoms which

continued on page two

THE ADMIRAL DUNCAN

Lower Parliament Street,
Nottingham (0115) 950 2727

Can we remind our customers that they must now be in the building before 11pm on all of our late nights - Wednesdays 'til 12.30am, Thursdays, Fridays and Saturdays 'til 1.30am

And don't forget! Strippers every Sunday night, 10.30pm

Open as usual during construction work.

Published by Naff Co-operative Ltd. PO Box 4, West PDO, Nottingham, NG7 2DJ. (0115 978 0124).
Printed by Anvil Press Ltd (TU) (a workers' co-operative), 119 Abbey Street, Derby, DE22 3SP. (01332 298 213).

DECEMBER'S
GUIDE TO
SATURDAYS AT

KITSCH

Sat 2nd Paul Baker +
JASON UK Dance Champion
With New Single Be Happy

Sat 9th Danielle Passion
Sat 16th Sam Rushton

Sat 23rd Hot Pants Christmas Special
with Sharon O Love

Sun 24th SORRY FOLKS WE ARE CLOSED

Sat 30th Paul Baker
Saturday Prices £4 Members £5 Guests

Sun 31st New Year's Eve
Sharon O Love

£6 Members £7 Guests

PLEASE BE EARLY TO AVOID DISAPPOINTMENT
FOR FREE MEMBERSHIP TEL: 0115 952 0021

● Briefly...

● **GALS** is a new Chesterfield-based social group which offers support & friendship for lesbians. Meetings are every Tuesday 7.30-9.30pm in a safe location near the town centre. There is also confidential & anonymous helpline which operates during those hours on 01246 559431. All lesbians are welcome, especially those who are just discovering or coming to terms with their sexuality. Further info from the above number or write to PO Box 8, Chesterfield, S40 1NY.

● **NASUWT** (a teaching union) Yorkshire Federation Annual Conference on the 12th November at Wetherby heard David Blunkett promise a delegate that the next Labour government will repeal Section 28 of the Local Government Act.

● **At the Liberal Party** National Executive of 18 members meeting in London, Liberals unanimously passed a resolution calling for the ban on gay & lesbian foster parents to be dropped. The Party has now sent a letter to the Childrens Society adding its voice to the campaign.

● **December events** at the Leicester University Students' Union LGB Association: Weds. 6: Christmas party at 45 King Street. 8pm start - bring a bottle! Weds. 13: Social meeting at the Dover Castle starting at 8pm. Fri. 15: Rapture in the Asylum at Leics Uni. Tickets £2 from LUSU shop or 45 King Street. £2.50 on door.

● **A new social group** for lgb's meets at the Admiral Duncan, Lower Parliament Street, Nottingham on Tues. 12 Dec, then every 2nd Tues. at 8pm. Info from Andi on 0115 986 7372.

Boys in Boilersuits...

continued from page one

had been removed from their packets. There was no lube in evidence. There was also one Mates flavoured condom suitable for oral sex. Karen Hughes, Manager of Nottingham Health Shop confirmed that, apart from the one Mates condom, the condoms in the photograph were for heterosexual use only and not the type normally used by men who have sex with men.

Mr Nuttall criticised the evidence of Inspector Dawson of Nottingham Vice Squad. There appeared to be clear discrepancies between the oral, photographic and written evidence which did not match up with that in their pocket books. When challenged by the Magistrate why the condoms had not been taken away for forensic analysis, Inspector Dawson replied that his officers would have needed protective clothing in the form of an allover boiler suit with breathing apparatus, before removing them.

The court also heard that over a 13-month period a total of eight officers had been involved in undercover operations at the Sauna and checking statements in other parts of the country. They admitted that on two visits they found nothing incriminating.

Said John Turner after the hearing "It was clear from what the Magistrate said that he was very reluctant to find me guilty, as evidenced by the low fine". Defence solicitor Barrie Ward described the two and a half day trial as "a total waste of time and money".

Ian Wilmott, convenor of the recent National Conference on Policing Diversity held in Manchester said "It's hard to take seriously Police requests for more resources when they waste time and money in ensnaring gay men in victimless crimes".



Photo: Positive Times.

Andrew Sullivan, controversial author of 'Virtually Normal', a study of the politics of homosexuality.

Outright! OUTLETS

Outright! is now available from Rickenbackers, Granby St, Loughborough on Tuesday nights; in Sheffield from the Leadmill and the Showroom cinema; in Nottingham from the Powerhouse, Shakespeare St. Outright! is also available for reference in all ninety public libraries in Nottinghamshire.

**Have a problem?
Need to talk?
One-to-one counselling
Private & Confidential
Please call Peter AEB/Cert
01332 755098**

USE YOUR BUYING POWER

HIZIKI
Buying from countries and companies with a commitment to social justice - Hiziki has the widest range of wholefoods, fresh bread, take-away snacks, organic fruit & veg, vegetarian convenience foods, and organic wine & beer in Nottingham. We also stock many natural remedies, cruelty-free toiletries & environment friendly cleaning products.

5% discount for UB40s, OAPs & students on Wed/Thurs.

Hiziki is a workers' co-operative

15 GOOSEGATE, HOCKLEY NOTTINGHAM

FOR POSITIVE CHANGE

INFORMATION
around safer sex, HIV/AIDS and other sexually transmitted diseases

ADVICE & SUPPORT
on all sexual health issues, physical and emotional

Community Action
ASH
on Sexual Health

TRAINING
around sexual health and sexuality, anti-homophobia etc.

LEAFLETS & POSTERS
and other resources

FREE CONDOMS
also water-based lubricants and dental dams

Available free and confidentially to everyone, regardless of age, sexuality, colour, race, religion, disability or HIV status.

CASH is part of Peak Health, North Derbyshire Health Authority's Health Promotion Programme.

CONTACT:
Richard Marriott
4 Rose Hill, Chesterfield
S40 1LW Tel: (01246) 559431

● Briefly...

● **Sheffield Uni's Christmas Climax** on Fri. 15 include Sister Bliss, OT Quartet & GayTime Tv presenter Rhona Cameron. Tickets £4 adv/NUS from the ticket office (0114 2753300) or £5 on the door.

● **Preparations for Promenaid '96** are well under way. Promenaid raises money for The David Manley Fund, LASS & other Leics. HIV/AIDS groups & agencies. Tickets for the extravaganza are £16.50 & £13.00 available from the Haymarket Theatre box office on 0116 253 0021.

● **LASS**, Leicestershire AIDS Support Services held a Fundraising Tea Dance on Sunday 12 Nov. which raised £130.00 for locals affected by HIV/AIDS. They are already planning another teadance for early 1996 - details will appear in Outright!

● **LASS** (Leicestershire AIDS Support Services) have produced a colourful 1996 calendar to help raise awareness about HIV/AIDS. They calendars cost £2.00 (+30p postage) and can be obtained from LASS, 53 Regent Road, Leicester, LE1 6YF.

YESTERYEAR

Twenty Years Ago



Mr Shades, winner of the Shades nightclub competition receiving his £50 cheque from the club owner at Stanford Street, Nottingham.

Lilly Trollette

Well its Xmas again and time to celebrate the Solstice by searching for Panta Claws in the Woods. When you find him always ask for his badge number first. Every year Masses of us play with each other in the fresh air to get away from the stress of the family Xmas season and every year some of us get arrested.

If it happens to you admit nothing, accept no cautions, contact your local Switchboard with details immediately, ask them for a gay-friendly lawyer, tell your lawyer you want to achieve a one-year delay in your trial by whatever means, opt for Crown Court in all circumstances (you are five times more likely to win, and three times more likely to have your case dropped), tell your lawyer to cause as much interference with the police as possible in the intervening year - they can't handle it.

PINEAPPLE INN

**Friday 8th December
WINTER BEACH PARTY
MR. PINEAPPLE COMPETITION
£50 1st prize, £20 2nd prize, £10 3rd prize
Disco 'till 2am**

**Friday 22nd December
PINEAPPLE PRE-CHRISTMAS
FANCY DRESS PARTY NIGHT
Disco 'till 2am
Drag - MISS KLIO**

**Sunday 24th December
CHRISTMAS EVE PARTY NIGHT
PINEAPPLEAID RAFFLE DRAW
Disco 'till 12.30am**

**Monday 25th December
CHRISTMAS DAY
Open 12.00pm-3pm Bar open
Open 3pm - 7pm Lunch & Cabaret
Open 7pm - 10.30pm Bar & Cabaret
Book Now!**

**27 BURLEY'S WAY, LEICESTER
0116 262 3384
Opposite St. Margaret's Bus Station**

**Tuesday 26th December
BOXING DAY - PARTY! PARTY!
Disco 'till 2am**

**Sunday 31st December
NEW YEAR'S EVE PARTY NIGHT
THE BEST PARTY IN LEICESTER
Disco 'till 12.30am - No entry after 11pm
£1 in advance, £2 on door,
Free glass of bubbly at midnight**

PINEAPPLE CHRISTMAS RAFFLE - all proceeds to Pineappleaid 96

(Pineapple's own fund for AIDS support)
Throughout December tickets are on sale for the Xmas Raffle, which will be drawn at our Christmas Eve Party Night.

**1st prize - Stereo System 2nd prize - Xmas Hamper 3rd prize - Champagne
5 tickets for £1**

Mark, Philip and Carl wish you all a very happy Xmas and a fruit-full, safe New Year

Welcome abroad

the complete gay travel centre

**Gay Holidays
City Breaks
Worldwide Flights
Accommodation
Car Hire/Fly Drive
Channel Crossing
Theatres/concerts**

0116 291 5853

Mon - Fri 8.00 - 8.00 • Sat - Sun 9.00 - 6.00

121 Kirby Road, Leicester LE3 6BE

IATA . TGTG . T0256

On The Box

Sunday 3

THE MRS. MERTON SHOW/BBC 2

Featuring 'entertainer' Paul Daniels whose wife Debbie McGee was asked "What first attracted you to the millionaire Paul Daniels?" by the redoubtable Mrs. M. in the first series.

Monday 4

HORIZON: AIDS - BEHIND CLOSED DOORS/BBC 2

'A unique opportunity to get close to the A-team of the world's AIDS thinkers as they try to discard old notions & forge a new consensus on how to fight the 20th century plague.'

THE QUEEN PHENOMENON/C4

Nope, not an in-depth Scrutiny of Screemers but a behind the scenes look at Freddie & the boys. Since Miss Mercury's death in 1991 the band have sold in excess of 25 million albums and this programme examines the phenomena, including the first ever filmed Queen concert and the last ever filmed interview with Freddie.

Tuesday 5

FINE CUT: THE END OF INNOCENCE/BBC 2

Gay Rights activists & AIDS campaigners describe how homophobia, moral outrage & a desire not to offend have prevented the formulation of a realistic & rational approach to the threat of AIDS.

Thursday 7

OPRAH WINFREY SHOW: DAY OF COMPASSION/BBC 2

With guests who talk about living with AIDS

Friday 8

RED, HOT & COUNTRY/BBC 2

Starring Nancy Griffiths, Waylon Jennings, Suzy Boggus & Duane Eddy with all proceeds going to AIDS research,

Briefly...

● **Pink Chalk** Sat. 9 Dec. Tea & cakes, come and have your say and tell us what you think about us so far. All LGB workers in education welcome. ICC, 61b Mansfield Road, Nottingham, 2pm. Info: Anthony 0115 958 5814

● **Older Lesbian Group** for over 40's. More details Toni 0116 254 7412

● **Freedom Disco**, Lincoln. 2nd & last Weds. each month at Falstaff, High Street, Lincoln, 7-11pm. 24 Dec. until 12.30 am, 31 Dec. until 1.30 am. Info Kurt 01522 545066

● **Pink Alternative Folk Dance**. 2nd Sunday of each month. Details: Andrew 0115 942 4305

KNOW WHERE YOU STAND? TALK THINGS THROUGH ANY LEGAL PROBLEM!

We are a young firm of solicitors who are committed to providing a Legal service to The Gay and Lesbian Community. Pop in at our offices for "Free" initial advice, or

visit our information advice clinic on Thursday evening till 7.00pm. Legal Aid is available.

The Falvert Oliver Partnership, Solicitors, 26 Lower Parliament Street, Nottingham, NG1 3AD. Telephone number is (0115) 950 66 77 or call on our free call number (0115) 941 95 77. We are opposite the Ritzy night-club. ANY LEGAL PROBLEM



Briefly...

● **If you live** in the Lincs or East Notts area and are interested in leather, denim or uniform, a new group is being organised and would like to hear from you. Contact Lincs. L&G Switch-board 01522 533353, Thurs or Sun. 7-10pm & they'll put you in touch with the organisers.

● **Club Bizarre** at The House, Huntingdon St., Nottingham on 22nd Dec., 9pm-2am. Opening night of a new 'gay friendly fetish club' featuring a specially choreographed erotic fashion spectacular and a well-equipped playroom. A dress code of glam, TV, rubber, leather, PVC, lingerie & Lycra will be strictly adhered to on the night. More info from Tony or Michael on 0115 920 9861.

● **John Gill** has been commissioned by the lesbian & gay studies imprint at Cassell Publishers to research a book about the life experiences of working class gays, lesbians & bisexuals. Anyone who defines themselves as working class gay, lesbian, bisexual or transgendered and fancies helping John with his project should write to him at 38 Shell Road, London, SE13 7TW.

THE MENS SEXUAL HEALTH PROJECT 45 King Street Leicester LE1 6RN (0116) 254 1747

We offer information, counselling and support around HIV/Sexual Health, safer sex, relationships and sexuality.

We provide free condoms, lubricant and dams on request.

We are a team of 3 Gay men:-

Andy Griffiths - Project Co-ordinator

Dylan Parris - Project Worker
(Black men who have sex with men)

David Peet - Project Worker (Cottaging & cruising issues)

OPENING TIMES

Monday 12 noon - 4pm
Tuesday 12 noon - 4pm

Wednesday The Centre is Women Only

Thursday 12 noon - 4pm
Friday 12 noon - 4pm

2nd Saturday of every month 12 noon - 3pm

ALL OUR SERVICES ARE FREE AND CONFIDENTIAL

Available free to all men who have sex with men regardless of age, sexuality, race, religion, disability or antibody status.

TRADE

is a group of gay and bisexual volunteers who want to do something about the HIV epidemic.

If you are interested in getting involved, why not give us a ring.



TRADE

We are particularly keen to recruit volunteers from Black communities who are currently under-represented in our organisation.

INTERVIEW

WE ARE THE MACHETE PEOPLE!

Adult Comic books sales account for millions of pounds annually, are as old as the Assyrians, and readers from 25 to 85 get hooked on them. But the growth of adult comics really took off in the mid-80's. Two of the leading exponents of the art of comic book writing visited Nottingham recently, and OUTRIGHT cornered them in Nottingham.

Both Donna Barr and Roberta Gregory (pictured l. to r.) describes themselves as the "machete people"; and those, mainly male, who write for the 'Superhero' market as 'living in a glass bubble' whose characters only exist behind a neat fence and a nice mowed lawn'. 'We take chances, break the mould and make waves. They don't.

The Women's bookshops and networks, now mostly defunct, were crucial to their early publishing successes. These days Roberta and Donna own the copyright to their characters, write the stories and publish themselves. "We feel strongly about what we do and the way the comix industry generally exploits its illustrators. Many comics are team written, where writers can be hired and fired at will. The creators rarely own the characters. We also object to the way comics are used to push products like bubble gum and not treated as an art form in themselves".

Donna Barr, who cites Mark Twain as an early influence on her work, majored in English & German Literature before writing comics and is noted for her hero, the Desert Peach, the



camp gay brother of the Nazi Rommel. But Donna, of Jewish descent herself, has no trouble in justifying why she creates characters like Peach. "I like to turn things on their heads. If you knew about Germany's past you weren't supposed to discuss it. Equally Americans only get 'the Party Line' about World War II. Through Comics I can let Germans know what really happened in the War".

Roberta Gregory, who describes herself as queer was

weaned on comics - "I first learned to read from them", she says. She majored in Graphic Design and is noted for her Bitchy Bitch character in Naughty Bits. (Her first issue has the distinction of being banned by the British Customs some years back). Bitchy Bitch is, on the surface very anti-feminist, homophobic, powerless, full of hate and an anti heroine but there's more to her than meets the eye. Through Bitchy Bitch, mundane office dramas get interwoven with strong topical issues like pregnancy, abortion, and religion. At first, men were terrified by this woman who gets angry and screams about pre-menstrual tension", she laughs.

"Comics are also a great way to deal with gender ambiguity - no 'he' 'she' 'it', its like tweaking. The thing you do with comic book characters is present them - you don't explain."

We continue this interview in next month's Outright!

mushroom

B.O.O.K.S.H.O.P

10 Heathcote St, Nottingham,
NG1 3AA. 0115 958 2506

WRITE ON
RIGHT-ON
XMAS CARDS
DIARIES
CALENDARS

available now in Mushroom's

XMAS GROTTTO

XMAS OPENING HOURS

6th, 13th and 20th December.
(Wednesdays) 10am-7pm

Xmas Eve, (Sunday) 10am-2pm

Normal opening hours

Monday-Saturday, 10am-6pm

Only closing Xmas Day, Boxing Day, New Year's Day

MARSDEN'S BAR

13, Marsden Street, Chesterfield 01246-232618

Happy hour every night, 7-8pm
We wish all our customers a
Merry Xmas and a Happy
New Year

Tuesdays - Quiz Night
Wednesdays - Strippers
Thursdays - Karaoke
Fridays - Disco
Saturday - Disco
Sunday - Cabaret



Opening hours
Wednesday 20th December
till 1st January, 1996
lunchtimes, 12-3pm,
evenings 7-11pm

MUSIC

Stocking Fillers

Recently, there seems to be a glut of cheesy telly series spin-offs where people in them (I refuse to bestow the accolade of 'actors' upon them) transfer their lack of ability from the small screen onto the music scene. A concept even more frightening than the idea of a Michael Bolton greatest hits collection comes in the form of Robson & Jerome, a pair of off-key undesirables who have already showed themselves up with putrid renditions of 'Unchained Melody' and 'I Believe'.



Robson & Jerome. (Are you sure? -Ed)

They continue their slaughter of music on their album which contains shocking noises which leave you reaching for the gin bottle with despair at the appalling racket from the tuneless face-aches. I made a more musical sound when I caught me foreskin in me zip (I have a cassette of the occasion, available for £9.99 + p&p).

Meanwhile, on his new album, the frighteningly countenanced and vocally-challenged Jimmy Nail stumbles moaningly around in such a tuneless manner that it makes Karen Carpenter look like Maria Callas. What next, The Bill sing Nat 'King' Cole? This kind of spivvy foot in the door marketing prays on the gullibility of soap opera addicts who really believe that the characters are real and not just pretending. There are plenty of

singers with unique vocal talents out there. Unfortunately, none of this trio are included.

Tap it, unwrap it...

In the dull winter months sommat to cheer you up & recall the hot summer daze is 'Clockwork Orange', a set of succulent slices mixed to blister your tabs, featuring the top tunes that have whipped the gyrating hoardes into a frenzy at the Clockwork Orange clubnights in Ibiza during 1995. Play it pre-clubbing to help the rush and get you ready for that vibelicious feeling and spin round like a frenzied dervish to the tasty tangs of fruitbait including Yosh's 'It's What's Upfront That Counts',

'Hapiness' by Brooklyn's Poor & Needed and the top tenner 'I Believe' by Happy Clappers. The mix between Perv's 'Losin' My O' and Skanking's 'Another Drug Mix' is a relentless pounding whiplash of sounds which leaves you feeling that your brain's been removed, pickled in acid and then replaced upside down & back to front. Mixed to the max by Brandon Block and Alex P, these sounds will transport you to Ibiza. Turn off the lights, roll up...the carpet, crank the system up and dance till dawn and beyond.

Simon Smalley

KANCELLED

The December Tour by Atomic Kandy has been cancelled due to unforeseen personal reasons. Mary sends her sincere apologies to all of you who were eagerly looking forward to the dates. Exciting things are happening musically...your Outright! will keep you informed.

COUNSELLING & PSYCHOTHERAPY

EVE PARSONS
Psychotherapist in advanced Gestalt training
The Healing Arts Centre
Hockley
Nottingham
Tel: (0115) 958 0734



Womens Coffee Bar
EVERY WEDNESDAY LUNCH-TIME FROM 12PM - 2PM 45 KING STREET
YUMMY FOOD AND GREAT COMPANY!

Lesbian and Gay Line 0116 255 0667

FREE AND CONFIDENTIAL

HIV TESTING



The Health Shop
Broad Street,
Nottingham
0115 947 5414

ALSO FREE CONDOMS,
LUBE AND
HEP B VACCINATION

MSF Conference

The third annual conference, of LAGIM, Lesbians and Gays in MSF takes place at Bishops Stortford in Essex over the weekend 8th-10th December. LAGIM is one of the few trade unions to have its own self-organised groups. A conference theme is 'equal rights in the workplace' and 'the role of LAGIM within MSF'.

But its not all work! There will be quizzes, a musical evening, a bar, swimming pool and sauna in the conference venue. Special dietary needs and a creche can be arranged. All costs, including return travel will be met by the Union. Conference Co-organiser, David C. King said, "This is my third conference and every time I leave feeling enthusiastic and empowered". If you would like a place contact David C. King or Mary Cullinan on 0171 837 4134.

anvil press

print & design

- ★ Leaflets/Flyers
- ★ Brochures
- ★ Newsletters
- ★ Business Stationery
- ★ Posters
- ★ Booklets
- ★ Stickers
- ★ Carbonless
- ★ Envelopes
- ★ Full Colour

119 Abbey Street, Derby
Tel: 01332 298213

Anvil Press is a Workers Co-operative

I WISH IT COULD BE CHRISTMAS EVERY DAY...???

For a lot of gay people of a family Christmas is something they desperately miss because of the rejection they face from



their family because of their homosexuality and many people desire a return to the bosom of this traditional family event of the old, pre-coming out days.

However on the flipside of the choccy coin

are those for whom the thought of a family Christmas is repellent and something to be avoided at all costs. Enforced joviality and avoidance of certain subjects means we're all set for a trial of boredom and alienation where very often the conflict that has been put on the back burner finally overboils. As so many gay people's families do not accept and barely tolerate their child's gayness, they still expect them to toe the festive family line and in most of us there is a certain thread of guilt that makes us comply with these expectations.

There is no escape from the dreadfully cloying family aspect with which we are constantly bombarded with from all angles, from the smug happy shoppers who begin to throng to the shops Christmas shopping in July spending in a fashion that makes Viv Nicholson look like Scrooge and the torture continues as early as November with horrendous brats yelling two lines of a carol at your door and then expecting payment. Demanding money with menaces, I believe it's called. (I set the

Our thanks to Maggie & Trudy of Maggie Guillon Cards for use of cartoons from their Winter Solstice Collection.

dogs on 'em meself) Over the Christmas period, the repeats of sickly sitcom specials on TV go hand in hand with the inevitable

questioning from distant relations who roll up for their annual visit "Have you met any nice girls whilst you were at college dear?", "Isn't it about time he was married, mother?", "I can't understand it a nice lad like you isn't married..." But worst of all is when you'd rather be watching your 'Leather Lords of the Fisting Dungeon' video but have to suffer the sincerely spontaneous Queen's speech.

With public transport stopping it often means that non-driving couples are separated and those that are unable to talk freely will have to sneak out to a public phone box to try and speak with their partner from who they are distanced from by the parental wall of silence. Why can't families accept that we are adults with our own personalities, lives and expectations. We have our own homes and 'pretend families' and many would rather be relaxed either 'Just the 2 of us' or with a bunch of mates getting pissed and playing strip 'Twister'.

But!...for every person who's sitting with their family at Christmas feeling ratty and itching to yell 'Oh, shut up!'; there'll be an equal amount wishing that they had the opportunity to be in that situation.

Whichever way you view it, Christmas comes but once a year. I'll drink a toast to that.

Carsmile Smith.



CAEIA MARCH

Caeia March reads from her new book, "Reflections", 9th December, 45 King St. Leicester, 7.30pm.

Briefly...

- The Black Lesbian, Gay & Bisexual Group next meet on 12th December, 7pm, 45 King Street, Leicester.
- Loughborough Women's bar, Monday 11th Dec, 8.30pm, Labour Club, Fennel St. (opposite bus station) 01509 235610.

DERBY AIDSLINE

Worried/confused about HIV/AIDS?

For confidential advice and information, phone FREE on Derby Aidsline

0800 - 622738

Mon & Thur 7 - 9pm
Thurs 2 - 4pm

LOOKING FOR NEW FRIENDS?

Then Leicester Gay Group, a social and befriending group for gay men of all ages, wants to hear from you. Wide variety of social activities and meetings for newcomers held fortnightly in the centre of Leicester.

Interested?

Phone Chris on
01509 415272

Andrew and Polly wish customers old & new a very Merry Christmas and a Happy New Year

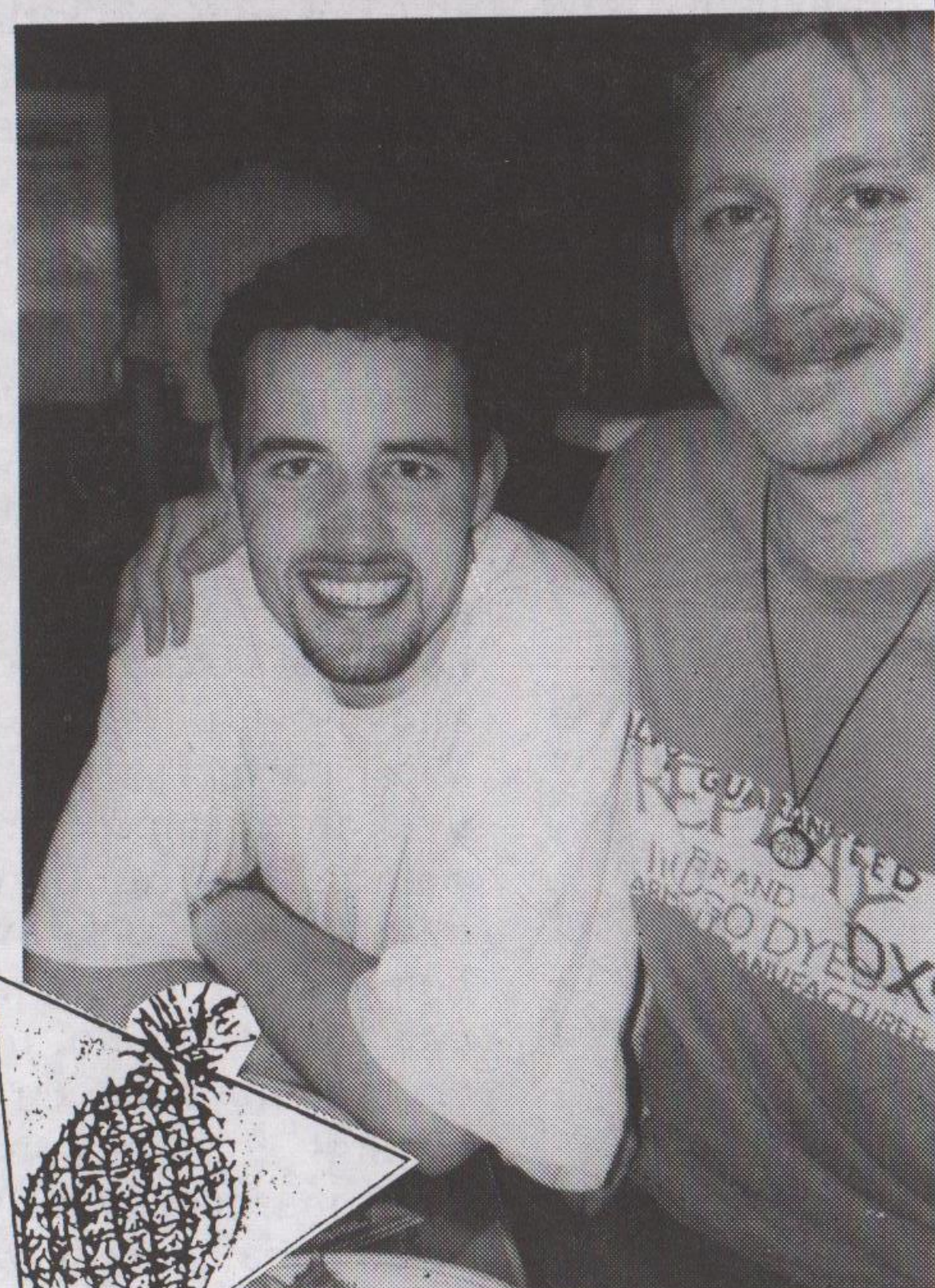
THE KING'S HEAD

BOSTON'S ONLY
GAY RUN PUB

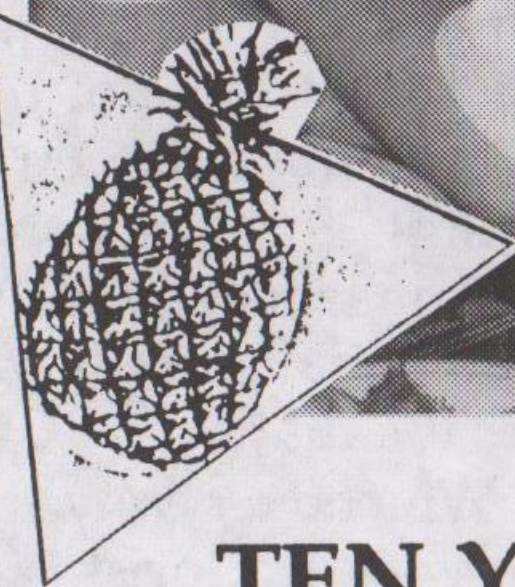
Emery Lane, Boston
01205 362926



LEICESTER LINEUP AT THE PINEAPPLE INN AND DOVER CASTLE



Responding to an advert?
Mention that you saw it in
outright!



TEN YEARS YOUNG!

The Nottingham OutHouse Project is ten years old on December 8th, and to celebrate there is a party and cake cutting ceremony at the Admiral Duncan. The party is open to all members of

IDENTITY CARDS

OutHouse Project and anyone interested in the aims of the Project. The Project is still hunting for suitable premises following the Committee's rejection last year of premises on offer on Mansfield Road, Nottingham.

The Liberal Parties in Staffordshire, Manchester and Merseyside are urging gays, lesbians and bisexuals to write to their MPs to urge them to accept the results of the recent Home office consultation which showed overwhelming opposition to the introduction of Identity Cards. Over 400 organisations and individuals wrote to the Home Office to oppose the idea while only 11 wrote in support.

Lesbian, Gay, Bisexual? In Business?

Would you benefit from professional and social networking? Interested in forming a local branch of the Gay Business Association? For details contact Box GBA c/o Outright! PO Box 4, West PDO, Nottingham, NG7 2DJ.

Broadway

Fri 8 - Thur 14 Dec

When Night is Falling 18

Camille, a beautiful and engaged-to-be-married theologian, has her life turned upside down when she meets charismatic, lesbian circus performer Petra. Should she give in to her newly discovered feelings, or follow the respectable path that is already mapped out for her.



Intro 8.15, Fri 8 Dec

Broadway Director, Gill Henderson, will introduce the film, and consider the expectations that we, as audiences, bring to lesbian subjects

Broadway Cinema, 14 Broad St, Nottingham.
Tel (0115) 952 6600/6611



PHOENIX

A R T S

New Breed Theatre Company in Tryst
Sat 2 Dec 8.00pm

Four solo spots by one of Britain's best disabled theatre companies including Mike Peter's queer dilemma...

Opera Circus in *Shameless! An Immoral Tale*
Wed 6 Dec 8.00pm

Verdi, Puccini, Mozart et al as you've never seen them before!

The Adventures of Priscilla + Muriel's Wedding Double Bill
Fri 8 Dec from 8.00pm

Join in the festive fun with this 70s disco double bill. An Aussie extravaganza to put your finest frocks on for.

Plus

Farinelli the Castrato
When Night is Falling
and much more...



Box Office 0116 255 4854
11 Newarke Street, Leicester LE1 5SS
Phoenix Arts is a registered charity



REVIEW

'Memoirs of a Gnostic Dwarf' by Davis Madsen

This is a bawdy historical romp that reveals behind the scenes political & sexual intrigue in Renaissance Italy at the time of the Borgias seen through the narrative of a dwarf at the papal court. It is a cross between The Canterbury Tales, The Name of the Rose and Carry On Buggy. Individuals are shown with a distinct lack of dignity that their public position might demand - warts & all (literally). The sexual predilections of artists & neo-platonist philosophers are brutally revealed - yes, they all liked pretty boys!

However, this is not just soft porn dressed up in doublet & hose. The bedroom games are part of a wider canvas of events - the complex diplomatic & military manoeuvrings that constitute the Italian Wars which involved Italians, the French, German rulers and marginally, Henry VIII. This was a time when religion/politics mixed. The other major theme is the religious anguish of the Pope Leo X's dwarf named in the title as he is converted to a christian gnostic sect that challenged papal infallibility. He survives but fellow worshippers including the aristocratic lady he loves died in agony at the stake - a detailed description is given. The elevation of a new pope brings the diary extracts to an end.

You will learn some serious history & theology - the author is a professional academic moonlighting in a fictional genre. The text is adorned with Latin & Italian tags to enhance the educational purpose. You will get more from the story if you have some prior familiarity with Renaissance culture & remember that Luther is not just an American black icon.

This is a book that complements that IKEA coffee table & could impress visitors with your erudition until the first page is read: "The most powerful man in the world lay sprawled on his bed like a catamite waiting to be buggered." Don't lend it to your mother.

Nick Tyldesley

The Bridge Inn Chesterfield

(On Hollis Lane just under the bypass bridge
in the town centre)

KARAOKE
Saturday 23
December
Sunday 30
December

XMAS DAY
BOXING DAY
Open 12-2pm
8pm onwards

SUNDAY
LUNCH
Every Sunday
from 12
onwards

Tel: 01246 276 740

DISCOS: Sunday 24 Dec.,
Tuesday 26 Dec. Xmas Disco - Fancy Dress,
Sunday 31 Dec. New Year's Eve - Fancy Dress



Happy customers taking a lunchtime break at Leicester's long established gay pub The Dover Castle



THE GALLERY

Derby's longest established gay bar

*The Staff wish
customers old
and new
A Merry
Christmas and
A Happy New
Year*

130 Green Lane, Derby
(Next to Little City car park)
Tel: 01332 368652

INDEPENDENT BOOKSHOP
 69 SURREY STREET
 SHEFFIELD S1 2LH
 (0114) 2737722 - 2758288
 OPEN MONDAY TO SATURDAY

Best choice of Lesbian & Gay fiction. Perfect for presents, calendars, diaries & Xmas cards.

Last 3 weeks before Xmas - open 'til 7.30pm Wednesdays & open 10am-4pm on Sundays.
 LOCAL, RADICAL, A WORKERS' CO-OPERATIVE

Holistic Massage
 by ITEC qualified Masseur
 Secure, Comfortable, Relaxing,
 For more details:
 Ring Tim
 (0115) 948 0975

Curzons
 25 Curzon Street, Derby Tel: 01332 204290

5 YEARS BIRTHDAY PARTY
 19TH DECEMBER
 FREE BUFFET & DRINKS PROMOTIONS
 LOTS OF GIVE AWAYS
 T SHIRTS/ CD'S/RECORDS ETC.
 MUSIC PLAYED FROM THE LAST 5 YEARS
 AT CURZON'S
 FREE ADMISSION WITH FREDDIE'S STAMP
 B 4 11.30

KEITH & DAVE WISH A MERRY CHRISTMAS & A HAPPY NEW YEAR TO ALL

NEW YEARS EVE
 TICKETS NOW ON SALE £5 EACH B4
 £8.50 ON THE NIGHT
 AVAILABLE FROM FREDDIE'S BAR & CURZONS
 PARTY STARTS 9PM TILL LATE
 Tickets are limited - don't be disappointed - get your tickets early!



It all began when Tim and Pete left leafy Surrey and somehow landed up in Milton Keynes or Newport Pagnell to be precise. "We never really intended to move here - it just happened". Pete is a baker and Tim a builder but they decided it was time for a change and just stuck a pin on a property page and it landed on this greengrocery business in Northampton.

"We decided that we would be 'out' in the new business from the start, though Tim was less keen at first but came round to the idea. Then there's nothing for anyone to find out later - no boycotts to deal with. They chose a novel way of doing it.



I'm standing outside their shop which is called "A couple of fruits". We had to register the name of the business before we began trading. On arrival we were greeted with scrambled eggs running down the windows. Soon other people's reactions came tumbling out, generally favourable. Many exchanged knowing looks and mouthed to each other, 'I told you so' as they popped in for their regular orders. The proprietor of a rival business was less charitable. They're queer as coots, don't buy from them', she and her sons exhorted potential customers to boycott Tim and Pete's shop. There followed some paint throwing and damage to their car; but it didn't work. These two were made of sterner stuff and just took a deep breath and got on with the daily grind which seems exactly what the locals did as well.

Said Tim "The last laugh was on us. We decided on a Victorian evening soon after we opened with mulled wine and Victorian prices which was wildly popular. Our 'friendly' nearby greengrocer never had a customer that day!

Now three months later, living above the shop things have been plain sailing. Lots of elderly people and families come to the shop as well as gays and lesbians. "We knew it would be just a matter of time before people sussed we were not brothers", said Pete, smiling ruefully; like the time when three women were deep in discussion. One said to Tim 'how do you cook this'. I automatically cut in saying, "It's no good asking him, I do the cooking, cleaning and the washing, he won't know. 'Oh', said one of the women, 'I have one at home like that!' Everyone laughed.

TROLLWATCH

In outdoor cruising areas, please think before recklessly discarding those used condoms, lube packets and tissues. Many regional cruising areas look as if they're permanently celebrating christmas with the amount of white and coloured tissues that festoon the trees and carpet the ground like ten tons of artificial snow. If you're out for an all day or all night mega-troll (be it sponsored or not) please don't throw empty drinks cans down. We know that a lot of trolling areas don't have litter bins, but as the majority of cruisers arrive by vehicle, surely it isn't asking too much to take your rubbish back with you? Litter of an apres sex nature merely heightens the police's interest in areas and apart from them thinking we're dirty queers, it means we're dirty queers in a different sense. Think about it.

LORETTA LARD



She's back! Out on parole after a spell in one of Her Majesty's B+B's for running off with the Christmas Club money, Outright's resident kitchen temptress Loretta Lard returns with a scrummy meat-free tippie-ette for the festive season. "One finds," she said, "that one can continually update this delicious beverage by flinging in a couple of bottles of plonk."

Loz's Mulled Wine

Get down Thresher's and nick:

2 x 75cl bottles full-bodied red wine

Then find:

2.5 pints water (for the hangover the next day)
 1 orange stuck with cloves
 2 oranges, sliced
 2 lemons, sliced
 6 tablespoons granulated sugar or honey
 2 inch piece of cinnamon stick
 2 teaspoons finely grated fresh root ginger
 2 tablespoons fruit liqueur (but not out of those nasty chocolates from the 'Everything's £1' shop), Cointreau, Grand Marnier or cherry brandy will do.

What to do:

Put all the ingredients into a saucepan, heat to simmering point, stirring until all of the sugar has dissolved. Keep it at **simmering** point for at least 20 minutes, during which you can neck a couple of gins sharpish. But!! **Do not boil** or all the alcohol will evaporate and then you may as well give your mates Tizer. This can be made in advance and re-heated when you all stagger back from the pub. Serve it warm in half pint mugs (should do for 12 servings) or else divvy it up between 'em in teacups.

CLUB BIZARRA
 Disco Dollies
 of all persuasions are invited to
 Dress to Impress
 Glam, T.V. Rubber, Leather, PVC, Lingerie, Lycra
 Play room furnished by
 HIDEBOUND
 Erotic fashion spectacular
 by
 TENTACLE
 DJ
 John of the Wicked Bitches
 Admission £7-50
 December 22nd
 the house
 Huntingdon Street
 Nottingham

Staff and customers at Leicester Resource Centre, 45 King Street on a busy Saturday afternoon

NOTTINGHAM LAW CENTRE

FREE ADVICE

Advice and representation on
 Welfare benefits, Housing,
 Employment,
 Immigration & Nationality
 Drop in 4 mornings weekly,
 9.45-12.45pm
 (Mon, Tues, Thurs & Fri)
 plus
 Thursday evening
 Solicitors panel
 6.30pm-8pm

119 Radford Road, Hyson Green,
 Nottingham, NG7 5DU.
 (0115) 9787813

derby friend
Volunteers Required

If you are interested in becoming a volunteer with Derby Friend to help run the phone line, drop in centre or the sexual health project, please contact us now!

Either by writing to
Derby Friend
 PO Box 185
 Derby
 DE1 2YN

Or by telephone on Wednesday evenings between 7pm & 10pm (Answerphone at other times)
01332 349333
 Closing Date 7th January 1996
 Training will commence 16th January 1996



SHEFFIELD WOMENS CULTURAL CLUB

The club is open to women every day for teas, coffees, tasty food and alcoholic drinks. Children are welcome until 8pm and there are toys and books to amuse them. The atmosphere is friendly and a warm welcome is extended to women coming for the first time. The Club is at Grinders Hill, Paternoster Row, near the Showroom cinema.

December Events include:

- Sat 2nd - Silk and Jewellery making workshop, 12 midday.
- Sun 3rd - Discussion on sale of tuna in the club, 6pm.
- Tue 5th - Women working in HIV/AIDS field, speakers & discussion, 7.3pm.
- Wed 6th - Glass bending workshop, 8pm.
- Thu 7th - Quiz, 9.15pm.
- Sat 9th - Xmas craft fair, 12-4pm, Mother Xmas & her Elf.
- Sun 10th - Art & Craft Meeting, Mappin Gallery, 11am-4pm.
- Tue 12th - Card games evening, 8.30pm.
- Wed 13th - Over 40's lesbian get-together, 8.30pm.
- Thu 14th - Quiz, 9.15pm.
- Sat 16th - Club Xmas Party Works Station, Paternoster Row, Pink Ladies & disco, 9pm.
- Thu 21st - Quiz, 9.15pm.
- Sun 24th - Xmas Eve Special, 8.30pm.
- Thu 28th - Quiz, 9.15pm.
- Sun 31st - New Year's Eve Do, Guest DJ, 10pm.

Out Northwest

Did you identify as lesbian, gay or bisexual before 1975? Did you live in the northwest of England during that time? If you answered yes then two researchers (one lesbian, one gay) are waiting to hear from you. They would like to use stories and events from the era to produce a book, exhibition and performance piece. If you'd like to help with this project please write to Out Northwest, PO Box 407, Manchester, M60 1EW. All replies will be treated in confidence.

CHRISTMAS/NEW YEAR
in Amsterdam? Very central apartment, close to clubs, available December 23 to January 10. Details from Eric: 00-3120-623-0055.

CHRISTMAS IN WALES

A PERSONAL GROWTH EVENT FOR GAY AND BISEXUAL MEN

21st - 28th December at Manorbier Youth Hostel

Prices on a sliding scale

For more details write to:

E.C.C.

c/o Outright!

PO Box 4

West PDO

Nottingham

NG7 2DJ

REVIEW

Bad Attitude

Bad Attitude is a radical women's newspaper produced in an intelligent and interesting way.

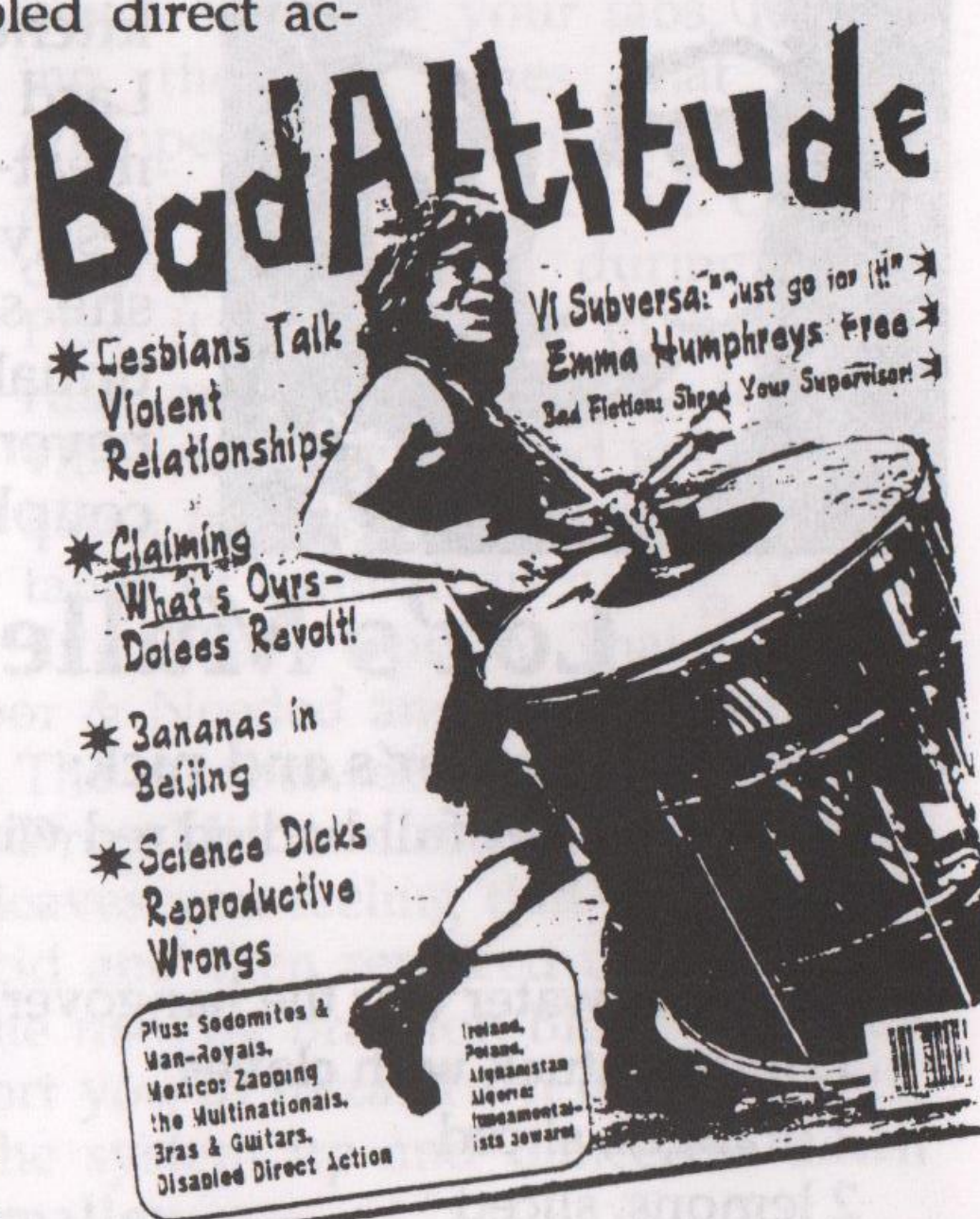
it is packed with information and has a definite international flavour with reports of women's issues from around the globe.

The Autumn/Winter issue includes excellent articles on the Beijing Conference, disabled direct action and lesbian domestic violence alongside interviews, book and music reviews as well as the compulsory Short Story!

Bad Attitude is a useful forum for discussion on issues that more mainstream publications usually skirt around, and they also supply contact addresses and numbers for all organisations mentioned.

For a magazine produced by two volunteers it is surprisingly professional, and at £1 a definite bargain. So if you want to keep your finger on the pulse of Women throughout the world, get Bad Attitude.

Louise Paine



EVENTS AT 45 KING STREET

Leicester LGB Coffee Bar, Wednesdays 12-2pm (women only). Thurs. 12-2pm, Fri. 12-2pm, Saturday 10.30-5pm. 45 King Street, Leicester.

Self-Defence for lesbians, a free 4-week course for lesbians is planned for January, to book a place/more info. phone Jill (0116) 2547412.



Stonewall Breaks has come up with a solution to combatting loneliness and isolation with cosy weekends away in gay-safe, scenic places. a chance to make new friends in a friendly and supportive setting. From the 30th December to 2nd January (3 nights) you can celebrate New Year with 20 other gay/bi. men in a snug Pennine farmhouse in Yorkshire. Log fires and exposed beams add to the seasonal atmosphere. There's singing, dancing, storytelling, silly games and much more. The dormitory-style accommodation is comfortable and the all-inclusive cost is on a sliding scale from £50, including wine with evening meals and all social activities. Booking form and more info. from Richard Stonewall Breaks, PO Box 4, West PDO, Nottingham, NG7 2DJ. Tel: (0115) 9780124.



NOTTINGHAM CITY CENTRE

*Friendly and relaxing *Ele ant Victorian Building *En Suite rooms available *Colour TV in all rooms *Tea & Coffee making facilities *Licensed bar *Close to bus & train stations *Warm welcome to Gays & Lesbians

Park Hotel (City Centre)

5-7 Waverley Street

Nottingham NG7 4HF

Please telephone Sam on:

0115 978 6299 / 0115 942 0010

0115 942 4358 (Fax)

REVIEW

DIANAGATE - Coming to a conversation near you - soon!

I must admit that I made a special effort to avoid watching Dianagate - Planning to go out and stay out until it was all over. But, as chance would have it, I ended up with someone who spent the whole evening whinging about missing it. And who eventually, visibly twitching, dragged me off to a tiny back room, crammed with closet 'Hello' readers. Where we watched the final 20 minutes on a black and white portable.

As the interview ended, I swear, the lights dimmed as the nation moved, as one, to switch the kettle on.

Next day, congratulating myself on my almost unscathed escape, I was unprepared for the programme's impact. Everyone was talking about it; in the post office, on the bus, checkout operators discussing it from till to till while sliding bar-codes over scanners on automatic pilot.

Retreating into cyberspace, I found even the Internet was buzzing with it, with total strangers all over the world begging me for snippets and America in a frenzy of anticipation for its screening the following evening.

Lurching, shell-shocked, back into Real Time, I felt like the only person in the universe who hadn't watched it or wasn't waiting avidly to do so.

So I felt like I'd been given a second chance to join the human race when I was asked to write this review and the tape dropped through my letter box. And I wasn't at all surprised when my normally well laid-back neighbour appeared that evening, all set for a couple of hours animated discussion on the apparently imminent collapse of the monarchy.

So I watched the tape and any related items I could fit in (such as conscientious reviewer!). And what did I see?

A strong, determined woman. Who, despite her privileged position, has faced problems that most of us will, happily never know.

The emotional violation of having every detail of her psychological state made public property. The humiliation of the world-wide publicity surrounding her husband's rejection and infidelity. And above all the knowledge that hostile hands were controlling the course of her life.

I see the interview very much as Diana's attempt to regain control of her life. And a very astute - preemptive strike on the official campaign to make her disappear.

Proving her to be not quite the brainless tart I'd always considered her. I'm glad to be proved wrong. What can I say? Nice one, sister!

Cathy White

THE DOVER CASTLE

34 DOVER STREET
LEICESTER

Terry & Staff invite you to our
CHRISTMAS EXTRAVAGANZA

Xmas Eve until 11.30pm

Xmas Day until 11pm

Boxing Day until midnight

New Year's Eve until 12.30 am

New Year's Day until 11.30pm

Featuring cabaret free admission disco
Xmas night in a warm friendly atmosphere

Free festive buffet

We would like to wish our customers old &
new a very Merry Christmas and a Happy
& Peaceful New Year

LESBIAN?

LOOKING FOR A PLACE TO LIVE?

ON OFFER:

?? FRIENDLY HOUSING
CLEAN COMFORTABLE ACCOM.
REASONABLE RENT
GREAT NEIGHBOURS
SECURE TENANCY
CHOICES YOU NEVER DREAMT OF..

DOES THIS SOUND TOO GOOD TO BE TRUE?

WELL IT ISN'T!

CONTACT: BANNA, C/O NOTT'M WOMEN'S CENTRE,
30 CHAUCER STREET, NOTTINGHAM, NG1 5LP.
TEL: 0115 9411475.

The Natural Food Co.

We're Independent, Traditional and Different!!

Serve yourself from the largest selection of loose wholefoods in the city

Sacks of grains, Beans, Nuts and Nibbles
- Plus -

Cheap freshly packed herbs & spices

*Herbal teas, Dried fruits etc. *

A growing selection of takeaways

*Chilled foods, frozen foods * and more....

37 Mansfield Road, Nottingham

classifieds

HOW TO REPLY. Seal each reply in a separate envelope. Write the number of the Box you are replying to in the top right hand corner of each envelope. Place them in a larger envelope. Enclose two loose first class stamps for each reply: replies without stamps are not forwarded. Address the outer envelope to Outright, stamp and post to: PO Box 4, West PDO, Nottingham NG7 2DJ.

men's personal

STUDENT, ALTERNATIVE type guy, 6', slim, non-camp seeks tall slim long-haired guy with goatee beard who wears black clothing. Photo or phone. Derby. Gen. Box 791

LEICS: GUY (28) with great personality, fairly intelligent, caring, loving into most sports especially football seeks guys 21-35 for socialising, fun, f'ship. Gen. replies only. Box 792

NOTTS: 33 SMOOTH shaven lonely, prev. replies write then disappear without looking! You under 35 (18+) together this Christmas will be great. Don't be shy & try me. Box 793

MANSFIELD AREA: 35 seeks younger guy under 30 (18+). Must be honest & reliable for 121 rel. Tired of being messed around. Your photo ensures reply. Box 794

E.MIDS/ANYWHERE: Raunchy boot-boy couple (36/34) hairy, w/e, versatile wlm singles/couples 25-45 for hot horny fun. CP, jocks, WS, red. Travel/accom. Explicit photo detailed letter gets ours. Box 795

LEICS: SLIM, fit, healthy, gymwise, many interests seeks slim-med mainly attractive man for f'ship/121. You 28-42. I'm 55, caring, loyal, n/smoker. ALAWP. Box 796

E.MIDS/ANYWHERE: N/scene, s/app & s/acting masc. guy seeks sim. poss hairy with curly hair (maybe balding) into arts for f'ship, maybe more. can host/travel. Box 797

NOTTS MALE (40) seeks happy kindred spirits. Swings from deep soul to house & back to classical. Masculine, healthy, safe. Box 798

E.MIDS NEWCOMER (30's), handsome, fit, VWE wlm smooth masc. fit muscular men 30-50 for fun & mutual exploration. Willing to try new things.

RAFFLES SAUNA

*Steam Room * Sauna*

*Gymnasium *Hot tub *

Snax Large area *

Come and see us soon!

We are open 1pm-10.30pm,

Monday-Saturday

Sunday 2pm-10.00pm

£6 entrance (conc. available)

Unit M, Bradgate Street, Leicester
(off Blackbird Road),
(0116) 251 3308

man will train younger (18+) to delight in submission. Write to prove you're worth the effort! Safety assured. Derby. Box 811

LEICS: ATTRACTIVE guy 30's seeks other goodlooking guys that would like to come to my intimate parties. 7-8 guys welcome. Photo ess. ALA Thanks. Box 812

DERBY/NOTT'M/anywhere: Guy 40's n/scene s/acting goodlooking sincere wlm sim. 40's-50's for fun/f'ship, poss. more. Video swaps. Photo app. ALA. Box 813

LEICS: 22 y/o smart, dependable sexy & determined to find man of dreams. Looking for a horny, sincere man 25-35 to share life & love. Box 814

E.MIDS: TALL, blond, v. attractive passive 27 seeks tall masc. active guy under 40 (18+) for fun, passion maybe love. Photo/ph.# assures reply. No time-wasters. Box 815

CUTE 25 y/o male looking for any motorbikers into leathers and one-piece (rubber suits) to put me into total cover. Gen. replies. Box 816

NOTT'M: GAY couple seeks friends for socialising & nights out. Box 817

LEICS: N/SCENE 30 goodlooking passive 5'8" 10.5 stone likes clubs on 121 basis. I have dark cropped short hair. You tall, fit, hairy, gen. Photo please. Box 818

BUTT WORSHIPPER (50's) wants to sensibly warm yours (20-35) before exploring it with his incredibly active tongue. Must have stamina for long sessions. ALA. Box 819

NOTTS GUY n/scene, s/acting seeks horny fun with males. Gay/bi/pensioners welcomed. Me 47 bearded oversexed. Sub/dom games played, over knee etc. Gen. ALA. Box 820

NAKED in Notts. Any fit 18+ guys into naturism fancy trying to start a group? Any suggestions. Discretion assured. Box 821

NOTT'M: SEARCHING for f'ship & n/strings fun with artsy intelligent under 35 (18+) n/scene sim. type/s. ALAWP. Box 822

NOTT'M GUY attractive 30 blue eyes, dark short hair, W/E seeks masc. guy 25-35 for those evenings out those hot sweaty nights of passion. Photo req. Box 823

CHESTERFIELD GUY 5'9", boyish, muscular build, blue eyes seeks any shy 19-26 y/o for soul mate. Must be clean, honest & like cosy evenings in. Box 824

NOTT'M: SAW you in taxi 8 Nov. Sneinton Rd/Carlton Rd. junction. Me crossing road. We've met before, please contact me. Let's be friends! Box 825

GAY MALE (32) slim build, blue eyes, brown hair interests walking, theatre, massage, tight underwear, Lycra etc. wlm sim. 28-35 in Notts. area for f'ship/rel. Box 826

NOTTS/DERBY: Guy (21) seeks guys for fun & f'ship, poss. 121? Told good-looking. Photo app (ret). So come on guys, get in touch! John XXXX. Box 827

CHRISTMAS in Nott'm alone? Don't be, Brian has new flat, handsome, fun with dinner & present on tree for sim. Go for it, write soon. Box 828

NOTT'M GAY guy (23) easy going down to earth seeks sim. with personality & GSOH for nights in/out & occ. scene. ALAWP. Box 829

LINCOLN: CHEF (21) stocky build, boyish looks seeks gay friends, poss. 121 for nights in/out. Tattooes a bonus. Let me heat you up with safe fun. Box 830

GAY BLACK prof. male (25) into fitness, eating out, pubs, cinema seeks male 21-35 for fun & f'ship with a view to more. ALAWP. Box 831

YORKSHIRE: GUY slim (38) passive seeks loder active guys for no strings fun. Photo/phone gets instant reply. My place only, no transport. Box 832

GAY GUY mid 30's GSOH seeks sim. Notts/Derby/Leics for fun, f'ship, nights in/out & generally good times. Personality more imp. than looks. Box 833

BARNLEY/S.YORKS area: Dark hair, 28, med. build would like to hear from black guys or anyone who is into briefs swaps, photos. Naughty letters welcome. Box 834

DAYTIME FUN, 18-35? Gay/bi, exp/ inexp, accom. or travel. Me: 36, tall, slim, hairy, relaxed, friendly, responsible. Photo

HELPLINES

CHESTERFIELD HAND, Mon 1-3pm, Sun 7-9pm. 01246-550550.

COVENTRY FRIEND, Mon, Wed, Fri, 7.30-9.30pm. 01203-714199.

COVENTRY LESBIAN LINE, Wed, 7.30-9.30pm. 01203-717166.

COVENTRY MESMEN, 01203-224090.

DERBY BODY POSITIVE, Tue 10.30am-1.30pm, Thur 11.30am-4pm, 01332-292129.

DERBY FRIEND, Wed, 7-9.45pm. 01332-349333.

DERBY LESBIAN LINE, Wed, 7-9pm. 01332-414111.

DERBY AIDS LINE, Mon & Thur, 7-9pm, & Thur, 2-4pm. 0800-622738.

GRIMSBY/ SCUNTHORPE AIDS LINE, 01724 276660

GRIMSBY & DISTRICT GAY HELPLINE, Tue & Thur, 7-9pm. 01472-251818.

LEICESTER LESBIAN/ GAYLINE, Mon-Fri, 7.30-10.30pm. 0116-255-0667.

LEICESTERSHIRE AIDS SUPPORT SERVICES, Mon-Fri, 9.30am-5pm. 0116-255-9995.

LINCOLNSHIRE AIDS VOLUNTARY GROUP, Mon, Wed, Fri, 9am-9pm, & Tues, Thur, 9am-5.30pm. 01522-513999.

LINCOLNSHIRE LESBIAN & GAY SWITCHBOARD, Thur & Sun, 7-10pm. 01522-535553.

MANSFIELD/ASHFIELD POSITIVE SUPPORT, 01623-26254

NATIONAL BISEXUAL PHONELINE, Tue & Wed, 7.30-9.30pm. 0181-569-7500.

NORTH STAFFS LESBIAN & GAY SWITCHBOARD, Mon, Wed, Fri 8-10pm, Sun 1-3pm, 01782-266998.

NORTHANTS GAYLINE, Tue 6.30-9.30pm, 01604-39722.

NORTHANTS LESBIAN LINE, Tue 7-9.30pm, 01604-39723

NOTTINGHAM LESBIAN & GAY SWITCHBOARD, Mon-Fri, 7-10pm. 0115-941-1454.

NOTTINGHAM LESBIAN LINE, Mon & Wed, 7-9pm. 0115-941-0652.

NOTTINGHAM FRIEND, Tue, 7-10pm, 0115-947-4717.

NOTTINGHAM UNIVERSITY LESBIAN & GAYLINE, termtime Mon, 8-10pm. 0115-951-4999, internal 4999.

PETERBOROUGH FRIEND, Tue & Thur, 7.30-9.30pm, 01733-61499. Answerphone other times.

SCUNTHORPE GAY MEN & WOMEN, Wed & Fri, 7-9pm, 01724-271661.

S YORKS CONNECTIONS, Thurs 7-10pm & Sun 3-8pm, 0122-673-0703.

SHEFFIELD AIDS LINE, Mon-Thur, 7-10pm, 0800-844334.

SHEFFIELD GAYPHONE, Mon-Wed, 7.30-9.30pm, 0114-258-8199.

SHEFFIELD YOUNG LESBIAN GROUP, 1st & 3rd Weds, 7.30-9pm, 0114 258 1238

WELLINGBORO' GAYLINE, Thur, 6.30-9.30pm, 01933-223591

if poss. but ALA. Confidence/discretion assured. Box 835

CHESTERFIELD LAD (23) seeks guys 18-25 for safe fun & f'ship. Black & Asian guys particularly welcome. If you fancy some A/F then get writing. ALAWP. Box 836

NOTTS GAY lad (18) seeks gay lad 18-30 for fun, f'ship & more. Send shirtless photo if poss. Likes pubs, clubs 121. Get writing. XXX Box 837

LEICS: GAY male late 40's, caring, sensitive interests walking, travelling, socialising, videos, clubs, pubs seeks friends 20-35. Photo app. Box 838

GARY, 23 goodlooking, short hair, s/acting into soccer kit, Leeds Utd., trainers, music & spliffs seeks mates 18-25 anywhere for fun/f'ship. ALA. Box 839

MIDS: ATTRACTIVE Asian (yes Asian!) 30's, honest, affectionate, intelligent, wonderful smile, nice brown body seeks guys 25-40, gen. honest for 121 of f'ship. ALAWP. Box 840

NOTT'M & LEICS: Lively couple 30's & 50's enjoy safe fun with other guys or couples. ALA. Box 841

LONELY 21 Y/O gay guy looking for fun, f'ship, perhaps 121 also anyone offering reasonable employment, get in touch. ALAWP. Box 842

NOTT'M GUY (26) s/acting, 5'9", blue eyes, brown hair, caring, honest, sincere, into cinema, music, walking, swimming seeks guy 28-38 for fun, f'ship, maybe more. Box 843

NOTT'M/LEICESTER/ANYWHERE: 25, goodlooking, 6', graduate, fit, adventurous, romantic guy seeks slim younger guy 18-23 for f'ship/121. Get writing! Phone photo appreciated! Box 844

PLEASE REMEMBER!
27 WORDS MAXIMUM PER
FREE AD & 2x1st CLASS
STAMPS PER REPLY!

British School of Shiatsu-Do

Offers both day courses and the full professional training in Shiatsu-Do. We have regular open evenings and our next Day Course is on Saturday 25th November.



Please phone Linda Sharples on 0115 9820334 for further details

BARRIE WARD & JULIAN GRIFFITHS

SOLICITORS

5, Clarendon Street,
Nottingham, NG1 5HS.
Telephone (0115) 941 2622
After hours (0115) 960 2324

mixed personal

ATTRACTIVE BI'O" male, Scorpio v.w/e seeks feminine bi female for exciting times. 18-35. Sheff/Notts/E.Mids. Box 130

ARTY FEMININE bi (18) likes cosy pubs, music, theatre, good food, deep thoughts seeks discreet feminine malcontent with GSOH to rail against life & love. Box 131

women's personal

FEMININE GAY woman (23) sincere, caring but lonely seeks sim. for f'ship, hopefully more. Gen. replies only. I love women with long hair! Box 400

LEICS: BLACK lesbian seeks lesbian 30+. Let's smile sharing loving embrace at an easy pace so 121 may never become the past. Must like children. Photos please. Box 401

NOTTS: MATURE prof. seeks intelligent dyke to share ideas, conversation, maybe bed. Box 402

ALTERNATIVE & ARTY - sexy & spiritual - delightful dyke (25) seeks playful friends/lover for winter retreats. Must be openminded, lively & political. Write sending best chat-up lines & photo. Box 403

NOTTS LESBIAN seeks fem for love & laughter. GSOH needed, age unimp., any area. Photo would be nice. ALA. Box 404

GAY FEMALE (26) Lincs. sincere, loyal, honest, loving seeks sim. for 121. Likes music, travel, fun nights out & romantic nights in. Photo if poss. No bi's. Box 405

SHEFFIELD LESBIAN (28) req's feminine woman into reggae music. N/scene, likes staying in smokes spliffs, drinks. Butch looking. VGSOH. No kinky. Woman 22+ ALA. Box 406

GAY WOMAN blonde feminine 32 into lipstick, leather miniskirts, aerobics, cycling, hiking seeks gay or bi dominant woman. Sheffield/Derby. ALA. Box 407

GAY FEMALE lonely beached whale seeks other plump partner to make the Earth move. Likes animals, S/M. Any age/race. ALA. Salli, Lincs. Box 408

DERBYS: GAY female (49) wishes to meet honest reliable women, n/smoker but GSOH. Also v. caring. Married or single. ALA. Box 409

LEICS: LESBIAN (20) big, bubbly but inexp. seeks loving n/scene femme 18-25 for f'ship & poss. rel. Loves cinema, pubs & folk music. Coalville area pref. Box 410

LIKE DANCING in the rain & don't think it's insane, want to do something different again? 32 wishes to make new friends, socialise more. Would you? ALA. Box 411

GAY FEMALE, kind, romantic, loving, prof, smart, fairly attractive (52) wide interests seeks sincere loving mature woman, SOH to build sound f'ship/rel. N/scene. Box 412

accommodation

NEW BASFORD: Small single room for gay male. N/smoker & solvent please. £161 pcm inc bills, exc. phone. 0115 970 6659

MANSFIELD: HOUSE share req'd with gay male. Must be employed. 5 mins from town centre in a spacious house. £40 pw inc. 01623 662836.

NOTT'M NEAR CITY:
Room to let for gay
male in house share. £45
pw inc. except phone.
0115 986 2028

WELLINGBORO': VERY pleasant room for gay person £50 pw (bills 7 meal inc.). Smoker Ok, DSS poss. London 1 hour (train). Mark: 0956 700025/01933 270847

ROOM TO LET. Countryside setting close to Eastwood, Notts/Derbys border. Male/female welcome, share with one male. Working persons only please. £35 pw 0173 711395

LEICS. SCRAPTOFT area: Carer wanted for slightly disabled person in bungalow. £25pw + bills. Please phone Nick 0116 243 4145

LEICS: MALE req'd for house. Own room, share facilities. Parking space. Housing benefit considered. Meals available. 0116 243 3984 after 6pm. Answerphone during day.

LEICESTER CENTRAL FLATSHARE,

£35excl.

Peter 0116 254 3039.

LOUGHBOROUGH: nice room available for lesbian in interesting house. £40pcm incl dog, cat, Rayburn. Ev, 01509 217854.

wanted

ANYONE GOT a copy of Mikey Dread's "World War III" LP they wanna flog? Box X1

employment

RELIABLE PERSON needed to help with housework 3-4 hours per week. Suit student. Northampton. Please phone Peter: 01604 459322

second hand

FOR SALE

Durst B30 photographic enlarger, good condition, £50 o.n.o. 0115 978 0124.

messages

JOHN:
HAPPY 9th
ANNIVERSARY!
ALL MY LOVE, SIMON
XXX

HOW TO PLACE AN AD. Complete the form below. Write clearly please, and punctuate! Keep ads short and sweet: **max 27 words** OUTRIGHT may refuse or amend ads. One free ad per issue. Enhance your ad in display for £4. Commercial advertisers please write or phone for rates.

cut here

CLASSIFIED ADS

Complete and return to Outright,
PO Box 4, West PDO, Nottingham, NG7 2DJ.

Mens ... Womens ... Mixed ... Accom ... / Display (£4 cheque/PO)

Name.....
Address.....
Post code.....