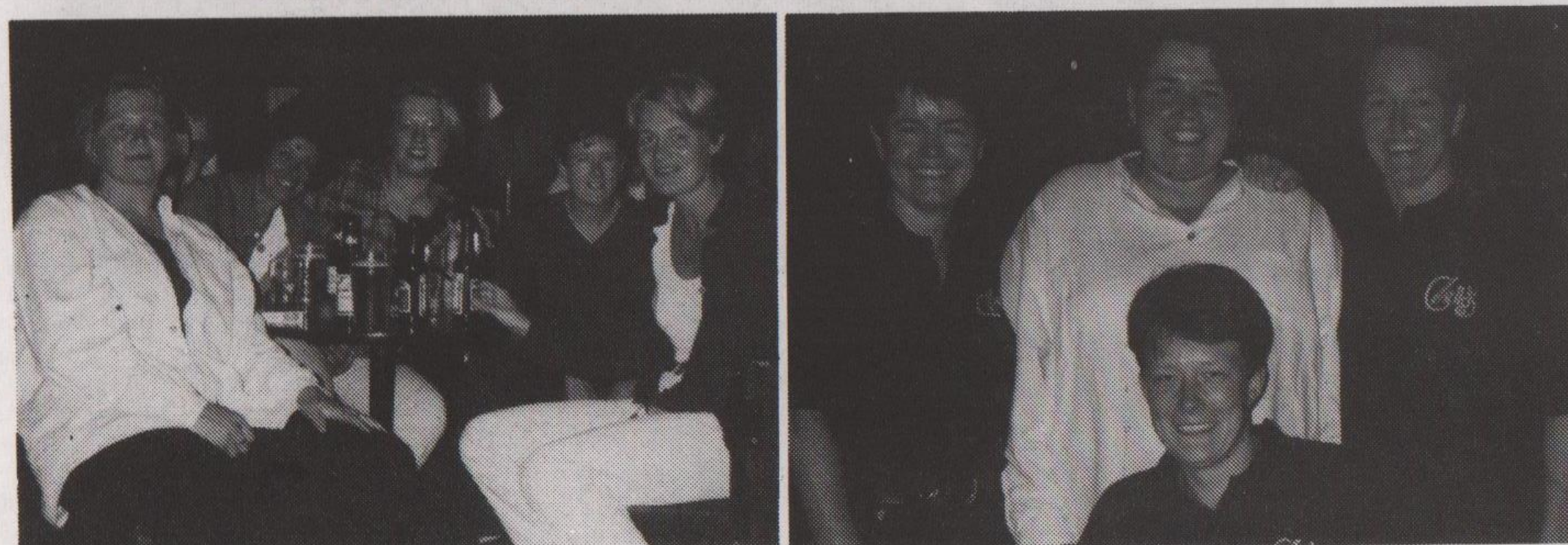




Enjoying Happy Hour at Cello's Women's Disco



Cello's door staff, L-R: Linda, Jo, Allie, Tara (front)



## Raise Your Glass!

Two well-known Derby figures, Robin Wood and Jeffery Tillett (pictured left and right) celebrate 25 years of happy cohabitation. Out as gay, both Robin and Jeffery have been long-standing leading members of Derby City Council, Jeffery having been leader when the Tories controlled the Council. To celebrate the day they tied the knot, a special screening of *The Village People* in 'Can't Stop the Music', takes place at Derby Metro Cinema on Sunday 11th August at 7.30pm. Some tickets are still available from 01332 342321.

# outright!

august 1996

issue 76 for gays, lesbians and bisexuals free

## FIRST CLASS AWARD

Leicester's Lesbian, Gay and Bisexual Centre are celebrating a recent award of £49,000 by the National Lottery Charities Board specifically to further work with young people. The Centre at 45 King Street has run a youth group for many years. In 1995 the Centre was successful in getting funding for the first time to employ two workers, who have given a lot of energy and commitment to the group and taken it from strength to strength. The funding for these posts was due to expire September 1996 which led to the successful lottery bid which covers three years funding. A youth worker will be employed for 15 hours a week as well as sessional workers to help develop and expand the services currently on offer and recruitment advertising begins soon ready for the new posts to begin in October.



Photo: Gareth Miller

### Excellent application

Despite a cynical ploy by Prime Minister Major to divert media attention from one of his frequent Euro-embarrassments by attacking the grant award, the head of the Lottery Board remained defiant in the Board's decision: "All groups offered grants sent excellent applications and were assessed thoroughly against our criteria", he said.

Chris Wroe, Chair of the Management Committee commented: "This is brilliant news and a reflection of the hard work put in over the years. It's taken a long time to build up the service and get the money that young people in our communities deserve. None of this would have been possible without the hard work of all the volunteers who kept the group going when there was no money. Also the energy of the current workers Emma and Steve, and the co-ordinators, Jill Parker and Fee Scott who put great efforts into securing the funding which resulted in the successful bid, and of course the ongoing enthusiasm of the young people who have been part of our youth group over the years, and who show us how much the service is needed and valued".

### Windows broken

However in a recent development since the high-publicity award, Centre workers arrived at 45 King Street on Sunday 21st July to find that the first floor windows had been broken by beer bottles the previous evening. Said Chris Wroe: "The police were informed and we are appealing for anyone who witnessed anything suspicious to contact the Centre".

If anyone would like to find out more about First Out or any other services provided by the Centre they can contact Fee Scott or Jill Parker on 0116 254 7412.

**All lines lead to  
The Funky Junction**

Members of Leicester's First Out youth group.  
Back row, Jo & Steve; front row, Chris, Ben and Steph.

## PHENIX

A R T S

### Dick (cert tbc)

Fri 9 Aug 9.30pm • Sat 10 Aug 6.00pm

Provocative short films which won the ICA in London's annual Dick Award.

### Beautiful Thing (15)

Thu 22 Aug 6.15pm • Fri 23 Aug 7.00pm

Sat 24 Aug 9.00pm

"The most likeable gay crossover hit since *My Beautiful Laundrette*." Time Out

### La Reine Margot (18)

Sun 1 Sep 7.00pm

Big budget historical extravaganza about the murderous religious and dynastic conflicts of 16th century France.

### Stonewall (15)

Wed 11 Sep 6.00pm • Fri 13 Sep 4.30pm

Sun 15 Sep 3.00pm

An astutely observed film about the gay underworld in New York as the gay club keeps getting busted and the tension boils over.

Tickets £3.80 (£2.80) • Box Office 0116 255 4854  
Phoenix Arts • 11 Newarke Street, Leicester LE1 5SS

## THE ADMIRAL DUNCAN

Lower Parliament Street, Nottingham (0115) 950 2727

Don't forget we are a members' club  
Membership is free but you need to apply  
48 hours before you need to use the Club.

Members can bring up to 4 guests  
on each visit.

## On Wednesday 21st August GRAHAM'S SUMMER BALL

sponsored by Martini Metz  
(only £1.50 all night)

Free entry ticket, £25 prize  
for the most exciting and  
revealing legwear.

Lots of 70's and 80's summer  
sounds, cheap drinks specials all  
night (see flier in club for details)

I AM OVER 18

Name .....

Address .....

.....

Postcode .....

Date of birth .....

Signature .....



## ▽ Briefly..

▽ **Are there any people** who work at home or in small offices or work spaces who might be interested in renting in lesbian, gay and bisexual space in Leicester? This is where we would rent people an office space, desk, phone and pay for heat and light etc.

No definite plans yet but the Lesbian, Gay and Bisexual Centre are considering the idea and need to know if it's something you need! Contact Fee Scott on 0116 254 7412 to register an interest (however slight).

▽ **Nottingham Lesbian and Gay Switchboard** are currently looking for more volunteers. Phone for details: 0115 941 1454, (Mon-Fri, 7-10pm).

## Firm thighs ... knobbly knees ... hairy chests ...

If you have them, want to flaunt them and keep them in shape at the same time, here's something which might interest you ...

A gay/bisexual football team is being formed in Leicester, and is looking for players. All you need is enthusiasm - age, fitness and ability don't matter (the bit about firm thighs was just to attract your attention!)

There are already 5-a-side teams in other parts of the country, including Nottingham and Birmingham, and there are plans to play occasional games against other gay/bisexual teams.

For more information please call Gareth on 0116 270 0137.

## GAI Project Outreach

Summer's here and with it the first outreach workers of the season. Over the next few months, like any decent person, you might want to visit some favourite beauty spots to enjoy the sun, the warm evenings or whatever else comes up! You might decide on sightseeing and visit a local cottage (we don't mean Anne Hathaway's).

That's just when you might meet some of the GAI Project's outreach workers. They're not there to spoil anyone's fun - just the opposite. They're there to help people do whatever they want to do safely (in every way). They'll be carrying condoms, information and be ready for a quick chat about their work or anything else. They'll always be there in pairs and throughout the Nottingham area you should recognise them by their rainbow T-shirts.

In North Nottinghamshire, the GAI Project is running a pilot project which goes on until December. You can recognise the North Notts outreach workers (Gary, Paul and Tony) by the white caps they wear when working. You'll also meet them at Blue Monday at the Yard in Mansfield every month and they're starting a new social and support group for gay/bi men in the area. More details next month.

## WOMEN'S AWAY WEEKEND

A Leicester lesbian is organising a weekend away in North Yorkshire, staying in a farmhouse, with beautiful coastal and Moor walks at hand. The event runs from the weekend of 16th-18th August and is open to all women whether they are lesbian or not. Contact Helen on 0116 291 2128 for more details.

## USE YOUR BUYING POWER

**HIZIKI**

Buying from countries and companies with a commitment to social justice - Hiziki has the widest range of wholefoods, fresh bread, take-away snacks, organic fruit & veg, vegetarian convenience foods, and organic wine & beer in Nottingham. We also stock many natural remedies, cruelty-free toiletries & environment friendly cleaning products.

5% discount for UB40s, OAPs & students on Wed/Thurs. Hiziki is a workers' co-operative

15 GOOSEGATE, HOCKLEY NOTTINGHAM

## FOR POSITIVE CHANGE

## Lincs Funday

A Lincolnshire gay man is organising a 'fun day' in the grounds of a local pub which will take place between 1pm and 2am on Saturday 21st September at the Kings Head, Gunby Corner, near Skegness.

Danny Singleton, chairperson of GLOBE told Outright that events so far confirmed include outdoor and indoor entertainment and information stalls, tombola, a talent show, beauty contest, bouncy castle, prize bingo. These events finish around 8pm the evening entertainment kicks off with OBSESSIONS disco, strippers, a drag artist, happy hour and a guest DJ.

The event has so far been sponsored by several trade unions, including UNISON, as well as self-help groups, NACRO and Gay Anglia.

Said Danny: "The fun day promises to be a popular event, with lots of gay and gay-friendly organisations from the surrounding areas. I hope this will help to break down some of the isolation that rural gays can feel".

Further details from Danny on 01522 689745 or Lincolnshire Lesbian & Gay Switchboard on 01522 535 553 - see Helplines on page 8 for times and details.

## mushroom

B.O.O.K.S.H.O.P

## TRASHY TO TRANSCENDENT

Get your summer reading from us

## 'HOT CHICKEN WINGS'

Stories transgressing Jewish and lesbian taboos, paperback, £6.99

## SAKHIYANA'

Lesbian desire in ancient and modern India, paperback, £12.99

## 'LIKE PEOPLE IN HISTORY'

Felice Picano, paperback, £6.99

## 'QUEER SPIRITS'

Gay men's myth book, paperback, £11.99

10 Heathcote St, Nottingham NG1 3AA. 0115 958 2506

## ▽ Briefly ...

▽ **Talkback** lesbian discussion group meets 2nd Wed. of the month at Nottingham Women's Centre, 30 Chaucer St. Nottingham at 8pm. Next meeting on 14th Aug - a discussion on lesbian money.

▽ **'Queer Goings On'** Weekend for gay and bisexual men at Castle Acre, Norfolk, Aug. 23-25th. Sliding scale of charges. Further details contact Philip on (01223) 511590.

▽ **Lesbian Musicians Group** meets 3rd Wednesday of month at Nottingham Women's Centre. For lesbian musicians and singers of all standards including beginners to meet, sing, play, jam and learn from each other. Lesbians and women questioning their sexuality welcome. 21st Aug, 8pm, 30 Chaucer St. Nott'm.

## Community Safety

The Nottingham Community Safety Working Party is carrying out a quick snapshot survey of lesbians, gays and bisexuals to find out about violence and harassment.

At MGM on Monday 2 September and Cello's Mon Friday 27 September there will be a VERY short questionnaire which they want as many people as possible to fill in. Please give a few minutes at either of these nights to answer four simple questions. This will be much appreciated and, hopefully, will be the start of doing something about this serious problem.

The Forum involves Notts County Council, Notts Police and representatives of local groups. You can find out more from Tim at the GAI Project (0115 947 6868).

## THE MENS SEXUAL HEALTH PROJECT

45 King Street Leicester LE1 6RN  
(0116) 254 1747

We offer information, counselling and support around HIV/Sexual Health, safer sex, relationships and sexuality. We provide free condoms, lubricant and dams on request.

We are a team of 3 Gay men:-  
Andy Griffiths - Project Co-ordinator  
Dylan Parris - Project Worker  
(Black men who have sex with men)

David Peet - Project Worker (Cottaging & cruising issues)

## OPENING TIMES

Monday 12 noon - 4pm  
Tuesday 12 noon - 4pm

## Wednesday The Centre is Women Only

Thursday 12 noon - 4pm  
Friday 12 noon - 4pm

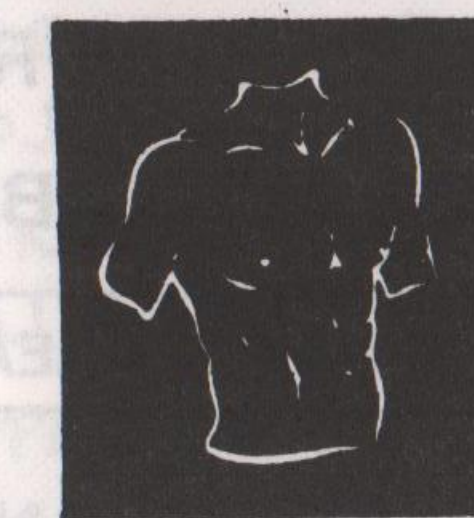
2nd Saturday of every month 12 noon - 3pm

ALL OUR SERVICES ARE FREE AND CONFIDENTIAL  
Available free to all men who have sex with men regardless of age, sexuality, race, religion, disability or antibody status.

## TRADE

is a group of gay and bisexual volunteers who want to do something about the HIV epidemic.

If you are interested in getting involved, why not give us a ring.



▽ TRADE

We are particularly keen to recruit volunteers from Black communities who are currently under-represented in our organisation.

## Get on the right tracks to The Funky Junction

## August Walks

**Pink Pathfinders:** Sunday 18, Rainster Rocks-Ballidon-Bradbourne & Netherton Hall, 6.5 miles, start Brassington Church, GR 230.543. Meet 10.45 am for 11.00 start. Info Bob or Brian 0115 967 7081

**Leicester Hiking Dykes:** 16/17/18 August Weekend in N. Yorks, staying in farmhouse; 1 September Norfolk, depart 8.30am from LGB Centre, all women welcome. Info Helen 0116 291 2128

**Gay Outdoor Club:** Thurs 8 Aug, Transpenine GOC, 'An Ilkley Mince'. Meet Ilkley. Pub afterwards. Sun 18 Aug, Transpenine GOC, Derbyshire. Details from John on 0113 273 7040.



The Lord Mayor of Leicester, Councillor Cudlipp Batty (pictured) launches the sponsored Walk for Life in Abbey Park in June, to raise money for Leicestershire Aids Support Services. A total of well over £4,000 was pledged to the HIV charity.

## LEICESTERSHIRE AIDS SUPPORT SERVICES



## CONCERNED ABOUT HIV/AIDS OR SEXUAL HEALTH?

We offer information and support about all aspects of HIV/AIDS, safer sex, HIV Testing, and general sexual health.

We also provide care and support, befriending, practical and financial help, and drop-in facilities for anyone in Leicestershire affected by HIV/AIDS.

Training around HIV/AIDS is also available for individuals, groups and organisations in Leicestershire.

**(0116) 255 9995**

**IN CONFIDENCE**

LASS is a Registered Charity. No. 1023914

**INFORMATION**  
around safer sex, HIV/AIDS and other sexually transmitted diseases

**ADVICE & SUPPORT**  
on all sexual health issues, physical and emotional

**TRAINING**  
around sexual health and sexuality, anti-homophobia etc.

**LEAFLETS & POSTERS**  
and other resources

**FREE CONDOMS**  
also water-based lubricants and dental dams

Available free and confidentially to everyone, regardless of age, sexuality, colour, race, religion, disability or HIV status.

**CONTACT:**  
Richard Marriott  
4 Rose Hill, Chesterfield  
S40 1LW Tel: (01246) 559431

**ASH**  
Community Action on Sexual Health

ASH is part of Peak Health, North Derbyshire Health Authority's Health Promotion Programme



## ▽ Briefly ...

▽ **Summer Camp** for gay and bisexual men, 17th-24th August, is a cheap outdoor holiday. Chill out on an organic farm in Pembrokeshire, South Wales, overlooking a picturesque tidal estuary. Sliding scale of charges from £45. Details from John 01734 598982 or Gerry 0181 675 0781.

▽ **First Out**, Lesbian, Gay and Bisexual Group for young people meets every Thursday, between 7.30pm and 9.30pm at 45 King St. Leicester, Phone Fee or Emma on 0116 254 7412 for details.

▽ **Leicester Gay Group** are holding a 'Soup and Bread' Charity supper, all proceeds to Parents Support Group, 13th September; and 'Coming Out & The Police', 1st October. Further details of both events from Chris on 01509 415272.

▽ **14th National Bisexual Conference**, 30th August-1st Sept. Kingston Upon Thames, London. Registration forms available from BM LBWG, London WC1N 3XX. Other dates in the Nottingham Bisexual diary are 10th August, Trip to Leicester LGB Centre, a discussion on Mixed Safer Sex, 8th August, 22nd August, The 1st Kilroy. Meetings start at 8pm and are held in room 3 at the International Community Centre 61b Mansfield Road, Nottingham.

## BECOME A 'FRIEND'

As everyone who uses (or tries to use) the Leicester Lesbian, Gay and bisexual Centre knows - it is not the best building in the world. There are a huge number of users and volunteers as well as paid workers, utilising a very cramped space. This is perhaps something everyone could live with but the biggest problem about 45 King St. is that it has a steep flight of stairs which are difficult or impossible for some people to negotiate. They desperately want to move so everyone who wants to, can use the Centre and of course, they need your help!

Most importantly The Centre needs your money - finding a building to suit its needs and making all the changes so that it can be used by everyone takes a lot of cash. With this in mind, the Centre have just set up a 'Friends of Leicester Lesbian, Gay and Bisexual Centre'.

There is a form to join the scheme in this month's Leicester and Loughborough copies of Outright! If anyone else outside Leicester would like to become a Friend of the Centre please contact Fee or Jill on 0116 254 7412 or write to 'Friends of Leicester LGB Centre', 45 King St. Leicester, LE1 6RN.

### SHEFFIELD WOMEN'S CULTURAL CLUB

Grinders Hill, off Paternoster Row, Sheffield - not far from Sheffield railway station.

**Tuesday, 6th August**, Lesbian Link Social Gathering, Saturday 10th August, Songwriter, Carmel O'Neill.

**Saturday, 17th August**, Vesna Panic, sings Yugoslavian Folk songs

**Tuesday, 20th August**, Lesbian Link Social evening, Saturday.

**24th to 26th August**, CLUB CLOSED FOR BANK HOLIDAY.

### OUTPOST!

A year's postal subscription to outright! for £5. Delivered to your door in a plain brown envelope! Cheque/postal order to outright! PO Box 4, West PDO, Nottingham NG7 2DJ.

## Woman to Woman

A new introduction service - Woman to Woman is described as the first introduction Agency for Gay professional women in the Midlands. A local gay businesswoman spotted a niche in a growing market and using her own experiences, coupled with a long period of in-depth market research, she has set about creating new social opportunities for Gay women. The service is aimed at those who consider themselves as 'gay' rather than 'lesbian' and who have a mature approach to their lifestyle. Research shows they are likely to have established career-paths, will probably be aged 30+, and prefer to keep their private lives very private. For further info. see display ad. in this edition.

## Portland

Insurance Services Ltd

20a Church Street, Coggleshall, Essex CO6 1PY

\*Pubs & Clubs \* Household \* Motor \* Commercial & Liability \* Personal Accident & Sickness\* \*Life & Pension \* Mortgage Protection \* Investments \*

FREE Mobile Phone with every quotation

For further information please call Phil Carvosso 01376 561 414 Fax 01376 563 535

PORTLAND - BROKER FOR PRIDE 96

An appointed representative of Eurosure Investment Services Ltd who are regulated by the Personal Investment Authority

## Banna Lesbian Housing Co-op

### SPACE AVAILABLE NOW

2 BED TERRACED HOUSE  
1 SPACE AVAILABLE FROM NOW!  
(MORE SPACE AVAILABLE SOON)

GARDEN • SECURE TENANCY • REASONABLE RENT

FOR MORE INFO: BANNA,  
c/o NOTTINGHAM WOMEN'S CENTRE,  
30 CHAUCER STREET, NOTTINGHAM, NG1 5LP.

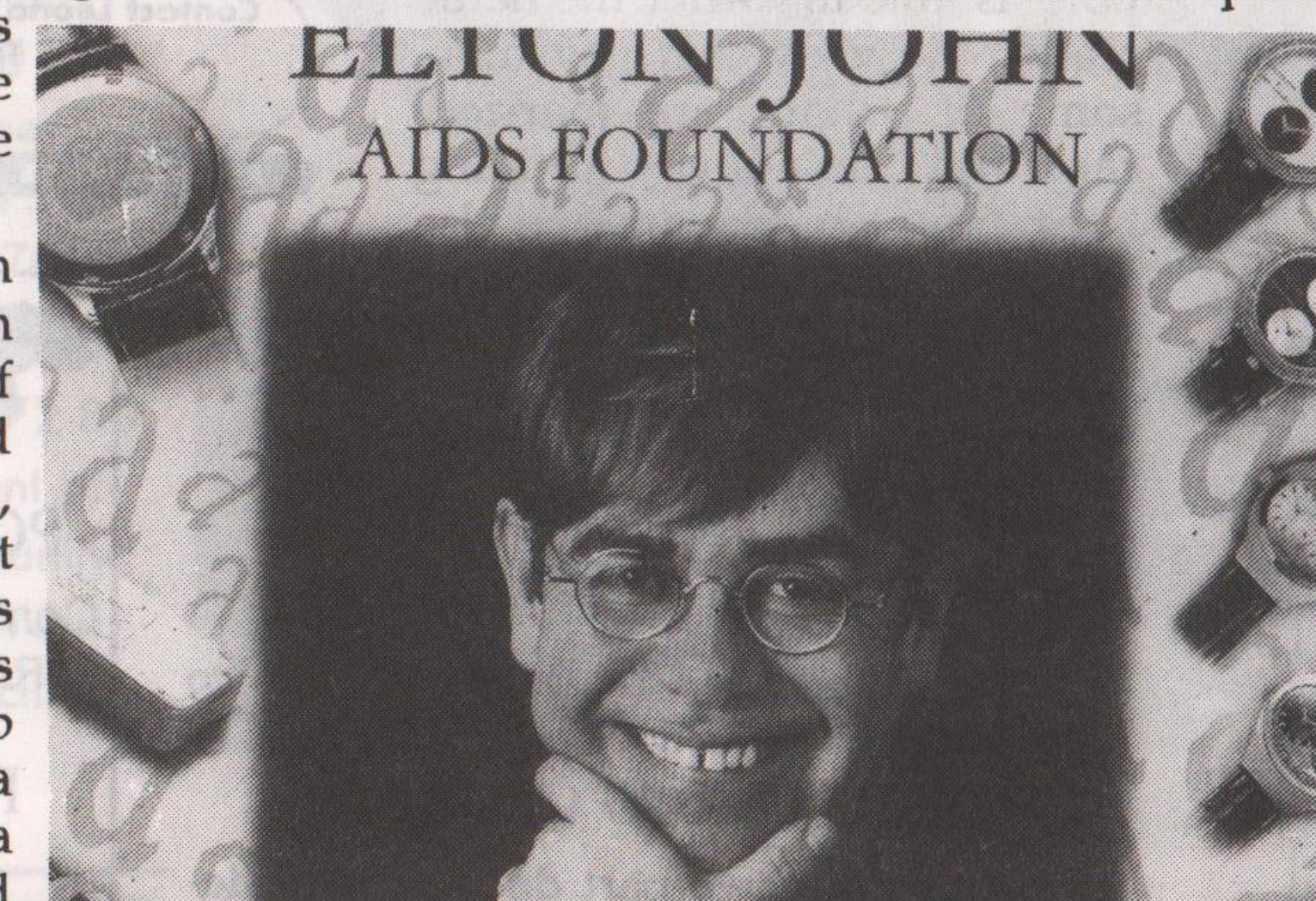
## REVIEW

## I'll thqweam & thqweam until I'm sick... 'Elton John : Tantrums & Tiaras', Central Television

The ITV networked warts 'n' all Elton John documentary was an enlightening and fascinating insight into private and public life of one of the world's top entertainers....an unbelievable ego trip exhibiting the most crass and embarrassing disgraceful showoff behaviour ever witnessed this side of a pouting, petulant five year old throwing a wobbler because it can't have its own way. It seems almost that they thought of the title and then decided to film around the theme.

With his track record of million selling singles and albums, Elton John's recent product is a glut of mundane, formulated and exceedingly bland million sellers, compared to his previous work, most of which have established themselves as classics. He says that he hates 'being regarded as a piece of soap powder' but ultimately he is a disposable commodity in a disposable society and should consider himself extremely fortunate to have a longer shelf life than most. His wealth and celebrity has produced a fawning compliance from airport and hotel staff the world over.

His therapist is very astute in what he says but really, faced with such juvenile behaviour, anyone could tell Elton John a few home truths without taking a phenomenal amount of cash for doing it - all you'd need would be to miss the number 49



bus on a Monday morning when it was pissing down with rain and you'd soon be onto directory enquiries for his number.

We observe the confusing flipside where momentarily we delve into the AIDS age. There is no doubt that Elton John is one of the minuscule amount of celebrities who using their status and media prominence to promote HIV/AIDS awareness that extends further than trendily wearing a red ribbon; for example profits from record sales going to the places the cash is needed and establishing the Elton John AIDS Foundation. If only there were a few more prepared to follow his example and put their commercial neck on the block and make more effort. Freddie Mercury could have done so much more in raising awareness, but that's yet another story.

There is no escaping the fact that Elton John and lyricist Bernie Taupin have created some of the most exciting, passionate and timeless pop music that has been performed by a glamorous and flamboyant stage creation. It is only sad that Reginald Dwight from Pinner has been overtaken by the Frankenstein's Monster that he created.

Simon Smalley

## MARSDEN'S BAR

13 Marsden Street, Chesterfield 01246 232618

\* Now open Sunday  
lunchtime with traditional  
Sunday lunch \*

**Male stripper every  
Wednesday**

**Cabaret most Sundays**

**Forthcoming acts -  
Buddy Brown, Dynamite,  
Encore, Chrissie du Cann**

**Monday-Thursday 8-11pm**

**Friday-Saturday 7-11pm**

**Happy hour 7-8pm  
Friday, Saturday, Sunday**

## CURZONS PART II DERBY

Info: 01332 363 739

**NOW TRIPLE CAPACITY  
OPEN 6 NIGHTS**

MON: AVAILABLE FOR PRIVATE HIRE

TUES: RETRO ...70's 80's and A LITTLE BIT  
OF 90's - ALSO DRINKS PROMOTIONS

WED: CABARET & DANCE

THURS: STUDENTS PLUS

FRI: DARE 2 DANCE with D.J. TONY GREEN

SAT: THE BEST D.I.R.T.Y....D.I.S.C.O. IN TOWN

SUN: PRACATAN...

NEW CHILL OUT AREA RESTAURANT  
4 BARS POOL ROOM

QUIET LOUNGE CRAZY STAFF  
23/25, CURZON ST, DERBY.  
CHEAP ADMISSION WITH FREDDIES STAMP



at the Meadow Club  
Meadow Lane Stadium  
Meadow Lane Nottingham

*Happy hour 8-9pm  
on Saturday 24th August  
and Friday 27th September*

don't miss ....

**Cellos on New Year's Eve**

tickets on sale from September in Mushroom Bookshop

**Infoline (0115) 961 7389**



## ▽ Briefly ...

▽ **Women's Femocamp** Denmark, On the windswept northern point of a small, sunny island south of Sealand is a beautiful preserved grassfield, the firm basis of the worlds oldest existing women's camp. Last two weeks of the camp are Sportsweek from 3rd-10th August, water and watersports, fun and games, improvised theatre. Last week of camp, 10th August-17th August, Say goodbye to summer, packing up the camp. Details from Foreningen Femo, Kvindehuset, Gothersgade, 37, 1123 Copenhagen K. Denmark, Tel. 33 91 15 57

▽ **The next meeting of the Nott'm Forum** for representatives of LGB groups & other interested people is on Tues 13 Aug at the Queen's Walk Community Centre, The Meadows, Nott'm at 7.30pm.

▽ **Leicester Gay Group** have Newcomers Social Evenings on Aug 13 & 27. More info from Chris 01509 415272

### LESBIAN HIDEAWAY



B & B, secluded country cottage near Brighton nestling below South Downs, overlooking woodland. Log fires, pool, relaxing weekends or longer breaks.

Phone for brochure (01273) 476032

QUALIFIED PSYCHODYNAMIC COUNSELLOR  
LONG OR SHORT-TERM WORK AVAILABLE



PHONE: BOSTON (01205) 366481

### DERBY AIDSLINE

Worried/confused about HIV/AIDS?

For confidential advice and information, phone FREE on Derby Aidline

0800 - 622738

Mon & Thur 7 - 9pm

Thurs 2 - 4pm

## COMMENDABLE!

Reporter, Matthew Brace wrote in 'The Independent', 29th July about a couple, one of whom was injured in the Atlanta bombing recently. Headed 'Briton injured in Atlanta nightmare' this couple, who happen to be gay and unremarkable, are thus seen reacting to an extraordinary event. The reader learns that for 12 years they had dreamed of taking this holiday, that one of them was married with children but had left his wife for Chris, his partner. Thus, this short report is able to offer the hettie reader the view that gay men, some of whom are married, can and do have fulfilling lives, but also, like anyone else can get caught up in tragedies. So if you read it too, why not commend the paper?

### Gay Connections

ENCOMPASSING LINCOLNSHIRE, CAMBRIDGESHIRE & SURROUNDING AREAS

The caring, professional introduction agency for Gay Men, Lesbians and Bisexuals.

Contact Leona Jackson for your free introduction package.  
Telephone / Fax: 01775 767521  
Mobile: 0378 628822

REGENCY HOUSE, 12 LONDON ROAD, SPALDING, LINCOLNSHIRE. PE11 2TA



**PantherSoft**  
Tel: (0115) 953 9767  
Mobile: 0378 363559

PC Support & Upgrade Service  
Computer Hardware at competitive prices  
RAM • Hard Drives • Modems • Scanners  
CD-ROM Drives • Sound Cards  
Pentium Systems from £749  
email: panther@innotts.co.uk

The introduction agency for Gay Professional Women.

Woman to woman

For full details, write to:  
"Woman to Woman",  
ISIS Introductions, P.O. Box 114,  
Beeston, Nottingham NG9 6BL.

## On The Box

All Channel 4, transmission times to be confirmed

### THE CELLULOID CLOSET

Ambitious two-part documentary described as 'essential viewing for film buffs of all persuasions' including contributions from Tom Hanks, Tony Curtis, Whoopi Goldberg & Quentin Crisp.

### CELLULOID ICONS (working title)

Exploring why famous figures are elevated to iconic status by gay men & lesbians, including features on Jodie Foster & River (bet he made that up) Phoenix.

### BLACK DIVAS

'A camp and celebratory film asking all the crucial questions' with contributions from David McAlmont & George Melly.

### CORONATION STREET

Described as 'the queen of all soaps', an in depth look at why Coro is so big with us.

## CAMPIONS SOLICITORS

### ACCIDENT?

### FREE LEGAL ADVICE

### NO WIN - NO FEE

45 - 47 MANSFIELD RD

NOTTINGHAM NG1 3FH

TEL: (0115) 947 6373

### FREE CAR PARKING

NEAR VICTORIA CENTRE

### Welcome Abroad Travel

Due to expansion and increased demand require an additional  
**Travel Consultant**

Experience required.

Tel: Neil or Barry 0116 233 6655

### HAVE A PROBLEM?

WOULD TALKING ABOUT IT HELP?

Peter Scotney, Diploma Counsellor in Training offers "FREE"

One-to-One COUNSELLING

Tel: 01332 755 098

### Holistic Massage

by ITEC qualified Masseur  
Secure, Comfortable,  
Relaxing,

For more details:

Ring Tim

(0115) 948 0975

# The Funky Junction

## 0990 134 345

## ALL CALLS AT STANDARD RATES

The Funky Junction is *the* new voice message and fax-back service for our community. It brings you personal contacts and a range of other advertisements.

### Ten point advantage checklist:

- ▽ all calls at standard phone rates - wave goodbye to 0891 charges.
- ▽ because phone calls are cheap, advertisers get more replies.
- ▽ advertisers retrieve messages at standard phone rates too - some voice-mail systems offer 0800 freephone advertising but charge 0891 rates to hear replies and so the more replies you get, the costlier it becomes!
- ▽ unique national Fax-Back service in addition to our voice message service.
- ▽ low cost advertising charges - only £5 for one month's voice message or £5 for 3 months' Fax-Back.
- ▽ voice mail advertisers can change their advert at any time during the month.
- ▽ advertisers write their own 24 word 'taster' advert for inclusion in outright!
- ▽ replies to voice mail messages can be made by phone or post - other voice-mail systems won't allow postal replies because they want the income from 0891 phone calls.
- ▽ the Funky Junction is more than a dating service - it can include adverts and messages of all descriptions.
- ▽ 24 hour service, 365 days a year.

### Other Funky Junction services

- ▽ unlike other voice mail systems the Funky Junction can be used to advertise a wide range of services:
- ▽ accommodation
- ▽ employment wanted and offered
- ▽ health issues
- ▽ community news
- ▽ leisure and pleasure
- ▽ The Funky Junction is an extremely flexible and friendly voice message centre. You are only limited by the power of your imagination in the ways you can use the service.

### How to place an advertisement

Advertising at the Funky Junction is simple. Just complete the form on page 10 with a 24 word 'taster' advert and send with your cheque/postal order for £5 payable to outright! You will receive from us an exclusive voice message number and unique password. This guarantees privacy and confidentiality.

You ring the Funky Junction using a touch-tone phone. When you hear the Funky Junction announcement, press the hash key (# or #) you will hear options for recording your advert, listening to it, deleting it, re-recording it.

**Handy tip!** You can record an advert up to two minutes in length. A good idea is to write your message before ringing the Funky Junction. Remember the key points you want to make. Take your time - give an Oscar winning performance!

## 0990 134 345

See back page of this supplement for further information



## classifieds

**HOW TO REPLY.** Seal each reply in a separate envelope. Write the number of the Box you are replying to in the top right hand corner of each envelope. Place them in a larger envelope. Enclose two loose first class stamps for each reply: replies without stamps are *not* forwarded. Address the outer envelope to Outright, stamp and post to: PO Box 4, West PDO, Nottingham NG7 2DJ.

### men's personal

DERBYS: 40, 5'11", slim, short, dark hair, cleanshaven wltm goodlooking 18-25 biker. Likes leather for rides, rel, poss 121 & USA/Caribbean holiday. Box 523

LEICS: Guy 29 new to area, slim, 5'11", extremely passive wltm dominant muscular fit guy 21-40 for hours of fun & friendship. ALAWP. Box 524

GOODLOOKING 27, hairy, fit, v/w/e seeks guys any age into everything inc photo's, videos, leather, rubber, boots etc. Horny reply req, photo app. Box 525

NOTT'M guy, med build, s/acting seeks guys 18-35, 5'2"-6'4", smooth/hairy, slim-med build for f'ship & fun, Varied interests. ALAWshirtlessP (ret) & phone. Box 526

### NOTTINGHAM:

Guy 42 seeks young (18+) uninhibited guys into nudity, DIY, massage. Daytime pref. Own place/car. Come on, have some relaxed no ties fun this summer.

Photo/phone please.  
**Box 451**

TALL dark handsome guy 25, 6', graduate, horny, fit, romantic type seeks smooth, slim/skinny tall sexy guy 18-25 for fun/121. Photo app. Box 527

LEICS/anywhere: 50/1.73/45 VGSOH, c/shaven, s/acting, n/scene, n/smoker active seeks discreet romantic guy for daytime fun. Age/colour unimportant. Inexperienced welcome. Can accom. ALA. Box 528

MATURE prof gay guy seeks guy 30-45 ish, v.w/e, med build, active. Mediocre lifestyle. GSOH. S/acting for f'ship/rel. Can accom. ALAWP. Phone no. Box 529

TALL slim guy 27, w/e, goatee seeks athletic w/e guy 18-30 for hot times. Horny photo (ret) & phone. Notts/Derby, no time wasters! Box 530

SINGLE gay male 44 med build, 6' from Notts seeks sim 18-49 for poss 121. My music 60's-70's, railway mags, videos, collecting stamps, Carry On films, transport videos. Box 531

LEICS: Gay guy into collecting gay videos has large selection, interested in corresponding with like minded guys for swaps etc. Your list gets mine. Box 532

NOTT'M: Bi 37 seeks single bi or couples 18-50 for randy horny sex. Can accom. Into cycling, cooking, vegetarian, n/smoker. Box 533

### NOTTINGHAM:

Two guys, busy working seek young honest guy for two afternoons/evenings domestic work/gardening. Uninhibited & domesticated pref. Write with phone no. if poss.  
**Box 460**

NORTHANTS: Goodlooking guy 38, athletic, good butt seeks active guy/s. Anything goes. Get in there. Photo please. Can travel anywhere. ALA. Box 534

LEICS: Slim, gym-fit very new 56, n/smoker, loyal, loving, varied interests seeks active s/acting 26-40 slim-medium n/scene guy for honest f'ship/121. ALAWP. Box 535

NOTTS/Mids: Gen guy mid 20's inexperienced but randy seeks tall guy 18-30 for 121. ALAWP. Can travel/accom. Box 536

RETIRED gay couple seek sim for home visits etc. Any age 18+. ALA. Box 537

GAY couple 33/38 seek single guys for fun times. No strings. Leics area. ALAWP. Box 538

MED build 22 likes cosy nights in wltm that special person in my life 25-40. ALAWP. Box 539

MANSFIELD: 55 gay/TV y/o 5'10" blue eyes, grey ponytail seeks friends 30+. Me v.poor unemployed, you GSOH. ALA. Box 540

NOTTS/Midlands: 36, 5'10", slim, fun to be with, down to Earth seeks unconfused younger guy 18+ for 121. Genuine replies only. Can travel. ALAWP. Box 541

E.MIDS: Safe, sane, experienced guy 50's offers graduated CP & deep tongue explorations to eager guys 23-40. Box 542

DERBY: Awfully nice 42 y/o would like a younger (18+) man to look up to him. Are you he? Box 543

MATURE w/e hippy type req for safe fun. Me 28, openminded ready to go. Send details to Box 544

NOTTS: Grandad seeks grandson, with specialised interests. ALAWP+address. Can accom if req. Box 545

DERBY: Attractive tall, slim 36, v. horny seeks masculine guy for fun & f'ship/121. Asian & hairy guys esp welcome. Photo please. Box 546

SHEFFIELD: 24, 5'10", fat, balding seeks gen 21-32, looks unimportant but GSOH is. F'ship & 121 monogamous rel. Box 547

DERBY: Frolicsome schoolmaster type 54 seeks local boyish type special friends 18-28. Enjoy relaxed favourable amusement/desirable excitement. Wonderful opportunity for shy tentative beginners. Box 548

NOTT'M: Guy 31, 5'10", med build, enjoys fitness nights, in/out food/drink, conversation seeks sim singles/couples for fun frolics & f'ship! Box 549

SHEFFIELD/anywhere: Guy 37, friendly, intelligent, attractive, 5'10", hairy, nude cleaner/waiter seeks guys 40+ to hire me. Will travel. Box 550

### NOTTS/DERBY/LEICS:

Attractive naturist guy 38 would like to start group for naturist guys. Meetings, outings, holidays, fun times. Genuine ALA. Phone helps.  
**Box 551**

ARE you the man in my dreams. Lonely male 28 seeks guys for f'ship & poss rel. V. honest, caring & loyal. Box 552

TWO 22 year olds totally up for it, both single live in Nott'm city centre. Interested? ALAWP. 18-28. ASAP. Box 553

FIFTY but still nifty! Lively intelligent fun guy seeks kindred spirit with bright eye (& bushy tail) 20-50. ALAWP. Box 554

INTERESTED erotica? Two guys 40/25, English/Mediterranean who are wltm others for mutual sharing, poss swaps/exchanges. Box 555

NOTT'M/Midlands: Guy 40, s/acting seeks randy handsome guys 18-35 for fun. Any colour/nationality welcome. Detailed letter + photo assures quick reply. Box 556

NOTTS: 25, tall, dark hair, average looks, v.s/acting seeks sim for f'ship, fun, hopefully more. Personality more important than looks. Box 557

LINCS/Notts: 49 y/o passionate, loving, reliable wltm 35-50 for 121. N/scene, n/smoking. ALAWP. Box 558

GAY guy wltm sim for laughs, eating, drinking. Let's get together & put the world to rights. Photo app. Any age/area. Box 559

DERBY/Notts/anywhere: Guy 29, slim, attractive seeks sim to have fun etc. Enjoy scene, varied interests. Go on, drop me a line. Box 560

NOTT'M: Tall, slim 50, loyal, caring, s/acting & looking seeks someone special 18-55 for f'ship/rel. Box 561

NOTT'M: Horny hairy hunk, mid 30's seeks rampant sex & cuddles. V. affectionate & versatile, intelligent with it! Willing to be dominated. Box 562

SOUTH LINCS: Publican, heavy build, short brown hair, GSOH wltm someone slim to medium build, 18-25 for gen 121. ALAWP, promise. Box 563

GAY male 31, slim, smooth, dark hair, brown eyes, c/shaven seeks n/scene masculine male for fun, f'ship, hopefully caring rel. Sheffield/anywhere. Box 564

LEICS/Notts: Lively couple 30's/50's enjoy safe fun with other guys or couples. ALA. Box 565

LEICS guy 27, warm heart, cold bed seeks guys for cinema, clubbing & wild fun times for f'ship, poss 121. Box 566

NOTT'M prisoner seeks gen 18+ pen pal (February next 121) to boost flagging morale. Visits poss. Own house etc. ALAWP. Please write soon (Roy). Box 567

LEICS: Male 40's, fed up with scene looking for friends/penfriends 18-38. Interests walking, youth hostelling, pubs, swimming. Any colour welcome. Box 568

NOTT'M guy 38, attractive, tall, w/e seeks photographer to take photos of me in & out of sportswear, briefs etc. Phone ALA. Box 569

50's, slim, young outlook, c/shaven, n/smoker sincere enjoys arts, music, countryside wltm any nationality 21-45 f'ship maybe more. Photo app. E. Mids. Box 570

NOTT'M guy 45, videos, shorts, indoor naturism seeks similar 35-45 frolics, f'ship. Frank letter, photo, ph. number ensures quick reply. Can accom. Box 571

LEICS: Goodlooking, smooth, slim 20 likes pop/disco music, cinema, hot romantic nights in & fun nights out seeks sim. ALAWP. Box 572

E.MIDS: 30's, slim, athletic, horny, w/e seeks daytime safe fun. You 20-40. Can travel/accom. Phone no please. ALA. Box 573

DERBY/Nott'm/Sheffield: Tired of empty promises? Looking for honest 121? Caring guy, young 35 would like to hear from you. Photo app. Box 574

LEEDS lad 36, tached & fit skinhead looking for mates in Notts/Yorks/anywhere. Clones/skins/uniformed/boots & braces/jeans. ALAWP. Do it! Box 575

DERBY area: Friendly mature guy offers erotic satisfying massage to uninhibited younger (18+) bi's & gays. My place anytime. Box 576

D.I.Y. Nott'm guy seeks goodlooking postmen/policemen in snug fitting uniform trousers/short sleeved shirt for f'ship/mutual relief. Box 577

DERBY: Passive guy 40's wltm younger (18+) dominant Asian/White man who will take control long term. ALAWP. Can accom. Please be frank with reply. Box 578

NOTTS: Any gay sportsmen out there? 25 y/o seeks tennis/badminton partners. Also any guys who work out at Portland Leisure Centre. Box 579

FIT, intelligent goodlooking 27 y/o Nott'm man, 6' & s/acting enjoys arts, sport & drinking. Think we'll have something in common? Box 580

NORTHANTS: Chubby TV, 47, seeks active guys 35+ for fun/f'ship. Travel/accom anywhere. ALA with address. Photo app, not essential. Early meetings desired. Box 581

DERBY/Nott'm: Passive 35 y/o into active guys 18-40 likes leather, rubber, skins, lorry drivers photo preferred not essential. Box 582

DERBYS: Male, 30, seeks friends 30-50. Homesty essential. ALAWP. Box 583

## HELPLINES

**CHESTERFIELD AREA**  
**LESBIAN LINE**, Tue 7.30-9.30pm.  
01246-559431.

**CHESTERFIELD HAND**, Thurs 1-3pm, Sun 7-9pm. 01246-550550  
**COVENTRY FRIEND**, Mon, Wed, Fri, 7.30-9.30pm 01203-714199  
**COVENTRY LESBIAN LINE** Wed, 7.30-9.30pm. 01203-717166  
**COVENTRY MESMEN**, 01203 224090.

**DERBY BODY POSITIVE**, Tue 10.30am-1.30pm, Thur 11.30am-4pm, 01332-292129.

**DERBY FRIEND**, Wed, 7-9.45 pm. 01332-349333.

**DERBY LESBIAN LINE**, Wed, 7-9pm. 01332-41411.

**DERBY AIDSLINE**, Mon & Thur, 7-9pm, & Thur, 2-4pm. 0800 622738.

**GRIMSBY/ SCUNTHORPE**  
**AIDSLINE**, 01724 276660

**GRIMSBY & DISTRICT GAY**  
**HELPLINE**, Tue & Thur, 7-9pm.  
01472-251818.

**LEICESTER LESBIAN/**  
**GAYLINE**, Mon-Fri, 7.30-10.30pm.  
0116-255-0667.

**LEICESTERSHIRE AIDS**  
**SUPPORT SERVICES**, Mon-Fri, 9.30am-5pm. 0116-255-9995.

**LESBIAN & GAY CHRISTIAN**  
**HELPLINE**, Wed & Sun 7-10pm,  
0171-739-8134.

**LINCOLNSHIRE AIDS**  
**VOLUNTARY GROUP**, Mon, Wed, Fri, 9am-9pm, & Tues, Thur, 9am-5.30pm. 01522-513999

**LINCOLNSHIRE LESBIAN &**  
**GAY SWITCHBOARD**, Thur & Sun,  
7-10pm. 01522-535553.

**MANSFIELD SEXUAL**  
**HEALTH & AIDS HELPLINE**, 01623 642814

**MANSFIELD/ASHFIELD**  
**POSITIVE SUPPORT**, 01623-26254

**NATIONAL BISEXUAL**  
**PHONELINE**, Tue & Wed, 7.30-9.30 pm. 0181-569-7500

**NORTH STAFFS LESBIAN &**  
**GAY SWITCHBOARD**, Mon, Wed, Fri 8-10pm, Sun 1-3pm, 01782-266998  
**NORTHANTS GAYLINE**, Tue 6.30-9.30pm, 01604-35975

**NORTHANTS LESBIAN LINE**, Wed 7-9.30pm 01604-250887

**NOTTINGHAM LESBIAN &**  
**GAY SWITCHBOARD**, Mon-Fri, 7-10pm. 0115-941-1454

**NOTTINGHAM LESBIAN**  
**LINE**, Mon & Wed, 7-9pm. 0115-941-0652

**NOTTINGHAM FRIEND**, Tue 7.30-9.30pm (women), Thur, 7-9.30 pm (les/gay/bi), 0115-947-4717

**NOTTINGHAM UNIVERSITY**  
**LESBIAN & GAYLINE**, termtime Mon, 8-10pm. 0115-951-4999, internal 4999

**PETERBOROUGH FRIEND**, Tue & Thur, 7.30-9.30pm, 01733 61499. Answerphone other times.

**SCUNTHORPE GAY MEN &**  
**WOMEN**, Wed & Fri, 7-9pm, 01724 271661

**S YORKS CONNECTIONS**, Thurs 7-10pm & Sun 3-8pm, 0122 6730703

**SHEFFIELD AIDS LINE**, Mon-Thur, 7-10pm, 0800-844334

**SHEFFIELD GAYPHONE**, Mon-Wed, 7.30-9.30pm, 0114-258-8199

**WELLINGBORO' GAYLINE**  
Thur, 6.30-9.30pm, 01933-223591

### mixed personal

MARRIED bi-couple M41/F40 seek bi/gay females/males/couples for f'ship, fun, more? Travel/accom, anywhere. All welcome. Let's get together. Box 158

BISEXUAL male 38, healthy, slim, non scene seeks bisexual female 18-60 for fun & f'ship. Anywhere. Colour unimportant. ALA. Box 159

NOTTS bi guy, muscular, slim, good-looking seeks openminded bi female or M/F TS for fun & f'ship. Can travel/accom. Any colour. ALA. Box 160

BENIDORM, 10-17 Aug. Two gay male friends looking to meet up with lesbians or gays during their holiday. Box 161

### women's personal

LINCS: Attractive horny female with nice body wltm sim for fun, f'ship or...? Are you game? ALA. Box 226

DERBY dyke seeks sporty fem 20-30 for adventurous afternoons & passionate nights. Photo app. Box 227

BI female 20 seeks other females. Fun nights out. Enjoy pictures & videos and poss 121. Box 228

S.YORKS: Warm, kind, independent, slim, modern, 52, fairly attractive enjoys laughter, music, outings, countryside, animals offers f'ship, romance? Any area/nationality. Box 229

OUTGOING prof 24, 5'9", thin, artistic, new to scene, GSOH, boyish female seeks good woman 24+ for f'ship/rel. Nott'm. Box 230

TWO girls from Nott'm looking for friends, poss rels. Any area. Into pubs, clubs & having a good time. Photo please. ALA. Box 231

GOODLOOKING fem gay woman 33 seeks honest, gen gay woman for lasting f'ship/rel. Photo if poss. Lincs. Box 232

LESBIAN 32 GSOH would like penpals & contacts for f'ship initially. Any age or interests. Any area. Box 233

SHEFFIELD: Rampant dyke seeks playmates for shag til you drop fun & games. Commitment & devotion for the night only, not for life. Box 234

I'VE got no Ferrari, swimming pool or mansion but I'm honest, reliable & got a lot of love to give. Single & 50. Box 235

E.MIDS: Early 40's, deep thinker, sensual, passionate, GSOH seeks likeminded woman 35-45 enjoying music, countryside, good conversation over a bottle of wine, eating in/out. Box 236

GAY 40-ish non smoker, fairly attractive, intelligent, romantic, easygoing, reliable enjoys good things in life seeks sim with GSOH for rel in Derbys area. ALA. Box 237

GAY female (ties), 30's, androgynous, medium plus, looking for daytime fun 121, casual night in/club. Age, size, national- unimportant. Mansfield/Dukeries area please. Box 238

SHEFFIELD: Gay woman very femme, slim, blonde TS, 32, into keep fit seeks other women for f'ship & interests. ALA. Box 239

## BARRIE WARD & JULIAN GRIFFITHS

### SOLICITORS

5, Clarendon Street,  
Nottingham, NG1 5HS.  
Telephone (0115) 941 2622  
After hours (0115) 960 2324

NORTHANTS: Late 30's, non scene, interested in complimentary therapies, spiritual healer, enjoys cinema, theatre, socialising, country drives seeks butch sim interests for f'ship/poss rel. Box 240

LEICS: Lesbian, early 30's seeks new friends. I'm interested in walking, travel, reading, dancing, theatre & much more. Box 241

SINGLE Derbys female 30 with GSOH seeks female with intelligent caring affectionate nature, pref 30-40 for f'ship, poss more. Box 242

N.WEST lesbian (short fat poet) looking for penfriends. Is there anyone out there at all? Box 243

SINGLE gay female, large & generous likes animals & social life. Let's have some fun together. ALA. Box 244

SHEFFIELD: Gay female 22, GSOH, love to travel! Like to meet interesting, positive friends with GSOH!!! Pref butch!! Box 245

SHEFFIELD: Gay female 21 into travel, art, photography, scene seeks butch boyish dyke 121 or f'ship. ALA. Box 246

**Slim attractive gay woman  
31 looking for feminine or  
butch partner in Derby or  
Notts area for sincere lasting  
relationship.  
Box 247**

LONELY gay black female 31 wltm sim for f'ship, poss more. Loves music, keep fit & badminton. V.honest & sincere. Sheffield/surrounding areas. Box 248

NOTTS: Solvent gay female 21 wltm 20-30 for f'ship, maybe more. Me-attractive, femme. You-whoever you want to be. ALA. Box 249

INEXPERIENCED, unattached blonde, slim, feminine, prof 40's, totally n/scene seeks similar feminine woman. Box 250

**Exotic passion strawberry  
(20) searches cream, boyish  
with cuddly outcomes for  
whatever comes naturally.  
20-26. Leicester.  
Box 251**

### accomodation

LEICS: Room available with use of facilities & garden for woman only non smoker, vegetarian pref. £45 pw inc all bills exc phone. 0116 267 7492

LONG EATON: Large room in gay house £45 pw inc, exc phone. M1 J25 easy Nott'm, Derby etc. Working persons only. Male or female. Cat. 0115 946 2572

NOTT'M/Mansfield border: Double room in lovely end cottage in quiet village. All modern luxuries to share with young owner. £50 pw. Steve 01623 722744

SHEFFIELD/Dore: Two large rooms available in beautiful detached house with gardens. Share with lesbian. Must like animals. £30 pw + bills. 0114 236 7608

EASTWOOD, Notts: Person required to share home in quiet area. Male or female. Must be employed, clean & tidy. £35 pw. 01773 711395

SHEFFIELD, Eccleshall: Furnished room, suit lesbian. C/H, large garden, washer, two cats. £40 pw inc bills exc phone. 0114 267 8096

CHESTERFIELD: Free accom in very comfortable all mod cons flat for male gay student 18-20 with fit/active prof guy. Andrew 01246 454962

NOTT'M, West Bridgford: Furnished bedsit to let in tidy gay house share. £35 pw inc of gas & electricity. Alan 0115 982 1526 evenings.

CHESTERFIELD: Room available in two bedroomed fully furnished house. Must like animals. £45 pw exc phone. 01246 237263

NOTT'M, Forest Fields: Lesbian wanted to share woman only space with me & cat. Two bedroomed friendly house, sunny garden. £162.50 pcm exc deposit. 0115 979 2657

SHEFFIELD, Hillsborough: Gay house-share. One room, single, furnished. Students. Working persons. B&B £10.00. Bills £38.00 pw. Bond £8.00. No DSS. 0114 285 5179

LEICS: Room to let Roydene Cres. Must be working. £40 pw + bills. Fully furnished, all mod cons. Box 76/A12

NOTT'M, city centre: Room available for working male. £35 pw to share with gay guy. All mod cons. Meals also available. 0115 941 8510

SHEFFIELD, Walkley: Room to let in pleasant house, sharing with owner. Suit working person/mature. N/smoking. £150 pcm. 0114 234 8321

NOTT'M, Beeston: Quiet yet 2 mins from shops, beautiful bright terraced house. Woman only share with female owner. £170 pcm + bills. No pets. 0115 922 0161

LEICS: Room available in shared house with owner. GCH, washer. £35 pw inc exc phone. Meals available. Any nationality welcome. 0116 243 3984

NOTT'M, Radford: Friendly, responsible n/smoking 5th person wanted for shared house. £125 pcm. We like books, computers, live music. 0115 924 9394

NOTT'M, Sherwood: Room available for working person or mature student. £35 pw to share with owner. Garden, GCH, washer. Woman preferred. 0115 960 6561

LOUGHBOROUGH: Nice room available for lesbian in interesting house with owner. Dog, cat, Rayburn. £140 pcm inc, exc phone. 01509 217854

### messages

ANTIQUES Roadshow, Chatsworth, 27 June. Me white T-shirt & shorts. You tall, slim. Got eye contact but didn't speak. Let's talk about books together? Box 76/M1

INDIAN Squaw, give me a chance. Sexy Scorpio. Box 76/M2

JONNY F. - Thanks for six great weeks. Still always on my mind, forever in my heart. I'll be here if you need me. Gary.

ALLDERS, Nott'm, Sat 22 June, 3.15pm. We talked waiting outside swimwear changing rooms. Me blond, white shirt. You gorgeous. Please get in touch. Box 76/M4

AMATEUR DJ requires mentor. Lincs area. Box 76/M5

SEE YOU at the Funky Junction...the hottest spot in town!

SPOTTED! Young boyish cute dyke wearing Converse trainers in Mushroom 4.7.96 (noon). Me: Femme talking with older gay man. Would lurve to do something with you. Please write to Box 76/M6

**HOW TO PLACE AN AD.** Complete the form below. Write clearly please, and punctuate! Keep ads short & sweet: **max 24 words.** We may refuse or amend ads. One free ad per issue, must arrive by 23 Aug.. Enhance your ad in display for £4. Commercial advertisers write or phone for rates.



## How to listen to replies to your advert

1. Ring the Funky Junction on 0900 134 345 using a touch-tone phone, then enter your voice message number.
2. You will be asked to enter your password after which you will be told how many replies are waiting for you.
3. Listen to the replies. You will have the option to replay or delete messages you have listened to.

**Handy tip!** Have a pen and paper handy to make notes.

## How to reply to a Funky Junction advert

This is a piece of cake! Ring the Funky Junction on 0900 134 345 and follow the recorded instructions. These are briefly:

1. Choose the voice message number of interest to you. You'll find this at the end of each 'taster' advert in the Funky Junction supplement.
2. Ring the Funky Junction using a touch-tone phone. When prompted enter the voice message number you have chosen and listen to the advert.
3. Record a reply (maximum 2 minutes), delete it or re-record it, or return to the main voice message menu where you can choose another message to listen to and leave another reply.

**Handy tip!** Two minutes can be a hell of a long time so - have a practice and don't rush or muffle your message. After all, first impressions count.

## Another first for the Funky Junction!

The Funky Junction enables advertisers to place an extensive description - 250 words of your choice. Your fax stays on-line for three months for only £5.

## How to place an advert using the Funky Junction Fax - Back Service

1. Send your description (max 250 words) to **outright!** enclosing a cheque/postal order for £5 payable to outright! Also include a maximum 24 word 'taster' advert using the form below which will be included in the Funky Junction supplement with your fax document number.

**Handy tip!** Please write clearly or print your advertisement. We can't decipher scrawl!

## How to receive a Funky Junction Fax - Back

1. Call the Funky Junction on 0900 134 345 from the handset of your fax machine. Remember the handset must be switched to tone.
2. When prompted, press 1 on the keypad of your handset. If you wish to receive an index of all Fax-Back advertisers (which will include the 24 word 'tasters') press 1 again to select the index document. Wait to hear a fax tone and press \* on your fax machine. Once you have the index you can call the system again to choose the document or series of documents you want to receive. This is done by following the simple instructions you will hear.

## Fax-Back - a nationwide service

Adverts are described in an index which anyone in the country can retrieve. So the Fax-Back service is not dependent on you having a copy of outright! because you can retrieve the 'taster' adverts on your fax machine any time of the day or night. All you need to remember is the Funky Junction number 0900 134 345. Remember you can receive faxes at thousands of High Street shops.

## Special Offer - your first month FREE!

All advertisers can have two months' voice messages for the price of one month - £5.00. Your advert will appear in September and October.

# 0990 134 345

## Touch - tone phones

You must use a touch tone phone for the Funky Junction. If you are not sure whether your's is a touch-tone phone, dial 100 and ask the Operator for advice. Remember, all public telephones are touch-tone. Prompts on the Funky Junction ask you to press the hash (# or #) key from time to time. This key is always positioned bottom right next to zero on the keypad.

## Try it...you'll like it!

▽ You can sample this exciting service by phoning 0990 134 345 and following the user friendly instructions. Below are sample lines.....so pick up the phone, dial 0990 134 345..... and have fun!  
**You can get it all at The Funky Junction!**

▽ Exotic passion strawberry (20) searches cream, boyish with cuddly outcomes for whatever comes naturally. 20-26. Leicester. **Voice message 1001**

▽ Erasure 12" mega-rarities for sale. **Voice message 2001**

▽ Gay Men's health issues - Information and advice from The GAI Project. **Voice message 3001**

▽ Stonewall Breaks. Monthly weekends away for gay/bi men. **Voice message 4001**

▽ The Kings Head, Emery Lane, Boston, Lincs. Gay-run pub open all day, every day. **Voice message 5001**

The Funky Junction can be sampled from 5th August 1996. The service goes fully live from 1st September. For inclusion in the September Funky Junction supplement we must receive your advert by 22nd August.

Send your 24 word 'taster' advert & cheque/postal order to **Outright!**, PO Box 4, West PDO, Nottingham NG7 2DJ

## The Funky Junction

Complete the form and return to Outright,  
PO Box 4, West PDO, Nottingham, NG7 2DJ.


Please tick category: Mens ..... Womens ..... Mixed ..... Accom .....  
Employment ..... Health Issues ..... Community News ..... Leisure .....  
Fax Back ..... (include cheque / PO for £5)  
Voicemail ..... (include cheque / PO for £5)

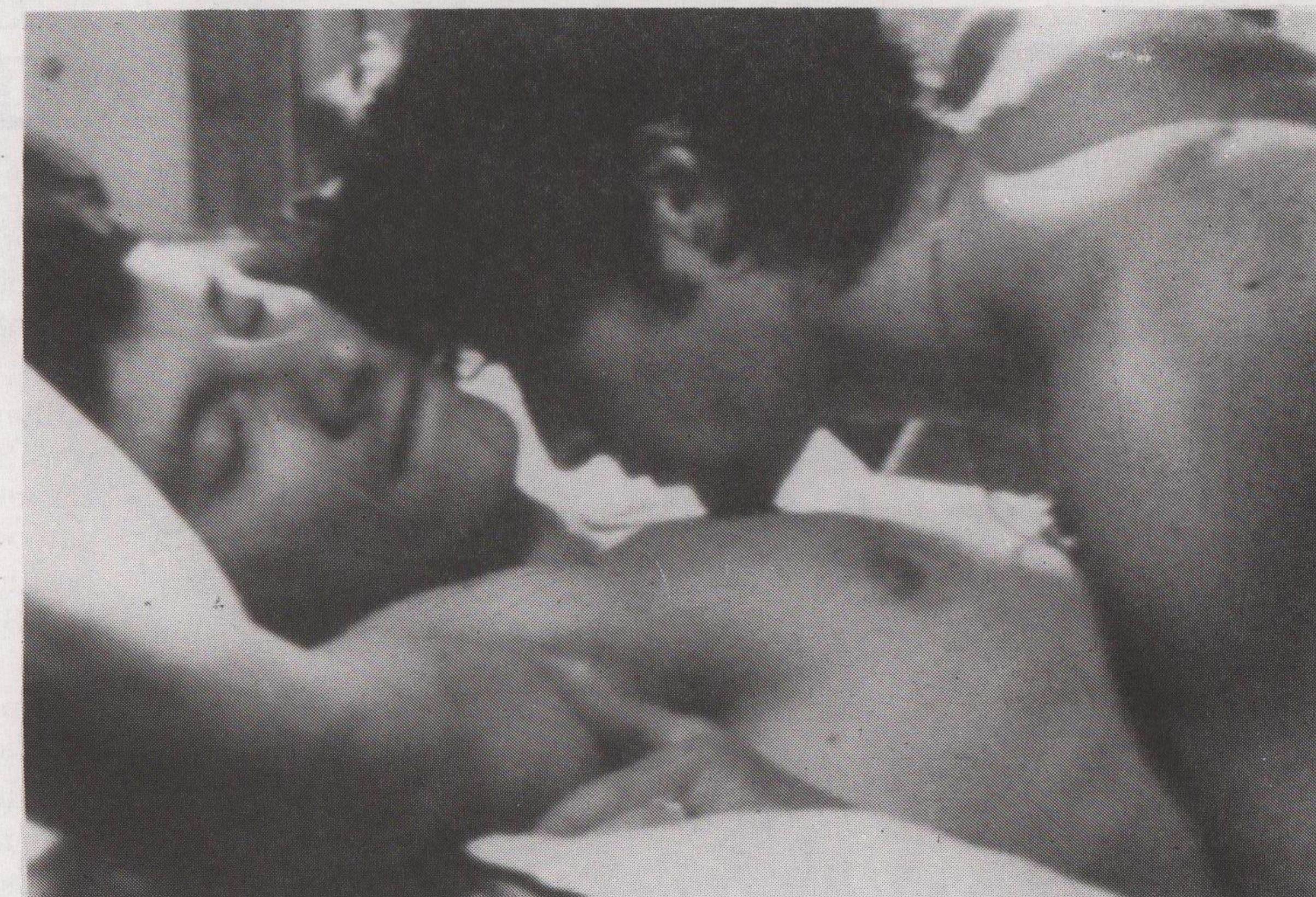
Name.....  
Address.....  
Postcode.....  
Signature.....

## ▽ Briefly ...

▽ Northampton Gayline, a social group for gay men meets Tues 7-9.30 pm whilst Northants Lesbian Line meets Weds 7-9.30 pm, both at the Northants Lesbian & Gay Resource Centre, 69 Derngate, Northampton. Tel 01604 28986

▽ The Lesbian Breakfast, last Sunday of each month 11am-2pm, at the Lesbian Centre, Nott'm Women's Centre, 30 Chaucer St. Food, drink, music, papers. Children welcome. Next breakfast 25 Aug. Info from Jane 0115 960 6270

▽ Nottingham's Out House Project continue to discuss the premises at 72-80 Lower Parliament St. for development of the Lesbian, Gay & Bisexual Community Centre. They now have their own Word Wide Web site at <http://www.geocities.com/WestHollywood/1259/outhouse.html>



anvil

**anvil press**  
print & design

- ★ Leaflets/Flyers
- ★ Brochures
- ★ Newsletters
- ★ Business Stationery
- ★ Posters
- ★ Booklets
- ★ Stickers
- ★ Carbonless
- ★ Envelopes
- ★ Full Colour

119 Abbey Street, Derby  
Tel: 01332 298213

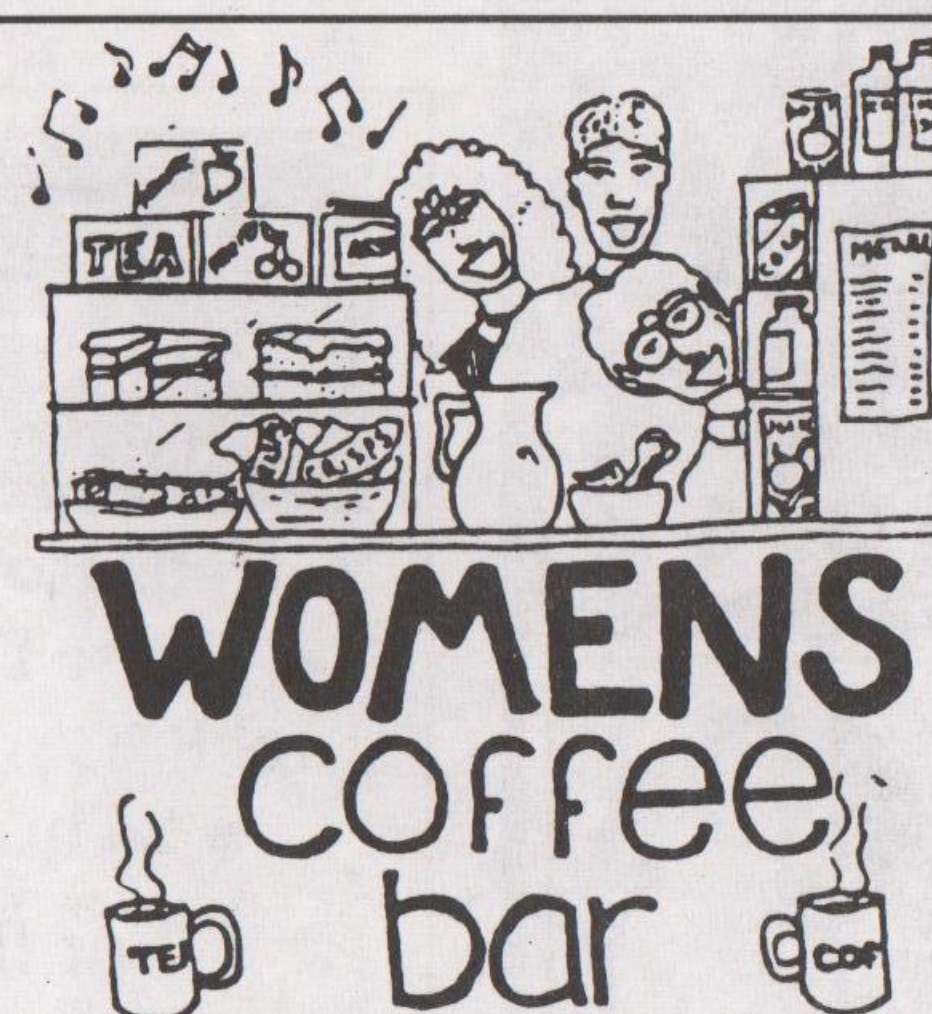
Anvil Press is a Workers Co-operative

## FREE AND CONFIDENTIAL HIV TESTING



The Health Shop  
Broad Street,  
Nottingham  
0115 947 5414

ALSO FREE CONDOMS,  
LUBE AND  
HEP B VACCINATION



every Wednesday 12pm-2pm  
45 King Street  
dental dams, lubricant and  
safer sex information available  
0116 2547412

## GAYWAYS

The world's largest international airline, British Airways, is close to writing sexual orientation into its equal opportunities policy, it was confirmed this week.

The news came in the same week as it emerged that the multinational had accorded partners of gay staff the same surviving pendant pension rights as straight workers. A BA spokeswoman said the company's new chief executive, Bob Ayling, was keen to promote equal opportunities.

'Boyfriends' is showing at The Metro, Saturday, 17th August, 9pm and Broadway, 30th & 31st August.

## The Samaritans

ORDINARY PEOPLE WHO CARE  
FOR ORDINARY PEOPLE DURING  
A PERSONAL CRISIS.

We need volunteers who can offer a few hours each week if you would like to know more, please come to one of our open evenings during 1996:

THURSDAY 8th AUGUST  
MONDAY 2nd SEPTEMBER  
TUESDAY 1st OCTOBER  
WEDNESDAY 30th OCTOBER  
THURSDAY 28th NOVEMBER  
EACH OPEN EVENING STARTS  
AT 7.30 p.m.

IF YOU WOULD LIKE TO KNOW  
MORE PLEASE TELEPHONE  
DERBY (01332) 364 444 FOR AN  
INFORMATION PACK AND  
VENUE DETAILS.

## COUNSELLING & PSYCHOTHERAPY EVE PARSONS

Psychotherapist in  
advanced Gestalt training  
The Healing Arts Centre,  
Hockley, Nottingham  
Tel: (0115) 958 0734



## REVIEW

## Beautiful Thing

Beautiful Thing starts with a rainbow and ends with the teenage lovers dancing together in the piazza below the Thamesmead tower blocks where they live, to the admiring glances of their neighbours. We go away fortified by the fact of love triumphing over prejudice.



A familiar path is trod: homophobic bullying at school, brutal beating of a sensitive boy at home; confusions over sexual identity; a first tentative visit to a gay pub and tears when parents find out. Beautiful Thing follows in the tradition of My Beautiful Launderette and The Two Of Us. It offers excellent material for personal and social education classes in school.

But the real charm of this film is shown in a number of ways. The dialogue sparkles with wit and bitchy put-downs. The estate soon reveals some wonderful comic characters including the Mama Cass groupie, Leah. She and Jamie are played with great naturalness and totally engage our affection and sympathy. That plucky East End spirit of coping with all of life's adversities is shown in the gutsiness of Jamie's mother and her dream of owning her own pub. The South London estate is lit by brilliant sunlight, the pace is lively and the motif of a soundtrack featuring The Mamas & The Papas adds to the atmosphere. We leave happy having found some gold at the end of the rainbow.

Nick Tyldesley

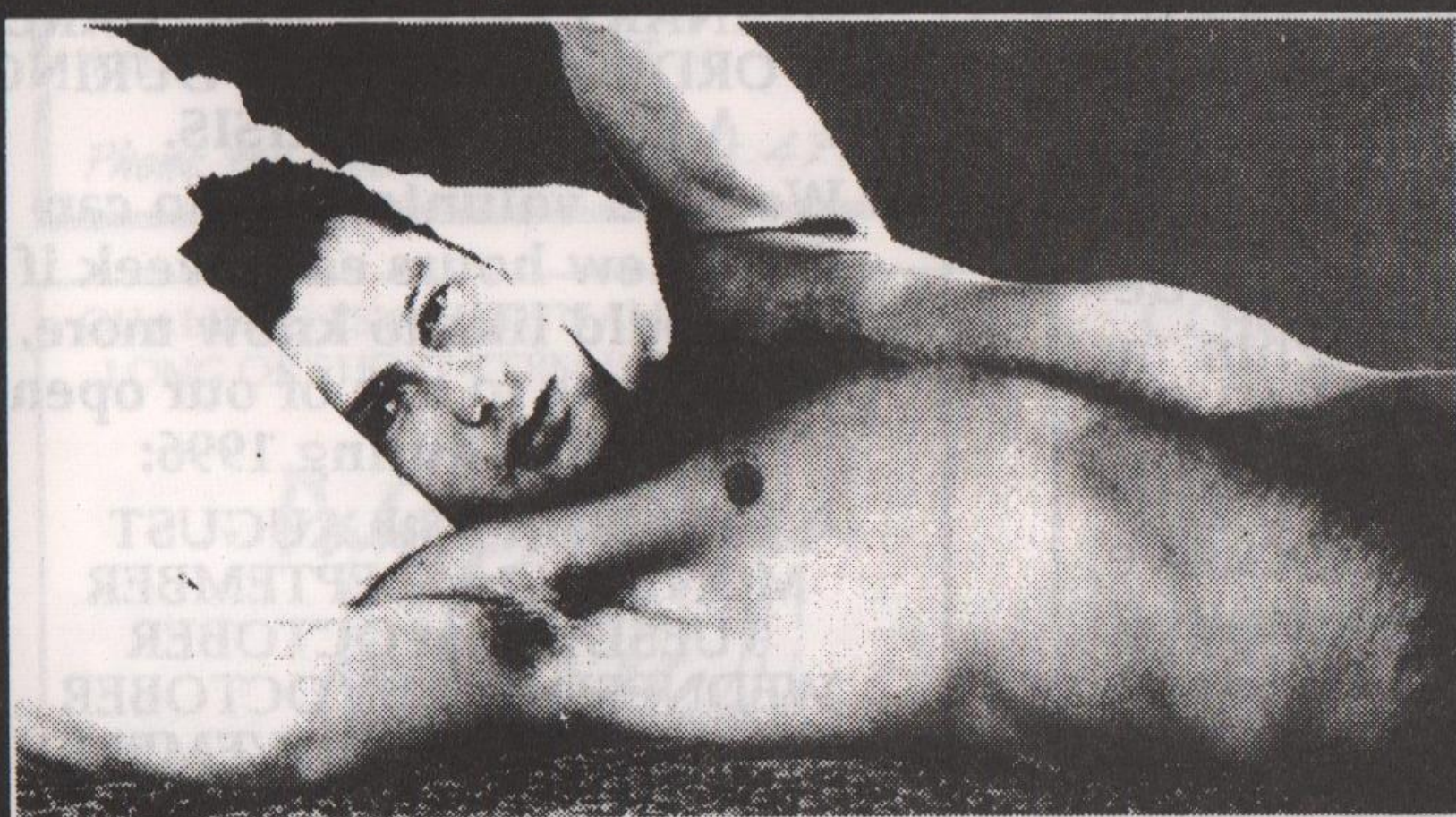
### Brenda welcomes you to The Stag & Pheasant

Lower Parliament Street,  
Nottingham Tel: 0115 950 6414

Free pool Tuesday nights/  
Saturday lunches, Karaoke  
Fridays or Saturdays (ring for  
dates)

GAY FRIENDLY

When only the best will do...



INTERNATIONAL CHAT  
SPEAK TO GAY GUYS  
AROUND THE WORLD  
**00592-574 651**

STORIES THAT WILL  
BLOW YOUR MIND  
**00592-240 828**



PROUDLY GAY OWNED & RUN  
CALLS COST 84p PER MIN OFF PEAK, £1.04 PEAK  
CALLS TERMINATE IN GUYANA PW PO BOX 7367 MELB 3004 AUS

### BATHLEY GUEST HOUSE

#### EXCLUSIVELY GAY

Tea/coffee making facilities in  
all rooms. No restrictions.  
Own key, plus FREE  
admission into  
Admiral Duncan.

101 Bathley Street,  
Trent Bridge, Nottingham

0115 986 2463

Cow Brow, Lupton, Cumbria LA6 1PJ  
Tel: 015395-67227 Fax: 015395-67848

Gateway to the Lakes

14 en-suite bedrooms  
Licensed Bar  
Bar lunches, suppers  
À la carte restaurant

2 minutes junction 36 on M6

### Established 1850 GINNS & GUTTERIDGE FUNERAL DIRECTORS & MONUMENTAL MASONS

- ◆ Rolls Royce Phantom Fleet.
- ◆ Horse Drawn Funerals.
- ◆ Pre Arranged Funerals.
- ◆ 24 hr. Compassionate Service.

For further Help & Advice contact:  
Chris Sarson M.B.I.F.D.  
St. Nicholas House, 51 Vaughan Way,  
Leicester, LE1 4NR Tel: 0116 251 6117  
75 Ashby Road, Loughborough. Tel: 01509 238912

## REVIEW

## Boyfriends

If you believe in romantic love and totally trust your boyfriend then this is not the film for you. In the country cottage weekend of hell on the Norfolk coast three couples bitchily dissect their relationships, masochistically recording their thoughts on the home video. Nearly every cliché is there - Matt wants true love and smothers Owen with affection; Will brings along some almost rough trade; Paul & Ben are breaking but the show must go on. Musical beds seems the name of the game and everybody seems a part of everybody else's past. Sensitive souls won't watch and cynics will say that this proves all gay relationships are doomed, but of course the rest of us will enjoy these familiar tiffs and quarrels, done with



quite a few witty quips - a gay version of 'Friends' with attitude. It's all a bit stagey - everyone walks across the screen and delivers their dialogue straight to camera. The love making is soft focus and there must be some significance in the deserted windblown beach?

The ending looks to be happy - we guess so that's alright. We never learn, do we - giving love one more chance.

Nick Tyldesley

## REVIEW

## Cabaret

Never having been to an amateur production before, I went along to see the recent Cabaret, performed by members of the Co-Operative Arts Theatre, with a slight hesitation. Being a fan of this piece for years, and being almost word perfect on its fabulous score, I must admit I was slightly concerned at how this modern day classic would be handled. I should not have worried. From the familiar opening lines of 'Willkommen', sung by 'MC' (Philip Daly) to the rousing 'Don't Tell Mama', from Sally Bowles (Alison Hope) I knew that all would be well.

Highlights included 'So What' and 'It Couldn't Please Me More', sung with such warmth and subtle humour by Barbara Tipton, who gave an excellent performance as Fraulein Schneider, along with the evocative 'Why Should I Wake Up?' sung by dashing leading man David Leathlean, as American Clifford Bradshaw.

But what of Alison Hope? Her performance as Sally Bowles was terrific and worthy of any similar performance I have seen on a commercial stage. Alison's perfect clipped English tones, used to great effect in the song 'Perfectly Marvellous' made her performance totally convincing as the English rose, drifting through pre-war Berlin, completely unaware of what was happening around her. Alison fairly gave her all in her final number, the title song, which left the capacity audience cheering.

Seeing this performance has made me realise that you don't have to visit vast commercial theatres to see a cracking good show. Next time I won't be so sceptical about visiting an amateur dramatic production!

Kevan Jackson

## PINEAPPLE INN

27 Burley's Way, Leicester. 0116 262 3384  
Opposite St. Margaret's Bus Station

### NEW WEEKLY LINE UP

MONDAY - FREE DRINKS, RAFFLE  
TUESDAY - FUN BINGO, PRIZES  
WEDNESDAY - FREE BBQ AND ANY  
4 BOTTLES FOR £5 BY 11PM  
THURSDAY - DISCO 'TIL 2AM  
ANY 4 BOTTLES, £5 BY 11PM  
FRIDAY NIGHT - KNIGHTLIFE DISCO  
- DJ TONY - 'TIL 2AM  
SATURDAY NIGHT - KNIGHTLIFE DISCO  
- DJ TONY - 'TIL 2AM

SUNDAY STRIPPER EVERY WEEK 'TIL 10.30PM  
DON'T FORGET WE ARE OPEN FRIDAY,  
SATURDAY, SUNDAY LUNCHTIMES, 12-4PM

## THE DOVER CASTLE

34 DOVER STREET, LEICESTER  
0116 233 200 5/6

NATHAN'S 18TH  
BIRTHDAY  
SUNDAY 4TH  
AUGUST

CABARET, SINGERS,  
DRAG ARTISTS, MALE  
AND FEMALE

LEICESTER'S LONGEST  
ESTABLISHED GAY BAR  
CONTACT TERRY FOR  
FORTHCOMING CABARET  
DETAILS



## LOOK OUT FOR THE PINK TRIANGLE!

For the past two years Leicestershire Health has piloted an extremely successful scheme to encourage the distribution of condoms and sexual health information to young people under the age of 18 and gay and bisexual men of all ages as part of the HIV prevention programme. The scheme was seized by gay men who nicknamed it The Pink Triangle/Pink GP Scheme.

The Scheme has subsequently received further funding and seventeen practices have decided to participate for the next twelve months.

Participation meant that most of the practise GP's, receptionists, managers and nurses were trained in working with gay and bisexual men since it was recognised there is no point in having a user friendly GP if you can't get past the reception staff. All the surgeries which have completed the training will be displaying posters with a large pink triangle. The project was so successful that several other counties are seeking to set up similar schemes.

The scheme was the idea of well known local GP Dr. Geoff Cook, who said, "We hope that this will encourage more gay and bisexual men and young people to use their GP's for confidential sexual health information and advice, as well as getting free condoms."

Andy Griffiths of the Mens Sexual Health Project commented "Gay and bisexual men often may be unsure whether or not to come out to their doctors. We warmly welcome this initiative. If you want a gay friendly GP make sure they're displaying the pink triangle."

Further information about the scheme can be obtained by phoning 0116 254 1747

## OUTBURST!

Dear Outright! readers,

The Lesbian Centre in Nottingham has received an abusive letter and we're wondering if anyone else has received a similar letter. It was obscene but not saying we should all go to hell or should be in camps, so probably not god squad or NF. We reported it to the police as it came from London and had a computer printed address label and therefore may be the first of a chain or one of many posted out. The policeman I spoke to was quite understanding and helpful and hopes that anyone else who's received a similar letter will get in touch directly with Paul Moore at Nottingham Police Station 0115 948 2999 ext 5115 or through me if you want your identity to remain confidential. Hopefully this is an unpleasant one-off but just in case it's part of something bigger, this is a way we can pool information and hopefully get something done rather than just taking abuse and violence. Anyone wanting to chat about it can ring me Dee Fairchild c/o the Women's Centre, Nottingham (0115) 9411475 Thursdays, 11-3pm or drop a line c/o The Women's Centre, 30 Chaucer St. Nottingham. Take no more!

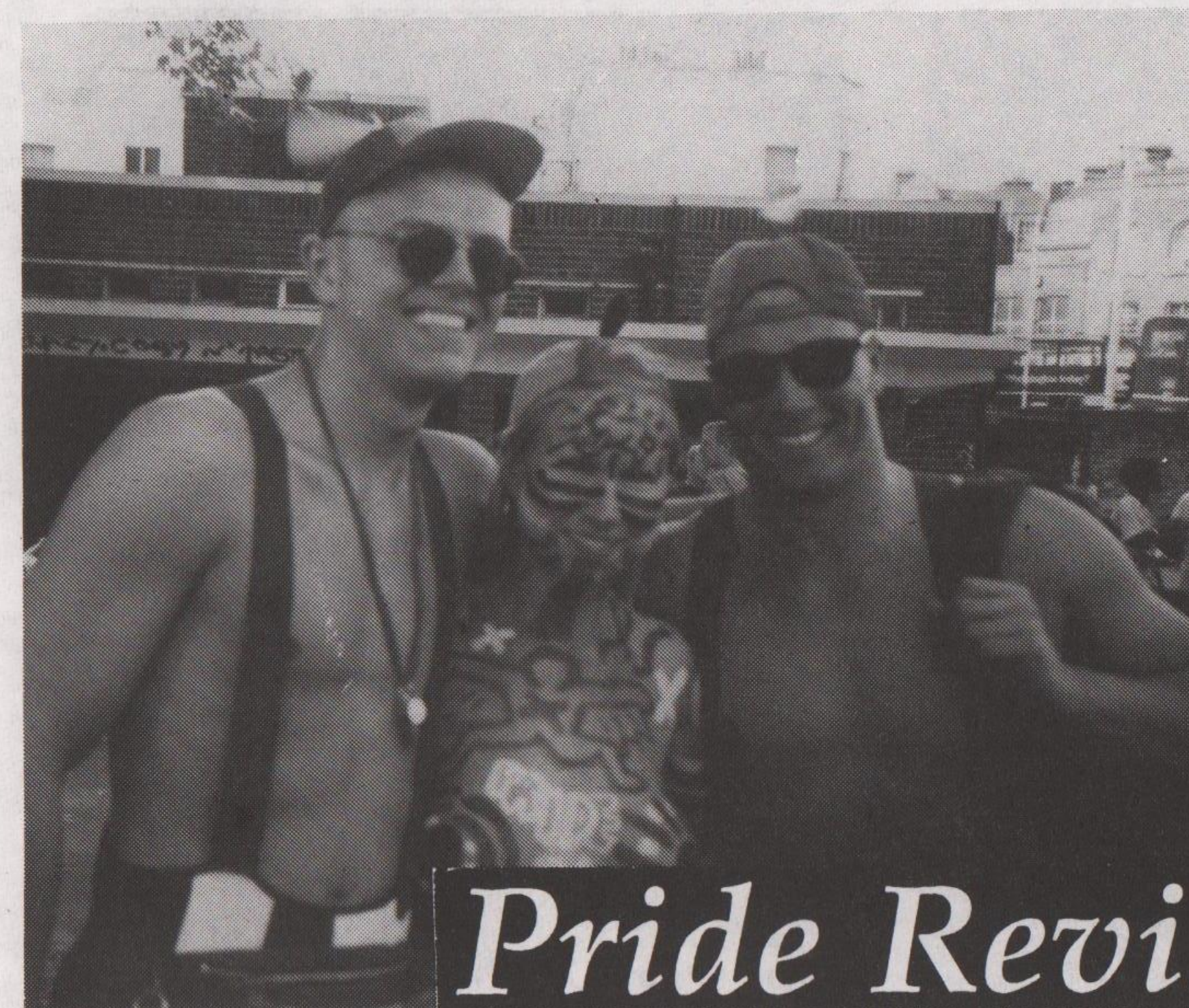
Dear Outright!

After the Notts Lesbian Line kindly sent me two copies of Outright!, I find myself ordering the next twelve issues, so please find enclosed a cheque for £5, a cheap investment for what I found to be a well written, informative witty and very addictive gay newsletter!!

Yours sincerely,

Sarah, Mansfield.

(Thanks, Sarah! It's nice to know we're appreciated!)



## Pride Revisited

A warm welcome awaits you from  
Andrew and staff at

**THE KINGS HEAD**

Open all day, every day

Emery Lane, Boston

01205 362 926



This year's Pride march attracted an estimated 70,000 through London and 160,000 at the Festival on Clapham Common



**NWTs**

**NOTTS WOMEN'S TRAINING SCHEME**

Victoria Workshops, 1 Cairns Street, off Huntingdon St,  
Nottingham NG1 3NN. Tel: 0115 958 6236

Ever wanted to try .... ?

\* Plumbing \* PCV/LGV driving (full driver's licence needed for this) \* Computing \* Electronic Engineering \* \* Carpentry/Joinery \* Painting & Decorating \*

You can with our 5 week Taster Courses which start Monday 9th Sept '96 or on Monday 4th Nov '96

To qualify you need to be ....

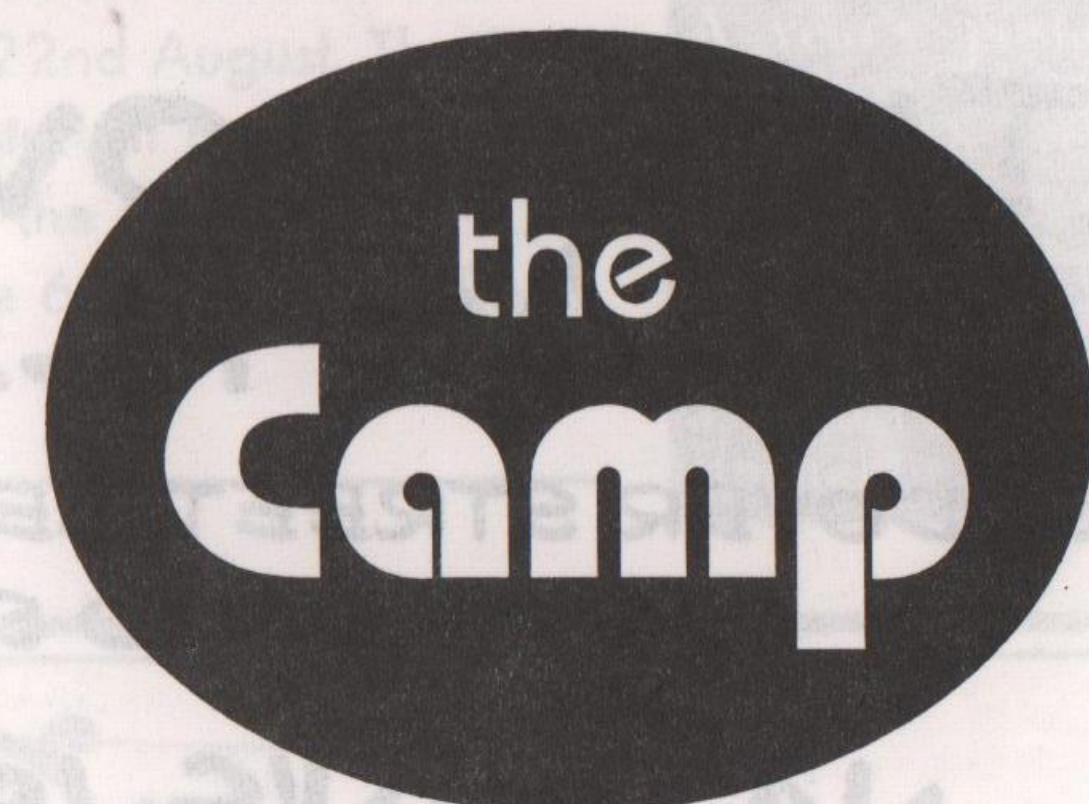
- ☐ A woman
- ☐ 18 or over
- ☐ Out of paid work
- ☐ with few/no qualifications

NWTs can offer you ....

- \* Lesbian worker support
- \* all tools, stationery, overalls that you need
- \* help towards travel costs
- \* on-site nursery for 2 - 5 year olds, or childminding fees
- \* course hours 9.45 - 3.30pm, Mon - Fri
- \* an active equal opportunities policy
- \* the chance to go on to our 6 month Foundation Course in the skill area of your choice (starting Jan '97)
- \* Lesbian & Bisexual women's support - contact group

What to do next .... ?

Come along to one of our Open Days, either on  
Thurs 15 August, 10 - 12 noon or  
Thurs 17 October, 1 - 3pm  
A creche will be provided  
Or phone Jane, Glenis, Janet, Sharna or Marjit  
for more information



**In the Lounge**  
70's Lounge music meets Camp Cabaret

**Drink**  
Absolut Vodka Bar with over  
20 flavours

**Entrance**  
10pm - 2am  
£3 / £2 (with flyer)

We accept Mastercard, Visa & Delta

**Hosted by**  
Hadrian Monroe (Deranged)

**Dance**  
DJ Matt Shelton  
(Carwash / Vogue Minogue)

**LIZARD LOUNGE**

Dance, Drink and Socialise In Laid Back Stylish Surroundings  
41 - 43 St Mary's Gate . The Lace Market . Nottingham . tel: 0115 952 3264

**Wednesday 21st August**

## METRO CINEMA

Green Lane, Derby: box office (01332) 340 170

### BURN!

London Lesbian and Gay Film  
Festival on Tour

**STONEWALL**  
Dir: Nigel Finch/USA/UK/1995/99  
mins.

The late Nigel Finch's colourful  
dramatisation of the landmark 1969  
Stonewall riot in New York offers  
both high-camp frolic and witty  
political drama. Flamboyant drag  
queens and gay activists find  
common cause and a public voice in  
the face of police brutality.

Fri 2-Tue 6 Aug. Fri & Sat 8.45pm,  
Sun 8.15pm, Tue 6.15pm

### PARALLEL SONS

Dir: John G. Young/USA/1994/93  
mins

Stereotypes of race and sexuality  
are pulled apart in the story of  
Seth, a dreadlocked white boy  
living in hicksville, who longs to  
be black.

Thu 15 Aug, 8.45pm

### BOYFRIENDS

Dir: Tim Hunter & Tom Hunsinger/  
UK/1995/85 mins.

A painfully hilarious comedy in  
which three mismatched gay  
couples embark on a weekend in the  
country, proving the maxim that hell  
is other people.

Sat 17 Aug. 9pm

### SEBASTIANE

Dir: Derek Jarman/UK/1976/86 mins.

Filmed with Latin dialogue, Jarman's  
version of the Catholic legend of Saint  
Sebastian is showing here in a new print,  
courtesy of the British Film Institute.

Sun 18 Aug. 5.30pm

### THE MIDWIFE'S TALE

Dir: Megan Siller/USA/1995/75 mins.

A sumptuous medieval fairytale in which  
Lady Eleanor falls for Gwynneth, the  
forest healer. Will she defy her husband  
and the church in time to stop the  
midwife's execution?

Tue. 20 Aug. 6.15pm

### THE LAST SUPPER

Dir: Cynthia Roberts/Canada/1994/96  
mins.

Shot in real time, this is a profoundly  
moving study of the final moments in the  
life of an AIDS sufferer preparing for  
euthanasia by lethal injection.

Tue 27 Aug. 6.30pm

### MAN OF THE YEAR

Dir: Dirk Shafer/USA/1995/87 mins.

Mock-documentary about Dirk Shafer,  
hailed by Playgirl as 'the ideal man for all  
women'. The catch is, he's gay and has  
no clue what women want at all. In  
addition to discovering that TDOP is a  
useful acronym for 'tasteful display of  
phallus', Shafer's film is a comic and  
intelligently probing examination of  
deception, image, media exploitation and  
the politics of visibility.

Sat 31 Aug. 8.30pm