

RUMOUR HAS IT....dykes have been spotted

clubbline...

Cellos The Meadows Club, Meadow Lane Stadium
8.30-1.30am. Women only. Info line 0115 961 7389
Gatsby's Huntingdon St, Nottm
Zone at Ritz's Lower Parliament St, Nottm
Revolution at MGM's (1st Mon), Greyfriar Gate, Nottm
Rapture Fri. fortnightly Leics University (contact
Leics L&G Switch: 0116 255 0667)
Kitsch Greyhound St (off Market Sq.). Gay members
Sat. Unity Fri (mixed)
Deluxe (3rd Mon), St. James St. 10-3.00am.
Miss Thing (The Wild Ox Pub) Fosseway. Every Fri.
8.00-2.00pm
ASDAs, Hyson Green. Fri.s. 6-8pm

pubbline...

The Criterion Mansfield Rd
The Vernon Forest Rd East
Forresters Arms Glasshouse St.
The Elm Tree Beech Ave, FF
The Lion Shipstone St, Hyson Green
The Forresters Inn Huntingdon St.
Admiral Duncan Lower Parliament St (free coach to
The Yard, Mansfield last Mon. of mth; to Peach,
Sheffield 2nd Mon.)
Stag & Pheasant Lower Parliament St

For access info contact individual clubs & pubs

PUBLICATIONS

DYKENOSIS

A newsletter with Health Info for dykes.
Produced by Lesbwell PO Box 4048,
Moseley, Birmingham B13 8DP.
Subscriptions £6 (£3 low income)

THE DYKE DIRECTORY

With over 100 entries around Central
England, including counsellors, mail
order, social groups decorators...
Produced by LesBeWell. £1

OUTRIGHT

Free newsletter for lesbian, gay &
bisexuals for East Midlands. News,
reviews & classifieds. Avail from
Mushroom B/shop & dyke friendly
pubs. Also avail. by subscription.

GAI GUIDE

Part of the GAI Project, The Health
Shop, Broad St. Nottm. A booklet
containing groups, organisations &
services for gay men, lesbians &
bisexuals in the Nottm area. For more
infor contact 947 6868.

OUTSIDE LINES

SURVIVORS OF LESBIAN ABUSE (SOLA) ~ tel. 0171 328 7389 Thurs
7-9pm

KENRIC ~ Largest nationwide social group for lesbians. Newsletter+Parties
+Discos+Penpals+Contact ads+Walks+Hols+Theatre+more.... Write to:
Kenric, B/M Kenric, London WC1N 3XX or contact Lesbian Line.

POSITIVELY WOMEN ~ Services to women with HIV/AIDS or any of the
associated conditions. Helpline 0171 4902327

SHEFFIELD WOMEN'S CULTURAL CLUB ~ Grinders Hill, Paternoster Row,
tel 0114 272 1866. Open every day. Food, drink, friendly atmosphere. Regular events

LEICESTER LESBIAN, GAY & BISEXUAL CENTRE ~ 45 King St, Leic.s.
Women's cafe, Wednesdays. tel. 0116 262 3384

STONEWALL ~ Lobbying organisation. Campaigning for lesbian & gay
rights. 0171 336 8860

RANK OUTSIDERS ~ Confidential advice & support for lesbian, gay &
bisexuals currently serving or ex-members of the armed forces. PO Box 444,
Watford, WD1 1WA or contact Stonewall Lobbying organisation 0171 336
8860.

GLADD ~ Gay & Lesbian Association of Doctors & Dentists. Nat. phone-line
number 07000-781225

LAGER ~ Lesbian and Gay Employment Rights. Women tel. 0171 704 8066

LOOKOUT!

This is the **first** issue of LOOKOUT! We hope you appreciate the fancy front page & all the info. Future editions will be
a basic diary page with updates so please keep this issue. Let us know...

- if you/another lesbian wants to be added to the mailing list
- if corrections need to be made
- if you wish to add information to the next issue - **DEADLINE: 16TH NOVEMBER**
- if you want to lend a hand to produce LOOKOUT!
- if you wish to make a donation towards LOOKOUT!'s costs
- your comments - we'd welcome some feedback

Address to write to:

LOOKOUT! The Lesbian Centre, Nottm Women's Centre, 30 Chaucer St, Nottm. NG1 5LP

LOOKOUT!

ISSUE ONE

SEP OCT NOV

1996



LOOKOUT! is a new Information
Listings issued by the
Nottingham Lesbian Centre for
dykes in Nottinghamshire. It
offers information and ideas on
groups, places to meet, local
and national events,
entertainment, health/welfare
advice, courses and
training etc...

INFORMATION FOR LESBIANS IN NOTTINGHAMSHIRE

LESBIAN INTEREST GROUPS

TALKBACK DISCUSSION GROUP ~ Lesbian Centre @ Women's Centre. Meet every 2nd Wednesday of mth. 8pm. Next discussion: 'WORK' 11th Sept.

DRUMMING GROUP ~ Group will start in September. Any women interested contact L-L or Switch.

THE LESBIAN MUSICIANS GROUP ~ Lesbian Centre @ Women's Centre. 8pm. 3rd Wednesday of mth. For lesbians or women questioning their sexuality who sing and/or play a musical instrument. All standards/ styles welcome.

NATIONAL CENTRE FOR LESBIAN & GAY ARTS ~ A new project to develop a facility which will support & promote all lesbian & gay art forms. If you want to know more &/or get involved with its planning & development contact: Jacky Graining, NCVS, 33 Mansfield Road, NG1 3FB Tel. 947 6714.

Lesbian Centre Co-ordinating Group (LCCG) ~ @ Nottm Womens Centre. Meets 7.30pm 4th Wednesday of mth to discuss Centre biz, ideas, plans. All welcome. Write to the Lesbian Centre or contact Lesbian Line.

NOTTINGHAM HYKING DYKES ~ Walks, usually in Derbyshire. 3rd Sunday of mth. Bring lunch. 6-10 miles with tea shop along the way! Contact L-L or Switch for details.

EAST MIDLANDS GAY OUTDOOR CLUB ~ Outdoors, rambling, cycling & camping for gay men & lesbians. Part of the Gay Outdoor Club. Contact Switch or L-L.

GAY BIKERS MOTORCYCLE GROUP ~ Events, outings & socials for biking riding gays & lesbians. Ring Switchboard or write to GBMCC, PO Box 33 Long Eaton, Nottm, NG10 2BF.

For confidentiality private numbers have been transferred to the following lines. Ring:

Lesbian Line (L-L)
0115 941 0652

Lesbian & Gay Switchboard (Switch)
0115 941 1454

LESBIAN SOCIAL/SUPPORT GROUPS

BLACK LESBIAN GROUP ~ Black Lesbian Room @ Nottm Women's Centre. Undergoing changes. Tel. line temporarily suspended. Contact BLG via pigeonhole or L-L / Switch.

LESBIAN CENTRE DROP-IN ~ Nottm Women's Centre. Every Wednesday 11-3pm. Enjoy a chat, a game of pool, darts, refreshments. Young children welcome. Creche available. Currently no w/chair access. Induction loop avail.

YOUNG LESBIAN GROUP ~ Base 51. Every Wednesday 6-9pm. 51 Glasshouse St. Nottm. Support group for young women age 25 & under. Offering safe & confidential environment for advice, fun plus a chance to meet other young women. Contact: Kate/Janet 952 5040 (w).

WAG (Women Are Gorgeous) ~ Every Friday night @ Lesbian Centre. 8pm. If you are unsure (or sure!) of your sexuality meet others for a friendly social. Coffee, company, conversation. Contact Lesbian-Line 9410652.

LOUGHBOROUGH WOMEN'S BAR ~ Social group meets 8.30pm @ Labour Club, Fennel St, Loughborough. 2nd & 4th Mon of mth.

JEWISH LESBIAN GROUP ~ Currently no regular meeting except at festival times. Group would like to re-establish mthly meetings. For further details contact L-L or Switch.

SELF-INSEMINATION GROUP ~ For all women considering/using self or donor insemination. The group offers support & a chance to talk about the issues involved as well as looking at possibilities for practical help. For more info, contact L-L or Switch.

HESHIMA GROUP ~ For Black & Asian lesbian, gay, and bisexuals of all ages. 2nd Wednesday of mth. 7.00pm. Information Shop, Carlton St, Hockley. Informal, social and supportive. Further information contact Information Shop 958 5111.

GAY AND LESBIAN YOUNG PEOPLE (GLYP) ~ Youth group for gay, bisexual and lesbians under 26. Social events, w/shops & outings. Contact Switch or L-L for details.

FFLAG ~ Families & Friends of Lesbians & Gays. Support to parents & their gay, lesbian & bisexual sons and daughters. Contact Switch or L-L for details.

NOTTINGHAM TRENT UNIVERSITY LGB SOCIETY ~ Open to non-students. Weekly social/discussion in term time. Mondays 7.30pm. Write c/o NTUUS, Byron Building or ring L-L / Switch.

UNIVERSITY OF NOTTINGHAM LGB SOCIETY ~ Student support with weekly meets in a secure & confidential place. Open to non-students. Every Tues in term time. Ring Gayline for details.

EASTERN RAINBOW ~ Social/support group for deaf lesbians & gays and hearing friends. Lesbian signing interpreter available for events. Next meet Sept 13th. Contact L-L or Switch.

LESBIANS & GAYS IN MSF ~ Support & campaigning for Manufacturing, Science & Finance Union. Covers engineering, education, health, insurance, IT, housing assoc., & voluntary sector (accepted as members w/out subs). National, regional & local meetings. Contact L-L or Switch.

UNISON LESBIAN GAY GROUP ~ Support group for Unison members. Regular meetings, national conferences, etc. Contact Paul Amann 977 4208 (w).

NOTTINGHAM COUNTY COUNCIL WORKERS ~ Informal support & networking for LGB employees. Contact Paul Amann 977 4208 (w).

PINK CHALK ~ Confidential forum for gay, lesbian & bisexual teachers & education workers. Discussion, confidential support & socials. Meets mthly. Contact Switch or L-L.

LESBIAN & GAY CHRISTIAN MOVEMENT ~ Support and fellowship to lesbian & gay people with a Christian background. Regular social s. Contact Switch/L-L.

METRO COMMUNITY CHURCH ~ Church for lesbian, gay & bisexuals. Meetings @ Queens Walk Community Centre, The Meadows, +coffee every Sunday 11.30-12.30. Coffee morn on Wednesdays 11-3pm. Blessings & Holy unions starting Sept. Contact Wendy 975 0031 (w).

SEPTEMBER

SUN 1 "CELLULOIDICONS: JODIE"
"CELLULOIDICONS: BLACK DIVAS"
MCC

MON 2 LESBIAN-LINE/GAYLINE
MGM/BROADWAY
WIL/NTU

TUE 3 "VICTIM"
BROADWAY
WIL/UN

WED 4 LESBIAN CENTRE DROP-IN
LESBIAN-LINE
BASE 51 YOUNG LESBIAN GROUP
BROADWAY/MCC

THU 5 "CELLULOID CLOSET"
"LITTLE MAN TATE"
"CAGED"
BROADWAY/WIL
FRI 6 WAG/WIL
SAT 7 WIL
SUN 8 "CELLULOIDICONS: THIS ROAD WILL
NEVER END"
"CELLULOIDICONS: THE STREET"
MCC

MON 9 LESBIAN-LINE/GAYLINE
L'BOROUGH WOMEN'S BAR
WIL/NTU

TUE 10 "STRANGERS ON A TRAIN"
WIL/UN

WED 11 LESBIAN CENTRE DROP-IN
BASE 51 YOUNG LESBIAN GROUP
LESBIAN-LINE
HESHIMA
TALKBACK/MCC

THU 12 "CELLULOID CLOSET"
"MY OWN PRIVATE IDAHO"
"THE KILLING OF SISTER GEORGE"
WIL

FRI 13 EASTERN RAINBOW
WAG/WIL

SAT 14 WIL
SUN 15 NOTTM HYKING DYKES/MCC

MON 16 LESBIAN-LINE/GAYLINE
DELUXE/WIL/NTU

TUE 17 WIL/UN

WED 18 LESBIAN CENTRE DROP-IN
BASE 51 YOUNG LESBIAN GROUP
THE LESBIAN MUSICIANS GROUP
LESBIAN-LINE/MCC

THU 19 WIL
FRI 20 WAG/WIL

SAT 21 WIL
SUN 22 MCC

MON 23 LESBIAN-LINE/GAYLINE
L'BOROUGH WOMEN'S BAR
WIL/NTU

TUE 24 HIDDEN TALENTS CAB & DISCO
WIL/UN

WED 25 LESBIAN CENTRE DROP-IN
BASE 51 YOUNG LESBIAN GROUP
LESBIAN-LINE/LCCG/MCC

THU 26 WIL
FRI 27 CELLOS/WAG/WIL
SAT 28 END OF SUMMER DANCE/WIL
SUN 29 THE LESBIAN BREAKFAST/MCC

MON 30 LESBIAN-LINE/GAYLINE/WIL/NTU

OCTOBER

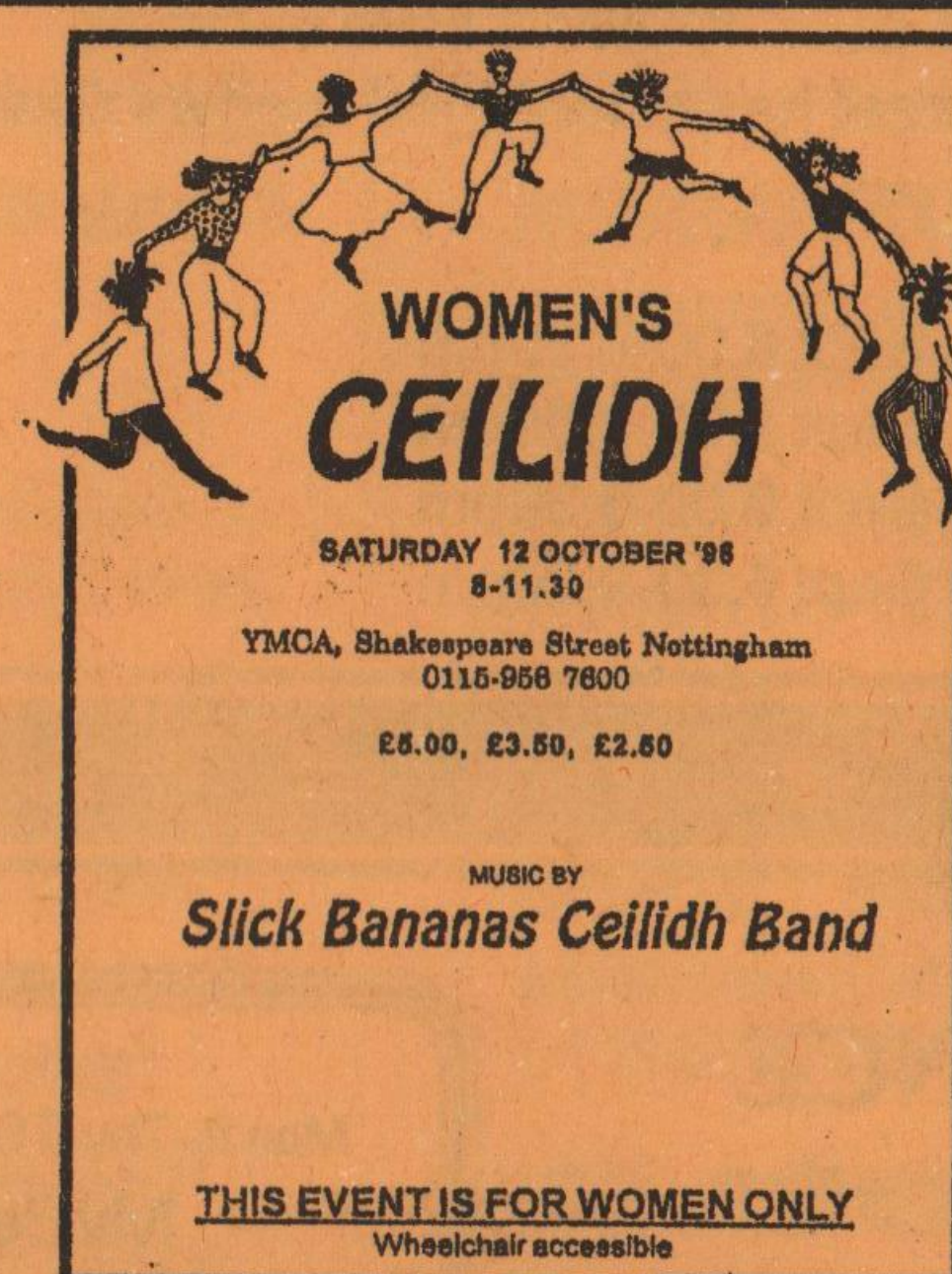
TUE 1 WIL/UN
WED 2 LESBIAN CENTRE DROP-IN
BASE 51 YOUNG LESBIAN GROUP
LESBIAN-LINE/MCC

THU 3 WIL
FRI 4 WAG/WIL
SAT 5 WIL
SUN 6 MCC

MON 7 LESBIAN-LINE/MGM
GAYLINE/WIL/NTU

TUE 8 WIL/UN
WED 9 LESBIAN CENTRE DROP-IN
BASE 51 YOUNG LESBIAN GROUP
HESHIMA
TALKBACK
LESBIAN-LINE/MCC

THU 10 WIL
FRI 11 WAG/WIL
SAT 12 WOMEN'S CEILIDH/WIL
SUN 13 MCC



MON 14 LESBIAN-LINE/GAYLINE
L'BOROUGH WOMEN'S BAR
WIL/NTU

TUE 15 WIL/UN

WED 16 LESBIAN CENTRE DROP-IN
BASE 51 YOUNG LESBIAN GROUP
LESBIAN-LINE/MCC
THE LESBIAN MUSICIANS GROUP

THU 17 NWT'S OPEN DAY/WIL
FRI 18 WAG/WIL
SAT 19 WIL
SUN 20 NOTTM HYKING DYKES/MCC

MON 21 LESBIAN-LINE/GAYLINE
WIL/NTU/DELUXE

TUE 22 WIL/UN

WED 23 LESBIAN CENTRE DROP-IN
BASE 51 YOUNG LESBIAN GROUP
LESBIAN-LINE
LCCG/MCC

THU 24 WIL
FRI 25 CELLOS/WAG/WIL
SAT 26 WIL
SUN 27 LESBIAN BREAKFAST/MCC

MON 28 LESBIAN-LINE/GAYLINE
L'BOROUGH WOMEN'S BAR
WIL/NTU

TUE 29 HIDDEN TALENTS/WIL/NTU
WED 30 LESBIAN CENTRE DROP-IN
BASE 51 YOUNG LESBIAN GROUP
LESBIAN-LINE/MCC

THU 31 WIL

NOVEMBER

FRI 1 WAG/WIL
SAT 2 WIL
SUN 3 MCC

MON 4 LESBIAN-LINE/GAYLINE
WIL/NTU
MGM

TUE 5 WIL/UN
WED 6 LESBIAN CENTRE DROP-IN
BASE 51 YOUNG LESBIAN GROUP
LESBIAN-LINE/MCC

THU 7 WIL
FRI 8 WAG/WIL
SAT 9 WIL
SUN 10 MCC

MON 11 LESBIAN-LINE/GAYLINE
L'BOROUGH WOMEN'S BAR
WIL/NTU

TUE 12 WIL/UN
WED 13 LESBIAN CENTRE DROP-IN
BASE 51 YOUNG LESBIAN GROUP
HESHIMA
TALKBACK
LESBIAN-LINE/MCC

THU 14 WIL
FRI 15 WAG/WIL
SAT 16 WIL/LOOKOUT! DEADLINE
SUN 17 NOTTM HYKING DYKES/MCC

MON 18 LESBIAN-LINE/GAYLINE
WIL/NTU/DELUXE

TUE 19 WIL/UN
WED 20 LESBIAN CENTRE DROP-IN
BASE 51 YOUNG LESBIAN GROUP
THE LESBIAN MUSICIANS GROUP
LESBIAN-LINE/MCC

THU 21 WIL
FRI 22 WAG/WIL
SAT 23 CELLOS/WIL
SUN 24 LESBIAN BREAKFAST/MCC

MON 25 LESBIAN-LINE/GAYLINE
L'BOROUGH WOMEN'S BAR
WIL/NTU

TUE 26 WIL/UN
WED 27 LESBIAN CENTRE DROP-IN
BASE 51 YOUNG LESBIAN GROUP
LESBIAN-LINE/MCC
LCCG

THU 28 WIL
FRI 29 WAG/WIL
SAT 30 WIL

KEY

WIL - Womens Information Library
WAG - Women are Gorgeous
LCCG - Lesbian Centre Co-ordinating Group
NTU - Nottingham Trent University
UN - University of Nottingham
MCC - Metropolitan Community Church
" - TV

Mon	Tue	Thu	Fri	Sat
5.30-7.30	12-2pm	11-3pm	2-5pm	11-2pm