

The Diary Page

Fri 1		Mon 1		Wed 1	
Sat 2	BAD	Tues 2		Thurs 2	BAD/RIPE GROUP
Sun 3		Wed 3		Fri 3	
Mon 4		Thurs 4	BAD	Sat 4	BAD
Tues 5		Fri 5		Sun 5	
Wed 6		Sat 6	BAD	Mon 6	
Thurs 7	BAD	Sun 7		Tues 7	Lookout! COPY DATE
Fri 8	IWD 2002/WAG	Mon 8		Wed 8	
Sat 9	BAD	Tues 9	Women's Room	Thurs 9	BAD
Sun 10		Wed 10		Fri 10	WAG-quiz nite
Mon 11		Thurs 11	BAD	Sat 11	BAD
Tues 12	Women's Cafe	Fri 12	WAG-Aromatherapy	Sun 12	
Wed 13		Sat 13	BAD	Mon 13	
Thurs 14	BAD/RIPE GROUP	Sun 14		Tues 14	
Fri 15		Mon 15		Wed 15	
Sat 16	BAD	Tues 16		Thurs 16	BAD
Sun 17	Nottm Hyking Dykes	Wed 17		Fri 17	
Mon 18		Thurs 18	BAD/RIPE GROUP	Sat 18	BAD
Tues 19	Quiz nite at the Cafe	Fri 19		Sun 19	Nottm Hyking Dykes
Wed 20		Sat 20	BAD	Mon 20	
Thurs 21	BAD	Sun 21	Nottm Hyking Dykes	Tues 21	
Fri 22		Mon 22		Wed 22	
Sat 23	BAD	Tues 23		Thurs 23	BAD
Sun 24		Wed 24		Fri 24	
Mon 25		Thurs 25	BAD	Sat 25	BAD
Tues 26		Fri 26		Sun 26	
Wed 27		Sat 27	BAD	Mon 27	
Thurs 28	BAD	Sun 28		Tues 28	
Fri 29		Mon 29		Wed 29	
Sat 30	BAD	Tues 30		Thurs 30	BAD
Sun 31				Fri 31	

Don't forget to check  online for regular updates...

<http://www.lookout.netfirms.com>

NU Lesbian & Gay Line (Term time)
0115 9514999 8.00 - 10.00pm
Police Homophobic Crime Helpline 0115 967 6161

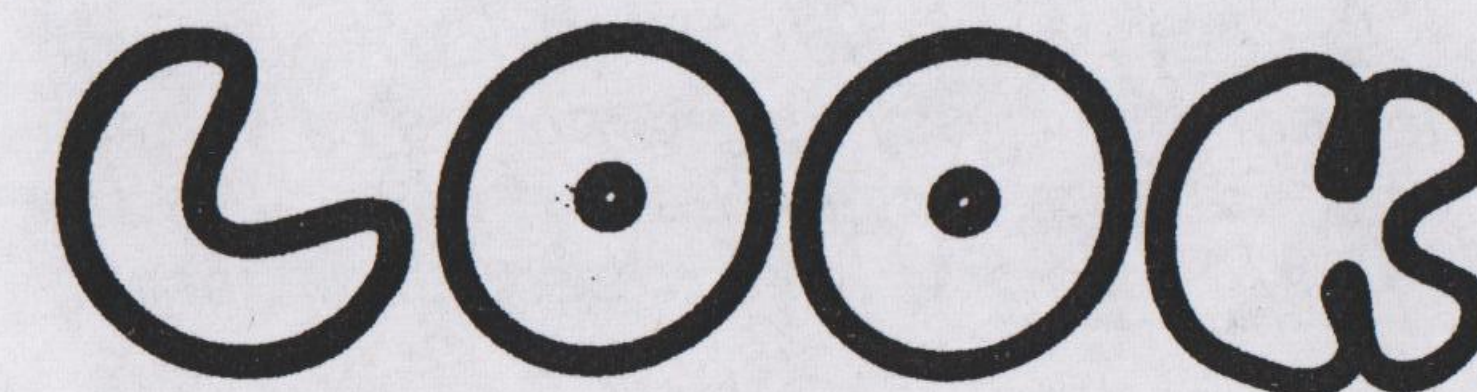
For confidentiality some private numbers have been transferred to the following lines

Lesbian Line - LL - 0115 941 0652
Lesbian & Gay Switchboard - Switch - 0115 934 8485
PLEASE NOTE: Unless specified as lesbian only these groups, services and events may apply to all women or to lesbians, gays and bisexuals.


 Available on tape. Ring 0115 847 1544

BAD	Badminton
LC	Lesbian Centre
LCCG	Lesbian Centre Coordinating Group
LL	Lesbian Line
MCC	Metropolitan Community Church
NTU	Nottingham Trent University
UN	University Of Nottingham

For further info ring
 Lesbian Line 0115 9410652



The Women's Cafe

Second Tuesday of the month

QUIZ NIGHT AT THE CAFE

Tuesday 26th March - from 7pm, quiz starts 8.30pm. Admission 50p, at the Real Art Cafe, entry 50p.



All profits to LL
 Great prizes and lots of fun!
 Good food and drinks

Get there early to avoid disappointment and to get a seat - the last quiz was heaving!

Heathcote Street, Nottingham. Women only

WANTED FEMALE PERFORMERS

We are looking for performers for future gigs at the Women's Centre. If you are a solo performer



(Music, comedy, poetry etc) or a women's band please contact the Lesbian Centre with a demo.
We look forward to hearing from you!

DIGGING DYKES

Interested in gardening?
 Like to join a social gardening hopefully with some garden visits??



Phone Morag on 0115 8471544, write to the Lesbian Centre or email
nottslesbiancentre@ntlworld.com



Issue Twenty two Mar/Apr/May 2002
 Lemme-outa-heeeere!!!!

**International
Womens Day 2002**
 Nottingham Women's Centre
 Friday March 8th, 10am to 3pm

**NEW UK
online
centre launch**



Courses, workshops, food,
 stalls Free creche

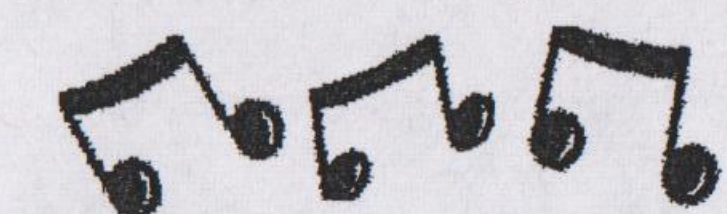
For more information & to book workshop places ring Joanna on 9411475
 The Nottingham Women's Centre
 30 Chaucer Street, Nottingham, NG1 5LP

all women welcome

The 36th National Folk Festival

a celebration of traditional music. Workshops, lectures, Craft And Music Fair and the National Song competition.

Featuring **Catherine Perrier, Anne Reid, Sheila Stewart, Ishbel MacAskill and Patricia Flynn.**
 12 to 14th April 2002, Sutton Bonnington campus, near Loughborough, Leicestershire.



For a programme or more information
 Tel: (01296) 415333 fax: (01296) 397092
 e-mail: johnh@fosterwiggins.co.uk

Sponsored by Champions Solicitors

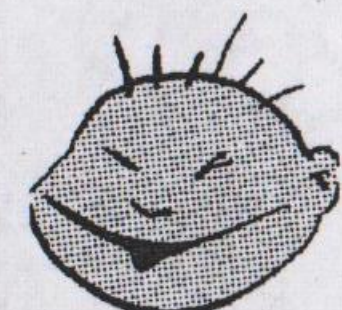
Welcome...



to this sizzling spring edition of **LOOKOUT!** AS you will see when you read your copy there's loads more to see and do on the lesbian scene (in the widest sense of the word) in the coming months.



For older lesbians an all new spangly group called RIPE is starting up and a gardening group is also new. So there's no excuse for sitting at home watching reruns of Bad Girls, although that can be fun too.



Next issue we'll be running some articles by you the readers, just think of all those women you can impress with your reflections on, well anything really. Send stuff to the usual address/ email at the Lesbian Centre.

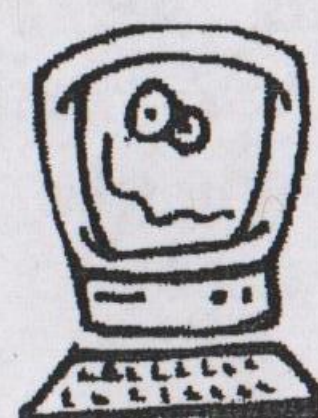
Thanks for reading and remember donations to keep **LOOKOUT** afloat are always welcome.

STAA Allotment Project

Promoting and enhancing the historic allotment gardens in St. Anns, Nottingham



An Allotment keeps you fit, gives you fresh food, great satisfaction and enjoyment. If you would like to find out more about renting an allotment garden please contact Julie Scott and Colin Haynes, STAA Allotment Project, c/o Chase Neighbourhood Centre, Robin Hood Chase, St. Anns, Nottingham. NG3 4EZ. Or telephone 0115 9821511



PC CLINIC

If your machine is not performing as it should I can fix it

Complete Re-format & clean install - £38

Custom PC's from quality components, usually for less than a ready made system of similar specification.

Hardware problems - repair or replace

Standard 12 month warranty given with any new system

email: allymoizer@ntlworld.com or phone: 07980 657 502

LOOKOUT! VOLUNTEERS

Yes I'm afraid it's true, we still don't have enough editors to keep this classy mag in print, so if you are **URGENT** interested and have 1-2 hours to spare every three months

(It might mean giving up Eastenders or the Street for the evening, but just think of the kudos...) please phone lesbian line: 0115 9410652 or email nottslesbiancentre@ntlworld.com

RIPE GROUP For lesbians

interested in books, films, theatre and an alternative to the club scene.

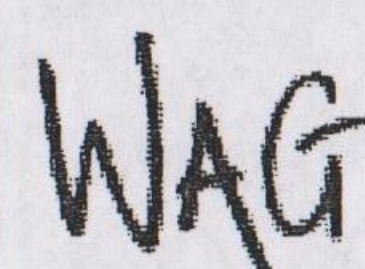
Meet in the Lord Roberts pub, Broad Street, Nottingham at 8.00pm, Thursdays. Next dates: 14th March, 18th April and 2nd May. Phone the LL for details



PARENTS OF TEENAGERS COURSE

For parents/ carers who feel they need support with their teenagers.

Please phone Pat or Linda on 0115 9424555/8 or Linda Stewart on 07855 049229/ Pat Burton on 0772 0651001. The course starts February 2002. Travel and childcare expenses can be arranged.



Yes we are still here and we've started off 2002 with a successful January get together of 18 women!

For the New Year we are opening up the old pool table and darts board and there's plenty of room to sit and chat, or listen to music.

From April there will be activities most evenings. On the 12th April we'll have someone showing us all about aromatherapy, on 10th May there'll be a quiz night. Other ideas, offers to lead activities welcome.

WAG is open to all Lesbians born women, and women just coming out... no experience necessary!

It's a chance to meet new friends and extend your social life. We welcome new friends - and old friends who haven't been for a while! So come along, bring refreshments, music, ideas, yourself!



We meet on the 2nd Friday of each month at the Nottingham Women's Centre (no smoking building), 30 Chaucer Street

For more info Contact Lesbian Line on 0115 941 1475

Note: The Women's Centre Lesbian Space is situated on the second floor. There is no lift.

CAMPIONS SOLICITORS

Free advice on any
Accident Claim, Matrimonial,
Relationship & Child Disputes,
Debt Advice,
Welfare Benefits,
Housing Difficulties.

Legal aid available
Free legal advice Freephone

0500 666 603

7 days 8am - 10pm

45 - 49 Mansfield Road,
Nottingham, NG1 3FH



Lookout for love!



Mature eccentric, non-smoker and avid reader, happy with both silence and her own company, looking for new friends with whom to share garlic, red wine, good food and good music, gardens, birds and Buffy...

Box No. 1



30's musician, enjoys music, current affairs, gardening, cooking, reading and other quiet pursuits, seeking new friends of similar age for relaxing times and conversation.

Box No. 2



Warm, intelligent, sensual, passionate, honest, n/s, 34. Varied interests: walking, the outdoors, dance, music, art, travel, good food & friends, theatre, reading, meditation and yoga etc. Seeks woman to share richness of life.

Box No. 3

Please send a donation to help with printing costs, cheques made payable to the NLC Centre. Happy hunting for Ms. Right!

To reply to an advert...

Write your letter and place it in a stamped, sealed envelope with the box number written on the front. Place this in another stamped envelope and post to: **Lookout! Personals replies, Nottingham Lesbian Community Centre, 30 Chaucer Street, Nottingham, N G 1 5 LP.**

Nobody will read your reply and it will be forwarded directly to the advertiser.

Don't forget to enclose your reply address!

HELP Looking for about 200 PC (not MAC's) users to answer 5 simple questions about PC problems. If you would be willing to help please email me and I will send you a questionnaire

FREE PC overhaul for the 100th form to be sent back

allymoizer@ntlworld.com



Sheffield Hiking Dykes



is a walking group for lesbians and women questioning their heterosexuality.

For more information about the group, contact Louise: 0114 2671706, Deena: 0114 2686409 or Pauline: 01623 550209. The full walk list is available at...

www.hikingdykes.co.uk

Nottingham Hyking Dykes



Fresh air and fun!

Are you a dyke who is keen on rambling or would you just like to get out in the fresh air and meet some like-minded women?

We meet every month, usually the third Sunday. This is a walking group for female born lesbians only. Walks are 6 to 8 miles often in Derbyshire.

Sunday 17th March. Meet in Tissington at the Tissington Trail head car park (GR 177 521) (pay to park) BUT the walk is not on the trail. Length about 7 miles, goes through Parwich. 10.30am prompt start. **Sunday 21st April** Meet in Longnor market place (GR089649) for a 7 mile walk to Pilsbury. Joint walk with Sheffield. 10.30am prompt start.



SUNDAY 19TH MAY the whole weekend!

We have booked the youth hostel in Alstonefield

There are still some places, alternatively join us on Sunday at the public car park in Alstonefield (GR131556) for 10.30am start. GR251788. Bring warm/waterproof clothing.

Further information and up to date details of our walks are available on our website www.nottinghamhd.homestead.com or via our e-mail list hyking@celiac.clara.co.uk

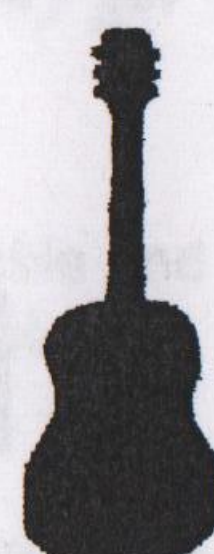
You can also contact the Nottingham Lesbian Line (0115 9410652) or send 4 x SAE's to Mo Nottingham HD, c/o Nottingham Women's Centre, Chaucer Street, Nottingham, (mark clearly Please Forward).

Singer/songwriter/guitarist

seeks another singer for singing for pleasure, and perhaps occasional future gigs.

Any style. Tel: 0115 847 1544

or e-mail: morag@ntlworld.com



Women's Health Grants

The Women's Trust Fund gives small grants (individuals up to £300, groups up to £500) to women who are training for specific healing skills and have insufficient access to state finance, eg for books, fees, transport, baby sitting, materials, to women who need financial help to set up in health practice eg for equipment, furnishings, decorating, remedies, and to women's groups setting up projects to promote women's health and well-being, eg for capital expenditure, publicity and other expenses.

For more information and application form contact Women's Trust Fund, P O Box 1, Rossendale, Lancashire, BB4 5AB.



Morrigan Lesbian Housing Coop

has vacancies in large shared house. Please contact 0115-9422229 for details and an application form.

Decorating blues?



Then email Karen for all your decorating needs pinkpaintbrush@clara.co.uk



Broadway Cinema

Independence Under Threat

Broadway Cinema as we know it, the Midlands' leading non-commercial cinema is under threat from the newly established Film Council. For more information, please go to for more info and the Broadway Press Release

<http://www.broadway.org.uk/home/fc/press.html>

Broadway is keen to hear from its audiences and people who feel strongly about Broadway maintaining its independence.

Please email us at director@broadway.org.uk or write to us at Broadway Cinema, 14-18 Broad St, Nottingham, NG1 3AL, and we will forward your comments to the Film Council.



Holocaust Memorial Events

took place all over the UK on 28th January as people joined with others to commemorate this tragically defining episode of the 20th Century. We must remember because none of us can afford to forget.

Beth Shalom book shop & visitor centre <http://www.holocaustcentre.net/>

The Holocaust Centre, Beth Shalom, Laxton, Newark, Notts, NG22 0PA, Tel. +44 (0) 1623 836627 Fax. +44 (0) 1623 836647, e-mail office@bethshalom.com Reg. Charity Number 509 022



ACTION GROUPS

The new directory of self-help groups in Nottingham and the surrounding area is now available containing details of over 250 self-help groups.

To order your copy, find out about self-help groups or get help to set up your own group contact: Self-help Nottingham, Ormiston House, 32-36 Pelham Street, Nottingham NG1 2EG. Tel: (0115)9111661 for information enquiries 9a.m. - 1p.m; (0115)9111662 for admin & general enquiries Fax: (0115) 911 1660 E.mail: admin@selfhelp.org.uk or visit our web page on <http://www.selfhelp.org.uk>

Civil Partnerships Bill to be re-introduced in the autumn Lord Lester of Herne Hill announced on 11 February 2002 that he would not proceed with his Civil Partnership Bill at this stage. He will instead re-introduce the Bill in the autumn and call for a Select Committee to look at the issues in detail. Such a committee could also consider the review currently being conducted by the government.

In the mean time pressure on the government needs to be stepped up. Please write to your MP and the Cabinet Office who are leading the government review.

Further information can be found at www.stonewall.org.uk

Pension Rights Victory! Last summer at a meeting in the House of Commons to launch the partnership campaign Stonewall called for MPs to look at their own pension scheme which currently provides no benefits for unmarried partners. Evan Harris, Liberal Democrat MP for Oxford West and Abingdon took up the call and his amendment to equalise pension provisions received an overwhelming vote in favour in the Commons.

Trustees of the MPs pension scheme are now preparing proposals that would provide equal benefits to unmarried partners. The scheme is expected to change by October 2002.

Conference on Sexuality and Inclusion

The Institute of Education, University of London will be holding a conference entitled 'Sexuality and Inclusion'.

This day conference looks at the new responsibilities of schools and education services for ensuring the safety and welfare of lesbian, gay, bisexual and transgender pupils. It is designed to launch and set the agenda for ongoing INSET on sexual diversity issues.

Advisers: National Children's Bureau; National Healthy School Standard. Date: Monday 15 April 2002 Fee: £95 (voluntary organizations £65)

Enquiries: INSET Course 577 INSET Office Tel 020 7612 6589 Email: cpd.inset@ioe.ac.uk

ADVERTISE

your business/service with LOOKOUT!

Over 700 copies distributed in/around Notts.

Rates from £2 - £30 Phone 0115 955 5488

chrysgardener@yahoo.com

Please Mention Lookout! when replying to ads