

Are you suffering from a relationship breakdown?

## FREE 1/2 HOUR INTERVIEW

Civil Partnerships/Separation/Contact & Residence of Children,  
Property & Financial Issues upon Separation, Domestic Abuse

- Legal Aid Available
- Low Hourly Fees

Contact: Daniel Priest, Partner  
**Freephone: 0800 1071 208**  
admin@campions.co.uk

## LOW FEE CONVEYANCING

- 1st Time Buyers Discount
- Free Online Quotes
- Fixed Fees - No Hidden Extras

**HIPS**  
**AVAILABLE**

**Freephone: 0800 1071 207**  
admin@campions.co.uk

**www.campionssolicitors.co.uk**

45-49 Mansfield Road, Nottingham, NG1 3FH  
(Nr. Victoria Centre)

**FREE CAR PARKING**

Regulated by The Solicitors Regulation Authority  
Written Quotations Available on Request

Community  
Legal Service



**resolution**  
first for family law

# LOOKOUT!

**Mar Apr May 2008**

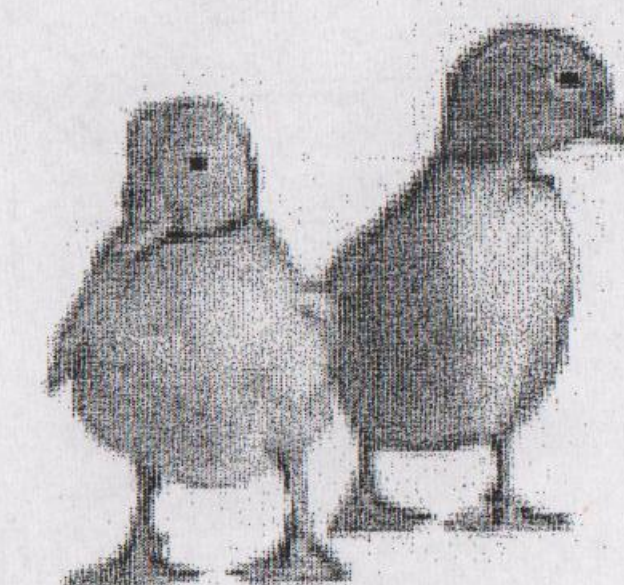
**Issue 46**

## Editorial

Easter is just around the corner so you're probably all looking forward to a bit of break from the old grindstone.

Hasn't the weather been great? Maybe lots of you have already taken advantage of this by

meeting up with one of the local walking groups. With 5 to choose from you could sample a different locality every weekend if you had a mind, or the legs, to do so. See page 6 for the forthcoming choices.



Something that never ceases to amaze me is the way that the different events that people organise attract a quite different crowd. I've recently sampled - having to steel myself to partake of hard liquor in order to bring you cutting edge news, dear reader - Hidden Talents, The Lipstick Lounge, LIRAIN (the real ale appreciation group), the Melbourne disco, the breast cancer benefit

disco in Leicester and all manner of peripheral gatherings. In fact, I think I'm heading in the right direction to apply for full membership to the exulted ranks of the Sisters of Perpetual Intoxication. Anyway, returning to the thrust of this diatribe I can now pass on to you the assurance that the lesbian community is alive and well and residing in Nottingham or thereabouts. Pages 2 & 3 have details of some forthcoming events that will enable you to sample the same delights.

Some of you may have knowledge about what the scene was like in years gone by. If this is the case you might like to share some of your experiences or memories with the newly funded Nottingham Rainbow Heritage project. See page 4 for details.

There's an opportunity to stand up & be counted by supporting our sisters who experience the rougher edge of life - see page 3. And on page 5 you'll be able to read something about the various aspects of law covered by our sponsors Campions solicitors.

### Some thanks are due

#### Melbourne Xmas Disco

It was a superb evening with friends old & new and great music with good size dance floor. We would like to say a huge thank you to the organiser who held a raffle to offset her outlay on the event and then donated the "profits" to Lookout, towards our running costs & to help keep it a free newsletter for the local lesbian community.

It went so well that 4 more dates have been booked throughout 2008.

Feb 29th, June 30th, Sept 19th & December 19th

#### LIRAIN

What a great evening out this is turning out to be!

January's meeting of Lesbians into Real Ale in Nottingham was held at the Canal House and attracted another good attendance of women from far & wide.

Plans to hold the next one at the Trip to Jerusalem have been put on temporary hold due to a clash with the disco event being held in Melbourne.

**LOOKOUT! Is sponsored by CAMPIONS SOLICITORS**



## WOMEN'S REGULAR EVENTS & SPECIAL ACTIVITIES

Women only

### DISCO

Friday 29th Feb  
7:30 – 12:00  
(Bar til 11:00)

Dancing to DJ Mandy

British Legion Hall  
Derby Road  
Melbourne

£2 entry

Full travel directions available from  
[lookoutmag@hotmail.com](mailto:lookoutmag@hotmail.com)

### Fanny's!

Women Only Night

Upstairs @ The Canalhouse Bar,  
Canal Street,  
Nottingham NG1 7EH  
(Next to Via Fossa)

Saturday 19th April 08  
8pm – 1am

Disco starts at 9pm

£5 Entry

Although this venue is upstairs, there is a lift.  
Tickets will only be available on the night.  
Any queries please email:  
[fannys.nottingham@hotmail.co.uk](mailto:fannys.nottingham@hotmail.co.uk)

## Other events

### Mad About Movies?

Then join the new Nottingham Film Group  
[uk.groups.yahoo.com/group/madaboutmovies/](http://uk.groups.yahoo.com/group/madaboutmovies/).

The idea is that we meet monthly or thereabouts, see a film (usually at the Broadway but not necessarily) and have a natter about it after. The first outing is on Saturday March 1st at the Broadway Cinema on Broad Street, Nottingham to see Margot At The Wedding.

For further information contact Lizi on  
[lizi2910@yahoo.co.uk](mailto:lizi2910@yahoo.co.uk)

Hope to see you there!

### Lipsticklounge@Niche

Hannah sent a big "thank you" to all those people who turned out on 7th Feb to see The Idolins & of course herself performing. As she said; there was a great atmosphere.

Coming up next will be the superb

**April Elizanbeth**

making her first visit here.

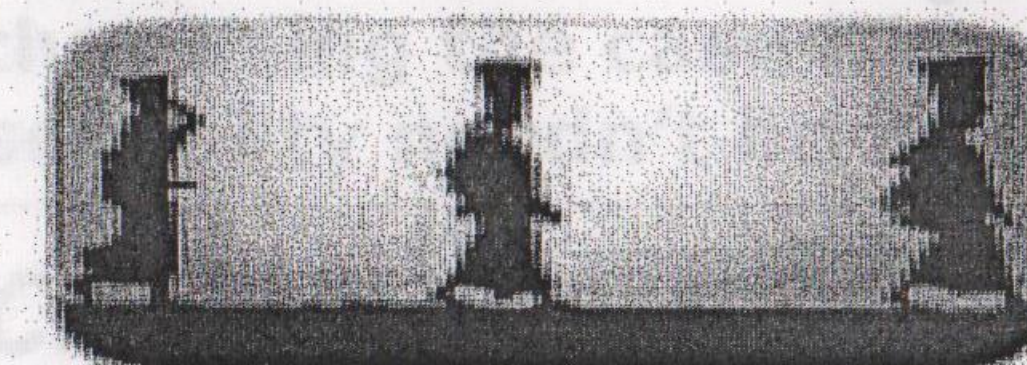
**Thurs 6th March**

**Niche**, on Huntingdon Street, Nottingham provides a great setting for this live music night. Entry is free and the drinks are regular pub prices.

Fabulous couple of nights at **Hidden Talents** in December & January which the organisers are far too modest to blow their own trumpets about. They'll have to get the sax player on the case!

**Next dates are Saturday 3rd May and Friday 11th July**

## Million Women Rise 8th March 2008



**National demonstration in London  
against violence against women to say  
ENOUGH IS ENOUGH!**

### Assemble Hyde Park 12 noon March & rally Trafalgar Square

**Bring banners, musical instruments or anything to make a lot of noise!**

Tickets for coach from Nottingham £15, £10 & £5 – you decide what you can afford to pay  
Transport also available from Chesterfield & Matlock via Unison networks.

Tel: Rahni at Roshni Asian Women's Aid 0115 9881414

For more info about Million Women Rise:

**Website:** [www.millionwomenrise.com](http://www.millionwomenrise.com)

**Email:** [rahni@roshninotts.org.uk](mailto:rahni@roshninotts.org.uk)

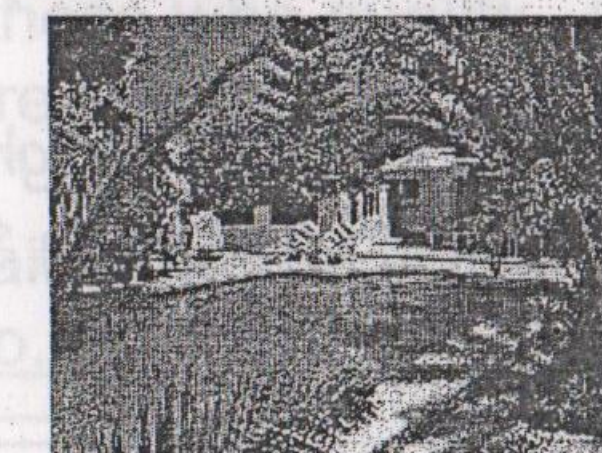
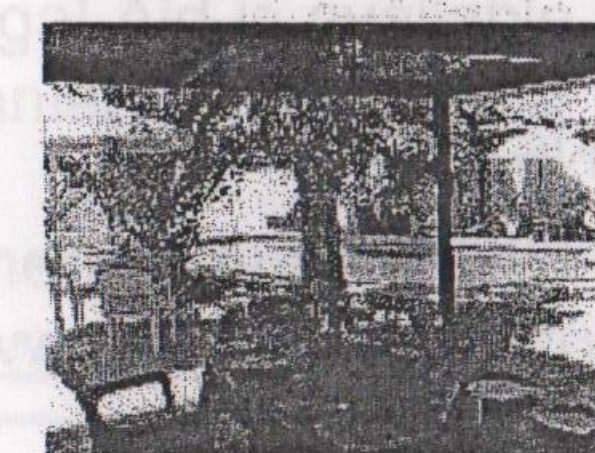
Please note this demonstration is for **women and children only**. Men wishing to show their support, please contact the White Ribbon Campaign on [www.whiteribboncampaign.co.uk](http://www.whiteribboncampaign.co.uk)

*By the time you've finished reading this flyer, another woman will have been seriously injured by her partner or ex partner*

**Violence devastates the lives of women, their children, families and their communities**

Editors note: Apologies for short entry. The statistics are appalling. Full version available. Please email.

### Casa MedSol Guest House



### Costa Blanca retreat for Gay Women

Owners Jenny & Annie offer a warm welcome

in private relaxed comfortable surroundings

Local Bars, Restaurants, Golf and Riding Stables

Enjoy lovely walks through Pine Woods, Olive Groves  
Lemon and Orange Groves.

Early bookings advisable

[www.casamedsol.com](http://www.casamedsol.com)

[info@casamedsol.com](mailto:info@casamedsol.com)

Tel +34 96 679 1005

UK 0870 720 2217

We look forward to meeting you

## L A F S

Lesbians in Ashfield

Friendship & Support

Would you like to meet other women who are lesbian, bisexual or uncertain of their sexuality? Come along to this informal group run by lesbians, for a confidential chat, gain information/support, make new friends and have fun.

**Meet last Wednesday of each month  
7.00pm–9.00pm**

**At Ashfield Womens Centre,  
Diamond Avenue, Kirkby in Ashfield**

In a safe, accessible, women only space  
To find out more details phone Cheryl or Alison on  
01623 473010 (Mon–Fri 9.30am–1.30pm)

Or leave your name & number confidentially on  
07849 798802 & Alison or Cheryl will phone back





Nottinghamshire's Rainbow Heritage  
is a three-year local LGBT History  
Project funded by the Heritage  
Lottery Foundation.

LOOKOUT!

We are literally just starting, though we have managed to organise several events for this year's LGBT History Month. On February 1<sup>st</sup> we took charge of an office in the Nottingham Voluntary Action Centre (where Women's Aid and Switchboard are also based). At the moment, we have about 40 people on our e-mail list and about 15 of those are actively involved in developing the project. We are aware that we are "lesbian-lite" and that is something which must be remedied.

The Project will involve:

- gathering oral or video records of peoples' experiences and views
- setting up displays and exhibitions across the County
- collecting memorabilia (copies or originals) e.g. photos of you and friends at LGBT events, publicity flyers for LGBT events/venues past and present, relevant newspaper cuttings, documents/newsletters/minutes of LGBT groups and organisations - for example information on former venues, groups and organisations such as Cellos, Eternity, WAG, the Lesbian Centre, Lesbian Line and inputs from current groups and organisations such as the various Women's Walking groups, Hidden Talents, LINK Notts, LIFT, Women's Badminton, Sparta, LAFS, Morrigan, Banna etc
- setting up a website
- developing a heritage trail

We are very much in the stage of trying to get people involved.

Are you interested in any of the following?

1. helping to organise the project
2. being interviewed about your views and experiences
3. providing or loaning "memorabilia"
4. just being informed about what's happening

If "yes", contact us and say which of the 4 areas interests you.

e-mail [NottsRH@hotmail.co.uk](mailto:NottsRH@hotmail.co.uk) (this is a temporary e-mail address)

Phone 0115 934 9526

Write to Nottinghamshire's Rainbow Heritage, NVAC, 7 Mansfield Road, Nottingham NG1 3FB.

Until we have set up our own website, information about the project is being posted on Switchboard's History website [www.nlgshistory.uk.com](http://www.nlgshistory.uk.com)

### Not going away for Easter?

Lucky you!

That means you can go and see the fabulous **Claire Summerskill** in her totally brand new stage show, packed full of hilarious and thought-provoking stand-up, original songs & finely drawn comedy characters.

**Saturday March 22nd**

**The Y Theatre**

**7 East Street**

**Leicester LE1 6EY**

**Tickets £10 (concessions £8)**

**For more details phone 0116 255 7066**

### Call for research participants

Do you have a same sex partner, live-in or not, or are you single, and have no plans to enter into a Civil Partnership? Would you be prepared to take part in this interesting qualitative research? Lots of details have been sent to Lookout but space is at a premium this issue. Anyone who would like to consider it further can be sent these details by emailing in the first instance to [lookout@hotmail.com](mailto:lookout@hotmail.com)

**For many years now Lookout has been fortunate enough to enjoy the sponsorship of Champions Solicitors. No doubt many of us only associate the services of a solicitor with the more drastic aspects of our lives but that being the case it's perhaps comforting to know that mentioning one's sexuality needn't be an issue that has to be overcome too.**

## CAMPIONS SOLICITORS

Campions Solicitors has been established since 1985. We are a family firm, run by four partners, Stephen Campion, Diana Frempong, Samantha Honeywood and Daniel Priest. Over the last few years, we have become a "niche" practice, concentrating on three main areas of law, Conveyancing, Family Law and Crime.

We deal with all aspects of the conveyancing process including buying, selling, remortgaging and transferring interest in property. We can also prepare a Home Information Pack if selling. We can advise about how being in a Civil Partnership can affect ownership of property. Alternatively, we advise of the rights of those living together as a couple and how those rights differ from a Civil Partnership/Marriage. We can draw up agreements that protect an interest in a property if one person's share is greater than the other. Contact us on freephone 0800 1071 207 if you wish to discuss this further.

The Government are finally starting to give same-sex couples similar rights to heterosexual couples by introducing two recent pieces of legislation, The Civil Partnership Act 2004 (which came into force in December 2005) and the Children & Adoption Act 2002 (that also came into force in 2005). The Civil Partnership Act allows a same sex relationship to be recognised by law in a similar way to marriage. The Children & Adoption Act allows same-sex couples to apply for adoption jointly in England and Wales. We will be providing more detailed advice on both these Acts in future issues of Lookout!

Unfortunately, it is a fact of life that as people are entering into Civil Partnerships eventually some of these are breaking up and the parties need the Civil Partnership legally dissolving (the equivalent to a divorce). We can provide advice in relation to the legal dissolution of Civil Partnerships and also to couples who are separating who are not in a Civil Partnership. Many issues can arise out of a relationship breakdown including contact and residence of children and how property and finances are divided. Unfortunately, there can also be issues like domestic abuse and if this arises we can help obtain an injunction to prevent further abuse. We offer a free ½ hour consultation on all Family Law matters and Legal Aid is available for those who qualify. If you wish to discuss any of these issues, please contact Daniel Priest, Partner on freephone: 0800 1071208.

There are also details about the services we offer on our website which is [www.campionsolicitors.co.uk](http://www.campionsolicitors.co.uk).

Not just a dressing gown .....

My dressing gown's a gorgeous thing  
Just looking makes my senses sing  
But stroke it with your fingertips  
Or feel it swirl around your hips  
And be transported to the stars  
Dreaming of maidens in gauzy pegnoirs.  
It's brown and plush and smooth as milk  
The lining golden, made of silk  
Cool as a stream on a summer's day  
Smelling of flowers and new mown hay.  
The pockets and belt are at optimum height

The sleeves are set in exactly right  
With a gentle drape down to the wrist  
Leaving the forearms thoroughly kissed  
It slips on like chocolate and slinks to the floor  
With a sway like a 1930's whore  
Caresses my shoulders like sun soaked peaches  
And touches parts no other reaches  
Who needs a woman when you go to bed  
With silk and velvet, all cosy, instead?  
Ooooooo luxury and voluptuousness  
For sixty pounds from M and S.

with love from floe, and thanks to pam for the title

News, articles, forthcoming events, sporting fixtures, clubs, groups and any miscellaneous items of interest for the next issue of Lookout to [lookoutmag@hotmail.com](mailto:lookoutmag@hotmail.com) by May 7th please



## Walking Groups

### NOTTINGHAM HIKING DYKES walk on the 3rd Sunday of the month.

16th March meet at Matlock Bridge (middle of Matlock on A6) GR 298602. 5 miles & a bit.  
20th April Monsal Head & Miller's Dale 7.5 miles. Riverside & field walking. Meet Monsal Head on B6465 2 miles north of Ashford in the Water.

18th May Bleasby (south of Southwell but north of river) GR 707449. Meet at Manor Farm Tea Shop between Goverton & Bleasby.

Details of these and further walks from

Lesbian and Gay Switchboard 0115 9348485 or [www.nottinghamhd.homestead.com](http://www.nottinghamhd.homestead.com)



### Derby Walking Women

**Sunday 2nd March Tissington off A515 3 miles N of Ashbourne.** 4.5 miles with lovely views.

Park for free on main village street to leave sharp at 11 or we'll be going through the Tissington

Trail car park on our way but the charge there is £2.50 for 4 hours.

(Walks are normally on the first Sunday of the month, each walk is organised by volunteer(s) and full details are given out on the walk the month before.

Details can also be obtained by contacting the overall co-ordinators on 07786 803455

or an email can be sent on via [lookoutmag@hotmail.com](mailto:lookoutmag@hotmail.com))

### North Nottinghamshire Walking Group

This is a friendly group open to all Lesbian and Bi-Sexual Women living in or near North Notts.

Walks are held on the second Sunday of each month and are generally 4-8 miles long. The walk organiser suggests that all participants bring appropriate clothing, waterproofs & footwear, and refreshments for each walk.

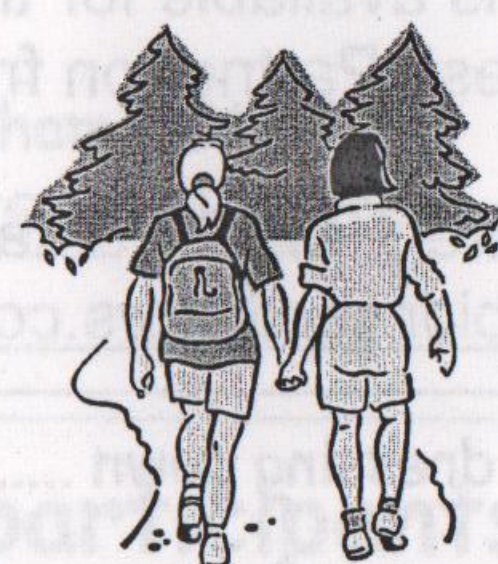
**Sunday 8th March Clipstone meet at Dog & Duck car park** (an official public car park) for a 7 mile walk over varied terrain with views of old industry, forest, riverside & farmland

Phone Jenny 07950 843820 or Julia 07961 847091 or email [nnwalkers@yahoo.co.uk](mailto:nnwalkers@yahoo.co.uk) for more details.

### SHEFFIELD HIKING DYKES

**DATES :- MARCH 9 & 23, APRIL 6 & 27, MAY 11,13 & 25**

The above details are all I have as we go to press. Contact the group direct for locations. A full & varied programme of walks throughout the year, for further details check out their website or phone Sheila (0114 2580211) or Deena (0114 2686409) or email [sheffield-hd@hotmail.com](mailto:sheffield-hd@hotmail.com)



**Ruffy Tufty** walks are for women who like walking a bit longer and faster. Routes are generally about 10 to 12 miles in the Peak District and generally on the last Sunday of the month.

The next hiking dates are Feb 23; March 29; April 26; May 24; June 21; July 5; Aug 2; Aug 30; Sept 27 Please email [jeanelle@degruchy.co.za](mailto:jeanelle@degruchy.co.za) and [vivpointon@hotmail.com](mailto:vivpointon@hotmail.com) for details of the hikes and to be put on the Peak Ruffy's mailing list

Members of Derby Walking Women are fortunate enough to have access to some 200 books covering a wide range of lesbian literature. Borrowing fee is 50p to a worthy cause.

Others might be pleased to hear that the library of at the Women's Centre has recently been dusted off & re-activated. Proof of address & ID required. Cost of borrowing is free. Open 9-4 weekdays. Contact Women's Centre first to confirm availability on 0115 941 1475

## HELP

### Nottingham Rape Crisis Centre

If you have been sexually assaulted and need help, information, or someone to talk to phone 0115 941 0440. Confidential, free and independent.

Run by women for women

### Women's Drug Service

Free and confidential service for women who use, have used or are at risk of using drugs. Tel: 01623 785 444

**Outburst!** Is an LGBT group for young people aged 11 to 25. Meet at Base 51 every Monday from 5:30 to 8pm.

Contact details

07940 761160

0115 915 882

### Nottingham Police LGBT

#### Consultation Group.

Meets every 3 months (usually at the Adams Building in the Lace Market). Representatives from local lesbian/bi groups are welcome. Details via Switchboard or the GAI Project.

**Broken Rainbow** Helpline 020 8539 9507 for lesbians experiencing abuse from their partner.

**FLAME** (Lesbians with ME support group).

Social & support group for lesbians with ME/Chronic Fatigue Syndrome meets monthly. For more details contact Morag on 0115 916 2672 or email: [morag-@ntlworld.com](mailto:morag-@ntlworld.com)

Please feel free to send us updates to this list

### Relate Nottinghamshire

The Relate counselling service is available to all adult couples experiencing problems in their central relationship, including gay and lesbian couples. Tel: 0115 950 7836.

Services include Family Counselling, Sex Therapy, Relationship Education and training courses

### Nottingham LGBT Consultation Forum

(formerly Notts LGBT Community Voice) (and before that the LGB Forum)

meets every 3 months, and can be contacted via Switchboard (0115 934 8485),

the GAI Project (0115 947 6868) or the City Council Action on Diversity Team (phone John Cowings on 0115 915 7244).

## PROPOSED CLOSURE of Victoria Leisure Centre, Sneinton

### BADMINTON

TO SUIT ALL SKILL LEVELS  
HELD IN NOTTINGHAM  
AT VICTORIA LEISURE CENTRE  
ADJACENT TO  
SNEINTON MARKET.

YOU CAN ENJOY A GAME ON  
THURSDAY EVENING 9PM-10PM  
&/or SATURDAY MORNING  
9AM-11AM.

GOOD SOURCE OF EXERCISE PLUS LOTS OF  
SPIN OFF SOCIAL ACTIVITIES WITH THIS  
FRIENDLY GROUP OF WOMEN

For more details

Contact Cate on 07757 326633  
or [lookoutmag@hotmail.com](mailto:lookoutmag@hotmail.com)  
NOW IN JEOPARDY



"The badminton club has been going for nearly 14 years. We use Victoria Leisure Centre as it is central, easy to park and easy to get there by bus. We are all shocked at this proposal and don't know where we will play if the centre does close down"

Just a couple of weeks ago we heard the shock news that Nottingham City Council is considering a rapid closure of a facility that has served the local communities of St Ann's & Sneinton for many years. It would seem that the government's current drive to get people to take responsibility for their own life chances by adopting a healthy attitude towards diet & exercise does not cut any ice with the council who dangle the dubious carrot of suggesting that the Vic will become a "key part of the major redevelopment".

Hmmmm, more flats then.

<http://www.savevictoriabaths.org.uk/>