



Are you suffering from a relationship breakdown?

FREE 1/2 HOUR INTERVIEW

Civil Partnerships/Separation/Contact & Residence of Children,
Property & Financial Issues upon Separation, Domestic Abuse

- Legal Aid Available
- Low Hourly Fees

Contact: Daniel Priest, Partner

Freephone: 0800 1071 208

admin@campions.co.uk

LOW FEE CONVEYANCING

- 1st Time Buyers Discount
- Free Online Quotes
- Fixed Fees - No Hidden Extras

HIPS
AVAILABLE

Freephone: 0800 1071 207

admin@campions.co.uk

www.campionssolicitors.co.uk

45-49 Mansfield Road, Nottingham, NG1 3FH
(Nr. Victoria Centre)

FREE CAR PARKING

Regulated by The Solicitors Regulation Authority
Written Quotations Available on Request



resolution
first for family law

Community
Legal Service



LOOKOUT!

Jun Jul Aug 2008

Issue 47

Editorial

Labelling

No, I'm not going to waffle on about the pro's & con's of how to indicate the amount of fat, salt & sugar there is in a tin of baked beans; I want to get you thinking about the other sort of labelling. Like, do you think of yourself as lesbian or gay? Personally, I think it's a great shame that we've really only got the choice of the lesbian label courtesy of the white, middle class, able bodied, male dominated, ruling think tank of 1732. At least "gay" was adopted by the rank & file in preference to homosexual. But what does gay mean now? Does it encompass every non-heterosexual option or does it primarily mean men? This isn't just a theoretical whimsie — there is a point to this. Many of you will have heard of the Switchboard (and here I'm using shorthand for the Nottingham & Nottinghamshire Gay & Lesbian Switchboard). There is currently a proposal

to change the name. One of the options is the Gay Infocentre.

Quite a few of us sat outside The Olde Trip to Jerusalem on a particularly lovely evening a couple of weeks ago, mainly to appreciate the range of real ales available there and also to catch up with the latest news, views & gossip (courtesy of LIRAIN). As you can imagine there were plenty of opinions on the use of "LGBT" vs "gay" especially in the context of people who might approach the Switchboard as part of their journey into the realisation as to why they don't readily identify with the majority of their peer group. For them, however, the labelling process possibly isn't complete so "LGBT", for example, is pretty meaningless.

What do you think?

Read more on page 5 & get the chance to voice your opinion

Nottingham Pride 2008

26 July 2008 Arboretum Park Nottingham 12 noon till 6-00pm
Nottingham Pride 2008 is a free event

List of entertainment not available but keep an eye on www.nottinghampride.co.uk

Nottinghamshire's Rainbow Heritage now has a friend called Dorothy. She's a tailor's dummy. She has decided to dress herself in an LGBT-themed T-shirt and is now in the process of pinning dozens of LGBT badges to herself. If you want to be a friend of Dorothy, you can meet her at Pride. NRH will have a marquee where you can find out more about the project and see some of the project's resources. You will be able to post your views on various issues, get an NRH keyring and a free photo of yourself and perhaps give a mini-interview. If you have any old photos, flyers and other memorabilia to donate or have copied, then contact us at Nottinghamshire's Rainbow Heritage, 7 Mansfield Road, Nottingham NG1 3FB. or nottsrh@hotmail.co.uk

LOOKOUT! Is sponsored by CAMPIONS SOLICITORS

WOMEN'S REGULAR EVENTS & SPECIAL ACTIVITIES

Women only

DISCO

Friday 20th June

7:30 – 12:00

(Bar til 11:00)

Dancing to DJ Mandy

British Legion Hall
Derby Road
Melbourne

£2 entry

Full travel directions available from
lookoutmag@hotmail.com

Hidden Talents

First off Sophie introduced Sarah & Morag, singer/songwriters, who sang 4 songs to the audience of lively women with lots of chatting to catch up on. The incidental music was as interestingly different as Sophie always manages to dish up for this venue.

Grew turned up — apologising for her lateness and regaling us with uproarious tales of what she'd been up to — & then she introduced Nina Watson who performed a Punch and Judy-esque routine with two boxing puppets hell bent on giving each other a sound thrashing.

Then, on came Natalie, aged just 19, another singer/songwriter with a belting voice. Suddenly the chattering hub-bub diminished as the audience actually sat and listened then finally erupted into well deserved appreciation after her first number. She sang a selection of her own compositions accompanying herself on keyboard with a voice mellow beyond her years. She claimed to be nervous but appeared to be oozing confidence. With talent like that I can't believe she'll stay hidden for long.

O yes, then we had two feline divas who'd travelled all the way from Devon to delight us with Rossini's Cats' Chorus. Sadly, we party pooped at this point just as the DJ cranked up the dance music, but I guess people boogied on for another couple of hours.

Not tried out Hidden Talents before? Then you're in luck

Friday 2nd July @ The Maze

Other events

Lipsticklounge@niche

GREYMATTER @ NICHE!!

We have managed to book the UK's no.1 lesbian band - Greymatter (www.greymatter-music.co.uk) - to perform at Niche on FRIDAY 18th JULY!!! You may have already seen them performing at previous Prides or at the 'An L of a Night' concert at Nottingham Playhouse last year... and they have just released their 2nd album - 'Caterpillar Tree'. We are really excited about bringing them to Niche and tickets will go on sale from Thursday 1st May onwards - £3 advance (£4 on the door) - available from the venue or online - details to follow

We will be hosting a Lipstick Lounge women's stage at Nottingham Pride this year - Sat 26th July!! Should be a fantastic day out and we hope to entertain you with a great line-up of previous Niche performers, including Sarah Bard and Eek!!

If you like the Lipstick Lounge you may also enjoy 'Girls With Guitars' @ The Wax Bar, Broad Street, Nottingham. On the 2nd Wednesday of each month Sarah Bard hosts an evening of female musicians - launching on Wednesday 14th May. For more information - www.myspace.com/girlswithguitarswax

News of a lesbian run pub in Nottingham

ROSIE O'BRIEN'S IN CARRINGTON HAS RE-OPENED UNDER LESBIAN CARE!

Rosie O'Brien's in Carrington, Mansfield Road just up from Clarendon College is now under new care and will be renamed Rosie & Linnee's of Carrington. My partner Linnee and her best friend Rosie took over the lease in January and the whole pub is in the process of refurbishment inside and outside, upstairs and downstairs.

Beer lines, pumps and bar top and the toilets have undergone a dramatic change along with both bars. For real ale buffs, Bombardier & Spitfire are current guest ales and Deuchars is also a regular feature. Batemans and Timothy Taylor are coming soon to our well-maintained cellar. We also feature a wide range of bottled beers and premium lagers and decent wines to complement our ales. Teas and coffees are also available along with sandwiches and baguettes.

MONDAY NITES ARE NOW REAL ALE NITES when guest and regular ales are on offer. TUESDAY nites have become very popular CURRY NITES featuring home cooked curries from around the Far East ~ the last couple of weeks we've had Thai Green and Malaysian Rendang. Next week is South Indian. £4 for curry, rice & a pint can't be bad!

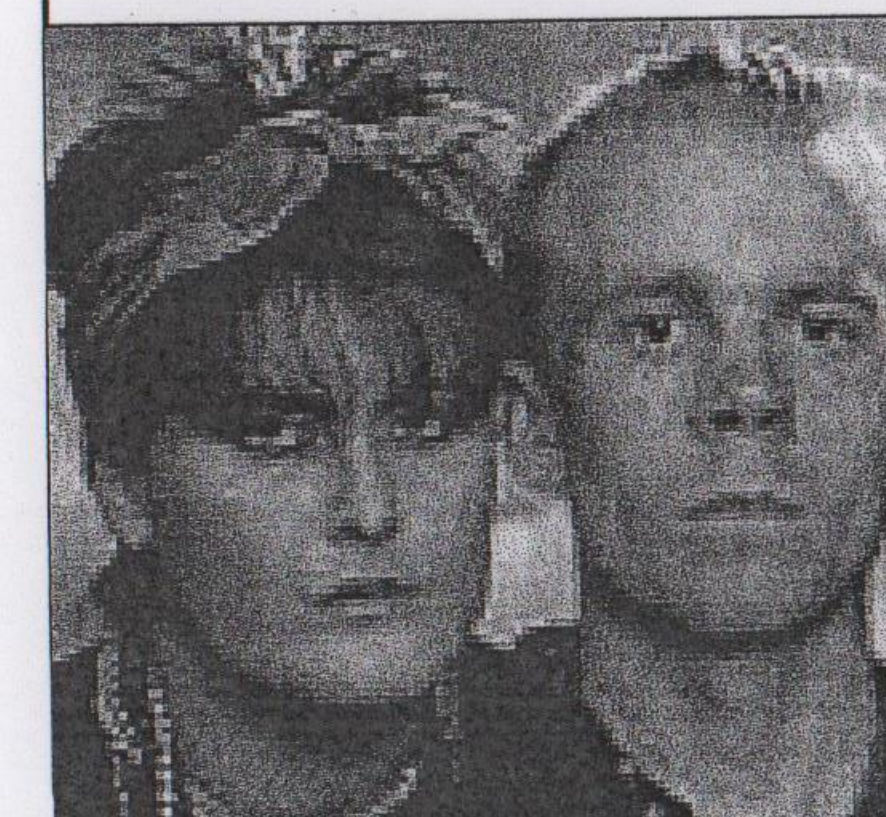
Home cooked SUNDAY ROASTS are now a popular weekly fixture too at £4.95, with a range of fresh veg and not one ping of a microwave can be heard, just the sound of satisfied eaters and drinkers.

Weekend LIVE MUSIC AND DISCOs also feature regularly. Recently we had a live Drag Act for the first time. We are always on the look-out (!) for fresh talent, so please look us up! You may well find some familiar faces....

Rosie & Linnee's at Rosie O'Brien's, 335 Mansfield Road, Carrington, NG5 2DA.
tel: 0115 962 2458

YAZOO

Vince Clarke, founder member of Depeche Mode, replied to an advertisement in 1981 placed by Alison Moyet looking for "rootsy blues musicians" and Yazoo where formed. Moyet's gorgeous soulful lament layered over Clarke's trademark synth melodies produced a series of memorable singles including, *Only You & Don't Go*. After splitting up in 1983, Vince and Alison have since gone on to have their own successful careers, Vince with Erasure and Alison as a solo performer, both releasing critically acclaimed hit albums in 2007.



Catch their 25th anniversary Reconnected tour in Nottingham on 11th June

L A F S

Lesbians in Ashfield Friendship & Support

Would you like to meet other women who are lesbian, bisexual or uncertain of their sexuality?

Come along to this informal group run by lesbians, for a confidential chat, gain information/support, make new friends and have fun.

Meet last Wednesday of each month
7.00pm—9.00pm

At Ashfield Womens Centre,
Diamond Avenue, Kirkby in Ashfield

In a safe, accessible, women only space
To find out more details phone Cheryl or Alison on 01623 473010 (Mon-Fri 9.30am—1.30pm)
Or leave your name & number confidentially on 07849 798802 & Alison or Cheryl will phone back

Your advice is sought

Four years ago Nottingham Lesbian and Gay Switchboard changed its formal name to Nottingham and Nottinghamshire Lesbian and Gay Switchboard to demonstrate that, despite our location in Nottingham, we served the whole county. Since then, some people have suggested that we expand our name to include bisexual and transgender. Our concern is that this would produce a ridiculously long and awkward name. Shortening lesbian, gay, bisexual and trans to LGBT works for many, but there are still lots of people who would not understand that acronym.

Switchboard is now more complex than it was 15 years ago. We have our own history project, we are also part of the bigger "Nottinghamshire's Rainbow Heritage" history project; we provide occasional training and produce QB newsletter. We have come to the conclusion that a completely different name for the information-giving part of our service might be timely. "Switchboard" is a very outdated term and does not take into account the fact that we deal with many contacts by e-mail and will soon start a texting service.

One possibility that we have discussed is using a term such as Gay Infocentre for the information service. We would retain Switchboard's full name for the charity itself; our website would continue to say that we provide information and support for "People who are lesbian, gay, bisexual or trans" and similar wording would appear on our literature.

We would like feedback from Lookout readers on this possible name change.
Contact notts@lgswitchboard.fsnet.co.uk or 0115 9348485

SPROUT — recycling/assisting project

Sprout was launched to help young people aged 16-25 to set up their own environmental projects, and to get involved in volunteering to help the environment.

Since January, Sprout has helped to start all kinds of projects, throughout the city. Our latest is a project set up by two young people from Sneinton, Fidel Anderson and Luke Lowles. The duo repair old i-pods, games consoles and PCs and then give or loan them to people who can benefit from them, but couldn't otherwise afford to buy them.

As well as giving more people the chance to use and enjoy such technology, Fidel and Luke also set up the project for environmental reasons.

Luke explains:

"It seems such a waste to throw old gadgets or computers away, just because they need fixing. With a little time and know-how we can repair all kinds of faults, keeping stuff off landfill sites and in people's homes instead, being used and appreciated."

The project aims to help people from all walks of life, from 18-55, including asylum seekers and refugees. Sprout has helped by finding funding for the project, as well as by giving Fidel and Luke advice and information about things like recycling, project management and marketing.

To find out more about the project, or to donate old i-pods, games consoles or PCs, please contact Jabran at the Partnership Council on 0115 970 8200.

What did you do on the first May bank holiday?

Well, a little crowd of us walkers, badminton players, friends & some family went to watch the Women's FA Cup Final, held again this year at Nottingham Forest City ground.

What a beautiful day to watch the beautiful game, being played by the fairer sex. Many of our group had never been to a football match before and I watched as they oohed and aahed over exciting wing play, good quality passing moves, excellent saves, great goals and cheered as a stalker gamely ran onto the pitch and danced a little jig in the centre circle - not a policeman in sight to escort her from this brilliant spectacle.

This truly was a wonderful escape from everyday life, almost like pantomime as cheers go up from around the ground to encourage those skilful exponents of what was, until recently, a male preserve, to do what comes just as naturally to those women competing to win the FA Cup, without the haranguing of the referee and spitting!

Drummers rhythmically began the feast of football on display prior to the emergence of Arsenal (8 times winners of the FA Cup) who were to face Leeds (very worthy opponents). Arsenal dominated the early play, bringing the crowd to the boil with some breathtaking moves, mainly culminating in some truly memorable saves from the Leeds keeper who ultimately, deservedly got the inaptly named 'man of the match' award. She was chiefly responsible for keeping the score 0 - 0 at half time. Leeds, in fact, had been unlucky to have a goal disallowed, against the run of play, for offside.

Arsenal picked up where they left off: scored 1 & then 2 in quick succession, before Leeds pulled 1 back after hitting the bar and then the following up player put the ball in the net.

A brief break in play in the second half allowed our extrovert stalker her opportunity before Arsenal closed out brave Leeds with a fourth goal.

Next year, if you're at a loose end, consider going to this event. Individual tickets at £5 were a fraction of the cost to watch male football matches & our's were less than half of that with our Group Discount and we even raised a £15 donation for Lookout.

Nottingham Bi-women's Group

The Nottingham Bi Women's Group (NBWG) has been in existence for around 15 years, and provides an opportunity for women of all ages to get together for social events. We welcome women who identify as bisexual, recognise attractions to more than one gender, are not sure, are bi-friendly, or don't care for labels anyway!

When we first started up, we met once a month in the women's centre. We also had a few weekends away at the women's holiday centre in Yorkshire, and members of the group have run "safer sex" workshops and discussion groups. These days, monthly meetings have been replaced by informal events arranged through our e-mail discussion list. These events sometimes include family and friends, and have included walks, films, picnics, pub meetings, and a "sewing circle".

To contact the group, e-mail nbwg@bi.org, visit www.nottingham.bi.org, or phone Margret on 0115 9568810

Representatives from organisations across Leicester, Leicestershire and Rutland will come together on **5th June** at a ground-breaking conference to learn more about tackling discrimination against lesbian, gay, bi-sexual and transgender (LGBT) people. Hosted by Leicester LGB Centre, 'A Life In A Day - Practical Ways to Make Your Services LGBT Friendly', will take place at Leicester City Football Club and will bring together staff from many local employers to learn practical ways of tackling prejudice and ensuring services are welcoming to all.

News, articles, forthcoming events, sporting fixtures, clubs, groups and any miscellaneous items of interest for the next issue of Lookout to lookoutmag@hotmail.com by August 7th please

Walking Groups

NOTTINGHAM HIKING DYKES walk on the 3rd Sunday of the month.

16th March meet at Matlock Bridge (middle of Matlock on A6) GR 298602. 5 miles & a bit.
20th April Monsal Head & Miller's Dale 7.5 miles. Riverside & field walking. Meet Monsal Head on B6465 2 miles north of Ashford in the Water.

18th May Bleasby (south of Southwell but north of river) GR 707449. Meet at Manor Farm Tea Shop between Goverton & Bleasby.

Details of these and further walks from

Lesbian and Gay Switchboard 0115 9348485 or www.nottinghamhd.homestead.com



Derby Walking Women

Sunday 1st June Chatsworth meet at Carlton Lees car park (£2 parking fee) next to the garden centre for a 5-6 mile walk at 10:45 for an 11 o'clock start. A beautiful walk with a short climb & then mostly flat with great views.

(Walks are normally on the first Sunday of the month, each walk is organised by volunteer(s) and full details are given out on the walk the month before.

Details can also be obtained by contacting the overall co-ordinators on 07786 803455 or an email can be sent on via lookoutmag@hotmail.com)

North Nottinghamshire Walking Group

This is a friendly group open to all Lesbian and Bi-Sexual Women living in or near North Notts.

Walks are held on the second Sunday of each month and are generally 4-8 miles long. The walk organiser suggests that all participants bring appropriate clothing, waterproofs & footwear, and refreshments for each walk.

Sunday 8th June Shireoaks meet at 11 in village hall car park for a 7 mile walk passing through fields, woodlands & canal banks. Mostly level but a couple of long, slow hills in the middle & 3 or 4 stiles.
Phone Jenny 07950 843820 or Julia 07961 847091 or email nnwalkers@yahoo.co.uk for more details.

SHEFFIELD HIKING DYKES

Wed 4th June Wentworth a couple of miles NW of Junc 35 of the M1, meet at the car park GR 388 982.

Sun 15th June Longnor meet at the Market Square car park GR 089 649.

Sun 22nd June annual long walk Roaches area 20+ miles

All walks are on Sundays and start at 10:30 unless otherwise stated.

Contact the group direct for details of locations and definitive times for evening walks.

A full & varied programme of walks throughout the year, for further details check out their

website <http://www.freewebs.com/hikingdykes/sheffield/index.html> or

phone Sandra on 01226 767179 or email sheffield-hd@hotmail.com



Ruffy Tufty walks are for women who like walking a bit longer and faster. Routes are

generally about 10 to 12 miles in the Peak District and generally on the last Sunday of the month.

The next hiking dates are June 21; July 5; Aug 2; Aug 30; Sept 27. Please email jeanelle@degruchy.co.za and vivpointon@hotmail.com for details of the hikes and to be put on the Peak Ruffy's mailing list

Members of Derby Walking Women are fortunate enough to have access to some 200 books covering a wide range of lesbian literature. Borrowing fee is 50p to a worthy cause.

Others might be pleased to hear that the library at the Women's Centre has recently been dusted off & re-activated. Proof of address & ID required. Cost of borrowing is free. Open 9-4 weekdays. Contact Women's Centre first to confirm availability on 0115 941 1475

HELP

Nottingham Rape Crisis Centre

If you have been sexually assaulted and need help, information, or someone to talk to phone 0115 941 0440.

Confidential, free and independent.

Run by women for women

Outburst!

Is an LGBT group for young people aged 11 to 25. Meet at Base 51 every Monday from 5:30 to 8pm.

Contact details

07940 761160

0115 915 882

Nottingham Police LGBT

Consultation Group.

Meets every 3 months (usually at the Adams Building in the Lace Market). Representatives from local lesbian/bi groups are welcome. Details via

Switchboard or the GAI Project.

Broken Rainbow Helpline 020 8539 9507 for lesbians experiencing abuse from their partner.

FLAME (Lesbians with ME support group).

Social & support group for lesbians with ME/Chronic Fatigue

Syndrome meets monthly. For more details contact Morag on 0115 916 2672 or email:

morag-@ntlworld.com

Please feel free to send us updates to this list

Relate Nottinghamshire

The Relate counselling service is available to all adult couples experiencing problems in their central relationship, including gay and lesbian couples. Tel: 0115 950 7836.

Services include Family Counselling, Sex Therapy, Relationship Education and training courses

Nottingham LGBT Consultation Forum

(formerly Notts LGBT Community Voice) (and before that the LGB Forum)

meets every 3 months, and can be contacted via Switchboard (0115 934 8485), the GAI Project (0115 947 6868) or the City Council Action on Diversity Team (phone John Cowings on 0115 915 7244).

Victoria Leisure Centre, Sneinton The Reprieve

BADMINTON



TO SUIT ALL SKILL LEVELS
HELD IN NOTTINGHAM
AT VICTORIA LEISURE CENTRE
ADJACENT TO
SNEINTON MARKET.

YOU CAN ENJOY A GAME ON
THURSDAY EVENING 9PM-10PM
&/or SATURDAY MORNING
9AM-11AM.

GOOD SOURCE OF EXERCISE PLUS LOTS OF
SPIN OFF SOCIAL ACTIVITIES WITH THIS
FRIENDLY GROUP OF WOMEN

For more details

Contact Cate on 07757 326633
or lookoutmag@hotmail.com

Great news

For the time being, until Xmas, as I understand things at the moment, the Victoria Leisure centre will remain open for business. This means that we are still able to welcome new members to the badminton club.

Free Indian Head Massage sessions

Monday afternoons
at the Nottingham Women's Centre
30 Chaucer Street, Nottingham NG1 5LP

Sessions last approx. 25 minutes, include upper back, shoulders, neck, head & face areas and are a great way to enhance wellbeing, help relax, deal with stress and balance the energies in the body.

Sessions can be booked through the Women's Centre reception:

Tel.: 0115 9411 475

www.nottinghamwomenscentre.com