



Are you suffering from a relationship breakdown?

## FREE ½ HOUR INTERVIEW

Civil Partnerships/Separation/Contact & Residence of Children,  
Property & Financial Issues upon Separation, Domestic Abuse

- Legal Aid Available
- Low Hourly Fees

Contact: Daniel Priest, Partner

**Freephone: 0800 1071 208**

admin@campions.co.uk

## LOW FEE CONVEYANCING

- 1st Time Buyers Discount
- Free Online Quotes
- Fixed Fees - No Hidden Extras

**HIPS  
AVAILABLE**

**Freephone: 0800 1071 207**

admin@campions.co.uk

**www.campionssolicitors.co.uk**

45-49 Mansfield Road, Nottingham, NG1 3FH  
(Nr. Victoria Centre)

**FREE CAR PARKING**

Regulated by The Solicitors Regulation Authority  
Written Quotations Available on Request



**resolution**  
first for family law

Community  
Legal Service



# LOOKOUT!

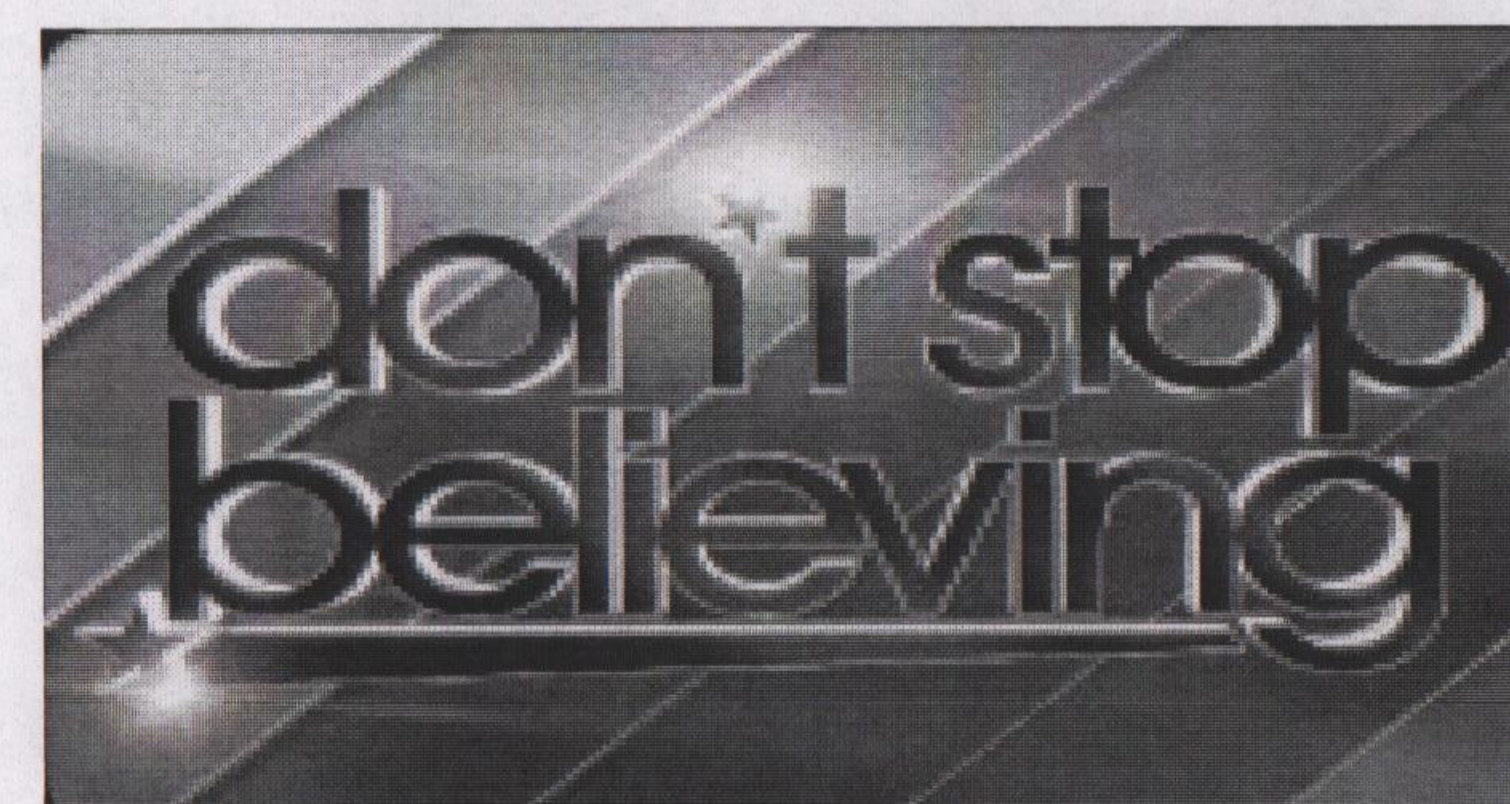
**Sep Oct Nov 2010**

Editorial

**Issue 56**

There are some house keeping gripes but they've been banished to an inside page in order to devote the front page to some worthy congratulations. Please read on.

## DaleDiva - Winners



And these "girls" didn't

They didn't stop for one moment believing if they gave it all they'd got then their joint experience would be so memorable it would be worth every second of their hard work and many hours of rehearsal.



Some readers had more reason than most to stayed glued to the Channel 5 talent show as two of the singers are also members of Derby Walking Women. In the face of stiff opposition from the lively youngsters these sassy women strutted their stuff and proceeded to demonstrate just how powerful their particular bonding could be.

Here's someone else's take on it

Well done to them as a group though, formed by inviting women around Derbyshire to express themselves through music and song. Little did they imagine that they would ever reach the dizzy heights they have.

Watching a group of middle-aged women (for the most part) join with younger and older lasses – to entertain others whilst enjoying themselves was a really invigorating show of strength for anyone who feels that life is passing them by.

We are all capable of exceeding our potential, but need to believe that it's possible, or at least not stop believing. There are women who have suffered many setbacks in their lives, who perhaps have lost their job, their partner, their child, but who still can find some additional way of expressing themselves and have the sheer determination to continue a fulfilling life. That could be you.

We probably all know women who come to a group, such as one of the walking groups, who are single and perhaps consider that they might not find a partner later in life. They have come along to walk and become part of the group, socialised with the women only to discover they have formed a close bond with not just one woman but several, one of which does lead to a relationship. So don't stop believing, never stop believing..... some of those women in the DaleDiva are, shall we say, over retirement age... and they have achieved a dream they must never have even had.

If you missed the live programmes there's a Don't Stop Believing website where you'll find the whole Grand Final plus video clips of DaleDiva dontstopbelieving.five.tv and, of course, there's stuff on utube too.

**LOOKOUT! Is sponsored by CAMPIONS SOLICITORS**

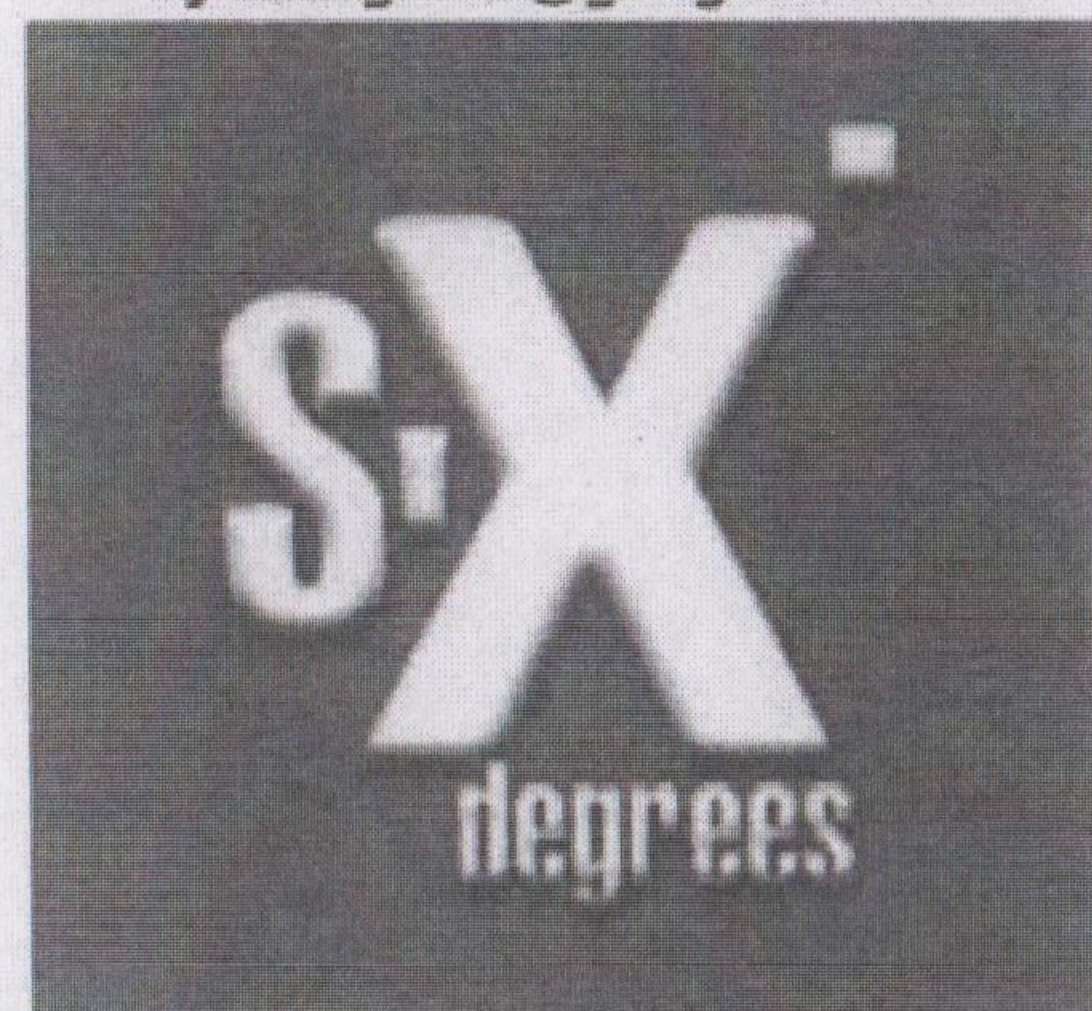
## WOMEN'S REGULAR EVENTS & SPECIAL ACTIVITIES

### WOMENS DISCO

6TH MARCH, 3RD JULY & 2ND OCTOBER  
2010

8PM - MIDNIGHT  
BELPER TOWN FOOTBALL CLUB, FREE PARKING,  
£5 ENTRANCE ON THE DOOR

EMAIL REQUESTS TO  
djsixdegrees@googlemail.com



Belper Town FC, Christchurch Meadow, Bridge Street,  
Belper, DE56 1 BA

Dyke Out Lincs (DO Lincs)

~ The social & friendship group  
for  
Lincolnshire Lesbians ~



Online website with discussions and events/  
get2gethers

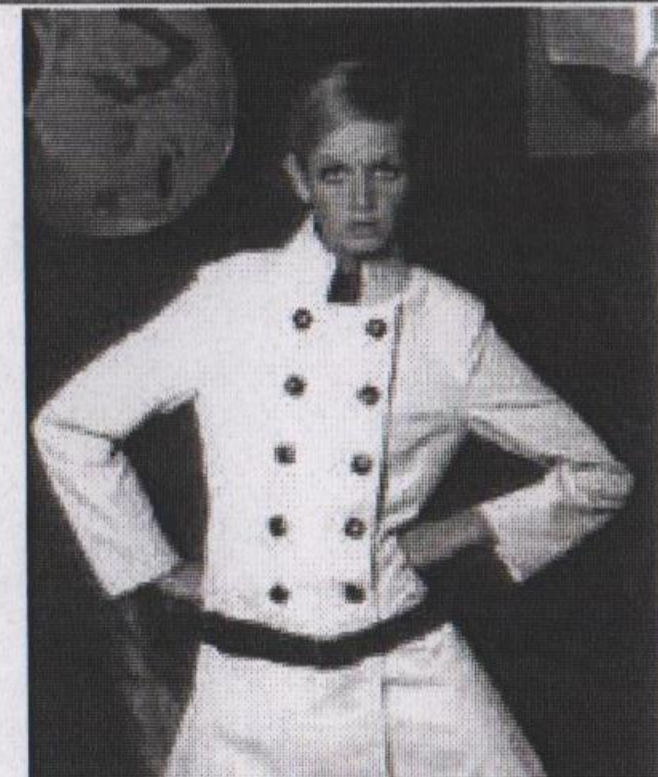
- \* Going out and meeting other Lesbians around the county & surrounding areas
- \* Chilling out at other local events
- \* And it's totally free to join!

How do we all meet up?

- \* Regular get2gethers each month
- \* Adhoc get2gethers...pubs, walks, meals, movies etc
- \* Members can add get2gethers

Come and join in...meet more people and have fun

To join Dyke Out Lincs (DO Lincs) -  
<http://dykeoutlincs.ning.com>



Women only

### DISCO

Friday 3rd Sept

60s & 70s  
theme

8pm—midnight  
(bar til 11)

Dancing to DJ Kaz

British Legion  
Hall

Derby Road  
Melbourne  
Just south of Derby

£2 on the door

Email Lookout for travel directions

The 2010 Xmas party

Dec 17

### Fanny's

Women Only Night  
Upstairs @ The Canal House  
Canal Street  
Nottingham NG1 7EH  
(Next to Via Fosse)

Saturday  
27th November

Doors open at 8pm  
Disco starts at 9pm  
£5 entry



Issue 56

PAGE 3

## Sports & Socialising

### LESBIAN, BI & TRANS WOMEN @ TENNYSON

Women @ Tennyson is a free monthly social  
group for lesbian, bisexual and trans women.

The group runs the first Wednesday of the  
month at 1 Tennyson Avenue, Chesterfield from  
7pm to 9pm.

Please call Sarah or Michaela on 01246 559431  
or email [sarah.thomasin@nhs.net](mailto:sarah.thomasin@nhs.net) for more info  
or to let us know you're coming!

#### Upcoming Events

**Wed 2nd June:** Creative Writing workshop: all  
abilities welcome!

**Wed 7th July:** "Everything you ever wanted to  
know about cervical screening but were too  
afraid to ask!"

**Wed 4th August:** Positive thinking, relaxation  
and meditation techniques

**Call now to sign up: It's free, friendly and fun!**



**support, advice, friendship and fun!**

Lots of classes starting in September

modern (Western) square dancing

All ages (teens and over) are welcome a list of teaching  
clubs can be found at [www.uksquaredancing.com](http://www.uksquaredancing.com). For  
background information, please visit [www.dosado.com](http://www.dosado.com) or  
[www.iagsdc.org](http://www.iagsdc.org)

BADMINTON  
No longer at  
VICTORIA LEISURE CENTRE

For details of  
THURSDAY EVENING  
Contact

Cate on 07796 581651

For details of  
SATURDAY MORNING  
Contact

Ruth or Rachel on



This space could be adver-  
tising YOUR event



Come along and try this out. Free taster as part of  
the Autumn Footprints walking festival.

11th September

Shipley Park Heanor

Booking required. See walking page

midlands  
nordic walking

Participants wanted

We are conducting a survey of UK lesbian, gay, bisexual  
and transgender sports, dance and games clubs, and your  
response would be appreciated.

<http://www.surveymonkey.com/s/LGBT-Sport>

We are using the data for a comprehensive listing of  
LGBT sports clubs on the new UK LGBT Sports Network  
web site, launching in November 2010, and the 2018  
London Gay Games bid. Thanks for your participation!

### LAF'S SUPPORT GROUP

Would you like to meet other women who are lesbian,  
bisexual, transgender who identify as lesbian, or  
uncertain of their sexuality - age 16 plus?

Informal group in Mansfield/North Notts areas

Come Along For A Chat

Make New Friends And Have Fun!

Now Meeting

on 2nd Tuesday  
of each month

From Tuesday 12th October  
7pm - 9pm

Lots planned -

will be at Leicester Pride,  
going bowling - lots more  
So Come And Join Us!

Call 0784 979 8802 (before 9pm)

Or email: [lafs1@hotmail.co.uk](mailto:lafs1@hotmail.co.uk)  
for details and venue

## LOCAL LIVE GIGS



Jenny Eclair

<< Back

On tour  
Only local gig — Derby  
Guildhall theatre  
27th September

2010  
October  
1st, 2nd, 3rd  
Great fun last year



### Advance notice for next year

The Justin Tournament is an event with the Justin Campaign against homophobia in football ([www.thejustincampaign.com](http://www.thejustincampaign.com)) and University of Nottingham LGBTQ Staff Network. This year's event was a football tournament between teams from across the East Midlands and we also had various stalls from other LGBT organisations.

It's official, the Justin Tournament in Nottingham will be happening again next year!

After the success of the recent tournament, next year's event will be bigger and better. Therefore we want more people to be a part of it. Looking back on this year's tournament, I identified a few areas where we need volunteers:

- Team Liaison – We need someone who will be able to relay information back to the teams, collect payments from them and make sure we have names of both the teams and the players before the event itself.
- Fixtures and scores – On the day, we need someone to make sure the correct team are on the pitch at the correct time and to take the scores.
- WE NEED REFEREE'S!!!! If you are a referee or know a referee, we need you! Our referees for 2010 were brilliant this year and refereed a lot of games in very hot weather, so for 2011 we want more volunteers to help them out.
- Advertising and marketing of the children's events – I'm really pleased that Groundworks have agreed to be part of next year's tournament, so we need someone to liaise with them and advertise out the children's activities at the event as much as possible.
- Advertising sponsorship – If you are a business or an organisation who would like to sponsor the advertising of the event, get in contact. For 2011, we want to get the message everywhere.
- Stalls – On the day we need someone to make sure all our stall holders are ok and can answer or deal with any problems they might have.

### WATCH : Nottingham Women's Centre notice board for accommodation & what's on

New address.....Banna Housing Co-op, PO Box 10020, Nottingham NG1 9GR

You can send requests for further information, donations, adverts, articles and details of social events to [lookoutmag@hotmail.com](mailto:lookoutmag@hotmail.com) or to Lookout C/o The Women's Centre, 30 Chaucer Street, Nottingham NG1 5LP.

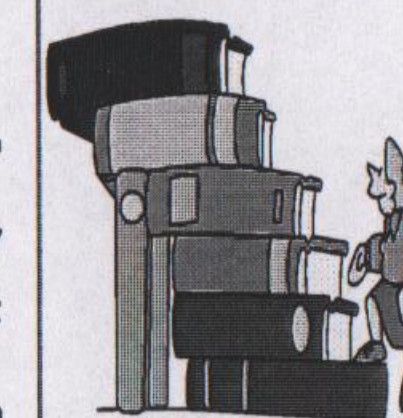
page 5

### Editorial continued

It would be really great to get more input from you, dear reader. You can do this by submitting an article on any subject. The next issue will be out at the beginning of December so surely there will be lots going on. Also, if you are moving or changing internet provider please let Lookout know either by email or by using the Women's Centre address. Although I was shocked to get 25 "return to sender" copies of Lookout that stretched back over 18 months when the mail was collected recently. Goodness only knows where they'd been storing it all. See below for an idea for a regular column.

### Parallel Looniverse

Life can be quite odd sometimes. A band of campers from one of the walking groups met recently for a weekend at Birchover and after a few drinks at a local hostelry thought it would be a spiffing idea to walk up to the 9 Ladies standing stones after dark. Upon arrival there turned out to be another band of campers complete with tents, sitting round a huge open fire and partaking of quantities of substances of a recreational nature. Here's the funny bit. Having got chatting to one of them it was interesting to find that she thought it was totally "weird" that a group of women had walked up there to have a drink, chat & look at the stars.



### Midweek Book Group

The new venue of the Canal House bar seemed to work well.

If you would like to join us please contact the group co-ordinator by joining the yahoo discussion group: from now on please check on the LinkNotts group

### Sapphist Writers

Nottingham Based Women's Writing Network

Meets Second Monday

of Every Month, 7.15pm

Nottingham Women's Centre

[sapphistwriters@yahoo.co.uk](mailto:sapphistwriters@yahoo.co.uk)

<http://sapphistwriters.blogspot.com/>

The evening at Waterstones with the 6 lesbian writers was great: I took loads of notes but now haven't got space to share them with you. A turn out of about 50 women was very encouraging so I suspect it will be bigger & better next year. We all toddled off to the Foresters afterwards to chat over drinks.

### Lesbians in Nottingham konnected:

An online community/ email group in Nottinghamshire

for lesbians to keep in touch and informed  
<http://groups.yahoo.com/group/linknotts>

### "History is herstory too"

#### Nottingham Women's History Group

Celebrate, promote and research the contribution of women to Nottingham's history

Interested in learning more about women's history?

Why not join us at our forthcoming autumn events?

**Visit to Nottinghamshire Archives**, session with Chris Weir, Senior Archivist on 'Sources of Women's History'. Learn about the wealth of information at the archives.

7 pm Tuesday 26<sup>th</sup> October 2010

Nottinghamshire Archives  
Castle Meadow Road, Nottingham, NG2 1AG.  
<http://www.nottinghamshire.gov.uk/home/leisure/archives/visitingarchives/findingarchives.htm>

**Midlands Region Women's History Network Conference - Twentieth Century Women: Culture, Media and Leisure**

10 am and 3 pm, Saturday 20<sup>th</sup> November 2010  
Stoke Campus of the University of Staffordshire, College Road, Stoke-on-Trent, ST4 2DE.  
Book direct [claire@jones5.com](mailto:claire@jones5.com) Charge applies  
Contact NWHG re lift sharing

**Reclaiming our history** – workshop on progressing (or starting) our own historical research. Self help research group – bring your ideas and questions

2 - 4pm Saturday 27<sup>th</sup> November 2010  
International Community Centre (ICC), 61b Mansfield Road, Nottingham, NG1  
<http://maps.google.co.uk/maps?hl=en&tab=wl>

#### Talks and walks planned for the New Year

For further information and to join our mailing list contact Nottingham Women's History Group

email [mocooper@yahoo.co.uk](mailto:mocooper@yahoo.co.uk)

Tel Mo 07950 472022 or  
Val 0115 941 9186

News, articles, adverts, forthcoming events, sporting fixtures, clubs, groups and any miscellaneous items of interest for the next issue of Lookout to [lookoutmag@hotmail.com](mailto:lookoutmag@hotmail.com) by Aug 7th please

## Walking Groups

### NOTTINGHAM HIKING DYKES walk 3rd Sunday of the month at 10:30.

19th Sept meet at the Talbot pub Belper DE56 2UA : 7 miles along the Derwent & up to Alport Stones then back afterwards to Belper River Gardens for tea &/or ice cream  
No details beyond September at the moment but keep an eye on Linknotts or the following websites [www.nottinghamhd.homestead.com](http://www.nottinghamhd.homestead.com) or [www.peakhd.webs.com](http://www.peakhd.webs.com) or ring Lesbian and Gay Switchboard 0115 9348485



### Derby Walking Women

Walks are normally on the 1st Sunday of the month, each walk is organised by volunteer(s) and full details are given out on the walk the month before.

**Sunday 5th Sept meet at The White Post, Stanley, DE73 7HW**

5 miles across green & pleasant land with a few stiles & little footbridges

**Sunday 3rd Oct meet in Osmaston - park on the road in front of the church**

Details can also be obtained by contacting the overall co-ordinators on 07786 803455 or an email can be sent on via [lookoutmag@hotmail.com](mailto:lookoutmag@hotmail.com)

### North Nottinghamshire Walking Group

This is a friendly group open to all Lesbian and Bi-Sexual Women living in or near North Notts.

Walk on the second Sunday of each month and are generally 4-8 miles long. The walk organiser suggests that all participants bring appropriate clothing, waterproofs & footwear, and refreshments for each walk.

**Sun 12th Sept 11.00am - Bothamsall 5 miles:** Meet at Tesco's car park in New Ollerton for a 5 mile walk with choice of ice cream parlour or pub afterwards.

Phone Julia 07961 847091 or email [nnwalkers@yahoo.co.uk](mailto:nnwalkers@yahoo.co.uk) for more details.

**SHEFFIELD HIKING DYKES** All Sunday walks start at 10:30 unless otherwise stated. Contact the group direct for details of locations and other walks. A full & varied programme of walks throughout the year, for further details check out their website <http://hikingdykes.webs.com/sheffield/> or phone Deena on 0114 268 6409 or Sandra on 01226 767179 or email [sheffield-hd@hotmail.com](mailto:sheffield-hd@hotmail.com)

12th September: 10.30am start - Bradford and Lathkill Dales, 8 miles Meet at the car park at Over Haddon GR SK 203 665

26th September: 10.30am start - Crowden: 8 miles Meet at the Crowden car park GR SK 073 993

3rd October: 10.30am start, (with breakfast from 9.30am) - Grindleford Cafe and Burbage: 8 miles Meet at Grindleford Cafe beside Grindleford Train Station GR SK 250 788



**Peak Rufty walks:** Future Peak Ruffies walk dates: September 25<sup>th</sup>, October 30<sup>th</sup>

**Peak Ruffies** are for women who like walking longer and faster and over more challenging ground. Hikes are usually about 10 to 14 miles in the Peak District on the last Saturday of the month. When you join us for a walk, please ensure you have appropriate walking gear – boots, waterproofs and warm clothing – and carry sufficient food and drink for a full day in the hills.

For further information contact [jeanelle@degruchy.co.za](mailto:jeanelle@degruchy.co.za); to sign up to the Peak Ruffies yahoo group email: [peakruffies-subscribe@yahoogroups.com](mailto:peakruffies-subscribe@yahoogroups.com)

**Autumn Footprints** is the Amber Valley & Erewash Walking Festival. Walks for everyone from 11th to 26th September. A total of 33 walks or walk related events. Booking may be required.

For more details go to [www.gdd.org.uk](http://www.gdd.org.uk)

<http://peakhd.webs.com/walks.htm>

Here it is : one web site with ALL the walking group dates in calendar format



## HELP — updated from The Gay Guide

### Nottingham Rape Crisis Centre

If you have been sexually assaulted and need help, information, or someone to talk to phone 0115 941 0440. Confidential, free and independent. Run by women for women

### Women's Drug Service

Free and confidential service for women who use, have used or are at risk of using drugs. Tel: 01623 785 444

### Outburst!

Is an LGBT group for young people aged 11 to 25. Meet at Base 51 every Monday from 5:30 to 8pm.

Contact details  
07940 761160  
0115 915 2882

### Nottingham Police LGBT Consultation Group.

Meets every 3 months (usually at the Adams Building in the Lace Market). Representatives from local lesbian/bi groups are welcome. Details via Switchboard or the GAI Project.

**Broken Rainbow** Helpline 020 8539 9507 for lesbians experiencing abuse from their partner.

**FLAME** (Lesbians with ME group) Support & social group for lesbians with ME (Chronic Fatigue Syndrome) contact Self Help Team, Ormiston House, 32-36 Pelham St. 0115 911 1661 or Morag on 0115 916 2672 or email: [morag@ntlworld.com](mailto:morag@ntlworld.com) or [nottslesbiancentre@ntlworld.com](mailto:nottslesbiancentre@ntlworld.com)

### Relate Nottinghamshire

The Relate counselling service is available to all adult couples experiencing problems in their central relationship, including gay and lesbian couples. Tel: 0115 950 7836.

Services include Family Counselling, Sex Therapy, Relationship Education and training courses

### Nottingham LGBT Consultation Forum

(formerly Notts LGBT Community Voice) (and before that the LGB Forum)

meets every 3 months, and can be contacted via Switchboard (0115 934 8485), the GAI Project (0115 947 6868) or the City Council Action on Diversity Team (phone John Cowings on 0115 915 7244).

## Tipping the Velvet

Advice for women who have sex with women. Advice & help with sexual health, drug use, domestic violence, etc. Service is free & open to women of all ages. For more info contact Donna. The Health Shop, 12 Broad Street, Hockley, Nottingham NG1 3AL or 0115 947 5414 or [healthshop@nottinghamcity-pct.nhs.uk](mailto:healthshop@nottinghamcity-pct.nhs.uk)

## Nottingham & Nottinghamshire Lesbian & Gay Switchboard

Confidential info, advice & support from trained volunteers.  
C/o VAC, 7 Mansfield Road, Nottingham NG1 3FB  
0115 934 8485 or 01623 621 515 Mon - Fri 7.00 - 9:30 pm  
Email : [notts@lgswitchboard.fsnet.co.uk](mailto:notts@lgswitchboard.fsnet.co.uk) Website: [www.nottslgs.org.uk](http://www.nottslgs.org.uk)

## Domestic violence within Lesbian and Bisexual relationships

**Roshni Community Outreach service for ALL women 0115 988 1414**

Monday to Thursday: 9-5 pm Friday: 9-4.30 pm

**Broken Rainbow helpline 08452 60 44 60**

Monday: 2 - 8pm Wednesday: 10 - 1pm Thursday: 2 - 8pm

**24 hour Freephone Domestic Violence help-line 0808 800 0340**

## Lesbian Parenting Group

Singles or couples, with children looking for support, information exchange and socialising, then leave contact details with Switchboard so we can assess local interest.

Contact us by e-mailing [notts@lgswitchboard.fsnet.co.uk](mailto:notts@lgswitchboard.fsnet.co.uk) or phone 0115 9348485 (Monday to Friday 7-9pm)