



Are you suffering from a relationship breakdown?

## FREE ½ HOUR INTERVIEW

Civil Partnerships/Separation/Contact & Residence of Children,  
Property & Financial Issues upon Separation, Domestic Abuse

- Legal Aid Available
- Low Hourly Fees

Contact: Daniel Priest, Partner  
**Freephone: 0800 1071 208**  
admin@campions.co.uk

## LOW FEE CONVEYANCING

- 1st Time Buyers Discount
- Free Online Quotes
- Fixed Fees - No Hidden Extras

**HIPS  
AVAILABLE**

**Freephone: 0800 1071 207**  
admin@campions.co.uk

**www.campionssolicitors.co.uk**

45-49 Mansfield Road, Nottingham, NG1 3FH  
(Nr. Victoria Centre)

**FREE CAR PARKING**

Regulated by The Solicitors Regulation Authority  
Written Quotations Available on Request



# LOOKOUT

**Jun Jul Aug 2011**

**Issue 59**

It's not often I'm in the position of having to decide whether to tell you about anything other than as many choices of fun social gatherings as I can muster together. However, just before Easter I learned of the sudden demise of a charming, caring, all round lovely woman who many Lookout readers may have bumped into at various times. There follows some thoughts from a few of her best friends.

## In celebration of Angela Extall (1943 -2011)

Many of her friends will have first met Angela at the Women's Centre from 1993. She especially enjoyed WAG (Women are Gorgeous - or Women's Action Group for funding purposes!) a Friday night lively social group.

Angela retired early at 54 after a career first in the RAF and then the DHSS. She wanted to contribute to the community and volunteered for 5 years with Gay Switchboard.

She was full of life with many interests. Angela enjoyed watching football, supporting Derby County; she was enthusiastic about tennis and snooker. She regularly went to the gym and also swam. She played Rummi Cub with friends in a spin off from the WAG Group. A real ale fan and quiz enthusiast she enjoyed quizzes at the Willow Tree pub in West Bridgford on a Wednesday night as well as elsewhere and privately with friends.

Sadly Angela died suddenly at her home on 19 April, her funeral was well attended by friends and family. A caring, enthusiastic and non-judgmental person Angela was a loyal friend and good listener. She will be very much missed by her many friends and remembered for her beaming smile, bright blue eyes, hearty laugh and cheeky pigtail.



From her many friends who knew and loved her

Angela joined Nottingham Lesbian & Gay Switchboard in 2004 in a training programme which, that year, had 7 female and 6 male newcomers participating in the training. Angela was the only woman out of those 7 to finish the course and become a fully-fledged operator. She was a great asset to the helpline, with her warm friendly voice and ability to put people at their ease. She regularly attended Switchboard's monthly meetings as well as any social events which were organised.

For Angela, I think Switchboard was a new 'start in life', and one which brought her into contact with many others, either by helping callers on the other end of the telephone line or in regular contact with her colleagues on the helpline. Because operators had to make use of a computer, Angela decided to obtain a computer for herself and master its intricacies - yet another new 'start in life' for her. I remember I went to her house on one occasion to show her how something worked - she was ever the learner!

It was with sadness that we accepted Angela's resignation in 2009, but understood that this was mainly due to health problems. Angela continued to meet myself and 2 other Switchboard operators for the occasional Chinese meal at the Big Wok (now defunct) or May Sum, followed by a drink (or two) at a gay hostelry! The 50+ people who packed The Holy Rood Church at Edwalton on May 11th showed how much Angela was loved by her friends, and the photo on the cover of the order of service rightly shows a smiling Angela - the one we will remember.

Tony Barker

**LOOKOUT! Is sponsored by CAMPIONS SOLICITORS**



## WOMEN'S REGULAR EVENTS & SPECIAL ACTIVITIES

### WOMENS DISCO

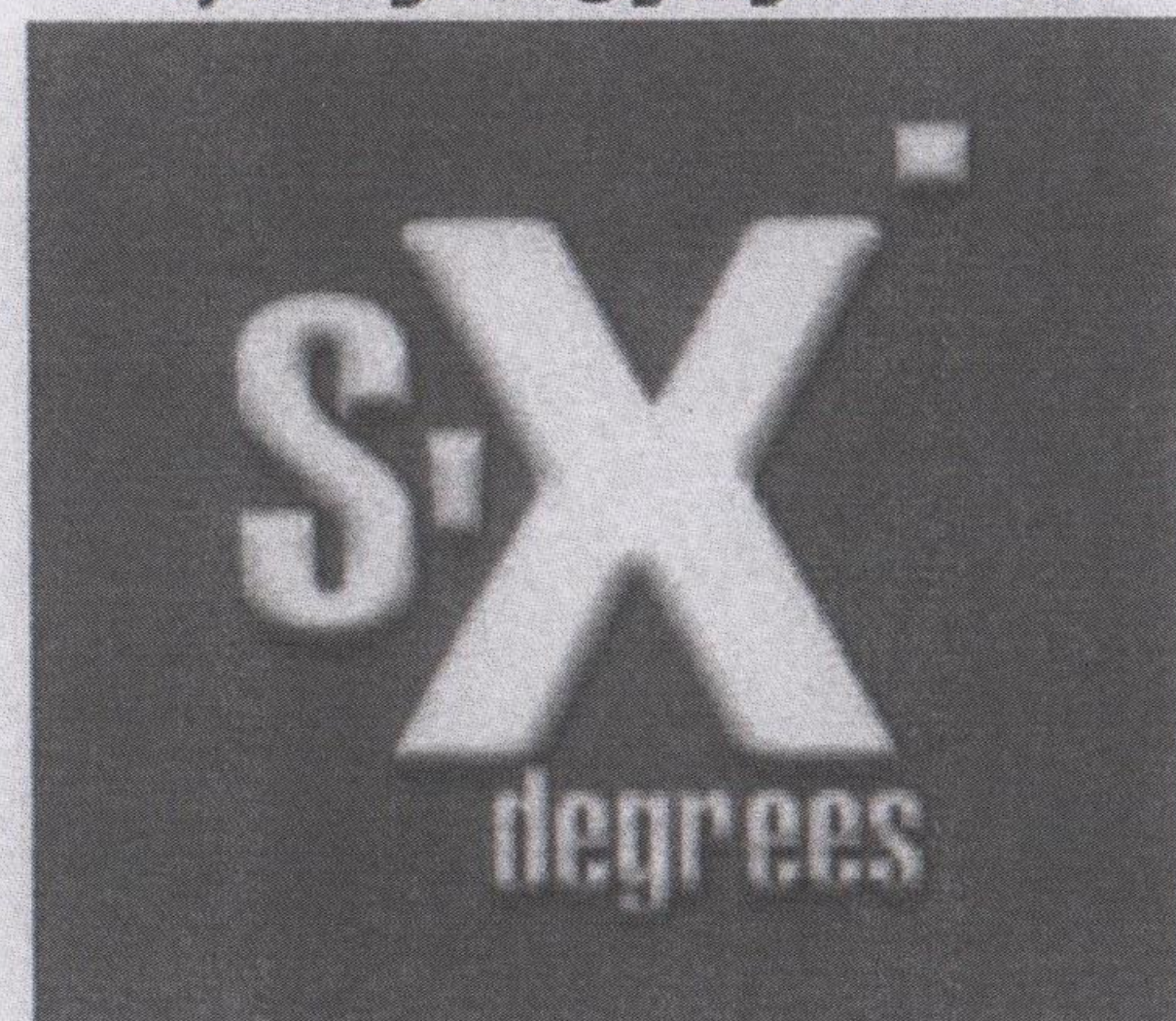
11th June 2011

Next date 15th October

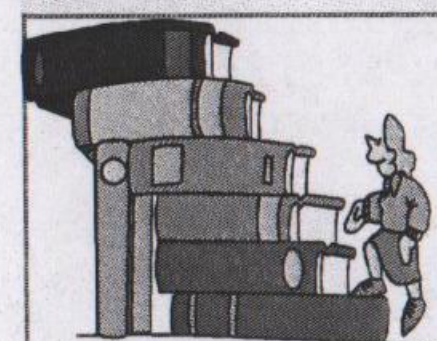
8PM - MIDNIGHT

BELPER TOWN FOOTBALL CLUB. FREE PARKING.  
£5 ENTRANCE ON THE DOOR

EMAIL REQUESTS TO  
djsixdegrees@googlemail.com



Belper Town FC, Christchurch Meadow, Bridge Street,  
Belper, DE56 1BA



### Midweek Book Group

Read a set book and then join in  
with the discussion group

Meeting at 7:30 Canalhouse Bar

18 May: Notes from an Exhibition Patrick Gale  
29 Jun: Room Emma Donaghue &/or I am David Ann Holm  
27 Jul: The Carhullan Army Sarah Hall  
7 Sep: Disobedience Naomi Alderman

If you would like to join us please contact the group co-ordinator by joining the yahoo discussion group: from now on please check on the LinkNotts group email facility

### Sapphist Writers

Nottingham Based Women's  
Writing Network

Meets Second Monday  
of Every Month, 7.15pm

For more info email  
sapphistwriters@yahoo.co.uk  
<http://sapphistwriters.blogspot.com/>

### Lesbians in Nottingham konnected:

An online community/ email group in  
Nottinghamshire  
for lesbians to keep in touch and informed  
<http://groups.yahoo.com/group/linknotts>

Dyke Out Lincs (DO Lincs)

~ The social & friendship group  
for

Lincolnshire Lesbians ~



Online website with discussions and events/  
get2gethers

- \* Going out and meeting other Lesbians around the county & surrounding areas
- \* Chilling out at other local events
- \* And it's totally free to join!

How do we all meet up?

- \* Regular get2gethers each month
- \* Adhoc get2gethers...pubs, walks, meals, movies etc
- \* Members can add get2gethers

Come and join in...meet more people and have fun  
To join Dyke Out Lincs (DO Lincs) -

<http://dykeoutlincs.ning.com>

*Nottinghamshire Pride Grand Gala*  
Wednesday 1st June  
The Council House  
Old Market Square  
Nottingham  
7:30pm til Late  
£12 a ticket  
OR  
£100 for a table  
Pimm's Reception,  
Canapé's, Live Cabaret, Fun & Games  
Formal Attire, Suite's or Drag  
Sponsored by **e-on** For tickets contact: **07806610119** **pride**

Pride July 30th Forest Rec Ground

Check out details on Facebook

## Sports & Socialising

### LESBIAN, BI & TRANS WOMEN @ TENNYSON

Women @ Tennyson is a free monthly social group for lesbian, bisexual and trans women.

The group runs the first Wednesday of the month at 1 Tennyson Avenue, Chesterfield from 7pm to 9pm.

Please call Sarah or Michaela on 01246 559431 or email [sarah.thomasin@nhs.net](mailto:sarah.thomasin@nhs.net) for more info



**support, advice, friendship and fun!**

Programme of talks for June, July & August meetings



### WOMEN'S BADMINTON

PORTLAND LEISURE CENTRE

Newcomers please check for details

THURSDAY EVENING

Contact

Cristina on 07903 943064

For details of SATURDAY MORNING Contact  
Ruth or Rachel on 0115 982 6952

### Lezzie Family Group

The Group continues to meet on the first Saturday of the month at Stonebridge City Farm, St Ann's, Nottingham middayish. We are a small group with mainly young kids 0-8 but happy to welcome older kids and mums/grans/aunties of all sorts. The kids are black, white, boys, girls, fostered, adopted, with donor's help or home made. The farm is free, has a few animals, a small play area, café and gardens. We sometimes arrange to meet at other places too.

Meetings June 4th, July 2nd, Aug 6th

Ring to check us out first if you like

Judi 07888657916

### LAF'S SUPPORT GROUP

Would you like to meet other women who are lesbian, bisexual, transgender who identify as lesbian, or uncertain of their sexuality - age 16 plus?

Informal group in  
Mansfield/North Notts areas

Come Along For A Chat  
Make New Friends And Have Fun!

Now Meeting  
on the last Thursday  
of each month

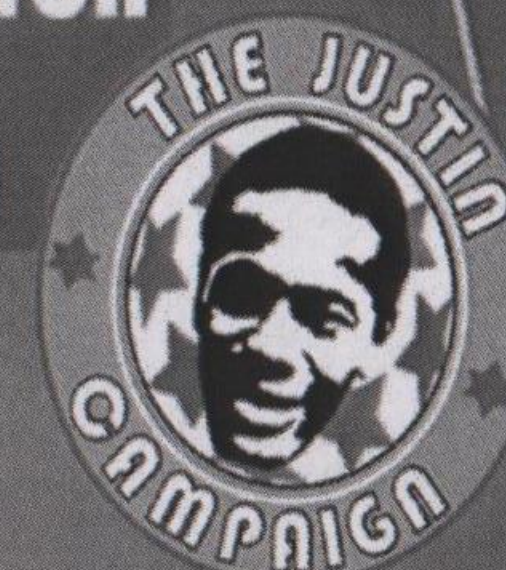
From Thursday  
27th January 2011  
7pm - 9pm

**So Come And Join Us!**

Call 0784 979 8802 (before 9pm)  
Or email: [lafs1@hotmail.co.uk](mailto:lafs1@hotmail.co.uk)  
for details and venue

### THE JUSTIN CAMPAIGN TOURNAMENT NOTTINGHAM 2011

SATURDAY 2ND JULY  
10.30AM-4.30PM



WITH SPECIAL GUEST JOHN AMAECHI

UNIVERSITY OF NOTTINGHAM SPORTS CENTRE,  
UNIVERSITY PARK, NOTTINGHAM.

[NOTTINGHAM.EVENTS@THEJUSTINCAMPAIGN.COM](mailto:NOTTINGHAM.EVENTS@THEJUSTINCAMPAIGN.COM)  
[WWW.THEJUSTINCAMPAIGN.COM](http://WWW.THEJUSTINCAMPAIGN.COM)



The University of  
Nottingham

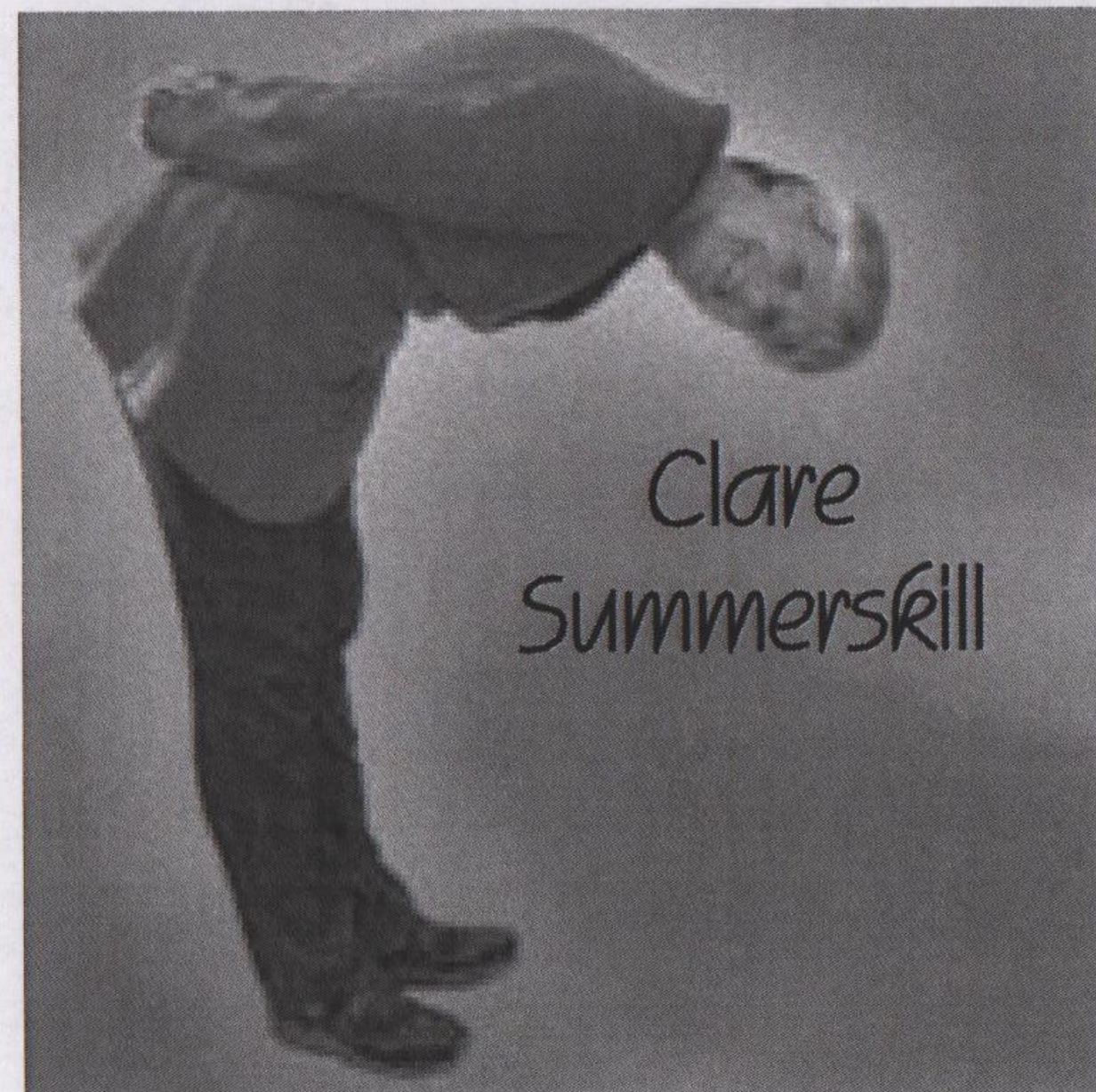


UNITED KINGDOM • CHINA • MALAYSIA



## LOCAL LIVE GIGS

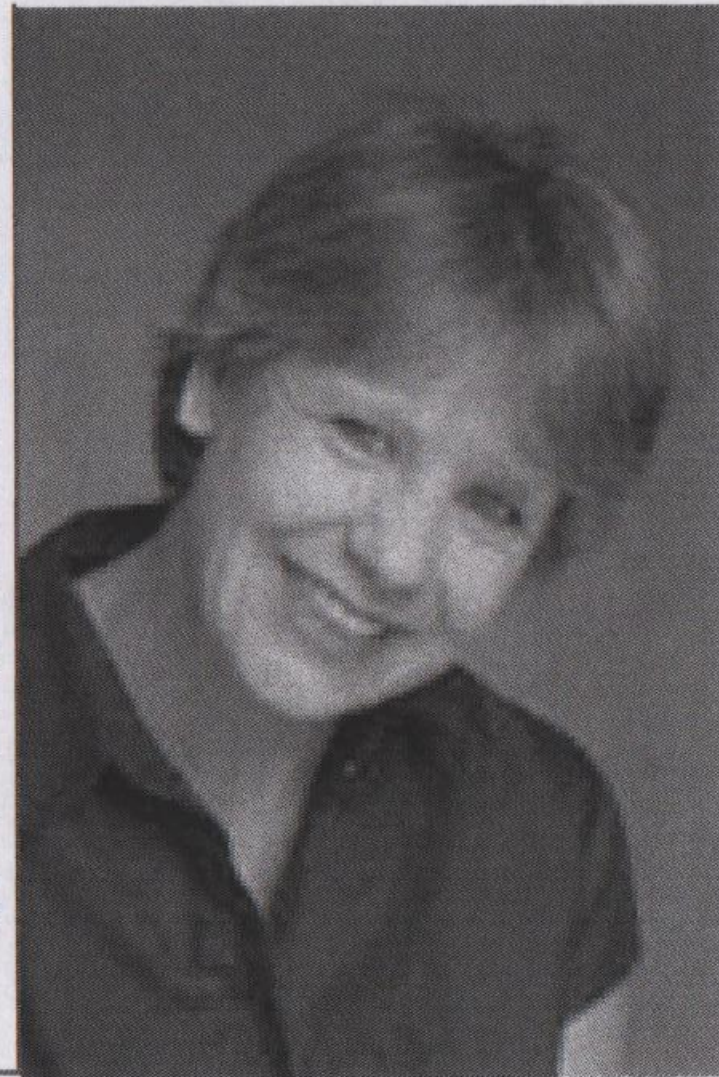
Friday 17th June at Nottingham Playhouse Studio.



Clare  
Summerskill

It's a one night stand you'll never forget!

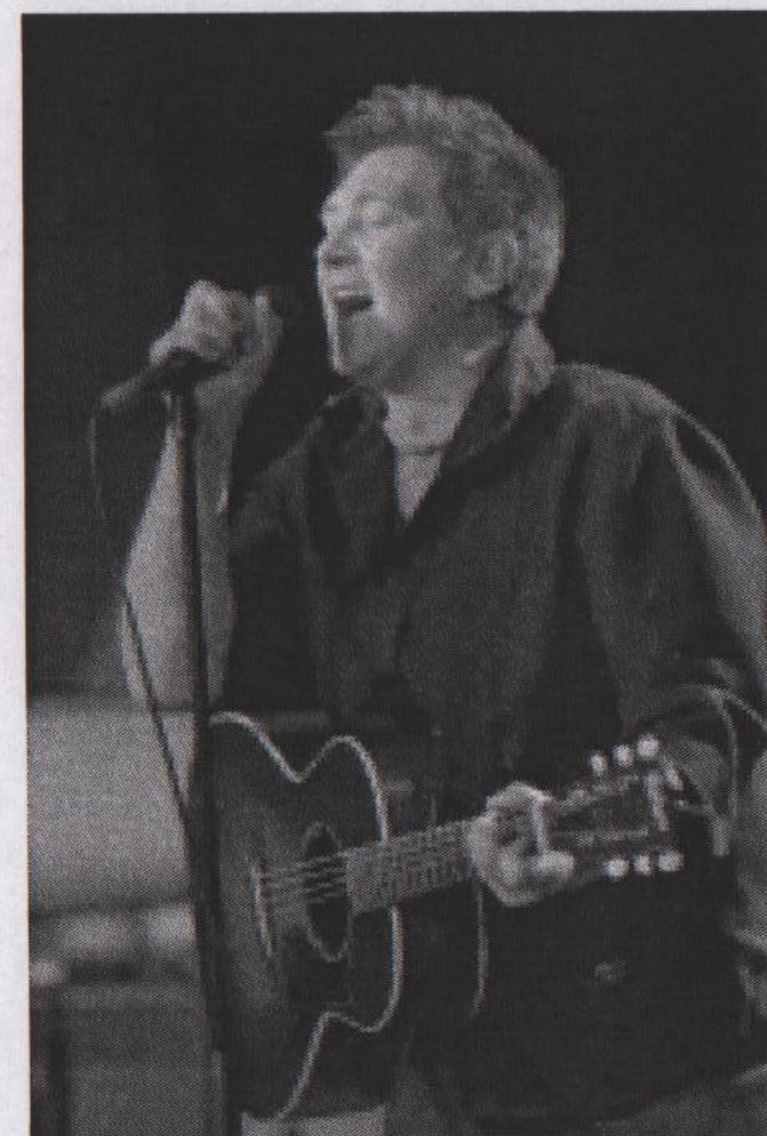
Let's talk about being Single, Married, being Bi, Gay, Lesbian, Straight and those who see themselves as just a little bit on the wonky side...Everything you've ever wanted to know about all these subjects but were too afraid to ask....in case someone gave you a funny look. All is finally explained and revealed by lesbian actress/singer/stand-up, CLARE SUMMERSKILL who, in this new show, will take you through a fast-moving, song-singing, side-splitting, costume-changing evening of comedy and music.



Let's talk about Sex! Sexual Orientation! Relationships!

### k d lang & the Siss Boom Bang

Lang spent much of the last decade struggling with writer's block – 2008's *Watershed* was her first self-penned collection in eight years – but you'd never guess from *Sing it Loud*. This warm, fluid collection of jazz and country-flecked songs brims with confidence. Her band, the Siss Boom Bang, supply classy accompaniment and co-writing credits, and a cover of Talking Heads' "Heaven" shakes off New York jerkiness for Nashville's easeful grooves. But Lang presides effortlessly here and if she rarely pushes her voice to full throttle, it's as much of a joy to hear her purr along smoothly.



Nottingham  
Concert Hall  
4th June 2011  
7:30

## LOCAL SERVICES

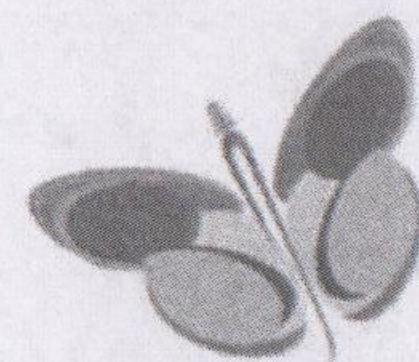
Is it time for you to take that first step to big change?

### Denise Greenfield Garden Maintenance

Regular border maintenance  
Lawns & hedges  
Fence & decking treatment  
Clearance of overgrown land

Tel: 0115 9780918  
Mobile: 07950 185442  
Email: denisegreenfield@talktalk.net

Are things in the garden of  
life not blossoming as well  
as they might?



Derbyshire Divorce Coach &  
Family Law Consultant  
A positive, future based process,  
enabling you to take small steps to  
big changes.  
Amanda Johnson  
01332 781925 / 07793 862444  
www.derbyshiredivorcecoach.co.uk

You can send your own reviews, requests for further information, donations, adverts, articles and details of social events (by 7th August please) to [lookoutmag@hotmail.com](mailto:lookoutmag@hotmail.com) or to  
Lookout C/o The Women's Centre, 30 Chaucer Street, Nottingham NG1 5LP.

## Lesbian Authors at Waterstones 23 - 24 July

Start Pride week off right!

Saturday July 23<sup>rd</sup> and Sunday July 24<sup>th</sup>  
Waterstones off Market Square, Nottingham

The 2<sup>nd</sup> annual Bold Strokes Books Bash will be in full swing again this year. Join 10 lesbian authors for a weekend of steamy romance, hectic history and fantastic fantasy! The authors will be reading from their latest novels and answering your questions in the Sillitoe room on the 4<sup>th</sup> floor of Waterstones. After, join us for a Meet and Mingle at the Lord Roberts to rub shoulders with some award winning lesbian authors!

On Sunday morning we will be holding a *How to Get Published* brunch. A panel of authors and editors will answer your questions about the process, what it's like, how long it takes, and pretty much anything else you can think of! Coffee and cakes provided, so bring your questions and notepads!

Last year we had a great turnout, and we'd love to see even more people this year, so bring along your friends and start Pride off with some literary lesbians!

Saturday: 3:00-5:30.

Panel 1: Some Like it Hot

Panel 2: Build it and They Will Come

Sunday: 11:30am

Publishing Brunch: How to Get it Published, Q&A

Bold Strokes Books is the largest publisher of LGBTQ books in the world, and we are fortunate to have such a large contingent of UK based authors, including Rebecca S Buck, our very own Nottingham based author! We believe that all people in the LGBTQ community should have access to books about people like us, for pleasure, for knowledge, for the sake of knowing we aren't alone. Not to mention, they're a damn good read!

If you have any questions, please contact Victoria at [bsbediting@gmail.com](mailto:bsbediting@gmail.com) or go to [www.boldstrokesbooks.com](http://www.boldstrokesbooks.com)

### Birmingham Gay Symphony Orchestra and BGSO Pride Proms Chorus

take you through an evening of Great British Music  
to celebrate

Birmingham Pride 2011

Date & Time: Saturday 11<sup>th</sup> June, 7pm

Venue: Adrian Boulton Hall, Paradise Place, Birmingham, UK

Mix and mingle with the orchestra and your fellow audience members at our fabulous after-show party.

Rainbow flags and Union flags essential!

A great night out, a party atmosphere and fabulous music guaranteed.

## Nottingham Women's History Group

Over the last few years the Nottingham Women's History Group have been running very popular walks around Nottingham highlighting the lives of women – both famous and unknown. We have now published the walk as a FREE A5 size, 16 page booklet, so that women can follow the walk at their own convenience. You can get a copy of the walk any of these ways:

E mail [nottmwomenshistory@googlemail.com](mailto:nottmwomenshistory@googlemail.com) and we'll send you the booklet as a PDF (Adobe)

Down load from the web site  
[www.nottinghamwomenshistory.org.uk](http://www.nottinghamwomenshistory.org.uk) (this will be available soon)

Look out for it at libraries around the city and Nottingham Women's Centre

Send a stamped addressed A5 size envelope (33p stamp) to

Nottingham Women's History Group 25  
Cavendish Vale, Nottingham, NG5 4DS

For more information contact Mo on 07950 47202  
[nottmwomenshistory@googlemail.com](mailto:nottmwomenshistory@googlemail.com)

## Property For Sale



MAIN STREET, BOTHAMSALL  
3 Bedroom Cottage / Period House  
New Price £199,950

This BEAUTIFUL COTTAGE IN THE RURAL AND PICTURESQUE VILLAGE OF BOTHAMSALL WAS BUILT IN 1888 and has many ORIGINAL FEATURES including original doors and quarry tiles. The property further benefits from LPG CENTRAL HEATING, DOUBLE GLAZING THROUGHOUT AND AN ALARM SYSTEM. The accommodation extends to kitchen, utility, cloakroom, two reception rooms, THREE BEDROOMS, bathroom and GARDENS TO THE FRONT AND REAR. Viewing is essential to fully appreciate the size, character and charm of this property.



## Walking Groups

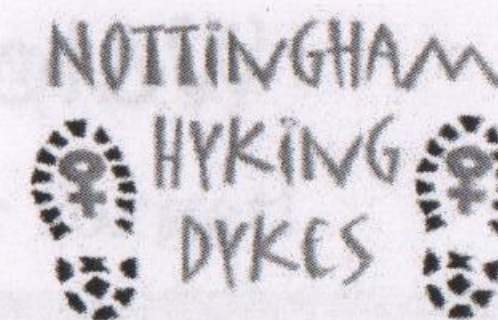
### NOTTINGHAM HIKING DYKES walk 3rd Sunday of the month at 10:30.

19th Jun The Roaches & Lud's church: meet at the entrance to Rockhall, ST13 8TY, 8 or 9 miles.  
17th Jul :meet at Miller's Dale station P&D car park GR138732. Exact route not decided yet  
21st Aug Whitwick: meet at the entrance to Mo's caravan site Beresford Lane Farm SK17 OHQ.  
6 or 8 miles then tea at the caravan. Camping can be arranged

[www.nottinghamhd.homestead.com](http://www.nottinghamhd.homestead.com) or [www.peakhd.webs.com](http://www.peakhd.webs.com) or ring Lesbian and Gay Switchboard 0115 9348485

To celebrate 20 years or thereabouts we have booked Strelley Hall (nr Junc 26 of M1) for a picnic party on Saturday 10th September from 2-8pm. We will have use of an indoor room, and the grounds. We will be organising some games to play e.g. rounders and croquet. Please bring picnic food to share.

There will be a small charge to cover the cost of the hall hire and providing tea and coffee (between £3-5 per person, depending on numbers), any surplus will be given to Breakthrough Breast Cancer charity.



### Derby Walking Women

Walks are normally on the 1st Sunday of the month, meet at 10:45 for 11:00 start, each walk is organised by volunteer(s) and full details are given out on the walk the month before or check out the website <http://www.derbywomenswalkinggroup.webs.com>

#### Sunday 5th June meet at Belper North Mill car park DE56 1YD

A lovely 5 mile walk undulating walk with picnic stop half way and café or pub to follow.

Details can also be obtained by contacting the overall co-ordinators on 07786 803455 or an email can be sent on to them via [lookoutmag@hotmail.com](mailto:lookoutmag@hotmail.com)

### North Nottinghamshire Walking Group

The group is not able to do regular walks at the moment but make contact direct to find out the latest.

Phone Julia 07961 847091 or email [nwalkers@yahoo.co.uk](mailto:nwalkers@yahoo.co.uk) for more details.

**SHEFFIELD HIKING DYKES** All Sunday walks start at 10:30 unless otherwise stated. Contact the group direct for details of locations and other walks. A full & varied programme of walks throughout the year, for further details check out their website <http://hikingdykes.webs.com/sheffield/> or phone Deena on 0114 268 6409 or Sandra on 01226 767179 or email [sheffield-hd@hotmail.com](mailto:sheffield-hd@hotmail.com)

12th June: Limestone Way Monyash, 9 miles Meet at Moor End car park  
26th June: Cresswell Crag & Welbeck Abbey, 7.5 miles meet at CC visitor centre  
10th July: 10 mile walk around Eyam, meet at the car park  
24th July: can anyone offer a walk for this date?

14th Aug: Beresford & Wolfscote Dale, 8 miles meet at the car park in Hartington village  
28th Aug: Moscar Heights, 7 miles park on the side of the road.  
For the full programme check out the website or contact Sheffield Hiking Dykes direct



Some groups also do evening walks in the summer: make enquiries direct

**Peak Rufty walks:** Future Peak Ruffies walk dates: May 28th; June 25th; July 30th

*These walks are for women who like walking longer and faster and over more challenging ground. Hikes are usually about 10 to 14 miles in the Peak District on the last Saturday of the month. When you join us for a walk, please ensure you have appropriate walking gear – boots, waterproofs and warm clothing – and carry sufficient food and drink for a full day in the hills.*

Information about forthcoming walks is posted to members of the peakruffies yahoo group. You can join this group by emailing: [peakruffies-subscribe@yahoo.co.uk](mailto:peakruffies-subscribe@yahoo.co.uk)

<http://peakhd.webs.com/walks.htm>

Here it is : one web site with ALL the walking group dates in calendar format



## HELP — updated from The Gay Guide

### Nottingham Rape Crisis Centre

If you have been sexually assaulted and need help, information, or someone to talk to phone 0115 941 0440. Confidential, free and independent. Run by women for women

### Women's Drug Service

Free and confidential service for women who use, have used or are at risk of using drugs. Tel: 01623 785 444

### Outburst!

Is an LGBT group for young people aged 11 to 25. Meet at Base 51 every Monday from 5:30 to 8pm.

Contact details  
07940 761160  
0115 915 2882

### Nottingham Police LGBT Consultation Group.

Meets every 3 months (usually at the Adams Building in the Lace Market). Representatives from local lesbian/bi groups are welcome. Details via Switchboard or the GAI Project.

**Broken Rainbow** Helpline 020 8539 9507 for lesbians experiencing abuse from their partner.

**FLAME** (Lesbians with ME group) Support & social group for lesbians with ME (Chronic Fatigue Syndrome) contact Self Help Team, Ormiston House, 32-36 Pelham St. 0115 911 1661 or Morag on 0115 847 1544 or email: [morag-@ntlworld.com](mailto:morag-@ntlworld.com) or [nottslesbiancentre@ntlworld.com](mailto:nottslesbiancentre@ntlworld.com)

### Relate Nottinghamshire

The Relate counselling service is available to all adult couples experiencing problems in their central relationship, including gay and lesbian couples. Tel: 0115 950 7836.

### Nottingham LGBT Consultation Forum

(formerly Notts LGBT Community Voice)  
(and before that the LGB Forum)

meets every 3 months, and can be contacted via Switchboard (0115 934 8485),

## Tipping the Velvet

Advice for women who have sex with women. Advice & help with sexual health, drug use, domestic violence, etc. Service is free & open to women of all ages. For more info contact Donna. The Health Shop, 12 Broad Street, Hockley, Nottingham NG1 3AL or 0115 947 5414 or [healthshop@nottinghamcity-pct.nhs.uk](mailto:healthshop@nottinghamcity-pct.nhs.uk)

## Nottingham & Nottinghamshire Lesbian & Gay Switchboard

Confidential info, advice & support from trained volunteers.  
C/o VAC, 7 Mansfield Road, Nottingham NG1 3FB  
0115 934 8485 or 01623 621 515 Mon - Fri 7.00 - 9:30 pm

## Domestic violence within Lesbian and Bisexual relationships

**Roshni Community Outreach service for ALL women** **0115 988 1414**

Monday to Thursday: 9-5 pm Friday: 9-4.30 pm

**Broken Rainbow helpline** **08452 60 44 60**

**Lesbian Parenting Group (see also Page 3)**

Singles or couples, with children looking for support, information exchange and socialising, then leave contact details with Switchboard so we can assess local interest.

Contact us by e-mailing [notts@lgsbswitchboard.fsnet.co.uk](mailto:notts@lgsbswitchboard.fsnet.co.uk) or phone 0115 9348485 (Monday to Friday 7-9pm)